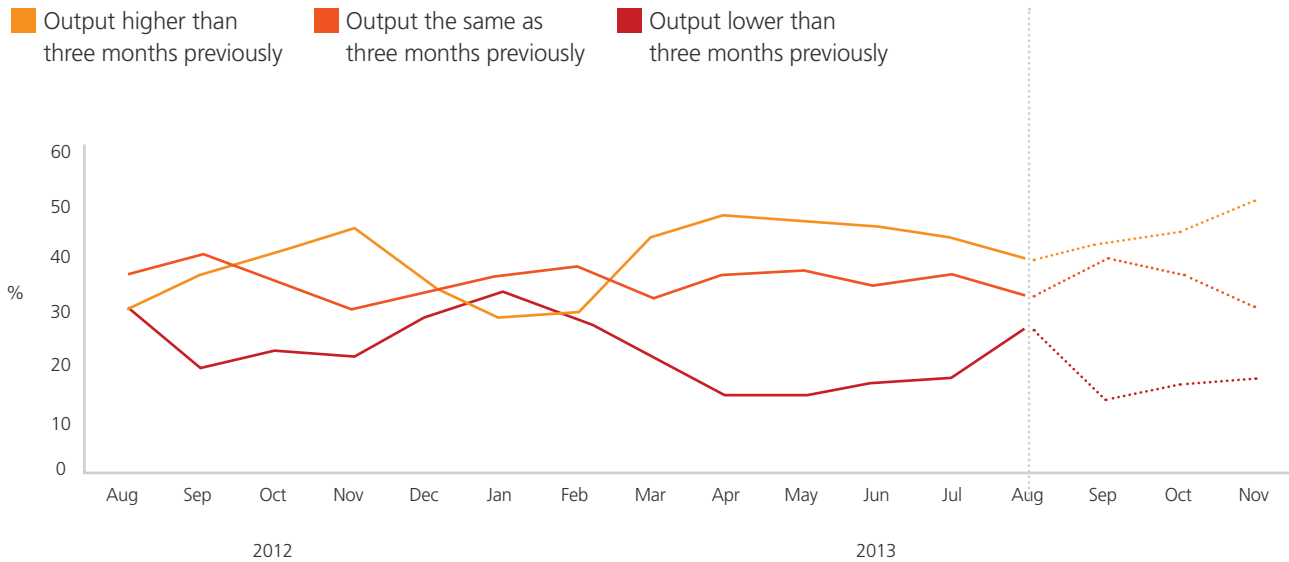


Levels of output/business activity compared to three months previously

Expected level of output/business activity in three months time



Employment



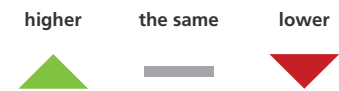
Number in employment compared to three months previously

20% **65%** **14%**

Number in employment in three months time

22% **64%** **13%**

Prices



Looking back three months

11% **75%** **6%**

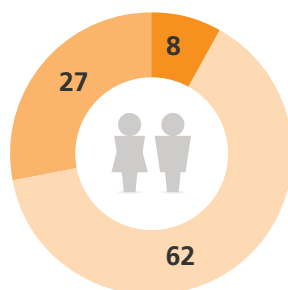
In three months time

13% **74%** **6%**

Workforce

%

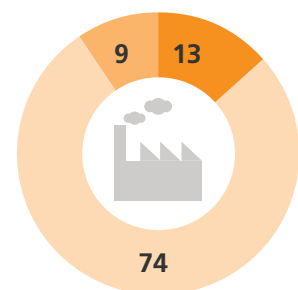
- Underutilised
- Satisfactory
- Overstretched



Capital

%

- Underutilised
- Satisfactory
- Overstretched



To view the latest results go to: www.bit.ly/ZTTCLo

Base: All businesses in England (c. 3,000 per month), Data are weighted to be representative of total employment in England