

EC Type Examination Certificate Number: **0120/ SGS0043**

## **Janz-Contadores de Energia,SA**

Av. Infante D. Henrique 328  
1800-223 Lisboa  
Portugal

Instrument Identification:

**C2801\*\*\*\***

**Single Phase, Credit, Active Import/ Export, Multi-rate, Indoor, Electricity Meter**

Instrument Traceable Number

**0120/ SGS0043**

has been assessed and certified as meeting the requirements of

## **EC Directive 2004/22/EC** **on Measuring Instruments Annex B**

It is certified that the manufacturer's technical design and specimen for the above instrument has been examined and, based on the evidence submitted, it is considered that the instrument conforms to the requirements of MI-003 of EC Directive 2004/22/EC.

This certificate is issued in conjunction with a certificate covering the product verification as required in Annex D or Annex F.

This certificate is valid for 10 years from 2<sup>nd</sup> June 2010 until 1<sup>st</sup> June 2020  
Issue 5

Certification is based on report number(s)  
EMA124571 & EMA141699

Authorised Signature  
Jan Saunders

Notified Body Number 0120



**SGS United Kingdom Limited, Notified Body 0120**

Unit 202B Worle Parkway, Weston-super-Mare, BS22 6WA UK  
t +44 (0)1934 522917 f +44 (0)1934 522137 [www.sgs.com](http://www.sgs.com)

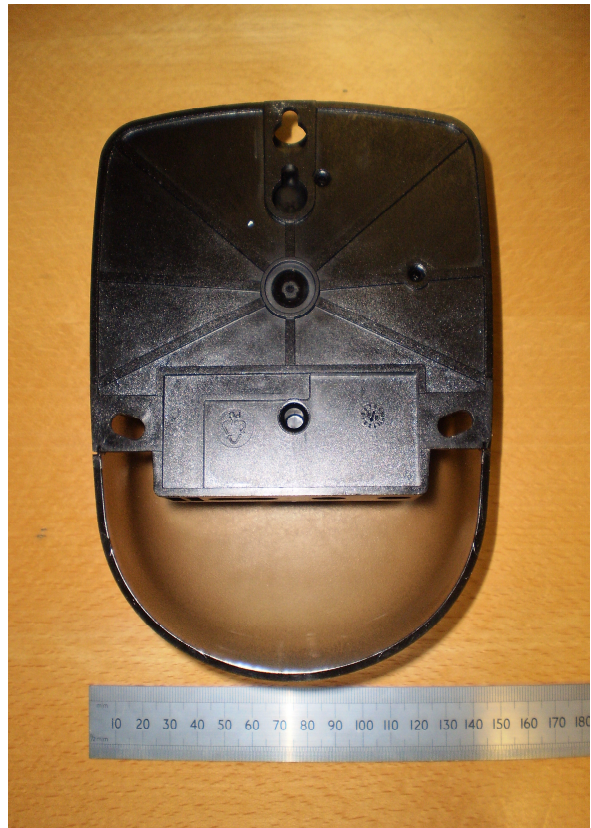
Contact Address  
SGS United Kingdom Ltd, Unit 10, South Industrial Estate, Bowburn, Durham, DH6 5AD UK  
t +44 (0)191 377 2000 f +44 (0)191 377 2020 [www.sgs.com](http://www.sgs.com)

EC Type Examination Cert.

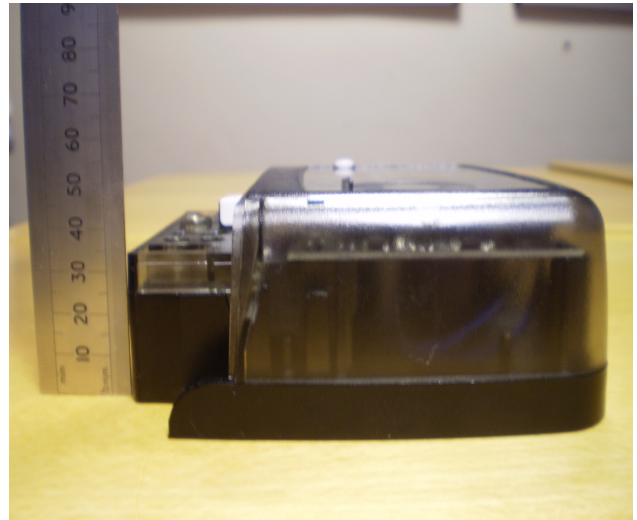
## Approval Annex for EC Type Examination Cert. No. 0120/SGS0043

<b>Manufacturer</b> : Janz-Contadores de Energia, SA.	
<b>Type of Meter(s)</b> : C2801*****	
<b>Description of Meter</b> : Single Phase, Credit, Active Import/ Export, Multi-rate, Indoor, Electricity Meter	
<b>Accuracy Class (es)</b> : A or B (kWh)	<b>Software Version No's</b> : 1.1.0, 1.5.6, 1.5.8 , 1.5.9, 1.5.11MG <b>Location</b> : LCD
<b>Firmware Version No's</b> : 1.0, 1.2, 1.3 and 1.4 <b>Location</b> : LCD	<b>Bill Of Materials No's</b> PCB BOM, reference no.: 9 1380 9501 f3e Mechanical BOM, reference no.: 9 1380 9501 f2b
<b>Meter Location</b> : Indoor	<b>Sealing Type</b> : 1 x Wire & Crimp or tamper proof sealing tape
<b>Integrity of Meter</b> : Inaccessible without breaking seals	<b>Temperature Range</b> : -40°C to +70°C
<b>Type of Circuit</b> : 1p2w	<b>Frequency</b> : 50Hz
<b>Current Range (A)</b> : 0,5-10(80)A	<b>Voltage Range (V)</b> : 230V

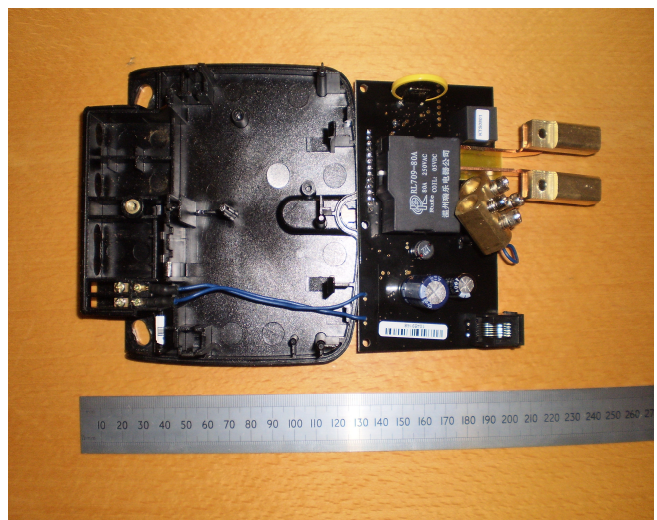
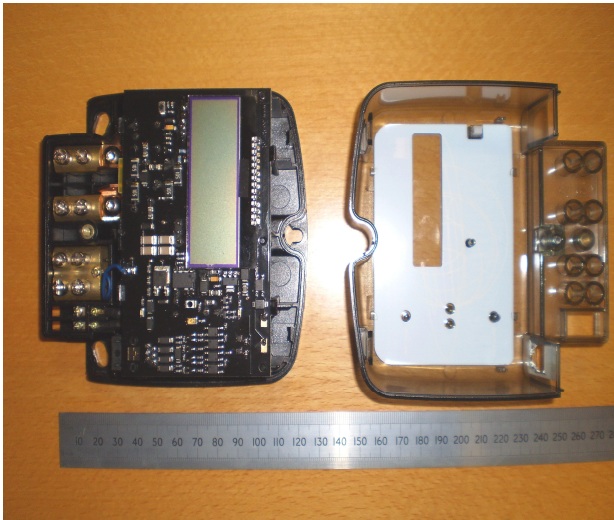
### External Views



### External Views



### Internal Views



Product Variant Identification Details:

Type Designation	Description of meter	
CONNECTION MODE	C	Single phase meter for direct connection (2 wires)
SERIES	2	The concept of series is related with the physical aspect of meter (meter case), seven series remain available
TARIFF	80	Programmable Multirate, kWh/kvarh import export (with max. demand registers and load profile)
INTERFACE TO THE USER	1	One push button to access data on LCD
PULSE OUTPUT	-	No pulse output
	E1	One pulse output (through terminals 21/22)
	E2	Two pulse outputs (through terminals 21/24 & 22/24)
	E3	Three pulse outputs (through terminals 21/24, 22/24 & 23/24)
PULSE INPUT	-	No pulse input for tariff switch
	I1	One pulse input for tariff switch
	I2	Two pulse inputs for tariff switch (excludes E2)
AUXILIARY COMMUNICATIONS	-	No auxiliary communications
	R2	With RS232 port / multidrop / HAN ports
AUXILIARY DEVICES	-	No auxiliary devices
	LR	Latching relay
ANTI-TAMPER	-	Without external cover opening detection device
	F	With external cover opening detection device

Modifications to the meter(s) described according to approval No.0120/ SGS0043 must be notified to the issuing body to confirm the meter(s) continuing compliance to the relevant pattern approval standard(s).