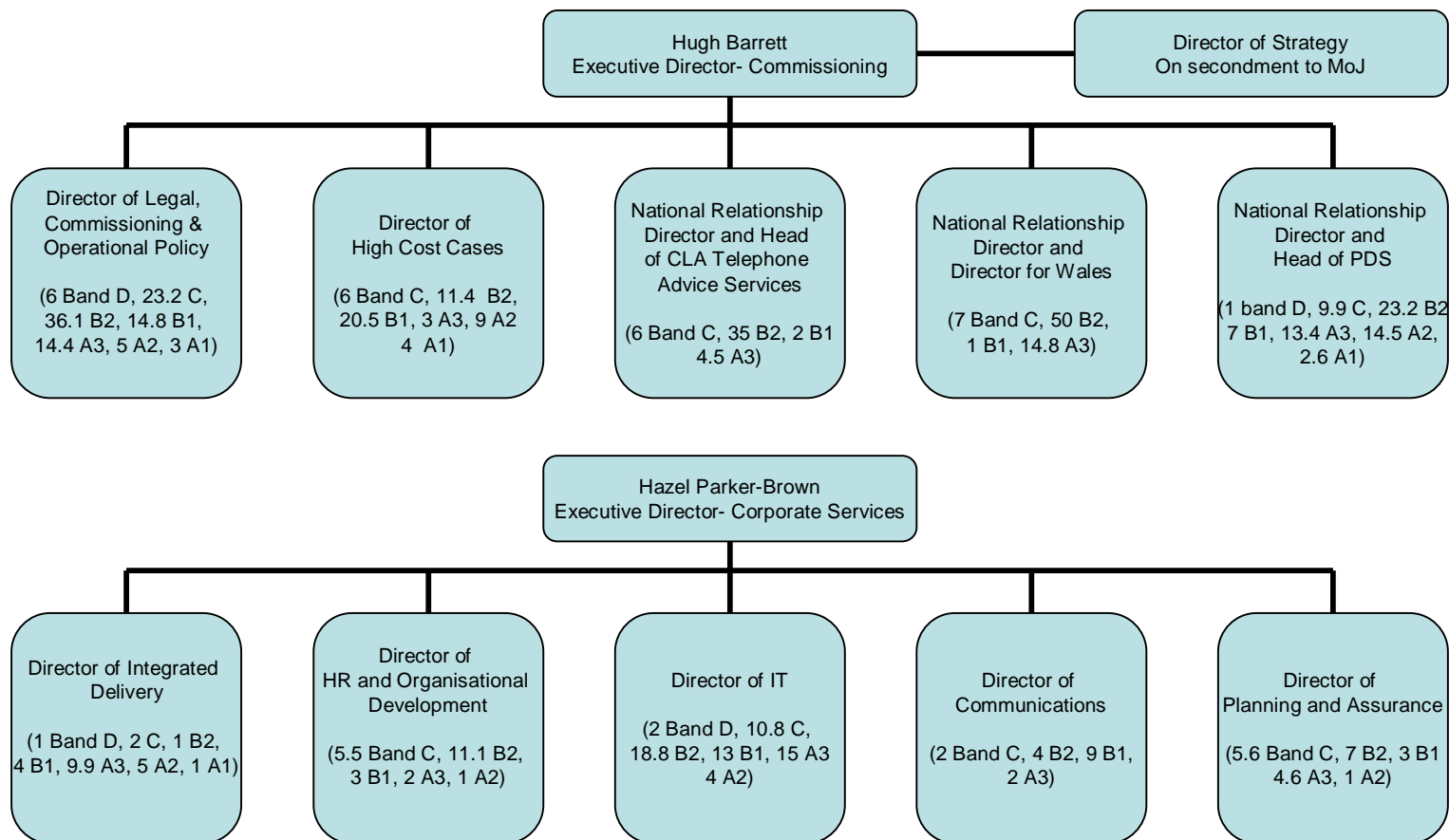


*FTE listed here do not report via an SCS 1 manager, those FTE are listed on the following organograms

Key to Grades	Band D	Band C	Band B2	Band B1	Band A3	Band A2	Band A1	Level 7
Pay Range	£60,890 - £78,240	£41,837 - £61,615	£34,346 - £50,553	£26,645 - £37,614	£24,146 - £34,458	£17,837 - £28,169	£11,467 - £23,475	£11,467 - £17,274

This represents the organisation as at 30 June 2010

This is based on employees on the LSC payroll database.



Key to Grades	Band D	Band C	Band B2	Band B1	Band A3	Band A2	Band A1	Level 7
Pay Range	£60,890 - £78,240	£41,837 - £61,615	£34,346 - £50,553	£26,645 - £37,614	£24,146 - £34,458	£17,837 - £28,169	£11,467 - £23,475	£11,467 - £17,274

This represents the organisation as at 30 June 2010

This is based on employees on the LSC payroll database