



First Release

20th February 2013
IGS200213SSFEB13

Coverage: Great Britain (unless otherwise stated)

Theme: People and Places



**Department
for Work &
Pensions**

Issued by:

Information, Governance and
Security Directorate
Department for Work and
Pensions

Telephone:

Press Office: 0203 267 5144

Website:

www.dwp.gov.uk

Statistician:

Stuart Grant
Information, Governance and
Security Directorate
Department for Work and
Pensions
Room BP5201
Benton Park Road
Longbenton
Newcastle upon Tyne
NE98 1YX

Telephone: 0191 216 6263

Email:

stuart.grant@dwp.gsi.gov.uk

Next publication:

20th March 2013

DWP QUARTERLY STATISTICAL SUMMARY

In August 2012, DWP announced that the frequency of the publication of the Statistical Summary would temporarily change to allow DWP to focus on preparation of a new, improved dissemination tool and the development of new series for the Personal Independence Payment and Universal Credit. Following the delayed release of August 2012 statistics on 20th March 2013, the frequencies for all publications, excluding Housing Benefit/Council Tax Benefit, will revert to the original schedule. For more information please see [Notes section 9](#).



This Statistical Summary aims to give users a structured overview of the benefit National and Official Statistics published by the Department for Work and Pensions (DWP). Statistics are grouped by component area of DWP and, for each statistic, links are given for users to access more detailed information.

Key benefit statistics from 100% sources are available on an internet-based tabulation tool. A similar tabulation tool derived from 5% sample data is also available, however wherever possible 100% data should be used in preference to 5% estimates, as they are more accurate and form DWP's headline statistics. Statistics are also released via the NOMIS website and the Neighbourhood Statistics website.

All regular series are full National Statistics;

EXCEPT:

The working age inactive benefit early estimates are official statistics;
[See: <http://www.statisticsauthority.gov.uk/national-statistician/types-of-official-statistics>]

The early estimates for working age inactive benefit client groups are released monthly and are designed to give indicative, timely information; they are not a substitute for the National Statistics. They will be replaced by the quarterly National Statistics covering the same period when they are published. The National Statistics are the finalised figures.

These statistics were released on 20 February 2013 according to the arrangements approved by the UK Statistics Authority. Not all DWP National Statistics are covered by this release. Some statistics have their own first releases, but links to these are given throughout.

This summary also contains a 'Focus on...' article regarding an open statistical consultation regarding "People and households claiming Universal Credit, Personal Independence Payment and other benefits."

Key Findings

- There were 5.8 million working age benefit claimants at May 2012. This is an increase of 44 thousand in the year to May 2012.
- Employment and Support Allowance (ESA) was introduced on 27th October 2008. There were around 1.13 million people claiming Employment and Support Allowance at the end of May 2012.



- The number of working age claimants of ESA and incapacity benefits totals 2.53 million in May 2012. This figure is 42 thousand less than May 2011.
- The number of lone parents claiming Income Support (IS) decreased by 18 thousand to 577 thousand in the year to May 2012.
- At November 2012, the total number of people claiming Housing Benefit was 5.05 million, with 5.90 million claiming Council Tax Benefit.
- At May 2012, there were 12.8 million claimants of State Pension (SP), a rise of 151 thousand on a year earlier. Of these 40% were male and 60% female.
- At May 2012, there were 2.54 million claimants of Pension Credit (3.10 million including partners) a fall of 74 thousand on the previous quarter.
- At the end of September 2012, the total Child Support Agency (CSA) live and assessed caseload stood at 1.11 million cases, of which 75% were current scheme cases.
- At May 2012, there were 3.26 million recipients of Disability Living Allowance (DLA), 1.57 million recipients of Attendance Allowance and 604 thousand recipients of Carer's Allowance (CA)

Statistics on benefit flows show:

- There were 993 thousand new claims to Employment and Support Allowance (ESA) and incapacity benefits, this includes people moving to ESA through Incapacity Benefit re-assessment; 28 thousand new claims to Bereavement Benefit/Widows Benefit (BB/WB); 307 thousand to Income Support (IS); and 630 thousand new claims to State Pension (SP) in the year to May 2012.
- There were 1.08 million benefit exits for Employment and Support Allowance and incapacity benefits, this includes people leaving IB through Incapacity Benefit re-assessment; 34 thousand for Bereavement Benefit/Widows Benefit (BB/WB); 595 thousand for Income Support (IS); and 503 thousand benefit exits for State Pension (SP) in the year to May 2012.
- There were 168 thousand new claims to PC in the financial year 2011/2012.

[OFFICIAL STATISTICS]: Early estimates show:

- At the end of December 2012, the working age Income Support lone parents (ISLP) early estimate was 510 thousand.
- The Employment and Support Allowance/ incapacity benefits (ESA/IB) early estimate for December is 2.490 million. Of these, approximately 92.7% were in receipt of benefit payments from IB, SDA, ESA or Income Support/ Pension Credit. The remaining 7.3% percent received National Insurance credits only.

If you have any comments or requests regarding this publication, please contact DWP via stats-consultation@dwp.gsi.gov.uk, or join the "Welfare and Benefit Statistics" community at www.statsusernet.org.uk.



Contents	Page
Focus on..... People and households claiming Universal Credit, Personal Independence Payment and other benefits: Plans for 2013-2017	4
1. Working Age	
1.1 Working age Client Group	5
Individual Benefits	
1.2 Jobseeker's Allowance	8
1.3 Employment and Support Allowance and incapacity benefits	9
1.4 Income Support	12
1.5 Housing Benefit / Council Tax Benefit	13
1.6 Widow's Benefit & Bereavement Benefits	16
1.7 Jobseeker's Allowance sanctions and disallowances	17
2. Early Estimates for Working Age Inactive Benefit Client Group	
2.1 Employment and Support Allowance / incapacity benefits (ESA/IB) client group	18
2.2 Income Support Lone Parent (ISLP) client group	20
3. Pensioners	
3.1 Pensioner Client Group	21
Individual Benefits	
3.2 State Pension	22
3.3 Pension Credit	23
4. Disabled and Carers	
4.1 Disability Living Allowance	24
4.2 Attendance Allowance	24
4.3 Carer's Allowance	25
4.4 Industrial Injuries Disablement Benefit	26
5. Families & Children	
5.1 Child Support Agency cases	27
Notes	29

Focus on....

People and households claiming Universal Credit, Personal Independence Payment and other benefits: Plans for 2013-2017

In November 2010 the government announced plans to reform the welfare system by creating a new Universal Credit (<http://www.dwp.gov.uk/policy/welfare-reform/universal-credit/>). The new benefit will replace many of the current separate welfare benefits as well as subsuming in-work support currently administered through tax credits. Details can be found at the link above.

Other changes to the benefit system are taking place at around the same time, for example, the introduction of Personal Independence Payment and the Benefit Cap from 2013.

On 23 January 2013, DWP opened a consultation on "People and households claiming Universal Credit, Personal Independence Payment and other benefits: Plans for 2013-2017". The outcome of this consultation will shape the content and format of the Statistical Summary through to 2017 and beyond.

The full consultation can be found at: http://research.dwp.gov.uk/asd/dwp_stats2013_17.pdf

The consultation document contains a series of proposals on which user views are requested. Once user views have been received and understood, DWP can produce and publish an indicative timetable for each change. The main proposed changes are:

- DWP will gradually transfer statistics publication to a new dissemination tool called Stat-Xplore.
- Statistics on Universal Credit and Personal Independence Payment will be published, along with those on the other benefits available from DWP.
- The data source for Universal Credit will eventually allow a wide range of breakdowns to be published. These will be introduced gradually.
- The data source for Personal Independence Payment will also eventually allow a wide range of breakdowns to be published. These will be introduced gradually.
- Ahead of the migration of Housing Benefit to Universal Credit, new statistics will be published on individuals and households subject to the Benefit Cap.
- During the transition to Universal Credit, DWP will produce and publish statistics on the whole group of working age benefit, Housing Benefit, tax credit and Universal Credit claimants. Individual claimants will be classified in to statistical groups by the types of benefit/ credit received. Analysis will be available at assessment unit level as well as individual level across the full range of DWP benefits, Universal Credit, Housing Benefit and Tax Credits
- These statistics will be drawn from a new unified customer database.
- Similar changes will be applied to the group of claimants over State Pension age.
- Alongside statistics on the number of individuals claiming benefits and credits, DWP propose to begin publication of more detailed flows; including flows on/ off benefit and flows between statistical groups.
- Statistics on benefits/ credits will be integrated with statistics on, for example, sanctions, employment programmes, hardship, independent assessments for Personal Independence Payment and Work Capability Assessments for Employment and Support Allowance.
- DWP will produce monthly releases of statistics, with commentary routinely updated on a quarterly basis. Monthly edits to commentary will be made only when necessary to ensure user understanding of a new release.
- Due to improvements in the speed of data delivery, DWP will cease the early estimates series and bring forward the publication dates to be three and a half months after the reference date.
- DWP will investigate the possibility of making more DWP data available for further analysis.
- Statistical series not mentioned in this consultation will continue as they are currently published.

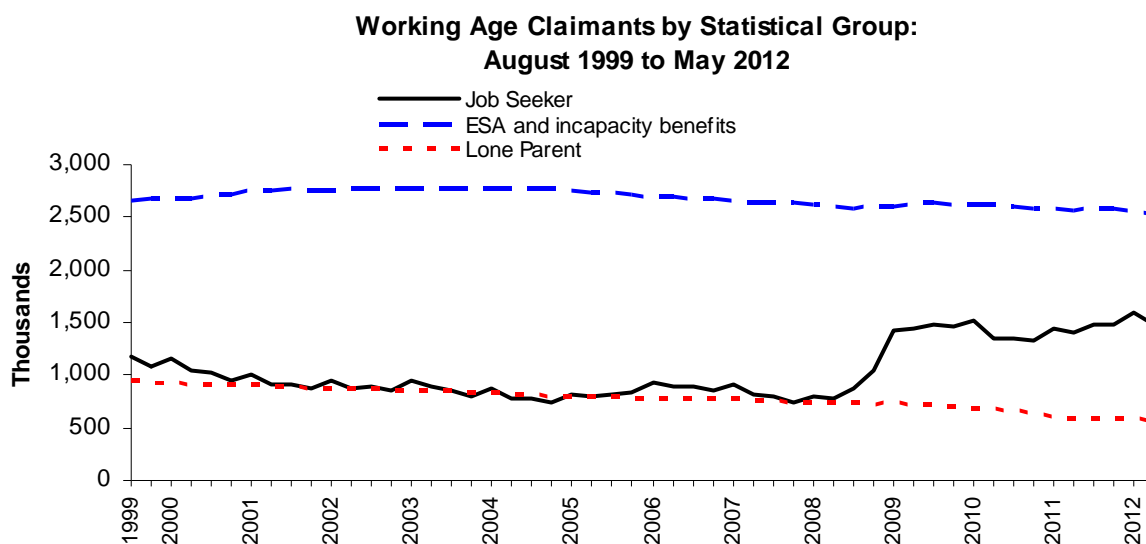
In short, these proposals overhaul and combine many of our existing series, aiming to bring benefits, tax credits, Housing Benefit, sanctions, hardship, employment programmes all together in to one unified customer database. This will then be used to produce a wide range of caseload, flow and transition statistics.

Comments on these proposals should be made by **24 April 2013**. See the consultation itself for details.

1. Working Age

1.1 National Statistics: Working Age client group

Combines data collected for Jobseeker's Allowance, Incapacity Benefit, Employment and Support Allowance, Severe Disablement Allowance, Disability Living Allowance, Carer's Allowance, Widow's Benefit, Bereavement Allowance and Income Support for working age claimants (including Pension Credit for males under State Pension age).



The age at which women reach State Pension age is gradually increasing from 60 to 65 between April 2010 and April 2016 to November 2018. Under current legislation, State Pension age for men and women is planned to increase to: 66 between November 2018 and October 2020; 67 between 2034 and 2036; 68 between 2044 and 2046. The changes will introduce a small increase to the number of working age benefit recipients and a small reduction to the number of pension age recipients. There are also changes to the way users can analyse benefit recipients as a proportion of the working population. More information can be found at: <http://statistics.dwp.gov.uk/asd/espa.pdf>.

Between August 1999 and February 2008, the number of jobseekers in GB fell from 1.18 million to 807 thousand. However, rose to almost 1.53 million at February 2010. Since then, numbers have remained broadly steady and were 1.49 million in May 2012. The preferred source of JSA figures is the ONS claimant count measure (which is seasonally adjusted). This can be found at: <http://www.ons.gov.uk/ons/rel/lms/labour-market-statistics/index.html>

The lone parent caseload fell from 930 thousand to 577 thousand between November 1999 and May 2012.

The number of working age claimants of Employment and Support Allowance (ESA) and incapacity benefits totals 2.53 million in May 2012. This shows a year-on-year decrease of 42 thousand.

Table 1.1 Working Age claimants by Statistical Group: November 1999 – May 2012

	Total	Job Seeker ²	Employment and Support Allowance and incapacity benefits ³	Lone Parent ⁴	Carer ⁵	Other Income Related ⁶	Disabled ⁷	<i>Thousands</i> Bereaved ⁸
Nov -99	..	1,083.03	2,674.71	930.24	316.50	218.37
Feb -00	..	1,154.97	2,676.39	923.47	313.58	216.97
May -00	..	1,037.01	2,686.30	919.43	310.88	210.80
Aug -00	..	1,015.83	2,714.85	920.10	309.67	197.95
Nov -00	..	948.66	2,722.57	905.76	311.56	196.69
Feb -01	..	1,001.08	2,750.45	908.21	313.96	182.81
May -01	..	909.15	2,753.66	900.43	319.59	180.15
Aug -01	..	907.68	2,763.62	900.22	323.83	175.41
Nov -01	..	880.36	2,746.02	878.59	328.62	179.08
Feb -02	..	955.45	2,745.58	877.11	332.02	176.62
May -02	5,455.75	877.38	2,765.73	870.95	335.79	165.60	245.27	195.02
Aug -02	5,481.48	890.54	2,769.36	875.04	339.91	167.19	249.72	189.71
Nov -02	5,428.63	850.05	2,776.56	856.23	343.72	161.36	256.58	184.13
Feb -03	5,514.28	946.16	2,776.54	848.85	346.17	156.33	260.92	179.31
May -03	5,459.68	885.78	2,773.61	855.81	347.94	155.96	266.25	174.33
Aug -03	5,425.85	851.37	2,777.06	851.73	350.41	155.26	270.15	169.88
Nov -03	5,363.74	803.88	2,780.49	831.75	353.25	154.20	275.51	164.67
Feb -04	5,426.42	867.42	2,777.53	830.25	355.81	155.20	280.12	160.09
May -04	5,327.35	777.40	2,772.85	823.27	359.25	155.42	283.33	155.83
Aug -04	5,321.26	769.25	2,774.93	818.10	360.08	158.20	289.12	151.59
Nov -04	5,270.77	741.06	2,772.18	796.53	361.42	157.94	294.15	147.49
Feb -05	5,327.77	819.68	2,757.65	793.13	362.04	153.93	297.23	144.11
May -05	5,289.13	800.66	2,741.62	789.32	363.76	151.09	300.96	141.73
Aug -05	5,302.72	825.11	2,725.47	789.35	365.08	153.71	305.84	138.17
Nov -05	5,287.66	836.71	2,710.50	778.56	363.34	155.74	309.31	133.51
Feb -06	5,384.74	935.20	2,705.47	777.09	368.66	153.06	313.85	131.40
May -06	5,325.77	895.88	2,688.02	774.86	368.50	152.70	317.04	128.78
Aug -06	5,335.22	900.92	2,683.00	783.18	369.81	153.12	319.13	126.06
Nov -06	5,288.34	860.22	2,672.96	775.62	371.71	161.10	326.64	120.09
Feb -07	5,321.68	904.04	2,662.13	771.35	373.83	163.32	329.75	117.26
May -07	5,207.27	807.27	2,643.21	765.62	374.84	167.05	335.13	114.15
Aug -07	5,187.14	788.45	2,641.11	763.55	376.03	167.84	340.61	109.55
Nov -07	5,124.68	741.10	2,641.70	741.83	379.35	167.29	346.16	107.25
Feb -08	5,174.88	806.70	2,617.88	741.71	384.49	169.95	349.38	104.78
May -08	5,142.63	787.87	2,595.83	738.64	387.56	173.33	356.50	102.90
Aug -08	5,232.88	868.73	2,590.61	744.68	392.73	176.23	360.08	99.81
Nov -08	5,404.12	1,036.48	2,605.51	728.98	396.80	178.84	360.47	97.04
Feb -09	5,802.48	1,421.60	2,603.54	736.04	400.12	181.88	363.82	95.49
May-09	5,836.50	1,443.00	2,621.43	720.48	405.56	183.22	368.94	93.87
Aug-09	5,895.65	1,485.32	2,632.74	715.73	412.97	184.46	373.10	91.33
Nov-09	5,857.13	1,469.92	2,618.38	695.72	418.53	188.23	377.95	88.40
Feb-10	5,917.56	1,526.01	2,614.76	692.02	422.08	191.35	383.28	88.06
May-10	5,747.83	1,354.62	2,613.10	679.15	430.23	192.19	390.81	87.74
Aug-10	5,744.64	1,349.71	2,606.61	672.35	439.43	191.38	396.81	88.36
Nov-10	5,685.60	1,328.91	2,586.42	648.30	445.44	192.03	399.38	85.11
Feb-11	5,765.34	1,438.67	2,578.66	613.78	450.42	191.76	406.31	85.75
May-11	5,709.55	1,404.14	2,570.22	595.40	456.06	187.18	411.01	85.55
Aug-11	5,802.82	1,482.86	2,582.18	595.29	465.99	180.08	413.11	83.30
Nov-11	5,778.16	1,478.43	2,575.60	581.62	470.96	174.91	413.84	82.79
Feb-12	5,881.70	1,589.64	2,557.68	584.17	477.15	169.11	420.70	83.25
May-12	5,753.88	1,484.07	2,528.14	577.08	486.94	164.96	429.51	83.17



Notes relating to Table 1.1

1. Claimants have been assigned to a statistical group according to a hierarchy. The order is shown in the table, i.e. 'Job Seekers' followed by 'Employment and Support Allowance and incapacity benefits'.
2. 'Job Seekers' are recipients of Jobseeker's Allowance.
3. 'From November 2008 the "incapacity benefits group" includes Employment and Support Allowance (ESA). ESA replaced Incapacity Benefit and Income Support paid on the grounds of incapacity for new claims from 27th October 2008. Prior to this the "incapacity benefits group" referred to claimants of Incapacity Benefit (including credits only) or Severe Disablement Allowance including people claiming IS on the grounds of Incapacity.
4. 'Lone Parents' are single recipients of Income Support with a child under 16.
5. 'Carers' are recipients of Carers Allowance.
6. 'Others on Income Related Benefit' are other recipients of Income Support (including Income Support Disability Premium) or Pension Credit.
7. 'Disabled' are recipients of Disability Living Allowance. Industrial Injuries benefits data is not available.
8. 'Bereaved' are recipients of Widow's Benefit or Bereavement Benefit.
9. Totals are not shown prior to May 2002 as complete data is not available for 'Disabled' and 'Bereaved' statistical groups.
10. HB/CTB data are not included in the client group hierarchy but are published separately (see section 1.5).

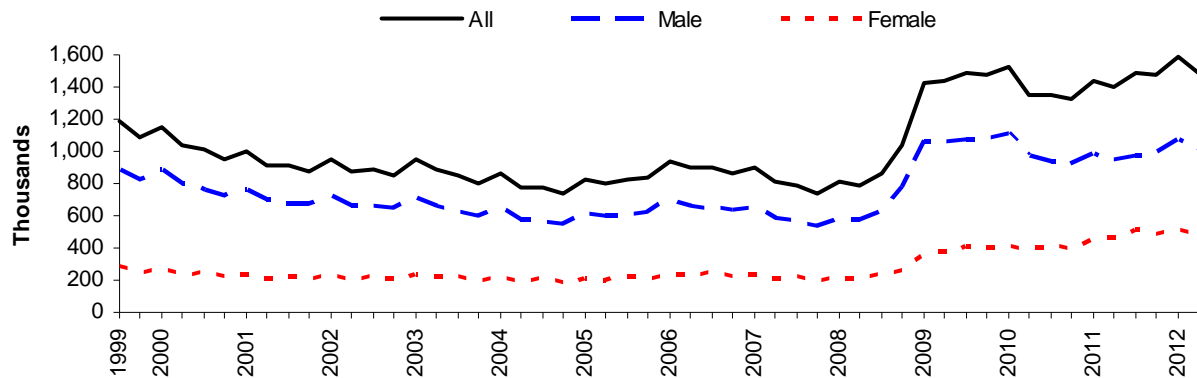
Latest statistical data available from: <http://83.244.183.180/100pc/tabtool.html>



1.2 National Statistics: Jobseeker's Allowance

Jobseeker's Allowance (JSA) was introduced on 7th October 1996 and has both contributory and income-related elements. It is paid to people under state pension age who are available for and actively seeking work.

Jobseekers Allowance by Gender: August 1999 to May 2012



The preferred source of JSA figures is the ONS claimant count measure (which is seasonally adjusted).

DWP produce a separate set of Jobseeker's Allowance figures to enable cross-benefit analysis and supply a wider range of breakdowns, and these are provided in this release.

The DWP figures at May 2012 show the total number of Jobseeker's Allowance claimants was 1.48 million. Female claimants represented 33% of the JSA caseload (488 thousand), while males represented 67% (996 thousand). The total caseload has increased by 80 thousand since May 2011, with men increasing by 50 thousand and women increasing by 30 thousand.

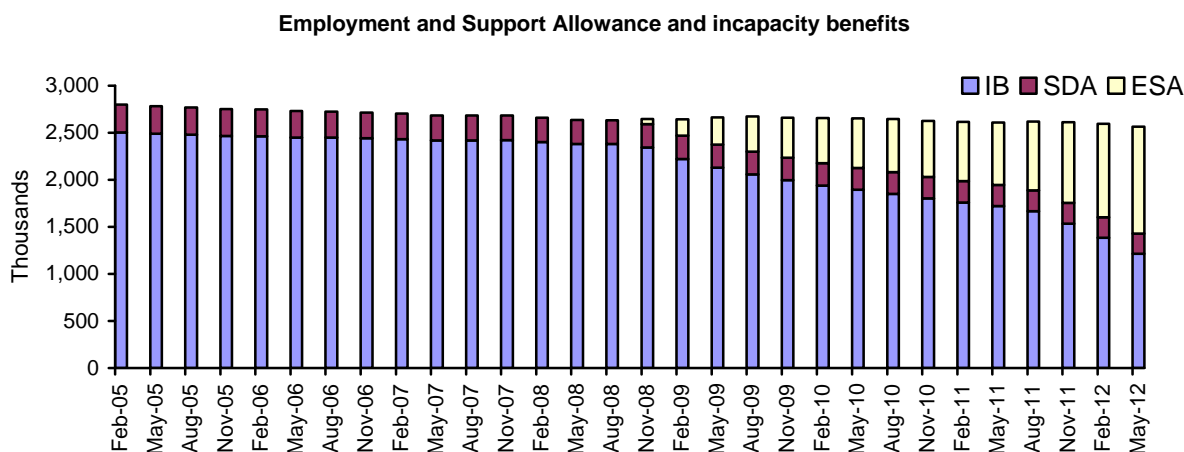
Latest statistical data available from: <http://83.244.183.180/100pc/tabtool.html>

1.3 National Statistics: Employment and Support Allowance and incapacity benefits

From 27th October 2008, Employment & Support Allowance (ESA) replaced Incapacity Benefit (IB) and Income Support (IS) paid on the grounds of incapacity for new claims. Incapacity benefits consist of Incapacity Benefit (introduced on 13th April 1995 and paid to people who are incapable of work and who have paid sufficient contributions throughout their working life) and Severe Disablement Allowance (SDA). This section includes a small number of claimants over State Pension age; therefore figures may differ to those in Table 1.1 which refers to working age claimants only.

Starting in October 2010 (in trial areas), most claimants who receive IB, SDA and IS paid on the grounds of illness or disability will be assessed to see if they qualify for ESA. If they qualify for ESA their IB, SDA or IS claim is converted into an ESA claim. For claimants who were previously in receipt of IB or SDA, their benefit will be converted to contributory ESA; if they were previously in receipt of IS their benefit will be converted to income-related ESA. In the same way as with IB, contributory ESA can be paid with an income-related top up and a transitional addition if appropriate.

The government has limited the period for which contribution-based Employment and Support Allowance (ESA) can be paid in some circumstances. These changes came into effect on 1 May 2012. Claimants who have already received 365 days of contribution-based ESA saw their entitlement end on 30 April 2012.



At May 2012, there were 2.56 million claimants of Employment and Support Allowance and incapacity benefits (Incapacity Benefit or Severe Disablement Allowance), a decrease of 44 thousand on a year earlier. 55% of claimants were men and 45% women. The male caseload has decreased by 50 thousand and the female caseload has increased by 6 thousand in the year to May 2012.

There were 285 thousand new Employment and Support Allowance and incapacity benefits claimants in the May 2012 quarter, which represents 11% of the May 2012 caseload. Over the same period, 312 thousand claimants left the benefits, 12% of the caseload at May 2012. These numbers includes IB claimants who have been re-assessed for ESA. More information on this process and the numbers involved can be found at: http://research.dwp.gov.uk/asd/workingage/index.php?page=esa_ibr

In the year to May 2012, there were a total of 993 thousand new claims for Employment and Support Allowance and incapacity benefits and 1.08 million claims were closed.

Table 1.2a shows the payment status of all working age Employment and Support Allowance and incapacity benefits claimants. In May 2012 approximately 92.7% were in receipt of benefit payments from Incapacity Benefit, Severe Disablement Allowance, Employment and Support Allowance, Income Support, Pension Credit. The remaining 7.3% percent received National Insurance credits only (i.e. no payment of IB, SDA, ESA, IS or PC). This compares to 5.8% receiving no benefit payments one quarter earlier in February 2012. This change is because the government has limited the period for which contribution-based Employment and Support Allowance (ESA) can be paid in some circumstances. These changes came into effect on 1 May 2012. Claimants who had already received 365 days of contribution-based ESA saw their entitlement end on 30 April 2012.

Table 1.2 Employment and Support Allowance and incapacity benefits claimants¹: August 2000 – May 2012

	Total	Employment and Support Allowance	Incapacity Benefits	<i>Thousands</i> Severe Disablement Allowance
Aug -00	2,756.51	.	2,380.31	376.20
Nov -00	2,764.14	.	2,387.86	376.28
Feb -01	2,792.03	.	2,415.02	377.00
May -01	2,795.34	.	2,420.88	374.45
Aug -01	2,805.45	.	2,435.42	370.03
Nov -01	2,787.71	.	2,425.57	362.14
Feb -02	2,787.22	.	2,427.22	360.00
May -02	2,807.63	.	2,471.14	336.48
Aug -02	2,811.43	.	2,478.84	332.58
Nov -02	2,818.48	.	2,489.91	328.56
Feb -03	2,818.57	.	2,493.87	324.70
May -03	2,815.66	.	2,494.89	320.76
Aug -03	2,819.05	.	2,502.06	316.99
Nov -03	2,822.27	.	2,509.01	313.26
Feb -04	2,819.16	.	2,509.67	309.49
May -04	2,814.71	.	2,508.77	305.94
Aug -04	2,817.01	.	2,514.27	302.73
Nov -04	2,814.41	.	2,514.73	299.67
Feb -05	2,799.87	.	2,503.53	296.34
May -05	2,783.72	.	2,490.85	292.87
Aug -05	2,767.74	.	2,478.16	289.59
Nov -05	2,752.90	.	2,466.20	286.70
Feb -06	2,747.49	.	2,464.24	283.25
May -06	2,730.00	.	2,449.99	280.01
Aug -06	2,724.98	.	2,447.96	277.02
Nov -06	2,714.95	.	2,441.03	273.91
Feb -07	2,704.10	.	2,433.40	270.70
May -07	2,685.32	.	2,417.71	267.61
Aug -07	2,683.16	.	2,418.65	264.51
Nov -07	2,683.75	.	2,422.01	261.74
Feb -08	2,659.65	.	2,401.06	258.59
May -08	2,637.56	.	2,382.00	255.56
Aug -08	2,632.00	.	2,379.46	252.53
Nov -08	2,646.78	53.77	2,343.25	249.76
Feb -09	2,644.43	175.81	2,221.89	246.73
May -09	2,662.49	288.27	2,130.13	244.09
Aug -09	2,674.02	374.44	2,058.02	241.56
Nov -09	2,659.65	425.77	1,994.95	238.93
Feb -10	2,655.96	479.43	1,940.30	236.23
May -10	2,653.81	527.12	1,892.98	233.71
Aug -10	2,646.54	563.98	1,851.01	231.55
Nov -10	2,625.86	593.93	1,802.93	229.00
Feb -11	2,617.27	631.35	1,759.62	226.30
May -11	2,608.43	662.23	1,722.39	223.81
Aug -11	2,619.67	731.95	1,666.21	221.52
Nov -11	2,612.52	857.89	1,535.38	219.25
Feb -12	2,593.86	991.19	1,385.64	217.03
May -12	2,563.96	1134.29	1,215.30	214.38

Notes:

1. Claimants include those beneficiaries plus, those receiving National Insurance Credits and no monetary payment (many credits-only claimants of Incapacity Benefit or Severe Disablement Allowance will also receive Income Support).

2. This table replaces table 1.2 in the November 2010 Statistical Summary. This table no longer includes beneficiaries but still includes all claimants of Incapacity Benefit, Severe Disablement Allowance or Employment and Support Allowance. This provides a consistent time series. Numbers of Working Age claimants of 'ESA and incapacity benefits' are shown in the Working Age Client Group section of this release. Those figures differ from this table due to the inclusion of a small number of claimants over state pension age in table 1.2 and minor methodological differences.

Table 1.2a: Employment and Support Allowance and Incapacity benefits claimants aged under State Pension age: 2000 - 2012

	Claiming ESA, IB or SDA				Claiming ESA				Claiming IB				Thousands Claiming SDA	
	Receiving contributory based benefit (2) or SDA only with income based benefit (2)	Receiving income based (2) benefit (2)	National Insurance credits only (2)	Receiving contributory based benefit only (3)	Receiving contributory income based benefit (3)	Receiving income based (3) benefit (3)	National Insurance credits only (3)	Receiving contributory based benefit only (3)	Receiving income based (3) benefit (3)	National Insurance credits only (3)	Receiving SDA only	Receiving SDA and IS/PC		
Total														
May-00	2,686.31	1,365.48	534.29	677.69	108.85	1,267.49	297.24	677.69	108.85	97.99	237.05	
May-01	2,753.66	1,351.79	561.70	725.55	114.62	1,257.57	322.32	725.55	114.62	94.21	239.38	
May-02	2,765.73	1,333.96	550.15	759.42	122.19	1,253.33	335.48	759.42	122.19	80.63	214.67	
May-03	2,773.61	1,306.80	548.32	790.78	127.71	1,233.83	341.96	790.78	127.71	72.97	206.36	
May-04	2,772.85	1,301.01	517.19	815.58	139.08	1,233.71	319.95	815.58	139.08	67.30	197.25	
May-05	2,741.65	1,275.63	492.38	832.12	141.52	1,212.88	304.00	832.12	141.52	62.76	188.38	
May-06	2,688.13	1,237.69	471.42	839.10	139.92	1,179.62	291.17	839.10	139.92	58.08	180.25	
May-07	2,643.29	1,193.65	457.06	855.29	137.29	1,141.34	283.61	855.29	137.29	52.32	173.44	
May-08	2,595.83	1,151.25	442.02	866.41	136.15	1,103.33	275.94	866.41	136.15	47.92	166.07	
May-09	2,621.43	1,133.55	431.20	918.94	137.74	113.04	125.06	976.39	259.36	793.88	100.42	44.13	159.32	
Aug-09	2,632.74	1,121.56	429.81	933.33	148.04	138.64	162.96	939.68	253.95	770.37	93.97	43.24	157.73	
Nov-09	2,618.38	1,105.35	427.59	937.54	147.89	156.35	188.10	906.60	248.85	749.44	90.02	42.39	156.08	
Feb-10	2,614.76	1,095.48	426.45	943.94	148.88	175.46	212.61	878.49	244.34	731.33	86.09	41.53	154.42	
May-10	2,613.10	1,083.39	426.22	953.79	149.70	188.81	239.11	853.74	240.09	714.68	84.44	40.83	152.98	
Aug-10	2,606.61	1,071.09	425.44	962.21	147.85	198.65	262.15	832.21	236.44	700.06	82.29	40.24	151.99	
Nov-10	2,586.42	1,049.71	420.94	965.23	150.55	200.77	282.73	809.25	230.75	682.49	80.43	39.69	150.55	
Feb-11	2,578.66	1,032.83	417.34	983.44	145.06	205.80	316.34	787.87	225.90	667.10	78.75	39.16	149.13	
May-11	2,570.22	1,019.79	413.35	993.75	143.33	212.07	339.13	768.87	220.50	654.62	78.39	38.86	147.49	
Aug-11	2,582.18	1,014.90	410.71	1,013.81	142.76	233.53	381.76	742.66	213.24	632.06	78.24	38.70	146.02	
Nov-11	2,575.60	1,004.37	406.63	1,023.96	140.64	278.83	453.07	686.77	198.02	570.89	79.70	38.78	144.29	
Feb-12	2,557.68	984.20	401.45	1,023.18	148.86	322.10	522.52	623.26	182.62	500.66	79.08	38.84	142.64	
May-12	2,528.14	872.04	375.94	1,096.73	183.44	284.48	670.19	549.06	164.88	426.54	74.81	38.50	140.95	

1. Claimants include those beneficiaries plus, those receiving National Insurance Credits and no monetary payment (many credits-only claimants of Incapacity Benefit (IB) or Severe Disablement Allowance (SDA) will also receive Income Support (IS)/ Pension Credit (PC)).

2. This table focuses on the following out-of-work benefits: Incapacity Benefit (IB), Severe Disablement Allowance (SDA), Income Support (IS) and Employment and Support Allowance (ESA). Claimants are classified as follows:

- ESA (Contributory), SDA or IB/SDA payments, without IS/PC = "Receiving contributory based benefit or SDA only"
- ESA (Contributory and Income Based), or SDA or IB/SDA payments, with IS/PC = "Receiving contributory based benefit or SDA, with income based benefit"
- ESA (Income Based) or IB/SDA credits only with IS/PC = "Receiving income based benefit"
- ESA (Credits only) or IB/SDA credits only without IS/PC = "National Insurance credits only"

2. This table focuses on the following out-of-work benefits: Incapacity Benefit (IB), Severe Disablement Allowance (SDA), Income Support (IS) and Employment and Support Allowance (ESA). Claimants are classified as follows:

- ESA (Contributory), or IB/SDA payments, without IS/PC = "Receiving contributory based benefit only"
- ESA (Contributory and Income Based) or IB/SDA payments with IS/PC = "Receiving contributory and income based benefit"
- ESA (Income Based) or IB/SDA credits only with IS/PC = "Receiving income based benefit"
- ESA (Credits only) or IB/SDA credits only without IS/PC = "National Insurance credits only"

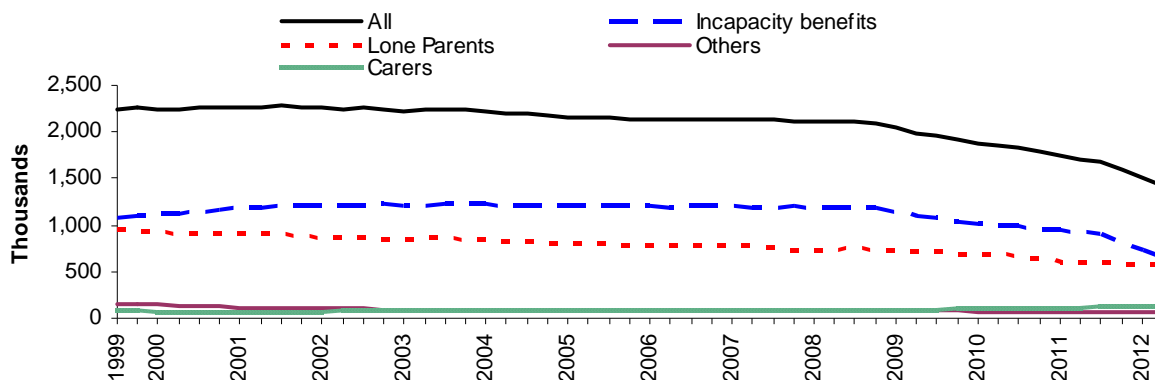
4. Some claimants (including those receiving "National Insurance credits only") are receiving payments from other benefits, such as Housing Benefit or Disability Living Allowance.

5. This table includes claimants under State Pension age. The age at which women reach State Pension age is gradually increasing from 60 to 65 between April 2010 and April 2016 to November 2018. Under current legislation, State Pension age for men and women is planned to increase to: 66 between November 2018 and October 2020; 67 between 2020 and 2036; 68 between 2036 and 2044. These changes introduce a small increase to the number of working age benefit recipients and a small reduction to the number of pension age recipients.

1.4 National Statistics: Income Support

Income Support (IS) was introduced on 11th April 1988 and is an income-related benefit that can be claimed by adults under state pension age that work fewer than 16 hours a week and have insufficient income to meet their needs. Prior to the introduction of Pension Credit in October 2003, IS was available to people aged 60 and over. From 27th October 2008, Employment & Support Allowance (ESA) replaced Incapacity Benefit and Income Support paid on the grounds of incapacity for new claims. The Lone Parent Obligation policy came into effect from 24 November 2008; Lone Parents (LPs) with a youngest child aged 12 or over were no longer able to make a new or repeat claim for Income Support (IS) solely on the basis of their parental status. Existing IS LPs with a youngest child aged 12 or over had their eligibility removed over a period of time commencing 2nd March 2009. From October 2009 this policy was extended to LPs with a youngest child aged 10 or 11 and from October 2010 the policy was extended to LPs with a youngest child aged 7 or over. The Welfare Reform Act 2012 introduced further changes and from 21 May 2012 lone parents are eligible to claim Income Support until their youngest child is five years old.

**Income Support by Statistical Group:
August 1999 to May 2012**



Pension Credit (PC) replaced Minimum Income Guarantee (MIG) in Income Support on 6 October 2003. **MIG claimants have been excluded from this data prior to November 2003.**

At May 2012, the total number of Income Support (IS) claimants was 1.42 million. Claimants of incapacity benefits represented 46% of the IS caseload (654 thousand). Lone Parents (all single claimants with dependants under 16, excluding claimants of incapacity benefits) represented 41% of the IS caseload (577 thousand), while Carers and Others represented 13% of the caseload (186 thousand).

There were 74 thousand new claimants of Income Support in the May 2012 quarter, which represents 5% of the May 2012 caseload. Over the same period, 167 thousand claimants left the benefit, 12% of the caseload at end of May 2012. In the year to May 2012 there were a total of 307 thousand new claims for Income Support and 595 thousand claims were closed.

Table 1.3 Income Support Lone Parents claimants¹: May 2012

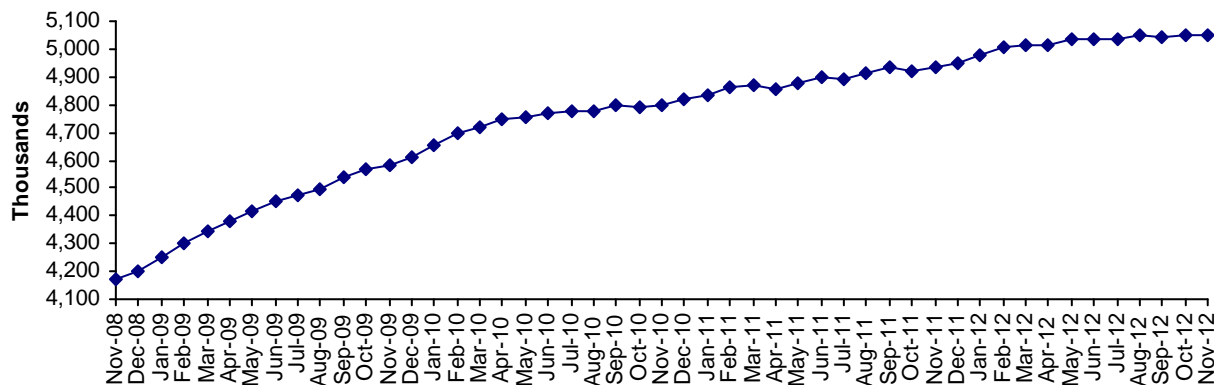
	Total	Thousands	
		Female	Male
All Ages	577.08	560.96	16.13
Unknown Age	-	-	-
Under 18	4.25	4.24	0.01
18-24	168.72	167.22	1.5
25-34	249.15	243.22	5.93
35-44	124.79	119.37	5.42
45-54	27.87	25.09	2.78
55-64	2.30	1.82	0.48

1. Lone Parents are all single claimants with dependants aged under 16, but excluding claimants of incapacity benefits.

1.5 National Statistics: Housing Benefit / Council Tax Benefit

Housing Benefit (HB) was introduced on 1st April 1983 and is an income-related benefit designed to help people on low incomes pay for rented accommodation whether in or out-of-work.

Housing Benefit Recipients: November 2008 to November 2012



At November 2012 there were 5.05 million recipients of Housing Benefit, of whom almost three-quarters were aged under 65. The average weekly amount of Housing Benefit was £89.27.

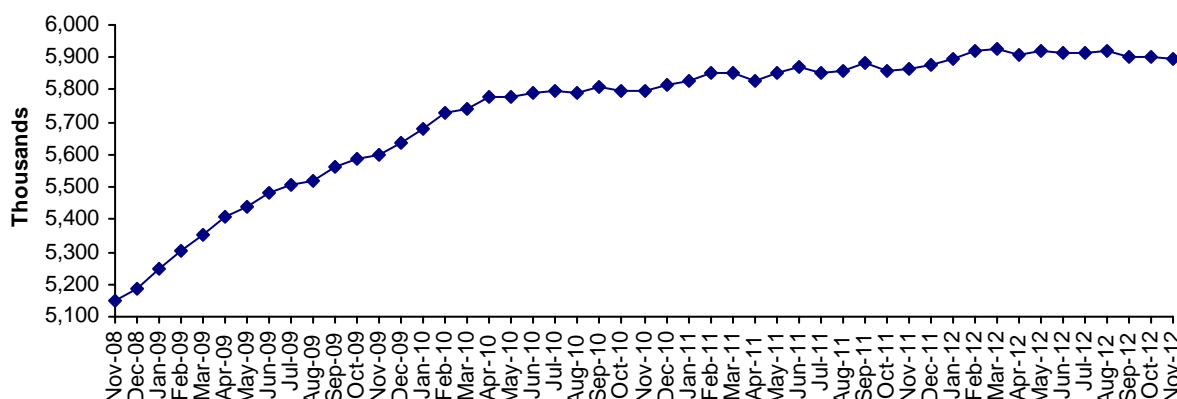
67% of Housing Benefit recipients were tenants of Social Sector. 82% of the 1.66 million Private Sector tenant Housing Benefit recipients were receiving the Local Housing Allowance.

64% of Housing Benefit recipients were also in receipt of Income Support, income-based Jobseeker's Allowance, income-based Employment and Support Allowance or Pension Credit (Guarantee Credit).

Further information on Housing Benefit can be found via [Stat-Xplore](#), which provides users with an interactive visualisation tool to produce charts, graphs and tables, downloadable in a number of different formats. This tool is an experimental release. Changes and enhancements to the tool will be made in future releases, however the statistics within the tool should be considered robust.

Council Tax Benefit (CTB) was introduced on 1st April 1993 and is an income-related benefit, calculated in a similar way to Housing Benefit, which has been designed to help people on low incomes pay their Council Tax.

Council Tax Benefit Recipients: November 2008 to November 2012



At November 2012 there were 5.90 million recipients of Council Tax Benefit (figure excludes second adult rebates), of whom 3.71 million were aged under 65. The average weekly amount of Council Tax Benefit was £15.68.

65% of Council Tax Benefit recipients were also in receipt of Income Support, income-based Jobseeker's Allowance, income-based Employment and Support Allowance or Pension Credit (Guarantee Credit).



Council Tax Benefit will be abolished in April 2013 and replaced by a system of localised support. In England, the Department for Communities and Local Government (DCLG) will be responsible for statistics. The Scottish and Welsh Governments will have similar responsibility. See:

<http://www.communities.gov.uk/localgovernment/localgovernmentfinance/counciltax/counciltaxsupport/>. The summary will cease to report Council Tax Benefit in May 2013, ending with the February 2013 numbers (for technical reasons, March 2013 numbers are not possible). The Housing Benefit series will continue.

Table 1.4 Housing Benefit (HB) / Council Tax Benefit (CTB) recipients^{1,2}: May 2009 – November 2012

Thousands

All Housing Benefit (HB) recipients				All Council Tax Benefit (CTB) recipients		
	Total	Tenure Type		Total	Age Group ³	
		Social Rented Sector	Private Rented Sector		Aged under 65	Aged 65 or over
May-09	4,412.99	3,186.40	1,221.42	5,436.19	3,223.62	2,211.97
Jun-09	4,450.41	3,198.87	1,246.28	5,479.12	3,262.31	2,216.17
Jul-09	4,477.25	3,204.61	1,263.56	5,503.79	3,284.83	2,218.39
Aug-09	4,494.56	3,193.05	1,272.64	5,519.39	3,301.37	2,217.09
Sep-09	4,538.56	3,195.38	1,291.16	5,563.92	3,344.59	2,219.13
Oct-09	4,568.73	3,203.50	1,310.36	5,588.29	3,366.77	2,221.29
Nov-09	4,579.18	3,234.06	1,341.08	5,600.83	3,381.33	2,219.27
Dec-09	4,610.73	3,243.61	1,363.97	5,635.24	3,413.07	2,221.95
Jan-10	4,651.10	3,261.67	1,386.51	5,676.83	3,453.12	2,223.49
Feb-10	4,700.16	3,283.76	1,413.84	5,727.14	3,502.35	2,224.58
Mar-10	4,718.94	3,288.17	1,428.08	5,743.60	3,517.47	2,225.93
Apr-10	4,746.32	3,294.90	1,448.70	5,780.20	3,549.78	2,230.23
May-10	4,751.53	3,293.63	1,455.26	5,780.09	3,553.83	2,226.07
Jun-10	4,765.73	3,299.64	1,463.49	5,788.76	3,562.14	2,226.43
Jul-10	4,777.43	3,303.69	1,471.13	5,798.60	3,571.76	2,226.65
Aug-10	4,776.66	3,300.37	1,473.58	5,791.80	3,567.83	2,223.78
Sep-10	4,797.46	3,308.46	1,486.42	5,811.26	3,585.36	2,225.72
Oct-10	4,789.49	3,299.63	1,487.33	5,794.77	3,572.29	2,222.30
Nov-10	4,798.32	3,300.61	1,495.18	5,795.10	3,573.80	2,221.09
Dec-10	4,817.16	3,303.78	1,510.80	5,812.41	3,590.74	2,221.47
Jan-11	4,833.47	3,308.90	1,521.98	5,825.94	3,605.59	2,220.15
Feb-11	4,865.40	3,322.56	1,540.14	5,854.11	3,636.24	2,217.67
Mar-11	4,869.04	3,320.35	1,545.86	5,851.58	3,633.82	2,217.57
Apr-11	4,856.15	3,312.52	1,540.75	5,828.58	3,619.00	2,209.40
May-11	4,879.18	3,324.27	1,552.09	5,852.13	3,639.71	2,212.26
Jun-11	4,901.39	3,335.15	1,563.24	5,868.55	3,655.91	2,212.47
Jul-11	4,893.37	3,330.16	1,560.41	5,850.24	3,641.78	2,208.31
Aug-11	4,909.51	3,336.79	1,569.73	5,860.15	3,649.83	2,210.16
Sep-11	4,934.11	3,349.00	1,582.13	5,883.52	3,669.43	2,213.91
Oct-11	4,921.92	3,340.78	1,578.21	5,860.20	3,649.57	2,210.45
Nov-11	4,935.92	3,345.26	1,587.72	5,865.42	3,654.32	2,210.93
Dec-11	4,952.26	3,349.15	1,600.08	5,877.40	3,664.95	2,212.28
Jan-12	4,976.21	3,359.94	1,613.20	5,895.32	3,681.76	2,213.40
Feb-12	5,004.50	3,373.35	1,628.08	5,919.55	3,707.53	2,211.87
Mar-12	5,014.65	3,375.38	1,636.12	5,924.74	3,712.71	2,211.89
Apr-12	5,012.70	3,372.37	1,637.19	5,910.06	3,709.18	2,200.74
May-12	5,031.74	3,382.87	1,645.73	5,922.41	3,722.15	2,200.13
Jun-12	5,032.70	3,383.45	1,646.00	5,912.63	3,717.52	2,194.99
Jul-12	5,037.64	3,387.03	1,647.33	5,911.57	3,716.76	2,194.67
Aug-12	5,051.12	3,393.75	1,653.86	5,922.13	3,727.11	2,194.89
Sep-12	5,041.04	3,388.14	1,649.31	5,902.92	3,711.98	2,190.80
Oct-12	5,046.41	3,390.34	1,652.55	5,899.88	3,710.14	2,189.60
Nov-12	5,050.40	3,391.41	1,655.36	5,896.11	3,708.01	2,187.97

Source: Single Housing Benefit Extract (SHBE)

Notes:

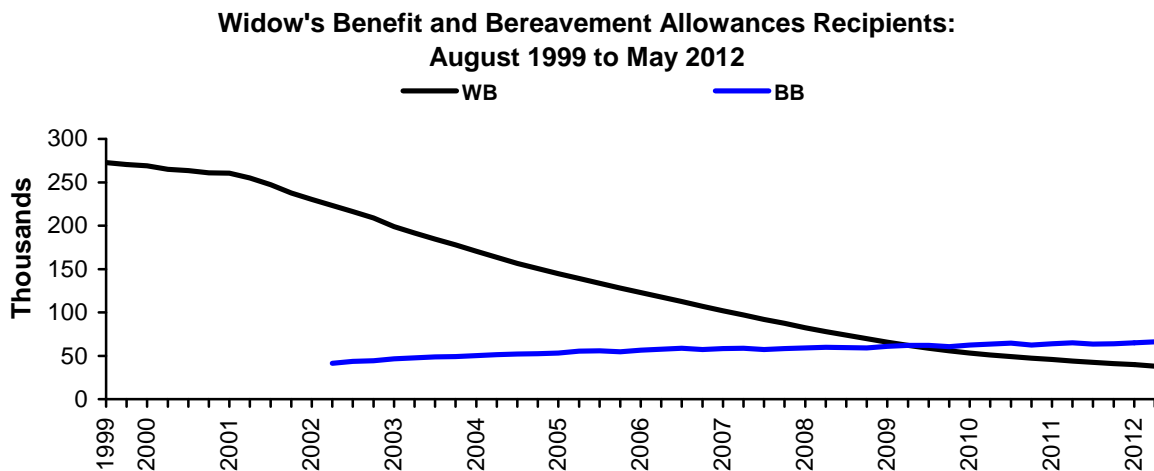
1. Housing Benefit and Council Tax Benefit recipients are individual claimants who had a live in payment claim on the second Thursday in each month. Council Tax Benefit recipients exclude Second Adult Rebate cases.
2. Caseload figures are rounded to the nearest 10. Components may not sum to total due to independent rounding.
3. Age groups are based on the age at count date (second Thursday in each month), of either:
 - a) the recipient if they are single, or
 - b) the elder of the recipient or partner if claiming as a couple.

Latest statistical data available from: <http://research.dwp.gov.uk/asd/index.php?page=hbctb>

1.6 National Statistics: Widows Benefit & Bereavement Benefits

Widow's Benefit (WB) was introduced on 6th July 1948 and is payable to women widowed between 11th April 1988 and 8th April 2001 inclusive. There are three types of WB: Widow's Payment, Widowed Mother's Allowance and Widow's Pension. Women widowed before 11th April 1988 continue to receive Widow's Benefit based on the rules that existed before that date.

Bereavement Benefits (BB) was introduced on 9th April 2001 as a replacement for Widow's Benefit. It is payable to both men and women widowed on or after 9th April 2001. There are three types of BB: Bereavement Payment, Widowed Parent's Allowance and Bereavement Allowance.



At May 2012, there were 38 thousand claimants of Widow's Benefit, a fall of 6 thousand on a year earlier. Of these, 33 thousand were in receipt of Widow's Pension and 5 thousand Widowed Mother's Allowance.

At May 2012, there were 66 thousand claimants of Bereavement Allowances, an increase of 1 thousand on a year earlier. Of these, 20 thousand were in receipt of Bereavement Allowance and 46 thousand in receipt of Widowed Parent's Allowance.

There were 7 thousand new claimants of Bereavement Allowances/Widows Benefit in the May 2012 quarter, which represents 7% of the May 2012 caseload.

Over the same period, 8 thousand claimants left the benefits, 8% of the caseload at May 2012.

In the year to May 2012, there were a total of 28 thousand new claims for Bereavement Allowances/Widows Benefit and 34 thousand claims were closed.

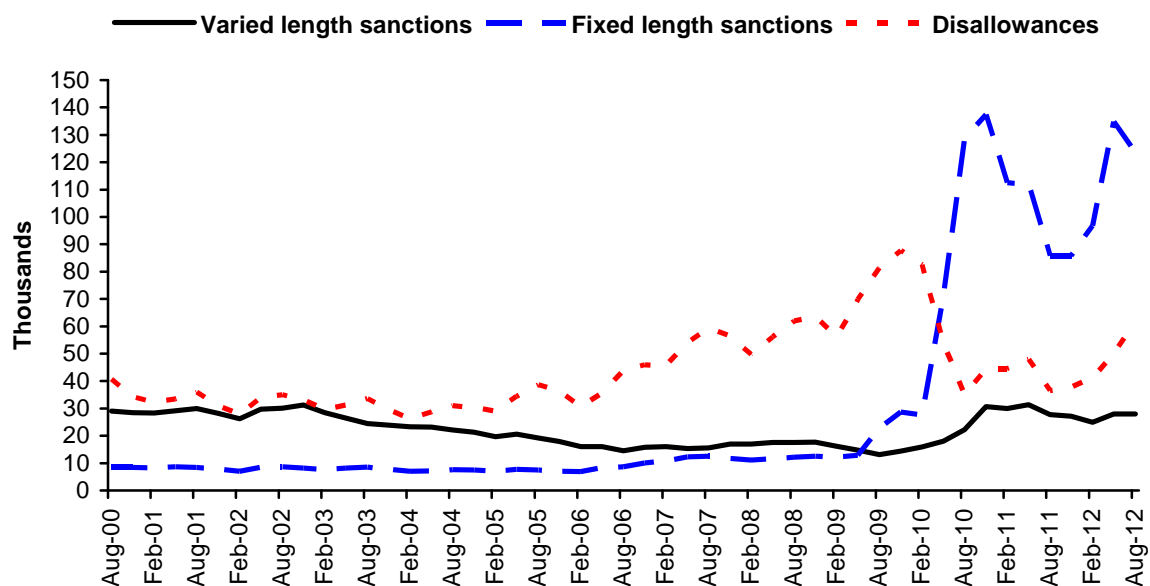
Latest statistical data available from: <http://83.244.183.180/100pc/tabtool.html>

1.7 National Statistics: Jobseeker's Allowance sanction and disallowance decisions

A JSA claimant can have their claim sanctioned (payment is temporarily suspended) or disallowed (entitlement ends) if they are deemed not to have just cause for failing to fulfil the conditions of their claim. Sanctions can be 'Varied length' or 'Fixed length' and last between 1 and 26 weeks in duration. Disallowances result in the claim ending.

On 22nd October 2012, the new legislation for JSA Sanctions came into force. This meant a change to the current 26 reasons why a JSA claimant can be sanctioned to a new three tier sanctions regime which seeks to broadly align the JSA sanctions regimes with the model to be introduced under Universal Credit.. See: (http://www.legislation.gov.uk/ukdsi/2012/9780111526149/pdfs/ukdsi_9780111526149_en.pdf). These changes will be reflected in DWP statistics. Timescales for release of these statistics are uncertain. Further information will be provided in future Summaries.

Adverse decisions for JSA Labour Market questions for Sanctions and Disallowances per quarter: August 2000 to August 2012



In the quarter ending August 2012 there were 461 thousand referrals for JSA sanctions where a decision was made, of which 213 thousand were adverse (i.e. a sanction or disallowance was applied).

These statistics show 488 thousand referrals for JSA sanctions were made and completed by the end of August 12 where claimants failed to participate in the Work Programme. Of these, 154 thousand resulted in an adverse decision; 131 thousand received a favourable decision and 204 thousand were cancelled or reserved to be reviewed/ applied on a future benefit claim.

These statistics show 47 thousand referrals for JSA sanctions were made and completed by the end of August 12 where claimants failed to participate in Mandatory Work Activity. Of these, 10 thousand resulted in an adverse decision; 14 thousand received a favourable decision and 22 thousand were cancelled or reserved to be reviewed/ applied on a future benefit claim.

Please Note: This summary includes data on decisions made for sanction referrals only, not opinions.

Latest statistical data available from: <http://83.244.183.180/sanction/sanction/LIVE/tabtool.html>

2. Early Estimates for Working Age Inactive Benefit Client Group

2.1 Employment and Support Allowance / incapacity benefits (ESA/IB) client group

Table 2.1: Working-age ESA/IB client group February 2010 to December 2012

Time Series	National Statistic	Early Estimate
	Number of Claimants (thousands)	Number of Claimants (thousands)
Feb-10	2,614.76	
May-10	2,613.10	
Aug-10	2,606.61	
Nov-10	2,586.42	
Feb-11	2,578.66	
May-11	2,570.22	
Aug-11	2,582.18	
Nov-11	2,575.60	
Feb-12	2,557.68	
May-12	2,528.14	
Jun-12		2,510
Jul-12		2,505
Aug-12		2,500
Sep-12		2,495
Oct -12		2,495
Nov -12		2,485
Dec -12		2,490

Table 2.2: Working-age ESA/IB client group claiming NI credits only February 2010 to December 2012

Time Series	National Statistics Source Data	Early Estimate
	National Insurance Credits only (percentage)	National Insurance Credits only (percentage)
Feb-10	5.7%	
May-10	5.7%	
Aug-10	5.7%	
Nov-10	5.8%	
Feb-11	5.6%	
May-11	5.6%	
Aug-11	5.5%	
Nov-11	5.8%	
Feb-12	5.8%	
May-12	7.3%	
Jun-12		7.1%
Jul-12		7.1%
Aug-12		6.9%
Sep-12		7.2%
Oct -12		7.4%
Nov -12		7.3%
Dec -12		7.3%

The working-age **ESA/IB** early estimate for November is **2.490 million** to the nearest 5,000. This represents a fall of 1.5 per cent since May 2012 (the latest National Statistic). As the Incapacity Benefit reassessment continues, users should be aware that there may be increased uncertainty around these early estimates.

In December 2012 approximately 92.7% were in receipt of benefit payments from Incapacity Benefit, Severe Disablement Allowance, Employment and Support Allowance, Income Support, Pension Credit. The remaining 7.3% percent received National Insurance credits only (i.e. no payment of IB, SDA, ESA, IS or PC). A noticeable rise in the proportion of claimants receiving National Insurance credits was seen in May 2012. This is due to the introduction of a 365 day limit on receipt of contribution based ESA for those in the Work Related Activity Group on 1 May 2012.

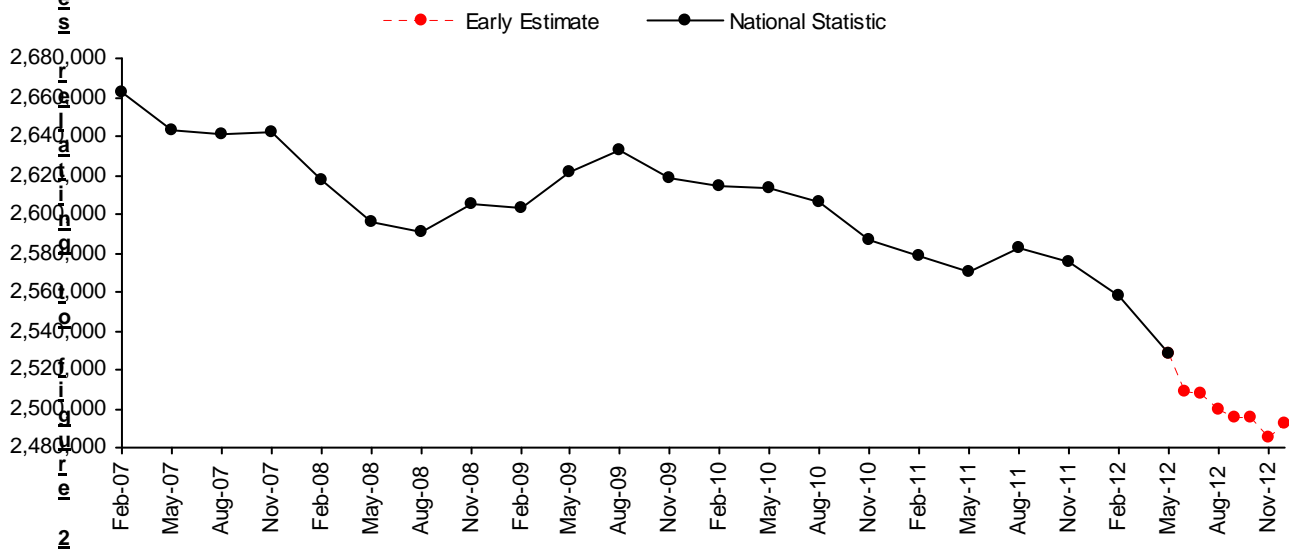
Final figures for the quarter ending August 2012 will be released on 20 March 2013. **The most recent National Statistics show 2.528 million individuals were in the ESA/IB client group at May 2012.**

See: <http://research.dwp.gov.uk/asd/index.php?page=tabtool>

These figures are estimates of the final National Statistic, to give an indication of their accuracy, over the past year the early estimates in Table 2.1 have been revised by an average of 0.5 per cent. See notes section for more information. Further details on the accuracy of the early estimates in Table 2.2 can also be found there.

The age at which women reach State Pension age is gradually increasing from 60 to 65 between April 2010 and April 2016 to November 2018. Under current legislation, State Pension age for men and women is planned to increase to: 66 between November 2018 and October 2020; 67 between 2034 and 2036; 68 between 2044 and 2046. Please see the Welfare Reform section of the notes for further information.

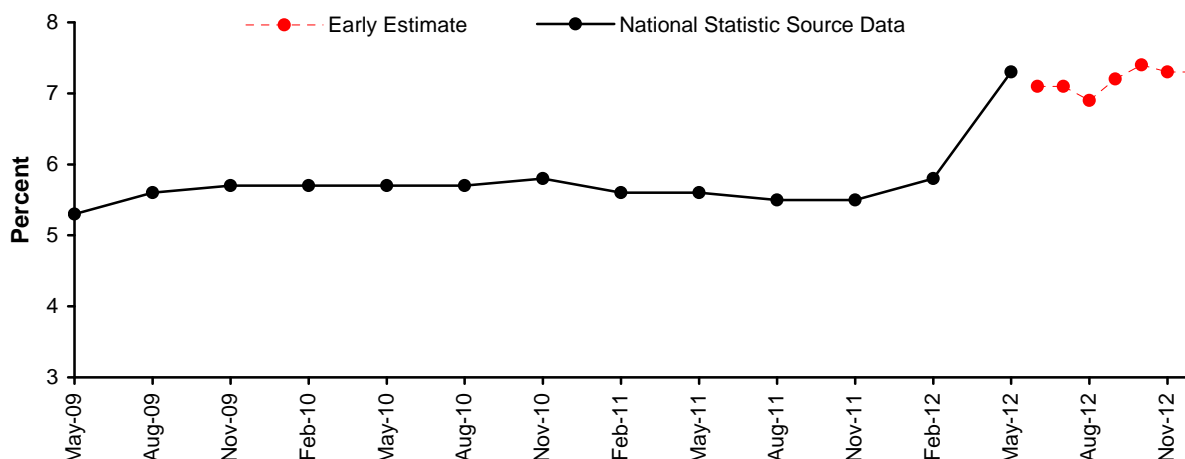
Figure 2.1: National Statistics to May 2012 and early estimates of numbers in working age ESA/IB client group: March 2012 to December 2012



1 and table 2.1:

1. ESA/IB: From November 2008 ESA replaced Incapacity Benefit (IB) and Income Support paid on the grounds of incapacity for new claims from 27 October 2008. Prior to this the "incapacity benefits group" referred to claimants of IB or Severe Disablement Allowance including people claiming Income Support on the grounds of incapacity.
2. The red dotted line in the chart above emphasises that the figures are estimates and official statistics.
3. Source data: *DWP Information, Governance and Security: Work and Pensions Longitudinal Study*
4. When the next quarterly National Statistics are published they will be included as a National Statistic in Table 2.1, and the monthly early estimates for this quarter will be removed from Table 2.1.

Figure 2.2: National Statistics and Early estimates of the proportion of working age inactive benefit claimants in the ESA/IB client group claiming NI credits only: May 2009 to December 2012



Notes relating to figure 2.2 and table 2.2:

1. ESA/IB: From November 2008 ESA replaced Incapacity Benefit (IB) and Income Support paid on the grounds of incapacity for new claims from 27 October 2008. Prior to this the "incapacity benefits group" referred to claimants of IB or Severe Disablement Allowance including people claiming Income Support on the grounds of incapacity.
2. On 1 May 2012, a 365 day limit on the receipt of contribution based ESA for those in the Work Related Activity Group was introduced.
3. Source data: *DWP Information, Governance and Security: Work and Pensions Longitudinal Study*
4. When the next quarterly National Statistics figure is available they will be included in Table 2.2, and the monthly early estimates for this quarter will be removed from Table 2.2. This indicator has formed a new National Statistics table at table 1.3.

2.2 Income Support lone parent (ISLP) client group

Table 1.2 ISLP client group February 2010 to December 2012

Time Series	Thousands	
	National Statistics Number of Claimants	Early Estimate Number of Claimants
Feb-10	692.02	
May-10	679.15	
Aug-10	672.35	
Nov-10	648.30	
Feb-11	613.78	
May-11	595.40	
Aug-11	595.29	
Nov-11	581.62	
Feb-12	584.17	
May-12	577.08	
Jun-12		565
Jul-12		555
Aug-12		545
Sep-12		530
Oct-12		515
Nov-12		510
Dec-12		510

The working-age **ISLP** early estimate for December 2012 is **510 thousand** to the nearest 5,000. This represents a fall of 11.5 per cent since May 2012 (the latest National Statistic).

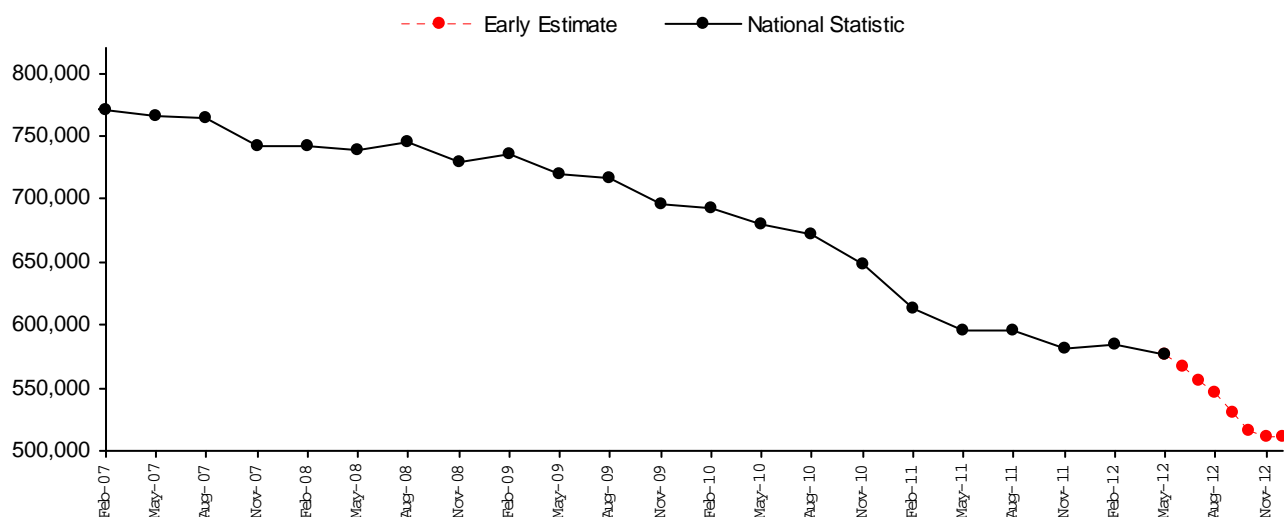
National Statistics are available for quarters up to the end of May 2012. Final figures for the quarter ending August 2012 will be released on 20 March 2013. **The most recent National Statistics show 577 thousand individuals were in the ISLP client group at May 2012.** See:

<http://research.dwp.gov.uk/asd/index.php?page=tabtool>

The number of lone parents claiming Income Support has been affected by the Lone Parent Obligations policy changes which came into effect from 24 November 2008. For more information see the notes section. The figures are estimates of the final National Statistic, to give an indication of their accuracy, over the past year the early estimates have been revised by an average of 0.4 per cent. See the notes section for more information.

The age at which women reach State Pension age is gradually increasing from 60 to 65 between April 2010 and April 2016 to November 2018. Under current legislation, State Pension age for men and women is planned to increase to: 66 between November 2018 and October 2020; 67 between 2034 and 2036; 68 between 2044 and 2046. This will introduce a small increase to the number of working age benefit recipients and a small reduction to the number of pension age recipients. Please see the Welfare Reform section of the Notes for further information.

Figure 2.2: National Statistics to May 2012 and early estimates of numbers in working age ISLP client group: March 2012 to November 2012



Notes relating to figure 2.2 and table 2.2:

1. ISLP: claimants on IS with child under 16 and no partner.

New and repeat customers with the following conditions will no longer be entitled to Income Support:

- A youngest child aged 12 or over from November 2008;
- A youngest child aged 10 or over from October 2009;
- A youngest child aged 7 or over from October 2010.
- The Welfare Reform Act 2012 introduced further changes and from May 2012 lone parents are only eligible to claim Income Support until their youngest child is five years old.

2. The red dotted line in the chart above emphasises that the figures are estimates and official statistics.

3. Source data: *DWP Information, Governance and Security Directorate: Work and Pensions Longitudinal Study*

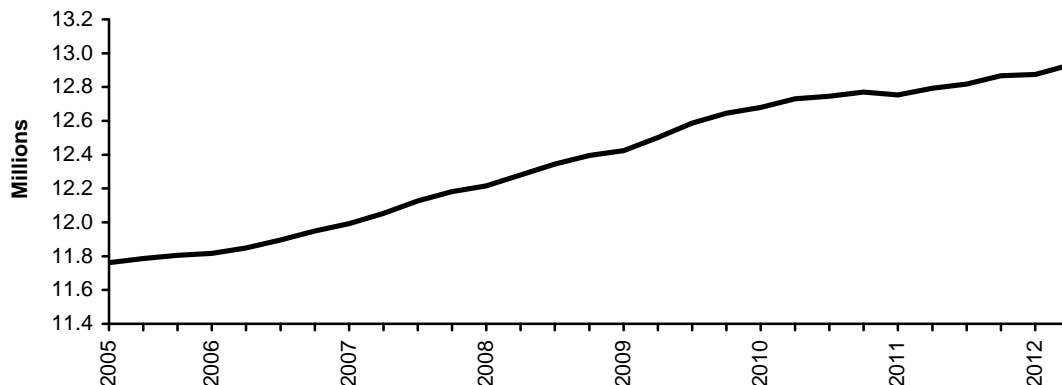
4. When the next quarterly National Statistics are published they will be included as a quarterly National Statistic in Table 2.2, and the monthly early estimates for this quarter will be removed from Table 2.2.

Latest statistical data available from: http://research.dwp.gov.uk/asd/index.php?page=early_ests

3.1 National Statistics: Pensioner client group

The Pensioner client group covers claimants, over State Pension age (see notes section 7), of at least one of the following benefits: State Pension, Pension Credit, Attendance Allowance, Widow's Benefit, Disability Living Allowance, Incapacity Benefit, and Severe Disablement Allowance. They are split into statistical groups that reflect their main reason for claiming benefit.

Pensioner Client Group: May 2005 to May 2012



At May 2012 there were 12.9 million claimants in the Pensioner Client Group, an increase of 138 thousand since May 2011. Of these, 18% were in receipt of Pension Credit. 51% of these Pension Credit claimants were also claiming Attendance Allowance or Disability Living Allowance.

Table 3.1 Pensioner Client Group recipients: February 2006 – May 2012

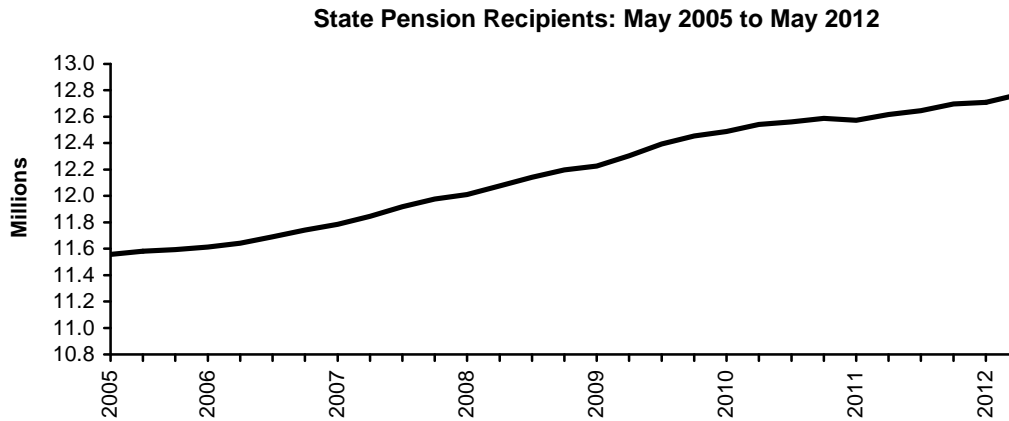
		Thousands							
		SP and PC: Disabled	SP and PC: Not Disabled	SP but not PC: Disabled	SP but not PC: Not Disabled	PC but not SP: Disabled	PC but not SP: Not Disabled	Neither SP nor PC: Disabled	Neither SP nor PC: Not Disabled
Total									
Feb -06	11,817.23	1,081.17	1,277.97	1,315.46	7,934.50	73.53	73.75	37.77	23.08
May -06	11,847.97	1,088.48	1,278.31	1,322.93	7,949.50	73.76	74.05	38.06	22.88
Aug -06	11,896.50	1,100.55	1,274.33	1,338.09	7,973.44	74.29	74.59	38.42	22.78
Nov -06	11,949.62	1,113.70	1,269.09	1,351.57	8,004.82	74.87	74.34	38.69	22.54
Feb -07	11,992.45	1,114.06	1,260.09	1,356.42	8,052.20	74.56	74.19	38.60	22.33
May -07	12,053.77	1,122.36	1,252.29	1,370.93	8,097.85	74.82	74.26	38.97	22.29
Aug -07	12,127.16	1,133.46	1,243.25	1,389.71	8,152.28	74.55	73.62	38.92	21.37
Nov -07	12,182.27	1,140.25	1,234.23	1,403.83	8,197.32	74.21	73.15	38.72	20.56
Feb -08	12,216.39	1,139.13	1,223.86	1,410.21	8,237.94	73.56	72.92	38.75	20.02
May -08	12,279.39	1,144.14	1,214.40	1,428.68	8,287.34	73.68	72.69	38.97	19.50
Aug -08	12,344.41	1,155.40	1,206.30	1,448.69	8,331.36	73.72	72.04	38.76	18.14
Nov -08	12,396.06	1,164.55	1,201.42	1,464.57	8,365.41	73.51	71.41	38.17	17.02
Feb -09	12,423.79	1,159.85	1,193.82	1,469.67	8,402.45	73.03	70.86	37.81	16.31
May -09	12,500.78	1,167.68	1,189.05	1,489.12	8,457.71	73.20	70.59	37.76	15.66
Aug -09	12,586.92	1,177.58	1,184.10	1,512.11	8,519.54	72.79	69.22	36.72	14.88
Nov -09	12,645.64	1,182.96	1,178.49	1,526.14	8,565.92	72.63	68.50	36.54	14.46
Feb -10	12,679.66	1,177.97	1,175.36	1,528.61	8,604.63	72.79	68.75	37.27	14.29
May -10	12,729.68	1,180.95	1,171.73	1,541.77	8,645.79	72.14	67.70	36.16	13.44
Aug -10	12,746.19	1,184.76	1,166.81	1,550.51	8,658.69	70.41	66.85	35.34	12.82
Nov -10	12,770.78	1,182.21	1,161.68	1,553.01	8,691.37	69.42	66.18	34.45	12.47
Feb -11	12,752.59	1,170.17	1,156.78	1,545.78	8,699.91	68.39	65.61	34.06	11.89
May -11	12,792.21	1,165.18	1,149.43	1,552.17	8,748.95	66.97	64.89	33.14	11.49
Aug -11	12,818.47	1,164.34	1,144.77	1,561.19	8,775.04	66.04	63.85	32.42	10.82
Nov -11	12,867.40	1,159.36	1,141.73	1,568.53	8,827.17	64.99	63.10	32.06	10.47
Feb -12	12,875.02	1,146.95	1,136.04	1,566.70	8,857.40	64.08	62.63	31.32	9.89
May 12	12,930.13	1,123.25	1,096.63	1,587.22	8,959.39	62.41	61.29	30.56	9.39



Latest statistical data available from: <http://83.244.183.180/100pc/tabtool.html>

3.2 National Statistics: State Pension

State Pension (SP) was introduced on 1st January 1909 and is paid to people who have reached the state pension age and who fulfil the residency and contributions conditions. The age at which women reach State Pension age is gradually increasing from 60 to 65 between April 2010 and April 2016 to November 2018. Under current legislation, State Pension age for men and women is planned to increase to: 66 between November 2018 and October 2020; 67 between 2034 and 2036; and 68 between 2044 and 2046.



At May 2012, there were 12.8 million claimants of State Pension, a rise of 151 thousand on a year earlier. Of these, 40% were male and 60% female.

The average weekly amount in payment at May 2012 was £117.99, a rise of £7.45 since May 2011.

In quarter to May 2012, there were a total of 186 thousand new claims for State Pension which represents 1.5% of the caseload. Over the same period, 132 thousand claimants left the benefit, representing 1.0% of the caseload at May 2012.

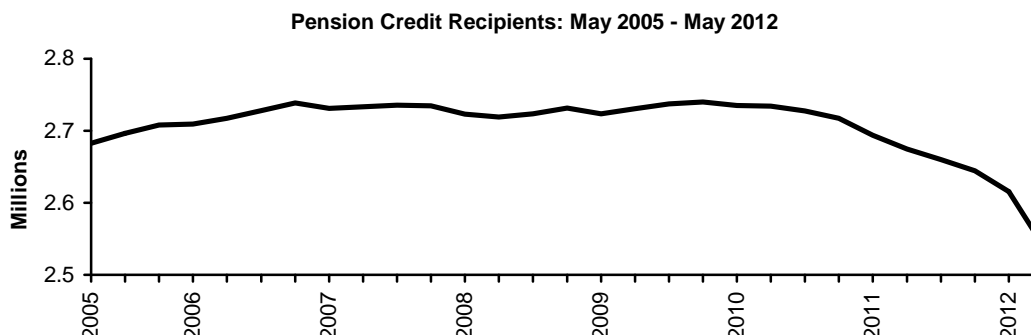
In the year to May 2012, there were a total of 630 thousand new claims for State Pension and 503 thousand claims were closed.

Table 3.2 State Pension recipients: November 2006 – May 2012

	All	Male	Thousands Female
Nov -06	11,742.01	4,408.91	7,333.10
Feb -07	11,785.67	4,418.99	7,366.68
May -07	11,846.43	4,437.99	7,408.44
Aug -07	11,919.12	4,463.09	7,456.04
Nov -07	11,976.03	4,484.97	7,491.06
Feb -08	12,011.54	4,499.53	7,512.02
May -08	12,074.99	4,526.79	7,548.20
Aug -08	12,142.20	4,555.63	7,586.57
Nov -08	12,196.44	4,578.74	7,617.70
Feb -09	12,226.26	4,594.18	7,632.08
May -09	12,304.07	4,633.62	7,670.44
Aug -09	12,393.84	4,678.30	7,715.54
Nov -09	12,453.99	4,709.50	7,744.49
Feb -10	12,487.07	4,728.18	7,758.89
May -10	12,540.75	4,759.36	7,781.39
Aug -10	12,561.26	4,791.10	7,770.16
Nov -10	12,588.75	4,814.08	7,774.67
Feb -11	12,573.11	4,832.31	7,740.80
May -11	12,616.24	4,871.26	7,744.98
Aug -11	12,645.85	4,919.06	7,726.79
Nov -11	12,697.31	4,966.20	7,731.11
Feb -12	12,707.64	5,012.17	7,695.46
May -12	12,767.07	5,068.96	7,698.12

3.3 National Statistics: Pension Credit

Pension Credit (PC) was introduced on 6th October 2003 and replaced Minimum Income Guarantee (MIG). For people aged over the female state pension age (see Notes, section 7), the Guarantee Credit element guarantees an income at a set level. People aged 65 or over (and couples where one member is 65 or over) may also be entitled to Savings Credit if they have modest income from savings, investments or a second pension.



At May 2012, there were 2.54 million claimants of Pension Credit (3.10 million including partners), a fall of 133 thousand on the previous year. This fall is due to the increase in the female State Pension age, which is also the age at which people become eligible for Pension Credit, see Notes, section 7 for details. Of these Pension Credit claimants, 1.02 million claimed Guarantee Credit only, 964 thousand claimed Guarantee and Savings Credit, and 561 thousand were claiming Savings Credit only. Note, certain aspects of the April 2012 uprating for Pension Credit were applied to the administrative computer system in advance, hence, the statistics in February 2012 show the Pension Credit type based on 2012/13 rates. However, claimants were still being paid based on 2011/12 rates. The average weekly amount of Pension Credit in payment at May 2012 was £57.60, a fall of £0.14 since May 2011.

Statistics on benefit flows show there were 166 thousand new claims to Pension Credit in the year to May 2012. There were 168 thousand new claims to Pension Credit in the financial year 2011/2012. A small number of claims take a long time to process and are still outstanding at the cut off point for producing these statistics. This means that the statistics undercounts the final number of claims by a small percentage (around 2%).

Table 3.3 Pension Credit claimants: May 2006 – May 2012

		Thousands			
	Total	Guarantee Credit only	Guarantee Credit & Savings Credit	Savings Credit only	Still on Minimum Income Guarantee
Nov -06	2,738.56	798.13	1,325.87	614.54	0.02
Feb -07	2,730.94	800.11	1,327.78	603.03	0.03
May -07	2,733.50	805.73	1,330.09	597.65	0.02
Aug -07	2,735.72	814.42	1,321.95	599.33	0.03
Nov -07	2,734.54	823.57	1,310.05	600.90	0.03
Feb -08	2,723.14	865.19	1,265.43	592.50	0.02
May -08	2,719.14	882.07	1,246.24	590.80	0.03
Aug -08	2,723.53	889.74	1,241.62	592.15	0.03
Nov -08	2,731.37	901.23	1,232.25	597.86	0.03
Feb -09	2,723.61	913.40	1,214.69	595.49	0.03
May -09	2,730.56	925.71	1,205.23	599.59	0.03
Aug -09	2,737.29	935.59	1,199.61	602.05	0.03
Nov -09	2,739.86	953.04	1,209.00	577.79	0.03
Feb -10	2,735.16	955.39	1,204.66	575.08	0.03
May -10	2,734.17	954.36	1,202.41	577.37	0.03
Aug -10	2,727.56	952.16	1,195.80	579.57	0.03
Nov -10	2,717.28	951.53	1,184.88	580.84	0.03
Feb -11	2,693.96	947.51	1,162.01	584.42	0.02
May -11	2,674.67	936.96	1,148.09	589.59	0.03
Aug -11	2,659.82	927.74	1,140.70	591.35	0.02
Nov -11	2,644.45	923.37	1,130.93	590.13	0.02
Feb -12	2,615.54	1,042.38	1,013.68	559.46	0.02
May -12	2,541.54	1,015.90	964.26	561.36	0.02

1. Pension Credit replaced MIG on the 6th Oct 2003, however a small number of residual cases remain on MIG.

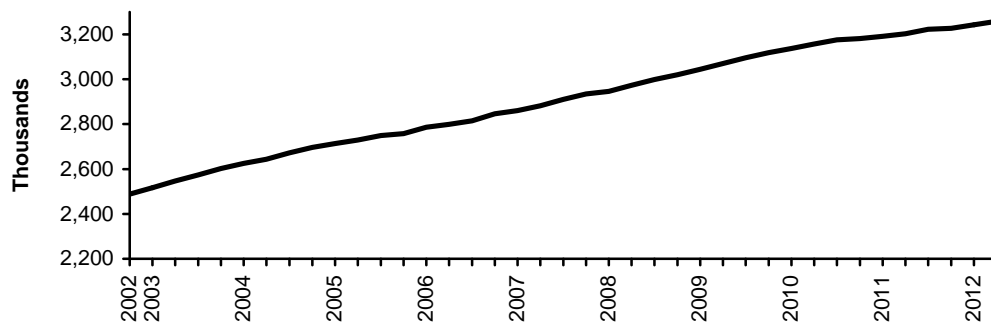
Latest statistical data available from: <http://83.244.183.180/100pc/tabtool.html>

4. Disabled and Carers

4.1 National Statistics: Disability Living Allowance

Disability Living Allowance (DLA) was introduced on 1st April 1992 and is a benefit for people who have become disabled before the age of 65 and who need assistance with personal care or mobility.

Disability Living Allowance Recipients: November 2002 to May 2012



At May 2012 3.26 million people were receiving Disability Living Allowance (not including suspended cases), a rise of 56 thousand on a year earlier. Of these claimants 50% were male. Both the male and female caseloads are rising, with males rising by 29 thousand and females by 26 thousand in the year to May 2012.

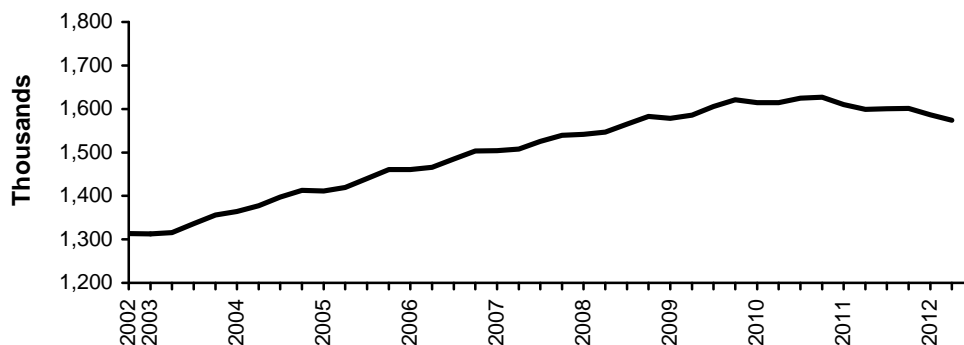
At May 2012, 11% of recipients were children, 57% were working age and 33% were pension age (a small number are an unknown age).

Latest statistical data available from: <http://83.244.183.180/100pc/tabtool.html>

4.2 National Statistics: Attendance Allowance

Attendance Allowance (AA) was introduced on 6th December 1971 and is a benefit for people over the age of 65 who are so severely disabled, physically or mentally, that they need a great deal of help with personal care or supervision. Those requiring constant help receive the higher rate of benefit.

Attendance Allowance Cases in Payment: November 2002 to May 2012

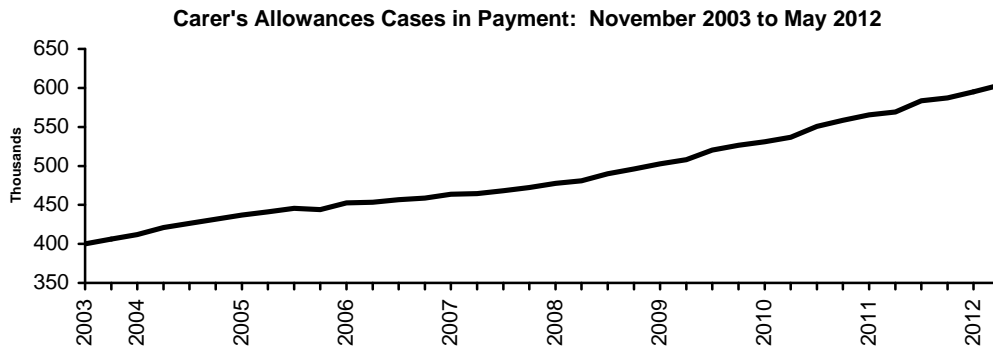


At May 2012 there were 1.57 million people receiving Attendance Allowance (excluding suspended cases), a fall of 25 thousand on a year earlier. Of these, 33% were male and 67% female. The male caseload has decreased by 4 thousand and the female caseload has decreased by 22 thousand in the year to May 2012. At May 2012, 68% were aged 80 or over.

Latest statistical data available from: <http://83.244.183.180/100pc/tabtool.html>

4.3 National Statistics: Carer's Allowance

Carer's Allowance (CA) was introduced on 5th July 1976; it is paid to carers who look after a severely disabled person for at least 35 hours a week. The severely disabled person must be getting either higher or middle rate DLA care component or AA or maximum rate Constant Attendance Allowance with their War Pension or Industrial Injuries Disablement Benefit.



At May 2012, there were 604 thousand people receiving Carer's Allowance (not including underlying entitlement cases). 27% of claimants were male, and 73% female. At May 2012, there were a further 444 thousand people entitled to Carer's Allowance but not receiving any payment due to overlapping benefit provisions (i.e. underlying entitlement cases).

Table 4.1 Awards currently in payment for Disability Living Allowance, Carer's Allowance and Attendance Allowance: November 2003 – May 2012

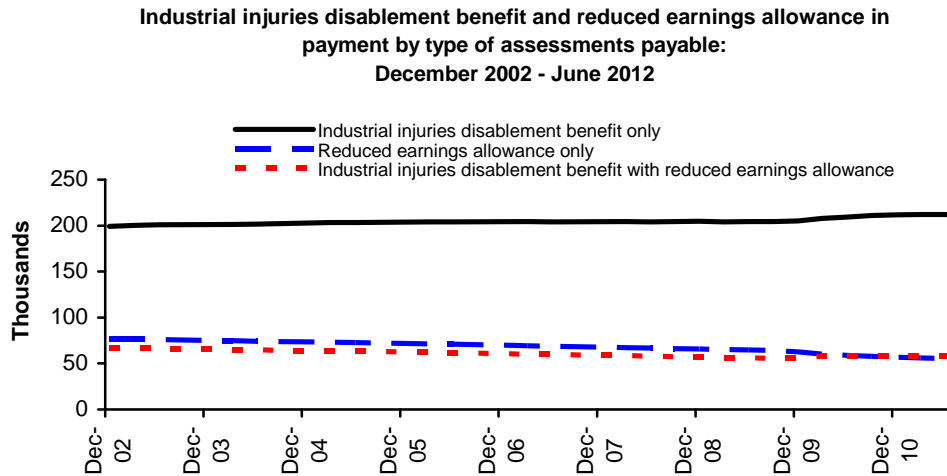
	Disability Living Allowance	Attendance Allowance	Carer's Allowance ¹
			Thousands
May -04	2,644.28	1,377.35	421.18
Aug -04	2,672.16	1,397.30	426.34
Nov -04	2,696.28	1,412.50	431.66
Feb -05	2,712.91	1,411.33	436.94
May -05	2,729.72	1,419.42	441.03
Aug -05	2,749.48	1,440.09	445.43
Nov -05	2,757.64	1,460.25	444.09
Feb -06	2,785.68	1,460.57	452.54
May -06	2,799.16	1,465.59	453.54
Aug -06	2,814.29	1,484.58	456.70
Nov -06	2,845.75	1,503.05	458.93
Feb -07	2,860.79	1,503.85	463.50
May -07	2,881.83	1,507.50	464.67
Aug -07	2,909.98	1,525.61	468.06
Nov -07	2,934.44	1,539.32	472.42
Feb -08	2,945.57	1,541.58	477.66
May -08	2,973.54	1,546.68	480.73
Aug -08	2,999.65	1,565.00	490.03
Nov -08	3,019.70	1,582.81	496.14
Feb -09	3,043.99	1,578.64	502.50
May -09	3,070.61	1,585.79	507.97
Aug -09	3,096.30	1,605.92	520.35
Nov -09	3,119.01	1,621.03	526.62
Feb -10	3,137.73	1,614.17	530.89
May -10	3,157.31	1,614.27	536.90
Aug -10	3,176.20	1,624.66	550.86
Nov -10	3,181.08	1,626.91	558.47
Feb -11	3,192.09	1,610.29	565.50
May -11	3,202.91	1,599.12	569.24
Aug -11	3,222.69	1,600.67	583.33
Nov -11	3,226.79	1,601.09	587.07
Feb -12	3,243.53	1,586.55	594.86
May -12	3,258.44	1,573.63	603.77

1. Data is not available prior to August 2003.

Latest statistical data available from: <http://83.244.183.180/100pc/tabtool.html>

4.4 National Statistics: Industrial Injuries Disablement Benefit

Industrial Injuries Disablement Benefit (IIDB) was introduced on 5th July 1948 and is a benefit for people who are disabled because of an industrial accident or prescribed industrial disease. Since 1st October 1986 any claim resulting in an assessment of less than 14% disabled does not normally attract benefit.



There were 320 thousand people claiming under the Industrial Injuries Disablement Benefit scheme in June 2012, of whom 66% received Industrial Injuries Disablement Benefit only, 17% received Reduced Earnings Allowance only, and 18% received both. The number of people claiming benefit has dropped slightly (by 2%) since June 2011. The average weekly payment was £51.79.

Latest statistical data available from: <http://statistics.dwp.gov.uk/asd/index.php?page=iidb>

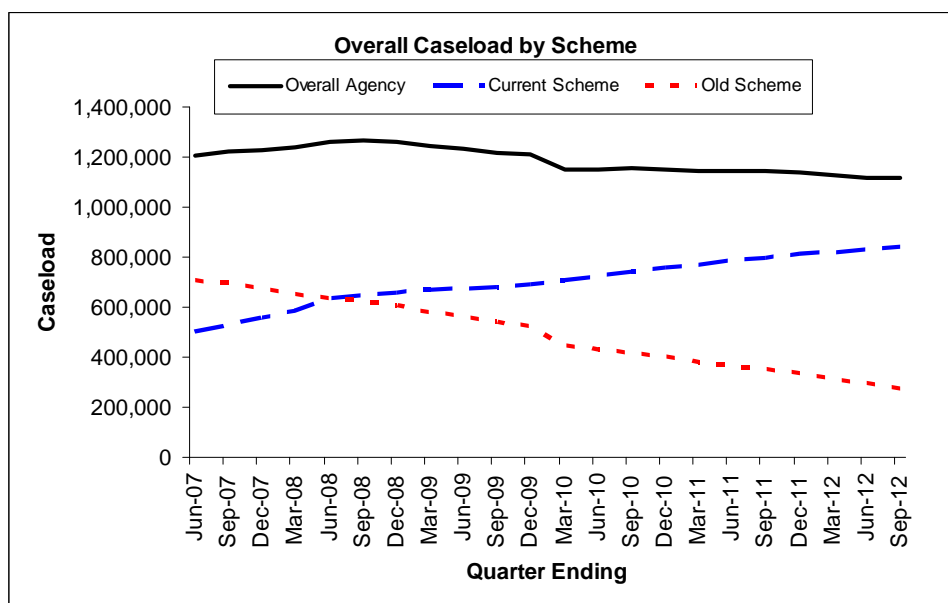
5. Families & Children

5.1 National Statistics: Child Support Agency cases

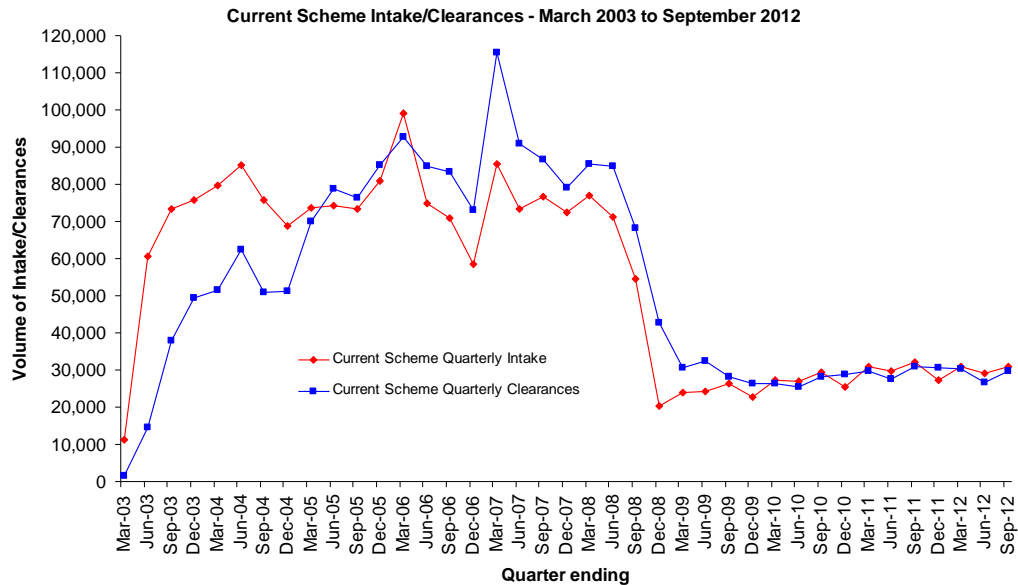
The Department for Work and Pensions (DWP) is responsible for the child maintenance system in Great Britain. It funds information and support for separating parents and runs the statutory child maintenance schemes, currently operated through the Child Support Agency (CSA).

DWP assumed responsibility for the CSA from the Child Maintenance and Enforcement Commission on the 1 August 2012, following an announcement on 14 October 2010 that the Commission would become an executive agency of DWP as part of the Public Bodies Reform. The Commission had responsibility for the CSA between the 1 November 2008 and the 31 July 2012, prior to that DWP had responsibility for the CSA.

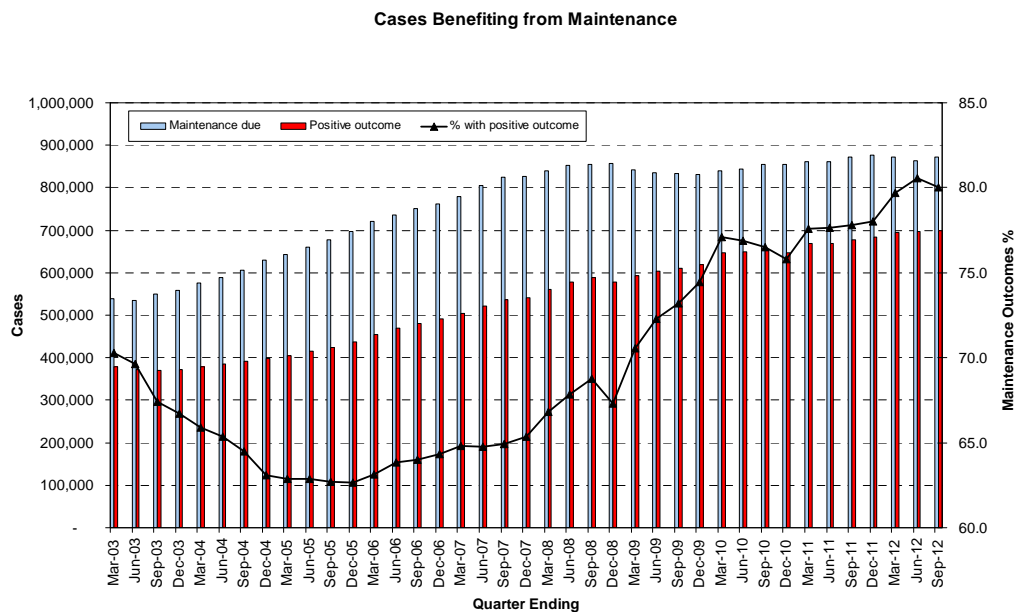
These statistics contain the most up-to-date tables and breakdowns on the CSA's two existing statutory child maintenance schemes. The CSA statistics presented here were released on the 14th November 2012.



At the end of September 2012, the CSA live and assessed caseload stood at 1.11 million.



The volume of uncleared current scheme applications increased by 1,200 since June 2012, and is currently at 17,100. This represents an increase of 7.5% since June 2012.



In the quarter ending September 2012, 80.0% of all cases in which maintenance was due had either received maintenance via the CSA collection service, or had a maintenance direct arrangement in place.

Latest statistical data available from: <http://statistics.dwp.gov.uk/asd/index.php?page=csa>



NOTES

1. The Statistical Summary

The Department for Work and Pensions (DWP) publish a Statistical Summary document each month. It is used for the release of a wide range of DWP statistics

The DWP Statistical Summary brings together key National Statistics on DWP administered benefits and JSA (Jobseeker's Allowance) sanctions. To provide a more complete picture of DWP responsibility, statistics on Housing Benefit and Council Tax Benefit (administered by Local Authorities) and the Child Support Agency are also included.

The Summary is published monthly, containing Official Statistics giving early estimates of inactive benefit caseloads. Each quarter (in May, August, November and February), the Summary is a larger document containing the detail of DWP administered benefits, Housing Benefit and Council Tax Benefit, JSA sanctions and the Child Support Agency.

Alongside the Statistical Summary, there are a large number of tables which enable the user to delve in to the detail. These are provided to the user as:

- The DWP Tabulation Tool – for DWP administered benefits and employment programmes the Tabulation Tool provides the user with an interactive tool to select one of thousands of possible tabulations. This is available for caseloads and on/off flows at: <http://research.dwp.gov.uk/asd/index.php?page=tabtool>. A similar Tabulation Tool, derived from 5% sample data, is also available. Whenever possible, 100% data should be used in preference to 5% estimates, as these are both more accurate and form DWP's headline statistics. Some statistics remain outside the scope of the Tabulation Tool but will continue to be available via the internet as pre-defined summary tables.
- Identical numbers via Nomis (<https://www.nomisweb.co.uk/Default.asp>)
- Stat-Xplore – provides users with an interactive visualisation tool to produce charts, graphs and tables, downloadable in a number of different formats. This tool is an experimental release. Changes and enhancements to the tool will be made in future releases, however the statistics within the tool should be considered robust. The tool contains data on Housing Benefit claimants only at this stage.
- Separate detailed tables on Housing Benefit and Council Tax Benefit; and Claimants on out-of-work benefits (via the Working Age Client Group Tabulation Tool, use first "Useful Resources and Sites" link)
- Tables broken down by Lower Super Output Area (LSOA) and Census Output Area (COA).
- Other tables and background information via links on the Tabulation Tool pages (e.g. links to long time series spreadsheets; descriptions of the benefit.)

The National Statistics paper "DWP statistics transformed: the modernisation of the DWP's data sources and statistical publications" announced major changes to the National Statistics the Department publishes in 2005. Much of this content is still relevant and is available from:

http://statistics.dwp.gov.uk/asd/asd1/stats_consultation/modstats.pdf

On 23 January 2013, DWP opened a consultation on "People and households claiming Universal Credit, Personal Independence Payment and other benefits: Plans for 2013-2017". The outcome of this consultation will shape the content and format of the Statistical Summary through to 2017 and beyond. The full consultation can be found at: http://research.dwp.gov.uk/asd/dwp_stats2013_17.pdf.

2. National Statistics Code of Practice

DWP complies with the Code of Practice for Official Statistics and supporting Principles. Detailed policy statements and statement of compliance with the pre-release access to official statistics order 2008 are given below:

DWP policy statements

Detailed policy and methodology relating to the Statistical Summary can be found at:

- Quality
- Methodology
- Uses and Users
- Ad hocs and pricing



The UK Statistics Authority report on the compliance with the Code of Practice for Official Statistics for the Statistical Summary is report number 66 at:
<http://www.statisticsauthority.gov.uk/assessment/assessment/assessment-reports/index.html>

The United Kingdom Statistics Authority has designated these statistics as National Statistics, in accordance with the Statistics and Registration Service Act 2007 and signifying compliance with the Code of Practice for Official Statistics.

Designation can be broadly interpreted to mean that the statistics:

- meet identified user needs;
- are well explained and readily accessible;
- are produced according to sound methods, and
- are managed impartially and objectively in the public interest.

Once statistics have been designated as National Statistics it is a statutory requirement that the Code of Practice shall continue to be observed.

DWP would like to hear your views on our statistical publications. If you use any of our statistics publications, we would be interested in hearing what you use them for and how well they meet your requirements. Please email DWP at stats-consultation@dwp.gsi.gov.uk.

An ongoing questionnaire, enabling DWP to target future consultations at interested users; shaping the future direction of statistics development to address user needs; and helping ensure value for money, whilst giving users a structured way of expressing their views is available at:
http://research.dwp.gov.uk/asd/statistical_summary_questionnaire.doc

Completed questionnaires can be returned by e-mail to stats-consultation@dwp.gsi.gov.uk or by post to the following address:

Stuart Grant
Information, Governance and Security Directorate
Department for Work and Pensions
Room BP5201
Benton Park Road
Longbenton
NEWCASTLE UPON TYNE
NE98 1YX

Users can also join the "Welfare and Benefit Statistics" community at: <http://www.statsusernet.org.uk>.

3. Statistical groups

DWP has a typology to define Statistical Groups within the client group classifications. The aim of the Statistical Group typology is to present each person by the main reasons they are in contact with the Department. Like the client group classification, each client is classified just once, permitting the estimation of the total number of people claiming one or more benefits. The Statistical Group hierarchy is:

a] Jobseeker	e] Other income-related benefits
b] Employment and Support Allowance and incapacity benefits	f] Disabled
c] Lone parents	g] Bereaved
d] Carers	h] Housing Benefit
	i] State Pension only recipients

From November 2008 the "incapacity benefits statistical group" includes Employment and Support Allowance (ESA). ESA replaced Incapacity Benefit and Income Support paid on the grounds of incapacity for new claims from 27th October 2008. Prior to this the "incapacity benefits group" covered people on Incapacity Benefit or Severe Disablement Allowance, including people claiming Income Support on the grounds of incapacity.



4. Jobseeker's Allowance figures at ONS

The preferred source of numbers for Jobseeker's Allowance is the ONS claimant count figure; these are more up to date and contain clerical cases. However, the reason we use the DWP JSA figures is that they are consistent with the other benefits used to produce DWP National Statistics, and permit a wider set of breakdowns. The ONS figures are available from Nomis and <http://www.statistics.gov.uk/>.

5. Flows on and off benefit

The flows Tabulation Tools show a full back series for on-flow and off-flow. Pension Credit information is available via a one-click table: http://83.244.183.180/100pc/pc/tabtool_pc.html. User guidance on the flows series can be found at: http://83.244.183.180/flows/flows_on/Guidance%20for%20Users.pdf

6. Early Estimates

The DWP benefit National Statistics have a gap of around five and a half months between the publication and reference dates.

The early estimates are official statistics (see: <http://www.statisticsauthority.gov.uk/national-statistician/types-of-official-statistics>) and published monthly to give indicative, timely information ahead of the publication of full National Statistics. The Office for National Statistics publish the Jobseeker's Allowance claimant count every month, one month in arrears. Consequently, the Early Estimates focus on the economically inactive groups of "incapacity benefits and Employment and Support Allowance" and "Income Support lone parents".

The main reason for the lag in the National Statistics release is because we have to wait three months for a small but significant number of late claims to be processed. Waiting for these late claims makes the National Statistics figures more accurate than the early estimates where we simply predict the number of late claims based on historical levels.

The early estimates are not a substitute for the National Statistics and will be replaced when the final quarterly National Statistics covering the same period are published. However, the estimates are fairly close to the final National Statistics figures. To give an indication of their accuracy, over the past year the early estimates for ESA/IB have been revised by an average of 0.5%, with the biggest revision being 0.68% and the smallest being 0.27%. The early estimates for ISLP have been revised by an average of 0.4%, with the biggest revision being 1.08% and the smallest being 0.04%.

During the re-assessment of Incapacity Benefit claimants for Employment and Support Allowance, users should be aware that there may also be increased uncertainty around these early estimates. As level of late claims is estimated using historical data, any change in the structure of the flows on and off benefit can affect the accuracy of the methodology. DWP plan to review the methodology each month to ensure that the estimates are as good as possible.

More detailed information can be accessed via the following links:

http://statistics.dwp.gov.uk/asd/asd1/early_ests/technical_document_final.pdf

http://statistics.dwp.gov.uk/asd/asd1/early_ests/QandA_Early_Estimates_final.pdf

7. Welfare Reform

The Lone Parent Obligation policy came into effect from 24 November 2008; Lone Parents (LPs) with a youngest child aged 12 or over were no longer able to make a new or repeat claim for Income Support (IS) solely on the basis of their parental status. Existing IS LPs with a youngest child aged 12 or over had their eligibility removed over a period of time commencing 2nd March 2009. From October 2009 this policy was extended to LPs with a youngest child aged 10 or 11 and from October 2010 the policy was extended to LPs with a youngest child aged 7 or over. The Welfare Reform Act 2012 introduced further changes and from 21 May 2012 lone parents have been eligible to claim Income Support until their youngest child is five years old.

Most effected LPs will leave IS and claim Jobseeker's Allowance (JSA). However, there are exceptions to these rules where the youngest child can legitimately be over the ages mentioned above. Similarly, some former LPs remain on IS for other reasons (e.g. they have a long term caring responsibility and claim Carer's Allowance). The IS LP series will continue to be defined as 'single IS claimants with a child under 16'.



Referrals to the new employment programme “Work Programme” began from June 2011 (<https://www.gov.uk/moving-from-benefits-to-work/job-search-programmes>). In the run up to that launch, a new package of Get Britain Working support measures were introduced. In tandem with these changes, referrals to legacy employment programmes ceased. Final statistics for these programmes have now been released. The existing Tabulation Tools will remain available for historical analysis. For statistics relating to these new programmes see:

<http://research.dwp.gov.uk/asd/asd1/pwp/index.php?page=pwp> and
<http://research.dwp.gov.uk/asd/index.php?page=wp>

The age at which women reach State Pension age is gradually increasing from 60 to 65 between April 2010 and April 2016 to November 2018. Under current legislation, State Pension age for men and women is planned to increase to: 66 between November 2018 and October 2020; 67 between 2034 and 2036; 68 between 2044 and 2046. The first quarterly statistical summary to be affected was the November 2010 publication and the first early estimates to be affected were released in June 2010. These changes introduce a small increase to the number of working age benefit recipients and a small reduction to the number of pension age recipients. There are also changes to the way we report benefit recipients as a proportion of the working population. More information can be found at: <http://statistics.dwp.gov.uk/asd/espa.pdf>. For general information about the change to State Pension age, please see:
<https://www.gov.uk/browse/working/state-pension>.

8. Known Issues, Changes and Revisions to the Statistical Summary

On 20th February 2013:

- During the quality assurance of the August 2012 National Statistics on State Benefits an issue was discovered with the allocation of benefit claimants to geographical areas. As geographical breakdowns are commonly requested by many users, the release of the statistics has been postponed whilst the issue is resolved. The August 2012 statistics will now be published on 20th March.
- The issue surrounding the “Attendance Allowance - cases in payment” (http://83.244.183.180/100pc/aa/tabtool_aa.html) Tabulation Tool has been resolved and a full time series of information is now available.
- This Summary contains a new detailed table showing a time series of payment status by benefit for the “ESA and incapacity benefits” statistical group.
- Universal Jobmatch launched on 19 November 2012. This is DWP’s new, free online job posting and matching service. Details of the new statistical service are available via http://statistics.dwp.gov.uk/asd/asd1/jsa/vacancies/index.php?page=jsa_vacancy

9. Notification of future changes to the Summary

In August 2012, DWP announced that the frequency of the publication of the Statistical Summary would temporarily change to allow DWP to focus on preparation of a new, improved dissemination tool and the development of new series for the Personal Independence Payment and Universal Credit. Following the delayed release of August 2012 statistics on 20th March 2013, the frequencies for all publications, excluding Housing Benefit/Council Tax Benefit, will revert to the original schedule. The publication frequencies are listed below:

- The early estimate series will continue to be published monthly, using the existing timetable.
- The series detailing DWP administered benefits will be published on a quarterly schedule, with the next release occurring in May 2013.
- Small area (ward, Lower Super Output Area and Census Output Area) statistics will move to a quarterly schedule in line with the Tabulation Tool releases.
- The Housing Benefit/ Council Tax Benefit series will be published on a quarterly basis, showing monthly figures. Each quarterly release will contain three sets of the standard tables, one for each relevant month.
- Series which are released independently in other publications will continue to be published as normal. The following series will continue using the normal publication frequency: Jobcentre Plus vacancies (although, see the Focus On... article in the August 2012 Summary), Industrial Injuries Disablement Benefit and Child Support Agency.

- Council Tax Benefit will be abolished in April 2013 and replaced by a system of localised support. In England, the Department for Communities and Local Government (DCLG) will be responsible for statistics. The Scottish and Welsh Governments will have similar responsibility. The Summary will report the last set of Council Tax Benefit statistics in May 2013, ending with the February 2013 numbers (for technical reasons, March 2013 numbers are not possible). The Housing Benefit series will continue.

Current consultations

Universal Jobmatch launched on 19 November 2012. This is DWP's new, free online job posting and matching service. Universal Jobmatch replaces the current vacancy management services, Employer Direct and Employer Direct Online for companies, and it replaces the Jobcentre Plus jobs and skills search facility for jobseekers.

As a result, there have been fundamental changes in the associated statistical series. User comments have been received as part of a consultation, which can be found on page 4 of:

http://statistics.dwp.gov.uk/asd/asd1/stats_summary/stats_summary_aug12.pdf. The consultation is now closed. Results are available at: http://statistics.dwp.gov.uk/asd/asd1/jsa/vacancies/user_views.pdf.

On 22nd October 2012, the new legislation for **JSA Sanctions** came into force. This meant a change to the current 26 reasons why a JSA claimant can be sanctioned to a new three tier sanctions regime which seeks to broadly align the JSA sanctions regimes with the model to be introduced under Universal Credit. DWP launched a consultation regarding the future of JSA sanctions statistics. This consultation can be found at: http://statistics.dwp.gov.uk/asd/asd1/jsa/jsa_sanctions_consultation.pdf. This consultation is now closed.

Results will be issued in due course.

On 23 January 2013, DWP opened a consultation on **People and households claiming Universal Credit, Personal Independence Payment and other benefits: Plans for 2013-2017**. The outcome of this consultation will shape the content and format of the Statistical Summary through to 2017 and beyond. This consultation can be found at: http://research.dwp.gov.uk/asd/dwp_stats2013_17.pdf. The consultation is open until 24 April 2013.

10. Northern Ireland Statistics

The statistics in this Summary cover Great Britain (England, Scotland and Wales) only. Comparable benefit statistics for Northern Ireland can be found at:

http://www.dsdni.gov.uk/index/stats_and_research/benefit_publications.htm

and

http://www.dsdni.gov.uk/index/stats_and_research/geographical_data_on_ss_benefits.htm for geographical breakdowns

Currently, the Northern Ireland statistics use extracts from the benefit systems very similar to those used to create the 5% sample numbers for Great Britain (although the Northern Ireland sample size is usually greater than 5%). The directly equivalent GB numbers can be found at: <http://83.244.183.180/5pc/tabtool.html>. However, Northern Ireland statistics are shortly due to move to extracts from the benefit systems very similar to those used to create the WPLS/100% sample numbers (<http://83.244.183.180/100pc/tabtool.html>) for Great Britain. However, Northern Ireland statistics will ignore the effect of retrospection.

Comparisons between the Great Britain 5% samples and 100% samples, plus the effect of retrospection can be seen in documents entitled "Differences between WPLS and 5% sample data" in the "Useful Resources and Sites" section of each single benefit 100% sample Tabtool (e.g. http://83.244.183.180/100pc/is/tabtool_is.html)

Housing Benefit is a social security benefit paid by the Housing Executive. It helps people on a low income pay their rent and rates. In Northern Ireland, rates are paid instead of Council Tax. Limited Housing Benefit numbers are available in the summary bulletin at:

http://www.dsdni.gov.uk/index/publications/summary_statistics_bulletin.htm. For people who own their own property and need help with rates only, Land and Property Services (LPS) provide rates relief payments. Statistics on those receiving rates relief only are not available.

Employment Programmes are different in Northern Ireland. Hence, statistics are not directly comparable. However, numbers on the various schemes are available from:

<http://www.delni.gov.uk/index/statsandresearch/training-and-employment-stats.htm>.



Vacancy statistics for Northern Ireland are available at <http://www.detini.gov.uk/deti-stats-index/stats-surveys/stats-vacancy-stats.htm> and at <http://www.delni.gov.uk/index/statsandresearch/labour-market-information-stats/vacancies.htm>. Statistics on Jobcentre Plus Sanctions and Child Maintenance are not currently published for Northern Ireland.

11. Her Majesty's Courts and Tribunals Service

Her Majesty's Courts and Tribunals Service was created on 1 April 2011. It brings together Her Majesty's Courts Service and the Tribunals Service into one integrated agency providing support for the administration of justice in courts and tribunals.

Responsibility for publishing statistics on the appeals now resides with Her Majesty's Courts and Tribunals Service and they publish statistical information via their website <http://www.justice.gov.uk/about/hmcts>

12. Fraud and Error statistics

National Statistics are published presenting six-monthly estimates of fraud and error in claims for Income Support, Jobseeker's Allowance, Pension Credit and Housing Benefit, along with an annual estimate of the level of fraud and error in the benefit system as a whole. One-off benefit reviews have been carried out from time to time to estimate fraud and error in claims for other benefits. Reports can be found at http://research.dwp.gov.uk/asd/asd2/index.php?page=fraud_error

13. Take-Up of Income-Related Benefits

Publications contain information on the take-up of the main income-related benefits in Great Britain: Income Support, Pension Credit, Housing Benefit, Council Tax Benefit, Employment and Support Allowance (income related) and Jobseeker's Allowance (income based). Take-up is measured in two ways. Expenditure take-up compares the total amount of benefit received in the course of a year with the total amount that would have been received if everyone took up their entitlement for the full period of entitlement. Caseload take-up compares the number of benefit claimants – averaged over the year – with the number who would be receiving if everyone took up their entitlement for the full period of entitlement. Data is sourced from the Family Resources Survey and administrative benefit records. Latest published figures are available at: <http://statistics.dwp.gov.uk/asd/index.php?page=irb>

14. Other National and Official Statistics issued by the Department for Work and Pensions

Details of other National and Official Statistics produced by the Department for Work and Pensions can be found on the DWP website at the following links:

- A list of Tabulation Tools: <http://statistics.dwp.gov.uk/asd/index.php?page=tabtool>;
- An A to Z list of DWP statistics: http://statistics.dwp.gov.uk/asd/index.php?page=statistics_a_to_z;
- A schedule of statistical releases over the next 12 months: <http://statistics.dwp.gov.uk/asd/index.php?page=schedule>;
- And a list of the most recent releases: <http://statistics.dwp.gov.uk/asd/index.php?page=recent>.
- In accordance with the Code of Practice for Official Statistics, all DWP National Statistics are also announced via the UK Statistics Authority publication hub at: http://www.statistics.gov.uk/hub/statistics-producers/publications/index.html?newquery=*%&source-agency=Work+and+Pensions&pagetype=release-landing-page. In addition, users can find links to DWP additional statistical analyses that have not been included in our standard publications at http://statistics.dwp.gov.uk/asd/index.php?page=adhoc_analysis.