

EC Type Examination Certificate Number: **UK/ 0120/ SGS0002**

GE Energy

130 Main Street
Somersworth
NH 03878
USA

Instrument Identification:

Intellix SM110 - 828X****

Single Phase, Credit, Active Import/Export, Electricity Meter

Instrument Traceable Number

UK/ 0120/ SGS0002

has been assessed and certified as meeting the requirements of

EC Directive 2004/22/EC **on Measuring Instruments Annex B**

It is certified that the manufacturer's technical design and specimen for the above instrument has been examined and, based on the evidence submitted, it is considered that the instrument conforms to the requirements of MI-003 of EC Directive 2004/22/EC.

This certificate is issued in conjunction with a certificate covering the product verification as required in Annex D or Annex F.

This certificate is valid from 10th August 2007 until 9th August 2017
Issue 7

Certification is based on report number(s)

EMA107439 dated 10th August 2007

EMA113282 dated 14th November 2007

EMA115350 dated 18th February 2008

Notified Body Number 0120

Authorised Signature



Notified Body

SGS United Kingdom Ltd, 202B Worle Parkway, Weston-super-Mare, BS22 6WA UK

t +44 (0)1934 522917 f +44 (0)1934 522137 www.sgs.com

Contact Address

SGS United Kingdom Ltd, Unit 10, South Industrial Estate, Bowburn, Durham, DH6 5AD UK

t +44 (0)191 377 2000 f +44 (0)191 377 2020 www.sgs.com

EC Type Examination Cert.

Page 1 of 5

MID-B06E Rev 2



UK/ 0120/ SGS0002

Issue 7

30 April 2009

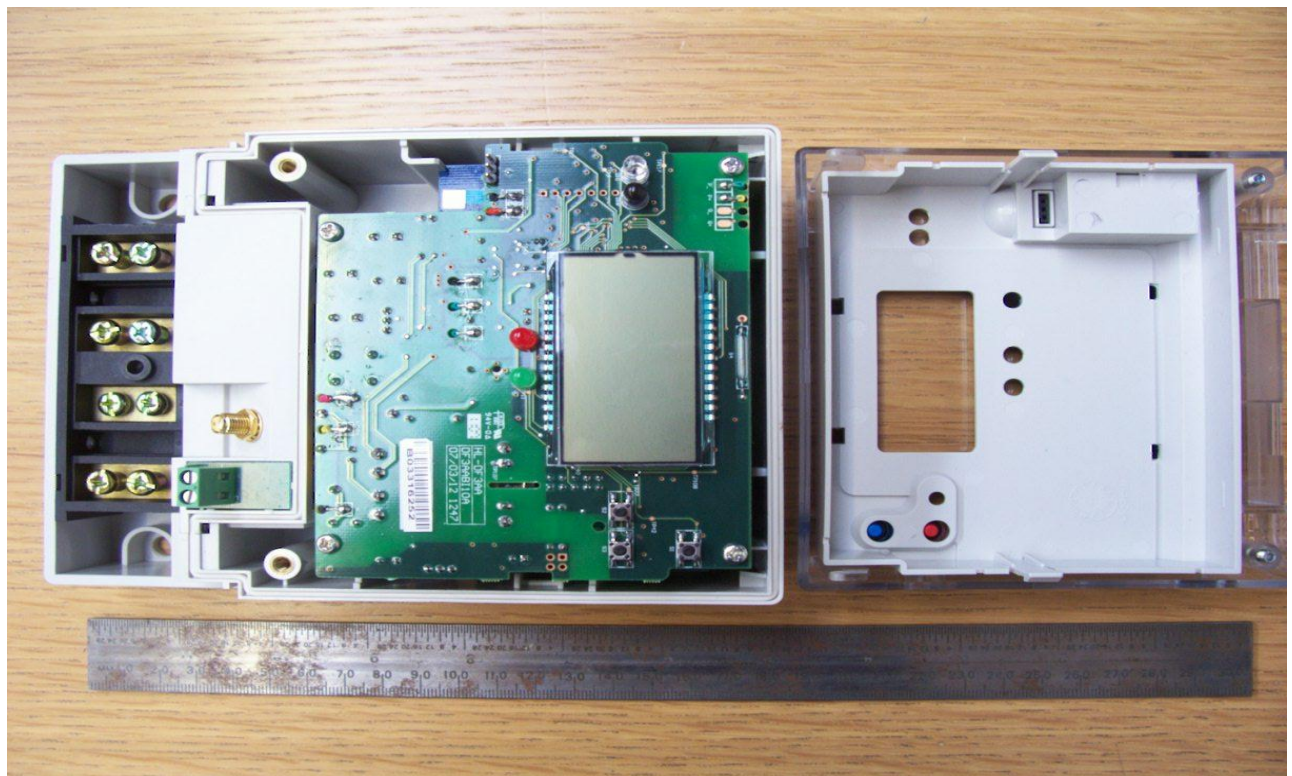
Approval Annex for EC Type Examination Certificate No. UK/ 0120/ SGS0002

Manufacturer : GE Energy	
Type of Meter(s) : Intellix SM110 - 828X****	
Description of Meter : Single Phase, Credit, Active Import/Export, Electricity Meter	
Accuracy Class (es) : A or B (kWh)	Software Version No: 1.0 from 10/08/07 to 17/02/08 1.1 from 18/02/08 onwards Location: Nameplate
Firmware Version No: 1.0 from 10/08/07 to 17/02/08 1.1 from 18/02/08 onwards Location: Nameplate	Bill Of Materials No : DF3AC & J-DF02 or : DF3AD & J-DF01
Location: Outdoor	Sealing Type: Wire & Crimp and/or Lead Insert Location: 2 x Front of Meter
Integrity of Meter: Inaccessible without breaking seals	Temperature Range: -40°C to 70°C
Type of Circuit : 1p2w	Frequency: 50Hz
Current Range: 1-20(100)A	Voltage Range: 220-240V

BS Terminal External View 1



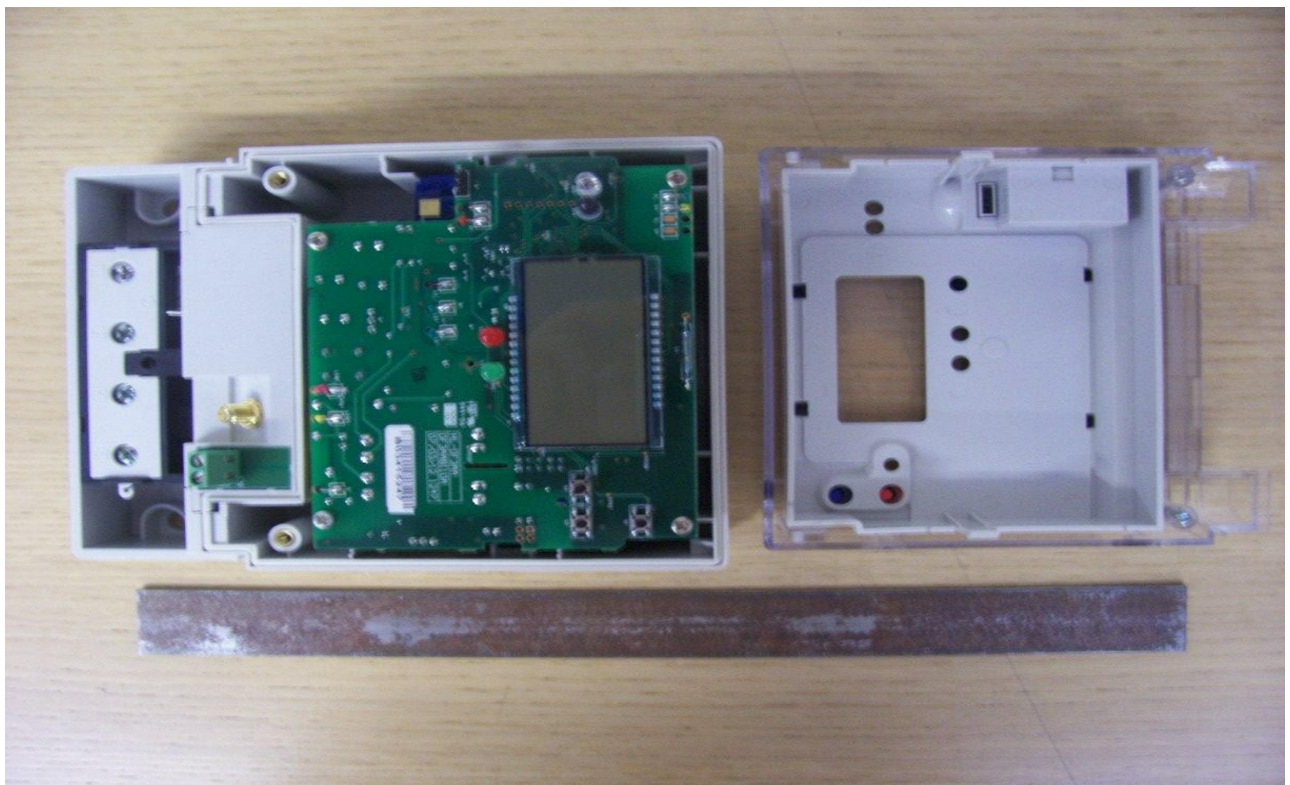
BS Terminal Internal View 2



DIN External View 3



DIN Internal View 4



Product Variant Identification Details:

Type Designation	Description of meter
828X	<p>Model Intellix SM110</p>
	<p>Base/ Terminal Cover/ Battery or Super cap</p>
	<p>1 DIN Configuration, Steel Caged Clamp Terminals (Single Screw), Long Terminal cover, Battery 2 DIN Configuration, Steel Caged Clamp Terminals (Single Screw), Long Terminal cover, Supercap 3 DIN Configuration, Steel Caged Clamp Terminals (Single Screw), Short Terminal cover, Battery 4 DIN Configuration, Steel Caged Clamp Terminals (Single Screw), Short Terminal cover, Supercap 5 BS Configuration, Steel Caged Clamp Terminals (Single Screw), Long Terminal Cover, Battery 6 BS Configuration, Steel Caged Clamp Terminals (Single Screw), Long Terminal Cover, Supercap 7 BS Configuration, Steel Caged Clamp Terminals (Single Screw), Short Terminal Cover, Battery 8 BS Configuration, Steel Caged Clamp Terminals (Single Screw), Short Terminal Cover, Supercap 9 BS Type, Brass Terminals (Two Brass Screws), Short Terminal Cover, Battery</p>
	<p>Maximum Current</p>
	<p>5 100Amps</p>
	<p>Disconnect/ No. of Elements/ Output Relay</p>
	<p>1 No Disconnect, 1 Element, No Output Relay 2 No Disconnect, 1 Element, 1 Output Relay 3 No Disconnect, 2 Elements, No Output Relay 4 No Disconnect, 2 Elements, 1 Output Relay 5 Disconnect, 1 Element, No Output Relay 6 Disconnect, 1 Element, 1 Output Relay 7 Disconnect, 2 Elements, No Output Relay 8 Disconnect, 2 Elements, 1 Output Relay</p>
	<p>Communications</p>
	<p>0 None 1 RS232 2 RS485 3 Nuri Module 1 4 Nuri Module 2 5 Nuri Module 3, NAMR-P109SR (V2.3)</p>

Modifications to the meter(s) described according to approval No. **UK/ 0120/ SGS0002** must be notified to the issuing body to confirm the meter(s) continuing compliance to the relevant pattern approval standard(s).