

Figure 1. Operational Catchments within the Tyne Catchment.

Failing Element 2012	Fish	Invertebrates	Phytobenthos	Macrophytes	Flow	Mitigation Measures Ass.	Expt. Judgement	Ph	Ammonia	Phosphate	Zinc	Copper	Tributyltin
Op. Catchment													
Allen	4										4		
Derwent	1		1		1	2				1	2		1
Lower North Tyne						4						1	
Lower South Tyne	2										1		
Lower Tyne and Estuary	1	3	3	1	1	3	2		2	4			1
Rede								1					
Tyne	5	1	3				1			1			
Upper North Tyne	10					1		3			1	5	
Upper South Tyne	4	2				1					2		

Table 1. Summary of WFD Failing elements within the Tyne Op. catchments. 2012 Assessment. (Mitigation Measures Ass. refers to 'heavily modified' Water Bodies requiring a programme of physical works to improve their status.)

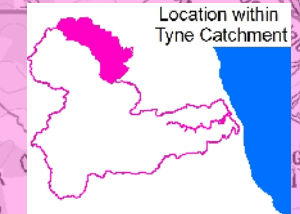
"Rede" Operational Catchment: Reasons For Failure

River Status 2012

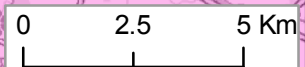
- Good
- Moderate
- Poor

- Water Body Boundary
- Op. Catchment Boundary

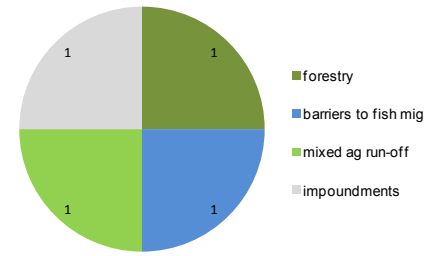
- Water Body Name
REASON FOR FAILURE
 (C) - Confirmed
 (S) - Suspected
 (P) - Probable



Blakehope Burn
BARRIERS TO FISH MIG (C)
FORESTRY (P)

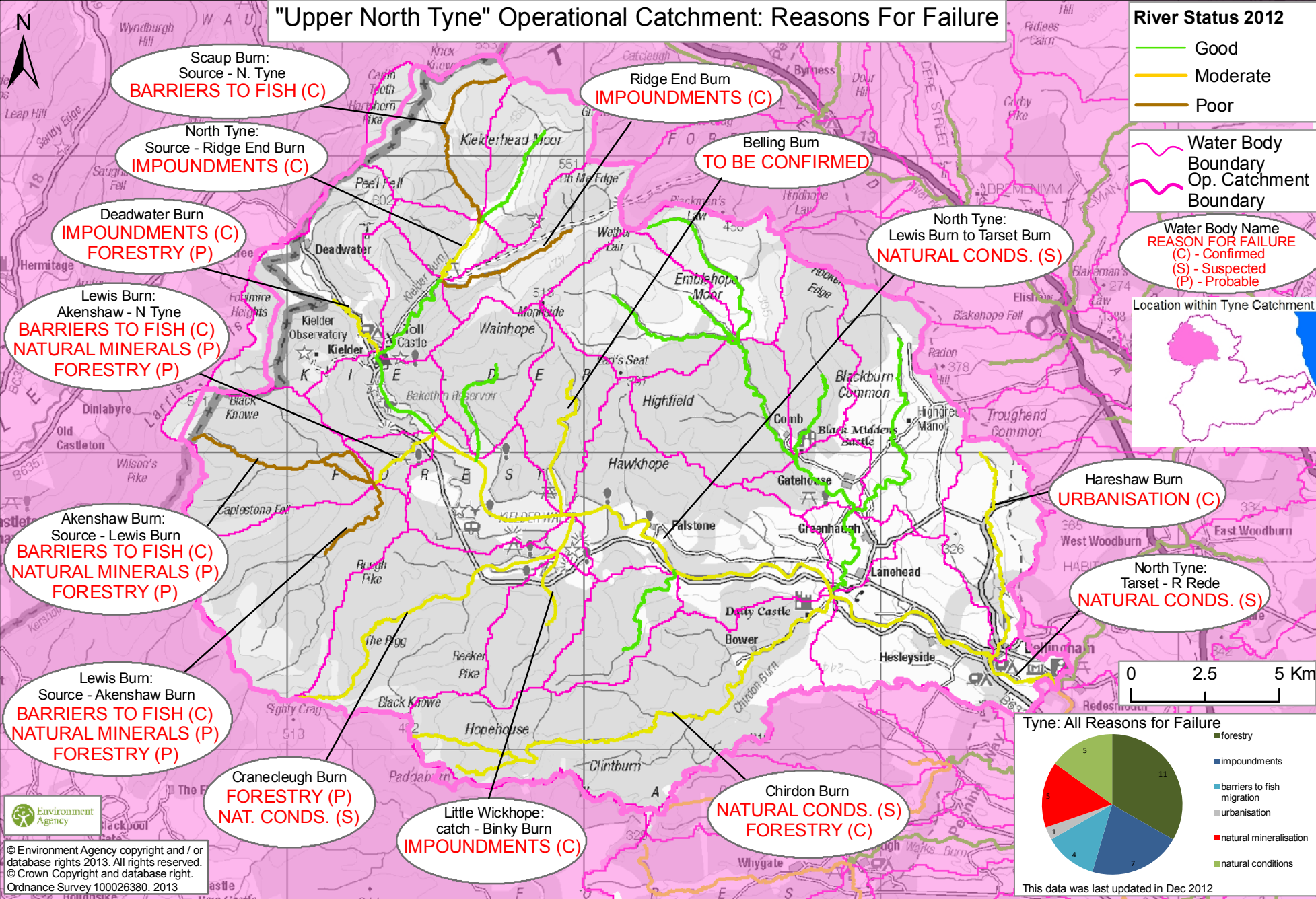


Rede: All Reasons for Failure



This data was last updated in Dec 2012

"Upper North Tyne" Operational Catchment: Reasons For Failure



Scaup Burn:
Source - N. Tyne
BARRIERS TO FISH (C)

North Tyne:
Source - Ridge End Burn
IMPOUNDMENTS (C)

Ridge End Burn
IMPOUNDMENTS (C)

Belling Burn
TO BE CONFIRMED

North Tyne:
Lewis Burn to Tasset Burn
NATURAL CONDS. (S)

Deadwater Burn
IMPOUNDMENTS (C)
FORESTRY (P)

Lewis Burn:
Akenshaw - N Tyne
BARRIERS TO FISH (C)
NATURAL MINERALS (P)
FORESTRY (P)

Akenshaw Burn:
Source - Lewis Burn
BARRIERS TO FISH (C)
NATURAL MINERALS (P)
FORESTRY (P)

Lewis Burn:
Source - Akenshaw Burn
BARRIERS TO FISH (C)
NATURAL MINERALS (P)
FORESTRY (P)

Craneclough Burn
FORESTRY (P)
NAT. CONDS. (S)

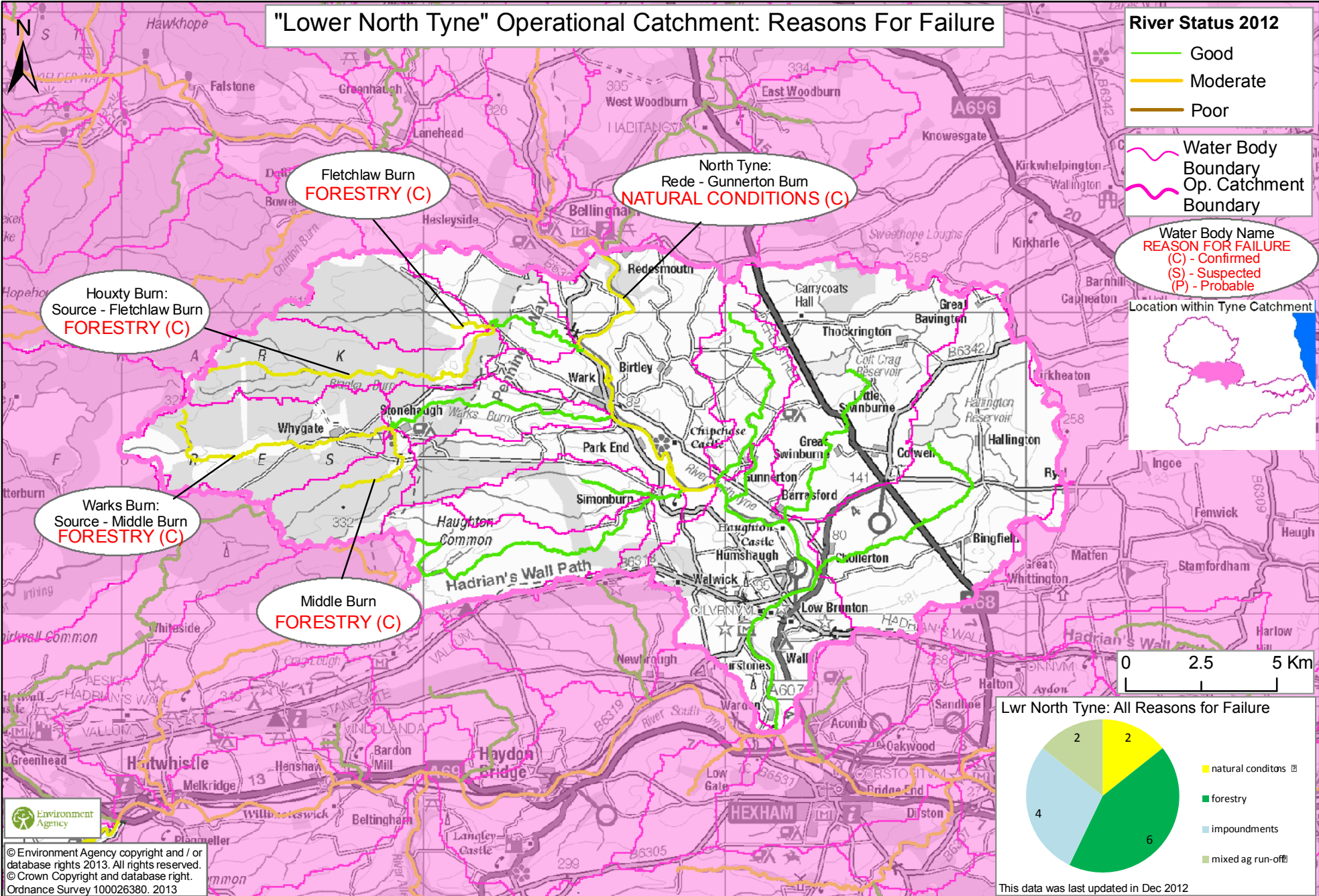
Little Wickhope:
catch - Binky Burn
IMPOUNDMENTS (C)

Chirdon Burn
NATURAL CONDS. (S)
FORESTRY (C)

Hareshaw Burn
URBANISATION (C)

North Tyne:
Tasset - R Rede
NATURAL CONDS. (S)

"Lower North Tyne" Operational Catchment: Reasons For Failure

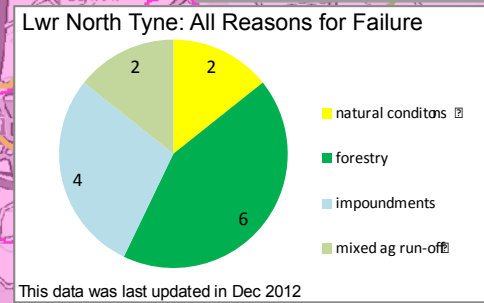
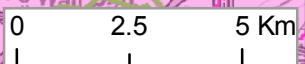
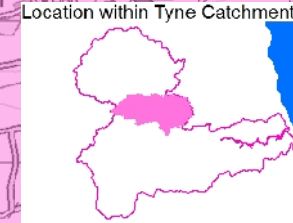


River Status 2012

- Good
- Moderate
- Poor

Water Body Boundary
— Boundary
— Op. Catchment Boundary

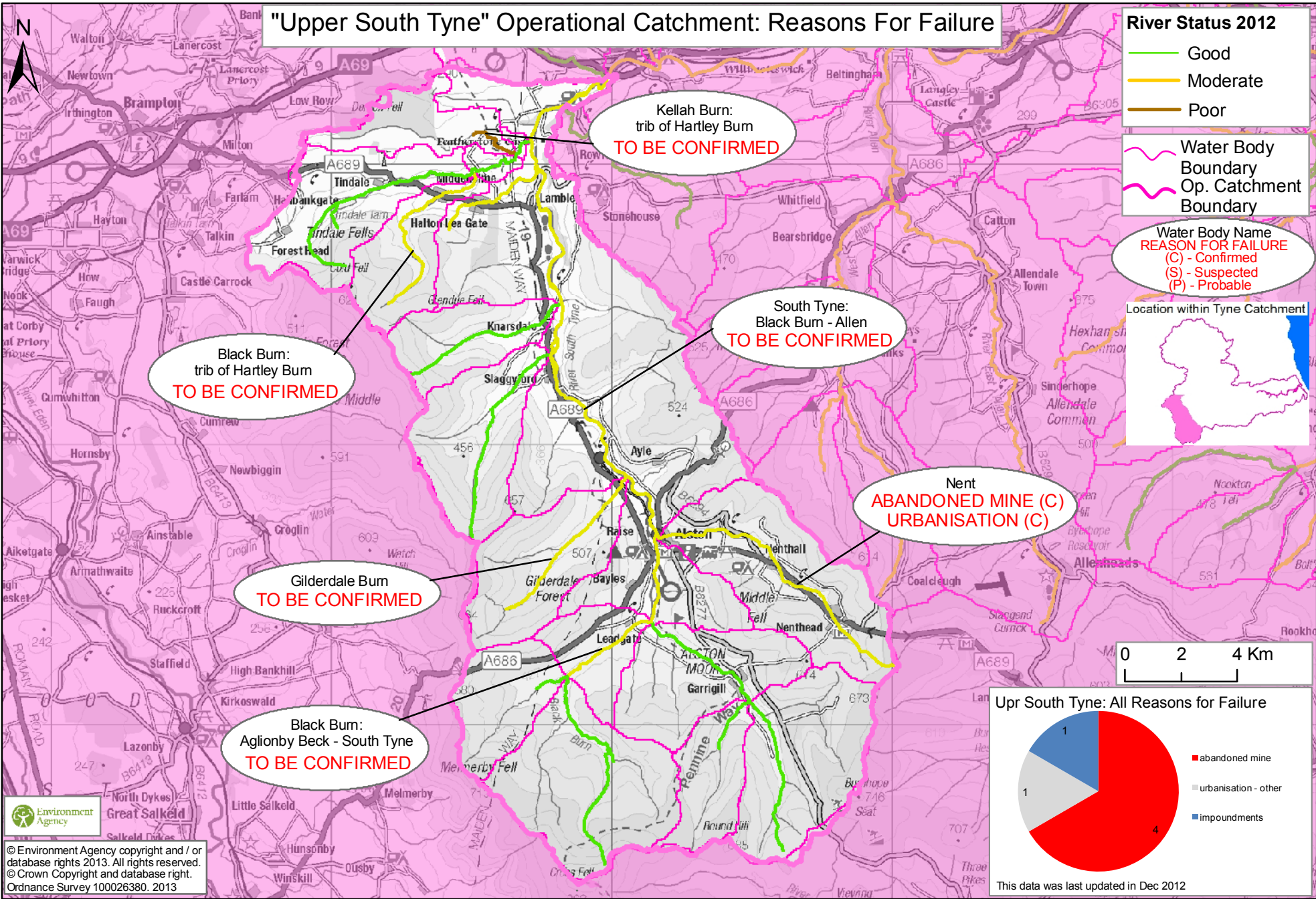
Water Body Name
REASON FOR FAILURE
 (C) - Confirmed
 (S) - Suspected
 (P) - Probable



Environment Agency
 © Environment Agency copyright and / or database rights 2013. All rights reserved.
 © Crown Copyright and database right.
 Ordnance Survey 100026380. 2013

This data was last updated in Dec 2012

"Upper South Tyne" Operational Catchment: Reasons For Failure

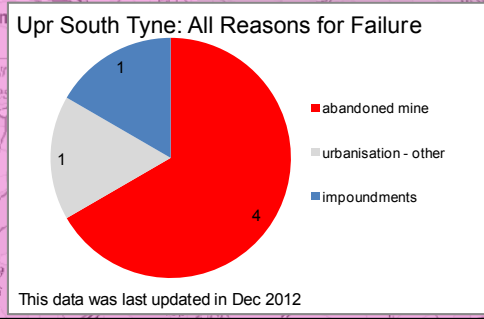
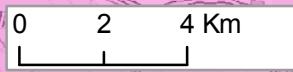
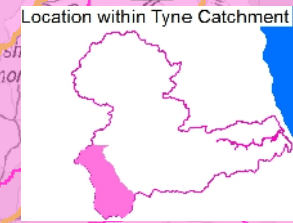


River Status 2012

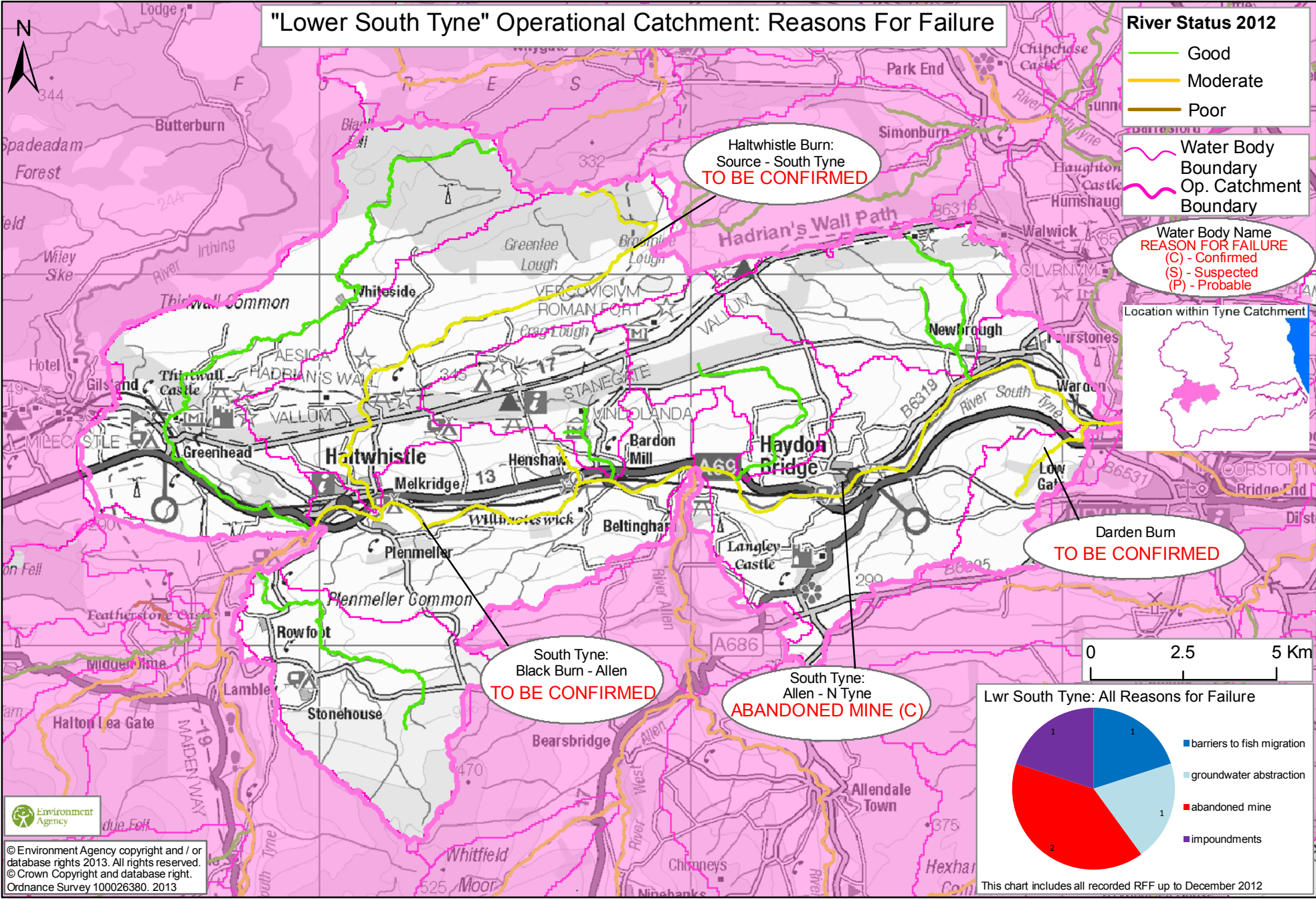
- Good
- Moderate
- Poor

Water Body Boundary
Op. Catchment Boundary

Water Body Name
REASON FOR FAILURE
 (C) - Confirmed
 (S) - Suspected
 (P) - Probable



"Lower South Tyne" Operational Catchment: Reasons For Failure

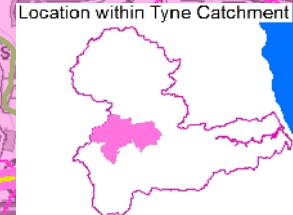


River Status 2012

- Good
- Moderate
- Poor

Water Body Boundary
— Water Body Boundary
— Op. Catchment Boundary

Water Body Name
REASON FOR FAILURE
 (C) - Confirmed
 (S) - Suspected
 (P) - Probable

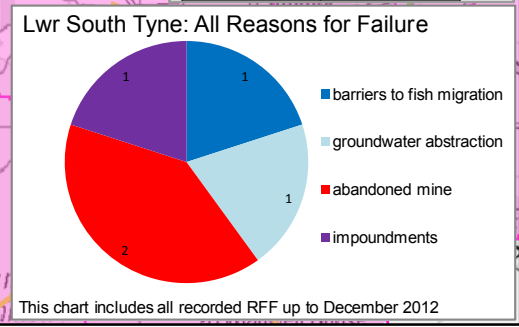
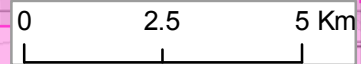


Haltwhistle Burn:
 Source - South Tyne
TO BE CONFIRMED

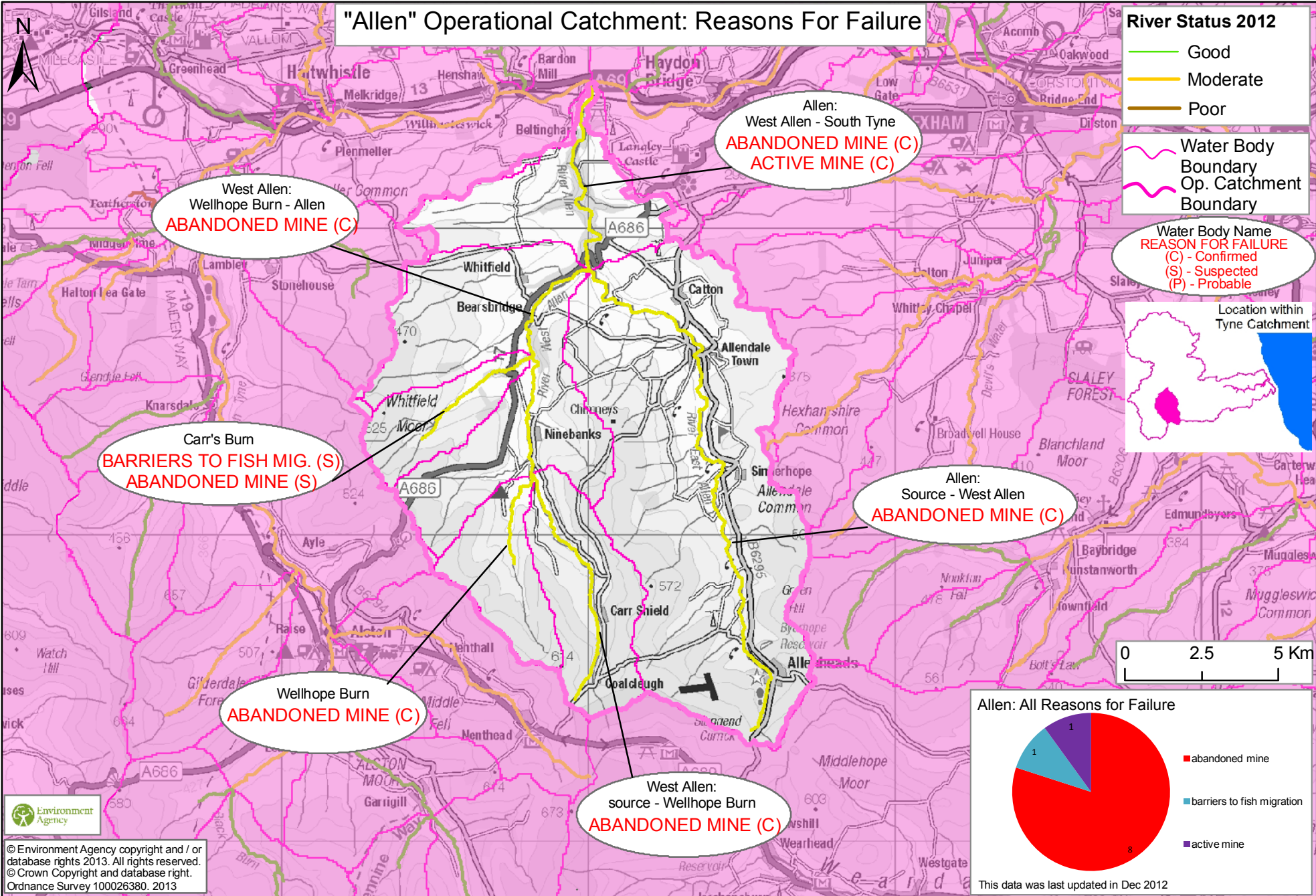
Darden Burn
TO BE CONFIRMED

South Tyne:
 Black Burn - Allen
TO BE CONFIRMED

South Tyne:
 Allen - N Tyne
ABANDONED MINE (C)



"Allen" Operational Catchment: Reasons For Failure



Environment Agency
 © Environment Agency copyright and / or database rights 2013. All rights reserved.
 © Crown Copyright and database right.
 Ordnance Survey 100026380. 2013

"Derwent" Operational Catchment: Reasons For Failure

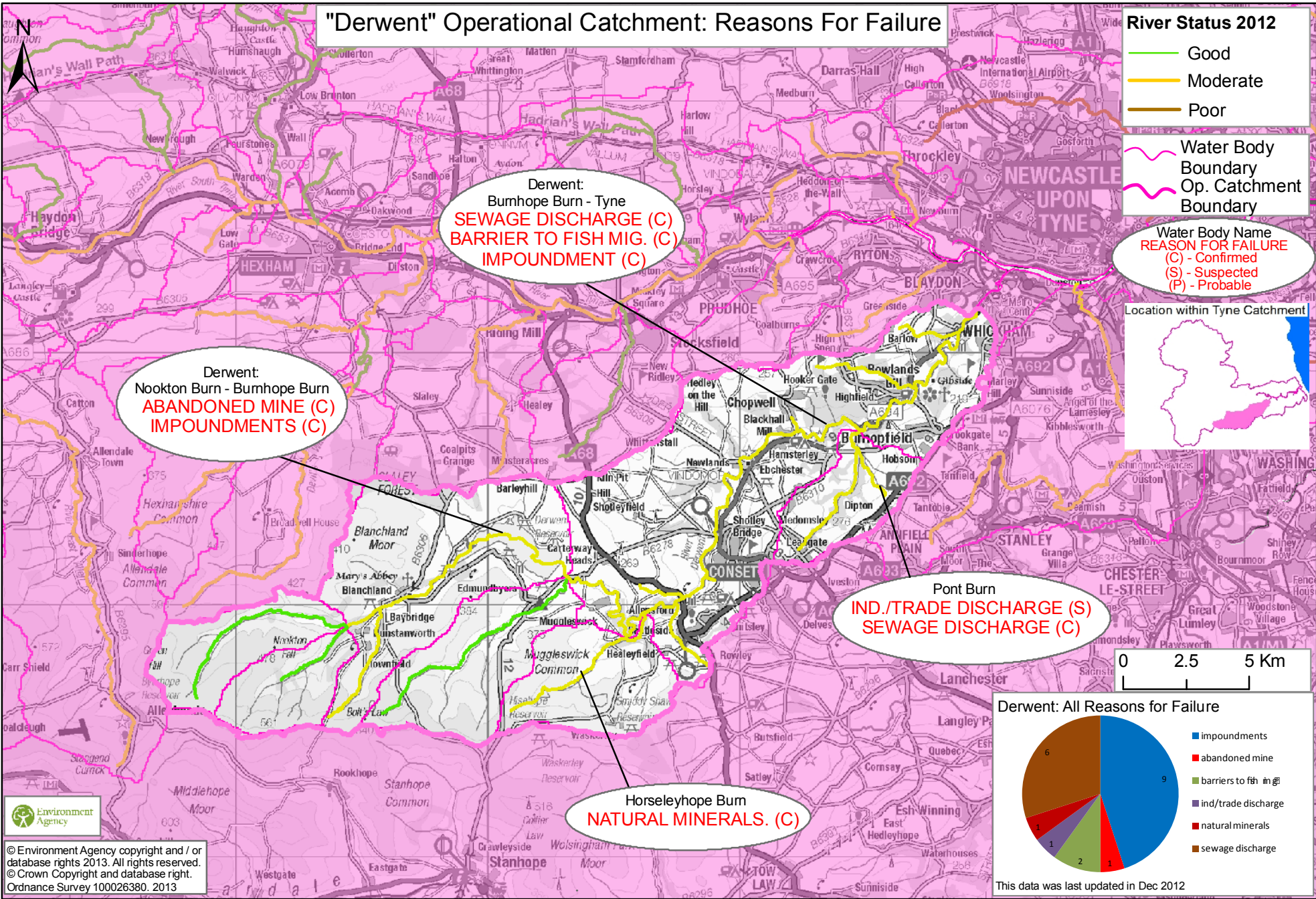
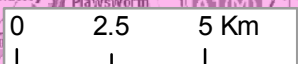
River Status 2012

- Good
- Moderate
- Poor

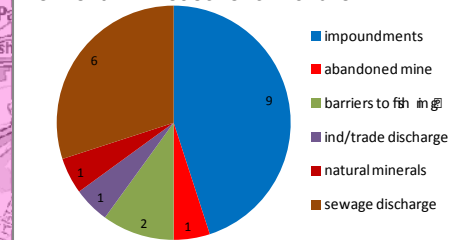
- Water Body Boundary
- Op. Catchment Boundary

- Water Body Name
REASON FOR FAILURE
- (C) - Confirmed
 - (S) - Suspected
 - (P) - Probable

Location within Tyne Catchment

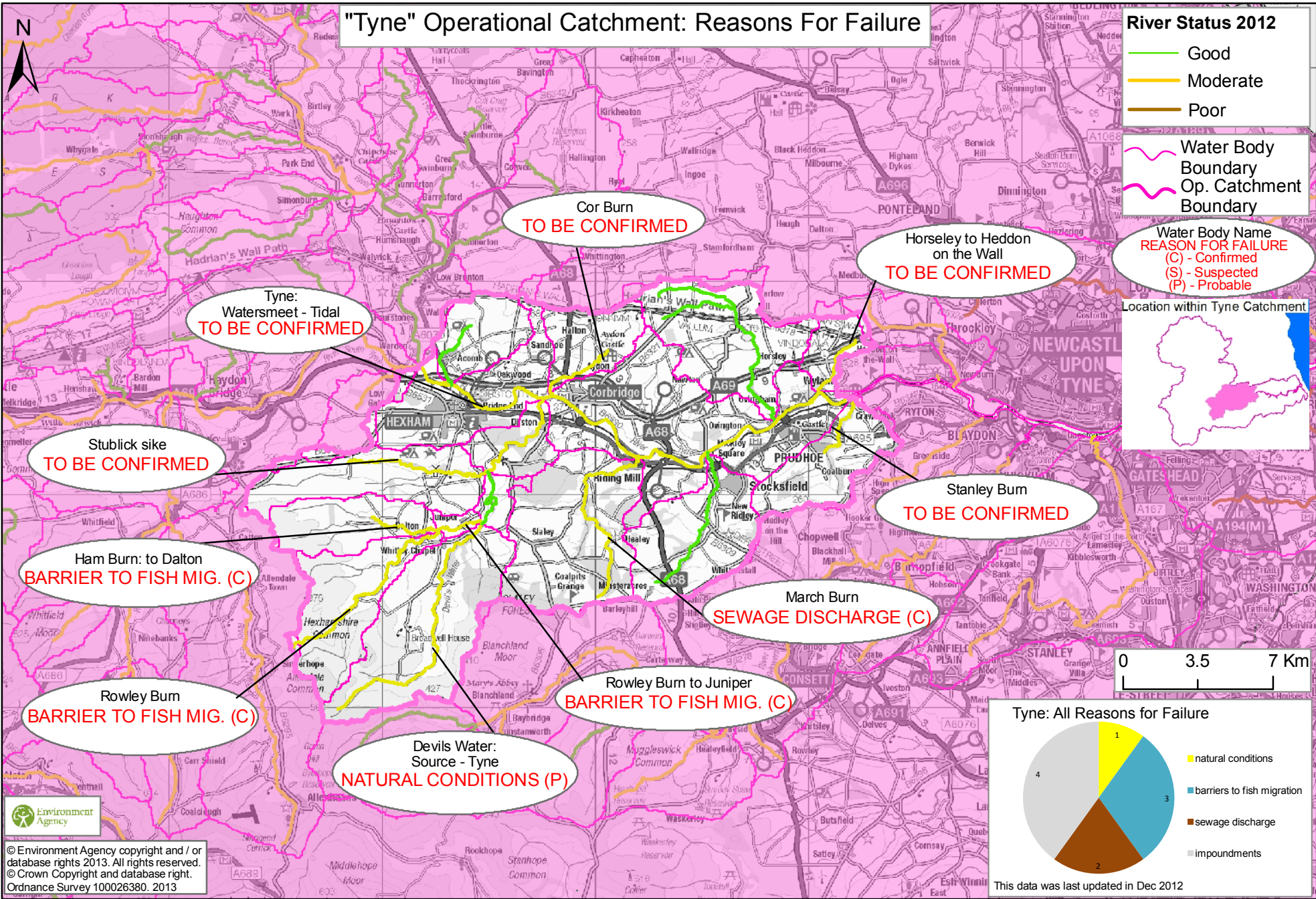


Derwent: All Reasons for Failure



This data was last updated in Dec 2012

"Tyne" Operational Catchment: Reasons For Failure

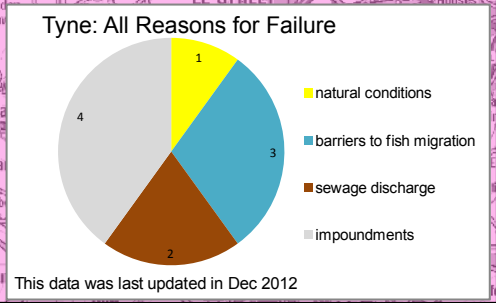
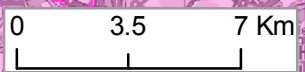
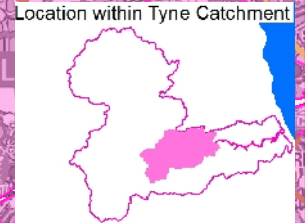


River Status 2012

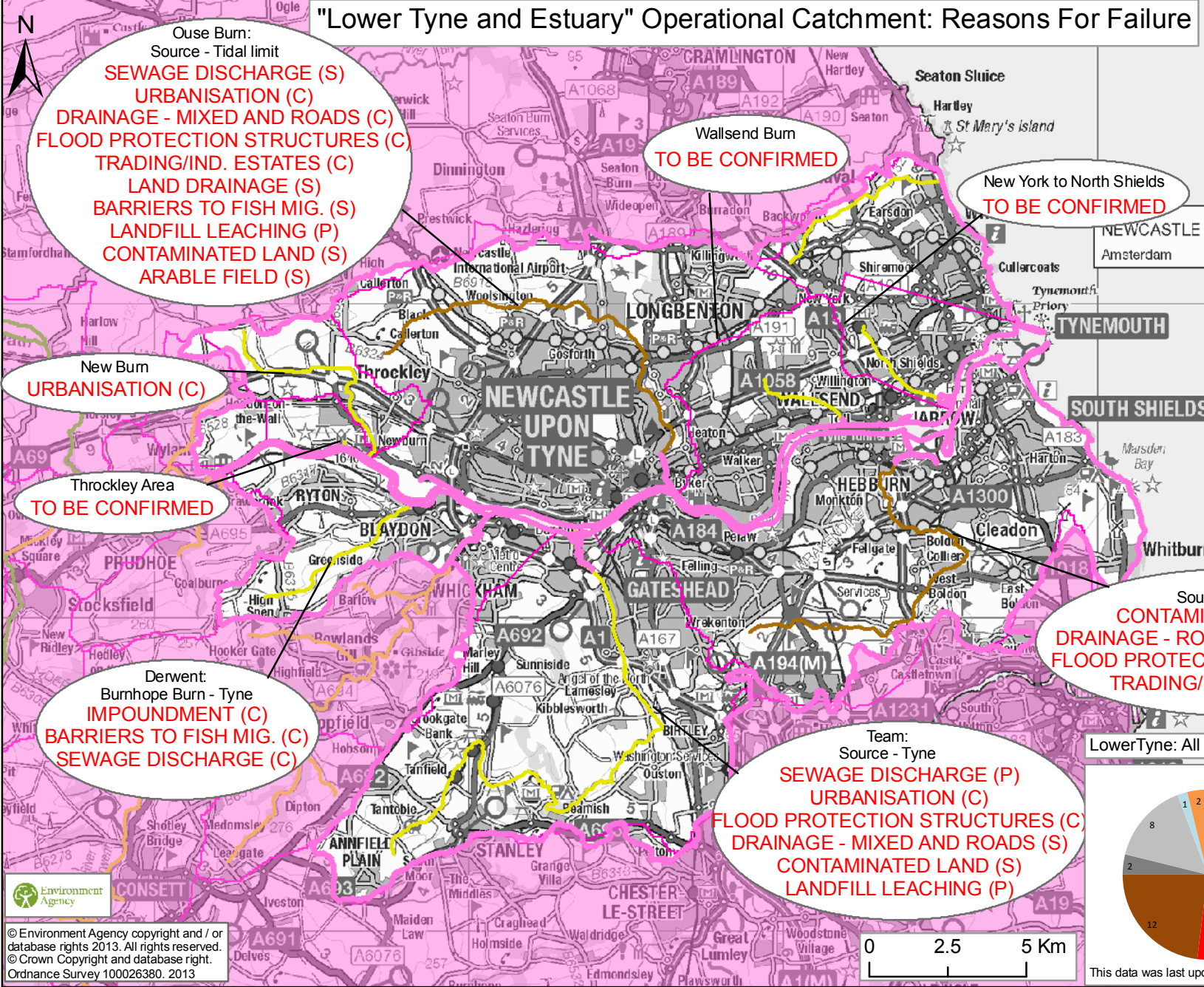
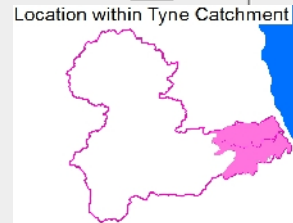
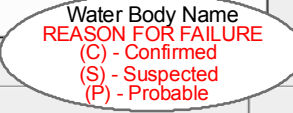
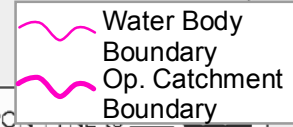
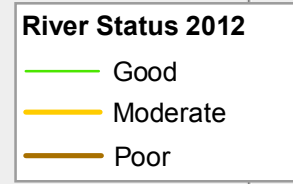
- Good
- Moderate
- Poor

Water Body Boundary
Op. Catchment Boundary

Water Body Name
REASON FOR FAILURE
(C) - Confirmed
(S) - Suspected
(P) - Probable



"Lower Tyne and Estuary" Operational Catchment: Reasons For Failure



LowerTyne: All Reasons for Failure

