



Ministry of
JUSTICE

**Population in custody
monthly tables
June 2009
England and Wales**

Ministry of Justice
Statistics bulletin

Published 31 July 2009

Population in custody June 2009 – Key points

Population in custody

- The population in custody on 30 June 2009 was 83,900, a rise of 220 from a year earlier. The population in prisons was 83,500 (rise of 260 from a year earlier), in Secure Training Centres (STCs) it was 260 and in Secure Children's Homes (SCHs) it was 180.

Population in prison

- The male prison population increased by 1 per cent (up 470) to 79,200 and the female prison population decreased 5 per cent (down 210) to 4,300 in June 2009 compared to June 2008.
- The remand population in prison hardly changed between June 2008 and June 2009. However within this total, the untried population increased 2 per cent (up 180) to 8,900 and the convicted unsentenced population went down 4 per cent (down 170), to 4,500.
- Amongst the remand population the changes since June 2008 by offence group were all less than 100 apart from theft and handling which dropped by 12 per cent (down 120).
- There were 68,400 sentenced¹ prisoners at 30 June 2009, up 250 from a year earlier. There were increases for longer sentences and decreases for shorter sentences. Those serving indeterminate sentences (Life sentences and Indeterminate sentences for Public Protection) which increased by 10 per cent (up 1,100), those serving sentences of 1 year to less than 4 years increased by 1 per cent (up 150) and those serving determinate sentences of 4 years or more also increased by 1 per cent (up 130). Those serving a sentence of less than or equal to 6 months fell by 13 per cent (down 760), and greater than 6 and less than 12 months fell by 14 per cent (down 400). The falls for sentences of less than 12 months were against a relatively high short-sentenced population a year ago.
- Amongst the sentenced¹ prison population the increases were for violence against the person (up 970, 5 per cent), sexual offences (up 360, 5 per cent) and robbery (up 320, 4 per cent) from June 2008. The largest proportionate decreases since June 2008 were in those serving sentences for motoring offences (down 230 17 per cent), theft and handling (down 450, 12 per cent), fraud and forgery (down 150, 7 per cent) and other offences (down 370, 6 per cent).
- The adult population in prison was 71,600 at 30 June 2009, an increase of 1 per cent (up 500) from a year earlier. Over the same time period the number of 15 to 17 year olds fell 17 per cent (down 430) to 2,100 and the young adult prison population increased 2 per cent (up 190) to 9,800.
- The prison population was 111 per cent of the 'In Use CNA' (74,800) at 30 June 2009.

¹ Includes recalls and excludes fine defaulters

- On 30 June 2009, the foreign national prison population was 11,400. This includes those held under the Immigration Act 1971 (including those in the immigration removal centres Dover, Haslar and Lindholme) as well as those held on remand or serving custodial sentences.
- The largest foreign national population at 30 June 2009 were Jamaican nationals, with a population of 1,060 followed by Nigeria (770), Republic of Ireland (630), Vietnam (560), Poland (520) China (480) and Pakistan (460).

Figure A: Remand population by offence group

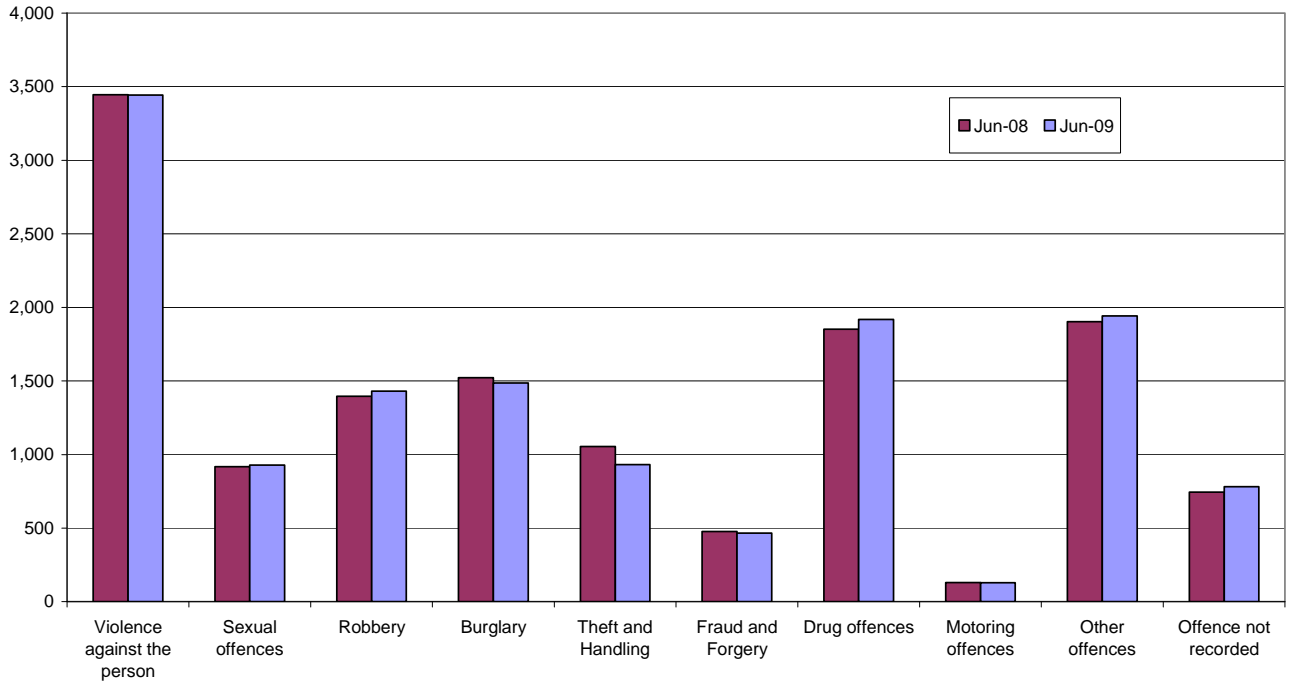
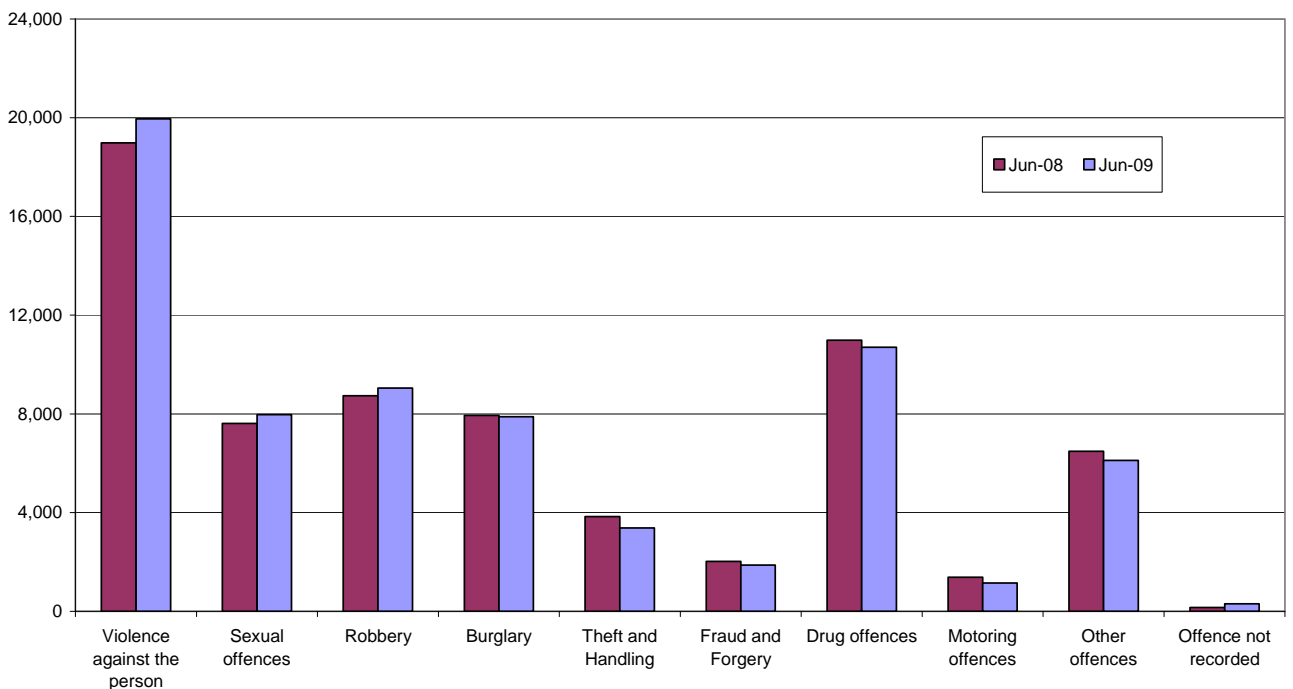


Figure B: Immediate custodial sentenced population by offence group



Notes

Data sources and quality

The data presented in this brief are drawn from the prison administrative IT systems. Although care is taken when processing and analysing the returns, the detail collected is subject to the inaccuracies inherent in any large-scale recording system. While the figures shown have been checked as far as practicable, they should be regarded as approximate and not necessarily accurate to the last whole number shown in the tables. They are fit to be used for purposes of looking at trends and for comparing the relative magnitude of components.

The prison population information has been drawn from two prison sources. The first source is the routine provision by prison establishments of records of the numbers of persons held in custody at the end of each month, broadly subdivided according to age, sex, custody type and sentence length. The records are collated and processed centrally, to produce the main estimates of the end of month population presented. The second source is the electronically held details for individual inmates such as date of birth, sex, religion, ethnic origin, custody type, offence, and reception and discharge dates and, for sentenced prisoners, sentence length. These data are collected on a central computer database and are used to produce the analyses by offence group and individual year of age. They form the basis of detailed population breakdowns, supplementing the aggregates derived from the first source, to which they are scaled for consistency. A new more detailed method of scaling this information was developed in 2004.

Because the detailed population breakdowns have been scaled and also rounded to the nearest whole number, individual components may not sum to the totals.

Unless otherwise stated, numbers in the text have been rounded for ease of reading using the following rules:

Numbers of 100,000 and over are rounded to the nearest 1,000

Numbers from 1,000 – 99,999 are rounded to the nearest 100

Numbers from 10 – 999 are rounded to the nearest 10

Numbers under 10 are unrounded.

Information on the population in STCs and SCHs has been supplied by the Youth Justice Board.

All figures are provisional pending publication of the annual Offender Management Caseload Statistics.

Definitions

Population in custody – this includes those held in prison establishments, police cells under Operation Safeguard, secure training centres (STCs) and secure children's homes (SCHs). This is a change to previous outputs (notably Prison Population Monthly Brief and

Prison Statistics England and Wales) where the reference to 'population in custody' just covered those held in prison establishments and police cells. All coverage is for England and Wales.

Population in prison – this includes those held in prisons in England and Wales, including the three removal centres of Dover, Haslar and Lindholme.

Sentenced population – this includes those sentenced to an immediate custodial sentence and fine defaulters.

Immediate custodial sentence – this does not include fine defaulters.

Adult prisoners – these are prisoners aged 21 years and over.

Young adults – these are prisoners aged 18 to 20, but including 21 year old prisoners who were aged 20 or under at conviction who have not been reclassified as part of the adult population.

Indeterminate sentences – these cover life sentences and indeterminate sentences for public protection (IPP).

Contact points for further information

Current and previous editions of this publication are available for download at www.justice.gov.uk/publications/populationincustody.htm. Future reports will be published on a monthly basis. Spreadsheet files of the tables contained in this document are also available for download from this address.

Press enquiries should be directed to the Ministry of Justice press office:

Tel: 020 3334 3536

Other enquiries about these statistics should be directed to:

Ministry of Justice
Offender Management and Sentencing – Analytical Services
2nd Floor Fry Building
2 Marsham Street
London
SW1P 4DF
Tel: 020 7035 3470

General enquiries about the statistical work of the Ministry of Justice can be e-mailed to: statistics.enquiries@justice.gsi.gov.uk

General information about the official statistics system of the UK is available from www.statistics.gov.uk

© Crown copyright
Produced by the Ministry of Justice

Alternative formats are available on request from statistics.enquiries@justice.gsi.gov.uk

Table 1: Population in custody: by type of custody and sex

| | Jun-08 | | | Jun-09 | | | Percentage change 2008 to 2009 | | |
|---|---------------|--------------|---------------|---------------|--------------|---------------|--------------------------------|------------|------------|
| | Males | Females | Total | Males | Females | Total | Males | Females | Total |
| All population in custody, of which | 79,007 | 4,660 | 83,667 | 79,481 | 4,406 | 83,887 | 1 | -5 | 0 |
| Prisons | 78,689 | 4,505 | 83,194 | 79,158 | 4,296 | 83,454 | 1 | -5 | 0 |
| Police cells | 0 | 0 | 0 | 0 | 0 | 0 | * | * | * |
| SCHs | 167 | 44 | 211 | 139 | 36 | 175 | -17 | * | -17 |
| STCs | 151 | 111 | 262 | 184 | 74 | 258 | 22 | -33 | -2 |
| All population in prison, of which | 78,689 | 4,505 | 83,194 | 79,158 | 4,296 | 83,454 | 1 | -5 | 0 |
| Remand | 12,566 | 874 | 13,440 | 12,617 | 839 | 13,456 | 0 | -4 | 0 |
| Untried | 8,177 | 573 | 8,750 | 8,379 | 554 | 8,933 | 2 | -3 | 2 |
| Convicted unsentenced | 4,389 | 301 | 4,690 | 4,238 | 285 | 4,523 | -3 | -5 | -4 |
| Under sentence | 64,699 | 3,535 | 68,234 | 65,092 | 3,396 | 68,488 | 1 | -4 | 0 |
| Fine defaulter | 99 | 11 | 110 | 99 | 14 | 113 | 0 | * | 3 |
| Less than or equal to 6 months | 5,323 | 552 | 5,875 | 4,658 | 458 | 5,115 | -13 | -17 | -13 |
| Greater than 6 months to less than 12 months | 2,600 | 266 | 2,866 | 2,271 | 193 | 2,465 | -13 | -27 | -14 |
| 12 months to less than 4 years | 22,326 | 1,306 | 23,632 | 22,460 | 1,318 | 23,778 | 1 | 1 | 1 |
| 4 years or more (excluding Indeterminate sentences) | 23,318 | 1,053 | 24,371 | 23,458 | 1,039 | 24,497 | 1 | -1 | 1 |
| Indeterminate sentences | 11,033 | 347 | 11,380 | 12,146 | 374 | 12,520 | 10 | 8 | 10 |
| Non-criminal prisoners | 1,424 | 96 | 1,520 | 1,449 | 61 | 1,510 | 2 | -36 | -1 |
| All adult population in prison, of which | 67,066 | 4,013 | 71,079 | 67,705 | 3,872 | 71,577 | 1 | -4 | 1 |
| Remand | 10,067 | 767 | 10,834 | 10,105 | 727 | 10,832 | 0 | -5 | 0 |
| Untried | 6,668 | 503 | 7,171 | 6,759 | 482 | 7,241 | 1 | -4 | 1 |
| Convicted unsentenced | 3,399 | 264 | 3,663 | 3,346 | 245 | 3,591 | -2 | -7 | -2 |
| Under sentence | 55,714 | 3,158 | 58,872 | 56,263 | 3,087 | 59,350 | 1 | -2 | 1 |
| Fine defaulter | 93 | 11 | 104 | 95 | 13 | 108 | 2 | * | 4 |
| Less than or equal to 6 months | 4,025 | 459 | 4,484 | 3,610 | 386 | 3,995 | -10 | -16 | -11 |
| Greater than 6 months to less than 12 months | 1,913 | 233 | 2,146 | 1,687 | 173 | 1,861 | -12 | -26 | -13 |
| 12 months to less than 4 years | 17,776 | 1,146 | 18,922 | 17,868 | 1,174 | 19,042 | 1 | 2 | 1 |
| 4 years or more (excluding Indeterminate sentences) | 21,682 | 984 | 22,666 | 21,579 | 984 | 22,563 | 0 | 0 | 0 |
| Indeterminate sentences | 10,225 | 325 | 10,550 | 11,424 | 357 | 11,781 | 12 | 10 | 12 |
| Non-criminal prisoners | 1,285 | 88 | 1,373 | 1,337 | 58 | 1,395 | 4 | -34 | 2 |
| All 15 -17 year olds in prison, of which | 2,456 | 70 | 2,527 | 2,048 | 54 | 2,102 | -17 | -23 | -17 |
| Remand | 580 | 14 | 593 | 531 | 12 | 543 | -8 | * | -8 |
| Untried | 360 | 6 | 366 | 372 | 8 | 380 | 3 | * | 4 |
| Convicted unsentenced | 219 | 8 | 227 | 159 | 4 | 163 | -27 | * | -28 |
| Under sentence | 1,876 | 57 | 1,932 | 1,517 | 42 | 1,559 | -19 | * | -19 |
| Fine defaulter | 0 | 0 | 0 | 0 | 0 | 0 | * | * | * |
| Less than or equal to 6 months | 467 | 20 | 488 | 324 | 13 | 337 | -31 | * | -31 |
| Greater than 6 months to less than 12 months | 277 | 7 | 284 | 204 | 6 | 209 | -27 | * | -26 |
| 12 months to less than 4 years | 906 | 24 | 930 | 770 | 12 | 782 | -15 | * | -16 |
| 4 years or more (excluding Indeterminate sentences) | 144 | 6 | 150 | 156 | 5 | 161 | 8 | * | 7 |
| Indeterminate sentences | 81 | 0 | 81 | 65 | 5 | 70 | -20 | * | -14 |
| Non-criminal prisoners | 1 | 0 | 1 | 0 | 0 | 0 | * | * | * |
| All young adults¹ in prison, of which | 9,167 | 422 | 9,588 | 9,405 | 370 | 9,775 | 3 | -12 | 2 |
| Remand | 1,919 | 93 | 2,013 | 1,981 | 100 | 2,081 | 3 | 8 | 3 |
| Untried | 1,149 | 64 | 1,213 | 1,248 | 64 | 1,312 | 9 | 0 | 8 |
| Convicted unsentenced | 771 | 29 | 800 | 733 | 36 | 769 | -5 | * | -4 |
| Under sentence | 7,109 | 320 | 7,430 | 7,312 | 267 | 7,579 | 3 | -16 | 2 |
| Fine defaulter | 6 | 0 | 6 | 4 | 1 | 5 | * | * | * |
| Less than or equal to 6 months | 831 | 73 | 904 | 724 | 59 | 783 | -13 | -20 | -13 |
| Greater than 6 months to less than 12 months | 409 | 26 | 436 | 381 | 14 | 395 | -7 | * | -9 |
| 12 months to less than 4 years | 3,644 | 136 | 3,780 | 3,822 | 132 | 3,954 | 5 | -3 | 5 |
| 4 years or more (excluding Indeterminate sentences) | 1,492 | 64 | 1,555 | 1,723 | 50 | 1,773 | 16 | -22 | 14 |
| Indeterminate sentences | 727 | 22 | 749 | 657 | 12 | 669 | -10 | * | -11 |
| Non-criminal prisoners | 138 | 8 | 146 | 112 | 3 | 115 | -19 | * | -21 |

¹ Young adults are those aged 18 - 20 and those 21 year olds who were aged 20 or under at conviction who have not been reclassified as part of the adult population

* Indicates that one or both of the comparative numbers are less than 50 which could give rise to misleading percentage changes

Data Sources and Quality

These figures have been drawn from administrative IT systems which, as with any large scale recording system, are subject to possible errors with data entry and processing. See Data Sources and Quality section of report for more information.

Table 2: Population in prison by offence - remand and immediate custodial sentence

| | Jun-08 | | Jun-09 | | Percentage change 2008 to 2009 | |
|-----------------------------|---------------|------------------------------|---------------|------------------------------|--------------------------------|------------------------------|
| | Remand | Immediate custodial sentence | Remand | Immediate custodial sentence | Remand | Immediate custodial sentence |
| All prisoners | 13,440 | 68,124 | 13,456 | 68,375 | 0 | 0 |
| Violence against the person | 3,445 | 18,980 | 3,444 | 19,950 | 0 | 5 |
| Sexual offences | 917 | 7,616 | 928 | 7,972 | 1 | 5 |
| Robbery | 1,395 | 8,733 | 1,431 | 9,049 | 3 | 4 |
| Burglary | 1,522 | 7,935 | 1,486 | 7,884 | -2 | -1 |
| Theft and Handling | 1,054 | 3,836 | 931 | 3,382 | -12 | -12 |
| Fraud and Forgery | 477 | 2,020 | 466 | 1,875 | -2 | -7 |
| Drug offences | 1,852 | 10,982 | 1,919 | 10,696 | 4 | -3 |
| Motoring offences | 130 | 1,377 | 129 | 1,149 | -1 | -17 |
| Other offences | 1,903 | 6,486 | 1,942 | 6,117 | 2 | -6 |
| Offence not recorded | 745 | 160 | 781 | 300 | 5 | 87 |
| All male prisoners | 12,566 | 64,600 | 12,617 | 64,993 | 0 | 1 |
| Violence against the person | 3,280 | 18,204 | 3,267 | 19,111 | 0 | 5 |
| Sexual offences | 911 | 7,569 | 913 | 7,918 | 0 | 5 |
| Robbery | 1,331 | 8,437 | 1,361 | 8,715 | 2 | 3 |
| Burglary | 1,455 | 7,733 | 1,437 | 7,678 | -1 | -1 |
| Theft and Handling | 930 | 3,373 | 823 | 2,963 | -12 | -12 |
| Fraud and Forgery | 398 | 1,725 | 410 | 1,628 | 3 | -6 |
| Drug offences | 1,708 | 9,992 | 1,787 | 9,803 | 5 | -2 |
| Motoring offences | 127 | 1,356 | 128 | 1,130 | 1 | -17 |
| Other offences | 1,765 | 6,068 | 1,796 | 5,758 | 2 | -5 |
| Offence not recorded | 661 | 144 | 695 | 288 | 5 | 100 |
| All female prisoners | 874 | 3,524 | 839 | 3,382 | -4 | -4 |
| Violence against the person | 165 | 775 | 177 | 840 | 7 | 8 |
| Sexual offences | 6 | 47 | 15 | 54 | * | * |
| Robbery | 64 | 295 | 70 | 334 | 9 | 13 |
| Burglary | 67 | 203 | 49 | 207 | * | 2 |
| Theft and Handling | 124 | 462 | 108 | 418 | -13 | -9 |
| Fraud and Forgery | 79 | 295 | 56 | 246 | -29 | -16 |
| Drug offences | 144 | 990 | 132 | 893 | -9 | -10 |
| Motoring offences | 3 | 22 | 1 | 19 | * | * |
| Other offences | 138 | 418 | 146 | 359 | 6 | -14 |
| Offence not recorded | 84 | 16 | 85 | 12 | 2 | * |

Table 2: Population in prison by offence - remand and immediate custodial sentence

| | Jun-08 | | Jun-09 | | Percentage change 2008 to 2009 | |
|-----------------------------------|---------------|------------------------------|---------------|------------------------------|--------------------------------|------------------------------|
| | Remand | Immediate custodial sentence | Remand | Immediate custodial sentence | Remand | Immediate custodial sentence |
| All adult prisoners | 10,834 | 58,768 | 10,832 | 59,242 | 0 | 1 |
| Violence against the person | 2,725 | 16,294 | 2,720 | 17,304 | 0 | 6 |
| Sexual offences | 808 | 7,193 | 817 | 7,542 | 1 | 5 |
| Robbery | 837 | 6,528 | 873 | 6,763 | 4 | 4 |
| Burglary | 1,191 | 6,698 | 1,114 | 6,621 | -6 | -1 |
| Theft and Handling | 880 | 3,293 | 758 | 2,917 | -14 | -11 |
| Fraud and Forgery | 445 | 1,970 | 441 | 1,825 | -1 | -7 |
| Drug offences | 1,617 | 10,075 | 1,692 | 9,841 | 5 | -2 |
| Motoring offences | 109 | 1,199 | 107 | 1,024 | -2 | -15 |
| Other offences | 1,569 | 5,387 | 1,604 | 5,153 | 2 | -4 |
| Offence not recorded | 653 | 131 | 707 | 252 | 8 | 92 |
| All adult male prisoners | 10,067 | 55,621 | 10,105 | 56,168 | 0 | 1 |
| Violence against the person | 2,583 | 15,644 | 2,577 | 16,583 | 0 | 6 |
| Sexual offences | 801 | 7,146 | 804 | 7,491 | 0 | 5 |
| Robbery | 791 | 6,291 | 815 | 6,489 | 3 | 3 |
| Burglary | 1,130 | 6,515 | 1,071 | 6,430 | -5 | -1 |
| Theft and Handling | 768 | 2,866 | 659 | 2,527 | -14 | -12 |
| Fraud and Forgery | 368 | 1,685 | 387 | 1,580 | 5 | -6 |
| Drug offences | 1,492 | 9,149 | 1,578 | 8,996 | 6 | -2 |
| Motoring offences | 106 | 1,179 | 106 | 1,005 | 0 | -15 |
| Other offences | 1,452 | 5,029 | 1,480 | 4,826 | 2 | -4 |
| Offence not recorded | 577 | 116 | 629 | 241 | 9 | 107 |
| All adult female prisoners | 767 | 3,147 | 727 | 3,074 | -5 | -2 |
| Violence against the person | 143 | 650 | 142 | 721 | -1 | 11 |
| Sexual offences | 6 | 47 | 13 | 51 | * | * |
| Robbery | 47 | 236 | 58 | 274 | * | 16 |
| Burglary | 62 | 183 | 44 | 190 | * | 4 |
| Theft and Handling | 112 | 427 | 99 | 390 | -12 | -9 |
| Fraud and Forgery | 77 | 285 | 54 | 245 | -30 | -14 |
| Drug offences | 125 | 926 | 114 | 845 | -9 | -9 |
| Motoring offences | 3 | 20 | 1 | 19 | * | * |
| Other offences | 117 | 358 | 124 | 327 | 6 | -9 |
| Offence not recorded | 76 | 14 | 78 | 12 | 3 | * |

Table 2: Population in prison by offence - remand and immediate custodial sentence

| | | | | | <i>Percentage change 2008 to 2009</i> | |
|-------------------------------|------------|------------------------------|------------|------------------------------|---------------------------------------|-------------------------------------|
| | Remand | Immediate custodial sentence | Remand | Immediate custodial sentence | <i>Remand</i> | <i>Immediate custodial sentence</i> |
| All aged 15-17 | 593 | 1,932 | 543 | 1,559 | -8 | -19 |
| Violence against the person | 160 | 507 | 151 | 381 | -6 | -25 |
| Sexual offences | 37 | 74 | 22 | 77 | * | 4 |
| Robbery | 168 | 485 | 167 | 451 | -1 | -7 |
| Burglary | 85 | 319 | 78 | 251 | -9 | -21 |
| Theft and Handling | 29 | 153 | 27 | 127 | * | -17 |
| Fraud and Forgery | 3 | 4 | 0 | 1 | * | * |
| Drug offences | 38 | 111 | 41 | 86 | * | -23 |
| Motoring offences | 3 | 26 | 3 | 13 | * | * |
| Other offences | 63 | 247 | 51 | 168 | -19 | -32 |
| Offence not recorded | 7 | 6 | 3 | 4 | * | * |
| All males aged 15-17 | 580 | 1,876 | 531 | 1,517 | -8 | -19 |
| Violence against the person | 159 | 489 | 147 | 366 | -8 | -25 |
| Sexual offences | 37 | 74 | 22 | 77 | * | 4 |
| Robbery | 165 | 472 | 165 | 440 | 0 | -7 |
| Burglary | 85 | 315 | 78 | 248 | -9 | -21 |
| Theft and Handling | 28 | 147 | 26 | 124 | * | -16 |
| Fraud and Forgery | 3 | 4 | 0 | 1 | * | * |
| Drug offences | 38 | 106 | 39 | 82 | * | -23 |
| Motoring offences | 3 | 26 | 3 | 13 | * | * |
| Other offences | 56 | 238 | 48 | 161 | * | -32 |
| Offence not recorded | 5 | 5 | 3 | 4 | * | * |
| All females aged 15-17 | 14 | 57 | 12 | 42 | * | * |
| Violence against the person | 1 | 19 | 4 | 15 | * | * |
| Sexual offences | 0 | 0 | 0 | 0 | * | * |
| Robbery | 3 | 13 | 2 | 10 | * | * |
| Burglary | 0 | 5 | 0 | 3 | * | * |
| Theft and Handling | 1 | 6 | 1 | 3 | * | * |
| Fraud and Forgery | 0 | 0 | 0 | 0 | * | * |
| Drug offences | 0 | 5 | 2 | 4 | * | * |
| Motoring offences | 0 | 0 | 0 | 0 | * | * |
| Other offences | 7 | 9 | 3 | 7 | * | * |
| Offence not recorded | 2 | 1 | 0 | 0 | * | * |

Table 2: Population in prison by offence - remand and immediate custodial sentence

| | Jun-08 | | Jun-09 | | Percentage change 2008 to 2009 | |
|--|--------------|------------------------------|--------------|------------------------------|--------------------------------|------------------------------|
| | Remand | Immediate custodial sentence | Remand | Immediate custodial sentence | Remand | Immediate custodial sentence |
| All young adults¹ | 2,013 | 7,424 | 2,081 | 7,574 | 3 | 2 |
| Violence against the person | 560 | 2,178 | 574 | 2,265 | 2 | 4 |
| Sexual offences | 73 | 349 | 89 | 353 | 22 | 1 |
| Robbery | 389 | 1,720 | 391 | 1,836 | 1 | 7 |
| Burglary | 246 | 917 | 294 | 1,012 | 19 | 10 |
| Theft and Handling | 145 | 389 | 146 | 338 | 1 | -13 |
| Fraud and Forgery | 29 | 46 | 25 | 49 | * | * |
| Drug offences | 197 | 796 | 186 | 770 | -6 | -3 |
| Motoring offences | 17 | 153 | 18 | 112 | * | -27 |
| Other offences | 271 | 851 | 287 | 795 | 6 | -7 |
| Offence not recorded | 85 | 24 | 70 | 44 | -17 | * |
| All male young adults¹ | 1,919 | 7,103 | 1,981 | 7,308 | 3 | 3 |
| Violence against the person | 539 | 2,071 | 543 | 2,161 | 1 | 4 |
| Sexual offences | 73 | 349 | 87 | 350 | 19 | 0 |
| Robbery | 375 | 1,674 | 382 | 1,786 | 2 | 7 |
| Burglary | 240 | 902 | 289 | 999 | 20 | 11 |
| Theft and Handling | 134 | 360 | 138 | 313 | 3 | -13 |
| Fraud and Forgery | 26 | 37 | 23 | 48 | * | * |
| Drug offences | 179 | 736 | 170 | 725 | -5 | -1 |
| Motoring offences | 17 | 151 | 18 | 112 | * | -26 |
| Other offences | 257 | 800 | 268 | 771 | 4 | -4 |
| Offence not recorded | 79 | 23 | 63 | 44 | -20 | * |
| All female young adults¹ | 93 | 320 | 100 | 266 | 8 | -17 |
| Violence against the person | 22 | 106 | 31 | 104 | * | -2 |
| Sexual offences | 0 | 0 | 2 | 3 | * | * |
| Robbery | 14 | 46 | 10 | 50 | * | * |
| Burglary | 5 | 15 | 5 | 14 | * | * |
| Theft and Handling | 11 | 30 | 8 | 26 | * | * |
| Fraud and Forgery | 2 | 10 | 2 | 1 | * | * |
| Drug offences | 18 | 60 | 16 | 45 | * | * |
| Motoring offences | 0 | 2 | 0 | 0 | * | * |
| Other offences | 14 | 51 | 19 | 25 | * | * |
| Offence not recorded | 6 | 1 | 7 | 0 | * | * |

¹ Young adults are those aged 18 - 20 and those 21 year olds who were aged 20 or under at conviction who have not been reclassified as part of the adult population

* Indicates that one or both of the comparative numbers are less than 50 which could give rise to misleading percentage changes

June 2009 and June 2008 data are not directly comparable because some improvements have been made to the way offences are grouped which has resulted in small changes to some offence groups

Data Sources and Quality

These figures have been drawn from administrative IT systems which, as with any large scale recording system, are subject to possible errors with data entry and processing. See Data Sources and Quality section of report for more information.

Table 3: Young population in prison: by type of custody and sex**30 June 2009**

| | 15 | 16 | 17 | Total Under 18 | 18 | 19 | 20 | 21 | Total Young Adults ¹ |
|---|------------|------------|------------|-------------------|--------------|--------------|--------------|------------|------------------------------------|
| All young population in prisons, of which | | | | | | | | | |
| <i>Prisoners on remand</i> | 71 | 143 | 329 | 543 | 650 | 720 | 633 | 77 | 2,081 |
| Untried | 49 | 99 | 232 | 380 | 418 | 447 | 384 | 62 | 1,312 |
| Convicted unsentenced | 23 | 43 | 97 | 163 | 232 | 273 | 248 | 15 | 769 |
| <i>Prisoners under sentence</i> | 130 | 452 | 976 | 1,559 | 1,541 | 2,416 | 2,894 | 728 | 7,579 |
| Fine defaulter | 0 | 0 | 0 | 0 | 1 | 2 | 3 | 0 | 5 |
| Immediate custodial sentence | 130 | 452 | 976 | 1,559 | 1,541 | 2,414 | 2,891 | 728 | 7,574 |
| <i>Non-criminal prisoners</i> | 0 | 0 | 0 | 0 | 24 | 24 | 46 | 21 | 115 |
| All young male population in prisons, of which | | | | | | | | | |
| <i>Prisoners on remand</i> | 71 | 143 | 317 | 531 | 622 | 689 | 593 | 77 | 1,981 |
| Untried | 49 | 99 | 224 | 372 | 396 | 430 | 360 | 62 | 1,248 |
| Convicted unsentenced | 23 | 43 | 93 | 159 | 226 | 259 | 233 | 15 | 733 |
| <i>Prisoners under sentence</i> | 130 | 452 | 935 | 1,517 | 1,488 | 2,318 | 2,792 | 714 | 7,312 |
| Fine defaulter | 0 | 0 | 0 | 0 | 1 | 2 | 2 | 0 | 4 |
| Immediate custodial sentence | 130 | 452 | 935 | 1,517 | 1,487 | 2,316 | 2,790 | 714 | 7,308 |
| <i>Non-criminal prisoners</i> | 0 | 0 | 0 | 0 | 21 | 24 | 46 | 21 | 112 |
| All young female population in prisons, of which | | | | | | | | | |
| <i>Prisoners on remand</i> | 0 | 0 | 12 | 12 | 28 | 32 | 40 | 0 | 100 |
| Untried | 0 | 0 | 8 | 8 | 22 | 17 | 24 | 0 | 64 |
| Convicted unsentenced | 0 | 0 | 4 | 4 | 6 | 15 | 16 | 0 | 36 |
| <i>Prisoners under sentence</i> | 0 | 0 | 42 | 42 | 54 | 98 | 102 | 14 | 267 |
| Fine defaulter | 0 | 0 | 0 | 0 | 0 | 0 | 1 | 0 | 1 |
| Immediate custodial sentence | 0 | 0 | 42 | 42 | 54 | 98 | 101 | 14 | 266 |
| <i>Non-criminal prisoners</i> | 0 | 0 | 0 | 0 | 3 | 0 | 0 | 0 | 3 |

¹ Young adults are those aged 18 - 20 and those 21 year olds who were aged 20 or under at conviction who have not been reclassified as part of the adult population

These figures have been drawn from administrative IT systems, which, as with any large scale recording system, are subject to possible errors with data entry and processing. See Data Sources and Quality section of report for more information.

Table 4: CNA and population by sex and establishment

30 June 2009

| Establishment | In use CNA ¹ | Total Population | Of which: | | |
|-----------------------|-------------------------|------------------|-------------------|--------------|--------------------------|
| | | | Foreign nationals | UK nationals | Nationality not recorded |
| Males | | | | | |
| Acklington | 946 | 940 | 25 | 915 | 0 |
| Albany | 567 | 554 | 62 | 483 | 9 |
| Altcourse | 794 | 1,314 | 114 | 1,186 | 13 |
| Ashfield | 400 | 338 | 18 | 313 | 7 |
| Ashwell | 184 | 200 | 19 | 181 | 0 |
| Aylesbury | 437 | 433 | 63 | 370 | 0 |
| Bedford | 321 | 461 | 105 | 352 | 4 |
| Belmarsh | 800 | 897 | 176 | 702 | 19 |
| Birmingham | 1,109 | 1,444 | 196 | 1,224 | 24 |
| Blantyre House | 122 | 118 | 2 | 115 | 1 |
| Blundeston | 481 | 514 | 77 | 434 | 3 |
| Brinsford | 545 | 521 | 37 | 483 | 1 |
| Bristol | 424 | 607 | 58 | 541 | 7 |
| Brixton | 606 | 792 | 285 | 490 | 16 |
| Buckley Hall | 346 | 377 | 21 | 356 | 0 |
| Bullingdon | 879 | 1,081 | 141 | 936 | 4 |
| Bullwood Hall | 180 | 229 | 221 | 5 | 2 |
| Camp Hill | 520 | 566 | 79 | 450 | 37 |
| Canterbury | 195 | 295 | 281 | 10 | 3 |
| Cardiff | 548 | 819 | 60 | 746 | 13 |
| Castington | 400 | 371 | 10 | 359 | 2 |
| Channings Wood | 696 | 722 | 18 | 704 | 0 |
| Chelmsford | 554 | 692 | 90 | 583 | 19 |
| Coldingley | 494 | 506 | 20 | 486 | 0 |
| Cookham Wood | 90 | 86 | 6 | 79 | 1 |
| Dartmoor | 596 | 620 | 68 | 552 | 0 |
| Deerbolt | 513 | 431 | 10 | 420 | 1 |
| Doncaster | 771 | 1,103 | 80 | 970 | 53 |
| Dorchester | 137 | 226 | 14 | 206 | 6 |
| Dovegate | 800 | 848 | 97 | 750 | 1 |
| Dover | 316 | 310 | 307 | 0 | 3 |
| Durham | 593 | 958 | 94 | 857 | 6 |
| Edmunds Hill | 361 | 369 | 90 | 276 | 3 |
| Elmley | 735 | 954 | 145 | 794 | 14 |
| Erlestoke | 470 | 468 | 11 | 457 | 0 |
| Everthorpe | 603 | 674 | 9 | 665 | 0 |
| Exeter | 315 | 531 | 27 | 498 | 7 |
| Featherstone | 663 | 682 | 67 | 614 | 1 |
| Feltham | 762 | 680 | 180 | 471 | 29 |
| Ford | 557 | 529 | 62 | 467 | 0 |
| Forest Bank | 800 | 1,144 | 88 | 1,032 | 24 |
| Frankland | 739 | 734 | 47 | 687 | 0 |
| Full Sutton | 592 | 577 | 45 | 532 | 0 |
| Garth | 812 | 817 | 54 | 763 | 0 |
| Gartree | 683 | 678 | 62 | 613 | 3 |
| Glen Parva | 668 | 793 | 55 | 736 | 2 |
| Gloucester | 225 | 287 | 21 | 254 | 13 |
| Grendon/Spring Hill | 533 | 516 | 24 | 492 | 0 |
| Guys Marsh | 520 | 575 | 89 | 486 | 0 |
| Haslar | 160 | 151 | 149 | 0 | 2 |
| Haverigg | 622 | 629 | 17 | 612 | 0 |
| Hewell ¹ | 1,173 | 1,344 | 170 | 1,170 | 3 |
| High Down | 999 | 1,073 | 223 | 822 | 29 |
| Highpoint | 906 | 930 | 177 | 750 | 3 |
| Hindley | 515 | 289 | 12 | 273 | 4 |
| Hollesley Bay | 345 | 334 | 8 | 326 | 0 |
| Holme House | 857 | 948 | 27 | 918 | 3 |
| Hull | 723 | 1,018 | 75 | 939 | 4 |
| Huntercombe | 360 | 260 | 39 | 215 | 5 |
| Kennet | 175 | 336 | 6 | 330 | 0 |
| Kingston (Portsmouth) | 175 | 175 | 18 | 157 | 0 |
| Kirkham | 590 | 568 | 7 | 561 | 0 |
| Kirklevington Grange | 283 | 270 | 4 | 266 | 0 |
| Lancaster Castle | 159 | 228 | 1 | 227 | 0 |
| Lancaster Farms | 480 | 493 | 18 | 463 | 13 |
| Latchmere House | 207 | 193 | 5 | 188 | 0 |
| Leeds | 829 | 1,157 | 113 | 1,022 | 22 |
| Leicester | 210 | 357 | 71 | 280 | 7 |
| Lewes | 623 | 664 | 60 | 593 | 10 |
| Leyhill | 512 | 492 | 22 | 470 | 0 |

Table 4: CNA and population by sex and establishment

30 June 2009

| Establishment | In use CNA ¹ | Total Population | Of which: | | |
|-----------------|-------------------------|------------------|-------------------|---------------|--------------------------|
| | | | Foreign nationals | UK nationals | Nationality not recorded |
| Lincoln | 436 | 670 | 85 | 576 | 9 |
| Lindholme | 1,054 | 1,114 | 254 | 860 | 0 |
| Littlehey | 663 | 711 | 110 | 601 | 0 |
| Liverpool | 1,166 | 1,337 | 144 | 1,191 | 2 |
| Long Lartin | 545 | 537 | 82 | 455 | 0 |
| Lowdham Grange | 640 | 685 | 105 | 577 | 3 |
| Maidstone | 565 | 590 | 242 | 347 | 1 |
| Manchester | 965 | 1,226 | 163 | 1,023 | 40 |
| Moorland Open | 260 | 241 | 3 | 238 | 0 |
| Moorland Closed | 740 | 771 | 36 | 735 | 0 |
| North Sea Camp | 318 | 303 | 4 | 299 | 0 |
| Northallerton | 147 | 232 | 3 | 229 | 0 |
| Norwich | 447 | 502 | 59 | 437 | 6 |
| Nottingham | 379 | 545 | 77 | 457 | 11 |
| Onley | 710 | 692 | 38 | 654 | 0 |
| Parc | 838 | 1,175 | 43 | 1,126 | 6 |
| Parkhurst | 475 | 491 | 75 | 410 | 6 |
| Pentonville | 813 | 1,105 | 332 | 741 | 33 |
| Peterborough | 480 | 603 | 114 | 466 | 23 |
| Portland | 579 | 553 | 68 | 482 | 3 |
| Preston | 453 | 746 | 37 | 704 | 5 |
| Ranby | 945 | 1,054 | 105 | 948 | 1 |
| Reading | 190 | 242 | 25 | 213 | 4 |
| Risley | 1,048 | 1,080 | 123 | 957 | 0 |
| Rochester | 700 | 647 | 95 | 551 | 1 |
| Rye Hill | 600 | 654 | 134 | 519 | 1 |
| Shepton Mallet | 165 | 188 | 6 | 182 | 0 |
| Shrewsbury | 177 | 290 | 30 | 257 | 3 |
| Stafford | 741 | 735 | 63 | 671 | 0 |
| Standford Hill | 462 | 450 | 38 | 412 | 0 |
| Stocken | 779 | 807 | 47 | 760 | 0 |
| Stoke Heath | 562 | 580 | 27 | 550 | 3 |
| Sudbury | 581 | 570 | 16 | 554 | 0 |
| Swaleside | 808 | 826 | 163 | 661 | 2 |
| Swansea | 230 | 398 | 26 | 370 | 2 |
| Swinfen Hall | 604 | 616 | 47 | 569 | 0 |
| The Mount | 747 | 763 | 207 | 556 | 0 |
| The Verne | 572 | 589 | 336 | 249 | 3 |
| The Wolds | 320 | 388 | 12 | 376 | 0 |
| Thorn Cross | 322 | 301 | 2 | 298 | 1 |
| Usk/Prescoed | 320 | 426 | 23 | 403 | 0 |
| Wakefield | 752 | 735 | 69 | 666 | 0 |
| Wandsworth | 1,107 | 1,675 | 555 | 1,049 | 71 |
| Warren Hill | 222 | 188 | 14 | 161 | 13 |
| Wayland | 955 | 1,000 | 119 | 878 | 2 |
| Wealstun | 505 | 517 | 22 | 495 | 0 |
| Wellingborough | 632 | 628 | 110 | 518 | 0 |
| Werrington | 160 | 130 | 4 | 120 | 6 |
| Wetherby | 408 | 360 | 8 | 344 | 8 |
| Whatton | 776 | 840 | 62 | 778 | 0 |
| Whitmoor | 464 | 444 | 73 | 369 | 2 |
| Winchester | 499 | 689 | 58 | 627 | 4 |
| Woodhill | 656 | 809 | 148 | 640 | 21 |
| Wormwood Scrubs | 1,176 | 1,293 | 465 | 796 | 32 |
| Wymott | 1,081 | 1,127 | 59 | 1,068 | 0 |
| TOTAL | 70,244 | 79,158 | 10,512 | 67,856 | 791 |

Table 4: CNA and population by sex and establishment

30 June 2009

| Establishment | In use CNA ¹ | Total Population | Of which: | | |
|--|-------------------------|------------------|-------------------|---------------|--------------------------|
| | | | Foreign nationals | UK nationals | Nationality not recorded |
| Females | | | | | |
| Askham Grange | 126 | 122 | 2 | 119 | 1 |
| Bronzefield | 450 | 439 | 98 | 295 | 46 |
| Downview | 358 | 340 | 79 | 261 | 0 |
| Drake Hall | 315 | 261 | 44 | 217 | 0 |
| East Sutton Park | 98 | 88 | 5 | 83 | 0 |
| Eastwood Park | 326 | 317 | 45 | 269 | 3 |
| Foston Hall | 264 | 217 | 8 | 207 | 2 |
| Holloway | 496 | 428 | 133 | 284 | 10 |
| Low Newton | 298 | 311 | 15 | 295 | 0 |
| Morton Hall | 392 | 328 | 228 | 101 | 0 |
| New Hall | 393 | 370 | 29 | 334 | 7 |
| Peterborough | 360 | 347 | 61 | 279 | 7 |
| Send | 281 | 278 | 36 | 241 | 1 |
| Styal | 448 | 450 | 55 | 391 | 4 |
| TOTAL | 4,605 | 4,296 | 838 | 3,375 | 83 |
| Male and female establishment total | 74,849 | 83,454 | 11,350 | 71,231 | 874 |
| Police cells total | * | 0 | | | |
| Establishment and police cell total | 74,849 | 83,454 | 11,350 | 71,231 | 874 |

¹ In Use CNA - Certified Normal Accommodation that is available for immediate use, excludes damaged cells, cells affected by building works and cells taken out of use due to staff shortages

² HMP Hewell was created by an amalgamation of the three former prisons, Blakenhurst, Brockhill and Hewell Grange on 25 June 2008

* On 30 June 2009 up to 400 police cells available under operation safeguard which are not included in the CNA figure

Data Sources and Quality

These figures have been drawn from administrative IT systems which, as with any large scale recording system, are subject to possible errors with data entry and processing. See Data Sources and Quality section of report for more information.

Table 5: Population in prison by nationality and sex
30th June 2009

| Nationality | Male | Female | Total | Nationality | Male | Female | Total |
|--|---------------|--------------|---------------|-------------------------------|--------------|------------|--------------|
| All nationalities | 79,158 | 4,296 | 83,454 | | | | |
| British nationals | 67,856 | 3,375 | 71,231 | | | | |
| Foreign nationals | 10,512 | 838 | 11,350 | | | | |
| Nationality not recorded | 791 | 83 | 874 | | | | |
| Total Africa | 2,600 | 297 | 2,897 | Total Europe | 3,416 | 200 | 3,617 |
| Algeria | 156 | 2 | 158 | Albania | 164 | 2 | 166 |
| Angola | 78 | 8 | 86 | Armenia | 6 | 0 | 6 |
| Benin | 2 | 0 | 2 | Austria | 13 | 1 | 14 |
| Botswana | 2 | 0 | 2 | Azerbaijan | 3 | 0 | 3 |
| Burundi | 15 | 1 | 15 | Belgium | 34 | 3 | 37 |
| Cameroon | 35 | 3 | 38 | Bosnia and Herzegovina | 7 | 1 | 8 |
| Central African Republic | 15 | 1 | 16 | Bulgaria | 28 | 18 | 46 |
| Congo | 99 | 11 | 110 | Croatia | 7 | 0 | 7 |
| Congo, Democratic Republic of the | 21 | 0 | 21 | Cyprus | 35 | 0 | 35 |
| Egypt | 23 | 0 | 23 | Czech Republic | 74 | 8 | 82 |
| Equatorial Guinea | 1 | 0 | 1 | Denmark | 13 | 0 | 13 |
| Ethiopia | 73 | 4 | 77 | Estonia | 24 | 1 | 25 |
| Gabon | 2 | 0 | 2 | Finland | 4 | 0 | 4 |
| Gambia | 49 | 3 | 52 | France | 143 | 14 | 157 |
| Ghana | 158 | 24 | 181 | Georgia | 17 | 0 | 17 |
| Guinea | 18 | 1 | 19 | Germany | 88 | 7 | 95 |
| Guinea-Bissau | 2 | 0 | 2 | Gibraltar | 2 | 0 | 2 |
| Ivory Coast | 39 | 0 | 39 | Greece | 22 | 1 | 23 |
| Kenya | 54 | 11 | 65 | Hungary | 33 | 5 | 38 |
| Liberia | 23 | 4 | 27 | Iceland | 1 | 0 | 1 |
| Libyan Arab Jamahiriya | 16 | 0 | 16 | Irish Republic | 609 | 18 | 627 |
| Malawi | 10 | 3 | 13 | Italy | 69 | 4 | 73 |
| Mali | 2 | 2 | 4 | Kazakhstan | 1 | 1 | 2 |
| Mauritania | 4 | 0 | 4 | Kyrgyzstan | 3 | 1 | 4 |
| Mauritius | 15 | 1 | 16 | Latvia | 105 | 8 | 114 |
| Morocco | 47 | 0 | 47 | Lithuania | 296 | 12 | 308 |
| Mozambique | 2 | 1 | 3 | Macedonia | 9 | 0 | 9 |
| Namibia | 3 | 0 | 3 | Malta | 6 | 0 | 6 |
| Niger | 4 | 0 | 4 | Moldova | 30 | 2 | 32 |
| Nigeria | 651 | 115 | 765 | Netherlands | 94 | 7 | 101 |
| Rwanda | 15 | 0 | 15 | Norway | 6 | 0 | 6 |
| Senegal | 7 | 0 | 7 | Poland | 505 | 18 | 523 |
| Sierra Leone | 75 | 1 | 76 | Portugal | 190 | 12 | 202 |
| Somalia | 425 | 15 | 441 | Romania | 300 | 28 | 327 |
| South Africa | 119 | 32 | 151 | Russian Federation | 78 | 11 | 89 |
| Sudan | 38 | 1 | 39 | San Marino | 1 | 0 | 1 |
| Tanzania | 14 | 1 | 15 | Serbia and Montenegro | 76 | 1 | 77 |
| Togo | 5 | 1 | 6 | Slovakia | 41 | 5 | 46 |
| Tunisia | 18 | 0 | 18 | Slovenia | 5 | 1 | 6 |
| Uganda | 67 | 12 | 79 | Spain | 55 | 5 | 60 |
| Western Sahara | 2 | 0 | 2 | Sweden | 20 | 3 | 23 |
| Zambia | 9 | 2 | 11 | Switzerland | 5 | 1 | 6 |
| Zimbabwe | 185 | 38 | 223 | Turkey | 183 | 3 | 186 |
| | | | | Turkmenistan | 1 | 0 | 1 |
| | | | | Uzbekistan | 7 | 0 | 7 |
| Total Asia | 2,299 | 157 | 2,456 | Total Middle East | 586 | 9 | 595 |
| Afghanistan | 139 | 0 | 139 | Bahrain | 2 | 0 | 2 |
| Bangladesh | 176 | 4 | 180 | Iran | 203 | 6 | 208 |
| China | 431 | 48 | 479 | Iraq | 284 | 0 | 284 |
| Hong Kong | 9 | 0 | 9 | Israel | 31 | 2 | 32 |
| India | 337 | 8 | 344 | Jordan | 7 | 0 | 7 |
| Indonesia | 2 | 0 | 2 | Kuwait | 7 | 0 | 7 |
| Japan | 0 | 1 | 1 | Lebanon | 11 | 0 | 11 |
| Korea, Republic of | 5 | 0 | 5 | Oman | 2 | 0 | 2 |
| Malaysia | 24 | 9 | 33 | Saudi Arabia | 15 | 0 | 15 |
| Maldives | 0 | 1 | 1 | Syrian Arab Republic | 7 | 1 | 8 |
| Mongolia | 5 | 1 | 6 | United Arab Emirates | 5 | 0 | 5 |
| Myanmar | 4 | 0 | 4 | Yemen, Republic of | 13 | 0 | 13 |
| Nepal | 2 | 0 | 2 | | | | |
| Pakistan | 445 | 12 | 457 | Total Oceania | 49 | 3 | 52 |
| Philippines | 22 | 4 | 26 | Australia | 30 | 2 | 32 |
| Singapore | 4 | 2 | 6 | Fiji | 9 | 1 | 10 |
| Sri Lanka | 182 | 2 | 184 | French Southern Territories | 1 | 0 | 1 |
| Taiwan (Nationalist Chinese) | 2 | 0 | 2 | Kiribati | 1 | 0 | 1 |
| Thailand | 3 | 10 | 13 | New Zealand | 8 | 0 | 8 |
| Vietnam | 508 | 56 | 564 | | | | |
| Total Central and South America | 266 | 36 | 302 | Total West Indies | 1,174 | 115 | 1,289 |
| Argentina | 3 | 2 | 5 | Anguilla | 1 | 0 | 1 |
| Belize | 0 | 1 | 1 | Aruba | 2 | 0 | 2 |
| Bolivia | 14 | 2 | 16 | Bahamas | 3 | 0 | 3 |
| Brazil | 76 | 5 | 81 | Barbados | 30 | 7 | 37 |
| Chile | 7 | 0 | 7 | Bermuda | 5 | 0 | 5 |
| Colombia | 70 | 8 | 78 | Cuba | 3 | 0 | 3 |
| Costa Rica | 5 | 1 | 6 | Dominica | 5 | 1 | 6 |
| Ecuador | 9 | 1 | 10 | Dominican Republic | 4 | 0 | 4 |
| French Guiana | 1 | 1 | 2 | Grenada | 11 | 4 | 15 |
| Guatemala | 2 | 0 | 2 | Haiti | 1 | 0 | 1 |
| Guyana | 35 | 6 | 41 | Jamaica | 985 | 70 | 1,055 |
| Honduras | 1 | 0 | 1 | Montserrat | 20 | 1 | 21 |
| Mexico | 18 | 7 | 25 | Netherlands Antilles | 5 | 3 | 8 |
| Nicaragua | 1 | 0 | 1 | St Kitts and Nevis | 2 | 0 | 2 |
| Panama | 1 | 0 | 1 | St Lucia | 29 | 19 | 48 |
| Peru | 4 | 1 | 5 | St Vincent and the Grenadines | 14 | 2 | 16 |
| South Georgia & South Sandwich Islands | 1 | 0 | 1 | Trinidad and Tobago | 52 | 8 | 61 |
| Suriname | 4 | 0 | 4 | Virgin Islands | 2 | 0 | 2 |
| Uruguay | 2 | 0 | 2 | | | | |
| Venezuela | 11 | 1 | 12 | Total Other | 5 | 0 | 5 |
| Total North America | 116 | 20 | 137 | | | | |
| Canada | 27 | 3 | 30 | | | | |
| United States | 89 | 17 | 107 | | | | |

Data Sources and Quality
These figures have been drawn from administrative IT systems. Care is taken when processing and analysing the returns, but the detail collected is subject to the inaccuracies inherent in any large scale recording system, and so although shown to the last individual, the figure may not be accurate to that level.