

EC Type Examination Certificate Number: **UK/ 0120/ SGS0037**

**Itron**

Langer Road  
Felixstowe  
Suffolk  
IP11 2ER

Instrument Identification:

**ACE 4000 GSS BS & ACE 4000 GSMM BS**  
**Single Phase, Credit, Active Import/ Export, Multi-rate, Electricity Meter**

Instrument Traceable Number

**UK/ 0120/ SGS0037**

has been assessed and certified as meeting the requirements of

**EC Directive 2004/22/EC**  
**on Measuring Instruments Annex B**

It is certified that the manufacturer's technical design and specimen for the above instrument has been examined and, based on the evidence submitted, it is considered that the instrument conforms to the requirements of MI-003 of EC Directive 2004/22/EC.

This certificate is issued in conjunction with a certificate covering the product verification as required in Annex D or Annex F.

This certificate is valid for 10 years from 11<sup>th</sup> May 2009 until 10<sup>th</sup> May 2019  
Issue 4

Certification is based on report number(s)

EMA124715 dated 27<sup>th</sup> March 2009

EMA125418 dated 11<sup>th</sup> May 2009

Notified Body Number 0120

Authorised Signature

Mr J Weaver



Notified Body

SGS United Kingdom Ltd, 202B Worle Parkway, Weston-super-Mare, BS22 6WA UK

t +44 (0)1934 522917 f +44 (0)1934 522137 [www.sgs.com](http://www.sgs.com)

Contact Address

SGS United Kingdom Ltd, Unit 10, South Industrial Estate, Bowburn, Durham, DH6 5AD UK

t +44 (0)191 377 2000 f +44 (0)191 377 2020 [www.sgs.com](http://www.sgs.com)

EC Type Examination Cert.

**CE**  
**0120**

## Approval Annex for EC Type Examination Cert. No. UK/ 0120/ SGS0037

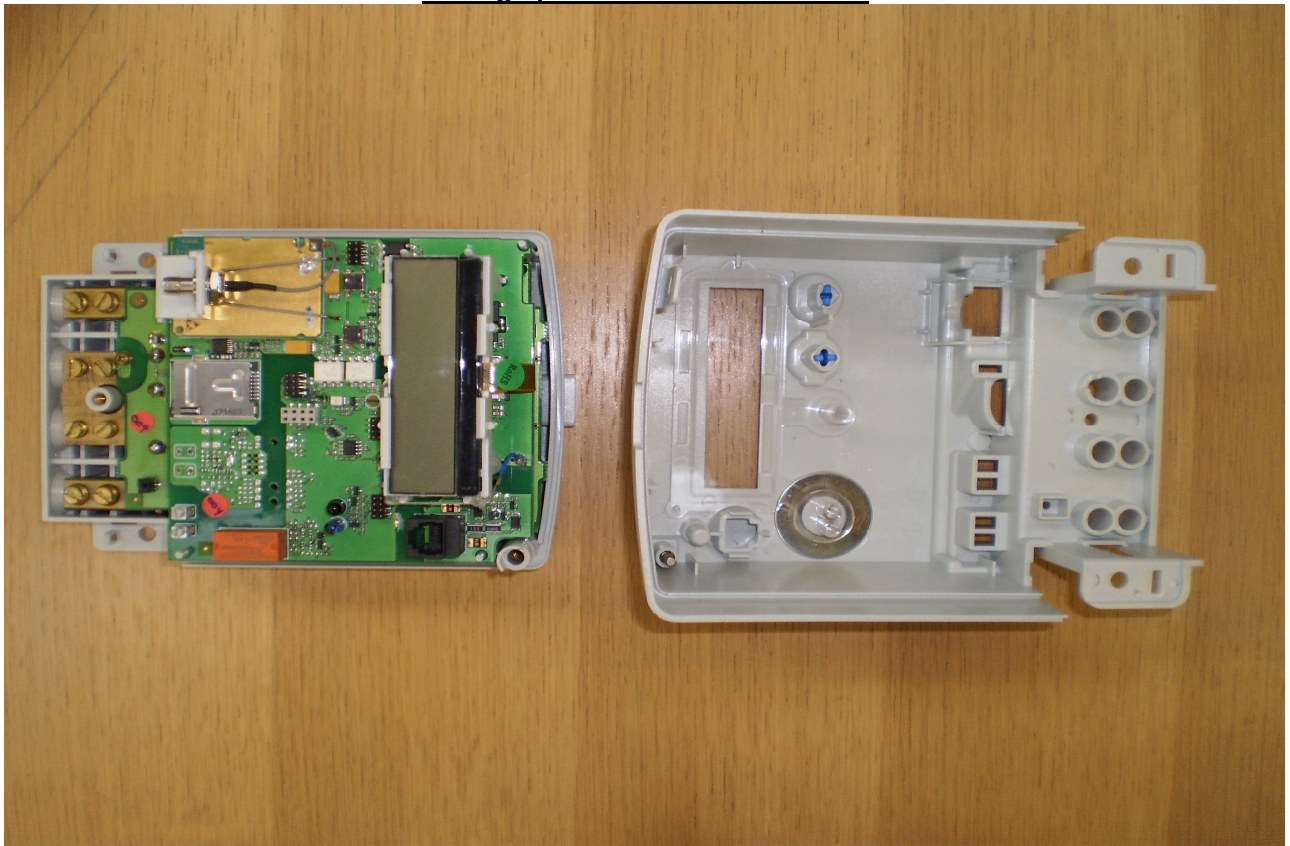
<b>Manufacturer</b>	:	Itron
<b>Type of Meter(s)</b>	:	ACE 4000 GSS BS & ACE 4000 GSMM BS
<b>Description of Meter</b>	:	Single Phase, Credit, Active Import/ Export, Multi-rate, Electricity Meter
<b>Accuracy Class (es)</b>	:	A or B (kWh)
		<b>Software Version No's</b> : v02.05 v02.08 v02.09 <b>Location</b> : LCD
<b>Top PCB Version No's</b>	:	Rev AE A202754AE Rev AG A202754AG Rev AH A202754AH
<b>Bottom PCB Version No's</b>	:	Rev AB A203411AB Rev AD A203411AD
<b>Meter Location</b>	:	Indoor
<b>Integrity of Meter</b>	:	Inaccessible without breaking seals
<b>Type of Circuit</b>	:	1p2w
<b>Current Range (A)</b>	:	0,5-10(100)A
		<b>Sealing Type</b> : Wire & Crimp <b>Temperature Range</b> : -40°C to 70°C <b>Frequency</b> : 50Hz <b>Voltage Range (V)</b> : 230V
		<b>Bill Of Materials No</b> : 'ACE4000 GSMM GSS BS Master Central BOM'

**Photograph of front of meter**

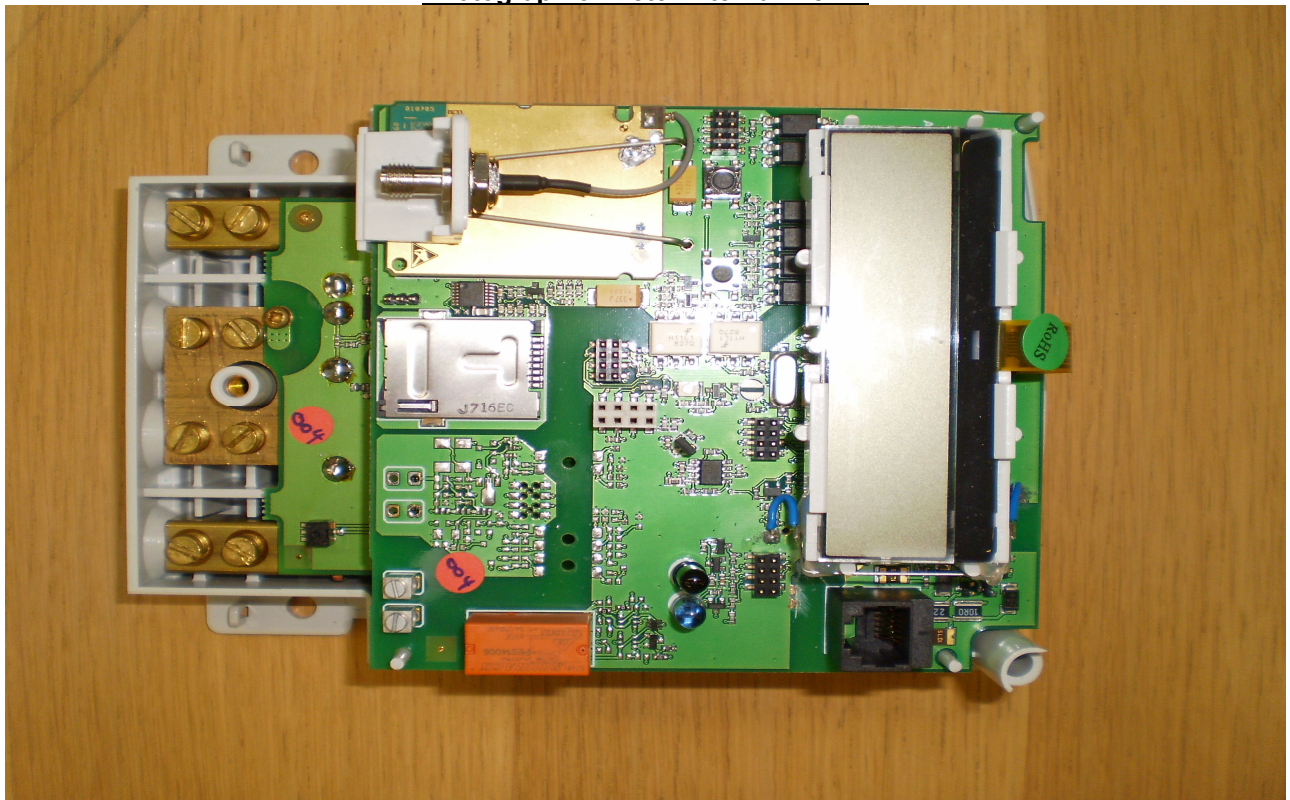




**Photograph of meter Internal View 1**

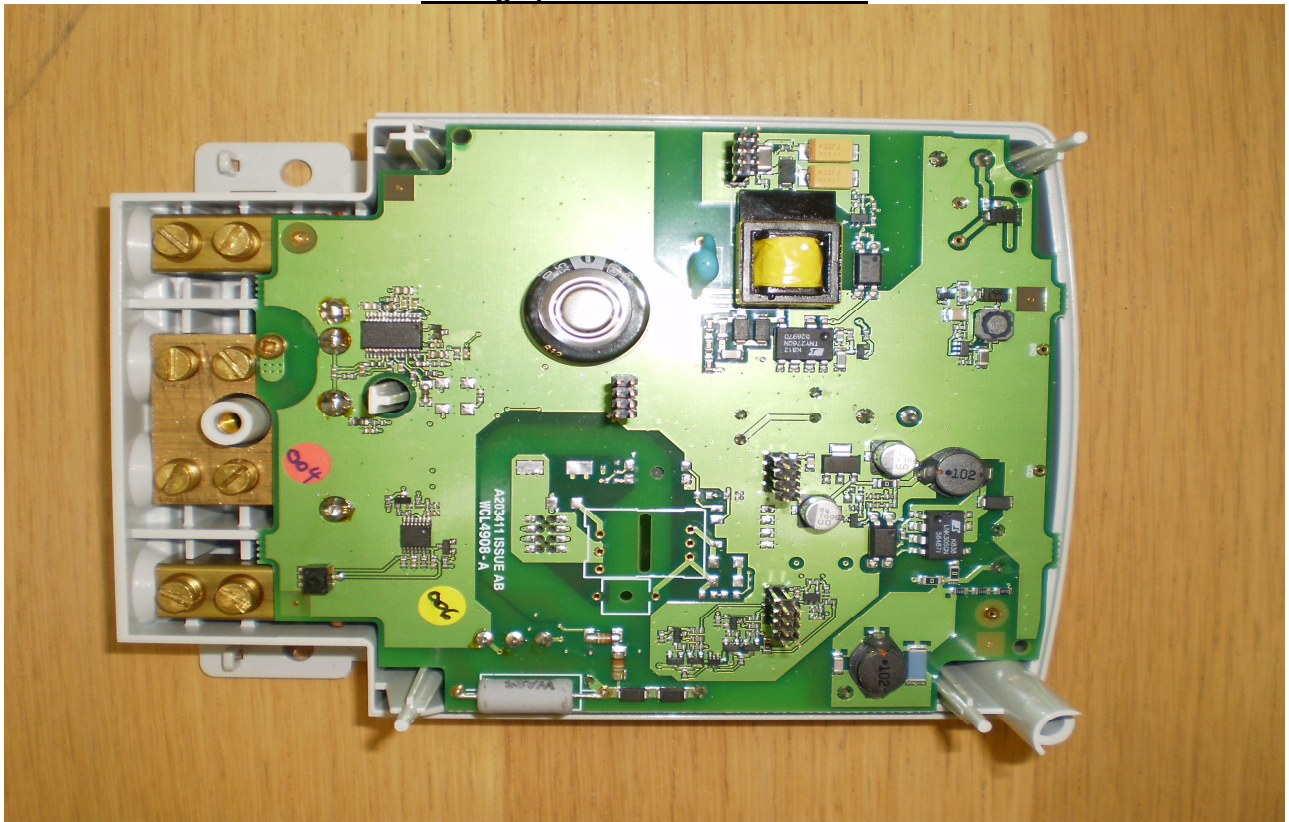


**Photograph of meter Internal View 2**

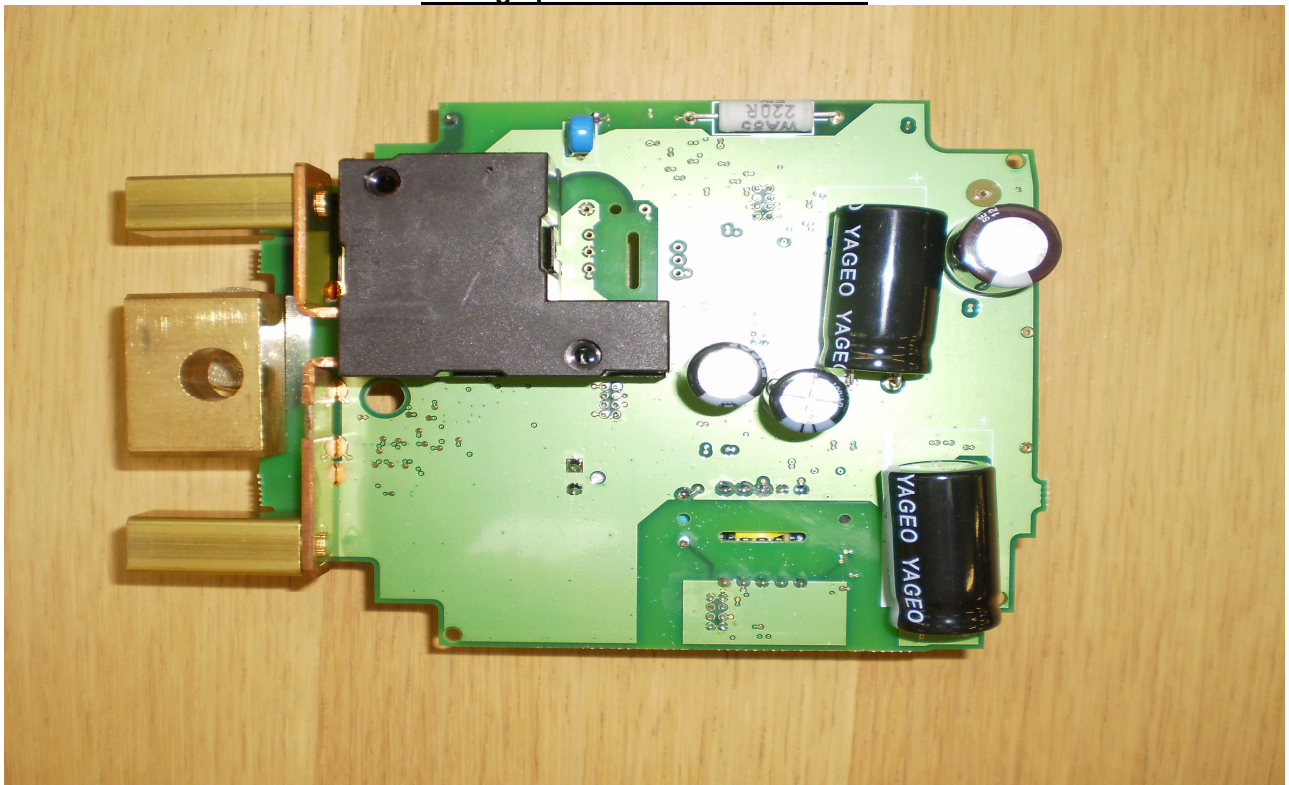




**Photograph of meter Internal View 3**



**Photograph of meter Internal View 4**



Product Variant Identification Details:

Type Designation	Description of meter
GS	<b>Model Type:</b> = GPRS Single Phase Meter
3	<b>Model Status:</b> = Mark 3
XXX	<b>Customer:</b> = Reserved for customers see <a href="http://rcsweb/qjp58/index.html">http://rcsweb/qjp58/index.html</a>
C	<b>Range &amp; Terminals:</b> = 230V, 0.5-10(100)A, BS Terminal Arrangement
0	<b>Cover Option:</b> = Cover with 1 Button, with NTA8130 RJ-11 Port
1	<b>Cover Option:</b> = Cover with 1 Button, no NTA8130 RJ-11 Port
2	<b>Cover Option:</b> = Cover with 2 Button, with NTA8130 RJ-11 Port
3	<b>Cover Option:</b> = Cover with 2 Button, no NTA8130 RJ-11 Port
A	<b>MBUS:</b> = No MBUS fitted
B	<b>MBUS:</b> = MBUS fitted
0	<b>Internal Aerial:</b> = N/A
0	<b>Internal Aerial:</b> = Internal aerial not fitted
0	<b>Internal Aerial:</b> = Internal aerial fitted - SMA Connector
0	<b>Metering Mode:</b> = Ferraris
1	<b>Metering Mode:</b> = Static – Bidirectional
2	<b>Metering Mode:</b> = Antifraud – Unidirectional
1	<b>Internal Contactor:</b> = Phase Internal Contactor Only Fitted (Neutral Bypass Block Fitted)
0	<b>TC65 Program:</b> = Actaris Vantage compatible
1	<b>TC65 Program:</b> = 3rd party software
2	<b>TC65 Program:</b> = Unprogrammed
1	<b>Aux Options (1):</b> = Bit 0 = With PDM
2	<b>Aux Options (1):</b> = Bit 1 = With MFD Enabled
4	<b>Aux Options (1):</b> = Bit 2 = With COD Enabled
8	<b>Aux Options (1):</b> = Bit 3 = With NTA 8130 RJ-11 Port <i>Note:- RJ11 port must be fitted above</i>
0	<b>Aux Options (2):</b> = No Relay Fitted, No Pulse Output Fitted
1	<b>Aux Options (2):</b> = No Relay Fitted, Pulse Output Fitted
2	<b>Aux Options (2):</b> = With 5A Relay (NC), No Pulse Output Fitted
3	<b>Aux Options (2):</b> = With 5A Relay (NC), Pulse Output Fitted
0	<b>Metrology:</b> = Class A
5	<b>Metrology:</b> = Class B

Modifications to the meter(s) described according to approval No. **UK/ 0120/ SGS0037** must be notified to the issuing body to confirm the meter(s) continuing compliance to the relevant pattern approval standard(s).