



25 July 2013

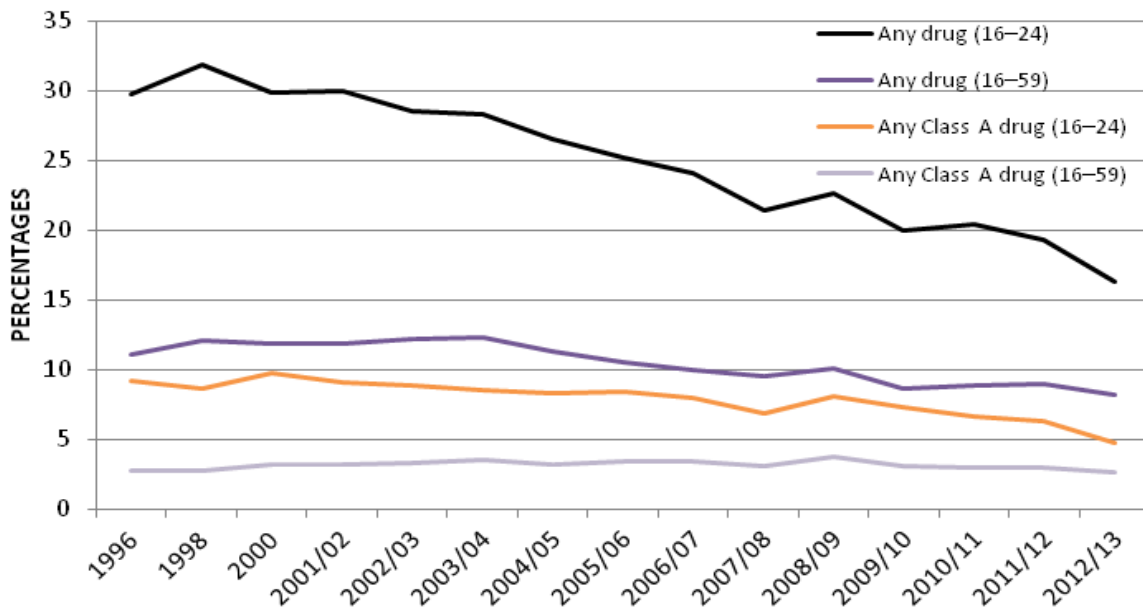
Statistical News Release – Drug Misuse: Findings from the 2012/13 Crime Survey for England and Wales

The latest National Statistics on illicit drug use in England and Wales are released today based on self reported data from the 2012/13 Crime Survey for England and Wales (CSEW).

Extent and trends in illicit drug use among adults aged 16 to 59

- According to the 2012/13 CSEW, an estimated 8.2% of adults aged 16 to 59 (around 2.7 million people) had used **an illicit drug** in the last year, a fall compared with 2011/12 (8.9%).
- An estimated 2.6% of 16 to 59 year olds (around 850,000 people) had used a **Class A drug** in the last year, again a fall from the 2011/12 survey (3.0%).

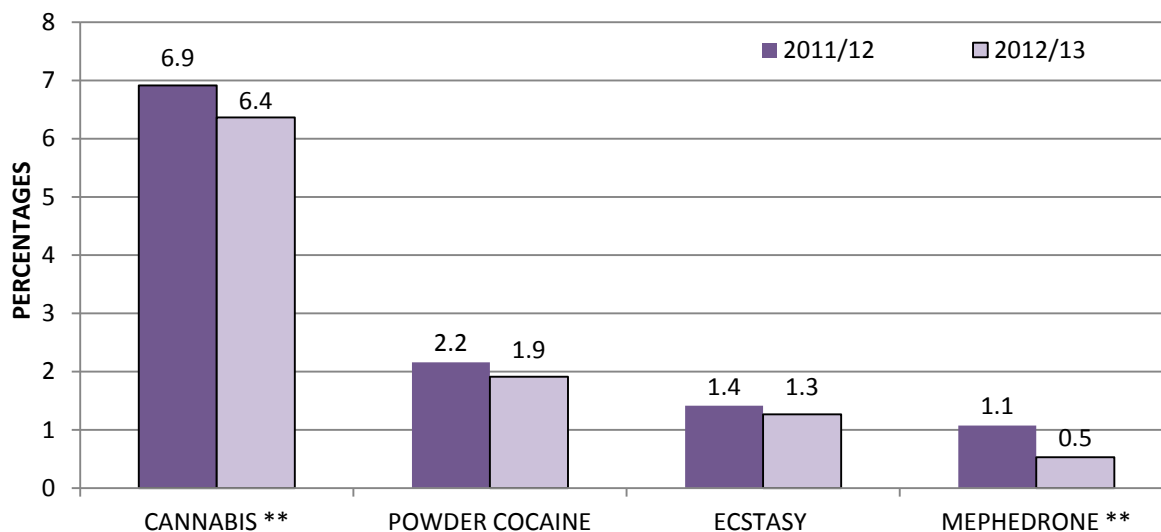
Proportion of 16–59 year olds taking drugs in the last year (1996 to 2012/13 CSEW)



- As in previous years, **cannabis** was the most commonly used type of drug in the last year (6.4% of adults, around 2.0 million people) followed by **powder cocaine** (1.9%, around 0.6 million).

Changes in the proportion of 16–59 year olds taking individual drugs in the last year, 2011/12 and 2012/13 CSEW

(** indicates a statistically significant difference)



- Last year drug use remained more prevalent among 16 to 24 year olds (16.3%) – almost double the proportion of this age group had used drugs in the last year compared with the 16-59 year old age group. See 'Extent and trends in illicit drug use among adults' section.

Other findings from 2012/13 CSEW

- Frequency of drug use:
 - 2.8% of adults aged 16 to 59 were defined as frequent drug users (having taken any illicit drug more than once a month on average in the last year). This is lower than 3.3% recorded in the 2011/12 survey.
 - Frequent drug use among young people aged 16 to 24 was almost twice as high (5.1%) as for adults overall.
- Drug use by age and lifestyle factors:
 - Use of any illicit drug was highest among 16 to 24 year olds with cannabis being the most commonly taken drug.
 - Class A drug use was highest among 20 to 29 year olds (5.7% of 20 to 24 year olds and 5.4% of 25 to 29 year olds had taken Class A drugs in the last year).
 - Men continue to report higher levels of drug use than women; this has been the case every year since the first collection of this data in the 1996 survey.
 - Levels of drug use increased with increasing frequency of alcohol consumption or visits to nightclubs or pubs.

The full release contains the following sections:

- Extent and trends of illicit drug use among adults (including 16 to 24 year olds and new CSEW measures of drug use)
- Frequency of drug use
- Drug use by personal, household, area and lifestyle factors
- Accessibility of drugs
- Attitudes towards the acceptability and safety of drug-taking

Notes to editors

1. 'Drug Misuse: Findings from the 2012/13 Crime Survey for England and Wales' is available online via the UK National Statistics Publication Hub and Gov.uk.

<https://www.gov.uk/government/publications/drug-misuse-findings-from-the-2012-to-2013-csew>

As well as publishing in HTML format, a pdf document is provided which will enable users to print out all HTML pages from one source document (all tables are solely available online).

2. 'Smoking, drinking and drug use among young people in England – 2012' is also being released on 25 July 2013, by the Health and Social Care Information Centre and is available via on their website as well as the UK National Statistics Publication Hub.

www.hscic.gov.uk/pubs/sdd12

3. A 'User Guide to Drug Misuse' is also available, providing further information about the drug use measures.

<https://www.gov.uk/government/publications/user-guide-to-drug-misuse-declared-findings-from-the-crime-survey-for-england-and-wales>

4. The Crime Survey for England and Wales was formerly the British Crime Survey. The name of the survey was changed to better reflect the coverage of the survey.

5. While responsibility for the Crime Survey for England and Wales transferred to the Office for National Statistics on 1 April 2012, the Home Office has retained responsibility for analysis and publication of this Drug Misuse publication.

For all press enquiries, please contact the Home Office Press Office who will liaise with Home Office Statistics Unit:

Newsdesk - **020 7035 3535**

Monday - Thursday: 07:00 – 21:00

Friday: 07:00 – 20:00

Emergency media calls, out-of-hours: 020 7035 6434

Please note: the press office deals with enquiries from the media only. Members of the public should phone **020 7035 4848**.