

River Tame Flood Risk Management Strategy

Environmental Report
May 2009

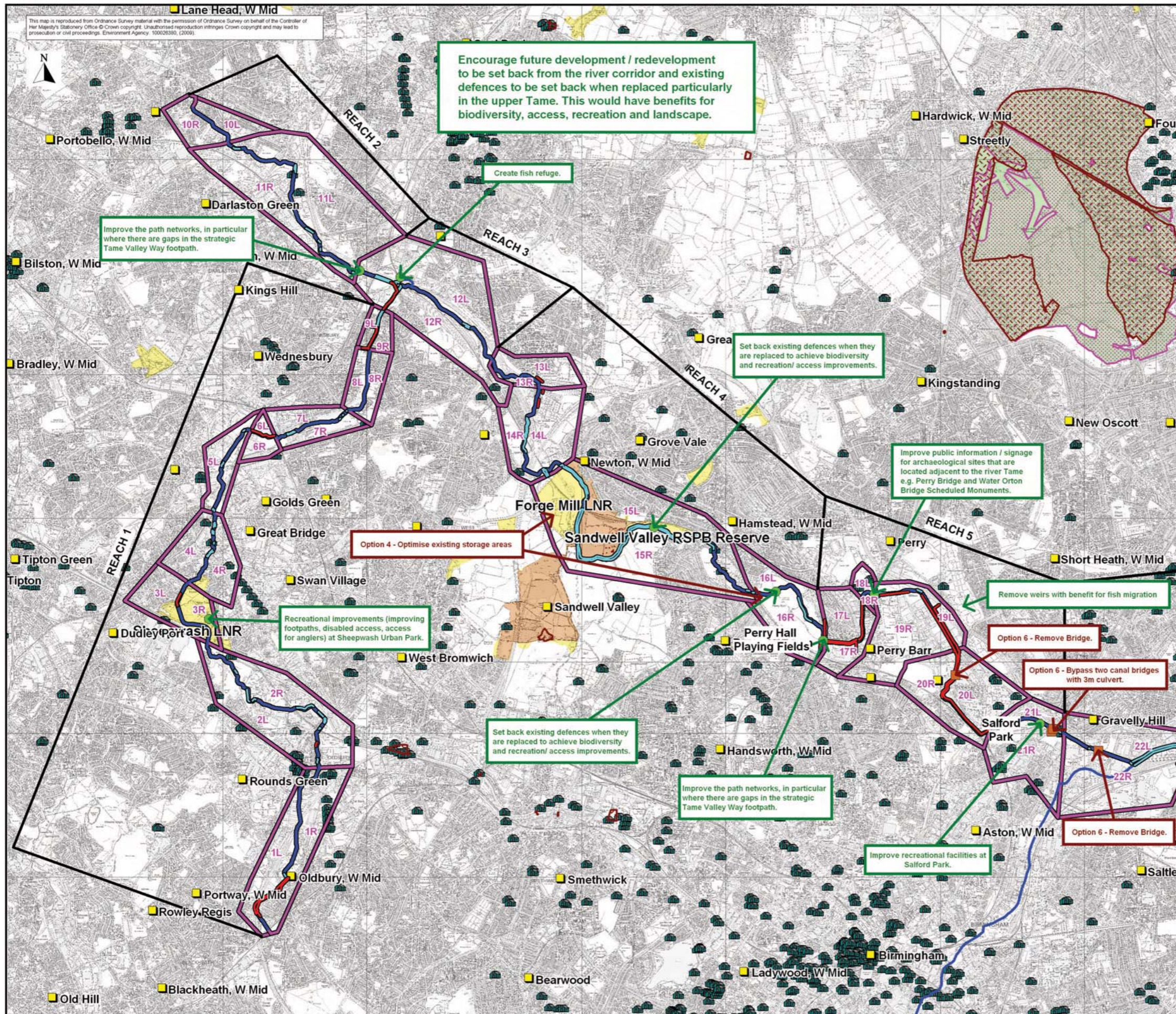
Contents

APPENDIX E: Indicative Landscape Plans

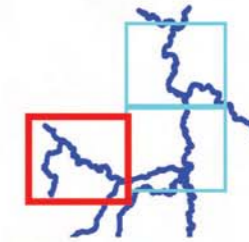


APPENDIX E: Indicative Landscape Plans

[Page left intentionally blank]



Location Plan :



Legend :

- Enhancement Opportunity
- Option Improvements
- Reach
- Flood Cell
- Key Locality
- Watercourse
- Sites of Special Scientific Interest (SSSI)
- Special Areas of Conservation (SAC)
- Local Nature Reserve
- National Nature Reserve
- RSPB Reserve
- Listed Buildings
- Record of Schedule Monument
- Option 3 Defences (weir defences to current standard of protection)
- Option 6 Defences (localised improvements to defences - raise existing defences or construct new defences)

Rev.	By	Date	Description

Halcrow
www.halcrow.com

Lyndon House
62 Hagley Road
Edgbaston
Birmingham
B16 8PE

Environment Agency

Sentinel House
Wellington Crescent
Fradley Park
Lichfield
WS13 8RR

Project :

RIVER TAME STRATEGY

Drawing :

**RIVER TAME
INDICATIVE LANDSCAPE PLANS**

Drawn By : A J Bryan Date : 07 January 2009

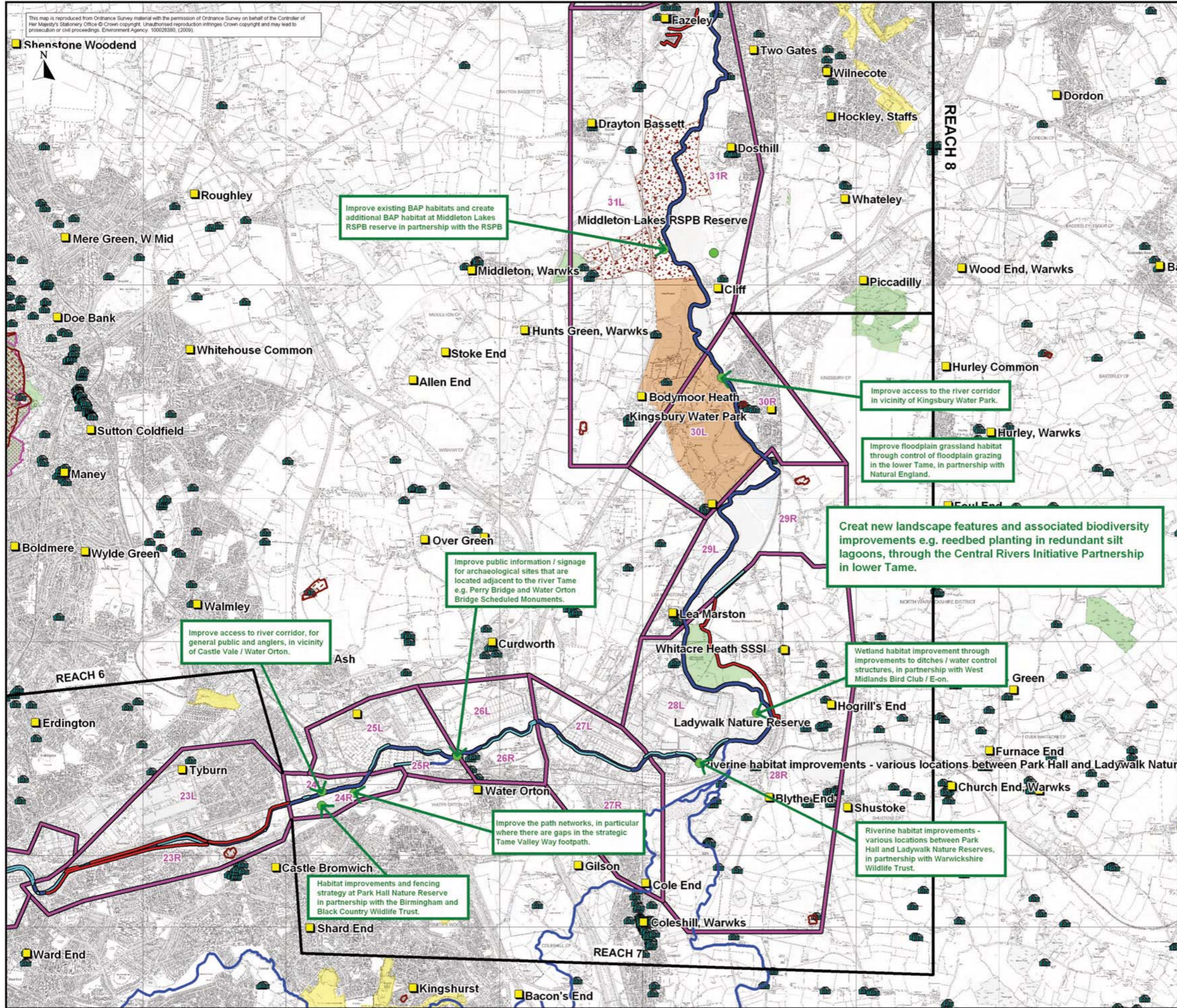
Checked By : A Kowalski Date : 07 January 2009

Approved By : J R Parkin Date : 07 January 2009

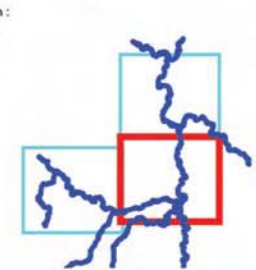
Drawing No. : Revision : Status :

WB/RTFM/DRAWING - 003 - FINAL

Drawing Scale : 1:50,000 Sheet No. : 1 of 3 Plot Scale : 1:1 @ A3



This map is reproduced from Ordnance Survey material with the permission of Ordnance Survey on behalf of the Controller of Her Majesty's Stationery Office © Crown copyright. Unauthorised reproduction infringes Crown copyright and may lead to prosecution or civil proceedings. Environment Agency, 1000/23380, (2009)



Location Plan :

Legend :

- Enhancement Opportunity
- Reach
- Flood Cell
- Key Locality
- Watercourse
- Sites of Special Scientific Interest (SSSI)
- Special Areas of Conservation (SAC)
- Local Nature Reserve
- National Nature Reserve
- RSPB Reserve
- Listed Buildings
- Record of Schedule Monument
- Option 3 Defences
(Mainline defences to current standard of protection)
- Option 6 Defences
(Localised improvements to defences - raise existing defences or construct new defences)

Rev.	By	Date	Description

Halcrow
www.halcrow.com

Lyndon House
62 Hagley Road
Edgbaston
Birmingham
B16 8PE

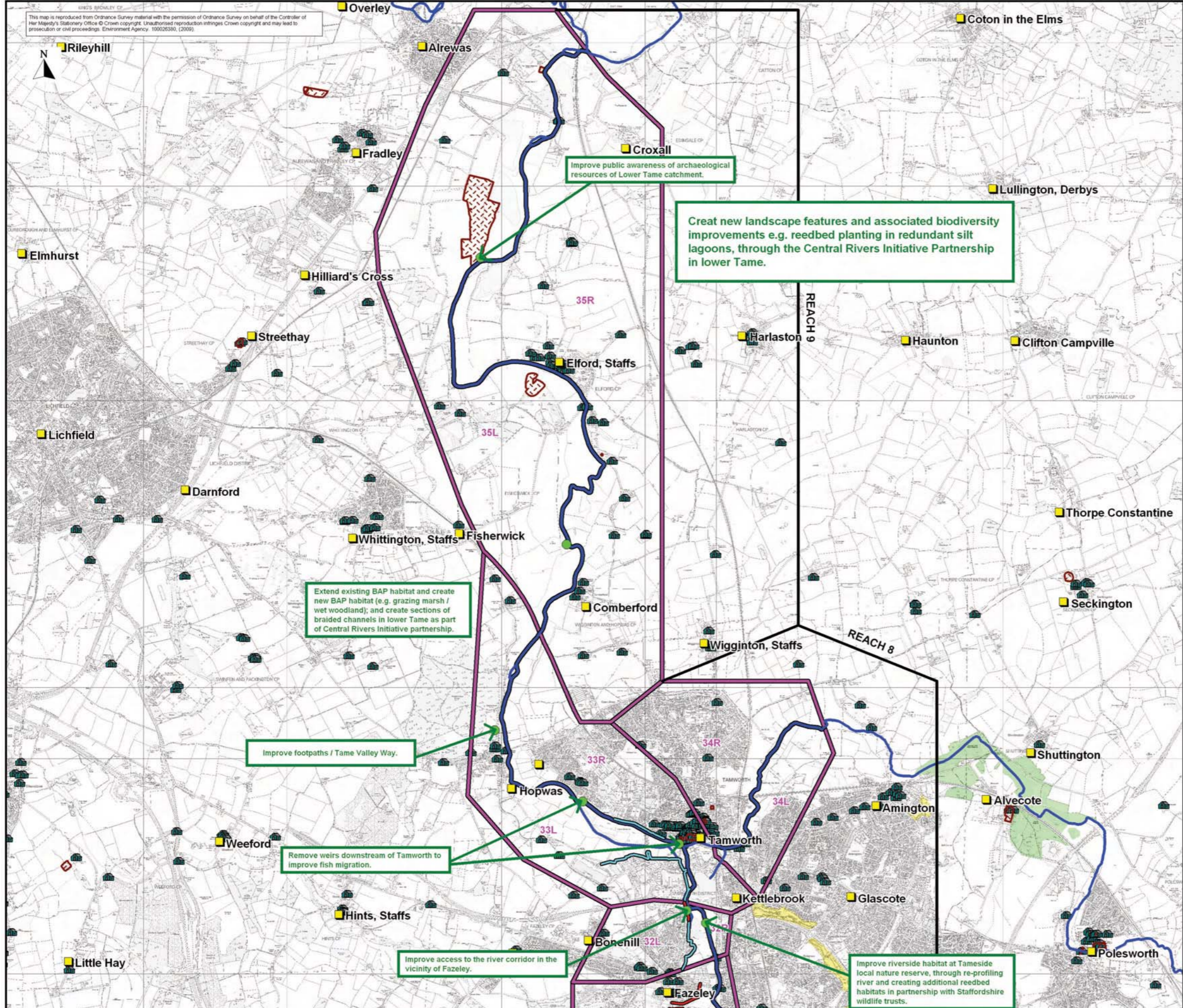
Environment Agency

Sentinel House
Wellington Crescent
Fradley Park
Lichfield
WS13 8RR

Project : **RIVER TAME STRATEGY**

Drawing : **RIVER TAME INDICATIVE LANDSCAPE PLANS**

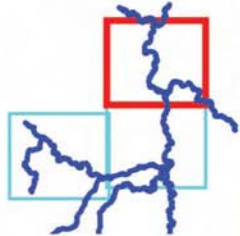
Drawn By : A J Bryan	Date : 07 January 2009
Checked By : A Kowalski	Date : 07 January 2009
Approved By : J R Parkin	Date : 07 January 2009
Drawing No. : WB/RTFM/DRAWING - 003	Revision : - Status : FINAL
Drawing Scale : 1:50,000	Sheet No. : 2 of 3 Plot Scale : 1:1 @ A3



This map is reproduced from Ordnance Survey material with the permission of Ordnance Survey on behalf of the Controller of Her Majesty's Stationary Office © Crown copyright. Unauthorised reproduction infringes Crown copyright and may lead to prosecution or civil proceedings. Environment Agency, 100026380, (2009)



Location Plan :



Legend :

- Enhancement Opportunity
- Reach
- Flood Cell
- Key Locality
- Watercourse
- Sites of Special Scientific Interest (SSSI)
- Special Areas of Conservation (SAC)
- Local Nature Reserve
- National Nature Reserve
- RSPB Reserve
- Listed Buildings
- Record of Schedule Monument
- Option 3 Defences (Maintain defences to current standard of protection)
- Option 6 Defences (Localised improvements to defences - raise existing defences or construct new defences)

Rev.	By	Date	Description

Halcrow
www.halcrow.com

Lyndon House
62 Hagley Road
Edgbaston
Birmingham
B16 8PE

Environment Agency

Sentinel House
Wellington Crescent
Fradley Park
Lichfield
WS13 8RR

Project :
RIVER TAME STRATEGY

Drawing :
RIVER TAME INDICATIVE LANDSCAPE PLANS

Drawn By : A J Bryan	Date : 07 January 2009
Checked By : A Kowalski	Date : 07 January 2009
Approved By : J R Parkin	Date : 07 January 2009
Drawing No. : WB/RTFM/DRAWING - 003	Revision : - Status : FINAL
Drawing Scale : 1:50,000	Sheet No. : 3 of 3 Plot Scale : 1:1 @ A3



**Would you like to find out more about us,
or about your environment?**

Then call us on

08708 506 506 (Mon-Fri 8-6)

Weekday Daytime calls cost 8p plus up to 6ppm from BT Weekend Unlimited.
Mobile and other providers' charges may vary.

email

enquiries@environment-agency.gov.uk

or visit our website

www.environment-agency.gov.uk

incident hotline 0800 80 70 60 (24hrs)

floodline 0845 988 1188



Environment first: This publication is printed on paper made from 100 per cent previously used waste. By-products from making the pulp and paper are used for composting and fertiliser, for making cement and for generating energy.