



CONSULTING FOR A MASTER PLAN STAKEHOLDER PRESENTATION

Brigadier Piers Hankinson MBE

Commander 43 (Wessex) Brigade

Alistair Cunningham

Director Economic Development & Planning, Wiltshire Council

Stephen Harness

Senior Town & Country Planner, DIO

David Alderson

Town Planner

Q & A

[POST PRESENTATION NOTE: The content of some pages has been adjusted and some pages have been added to provide further information and clarification in accordance with questions asked and responses given at the original presentation made on 29th January 2014]

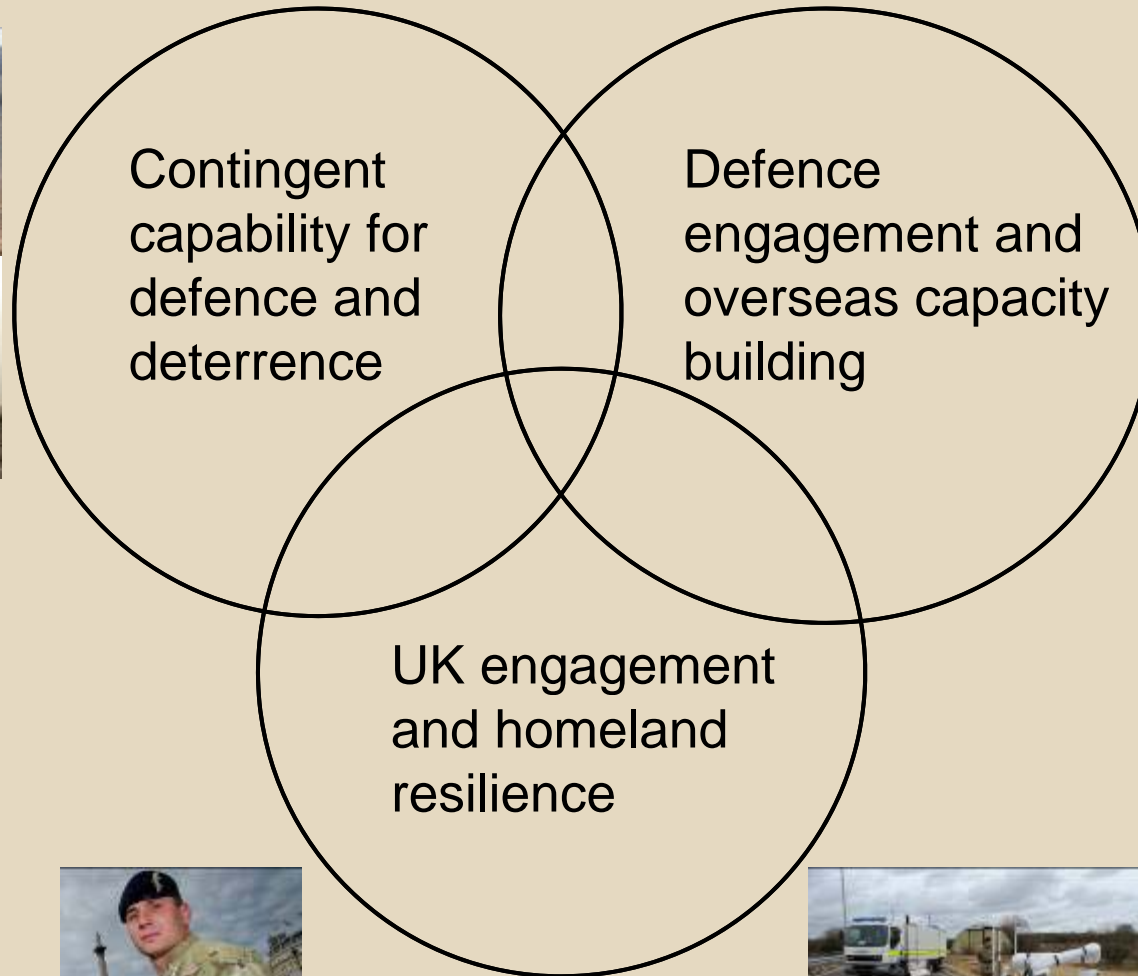


Brigadier Piers Hankinson MBE

Comd 43 (Wessex) Bde



The Core Functions of the Future Army





Army 2020



**Regular
Army**

82,000



**Integrated
Force**

112,000



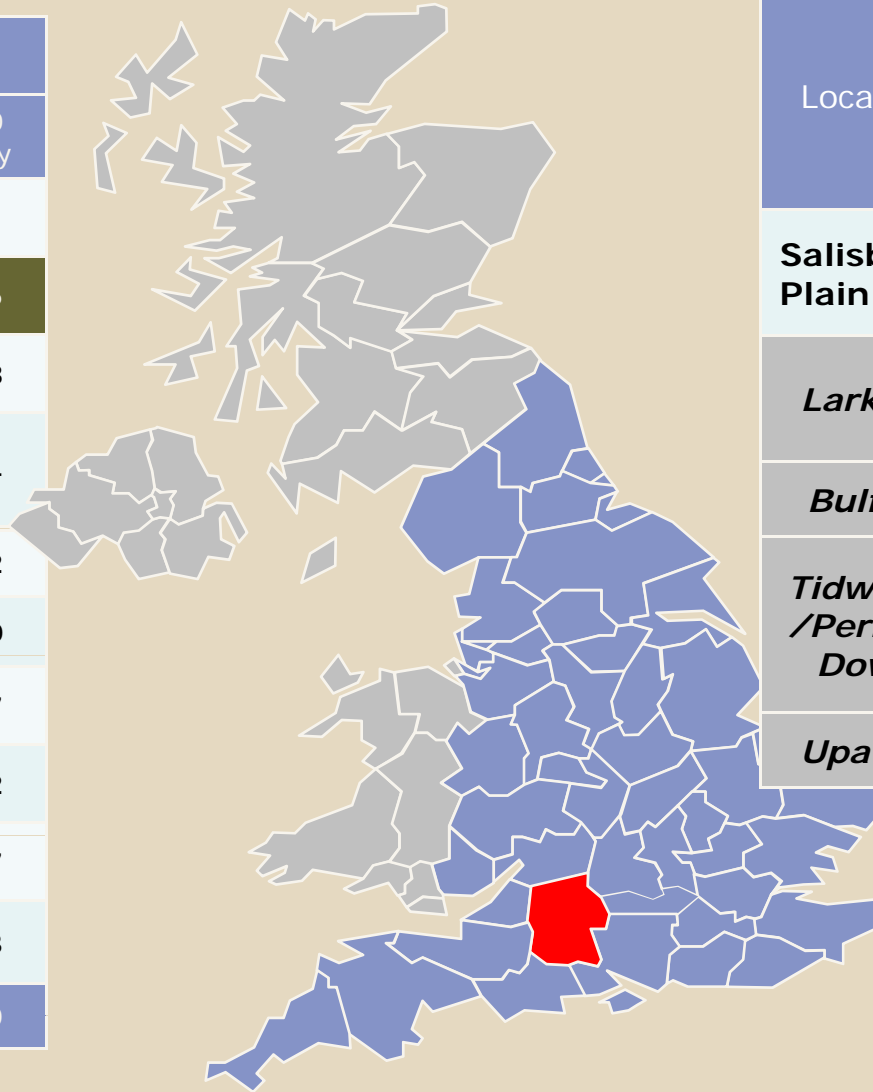
Reserve

30,000



Regular Army Regional Summary: England

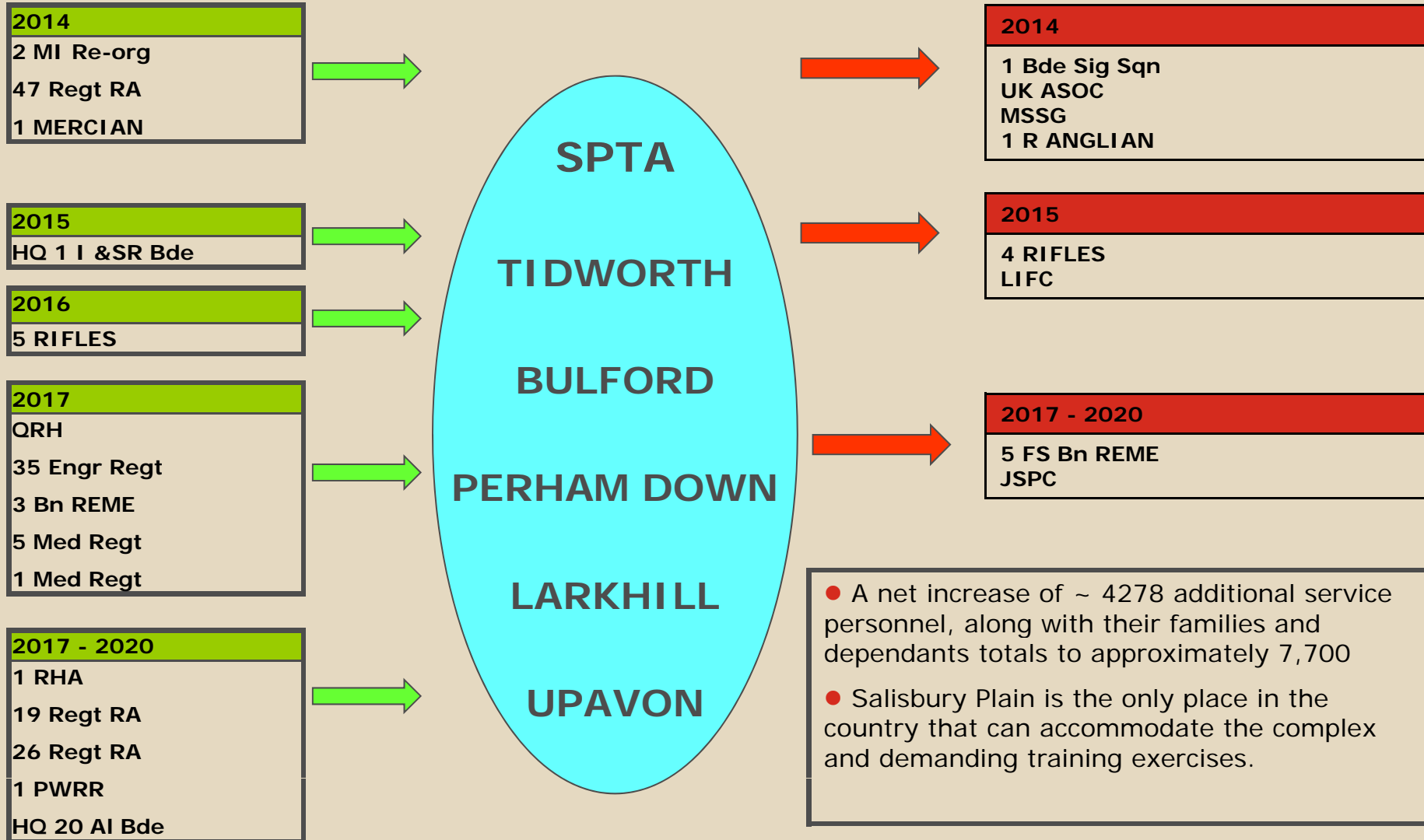
Location	Outcome	
	Change	A2020 Liability
Aldershot	+745	4,131
Salisbury Plain	+4278	13336
North East England	-1,357	7,318
Eastern England	-36	9,344
Southern England	+322	5,102
Greater London	-191	3,190
South East England	-823	1,197
North West England	+106	1,382
West Midlands	+1,170	3,107
South West England	-44	4,033
Total	+7138	52140



Location	Outcome	
	Change	A2020 Liability
Salisbury Plain	+4278	13336
<i>Larkhill</i>	<i>+2053</i>	<i>3955</i>
<i>Bulford</i>	<i>+735</i>	<i>3453</i>
<i>Tidworth /Perham Down</i>	<i>+1236</i>	<i>5397</i>
<i>Upavon</i>	<i>+254</i>	<i>531</i>



Salisbury Plain Training Area (SPTA)



[POST PRESENTATION NOTE: The figures in the above table have been corrected following checks carried out on information received from units in Germany]

Army Rebasing - Involving Local Communities

Alistair Cunningham
Director Economic
Development and Planning



Presentation Outline

- Briefing 27 November 2013
- Work since then
- Present Position
- What more needs be done
- Way Ahead
- Formal Consultation Plans

Briefing 27 November 2013 - Recap

- A significant increase in (Salisbury Plain) army personnel by 2018
- Many troops will be accompanied by their families, increasing population further
- c. £800 million MOD investment in Service Family Accommodation (SFA), single living accommodation (SLA) and base technical facilities, the training estate
- Early moves within UK will start mid 2014, with a some large units due to move out prior to 2017
- Whilst there were “No Plans’ as Stakeholders’ views were needed to help formulate them, the land available for SFA was shared with communities for comment

Work Since Then

- Stakeholders' views collated
- Constraints/opportunities identified by statutory authorities etc
- DIO has drawn up initial plans
- DIO critical review of SFA requirement for present position and for Army Basing changes
- Continued joint working between Wiltshire Council & MOD
- Assessing implications for the range of services needed to meet increased numbers
- Continuing dialogue with stakeholders

Present position

- DIO plans, especially in respect of SFA, are to be presented
- Need for some local short-term housing purchases
- Potential SFA sites have been narrowed down
- There is still time to shape the plans, both today and during the formal consultation period AND when MOD submits its planning applications

What more needs to be done

- Further refinement of SFA sites by DIO
- Consider the wider MOD development in greater detail (training estate and within bases)
- Look for opportunities to share facilities with MOD
- Plan for increase in service provision
- Consider opportunities to provide employment

Way Ahead

- February 19 to April 1 2014 - Formal Consultation
- Now to May 2014 - Environmental Assessments
- May 2014 - Masterplan to be completed by DIO
- Summer 2014 - Masterplan to be put before Wiltshire Council's Strategic Planning Committee
- Late summer 2014 - Planning Applications submitted for SFA, other MOD facilities in the bases and the training estate
- From June 2016 - Build within bases and SFA starts, to meet moves from Germany during 2017 to 2019

Formal Consultation - What is Planned

- Exhibitions
- Opportunity for all to comment on emerging DIO plans
- Combined Area Board for Army Basing
- Meetings / workshops with Statutory Authorities
- Meetings with local schools
- Meetings with health providers
- Engagement with businesses
- Publicity through newsletters, dedicated MOD and Wiltshire Council web-pages, broadcasts & social media



Defence
Infrastructure
Organisation

Army Basing Plan and the Salisbury Plain Area

Stephen Harness

DIO Senior Town & Country Planner



Army Basing Programme – Salisbury Plain Overview

Background:

- March 2013 Secretary of State for Defence announced Army Regular Basing Plan and the need to relocate British Troops from Germany back to the UK, whilst reconfiguring units in the UK for their future role.
- Between 2014 and 2019 approximately 4,000 additional military personnel will relocate to the Salisbury Plain Area raising the total number to 13,000 by 2018.
- New development needed at Tidworth, Bulford, Perham Down, Larkhill and Upavon.
- Up to 1,400 new homes to accommodate service families.

Approach:

- DIO and the Army liaising closely with the Planning & Highway Authorities and Statutory Bodies: Requirement to prepare a Masterplan to cover the strategic issues across the Plain.
- Heading towards public exhibitions on the Master Plan from 19 Feb to 1 April 2014.
- Consulted on the approach last year – David Alderson will take you through the feedback received, the approach that has been taken and the findings that will be incorporated into the consultation.
- The Master Plan once completed will set the context for any applications to the Planning Authority.

Questions: We have a number of specialists available today to answer questions at the end of the presentation, they will introduce themselves and their role when they speak.



Defence
Infrastructure
Organisation

Army Basing Plan and the Salisbury Plain Area

David Alderson

Town Planner



Army Basing Programme – Salisbury Plain Masterplan

Presentation Outline

- Key issues raised at the November/December Consultation last year
- Number of SFA Required
- Methodology of Site Selection Process
- Preferred Sites/Potential Sites
- Transport Impact
- Socio-Economics
- Internal Camp Development
- Training
- Future Public Consultation
- Timeline
- Q&A

Army Basing Programme – Salisbury Plain Masterplan

Key Issues raised at November/December Consultation

- Traffic Impact on the Strategic Road Network – SFA should be located as close to unit locations as possible
- Impact on Education and Medical Infrastructure
- Development of SFA at Netheravon and Upavon?
- Support for a cycle path linking settlements around Salisbury Plain
- Larkhill – concerns about coalescence with Durrington
- Larkhill - Some support for development on brownfield land south of the Packway
- Objections against development around Bulford Village - impact on the adjoining Conservation Area, affect rural nature of area

Army Basing Programme – Salisbury Plain Masterplan

Number of SFA Required

The total number of SFA required is 1,380 and the proposal for the supply of these houses is:

Number of SFA	
199	Purchase commercial stock, this number of SFA is required by April 2015 and cannot be procured for construction in the time available
1,181	Remaining requirement for Army Basing Programme to be included in Master Plan

The figures above are additional and quite separate from the ongoing SFA procurement which is a legacy from previous housing initiatives and which fall outside the remit of the Salisbury Plain Masterplan.

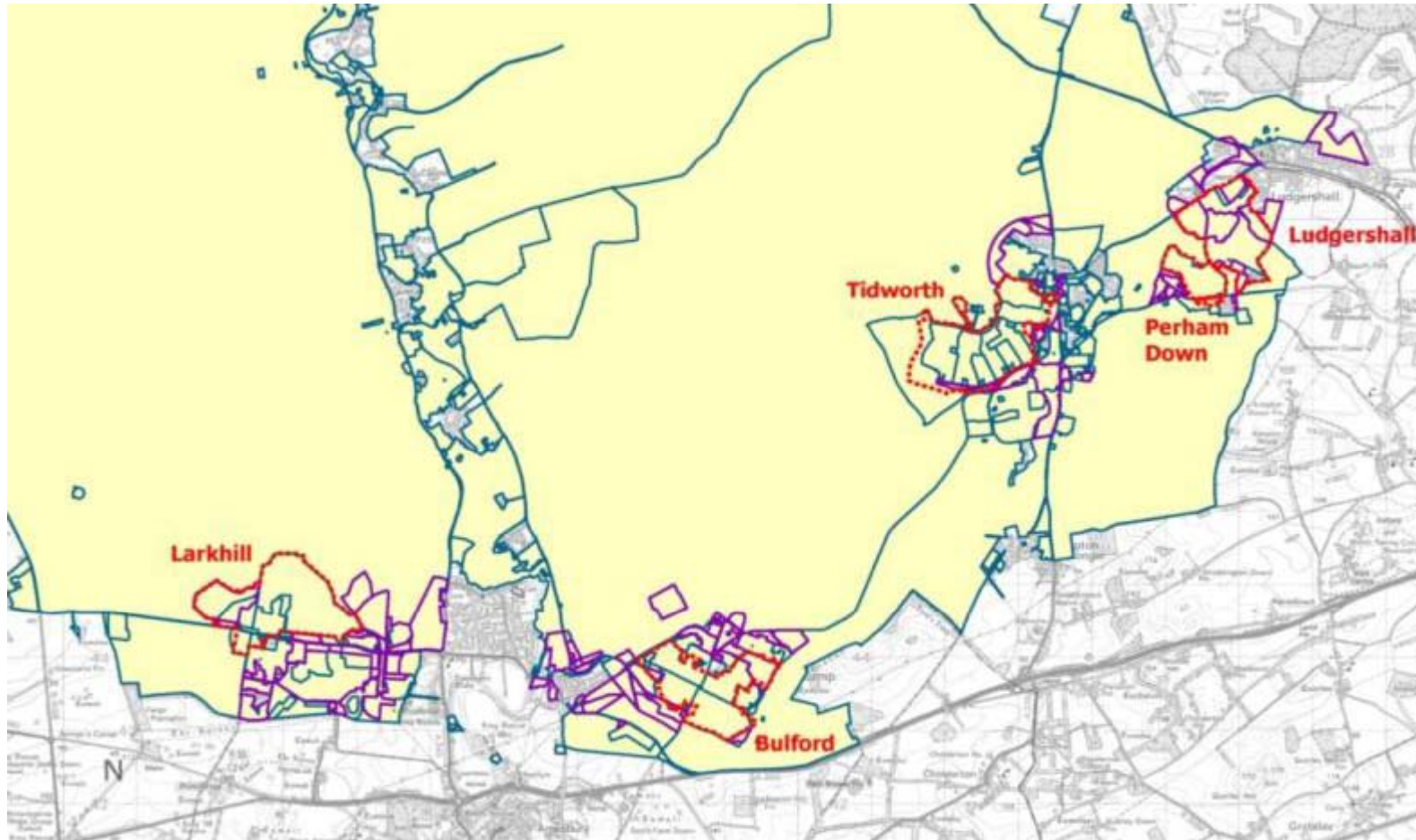
SFA Site Selection Methodology

- Long list of sites presented at November and December – over 80 sites
- A robust methodology to refine the selection and **verify the qualities** of the sites.

Three key stages:

- (1) High level sift – site scoring process, excluding heavily constrained sites. Assessing constraints based on environmental factors, social factors, and strategic impact (coalescence and proximity to duty stations)
- (2) Low level sift – looking at site specific constraints and factoring in consultee responses.
- (3) Identify recommended options for military housing

Army Basing Programme – Site Sift Stages



Ministry
of Defence

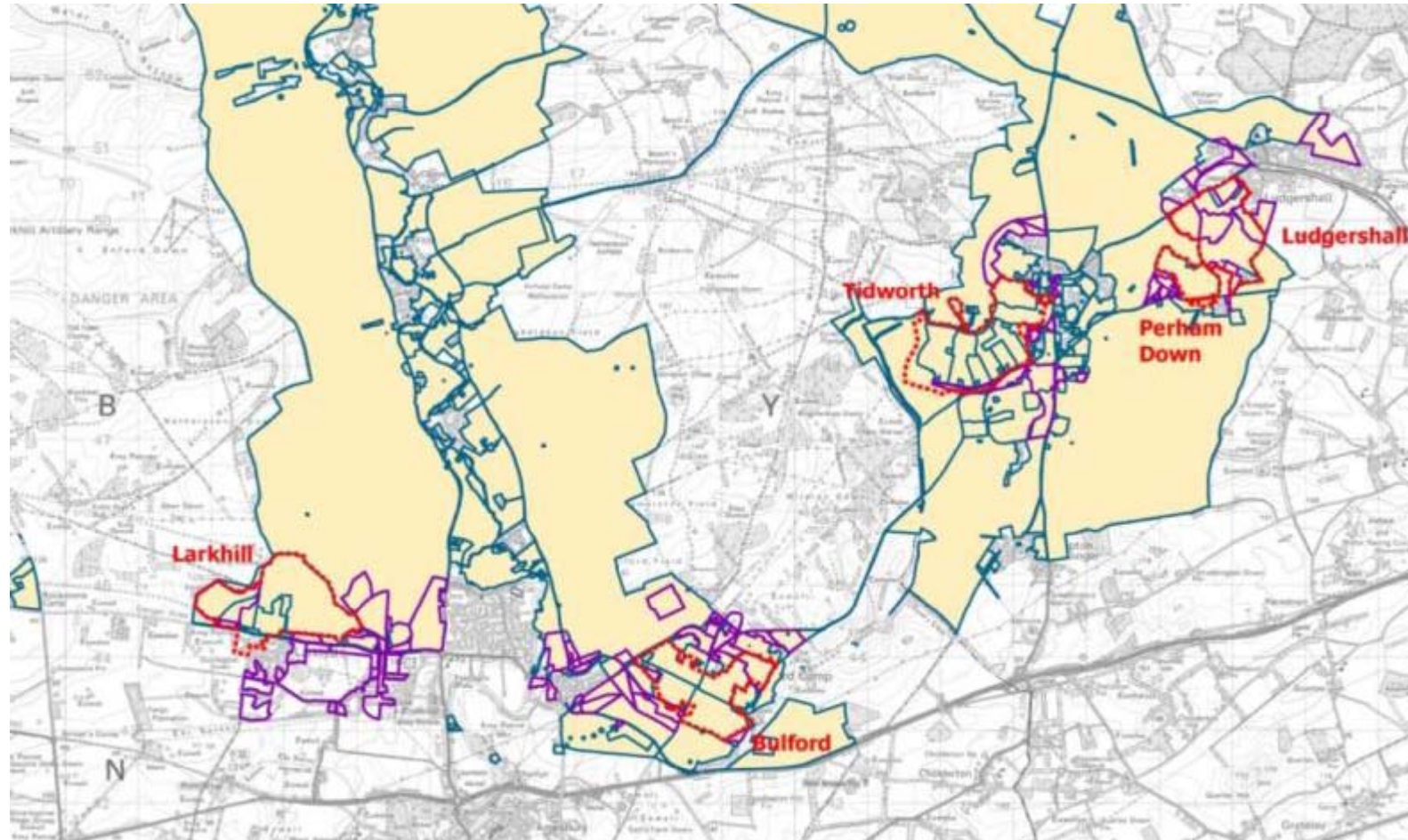
Stage 1 Include area only within 10 mile radius of the duty station

Stage 2 Exclude non-MoD land within the 10 mile radius



Defence
Infrastructure
Organisation

Army Basing Programme – Site Sift Stages



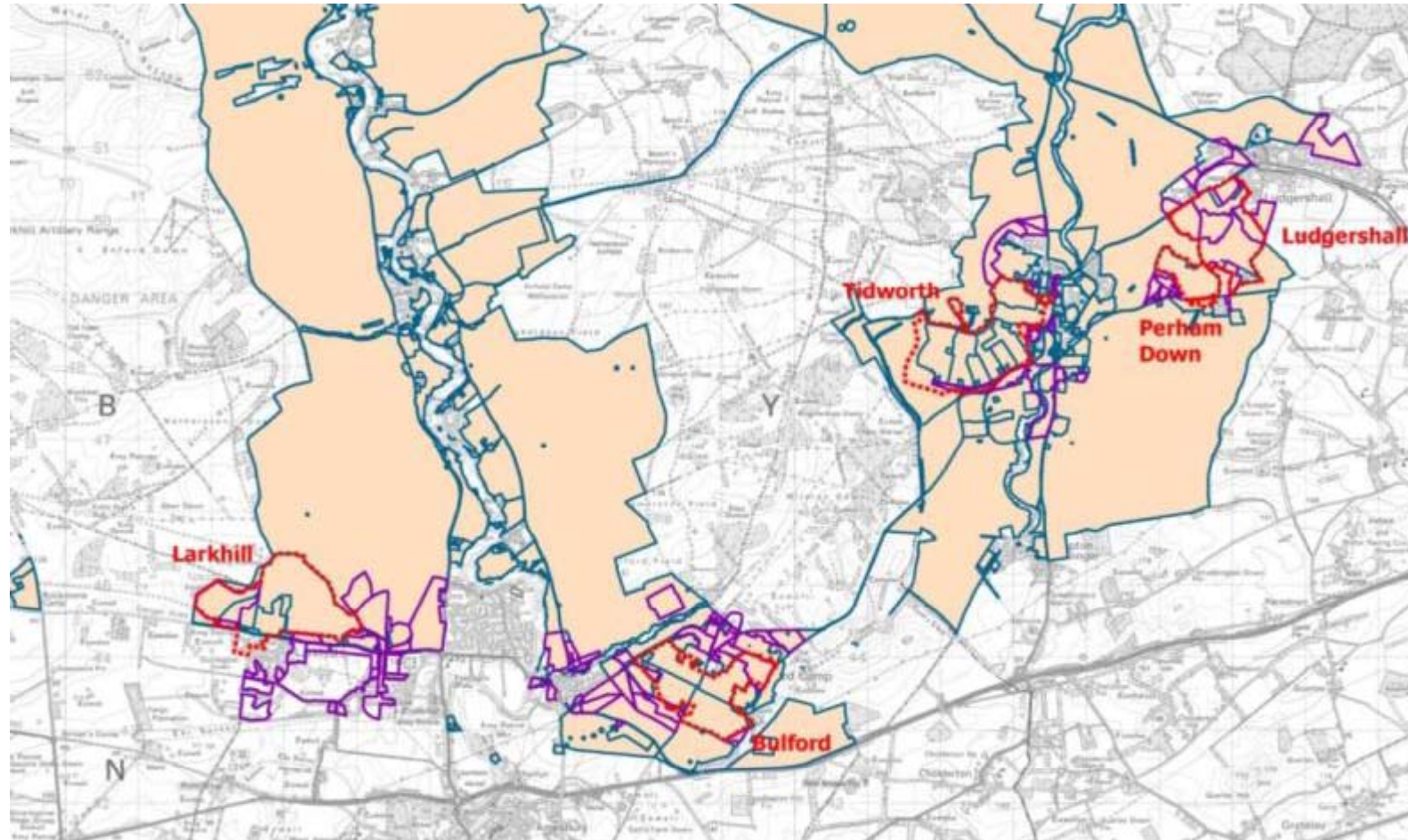
Ministry
of Defence

Stage 3 Exclude land covered by international and national level designations



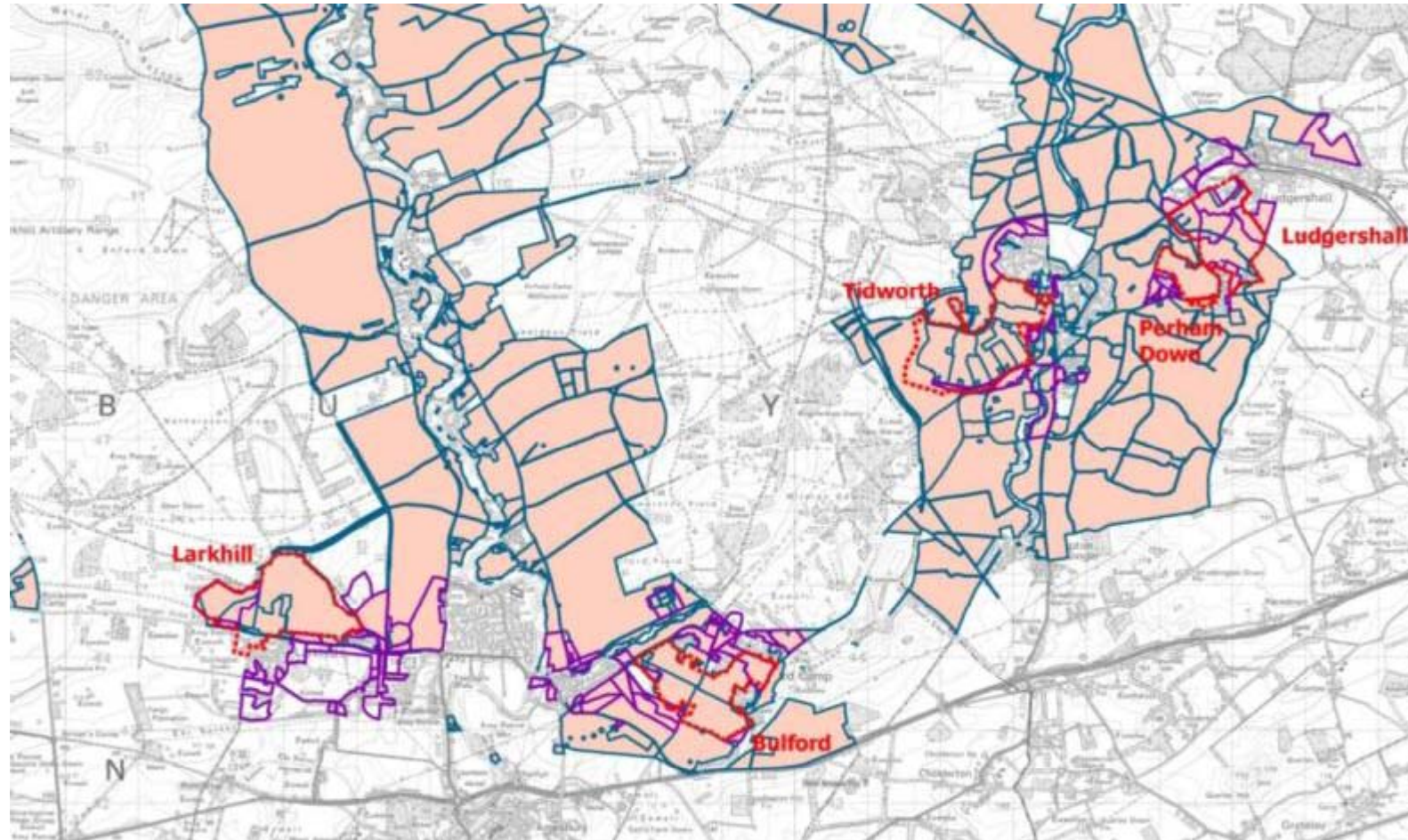
Defence
Infrastructure
Organisation

Army Basing Programme – Site Sift Stages



Stage 4 Exclude land with a high probability of flooding

Army Basing Programme – Site Sift Stages



Stage 5 Exclude key MoD areas/facilities

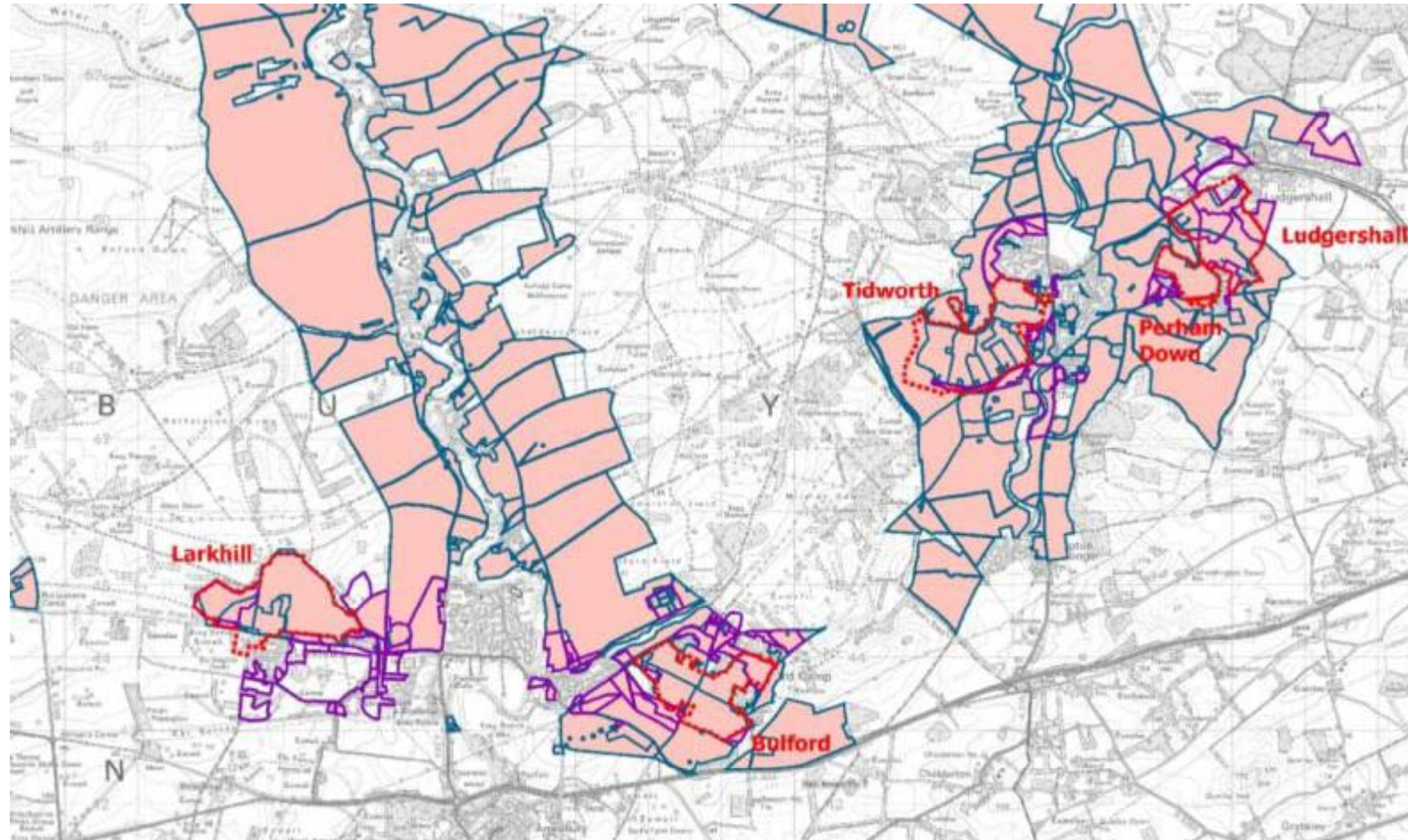


Ministry
of Defence

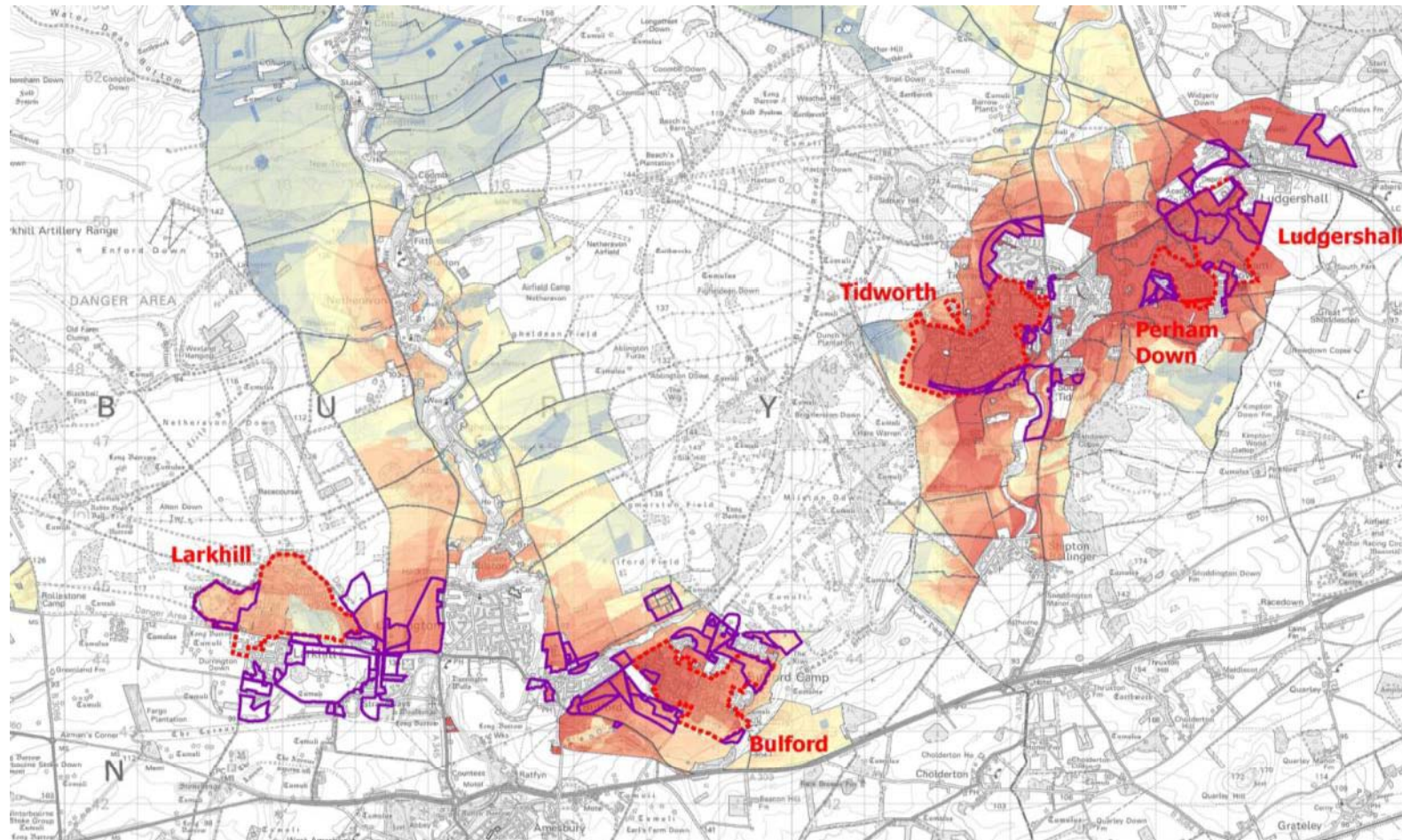


Defence
Infrastructure
Organisation

Army Basing Programme – Site Sift Stages

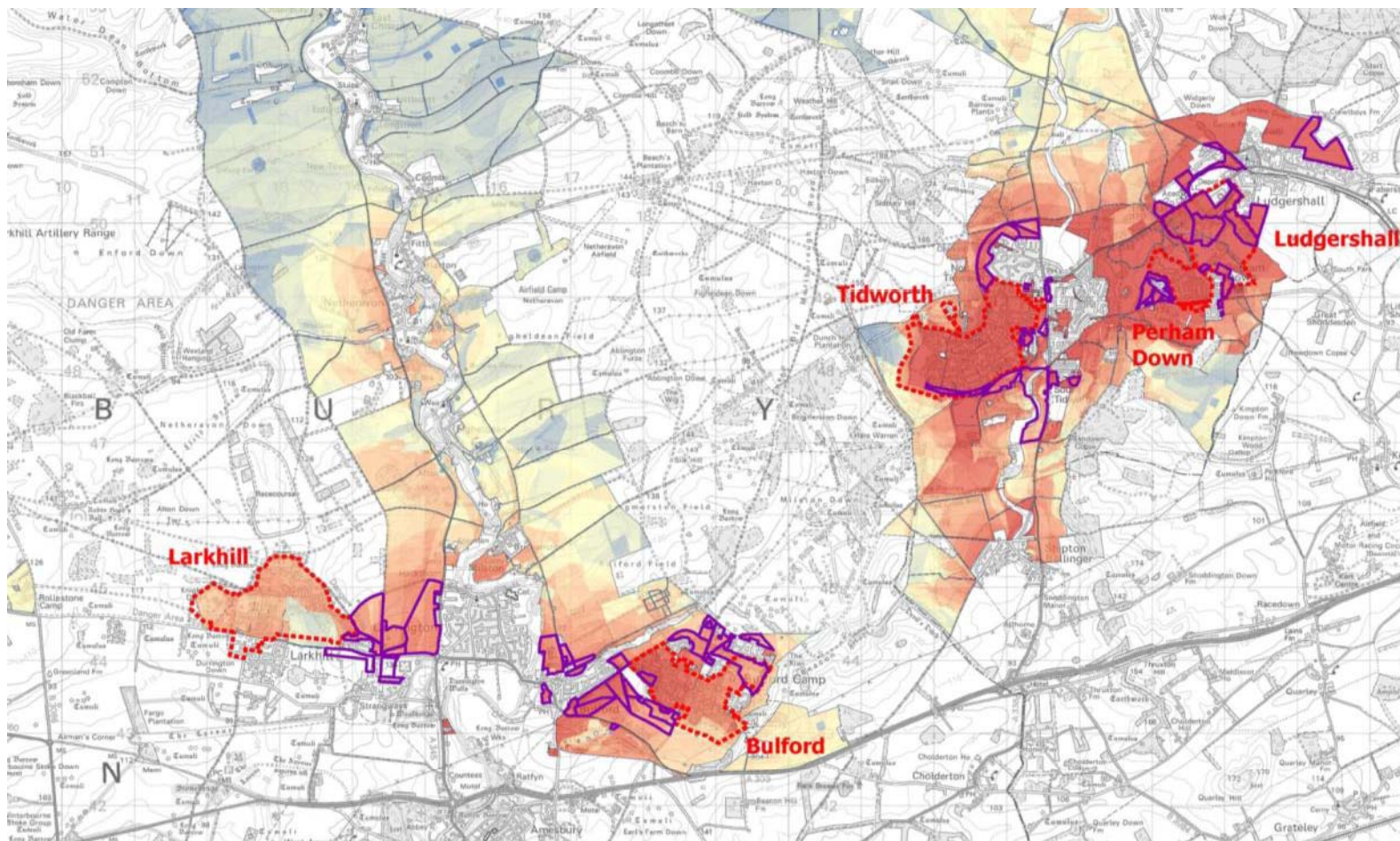


Army Basing Programme – Heat Map



Multi Criteria Analysis (MCA) to create Heat Map

Army Basing Programme – Heat Map



Sites scoring below Heat Map threshold omitted

Army Basing Programme – Salisbury Plain Masterplan

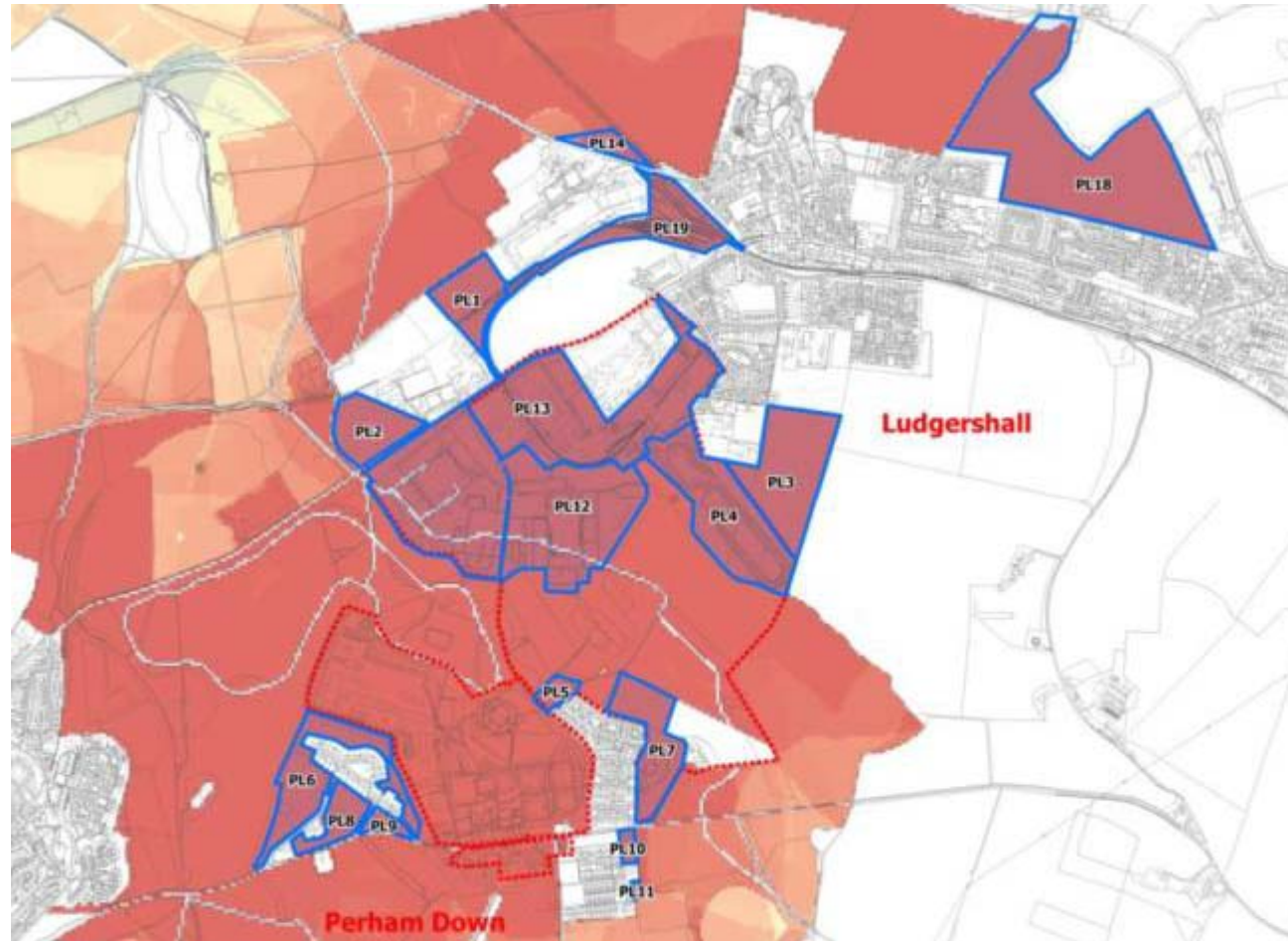
Preferred Sites (Green)

Scoring meets threshold, may require minor mitigation

Potential Sites (Orange)

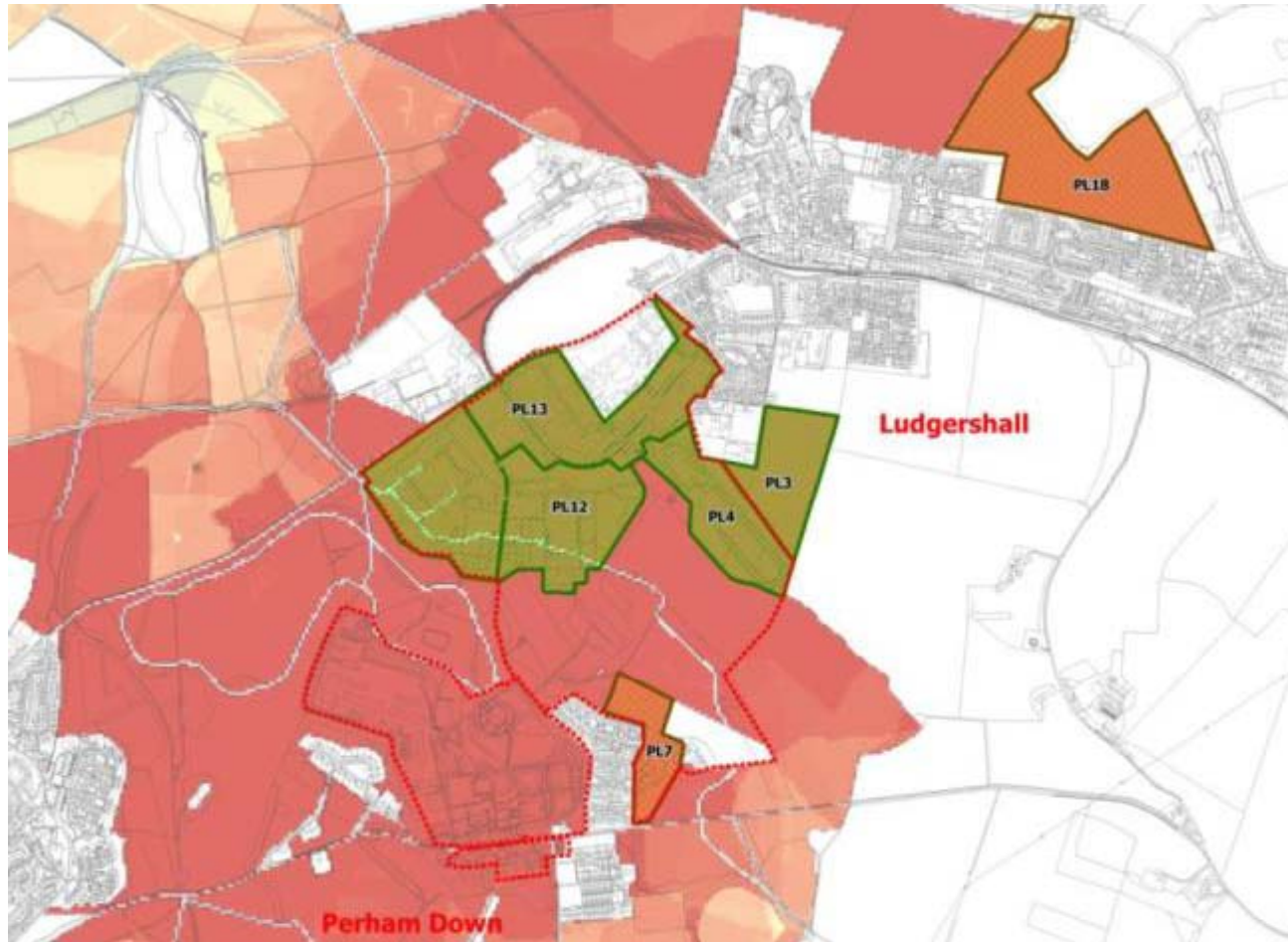
Scoring meets threshold but requires mitigation

Army Basing Programme – Perham Down/Ludgershall



Sites scoring below Heat Map threshold omitted

Army Basing Programme – Perham Down/Ludgershall



Preferred and potential SFA sites refined

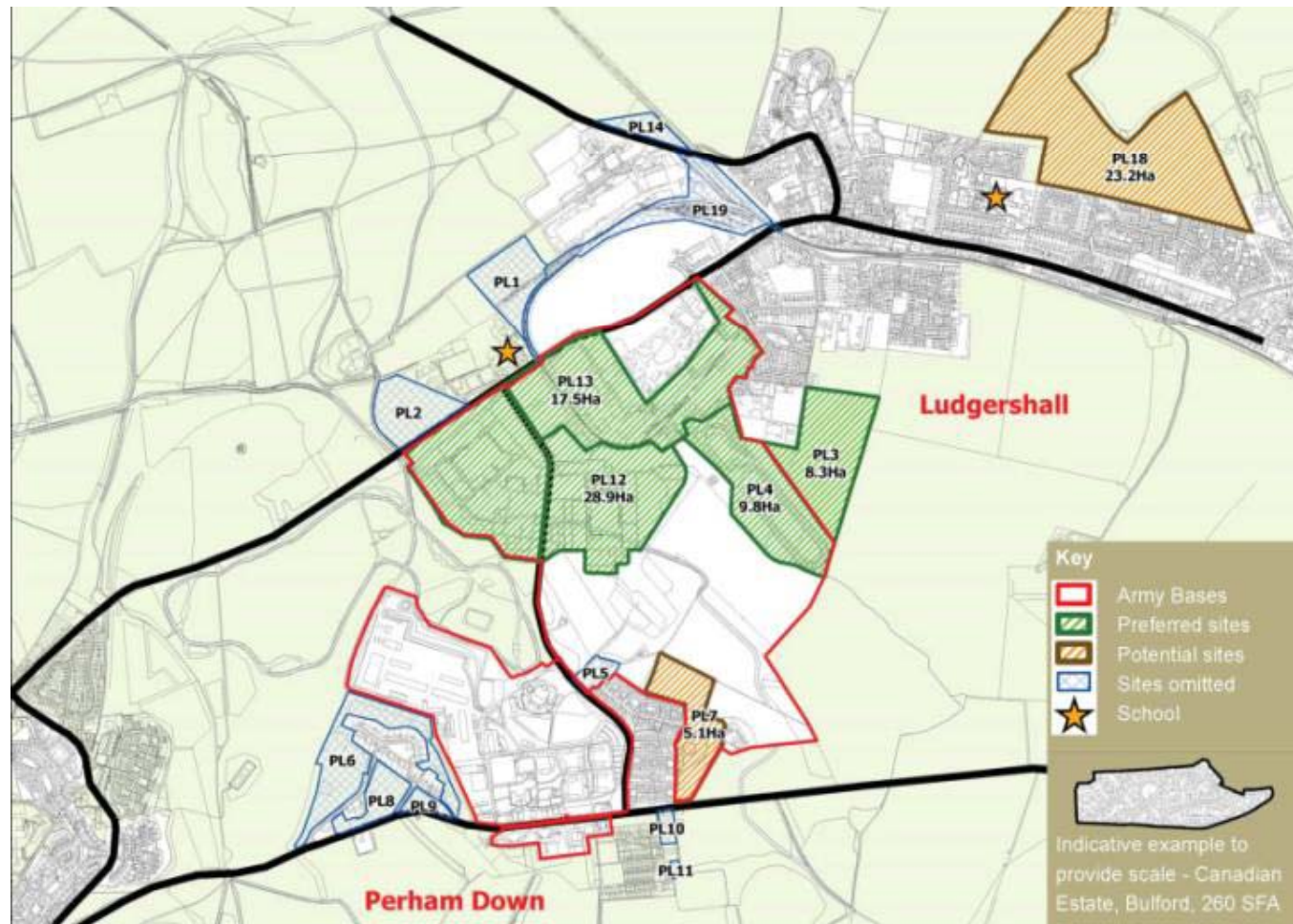


Ministry
of Defence

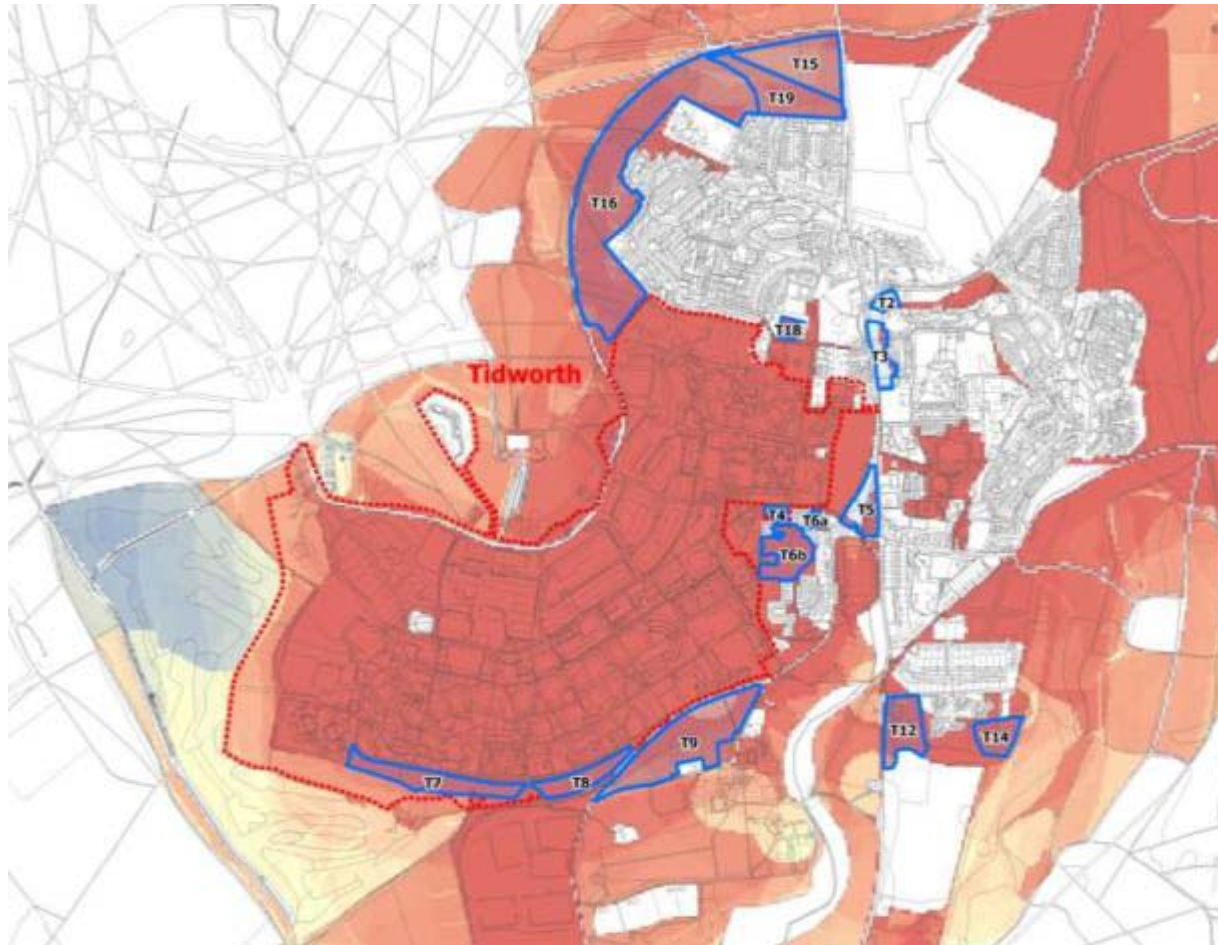


Defence
Infrastructure
Organisation

Army Basing Programme – Perham Down/Ludgershall



Army Basing Programme – Tidworth



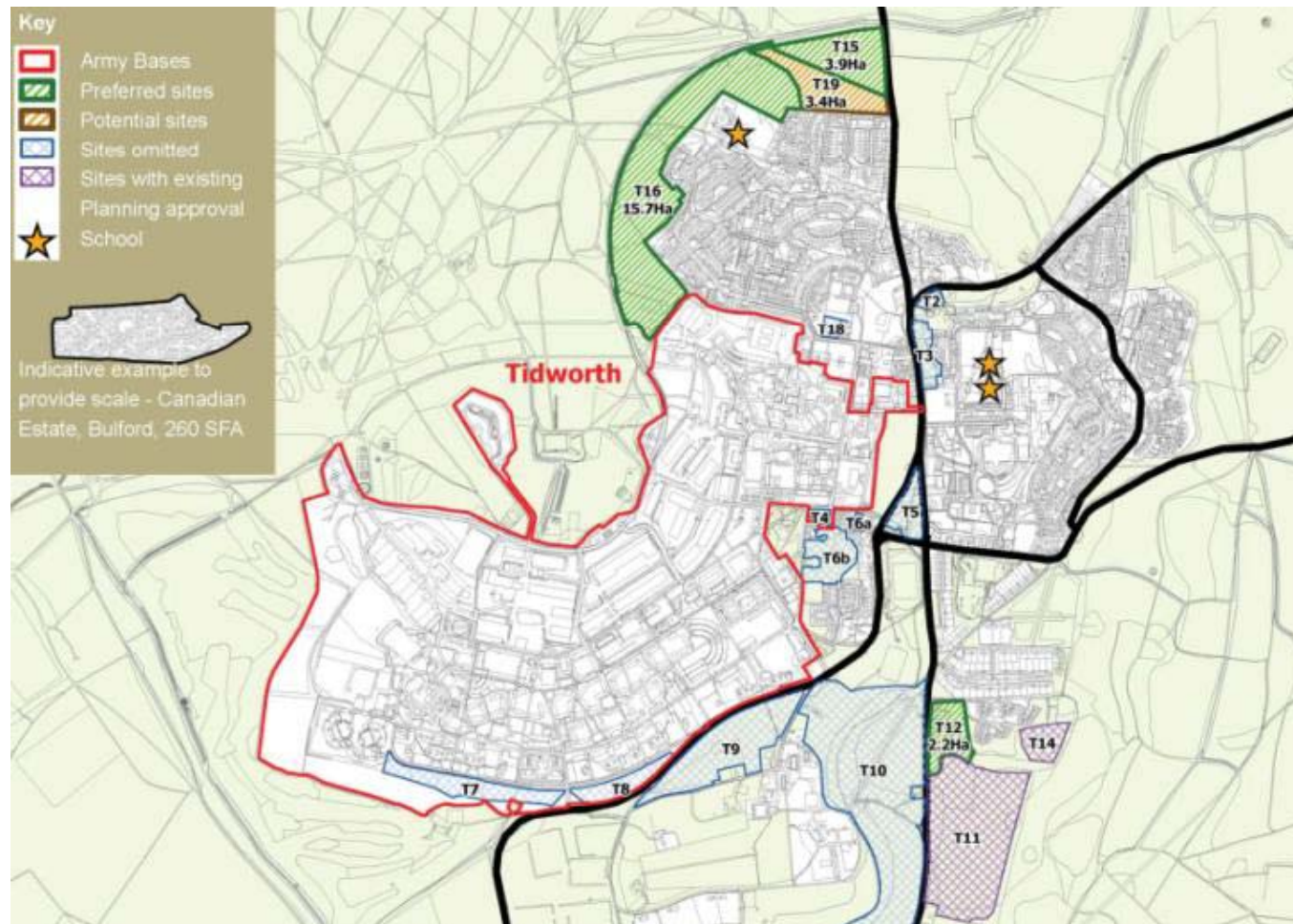
Sites scoring below Heat Map threshold omitted

Army Basing Programme – Tidworth

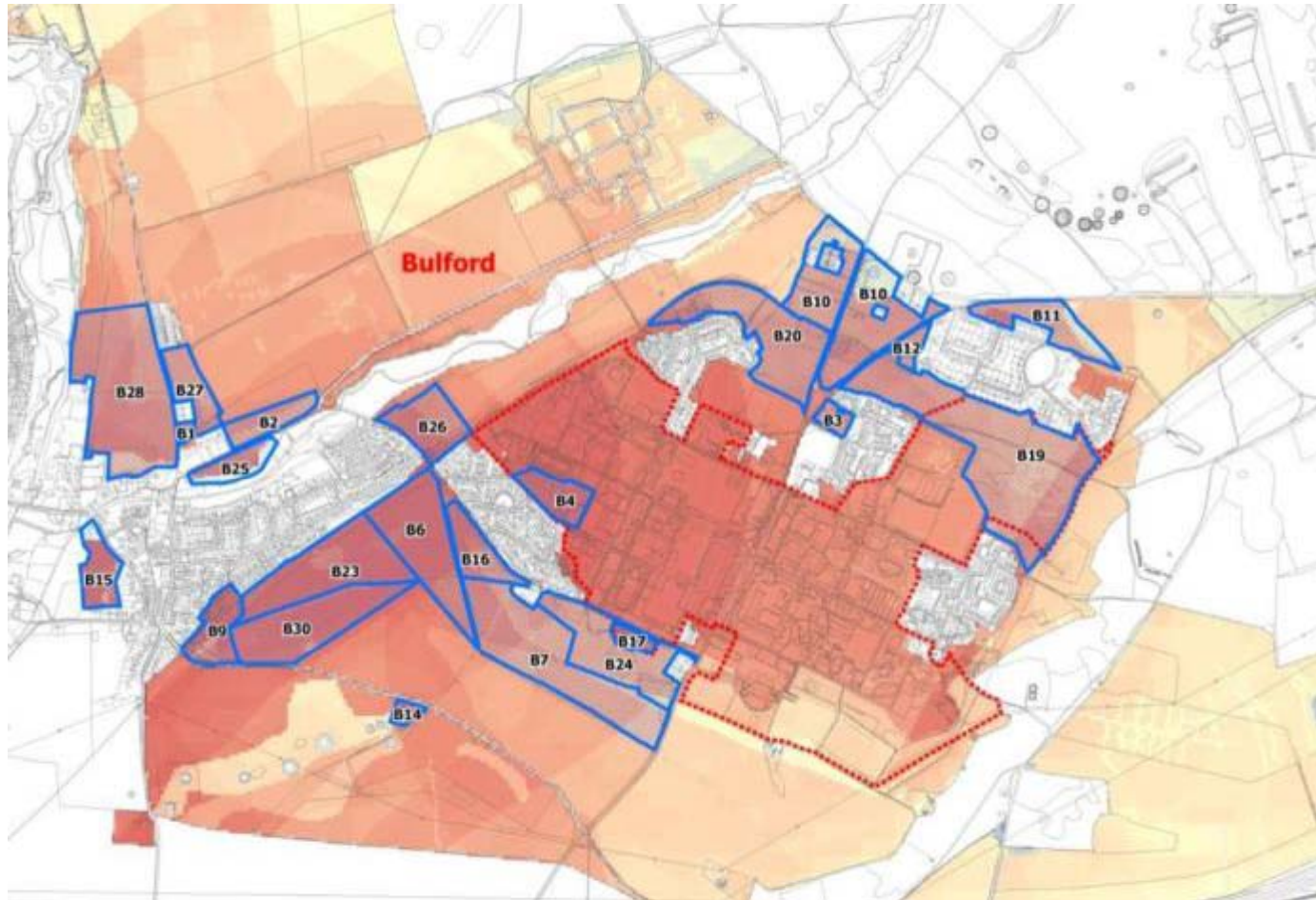


Preferred and potential SFA sites refined

Army Basing Programme – Tidworth



Army Basing Programme – Bulford



Sites scoring below Heat Map threshold omitted

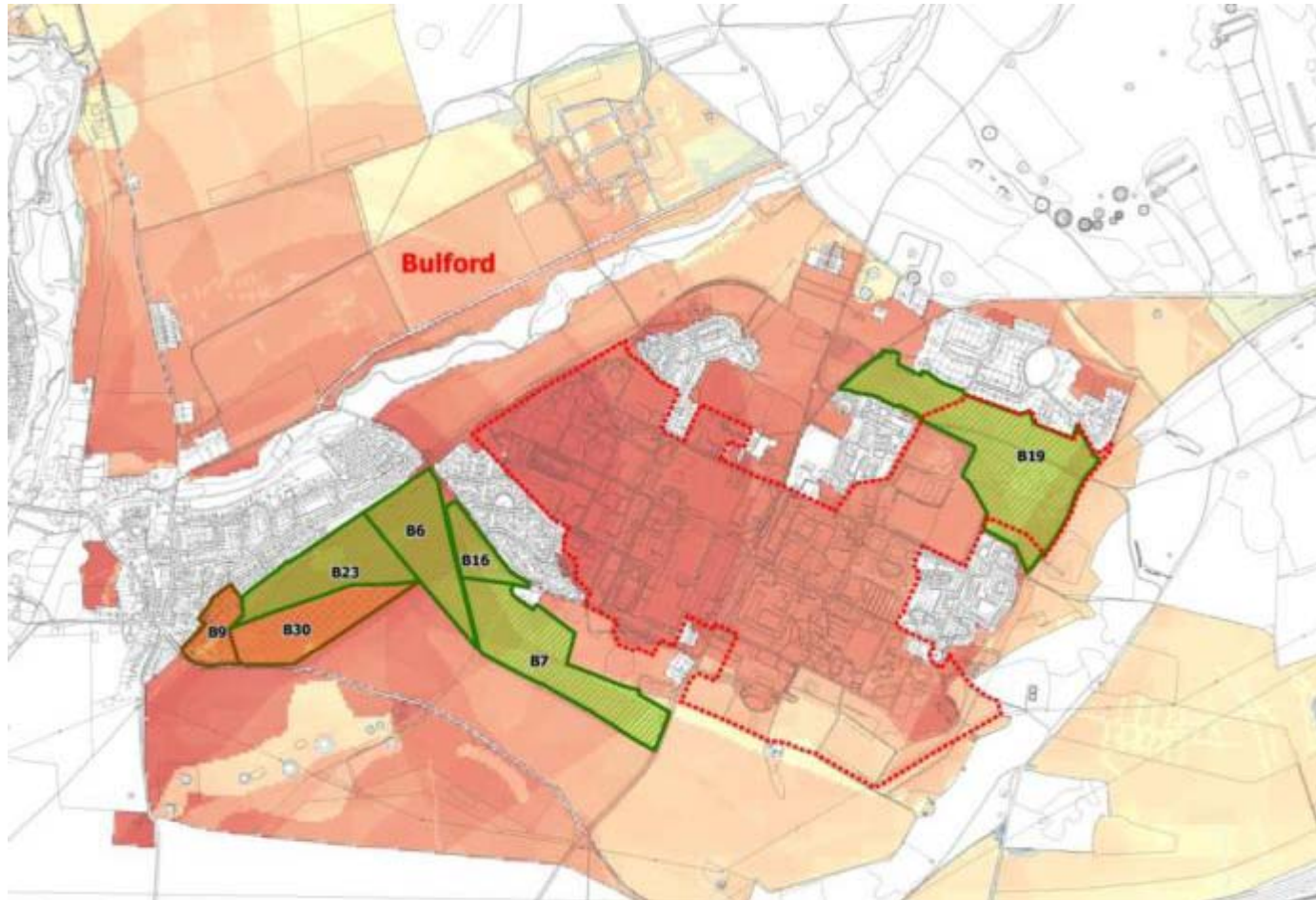


Ministry
of Defence



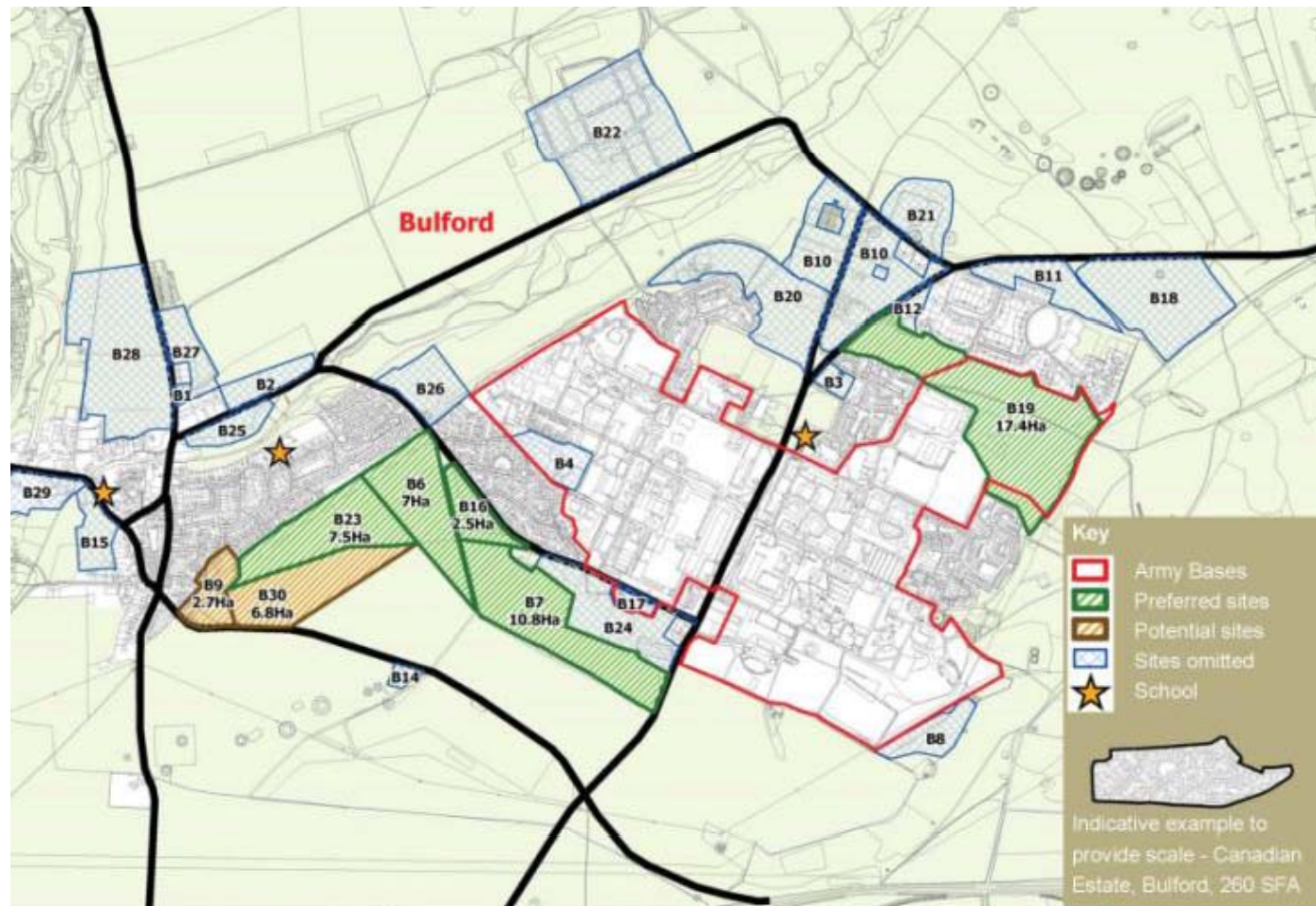
Defence
Infrastructure
Organisation

Army Basing Programme – Bulford

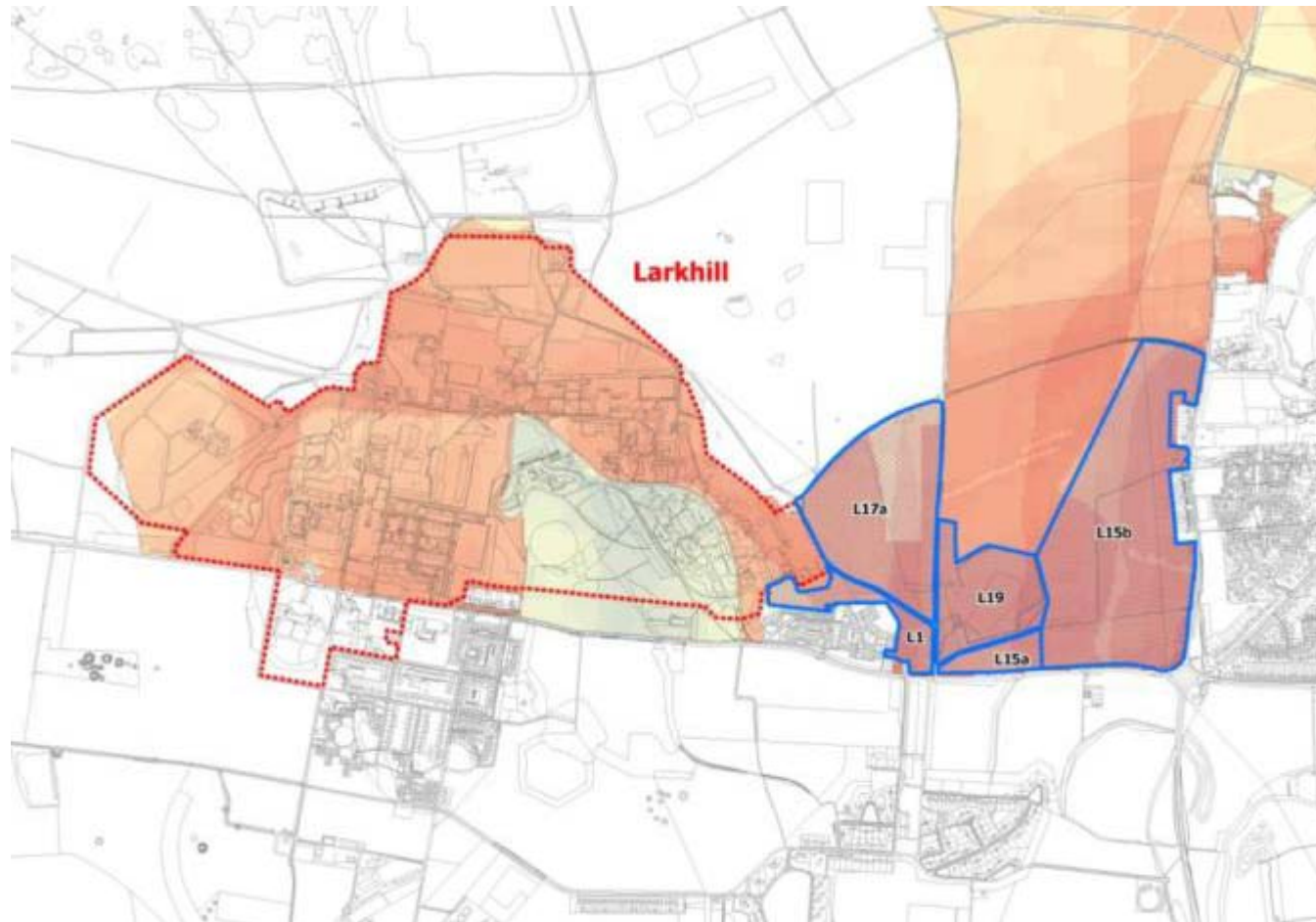


Preferred and potential SFA sites refined

Army Basing Programme – Bulford

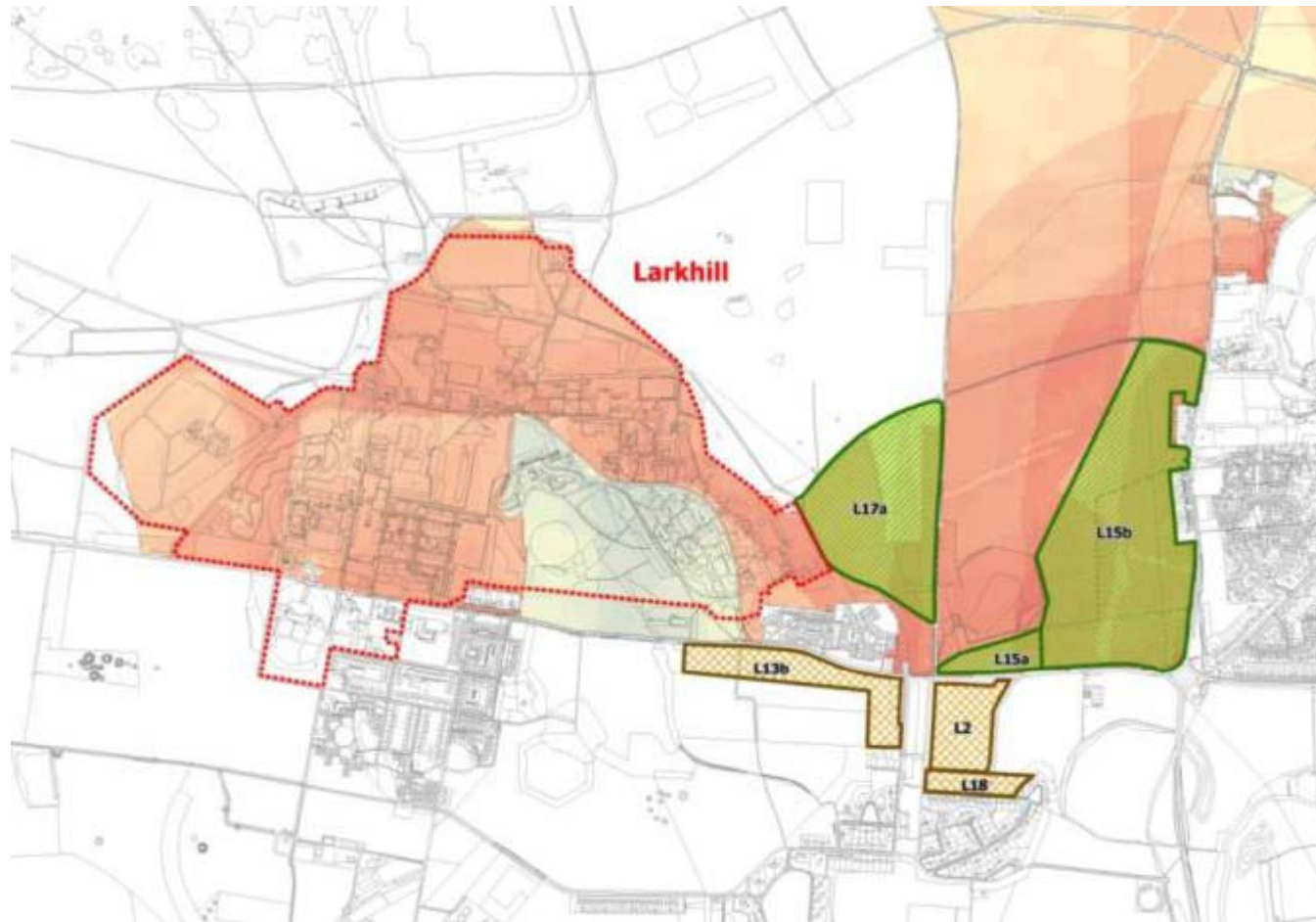


Army Basing Programme – Larkhill



Sites scoring below Heat Map threshold omitted

Army Basing Programme – Larkhill



Preferred and potential SFA sites refined

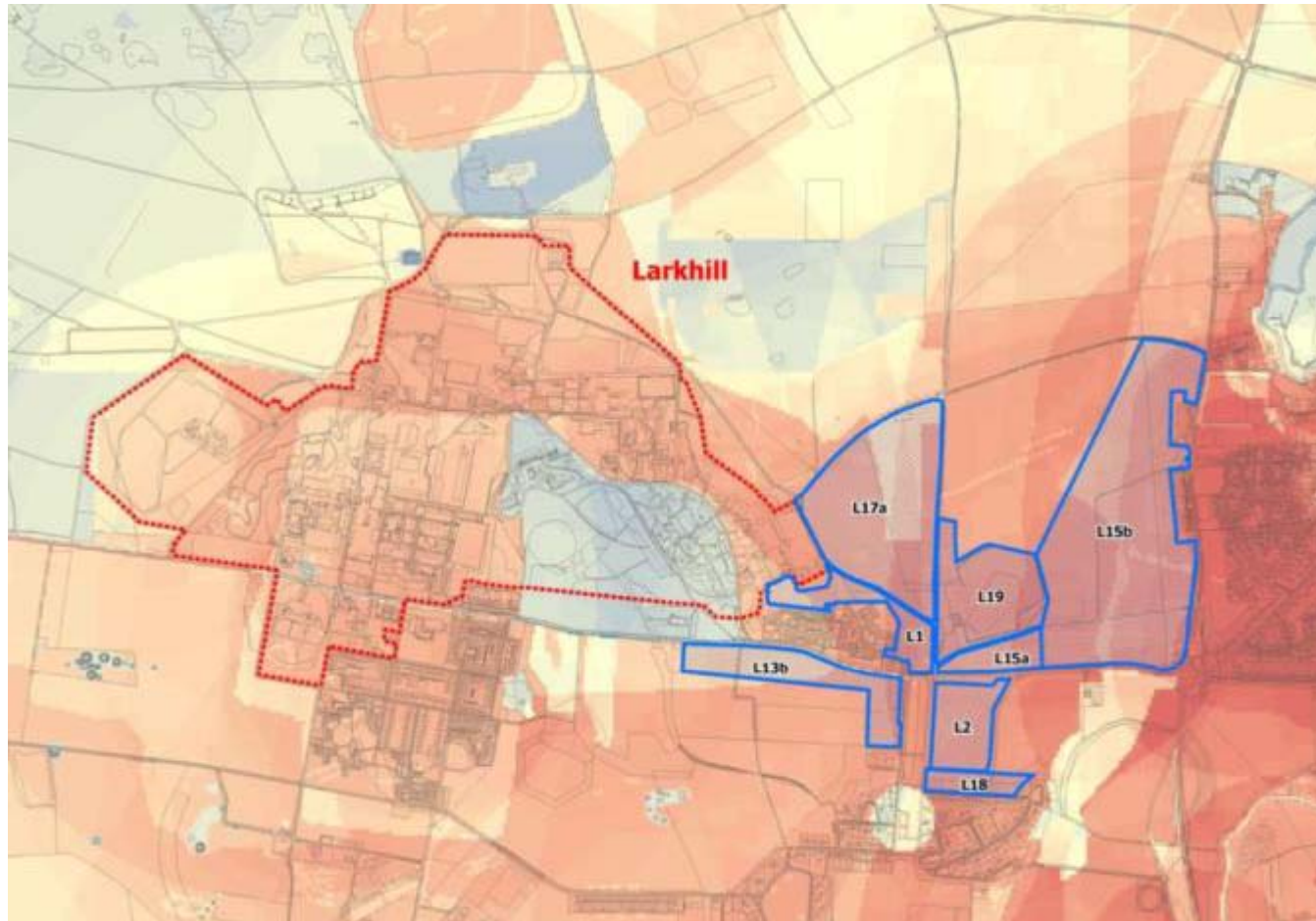


Ministry
of Defence



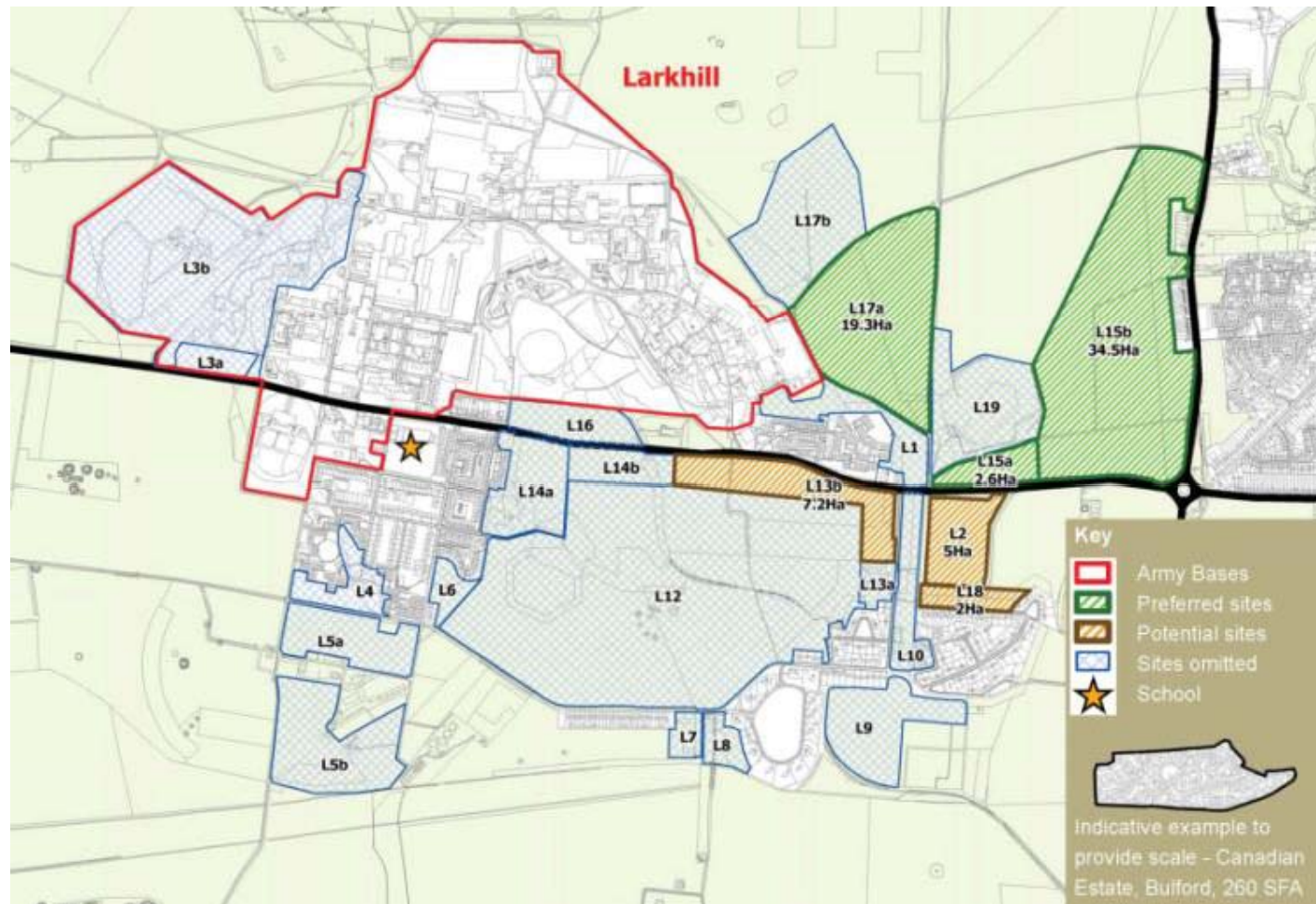
Defence
Infrastructure
Organisation

Army Basing Programme – Larkhill



Sites below the Packway and heat Map scoring

Army Basing Programme – Larkhill



Army Basing Programme – Salisbury Plain Masterplan

Transport



LEGEND

- JUNCTIONS LIKELY TO REQUIRE ASSESSMENT AS PART OF THE SPTA MASTERPLAN TRANSPORT ASSESSMENT



Ministry of Defence



Defence Infrastructure Organisation

Army Basing Programme – Salisbury Plain Masterplan

Transport

- We have undertaken some preliminary transport work to inform the preparation of the Masterplan.
- The plan indicates our preliminary thoughts on which junctions are likely to require detailed assessment as part of the 'over arching' transport assessment that is to be prepared in support of the Master Plan.
- It should be stressed that all of the transport assessment work undertaken to date is very preliminary and has examined a range of hypothetical distributions for SFA development across Larkhill, Bulford, Tidworth, Ludgershall/Perham Down.
- Initial findings suggest that, in terms of cumulative traffic effects on the wider highway network, there is little difference between spreading SFA evenly across settlements or focussing it all on one location. However, there will clearly be differing implications for local roads that will need to be examined in detail.
- The transport assessment work undertaken to date is intended to provide a 'high level' indication of the extent of the highway network likely to be affected so that the scope of detailed assessment work can be discussed and agreed with the highway authorities. Individual junctions and links have not been assessed and we don't yet know what infrastructure improvements may be required.
- A meeting was held very recently with the Highways Agency, Wiltshire Council and Hampshire County Council Highways to discuss the transport assessment work to date and to seek to agree the scope of work for the next, more detailed, stage of the assessment.
- Once we have feedback from the highway authorities the next stage of transport work can commence

Army Basing Programme – Salisbury Plain Masterplan

Socio-Economics

Accommodation	Units	Military Accommodation	Spousal Pop	Child Pop	Total
SLA	2,898	2,898	0	0	2,898
SFA	1,380	1,380	1,380	2,041	4,801
Total	4,278	4,278	1,380	2,041	7,699

Education

- Child population based on data of families relocating from Germany
- Research indicates that the majority of school places that will be required are pre-school and primary school places.
- In the short term Salisbury Plain will experience a net reduction in population until 2017. Therefore new school places will be required from 2017 onwards.

Medical Facilities

- Need for 1 to 2 New GPs to serve the new population
- Need for 1 to 2 Dental Practitioners to serve the new population

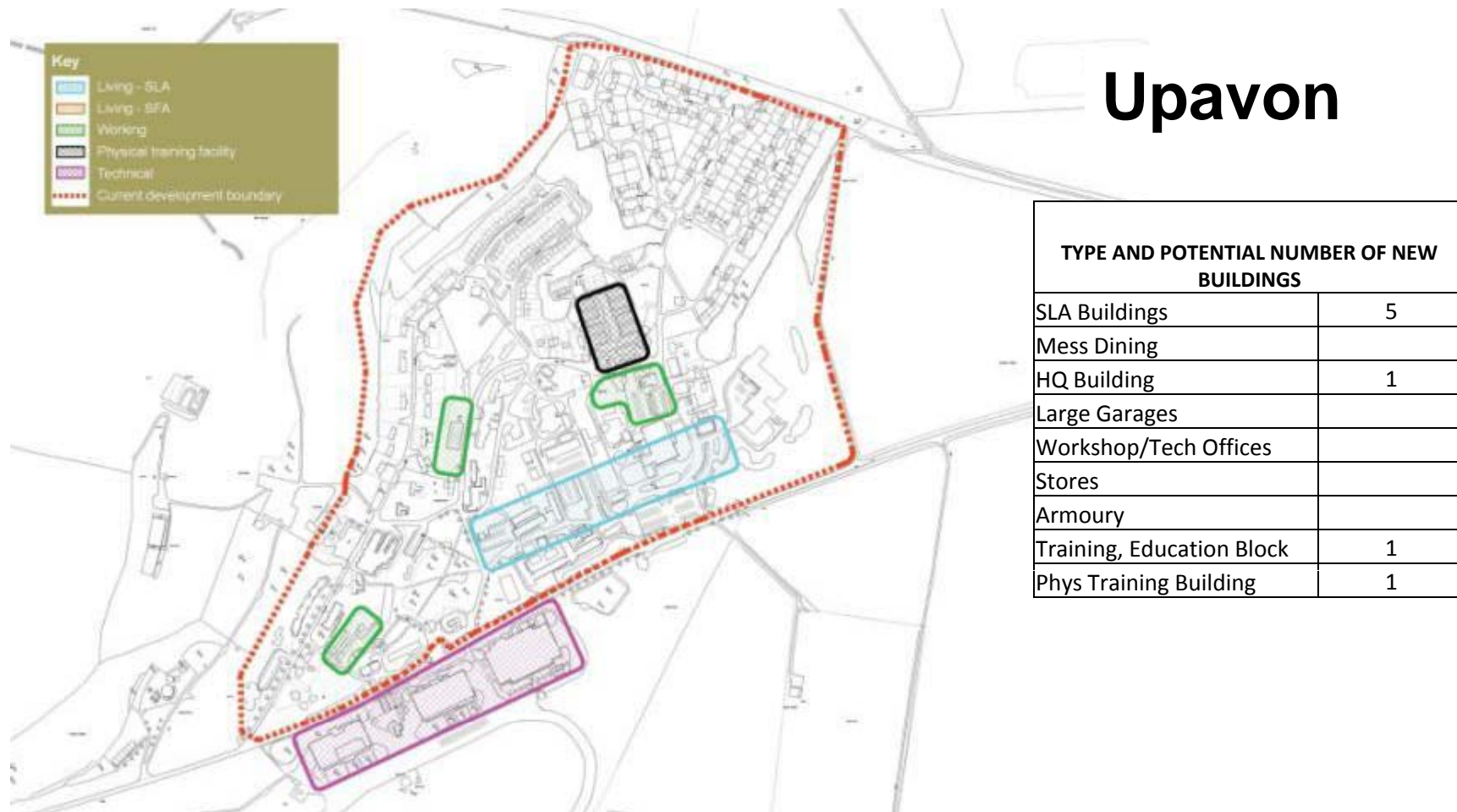
Army Basing Programme – Salisbury Plain Masterplan

Internal Camp Development

Upavon – Perham Down – Tidworth – Bulford – Larkhill

- Study process on requirements and options is ongoing
- Currently work in progress at recommendation stage only
- DIO & Army are studying proposals – nothing has been endorsed to date
- Proposals are subject to change in the decisions process
- Time frame – process completion by mid March 2014

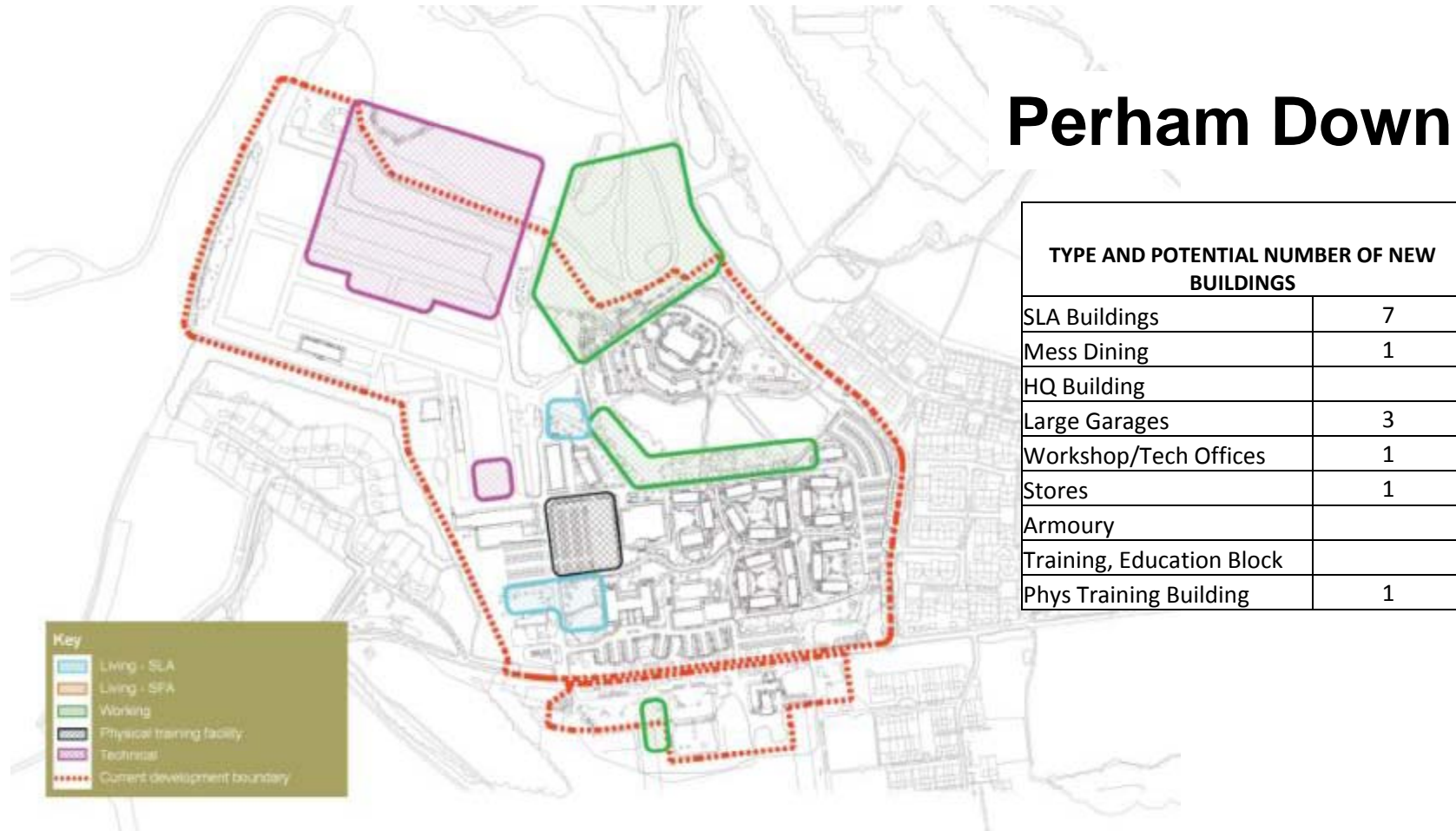
Army Basing Programme – Salisbury Plain Masterplan



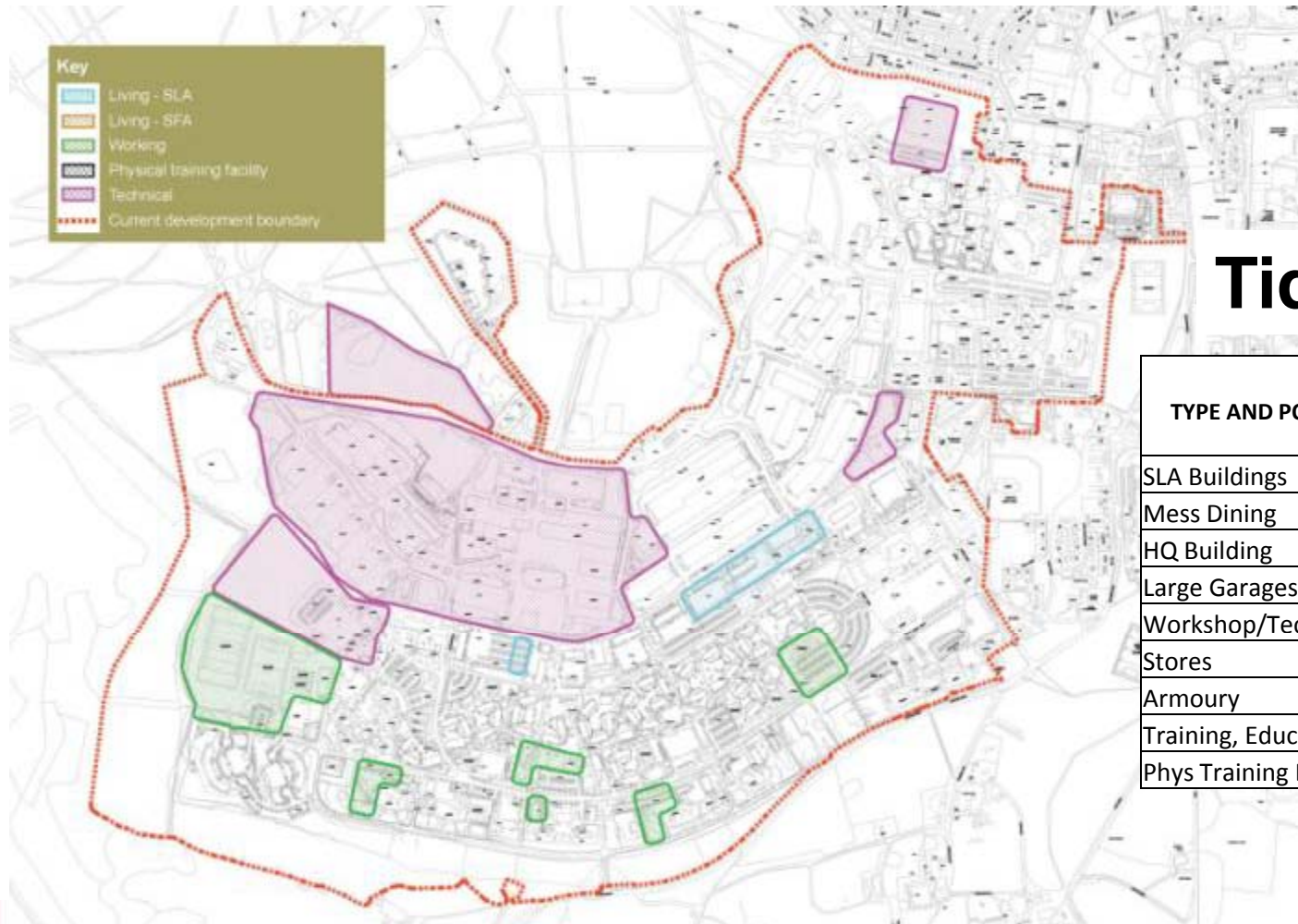
Upavon

Army Basing Programme – Salisbury Plain Masterplan

Perham Down



Army Basing Programme – Salisbury Plain Masterplan



Tidworth

TYPE AND POTENTIAL NUMBER OF NEW BUILDINGS	
SLA Buildings	7
Mess Dining	3
HQ Building	2
Large Garages	4
Workshop/Tech Offices	3
Stores	5
Armoury	2
Training, Education Block	3
Phys Training Building	1



Ministry
of Defence

[POST PRESENTATION NOTE: Revised plan has been added to provide further information and clarification in accordance with questions asked and responses given at the original presentation made on 29th January 2014]



Defence
Infrastructure
Organisation

Army Basing Programme – Salisbury Plain Masterplan

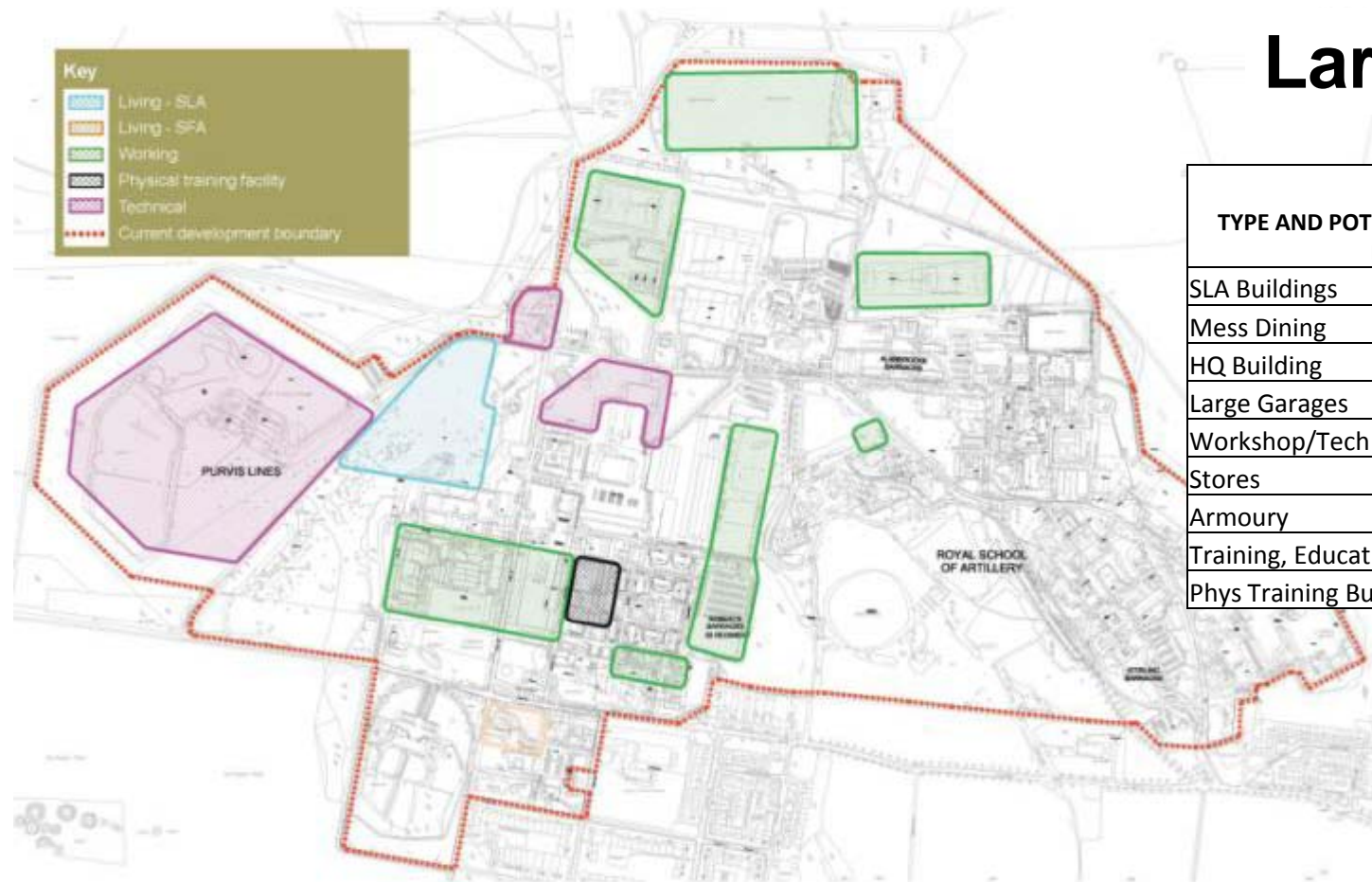


Bulford

TYPE AND POTENTIAL NUMBER OF NEW BUILDINGS	
SLA Buildings	5
Mess Dining	1
HQ Building	1
Large Garages	4
Workshop/Tech Offices	1
Stores	4
Armoury	1
Training, Education Block	1
Phys Training Building	

Army Basing Programme – Salisbury Plain Masterplan

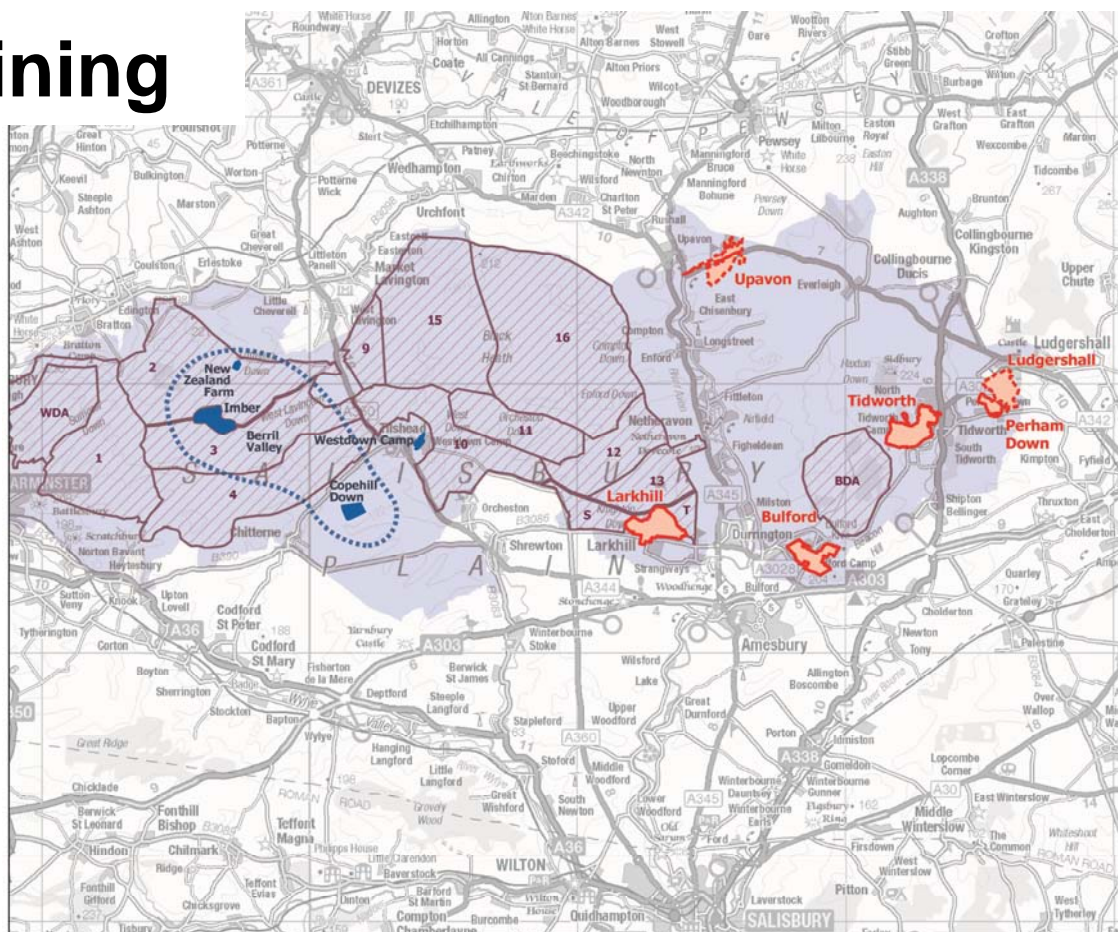
Larkhill









TYPE AND POTENTIAL NUMBER OF NEW BUILDINGS	
SLA Buildings	30
Mess Dining	4
HQ Building	
Large Garages	6
Workshop/Tech Offices	6
Stores	4
Armoury	1
Training, Education Block	2
Phys Training Building	

Army Basing Programme – Salisbury Plain Masterplan

Training



Legend

-  Bases most affected
-  Other bases
-  Training Area
-  Complex Manoeuvre Environment (CME)
-  Key CME elements
-  Danger Area



Ministry
of Defence



Defence
Infrastructure
Organisation

Army Basing Programme – Salisbury Plain Masterplan

Salisbury Plain Training Area Emerging Training Requirements

- Training expected to return to historic levels – these will remain within existing and agreed capacity limits
- Minimal changes in military vehicle use anticipated
- Upgraded Range provision around Centre and at Bulford
- UK Centre of Specialisation for Unmanned Aerial Systems (UASs) at Larkhill – increased UAS activity over SPTA likely

Training Features Unrelated to Army Basing

- Defence Transformation will require development of existing training features on SPTA:-
 - Development of a Complex Manoeuvre Environment across SPTA West
 - Possible refurbishment of existing Camp accommodation being investigated

Stakeholder Consultation

- Phase 3 report to be issued to stakeholders
- Workshops with stakeholders – February 2014:
 - Statutory Consultees
 - Garrisons
 - Healthcare Providers
 - Education Providers

Army Basing Programme – Salisbury Plain Masterplan

Public Consultation

- Formal 6 week consultation – **19th February to 1st April 2014**
- Exhibitions:
 - Venues and Dates to be announced but expect to hold events in key areas e.g. Amesbury, Durrington/Larkhill, Ludgershall, Tidworth/Bulford, Salisbury
- Website:
 - Consultation Material to be uploaded to Wiltshire Council's MCI Webpage and DIO's www.gov.uk webpage. Link:
<https://www.gov.uk/government/consultations/salisbury-plain-training-area-master-plan-army-basing-programme>

Army Basing Programme – Salisbury Plain Masterplan

Timeline

Public consultation	19 th February to 1 st April 2014
Collate Responses	April 2014
Final Masterplan	Late May 2014
Public Consultation on Final Masterplan	Late May 2014 to Late June 2014
Endorsement of Masterplan by Wiltshire Council	Post June 2014
Preparation of first 'tranche' of planning applications	May 2014 to September 2014
Submission of first 'tranche' of planning applications	September 2014

Army Basing Programme – Salisbury Plain Masterplan

Open Floor Q&A Session