

EC Type Examination Certificate Number: **UK/ 0120/ SGS0016**

Cewe Instrument AB

Box 1006
SE 61129
Nyköping
Sweden

Instrument Identification:
i-Credit 300, Electricity Meter, E1C105-301
Single Phase, Credit, Active Import/ Export, Multi-rate, Electricity Meter

Instrument Traceable Number
UK/ 0120/ SGS0016

has been assessed and certified as meeting the requirements of

EC Directive 2004/22/EC

on Measuring Instruments Annex B

It is certified that the manufacturer's technical design and specimen for the above instrument has been examined and, based on the evidence submitted, it is considered that the instrument conforms to the requirements of MI-003 of EC Directive 2004/22/EC.

This certificate is to be used in conjunction with a certificate covering the product verification as required in Annex D or Annex F.

This certificate is valid for 10 years from 21st July 2008 until 20th July 2018
Issue 2

Certification is based on report number(s) EMA116126/ 1 Cewe Issue 2 dated 21st July 2008

Notified Body Number 0120

Authorised Signature



Notified Body
SGS United Kingdom Ltd, 202B Worle Parkway, Weston-super-Mare, BS22 6WA UK
t +44 (0)1934 522917 f +44 (0)1934 522137 www.sgs.com
Contact Address
SGS United Kingdom Ltd, Unit 10, South Industrial Estate, Bowburn, Durham, DH6 5AD UK
t +44 (0)191 377 2000 f +44 (0)191 377 2020 www.sgs.com

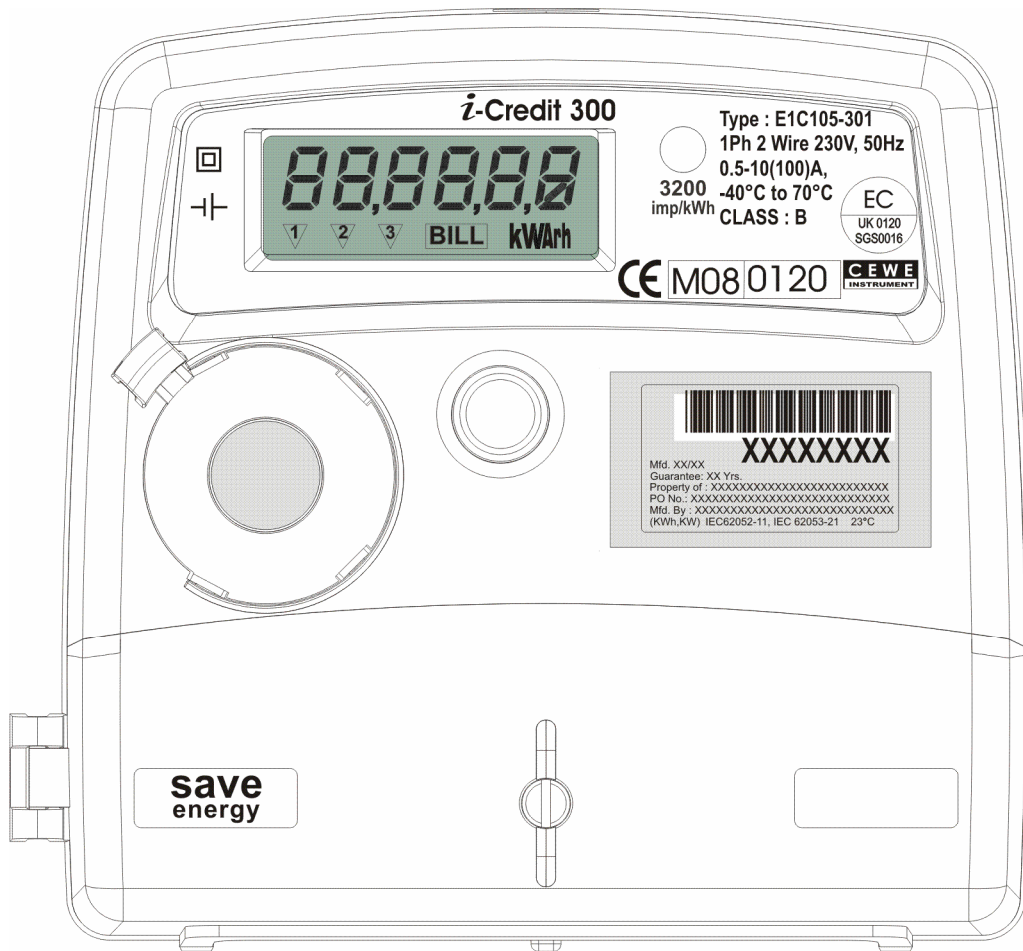
EC Type Examination Cert.



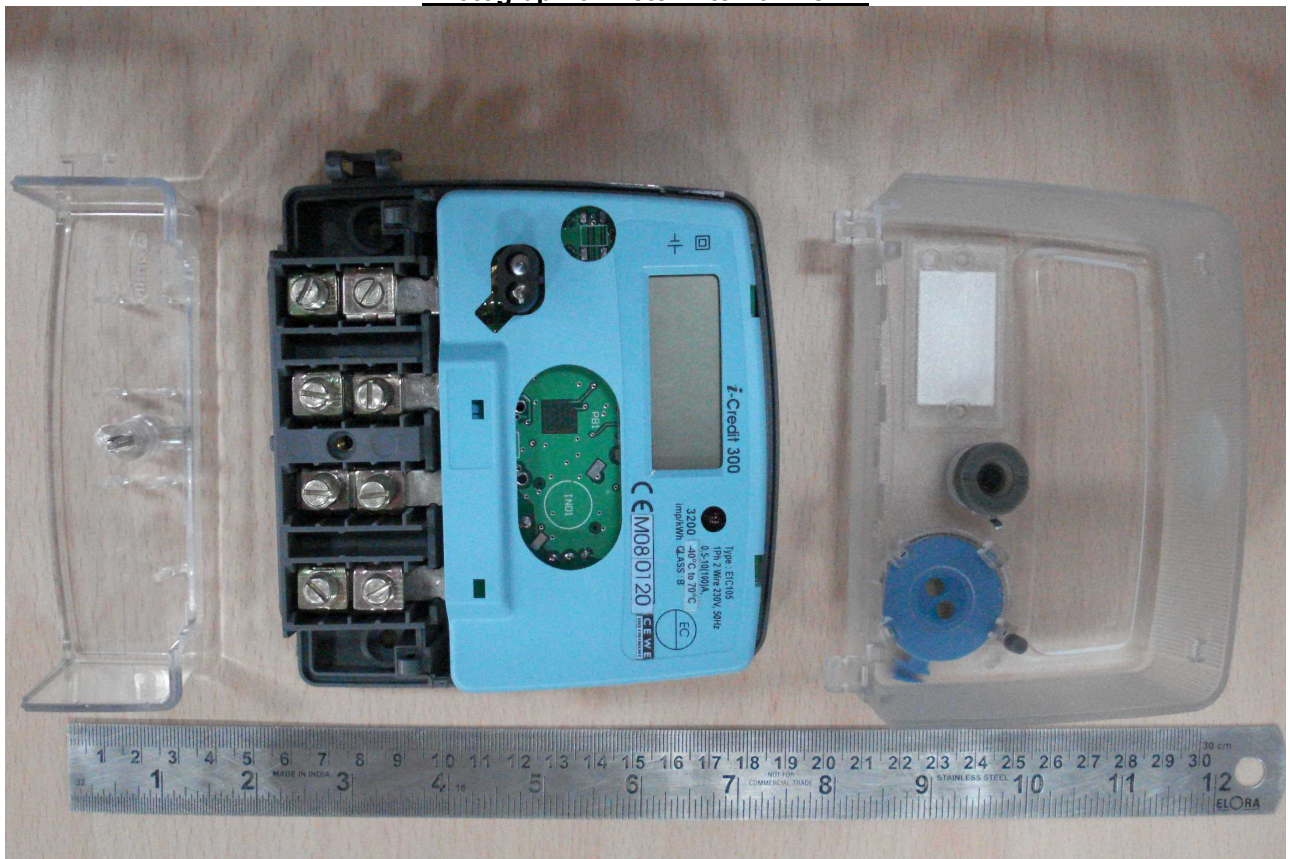
Approval Annex for EC Type Examination Cert. No. UK/ 0120/ SGS0016

Manufacturer : Cewe Instrument AB	
Type of Meter(s) : i-Credit 300 E1C105-301	
Description of Meter : Single Phase, Credit, Active Import/ Export, Multi-rate, Electricity Meter	
Accuracy Class (es) : A or B (kWh)	Software Version No : b0 000 Location : LCD
Firmware Version No : b0 000 Location : LCD	Bill Of Materials No : E1C105-301
Meter Location : Indoor	Sealing Type : Wire & Crimp Location : 2 x Front of meter
Integrity of Meter : Inaccessible without breaking seals	Temperature Range : -40°C to 70°C
Type of Circuit : 1p2w	Frequency : 50Hz
Current Range (A) : 0,5-10(60)A 1-20(80)A 1-20(100)A 0,5-10(100)A	Voltage Range (V) : 230V

Artwork View of Front of Meter



Photograph of meter Internal View 1



Photograph of meter Internal View 2



Photograph of meter Internal View 3



Product Variant Identification Details:

	Type Designation	Description of meter
E1C	Wiring Type: 230V P-N 1P2W	
	10 Accuracy: = Class B (Class 1)	
	20 Accuracy: = Class A (Class 2)	
	2 Current Range: = 0.5-10(60)A	
	3 Current Range: = 1-20(80)A	
	4 Current Range: = 1-20(100)A	
	5 Current Range: = 0.5-10(100)A	
	-	
	301 Optional Features: Base model, no additional comms, no pulse output, no backlight	

Modifications to the meter(s) described according to approval No. **UK/ 0120/ SGS0016** must be notified to the issuing body to confirm the meter(s) continuing compliance to the relevant pattern approval standard(s).