

# MAPPA NEWS

Norfolk Multi-Agency Public Protection Arrangements Annual Report 2009-10

## Working together to keep children safe

The most serious sexual and violent offenders in Norfolk are closely monitored and managed by agencies working together to keep the public safe.

These offenders are managed by the Norfolk Multi-Agency Public Protection Arrangements (MAPPA). Led by Probation, Police and the Prison Service, MAPPA also involves organisations such as Children's Services, Housing, Health Trusts and Victim Support.

Professionals and experts from relevant organisations come together at regular MAPPA meetings, held across the county, to discuss offenders' cases – sharing information and reviewing their risk to victims and society at large.

MAPPA in Norfolk plays a key role in protecting the county's most vulnerable children. These can include child victims, children of offenders, or, in a small minority of cases, children who have committed serious crimes.

In an attempt to protect all children, MAPPA will often impose licence conditions prohibiting child sexual offenders from having any contact with anyone under the age of 18 and from going

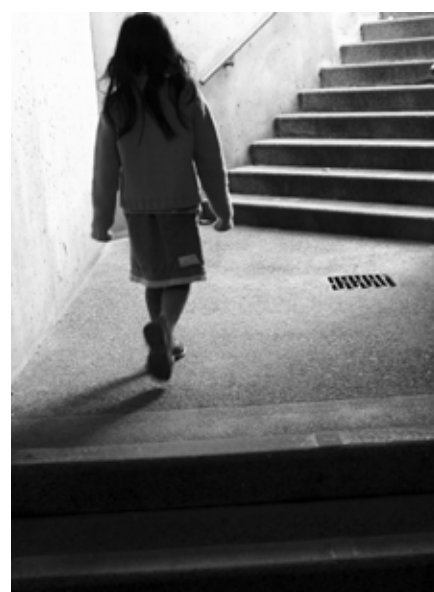
anywhere near a park, playground or school. The offender is then monitored to make sure he or she keeps to these rules, through police visits, probation supervision and a variety of other methods, including police surveillance.

Child victims are also protected by release licence conditions imposed on an offender, often discussed and agreed by MAPPA, after consideration of the child's needs and requests. These may include a ban on any contact with the child or from living in the same town.

Norfolk's most vulnerable children, who may be the subject of child protection or care proceedings, benefit from the attendance of social workers from Children's Services at MAPPA meetings.

A key part of managing offenders in the community is assessing the risks they pose – are they likely to commit another crime or to harm someone? As MAPPA strives to reduce these risks there is often a knock-on effect of reducing risks to children who are in the child protection system.

The presence of Children's Services at MAPPA meetings can reduce the delay in making long-term plans for children in care proceedings,



because social workers are better informed and can easily access risk assessments made by MAPPA.

It is a two-way relationship as Children's Services will share their expert assessments with MAPPA.

The very few young offenders who fall into the remit of MAPPA because of their sexual or violent offending have been better managed because Children's Services have been able to access specialist resources through their contact with experts from the different organisations who contribute to MAPPA.



**Martin Graham**



**Phil Gormley**



**Adrian Smith**

Welcome to the MAPPA Annual Report 2010.

First and foremost, you can be assured that Probation, Police and Prison services in Norfolk are working hard to protect the public by effectively managing the county's most high risk offenders.

In the nine years since the creation of the Multi-Agency Public Protection Arrangements, we have made significant progress in our pursuit to work together to protect the communities we serve.

This report outlines how the three key organisations – Norfolk & Suffolk Probation Trust, Norfolk Constabulary and HM Prison Service, supported by other statutory agencies such as councils and health trusts – work closely together. Protecting the public from harm remains our number one priority and we continue to share information and agree robust plans to reduce the risks posed to the public.

With so many different partner agencies working together, MAPPA has access to a range of tools to protect the public from high risk offenders. These include probation offending programmes, placing offenders in probation hostels, as well as imposing

curfews and restrictions on the movements of offenders. The report also provides an insight into how Norfolk Constabulary are keeping children safe by protecting them from online offenders. There is also a feature on how Norfolk's newest prison, HMP Bure, works with offenders to reduce any potential risk an offender may pose before being released into the community.

Serious sexual and violent crime can be devastating for victims, and although the vast majority of incidents are unpredictable, we constantly strive to improve our joint service to ensure that all people in Norfolk receive the best possible protection from harm.

**Martin Graham, Chief Executive, Norfolk & Suffolk Probation Trust**

**Phil Gormley, Chief Constable, Norfolk Constabulary**

**Adrian Smith, Regional Custodial Services Manager, HMPS**



**By Trevor Williams, regional Director of Offender Management for the East of England.**

In introducing the MAPPA annual report last year, I stressed my belief that MAPPA lies at the heart of what the National Offender Management Service (NOMS) does, as public protection, reducing re-offending and effective partnership working were all key aims of the agency. We focused on four key areas during 2009/10:

- Promoting and giving priority to safeguarding children
- Implementing the recommendations from the external investigation into the London case of Dano Sonnex (Despite Norfolk not being directly involved, the investigation made recommendations to all Probation Trusts)
- Further developing the victim focus of MAPPA work, where necessary
- Achieving greater prison involvement in MAPPA work

During 2009/10 I took an active interest in the developments of MAPPA, not least in my role as commissioner of offender management services from two of the responsible authorities:

prisons and probation. I very much welcomed the continued commitment of MAPPA Strategic Management Boards (SMBs) to ensure effective information exchange and joint risk management of cases where the risk of serious further offending was high and valued the work of the regional public protection group chaired by Probation.

A member of my commissioning team was tasked with strengthening prison practice in relation to safeguarding children and we have now developed the role of the public protection leads in every prison in the region and will be providing them with specific safeguarding training.

We have successfully filled the post of regional public protection officer which has allowed us to take a more detailed look at the challenges we face in delivering the actions mandated by the revised MAPPA Guidance and this has informed decisions for the coming year. Additional funds have, as a consequence, been allocated from the regional budget to assist the functioning of MAPPA SMBs across the region. Funding has also been contributed to support a regional approach to Serious Case Reviews.

As a consequence of the Sonnex case, Probation Areas were required to give regular assurances that resources were being effectively targeted at the highest risk cases and these returns are being scrutinised at a regional level.

Following the completion of second round of Offender Management Inspections conducted by HM Inspectorate of Probation (HMIP), direct work with victims was generally found to be an area of strength in the region. However five of the six Probation Areas were recommended to continue to attend to the perspectives and concerns of victims in work with offenders so this featured prominently in a regional workshop to progress the

recommendations and the action plans Trusts have put in place.

I have placed a particular focus on the implementation of the ViSOR database over the last year to ensure that this valuable information exchange mechanism is being used properly and to its full potential. Following recent diagnostic work plans are in place to improve the use of ViSOR in both the prison and probation settings during 2010/11.

We have also been focusing at a regional level on the risks and needs of indeterminate sentenced prisoners and promoting initiatives to ensure that their sentences are planned as effectively as possible to permit well managed release under supervision where appropriate. The support of MAPPA in this regard is appreciated.

The new financial year has brought significant changes: we have a new Government and ministerial team in the Ministry of Justice; our six probation areas have become five Trusts; and cost saving is an ever more significant priority. In this climate, local multi-agency collaboration makes even more sense. I am therefore determined to do what I can to ensure that the relevant agencies are empowered to play a full part in MAPPA and will be looking for models of good practice in this endeavour locally. My focus for the coming year will thus be on:

Developing the capacity to conduct independent and effective serious case reviews to assist all MAPPA partners in learning lessons from those cases in the event of re-offending by offenders posing a risk of serious harm to the public Continuing to embed ViSOR into routine probation and prison operations Encouraging development to ensure that, in the highest risk cases, the MAPPA processes facilitate the commitment of the necessary expertise and resources across all agencies.

## What is MAPPA?

- MAPPA are a set of arrangements to manage the risk posed by certain sexual and violent offenders. They bring together the Police, Probation and Prison Services in Norfolk into what is known as the MAPPA Responsible Authority.

- A number of other agencies are under a duty to co-operate with the Responsible Authority. These include: Children's Services, Adult Social Services, Health Trusts and Authorities, Youth Offending Teams, local housing authorities and certain registered social landlords, Jobcentre Plus, and electronic monitoring providers.

- **The purposes of MAPPA are:**

- to ensure more comprehensive risk assessments are completed, taking advantage of co-ordinated information sharing across the agencies; and

- to direct the available resources to best protect the public from serious harm.

## How does MAPPA work?

- Offenders eligible for MAPPA are identified and information is gathered/shared about them across relevant agencies. The nature and level of the risk of harm they pose is assessed and a risk management plan is implemented to protect the public.

- In most cases, the offender will be managed under the ordinary arrangements applied by the agency or agencies with supervisory responsibility. A number of offenders, though, require active multi-agency management and their risk management plans will be formulated and monitored via MAPP meetings attended by various agencies.

## Who are MAPPA-eligible offenders?

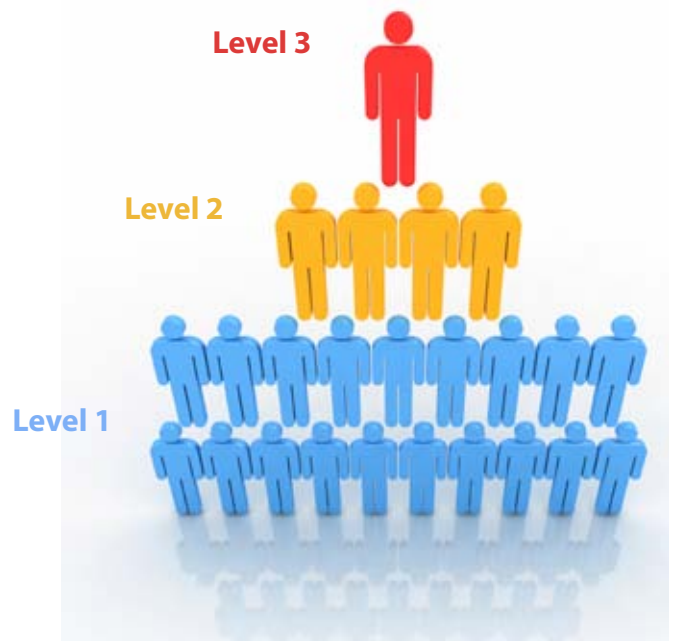
There are 3 categories of offender eligible for MAPPA:

Category 1 - Registered sexual offenders: Sexual offenders who are required to notify the police of their name, address and other personal details and notify the Police of any subsequent changes;

Category 2 - Violent offenders: Offenders sentenced to imprisonment/detention for 12 months or more, or detained under hospital orders. This category also includes a small number of sexual offenders who do not qualify for registration and offenders disqualified from working with children; and

Category 3 - Other Dangerous Offenders: Offenders who do not qualify under categories 1 or 2 but who currently pose a risk of serious harm, there is a link between the offending and the risk posed, and they require active multi-agency management.

## How are they managed?



There are 3 levels at which offenders are managed which are based upon the level of multi-agency co-operation required to implement the risk management plan effectively. Offenders will be moved up and down levels as appropriate:

Level 1 - Ordinary Management: These offenders are subject to the usual management arrangements applied by whichever agency is supervising them. But this does not rule out information sharing between agencies, via ViSOR and other routes.

Level 2 - Active Multi-agency Management: The risk management plans for these offenders require the active involvement of several agencies via regular multi-agency public protection (MAPP) meetings.

Level 3 - Active Multi-agency Management: As with level 2 but these cases additionally require the involvement of senior officers to authorise the use of special resources, such as police surveillance or specialised accommodation, and/or to provide ongoing senior management oversight.

## MAPPA benefits from Probation merger

### MAPPA Factfile - Did you know?...

- Child sex offenders are subject to registration on the Sex Offenders Register for between one year and life, depending on their sentence
- At the end of March 2010, the prison population stood at almost 85,000
- Around eight in ten of child sex offenders are known to their victims. They are often a member of the family or a friend of the family
- Foreign holidays are only approved in exceptional circumstances for all offenders released from prison on licence
- Offenders living in Approved Premises (Probation accommodation) must comply with a set of rules designed to reduce risk. These include an overnight curfew between 11pm and 9am.
- There are very few female sex offenders

Probation staff make a wide ranging contribution to the work of MAPPA and are highly skilled in assessing the risk offenders present. Whilst the numbers of dangerous offenders and sexual offenders within Norfolk and Suffolk may be few in number NSPT recognises the risk of serious harm that such offenders who live amongst us may present to our communities. Taking a collaborative approach with community based agencies is central to managing the risks those offenders pose and it is proven to achieve results.

Following the creation of the merged Norfolk and Suffolk Probation Trust in April 2010 Norfolk and Suffolk Probation Trust has made a significant commitment towards the future of risk management work by the creation of a Public Protection Directorate. The unit provides a central resource and support framework to this aspect of our work. We work in conjunction with Prisons , Approved Premises and other agencies based in Norfolk and Suffolk to manage and reduce the risk of harm. The Directorate also aims to provide the public, community based agencies and staff with clarity about the Trust's approach to managing offenders presenting different levels of risk of harm, enabling risk led decisions and resources to be targeted effectively.

The newly created Directorate provides the Trust with greater opportunities for working closely together with MAPPA and other agencies and share best practice. We aim to enhance overall performance and increase the potential for creating greater efficiencies. All of this works towards ensuring that the Trust makes an effective contribution to MAPPA through the accurate identification of high risk of harm offenders, that information and our risk assessments are shared across the agencies, dictating the nature and level of the interventions by the Trust and partner agencies.

# Police keep ahead of online offenders



Norfolk Constabulary uses the latest in technology to help to protect the public. This sensitive but vital work is illustrated in a case where officers apprehended a 30 year old man at the centre of a ring of offenders distributing hundreds of indecent images of children using mobile phones. Officers used the latest technology to work to uncover the ring and make a total of nine arrests.

The offender at the centre of the ring posed as three different characters using various chat sites. He posed as a father of four boys, a mother

and a young child to try to find like-minded people. However, due to the quick-thinking hosts of the chat site and the police officers involved, the offenders were quickly apprehended and charged.

Det. Insp. Matt Sharman who headed the Public Protection Unit, said: "It is a really good sign that the hosts of the chat site were so switched on to notice the conversation and to report it.

"This is the first case of its kind certainly in Norfolk where the offender has solely used mobile

phones to distribute and view images.

"Such offenders think they are clever but we are watching them and the message is simple - you will not get away with it.

"Modern technology is moving on and the criminal use of such technology is moving on, but as a Force we have equal knowledge."

As part of the operation, officers discovered more than 250 images in total and the investigation involved seven other Police Forces across the UK.

Jim Gamble, Chief Executive of the Child Exploitation and Online Protection (CEOP) Centre, said: "The images in these photos were real children suffering real abuse. Using technology to share these images - whether by mobile phone or online - leaves a digital footprint which enables law enforcement to locate offenders and bring them to justice. CEOP works with forces across the UK who, like Norfolk Constabulary have demonstrated, will leave no stone unturned in their determination to unearth those individuals who target children for sexual gratification."

---

## IT system helps agencies to manage serious offenders

ViSOR is an IT system for the management of people who pose a serious risk of harm to the public. Since implementation of ViSOR the three MAPPA Responsible Authority agencies - Police, Prison and Probation - are able

to work on the same IT system which enables the sharing of risk assessments and risk management information on individual violent and sex offenders in a timely way to reduce re-offending.

## **What is the role of the Strategic Management Board?**

Senior representatives of each of the agencies involved in MAPPA form a Strategic Management Board (SMB) which meets at least quarterly to monitor the arrangements and direct any necessary improvements.

In Norfolk, the SMB is made up of representatives from the following organisations:

Jobcentre Plus  
Victim Support Norfolk  
Norfolk & Suffolk Probation Trust  
Local Authorities – including Norfolk County Council  
Serco Ltd  
Children's Services  
Norfolk Constabulary  
Stonham Homestay  
Norfolk Youth Offending Team  
Norvic Clinic  
HMP Prison Service

## **The role of Lay Advisers**

The Responsible Authority is required to appoint two lay advisers to sit on the SMB. The lay advisers act as independent yet informed observers; able to pose questions which the professionals closely involved in the work might not think of asking. They also bring to the SMB their understanding and perspective of the local community – where they must reside or have strong links.

## **The view from a Lay Adviser**

By Pat Southgate

I cannot believe that yet another year has gone by. Despite the ever present - and this year - even more pressing concerns about funding, I can report that it has been a year of positive progress and development for MAPPA in Norfolk.

We continue to develop and strengthen the reports presented to the SMB, but sadly continue to experience some difficulties regarding attendance.

We have welcomed back Sarah Wardley - an extremely experienced past SMB Chair from Probation. She has 'hit the ground running' and brings a wealth of knowledge and sound judgement to our team.

We are working collaboratively with our MAPPA colleagues in Suffolk to jointly develop QA standards and processes. This is an exciting opportunity to not only share good practice, but also offers an excellent opportunity to liaise with my fellow Lay Advisers from a neighbouring county.

This year we can also welcome our newly appointed second Lay Adviser Don Stevens. I look forward to working with him and sharing the understanding that I have accumulated over the last few years working with the Norfolk MAPPA team. I am certain that he will be as impressed with the dedication and professionalism of those involved with the Norfolk MAPPA.

# MAPPA statistics...

## Number of MAPPA eligible offenders at 31 March 2010

	Level 1	Level 2	Level 3	TOTAL
<b>Category 1</b> Registered Sexual Offenders	600	9	1	610
<b>Category 2</b> Violent offenders	47	20	3	70
<b>Category 3</b> Other Dangerous Offenders	-	6	-	6

### Returned to custody for breach of licence:

Level 2	11
Level 3	5
Total	16

### Registered Sexual Offenders cautioned or convicted for breach of notification requirements

12

### Sent to custody for breach of Sexual Offences Prevention Order (SOPO)

Level 2	
Level 3	0
Total	0

### Sexual Offences Prevention Orders (SOPOs)

Applied for	0
Interim Order issued	0
Full Order issued	0

## Further data on Registered Sexual Offenders

### \*Total number of registered sexual offenders in Norfolk per 100,00 of population

79.52

\*This figure has been calculated using the 2009 Mid-Year Population Estimate published by the Office for National Statistics on 24 June 2010, excluding those aged less than ten years of age. It is not directly comparable to figures published in previous years.

### Notification Orders

Applied for	0
Interim Order issued	0
Full Order issued	0

### Foreign Travel Orders

Applied for	0
Interim Order issued	0
Full Order issued	0



# Explanation of statistics

The totals of MAPPA eligible offenders, broken down by category, reflects the picture on 31 March 2010, (i.e. a snapshot). The rest of the data covers the period 1 April 2009 and 31 March 2010.

**MAPPA eligible offenders** - there are a number of offenders defined in law as eligible for MAPPA management, because they have committed specified sexual and violent offences and/or currently pose a risk of serious harm, although the majority (x% this year) are actually managed under ordinary agency (Level 1) arrangements rather than via MAPP meetings.

**Registered Sexual Offenders (RSOs)** - those who are required to notify the police of their name, address and other personal details and notify any changes subsequently. Failure to comply with the notification requirements is a criminal offence which carries a maximum penalty of 5 years' imprisonment.

**Violent Offenders** – this category includes violent offenders sentenced to imprisonment/detention for 12 months or more, or detained under hospital orders. It also includes a small number of sexual offenders who do not qualify for registration and offenders disqualified from working with children.

**Other Offenders** – offenders who do not qualify under the other 2 MAPPA eligible categories, but who currently pose a risk of serious harm which requires management via MAPP meetings.

**Breach of licence** - Offenders released into the community following a period of imprisonment of 12 months or more will be subject to a licence with conditions (under probation supervision). If these conditions are not complied with, breach action will be taken and the offender may be recalled to prison.

**Sexual Offences Prevention Order (SOPO)** - a court may make a SOPO at the time of dealing with certain sexual offenders or when the police make a special application on account of the offender's behaviour in the community. The full order lasts for a minimum of 5 years, and can last indefinitely. A SOPO will require the subject to register as a sexual offender and can include conditions, for example to prevent the offender loitering near schools or playgrounds. If the offender fails to comply with (i.e. breaches) the requirements of the order, he can be taken back to court and may be liable to up to 5 years' imprisonment.

**Notification Order** – requires sexual offenders who have been convicted overseas to register with police, in order to protect the public in the UK from the risks that they pose. Police may apply to the court for the order in relation to offenders in or intending to come to the UK.

**Foreign Travel Orders** - prevent offenders with convictions for sexual offences against children from traveling abroad where it is necessary to do so to protect children from the risk of sexual harm.

# MAPPA in action

**The agencies involved in MAPPA in Norfolk work to manage and monitor serious offenders. In these two case studies, we see how the arrangements work in practice.**

**A man in his 30's had a history of domestic violence, racist assaults and violence to others. He had become obsessed with his ex partner, whom he had beaten on numerous occasions in the past.**

He had convictions for assault, Breaches of Restraining Orders and breaches of Harassment Orders and persisted in trying to gain access to his ex-partner with the intention of causing her, her family and her new partner very serious harm.

He had threatened to kill several members of the family and these threats were taken seriously by the Police. He was due to be released from Prison for Breach of a Restraining Order and concerns were raised that he would, once again, attempt to harm his ex-partner. A Level 3 MAPPA was held and a robust risk management plan was put in place, including residence requirements and very restrictive curfew times at a Probation Approved Premises several hundred miles away from the victim and her family.

Rigorous arrangements were made on how he would be transported from Prison to the hostel, and a contingency plan was made to ensure the ex-partner and her family's safety, should he fail to comply with transport arrangements.

Following release from Prison the offender failed to comply with the risk management plan and the contingency plan was put into action. The potential victims were removed to a place of safety until the offender was apprehended some 36 hours later.

An emergency recall was requested from the Home Office, and when he appeared before the Court he received a significant custodial sentence for Breach of a Harassment Order, Breach of a Restraining Order, Breach of a Suspended Sentence and Breach of his licence conditions.



**A man in his 40's who had previously been convicted of sexual offences against children, targeted and "groomed" a vulnerable lone parent with two children by offering money and treats to her and the children.**

He attempted to take on a fatherly role with the 7-year-old boy and became very close to him. A member of the public who had concerns about this man reported her concerns to the Police.

A Level 2 meeting was called and information from the Probation Service, the Police and Children's Services was shared. A risk management plan was put in a which included informing the offender that he had been subject to MAPPA management.

A Police Officer and a Social Worker visited the offender to advise him of this. On arrival at the man's home it was discovered that he had the boy at the house and had been sharing his bed with the boy, although no sexual abuse had taken place.

The mother was interviewed by Children's Services and due to her having a degree of learning difficulty, it was assessed that she would not be able to protect her children from this man's influence. The children were taken into care, but the man persisted in trying to contact them. He was arrested and received a custodial sentence for Unlawful Detention of a Child and Breach of a Restraining Order.

# Preparing for release...

**New Category C Prison HMP Bure opened in November 2009. Here we give an insight into how the prison helps to reduce the risk to the public once prisoners are released.**

The team at HMP Bure aim to use all the resources available to reduce the risk to the public posed by individuals who are released at the end of their sentence.

Each offender undergoes a series of assessments in the days following their arrival, and prison staff gather other available information to assist with the assessment. A multi-disciplinary panel meets to consider each prisoner, and to decide on which activities he will be allocated to – both immediately and in the longer term.

This process essentially provides a schedule of work for each offender to follow, aimed at addressing and minimising the risks they pose. These activities focus on the 'seven pathways' to reduce re-offending. They are:

Accommodation  
Education, Training and Employment  
Health  
Drugs and Alcohol  
Finance, Benefit and Debt  
Children and Families  
Attitudes, Thinking and Behaviour

HMP Bure facilitates the reduction and management of risk by offering:

- a dedicated learning resource centre with classes ranging from basic Literacy and Numeracy to Business Administration or Accountancy
- a Physical Education department and healthcare provider delivering courses in self care, healthy living and nutrition, aimed at promoting a healthier lifestyle
- a specific prison and probation staff group working full-time to deliver accredited Offending Behaviour Programmes aimed at modifying thinking, reducing reoffending and increasing awareness of victim harm.
- specialist help with drug related issues by the Counselling, Assessment, Referral, Advice and Throughcare Service (CARATS)
- vocational learning in trades such as electrics, plumbing, barbering, horticulture and painting & decorating
- Each offender's privileges and progression through his sentence is dependant upon his co-operation with the targets that have been set for him, in conjunction with his Probation Officer.
- a multidisciplinary Offender Management Unit comprising staff from prison, probation and third sector providers, ensuring a coordinated approach through regular contact with offenders, Offender Managers and other relevant bodies
- Six months before an individual's release date a resettlement worker will assist with the production of a personalised resettlement plan which aims to bring together all the work done thus far and translate it into a workable plan for the offender's transition back into the community. This is done in liaison with the Offender Manager and concentrates on areas known to reduce the likelihood of re-offending such as accommodation, healthcare services, the job market and reintegration into family life.
- dedicated Public Protection staff providing a focal point for staff and external agencies
- video-link and teleconference equipment to ease facilitation of

---

## Protecting the victims of crime in Norfolk

Norfolk MAPPA works hard to reduce the risks posed to past victims, and to lessen the chance of anyone becoming a victim in the future.

By assessing and managing the risks posed by dangerous offenders, the agencies involved in MAPPA can reduce the likelihood of harm.

At regular Multi-Agency Public Protection Panel meetings (MAPPPs), information is shared between the police, probation, prison and other agencies, and steps are taken to protect those who might be at risk.

Norfolk & Suffolk Probation Trust employs Victim Liaison

Officers, whose role is to provide information to victims. This service involves:

- Providing a point of contact for victims to share their concerns about an offender
- Explaining what the offender's sentence means and how decisions are made
- Informing victims about key points of the sentence, including the release date
- Offering a chance for victims to put forward their views about release conditions – for example that the offender must not approach the victim or live in the same area.

# MAPPA Key Achievements

## **Over the past year, Norfolk MAPPA SMB has:**

- Appointed the MAPPA Manager as the central point of contact for the IT system designed to assist in the management of potentially dangerous offenders (ViSOR). This has streamlined the system and assisted in information sharing between the agencies.
- Established new groups focussing on Training, Performance and Communications which are working towards improved processes and best practice.
- Appointed a second Lay Advisor, strengthening the MAPPA's links with the community it helps to protect.
- Deployed a new (national) training programme in which the MAPPA Manager is actively involved in delivering training to staff in the partnership agencies. This has helped to raise awareness and build expertise across the organisations involved in MAPPA.
- Made the MAPPA Manager instrumental in making key decisions about the transfer of offenders into the local area – meaning that there are tightly controlled mechanisms to decide which offenders can be accepted into Norfolk
- Strengthened its links with the neighbouring Suffolk MAPPA - The Norfolk MAPPA Manager now works collaboratively with the Suffolk MAPPA Manager, encouraging better working links and the sharing of good practice.
- Improved its transparency and accountability - Performance figures are now generated monthly and shared with partners and stakeholders

## **During 2010/11, the Norfolk MAPPA SMB wants to:**

- Deliver training to relevant community groups
- Continue to raise the profile of the work of MAPPA across Norfolk
- Continue to engage with our partner agencies including Childrens Services, Norfolk Constabulary, Housing Companies and our local prisons
- Publicise and engage in the development of the Child Sex Offender Disclosure Scheme
- Write a Diversity Policy

# Norfolk MAPPA contacts directory

---

## Criminal Justice Agencies

### Norfolk Constabulary

OCC, Jubilee House  
Falconers Chase  
Wymondham NR18 OWW  
Telephone 01953 424242

### Norfolk & Suffolk Probation Trust

Centenary House  
Palace Street  
Norwich NR3 1RT  
Telephone 01603 724000

### HM Prison Norwich

Knox Road  
Norwich NR1 4LU  
Telephone 01603 708600

### HM Prison Wayland

Griston  
Thetford IP25 6RL  
Telephone 01953 804100

### HM Prison Bure

Jaguar Drive  
Scottow  
Norwich NR10 5GB  
Tel: 01603 326 000

### Youth Offending Team

Head Office, Norwich  
Telephone 01603 223617

---

## Local Authority Housing Services:

### Broadland District Council

Telephone 01603 431133

### Breckland District Council

Telephone 01362 656870

### South Norfolk District Council

Telephone 01508 533633

### North Norfolk District Council

Telephone 01263 513811

### King's Lynn & West Norfolk Borough Council

Telephone 01553 616200

### Great Yarmouth Borough Council

01493 856100

### Norwich City Council

0844 980 3333

---

## NHS Psychiatric services:

### Norvic Clinic, Norwich

Telephone 01603 439614

### Northgate Hospital, Great Yarmouth

Telephone 01493 337652

### Queen Elizabeth Hospital

Fermoy Unit, King's Lynn  
Telephone 01553 613613

### Hellesdon Hospital, Norwich

Telephone 01603 421421

---

## Community Mental Health Services:

### Norwich:

80 St Stephen's Road, Norwich  
Telephone 01603 201400

### King's Lynn:

North House, Goodwins Road, King's Lynn  
Telephone 01553 815142

### Great Yarmouth:

Northgate Hospital  
Telephone 01493 337973

---

## Adult and Children's Services

### Norfolk County Council

Adult & Children Services  
Telephone 0844 800 8014

