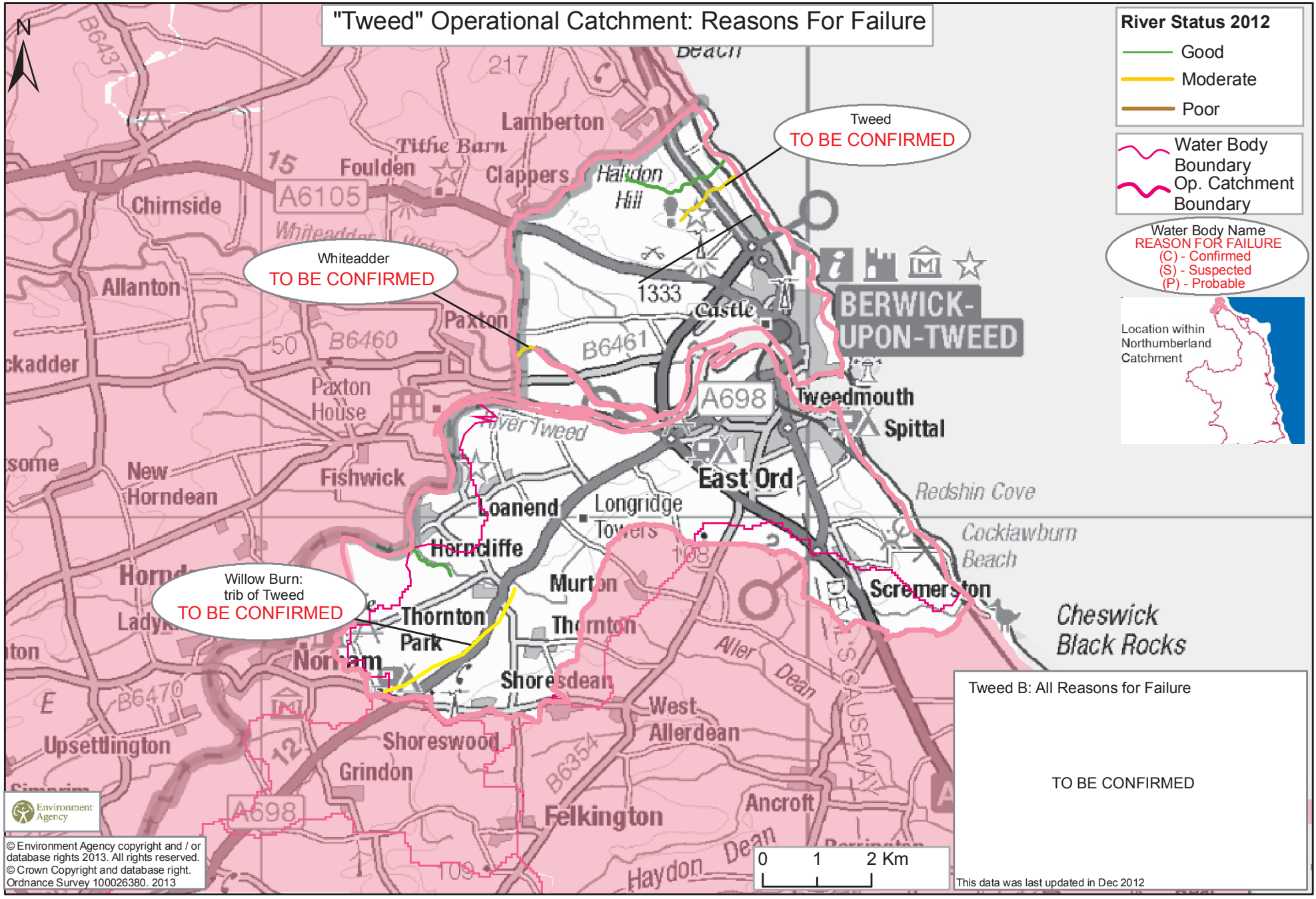


Figure 1. Operational Catchments within the Northumberland Catchment.

Failing Element 2012	Fish	Invertebrates	Phytobenthos	Macrophytes	Flow	Mitigation Measures Ass.	Expt. Judgement	Ph	Ammonia	Phosphate	Copper	Dissolved Oxygen	Benzo Perylene	Tributyltin
Op. Catchment														
Aln	5		1				1							
Berwick to Alnmouth	3	2	2	1	1		7							
Blyth	2	2	3			4	2		1					
Lower Coquet	2	2	4											
Upper Coquet			2	1				3						
Lyne and Druridge Bay	1	2				3	3		2	2		2		
Pont	5		2	1		2			1					
Till	1		4	1	2	3	2				1			
Tweed			1				2							
Wansbeck	7	1	7	1		2			1	1			1	1

Table 1. Summary of WFD Failing elements within the Operational catchments. 2012 Assessment. (Mitigation Measures Ass. refers to 'heavily modified' Water Bodies requiring a programme of physical works to improve their status.)

"Tweed" Operational Catchment: Reasons For Failure



River Status 2012

- Good
- Moderate
- Poor

Water Body Boundary
— Water Body Boundary
— Op. Catchment Boundary

Water Body Name REASON FOR FAILURE
 (C) - Confirmed
 (S) - Suspected
 (P) - Probable



Whiteadder
TO BE CONFIRMED

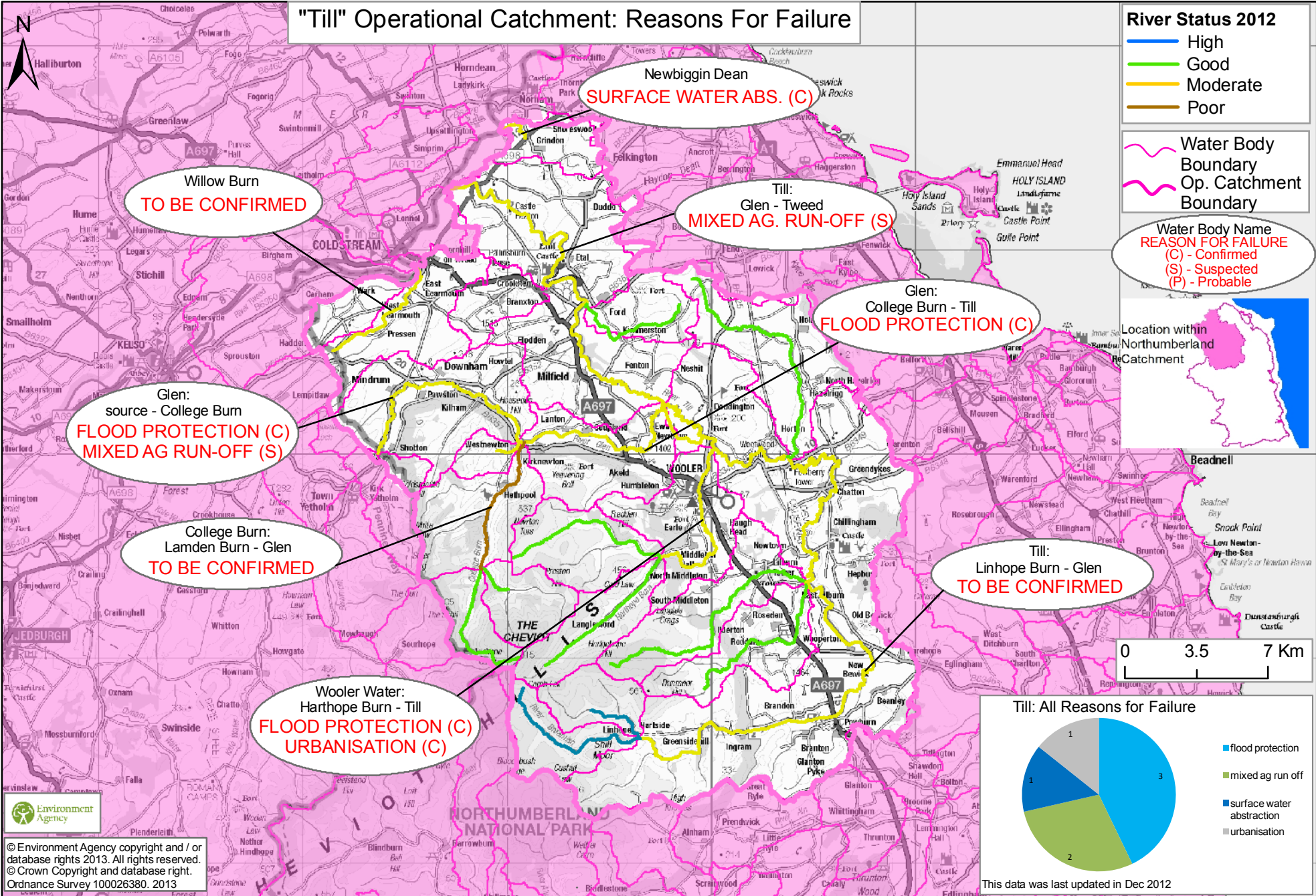
Tweed
TO BE CONFIRMED

Willow Burn: trib of Tweed
TO BE CONFIRMED

Tweed B: All Reasons for Failure
TO BE CONFIRMED



"Till" Operational Catchment: Reasons For Failure

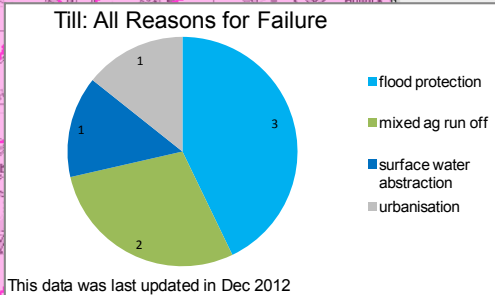
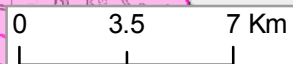
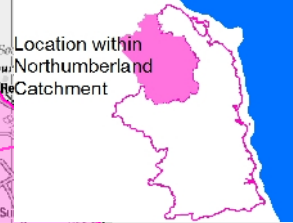


River Status 2012

- High
- Good
- Moderate
- Poor

Water Body Boundary
— Op. Catchment Boundary

Water Body Name
REASON FOR FAILURE
 (C) - Confirmed
 (S) - Suspected
 (P) - Probable



Environment Agency
 © Environment Agency copyright and / or database rights 2013. All rights reserved.
 © Crown Copyright and database right.
 Ordnance Survey 100026380. 2013

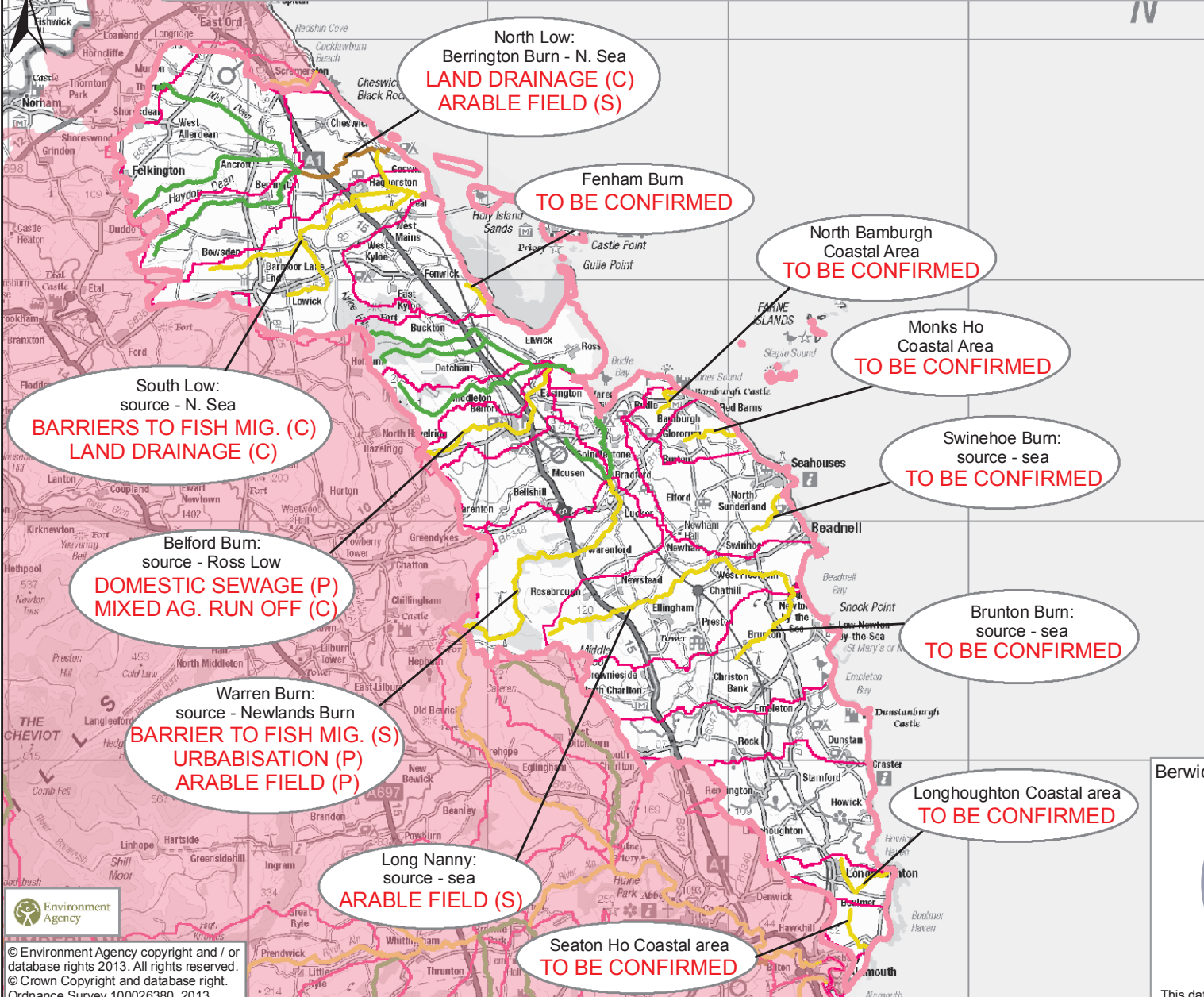
"Berwick to Alnmouth Coastal Area" Operational Catchment: Reasons For Failure

River Status 2012

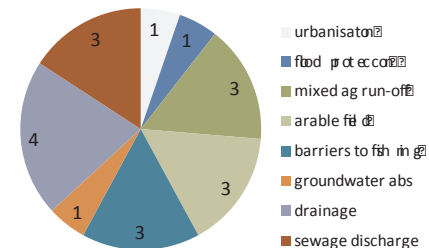
- Good
- Moderate
- Poor
- Bad

- Water Body Boundary
- Op. Catchment Boundary

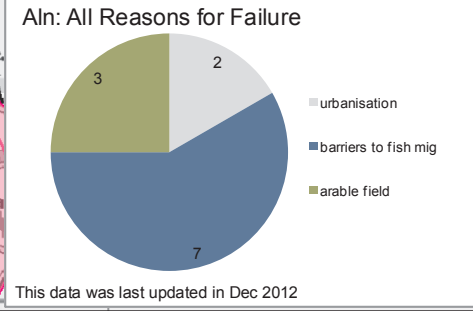
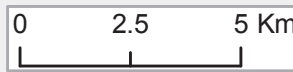
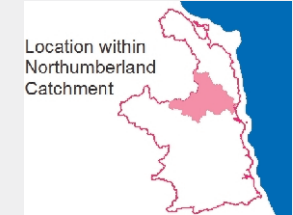
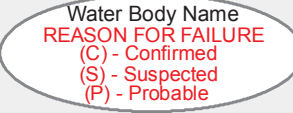
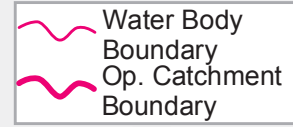
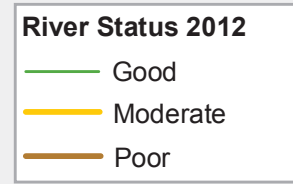
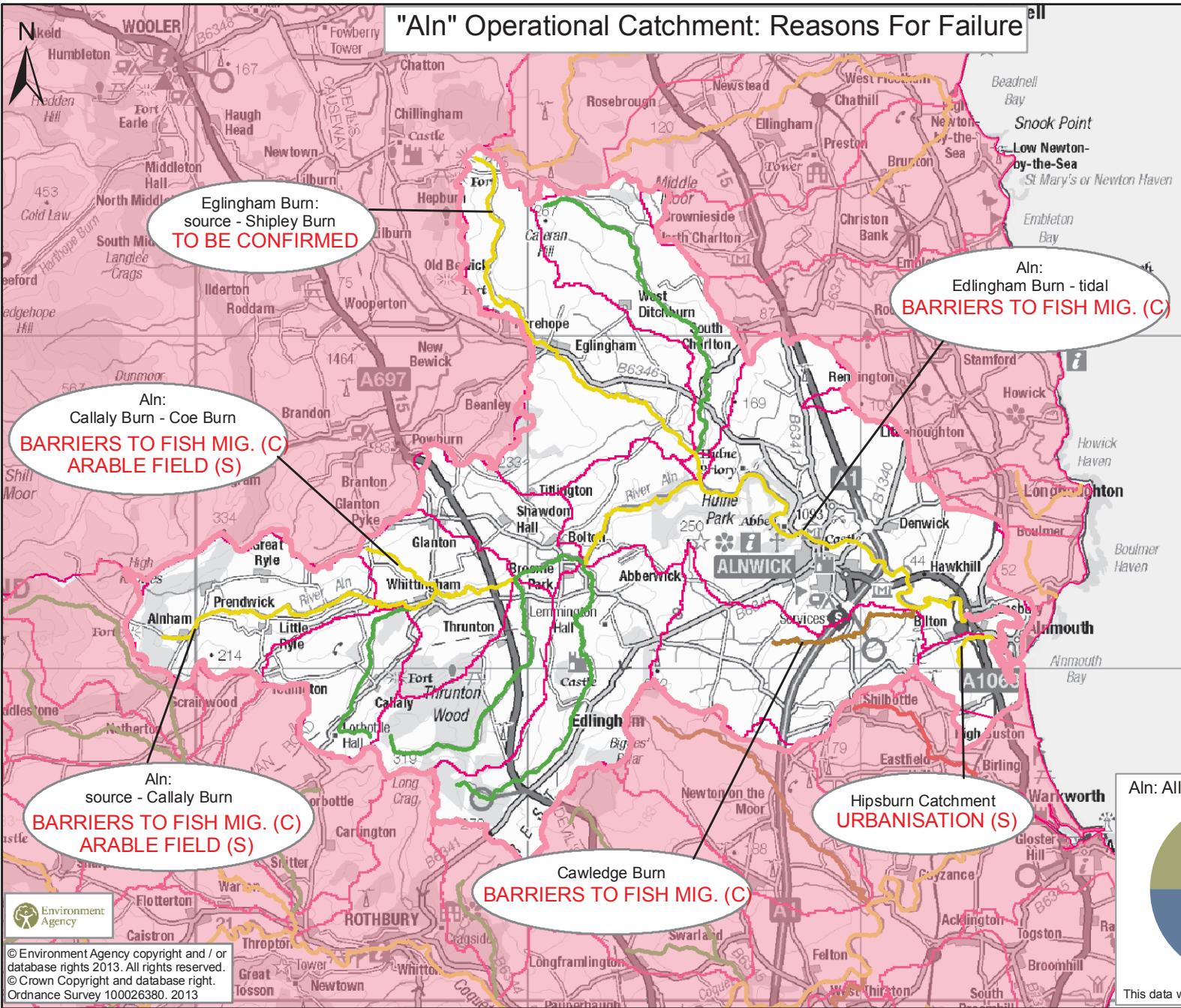
- Water Body Name
REASON FOR FAILURE
- (C) - Confirmed
 - (S) - Suspected
 - (P) - Probable



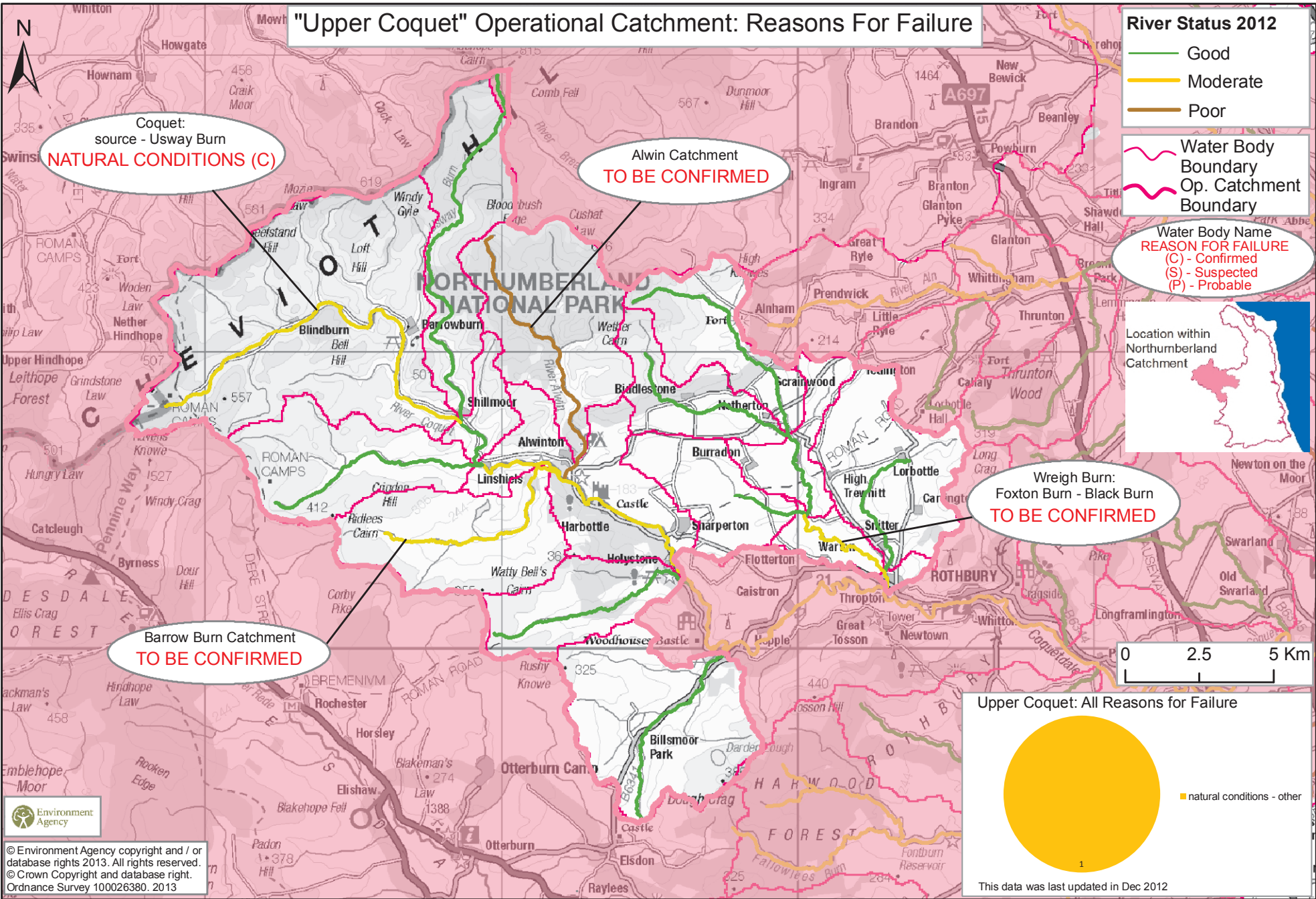
Berwick to Alnmouth: All Reasons for Failure



This data was last updated in Dec 2012



"Upper Coquet" Operational Catchment: Reasons For Failure

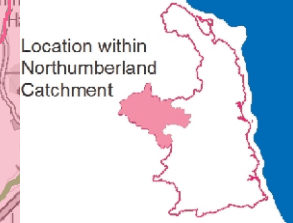


River Status 2012

- Good
- Moderate
- Poor

Water Body Boundary
Op. Catchment Boundary

Water Body Name
REASON FOR FAILURE
 (C) - Confirmed
 (S) - Suspected
 (P) - Probable

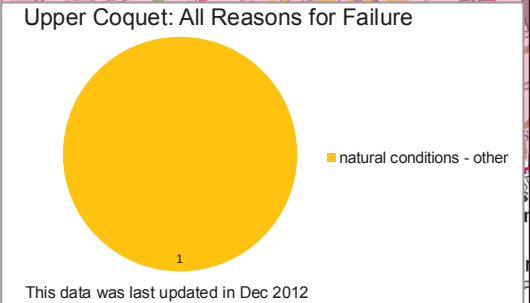
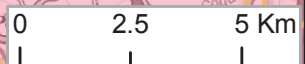


Wreigh Burn:
 Foxtan Burn - Black Burn
TO BE CONFIRMED

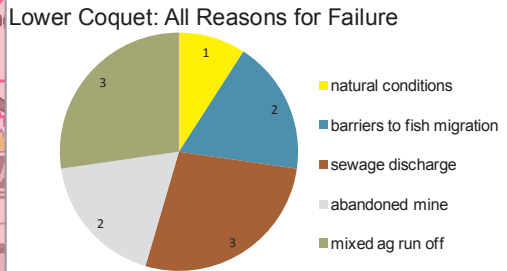
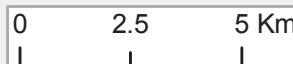
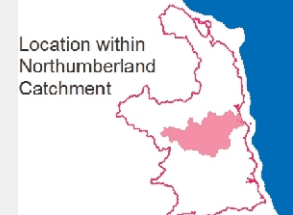
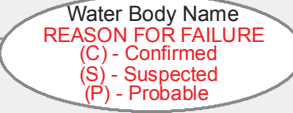
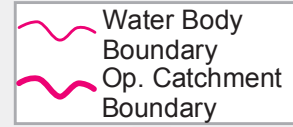
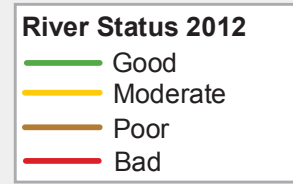
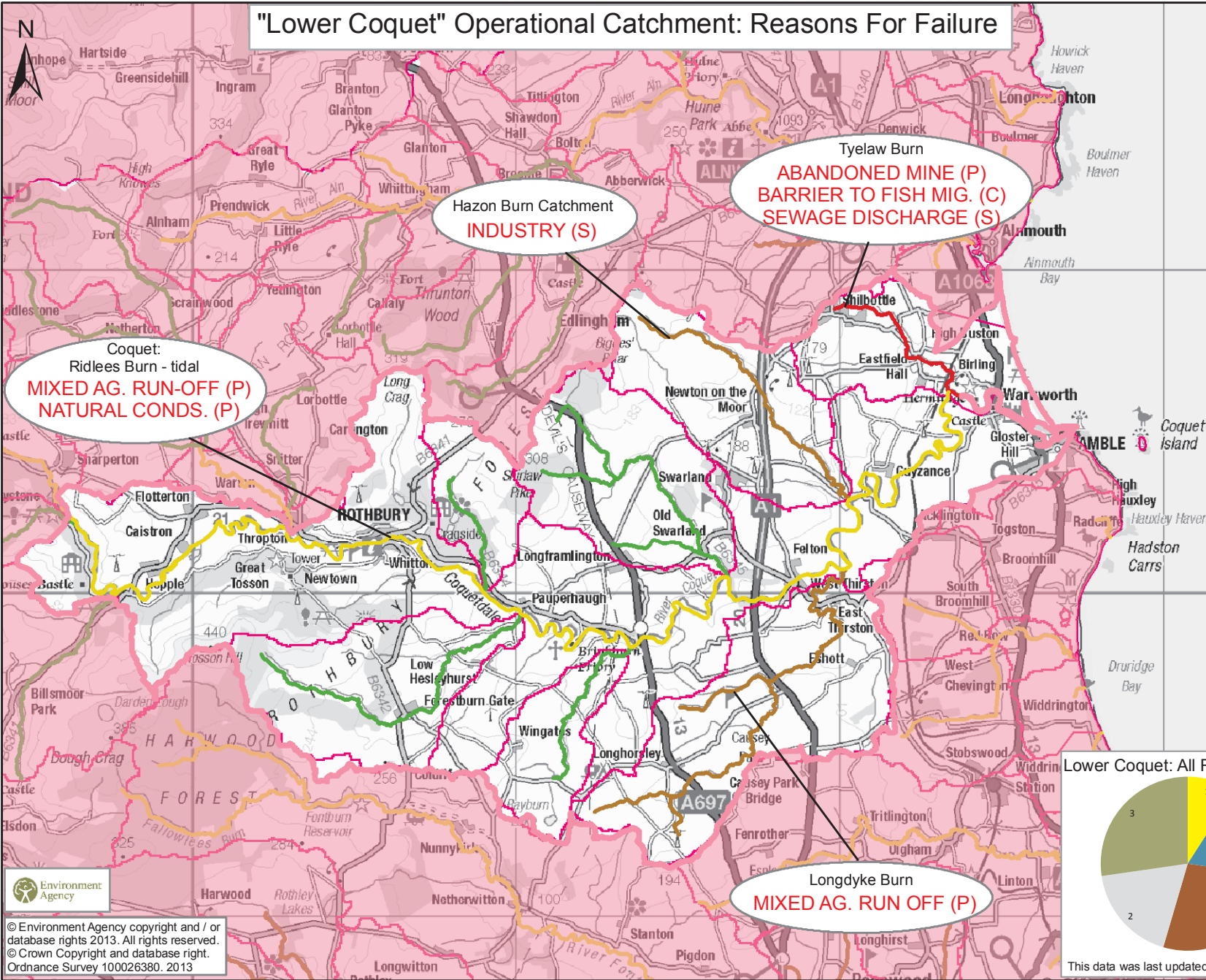
Barrow Burn Catchment
TO BE CONFIRMED

Alwin Catchment
TO BE CONFIRMED

Coquet:
 source - Usway Burn
NATURAL CONDITIONS (C)



"Lower Coquet" Operational Catchment: Reasons For Failure



This data was last updated in Dec 2012

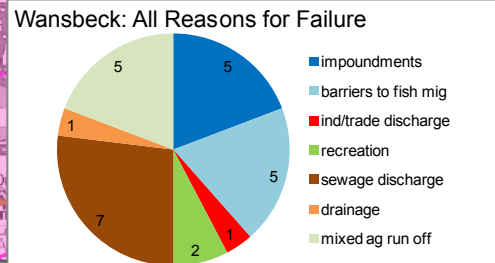
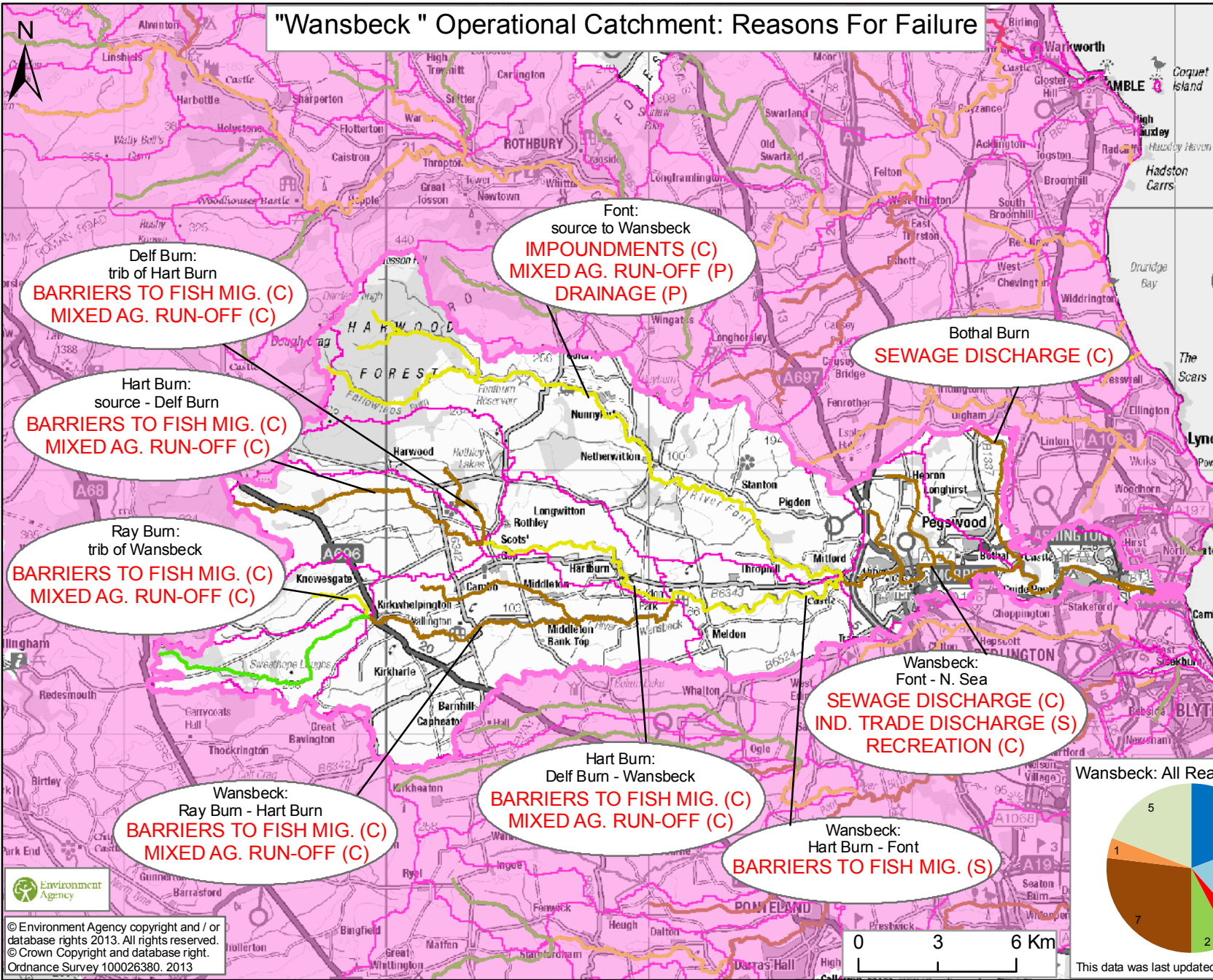
"Wansbeck" Operational Catchment: Reasons For Failure

River Status 2012

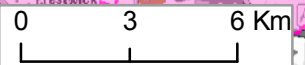
- Good
- Moderate
- Poor
- Bad

Water Body Boundary
Op. Catchment Boundary

Water Body Name
REASON FOR FAILURE
(C) - Confirmed
(S) - Suspected
(P) - Probable

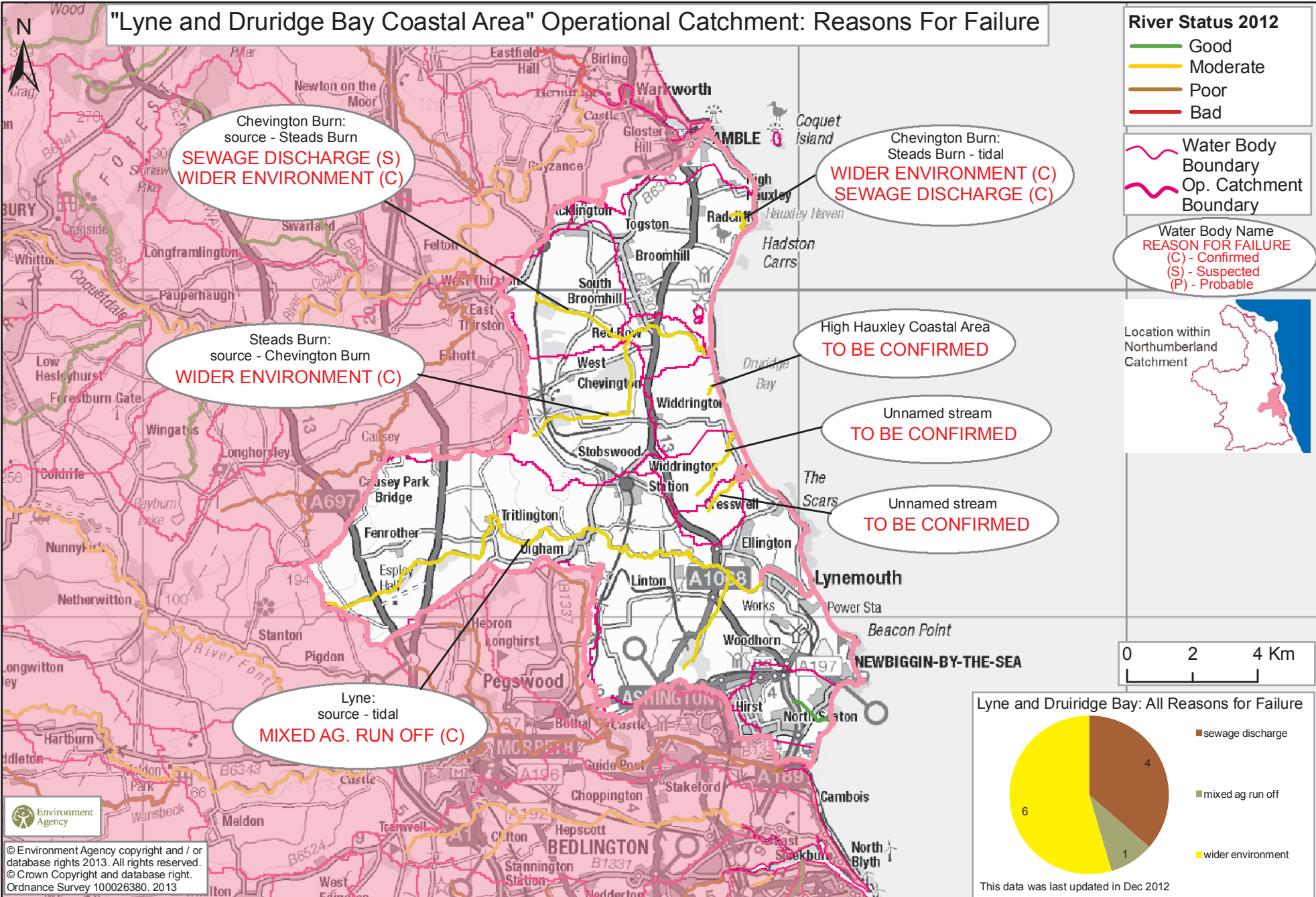


Environment Agency
© Environment Agency copyright and / or database rights 2013. All rights reserved.
© Crown Copyright and database right.
Ordnance Survey 100026380. 2013



This data was last updated in Dec 2012

"Lyne and Druridge Bay Coastal Area" Operational Catchment: Reasons For Failure



Chevington Burn:
source - Steads Burn
SEWAGE DISCHARGE (S)
WIDER ENVIRONMENT (C)

Chevington Burn:
Steads Burn - tidal
WIDER ENVIRONMENT (C)
SEWAGE DISCHARGE (C)

Steads Burn:
source - Chevington Burn
WIDER ENVIRONMENT (C)

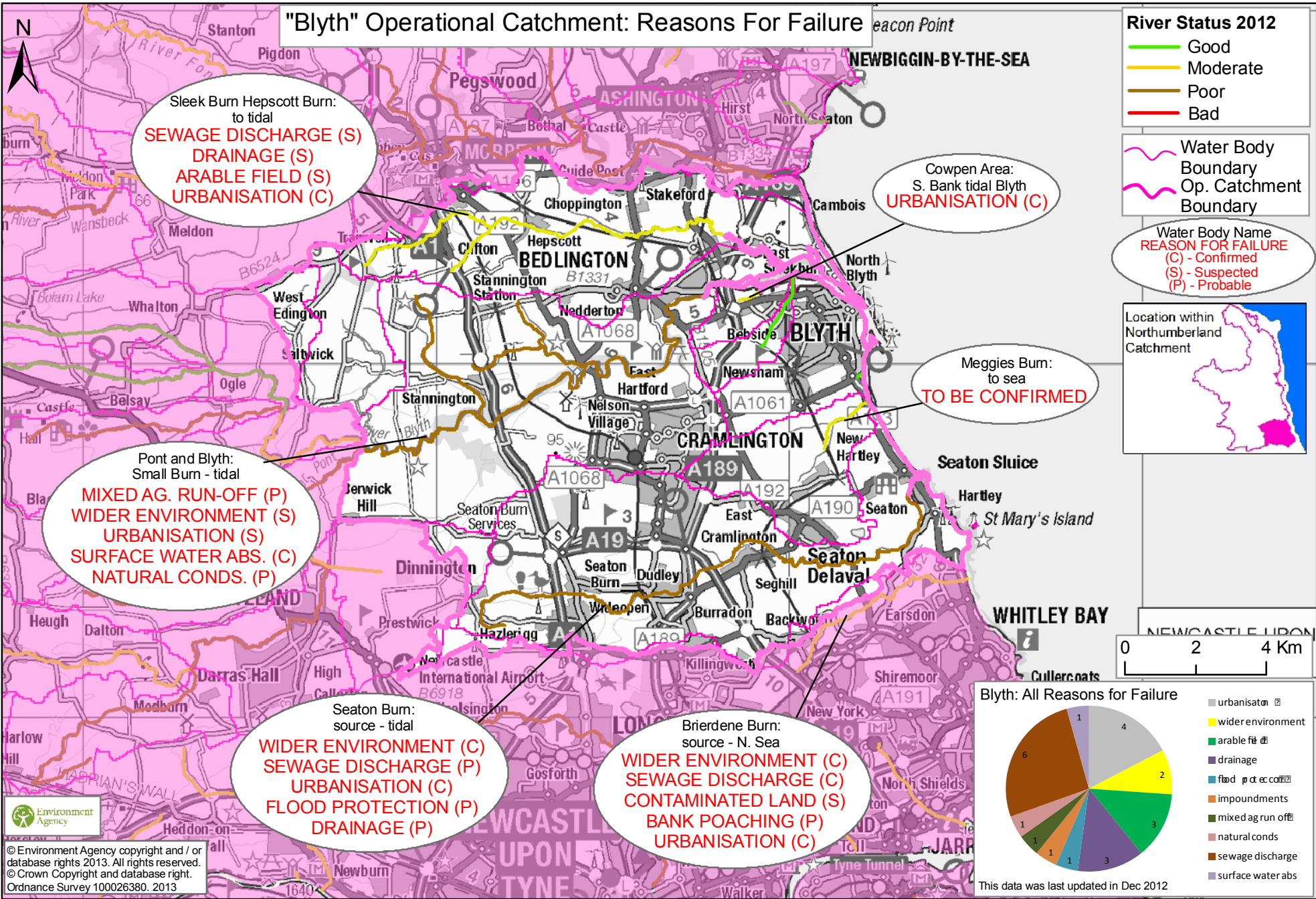
High Hauxley Coastal Area
TO BE CONFIRMED

Unnamed stream
TO BE CONFIRMED

Unnamed stream
TO BE CONFIRMED

Lyne:
source - tidal
MIXED AG. RUN OFF (C)

"Blyth" Operational Catchment: Reasons For Failure



Sleek Burn Hepscott Burn:
to tidal
SEWAGE DISCHARGE (S)
DRAINAGE (S)
ARABLE FIELD (S)
URBANISATION (C)

Cowpen Area:
S. Bank tidal Blyth
URBANISATION (C)

Pont and Blyth:
Small Burn - tidal
MIXED AG. RUN-OFF (P)
WIDER ENVIRONMENT (S)
URBANISATION (S)
SURFACE WATER ABS. (C)
NATURAL CONDS. (P)

Meggies Burn:
to sea
TO BE CONFIRMED

Seaton Burn:
source - tidal
WIDER ENVIRONMENT (C)
SEWAGE DISCHARGE (P)
URBANISATION (C)
FLOOD PROTECTION (P)
DRAINAGE (P)

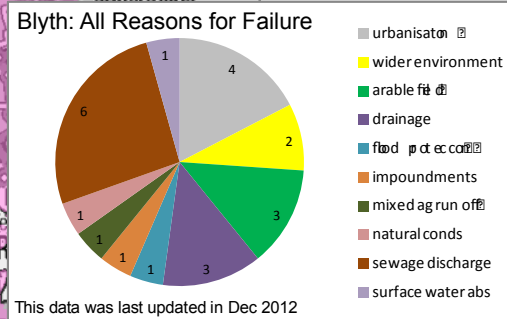
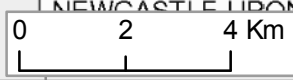
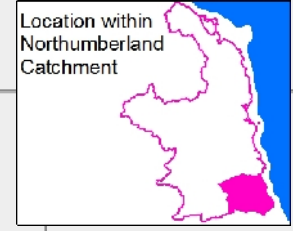
Briedene Burn:
source - N. Sea
WIDER ENVIRONMENT (C)
SEWAGE DISCHARGE (C)
CONTAMINATED LAND (S)
BANK POACHING (P)
URBANISATION (C)

River Status 2012

- Good
- Moderate
- Poor
- Bad

Water Body Boundary
Op. Catchment Boundary

Water Body Name
REASON FOR FAILURE
(C) - Confirmed
(S) - Suspected
(P) - Probable



"Pont" Operational Catchment: Reasons For Failure

