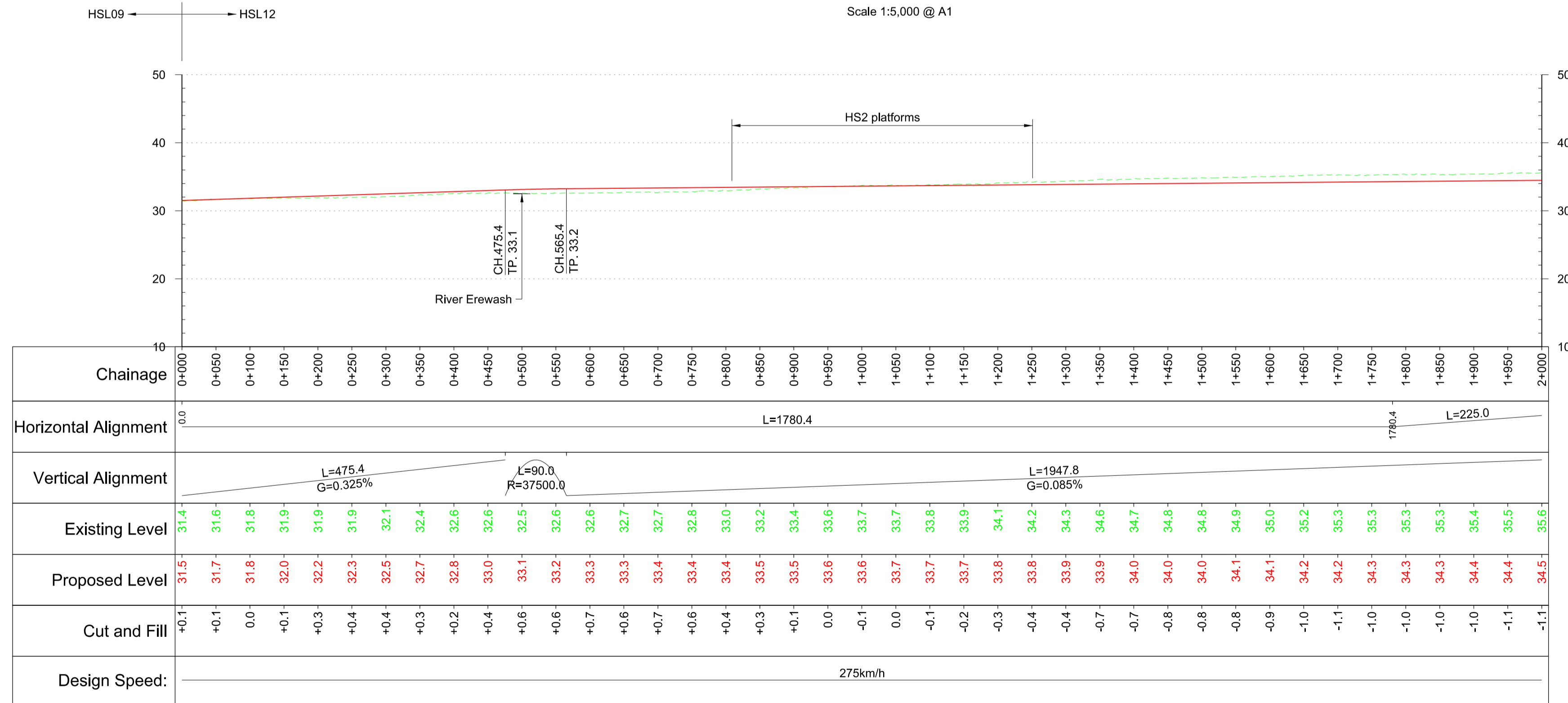
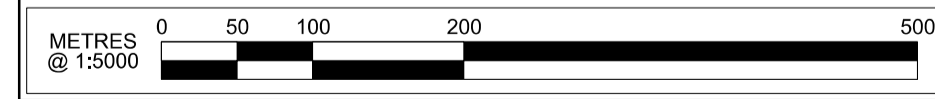


Plan
Scale 1:5,000 @ A1



Profile
Scale H:1:5,000 V:1:500 @ A1

Fit for Condition A



Rev	Description	Drawn	Checked	Con App	HS2 App
P06	Fit for Condition A	VS	RC	TW	
		05/07/13	05/07/13	05/07/13	
P05	Fit for Condition A	GKR	RC	TW	
		01/07/13	28/06/13	28/06/13	
P04	Fit for Condition A	JA	RC	TW	
		21/06/13	21/06/13	21/06/13	
P03	Client's Comments Addressed	GKR	RB	TW	
		12/06/13	11/06/13	11/06/13	
P02	Client's Comments Addressed	GKR	RC	TW	
		28/05/13	24/05/13	24/05/13	

HS2 accepts no responsibility for any circumstances which arise from the reproduction of this document after alteration, amendment or abbreviation or if it is issued in part or issued incompletely in any way.

© Crown Copyright and database right 2012. All rights reserved. Ordnance Survey Licence number 100049190

© Crown Copyright material is reproduced with the permission of Land Registry under delegated authority from the Controller of HMSO. This material was last updated on 2012 and may not be copied, distributed, sold or published without the formal permission of Land Registry. Only an official copy of a title plan or register obtained from the Land Registry may be used for legal or other official purposes.

Scale with caution as distortion can occur.

Key Environmental Features Legend

World Heritage Site	Scheduled Monuments
Ramsar	Registered Parks and Gardens
Special Areas of Conservation	Historical Battlefields
Special Protection Areas	Active and/or Authorised Landfill
SSSI	Historical Landfill
National Nature Reserves	Flood Zones
Area of Outstanding Natural Beauty	
National Park	

Legend

Track Centrelines	Engineering Earthworks
Viaduct	Railway Cutting
Tunnel	Railway Embankment
Fully Retained Cutting/Fill	HS2 Depot/Station Operational Boundary
Major Contour	
Ground Profile	
Track Profile	
Minor Contour	
Node	

Registered in England
Registration No. 06791666
Registered office:
Eland House,
Bressenden Place,
London, SW1E 5DU

Creator/Organator
Mott MacDonald

HS2 Security Classification
INTERNAL

Zone	East Midlands Station
Design Stage	Pre-Consultation
Drawing Title	Route HSL12 Plan and Profile Sheet 1 of 2

Project/Contract	West Midlands to Leeds Route		
Discipline/Function	Railway Track		
Drawn	JFF	Checked	RC
Approved		Approved	TW
Date	09/05/2013	Scale	1:5000
Size		Size	A1
Drawing No.	C321-MMD-RT-DPP-170-551201		
Rev.	P06		