

**Population in custody  
monthly tables  
January 2009  
England and Wales**

Ministry of Justice  
Statistics bulletin

Published 27 February 2009

## Population in custody January 2009 - Key points

### Population in custody

- The population in custody on 31 January 2009 was 82,487, 1 per cent more than a year earlier. The population in prisons was 82,075, in Secure Training Centres (STCs) it was 228, and in Secure Children's Homes (SCHs) it was 184.

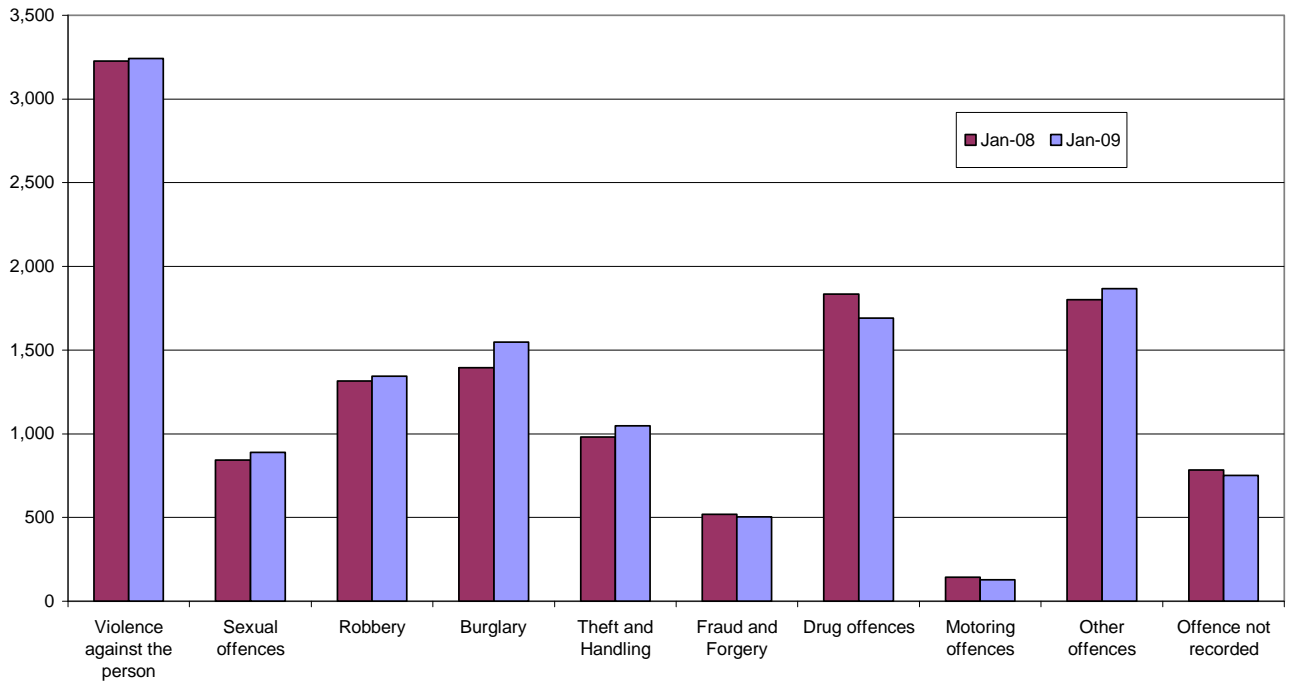
### Population in prison

- The male prison population increased by 2 per cent to 77,812 and the female prison population decreased 4 per cent to 4,263 in January 2009.
- The remand population in prison increased by 1 per cent to 12,908 in January 2009 compared to January 2008. Within this total, the untried population increased 4 per cent to 8,341 and the convicted unsentenced population down 5 per cent, to 4,567.
- Amongst the remand population the largest percentage increases since January 2008 were seen in burglary, robbery and sexual offences, up by 8, 6, and 3 per cent respectively. Decreases were seen in motoring and drug offences, down by 18 and 9 per cent respectively.
- There were 67,473 sentenced<sup>(1)</sup> prisoners at 31 January 2009, an increase of 2 per cent from a year earlier. The largest proportionate increase since January 2008 was for those serving indeterminate sentences (Life sentences and Indeterminate sentences for Public Protection) which increased by 14 per cent.
- Amongst the sentenced<sup>(1)</sup> prison population violence against the person, sexual offences and robbery saw the largest percentage increases, up by 6, 5, and 3 per cent respectively from January 2008. The number of people serving sentences for motoring offences saw a decrease since January 2008, down by 19 per cent.
- The adult population in prison was 70,424 at 31 January 2009, an increase of 2 per cent from a year earlier. Over the same time period the 15 to 17 year olds fell 1 per cent to 2,222 and the young adult prison population was 9,429 at 31 January 2009.
- The prison population was 110 per cent of the 'In Use CNA' (74,669) at 31 January 2009.

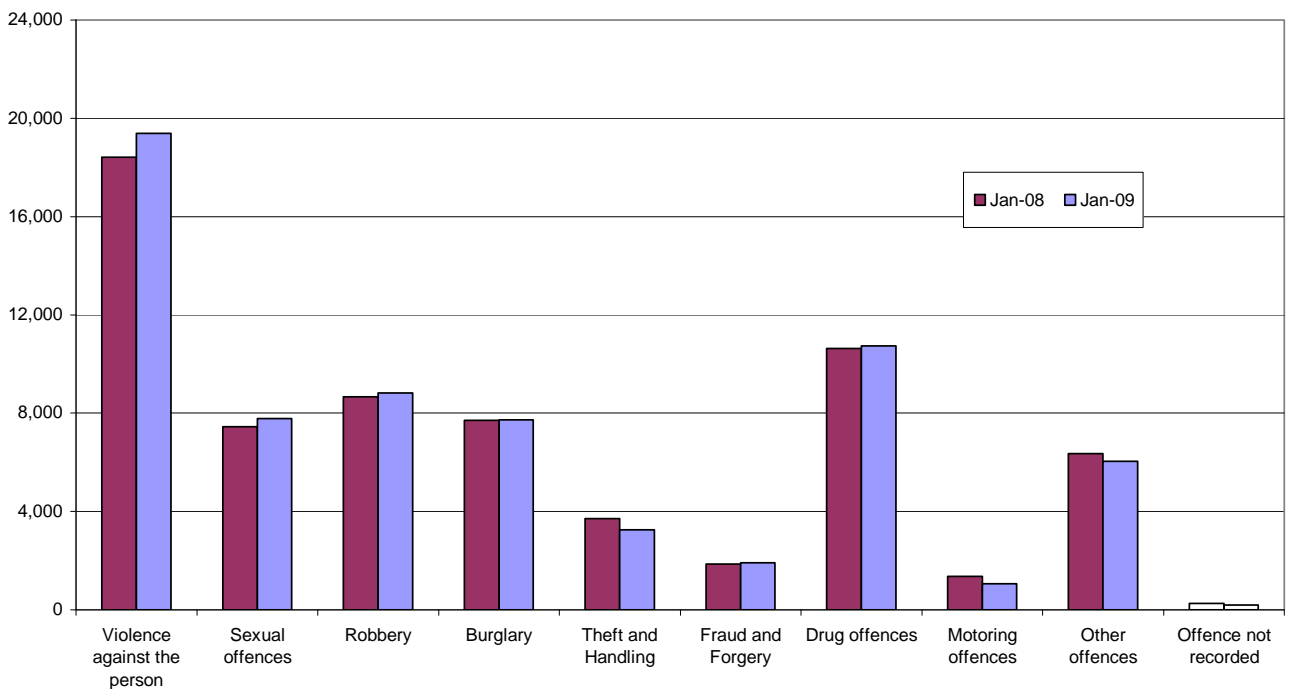
---

(1) Includes recalls and excludes fine defaulters

**Figure A: Remand population by offence group**



**Figure B: Immediate custodial sentenced population by offence group**



## NOTES

### Data sources and quality

The data presented in this brief are drawn from the prison administrative IT systems. Although care is taken when processing and analysing the returns, the detail collected is subject to the inaccuracies inherent in any large-scale recording system. While the figures shown have been checked as far as practicable, they should be regarded as approximate and not necessarily accurate to the last whole number shown in the tables. They are fit to be used for purposes of looking at trends and for comparing the relative magnitude of components.

The prison population information has been drawn from two prison sources. The first source is the routine provision by prison establishments of records of the numbers of persons held in custody at the end of each month, broadly subdivided according to age, sex, custody type and sentence length. The records are collated and processed centrally, to produce the main estimates of the end of month population presented. The second source is the electronically held details for individual inmates such as date of birth, sex, religion, ethnic origin, custody type, offence, and reception and discharge dates and, for sentenced prisoners, sentence length. These data are collected on a central computer database and are used to produce the analyses by offence group and individual year of age. They form the basis of detailed population breakdowns, supplementing the aggregates derived from the first source, to which they are scaled for consistency. A new more detailed method of scaling this information was developed in 2004.

Because the detailed population breakdowns have been scaled and also rounded to the nearest whole number, individual components may not sum to the totals.

Information on the population in STCs and SCHs has been supplied by the Youth Justice Board.

All figures are provisional pending publication of the annual Offender Management Caseload Statistics.

### Definitions

Population in custody - this includes those held in prison establishments, police cells under Operation Safeguard, secure training centres (STCs) and secure children's homes (SCHs). This is a change to previous outputs (notably Prison Population Monthly Brief and Prison Statistics England and Wales) where the reference to 'population in custody' just covered those held in prison establishments and police cells. All coverage is for England and Wales.

Population in prison – this includes those held in prisons in England and Wales, including the three removal centres of Dover, Haslar and Lindholme.

Sentenced population – this includes those sentenced to an immediate custodial sentence and fine defaulters.

Immediate custodial sentence – this does not include fine defaulters.

Adult prisoners – these are prisoners aged 21 years and over.

Young adults – these are prisoners aged 18 to 20, but including 21 year old prisoners who were aged 20 or under at conviction who have not been reclassified as part of the adult population

Indeterminate sentences – these cover life sentences and indeterminate sentences for public protection (IPP).

### **Contact points for further information**

Current and previous editions of this publication are available for download at <http://www.justice.gov.uk/publications/populationincustody.htm> . Future reports will be published on a monthly basis. Spreadsheet files of the tables contained in this document are also available for download from this address.

Press enquiries should be directed to the Ministry of Justice press office:

Tel: 020 3334 3536

Other enquiries about these statistics should be directed to:

Ministry of Justice  
Offender Management and Sentencing – Analytical Services  
2<sup>nd</sup> Floor Fry Building  
2 Marsham Street  
London  
SW1P 4DF  
Tel: 020 7035 3470

General enquiries about the statistical work of the Ministry of Justice can be e-mailed to: [statistics.enquiries@justice.qsi.gov.uk](mailto:statistics.enquiries@justice.qsi.gov.uk)

General information about the official statistics system of the UK is available from [www.statistics.gov.uk](http://www.statistics.gov.uk)

© Crown copyright  
Produced by the Ministry of Justice

Alternative formats are available on request from [statistics.enquiries@justice.qsi.gov.uk](mailto:statistics.enquiries@justice.qsi.gov.uk)

**Table 1: Population in custody: by type of custody and sex**

	Jan-08			Jan-09			Percentage change 2008 to 2009		
	Males	Females	Total	Males	Females	Total	Males	Females	Total
<b>All population in custody, of which</b>	<b>77,026</b>	<b>4,566</b>	<b>81,592</b>	<b>78,100</b>	<b>4,387</b>	<b>82,487</b>	<b>1</b>	<b>-4</b>	<b>1</b>
Prisons	76,458	4,434	80,892	77,812	4,263	82,075	2	-4	1
Police cells	250	0	250	0	0	0	*	*	*
SCHs	166	47	213	145	39	184	-13	*	-14
STCs	152	85	237	143	85	228	-6	0	-4
<b>All population in prison, of which</b>	<b>76,458</b>	<b>4,434</b>	<b>80,892</b>	<b>77,812</b>	<b>4,263</b>	<b>82,075</b>	<b>2</b>	<b>-4</b>	<b>1</b>
<b>Remand</b>	<b>11,920</b>	<b>922</b>	<b>12,842</b>	<b>12,062</b>	<b>846</b>	<b>12,908</b>	<b>1</b>	<b>-8</b>	<b>1</b>
untried	7,466	548	8,014	7,773	568	8,341	4	4	4
convicted unsentenced	4,454	374	4,828	4,289	278	4,567	-4	-26	-5
<b>Under sentence</b>	<b>63,074</b>	<b>3,437</b>	<b>66,511</b>	<b>64,241</b>	<b>3,349</b>	<b>67,590</b>	<b>2</b>	<b>-3</b>	<b>2</b>
Fine defaulter	82	9	91	105	12	117	28	*	29
Less than or equal to 6 months	4,991	517	5,508	4,483	429	4,912	-10	-17	-11
Greater than 6 months to less than 12 months	2,354	238	2,592	2,227	199	2,426	-5	-16	-6
12 months to less than 4 years	21,788	1,232	23,020	22,547	1,304	23,851	3	6	4
4 years or more (excluding Indeterminate sentences)	23,606	1,107	24,713	23,159	1,033	24,192	-2	-7	-2
Indeterminate sentences	10,253	334	10,587	11,721	372	12,093	14	11	14
<b>Non-criminal prisoners</b>	<b>1,464</b>	<b>75</b>	<b>1,539</b>	<b>1,509</b>	<b>68</b>	<b>1,577</b>	<b>3</b>	<b>-9</b>	<b>2</b>
<b>All adult population in prison, of which</b>	<b>65,295</b>	<b>3,934</b>	<b>69,229</b>	<b>66,633</b>	<b>3,791</b>	<b>70,424</b>	<b>2</b>	<b>-4</b>	<b>2</b>
<b>Remand</b>	<b>9,600</b>	<b>804</b>	<b>10,404</b>	<b>9,765</b>	<b>725</b>	<b>10,490</b>	<b>2</b>	<b>-10</b>	<b>1</b>
untried	6,083	473	6,556	6,348	488	6,836	4	3	4
convicted unsentenced	3,517	331	3,848	3,417	237	3,654	-3	-28	-5
<b>Under sentence</b>	<b>54,344</b>	<b>3,058</b>	<b>57,402</b>	<b>55,468</b>	<b>3,002</b>	<b>58,470</b>	<b>2</b>	<b>-2</b>	<b>2</b>
Fine defaulter	79	9	88	101	12	113	28	*	28
Less than or equal to 6 months	3,729	427	4,155	3,403	354	3,756	-9	-17	-10
Greater than 6 months to less than 12 months	1,778	210	1,988	1,630	170	1,800	-8	-19	-9
12 months to less than 4 years	17,276	1,069	18,345	17,981	1,134	19,115	4	6	4
4 years or more (excluding Indeterminate sentences)	22,008	1,030	23,038	21,389	978	22,367	-3	-5	-3
Indeterminate sentences	9,475	313	9,788	10,964	355	11,318	16	13	16
<b>Non-criminal prisoners</b>	<b>1,351</b>	<b>72</b>	<b>1,423</b>	<b>1,400</b>	<b>64</b>	<b>1,464</b>	<b>4</b>	<b>-11</b>	<b>3</b>
<b>All 15-17 year olds in prison, of which</b>	<b>2,180</b>	<b>63</b>	<b>2,243</b>	<b>2,171</b>	<b>52</b>	<b>2,222</b>	<b>0</b>	<b>-18</b>	<b>-1</b>
<b>Remand</b>	<b>471</b>	<b>20</b>	<b>491</b>	<b>501</b>	<b>15</b>	<b>516</b>	<b>6</b>	<b>*</b>	<b>5</b>
untried	307	13	320	338	10	348	10	*	9
convicted unsentenced	165	7	171	163	5	168	-1	*	-2
<b>Under sentence</b>	<b>1,706</b>	<b>43</b>	<b>1,749</b>	<b>1,667</b>	<b>36</b>	<b>1,703</b>	<b>-2</b>	<b>*</b>	<b>-3</b>
Fine defaulter	0	0	0	0	0	0	*	*	*
Less than or equal to 6 months	418	14	432	378	8	387	-9	*	-11
Greater than 6 months to less than 12 months	232	7	240	214	6	220	-8	*	-8
12 months to less than 4 years	867	14	881	857	18	876	-1	*	-1
4 years or more (excluding Indeterminate sentences)	120	7	127	145	2	147	21	*	16
Indeterminate sentences	70	0	70	72	2	74	2	*	5
<b>Non-criminal prisoners</b>	<b>3</b>	<b>0</b>	<b>3</b>	<b>3</b>	<b>0</b>	<b>3</b>	<b>*</b>	<b>*</b>	<b>*</b>
<b>All young adults<sup>1</sup> in prison, of which</b>	<b>8,983</b>	<b>437</b>	<b>9,420</b>	<b>9,008</b>	<b>421</b>	<b>9,429</b>	<b>0</b>	<b>-4</b>	<b>0</b>
<b>Remand</b>	<b>1,849</b>	<b>98</b>	<b>1,947</b>	<b>1,796</b>	<b>106</b>	<b>1,902</b>	<b>-3</b>	<b>8</b>	<b>-2</b>
untried	1,076	62	1,138	1,087	70	1,157	1	12	2
convicted unsentenced	772	36	809	709	36	745	-8	*	-8
<b>Under sentence</b>	<b>7,024</b>	<b>336</b>	<b>7,360</b>	<b>7,106</b>	<b>311</b>	<b>7,417</b>	<b>1</b>	<b>-8</b>	<b>1</b>
Fine defaulter	3	0	3	4	0	4	*	*	*
Less than or equal to 6 months	845	76	920	701	67	769	-17	-11	-16
Greater than 6 months to less than 12 months	344	21	365	382	23	405	11	*	11
12 months to less than 4 years	3,645	149	3,794	3,709	152	3,860	2	2	2
4 years or more (excluding Indeterminate sentences)	1,478	70	1,548	1,625	53	1,678	10	-24	8
Indeterminate sentences	708	21	729	685	15	700	-3	*	-4
<b>Non-criminal prisoners</b>	<b>110</b>	<b>3</b>	<b>113</b>	<b>106</b>	<b>4</b>	<b>110</b>	<b>-4</b>	<b>*</b>	<b>-3</b>

<sup>1</sup> Young adults are those aged 18 - 20 and those 21 year olds who were aged 20 or under at conviction who have not been reclassified as part of the adult population

\* Indicates that one or both of the comparative numbers are less than 50 which could give rise to misleading percentage changes

**Data Sources and Quality**

These figures have been drawn from administrative IT systems which, as with any large scale recording system, are subject to possible errors with data entry and processing. See Data Sources and Quality section of report for more information.

**Table 2: Population in prison by offence - remand and immediate custodial sentence**

	Jan-08		Jan-09		Percentage change 2008 to 2009	
	Remand	Immediate custodial sentence	Remand	Immediate custodial sentence	Remand	Immediate custodial sentence
<b>All prisoners</b>	<b>12,842</b>	<b>66,420</b>	<b>12,908</b>	<b>67,473</b>	<b>1</b>	<b>2</b>
Violence against the person	3,227	18,411	3,269	19,543	1	6
Sexual offences	842	7,446	869	7,811	3	5
Robbery	1,316	8,660	1,392	8,893	6	3
Burglary	1,396	7,716	1,511	7,794	8	1
Theft and Handling	980	3,711	976	3,434	0	-7
Fraud and Forgery	518	1,864	517	1,893	0	2
Drug offences	1,835	10,641	1,676	10,680	-9	0
Motoring offences	142	1,360	117	1,102	-18	-19
Other offences	1,802	6,344	1,836	6,135	2	-3
Offence not recorded	785	268	744	189	-5	-29
<b>All male prisoners</b>	<b>11,920</b>	<b>62,992</b>	<b>12,062</b>	<b>64,136</b>	<b>1</b>	<b>2</b>
Violence against the person	3,048	17,644	3,086	18,706	1	6
Sexual offences	832	7,396	858	7,764	3	5
Robbery	1,256	8,358	1,332	8,558	6	2
Burglary	1,341	7,516	1,454	7,580	8	1
Theft and Handling	859	3,299	878	3,046	2	-8
Fraud and Forgery	420	1,597	442	1,682	5	5
Drug offences	1,682	9,636	1,540	9,780	-8	1
Motoring offences	139	1,338	116	1,083	-17	-19
Other offences	1,653	5,956	1,683	5,760	2	-3
Offence not recorded	691	253	674	177	-2	-30
<b>All female prisoners</b>	<b>922</b>	<b>3,428</b>	<b>846</b>	<b>3,337</b>	<b>-8</b>	<b>-3</b>
Violence against the person	179	766	183	836	2	9
Sexual offences	10	50	11	47	*	*
Robbery	60	302	61	336	1	11
Burglary	55	200	57	214	3	7
Theft and Handling	121	412	98	388	-19	-6
Fraud and Forgery	98	267	75	211	-23	-21
Drug offences	152	1,005	136	899	-10	-11
Motoring offences	3	22	1	19	*	*
Other offences	149	388	154	375	3	-3
Offence not recorded	93	15	71	12	-24	*

**Table 2: Population in prison by offence - remand and immediate custodial sentence**

	Jan-08		Jan-09		Percentage change 2008 to 2009	
	Remand	Immediate custodial sentence	Remand	Immediate custodial sentence	Remand	Immediate custodial sentence
<b>All adult prisoners</b>	<b>10,404</b>	<b>57,314</b>	<b>10,490</b>	<b>58,357</b>	<b>1</b>	<b>2</b>
Violence against the person	2,571	15,803	2,622	16,869	2	7
Sexual offences	731	7,028	758	7,393	4	5
Robbery	786	6,495	883	6,650	12	2
Burglary	1,093	6,577	1,172	6,560	7	0
Theft and Handling	815	3,133	815	2,998	0	-4
Fraud and Forgery	502	1,813	490	1,836	-2	1
Drug offences	1,602	9,854	1,462	9,844	-9	0
Motoring offences	105	1,192	97	960	-8	-19
Other offences	1,522	5,203	1,525	5,091	0	-2
Offence not recorded	678	215	665	156	-2	-27
<b>All adult male prisoners</b>	<b>9,600</b>	<b>54,265</b>	<b>9,765</b>	<b>55,367</b>	<b>2</b>	<b>2</b>
Violence against the person	2,426	15,180	2,467	16,155	2	6
Sexual offences	723	6,978	751	7,347	4	5
Robbery	742	6,254	841	6,377	13	2
Burglary	1,044	6,394	1,124	6,366	8	0
Theft and Handling	703	2,756	727	2,645	3	-4
Fraud and Forgery	405	1,557	421	1,628	4	5
Drug offences	1,469	8,902	1,338	8,996	-9	1
Motoring offences	102	1,170	96	944	-6	-19
Other offences	1,396	4,871	1,400	4,763	0	-2
Offence not recorded	591	203	600	146	2	-28
<b>All adult female prisoners</b>	<b>804</b>	<b>3,049</b>	<b>725</b>	<b>2,990</b>	<b>-10</b>	<b>-2</b>
Violence against the person	145	624	155	714	7	14
Sexual offences	8	50	7	46	*	*
Robbery	44	241	42	273	*	13
Burglary	49	183	48	194	*	6
Theft and Handling	112	377	88	353	-22	-6
Fraud and Forgery	97	256	69	208	-29	-19
Drug offences	133	952	124	848	-7	-11
Motoring offences	3	22	1	16	*	*
Other offences	126	332	125	328	-1	-1
Offence not recorded	86	11	65	10	-24	*



**Table 2: Population in prison by offence - remand and immediate custodial sentence**

	Jan-08		Jan-09		Percentage change 2008 to 2009	
	Remand	Immediate custodial sentence	Remand	Immediate custodial sentence	Remand	Immediate custodial sentence
<b>All aged 15-17</b>	<b>491</b>	<b>1,749</b>	<b>516</b>	<b>1,703</b>	<b>5</b>	<b>-3</b>
Violence against the person	148	424	150	475	1	12
Sexual offences	20	79	34	78	*	-1
Robbery	144	434	131	474	-9	9
Burglary	41	262	92	257	*	-2
Theft and Handling	32	168	25	120	*	-28
Fraud and Forgery	3	5	3	5	*	*
Drug offences	41	85	32	85	*	0
Motoring offences	5	29	1	20	*	*
Other offences	45	258	42	186	*	-28
Offence not recorded	11	5	6	3	*	*
<b>All males aged 15-17</b>	<b>471</b>	<b>1,706</b>	<b>501</b>	<b>1,667</b>	<b>6</b>	<b>-2</b>
Violence against the person	140	408	145	461	3	13
Sexual offences	20	79	34	77	*	-2
Robbery	142	426	130	463	-8	9
Burglary	41	260	90	252	*	-3
Theft and Handling	31	163	22	120	*	-27
Fraud and Forgery	3	5	3	5	*	*
Drug offences	37	84	30	84	*	0
Motoring offences	5	29	1	20	*	*
Other offences	42	249	39	183	*	-27
Offence not recorded	9	3	6	3	*	*
<b>All females aged 15-17</b>	<b>20</b>	<b>43</b>	<b>15</b>	<b>36</b>	<b>*</b>	<b>*</b>
Violence against the person	9	16	5	14	*	*
Sexual offences	0	0	0	1	*	*
Robbery	2	8	1	11	*	*
Burglary	0	2	1	5	*	*
Theft and Handling	1	5	3	1	*	*
Fraud and Forgery	0	0	0	0	*	*
Drug offences	4	1	2	1	*	*
Motoring offences	0	0	0	0	*	*
Other offences	3	9	3	4	*	*
Offence not recorded	1	2	0	0	*	*

**Table 2: Population in prison by offence - remand and immediate custodial sentence**

	Jan-08		Jan-09		Percentage change 2008 to 2009	
	Remand	Immediate custodial sentence	Remand	Immediate custodial sentence	Remand	Immediate custodial sentence
<b>All young adults<sup>1</sup></b>	<b>1,947</b>	<b>7,357</b>	<b>1,902</b>	<b>7,413</b>	<b>-2</b>	<b>1</b>
Violence against the person	507	2,183	497	2,200	-2	1
Sexual offences	91	338	78	340	-15	1
Robbery	386	1,731	378	1,769	-2	2
Burglary	262	877	247	977	-6	11
Theft and Handling	133	410	136	315	2	-23
Fraud and Forgery	13	46	24	53	*	*
Drug offences	192	702	182	751	-5	7
Motoring offences	31	138	19	122	*	-12
Other offences	236	882	269	857	14	-3
Offence not recorded	96	49	73	30	-24	*
<b>All male young adults<sup>1</sup></b>	<b>1,849</b>	<b>7,021</b>	<b>1,796</b>	<b>7,102</b>	<b>-3</b>	<b>1</b>
Violence against the person	482	2,057	474	2,091	-2	2
Sexual offences	89	338	73	340	-17	1
Robbery	372	1,678	360	1,718	-3	2
Burglary	255	862	239	962	-6	12
Theft and Handling	125	380	129	282	3	-26
Fraud and Forgery	12	35	18	49	*	*
Drug offences	176	650	172	700	-3	8
Motoring offences	31	138	19	119	*	-14
Other offences	216	835	244	814	13	-2
Offence not recorded	91	48	68	28	-26	*
<b>All female young adults<sup>1</sup></b>	<b>98</b>	<b>336</b>	<b>106</b>	<b>311</b>	<b>8</b>	<b>-8</b>
Violence against the person	25	126	23	109	*	-14
Sexual offences	2	0	4	0	*	*
Robbery	14	53	17	51	*	-3
Burglary	6	15	8	15	*	*
Theft and Handling	8	30	7	33	*	*
Fraud and Forgery	1	11	6	4	*	*
Drug offences	16	52	10	51	*	-3
Motoring offences	0	0	0	3	*	*
Other offences	20	47	25	43	*	*
Offence not recorded	6	1	5	2	*	*

<sup>1</sup> Young adults are those aged 18 - 20 and those 21 year olds who were aged 20 or under at conviction who have not been reclassified as part of the adult population

\* Indicates that one or both of the comparative numbers are less than 50 which could give rise to misleading percentage changes

**Data Sources and Quality**

These figures have been drawn from administrative IT systems which, as with any large scale recording system, are subject to possible errors with data entry and processing. See Data Sources and Quality section of report for more information.

**Table 3: Young population in prison: by type of custody and sex**

31 January 2009

	15	16	17	Total Under 18	18	19	20	21	Total Young Adults <sup>1</sup>
<b>All young population in prisons, of which</b>									
<b><i>Prisoners on remand</i></b>	<b>40</b>	<b>145</b>	<b>331</b>	<b>516</b>	<b>591</b>	<b>628</b>	<b>626</b>	<b>57</b>	<b>1,902</b>
untried	25	90	233	<b>348</b>	360	359	398	41	<b>1,157</b>
convicted unsentenced	15	55	98	<b>168</b>	231	269	228	16	<b>745</b>
<b><i>Prisoners under sentence</i></b>	<b>154</b>	<b>507</b>	<b>1,043</b>	<b>1,703</b>	<b>1,470</b>	<b>2,396</b>	<b>2,797</b>	<b>755</b>	<b>7,417</b>
Fine defaulter	0	0	0	<b>0</b>	0	2	2	0	<b>4</b>
Immediate custodial sentence	154	507	1,043	<b>1,703</b>	1,470	2,394	2,795	755	<b>7,413</b>
<b><i>Non-criminal prisoners</i></b>	<b>0</b>	<b>1</b>	<b>2</b>	<b>3</b>	<b>20</b>	<b>28</b>	<b>36</b>	<b>27</b>	<b>110</b>
<b>All young male population in prisons, of which</b>									
<b><i>Prisoners on remand</i></b>	<b>40</b>	<b>145</b>	<b>316</b>	<b>501</b>	<b>561</b>	<b>596</b>	<b>585</b>	<b>55</b>	<b>1,796</b>
untried	25	90	222	<b>338</b>	342	338	368	40	<b>1,087</b>
convicted unsentenced	15	55	93	<b>163</b>	219	258	217	15	<b>709</b>
<b><i>Prisoners under sentence</i></b>	<b>154</b>	<b>507</b>	<b>1,007</b>	<b>1,667</b>	<b>1,401</b>	<b>2,282</b>	<b>2,688</b>	<b>735</b>	<b>7,106</b>
Fine defaulter	0	0	0	<b>0</b>	0	2	2	0	<b>4</b>
Immediate custodial sentence	154	507	1,007	<b>1,667</b>	1,401	2,280	2,686	735	<b>7,102</b>
<b><i>Non-criminal prisoners</i></b>	<b>0</b>	<b>1</b>	<b>2</b>	<b>3</b>	<b>19</b>	<b>27</b>	<b>34</b>	<b>27</b>	<b>106</b>
<b>All young female population in prisons, of which</b>									
<b><i>Prisoners on remand</i></b>	<b>0</b>	<b>0</b>	<b>15</b>	<b>15</b>	<b>30</b>	<b>32</b>	<b>42</b>	<b>2</b>	<b>106</b>
untried	0	0	10	<b>10</b>	18	21	30	1	<b>70</b>
convicted unsentenced	0	0	5	<b>5</b>	13	11	12	1	<b>36</b>
<b><i>Prisoners under sentence</i></b>	<b>0</b>	<b>0</b>	<b>36</b>	<b>36</b>	<b>68</b>	<b>114</b>	<b>109</b>	<b>20</b>	<b>311</b>
Fine defaulter	0	0	0	<b>0</b>	0	0	0	0	<b>0</b>
Immediate custodial sentence	0	0	36	<b>36</b>	68	114	109	20	<b>311</b>
<b><i>Non-criminal prisoners</i></b>	<b>0</b>	<b>0</b>	<b>0</b>	<b>0</b>	<b>1</b>	<b>1</b>	<b>2</b>	<b>0</b>	<b>4</b>

<sup>1</sup> Young adults are those aged 18 - 20 and those 21 year olds who were aged 20 or under at conviction who have not been reclassified as part of the adult population

**Data Sources and Quality**

These figures have been drawn from administrative IT systems, which, as with any large scale recording system, are subject to possible errors with data entry and processing. See Data Sources and Quality section of report for more information.

**Table 4: CNA and population by sex and establishment**

31 January 2009

<b>Establishment</b>	<b>In use CNA<sup>1</sup></b>	<b>Total Population</b>
<b>Males</b>		
Acklington	946	934
Albany	567	559
Altcourse	794	1,221
Ashfield	400	364
Ashwell	599	617
Aylesbury	437	440
Bedford	322	379
Belmarsh	800	859
Birmingham	1,109	1,435
Blantyre House	122	118
Blundeston	481	526
Brinsford	545	555
Bristol	424	607
Brixton	606	727
Buckley Hall	346	376
Bullingdon	879	1,059
Bullwood Hall	180	222
Camp Hill	520	580
Canterbury	195	306
Cardiff	548	774
Castington	400	359
Channings Wood	696	728
Chelmsford	541	683
Coldingley	494	506
Cookham Wood	108	118
Dartmoor	629	645
Deerbolt	449	441
Doncaster	771	1,053
Dorchester	145	218
Dovegate	800	816
Dover	316	308
Durham	594	896
Edmunds Hill	371	365
Elmley	735	952
Erlestoke	470	468
Everthorpe	603	688
Exeter	316	514
Featherstone	663	682
Feltham	762	604
Ford	557	508
Forest Bank	800	1,063
Frankland	733	721
Full Sutton	592	573
Garth	812	819
Gartree	657	654
Glen Parva	668	738
Gloucester	225	288
Grendon/Spring Hill	533	503
Guys Marsh	520	572
Haslar	160	144
Haverigg	622	579
Hewell <sup>1</sup>	1,173	1,360
High Down	999	1,050
Highpoint	842	862
Hindley	515	420
Hollesley Bay	345	332
Holme House	857	879
Hull	723	1,020
Huntercombe	360	300
Kennet	175	338
Kingston (Portsmouth)	175	173
Kirkham	590	569
Kirklevington Grange	283	277
Lancaster Castle	159	241
Lancaster Farms	480	297
Latchmere House	207	197
Leeds	823	1,073
Leicester	210	338
Lewes	623	664
Leyhill	512	489

**Table 4: CNA and population by sex and establishment**

31 January 2009

<b>Establishment</b>	<b>In use CNA<sup>1</sup></b>	<b>Total Population</b>
Lincoln	436	628
Lindholme	1,034	1,115
Littlehey	663	714
Liverpool	1,166	1,223
Long Lartin	452	441
Lowdham Grange	640	680
Maidstone	451	473
Manchester	948	1,175
Moorland Open	260	251
Moorland Closed	740	762
North Sea Camp	318	287
Northallerton	147	203
Norwich	447	489
Nottingham	379	538
Onley	640	628
Parc	838	1,201
Parkhurst	449	482
Pentonville	813	1,098
Peterborough	480	562
Portland	579	612
Preston	453	721
Ranby	969	1,075
Reading	186	225
Risley	1,050	1,085
Rochester	626	605
Rye Hill	600	657
Shepton Mallet	165	189
Shrewsbury	177	272
Stafford	721	717
Standford Hill	462	447
Stocken	779	800
Stoke Heath	574	553
Sudbury	581	569
Swaleside	801	810
Swansea	240	436
Swinfen Hall	604	615
The Mount	747	759
The Verne	560	578
The Wolds	320	389
Thorn Cross	322	252
Usk/Prescoed	320	397
Wakefield	748	736
Wandsworth	1,086	1,612
Warren Hill	222	204
Wayland	955	1,015
Wealstun	505	516
Wellingborough	638	642
Werrington	160	159
Wetherby	342	369
Whatton	776	839
Whitemoor	464	435
Winchester	499	690
Woodhill	641	812
Wormwood Scrubs	1,176	1,194
Wymott	1,081	1,133
<b>TOTAL</b>	<b>70,043</b>	<b>77,812</b>

**Table 4: CNA and population by sex and establishment**

31 January 2009

<b>Establishment</b>	<b>In use CNA<sup>1</sup></b>	<b>Total Population</b>
<b>Females</b>		
Askham Grange	126	105
Bronzeield	450	433
Downview	359	343
Drake Hall	315	219
East Sutton Park	98	86
Eastwood Park	326	322
Foston Hall	283	252
Holloway	500	449
Low Newton	298	311
Morton Hall	392	314
New Hall	393	354
Peterborough	360	372
Send	278	277
Styal	448	426
<b>TOTAL</b>	<b>4,626</b>	<b>4,263</b>
<b>Male and female establishment total</b>	<b>74,669</b>	<b>82,075</b>
<b>Police cells total</b>	<b>*</b>	<b>0</b>
<b>Establishment and police cell total</b>	<b>74,669</b>	<b>82,075</b>

<sup>1</sup> In Use CNA - Certified Normal Accommodation that is available for immediate use, excludes damaged cells, cells affected by building works and cells taken out of use due to staff shortages

<sup>2</sup> HMP Hewell was created by an amalgamation of the three former prisons, Blakenhurst, Brockhill and Hewell Grange on 25 June 2008

\* On 31st January 2009 up to 400 police cells available under operation safeguard which are not included in the CNA figure

**Data Sources and Quality**

These figures have been drawn from administrative IT systems which, as with any large scale recording system, are subject to possible errors with data entry and processing. See Data Sources and Quality section of report for more information.