

**Population in custody  
monthly tables  
February 2009  
England and Wales**

Ministry of Justice  
Statistics bulletin

Published 31 March 2009

## Population in custody February 2009 – Key points

### Population in custody

- The population in custody on 28 February 2009 was 82,993, a rise of 391 from a year earlier. The population in prisons was 82,586 (a rise of 707 from a year earlier), in Secure Training Centres (STCs) it was 227, and in Secure Children's Homes (SCHs) it was 180.

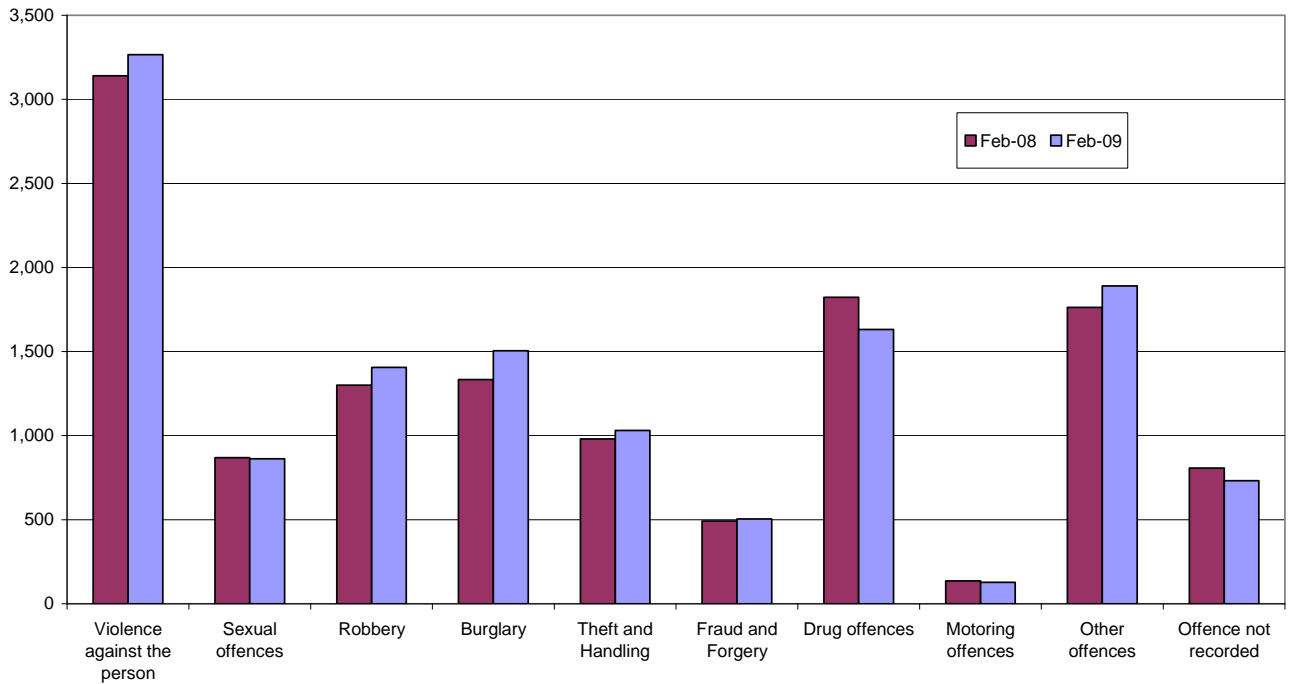
### Population in prison

- The male prison population increased by 1 per cent to 78,257 and the female prison population decreased 3 per cent to 4,329 in February 2009 compared to February 2008.
- The remand population in prison increased by 2 per cent to 12,954 in February 2009 compared to February 2008. Within this total, the untried population increased 5 per cent to 8,366 and the convicted unsentenced population went down 3 per cent, to 4,588.
- Amongst the remand population the largest increases since February 2008 were seen in burglary (172, 13 per cent), violence against the person (124, 4 per cent), robbery (106, 8 per cent) and other offences (127, 7 per cent). The largest decrease was seen in drug offences (down 192, 11 per cent).
- There were 67,944 sentenced<sup>(1)</sup> prisoners at 28 February 2009, an increase of 1 per cent from a year earlier. The largest proportionate increase since February 2008 was for those serving indeterminate sentences (Life sentences and Indeterminate sentences for Public Protection) which increased by 13 per cent. However, the largest proportionate falls were for prisoners serving sentences of less than and equal to 6 months and those serving sentences of greater than 6 and less than 12 months, falling 15 and 10 per cent respectively. These decreases were against a relatively high short-sentenced population a year ago.
- Amongst the sentenced<sup>(1)</sup> prison population the largest increases were for violence against the person (1081, 6 per cent), sexual offences (298, 4 per cent) and robbery (126, 1 per cent) from February 2008. The largest decreases since February 2008 were in those serving sentences for motoring offences (301, 21 per cent), theft and handling (435, 11 per cent) and other offences (417, 6 per cent).
- The adult population in prison was 70,845 at 28 February 2009, an increase of 1 per cent from a year earlier. Over the same time period the 15 to 17 year olds fell 8 per cent to 2,155 and the young adult prison population increased by less than 1 per cent to 9,586 at 28 February 2009.
- The prison population was 111 per cent of the 'In Use CNA' (74,707) at 28 February 2009.

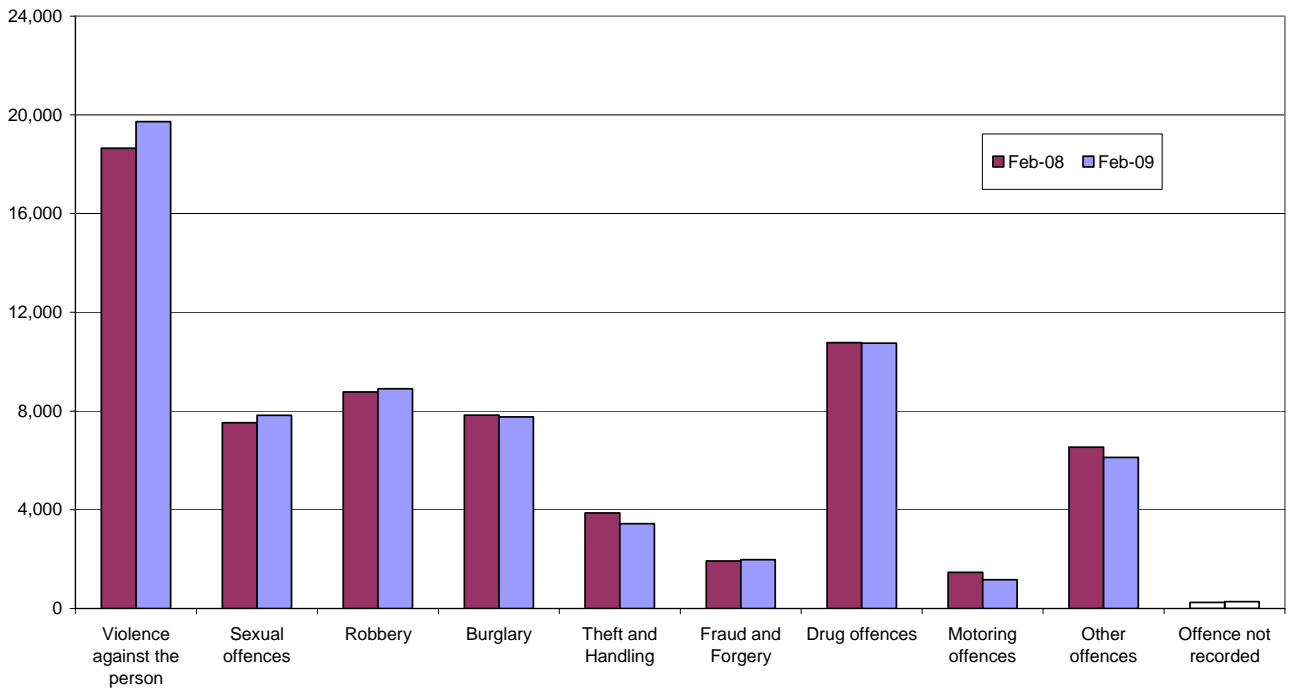
---

(1) Includes recalls and excludes fine defaulters

**Figure A: Remand population by offence group**



**Figure B: Immediate custodial sentenced population by offence group**



## Notes

### Data sources and quality

The data presented in this brief are drawn from the prison administrative IT systems. Although care is taken when processing and analysing the returns, the detail collected is subject to the inaccuracies inherent in any large-scale recording system. While the figures shown have been checked as far as practicable, they should be regarded as approximate and not necessarily accurate to the last whole number shown in the tables. They are fit to be used for purposes of looking at trends and for comparing the relative magnitude of components.

The prison population information has been drawn from two prison sources. The first source is the routine provision by prison establishments of records of the numbers of persons held in custody at the end of each month, broadly subdivided according to age, sex, custody type and sentence length. The records are collated and processed centrally, to produce the main estimates of the end of month population presented. The second source is the electronically held details for individual inmates such as date of birth, sex, religion, ethnic origin, custody type, offence, and reception and discharge dates and, for sentenced prisoners, sentence length. These data are collected on a central computer database and are used to produce the analyses by offence group and individual year of age. They form the basis of detailed population breakdowns, supplementing the aggregates derived from the first source, to which they are scaled for consistency. A new more detailed method of scaling this information was developed in 2004.

Because the detailed population breakdowns have been scaled and also rounded to the nearest whole number, individual components may not sum to the totals.

Information on the population in STCs and SCHs has been supplied by the Youth Justice Board.

All figures are provisional pending publication of the annual Offender Management Caseload Statistics.

### Definitions

Population in custody – this includes those held in prison establishments, police cells under Operation Safeguard, secure training centres (STCs) and secure children's homes (SCHs). This is a change to previous outputs (notably Prison Population Monthly Brief and Prison Statistics England and Wales) where the reference to 'population in custody' just covered those held in prison establishments and police cells. All coverage is for England and Wales.

Population in prison – this includes those held in prisons in England and Wales, including the three removal centres of Dover, Haslar and Lindholme.

Sentenced population – this includes those sentenced to an immediate custodial sentence and fine defaulters.

Immediate custodial sentence – this does not include fine defaulters.

Adult prisoners – these are prisoners aged 21 years and over.

Young adults – these are prisoners aged 18 to 20, but including 21 year old prisoners who were aged 20 or under at conviction who have not been reclassified as part of the adult population

Indeterminate sentences – these cover life sentences and indeterminate sentences for public protection (IPP).

### **Contact points for further information**

Current and previous editions of this publication are available for download at [www.justice.gov.uk/publications/populationincustody.htm](http://www.justice.gov.uk/publications/populationincustody.htm). Future reports will be published on a monthly basis. Spreadsheet files of the tables contained in this document are also available for download from this address.

Press enquiries should be directed to the Ministry of Justice press office:

Tel: 020 3334 3536

Other enquiries about these statistics should be directed to:

Ministry of Justice  
Offender Management and Sentencing – Analytical Services  
2<sup>nd</sup> Floor Fry Building  
2 Marsham Street  
London  
SW1P 4DF  
Tel: 020 7035 3470

General enquiries about the statistical work of the Ministry of Justice can be e-mailed to: [statistics.enquiries@justice.gsi.gov.uk](mailto:statistics.enquiries@justice.gsi.gov.uk)

General information about the official statistics system of the UK is available from [www.statistics.gov.uk](http://www.statistics.gov.uk)

© Crown copyright  
Produced by the Ministry of Justice

Alternative formats are available on request from [statistics.enquiries@justice.gsi.gov.uk](mailto:statistics.enquiries@justice.gsi.gov.uk)

**Table 1: Population in custody: by type of custody and sex**

	Feb-08			Feb-09			Percentage change 2008 to 2009		
	Males	Females	Total	Males	Females	Total	Males	Females	Total
<b>All population in custody, of which</b>	<b>78,014</b>	<b>4,588</b>	<b>82,602</b>	<b>78,551</b>	<b>4,442</b>	<b>82,993</b>	<b>1</b>	<b>-3</b>	<b>0</b>
Prisons	77,425	4,454	81,879	78,257	4,329	82,586	1	-3	1
Police cells	266	0	266	0	0	0	*	*	*
SCHs	173	45	218	145	35	180	-16	*	-17
STCs	150	89	239	149	78	227	-1	-12	-5
<b>All population in prison, of which</b>	<b>77,425</b>	<b>4,454</b>	<b>81,879</b>	<b>78,257</b>	<b>4,329</b>	<b>82,586</b>	<b>1</b>	<b>-3</b>	<b>1</b>
<b>Remand</b>	<b>11,747</b>	<b>899</b>	<b>12,646</b>	<b>12,124</b>	<b>830</b>	<b>12,954</b>	<b>3</b>	<b>-8</b>	<b>2</b>
Untried	7,362	578	7,940	7,820	546	8,366	6	-6	5
Convicted unsentenced	4,385	321	4,706	4,304	284	4,588	-2	-12	-3
<b>Under sentence</b>	<b>64,207</b>	<b>3,478</b>	<b>67,685</b>	<b>64,639</b>	<b>3,433</b>	<b>68,072</b>	<b>1</b>	<b>-1</b>	<b>1</b>
Fine defaulter	88	7	95	122	6	128	39	*	35
Less than or equal to 6 months	5,591	558	6,149	4,739	462	5,201	-15	-17	-15
Greater than 6 months to less than 12 months	2,460	250	2,710	2,231	215	2,447	-9	-14	-10
12 months to less than 4 years	22,094	1,226	23,320	22,581	1,349	23,930	2	10	3
4 years or more (excluding Indeterminate sentences)	23,553	1,104	24,657	23,190	1,034	24,224	-2	-6	-2
Indeterminate sentences	10,421	333	10,754	11,776	367	12,143	13	10	13
<b>Non-criminal prisoners</b>	<b>1,471</b>	<b>77</b>	<b>1,548</b>	<b>1,494</b>	<b>66</b>	<b>1,560</b>	<b>2</b>	<b>-14</b>	<b>1</b>
<b>All adult population in prison, of which</b>	<b>66,030</b>	<b>3,955</b>	<b>69,985</b>	<b>66,981</b>	<b>3,864</b>	<b>70,845</b>	<b>1</b>	<b>-2</b>	<b>1</b>
<b>Remand</b>	<b>9,419</b>	<b>782</b>	<b>10,201</b>	<b>9,759</b>	<b>711</b>	<b>10,470</b>	<b>4</b>	<b>-9</b>	<b>3</b>
Untried	5,915	502	6,417	6,353	467	6,820	7	-7	6
Convicted unsentenced	3,504	280	3,784	3,406	244	3,650	-3	-13	-4
<b>Under sentence</b>	<b>55,256</b>	<b>3,103</b>	<b>58,359</b>	<b>55,840</b>	<b>3,092</b>	<b>58,932</b>	<b>1</b>	<b>0</b>	<b>1</b>
Fine defaulter	84	6	90	121	6	127	44	*	41
Less than or equal to 6 months	4,225	473	4,698	3,617	390	4,007	-14	-17	-15
Greater than 6 months to less than 12 months	1,840	223	2,063	1,654	183	1,836	-10	-18	-11
12 months to less than 4 years	17,522	1,059	18,581	18,020	1,181	19,201	3	12	3
4 years or more (excluding Indeterminate sentences)	21,953	1,029	22,982	21,403	981	22,384	-3	-5	-3
Indeterminate sentences	9,632	313	9,945	11,026	351	11,377	14	12	14
<b>Non-criminal prisoners</b>	<b>1,355</b>	<b>70</b>	<b>1,425</b>	<b>1,382</b>	<b>61</b>	<b>1,443</b>	<b>2</b>	<b>-13</b>	<b>1</b>
<b>All 15 -17 year olds in prison, of which</b>	<b>2,283</b>	<b>65</b>	<b>2,348</b>	<b>2,109</b>	<b>46</b>	<b>2,155</b>	<b>-8</b>	<b>*</b>	<b>-8</b>
<b>Remand</b>	<b>491</b>	<b>22</b>	<b>513</b>	<b>493</b>	<b>12</b>	<b>504</b>	<b>0</b>	<b>*</b>	<b>-2</b>
Untried	332	16	348	341	7	348	3	*	0
Convicted unsentenced	159	7	165	151	5	156	-5	*	-6
<b>Under sentence</b>	<b>1,791</b>	<b>43</b>	<b>1,834</b>	<b>1,613</b>	<b>34</b>	<b>1,648</b>	<b>-10</b>	<b>*</b>	<b>-10</b>
Fine defaulter	0	0	0	0	0	0	*	*	*
Less than or equal to 6 months	472	12	484	376	8	384	-20	*	-21
Greater than 6 months to less than 12 months	235	7	242	203	3	206	-13	*	-15
12 months to less than 4 years	889	17	906	817	15	832	-8	*	-8
4 years or more (excluding Indeterminate sentences)	121	6	127	146	5	151	21	*	18
Indeterminate sentences	75	0	75	71	3	74	-5	*	-1
<b>Non-criminal prisoners</b>	<b>1</b>	<b>0</b>	<b>1</b>	<b>3</b>	<b>0</b>	<b>3</b>	<b>*</b>	<b>*</b>	<b>*</b>
<b>All young adults<sup>1</sup> in prison, of which</b>	<b>9,112</b>	<b>434</b>	<b>9,546</b>	<b>9,167</b>	<b>419</b>	<b>9,586</b>	<b>1</b>	<b>-4</b>	<b>0</b>
<b>Remand</b>	<b>1,837</b>	<b>95</b>	<b>1,932</b>	<b>1,872</b>	<b>107</b>	<b>1,980</b>	<b>2</b>	<b>13</b>	<b>2</b>
Untried	1,115	60	1,175	1,126	72	1,198	1	19	2
Convicted unsentenced	722	34	757	747	35	782	3	*	3
<b>Under sentence</b>	<b>7,160</b>	<b>333</b>	<b>7,492</b>	<b>7,186</b>	<b>307</b>	<b>7,492</b>	<b>0</b>	<b>-8</b>	<b>0</b>
Fine defaulter	4	1	5	1	0	1	*	*	*
Less than or equal to 6 months	894	74	967	747	63	810	-16	-15	-16
Greater than 6 months to less than 12 months	385	19	405	374	30	404	-3	*	0
12 months to less than 4 years	3,683	150	3,833	3,744	153	3,897	2	2	2
4 years or more (excluding Indeterminate sentences)	1,479	69	1,548	1,641	48	1,689	11	*	9
Indeterminate sentences	714	20	734	679	13	692	-5	*	-6
<b>Non-criminal prisoners</b>	<b>115</b>	<b>7</b>	<b>122</b>	<b>109</b>	<b>5</b>	<b>114</b>	<b>-5</b>	<b>*</b>	<b>-7</b>

<sup>1</sup> Young adults are those aged 18 - 20 and those 21 year olds who were aged 20 or under at conviction who have not been reclassified as part of the adult population

\* Indicates that one or both of the comparative numbers are less than 50 which could give rise to misleading percentage changes

**Data Sources and Quality**

These figures have been drawn from administrative IT systems which, as with any large scale recording system, are subject to possible errors with data entry and processing. See Data Sources and Quality section of report for more information.

**Table 2: Population in prison by offence - remand and immediate custodial sentence**

	Feb-08		Feb-09		Percentage change 2008 to 2009	
	Remand	Immediate custodial sentence	Remand	Immediate custodial sentence	Remand	Immediate custodial sentence
<b>All prisoners</b>	<b>12,646</b>	<b>67,590</b>	<b>12,954</b>	<b>67,944</b>	<b>2</b>	<b>1</b>
Violence against the person	3,141	18,647	3,265	19,728	4	6
Sexual offences	869	7,529	862	7,827	-1	4
Robbery	1,300	8,774	1,406	8,900	8	1
Burglary	1,334	7,828	1,506	7,761	13	-1
Theft and Handling	980	3,870	1,031	3,435	5	-11
Fraud and Forgery	491	1,929	504	1,976	3	2
Drug offences	1,823	10,768	1,631	10,753	-11	0
Motoring offences	137	1,464	127	1,163	-7	-21
Other offences	1,763	6,539	1,890	6,122	7	-6
Offence not recorded	807	241	731	279	-9	16
<b>All male prisoners</b>	<b>11,747</b>	<b>64,119</b>	<b>12,124</b>	<b>64,517</b>	<b>3</b>	<b>1</b>
Violence against the person	2,963	17,891	3,091	18,878	4	6
Sexual offences	859	7,480	849	7,777	-1	4
Robbery	1,243	8,470	1,346	8,559	8	1
Burglary	1,283	7,636	1,449	7,552	13	-1
Theft and Handling	862	3,437	910	3,036	5	-12
Fraud and Forgery	401	1,654	430	1,737	7	5
Drug offences	1,676	9,770	1,503	9,843	-10	1
Motoring offences	133	1,438	126	1,144	-5	-20
Other offences	1,624	6,115	1,759	5,741	8	-6
Offence not recorded	703	229	660	250	-6	10
<b>All female prisoners</b>	<b>899</b>	<b>3,471</b>	<b>830</b>	<b>3,427</b>	<b>-8</b>	<b>-1</b>
Violence against the person	178	756	175	851	-2	12
Sexual offences	11	49	13	50	*	*
Robbery	57	304	60	341	5	12
Burglary	51	193	56	209	10	8
Theft and Handling	118	433	121	399	3	-8
Fraud and Forgery	91	275	74	240	-18	-13
Drug offences	147	999	128	910	-13	-9
Motoring offences	4	26	1	19	*	*
Other offences	139	424	131	380	-6	-10
Offence not recorded	104	13	71	28	-32	*

**Table 2: Population in prison by offence - remand and immediate custodial sentence**

	Feb-08		Feb-09		Percentage change 2008 to 2009	
	Remand	Immediate custodial sentence	Remand	Immediate custodial sentence	Remand	Immediate custodial sentence
<b>All adult prisoners</b>	<b>10,201</b>	<b>58,269</b>	<b>10,470</b>	<b>58,805</b>	<b>3</b>	<b>1</b>
Violence against the person	2,461	15,983	2,580	17,023	5	7
Sexual offences	758	7,103	755	7,413	0	4
Robbery	783	6,585	896	6,639	14	1
Burglary	1,051	6,633	1,185	6,503	13	-2
Theft and Handling	836	3,296	849	2,978	2	-10
Fraud and Forgery	480	1,883	470	1,915	-2	2
Drug offences	1,589	9,946	1,408	9,939	-11	0
Motoring offences	111	1,258	105	1,026	-5	-18
Other offences	1,444	5,398	1,563	5,145	8	-5
Offence not recorded	690	182	658	225	-5	23
<b>All adult male prisoners</b>	<b>9,419</b>	<b>55,172</b>	<b>9,759</b>	<b>55,719</b>	<b>4</b>	<b>1</b>
Violence against the person	2,319	15,365	2,436	16,293	5	6
Sexual offences	750	7,054	746	7,364	0	4
Robbery	735	6,344	851	6,366	16	0
Burglary	1,004	6,459	1,135	6,317	13	-2
Theft and Handling	725	2,896	742	2,609	2	-10
Fraud and Forgery	389	1,615	401	1,681	3	4
Drug offences	1,462	9,001	1,297	9,072	-11	1
Motoring offences	107	1,234	104	1,009	-2	-18
Other offences	1,334	5,032	1,456	4,809	9	-4
Offence not recorded	595	172	591	200	-1	16
<b>All adult female prisoners</b>	<b>782</b>	<b>3,097</b>	<b>711</b>	<b>3,086</b>	<b>-9</b>	<b>0</b>
Violence against the person	143	619	145	730	1	18
Sexual offences	8	49	9	49	*	*
Robbery	48	241	45	274	*	14
Burglary	47	174	49	186	*	7
Theft and Handling	110	400	107	370	-3	-8
Fraud and Forgery	91	268	69	234	-24	-13
Drug offences	127	945	111	867	-12	-8
Motoring offences	4	24	1	17	*	*
Other offences	110	366	108	336	-2	-8
Offence not recorded	94	10	67	25	-29	*



**Table 2: Population in prison by offence - remand and immediate custodial sentence**

	Feb-08		Feb-09		Percentage change 2008 to 2009	
	Remand	Immediate custodial sentence	Remand	Immediate custodial sentence	Remand	Immediate custodial sentence
<b>All aged 15-17</b>	<b>513</b>	<b>1,834</b>	<b>504</b>	<b>1,648</b>	<b>-2</b>	<b>-10</b>
Violence against the person	155	456	151	453	-2	-1
Sexual offences	27	80	26	75	*	-7
Robbery	138	457	141	457	3	0
Burglary	52	270	73	269	39	0
Theft and Handling	23	170	18	119	*	-30
Fraud and Forgery	2	4	3	4	*	*
Drug offences	40	99	41	78	*	-21
Motoring offences	2	38	6	16	*	*
Other offences	64	254	43	170	*	-33
Offence not recorded	11	6	2	7	*	*
<b>All males aged 15-17</b>	<b>491</b>	<b>1,791</b>	<b>493</b>	<b>1,613</b>	<b>0</b>	<b>-10</b>
Violence against the person	148	438	147	440	0	0
Sexual offences	27	80	26	74	*	-8
Robbery	138	448	140	448	2	0
Burglary	51	270	72	266	40	-1
Theft and Handling	23	166	17	117	*	-30
Fraud and Forgery	2	4	3	4	*	*
Drug offences	36	97	38	77	*	-20
Motoring offences	2	38	6	16	*	*
Other offences	56	246	41	166	*	-33
Offence not recorded	8	4	2	7	*	*
<b>All females aged 15-17</b>	<b>22</b>	<b>43</b>	<b>12</b>	<b>34</b>	<b>*</b>	<b>*</b>
Violence against the person	7	17	4	13	*	*
Sexual offences	0	0	0	1	*	*
Robbery	0	9	1	10	*	*
Burglary	1	0	1	3	*	*
Theft and Handling	0	4	1	2	*	*
Fraud and Forgery	0	0	0	0	*	*
Drug offences	4	2	3	1	*	*
Motoring offences	0	0	0	0	*	*
Other offences	8	8	2	5	*	*
Offence not recorded	3	2	0	0	*	*

**Table 2: Population in prison by offence - remand and immediate custodial sentence**

	Feb-08		Feb-09		Percentage change 2008 to 2009	
	Remand	Immediate custodial sentence	Remand	Immediate custodial sentence	Remand	Immediate custodial sentence
<b>All young adults<sup>1</sup></b>	<b>1,932</b>	<b>7,487</b>	<b>1,980</b>	<b>7,491</b>	<b>2</b>	<b>0</b>
Violence against the person	525	2,208	534	2,253	2	2
Sexual offences	85	346	81	339	-5	-2
Robbery	380	1,732	369	1,804	-3	4
Burglary	230	925	248	989	8	7
Theft and Handling	122	404	164	338	34	-16
Fraud and Forgery	10	43	31	58	*	*
Drug offences	194	723	182	736	-6	2
Motoring offences	24	167	16	121	*	-28
Other offences	255	886	284	806	11	-9
Offence not recorded	106	53	71	47	-33	*
<b>All male young adults<sup>1</sup></b>	<b>1,837</b>	<b>7,156</b>	<b>1,872</b>	<b>7,185</b>	<b>2</b>	<b>0</b>
Violence against the person	497	2,088	508	2,145	2	3
Sexual offences	83	346	77	339	-7	-2
Robbery	371	1,678	355	1,745	-4	4
Burglary	227	907	242	969	7	7
Theft and Handling	115	375	151	311	32	-17
Fraud and Forgery	10	35	26	52	*	*
Drug offences	178	672	168	694	-5	3
Motoring offences	24	165	16	118	*	-28
Other offences	235	837	262	767	12	-8
Offence not recorded	99	53	67	44	-32	*
<b>All female young adults<sup>1</sup></b>	<b>95</b>	<b>332</b>	<b>107</b>	<b>307</b>	<b>13</b>	<b>-7</b>
Violence against the person	28	121	26	108	*	-10
Sexual offences	2	0	4	0	*	*
Robbery	9	54	14	58	*	8
Burglary	3	18	6	20	*	*
Theft and Handling	8	28	13	27	*	*
Fraud and Forgery	0	7	5	6	*	*
Drug offences	17	52	14	42	*	*
Motoring offences	0	2	0	3	*	*
Other offences	21	49	21	39	*	*
Offence not recorded	7	0	4	4	*	*

<sup>1</sup> Young adults are those aged 18 - 20 and those 21 year olds who were aged 20 or under at conviction who have not been reclassified as part of the adult population

February 2009 and February 2008 data are not directly comparable because some improvements have been made to the way offences are grouped which has resulted in small changes to some offence groups

\* Indicates that one or both of the comparative numbers are less than 50 which could give rise to misleading percentage changes

#### Data Sources and Quality

These figures have been drawn from administrative IT systems which, as with any large scale recording system, are subject to possible errors with data entry and processing. See Data Sources and Quality section of report for more information.

**Table 3: Young population in prison: by type of custody and sex**

28 February 2009

	15	16	17	Total Under 18	18	19	20	21	Total Young Adults <sup>1</sup>
<b>All young population in prisons, of which</b>									
<b><i>Prisoners on remand</i></b>	<b>41</b>	<b>140</b>	<b>323</b>	<b>504</b>	<b>650</b>	<b>580</b>	<b>675</b>	<b>75</b>	<b>1,980</b>
Untried	31	98	220	<b>348</b>	384	354	408	51	<b>1,198</b>
Convicted unsentenced	11	43	103	<b>156</b>	266	226	267	23	<b>782</b>
<b><i>Prisoners under sentence</i></b>	<b>154</b>	<b>473</b>	<b>1,020</b>	<b>1,648</b>	<b>1,491</b>	<b>2,438</b>	<b>2,845</b>	<b>718</b>	<b>7,492</b>
Fine defaulter	0	0	0	<b>0</b>	0	1	0	0	<b>1</b>
Immediate custodial sentence	154	473	1,020	<b>1,648</b>	1,491	2,437	2,845	718	<b>7,491</b>
<b><i>Non-criminal prisoners</i></b>	<b>0</b>	<b>1</b>	<b>2</b>	<b>3</b>	<b>18</b>	<b>30</b>	<b>43</b>	<b>23</b>	<b>114</b>
<b>All young male population in prisons, of which</b>									
<b><i>Prisoners on remand</i></b>	<b>41</b>	<b>140</b>	<b>311</b>	<b>493</b>	<b>618</b>	<b>547</b>	<b>636</b>	<b>72</b>	<b>1,872</b>
Untried	31	98	213	<b>341</b>	362	333	382	49	<b>1,126</b>
Convicted unsentenced	11	43	98	<b>151</b>	256	214	254	22	<b>747</b>
<b><i>Prisoners under sentence</i></b>	<b>154</b>	<b>473</b>	<b>986</b>	<b>1,613</b>	<b>1,417</b>	<b>2,325</b>	<b>2,739</b>	<b>704</b>	<b>7,186</b>
Fine defaulter	0	0	0	<b>0</b>	0	1	0	0	<b>1</b>
Immediate custodial sentence	154	473	986	<b>1,613</b>	1,417	2,324	2,739	704	<b>7,185</b>
<b><i>Non-criminal prisoners</i></b>	<b>0</b>	<b>1</b>	<b>2</b>	<b>3</b>	<b>16</b>	<b>29</b>	<b>41</b>	<b>23</b>	<b>109</b>
<b>All young female population in prisons, of which</b>									
<b><i>Prisoners on remand</i></b>	<b>0</b>	<b>0</b>	<b>12</b>	<b>12</b>	<b>32</b>	<b>33</b>	<b>39</b>	<b>3</b>	<b>107</b>
Untried	0	0	7	<b>7</b>	22	21	26	2	<b>72</b>
Convicted unsentenced	0	0	5	<b>5</b>	10	12	13	1	<b>35</b>
<b><i>Prisoners under sentence</i></b>	<b>0</b>	<b>0</b>	<b>34</b>	<b>34</b>	<b>74</b>	<b>113</b>	<b>106</b>	<b>14</b>	<b>307</b>
Fine defaulter	0	0	0	<b>0</b>	0	0	0	0	<b>0</b>
Immediate custodial sentence	0	0	34	<b>34</b>	74	113	106	14	<b>307</b>
<b><i>Non-criminal prisoners</i></b>	<b>0</b>	<b>0</b>	<b>0</b>	<b>0</b>	<b>2</b>	<b>1</b>	<b>2</b>	<b>0</b>	<b>5</b>

<sup>1</sup> Young adults are those aged 18 - 20 and those 21 year olds who were aged 20 or under at conviction who have not been reclassified as part of the adult population

**Data Sources and Quality**

These figures have been drawn from administrative IT systems, which, as with any large scale recording system, are subject to possible errors with data entry and processing. See Data Sources and Quality section of report for more information.

**Table 4: CNA and population by sex and establishment**

28 February 2009

<b>Establishment</b>	<b>In use CNA<sup>1</sup></b>	<b>Total Population</b>
<b>Males</b>		
Acklington	946	935
Albany	567	556
Altcourse	794	1,285
Ashfield	400	348
Ashwell	599	610
Aylesbury	437	440
Bedford	322	430
Belmarsh	800	891
Birmingham	1,109	1,428
Blantyre House	122	119
Blundeston	481	518
Brinsford	545	556
Bristol	424	605
Brixton	606	748
Buckley Hall	346	374
Bullingdon	879	1,057
Bullwood Hall	180	226
Camp Hill	520	575
Canterbury	195	303
Cardiff	548	799
Castington	400	382
Channings Wood	696	713
Chelmsford	541	671
Coldingley	494	507
Cookham Wood	113	111
Dartmoor	623	644
Deerbolt	469	442
Doncaster	771	1,089
Dorchester	145	220
Dovegate	800	839
Dover	316	295
Durham	593	929
Edmunds Hill	371	357
Elmley	735	941
Erlestoke	470	469
Everthorpe	603	672
Exeter	316	513
Featherstone	663	681
Feltham	762	601
Ford	557	527
Forest Bank	800	1,080
Frankland	733	728
Full Sutton	592	577
Garth	812	809
Gartree	677	673
Glen Parva	668	800
Gloucester	225	281
Grendon/Spring Hill	533	507
Guys Marsh	520	570
Haslar	160	157
Haverigg	622	598
Hewell <sup>2</sup>	1,173	1,381
High Down	999	1,061
Highpoint	874	864
Hindley	515	292
Hollesley Bay	345	326
Holme House	857	917
Hull	694	979
Huntercombe	360	313
Kennet	175	332
Kingston (Portsmouth)	175	174
Kirkham	590	571
Kirklevington Grange	283	276
Lancaster Castle	159	230
Lancaster Farms	437	391
Latchmere House	207	197

**Table 4: CNA and population by sex and establishment**

28 February 2009

<b>Establishment</b>	<b>In use CNA<sup>1</sup></b>	<b>Total Population</b>
Leeds	823	1,146
Leicester	210	368
Lewes	623	672
Leyhill	512	453
Lincoln	436	692
Lindholme	1,046	1,107
Littlehey	663	717
Liverpool	1,166	1,234
Long Lartin	452	439
Lowdham Grange	640	688
Maidstone	451	474
Manchester	948	1,186
Moorland Open	260	241
Moorland Closed	740	767
North Sea Camp	318	301
Northallerton	147	218
Norwich	447	466
Nottingham	379	532
Onley	640	620
Parc	838	1,209
Parkhurst	449	481
Pentonville	813	1,070
Peterborough	480	569
Portland	579	603
Preston	453	714
Ranby	969	1,068
Reading	186	237
Risley	1,050	1,078
Rochester	642	605
Rye Hill	600	646
Shepton Mallet	165	188
Shrewsbury	177	290
Stafford	721	714
Standford Hill	462	432
Stocken	779	796
Stoke Heath	574	535
Sudbury	581	550
Swaleside	808	818
Swansea	230	409
Swinfen Hall	604	617
The Mount	747	749
The Verne	572	584
The Wolds	320	387
Thorn Cross	322	282
Usk/Prescoed	320	408
Wakefield	748	729
Wandsworth	1,086	1,643
Warren Hill	222	205
Wayland	955	1,005
Wealstun	505	515
Wellingborough	638	635
Werrington	160	150
Wetherby	408	358
Whatton	776	838
Whitemoor	464	441
Winchester	499	696
Woodhill	641	832
Wormwood Scrubs	1,176	1,225
Wymott	1,081	1,135
<b>TOTAL</b>	<b>70,144</b>	<b>78,257</b>

**Table 4: CNA and population by sex and establishment**

28 February 2009

<b>Establishment</b>	<b>In use CNA<sup>1</sup></b>	<b>Total Population</b>
<b>Females</b>		
Askham Grange	126	108
Bronzefield	450	453
Downview	359	348
Drake Hall	315	222
East Sutton Park	98	86
Eastwood Park	326	314
Foston Hall	264	235
Holloway	500	470
Low Newton	298	322
Morton Hall	392	319
New Hall	349	361
Peterborough	360	367
Send	278	274
Styal	448	450
<b>TOTAL</b>	<b>4,563</b>	<b>4,329</b>
<b>Male and female establishment total</b>	<b>74,707</b>	<b>82,586</b>
<b>Police cells total</b>	*	<b>0</b>
<b>Establishment and police cell total</b>	<b>74,707</b>	<b>82,586</b>

<sup>1</sup> In Use CNA - Certified Normal Accommodation that is available for immediate use, excludes damaged cells, cells affected by building works and cells taken out of use due to staff shortages

<sup>2</sup> HMP Hewell was created by an amalgamation of the three former prisons, Blakenhurst, Brockhill and Hewell Grange on 25 June 2008

\* On 28th February 2009 up to 400 police cells available under operation safeguard which are not included in the CNA figure

**Data Sources and Quality**

These figures have been drawn from administrative IT systems which, as with any large scale recording system, are subject to possible errors with data entry and processing. See Data Sources and Quality section of report for more information.