



Department  
for Business  
Innovation & Skills



# **Monthly Statistics of Building Materials and Components**

January 2014

No. 467

## NOTES

In tables where figures have been rounded to the nearest final digit, there may be an apparent slight discrepancy between the sum of the constituent items and the total as shown.

Symbols. The following symbols have been used throughout.

- |                       |                   |
|-----------------------|-------------------|
| .. = not available    | (P) = provisional |
| - = nil or negligible | (R) = revised     |

All figures are subject to revisions.

Unless otherwise stated, revisions are due to more complete information from late returns. If any figures are revised by 5% or more from the previously published value, an explanation will be provided.

The United Kingdom Statistics Authority has designated these statistics as National Statistics, in accordance with the Statistics and Registration Service Act 2007 and signifying compliance with the Code of Practice for Official Statistics.

Designation can be broadly interpreted to mean that the statistics:

- meet identified user needs;
- are well explained and readily accessible;
- are produced according to sound methods, and
- are managed impartially and objectively in the public interest.

Unless otherwise stated, the statistics published in this volume have been collected by the Office for National Statistics on behalf of the Department for Business, Innovation & Skills.

Lead Statistician: James Liley

For enquiries or further information about the contents of this publication please contact:

Construction Market Intelligence, 1 Victoria Street,  
London, SW1H 0ET;  
Telephone : 020 - 7215 - 6221  
E-mail : [materialstats@bis.gsi.gov.uk](mailto:materialstats@bis.gsi.gov.uk).

URN 14/313b

5 February 2014

## CONTENTS

	<u>Page</u>
Table 1 : Construction Material Price Indices	1
Table 2 : Price Indices of Construction Materials – monthly	2 & 3
Table 3 : Price Indices of Construction Materials – annual averages	4
Table 4 : Sales of Sand and Gravel in Great Britain	5
Table 5 : Sales of Sand and Gravel by English Regions, Wales and Scotland	6 & 7
Table 6 : Sales of Sand and Gravel by English and Welsh Counties and Scottish Regions	8 & 9
Table 7 : Slate : Production, Deliveries and Stocks	10
Chart 1 : Deliveries of Sand & Gravel and Ready-Mixed Concrete	11
Table 8 : Cement and Clinker : Production, Deliveries and Stocks	12
Chart 2 : Deliveries of Bricks, Concrete Building Blocks and Cement	13
Table 9 : Bricks : Production, Deliveries and Stocks for Great Britain	14 & 15
Table 10 : Bricks : Production, Deliveries and Stocks by English Regions, Wales and Scotland	16 to 19
Table 11 : Concrete Building Blocks : Production, Deliveries and Stocks for Great Britain	20 & 21
Table 12 : Concrete Building Blocks : Production, Deliveries and Stocks by English Regions, Wales and Scotland	22 & 23
Table 13 : Concrete Roofing Tiles and Ready-Mixed Concrete	24
Chart 3 : Comparison of Imports and Exports	25
Table 14 : Value of Overseas Trade in Selected Materials and Components for Constructional Use : Imports (cif) and Exports (fob)	26 to 35



Table 1: Construction Material Price Indices

United Kingdom	2010=100					
	2008	2009	2010	2011	2012	2013
<b>(a) New Housing</b>						
January	90.6	94.0	96.1	102.2	106.0	107.1
February	91.8	94.7	96.5	103.1	106.4	107.6
March	92.3	94.7	96.9	103.7	107.6	107.9
April	92.9	94.4	98.4	104.2	107.9	108.1
May	93.5	94.1	99.9	104.8	107.9	108.5
June	93.2	93.9	100.8	105.7	107.3	108.2
July	94.3	93.6	101.3	106.0	107.3	108.0
August	94.7	94.4	101.7	106.6	107.2	108.2
September	94.6	95.1	102.0	106.5	107.1	108.1
October	95.1	95.6	102.0	106.7	107.2	108.4 (P)
November	94.6	96.3	102.3	106.5	107.3	108.5 (P)
December	94.0	96.1	102.0	106.2	106.8	108.6 (P)
Annual Average	93.5	94.7	100.0	105.2	107.2	108.1 (P)
<b>(b) Other New Work</b>						
January	87.6	94.1	95.4	103.5	110.7	112.1
February	89.0	93.5	95.7	105.0	111.1	112.1
March	89.9	93.1	96.4	106.5	112.2	112.8
April	91.3	92.5	99.1	108.2	112.4	112.0
May	93.1	92.5	101.1	109.2	111.8	111.5
June	94.8	92.5	102.5	109.9	111.6	111.8
July	96.8	92.5	102.0	109.8	110.8	111.7
August	97.8	92.6	101.7	110.0	110.9	111.6
September	98.5	93.3	101.8	109.9	111.5	111.2
October	99.0	94.6	101.5	109.8	111.5	110.8 (P)
November	97.0	96.0	101.3	109.5	111.1	111.8 (P)
December	95.5	95.7	101.3	109.8	111.1	112.5 (P)
Annual Average	94.2	93.6	100.0	108.4	111.4	111.8 (P)
<b>(c) Repair and Maintenance</b>						
January	88.6	93.3	95.6	102.6	107.2	107.8
February	89.5	93.2	96.3	103.7	107.9	108.4
March	90.1	92.9	96.5	104.4	108.8	108.8
April	91.1	92.6	98.1	105.1	109.2	109.0
May	92.0	92.4	100.1	105.8	109.1	109.3
June	92.6	92.2	101.0	106.6	108.5	109.0
July	93.9	92.1	101.5	107.2	108.2	109.0
August	94.5	93.0	101.9	107.9	108.2	109.4
September	94.6	93.8	102.1	107.6	108.2	109.4
October	95.3	94.6	102.1	107.8	108.2	109.4 (P)
November	94.3	95.6	102.5	107.6	108.2	109.4 (P)
December	93.5	95.5	102.2	107.5	107.7	109.5 (P)
Annual Average	92.5	93.4	100.0	106.2	108.3	109.0 (P)
<b>(d) All Work</b>						
January	88.6	94.1	95.7	103.1	109.0	110.0
February	89.8	93.7	96.2	104.4	109.3	110.2
March	90.6	93.4	96.7	105.6	110.4	110.8
April	91.6	93.0	98.7	107.0	110.7	110.2
May	93.0	92.9	100.7	107.7	110.3	110.1
June	94.0	92.7	101.9	108.6	109.9	109.9
July	95.6	92.7	101.7	108.7	109.3	110.1
August	96.6	93.0	101.8	109.0	109.6	110.2
September	97.0	93.8	101.8	108.9	109.8	109.8
October	97.5	94.8	101.6	108.8	109.9	109.7 (P)
November	96.0	96.0	101.7	108.6	109.6	110.1 (P)
December	94.9	95.8	101.4	108.7	109.3	110.5 (P)
Annual Average	93.8	93.8	100.0	107.4	109.8	110.1 (P)

Note: These indices are weighted averages of Producer Price Indices. They do not include electrical or mechanical engineering materials.

Source ONS/BIS

Data have been rebased from 2005=100 to 2010=100 but additionally data from March 2012 to June 2013 have been revised following the correction of weighting errors.

# PRICES

**Table 2: Price Indices of Construction Materials**

United Kingdom

	2012	2013						
	Dec	Jan	Feb	Mar	Apr	May	Jun	
<b>AGGREGATES</b>								
Crushed rock								
- including levy	103.7	102.3	102.1	103.2	103.0	103.2	102.0	
- excluding levy	106.9	106.3	105.0	106.3	106.1	106.3	104.7	
Sand & gravel								
- including levy	114.6	119.0	118.2	113.1	113.2	114.1	111.6	
- excluding levy	116.9	116.8	115.9	112.0	111.9	113.2	113.1	
Coated roadstone	110.3	113.4	110.5	111.0	108.6	108.8	110.2	
<b>CEMENT AND CONCRETE</b>								
Cement **	108.5	109.0	109.0	108.9	109.2	109.0	109.5	
Ready-mixed concrete **	106.5	107.9	107.8	108.1	107.6	107.6	107.7	
Pre-cast concrete products **	103.9	104.2	104.7	104.7	105.5	105.8	106.3	
of which : Blocks, bricks, tiles & flagstones **	105.6	105.4	106.2	106.2	107.5	108.0	107.8	
Concrete reinforcing bars	109.0	109.6	109.1	106.7	106.7	106.5	106.6	
<b>CLAY PRODUCTS</b>								
All Bricks **	105.5	107.0	106.3	106.6	106.6	106.8	106.4	
Ceramic tiles	..	..	..	..	..	..	..	
Ceramic sanitaryware	..	..	..	..	..	..	..	
<b>TIMBER AND JOINERY</b>								
Imported sawn or planed wood	97.3	97.7	97.9	99.2	102.9	103.8	103.6	
Imported plywood	108.6	109.0	110.9	114.7	114.1	115.8	113.0	
Sawn wood **	105.5	105.3	106.2	106.6	106.4	106.7	106.5	
Particle Board **	124.1	124.9	125.0	125.6	125.3	123.5	125.5	
Builders woodwork **	107.7	107.8	107.8	107.7	108.0	107.4	107.4	
of which : Doors & windows **	111.4	111.1	111.1	110.9	111.5	109.5	109.5	
<b>METAL PRODUCTS</b>								
Fabricated structural steel	105.8	106.0	105.1	106.3	107.0	105.8	105.0	
Doors & windows **	110.2	110.2	110.6	110.5	110.6	110.5	110.5	
Central heating boilers **	104.5	104.5	104.5	106.8	107.0	107.0	..	
Taps and Valves for sanitaryware *	..	..	..	..	..	..	112.2	
<b>PLASTIC PRODUCTS</b>								
Pipes and fittings (rigid) **	109.8	109.4	109.5	110.4	110.4	110.2	110.8	
Pipes and fittings (flexible) **	106.1	106.3	106.8	108.0	107.8	107.8	107.1	
Sanitaryware *	103.4	103.4	104.6	104.9	104.9	104.9	104.9	
Doors & windows **	106.4	106.3	106.2	106.3	106.4	106.5	106.5	
<b>OTHER BUILDING MATERIALS</b>								
Asphalt products	..	..	..	..	..	..	..	
Insulating materials (thermal or acoustic) **	114.5	115.2	116.3	116.9	116.6	116.7	116.8	
Paint (aqueous) **	109.6	110.8	114.1	114.4	113.5	113.0	113.5	
Paint (non-aqueous) **	115.1	116.5	118.0	118.0	117.1	117.3	117.1	
Lighting equipment for buildings	..	..	..	..	..	..	..	
Lighting equipment for roads **	103.3	103.3	103.3	103.3	103.3	103.3	103.3	
Electric water heaters *	108.0	107.9	107.9	108.1	108.6	110.0	109.5	
Kitchen furniture **	106.1	106.1	106.2	106.2	106.3	107.0	107.0	

Notes : 1. Most of these indices, which are compiled by the Office for National Statistics, are a selection of producer price indices.

The complete list is available online at [www.statistics.gov.uk](http://www.statistics.gov.uk), by searching for the reference MM22.

\*The Office for National Statistics state that these Indices are based on relatively few quotes and in the long term should not be relied upon for contractual purposes.

\*\* These index values are considered less reliable mainly due to lack of market coverage.

2010=100

Jul	Aug	Sep	Oct	Nov (P)	Dec (P)	
						<b>AGGREGATES</b>
102.5	101.0	101.2	101.3	101.1	101.1	Crushed rock - including levy
106.4	105.0	104.7	104.7	104.4	104.4	- excluding levy
116.5	114.8	114.4	117.1	116.9	116.9	Sand & gravel - including levy
119.0	117.0	116.5	119.7	119.8	119.8	- excluding levy
110.7	112.1	112.6	112.4	113.0	113.1	Coated roadstone - excluding levy
						<b>CEMENT AND CONCRETE</b>
109.4	109.2	109.0	109.1	109.0	109.0	Cement **
108.8	108.8	109.2	109.8	110.6	110.6	Ready-mixed concrete **
105.9	105.9	106.1	106.1	106.4	106.6	Pre-cast concrete products **
107.4	107.3	107.7	107.7	108.0	108.4	of which : Blocks, bricks, tiles & flagstones **
107.9	106.5	107.5	105.4 (P)	104.7	106.5	Concrete reinforcing bars
						<b>CLAY PRODUCTS</b>
105.1	106.0	107.3	108.5	109.9	108.1	All Bricks **
..	..	..	..	..	..	Ceramic tiles
..	..	..	..	..	..	Ceramic sanitaryware
						<b>TIMBER AND JOINERY</b>
103.6	103.5	103.1	103.6	103.3	103.3	Imported sawn or planed wood
110.9	109.9	107.2	107.2	105.9	105.6	Imported plywood
107.4	109.0	108.1	109.2	109.6	109.0	Sawn wood **
125.5	126.1	128.0	129.6	130.3	130.0	Particle Board **
107.5	107.8	107.8 (R)	108.1	108.2	108.2	Builders woodwork **
109.6	109.4	109.9	109.9	110.1	109.3	of which : Doors & windows **
						<b>METAL PRODUCTS</b>
103.7	101.5	101.7	100.6 (P)	101.0	101.9	Fabricated structural steel
110.5	110.5	110.4	110.4	110.4	110.4	Doors & windows **
..	..	..	..	..	..	Central heating boilers **
112.1	112.8	113.6	114.0	114.1	114.1	Taps and Valves for sanitaryware *
						<b>PLASTIC PRODUCTS</b>
113.1	116.4	111.8	111.6	114.2	114.2	Pipes and fittings (rigid) **
107.0	107.8	108.0	..	..	..	Pipes and fittings (flexible) **
104.9	105.3	105.3	105.3	105.3	104.8	Sanitaryware *
106.9	107.4	107.5	107.5	107.2	106.9	Doors & windows **
						<b>OTHER BUILDING MATERIALS</b>
..	..	..	..	..	..	Asphalt products
117.7	117.4	116.9	116.8	116.6	116.3	Insulating materials (thermal or acoustic) **
113.5	113.3	113.3	113.3	113.3	113.7	Paint (aqueous) **
116.8	116.7	116.7	116.7	116.7	116.8	Paint (non-aqueous) **
..	..	..	..	..	..	Lighting equipment for buildings
103.5	103.7	103.7	103.7	103.7	103.7	Lighting equipment for roads **
109.5	109.3	109.4	109.2	108.7	108.5	Electric water heaters *
107.3	107.1	107.2	107.2	107.2	107.5	Kitchen furniture **

Source : ONS

Note: Data have been rebased from 2005=100 to 2010=100. All indices in this table are composed using SIC07 codes. Previous indices based on older SIC codes are available from earlier editions of these tables.

Office for National Statistics (ONS) advise on how these indices can be indexed to 2005 (ie 2005=100 basis):

<http://www.ons.gov.uk/ons/guide-method/user-guidance/prices/ppi/producer-price-index--ppi--rebasinq-2010---question-and-answer-document.pdf>

# PRICES

## Table 3: Price Indices of Construction Materials - Annual Averages

United Kingdom		2010=100				
		2009	2010	2011	2012	2013
		(P)				
<b>AGGREGATES</b>						
Crushed rock	- including levy	96.1	100.0	105.1	105.3	102.0
	- excluding levy	94.4	100.0	108.4	108.3	105.4
Sand & gravel	- including levy	95.9	100.0	101.7	109.6	115.5
	- excluding levy	95.4	100.0	102.0	111.2	116.2
Coated roadstone	- excluding levy	..	100.0	103.3	111.3	111.4
<b>CEMENT AND CONCRETE</b>						
Cement		104.0	100.0	101.6	108.1	109.1
Ready-mixed concrete		100.8	100.0	103.0	106.9	108.7
Plasterboard etc		..	..	..	..	..
Pre-cast concrete products		101.5	100.0	102.7	104.0	105.7
	of which: Blocks, bricks, tiles & flagstones	100.2	100.0	103.3	105.6	107.3
Concrete re-inforcing bars		87.1	100.0	116.6	113.2	107.0
Fibre Cement Products		..	..	..	..	..
<b>CLAY PRODUCTS</b>						
All Bricks		98.9	100.0	100.2	104.7	107.1
Ceramic tiles		97.6	100.0	100.8	..	..
Ceramic sanitaryware		97.2	100.0	108.9	..	..
<b>TIMBER AND JOINERY</b>						
Imported sawn or planed wood		84.3	100.0	101.1	99.2	102.1
Imported plywood		83.5	100.0	104.2	110.1	110.4
Sawn Wood		90.1	100.0	104.7	105.7	107.5
Particle Board		95.3	100.0	113.5	120.2	126.6
Builders woodwork		96.3	100.0	103.4	107.4	107.8
	of which					
	Doors & windows	98.5	100.0	104.8	111.3	110.2
<b>METAL PRODUCTS</b>						
Fabricated structural steel		89.9	100.0	112.3	109.1	103.8
Doors & windows		98.8	100.0	104.1	110.8	110.5
Screws etc		..	..	..	..	102.2
Other builders' ironmongery		..	..	..	105.2	107.0
Central heating boilers		96.8	100.0	103.6	104.7	..
Central heating pumps		..	..	..	..	..
Taps & valves (domestic)		96.4	100.0	106.8	..	..
Metal sanitaryware		..	..	..	111.2	110.7
Copper pipes		..	..	..	..	..
<b>PLASTIC PRODUCTS</b>						
Pipes and fittings (rigid)		100.2	100.0	104.2	108.1	111.8
Pipes and fittings (flexible)		99.8	100.0	102.8	105.2	..
Sanitaryware		99.1	100.0	101.2	103.0	104.9
Doors & windows		100.0	100.0	102.5	104.3	106.8
Floor covering		..	..	..	..	..
<b>OTHER BUILDING MATERIALS</b>						
Asphalt products		93.5	100.0	..	..	..
Insulating materials (thermal or acoustic)		102.4	100.0	106.6	114.0	116.7
Paint (aqueous)		97.8	..	..	110.5	113.3
Paint (non-aqueous)		99.2	100.0	107.0	114.5	117.0
Lighting equipment for buildings		100.8	100.0	..	..	..
Lighting equipment for roads		102.4	100.0	100.0	103.1	103.5
Electric heating apparatus		..	..	..	..	..
Electric water heaters		97.2	100.0	104.0	107.4	108.9
Kitchen furniture		98.3	100.0	102.8	106.8	106.9

Source : ONS

Note 1: These indices, which are compiled by the Office for National Statistics, are a selection of producer price indices. The complete list is published monthly by the ONS in the Business Monitor MM22.

Note 2: Data have been rebased from 2005=100 to 2010=100. All indices in this table are composed using SIC07 codes. Previous indices based on older SIC codes are available from earlier editions of these tables.



## MINING AND QUARRYING

**Table 4 : Sales of Sand and Gravel in Great Britain**

Great Britain		Thousand tonnes					
	Sand		Gravel	Sand & Gravel	Sand, Gravel & Hoggin	Sand & Gravel	of which
	for Building	for Concreting	for Concreting & other uses	for Coating	for Fill	Total	Marine-Dredged
2002	11,152	30,334	35,642	2,106	6,279	85,513	12,833
2003	11,474	31,349	31,725	1,493	6,498	82,539	12,249
2004	11,017	32,366	30,184	1,380	6,399	81,346	12,996
2005	12,419	30,704	30,648	1,569	5,173	80,513	13,025
2006	9,499	29,893	31,963	2,346	4,195	77,896	13,974
2007	8,649	29,803	31,114	1,695	4,254	75,515	13,777
2008	8,864	28,922	28,297	..	..	74,651	12,582
2009	7,270	21,582	..	..	..	58,482	9,589
2010	6,074	19,887	..	..	..	54,530	9,341
2011	6,041	23,489	..	..	..	57,062	11,169
2012	6,499	21,994	23,077	..	..	57,972	10,320
2007 Q3	2,304	7,829	8,191	398	1,162	19,884	3,675
Q4	1,959	7,293	7,479	422	1,009	18,162	3,329
2008 Q1	2,151	7,156	7,286	379	1,180	18,152	3,035
Q2	2,385	7,724	7,668	456	2,041	20,274	3,541
Q3	2,279	7,644	7,091	..	..	19,341	3,337
Q4	2,049	6,398	6,252	490	1,695	16,884	2,669
2009 Q1	1,727	5,313	5,330	695	1,566	14,631	2,389
Q2	1,916	5,637	5,756	..	..	15,359	2,637
Q3	1,992	5,598	..	..	..	14,878	2,457
Q4	1,635	5,034	..	..	1,432	13,614	2,106
2010 Q1	1,539	4,952	..	..	..	13,711	2,131
Q2	1,585	4,983	..	..	..	13,940	2,444
Q3	1,584	5,268	..	..	..	14,112	2,592
Q4	1,366	4,684	..	..	..	12,767	2,174
2011 Q1	1,572	5,665	..	..	..	14,150	2,746
Q2	1,579	6,127	5,291	..	..	14,831	2,923
Q3	1,533	6,085	5,160	..	..	14,684	2,937
Q4	1,357	5,612	4,719	..	..	13,397	2,563
2012 Q1	1,481	5,635	5,039	..	..	13,894	2,675
Q2	1,712	5,608	5,633	..	..	14,474	2,609
Q3	1,778	5,612	6,259	..	..	15,192	2,749
Q4	1,528	5,139	6,146	..	..	14,412	2,287
2013 Q1	1,380	4,854	5,107	..	..	12,957	2,260
Q2	1,570	4,665	4,908	..	..	13,662	2,681
Q3	1,545	5,007	4,760	322	2,264	13,898	2,914

Note : The figures above are from a quarterly sample inquiry whereas those below are from the Annual Minerals Raised Inquiry, a census.

The two inquiries differ because some respondents are only able to provide estimated information for the quarterly inquiry.

1999	11,356	31,730	31,614	2,585	10,924	88,209	13,424
2000	11,758	31,167	31,797	2,461	12,051	89,234	14,356
2001	11,515	31,656	35,135	2,257	7,647	88,210	13,611
2002	11,190	31,224	32,434	2,031	5,842	82,721	12,832
2003	11,851	31,411	30,236	1,766	4,957	80,221	12,131
2004	10,688	32,529	32,346	2,437	8,058	86,057	12,996
2005	11,558	29,848	32,163	2,172	6,651	82,392	13,024
2006	9,907	29,815	31,002	2,648	6,869	80,242	13,974
2007	9,877	30,202	29,350	2,636	6,436	78,501	13,777
2008	8,527	26,885	23,388	2,222	11,106	72,127	12,621
2009	6,296	21,570	19,553	2,270	6,021	55,709	9,592
2010	6,110	20,947	18,540	2,112	6,621	54,330	9,341
2011	6,140	22,591	18,712	1,913	5,659	55,015	11,189

# MINING AND QUARRYING

**Table 5 : Sales of Sand and Gravel by Standard region, Wales and Scotland**

	<b>Sand</b> for Building	<b>Sand</b> for Concreting	<b>Gravel</b> for Concreting & other uses	<b>Sand &amp; Gravel</b> for Coating	<b>Sand, Gravel &amp; Hoggin</b> for Fill	<b>Sand &amp; Gravel</b> Total	of which <b>Marine- Dredged</b>
<b>(a) Q3 2013</b>							
North East	..	96	33	3	10	..	..
Yorkshire & the Humber	168	313	246	..	253	..	..
North West	161	174	12	17	95	459	35
West Midlands	141	778	836	..	..	2,224	0
East Midlands	..	417	443	..	222	1,231	0
East of England	254	817	687	..	428	..	..
South East	352	1,082	1,695	51	376	3,556	2,401
South West	178	671	225	..	329	..	..
Wales	95	195	85	1	27	403	177
Scotland	85	462	498	108	75	1,228	0
Great Britain	1,545	5,007	4,760	322	2,264	13,898	2,914
of which marine-dredged	167	1,180	1,463	11	93	2,914	
<b>(b) Q3 2012</b>							
North East	26	..	1,118	..	37	..	..
Yorkshire & the Humber	128	329	305	..	54	..	..
North West	171	214	..	19	..	466	24
West Midlands	195	707	630	..	..	1,632	0
East Midlands	125	633	490	..	..	1,374	0
East of England	261	985	1,006	..	153	..	..
South East	347	1,107	1,842	34	230	3,560	2,158
South West	188	710	242	..	..	1,358	182
Wales	103	..	..	6	23	354	170
Scotland	234	574	545	119	255	1,727	0
Great Britain	1,778	5,612	6,259	..	..	15,192	2,749
of which marine-dredged	167	1,116	1,437	..	..	2,749	

Note : Regions refer to Government Office Regions

# MINING AND QUARRYING

Thousand tonnes

	<b>Sand</b>		<b>Gravel</b>	<b>Sand &amp; Gravel</b>	<b>Sand, Gravel &amp; Hoggin</b>	<b>Sand &amp; Gravel</b>	of which
	for Building	for Concreting	for Concreting & other uses	for Coating	for Fill	Total	<b>Marine-Dredged</b>
<b>(c) Annual 2012</b>							
North East	112	..	3,657	..	..	..	..
Yorkshire & the Humber	492	1,267	1,163	..	213	..	..
North West	705	877	..	..	..	..	..
West Midlands	741	2,629	2,451	..	..	6,233	0
East Midlands	475	2,528	..	..	..	5,344	0
East of England	945	3,898	3,773	..	579	..	..
South East	1,206	4,746	..	166	..	13,575	8,208
South West	682	2,618	..	..	..	5,088	534
Wales	397	..	..	..	..	1,446	614
Scotland	744	2,089	2,607	519	1,022	6,981	0
Great Britain	6,499	21,994	23,077	..	..	57,972	10,320
of which marine-dredged	591	4,608	4,892	..	..	10,320	
<b>(d) Annual 2011</b>							
North East	100	..	..	..	270	..	..
Yorkshire & the Humber	519	1,374	1,277	..	393	..	..
North West	754	..	..	123	..	1,940	96
West Midlands	505	2,458	2,358	..	..	5,695	0
East Midlands	443	2,594	1,962	..	..	5,673	0
East of England	950	4,184	3,586	..	786	..	..
South East	1,050	5,839	6,509	182	..	14,585	8,836
South West	555	2,779	..	..	..	5,795	502
Wales	428	..	..	..	..	1,671	740
Scotland	737	2,103	2,467	451	859	6,617	0
Great Britain	6,041	23,489	..	..	..	57,062	11,169
of which marine-dredged	514	5,418	..	..	..	11,169	

Note : Regions refer to Government Office Regions

# MINING AND QUARRYING

## Table 6 : Sales of Sand and Gravel by English & Welsh County and Scottish Region

Thousand tonnes

	2012			2013		
	Quarter 2	Quarter 3	Quarter 4	Quarter 1	Quarter 2	Quarter 3
<b>NORTH EAST</b>	..	..	..	..	..	..
Northumberland	1,014	1,231	1,231	912	769	62
Tyne and Wear *	17	21	18	11	14	7
Durham	..	53	52	51	41	10
Cleveland *	..	..	..	..	..	..
<b>YORKSHIRE &amp; THE HUMBER</b>	..	..	..	..	..	..
North Yorkshire	423	437	389	355	397	443
West Yorkshire	..	..	..	..	..	..
South Yorkshire	178	178	..	158	..	..
Humberside *	164	172	154	141	221	261
<b>NORTH WEST</b>	480	466	464	377	359	459
Cumbria	141	137	137	102	72	103
Lancashire	30	29	29	28	..	..
Merseyside *	20	24	27	23	29	35
Greater Manchester	39	38	38	6	..	7
Cheshire	250	238	233	218	232	286
<b>WEST MIDLANDS</b>	1,564	1,632	1,596	1,479	1,930	2,224
Shropshire	188	196	193	175	198	232
Staffordshire	975	1,016	998	1,053	1,419	1,655
West Midlands	124	132	123	110	153	..
Warwickshire	107	108	108	..	..	136
Hereford & Worcester	170	180	174	..	..	..
<b>EAST MIDLANDS</b>	1,366	1,374	1,303	1,257	1,292	1,231
Derbyshire	249	251	241	251	254	241
Nottinghamshire	348	345	328	357	365	345
Leicestershire	..	..	..	..	..	..
Northamptonshire	..	..	..	..	..	52
Lincolnshire	470	500	467	437	469	454
<b>EAST OF ENGLAND</b>	..	..	..	..	..	..
Cambridgeshire	393	397	353	342	336	348
Norfolk	335	341	294	226	281	281
Suffolk *	..	357	284	249	290	..
Essex *	..	..	..	..	..	..
Bedfordshire	291	292	254	282	359	379
Hertfordshire	..	..	..	239	..	..
<b>SOUTH EAST</b>	3,399	3,560	3,067	3,027	3,230	3,556
Buckinghamshire	..	..	77	108	..	84
Oxfordshire	88	101	98	123	136	149
Berkshire	193	205	186	168	126	131
Greater London *	970	1,038	910	1,017	1,119	1,277
Surrey	228	239	216	154	142	160
Kent *	956	964	744	681	766	801
Sussex East *	..	..	..	..	..	..
Sussex West *	194	202	183	169	255	280
Hampshire *	564	613	559	496	465	557
Isle of Wight	..	..	..	..	..	..

Note : Regions refer to Government Office Regions

\* Includes marine-dredged.

# MINING AND QUARRYING

Thousand tonnes

	2012			2013		
	Quarter 2	Quarter 3	Quarter 4	Quarter 1	Quarter 2	Quarter 3
<b>SOUTH WEST</b>	1,268	1,358	1,188	..	..	..
Gloucestershire	180	186	165	171	157	160
Wiltshire	166	173	160	221	201	203
Avon *	..	..	..	..	..	..
Somerset *	..	..	..	..	..	..
Dorset *	..	..	..	..	..	..
Devon *	171	178	160	173	164	168
Cornwall	..	..	..	305	304	311
<b>ENGLAND</b>	12,530	13,111	11,955	11,304	12,139	12,267
<b>WALES</b>	347	354	385	384	354	403
Clwyd	120	116	149	145	116	139
Gwynedd *	..	35	36	39	36	..
Powys	1	1	2	2	1	1
Dyfed *	..	..	..	..	..	..
Glamorgan West *	25	23	21	14	22	22
Glamorgan Mid	0	0	0	0	0	0
Glamorgan South *	..	..	..	..	..	..
Gwent *	..	..	..	..	..	..
<b>SCOTLAND</b>	1,597	1,727	2,072	1,269	1,169	1,228
South of Scotland	100	109	161	93	92	..
North East Scotland	197	208	298	144	129	135
Highlands	145	151	209	165	126	129
Island Areas	10	13	11	13	11	10
East Central Scotland	290	307	258	112	92	102
West Central Scotland	500	552	546	406	392	410
Tayside and Fife	355	387	589	336	327	349
<b>GREAT BRITAIN</b>	14,474	15,192	14,412	12,957	13,662	13,898

Note : Regions refer to Government Office Regions

\* Includes marine-dredged.

# MINING AND QUARRYING

## Table 7 : Slate - Production, Deliveries and Stocks

Great Britain

Tonnes

	Production			Deliveries			Stocks (a)			Deliveries
	Roofing (b)	Other (c)	Powder & Granules	Roofing (b)	Other (c)	Powder & Granules	Roofing (b)	Other (c)	Powder & Granules	Fill & Other Uses
2001	30,770	14,834	47,521	33,052	13,586	47,588	3,159	8,465	2,799	383,353
2002	32,182	18,348	44,424	32,653	19,069	43,947	2,674	7,850	3,275	498,212
2003	34,471	15,623	29,003	34,700	14,576	29,240	2,477	8,849	3,416	669,818
2004	..	..	..	..	..	..	..	..	..	..
2005	..	..	..	..	..	..	2,824	10,281	5,347	..
2006	..	61,612	22,967	..	64,037	22,719	..	6,454	4,274	860,395
2007	..	65,260	19,141	..	62,646	19,431	2,563	2,521	3,746	..
2008	..	59,644	16,915	..	58,129	18,402	..	2,749	2,253	..
2009	..	33,759	9,150	22,555	34,322	10,637	2,420	2,186	766	615,346
2010	..	28,001	..	..	27,355	..	..	3,063	..	582,111
2011	..	30,665	..	..	30,437	..	..	3,245	..	662,003
2012	..	29,634	..	..	28,083	..	..	3,262	..	607,127
2005 Q3	..	..	..	..	..	..	..	..	..	..
Q4	..	13,635	7,448	..	6,194	7,635	2,824	10,281	5,347	124,188
2006 Q1	..	11,594	6,575	..	12,879	6,406	3,170	8,967	5,440	195,762
Q2	..	14,804	5,051	..	14,983	5,257	3,079	7,424	3,990	223,696
Q3	..	16,170	5,194	..	16,803	5,094	..	6,792	4,090	251,314
Q4	..	19,044	6,147	..	19,372	5,962	..	6,454	4,274	189,623
2007 Q1	..	17,787	5,571	..	16,829	5,036	6,984	4,996	4,571	376,876
Q2	..	16,577	4,315	..	14,765	4,875	3,066	5,850	4,011	346,426
Q3	..	16,017	4,672	..	15,475	4,929	2,977	6,391	3,754	..
Q4	..	14,879	4,583	..	15,577	4,591	2,563	2,521	3,746	255,249
2008 Q1	..	18,608	4,282	..	18,071	4,414	..	3,059	3,594	246,495
Q2	..	15,465	4,738	..	14,457	4,862	..	3,801	3,484	..
Q3	..	13,811	3,843	..	13,841	5,511	3,851	2,749	1,816	..
Q4	..	11,760	4,052	..	11,760	3,615	..	2,749	2,253	..
2009 Q1	..	7,370	2,128	5,315	7,688	2,724	..	2,431	1,658	148,722
Q2	5,084	9,124	2,046	5,328	9,319	3,385	4,142	2,236	318	169,661
Q3	5,503	8,263	2,046	6,534	8,267	2,163	3,111	2,232	201	154,862
Q4	4,687	9,002	2,930	5,378	9,048	2,365	2,420	2,186	766	142,101
2010 Q1	..	6,772	..	..	6,662	..	..	2,296	..	88,805
Q2	..	7,517	..	..	7,388	..	2,049	3,284	683	175,098
Q3	..	7,335	..	..	7,184	..	1,326	3,332	281	159,574
Q4	4,907	6,377	..	4,909	6,121	..	..	3,063	..	158,634
2011 Q1	4,736	6,516	3,314	4,449	6,504	3,399	..	3,029	..	198,547
Q2	4,677	8,167	3,370	4,630	8,187	3,094	2,012	3,009	472	216,524
Q3	..	9,851	..	..	9,732	..	..	3,128	..	139,359
Q4	..	6,131	..	..	6,014	..	..	3,245	..	107,573
2012 Q1	..	9,247	..	..	8,829	..	..	2,646	..	131,311
Q2	..	8,216	..	..	9,677	..	..	1,154	..	177,748
Q3	..	6,219	..	..	6,167	..	..	1,206	..	146,152
Q4	..	5,952	..	..	3,410	..	..	3,262	..	151,916
2013 Q1	..	6,052	..	..	9,220	..	..	..	802	157,215
Q2	..	8,105	..	..	7,969	..	..	..	736	180,268
Q3	..	10,261	..	..	10,749	..	..	..	537	169,995

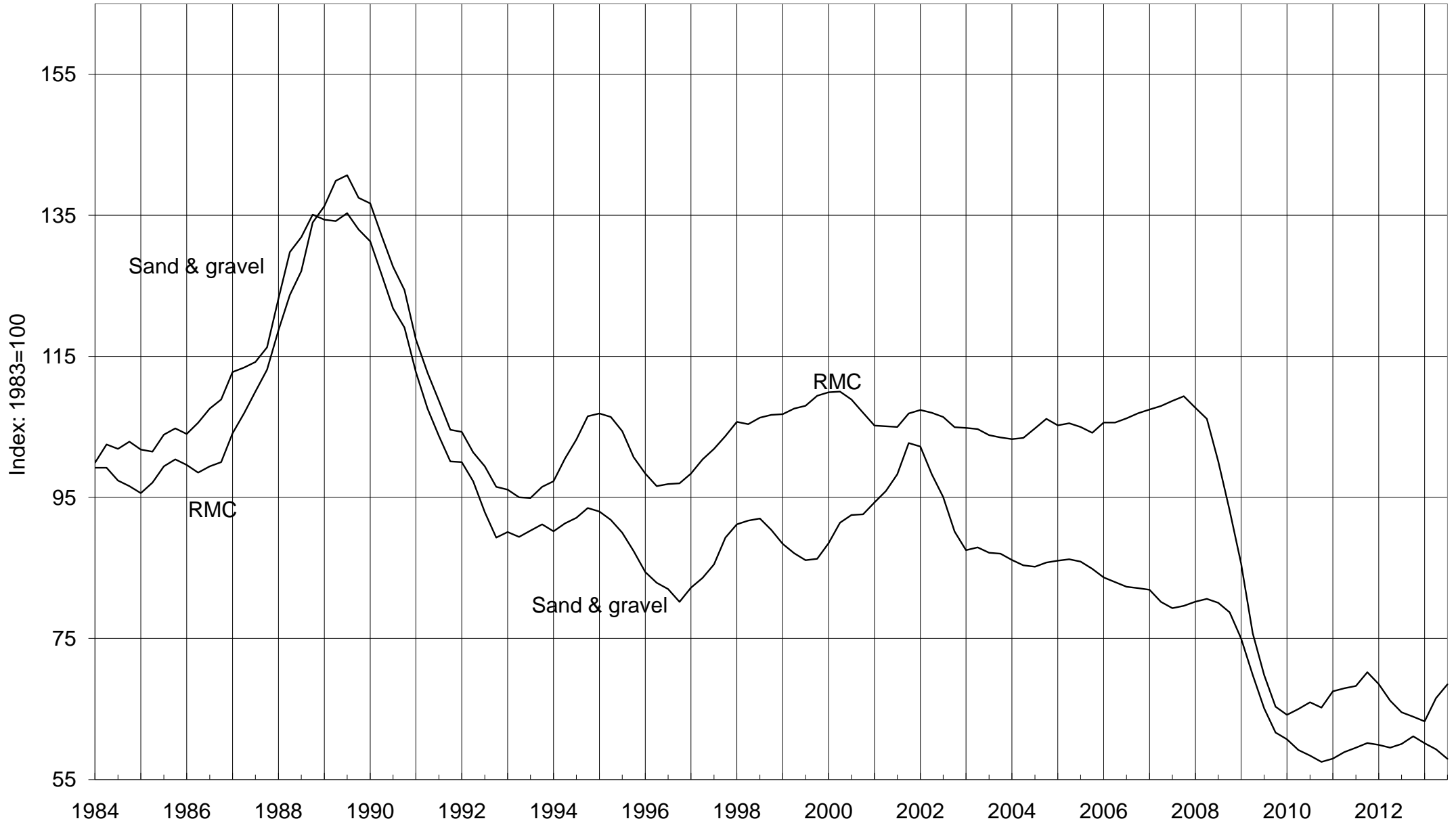
Note : 1) We have improved our sampling panel to include some new sites and have removed some non-pure slate sites. In line with the Code of Practice we have revised the data for Q2, Q3 and Q4 2010.

2) From Q1 1995, the coverage of 'powder & granules' has been extended to include non-quarry manufacture; and 'crude blocks' are included in 'other' manufacture slate.

- (a) Refers to stocks at the end of the period.
- (b) Consists of all slate tiles which could be used as roofing tiles.
- (c) Consists of all slate products for cladding and decorative uses

# Deliveries of Sand & Gravel and RMC

4-quarter moving average



The data is taken from Tables 4 & 13

Table 8 : Cement &amp; Clinker - Production and Deliveries

Great Britain		Thousand tonnes							
Cement								Clinker	
Production		Deliveries		Imports (into GB)		Cementitious Material		Production	
of which Exports (from GB)		(into GB from GB production)		by 'Manuf.	by Others**	other	total		
2007		11,887	74	11,638	255	1,121	2,769	15,783	10,227
2008		10,071	61	9,937	283	1,084	2,432	13,660	8,700
2009		7,623	21	7,474	99	1,085	1,680	10,338	6,421
2010		7,883	0	7,767	61	1,153	1,535	10,515	6,598
2011		8,529	0	8,318	86	1,173	1,736	11,312	7,096
2012		7,952	0	7,728	61	1,122	1,605	10,515	6,555
2007	Q4	2,891	16	2,787	69	259	681	3,796	2,643
2008	Q1	2,609	18	2,551	88	268	598	3,505	2,267
	Q2	2,803	18	2,816	94	327	682	3,917	2,366
	Q3	2,520	13	2,496	72	263	648	3,445	2,202
	Q4	2,139	12	2,074	29	226	505	2,793	1,865
2009	Q1	1,762	14	1,782	37	256	410	2,485	1,378
	Q2	2,004	1	1,970	21	279	451	2,721	1,587
	Q3	1,998	5	1,999	25	283	453	2,760	1,831
	Q4	1,859	1	1,723	17	268	366	2,373	1,624
2010	Q1	1,726	0	1,744	24	246	336	2,350	1,261
	Q2	2,157	0	2,154	8	345	416	2,923	1,745
	Q3	2,203	0	2,195	17	310	450	2,971	1,880
	Q4	1,796	0	1,674	12	252	332	2,270	1,713
2011	Q1	1,979	0	2,043	12	281	402	2,738	1,427
	Q2	2,245	0	2,165	25	319	448	2,956	1,791
	Q3	2,246	0	2,200	25	303	494	3,022	2,015
	Q4	2,059	0	1,909	24	270	392	2,595	1,863
2012	Q1	1,880	0	1,928	16	285	370	2,599	1,366
	Q2	2,073	0	1,974	13	277	389	2,653	1,736
	Q3	2,120	0	2,021	13	302	444	2,780	1,722
	Q4	1,879	0	1,805	20	257	400	2,483	1,731
2013	Q1	1,425	0	1,724	16	259	393	2,393	1,198
	Q2	2,212	0	2,171	17	310	518	3,016	1,821
	Q3	2,324	0	2,251	38	..	..	..	1,884
2012	Sep	701	0	642	4	..	..	..	545
	Oct	692	0	733	4	..	..	..	566
	Nov	674	0	668	8	..	..	..	536
	Dec	513	0	404	8	..	..	..	629
2013	Jan	423	0	467	4	..	..	..	290
	Feb	617	0	620	8	..	..	..	427
	Mar	676	0	622	4	..	..	..	479
	Apr	693	0	714	4	..	..	..	622
	May	759	0	735	9	..	..	..	631
	Jun	760	0	723	4	..	..	..	568
	Jul	795	0	800	10	..	..	..	598
	Aug	779	0	714	17	..	..	..	672
	Sep	749	0	738	11	..	..	..	613

Monthly data no longer available<sup>1</sup>

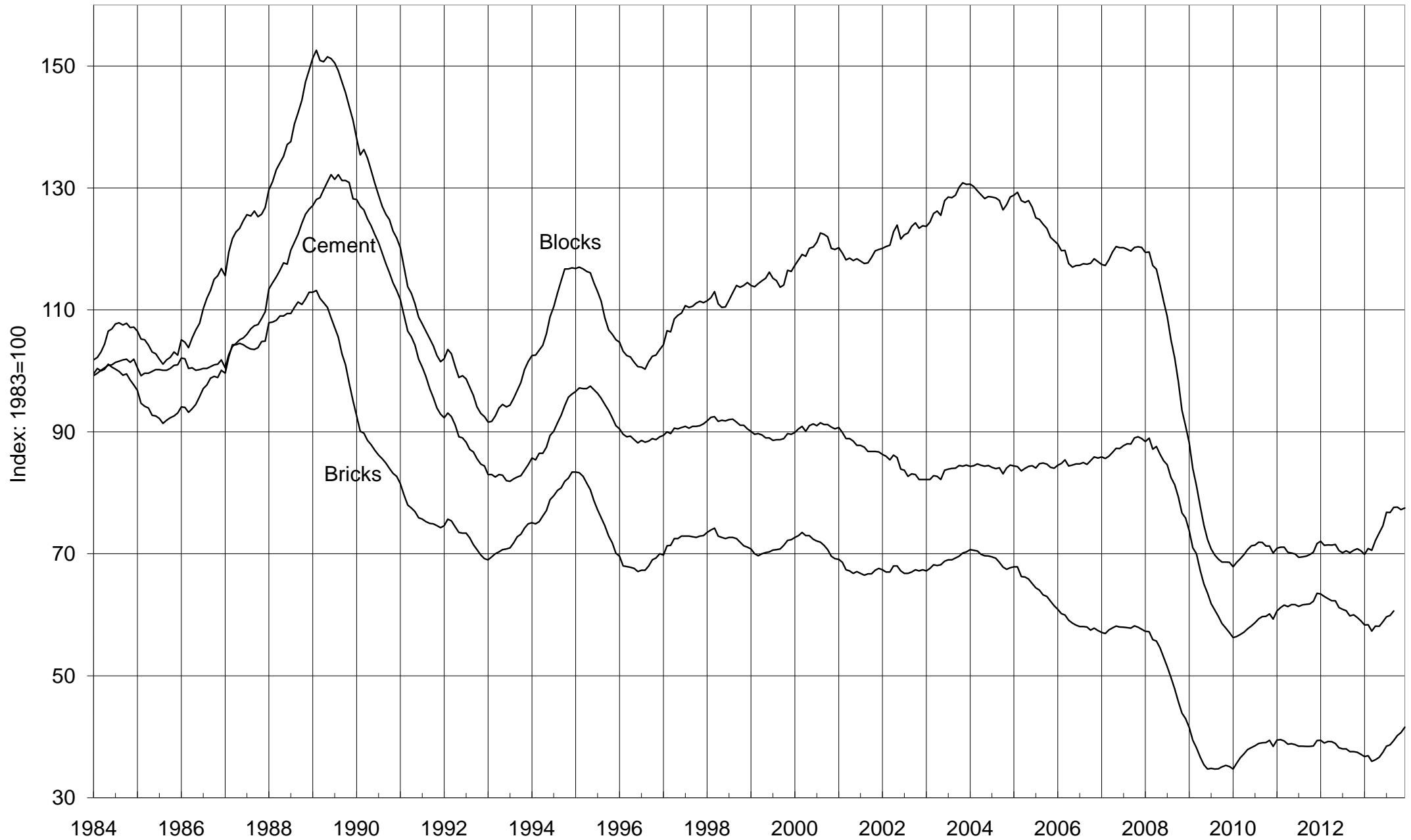
1. Arrangements for publication of the cementitious data have been revised following discussion and agreement by the Mineral Products Association (MPA) Cement members. Data will be available on an annual basis and data for 2013 due on 5 March 2014.

**NB** Where the coverage is for Great Britain, the figures for imports & exports are defined accordingly and have been estimated. Cementitious material covers cement itself, fly ash to EN 450 Part 1 where used as part of the cement in concrete (previously known as pulverised fuel ash (pfa) to BS 3892 Part 1) and ground granulated blast furnace slag (ggbs) to



# Deliveries of Bricks, Blocks & Cement

12-month moving totals



The data is taken from tables 8, 9 and 11. See footnotes on table 11 concerning data from December 2011 to June 2012.

## BRICKS

Table 9 : Bricks - Production, Deliveries and Stocks

Great Britain

		Production	Deliveries (from)	Stocks*	Production	Deliveries (from)	Stocks*
<b>(a) Brick Type</b>		<u>All Types</u>			<u>Commons</u>		
2009		1,257	1,469	887	185	224	108
2010		1,430	1,606	702	182	194	94
2011		1,554	1,646	610	172	185	82
2012		1,459	1,551	515	137	166	52
2013		1,560	1,738	339	153	170	35
2012	Q4	311	345	515	33	35	52
2013	Q1	344	343	518	33	36	50
	Q2	390	460	447	35	45	41
	Q3	415	499	363	44	47	38
	Q4 (P)	411	436	339	41	43	35
2012	December	64	72	515	8	8	52
2013	January	101	96	520	10	11	51
	February	114	116	519	11	12	51
	March	130	131	518	12	13	50
	April	127	142	503	13	14	49
	May	129	159	473	10	16	44
	June	133	158	447	12	15	41
	July	133	182	399	16	18	39
	August	134	156	377	13	14	38
	September	148	162	363	15	15	38
	October	153	175	341	15	17	36
	November	149	152	338	13	14	35
	December (P)	109	109	339	12	11	35
<b>(b) Material Type</b>		<u>All Materials</u>			<u>Clay#</u>		
2009		1,257	1,469	887	..	..	..
2010		1,430	1,606	702	..	..	..
2011		1,554	1,646	610	..	..	..
2012		1,459	1,551	515	..	..	..
2013		1,560	1,738	339	..	..	..
2012	Q4	311	345	515	..	..	..
2013	Q1	344	343	518	..	..	..
	Q2	390	460	447	..	..	..
	Q3	415	499	363	..	..	..
	Q4 (P)	411	436	339	..	..	..
2012	December	64	72	515	..	..	..
2013	January	101	96	520	..	..	..
	February	114	116	519	..	..	..
	March	130	131	518	..	..	..
	April	127	142	503	..	..	..
	May	129	159	473	..	..	..
	June	133	158	447	..	..	..
	July	133	182	399	..	..	..
	August	134	156	377	..	..	..
	September	148	162	363	..	..	..
	October	153	175	341	..	..	..
	November	149	152	338	..	..	..
	December (P)	109	109	339	..	..	..

\* Refers to stocks at end of period

#Sand-lime bricks are included with clay bricks

Millions

Production	Deliveries (from)	Stocks*	Production	Deliveries (from)	Stocks*	
						<b>(a) Brick Type</b>
Facings			Engineering			
973	1,135	732	99	109	48	2009
1,124	1,280	570	124	132	39	2010
1,230	1,304	494	152	157	34	2011
1,172	1,239	425	150	146	38	2012
1,260	1,396	288	147	172	16	2013
248	277	425	30	33	38	2012 Q4
274	273	426	37	34	41	2013 Q1
319	367	378	36	48	29	Q2
332	403	307	39	50	19	Q3
335	353	288	35	40	16	Q4 (P)
51	58	425	5	7	38	2012 December
77	75	428	13	10	41	2013 January
92	93	427	10	11	40	February
104	106	426	14	13	41	March
103	114	415	11	14	39	April
107	127	395	13	17	35	May
109	126	378	12	17	29	June
104	145	337	13	19	23	July
108	126	319	13	15	21	August
120	132	307	13	15	19	September
122	142	287	16	16	18	October
124	124	287	12	14	16	November
89	88	288	7	10	16	December (P)
						<b>(b) Material Type</b>
Sand-Lime#			Concrete			
..	..	..	..	..	..	2009
..	..	..	..	..	..	2010
..	..	..	..	..	..	2011
..	..	..	..	..	..	2012
..	..	..	..	..	..	2013
..	..	..	..	..	..	2012 Q4
..	..	..	..	..	..	2013 Q1
..	..	..	..	..	..	Q2
..	..	..	..	..	..	Q3
..	..	..	..	..	..	Q4 (P)
..	..	..	..	..	..	2012 December
..	..	..	..	..	..	2013 January
..	..	..	..	..	..	February
..	..	..	..	..	..	March
..	..	..	..	..	..	April
..	..	..	..	..	..	May
..	..	..	..	..	..	June
..	..	..	..	..	..	July
..	..	..	..	..	..	August
..	..	..	..	..	..	September
..	..	..	..	..	..	October
..	..	..	..	..	..	November
..	..	..	..	..	..	December (P)

Note: Data covering January 2009 to February 2011 were revised in the December 2011 edition of this bulletin. These data are included in this table. For more information on revisions, see the 'Pre-announcements and Summary of Revisions to Monthly Statistics of Building Materials and Components Publication' document on our website.

## BRICKS

Table 10 : Brick Production, Deliveries and Stocks by English region, Wales and Scotland

	North East	Yorks & Humber	North West	West Midlands	East Midlands	East of England
(a) Commons				#		#
Production						
2012	..	..	..	10,289	40,963	..
Q4	..	..	..	2,443	9,629	..
2013 Q1	..	..	..	2,079	10,719	..
Q2	..	..	1,376	..	12,059	..
Q3	..	..	..	..	14,869	..
2013 November	..	..	564	872	4,996	..
Deliveries (from)						
2012	..	..	..	11,327	43,004	..
Q4	..	308	..	2,322	9,622	..
2013 Q1	..	597	1,673	..	11,554	..
Q2	..	..	2,196	3,027	16,675	..
Q3	..	..	2,279	3,002	16,100	..
2013 November	..	..	683	1,309	4,781	..
Stocks *						
2012	2,723	1,447	3,900	4,142	11,933	..
Q4	2,723	1,447	3,900	4,142	11,933	..
2013 Q1	2,349	1,442	3,923	3,740	12,120	..
Q2	2,636	1,293	3,103	3,235	7,489	..
Q3	2,695	836	2,142	3,086	6,232	..
2013 November	2,074	754	1,844	2,190	6,255	..
(b) Facings						
Production						
2012	..	..	..	..	342,094	..
Q4	..	..	13,044	..	85,159	..
2013 Q1	..	17,965	16,207	64,483	78,708	..
Q2	..	18,678	22,111	78,587	88,190	..
Q3	..	19,663	22,070	79,524	96,823	..
2013 November	..	6,536	7,557	30,921	37,058	..
Deliveries (from)						
2012	..	68,227	71,203	289,575	364,569	..
Q4	..	14,687	17,812	64,093	86,199	..
2013 Q1	..	13,839	17,258	62,277	87,343	..
Q2	..	19,954	21,564	86,515	113,522	..
Q3	..	20,447	28,195	100,168	107,474	..
2013 November	..	7,099	8,850	32,550	33,326	..
Stocks *						
2012	..	17,822	28,357	106,214	123,367	..
Q4	..	17,822	28,357	106,214	123,367	..
2013 Q1	..	21,948	27,306	108,420	114,669	..
Q2	..	20,672	27,853	100,492	89,337	..
Q3	..	20,114	21,728	79,767	78,686	..
2013 November	..	17,752	18,347	70,983	79,908	..
(c) Engineering #						
Production						
2012	..	..	..	86,776	..	..
Q4	..	..	..	16,982	..	..
2013 Q1	..	..	..	22,724	..	..
Q2	..	..	..	..	..	..
Q3	..	..	..	..	..	..
2013 November	..	..	..	7,289	..	..
Deliveries (from)						
2012	..	..	..	78,754	..	..
Q4	..	..	..	18,053	..	..
2013 Q1	..	..	..	18,274	..	..
Q2	..	..	..	..	..	..
Q3	..	..	..	30,529	..	..
2013 November	..	..	1,123	9,594	..	..
Stocks *						
2012	..	..	3,358	18,475	..	..
Q4	..	..	3,358	18,475	..	..
2013 Q1	..	..	3,419	22,925	..	..
Q2	..	..	2,658	15,393	..	..
Q3	..	..	788	9,739	..	..
2013 November	..	..	1,085	7,501	..	..

Note : Regions now use Government Office boundaries

\* Refers to stocks at end of period.

South East	South West	England	Wales	Scotland	Great Britain	
#	#					
..	..	..	..	..	136,695	<b>(a) Commons</b>
..	..	..	..	..	33,280	Production
..	..	..	..	..	32,648	2012
..	..	..	..	..	35,487	Q4
..	..	..	..	..	43,993	2013 Q1
..	..	..	..	..	13,047	Q2
..	..	..	..	..	..	Q3
..	..	..	..	..	..	2013 November
..	..	..	..	..	166,284	Deliveries (from)
..	..	..	..	..	35,358	2012
..	..	..	..	..	35,556	Q4
..	..	..	..	..	45,043	2013 Q1
..	..	..	..	..	46,838	Q2
..	..	..	..	..	14,432	Q3
..	..	..	..	..	..	2013 November
..	..	..	..	..	51,883	Stocks *
..	..	..	..	..	51,883	2012
..	1,185	..	..	..	50,290	Q4
..	1,131	..	..	..	40,719	2013 Q1
..	1,175	..	..	..	37,679	Q2
..	1,335	..	..	..	34,671	Q3
..	..	..	..	..	..	2013 November
206,519	..	..	..	..	1,172,281	<b>(b) Facings</b>
46,157	..	..	..	..	247,599	Production
44,972	..	..	..	..	274,034	2012
55,225	..	..	..	..	318,529	Q4
54,737	..	..	..	..	332,079	2013 Q1
19,872	..	..	..	..	124,141	Q2
..	..	..	..	..	..	Q3
..	..	..	..	..	..	2013 November
204,075	..	..	..	..	1,238,790	Deliveries (from)
43,344	..	..	..	..	277,290	2012
41,756	..	..	..	..	272,937	Q4
56,901	..	..	..	..	366,936	2013 Q1
65,972	..	..	..	..	402,905	Q2
19,505	..	..	..	..	124,064	Q3
..	..	..	..	..	..	2013 November
..	..	..	..	..	424,953	Stocks *
..	..	..	..	..	424,953	2012
..	..	..	..	..	426,029	Q4
..	..	..	..	..	377,622	2013 Q1
..	..	..	..	..	306,941	Q2
..	..	..	..	..	287,202	Q3
..	..	..	..	..	..	2013 November
..	..	..	..	..	150,326	<b>(c) Engineering #</b>
..	..	..	..	..	30,360	Production
..	..	..	..	0	37,395	2012
..	..	..	..	0	35,577	Q4
..	..	..	..	0	39,103	2013 Q1
..	..	..	..	0	11,622	Q2
..	..	..	..	0	..	Q3
..	..	..	..	0	..	2013 November
..	..	..	..	..	146,308	Deliveries (from)
..	..	..	..	..	32,562	2012
..	..	..	..	..	34,285	Q4
..	..	..	..	0	47,667	2013 Q1
..	..	..	..	0	49,609	Q2
..	..	..	..	0	13,604	Q3
..	..	..	..	0	..	2013 November
..	..	..	..	..	38,081	Stocks *
..	..	..	..	..	38,081	2012
..	..	..	..	..	41,200	Q4
..	..	..	..	..	29,110	2013 Q1
..	..	..	..	..	18,674	Q2
..	..	..	..	..	16,314	Q3
..	..	..	..	..	..	2013 November

Note: Data covering January 2009 to February 2011 were revised in the December 2011 edition of this bulletin. These data are included in this table. For more information on revisions, see the 'Summary of Revisions to Monthly Statistics of Building Materials and Components Publication' document on our website.

## BRICKS

Table 10 (cont'd) : Brick Production, Deliveries and Stocks by English region, Wales and Scotland

	North East	Yorks & Humber	North West	West Midlands	East Midlands	East of England
<b>(d) All Bricks</b>						
Production						
2011	..	..	..	..	..	..
2012	..	..	..	..	..	..
2012 Q3	..	..	..	96,878	99,600	..
Q4	..	..	..	..	..	..
2013 Q1	..	..	..	87,449	..	..
Q2	..	..	..	..	..	..
Q3	..	..	..	..	..	..
2012 November	..	..	..	21,717	..	..
December	..	..	..	..	26,239	..
2013 January	..	..	..	25,781	25,075	..
February	..	..	..	28,783	..	..
March	..	..	..	32,885	33,937	..
April	..	..	..	..	31,276	..
May	..	..	..	34,376	..	..
June	..	..	..	..	36,661	..
July	..	..	..	..	..	..
August	..	..	..	..	36,772	..
September	..	..	..	38,753	..	..
October	..	..	..	39,640	..	..
November	..	..	..	39,031	..	..
Deliveries (from)						
2011	..	..	111,066	..	..	..
2012	..	..	..	374,077	..	..
2012 Q3	..	..	..	102,599	..	..
Q4	..	..	..	82,867	..	..
2013 Q1	..	..	..	..	..	..
Q2	..	..	..	..	..	..
Q3	..	..	..	133,117	..	..
2012 November	..	..	9,651	30,906	..	..
December	..	..	..	17,570	..	..
2013 January	..	..	..	22,041	..	..
February	..	..	..	27,871	..	..
March	..	..	..	..	..	..
April	..	..	..	34,166	..	..
May	..	..	..	40,131	..	..
June	..	..	..	..	..	..
July	..	..	..	45,930	..	..
August	..	..	..	42,539	..	..
September	..	..	12,415	44,648	..	..
October	..	..	..	46,966	..	..
November	..	..	10,656	43,297	..	..
Stocks *						
2011	..	..	45,025	111,327	..	..
2012	..	..	35,615	128,229	..	..
2012 Q3	..	..	41,835	146,402	..	..
Q4	..	..	35,615	128,229	..	..
2013 Q1	..	..	34,648	134,025	..	..
Q2	..	..	33,614	118,567	..	..
Q3	..	..	24,658	92,122	..	..
2012 November	..	..	39,055	136,684	..	..
December	..	..	35,615	128,229	..	..
2013 January	..	..	34,150	131,969	..	..
February	..	..	34,171	132,881	..	..
March	..	..	34,648	134,025	..	..
April	..	..	34,912	132,555	..	..
May	..	..	34,119	126,800	..	..
June	..	..	33,614	118,567	..	..
July	..	..	30,501	104,848	..	..
August	..	..	27,235	98,017	..	..
September	..	..	24,658	92,122	..	..
October	..	..	22,140	84,796	..	..
November	..	..	21,276	80,530	..	..

Note : Regions now use Government Office boundaries

\* Refers to stocks at end of period.

## BRICKS

Thousands

South East	South West	England	Wales	Scotland	Great Britain	
						<b>(d) All Bricks</b>
						Production
..	..	..	..	..	1,554,270	2011
..	..	..	..	..	1,459,302	2012
..	..	..	..	..	370,435	2012 Q3
..	..	..	..	..	311,239	Q4
..	..	..	..	..	344,077	2013 Q1
..	..	..	..	..	389,593	Q2
..	..	..	..	..	415,175	Q3
..	..	..	..	..	115,874	2012 November
..	..	..	..	..	63,806	December
..	..	..	..	..	100,870	2013 January
..	..	..	..	..	113,515	February
..	..	..	..	..	129,692	March
..	..	..	..	..	127,269	April
..	..	..	..	..	129,497	May
..	..	..	..	..	132,827	June
..	..	..	..	..	133,160	July
..	..	..	..	..	134,321	August
..	..	..	..	..	147,694	September
..	..	..	..	..	153,133	October
..	..	..	..	..	148,810	November
						Deliveries (from)
..	..	..	..	..	1,645,730	2011
..	..	..	..	..	1,551,382	2012
..	..	..	..	..	418,013	2012 Q3
..	..	..	..	..	345,210	Q4
..	..	..	..	..	342,778	2013 Q1
..	..	..	..	..	459,646	Q2
..	..	..	..	..	499,352	Q3
..	..	..	..	..	131,642	2012 November
..	..	..	..	..	72,108	December
..	..	..	..	..	95,957	2013 January
..	..	..	..	..	115,542	February
..	..	..	..	..	131,279	March
..	..	..	..	..	142,226	April
..	..	..	..	..	158,938	May
..	..	..	..	..	158,482	June
..	..	..	..	..	181,528	July
..	..	..	..	..	156,073	August
..	..	..	..	..	161,751	September
..	..	..	..	..	174,950	October
..	..	..	..	..	152,100	November
						Stocks *
..	..	..	..	..	609,939	2011
..	..	..	..	..	514,917	2012
..	..	..	..	..	551,695	2012 Q3
..	..	..	..	..	514,917	Q4
..	..	..	..	..	517,519	2013 Q1
..	..	..	..	..	447,451	Q2
..	..	..	..	..	363,295	Q3
..	..	..	..	..	523,215	2012 November
..	..	..	..	..	514,917	December
..	..	..	..	..	519,824	2013 January
..	..	..	..	..	519,114	February
..	..	..	..	..	517,519	March
..	..	..	..	..	502,562	April
..	..	..	..	..	473,111	May
..	..	..	..	..	447,451	June
..	..	..	..	..	399,058	July
..	..	..	..	..	377,302	August
..	..	..	..	..	363,295	September
..	..	..	..	..	341,477	October
..	..	..	..	..	338,187	November

Note: Data covering January 2009 to February 2011 were revised in the December 2011 edition of this bulletin. These data are included in this table. For more information on revisions, see the 'Summary of Revisions to Monthly Statistics of Building Materials and Components Publication' document on our website.

# CONCRETE PRODUCTS

**Table 11 : Concrete Blocks - Production, Deliveries and Stocks**

Great Britain

	All Types			Dense		
	Production	Deliveries (from)	Stocks*	Production	Deliveries (from)	Stocks*
2002	91,474	91,342	9,014	35,744	36,019	3,963
2003	95,675	96,383	8,513	36,775	37,175	3,684
2004	96,256	94,854	10,088	37,677	37,444	3,690
2005	89,997	89,551	9,680	36,188	36,473	3,465
2006	87,510	87,015	..	34,956	34,741	..
2007	89,951	88,746	..	36,686	35,396	..
2008	67,743	67,136	8,920	29,675	29,889	3,498
2009	50,394	50,639	8,320	22,607	22,748	3,291
2010	53,629	51,758	10,152	22,393	21,731	3,833
2011	54,583	52,901	10,810	22,940	22,101	4,486
2012	51,693	52,021	10,700	21,551	22,323	3,808
2008 Q3	14,894	16,309	10,224	7,131	7,576	4,479
Q4	11,487	12,259	8,920	5,214	5,783	3,498
2009 Q1	12,094	11,649	9,161	5,635	5,438	3,628
Q2	13,463	13,191	9,455	6,192	6,032	3,821
Q3	12,771	13,924	8,203	5,811	6,255	3,390
Q4	12,066	11,874	8,320	4,969	5,023	3,291
2010 Q1	12,614	12,072	8,740	5,033	4,896	3,333
Q2	14,956	14,753	8,990	6,343	6,176	3,513
Q3	15,172	14,343	9,832	6,477	6,125	3,837
Q4	10,887	10,590	10,152	4,541	4,534	3,833
2011 Q1	13,982	12,795	11,516	5,642	5,278	4,197
Q2	14,761	13,911	12,510	6,217	5,871	4,647
Q3	14,208	14,076	12,352	6,217	5,931	4,862
Q4	11,632	12,120	10,810	4,864	5,021	4,486
2012 Q1	13,323	12,642	11,493	5,374	5,426	4,456
Q2	13,268	13,235	11,595	5,535	5,824	4,209
Q3	12,584	13,795	10,471	5,360	5,773	3,773
Q4	12,519	12,349	10,700	5,281	5,300	3,808
2013 Q1	12,125	12,713	10,165	5,212	5,430	3,643
Q2	14,960	16,188	4,401	6,351	6,655	2,190
Q3	15,333	16,042	3,683	6,345	6,609	1,875
2011 December	2,873	3,163	10,810	1,225	1,322	4,486
2012 January	4,229	3,870	..	1,707	1,639	..
February	4,339	3,719	..	1,843	1,653	..
March	4,754	5,053	11,493	1,824	2,133	4,456
April	4,167	4,281	..	1,746	1,874	..
May	4,842	4,756	..	2,014	2,154	..
June	4,258	4,199	11,595	1,775	1,797	4,209
July	4,313	4,285	..	1,828	1,939	..
August	3,927	4,931	..	1,751	1,970	..
September	4,344	4,579	10,471	1,782	1,863	3,773
October	4,642	4,867	..	1,945	2,074	..
November	4,726	4,582	..	2,022	1,943	..
December	3,151	2,900	10,700	1,314	1,283	3,808
2013 January	3,751	3,432	..	1,696	1,500	..
February	3,793	4,431	..	1,506	1,885	..
March	4,580	4,850	10,165	2,010	2,045	3,643
April	4,966	5,451	..	2,250	2,375	..
May	5,303	5,695	..	2,305	2,329	..
June	4,691	5,042	4,401	1,796	1,952	2,190
July	5,458	5,935	..	2,265	2,422	..
August	4,561	4,904	..	1,869	2,076	..
September	5,314	5,203	3,683	2,211	2,111	1,875
October (P)	4,940	4,903	..	2,092	2,062	..
November (P)	4,740	4,266	..	1,953	1,844	..
December (P)	3,267	3,102	..	1,406	1,319	..

\* Refers to stocks at end of period

Missing returns for provisional data (P) have been estimated using an improved methodology. See the 'pre-announcement of any major changes to samples or methodology' on our website



# CONCRETE PRODUCTS

Thousand square metres

Lightweight			Aerated			
Production	Deliveries (from)	Stocks*	Production	Deliveries (from)	Stocks*	
23,478	23,537	2,188	32,252	31,786	2,863	2002
24,991	25,161	2,107	33,909	34,047	2,721	2003
25,462	25,736	2,271	33,117	31,674	4,127	2004
25,561	25,673	2,173	28,248	27,405	4,042	2005
25,345	25,222	..	27,209	27,051	..	2006
25,965	25,667	..	27,300	27,682	..	2007
18,168	18,363	2,149	19,900	18,884	3,273	2008
13,421	13,989	1,522	14,367	13,903	3,507	2009
14,415	13,923	2,044	16,822	16,104	4,276	2010
15,153	14,821	1,728	16,490	15,978	4,596	2011
14,383	14,103	2,024	15,759	15,595	4,868	2012
4,110	4,309	2,338	3,653	4,424	3,406	2008 Q3
3,057	3,260	2,149	3,216	3,216	3,273	Q4
3,213	3,258	2,181	3,247	2,953	3,352	2009 Q1
3,498	3,553	2,125	3,773	3,607	3,510	Q2
3,293	3,765	1,544	3,667	3,903	3,269	Q3
3,416	3,412	1,522	3,681	3,439	3,507	Q4
3,344	3,252	1,601	4,238	3,924	3,806	2010 Q1
4,031	3,950	1,692	4,582	4,627	3,785	Q2
4,208	3,899	2,023	4,487	4,319	3,971	Q3
2,832	2,822	2,044	3,515	3,234	4,276	Q4
3,916	3,665	2,301	4,423	3,852	5,017	2011 Q1
4,008	3,827	2,507	4,537	4,212	5,357	Q2
3,908	3,970	2,218	4,083	4,175	5,272	Q3
3,321	3,359	1,728	3,447	3,739	4,596	Q4
3,559	3,314	1,964	4,389	3,903	5,074	2012 Q1
3,487	3,437	2,006	4,245	3,973	5,380	Q2
3,756	3,887	1,904	3,467	4,135	4,794	Q3
3,580	3,465	2,024	3,658	3,584	4,868	Q4
3,094	3,389	1,730	3,818	3,893	4,793	2013 Q1
4,691	4,809	1,303	3,918	4,723	908	Q2
5,079	5,162	1,210	3,909	4,271	597	Q3
769	823	1,728	878	1,017	4,596	2011 December
1,165	990	..	1,357	1,241	..	2012 January
1,112	998	..	1,384	1,068	..	February
1,281	1,326	1,964	1,648	1,594	5,074	March
1,106	1,100	..	1,315	1,307	..	April
1,303	1,230	..	1,525	1,371	..	May
1,078	1,107	2,006	1,405	1,295	5,380	June
1,206	1,155	..	1,280	1,191	..	July
1,337	1,430	..	839	1,530	..	August
1,213	1,302	1,904	1,348	1,414	4,794	September
1,393	1,453	..	1,304	1,340	..	October
1,333	1,308	..	1,371	1,330	..	November
854	704	2,024	983	914	4,868	December
930	927	..	1,125	1,006	..	2013 January
1,048	1,211	..	1,239	1,334	..	February
1,116	1,252	1,730	1,454	1,553	4,793	March
1,436	1,518	..	1,280	1,558	..	April
1,805	1,771	..	1,192	1,594	..	May
1,449	1,520	1,303	1,446	1,571	908	June
1,853	1,947	..	1,340	1,566	..	July
1,597	1,577	..	1,095	1,251	..	August
1,629	1,638	1,210	1,474	1,454	597	September
1,525	1,506	..	1,323	1,335	..	October (P)
1,433	1,343	..	1,354	1,078	..	November (P)
805	936	..	1,055	847	..	December (P)

Data from December 2011 to June 2012 has been revised following receipt of corrected data. The period August 2007 to November 2011 may also be affected, but non-availability of a back-series of corrected data means that this period cannot be revised, and should be treated with caution. Full details are available in the 'Summary of revision to monthly statistics of building materials and components publication' document on our website

# CONCRETE PRODUCTS

## Table 12 : Concrete Blocks : Production, Deliveries and Stocks by English Region, Wales and Scotland

	North East	Yorks & Humber	North West	West Midlands	East Midlands	East of England
<b>(a) Dense aggregate</b>						
Production						
2012	..	..	2,207	..	..	..
2012 Q3	73	..	547	..	..	..
Q4	..	..	520	..	..	..
2013 Q1	..	414	447	..	..	..
Q2	..	..	606	..	..	..
Q3	..	..	648	..	..	..
Deliveries (from)						
2012	271	..	2,148	..	..	..
2012 Q3	66	..	596	..	..	..
Q4	61	..	438	..	..	..
2013 Q1	..	402	521	..	..	..
Q2	..	..	661	..	..	..
Q3	..	..	688	..	..	..
Stocks *						
2012	..	231	295	..	..	..
2012 Q3	83	246	213	..	..	..
Q4	..	231	295	..	..	..
2013 Q1	..	244	221	..	..	..
Q2	..	138	166	..	106	..
Q3	..	137	125	..	89	..
<b>(b) Other (1)</b>						
Production						
2012	..	..	1,899	..	..	..
2012 Q3	289	..	498	..	..	..
Q4	..	..	449	..	..	..
2013 Q1	..	1,874	387	..	..	..
Q2	..	..	579	..	..	..
Q3	..	..	636	..	..	..
Deliveries (from)						
2012	1,114	..	1,892	..	..	..
2012 Q3	311	..	510	..	..	..
Q4	254	..	432	..	..	..
2013 Q1	..	1,960	444	..	..	..
Q2	..	..	572	..	..	..
Q3	..	..	651	..	..	..
Stocks *						
2012	..	1,434	174	..	..	..
2012 Q3	92	1,376	157	..	..	..
Q4	..	1,434	174	..	..	..
2013 Q1	..	1,347	116	..	..	..
Q2	..	879	123	..	312	..
Q3	..	622	108	..	276	..
<b>(c) Total</b>						
Production						
2012	1,377	9,437	4,105	4,113	6,418	4,918
2012 Q3	362	2,335	1,045	1,042	1,497	1,001
Q4	324	2,505	969	921	1,553	875
2013 Q1	263	2,288	834	1,122	1,518	905
Q2	385	2,737	1,185	1,203	1,796	1,385
Q3	460	2,796	1,284	1,299	1,742	1,740
Deliveries (from)						
2012	1,385	9,475	4,040	4,046	6,106	5,002
2012 Q3	377	2,577	1,106	1,208	1,620	1,200
Q4	314	2,461	870	1,076	1,495	888
2013 Q1	281	2,362	965	1,073	1,577	1,023
Q2	409	2,962	1,233	1,395	1,967	1,505
Q3	457	3,104	1,339	1,287	1,795	1,717
Stocks *						
2012	184	1,665	469	468	1,218	481
2012 Q3	174	1,621	370	624	1,160	494
Q4	184	1,665	469	468	1,218	481
2013 Q1	165	1,591	337	517	1,159	362
Q2	142	1,017	289	325	418	346
Q3	145	760	233	337	364	369

Note : Regions refer to Government Office Regions

\* Refers to stocks at end of period.

# CONCRETE PRODUCTS

Thousand square metres

South East	South West	England	Wales	Scotland	Great Britain	
						<b>(a) Dense aggregate</b>
						Production
..	5,629	..	3,527	..	21,551	2012
..	1,370	3,920	882	558	5,360	2012 Q3
..	1,445	3,799	1,020	463	5,281	Q4
432	1,408	3,777	974	461	5,212	2013 Q1
..	1,811	..	899	..	6,351	Q2
..	..	..	827	..	6,345	Q3
						Deliveries (from)
..	5,779	16,219	4,019	2,084	22,323	2012
..	1,441	4,240	900	634	5,773	2012 Q3
..	1,442	3,752	1,011	536	5,300	Q4
391	1,541	3,946	1,004	480	5,430	2013 Q1
..	..	5,173	927	555	6,655	Q2
..	..	..	848	..	6,609	Q3
						Stocks *
121	..	3,113	390	305	3,808	2012
..	1,362	3,024	382	367	3,773	2012 Q3
121	..	3,113	390	305	3,808	Q4
161	1,274	2,943	359	341	3,643	2013 Q1
..	698	1,602	213	375	2,190	Q2
118	..	..	..	..	1,875	Q3
						<b>(b) Other (1)</b>
						Production
..	1,068	..	445	..	30,142	2012
..	269	7,071	117	35	7,224	2012 Q3
..	201	7,090	115	34	7,238	Q4
1,658	153	6,804	74	34	6,912	2013 Q1
..	219	..	516	..	8,609	Q2
..	..	..	675	..	8,988	Q3
						Deliveries (from)
..	1,003	29,183	415	100	29,698	2012
..	241	7,874	116	31	8,022	2012 Q3
..	200	6,910	99	40	7,049	Q4
1,679	210	7,157	92	34	7,283	2013 Q1
..	..	8,964	532	37	9,533	Q2
..	..	..	725	..	9,433	Q3
						Stocks *
3,608	..	6,766	88	38	6,892	2012
..	253	6,582	72	45	6,698	2012 Q3
3,608	..	6,766	88	38	6,892	Q4
3,587	199	6,411	70	41	6,522	2013 Q1
..	83	2,139	49	24	2,211	Q2
213	..	..	..	..	1,807	Q3
						<b>(c) Total</b>
						Production
8,595	6,697	45,660	3,973	2,061	51,693	2012
2,071	1,640	10,992	999	593	12,584	2012 Q3
2,096	1,646	10,888	1,135	496	12,519	Q4
2,090	1,561	10,581	1,048	495	12,125	2013 Q1
2,219	2,030	12,942	1,415	603	14,960	Q2
1,774	2,252	13,345	1,502	486	15,333	Q3
						Deliveries (from)
8,567	6,782	45,403	4,434	2,184	52,021	2012
2,345	1,682	12,114	1,016	665	13,795	2012 Q3
1,916	1,642	10,662	1,110	577	12,349	Q4
2,070	1,751	11,103	1,095	514	12,713	2013 Q1
2,463	2,201	14,137	1,460	592	16,188	Q2
1,868	2,380	13,947	1,573	522	16,042	Q3
						Stocks *
3,728	1,666	9,879	478	343	10,700	2012
3,548	1,615	9,606	454	412	10,471	2012 Q3
3,728	1,666	9,879	478	343	10,700	Q4
3,748	1,473	9,354	430	382	10,165	2013 Q1
425	780	3,740	262	399	4,401	Q2
331	604	3,142	193	347	3,683	Q3

(1) Lightweight aggregate including aerated concrete blocks where appropriate.

Data from December 2011 to June 2012 has been revised following receipt of corrected data. The period August 2007 to November 2011 may also be affected, but non-availability of a back-series of corrected data means that this period cannot be revised, and should be treated with caution. Full details are available in the 'Summary of revision to monthly statistics of building materials and components publication' document on our website.

# OTHER BUILDING MATERIALS

**Table 13 : Other Building Materials**

		Great Britain			United Kingdom
		Concrete Roofing Tiles (Th.sq.m. of roof area covered)			Ready-Mixed Concrete # (Th.cu.m.)
		Production	Deliveries	Stocks *	Deliveries
2002		25,023	24,390	4,586	22,597
2003		21,437	21,401	2,982	22,289
2004		20,739	19,403	2,850	22,856
2005		25,719	24,489	4,902	22,432
2006		23,730	24,118	4,426	23,029
2007		23,551	23,812	3,646	23,548
2008		20,084	19,926	3,899	20,051
2009		14,079	15,612	2,344	14,069
2010		17,817	17,146	3,023	14,038
2011		17,712	17,684	3,126	15,121
2012		17,224	17,159	3,191	13,758
2004	Q3	4,920	5,134	3,048	6,038
	Q4	5,055	5,175	2,850	5,553
2005	Q1	5,787	4,779	3,732	5,137
	Q2	7,502	6,406	5,818	5,994
	Q3	6,135	7,103	4,850	5,920
	Q4	6,295	6,200	4,902	5,381
2006	Q1	6,792	6,252	5,418	5,445
	Q2	6,002	5,709	5,708	5,995
	Q3	5,448	6,371	4,688	6,047
	Q4	5,489	5,787	4,426	5,542
2007	Q1	6,618	5,629	5,368	5,554
	Q2	5,775	5,728	5,360	6,103
	Q3	5,129	6,541	3,929	6,205
	Q4	6,028	5,914	3,646	5,686
2008	Q1	5,708	5,421	3,922	5,193
	Q2	5,815	5,679	4,488	5,773
	Q3	4,657	4,977	3,840	4,902
	Q4	3,903	3,849	3,899	4,183
2009	Q1	3,664	3,281	4,273	3,583
	Q2	3,055	3,936	3,391	3,637
	Q3	3,580	4,447	2,522	3,628
	Q4	3,779	3,949	2,344	3,221
2010	Q1	4,129	3,505	2,967	3,328
	Q2	4,961	4,922	3,008	3,819
	Q3	4,783	4,824	2,967	3,831
	Q4	3,945	3,894	3,023	3,060
2011	Q1	4,820	4,079	3,858	3,827
	Q2	4,565	4,398	4,022	3,907
	Q3	4,210	4,901	3,316	3,908
	Q4	4,116	4,306	3,126	3,479
2012	Q1	4,673	3,928	3,872	3,463
	Q2	4,236	4,100	4,008	3,399
	Q3	3,971	4,885	3,093	3,556
	Q4	4,344	4,246	3,191	3,340
2013	Q1	4,319	3,876	3,634	3,325
	Q2	4,112	4,533	3,212	4,108
	Q3	Updates have been temporarily suspended <sup>1</sup>			3,972

\* Refers to stocks at the end of the period.

# In April 2012, the Mineral Products Association (who provide these figures), estimated that data understates UK deliveries by around 20-25%. Previously, they had estimated that figures understate UK deliveries by 14-18%.

Concrete roofing tiles data underwent imputation for a non-responder/s in each quarter from 2012Q1 to 2013Q2.

# Comparison of Imports & Exports

4-quarter moving totals



The data is taken from Table 14

# EXTERNAL TRADE

**Table 14 : Value of Overseas Trade in Selected Materials and Components  
for Constructional Use : Imports (cif) & Exports (fob)**

United Kingdom		Current Prices (£'000)					
		2007	2008	2009	2010	2011	2012
<b>All Building Materials &amp; Components</b>	Imports	12,415,890	12,697,046	10,399,489	11,632,361	12,206,507	11,844,901
	Exports	6,147,721	6,747,415	5,491,055	5,772,232	6,143,891	5,585,912
	Balance	(6,268,169)	(5,949,631)	(4,908,434)	(5,860,129)	(6,062,616)	(6,258,989)
<b>All Raw Materials</b>	Imports	213,589	228,019	158,706	174,275	200,736	172,288
	Exports	124,957	116,930	135,125	132,349	140,525	78,895
	Balance	(88,632)	(111,089)	(23,581)	(41,926)	(60,211)	(93,393)
Sand for construction	Imports	6,455	6,369	5,916	5,259	7,558	8,514
	Exports	7,769	9,373	7,967	7,398	7,783	6,150
Crushed Rock : uncoated	Imports	38,882	43,442	32,030	36,490	41,280	30,691
	Exports	71,990	77,930	76,898	73,902	78,237	62,209
Crushed Rock : coated	Imports	2,927	3,206	2,227	2,642	3,057	4,376
	Exports	3,937	3,862	3,061	2,988	4,727	4,200
Building Stone : unprocessed	Imports	115,064	124,436	93,174	99,236	107,354	110,981
	Exports	3,209	2,159	2,114	4,053	3,716	1,881
Slate : unprocessed	Imports	11,590	9,295	6,168	5,799	4,686	5,165
	Exports	1,579	813	1,924	844	922	886
Gypsum & Anhydrite	Imports	8,626	8,301	8,353	7,040	7,284	8,119
	Exports	493	899	768	1,148	1,035	1,141
Bituminous Shale	Imports	30,045	32,970	10,838	17,809	29,517	4,442
	Exports	35,980	21,894	42,393	42,016	44,105	2,428
<b>All Semi-Manufactures</b>	Imports	2,196,078	1,972,139	1,389,572	1,639,598	1,698,664	1,649,529
	Exports	644,415	648,822	426,190	480,686	486,111	440,825
	Balance	(1,551,663)	(1,323,317)	(963,382)	(1,158,912)	(1,212,553)	(1,208,704)
Clinker	Imports	60,554	35,973	18,520	17,331	19,940	25,772
	Exports	1,899	1,271	835	1,205	2,763	1,989
Sawn Wood > 6mm thick	Imports	915,900	610,292	554,187	705,638	622,813	626,106
	Exports	32,010	20,957	16,025	19,437	14,671	12,043
Densified Wood	Imports	2,332	1,767	1,452	2,301	1,942	2,179
	Exports	319	272	268	518	569	509
Particle Board	Imports	55,934	45,497	27,913	30,755	34,479	27,318
	Exports	9,377	8,920	8,382	8,875	8,044	9,363
Laminated Wood	Imports	282,912	296,969	215,021	146,691	133,222	120,624
	Exports	23,172	21,935	15,839	11,698	11,051	7,100
Fibreboard	Imports	72,499	61,614	56,511	53,901	60,031	59,438
	Exports	10,575	8,966	15,055	24,727	11,162	12,143
Steel for Fabrication	Imports	463,477	529,327	184,164	286,866	354,980	339,984
	Exports	257,126	301,366	185,537	216,815	206,955	175,148
Aluminium for Fabrication	Imports	277,251	315,948	268,155	325,157	408,816	391,805
	Exports	234,348	216,596	123,494	131,665	160,722	153,622
Profiles of Vinyl Chloride	Imports	41,560	44,169	44,827	35,911	25,099	27,139
	Exports	33,766	25,781	23,770	23,337	24,027	23,339
Slag for Construction	Imports	8,607	11,580	2,331	5,825	1,906	2,074
	Exports	1,231	1,018	921	1,112	1,280	1,014
Tar & Bituminous Mixtures	Imports	12,285	17,424	15,156	27,742	33,081	25,013
	Exports	27,895	27,680	22,781	27,613	26,921	25,861
Lime	Imports	2,767	1,579	1,335	1,480	2,355	2,077
	Exports	12,697	14,060	13,283	13,684	17,946	18,694

## EXTERNAL TRADE

Current Prices (£'000)

2012 Q3	Q4	2013 Q1	Q2	Q3		
2,988,455	2,822,171	2,981,983 (R)	3,183,841 (R)	3,355,975	Imports	<b>All Building Materials &amp; Components</b>
1,411,217	1,358,212	1,361,552 (R)	1,479,531 (R)	1,509,382	Exports	
(1,577,238)	(1,463,959)	(1,620,431) (R)	(1,704,310) (R)	(1,846,593)	Balance	
44,084	34,518	37,462	46,820 (R)	51,137	Imports	<b>All Raw Materials</b>
21,782	19,757	15,253	23,490 (R)	25,162	Exports	
(22,302)	(14,761)	(22,209)	(23,330) (R)	(25,975)	Balance	
2,603	2,152	2,155	2,310	2,526	Imports	Sand for construction
1,707	1,392	1,262	1,839 (R)	1,569	Exports	
7,624	5,935	5,825	7,211 (R)	6,975	Imports	Crushed Rock : uncoated
17,601	15,453	11,553	17,714 (R)	20,529	Exports	
1,612	1,157	347	431	449	Imports	Crushed Rock : coated
968	1,387	999	1,623	1,185	Exports	
28,240	21,128	25,426	32,204 (R)	37,009	Imports	Building Stone : unprocessed
438	530	355	518	351	Exports	
1,551	1,368	1,437	1,587	1,569	Imports	Slate : unprocessed
156	131	416	308	616	Exports	
1,626	2,500	1,940	2,249	2,111	Imports	Gypsum & Anhydrite
374	197	492	306	217	Exports	
828	278	332	828	498	Imports	Bituminous Shale
538	667	176	1,182	695	Exports	
394,238	362,918	418,080 (R)	469,398 (R)	450,778	Imports	<b>All Semi-Manufactures</b>
113,660	102,397	116,564 (R)	116,339 (R)	120,094	Exports	
(280,578)	(260,521)	(301,516) (R)	(353,059) (R)	(330,684)	Balance	
7,389	6,203	6,772	7,298	10,075	Imports	Clinker
553	149	41	118	88	Exports	
149,354	133,049	147,154 (R)	182,078 (R)	177,860	Imports	Sawn Wood > 6mm thick
3,099	2,669	2,933	4,005 (R)	4,332	Exports	
422	440	574	474	617	Imports	Densified Wood
153	106	151	216	161	Exports	
7,063	6,887	8,065 (R)	9,159 (R)	9,217	Imports	Particle Board
1,888	1,818	1,384 (R)	1,311 (R)	1,531	Exports	
28,388	26,794	31,432	36,187 (R)	33,507	Imports	Laminated Wood
1,465	1,370	1,423	1,636 (R)	2,382	Exports	
15,137	14,501	15,363	14,383 (R)	16,169	Imports	Fibreboard
2,615	2,722	2,734	2,677 (R)	2,300	Exports	
77,051	71,386	91,278 (R)	92,839 (R)	81,329	Imports	Steel for Fabrication
45,263	39,202	50,443 (R)	46,002 (R)	49,195	Exports	
94,623	90,364	104,194 (R)	108,409 (R)	107,962	Imports	Aluminium for Fabrication
40,051	37,635	43,047 (R)	42,700 (R)	41,217	Exports	
6,374	6,093	5,546	6,909 (R)	6,668	Imports	Profiles of Vinyl Chloride
6,169	6,138	5,251 (R)	6,771 (R)	6,393	Exports	
862	238	491	963	1,500	Imports	Slag for Construction
155	276	260	614	425	Exports	
7,188	6,222	6,861	10,231 (R)	5,453	Imports	Tar & Bituminous Mixtures
7,066	6,106	3,685	6,070 (R)	6,699	Exports	
387	741	350	468	421	Imports	Lime
5,183	4,206	5,212	4,219 (R)	5,371	Exports	

# EXTERNAL TRADE

**Table 14 : Value of Overseas Trade in Selected Materials and Components for Constructional Use : Imports (cif) & Exports (fob)**

United Kingdom		Current Prices (£'000)					
		2007	2008	2009	2010	2011	2012
<b>All Products &amp; Components</b>	Imports	10,006,223	10,496,888	8,851,211	9,818,488	10,307,107	10,023,084
	Exports	5,378,349	5,981,663	4,929,740	5,159,197	5,517,255	5,066,192
	Balance	(4,627,874)	(4,515,225)	(3,921,471)	(4,659,291)	(4,789,852)	(4,956,892)
Wood sleepers (rail & tram)	Imports	7,907	10,736	5,761	5,065	7,634	12,186
	Exports	905	1,074	688	717	893	2,849
Building Stone : processed	Imports	243,019	252,176	211,999	217,570	177,755	177,141
	Exports	34,465	38,557	37,466	30,751	10,603	10,047
Slate Roofing Tiles*	Imports	58,165	65,872	57,067	63,188	..	..
	Exports	6,941	6,559	8,552	6,286	..	..
Other Slate Products*	Imports	8,963	8,204	8,002	8,381	..	..
	Exports	2,348	1,643	1,141	1,725	..	..
Slate Products*	Imports	..	..	..	..	72,289	71,054
	Exports	..	..	..	..	7,413	6,481
Portland Cement	Imports	59,422	65,930	54,475	52,246	48,735	44,297
	Exports	26,525	13,271	4,897	4,178	5,481	5,251
Other Cements	Imports	24,705	31,452	47,618	50,669	61,532	43,621
	Exports	31,336	29,824	24,202	35,097	37,960	40,394
Steel Sheet Piling	Imports	71,747	78,763	48,577	61,527	51,576	64,412
	Exports	20,205	32,009	24,175	16,226	18,568	14,396
Ready-Mixed Concrete	Imports	686	826	711	822	36	34
	Exports	10,378	12,639	4,600	3,378	3,036	3,117
Concrete Reinforcing Bars	Imports	181,795	210,556	72,138	86,842	135,802	153,766
	Exports	107,236	194,136	68,087	60,252	46,970	55,782
Mortars	Imports	6,225	7,021	7,949	7,357	8,852	10,212
	Exports	5,772	6,410	5,360	3,757	8,936	4,776
Clay Bricks	Imports	35,245	25,877	18,675	19,778	22,918	24,048
	Exports	10,591	7,133	3,703	3,162	2,842	4,109
Clay Roofing Tiles	Imports	10,348	10,104	7,576	9,116	8,889	12,165
	Exports	303	276	511	589	207	192
Clay Pipes	Imports	669	313	146	225	258	614
	Exports	5,518	5,775	4,177	3,472	4,124	3,532
Other Clay Products	Imports	5,602	6,668	5,453	5,225	6,068	5,351
	Exports	17,502	18,852	2,851	3,188	3,566	2,702
Concrete Blocks & Bricks	Imports	11,475	8,615	4,421	4,369	7,466	8,461
	Exports	27,318	21,102	11,844	9,203	9,421	7,880
Concrete Roofing Tiles*	Imports	4,664	7,195	7,342	5,017	..	..
	Exports	7,013	3,844	2,402	2,949	..	..
Other Concrete Tiles & Paving*	Imports	16,130	18,353	15,576	13,297	..	..
	Exports	38,280	34,756	19,151	13,594	..	..
Concrete Tiles and Pavings*	Imports	..	..	..	..	19,565	18,118
	Exports	..	..	..	..	13,478	11,854
Prefabricated Concrete Products	Imports	26,763	34,841	23,582	28,811	20,514	23,137
	Exports	23,240	19,042	8,967	12,390	4,432	4,078
Concrete Pipes	Imports	32,767	36,740	40,646	45,485	61,426	51,663
	Exports	32,536	31,413	30,366	24,339	26,578	25,227



Current Prices (£'000)

2012 Q3	Q4	2013 Q1	Q2	Q3		
2,550,133	2,424,735	2,526,441 (R)	2,667,623 (R)	2,854,060	Imports	<b>All Products &amp; Components</b>
1,275,775	1,236,058	1,229,735 (R)	1,339,702 (R)	1,364,126	Exports	
(1,274,358)	(1,188,677)	(1,296,706) (R)	(1,327,921) (R)	(1,489,934)	Balance	
3,391	3,327	2,432	3,299	1,902	Imports	Wood sleepers (rail & tram)
498	28	13	69	58	Exports	
45,655	42,645	45,081	44,590 (R)	47,724	Imports	Building Stone : processed
2,905	2,572	2,327 (R)	3,022 (R)	2,750	Exports	
..	..	..	..	..	Imports	Slate Roofing Tiles*
..	..	..	..	..	Exports	
..	..	..	..	..	Imports	Other Slate Products*
..	..	..	..	..	Exports	
18,392	17,900	15,891	17,384 (R)	20,559	Imports	Slate Products*
1,375	2,396	1,797	2,390	2,597	Exports	
11,768	9,341	11,518	13,015 (R)	15,270	Imports	Portland Cement
1,099	1,473	879	1,275	1,457	Exports	
11,068	9,736	10,466	13,467 (R)	15,127	Imports	Other Cements
10,006	9,518	10,852	9,573	10,346	Exports	
12,820	15,148	16,010	15,956 (R)	14,800	Imports	Steel Sheet Piling
3,241	4,269	4,298	6,103	4,114	Exports	
0	10	9	103	76	Imports	Ready-Mixed Concrete
905	680	527	570 (R)	573	Exports	
29,093	28,215	38,634 (R)	41,654	52,588	Imports	Concrete Reinforcing Bars
21,413	12,823	12,722	14,947	12,314	Exports	
2,733	2,557	3,056 (R)	4,380 (R)	5,848	Imports	Mortars
835	1,779	2,347	1,481 (R)	854	Exports	
6,475	4,806	7,844	8,506 (R)	9,019	Imports	Clay Bricks
1,252	939	565	904 (R)	928	Exports	
2,457	2,975	2,185	2,619	3,836	Imports	Clay Roofing Tiles
37	76	27	16	49	Exports	
61	29	347	291	224	Imports	Clay Pipes
905	1,001	998 (R)	1,020 (R)	1,023	Exports	
1,418	1,306	1,263	1,210 (R)	1,892	Imports	Other Clay Products
669	480	414	444 (R)	409	Exports	
2,315	2,087	2,083	2,544 (R)	3,780	Imports	Concrete Blocks & Bricks
1,931	1,307	1,291	2,260 (R)	1,852	Exports	
..	..	..	..	..	Imports	Concrete Roofing Tiles*
..	..	..	..	..	Exports	
..	..	..	..	..	Imports	Other Concrete Tiles & Paving*
..	..	..	..	..	Exports	
5,014	3,724	3,491	4,441 (R)	5,043	Imports	Concrete Tiles and Pavings*
3,464	2,220	2,106	3,498 (R)	3,398	Exports	
5,840	7,815	7,818 (R)	9,818 (R)	6,623	Imports	Prefabricated Concrete Products
1,004	1,153	781	577 (R)	913	Exports	
13,308	11,681	15,226	11,889 (R)	16,105	Imports	Concrete Pipes
5,917	6,703	5,029	9,736	10,726	Exports	

\* Due to changes to in European Commission product classifications Slate Roofing Tiles and Other Slate Products have been combined. Similarly, Concrete Roofing Tiles and Other Concrete Tiles and Pavings have been combined.

# EXTERNAL TRADE

**Table 14 : Value of Overseas Trade in Selected Materials and Components for Constructional Use : Imports (cif) & Exports (fob)**

United Kingdom		Current Prices (£'000)					
		2007	2008	2009	2010	2011	2012
<b>Products &amp; Components (continued)</b>							
Structural Units (steel)	Imports	526,140	564,645	470,772	604,136	648,018	329,443
	Exports	498,331	604,520	505,127	486,891	472,789	165,219
Structural Units (aluminium)	Imports	220,258	251,909	292,334	178,196	235,864	245,771
	Exports	81,777	98,289	71,158	54,971	61,224	61,176
Steel Tubes & Hollow Sections	Imports	142,420	157,616	108,794	130,955	154,120	161,987
	Exports	114,756	132,537	82,990	108,503	128,588	107,576
Bituminous Roofing Felt*	Imports	25,627	30,853	35,139	39,835	..	..
	Exports	5,406	3,507	3,392	2,744	..	..
Other Asphalt products*	Imports	9,966	9,999	9,987	10,750	..	..
	Exports	16,768	18,030	19,595	14,474	..	..
Asphalt Products*	Imports	..	..	..	..	54,421	57,425
	Exports	..	..	..	..	18,070	15,163
Mineral Insulating Materials	Imports	81,851	78,961	74,096	81,060	83,477	87,113
	Exports	139,360	132,697	106,865	146,430	164,857	166,592
Glass Fibre**	Imports	1,482	1,185	552	381	602	..
	Exports	1,188	2,829	1,220	1,075	2,669	..
Fibre Cement Products	Imports	31,344	28,053	28,663	31,019	35,084	37,205
	Exports	6,668	7,680	4,847	5,849	9,199	9,134
Building Plasters <sup>1</sup>	Imports	6,172	6,868	8,845	..	..	..
	Exports	7,622	8,077	7,475	..	..	..
Plasters <sup>1</sup>	Imports	..	..	..	13,820	11,656	11,629
	Exports	..	..	..	7,905	9,168	9,201
Plasterboard	Imports	30,302	16,057	13,683	15,007	18,972	15,534
	Exports	19,798	18,397	16,505	12,912	12,522	12,649
Copper Pipes	Imports	217,861	245,212	182,487	241,116	228,049	208,675
	Exports	153,412	171,581	116,520	146,447	142,770	118,294
Lead Pipes & Fittings**	Imports	93	18	509	148	..	..
	Exports	48	626	209	243	..	..
Zinc Pipes & Fittings*	Imports	1,154	918	494	757	..	..
	Exports	7,166	6,016	4,388	914	..	..
Other Zinc Building Products*	Imports	12,447	13,117	10,409	13,000	..	..
	Exports	20,946	22,026	22,639	26,529	..	..
Zinc Building Products*	Imports	..	..	..	..	12,933	14,449
	Exports	..	..	..	..	12,933	35,406
Plastic Pipes	Imports	114,727	133,929	117,126	105,667	114,260	108,156
	Exports	205,332	211,718	202,745	149,389	156,648	163,915
Other Plastic Building Products	Imports	148,828	149,235	138,250	148,270	157,129	153,056
	Exports	115,008	117,407	96,902	110,278	129,742	104,823
Builders Ironmongery	Imports	498,373	505,665	278,144	312,316	314,993	337,893
	Exports	157,424	165,476	94,402	112,191	128,039	122,964
Nails & Screws	Imports	59,853	61,080	48,123	66,865	64,896	61,113
	Exports	12,553	12,851	8,281	8,949	11,186	7,495
Mastics, Putty	Imports	148,599	151,898	132,061	143,430	151,902	164,617
	Exports	103,998	119,256	110,080	115,349	139,748	128,071
Paints & Varnishes	Imports	339,581	356,451	345,977	376,374	403,309	420,208
	Exports	442,126	551,564	503,518	552,294	622,468	630,022

<sup>1</sup> From Q1 2010 onwards the Plasters category will contain Building Plaster and Other Plasters as Building Plasters data is no longer collected

## EXTERNAL TRADE

Current Prices (£'000)

2012 Q3	Q4	2013 Q1	Q2	Q3	Products & Components (continued)	
114,596	79,661	64,515 (R)	78,776 (R)	153,829	Imports	Structural Units (steel)
43,295	39,903	40,791 (R)	44,793 (R)	64,270	Exports	
53,747	66,641	60,574 (R)	66,296 (R)	81,770	Imports	Structural Units (aluminium)
17,644	17,122	19,793	16,545 (R)	15,215	Exports	
39,973	32,809	31,140 (R)	31,663 (R)	35,445	Imports	Steel Tubes & Hollow Sections
23,334	21,959	24,288 (R)	27,260 (R)	21,952	Exports	
..	..	..	..	..	Imports	Bituminous Roofing Felt*
..	..	..	..	..	Exports	
..	..	..	..	..	Imports	Other Asphalt products*
..	..	..	..	..	Exports	
15,692	14,061	16,371 (R)	14,212 (R)	18,882	Imports	Asphalt Products*
3,814	2,946	3,268	2,885	2,856	Exports	
23,084	22,072	19,465 (R)	20,622 (R)	21,241	Imports	Mineral Insulating Materials
41,819	37,590	38,952	39,555 (R)	42,458	Exports	
..	..	..	..	..	Imports	Glass Fibre**
..	..	..	..	..	Exports	
10,424	9,277	9,307	10,286	14,515	Imports	Fibre Cement Products
2,311	2,275	1,814	2,302	2,095	Exports	
..	..	..	..	..	Imports	Building Plasters1
..	..	..	..	..	Exports	
2,869	2,312	2,153 (R)	2,192	2,351	Imports	Plasters1
2,259	2,321	2,029	1,834	1,611	Exports	
3,672	2,758	3,717	3,511	3,813	Imports	Plasterboard
3,378	2,919	2,749	2,586	3,212	Exports	
52,566	43,669	55,065 (R)	54,428 (R)	53,110	Imports	Copper Pipes
27,592	28,764	31,365 (R)	33,546 (R)	30,716	Exports	
..	..	..	..	..	Imports	Lead Pipes & Fittings**
..	..	..	..	..	Exports	
..	..	..	..	..	Imports	Zinc Pipes & Fittings*
..	..	..	..	..	Exports	
..	..	..	..	..	Imports	Other Zinc Building Products*
..	..	..	..	..	Exports	
4,924	2,722	3,187	3,553 (R)	3,339	Imports	Zinc Building Products*
13,203	6,531	6,730	6,246	6,319	Exports	
27,805	24,048	29,574 (R)	30,368 (R)	34,421	Imports	Plastic Pipes
45,125	32,428	35,820 (R)	42,988 (R)	42,065	Exports	
38,788	35,986	39,128 (R)	43,218 (R)	46,890	Imports	Other Plastic Building Products
25,670	25,027	25,952 (R)	26,936 (R)	27,769	Exports	
87,841	75,149	78,727 (R)	85,847 (R)	80,229	Imports	Builders Ironmongery
30,919	29,230	30,160 (R)	39,474 (R)	57,240	Exports	
14,927	14,336	15,818	18,635 (R)	22,207	Imports	Nails & Screws
1,788	1,756	2,145	2,198	1,761	Exports	
43,445	39,861	39,035 (R)	45,062 (R)	45,759	Imports	Mastics, Putty
33,335	30,364	29,824 (R)	33,400 (R)	34,574	Exports	
108,597	96,725	108,004 (R)	110,256 (R)	116,049	Imports	Paints & Varnishes
156,819	147,621	154,884 (R)	170,126 (R)	174,276	Exports	

\* Due to changes to in European Commission product classifications Bituminous Roofing Felt and Other Asphalt products have been combined. Similarly, Zinc Pipes & Fittings and Other Zinc Building Products have been combined.

\*\* Data for Lead Pipes and Fittings and Glass Fibre are no longer collected.

# EXTERNAL TRADE

**Table 14 : Value of Overseas Trade in Selected Materials and Components for Constructional Use : Imports (cif) & Exports (fob)**

United Kingdom		Current Prices (£'000)					
		2007	2008	2009	2010	2011	2012
<b>Products &amp; Components (continued)</b>							
Unglazed Ceramic Tiles	Imports	64,691	71,099	62,181	56,551	63,864	62,449
	Exports	4,420	3,607	2,424	2,829	2,817	3,473
Glazed Ceramic Tiles	Imports	290,867	279,656	256,303	224,557	212,986	210,481
	Exports	20,554	17,706	15,671	15,455	18,784	17,616
Ceramic Sanitaryware	Imports	181,603	174,194	159,123	168,666	178,028	178,028
	Exports	58,229	53,471	37,635	37,883	37,259	32,173
Plastic Sanitaryware	Imports	126,472	120,004	114,695	112,513	109,817	107,300
	Exports	78,811	83,908	79,444	67,886	62,582	51,630
Metal Sanitaryware	Imports	139,820	143,118	111,737	124,666	136,536	121,981
	Exports	33,511	33,167	31,969	28,274	32,644	38,568
Flat Glass	Imports	71,800	61,061	53,819	61,048	64,992	65,254
	Exports	83,174	107,783	60,380	73,175	109,162	79,461
Other Glass Products	Imports	76,235	98,993	82,857	81,083	85,002	82,883
	Exports	37,712	40,296	34,188	33,081	32,612	32,277
Wood Veneers	Imports	38,516	39,407	26,102	31,681	36,202	33,643
	Exports	10,243	10,034	5,747	5,824	7,593	7,341
Wood Mouldings	Imports	73,907	64,579	55,648	66,802	59,139	58,455
	Exports	18,289	11,169	8,861	9,660	8,977	8,236
Wood Block Flooring	Imports	125,111	125,242	112,661	144,394	139,916	150,548
	Exports	5,465	6,136	5,746	4,535	4,540	4,801
Other Builder's Woodwork	Imports	109,023	101,242	80,645	99,394	89,758	89,209
	Exports	19,079	15,908	14,395	14,319	16,308	13,673
Windows (wood)	Imports	84,257	121,171	110,061	111,934	118,893	113,086
	Exports	12,880	10,219	10,721	7,786	9,885	8,572
Doors (wood)	Imports	205,158	209,133	184,609	217,810	202,006	190,705
	Exports	37,008	26,929	19,395	16,873	13,323	15,808
Doors & Windows (steel)	Imports	40,294	39,652	39,726	35,987	35,431	38,650
	Exports	25,824	26,300	20,643	19,222	18,996	23,981
Doors & Windows (aluminium)	Imports	65,655	63,705	64,279	72,365	70,526	71,969
	Exports	32,687	25,473	24,410	19,950	24,141	18,529
Doors & Windows (plastic)	Imports	39,459	39,377	43,885	46,337	52,738	56,590
	Exports	63,218	56,119	41,193	44,433	39,423	30,131
Cork Tiles	Imports	2,877	2,258	1,779	2,951	4,018	2,999
	Exports	1,611	1,641	1,702	1,646	2,139	1,835
Linoleum Floor Coverings	Imports	242,787	256,585	244,149	279,065	317,850	306,860
	Exports	195,735	224,522	213,628	228,832	233,662	214,599
Wallpaper	Imports	58,962	58,636	54,487	56,701	58,370	59,047
	Exports	67,165	73,506	66,782	82,940	85,873	76,111
Textile Wall Coverings	Imports	1,572	2,833	2,346	3,323	3,007	3,306
	Exports	598	500	357	609	688	623

# EXTERNAL TRADE

Current Prices (£'000)

2012 Q3	Q4	2013 Q1	Q2	Q3		
<b>Products &amp; Components (continued)</b>						
15,225 1,020	14,336 510	18,063 (R) 600	17,676 (R) 672	20,643 705	Imports Exports	Unglazed Ceramic Tiles
52,402 4,278	45,592 4,193	55,024 (R) 4,469	49,677 (R) 5,113 (R)	51,149 4,423	Imports Exports	Glazed Ceramic Tiles
44,695 8,684	41,225 7,342	44,657 (R) 8,459	45,021 (R) 8,493 (R)	45,206 8,886	Imports Exports	Ceramic Sanitaryware
27,561 13,433	24,697 11,719	29,453 12,299 (R)	31,141 (R) 12,653 (R)	28,341 13,740	Imports Exports	Plastic Sanitaryware
30,501 9,889	28,599 11,621	32,088 (R) 9,403	30,064 (R) 10,073 (R)	31,806 8,002	Imports Exports	Metal Sanitaryware
17,536 15,269	15,893 16,543	11,796 12,438	11,063 (R) 12,177	14,101 11,191	Imports Exports	Flat Glass
21,437 8,868	17,910 7,397	18,528 (R) 6,039	21,023 (R) 6,438 (R)	20,827 8,536	Imports Exports	Other Glass Products
8,799 1,759	8,292 1,387	9,081 1,243	8,269 (R) 1,260	9,557 1,582	Imports Exports	Wood Veneers
13,866 2,272	12,692 1,870	14,889 1,795	17,417 (R) 2,117	16,778 2,204	Imports Exports	Wood Mouldings
42,648 1,272	34,194 1,213	34,658 1,206	33,357 1,074	33,769 1,448	Imports Exports	Wood Block Flooring
21,769 2,509	21,407 3,620	20,877 3,283	26,656 (R) 4,141 (R)	27,219 3,774	Imports Exports	Other Builder's Woodwork
27,568 2,420	28,506 2,396	26,170 1,806 (R)	29,759 (R) 2,167 (R)	30,735 3,383	Imports Exports	Windows (wood)
51,319 4,751	46,725 3,891	48,890 2,944	54,446 3,094	52,481 3,704	Imports Exports	Doors (wood)
9,400 6,439	8,977 6,668	9,076 (R) 7,563 (R)	9,584 (R) 5,267	10,512 6,088	Imports Exports	Doors & Windows (steel)
17,105 4,489	17,865 3,810	14,809 4,232 (R)	19,335 (R) 3,700 (R)	17,185 4,815	Imports Exports	Doors & Windows (aluminium)
14,976 7,537	11,411 7,656	12,898 6,589	14,931 7,498	13,271 8,018	Imports Exports	Doors & Windows (plastic)
650 476	864 344	792 476	833 527	781 646	Imports Exports	Cork Tiles
75,589 56,544	73,564 48,877	79,921 (R) 54,686 (R)	83,756 (R) 55,453 (R)	92,599 55,460	Imports Exports	Linoleum Floor Coverings
13,430 20,560	16,897 19,981	14,847 (R) 20,032	14,854 (R) 22,630 (R)	15,046 19,860	Imports Exports	Wallpaper
786 158	887 143	1,069 211	1,260 (R) 241 (R)	1,315 172	Imports Exports	Textile Wall Coverings

# EXTERNAL TRADE

**Table 14 : Value of Overseas Trade in Selected Materials and Components  
for Constructional Use : Imports (cif) & Exports (fob)**

United Kingdom		Current Prices (£'000)					
		2007	2008	2009	2010	2011	2012
<b>Products &amp; Components (continued)</b>							
Fitted Kitchens (assembled)	Imports	144,017	171,688	130,058	111,345	80,006	81,101
	Exports	35,322	24,163	17,307	16,122	15,729	19,679
Prefabricated Buildings (wood)	Imports	49,086	40,341	34,264	32,687	34,909	30,816
	Exports	27,807	15,170	13,234	10,546	8,391	10,218
Prefabricated Buildings (steel)	Imports	30,083	50,546	46,291	29,783	37,366	26,665
	Exports	27,464	46,140	48,512	37,158	50,070	57,755
Prefabricated Buildings (other)	Imports	73,414	74,165	44,887	34,323	29,862	36,418
	Exports	35,795	72,310	28,104	17,643	19,082	27,935
Mobile Homes	Imports	7,113	6,574	5,065	2,165	1,430	2,188
	Exports	11,291	7,250	7,750	3,666	2,427	8,163
Taps & Valves	Imports	277,804	315,427	269,199	322,207	334,356	339,013
	Exports	72,708	60,597	64,447	73,202	69,125	88,358
Pumps (circulating)	Imports	24,274	21,754	19,900	21,878	22,061	27,735
	Exports	27,131	27,964	23,603	32,078	22,154	12,655
Central Heating Boilers	Imports	493,841	547,726	566,588	554,452	572,298	523,778
	Exports	70,581	80,756	91,053	74,832	77,852	72,150
Radiators	Imports	197,513	184,218	175,518	189,792	178,677	173,172
	Exports	46,937	57,884	34,303	31,085	28,270	36,831
Water Heaters	Imports	88,897	105,755	105,711	84,627	90,676	87,999
	Exports	64,471	84,810	64,883	63,036	67,672	59,349
Space Heaters	Imports	107,581	110,403	114,047	136,729	148,616	100,179
	Exports	37,313	35,118	32,068	32,001	32,926	23,271
Fan Systems	Imports	198,750	161,772	127,327	172,161	190,441	178,384
	Exports	94,651	114,006	107,846	109,339	124,299	137,847
Air Conditioning Equipment	Imports	514,454	644,353	462,588	527,857	576,155	521,929
	Exports	231,144	268,134	240,594	270,112	262,557	254,516
Air Purifying Equipment	Imports	29,828	41,389	50,854	53,220	66,549	70,947
	Exports	120,706	138,002	102,158	148,638	183,241	192,262
Hand Driers	Imports	4,057	7,634	7,443	8,987	10,496	10,346
	Exports	1,648	1,017	1,247	1,905	1,950	1,759
Meters	Imports	24,502	24,155	24,237	28,701	44,041	62,079
	Exports	26,216	47,988	42,969	52,825	72,518	75,045
Plugs & Sockets	Imports	231,664	269,479	257,049	303,121	329,210	339,083
	Exports	148,672	153,173	137,529	182,364	214,654	216,827
Electrical Wires	Imports	1,303,905	1,236,486	909,830	1,213,470	1,346,886	1,381,293
	Exports	521,508	554,723	425,815	515,544	571,975	512,077
Electrical Insulators	Imports	30,477	34,957	29,102	30,596	26,548	33,792
	Exports	33,830	32,548	26,983	32,574	30,485	28,458
Lamps & Fittings	Imports	449,230	462,930	424,435	515,852	520,951	598,919
	Exports	221,180	236,971	223,741	216,816	266,980	287,310
Fire & Security Alarms	Imports	144,891	139,973	136,550	151,642	122,662	141,729
	Exports	154,520	182,447	238,608	208,281	173,480	182,177
Lifts & Escalators	Imports	118,401	129,307	115,017	96,973	102,832	117,522
	Exports	43,142	28,699	19,697	14,628	21,220	21,745

## EXTERNAL TRADE

Current Prices (£'000)

2012 Q3	Q4	2013 Q1	Q2	Q3	Products & Components (continued)	
19,989	20,189	20,189 (R)	19,714 (R)	21,284	Imports	Fitted Kitchens (assembled)
7,333	5,617	5,876 (R)	7,666 (R)	6,588	Exports	
10,500	5,951	9,280	14,908 (R)	9,500	Imports	Prefabricated Buildings (wood)
3,177	3,380	452 (R)	734	482	Exports	
8,223	3,541	10,494	8,625	11,768	Imports	Prefabricated Buildings (steel)
13,368	25,175	14,069 (R)	11,852 (R)	9,367	Exports	
7,868	5,111	5,078	7,436 (R)	11,209	Imports	Prefabricated Buildings (other)
4,009	6,632	2,836 (R)	10,834 (R)	5,733	Exports	
463	128	338	585	462	Imports	Mobile Homes
2,515	1,699	1,486	2,222	3,117	Exports	
91,768	76,749	91,459 (R)	88,102 (R)	96,256	Imports	Taps & Valves
20,075	25,837	19,886 (R)	24,716 (R)	21,855	Exports	
6,585	8,372	6,495	7,679	8,443	Imports	Pumps (circulating)
3,132	3,739	768 (R)	941 (R)	999	Exports	
122,877	166,841	147,308 (R)	135,139 (R)	149,122	Imports	Central Heating Boilers
17,060	22,227	16,930 (R)	16,463 (R)	18,090	Exports	
42,665	43,979	46,046	44,525 (R)	44,670	Imports	Radiators
8,904	9,234	8,615	10,198 (R)	7,233	Exports	
23,409	22,481	25,488	23,945 (R)	30,394	Imports	Water Heaters
13,390	13,237	14,712	15,753 (R)	17,945	Exports	
28,067	33,953	26,140	23,906 (R)	31,271	Imports	Space Heaters
5,532	8,299	4,398	4,469 (R)	5,788	Exports	
40,925	41,116	46,572 (R)	58,147 (R)	50,781	Imports	Fan Systems
35,022	34,017	30,391 (R)	35,317 (R)	39,696	Exports	
135,783	118,098	129,965 (R)	149,640 (R)	128,297	Imports	Air Conditioning Equipment
63,971	59,007	56,367 (R)	62,023 (R)	63,676	Exports	
15,936	17,651	15,059 (R)	16,681 (R)	17,940	Imports	Air Purifying Equipment
49,825	46,281	52,191 (R)	59,500 (R)	54,363	Exports	
2,562	2,564	2,637	3,106	1,843	Imports	Hand Driers
501	456	293	348 (R)	269	Exports	
14,600	16,677	13,838	12,240 (R)	13,137	Imports	Meters
15,180	17,705	17,443	22,231	19,921	Exports	
85,113	91,369	94,987 (R)	96,101 (R)	100,711	Imports	Plugs & Sockets
54,168	54,448	64,302 (R)	67,043 (R)	68,181	Exports	
336,764	318,301	341,956 (R)	380,743 (R)	371,672	Imports	Electrical Wires
120,783	124,920	138,242 (R)	133,123 (R)	141,209	Exports	
9,167	7,537	6,641 (R)	8,847 (R)	7,304	Imports	Electrical Insulators
7,677	6,827	6,017 (R)	7,469 (R)	6,266	Exports	
156,600	160,032	165,255 (R)	164,014 (R)	189,612	Imports	Lamps & Fittings
72,452	77,604	65,951 (R)	69,828 (R)	71,100	Exports	
35,159	38,174	38,257 (R)	41,917 (R)	43,130	Imports	Fire & Security Alarms
47,455	46,091	48,053 (R)	45,081 (R)	48,791	Exports	
33,090	29,999	26,239	27,410 (R)	27,667	Imports	Lifts & Escalators
7,858	4,272	3,147	16,544	4,070	Exports	

© Crown copyright 2014

Published under licence from the Controller of Her Majesty's Stationery Office.

Applications for reproductions should be made in writing to :-

The Copyright Unit, Her Majesty's Stationery Office, St. Clements House,  
2-16 Colegate, Norwich NR3 1BQ

February 2014

URN BIS / 14 / 313b

ISSN 0264-6188