



Ministry of
JUSTICE

**Population in custody
monthly tables
May 2009
England and Wales**

Ministry of Justice
Statistics bulletin

Published 30 June 2009

Population in custody May 2009 - Key points

Population in custody

- The population in custody on 31 May 2009 was 83,300, a rise of 450 from a year earlier. The population in prisons was 82,900 (a rise of 480 from a year earlier), in Secure Training Centres (STCs) it was 240 and in Secure Children's Homes (SCHs) it was 170.

Population in prison

- The male prison population increased by 1 per cent (up 650) to 78,600 and the female prison population decreased 4 per cent (down 170) to 4,300 in May 2009 compared to May 2008.
- The remand population in prison increased 2 per cent from 13,000 in May 2008 to 13,300 in May 2009 (up 270). Within this total, the untried population increased 5 per cent (up 410) to 8,800 and the convicted unsentenced population went down 3 per cent (down 140), to 4,400.
- Amongst the remand population the changes since May 2008 by offence group were all less than 100 apart from violence against the person offences which increased by 7 per cent (up 230).
- There were 67,900 sentenced⁽¹⁾ prisoners at 31 May 2009, up 210 from a year earlier. There were increases for those serving indeterminate sentences (Life sentences and Indeterminate sentences for Public Protection) which increased by 11 per cent (up 1,200) and for those serving sentences of 1 year to less than 4 years which increased by 1 per cent (up 170). There were falls for those serving a sentence of less than or equal to 6 months (down 650, 12 per cent), and greater than 6 and less than 12 months (down 380, 13 per cent). The falls for sentences of less than 12 months were against a relatively high short-sentenced population a year ago.
- Amongst the sentenced⁽¹⁾ prison population the largest increases were for violence against the person (up 960, 5 per cent), robbery (up 280, 5 per cent) and sexual offences (up 330, 4 per cent) from May 2008. The largest decreases since May 2008 were in those serving sentences for motoring offences (down 180, 14 per cent), theft and handling (down 410, 11 per cent), other offences (down 540, 8 per cent) and drugs (down 240, 2 per cent).
- The adult population in prison was 71,200 at 31 May 2009, an increase of 1 per cent (up 910) from a year earlier. Over the same time period the number of 15 to 17 year olds fell 15 per cent (down 360) to 2,100 and the young adult prison population fell 1 per cent (down 60) to 9,600 at 31 May 2009.
- The prison population was 111 per cent of the 'In Use CNA' (74,700) at 31 May 2009.

(1) Includes recalls and excludes fine defaulters

Figure A: Remand population by offence group

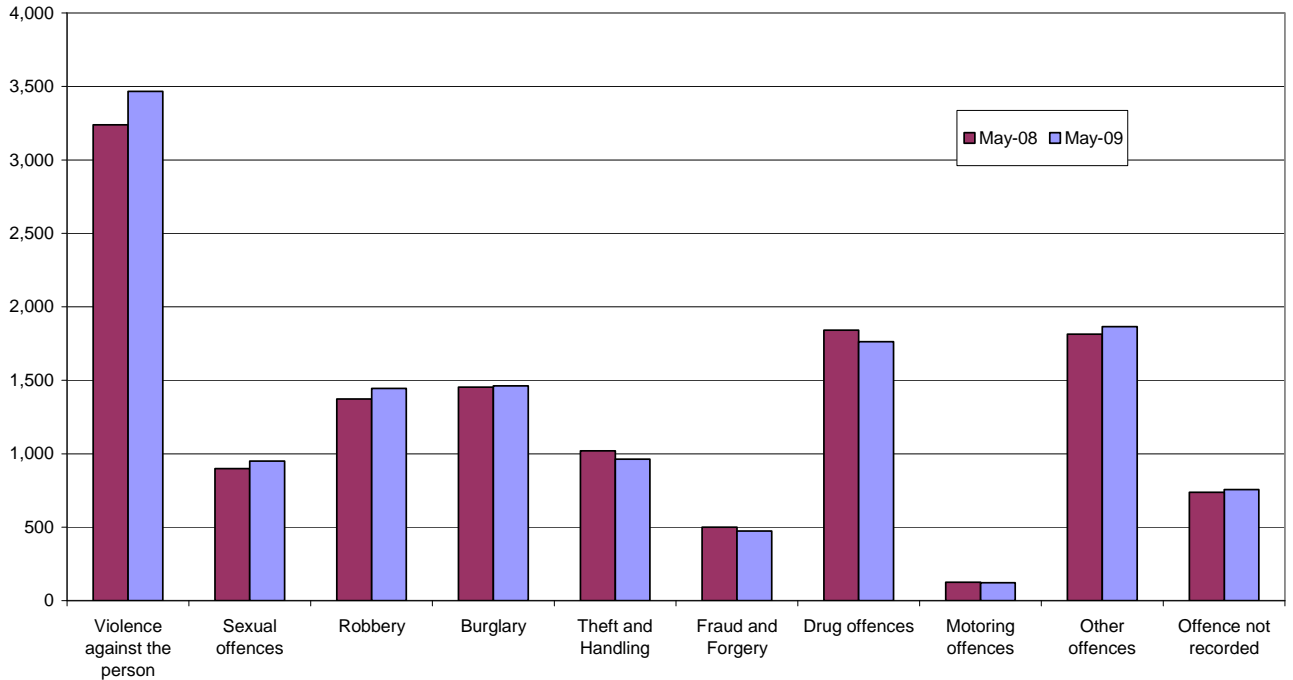
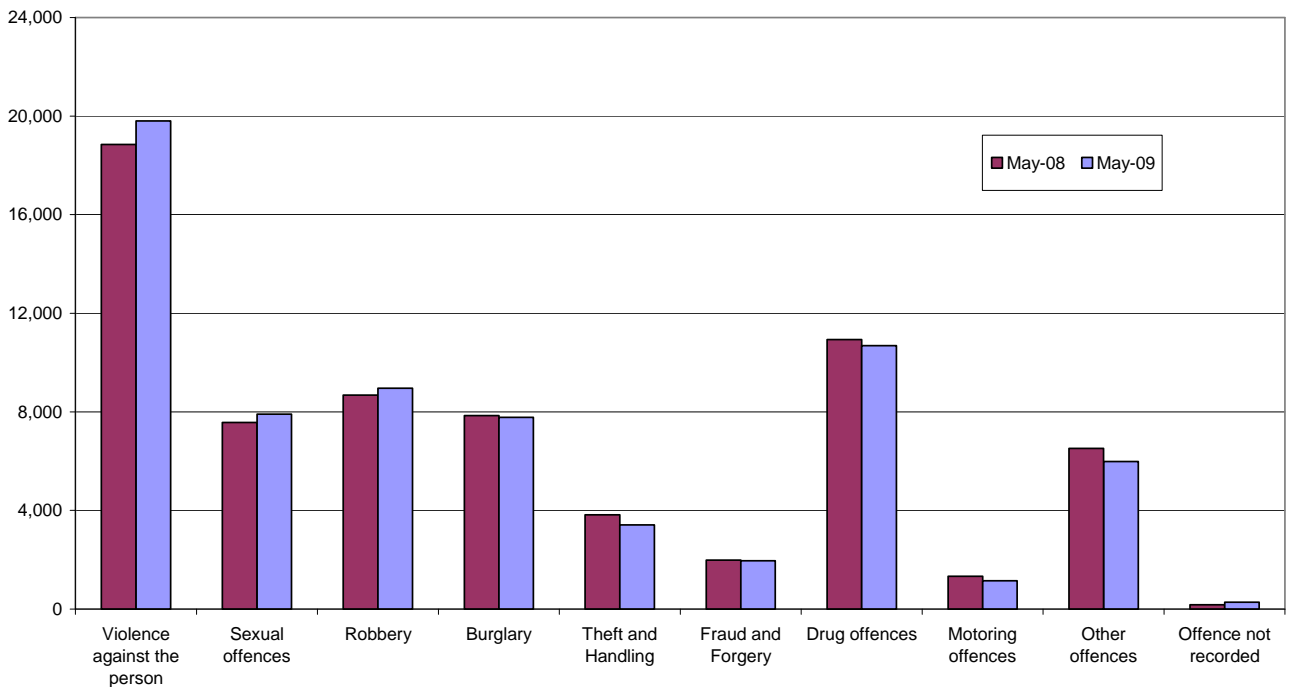


Figure B: Immediate custodial sentenced population by offence group



Notes

Data sources and quality

The data presented in this brief are drawn from the prison administrative IT systems. Although care is taken when processing and analysing the returns, the detail collected is subject to the inaccuracies inherent in any large-scale recording system. While the figures shown have been checked as far as practicable, they should be regarded as approximate and not necessarily accurate to the last whole number shown in the tables. They are fit to be used for purposes of looking at trends and for comparing the relative magnitude of components.

The prison population information has been drawn from two prison sources. The first source is the routine provision by prison establishments of records of the numbers of persons held in custody at the end of each month, broadly subdivided according to age, sex, custody type and sentence length. The records are collated and processed centrally, to produce the main estimates of the end of month population presented. The second source is the electronically held details for individual inmates such as date of birth, sex, religion, ethnic origin, custody type, offence, and reception and discharge dates and, for sentenced prisoners, sentence length. These data are collected on a central computer database and are used to produce the analyses by offence group and individual year of age. They form the basis of detailed population breakdowns, supplementing the aggregates derived from the first source, to which they are scaled for consistency. A new more detailed method of scaling this information was developed in 2004.

Because the detailed population breakdowns have been scaled and also rounded to the nearest whole number, individual components may not sum to the totals.

Unless otherwise stated, numbers in the text have been rounded for ease of reading using the following rules:

Numbers of 100,000 and over are rounded to the nearest 1,000

Numbers from 1,000 – 99,999 are rounded to the nearest 100

Numbers from 10 – 999 are rounded to the nearest 10

Numbers under 10 are unrounded.

Information on the population in STCs and SCHs has been supplied by the Youth Justice Board.

All figures are provisional pending publication of the annual Offender Management Caseload Statistics.

Definitions

Population in custody - this includes those held in prison establishments, police cells under Operation Safeguard, secure training centres (STCs) and secure children's homes (SCHs). This is a change to previous outputs (notably Prison Population Monthly Brief and Prison Statistics England and Wales) where the reference to 'population in custody' just covered those held in prison establishments and police cells. All coverage is for England and Wales.

Population in prison – this includes those held in prisons in England and Wales, including the three removal centres of Dover, Haslar and Lindholme.

Sentenced population – this includes those sentenced to an immediate custodial sentence and fine defaulters.

Immediate custodial sentence – this does not include fine defaulters.

Adult prisoners – these are prisoners aged 21 years and over.

Young adults – these are prisoners aged 18 to 20, but including 21 year old prisoners who were aged 20 or under at conviction who have not been reclassified as part of the adult population

Indeterminate sentences – these cover life sentences and indeterminate sentences for public protection (IPP).

Contact points for further information

Current and previous editions of this publication are available for download at www.justice.gov.uk/publications/populationincustody.htm. Future reports will be published on a monthly basis. Spreadsheet files of the tables contained in this document are also available for download from this address.

Press enquiries should be directed to the Ministry of Justice press office:

Tel: 020 3334 3536

Other enquiries about these statistics should be directed to:

Ministry of Justice
Offender Management and Sentencing – Analytical Services
2nd Floor Fry Building
2 Marsham Street
London
SW1P 4DF
Tel: 020 7035 3470

General enquiries about the statistical work of the Ministry of Justice can be e-mailed to: statistics.enquiries@justice.gsi.gov.uk

General information about the official statistics system of the UK is available from www.statistics.gov.uk

Table 1: Population in custody: by type of custody and sex

	May-08			May-09			Percentage change 2008 to 2009		
	Males	Females	Total	Males	Females	Total	Males	Females	Total
All population in custody, of which	78,230	4,592	82,822	78,888	4,382	83,270	1	-5	1
Prisons	77,926	4,446	82,372	78,575	4,281	82,856	1	-4	1
Police cells	0	0	0	0	0	0	*	*	*
SCHs	163	53	216	137	33	170	-16	*	-21
STCs	141	93	234	176	68	244	25	-27	4
All population in prison, of which	77,926	4,446	82,372	78,575	4,281	82,856	1	-4	1
Remand	12,154	845	12,999	12,483	784	13,267	3	-7	2
Untried	7,884	553	8,437	8,313	531	8,844	5	-4	5
Convicted unsentenced	4,270	292	4,562	4,170	253	4,423	-2	-13	-3
Under sentence	64,312	3,490	67,802	64,600	3,445	68,045	0	-1	0
Fine defaulter	79	6	85	104	10	114	32	*	34
Less than or equal to 6 months	5,113	510	5,623	4,524	442	4,966	-12	-13	-12
Greater than 6 months to less than 12 months	2,609	250	2,859	2,259	217	2,476	-13	-13	-13
12 months to less than 4 years	22,229	1,305	23,534	22,347	1,356	23,703	1	4	1
4 years or more (excluding Indeterminate sentences)	23,390	1,075	24,465	23,309	1,046	24,355	0	-3	0
Indeterminate sentences	10,892	344	11,236	12,057	374	12,431	11	9	11
Non-criminal prisoners	1,460	111	1,571	1,492	52	1,544	2	-53	-2
All adult population in prison, of which	66,357	3,961	70,318	67,384	3,839	71,223	2	-3	1
Remand	9,700	745	10,445	10,006	657	10,663	3	-12	2
Untried	6,360	486	6,846	6,678	449	7,127	5	-8	4
Convicted unsentenced	3,340	259	3,599	3,328	208	3,536	0	-20	-2
Under sentence	55,327	3,115	58,442	56,001	3,133	59,134	1	1	1
Fine defaulter	74	6	80	103	10	113	39	*	41
Less than or equal to 6 months	3,840	428	4,268	3,504	384	3,888	-9	-10	-9
Greater than 6 months to less than 12 months	1,918	223	2,142	1,700	190	1,890	-11	-15	-12
12 months to less than 4 years	17,676	1,135	18,811	17,866	1,202	19,068	1	6	1
4 years or more (excluding Indeterminate sentences)	21,759	1,001	22,760	21,486	992	22,478	-1	-1	-1
Indeterminate sentences	10,060	322	10,382	11,342	355	11,697	13	10	13
Non-criminal prisoners	1,330	101	1,431	1,377	49	1,426	4	*	0
All 15 -17 year olds in prison, of which	2,362	69	2,432	2,017	58	2,075	-15	-16	-15
Remand	522	13	535	529	15	543	1	*	2
Untried	341	9	350	369	12	381	8	*	9
Convicted unsentenced	181	4	185	159	3	162	-12	*	-12
Under sentence	1,837	56	1,894	1,486	44	1,530	-19	*	-19
Fine defaulter	0	0	0	0	0	0	*	*	*
Less than or equal to 6 months	457	17	474	318	12	330	-30	*	-30
Greater than 6 months to less than 12 months	269	7	276	199	5	204	-26	*	-26
12 months to less than 4 years	885	24	909	751	16	767	-15	*	-16
4 years or more (excluding Indeterminate sentences)	147	8	155	153	6	159	4	*	2
Indeterminate sentences	79	0	79	65	6	70	-18	*	-11
Non-criminal prisoners	3	0	3	2	0	2	*	*	*
All young adults¹ in prison, of which	9,207	416	9,622	9,174	384	9,558	0	-8	-1
Remand	1,932	87	2,019	1,948	112	2,061	1	29	2
Untried	1,183	58	1,241	1,266	70	1,336	7	21	8
Convicted unsentenced	749	29	778	683	42	725	-9	*	-7
Under sentence	7,148	319	7,466	7,113	268	7,381	0	-16	-1
Fine defaulter	5	0	5	1	0	1	*	*	*
Less than or equal to 6 months	817	65	882	702	47	749	-14	*	-15
Greater than 6 months to less than 12 months	422	19	441	360	22	382	-15	*	-13
12 months to less than 4 years	3,668	146	3,814	3,730	138	3,868	2	-6	1
4 years or more (excluding Indeterminate sentences)	1,484	66	1,550	1,670	48	1,718	13	*	11
Indeterminate sentences	753	22	775	650	14	664	-14	*	-14
Non-criminal prisoners	127	10	137	113	3	116	-11	*	-15

¹ Young adults are those aged 18 - 20 and those 21 year olds who were aged 20 or under at conviction who have not been reclassified as part of the adult population

* Indicates that one or both of the comparative numbers are less than 50 which could give rise to misleading percentage changes

Data Sources and Quality

These figures have been drawn from administrative IT systems which, as with any large scale recording system, are subject to possible errors with data entry and processing. See Data Sources and Quality section of report for more information.

Table 2: Population in prison by offence - remand and immediate custodial sentence

	May-08		May-09		Percentage change 2008 to 2009	
	Remand	Immediate custodial sentence	Remand	Immediate custodial sentence	Remand	Immediate custodial sentence
All prisoners	12,999	67,717	13,267	67,931	2	0
Violence against the person	3,239	18,850	3,467	19,809	7	5
Sexual offences	899	7,573	950	7,907	6	4
Robbery	1,372	8,682	1,446	8,960	5	3
Burglary	1,454	7,850	1,462	7,782	1	-1
Theft and Handling	1,020	3,818	963	3,409	-6	-11
Fraud and Forgery	500	1,990	473	1,966	-5	-1
Drug offences	1,841	10,933	1,763	10,689	-4	-2
Motoring offences	125	1,331	123	1,150	-2	-14
Other offences	1,813	6,521	1,864	5,979	3	-8
Offence not recorded	737	170	756	281	3	65
All male prisoners	12,154	64,233	12,483	64,496	3	0
Violence against the person	3,074	18,084	3,289	18,953	7	5
Sexual offences	892	7,525	936	7,855	5	4
Robbery	1,313	8,386	1,381	8,618	5	3
Burglary	1,403	7,655	1,426	7,573	2	-1
Theft and Handling	909	3,355	868	3,019	-5	-10
Fraud and Forgery	405	1,719	403	1,686	0	-2
Drug offences	1,718	9,932	1,654	9,789	-4	-1
Motoring offences	123	1,312	119	1,122	-3	-14
Other offences	1,660	6,107	1,729	5,618	4	-8
Offence not recorded	656	158	677	264	3	67
All female prisoners	845	3,484	784	3,435	-7	-1
Violence against the person	165	766	178	856	8	12
Sexual offences	7	47	14	52	*	*
Robbery	59	297	65	343	10	16
Burglary	51	195	36	210	*	8
Theft and Handling	111	463	95	389	-14	-16
Fraud and Forgery	94	270	69	280	-26	4
Drug offences	123	1,001	109	900	-12	-10
Motoring offences	2	19	4	27	*	*
Other offences	153	414	135	361	-12	-13
Offence not recorded	81	12	80	17	-1	*

Table 2: Population in prison by offence - remand and immediate custodial sentence

	May-08		May-09		Percentage change 2008 to 2009	
	Remand	Immediate custodial sentence	Remand	Immediate custodial sentence	Remand	Immediate custodial sentence
All adult prisoners	10,445	58,362	10,663	59,021	2	1
Violence against the person	2,518	16,146	2,729	17,188	8	6
Sexual offences	794	7,145	819	7,484	3	5
Robbery	857	6,488	894	6,743	4	4
Burglary	1,119	6,630	1,116	6,533	0	-1
Theft and Handling	849	3,275	781	2,969	-8	-9
Fraud and Forgery	467	1,945	449	1,911	-4	-2
Drug offences	1,603	10,033	1,546	9,872	-4	-2
Motoring offences	101	1,133	100	1,024	-1	-10
Other offences	1,498	5,435	1,547	5,057	3	-7
Offence not recorded	642	132	682	239	6	81
All adult male prisoners	9,700	55,253	10,006	55,898	3	1
Violence against the person	2,377	15,507	2,590	16,461	9	6
Sexual offences	788	7,098	807	7,434	2	5
Robbery	809	6,255	843	6,466	4	3
Burglary	1,072	6,455	1,088	6,341	1	-2
Theft and Handling	754	2,841	702	2,603	-7	-8
Fraud and Forgery	376	1,681	385	1,635	2	-3
Drug offences	1,493	9,099	1,450	9,017	-3	-1
Motoring offences	99	1,118	96	998	-2	-11
Other offences	1,366	5,075	1,438	4,721	5	-7
Offence not recorded	566	123	606	222	7	81
All adult female prisoners	745	3,109	657	3,123	-12	0
Violence against the person	141	638	140	727	-1	14
Sexual offences	6	47	12	50	*	*
Robbery	48	233	50	277	*	19
Burglary	46	175	28	192	*	10
Theft and Handling	95	434	78	366	-18	-16
Fraud and Forgery	90	264	64	276	-29	5
Drug offences	110	934	95	855	-13	-8
Motoring offences	2	16	4	26	*	*
Other offences	132	360	110	336	-17	-7
Offence not recorded	76	10	75	17	0	*

Table 2: Population in prison by offence - remand and immediate custodial sentence

	May-08		May-09		Percentage change 2008 to 2009	
	Remand	Immediate custodial sentence	Remand	Immediate custodial sentence	Remand	Immediate custodial sentence
All aged 15-17	535	1,894	543	1,530	2	-19
Violence against the person	167	494	156	389	-7	-21
Sexual offences	35	76	25	75	*	-1
Robbery	135	502	156	427	16	-15
Burglary	68	296	77	261	13	-12
Theft and Handling	25	162	26	120	*	-26
Fraud and Forgery	2	6	1	3	*	*
Drug offences	35	103	37	82	*	-20
Motoring offences	3	25	5	14	*	*
Other offences	57	225	58	156	2	-31
Offence not recorded	7	5	2	4	*	*
All males aged 15-17	522	1,837	529	1,486	1	-19
Violence against the person	166	476	150	373	-10	-22
Sexual offences	35	76	25	74	*	-3
Robbery	133	489	155	414	17	-15
Burglary	67	292	77	258	15	-12
Theft and Handling	22	156	25	116	*	-26
Fraud and Forgery	2	6	0	3	*	*
Drug offences	34	100	37	79	*	-21
Motoring offences	3	25	5	14	*	*
Other offences	53	214	53	152	0	-29
Offence not recorded	6	4	2	4	*	*
All females aged 15-17	13	56	15	44	*	*
Violence against the person	1	18	6	16	*	*
Sexual offences	0	0	0	1	*	*
Robbery	2	13	1	12	*	*
Burglary	1	4	0	3	*	*
Theft and Handling	3	6	1	4	*	*
Fraud and Forgery	0	0	1	0	*	*
Drug offences	1	3	0	3	*	*
Motoring offences	0	0	0	0	*	*
Other offences	4	12	5	5	*	*
Offence not recorded	1	1	0	0	*	*

Table 2: Population in prison by offence - remand and immediate custodial sentence

	May-08		May-09		Percentage change 2008 to 2009	
	Remand	Immediate custodial sentence	Remand	Immediate custodial sentence	Remand	Immediate custodial sentence
All young adults¹	2,019	7,461	2,061	7,380	2	-1
Violence against the person	554	2,210	582	2,232	5	1
Sexual offences	70	351	106	347	50	-1
Robbery	381	1,692	396	1,791	4	6
Burglary	268	925	269	988	1	7
Theft and Handling	145	381	156	320	7	-16
Fraud and Forgery	31	39	23	52	*	*
Drug offences	203	798	180	735	-11	-8
Motoring offences	21	173	17	111	*	-35
Other offences	259	861	259	766	0	-11
Offence not recorded	88	32	73	38	-17	*
All male young adults¹	1,932	7,143	1,948	7,112	1	0
Violence against the person	531	2,100	550	2,119	4	1
Sexual offences	69	351	104	347	49	-1
Robbery	372	1,641	383	1,737	3	6
Burglary	264	908	262	973	-1	7
Theft and Handling	133	357	141	300	6	-16
Fraud and Forgery	27	32	18	48	*	*
Drug offences	191	733	167	693	-12	-5
Motoring offences	21	169	17	110	*	-35
Other offences	241	818	238	746	-1	-9
Offence not recorded	84	32	69	38	-18	*
All female young adults¹	87	319	112	268	29	-16
Violence against the person	23	109	32	113	*	3
Sexual offences	1	0	2	0	*	*
Robbery	9	51	13	54	*	6
Burglary	4	16	7	15	*	*
Theft and Handling	12	24	15	20	*	*
Fraud and Forgery	4	7	4	4	*	*
Drug offences	12	65	13	42	*	*
Motoring offences	0	4	0	1	*	*
Other offences	17	43	20	20	*	*
Offence not recorded	4	1	4	0	*	*

¹ Young adults are those aged 18 - 20 and those 21 year olds who were aged 20 or under at conviction who have not been reclassified as part of the adult population

* Indicates that one or both of the comparative numbers are less than 50 which could give rise to misleading percentage changes

May 2009 and May 2008 data are not directly comparable because some improvements have been made to the way offences are grouped which has resulted in small changes to some offence groups

Data Sources and Quality

These figures have been drawn from administrative IT systems which, as with any large scale recording system, are subject to possible errors with data entry and processing. See Data Sources and Quality section of report for more information.

Table 3: Young population in prison: by type of custody and sex
31 May 2009

	15	16	17	Total Under 18	18	19	20	21	Total Young Adults ¹
All young population in prisons, of which									
<i>Prisoners on remand</i>	53	141	350	543	658	696	625	82	2,061
Untried	46	94	241	381	430	454	388	64	1,336
Convicted unsentenced	7	47	109	162	228	243	237	18	725
<i>Prisoners under sentence</i>	147	434	949	1,530	1,500	2,360	2,805	716	7,381
Fine defaulter	0	0	0	0	0	1	0	0	1
Immediate custodial sentence	147	434	949	1,530	1,500	2,359	2,805	716	7,380
<i>Non-criminal prisoners</i>	1	0	1	2	31	33	29	23	116
All young male population in prisons, of which									
<i>Prisoners on remand</i>	53	141	335	529	623	670	576	80	1,948
Untried	46	94	229	369	407	438	359	63	1,266
Convicted unsentenced	7	47	106	159	216	233	217	17	683
<i>Prisoners under sentence</i>	147	434	905	1,486	1,445	2,255	2,709	704	7,113
Fine defaulter	0	0	0	0	0	1	0	0	1
Immediate custodial sentence	147	434	905	1,486	1,445	2,254	2,709	704	7,112
<i>Non-criminal prisoners</i>	1	0	1	2	29	33	28	23	113
All young female population in prisons, of which									
<i>Prisoners on remand</i>	0	0	15	15	35	26	49	2	112
Untried	0	0	12	12	23	16	30	1	70
Convicted unsentenced	0	0	3	3	12	10	20	1	42
<i>Prisoners under sentence</i>	0	0	44	44	55	105	96	12	268
Fine defaulter	0	0	0	0	0	0	0	0	0
Immediate custodial sentence	0	0	44	44	55	105	96	12	268
<i>Non-criminal prisoners</i>	0	0	0	0	2	0	1	0	3

¹ Young adults are those aged 18 - 20 and those 21 year olds who were aged 20 or under at conviction who have not been reclassified as part of the adult population

These figures have been drawn from administrative IT systems, which, as with any large scale recording system, are subject to possible errors with data entry and processing. See Data Sources and Quality section of report for more information.

Table 4: CNA and population by sex and establishment

31 May 2009

Establishment	In use CNA¹	Total Population
Males		
Acklington	946	936
Albany	567	557
Altcourse	794	1,316
Ashfield	400	344
Ashwell	184	203
Aylesbury	437	438
Bedford	321	432
Belmarsh	800	858
Birmingham	1,109	1,420
Blantyre House	122	116
Blundeston	481	525
Brinsford	545	536
Bristol	424	587
Brixton	606	736
Buckley Hall	346	378
Bullingdon	879	1,037
Bullwood Hall	180	225
Camp Hill	520	565
Canterbury	195	307
Cardiff	548	789
Castington	400	353
Channings Wood	696	718
Chelmsford	554	676
Coldingley	494	507
Cookham Wood	114	79
Dartmoor	613	632
Deerbolt	513	439
Doncaster	771	1,110
Dorchester	137	216
Dovegate	800	843
Dover	316	309
Durham	593	942
Edmunds Hill	361	365
Elmley	735	944
Erlestoke	470	467
Everthorpe	603	682
Exeter	315	529
Featherstone	663	682
Feltham	762	634
Ford	557	535
Forest Bank	800	1,133
Frankland	733	734
Full Sutton	592	575
Garth	812	815
Gartree	683	683
Glen Parva	668	792
Gloucester	225	296
Grendon/Spring Hill	533	506
Guys Marsh	520	569
Haslar	160	153
Haverigg	622	614
Hewell1	1,173	1,413
High Down	999	1,036
Highpoint	906	932
Hindley	515	255
Hollesley Bay	345	342
Holme House	857	960
Hull	723	1,003
Huntercombe	360	270
Kennet	175	339
Kingston (Portsmouth)	175	175
Kirkham	590	583
Kirklevington Grange	283	267
Lancaster Castle	159	230
Lancaster Farms	480	509
Latchmere House	207	199

Table 4: CNA and population by sex and establishment

31 May 2009

Establishment	In use CNA¹	Total Population
Leeds	829	1,113
Leicester	210	347
Lewes	623	681
Leyhill	512	472
Lincoln	436	658
Lindholme	1,054	1,123
Littlehey	663	713
Liverpool	1,166	1,323
Long Lartin	458	439
Lowdham Grange	640	687
Maidstone	565	576
Manchester	966	1,228
Moorland Open	260	249
Moorland Closed	740	765
North Sea Camp	318	297
Northallerton	147	223
Norwich	447	460
Nottingham	379	535
Onley	710	700
Parc	838	1,195
Parkhurst	457	492
Pentonville	813	1,096
Peterborough	480	608
Portland	579	598
Preston	453	750
Ranby	945	1,065
Reading	190	234
Risley	1,048	1,021
Rochester	620	605
Rye Hill	600	657
Shepton Mallet	165	186
Shrewsbury	177	301
Stafford	741	730
Standford Hill	462	458
Stocken	779	791
Stoke Heath	562	558
Sudbury	581	577
Swaleside	808	826
Swansea	230	401
Swinfen Hall	604	612
The Mount	747	770
The Verne	572	591
The Wolds	320	385
Thorn Cross	322	290
Usk/Prescoed	320	426
Wakefield	752	735
Wandsworth	1,107	1,644
Warren Hill	222	187
Wayland	955	1,003
Wealstun	505	517
Wellingborough	632	630
Werrington	160	147
Wetherby	408	360
Whatton	776	838
Whitemoor	464	448
Winchester	499	685
Woodhill	641	846
Wormwood Scrubs	1,176	1,245
Wymott	1,081	1,128
TOTAL	70,080	78,575

Table 4: CNA and population by sex and establishment

31 May 2009

Establishment	In use CNA¹	Total Population
Females		
Askham Grange	126	118
Bronzefield	450	428
Downview	358	354
Drake Hall	315	261
East Sutton Park	98	91
Eastwood Park	326	311
Foston Hall	264	219
Holloway	500	411
Low Newton	298	293
Morton Hall	392	356
New Hall	393	373
Peterborough	360	356
Send	282	278
Styal	448	432
TOTAL	4,610	4,281
Male and female establishment total	74,690	82,856
Police cells total	*	0
Establishment and police cell total	74,690	82,856

¹ In Use CNA - Certified Normal Accommodation that is available for immediate use, excludes damaged cells, cells affected by building works and cells taken out of use due to staff shortages

² HMP Hewell was created by an amalgamation of the three former prisons, Blakenhurst, Brockhill and Hewell Grange on 25 June 2008

* On 31st May 2009 up to 400 police cells available under operation safeguard which are not included in the CNA figure

Data Sources and Quality

These figures have been drawn from administrative IT systems which, as with any large scale recording system, are subject to possible errors with data entry and processing. See Data Sources and Quality section of report for more information.

