



Ministry of
JUSTICE

Youth Crime: Young people aged 10-17 receiving their first reprimand, warning or conviction, 2000-01 to 2009-10

Ministry of Justice
Statistics bulletin

Published 14 October 2010

Youth Crime: Young people aged 10-17 receiving their first reprimand, warning or conviction, 2000-01 to 2009-10

Introduction

This bulletin provides information on the number and rate of young people aged 10-17 receiving their first reprimand, warning or conviction, 2000-01 to 2009-10. It is based on data recorded on the Police National Computer (PNC). Further information on how the data have been aggregated can be found in the notes at the end of this bulletin.

These figures update those found in the publication entitled "Youth Crime: Young people aged 10-17 receiving their first reprimand, warning or conviction, in England, 2000-01 to 2008-09" released on 26th November 2009 by the former Department for Children, Schools, and Families and the subsequent six-monthly release on 10th June 2010 by the Department for Education. The Ministry of Justice has now taken responsibility for publishing these figures.

There are two main series of data presented in this document. The primary series covers young people aged 10-17 receiving their first reprimand, warning or conviction by area of residence, 2000-01 to 2009-10. The secondary series covers young people aged 10-17 receiving their first Penalty Notice for Disorder (PND), reprimand, warning or conviction by area of residence, 2004-05 to 2009-10. This publication also includes some breakdowns by age, gender, outcome and offence type and well as a breakdown by local area.

PNDs were introduced for use with 16-17 year olds in January 2004 and are included in some other published crime statistics. They have been provided here to aid interpretation since some offences which may have formerly have attracted a reprimand, warning or conviction could now be handled using PNDs.

Within this document the term *first time young offenders* has been used occasionally to refer to young people aged 10-17 receiving their first reprimand, warning or conviction (including PNDs only where specified), for the sake of brevity.

Key Points

The rate of young people aged 10-17 receiving their first reprimand, warning or conviction per 100,000 10-17 year old population, living in England fell to 1,160 in 2009-10, a decrease of 22% from the rate of 1,480 per 100,000 in 2008-09. However, there had previously been an increase from 1,510 in 2002-03 to a peak of 2,040 in 2006-07. The majority of the rise and fall of these figures over the period 2001-02 to 2009-10 is related to the use of out of court disposals (i.e. reprimands and warnings).

The number of young people aged 10-17 receiving their first reprimand, warning or conviction, living in England, currently stands at 57,291 for 2009-10, a decrease of 23% from 74,588 young people in 2008-09.

Penalty Notices for Disorder

The trends in the statistics including and excluding PNDs are very similar. The rate of young people aged 10-17 receiving their first PND, reprimand, warning or conviction per 100,000 10-17 year old population, living in England, increased from 1,780 in 2004-05 to 2,180 in 2006-07. However, in the last three years there has been a fall in this rate to 1,220 per 100,000 in 2009-10 – a decrease of 23% in the last year (from 1,590 in 2008-09).

The number of young people aged 10-17 receiving their first PND, reprimand, warning or conviction in England currently stands at 60,436 for 2009-10. This is a decrease of 24% from 79,789 young people in 2008-09. The decreases in the last year of the series including PNDs are very similar to the decreases in the series which excludes PNDs.

CHARTS

- Chart 1 Rate of young people aged 10-17 receiving their first reprimand, warning or conviction (including and excluding PNDs) per 100,000 10-17 year old population, living in England, 2000-01 to 2009-10
- Chart 2 Number of young people aged 10-17 receiving their first reprimand, warning or conviction (including and excluding PNDs) living in England, 2000-01 to 2009-10
- Chart 3 Rate of young people aged 10-17 receiving their first reprimand, warning or conviction per 100,000 10-17 year old population, living in England or Wales by region, 2009-10
- Chart 4 Percentage change between 2008-09 and 2009-10 in the rate of young people aged 10-17 receiving their first reprimand, warning or conviction per 100,000 10-17 year old population, living in England or Wales by region
- Chart 5 Number of young people aged 10-17 receiving their first reprimand, warning or conviction, processed by English or Welsh police forces, split by gender, 2000-01 to 2009-10
- Chart 6 Number of young people aged 10-17 receiving their first reprimand, warning or conviction, processed by English or Welsh police forces, split by age group, 2000-01 to 2009-10
- Chart 7 Number of young people aged 10-17 receiving their first reprimand, warning or conviction, processed by English or Welsh police forces, split by outcome, 2000-01 to 2009-10
- Chart 8 Number of young people aged 10-17 receiving their first reprimand, warning or conviction, processed by English or Welsh police forces, split by offence class, 2000-01 to 2009-10

TABLES

- Table 1 Number of young people aged 10-17 receiving their first reprimand, warning or conviction (including and excluding PNDs), 2000-01 to 2009-10
- Table 2 Number of young people aged 10-17 receiving their first reprimand, warning or conviction, processed by English or Welsh police forces, split by outcome and sentence, 2000-01 to 2009-10
- Table 3 Number of young people aged 10-17 receiving their first reprimand, warning or conviction by Local Authority of residence, 2000-01 to 2009-10
- Table 4 Rates of young people aged 10-17 receiving their first reprimand, warning or conviction per 100,000 10-17 year old population by Local Authority of residence, 2000-01 to 2009-10
- Table 5 Number of young people aged 10-17 receiving their first reprimand, warning or conviction by YOT of residence for YOTs non-coterminous with local authorities, 2000-01 to 2009-10
- Table 6 Rates of young people aged 10-17 receiving their first reprimand, warning or conviction per 100,000 10-17 year old population by YOT of residence for YOTs non-coterminous with local authorities, 2000-01 to 2009-10
- Table 7 Number of young people aged 10-17 receiving their first reprimand, warning or conviction by processing Police Force Areas, 2000-01 to 2009-10
- Table 8 Rates of young people aged 10-17 receiving their first reprimand, warning or conviction per 100,000 10-17 year old population by processing Police Force Areas, 2000-01 to 2009-10

Chart 1 Rate of young people aged 10-17 receiving their first reprimand, warning or conviction (including and excluding PNDs) per 100,000 10-17 year old population, living in England, 2000-01 to 2009-10

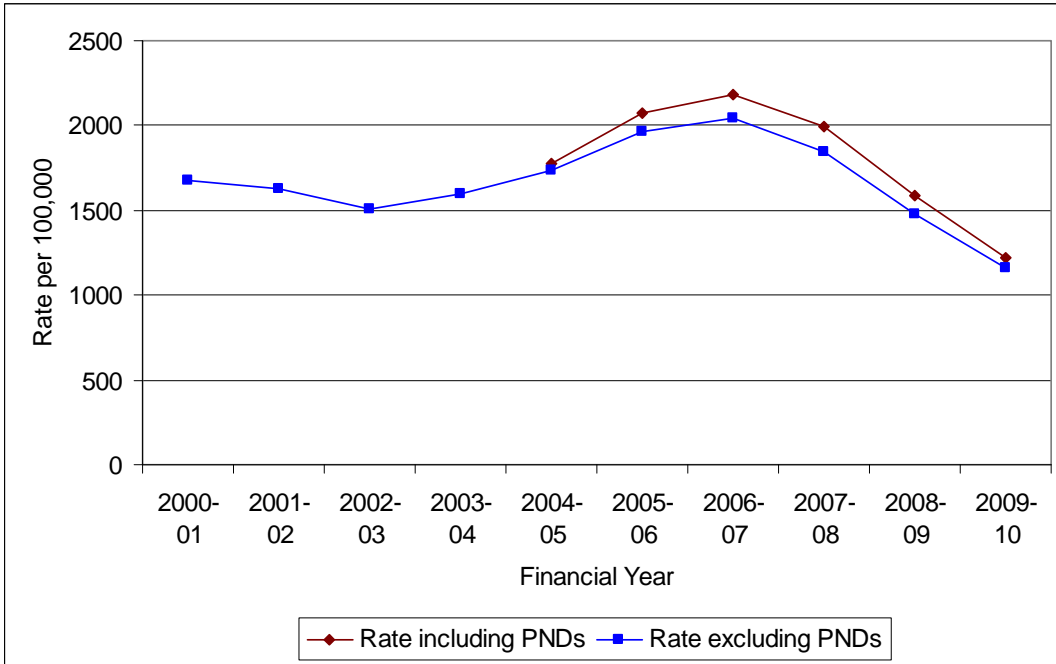
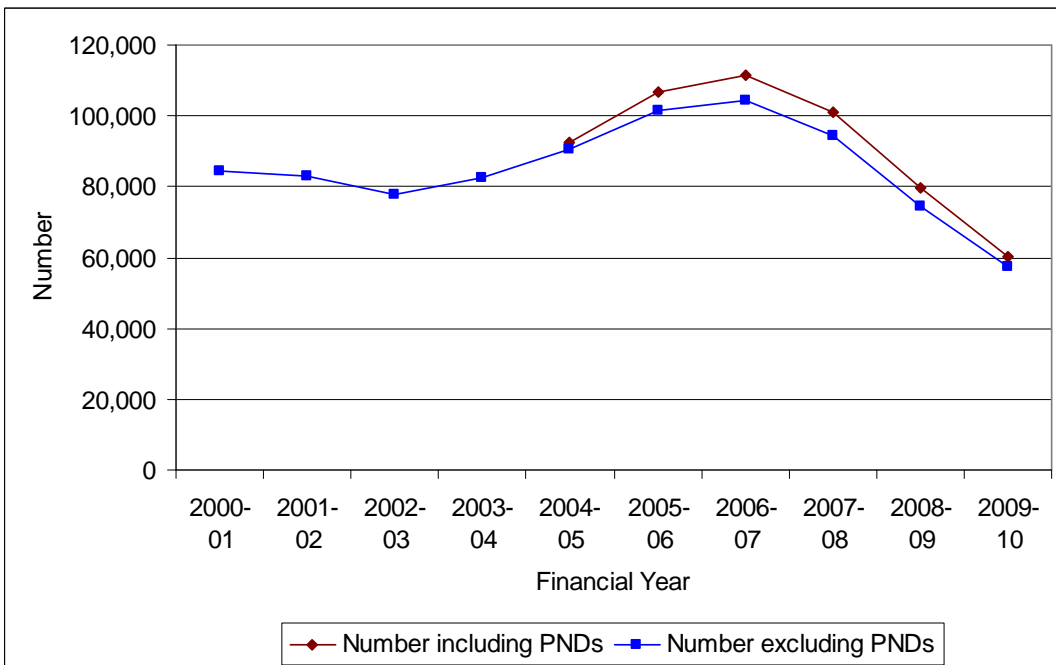


Chart 2 Number of young people aged 10-17 receiving their first reprimand, warning or conviction (including and excluding PNDs) living in England, 2000-01 to 2009-10



Note that PNDs were only introduced for those aged 16-17 in January 2004.

Charts 1 and 2 show the similar trends between the two series considered in this report. The series which includes the PNDs in the count obviously shows slightly higher numbers but both have seen a similar level of decline in recent years. This similarity between the

two series suggests that, in general, it is not the case that the numbers of first reprimands, warnings or convictions have decreased because PNDs are being used instead.

Chart 3 Rate of young people aged 10-17 receiving their first reprimand, warning or conviction per 100,000 10-17 year old population, living in England or Wales, by region, 2009-10

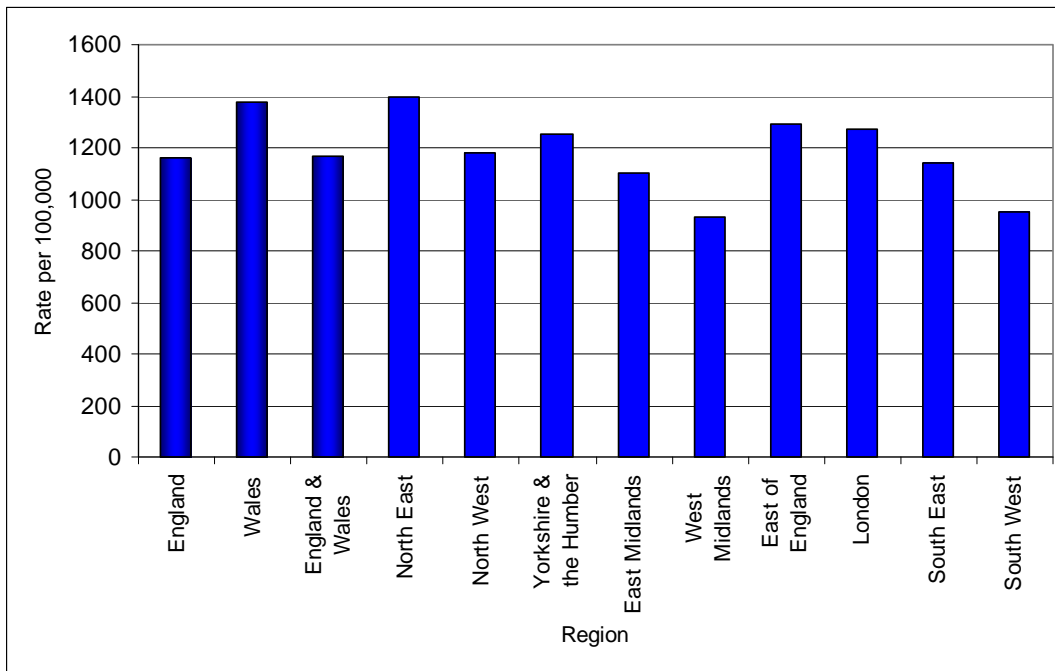


Chart 3 shows that the rates of first time young offenders vary between regions, with the West Midlands and the South West having the lowest rates and the North East having the highest.

Chart 4 Percentage change between 2008-09 and 2009-10 in the rate of young people aged 10 - 17 receiving their first reprimand, warning or conviction per 100,000 10-17 year old population, living in England or Wales, by region

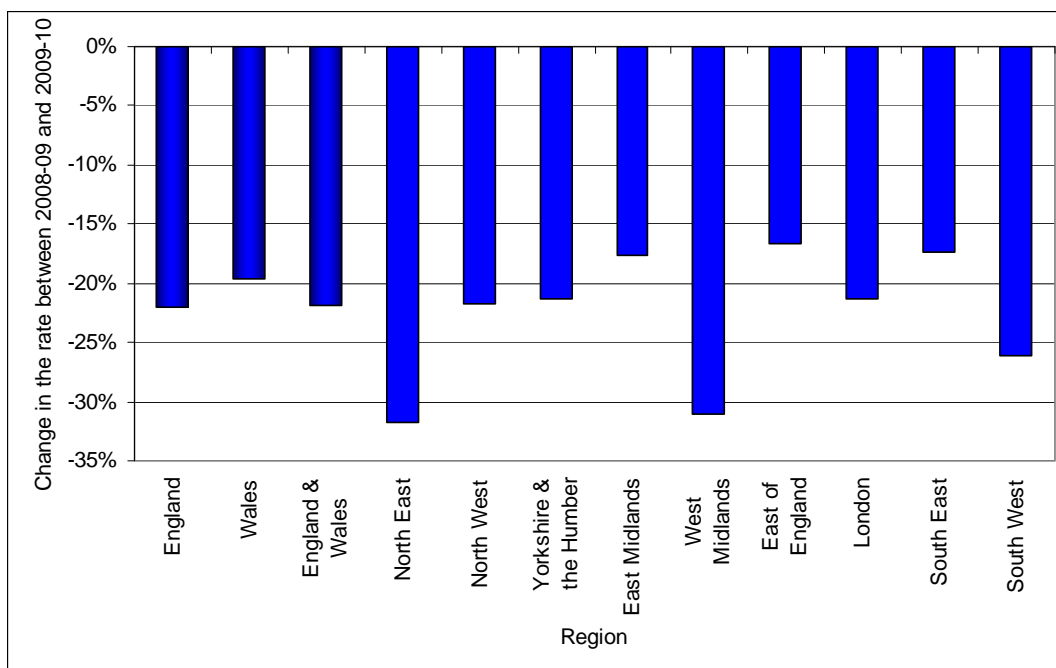


Chart 4 shows that despite having the highest rate of first time young offenders in 2009-10, the North East region has also seen the largest falls in these rates between 2008-09 and 2009-10, followed by West Midlands and the South West.

Table 1 Number of young people aged 10-17 receiving their first reprimand, warning or conviction (including and excluding PNDs), 2000-01 to 2009-10

Number of young people aged 10-17 receiving their first ...	Financial Year									
	2000-01	2001-02	2002-03	2003-04	2004-05	2005-06	2006-07	2007-08	2008-09	2009-10
...reprimand, warning or conviction, living in England.	84,326	83,228	77,790	82,713	90,403	101,440	104,233	94,361	74,588	57,291
...PND, reprimand, warning or conviction, living in England.	-	-	-	-	92,360	106,700	111,587	101,046	79,789	60,436
...reprimand, warning or conviction, processed by English or Welsh police forces.	89,857	88,902	83,266	88,213	95,670	107,187	110,188	100,105	79,851	61,422
...PND, reprimand, warning or conviction, processed by English or Welsh police forces.	-	-	-	-	97,720	112,730	118,164	107,269	85,354	64,761

As PNDs were only introduced for use with 16-17 year olds in January 2004 the data series including PNDs starts at 2004-05.

Table 1 shows the numbers of young people receiving their first reprimand, warning or conviction who were *living in* England (top two lines – as in Chart 2) and the numbers who

had their cases *processed by* English or Welsh police forces (bottom two lines) – see Notes 3-6 for further details on residency-based analyses.

The analysis at Charts 1-4 has been based on first time young offenders *living in* the areas indicated. In addition, the breakdown by local authorities (LAs) and Youth Offending Team (YOT) areas that are not coterminous with LAs (Tables 3-6) are based on first time young offenders *living in* those defined areas. However, the analysis by police force area (Tables 7-8) and the following breakdown of characteristics in Charts 5-8 are all based on first time young offenders *processed by* the given police force area.

Chart 5 Number of young people aged 10-17 receiving their first reprimand, warning or conviction, processed by English or Welsh police forces, split by gender, 2000-01 to 2009-10

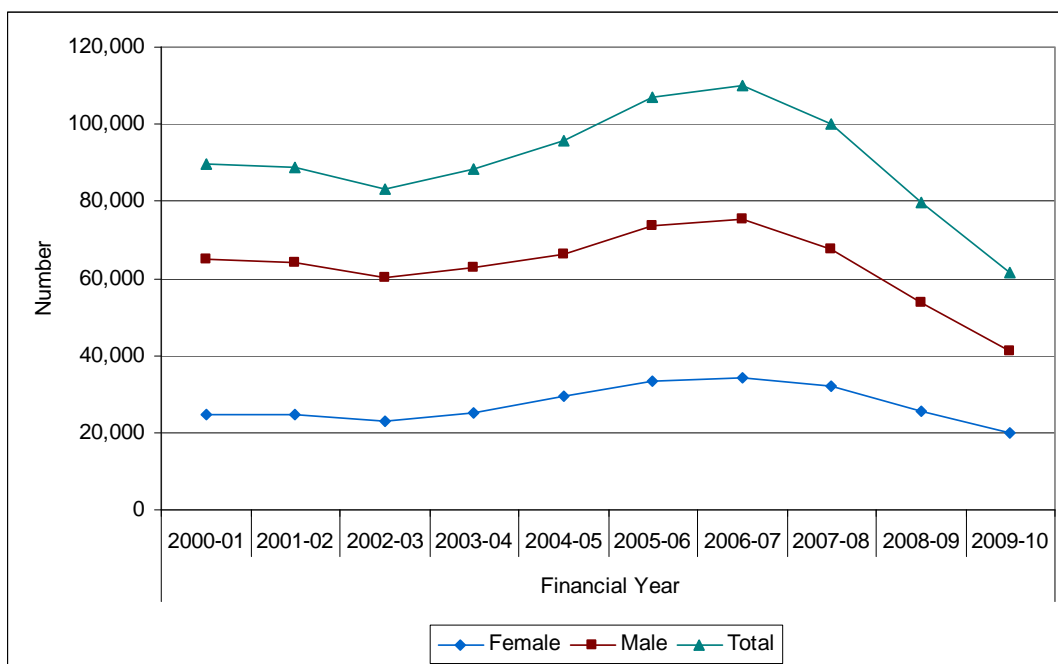


Chart 5 shows that the majority of young people aged 10-17 receiving their first reprimand, warning or conviction are male. Males and females have followed similar trends but the gender gap has closed slightly – the proportion of young male first time offenders moving from 72.5% in 2000-01 to 67.1% in 2009-10. The number of male first time young offenders fell slightly more sharply than the number of females over the last 3 years.

Chart 6 Number of young people aged 10-17 receiving their first reprimand, warning or conviction, processed by English or Welsh police forces, split by age group, 2000-01 to 2009-10

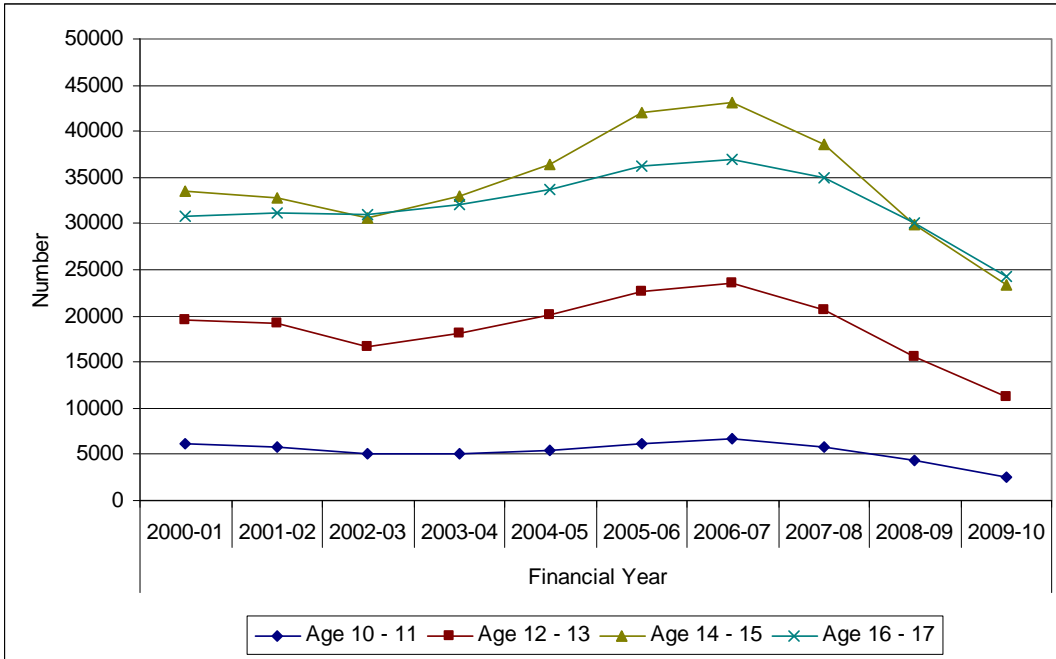


Chart 6 shows that in 2009-10 16-17 year olds were the largest group of first time offenders (24,266) closely followed by 14-15 year olds (23,382). There has been a similar trend across all four of these age groups, with all showing a decrease in numbers since 2006-07, a particularly sharp decrease in the 14-15 age group.

Chart 7 Number of young people aged 10-17 receiving their first reprimand, warning¹ or conviction, processed by English or Welsh police forces, split by outcome, 2000-01 to 2009-10

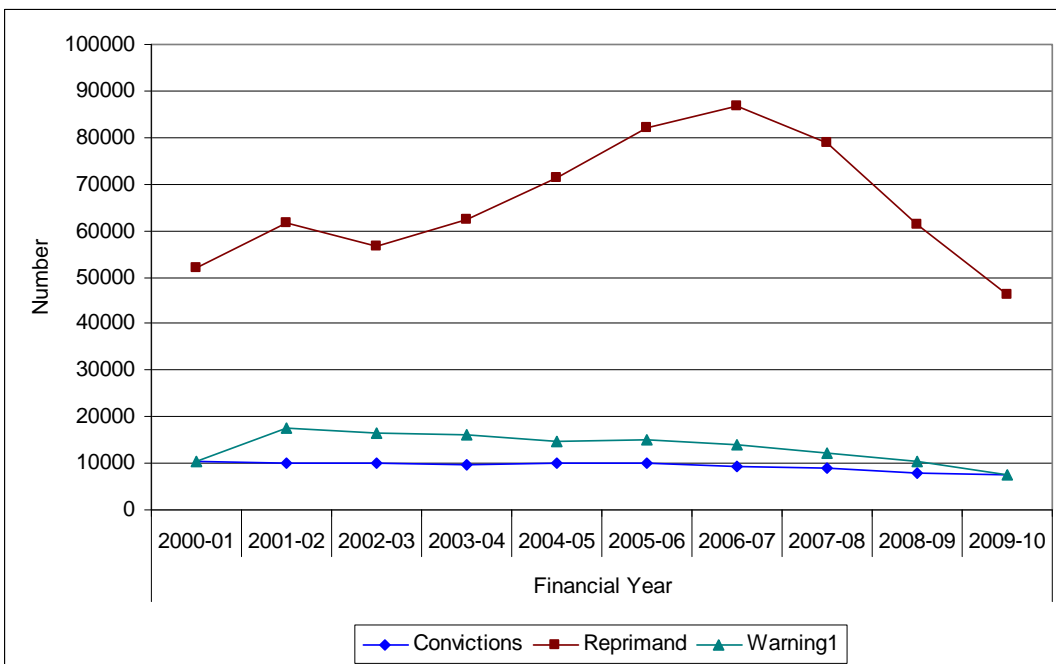


Chart 7 shows that the majority of first time young offenders receive a reprimand. This category shows a substantial decrease since 2006-07 (from 86,675 to 46,402). The other categories have also shown a downward trend in recent years. This is in line with the recent fall in the issuing of out of court disposals across all age groups in England and Wales.

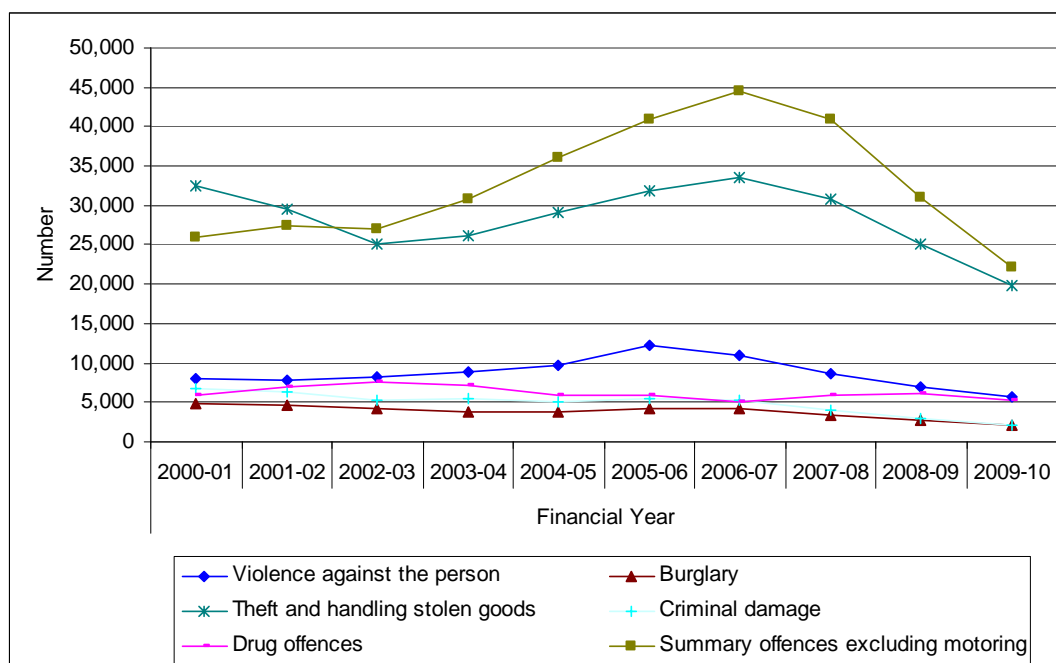
Table 2 Number of young people aged 10-17 receiving their first reprimand, warning¹ or conviction, processed by English or Welsh police forces, split by outcome and sentence, 2000-01 to 2009-10

Outcome Type	Financial Year									
	2000-01	2001-02	2002-03	2003-04	2004-05	2005-06	2006-07	2007-08	2008-09	2009-10
Warning ¹	10,496	17,482	16,527	16,180	14,602	14,999	14,125	12,206	10,426	7,494
Reprimand	52,047	61,477	56,809	62,464	71,182	82,105	86,675	78,897	61,401	46,402
Caution	17,003	-	-	-	-	-	-	-	-	-
Convictions	10,311	9,943	9,930	9,569	9,886	10,083	9,388	9,002	8,024	7,526
Of which, sentence type:										
Absolute Discharge	62	98	513	469	326	300	300	289	206	178
Conditional Discharge	3,209	2,538	449	485	493	485	436	402	238	266
Fine,	1,397	1,326	227	300	356	386	361	299	234	165
Community Penalty	4,758	5,127	8,045	7,734	8,131	8,284	7,693	7,439	6,724	6,185
Immediate Custody	429	413	457	389	411	394	373	388	382	347
Other	456	441	239	192	169	234	225	185	240	385

Reprimands and warnings replaced cautions for juveniles from 1st June 2000.

Table 2 shows that, since 2002-03, the vast majority of these young people who were convicted received a community sentence – the proportion fluctuated from a minimum of 80.8% to a maximum of 83.8%. However the number of these young people receiving a conviction has seen a downward trend since 2005-06.

Chart 8 Number of young people aged 10-17 receiving their first reprimand, warning or conviction, processed by English or Welsh police forces, split by offence class, 2000-01 to 2009-10



¹ warning figures include some offenders recoded by the police as receiving cautions for 2001 onwards

Chart 8 shows the breakdown of the first time young offender's primary offence into the six classes with the highest number of offenders (this accounts for 93% of these offenders in 2009-10).

The most common offences committed by first time young offenders fall into the category of "summary offences excluding motoring". The most common two offences within this category in 2009-10 were assault and criminal damage which between them made up 68.6% of the offences in this category. Within the "theft and handling stolen goods" category, 72.9% of the offences in 2009-10 were cases of young first time offenders shoplifting.

Table 3 Number of young people aged 10-17 receiving their first reprimand, warning or conviction by Local Authority of residence, 2000-01 to 2009-10

Local Authority Name	Financial Year									
	2000-01	2001-02	2002-03	2003-04	2004-05	2005-06	2006-07	2007-08	2008-09	2009-10
841 Darlington	213	193	212	208	218	239	262	277	106	66
840 Durham	940	948	921	873	933	1,113	1,304	1,323	612	361
390 Gateshead	469	417	485	443	455	503	521	476	368	261
805 Hartlepool	195	199	177	177	231	213	281	270	186	150
806 Middlesbrough	285	306	320	321	290	403	512	381	390	340
391 Newcastle-Upon Tyne	903	925	858	913	778	715	853	692	709	454
392 North Tyneside	518	508	477	575	487	613	569	494	393	205
929 Northumberland	594	651	687	679	723	796	789	673	629	363
807 Redcar and Cleveland	235	290	301	303	325	398	424	417	282	290
393 South Tyneside	455	446	447	503	417	537	503	487	328	185
808 Stockton-on-Tees	312	321	310	344	326	404	443	513	411	285
394 Sunderland	719	769	901	946	886	907	1,008	903	738	467
NE North East	5,838	5,973	6,097	6,286	6,068	6,841	7,468	6,906	5,153	3,427
889 Blackburn with Darwen	399	343	399	493	453	402	355	276	215	149
890 Blackpool	250	296	233	286	264	374	427	384	300	254
350 Bolton	514	478	472	579	562	775	718	579	419	263
351 Bury	308	305	283	279	392	406	368	377	251	186
875 Cheshire	945	842	852	854	1,015	1,305	1,362	1,102	771	-
895 Cheshire East	-	-	-	-	-	-	-	-	-	222
896 Cheshire West and Chester	-	-	-	-	-	-	-	-	-	278
909 Cumbria	801	952	870	915	991	1,230	1,158	1,138	848	675
876 Halton	249	224	230	180	236	364	320	245	211	174
340 Knowsley	342	347	320	366	348	241	268	359	311	278
888 Lancashire	2,165	2,274	1,865	2,052	2,061	2,407	2,181	2,044	1,530	1,309
341 Liverpool	1,031	885	977	1,098	950	685	787	895	796	692
352 Manchester	1,134	1,076	1,007	1,232	1,381	1,418	1,356	1,206	979	700
353 Oldham	529	472	366	426	539	501	491	433	384	336
354 Rochdale	486	373	341	382	538	531	424	418	361	255
355 Salford	419	422	396	504	634	597	663	462	355	273
343 Sefton	465	480	424	515	436	344	390	464	377	389
342 St Helens	313	270	288	268	267	263	326	371	335	217
356 Stockport	454	407	410	426	586	643	525	461	311	200
357 Tameside	362	384	304	330	640	629	574	475	325	199
358 Trafford	332	318	293	317	450	495	396	350	229	184
877 Warrington	308	246	221	259	307	367	390	270	297	156
359 Wigan	560	509	388	397	605	593	503	470	429	262
344 Wirral	545	513	597	563	552	399	483	532	442	353
NW North West	12,910	12,417	11,535	12,721	14,206	14,969	14,468	13,312	10,476	8,003
370 Barnsley	432	437	447	475	497	560	647	647	466	332
380 Bradford	1,010	880	975	1,093	1,341	1,449	1,323	1,069	737	581
381 Calderdale	339	320	292	378	410	414	498	416	262	205
371 Doncaster	651	635	576	460	603	770	803	643	544	454
811 East Riding of Yorkshire	394	445	436	394	476	582	589	543	489	445
810 Kingston Upon Hull, City of	643	569	514	489	577	615	654	609	513	260
382 Kirklees	693	671	672	777	940	1,086	1,080	748	589	507
383 Leeds	1,456	1,358	1,502	1,581	1,865	2,218	2,114	1,634	1,199	1,053
812 North East Lincolnshire	375	355	357	416	435	418	462	370	265	168
813 North Lincolnshire	268	300	300	285	317	432	396	334	247	184
815 North Yorkshire	813	834	770	779	909	931	1,048	1,070	785	620
372 Rotherham	398	386	414	424	496	596	627	580	398	244
373 Sheffield	859	898	857	981	1,075	1,210	1,190	1,069	855	710
384 Wakefield	585	598	592	639	708	864	886	643	537	301
816 York	340	328	262	326	323	335	345	391	292	247
YH Yorkshire and the Humber	9,258	9,014	8,964	9,497	10,973	12,479	12,662	10,767	8,177	6,309
831 Derby	515	488	481	386	474	587	469	566	502	222
830 Derbyshire	1,024	1,127	969	950	1,189	1,543	1,499	1,595	1,176	613
856 Leicester	618	677	633	683	734	916	1,043	634	385	346
855 Leicestershire	702	710	679	729	876	1,302	1,254	843	577	515
925 Lincolnshire	821	931	991	952	1,200	1,370	1,247	1,090	968	874
928 Northamptonshire	558	483	514	506	561	770	744	743	737	649
892 Nottingham	927	839	658	723	692	974	949	725	503	484
891 Nottinghamshire	1,271	1,213	1,091	1,163	1,278	1,675	1,690	1,258	982	992
857 Rutland	26	34	41	32	52	41	53	41	15	21
EM East Midlands	6,463	6,503	6,057	6,124	7,056	9,178	8,948	7,495	5,844	4,715

Table 3 continued

Local Authority Name	2000-01	2001-02	2002-03	2003-04	2004-05	2005-06	2006-07	2007-08	2008-09	2009-10
330 Birmingham	2,856	2,651	2,425	2,310	2,083	2,536	2,733	2,460	1,949	1,201
331 Coventry	812	758	671	605	623	682	751	702	491	301
332 Dudley	666	539	572	670	574	600	606	488	410	255
884 Herefordshire	250	405	334	341	328	339	405	347	276	182
333 Sandwell	733	647	699	588	497	628	674	649	565	285
893 Shropshire	305	415	358	384	425	495	520	443	345	225
334 Solihull	402	429	447	332	308	459	426	335	227	206
860 Staffordshire	1,196	1,158	1,201	1,383	1,411	1,468	1,762	1,515	443	386
861 Stoke-on-Trent	534	582	520	657	612	711	701	248	192	194
894 Telford and Wrekin	336	312	294	360	406	438	481	361	363	240
335 Walsall	695	589	625	621	609	652	624	597	405	212
937 Warwickshire	615	737	633	653	729	884	1,055	914	552	497
336 Wolverhampton	701	552	587	527	513	575	507	496	433	268
885 Worcestershire	827	1,076	964	854	1,068	1,198	1,097	950	763	561
WM West Midlands	10,927	10,848	10,331	10,284	10,184	11,665	12,342	10,505	7,413	5,013
820 Bedfordshire	590	565	563	556	662	729	689	579	552	-
822 Bedford	-	-	-	-	-	-	-	-	-	177
823 Central Bedfordshire	-	-	-	-	-	-	-	-	-	255
873 Cambridgeshire	684	682	602	625	814	1,010	1,034	1,006	787	723
881 Essex	1,874	2,003	1,766	1,880	2,473	2,747	2,618	2,867	2,444	2,059
919 Hertfordshire	1,433	1,458	1,380	1,523	1,621	1,743	2,091	1,853	1,549	1,380
821 Luton	408	409	339	415	396	424	457	397	310	326
926 Norfolk	1,179	1,094	1,022	1,113	1,193	1,286	1,728	1,614	1,096	748
874 Peterborough	349	263	230	274	411	469	428	315	324	340
882 Southend-on-Sea	278	249	234	265	326	359	325	338	235	77
935 Suffolk	1,303	1,402	1,210	1,366	1,318	1,365	1,332	1,309	1,121	857
883 Thurrock	230	216	192	189	249	324	324	312	335	294
EE East of England	8,328	8,342	7,539	8,205	9,464	10,455	11,027	10,590	8,753	7,237
201 City of London
202 Camden	259	220	230	219	209	217	248	263	246	184
204 Hackney	434	340	329	340	327	367	445	439	408	261
205 Hammersmith and Fulham	288	266	222	232	218	233	247	258	219	137
309 Haringey	486	472	485	447	438	471	487	455	378	299
206 Islington	264	285	265	297	230	310	315	319	275	208
207 Kensington and Chelsea	150	137	123	135	116	147	157	150	119	103
208 Lambeth	484	465	384	462	481	476	531	510	475	318
209 Lewisham	571	543	451	422	450	477	552	521	371	315
316 Newham	502	506	469	510	409	450	518	577	614	485
210 Southwark	460	453	332	324	340	404	424	441	507	402
211 Tower Hamlets	378	394	332	304	370	386	413	415	376	258
212 Wandsworth	316	333	310	297	308	313	325	353	315	288
213 Westminster	174	196	171	190	218	199	257	222	196	159
301 Barking and Dagenham	289	297	260	286	302	370	407	443	361	232
302 Barnet	327	351	278	317	305	323	430	343	316	267
303 Bexley	419	355	266	315	361	333	425	335	324	264
304 Brent	379	363	325	339	370	403	453	417	417	312
305 Bromley	420	347	293	353	396	377	514	393	368	266
306 Croydon	519	516	459	537	486	525	688	691	543	343
307 Ealing	414	420	322	317	329	404	498	398	355	299
308 Enfield	379	375	379	353	345	367	448	400	415	362
203 Greenwich	505	456	371	393	447	478	472	407	301	281
310 Harrow	271	241	228	178	212	224	254	229	254	188
311 Havering	265	309	296	267	303	321	379	322	292	294
312 Hillingdon	313	340	363	371	369	467	504	373	340	242
313 Hounslow	373	356	287	234	302	366	388	388	340	292
314 Kingston upon Thames	186	173	138	156	156	175	202	157	161	86
315 Merton	250	247	201	227	221	243	304	294	212	214
317 Redbridge	257	240	218	254	243	288	331	348	368	300
318 Richmond upon Thames	193	192	148	127	147	190	159	174	182	126
319 Sutton	277	220	196	239	271	280	375	347	285	260
320 Waltham Forest	344	333	275	283	257	345	404	348	363	300
L London	11,148	10,744	9,411	9,728	9,938	10,939	12,557	11,736	10,698	8,349
867 Bracknell Forest	186	142	133	125	153	192	156	157	105	64
846 Brighton and Hove	225	251	231	296	397	503	611	491	252	227
825 Buckinghamshire	471	529	589	506	715	865	726	681	529	314
845 East Sussex	621	760	646	876	934	1,063	1,027	1,220	876	790
850 Hampshire	2,075	2,034	1,752	2,121	2,249	2,098	2,043	2,200	1,922	1,596

Table 3 continued

Local Authority Name	2000-01	2001-02	2002-03	2003-04	2004-05	2005-06	2006-07	2007-08	2008-09	2009-10
921 Isle of Wight	271	274	281	267	319	362	290	268	203	192
886 Kent	2,335	2,425	2,181	2,626	2,758	2,815	3,033	2,573	2,446	2,075
887 Medway	353	421	306	477	546	612	595	537	433	425
826 Milton Keynes	428	387	366	369	767	749	603	521	493	394
931 Oxfordshire	961	857	855	831	907	1,124	1,001	891	523	264
851 Portsmouth	403	393	337	416	495	403	400	377	410	332
870 Reading	212	214	266	245	307	294	304	248	259	137
871 Slough	177	258	230	186	257	232	287	259	239	175
852 Southampton	608	506	413	488	487	478	557	544	410	353
936 Surrey	1,481	1,453	1,259	1,501	1,649	1,650	1,777	1,576	962	784
869 West Berkshire	233	230	202	225	230	272	257	216	205	126
938 West Sussex	905	1,063	1,041	1,198	1,361	1,586	1,470	1,507	1,059	1,091
868 Windsor and Maidenhead	158	186	168	141	156	181	159	179	145	94
872 Wokingham	126	110	133	122	191	196	202	166	119	80
SE South East	12,230	12,495	11,388	13,016	14,879	15,675	15,498	14,610	11,590	9,512
800 Bath and North East Somerset	197	149	164	203	196	311	307	253	179	152
837 Bournemouth	287	240	212	238	279	329	321	239	210	124
801 Bristol, City of	637	513	483	528	574	750	833	723	557	372
908 Cornwall	805	800	848	712	728	947	886	899	598	407
878 Devon	964	987	1,049	1,077	1,022	1,175	1,043	1,032	806	514
835 Dorset	449	459	415	396	676	648	766	608	314	264
916 Gloucestershire	884	864	704	729	910	1,244	1,152	1,136	941	654
420 Isles of Scilly
802 North Somerset	164	163	162	188	181	256	303	270	199	150
879 Plymouth	541	468	449	456	422	580	574	565	503	253
836 Poole	170	209	164	230	311	334	274	210	170	92
933 Somerset	476	546	473	520	672	846	975	831	607	443
803 South Gloucestershire	318	264	209	236	263	367	397	409	269	222
866 Swindon	386	388	381	334	366	397	360	345	394	364
880 Torbay	313	247	225	301	324	299	393	295	187	115
865 Wiltshire	632	594	527	700	702	754	678	624	551	599
SW South West	7,223	6,892	6,469	6,851	7,634	9,239	9,264	8,442	6,484	4,726
Eng England	84,326	83,228	77,790	82,713	90,403	101,440	104,233	94,361	74,588	57,291
660 Isle of Anglesey	124	141	124	136	156	120	124	139	134	121
661 Gwynedd	235	233	198	210	198	178	218	258	196	149
662 Conwy	195	178	200	222	169	196	229	229	190	139
663 Denbighshire	145	171	165	172	140	199	208	167	163	129
664 Flintshire	190	243	219	211	257	235	257	295	259	171
665 Wrexham	255	263	215	240	232	241	224	258	296	195
666 Powys	170	179	216	222	215	274	215	170	189	172
667 Ceredigion	119	125	126	138	117	142	118	103	92	89
668 Pembrokeshire	243	271	207	271	189	269	304	250	178	161
669 Carmarthenshire	341	342	332	330	272	370	388	302	303	254
670 Swansea	356	263	322	365	333	403	342	368	306	182
671 Neath Port Talbot	243	242	234	238	284	232	212	207	225	204
672 Bridgend	221	265	222	191	194	219	221	228	184	154
673 The Vale of Glamorgan	206	237	211	237	242	247	242	245	226	170
674 Rhondda, Cynon, Taff	372	326	346	340	379	316	346	340	321	332
675 Merthyr Tydfil	87	107	143	98	78	76	90	88	115	90
676 Caerphilly	372	390	379	362	340	361	450	368	341	258
677 Blaenau Gwent	180	179	155	168	146	140	222	169	145	143
678 Torfaen	192	219	228	212	190	248	296	233	252	148
679 Monmouthshire	110	98	145	144	132	150	182	212	141	125
680 Newport	307	358	330	310	321	337	379	429	424	307
681 Cardiff	681	678	632	577	547	647	550	584	517	402
W Wales	5,345	5,507	5,350	5,396	5,132	5,600	5,819	5,642	5,198	4,096
E&W England & Wales	89,671	88,735	83,140	88,109	95,534	107,040	110,052	100,003	79,785	61,387
998 Non England or Wales	186	167	126	104	136	147	136	102	66	35
Total Total on PNC	89,857	88,902	83,266	88,213	95,670	107,187	110,188	100,105	79,851	61,422

1 These are estimated figures. Juveniles receiving these disposals for the first time have been mapped to individual Local Authorities using the home address or postcode

2 The allocation model described in note 1 means that the number of 10-17 year old first-time entrants estimated to be in each Local Authority may not be whole numbers. Local

3 Figures for areas with less than ten first-time entrants aged 10-17 to the criminal justice system in any year have been suppressed and are denoted by "..", not applicable values

4 Figures are provisional and subject to later revision as more information is recorded by the police.

Table 4 Rates of young people aged 10-17 receiving their first reprimand, warning or conviction per 100,000 10-17 year old population by Local Authority of residence, 2000-01 to 2009-10

Local Authority Name		Financial Year									
		2000-01	2001-02	2002-03	2003-04	2004-05	2005-06	2006-07	2007-08	2008-09	2009-10
841	Darlington	2,110	1,870	2,020	1,990	2,100	2,310	2,560	2,730	1,060	680
840	Durham	1,870	1,890	1,810	1,720	1,850	2,220	2,630	2,680	1,250	760
390	Gateshead	2,430	2,140	2,480	2,270	2,360	2,640	2,770	2,560	2,010	1,470
805	Hartlepool	1,900	1,900	1,680	1,690	2,210	2,070	2,750	2,670	1,880	1,560
806	Middlesbrough	1,660	1,790	1,900	1,950	1,810	2,570	3,360	2,560	2,690	2,410
391	Newcastle-Upon Tyne	3,510	3,600	3,310	3,550	3,070	2,870	3,480	2,860	2,990	1,960
392	North Tyneside	2,710	2,610	2,420	2,920	2,500	3,180	2,990	2,630	2,140	1,150
929	Northumberland	1,870	2,040	2,160	2,150	2,320	2,580	2,600	2,240	2,130	1,250
807	Redcar and Cleveland	1,520	1,840	1,900	1,920	2,090	2,600	2,830	2,840	1,980	2,110
393	South Tyneside	2,740	2,640	2,640	2,990	2,520	3,340	3,180	3,130	2,150	1,260
808	Stockton-on-Tees	1,500	1,510	1,450	1,620	1,550	1,940	2,140	2,490	2,020	1,430
394	Sunderland	2,320	2,490	2,900	3,070	2,920	3,050	3,480	3,180	2,660	1,740
NE	North East	2,180	2,220	2,250	2,330	2,280	2,610	2,890	2,710	2,050	1,400
889	Blackburn with Darwen	2,330	1,980	2,240	2,750	2,520	2,270	2,020	1,580	1,240	870
890	Blackpool	1,840	2,130	1,630	1,960	1,810	2,570	2,970	2,670	2,120	1,840
350	Bolton	1,790	1,630	1,580	1,950	1,910	2,660	2,490	2,030	1,480	940
351	Bury	1,540	1,490	1,360	1,340	1,890	1,990	1,830	1,900	1,290	970
875	Cheshire	1,390	1,220	1,220	1,210	1,440	1,850	1,940	1,580	1,120	-
895	Cheshire East	-	-	-	-	-	-	-	-	-	630
896	Cheshire West and Chester	-	-	-	-	-	-	-	-	-	870
909	Cumbria	1,650	1,930	1,730	1,810	1,940	2,410	2,280	2,260	1,720	1,400
876	Halton	1,760	1,580	1,630	1,290	1,730	2,730	2,460	1,920	1,690	1,440
340	Knowsley	1,810	1,820	1,690	1,960	1,910	1,350	1,530	2,100	1,870	1,740
888	Lancashire	1,770	1,840	1,490	1,630	1,640	1,930	1,770	1,680	1,280	1,120
341	Liverpool	2,090	1,800	2,000	2,300	2,070	1,550	1,850	2,160	2,000	1,810
352	Manchester	2,530	2,410	2,230	2,760	3,160	3,330	3,280	2,980	2,510	1,840
353	Oldham	2,110	1,860	1,430	1,670	2,130	2,010	1,990	1,770	1,580	1,400
354	Rochdale	2,030	1,530	1,390	1,560	2,220	2,210	1,810	1,810	1,590	1,160
355	Salford	1,820	1,830	1,700	2,190	2,820	2,680	3,020	2,150	1,700	1,350
343	Sefton	1,490	1,510	1,320	1,620	1,380	1,100	1,270	1,540	1,300	1,390
342	St Helens	1,650	1,400	1,470	1,360	1,340	1,330	1,680	1,930	1,780	1,180
356	Stockport	1,520	1,340	1,340	1,390	1,920	2,130	1,780	1,580	1,090	720
357	Tameside	1,540	1,590	1,240	1,350	2,650	2,630	2,440	2,060	1,440	900
358	Trafford	1,480	1,400	1,290	1,390	1,990	2,210	1,800	1,610	1,070	870
877	Warrington	1,530	1,200	1,060	1,240	1,470	1,770	1,910	1,330	1,480	790
359	Wigan	1,760	1,580	1,190	1,210	1,850	1,830	1,570	1,490	1,380	860
344	Wirral	1,530	1,420	1,660	1,600	1,580	1,160	1,440	1,610	1,370	1,130
NW	North West	1,770	1,680	1,540	1,710	1,920	2,040	2,010	1,870	1,500	1,180
370	Barnsley	1,930	1,910	1,920	2,020	2,110	2,380	2,750	2,750	2,000	1,450
380	Bradford	1,850	1,590	1,760	1,980	2,420	2,620	2,400	1,950	1,360	1,080
381	Calderdale	1,650	1,520	1,370	1,760	1,900	1,930	2,360	1,980	1,260	990
371	Doncaster	2,070	2,000	1,800	1,440	1,900	2,460	2,600	2,110	1,820	1,570
811	East Riding of Yorkshire	1,250	1,380	1,330	1,190	1,440	1,760	1,790	1,650	1,500	1,380
810	Kingston Upon Hull, City of	2,330	2,040	1,830	1,740	2,070	2,250	2,440	2,320	2,010	1,050
382	Kirklees	1,670	1,580	1,560	1,810	2,180	2,550	2,550	1,770	1,400	1,220
383	Leeds	1,980	1,820	1,990	2,100	2,490	3,000	2,890	2,270	1,710	1,540
812	North East Lincolnshire	2,040	1,890	1,890	2,200	2,330	2,270	2,580	2,120	1,560	1,030
813	North Lincolnshire	1,660	1,820	1,800	1,700	1,880	2,580	2,380	2,020	1,520	1,160
815	North Yorkshire	1,390	1,380	1,250	1,240	1,440	1,470	1,670	1,730	1,280	1,040
372	Rotherham	1,500	1,420	1,500	1,530	1,790	2,170	2,300	2,150	1,500	930
373	Sheffield	1,780	1,840	1,730	1,970	2,150	2,430	2,400	2,180	1,760	1,490
384	Wakefield	1,740	1,750	1,710	1,830	2,050	2,520	2,620	1,930	1,650	940
816	York	2,040	1,950	1,550	1,940	1,930	2,020	2,090	2,390	1,820	1,550
YH	Yorkshire and the Humber	1,780	1,700	1,670	1,760	2,040	2,330	2,390	2,050	1,580	1,250
831	Derby	2,130	1,990	1,940	1,550	1,910	2,390	1,930	2,330	2,100	950
830	Derbyshire	1,400	1,500	1,260	1,220	1,520	1,960	1,910	2,030	1,520	810
856	Leicester	1,970	2,150	2,010	2,200	2,410	3,060	3,540	2,190	1,360	1,240
855	Leicestershire	1,150	1,140	1,070	1,140	1,360	2,020	1,950	1,320	910	830
925	Lincolnshire	1,270	1,390	1,460	1,380	1,710	1,950	1,780	1,570	1,410	1,300
928	Northamptonshire	830	700	730	710	790	1,070	1,050	1,050	1,050	940
892	Nottingham	3,380	3,090	2,390	2,630	2,550	3,710	3,710	2,910	2,080	2,070
891	Nottinghamshire	1,670	1,560	1,380	1,460	1,590	2,100	2,150	1,610	1,270	1,320
857	Rutland	690	840	900	660	1,040	780	990	740	270	390
EM	East Midlands	1,510	1,480	1,360	1,360	1,560	2,040	2,000	1,690	1,330	1,100
330	Birmingham	2,500	2,300	2,090	2,010	1,820	2,250	2,460	2,240	1,810	1,130
331	Coventry	2,480	2,300	2,030	1,850	1,920	2,150	2,400	2,280	1,620	1,020
332	Dudley	2,150	1,710	1,780	2,080	1,790	1,870	1,900	1,540	1,310	830
884	Herefordshire	1,430	2,250	1,830	1,850	1,790	1,850	2,240	1,950	1,560	1,050
333	Sandwell	2,370	2,070	2,200	1,850	1,570	2,010	2,190	2,130	1,890	970
893	Shropshire	1,050	1,410	1,190	1,260	1,390	1,610	1,690	1,450	1,130	750
334	Solihull	1,830	1,900	1,960	1,440	1,330	2,000	1,870	1,470	1,000	930
860	Staffordshire	1,420	1,360	1,400	1,610	1,650	1,730	2,100	1,820	540	480
861	Stoke-on-Trent	2,100	2,280	2,040	2,610	2,460	2,900	2,950	1,070	850	890
894	Telford and Wrekin	1,900	1,720	1,610	1,960	2,190	2,390	2,660	2,000	2,040	1,370

Table 4 continued

	Local Authority Name	2000-01	2001-02	2002-03	2003-04	2004-05	2005-06	2006-07	2007-08	2008-09	2009-10
835	Dorset	1,180	1,180	1,040	960	1,610	1,540	1,820	1,440	750	650
916	Gloucestershire	1,550	1,490	1,200	1,220	1,510	2,060	1,920	1,900	1,600	1,120
420	Isles of Scilly
802	North Somerset	880	870	860	990	950	1,320	1,560	1,390	1,020	770
879	Plymouth	2,150	1,850	1,760	1,790	1,670	2,340	2,370	2,380	2,180	1,130
836	Poole	1,270	1,520	1,180	1,650	2,230	2,410	2,000	1,560	1,290	710
933	Somerset	920	1,030	870	940	1,200	1,500	1,730	1,480	1,090	810
803	South Gloucestershire	1,290	1,040	810	910	1,010	1,390	1,500	1,550	1,020	850
866	Swindon	2,100	2,080	2,000	1,750	1,910	2,080	1,900	1,830	2,100	1,940
880	Torbay	2,510	1,920	1,720	2,280	2,440	2,270	3,020	2,300	1,490	940
865	Wiltshire	1,470	1,340	1,160	1,510	1,480	1,560	1,400	1,290	1,130	1,240
SW	South West	1,490	1,390	1,290	1,350	1,490	1,800	1,820	1,660	1,290	950
Eng	England	1,680	1,630	1,510	1,600	1,740	1,960	2,040	1,850	1,480	1,160
660	Isle of Anglesey	1,770	2,000	1,750	1,900	2,170	1,670	1,750	2,000	1,970	1,800
661	Gwynedd	2,090	2,070	1,730	1,810	1,690	1,510	1,870	2,210	1,690	1,300
662	Conwy	1,840	1,620	1,780	1,980	1,500	1,740	2,040	2,030	1,720	1,280
663	Denbighshire	1,520	1,740	1,650	1,700	1,380	2,000	2,100	1,690	1,660	1,330
664	Flintshire	1,210	1,520	1,360	1,320	1,620	1,480	1,640	1,880	1,670	1,130
665	Wrexham	1,900	1,960	1,610	1,820	1,760	1,830	1,700	1,980	2,290	1,530
666	Powys	1,330	1,360	1,610	1,650	1,570	1,980	1,550	1,220	1,380	1,280
667	Ceredigion	1,730	1,820	1,820	1,990	1,660	2,010	1,660	1,470	1,330	1,300
668	Pembrokeshire	2,060	2,280	1,700	2,150	1,490	2,100	2,390	1,980	1,410	1,300
669	Carmarthenshire	1,910	1,890	1,810	1,780	1,450	1,980	2,080	1,620	1,640	1,410
670	Swansea	1,560	1,160	1,410	1,610	1,490	1,830	1,570	1,720	1,450	890
671	Neath Port Talbot	1,700	1,680	1,610	1,640	1,960	1,610	1,480	1,480	1,630	1,500
672	Bridgend	1,620	1,900	1,580	1,360	1,380	1,580	1,620	1,670	1,360	1,160
673	The Vale of Glamorgan	1,530	1,750	1,540	1,700	1,740	1,780	1,750	1,780	1,640	1,260
674	Rhondda, Cynon, Taff	1,460	1,270	1,340	1,320	1,490	1,250	1,400	1,400	1,350	1,430
675	Merthyr Tydfil	1,320	1,610	2,160	1,510	1,210	1,200	1,450	1,460	1,960	1,570
676	Caerphilly	1,970	2,040	1,960	1,870	1,760	1,890	2,400	1,990	1,870	1,440
677	Blaenau Gwent	2,270	2,220	1,900	2,070	1,790	1,750	2,800	2,170	1,920	1,980
678	Torfaen	1,880	2,100	2,180	2,030	1,830	2,390	2,920	2,330	2,570	1,560
679	Monmouthshire	1,230	1,070	1,550	1,510	1,360	1,520	1,860	2,170	1,470	1,330
680	Newport	1,980	2,250	2,050	1,920	2,010	2,130	2,420	2,750	2,720	2,020
681	Cardiff	2,110	2,120	1,950	1,780	1,690	2,030	1,740	1,870	1,680	1,320
W	Wales	1,740	1,780	1,710	1,720	1,630	1,790	1,880	1,840	1,720	1,380
E&W	England & Wales	1,680	1,640	1,520	1,600	1,740	1,950	2,030	1,850	1,500	1,170

1 These are estimated figures. Juveniles receiving these disposals for the first time have been mapped to individual Local Authorities using the home address or postcode recorded by the police on the PNC. For those with no address recorded, a model based on the patterns of offenders dealt with by police stations has

2 The allocation model described in note 1 means that the number of 10-17 year old first-time entrants estimated to be in each Local Authority may not be whole

3 Figures for areas with less than ten first-time entrants aged 10-17 to the criminal justice system in any year have been suppressed and are denoted by "..", not applicable vales are denoted by "-".

4 Figures are provisional and subject to later revision as more information is recorded by the police.

5 Figures for the number of 10-17 year olds in the population are from mid-year population estimates produced by the Office for National Statistics.

Table 5 Number of young people aged 10-17 receiving their first reprimand, warning or conviction by YOT of residence for YOTs non-coterminous with local authorities, 2000-01 to 2009-10

YOT Name	Financial Year									
	2000-01	2001-02	2002-03	2003-04	2004-05	2005-06	2006-07	2007-08	2008-09	2009-10
Leicestershire	728	744	720	761	928	1,343	1,308	885	592	537
Wessex	3,357	3,208	2,784	3,292	3,550	3,341	3,290	3,390	2,945	2,472
Cornwall	806	801	851	715	737	949	887	901	598	408
South Tees	520	596	621	625	615	801	936	799	673	630
Tower Hamlets and City of Lond	382	397	338	307	373	395	416	418	379	260
Halton and Warrington	556	470	451	438	543	731	710	515	508	330
Shropshire, Telford and Wrekin	641	726	652	744	831	933	1,001	804	707	465
Reading and Wokingham*	338	324	399	367	498	490	506	-	-	-
Bournemouth and Poole	456	449	376	468	590	664	596	449	380	216
Worcestershire and Herefordshir	1,077	1,481	1,299	1,194	1,395	1,537	1,503	1,298	1,039	744
Cheshire	-	-	-	-	-	-	-	-	-	500
Bedfordshire	-	-	-	-	-	-	-	-	-	432

1 Reading and Wokingham split into 2 YOTs formally from 1st April 2007, Cheshire and Bedfordshire each split into 2 YOTs from 1st April 2009.

2 These are estimated figures. Juveniles receiving these disposals for the first time have been mapped to individual Local Authorities using the home address or postcode recorded by the police on the PNC then aggregated to YOT level. For those with no address recorded, a model based on the patterns of offenders dealt with by police stations has been used to allocate offenders to Local Authorities. Therefore caution must be taken when using these figures.

3 Figures for areas with less than ten first-time entrants aged 10-17 to the criminal justice system in any year have been suppressed and are denoted by ".", not applicable vales are denoted by "-".

4 Figures are provisional and subject to later revision as more information is recorded by the police.

Table 6 Rates of young people aged 10-17 receiving their first reprimand, warning or conviction per 100,000 10-17 year old population by YOT of residence for YOTs non-coterminous with local authorities, 2000-01 to 2009-10

YOT Name	Financial Year									
	2000-01	2001-02	2002-03	2003-04	2004-05	2005-06	2006-07	2007-08	2008-09	2009-10
Leicestershire	1,120	1,120	1,060	1,110	1,340	1,930	1,880	1,270	860	790
Wessex	1,870	1,770	1,510	1,790	1,920	1,810	1,800	1,870	1,640	1,390
Cornwall	1,630	1,600	1,670	1,390	1,430	1,840	1,730	1,750	1,170	810
South Tees	1,590	1,810	1,900	1,940	1,940	2,580	3,100	2,700	2,340	2,260
Tower Hamlets and City of Lond	1,730	1,800	1,560	1,450	1,810	2,010	2,160	2,220	2,040	1,400
Halton and Warrington	1,620	1,350	1,290	1,260	1,570	2,150	2,130	1,560	1,560	1,030
Shropshire, Telford and Wrekin	1,380	1,530	1,350	1,530	1,690	1,900	2,050	1,650	1,460	980
Reading and Wokingham*	1,150	1,100	1,350	1,250	1,700	1,670	1,740	-	-	-
Bournemouth and Poole	1,710	1,630	1,360	1,680	2,130	2,400	2,180	1,660	1,430	830
Worcestershire and Herefordshir	1,490	2,010	1,740	1,590	1,860	2,050	2,010	1,750	1,420	1,030
Cheshire	-	-	-	-	-	-	-	-	-	740
Bedfordshire	-	-	-	-	-	-	-	-	-	1,040

1 Reading and Wokingham split into 2 YOTs formally from 1st April 2007, Cheshire and Bedfordshire each split into 2 YOTs from 1st April 2009.

2 These are estimated figures. Juveniles receiving these disposals for the first time have been mapped to individual Local Authorities using the home address or postcode recorded by the police on the PNC, then aggregated to YOT Area. For those with no address recorded, a model based on the patterns of offenders dealt with by police stations has been used to allocate offenders to Local Authorities. Therefore caution must be taken when using these figures.

3 Figures for areas with less than ten first-time entrants aged 10-17 to the criminal justice system in any year have been suppressed and are denoted by ".", not applicable vales are denoted by "-".

4 Figures are provisional and subject to later revision as more information is recorded by the police.

5 Figures for the number of 10-17 year olds in the population are from mid-year population estimates produced by the Office for National Statistics.

Table 7 Number of young people aged 10-17 receiving their first reprimand, warning or conviction by processing Police Force Areas, 2000-01 to 2009-10

Police Force Name	Financial Year									
	2000-01	2001-02	2002-03	2003-04	2004-05	2005-06	2006-07	2007-08	2008-09	2009-10
1 Metropolitan	11,112	10,775	9,401	9,638	9,757	10,703	12,367	11,465	10,394	8,142
3 Cumbria	834	988	907	950	1,015	1,263	1,197	1,168	863	691
4 Lancashire	2,837	2,945	2,466	2,800	2,764	3,175	2,969	2,682	2,026	1,728
5 Merseyside	2,652	2,454	2,592	2,768	2,510	1,836	2,170	2,531	2,236	1,954
6 Greater Manchester	5,124	4,741	4,263	4,881	6,370	6,617	6,058	5,250	4,038	2,798
7 Cheshire	1,549	1,347	1,300	1,319	1,551	2,090	2,095	1,686	1,314	832
10 Northumbria	3,735	3,787	3,964	4,167	3,832	4,172	4,361	3,843	3,268	2,012
11 Durham	1,111	1,120	1,065	1,021	1,098	1,298	1,480	1,504	645	363
12 North Yorkshire	1,191	1,175	1,060	1,138	1,259	1,289	1,417	1,471	1,064	856
13 West Yorkshire	4,049	3,765	4,018	4,446	5,250	6,045	5,907	4,520	3,351	2,632
14 South Yorkshire	2,356	2,383	2,298	2,352	2,676	3,124	3,270	2,974	2,258	1,753
16 Humberside	1,693	1,680	1,617	1,612	1,806	2,066	2,121	1,859	1,512	1,049
17 Cleveland	1,017	1,124	1,097	1,142	1,177	1,425	1,664	1,602	1,273	1,080
20 West Midlands	6,831	6,147	6,008	5,648	5,199	6,080	6,264	5,684	4,428	2,709
21 Staffordshire	1,744	1,779	1,746	2,091	2,049	2,206	2,509	1,831	628	586
22 West Mercia	1,692	2,186	1,932	1,938	2,253	2,486	2,518	2,131	1,773	1,211
23 Warwickshire	608	743	636	658	715	888	1,035	894	558	493
30 Derbyshire	1,511	1,560	1,410	1,261	1,605	2,102	1,883	2,093	1,658	819
31 Nottinghamshire	2,225	2,073	1,755	1,888	1,976	2,632	2,680	1,998	1,480	1,469
32 Lincolnshire	836	949	1,017	953	1,202	1,359	1,240	1,087	980	918
33 Leicestershire	1,336	1,397	1,351	1,447	1,675	2,267	2,357	1,510	971	862
34 Northamptonshire	494	400	457	443	493	690	667	703	697	604
35 Cambridgeshire	1,043	947	844	919	1,247	1,517	1,480	1,343	1,130	1,072
36 Norfolk	1,197	1,125	1,041	1,118	1,209	1,304	1,759	1,643	1,105	758
37 Suffolk	1,316	1,397	1,216	1,382	1,318	1,355	1,321	1,304	1,132	870
40 Bedfordshire	983	972	868	935	964	1,105	1,068	933	792	705
41 Hertfordshire	1,449	1,501	1,413	1,588	1,724	1,839	2,234	1,915	1,640	1,485
42 Essex	2,376	2,447	2,147	2,268	3,063	3,494	3,338	3,624	3,159	2,543
43 Thames Valley	2,938	2,938	2,936	2,786	3,774	4,279	3,756	3,331	2,691	1,638
44 Hampshire	3,363	3,214	2,785	3,315	3,585	3,339	3,251	3,357	2,928	2,495
45 Surrey	1,304	1,291	1,151	1,407	1,526	1,479	1,621	1,467	899	641
46 Kent	2,832	2,903	2,535	3,143	3,364	3,447	3,665	3,146	2,902	2,521
47 Sussex	1,774	2,099	1,943	2,429	2,740	3,254	3,227	3,361	2,268	2,204
48 City of London
50 Devon & Cornwall	2,669	2,548	2,613	2,598	2,548	3,028	2,917	2,831	2,115	1,317
52 Avon & Somerset	1,773	1,627	1,474	1,656	1,893	2,542	2,838	2,489	1,834	1,341
53 Gloucestershire	884	880	711	723	892	1,226	1,151	1,124	945	660
54 Wiltshire	1,038	976	910	1,029	1,066	1,147	1,015	967	939	957
55 Dorset	924	909	806	865	1,290	1,337	1,400	1,094	696	482
60 North Wales	1,151	1,243	1,156	1,192	1,175	1,166	1,270	1,350	1,258	929
61 Gwent	1,142	1,235	1,239	1,172	1,101	1,195	1,514	1,373	1,299	960
62 South Wales	2,155	2,119	2,104	2,041	2,064	2,174	1,997	2,080	1,896	1,551
63 Dyfed-Powys	928	942	927	1,006	835	1,079	1,059	830	759	684

1 These are estimated figures. Juveniles receiving these disposals for the first time have been aggregated to Police Force Area using the processing police force recorded on the PNC.

2 Figures for areas with less than ten first-time entrants aged 10-17 to the criminal justice system in any year have been suppressed and are denoted by "..", not applicable values are denoted by "-".

3 Figures are provisional and subject to later revision as more information is recorded by the police.

Table 8 Rates of young people aged 10-17 receiving their first reprimand, warning or conviction per 100,000 10-17 year old population by processing Police Force Areas, 2000-01 to 2009-10

Police Force Name	Financial Year									
	2000-01	2001-02	2002-03	2003-04	2004-05	2005-06	2006-07	2007-08	2008-09	2009-10
1 Metropolitan Police	1,640	1,560	1,360	1,390	1,420	1,570	1,830	1,710	1,570	1,240
3 Cumbria	1,710	2,000	1,800	1,870	1,990	2,470	2,360	2,320	1,750	1,440
4 Lancashire	1,860	1,900	1,570	1,770	1,750	2,020	1,920	1,750	1,340	1,170
5 Merseyside	1,720	1,580	1,670	1,810	1,670	1,240	1,510	1,800	1,640	1,480
6 Greater Manchester	1,880	1,710	1,520	1,750	2,310	2,430	2,270	1,990	1,560	1,110
7 Cheshire	1,520	1,300	1,240	1,260	1,470	2,000	2,020	1,640	1,300	840
10 Northumbria	2,600	2,630	2,730	2,890	2,690	2,980	3,170	2,840	2,460	1,560
11 Durham	1,840	1,850	1,740	1,670	1,810	2,140	2,480	2,530	1,100	630
12 North Yorkshire	1,590	1,520	1,350	1,430	1,580	1,610	1,790	1,890	1,380	1,130
13 West Yorkshire	1,810	1,660	1,750	1,930	2,290	2,650	2,620	2,020	1,520	1,220
14 South Yorkshire	1,830	1,830	1,730	1,770	2,010	2,360	2,490	2,290	1,760	1,400
16 Humberside	1,810	1,760	1,680	1,660	1,870	2,160	2,250	2,000	1,650	1,180
17 Cleveland	1,590	1,740	1,700	1,790	1,860	2,290	2,720	2,660	2,160	1,880
20 West Midlands	2,400	2,140	2,070	1,950	1,810	2,140	2,230	2,050	1,620	1,010
21 Staffordshire	1,590	1,610	1,570	1,880	1,850	2,020	2,330	1,720	600	570
22 West Mercia	1,420	1,800	1,570	1,560	1,810	2,000	2,040	1,730	1,460	1,010
23 Warwickshire	1,210	1,440	1,220	1,250	1,350	1,680	1,960	1,690	1,060	950
30 Derbyshire	1,550	1,560	1,390	1,230	1,560	2,030	1,830	2,040	1,640	830
31 Nottinghamshire	2,150	1,970	1,650	1,760	1,840	2,480	2,570	1,940	1,460	1,490
32 Lincolnshire	1,300	1,420	1,500	1,380	1,720	1,940	1,770	1,570	1,430	1,360
33 Leicestershire	1,390	1,430	1,360	1,450	1,680	2,280	2,380	1,530	1,000	900
34 Northamptonshire	730	580	650	620	690	960	940	990	990	880
35 Cambridgeshire	1,480	1,330	1,160	1,240	1,680	2,030	1,990	1,810	1,530	1,450
36 Norfolk	1,600	1,480	1,350	1,440	1,550	1,670	2,260	2,100	1,420	990
37 Suffolk	1,920	2,030	1,740	1,970	1,860	1,910	1,860	1,830	1,590	1,240
40 Bedfordshire	1,600	1,550	1,370	1,470	1,520	1,750	1,710	1,500	1,280	1,160
41 Hertfordshire	1,390	1,410	1,310	1,450	1,560	1,650	2,000	1,710	1,470	1,340
42 Essex	1,480	1,490	1,290	1,350	1,800	2,050	1,960	2,120	1,850	1,500
43 ThamesValley	1,360	1,340	1,320	1,240	1,670	1,880	1,660	1,470	1,190	730
44 Hampshire	1,880	1,770	1,510	1,800	1,940	1,810	1,780	1,850	1,630	1,410
45 Surrey	1,300	1,260	1,100	1,320	1,420	1,370	1,480	1,330	820	580
46 Kent	1,710	1,710	1,460	1,790	1,900	1,940	2,070	1,780	1,650	1,450
47 Sussex	1,260	1,470	1,330	1,650	1,840	2,180	2,170	2,260	1,530	1,490
48 City of London
50 Devon & Cornwall	1,720	1,620	1,640	1,620	1,580	1,870	1,820	1,770	1,340	850
52 Avon and Somerset	1,200	1,080	970	1,080	1,230	1,650	1,850	1,630	1,210	900
53 Gloucestershire	1,550	1,520	1,210	1,210	1,490	2,030	1,920	1,880	1,600	1,130
54 Wiltshire	1,690	1,550	1,410	1,570	1,600	1,710	1,510	1,440	1,390	1,430
55 Dorset	1,430	1,370	1,190	1,250	1,850	1,910	2,020	1,580	1,020	720
60 North Wales	1,700	1,810	1,670	1,720	1,690	1,680	1,850	1,970	1,860	1,400
61 Gwent	1,860	1,970	1,950	1,850	1,730	1,890	2,430	2,230	2,140	1,620
62 South Wales	1,680	1,640	1,620	1,570	1,600	1,710	1,590	1,670	1,540	1,290
63 Dyfed-Powys	1,880	1,890	1,820	1,950	1,600	2,060	2,030	1,590	1,470	1,350

1 These are estimated figures. Juveniles receiving these disposals for the first time have been aggregated to Police Fore Area using the processing police force recoded on the PNC.

2 Figures for areas with less than ten first-time entrants aged 10-17 to the criminal justice system in any year have been suppressed and are denoted by "..", not applicable vales are denoted by "-".

3 Figures are provisional and subject to later revision as more information is recorded by the police.

4 Figures for the number of 10-17 year olds in the population are from mid-year population estimates produced by the Office for National Statistics.

5 Rates for the City of London look high, even though the number of cases processed by the City of London police force area are fairly low, since the population of 10-17 year olds living in this area are very small.

Explanatory notes

Definitions

1. There are two main series of data considered in this document. The primary series covers young people aged 10-17 receiving their first reprimand, warning or conviction and the secondary series covers young people aged 10-17 receiving their first Penalty Notice for Disorder (PND), reprimand, warning or conviction.
2. The rates of young people per 100,000 in the population aged 10-17 receiving one of the relevant disposals are based on Office for National Statistics mid-year population estimates. For each financial year, the mid-year population estimate for the first year has been used. For example, the 2008 mid-year population estimate has been used to calculate the rate in 2008-09.

Calculation of Local Area Figures

3. The Local Authority (LA) figures in this release have been calculated by mapping individuals to Local Authorities using the home address or postcode recorded by police on the Police National Computer (PNC). For those with no address recorded, the postcode of where the offence was committed has been used. For those with no home address information or postcode of where the offence was committed, a model based on the patterns of offenders dealt with by police stations has been used to allocate offenders to Local Authorities.
4. The headline figures shown in this document relate to young people living in England. These England only figures are calculated by aggregating the figures for the English LAs. Similarly, the breakdowns by other areas of residence are an aggregation of the relevant LA figures.
5. Since the police force area processing the case is recorded on the PNC dataset, the breakdown by police force area has been calculated using the processing police force area directly from the dataset. Published figures on crime often refer to cases processed by English or Welsh police forces so, for comparability, the figures (in Table 1) show young first time offenders processed by English or Welsh police forces alongside young first time offenders living in England.
6. There has been an improvement over time in the recording of address information on the PNC, as well as improvements made to the geographical software used to allocate cases to Local Authorities. The result has been less reliance on the allocation model in the later years considered in this release. As can be seen from the following table, in 2000-01, 87.3% of the cases in the dataset had sufficient home address, postcode or postcode of where the offence was committed to map them to Local Authorities. This proportion increased to 95.9% in 2009-10 - made up of 92.6% of cases mapped to LAs using the recorded home address or postcode and 3.3% mapped using the postcode of where the offence was committed.

Matched to LA by ...	Financial Year									
	2000-01	2001-02	2002-03	2003-04	2004-05	2005-06	2006-07	2007-08	2008-09	2009-10
Home Address	79.9%	81.0%	81.9%	82.7%	84.0%	85.8%	86.7%	91.5%	93.7%	92.6%
Offence Postcode	7.4%	8.3%	9.3%	9.3%	8.1%	6.1%	4.5%	3.0%	2.7%	3.3%
Allocation Model	12.7%	10.7%	8.8%	7.9%	7.9%	8.1%	8.8%	5.5%	3.6%	4.1%
not via allocation model	87.3%	89.3%	91.2%	92.1%	92.1%	91.9%	91.2%	94.5%	96.4%	95.9%

7. In a small number of instances the LA level data show lower numbers when including PNDs than excluding PNDs. This is counter-intuitive but can result from offenders receiving a PND, then receiving a reprimand, warning or conviction in a subsequent year. There may also be a small number of cases which the allocation model allocates to different LAs due to differing address distributions in the datasets.

Rounding and Suppression

8. The allocation model described above means that the number of first time young offenders estimated to be in each Local Authority may not be whole numbers. Figures given in the tables are rounded to whole numbers and therefore may not sum exactly to the totals displayed.
9. Local Authority, Government Office Region YOT and Police Force Area rates given in the tables in this release are rounded to the nearest ten.
10. All figures with less than ten first time young offenders in any year have been suppressed.
11. The following symbols have been used throughout the tables in this bulletin:
- = Not applicable
 - 0 = Nil
 - .. = Suppressed due to low numbers

Data Source, Coverage and Quality

12. The figures presented in this release have been taken from the Ministry of Justice's extract from the PNC, the operational database used by all police forces in England and Wales. The PNC covers 'recordable' offences, which are defined as offences that can attract a custodial sentence plus some additional non-custodial offences defined in legislation. Some non-recordable offences are also included on the PNC, particularly when they accompany recordable offences in the same case. Like any other large scale administrative database, the PNC is subject to delays and errors on data entry and processing. All the figures shown in this release may be subject to later revision as more information is recorded by the police. The recording of PNDs on the PNC by some police forces is known to have been incomplete, particularly during the early years.

13. In January 2004, PNDs (which had previously been used for those aged 18 and over) were extended for use with 16-17 year olds for minor disorder offences. PNDs are excluded from the primary figures in this Statistical Release but are included in the "Offences Brought to Justice" (OBTJ) statistics which are published in the annual "Criminal Statistics" document by the Ministry of Justice (MoJ). The latest version currently available is the 2008 Criminal Statistics publication which can be found at: <http://www.justice.gov.uk/publications/criminalannual.htm>. The 2009 Criminal Statistics publication is due to be released on 21st October 2010. OBTJ statistics are a count of total offences whereas the youth crime statistics in this document are a count of offenders who have entered into this series for the first time. A fuller comparison of the differences between the statistics can be found at: <http://www.dcsf.gov.uk/rsgateway/DB/STR/d000864/index.shtml>.
14. In addition to the main series of statistics, this document also contains a second series which includes PNDs for 16-17 year olds on the PNC dataset to allow easier interpretation of the figures alongside the OBTJ figures. The OBTJ figures include PNDs only for the four notifiable offences for which they can be issued – and these make up the majority of the PNDs recorded on the PNC. However, PNDs can be issued for a larger range of offences and the full range is included in the statistics in this bulletin.
15. The Youth Justice Board (YJB) have published the number of first-time entrants aged 10-17 to the criminal justice system. The YJB figures were aggregated from data collected from Youth Offending Teams (YOTs). The discrepancies between the figures published by YJB and those in this release reflect a difference in coverage (the YJB statistics relate to England and Wales, whilst the headline series of statistics in this publication relate to England only) and data leakage/date discrepancies between police and YOT. This generally results in YOTs recording a lower number of juvenile first-time entrants to the criminal justice system than those logged on the PNC. However, recent data suggest that this discrepancy between PNC and YOT figures is decreasing.

Contact points for further information

Previous editions of this publication were published by DfE and are available for download at:

<http://www.dcsf.gov.uk/rsgateway/DB/STR/d000933/index.shtml>

<http://www.dcsf.gov.uk/rsgateway/DB/STR/d000895/index.shtml>

<http://www.dcsf.gov.uk/rsgateway/DB/STR/d000821/index.shtml>

Spreadsheet files of the tables and graphs contained in this document are also available for download from this address.

Press enquiries should be directed to the Ministry of Justice press office:

Nilma Fox

Tel: 020 3334 3525

Email: nilima.fox@justice.gsi.gov.uk

Other enquiries about these statistics should be directed to:

Mike Cornish

Tel: 020 3334 5084

Email: mike.cornish@justice.gsi.gov.uk

General enquiries about the statistical work of the Ministry of Justice can be e-mailed to:

esd@justice.gsi.gov.uk

General information about the official statistics system of the UK is available from

www.statistics.gov.uk

© Crown copyright
Produced by the Ministry of Justice

Alternative formats are available on request from esd@justice.gsi.gov.uk