

EC Type Examination Certificate Number: **UK/ 0120/ SGS0023**

Elster Metering Systems

Elster Metering Systems
Tollgate Business Park
Beaconside
Stafford
ST16 3HS

Instrument Identification:

A1700 PB2 & PB3

Polyphase, Direct connected/ Transformer Operated, Credit,
Import/Export, Active/Reactive, Multi Rate, Electricity Meter

Instrument Traceable Number

UK/ 0120/ SGS0023

has been assessed and certified as meeting the requirements of

EC Directive 2004/22/EC

on Measuring Instruments Annex B

It is certified that the manufacturer's technical design and specimen for the above instrument has been examined and, based on the evidence submitted, it is considered that the instrument conforms to the requirements of MI-003 of EC Directive 2004/22/EC.

This certificate is to be used in conjunction with a certificate covering the product verification as required in Annex D or Annex F.

This certificate is valid for 10 years from 18th July 2008 until 17th July 2018
Issue 4

Certification is based on report number(s)
DUR42781/1/PF/EMA/04 dated 20th January 2005
DUR44513/1/KH/EMA/06 dated 28th April 2006
EMA119412 3p3w 10-100A dated 18th July 2008
EMA119412 3p4w 5-6A dated 24th July 2008
EMA119412 3p3w 5-10A dated 24th July 2008
Notified Body Number 0120

Authorised Signature
Mr J Weaver



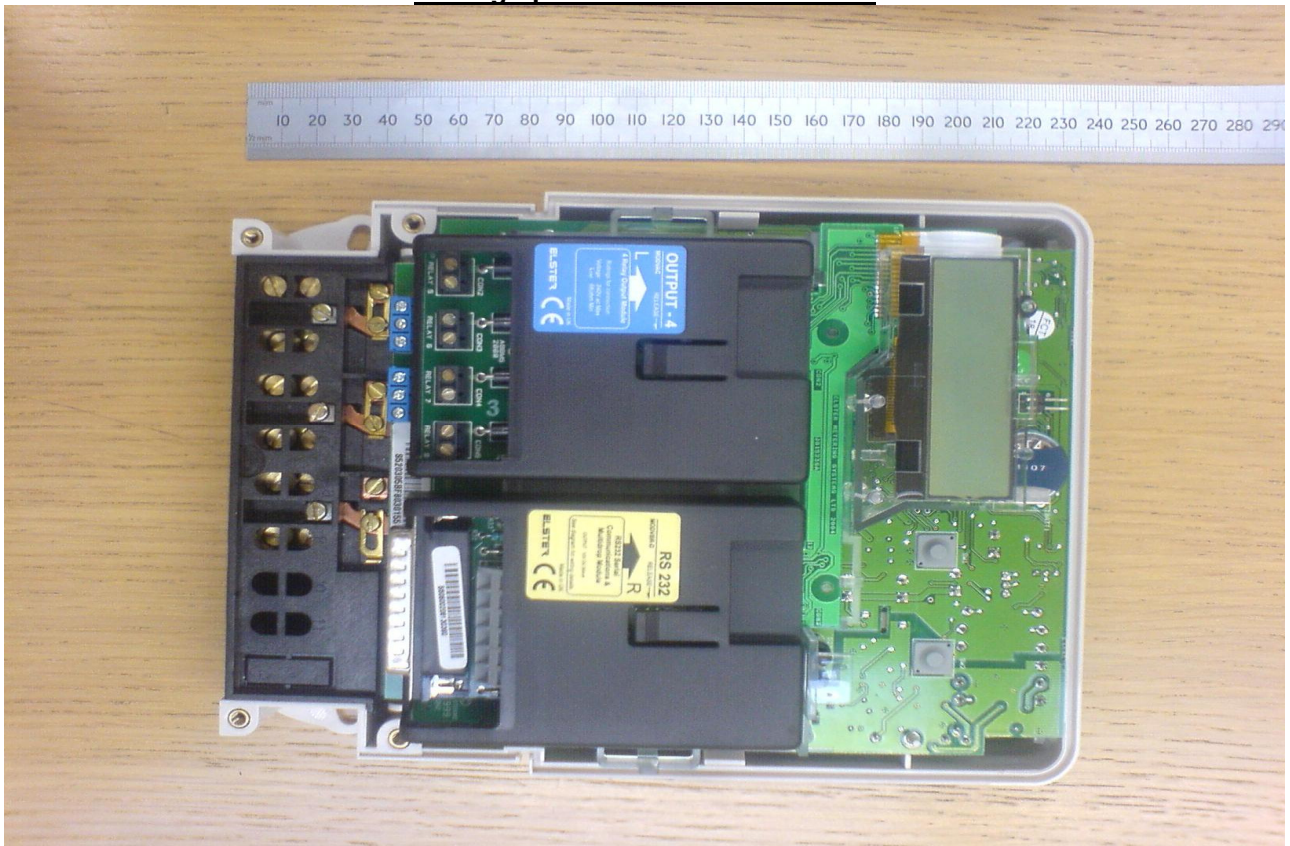
Notified Body
SGS United Kingdom Ltd, 202B Worle Parkway, Weston-super-Mare, BS22 6WA UK
t +44 (0)1934 522917 f +44 (0)1934 522137 www.sgs.com
Contact Address
SGS United Kingdom Ltd, Unit 10, South Industrial Estate, Bowburn, Durham, DH6 5AD UK
t +44 (0)191 377 2000 f +44 (0)191 377 2020 www.sgs.com

EC Type Examination Cert.

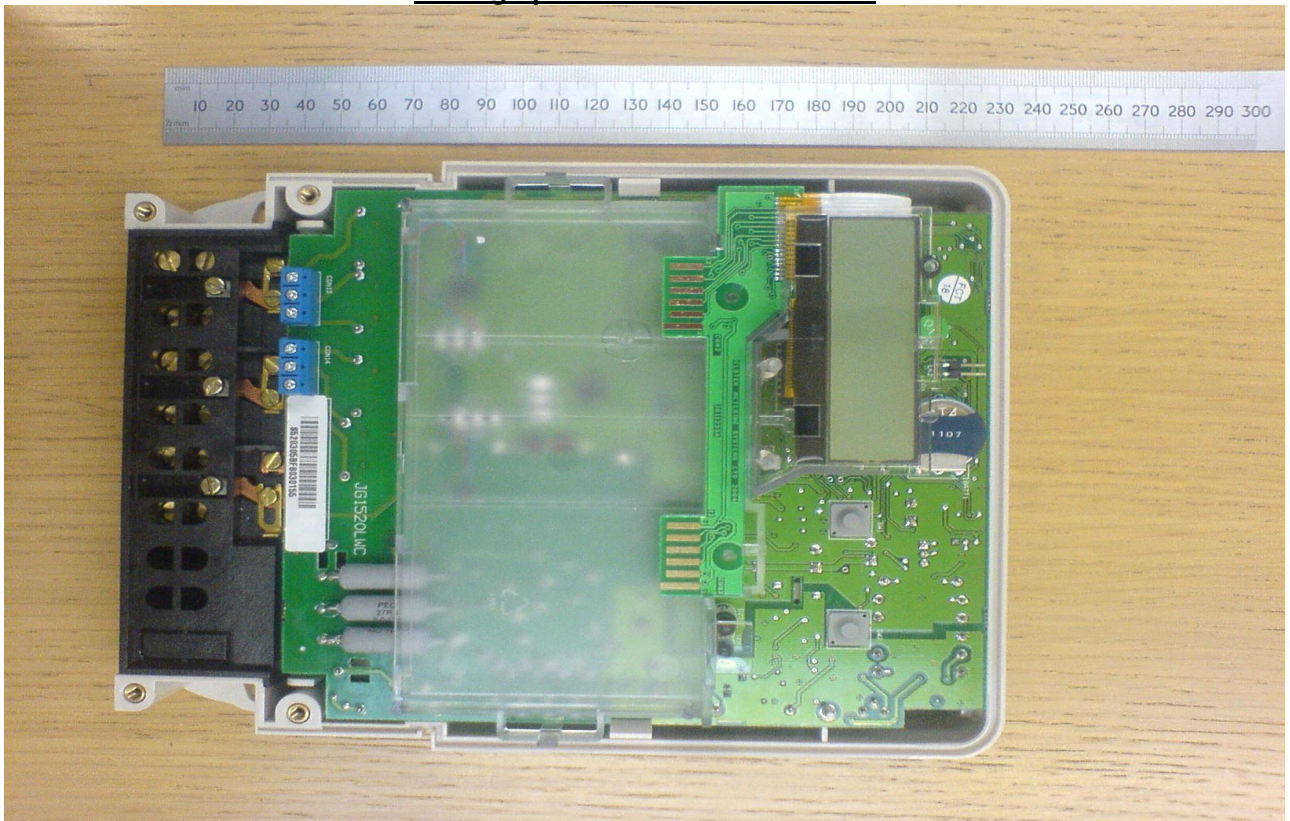
Approval Annex for EC Type Examination Cert. No. UK/ 0120/ SGS0023

Manufacturer	:	Elster Metering Systems
Type of Meter(s)	:	A1700 PB2 & PB3
Description of Meter	:	Polyphase, Direct connected/ Transformer Operated, Credit, Import/Export, Active/Reactive, Multi Rate, Electricity Meter
Accuracy Class (es)	:	A, B or C(kWh)
		Software Version No. : 2-01302-A 2-01312-A 2-01175-A Location : Nameplate
Firmware Version No	:	2-01302-A 2-01312-A 2-01175-A
Location	:	Nameplate
		Bill Of Materials No. : Drawing Numbers JG05201W, JG05202F, JG05203G, JG05204H, JG05205G, JG05261F, JG05262E, JG05263F, JG05264E, JG05265C, JG052012B, JG052013B, JG052014F, JG052015D, JG052020A, JG052022A, JG052023A, JG052024A, JG052025A, JG0520100F, JG0526100B
Meter Location	:	Indoor
		Sealing Type : Wire & Steel Crimp Location : 2 x Under terminal cover
Integrity of Meter	:	Inaccessible without breaking seals
		Temperature Range : -25°C to +55°C
Type of Circuit(s)	:	Three Phase Four Wire, Three Phase Three Wire, Two Phase Three Wire, Two Phases of Three Phase Four Wire, Single Phase Three Wire, Single Phase Two Wire
		Frequency : 50Hz
Current Range(s) (A)	:	Direct Connection 0.5-10(100)A 0.5-10(60)A 1-20(100)A 2-40(100)A 3-60(100)A Transformer Operated 0.05-5(6)A 0.05-5(10)A
		Voltage Range(s) (V) : Direct Connection 63.5V — 240V (L—N) (57.5V on 3p4w) 100V- 415V (L—L) Transformer Operated 63.5V — 240V (L—N) (57.5V on 3p4w only) 100V- 415V (L—L)

Photograph of meter Internal View 3



Photograph of meter Internal View 4



Product Variant Identification Details:

Type Designation	Description of meter
<p>Breakdown of Approved Meter type coding</p> <p>PRODUCT/ TERMINATION Polyphase A1700 Vision BS/DIN Termination _____ PB</p> <p>SERVICE TYPE 3 ph 4 wire & 1ph 2w _____ 3 3 ph 3 wire _____ 2</p> <p>CURRENT RANGE Direct Connected 10A – 100A (EN50470-3) _____ A CT Operated 5A - 6A or 5A - 10A (EN50470-3) _____ C CT Operated 5A - 6A (EN50470-3) _____ F</p> <p>VOLTAGE RANGE 63.5V - 240V (L--N) (57.5V 3ph 4wire only) _____ A 100V- 415V (L—L) _____ B</p> <p>ACCURACY CLASS Class C 50 Hz (EN50470-3) _____ A Class B 50 Hz (EN50470-3) _____ B Class A 50 Hz (EN50470-3) _____ C</p> <p>HARDWARE CONFIGURATION N:Y:Z:D:E:F:G:H:J:K:L:M:P:Q:W:S:T:U:V:B:C:1:2:3 _____ * * For description of Hardware Configuration options refer to manufacturers' model code and manual</p> <p>OPERATIONAL MODES C:E:F:G:H:J:K:L:M:N:P:Q _____ * * For description of Operation Modes refer to manufacturers' model code and manual</p> <p>TARIFFS T:N _____ * * For description of Tariff Options refer to manufacturers' model code and manual</p> <p>(Not Applicable for Type Approval Refer to manufacturers Model code and Manuals)</p> <p>ACCESS _____</p> <p>COMMUNICATIONS (Module Port B) _____</p> <p>AUXILIARY I/O (Module Port A) _____</p> <p>VERSION (Firmware) _____</p> <p>REVISION SUFFIX _____</p>	<p>Model (Factory use only) _____</p> <p>Meter Type (Nameplate) P B * * * * * * * * * * * * * *</p>

Modifications to the meter(s) described according to approval No. UK/ 0120/ SGS0023 must be notified to the issuing body to confirm the meter(s) continuing compliance to the relevant pattern approval standard(s).