

**SFR 10/2011**

**9 June 2011**

**Coverage: England**

**Theme: Children,  
Education and  
Skills**

**Issued by**

Department for Education  
Sanctuary Buildings  
Great Smith Street  
London SW1P 3BT

**Telephone:**

**Press Office**  
020 7925 6789

**Public Enquiries**  
0370 000 2288

**Statistician**

Alison Tolson

**Email**

[Attainment.STATISTICS@education.gsi.gov.uk](mailto:Attainment.STATISTICS@education.gsi.gov.uk)

**Internet**

<http://www.education.gov.uk/rsgateway/DB/SFR/>

## **PERCENTAGE OF PUPILS MAKING EXPECTED PROGRESS IN ENGLISH AND MATHEMATICS BETWEEN KEY STAGE 2 AND KEY STAGE 4 IN ENGLAND: 2007/08 – 2009/10**

### **Introduction**

This Statistical First Release (SFR) provides a short time series of the percentage of pupils making expected progress in English and in mathematics between Key Stage 2 and Key Stage 4.

This SFR provides national and Local Authority data based on a revised methodology and includes progression data for pupils completing Key Stage 4 in 2010. Data previously published for 2008 and 2009 has been updated based on the new methodology and published in this SFR.

The new methodology has been used to produce school, local authority and national figures on the same basis for the first time.

### **Key Points**

The percentage of pupils in **maintained schools** making expected progress in English and in mathematics in 2010 is as follows:

- English, 69.3 per cent (70.4 per cent for maintained mainstream schools only)
- Mathematics, 62.0 per cent (62.9 per cent for maintained mainstream schools only)

The percentage making expected progress in English has risen by 4.6 percentage points since 2009. There has been a 4.1 percentage point increase in the percentage making expected progress in mathematics.

A higher percentage of girls make expected progress in both English and in mathematics, although the gap is much smaller in mathematics. The gender gap has widened in mathematics since 2009.

Chart 1: Percentage of pupils in maintained schools making expected progress in English between KS2 and KS4

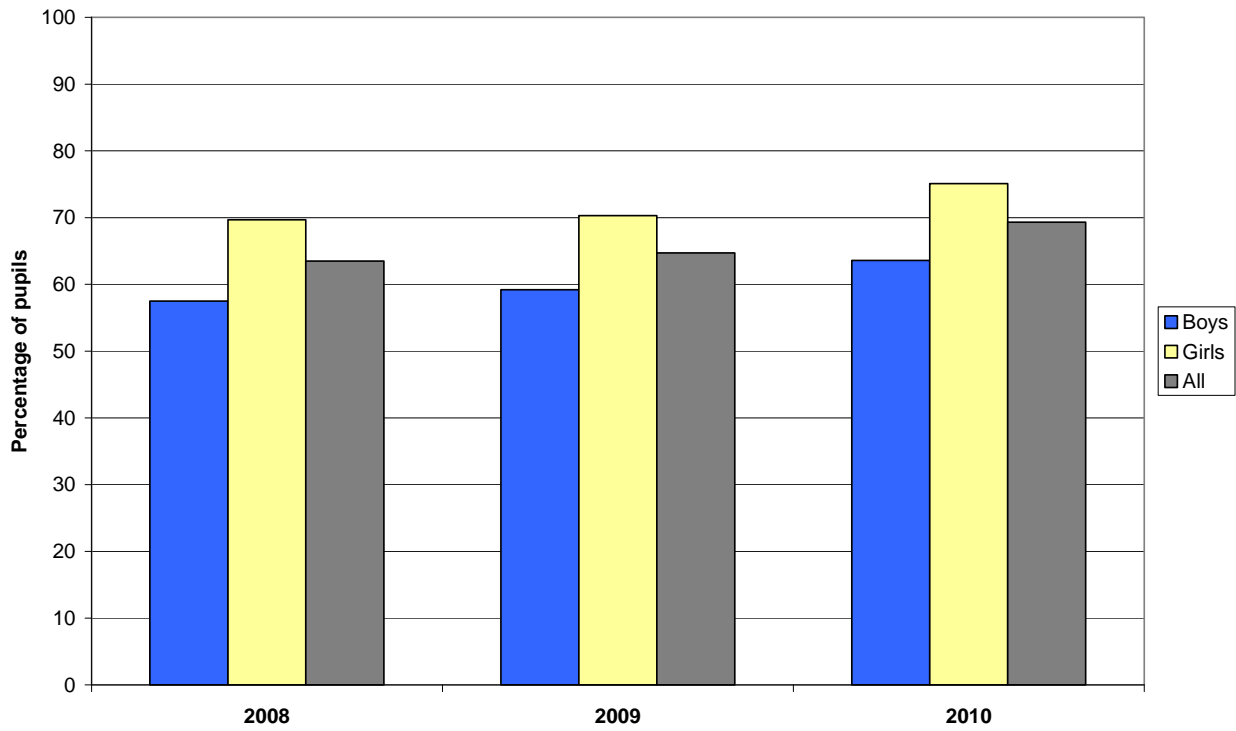
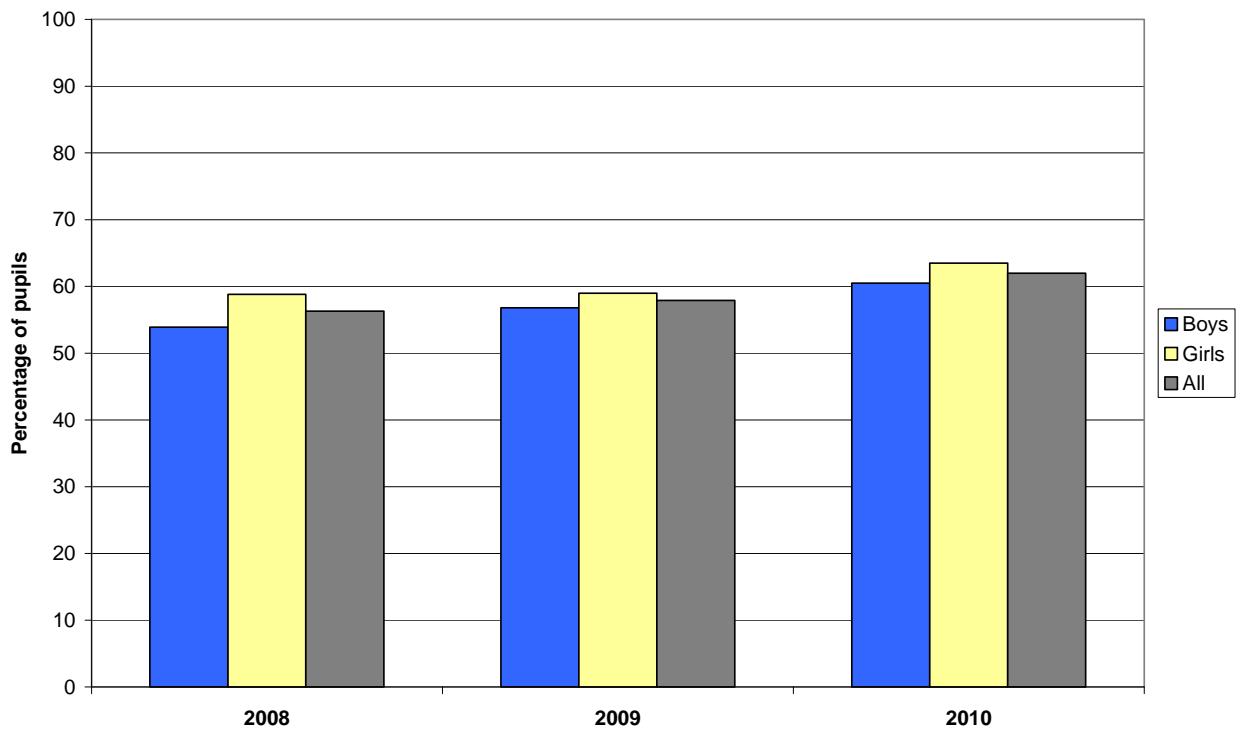


Chart 2: Percentage of pupils in maintained schools making expected progress in mathematics between KS2 and KS4



## **Tables**

Table 1	National Level: Percentage of pupils making expected progress in English and in mathematics between Key Stage 2 and Key Stage 4 by gender.
Table 2	Percentage of pupils in maintained mainstream schools making expected progress in English between Key Stage 2 and Key Stage 4, by Local Authority and Region.
Table 3	Percentage of pupils in maintained mainstream schools making expected progress in mathematics between Key Stage 2 and Key Stage 4, by Local Authority and Region.
Table 4	Percentage of pupils in maintained schools making expected progress in English between Key Stage 2 and Key Stage 4, by Local Authority and Region.
Table 5	Percentage of pupils in maintained schools making expected progress in mathematics between Key Stage 2 and Key Stage 4, by Local Authority and Region.

## **NOTES TO EDITORS**

### **Data source and coverage**

The figures in this publication cover the data prepared for the Secondary School Performance Tables (previously the Achievement and Attainment Tables). Attainment data for all pupils at the end of Key Stage 4 is collected from Examination Awarding Organisations and collated into school level data by the DfE's contractor. The unamended data is then passed to schools, together with the underlying pupil data, for checking prior to publication in the 'School and College Performance Tables'. Any amendments as a result of the school checking exercise are validated prior to publication. Any changes notified by schools in the period following publication are validated before the data is finally frozen in the spring. If any of the pupils in the dataset had taken exams in previous years their results are also included in this dataset. Occasionally, a pupil will appear more than once resulting, for example, from dual registration. Rules for deriving the main pupil record have been agreed to eliminate these duplicates. It is also possible when matching to prior attainment data that a pupil appears more than once, for example, having undergone assessments at more than one school, retaking assessments, or where a pupil has been claimed by two schools or LAs. In these cases, 1 record is derived for each pupil, combining elements of different records.

This SFR covers **maintained schools** in England, including academies, City Technology Colleges (CTCs) and maintained special schools. Independent schools, independent special schools, non-maintained special schools, hospital schools and Pupil Referral Units are excluded.

The national figures in this SFR include all pupils on roll in maintained schools. Pupils who have recently arrived from overseas are not included in the regional, Local Authority and underlying school level data.

The cohort group of pupils each year is any pupil who was deemed to be at the end of Key Stage 4. Any pupil with missing prior attainment is excluded from the calculation unless they achieved a grade B or above at GCSE (in which case they are deemed to have made the expected progress) or they did not achieve a pass grade at GCSE (in which case they are deemed to have not made expected progress). Any pupil with missing GCSE attainment is included in the

calculation as not making the expected progress.

The figures in this SFR measure progress to KS4 in full GCSE examinations (including GCSE double awards in English) and GCE AS levels. No other equivalent qualifications (e.g. short courses) are included.

### **Calculations of expected progress in English and mathematics**

#### **Calculating Key Stage 2 attainment**

- If pupil has achieved level 3, 4, 5 or 6 in the Key Stage 2 National Curriculum Test, then that grade is taken as their Key Stage 2 attainment. This happens in the majority of cases.
- If the pupil was working below the level of the test (B), not awarded a test level (N) or achieved level 2 in the Key Stage 2 test, the teacher assessment (providing it is a valid level) is used as a measure of their Key Stage 2 attainment. However that teacher assessment is capped at level 2, this means that a pupil in this situation with a teacher assessment of 3, 4, 5 or 6 will be deemed to have attained a level 2. If the teacher assessment is missing or is not valid, the pupil is excluded from the measure if they obtain grades C to G in their GCSE result (see Figure 1 below). This is because if a pupil is deemed to be below the level of the test or awarded a level 2 or N, we cannot determine their actual Key Stage 2 attainment and it would be inaccurate to use level 2 as this is only awarded as a compensatory level for pupils who do not achieve enough marks for level 3.
- If the pupil was absent, unable to access the test, missing their test result, had a lost script or did not have a grade due to malpractice in their Key Stage 2 test (grades A, T, M, X or Q) and has any valid level (W, 1, 2, 3, 4, 5 or 6) for their Key Stage 2 teacher assessment, then we take their teacher assessment level as their attainment. A Key Stage 2 test result of showing the test was taken in the past or in the future (P, F) is treated as a missing test result.
- If the pupil was absent, unable to access the test, missing their test result, had a lost script or did not have a grade due to malpractice in their Key Stage 2 test (grades A, T, M, X or Q) but does not have a valid level for their teacher assessment, then we treat them as not having a Key Stage 2 test result or teacher assessment, and the pupil is excluded from the measure. A Key Stage 2 test result that suggests the test was taken in the past or the future should not still be within the dataset (P, F) and is treated as a missing test result.
- If the pupil had left the school (L) or was ineligible (Y/Z) as their Key Stage 2 test result then we exclude them from the measure if they obtain grades C to G in their GCSE result (see Figure 1 below).

#### **Measuring progress between Key Stage 2 and Key Stage 4**

The table below shows how levels at KS2 are mapped to GCSE grades in English or mathematics to determine whether a pupil can be included in the progress measure and, if included, whether or not they have made expected progress in the subject. The measure of expected progress is built on the principle that pupils achieving a level 4 in English or in mathematics by the end of KS2 should be expected to achieve at least a C grade at GCSE in that subject.

The highest standardised points are used in the calculation of the GCSE English and mathematics level, therefore if a pupil at the end of Key Stage 4 has taken a GCSE in English and gained a grade A, and also taken a GCE AS level in English and gained a grade D, the

standardised points of the GCSE (52) will be used and not the standardised points of the GCE AS level (45).

Where AS levels are counted in place of GCSEs, those pupils with grade D and above are deemed to have made expected progress, whereas those who achieve a grade E are treated as reaching national curriculum level 7, the equivalent of grade C at GCSE.

**Figure 1: Matrix showing how the English and mathematics progression measure is calculated.**

		GCSE Grade									
		No KS4 result	U	G	F	E	D	C	B	A	A*
KS2 outcome	Working towards level 1	Expected progress not made	Expected progress not made	Expected progress made	Expected progress made	Expected progress made	Expected progress made	Expected progress made	Expected progress made	Expected progress made	Expected progress made
	Level 1	Expected progress not made	Expected progress not made	Expected progress not made	Expected progress made	Expected progress made	Expected progress made	Expected progress made	Expected progress made	Expected progress made	Expected progress made
	Level 2	Expected progress not made	Expected progress not made	Expected progress not made	Expected progress not made	Expected progress made	Expected progress made	Expected progress made	Expected progress made	Expected progress made	Expected progress made
	Level 3	Expected progress not made	Expected progress not made	Expected progress not made	Expected progress not made	Expected progress not made	Expected progress made	Expected progress made	Expected progress made	Expected progress made	Expected progress made
	Level 4	Expected progress not made	Expected progress not made	Expected progress not made	Expected progress not made	Expected progress not made	Expected progress not made	Expected progress made	Expected progress made	Expected progress made	Expected progress made
	Level 5	Expected progress not made	Expected progress not made	Expected progress not made	Expected progress not made	Expected progress not made	Expected progress not made	Expected progress not made	Expected progress made	Expected progress made	Expected progress made
	Level 6	Expected progress not made	Expected progress not made	Expected progress not made	Expected progress not made	Expected progress not made	Expected progress not made	Expected progress not made	Expected progress made	Expected progress made	Expected progress made
	Disapplied /Absent (TA)	Expected progress not made	Expected progress not made	Not included	Not included	Not included	Not included	Not included	Expected progress made	Expected progress made	Expected progress made
	Left the school	Expected progress not made	Expected progress not made	Not included	Not included	Not included	Not included	Not included	Expected progress made	Expected progress made	Expected progress made
	No TA or test	Expected progress not made	Expected progress not made	Not included	Not included	Not included	Not included	Not included	Expected progress made	Expected progress made	Expected progress made
	Not eligible for tests	Expected progress not made	Expected progress not made	Not included	Not included	Not included	Not included	Not included	Expected progress made	Expected progress made	Expected progress made

- Pupils who have not been entered for a GCSE in English or mathematics or those who are ungraded are deemed to not have made expected progress.
- Pupils attaining level 5 or level 6 at KS2 are expected to achieve at least a grade B at GCSE, therefore all pupils achieving an A\*-B are deemed to have made the expected progress, whether or not their prior attainment is known.

### **How the methodology differs from previous years**

Different methodology was used in previous years to produce the Local Authority and national figures and the school level figures which are published in the Performance Tables.

Differences from the Statistical First Release 05/2010 published on 11 March 2010 are:

- Some slight revisions have been made to ensure that pupils without Key Stage 2 test levels are treated consistently. Pupils who have a Key Stage 2 test result that suggests the test was taken in the past or the future (P, F) should not still be within the dataset and therefore their test results are treated as missing results and we take their teacher assessment as their attainment level. Pupils are only excluded from the measure if their teacher assessment is invalid. The change to the treatment of tests showing that it was taken in the past or the future has a negligible impact as there are so few in the data. There are 25 of these in the English data (of which 19 end up being treated differently) and 18 in the mathematics (of which 13 end up being treated differently). Pupils who are absent or who are unable to access the test (A, T) but do not have a valid level for their teacher assessment, are excluded from the measure. This has resulted in 160 absent or unable to access the test results being treated differently in English and 205 of these test results being treated differently in mathematics in maintained schools.
- The Local Authority and regional figures have been adjusted in this SFR to exclude pupils who have recently arrived from overseas. This is to have methodological consistency with other Key Stage 4 performance measures in the Secondary School Performance Tables and other Key Stage 4 statistical releases at Local Authority and regional level. The impact of these changes nationally can be identified by comparing the national figures in Table 1 with the total figures in Tables 2, 3, 4 and 5.
- Pupils at the end of Key Stage 4 who have taken GCE AS levels in English or mathematics, either where they have not taken a GCSE in these subjects or taken a GCSE but have a better standardised points score, are included. GCE AS levels were not included in the previous SFR methodology which counted GCSEs only. This change to the methodology ensures consistency with other Key Stage 4 performance measures in the Secondary School Performance Tables. This has minimal impact on the figures.
- The previous methodology only included maintained mainstream schools. Maintained special schools have been included in the SFR this year to be consistent with Secondary School Performance Tables and other Key Stage 4 statistical releases. Table 1 has been updated and tables 4 and 5 have been added to show the impact of including maintained special schools in the English and mathematics progression measure.

Overall the methodological changes have minimal impact. If the 2009 methodology is applied to 2010 data the percentage of pupils in maintained mainstream schools making expected progress in English is 70.3%, compared to 70.4% using the revised methodology, an increase of 4.8 percentage points from 2009. In mathematics the percentage of pupils making expected progress in maintained mainstream schools is 62.9% when either methodology is applied, an increase of 4.2 percentage points from 2009 based on the previous methodology.

## **How the methodology differs from that published in the 2010 Performance Tables**

The school level figures published in the 2010 Performance Tables are calculated differently from the figures published in this SFR. The main methodological differences are:

- The figures in the Secondary School Performance Tables use only Key Stage test results whereas those in this SFR use teacher assessments for some pupils (those who achieved a level 2 or a non-numerical level in the test). This means that pupils who had a teacher assessment but did not have a Key Stage 2 test result are included in the measure using the new methodology but would have been excluded from the measures published in the 2010 Secondary School Performance Tables. This means that 11,242 additional pupils have been included in the English measure and 15,736 additional pupils have been included in the mathematics measure.

## **Rounding**

Any percentages given in this SFR are given to one decimal place. The rounding convention is as follows: any fractions of 0.05 and above will be rounded up, anything less than 0.05 will be rounded down, e.g. 85.686 will be rounded to 85.7; 85.623 will be rounded to 85.6.

## **Additional Information**

In line with the Government's agenda to make data more accessible, school level underlying data for 2010 will be published at

<http://www.education.gov.uk/rsgateway/DB/SFR/s001010/index.shtml> on 9 June 2011 in the 'Publication's Underlying Data' section.

## **A National Statistics publication**

National Statistics are produced to high professional standards set out in the UK Statistics Authority Code of Practice for Official Statistics. They undergo regular quality assurance reviews to ensure they meet customer needs. They are produced free from any political interference.

The United Kingdom Statistics Authority has designated these statistics as National Statistics, in accordance with the Statistics and Registration Service Act 2007 and signifying compliance with the Code of Practice for Official Statistics.

Designation can be broadly interpreted to mean that the statistics:

- meet identified user needs;
- are well explained and readily accessible;
- are produced according to sound methods, and
- are managed impartially and objectively in the public interest.

Once statistics have been designated as National Statistics it is a statutory requirement that the Code of Practice shall continue to be observed.

## **Related publications**

The Statistical First Release providing revised Key Stage 2 National Curriculum Assessment results and measures of progress between Key Stage 1 and Key Stage 2 was published on 14 December 2010:

<http://www.education.gov.uk/rsgateway/DB/SFR/s000975/index.shtml> .

The Statistical First Release providing revised 2010 GCSE results for pupils at the end of Key Stage 4 was published on 12 January 2011:

<http://www.education.gov.uk/rsgateway/DB/SFR/s000985/index.shtml> .

## **ENQUIRIES**

Enquiries about the figures contained in this statistical first release should be addressed to:

Alison Tolson  
2 St Pauls Place  
125 Norfolk Street  
Sheffield  
S1 2FJ

Telephone Number: 0114 2742119

Email: [Attainment.STATISTICS@education.gsi.gov.uk](mailto:Attainment.STATISTICS@education.gsi.gov.uk)

Press enquiries should be made to the Department's Press Office at:

Department for Education,  
Sanctuary Buildings,  
Great Smith Street,  
London SW1P 3BT

Telephone number: 020 7925 6789



**Table 1: Percentage of pupils making expected progress in English and in Mathematics between Key Stage 2 and Key Stage 4 by gender  
Year: 2008 - 2010 <sup>1</sup>  
Coverage: England<sup>2</sup>**

		Maintained Mainstream Schools <sup>3</sup>					
		2008		2009		2010	
		Number of eligible pupils	Percentage making expected level of progress	Number of eligible pupils	Percentage making expected level of progress	Number of eligible pupils	Percentage making expected level of progress
English	Boys	290,719	58.8	280,252	60.6	280,409	65.1
	Girls	285,094	70.3	276,000	70.9	275,855	75.8
	Total	575,813	64.5	556,252	65.7	556,264	70.4
Mathematics	Boys	291,645	55.1	281,561	58.1	281,685	61.8
	Girls	284,998	59.4	276,113	59.6	275,966	64.1
	Total	576,643	57.2	557,674	58.8	557,651	62.9

		Maintained Schools <sup>4</sup>					
		2008		2009		2010	
		Number of eligible pupils	Percentage making expected level of progress	Number of eligible pupils	Percentage making expected level of progress	Number of eligible pupils	Percentage making expected level of progress
English	Boys	297,798	57.5	287,370	59.2	287,387	63.6
	Girls	287,920	69.7	278,722	70.3	278,503	75.1
	Total	585,718	63.5	566,092	64.7	565,890	69.3
Mathematics	Boys	298,652	53.9	288,609	56.8	288,585	60.5
	Girls	287,808	58.8	278,822	59.0	278,603	63.5
	Total	586,460	56.3	567,431	57.9	567,188	62.0

1. Final data has been used for all years.

2. Pupils included are those at the end of Key Stage 4 who have valid matched KS2 result or teacher assessment. Pupils with no prior attainment record are excluded from the calculation unless they are ungraded or have achieved grade B or above at GCSE.

3. Maintained mainstream schools only (including academies and City Technology Colleges)

4. Maintained schools (including academies, City Technology Colleges, and special schools) excluding hospital schools, Pupil Referral Units and Alternative Provision

**Table 2: Percentage of pupils in maintained mainstream schools making expected progress in English between Key Stage 2 and Key Stage 4, by Local Authority and Region<sup>1</sup>**  
**Year: 2008 - 2010<sup>2</sup>**  
**Coverage: England<sup>3,4</sup>**

	Boys						Girls						Total					
	2008		2009		2010		2008		2009		2010		2008		2009		2010	
	Number of eligible pupils	Percentage making expected progress	Number of eligible pupils	Percentage making expected progress	Number of eligible pupils	Percentage making expected progress	Number of eligible pupils	Percentage making expected progress	Number of eligible pupils	Percentage making expected progress	Number of eligible pupils	Percentage making expected progress	Number of eligible pupils	Percentage making expected progress	Number of eligible pupils	Percentage making expected progress	Number of eligible pupils	Percentage making expected progress
<b>NORTH EAST</b>	<b>15,699</b>	<b>54.5</b>	<b>14,800</b>	<b>57.7</b>	<b>14,273</b>	<b>62.2</b>	<b>15,367</b>	<b>65.2</b>	<b>14,709</b>	<b>66.8</b>	<b>14,114</b>	<b>71.1</b>	<b>31,066</b>	<b>59.8</b>	<b>29,509</b>	<b>62.2</b>	<b>28,387</b>	<b>66.7</b>
Darlington	624	54.0	586	54.9	561	64.0	574	63.1	550	66.5	529	72.2	1,198	58.3	1,136	60.6	1,090	68.0
Durham	3,094	55.2	2,762	60.5	2,677	68.1	2,968	65.7	2,745	69.8	2,632	74.7	6,062	60.3	5,507	65.2	5,309	71.4
Gateshead	1,100	59.7	1,047	61.9	999	62.3	1,098	65.6	1,042	68.2	1,033	72.9	2,198	62.6	2,089	65.1	2,032	67.7
Hartlepool	632	44.3	578	53.1	613	52.7	636	53.5	636	62.3	600	59.7	1,271	48.9	1,214	57.9	1,213	56.1
Middlesbrough	850	44.1	832	46.2	796	54.9	865	52.8	839	56.5	817	61.3	1,715	48.5	1,671	51.3	1,613	58.2
Newcastle upon Tyne	1,374	54.4	1,286	49.0	1,233	61.2	1,235	62.5	1,297	62.5	1,158	68.8	2,609	58.3	2,583	55.7	2,391	64.9
North Tyneside	1,146	63.7	1,139	65.8	1,047	66.4	1,138	73.8	1,086	73.1	1,025	72.8	2,284	68.7	2,225	69.4	2,072	69.5
Northumberland	1,920	60.2	1,849	63.1	1,742	66.4	1,868	72.5	1,824	70.6	1,740	76.3	3,788	66.3	3,673	66.8	3,482	71.3
Redcar and Cleveland	964	48.4	940	56.6	968	57.3	1,029	67.9	923	67.6	937	68.3	1,993	58.5	1,863	62.1	1,905	62.7
South Tyneside	974	57.4	896	57.3	853	69.6	886	66.3	929	67.5	852	74.3	1,860	61.6	1,825	62.5	1,705	72.0
Stockton-on-Tees	1,197	52.4	1,191	56.2	1,148	55.0	1,222	64.5	1,147	67.1	1,086	70.5	2,419	58.5	2,338	61.5	2,234	62.5
Sunderland	1,824	49.8	1,694	55.4	1,636	57.0	1,845	62.3	1,691	62.4	1,705	68.5	3,669	56.1	3,385	58.9	3,341	62.9
<b>NORTH WEST</b>	<b>42,754</b>	<b>58.1</b>	<b>40,193</b>	<b>59.5</b>	<b>39,646</b>	<b>64.8</b>	<b>41,756</b>	<b>69.1</b>	<b>39,905</b>	<b>69.7</b>	<b>39,130</b>	<b>75.1</b>	<b>84,510</b>	<b>63.6</b>	<b>80,098</b>	<b>64.6</b>	<b>78,776</b>	<b>69.9</b>
Blackburn with Darwen	912	59.1	870	58.2	866	63.4	885	71.8	852	72.3	830	75.7	1,797	65.3	1,722	65.2	1,696	69.4
Blackpool	787	51.0	765	55.6	767	64.8	823	66.1	805	69.1	752	78.3	1,610	58.7	1,570	62.5	1,539	71.4
Bolton	1,836	50.2	1,723	50.9	1,691	58.1	1,738	67.4	1,744	63.2	1,719	71.2	3,574	58.5	3,467	57.1	3,410	64.7
Bury	1,193	66.6	1,084	73.2	1,102	73.9	1,141	77.4	1,068	81.4	1,055	81.3	2,334	71.9	2,152	77.2	2,157	77.5
Cheshire <sup>5</sup>	4,072	60.3	-	-	-	-	4,090	73.0	-	-	-	-	8,162	66.7	-	-	-	-
Cheshire West and Chester <sup>6</sup>	-	-	1,986	58.3	2,014	66.8	-	-	1,812	70.9	1,828	78.1	-	-	3,798	64.3	3,842	72.2
Cheshire East <sup>7</sup>	-	-	1,907	62.2	1,854	68.9	-	-	1,922	74.4	1,989	78.6	-	-	3,899	68.5	3,843	73.9
Cumbria	3,277	55.6	3,022	57.3	3,058	61.3	3,038	67.6	2,930	67.0	2,918	73.1	6,315	61.4	5,952	62.1	5,976	67.0
Halton	778	58.9	758	50.4	751	60.6	806	70.7	723	62.4	735	69.9	1,584	64.9	1,481	56.2	1,486	65.2
Knowsley	966	41.5	814	40.5	816	45.7	898	43.9	780	47.4	764	46.3	1,864	42.7	1,594	43.9	1,580	46.0
Lancashire	6,965	63.1	6,693	63.1	6,595	66.2	6,779	74.2	6,490	74.1	6,399	78.6	13,744	68.6	13,183	68.5	12,994	72.3
Liverpool	2,611	55.7	2,456	55.7	2,360	67.8	2,689	61.7	2,654	67.3	2,532	73.7	5,300	58.7	5,110	61.8	4,892	70.8
Manchester	2,244	50.9	2,054	53.0	2,022	61.5	2,216	58.2	2,188	58.6	2,103	66.6	4,460	54.5	4,242	55.9	4,125	64.1
Oldham	1,620	55.9	1,484	58.1	1,473	62.8	1,455	68.5	1,437	67.6	1,428	74.4	3,075	61.9	2,921	62.8	2,901	68.5
Rochdale	1,261	54.4	1,319	59.1	1,244	60.3	1,301	67.6	1,162	71.1	1,197	74.1	2,562	61.1	2,481	64.7	2,441	67.1
Salford	1,169	50.3	1,081	54.9	996	62.3	1,201	59.4	1,149	66.5	1,092	71.2	2,370	54.9	2,230	60.9	2,088	67.0
Sefton	1,825	60.5	1,724	63.1	1,603	64.6	1,746	72.9	1,698	74.7	1,633	76.1	3,571	66.6	3,422	68.8	3,236	70.4
St. Helens	1,075	51.0	1,059	53.0	978	59.8	1,112	67.4	1,044	65.3	987	73.3	2,187	59.3	2,103	59.1	1,965	66.6
Stockport	1,642	63.0	1,534	64.9	1,513	69.5	1,705	72.0	1,418	70.3	1,419	78.5	3,347	67.6	2,952	67.5	2,932	73.8
Tameside	1,531	50.6	1,407	55.7	1,434	56.9	1,551	58.6	1,468	64.6	1,389	66.5	3,082	54.6	2,875	60.2	2,823	61.6
Trafford	1,503	74.5	1,394	72.9	1,439	76.2	1,391	81.2	1,390	78.1	1,333	83.0	2,894	77.7	2,784	75.5	2,772	79.5
Warrington	1,308	63.3	1,270	68.3	1,260	71.3	1,205	73.4	1,218	76.8	1,185	78.7	2,513	68.2	2,488	72.5	2,445	74.9
Wigan	2,075	56.8	1,848	58.4	1,846	65.5	2,072	71.4	1,962	70.9	1,913	77.0	4,147	64.1	3,810	64.9	3,759	71.3
Wirral	2,104	61.7	1,941	63.0	1,944	67.2	1,914	73.4	1,921	70.6	1,930	80.1	4,018	67.3	3,862	66.8	3,874	73.6
<b>YORKSHIRE &amp; HUMBER</b>	<b>31,075</b>	<b>54.2</b>	<b>29,906</b>	<b>56.9</b>	<b>29,263</b>	<b>60.8</b>	<b>30,527</b>	<b>66.4</b>	<b>28,704</b>	<b>68.0</b>	<b>28,870</b>	<b>72.5</b>	<b>61,602</b>	<b>60.2</b>	<b>58,610</b>	<b>62.3</b>	<b>58,133</b>	<b>66.6</b>
Barnsley	1,468	46.9	1,345	56.1	1,279	52.7	1,337	62.8	1,245	64.5	1,238	66.2	2,805	54.5	2,590	60.1	2,517	59.4
Bradford	2,954	50.3	2,890	52.2	2,817	56.2	2,861	63.1	2,736	66.0	2,757	69.7	5,815	56.6	5,626	58.9	5,574	62.9
Calderdale	1,281	56.8	1,352	58.7	1,323	64.2	1,343	69.1	1,223	69.4	1,240	75.1	2,624	63.1	2,575	63.8	2,563	69.4
Doncaster	1,847	46.7	1,848	50.1	1,719	54.9	1,817	60.7	1,703	60.7	1,757	69.8	3,664	53.7	3,551	55.2	3,476	62.5
East Riding of Yorkshire	2,040	60.6	1,991	62.2	1,959	65.6	1,986	72.8	1,961	72.6	1,935	77.8	4,026	66.6	3,952	67.4	3,894	71.7
Kingston upon Hull, City of	1,533	40.2	1,395	44.4	1,329	54.8	1,466	52.4	1,371	58.6	1,341	65.6	2,999	46.1	2,766	51.4	2,670	60.2
Kirklees	2,357	56.8	2,294	60.5	2,250	62.4	2,325	68.6	2,227	70.7	2,182	73.9	4,682	62.6	4,511	65.5	4,432	68.0
Leeds	4,171	55.7	4,046	53.0	3,948	57.3	4,133	66.5	3,849	64.4	3,884	69.0	8,304	61.1	7,895	58.6	7,832	63.1
North East Lincolnshire	1,103	47.4	953	56.8	945	62.0	1,033	61.8	945	63.2	986	72.0	2,136	54.4	1,988	60.0	1,931	67.1
North Lincolnshire	1,108	50.1	1,004	53.6	976	57.8	1,029	64.5	961	65.6	988	68.5	2,137	57.0	1,965	59.5	1,964	63.2
North Yorkshire	3,547	63.3	3,470	67.1	3,405	67.7	3,585	72.3	3,288	76.2	3,339	78.7	7,142	67.8	6,758	71.5	6,744	73.2
Rotherham	1,891	51.2	1,794	56.4	1,763	60.7	1,831	63.5	1,769	70.2	1,775	72.8	3,722	57.2	3,563	63.3	3,538	66.8
Sheffield	2,833	51.9	2,764	54.9	2,703	60.7	2,788	65.7	2,743	65.4	2,694	70.8	5,621	58.7	5,507	60.2	5,397	65.8
Wakefield	2,042	59.8	1,924	60.2	1,994	66.8	2,057	70.7	1,861	72.6	1,897	78.7	4,099	65.3	3,785	66.3	3,891	72.6
York	900	63.1	846	65.8	853	66.4	926	74.0	822	75.7	857	75.8	1,826	68.6	1,668	70.7	1,710	71.1

	Boys						Girls						Total					
	2008		2009		2010		2008		2009		2010		2008		2009		2010	
	Number of eligible pupils	Percentage making expected progress	Number of eligible pupils	Percentage making expected progress	Number of eligible pupils	Percentage making expected progress	Number of eligible pupils	Percentage making expected progress	Number of eligible pupils	Percentage making expected progress	Number of eligible pupils	Percentage making expected progress	Number of eligible pupils	Percentage making expected progress	Number of eligible pupils	Percentage making expected progress	Number of eligible pupils	Percentage making expected progress
<b>EAST MIDLANDS</b>	<b>26,164</b>	<b>58.0</b>	<b>25,238</b>	<b>59.8</b>	<b>25,238</b>	<b>63.9</b>	<b>25,368</b>	<b>70.1</b>	<b>24,411</b>	<b>71.3</b>	<b>24,676</b>	<b>75.7</b>	<b>51,532</b>	<b>64.0</b>	<b>49,649</b>	<b>65.4</b>	<b>49,914</b>	<b>69.7</b>
Derby	1,469	60.8	1,381	58.5	1,376	66.4	1,469	69.5	1,336	68.7	1,380	75.2	2,938	65.1	2,717	63.5	2,756	70.8
Derbyshire	4,610	54.8	4,485	58.3	4,366	60.8	4,528	69.4	4,215	70.5	4,238	74.0	9,138	62.0	8,700	64.2	8,624	67.3
Leicester	1,638	60.6	1,562	59.5	1,637	63.8	1,495	71.5	1,605	72.2	1,627	79.4	3,133	65.8	3,187	65.9	3,264	71.6
Leicestershire	3,877	66.1	3,659	65.4	3,709	67.3	3,642	77.3	3,546	75.7	3,561	79.3	7,519	71.5	7,205	70.5	7,270	73.2
Lincolnshire	4,067	63.3	4,086	65.7	4,122	70.5	4,075	73.1	3,997	75.4	4,144	80.3	8,142	68.2	8,083	70.5	8,266	75.4
Northamptonshire	4,128	57.6	3,972	61.3	3,842	64.7	3,926	70.7	3,737	73.4	3,805	76.5	8,054	64.0	7,709	67.1	7,647	70.5
Nottingham	1,350	48.4	1,359	47.8	1,269	54.9	1,386	59.1	1,247	62.2	1,351	68.4	2,736	53.8	2,606	54.7	2,620	61.9
Nottinghamshire	4,791	50.8	4,481	53.6	4,649	59.4	4,618	64.5	4,498	65.8	4,332	69.8	9,409	57.5	8,979	59.7	8,981	64.4
Rutland	234	71.4	233	65.2	248	64.1	229	80.8	230	78.3	238	81.9	463	76.0	463	71.7	486	72.8
<b>WEST MIDLANDS</b>	<b>32,645</b>	<b>57.0</b>	<b>31,261</b>	<b>59.3</b>	<b>31,199</b>	<b>64.8</b>	<b>31,917</b>	<b>70.1</b>	<b>30,690</b>	<b>70.3</b>	<b>30,717</b>	<b>77.2</b>	<b>64,562</b>	<b>63.5</b>	<b>61,951</b>	<b>64.7</b>	<b>61,916</b>	<b>70.9</b>
Birmingham	5,977	57.0	5,806	58.9	5,711	66.6	5,808	71.6	5,712	71.1	5,803	78.5	11,785	64.2	11,518	64.9	11,514	72.6
Coventry	1,710	51.4	1,658	59.1	1,712	66.4	1,708	62.7	1,650	68.5	1,686	73.5	3,418	57.1	3,308	63.8	3,398	69.9
Dudley	2,070	62.0	2,023	63.9	1,976	68.7	1,990	71.6	1,833	71.8	1,846	78.2	4,060	66.7	3,856	67.7	3,822	73.3
Herefordshire	952	58.3	952	63.8	912	65.4	989	72.8	880	70.6	930	80.1	1,941	65.7	1,832	67.0	1,842	72.8
Sandwell	1,923	44.6	1,777	49.1	1,724	53.5	1,759	61.8	1,673	60.8	1,684	71.6	3,682	52.8	3,450	54.8	3,408	62.5
Shropshire	1,607	62.0	1,549	64.6	1,624	71.9	1,624	71.9	1,532	74.0	1,547	76.7	3,231	67.0	3,081	69.3	3,164	69.7
Solihull	1,539	67.6	1,520	62.0	1,559	71.3	1,475	77.6	1,488	76.5	1,446	79.5	3,014	72.5	3,008	69.2	3,005	75.3
Staffordshire	5,061	60.0	4,715	61.3	4,701	66.0	4,993	73.1	4,745	72.8	4,754	79.4	10,054	66.5	9,460	67.1	9,455	72.7
Stoke-on-Trent	1,401	51.7	1,260	55.8	1,264	63.1	1,299	64.3	1,313	65.2	1,218	74.0	2,700	57.8	2,573	60.6	2,482	68.4
Telford and Wrekin	1,077	53.9	1,064	56.2	1,042	61.9	1,009	66.3	978	63.3	1,009	73.4	2,086	59.9	2,042	59.6	2,051	67.6
Walsall	1,900	48.4	1,853	52.3	1,776	59.5	1,868	62.3	1,727	64.4	1,692	69.9	3,768	55.3	3,580	58.1	3,468	64.5
Warrickshire	2,938	62.5	2,905	63.7	2,990	68.8	2,808	72.9	2,808	73.5	2,909	81.0	5,941	67.7	5,713	68.5	5,899	74.8
Wolverhampton	1,362	50.0	1,219	55.7	1,289	57.8	1,349	65.4	1,379	67.0	1,286	75.6	2,711	57.7	2,598	61.7	2,575	66.7
Worcestershire	3,128	58.0	2,960	58.5	2,926	63.6	3,043	72.2	2,972	71.1	2,907	77.4	6,171	65.0	5,932	64.8	5,833	70.5
<b>EAST OF ENGLAND</b>	<b>32,250</b>	<b>59.4</b>	<b>31,495</b>	<b>61.7</b>	<b>31,889</b>	<b>65.7</b>	<b>31,686</b>	<b>71.3</b>	<b>31,130</b>	<b>71.9</b>	<b>31,311</b>	<b>76.9</b>	<b>63,936</b>	<b>65.3</b>	<b>62,625</b>	<b>66.7</b>	<b>63,200</b>	<b>71.3</b>
Bedford <sup>a</sup>	-	-	864	60.6	874	64.3	-	-	873	72.6	869	76.3	-	-	1,737	66.7	1,743	70.3
Bedfordshire <sup>b</sup>	2,377	60.8	-	-	-	-	2,291	72.8	-	-	-	-	4,668	66.7	-	-	-	-
Cambridgeshire	2,955	60.8	2,794	65.4	2,957	66.9	2,852	71.7	2,811	75.0	2,878	78.5	5,807	66.2	5,605	70.2	5,835	72.6
Central Bedfordshire <sup>c</sup>	-	-	1,366	58.5	1,501	61.8	-	-	1,403	70.5	1,381	76.7	-	-	2,769	64.6	2,882	68.9
Essex	8,139	56.5	7,930	59.0	7,917	63.7	7,935	67.6	7,708	69.3	7,786	75.4	16,074	62.0	15,638	64.0	15,703	69.5
Hertfordshire	6,390	67.2	6,284	67.8	6,236	72.0	6,461	76.8	6,186	75.7	6,317	81.4	12,851	72.0	12,470	71.7	12,553	76.7
Luton	1,167	54.2	1,137	59.7	1,134	68.4	1,078	65.2	1,100	67.5	1,096	74.7	2,245	59.5	2,237	63.6	2,230	71.5
Norfolk	4,425	56.1	4,305	59.2	4,397	61.3	4,349	70.8	4,282	71.2	4,373	73.9	8,774	63.4	8,587	65.2	8,770	67.6
Peterborough	1,030	48.3	1,077	52.1	1,045	58.4	980	61.6	1,068	59.8	1,068	69.9	2,010	54.8	2,145	55.9	2,113	64.1
Southend-on-Sea	1,019	64.6	1,075	70.6	1,119	73.4	1,050	76.8	1,023	78.6	1,012	81.3	2,069	70.8	2,098	74.5	2,131	77.1
Suffolk	3,936	58.2	3,761	59.9	3,880	64.3	3,862	73.0	3,772	73.0	3,629	76.7	7,798	65.5	7,533	66.5	7,509	70.3
Thurrock	812	55.5	902	58.8	829	65.9	828	66.5	904	69.1	902	77.6	1,640	61.1	1,806	64.0	1,731	72.0
<b>LONDON</b>	<b>34,092</b>	<b>64.3</b>	<b>33,476</b>	<b>67.2</b>	<b>34,159</b>	<b>71.5</b>	<b>34,700</b>	<b>74.6</b>	<b>34,332</b>	<b>76.2</b>	<b>34,567</b>	<b>80.0</b>	<b>68,792</b>	<b>69.5</b>	<b>67,808</b>	<b>71.8</b>	<b>68,726</b>	<b>75.8</b>
<b>Inner London</b>	<b>10,049</b>	<b>61.8</b>	<b>9,958</b>	<b>64.8</b>	<b>10,140</b>	<b>68.3</b>	<b>10,766</b>	<b>72.6</b>	<b>10,788</b>	<b>74.7</b>	<b>10,797</b>	<b>78.8</b>	<b>20,815</b>	<b>67.4</b>	<b>20,746</b>	<b>70.0</b>	<b>20,937</b>	<b>73.7</b>
Camden	544	58.3	569	67.1	532	63.5	838	77.3	790	77.0	887	80.8	1,382	69.8	1,359	72.8	1,419	74.3
Hackney	304	54.9	440	65.9	390	70.0	783	74.8	794	74.4	824	84.0	1,087	69.3	1,234	71.4	1,214	79.5
Hammersmith and Fulham	491	64.2	438	71.7	438	82.6	506	83.4	499	85.0	481	92.7	997	73.9	937	78.8	919	87.9
Haringey	1,041	60.9	978	63.2	1,006	65.2	886	71.2	956	73.5	932	76.0	1,927	65.6	1,934	68.3	1,938	70.4
Islington	652	60.6	638	71.0	673	68.6	642	62.1	649	69.6	611	73.0	1,294	61.4	1,287	70.3	1,284	70.7
Kensington and Chelsea	301	79.1	295	76.6	292	79.8	245	76.7	251	74.1	241	80.9	546	78.0	546	75.5	533	80.3
Lambeth	533	66.2	606	63.0	626	64.9	732	72.5	776	78.4	823	76.1	1,265	69.9	1,382	71.6	1,449	71.2
Lewisham	949	66.3	953	65.9	1,015	61.9	1,019	73.4	971	72.7	963	74.8	1,968	70.0	1,924	69.3	1,978	68.1
Newham	1,457	59.4	1,467	63.3	1,529	62.6	1,544	74.6	1,608	73.4	1,490	76.2	3,001	67.2	3,075	68.6	3,019	69.3
Southwark	1,062	59.3	1,026	62.1	1,008	72.7	1,067	66.4	1,071	72.0	1,065	78.5	2,129	62.9	2,097	67.1	2,073	75.7
Tower Hamlets	1,209	58.6	1,103	56.6	1,159	66.8	1,079	66.8	1,061	70.7	1,069	72.3	2,288	62.5	2,164	63.5	2,228	69.4
Wandsworth	930	67.5	890	70.6	884	76.4	791	74.2	742	77.6	746	81.8	1,721	70.6	1,632	73.8	1,630	78.8
Westminster	576	56.6	555	62.2	588	73.6	634	77.6	620	81.0	665	90.7	1,210	67.6	1,175	72.1	1,253	82.7

	Boys						Girls						Total					
	2008		2009		2010		2008		2009		2010		2008		2009		2010	
	Number of eligible pupils	Percentage making expected progress	Number of eligible pupils	Percentage making expected progress	Number of eligible pupils	Percentage making expected progress	Number of eligible pupils	Percentage making expected progress	Number of eligible pupils	Percentage making expected progress	Number of eligible pupils	Percentage making expected progress	Number of eligible pupils	Percentage making expected progress	Number of eligible pupils	Percentage making expected progress	Number of eligible pupils	Percentage making expected progress
<b>Outer London</b>	<b>24,043</b>	<b>65.4</b>	<b>23,518</b>	<b>68.3</b>	<b>24,019</b>	<b>72.8</b>	<b>23,934</b>	<b>75.5</b>	<b>23,544</b>	<b>76.9</b>	<b>23,770</b>	<b>80.6</b>	<b>47,977</b>	<b>70.4</b>	<b>47,062</b>	<b>72.6</b>	<b>47,789</b>	<b>76.7</b>
Barking and Dagenham	943	56.9	973	60.4	1,052	67.2	970	64.8	925	68.5	945	73.7	1,913	61.0	1,898	64.4	1,997	70.3
Barnet	1,634	78.8	1,552	75.8	1,653	79.9	1,516	82.6	1,460	83.2	1,499	87.1	3,150	80.6	3,012	79.4	3,152	83.3
Bexley	1,605	61.6	1,571	65.1	1,599	67.6	1,506	68.7	1,494	74.7	1,545	77.0	3,111	65.0	3,065	69.8	3,144	72.2
Brent	1,176	66.8	1,203	73.5	1,285	75.6	1,246	83.5	1,233	80.5	1,265	83.2	2,422	75.4	2,436	77.1	2,550	79.4
Bromley	1,714	69.5	1,672	73.7	1,626	79.4	1,680	77.2	1,695	78.8	1,663	78.2	3,374	73.3	3,367	76.3	3,289	78.8
Croydon	1,703	54.5	1,620	63.3	1,637	66.6	1,840	69.3	1,788	71.9	1,794	76.8	3,543	62.2	3,408	67.8	3,431	71.9
Ealing	1,207	68.7	1,257	71.8	1,284	76.4	1,218	79.6	1,235	80.0	1,306	84.1	2,425	74.1	2,492	75.9	2,590	80.3
Enfield	1,878	62.7	1,725	64.4	1,720	70.6	1,691	70.1	1,669	74.2	1,687	81.5	3,569	66.2	3,394	69.2	3,407	76.0
Greenwich	1,055	55.9	996	59.4	1,038	69.7	1,154	71.4	1,187	68.8	1,071	76.2	2,209	64.0	2,183	64.5	2,109	73.0
Harrow	989	71.0	936	73.8	965	75.4	1,020	82.9	964	83.3	1,000	84.5	2,009	77.1	1,900	78.6	1,965	80.1
Havering	1,483	64.4	1,483	63.9	1,509	66.3	1,463	73.3	1,462	74.5	1,495	75.6	2,946	68.8	2,945	69.2	3,004	70.9
Hillingdon	1,461	56.2	1,345	62.0	1,405	67.0	1,409	66.7	1,347	70.7	1,409	79.6	2,870	61.4	2,692	66.4	2,814	73.3
Hounslow	1,194	63.1	1,146	69.0	1,197	72.8	1,251	77.2	1,170	78.1	1,186	84.7	2,445	70.3	2,316	73.6	2,383	78.7
Kingston upon Thames	684	70.8	637	75.4	634	79.3	738	82.5	758	85.9	732	84.7	1,422	76.9	1,395	81.1	1,366	82.2
Merton	766	62.8	737	69.3	736	67.1	656	71.2	654	72.3	676	71.6	1,422	66.7	1,391	70.7	1,412	69.3
Redbridge	1,521	74.6	1,525	75.5	1,554	82.4	1,514	84.3	1,483	85.4	1,445	86.9	3,035	79.4	3,008	80.4	2,999	84.6
Richmond upon Thames	639	61.0	680	63.2	621	67.8	717	74.9	656	78.0	644	79.3	1,356	68.4	1,336	70.5	1,265	73.7
Sutton	1,254	76.8	1,294	74.2	1,294	77.5	1,200	81.3	1,202	79.5	1,259	83.7	2,454	79.0	2,496	76.8	2,553	80.6
Waltham Forest	1,137	64.1	1,166	61.8	1,210	70.7	1,165	75.9	1,162	74.4	1,149	80.8	2,302	70.1	2,328	68.1	2,359	75.6
<b>SOUTH EAST</b>	<b>44,891</b>	<b>63.3</b>	<b>42,921</b>	<b>63.8</b>	<b>44,115</b>	<b>68.0</b>	<b>43,813</b>	<b>73.6</b>	<b>42,279</b>	<b>73.7</b>	<b>42,715</b>	<b>78.1</b>	<b>88,704</b>	<b>68.4</b>	<b>85,200</b>	<b>68.7</b>	<b>86,830</b>	<b>73.0</b>
Braintree Forest	539	60.3	493	57.4	538	67.1	504	70.2	561	64.3	506	77.5	1,043	65.1	1,054	61.1	1,044	72.1
Brighton and Hove	1,089	56.7	1,092	57.1	1,141	62.5	1,101	67.9	1,038	70.4	1,075	74.8	2,190	62.3	2,130	63.6	2,216	68.5
Buckinghamshire	2,814	71.6	2,685	71.6	2,864	73.5	2,757	79.4	2,672	82.7	2,645	82.5	5,571	75.5	5,357	77.1	5,509	77.8
East Sussex	2,654	55.9	2,511	57.5	2,653	62.5	2,452	71.1	2,516	76.2	2,516	76.2	5,272	61.2	4,963	64.2	5,169	69.2
Hampshire	7,036	66.0	6,801	66.0	6,881	68.3	6,746	76.2	6,697	76.0	6,698	79.1	13,782	71.0	13,498	71.0	13,579	73.7
Isle of Wight	759	57.0	759	53.2	749	57.4	754	71.1	708	66.2	739	72.7	1,513	64.0	1,467	59.5	1,488	65.0
Kent	8,303	58.7	8,065	61.2	8,170	66.9	8,072	71.2	7,910	70.4	7,961	76.4	16,375	64.9	15,975	65.8	16,131	71.6
Medway	1,641	62.0	1,609	67.6	1,644	65.0	1,763	72.0	1,659	72.8	1,666	73.0	3,404	67.2	3,268	70.2	3,310	69.1
Milton Keynes	1,290	59.0	1,250	65.9	1,313	67.6	1,262	68.1	1,197	70.7	1,269	77.2	2,552	63.5	2,447	68.2	2,582	72.3
Oxfordshire	3,270	63.5	3,051	63.1	3,077	68.4	3,090	72.9	2,902	73.0	3,029	75.0	6,360	68.1	5,953	67.9	6,106	71.7
Portsmouth	1,000	54.5	947	52.1	897	60.8	956	64.9	914	64.0	896	68.5	1,956	59.6	1,861	57.9	1,793	64.6
Reading	428	68.5	402	67.2	447	66.9	462	69.3	467	67.7	456	77.9	890	68.9	869	67.4	903	72.4
Slough	682	72.3	655	72.2	746	76.9	740	80.5	692	82.5	698	86.4	1,422	76.6	1,347	77.5	1,444	81.5
Southampton	1,042	54.4	990	53.5	937	54.4	1,227	70.7	1,140	71.5	1,044	72.4	2,269	63.2	2,130	63.1	1,981	63.9
Surrey	5,328	67.2	5,126	67.1	5,211	71.2	4,885	76.9	4,885	76.0	5,048	81.4	10,461	72.0	10,011	71.4	10,259	76.2
West Berkshire	1,046	67.0	935	64.4	983	74.3	957	74.4	983	72.5	944	80.6	2,003	70.5	1,918	68.6	1,927	77.4
West Sussex	4,209	65.4	3,938	63.7	4,199	69.7	4,066	75.1	3,916	75.5	3,960	79.9	8,275	70.1	7,854	69.6	8,159	74.7
Windsor and Maidenhead	818	68.5	761	69.4	772	70.9	743	78.3	698	74.6	706	80.2	1,561	73.2	1,459	71.9	1,478	75.3
Wokingham	943	70.7	851	71.7	893	76.0	862	82.8	788	80.8	859	85.8	1,805	76.5	1,639	76.1	1,752	80.8
<b>SOUTH WEST</b>	<b>28,064</b>	<b>61.7</b>	<b>27,639</b>	<b>62.7</b>	<b>27,708</b>	<b>66.0</b>	<b>27,389</b>	<b>74.2</b>	<b>26,970</b>	<b>73.2</b>	<b>27,133</b>	<b>77.2</b>	<b>55,453</b>	<b>67.9</b>	<b>54,609</b>	<b>67.9</b>	<b>54,841</b>	<b>71.6</b>
Bath and North East Somerset	990	71.4	1,022	68.1	1,037	70.3	1,120	80.4	1,090	79.9	1,143	82.4	2,110	76.2	2,112	74.2	2,180	76.7
Bournemouth	865	62.9	819	63.5	839	66.6	846	70.7	876	72.7	808	79.8	1,711	66.7	1,695	68.3	1,647	73.1
Bristol, City of	1,502	49.5	1,458	58.0	1,415	64.4	1,401	64.3	1,464	69.5	1,384	76.3	2,903	56.7	2,922	63.8	2,799	70.3
Cornwall	2,995	58.7	2,932	60.0	2,931	63.7	2,924	71.9	2,903	70.8	2,827	76.1	5,919	65.2	5,835	65.3	5,758	69.8
Devon	3,787	63.0	3,857	62.6	3,775	64.4	3,711	76.5	3,628	73.8	3,688	76.9	7,498	69.7	7,485	68.0	7,463	70.6
Dorset	2,204	66.0	2,099	66.6	2,164	69.7	2,151	78.7	2,124	77.4	2,091	82.2	4,355	72.3	4,223	72.0	4,255	75.8
Gloucestershire	3,439	65.8	3,431	65.6	3,445	68.4	3,263	78.7	3,200	77.2	3,271	77.3	6,702	72.1	6,631	71.2	6,716	72.7
Isles of Scilly	13	92.3	6	66.7	10	70.0	10	80.0	9	88.9	12	83.3	23	87.0	15	80.0	22	77.3
North Somerset	1,161	66.6	1,122	65.9	1,093	69.3	1,109	75.9	1,071	69.9	1,111	77.2	2,270	71.1	2,193	67.9	2,204	73.3
Plymouth	1,468	57.4	1,411	58.0	1,445	66.0	1,429	68.9	1,429	68.9	1,438	74.1	2,961	63.5	2,840	63.5	2,883	70.0
Poole	787	65.1	836	60.3	837	63.2	851	74.5	797	74.9	790	75.8	1,638	70.0	1,633	67.4	1,627	69.3
Somerset	2,848	59.0	2,846	60.2	2,803	65.9	2,807	71.9	2,669	69.8	2,761	75.8	5,655	65.4	5,515	64.9	5,564	70.8
South Gloucestershire	1,631	59.5	1,594	58.2	1,654	61.7	1,438	72.3	1,432	69.2	1,471	75.1	3,069	65.5	3,026	63.4	3,125	68.0
Swindon	1,062	58.0	1,083	61.9	1,028	64.8	1,060	69.3	1,054	70.7	1,050	77.4	2,122	63.7	2,137	66.2	2,078	71.2
Torbay	779	59.6	740	63.5	734	62.5	734	66.1	705	69.4	727	75.7	1,513	62.7	1,445	66.4	1,461	69.1
Wiltshire	2,533	63.2	2,383	67.1	2,498	67.3	2,471	77.3	2,519	76.7	2,561	77.9	5,004	70.1	4,902	72.0	5,059	72.6
<b>TOTAL (Maintained mainstream sector)<sup>1</sup></b>	<b>287,634</b>	<b>59.4</b>	<b>276,929</b>	<b>61.3</b>	<b>277,490</b>	<b>65.7</b>	<b>282,523</b>	<b>70.9</b>	<b>273,130</b>	<b>71.6</b>	<b>273,233</b>	<b>76.4</b>	<b>570,157</b>	<b>65.1</b>	<b>550,059</b>	<b>66.4</b>	<b>550,723&lt;/</b>	

Table 3: Percentage of pupils in maintained mainstream schools making expected progress in mathematics between Key Stage 2 and Key Stage 4, by Local Authority and Region<sup>1</sup>

Year: 2008 - 2010<sup>2</sup>

Coverage: England<sup>3,4</sup>

This table was updated on 20 June 2011 to correct errors that were present in the figures for the London regional sub-totals for columns relating to 2008. The grand totals across all regions were erroneously duplicated in these cells.

	Boys						Girls						Total					
	2008		2009		2010		2008		2009		2010		2008		2009		2010	
	Number of eligible pupils	Percentage making expected progress	Number of eligible pupils	Percentage making expected progress	Number of eligible pupils	Percentage making expected progress	Number of eligible pupils	Percentage making expected progress	Number of eligible pupils	Percentage making expected progress	Number of eligible pupils	Percentage making expected progress	Number of eligible pupils	Percentage making expected progress	Number of eligible pupils	Percentage making expected progress	Number of eligible pupils	Percentage making expected progress
<b>NORTH EAST</b>	<b>15,715</b>	<b>49.8</b>	<b>14,822</b>	<b>51.3</b>	<b>14,305</b>	<b>56.8</b>	<b>15,356</b>	<b>52.0</b>	<b>14,712</b>	<b>52.0</b>	<b>14,099</b>	<b>57.8</b>	<b>31,071</b>	<b>50.9</b>	<b>29,534</b>	<b>51.6</b>	<b>28,404</b>	<b>57.3</b>
Darlington	623	56.3	585	53.2	564	64.9	573	56.4	551	55.7	532	63.0	1,196	56.4	1,136	54.4	1,096	64.0
Durham	3,098	46.4	2,769	51.7	2,676	55.3	2,966	48.7	2,752	52.6	2,627	56.9	6,064	47.5	5,521	52.1	5,303	56.1
Gateshead	1,107	51.1	1,050	54.4	1,004	59.1	1,103	52.0	1,037	52.5	1,033	58.9	2,210	51.6	2,087	53.4	2,037	59.0
Hartlepool	630	47.6	579	50.8	613	52.5	638	49.4	636	49.7	601	57.1	1,268	48.5	1,215	50.2	1,214	54.8
Middlesbrough	845	45.6	835	37.5	799	51.9	862	42.1	836	42.3	818	48.5	1,707	43.8	1,671	39.9	1,617	50.2
Newcastle upon Tyne	1,383	43.5	1,292	46.4	1,243	56.8	1,238	44.5	1,309	46.2	1,162	57.6	2,621	44.0	2,601	46.3	2,405	57.2
North Tyneside	1,151	56.2	1,139	57.2	1,043	59.8	1,138	60.3	1,086	55.6	1,022	60.2	2,289	58.2	2,225	56.4	2,065	60.0
Northumberland	1,917	58.9	1,858	60.0	1,751	60.9	1,860	62.5	1,826	59.4	1,734	63.4	3,777	60.7	3,684	59.7	3,485	62.2
Redcar and Cleveland	963	48.5	935	52.2	969	55.9	1,028	53.6	921	54.6	937	57.1	1,991	51.1	1,856	53.4	1,906	56.5
South Tyneside	973	46.1	894	48.0	853	55.5	887	49.7	926	49.5	846	52.6	1,860	47.8	1,820	48.7	1,699	54.0
Stockton-on-Tees	1,200	54.3	1,193	51.4	1,149	54.7	1,222	57.6	1,149	55.2	1,085	59.5	2,422	56.0	2,337	53.2	2,234	57.0
Sunderland	1,825	45.9	1,693	46.3	1,641	55.3	1,841	47.3	1,688	47.5	1,702	56.5	3,666	46.6	3,381	46.9	3,343	55.9
<b>NORTH WEST</b>	<b>42,865</b>	<b>53.2</b>	<b>40,337</b>	<b>55.4</b>	<b>39,763</b>	<b>59.9</b>	<b>41,735</b>	<b>56.8</b>	<b>39,934</b>	<b>56.5</b>	<b>39,145</b>	<b>62.6</b>	<b>84,600</b>	<b>55.0</b>	<b>80,271</b>	<b>56.0</b>	<b>78,908</b>	<b>61.3</b>
Blackburn with Darwen	912	54.6	873	54.3	868	60.5	885	59.3	855	55.2	830	60.0	1,797	56.9	1,728	54.7	1,698	60.2
Blackpool	792	37.9	774	39.5	791	47.3	818	38.4	800	41.5	749	48.9	1,610	38.1	1,574	40.5	1,540	48.1
Bolton	1,835	52.5	1,731	50.6	1,690	57.6	1,740	57.1	1,748	53.5	1,728	59.0	3,575	54.8	3,479	52.1	3,418	58.3
Bury	1,196	63.3	1,088	66.0	1,105	68.0	1,142	66.5	1,068	64.4	1,052	70.1	2,338	64.8	2,156	65.2	2,157	69.0
Cheshire <sup>5</sup>	4,083	58.9	-	-	-	-	4,086	62.7	-	-	-	-	8,169	60.8	-	-	-	-
Cheshire West and Chester <sup>6</sup>	-	-	1,985	58.4	2,016	64.7	-	-	1,803	61.5	1,820	65.1	-	-	3,788	59.8	3,836	64.9
Cheshire East <sup>7</sup>	-	-	1,916	64.5	1,865	65.4	-	-	1,990	66.2	1,990	67.4	-	-	3,906	65.3	3,855	66.5
Cumbria	3,283	53.9	3,025	55.4	3,062	60.6	3,032	58.4	2,925	56.5	2,913	63.3	6,315	56.0	5,950	55.9	5,975	62.0
Halton	775	56.3	758	55.9	751	62.1	807	62.5	725	54.2	734	61.0	1,582	59.4	1,483	55.1	1,485	61.5
Knowsley	971	35.3	810	35.7	819	44.6	901	36.4	777	37.3	764	43.3	1,872	35.8	1,587	36.5	1,583	44.0
Lancashire	6,979	55.5	6,714	58.9	6,615	61.6	6,768	58.8	6,488	60.4	6,403	64.3	13,747	57.1	13,202	59.6	13,018	62.9
Liverpool	2,617	46.2	2,466	46.4	2,371	55.5	2,694	49.5	2,657	48.0	2,537	60.0	5,311	47.9	5,123	47.2	4,908	57.8
Manchester	2,262	41.1	2,091	45.0	2,050	52.2	2,228	47.2	2,222	45.9	2,126	56.4	4,490	44.1	4,313	45.4	4,176	54.4
Oldham	1,630	49.8	1,497	52.4	1,472	56.2	1,448	50.8	1,438	53.3	1,432	60.8	3,078	50.3	2,935	52.8	2,904	58.4
Rochdale	1,274	58.7	1,318	58.9	1,255	62.5	1,303	62.0	1,162	63.1	1,196	64.2	2,577	60.4	2,480	60.8	2,451	63.3
Salford	1,171	48.2	1,089	50.8	992	51.5	1,198	48.9	1,157	52.0	1,087	60.1	2,369	48.6	2,246	51.4	2,079	56.0
Sefton	1,827	54.7	1,723	54.7	1,605	58.3	1,745	59.5	1,699	56.8	1,632	61.4	3,572	57.0	3,422	55.8	3,237	59.8
St. Helens	1,075	42.0	1,058	50.8	976	55.9	1,110	51.3	1,040	49.1	989	56.3	2,185	46.7	2,098	50.0	1,965	56.1
Stockport	1,645	62.9	1,535	61.2	1,515	66.4	1,699	62.3	1,422	62.9	1,422	69.4	3,344	62.6	2,957	62.1	2,937	67.9
Tameside	1,536	49.0	1,415	51.0	1,442	54.4	1,550	51.8	1,472	51.8	1,391	57.7	3,086	50.4	2,887	51.4	2,833	56.0
Trafford	1,504	68.6	1,398	68.7	1,444	72.7	1,390	70.1	1,387	68.4	1,328	74.3	2,894	69.4	2,785	68.5	2,772	73.5
Warrington	1,312	56.3	1,276	63.6	1,272	64.3	1,205	60.1	1,218	63.8	1,183	66.4	2,517	58.1	2,494	63.7	2,455	65.3
Wigan	2,081	50.0	1,854	54.0	1,844	59.0	2,071	53.6	1,962	52.6	1,909	61.0	4,152	51.8	3,816	53.3	3,753	60.0
Wirral	2,105	54.7	1,943	58.3	1,943	61.1	1,915	60.8	1,919	61.0	1,930	68.2	4,020	57.6	3,862	59.7	3,873	64.7
<b>YORKSHIRE &amp; HUMBER</b>	<b>31,166</b>	<b>49.9</b>	<b>29,999</b>	<b>52.4</b>	<b>29,354</b>	<b>56.7</b>	<b>30,515</b>	<b>53.9</b>	<b>28,718</b>	<b>53.4</b>	<b>28,898</b>	<b>58.8</b>	<b>61,681</b>	<b>51.9</b>	<b>58,717</b>	<b>52.9</b>	<b>58,252</b>	<b>57.7</b>
Barnsley	1,468	31.7	1,347	39.0	1,282	43.4	1,337	37.8	1,241	39.8	1,239	42.2	2,805	34.6	2,588	39.4	2,521	42.8
Bradford	2,964	44.0	2,894	48.7	2,827	51.5	2,869	47.3	2,738	50.4	2,758	56.0	5,833	45.6	5,632	49.5	5,585	53.7
Calderdale	1,283	56.5	1,350	53.3	1,326	58.0	1,341	59.6	1,223	57.2	1,241	60.0	2,624	58.1	2,573	55.1	2,567	58.9
Doncaster	1,856	40.9	1,852	45.5	1,724	51.9	1,816	46.2	1,699	43.7	1,757	54.1	3,672	43.5	3,551	44.6	3,481	53.0
East Riding of Yorkshire	2,037	61.5	1,991	57.8	1,970	62.4	1,985	66.8	1,961	59.3	1,931	64.9	4,022	64.1	3,952	58.5	3,901	63.7
Kingston upon Hull, City of	1,533	30.7	1,404	37.3	1,337	44.0	1,464	34.8	1,376	38.2	1,343	43.2	2,997	32.7	2,780	37.7	2,680	43.6
Kirklees	2,354	52.1	2,289	54.8	2,260	60.4	2,331	56.3	2,227	54.5	2,182	62.5	4,685	54.2	4,516	54.7	4,442	61.4
Leeds	4,200	52.5	4,057	51.4	3,971	55.9	4,130	55.6	3,851	51.8	3,889	57.6	8,330	54.0	7,908	51.6	7,860	56.7
North East Lincolnshire	1,106	42.7	956	52.0	949	56.1	1,032	49.4	947	53.0	989	58.4	2,138	45.9	1,903	52.5	1,938	57.3
North Lincolnshire	1,109	47.1	1,003	51.4	977	56.3	1,023	51.2	962	52.0	985	57.8	2,132	49.1	1,965	51.7	1,962	57.0
North Yorkshire	3,556	59.0	3,482	64.0	3,412	66.5	3,585	63.7	3,283	66.1	3,343	69.7	7,141	61.4	6,765	65.0	6,755	68.1
Rotherham	1,900	47.4	1,799	52.6	1,762	56.0	1,837	51.7	1,772	52.3	1,773	56.0	3,737	49.5	3,571	52.5	3,535	56.0
Sheffield	2,848	49.0	2,784	53.0	2,712	58.6	2,792	53.5	2,748	53.8	2,708	60.6	5,640	51.2	5,532	53.4	5,420	59.6
Wakefield	2,049	58.3	1,949	52.5	1,993	54.4	2,050	56.1	1,869	54.3	1,902	58.0	4,099	57.2	3,818	53.4	3,895	56.2
York	903	62.8	842	63.9	852	65.0	923	65.3	821	65.2	858	66.3	1,826	64.1	1,663	64.5	1,710	65.7

	Boys						Girls						Total					
	2008		2009		2010		2008		2009		2010		2008		2009		2010	
	Number of eligible pupils	Percentage making expected progress	Number of eligible pupils	Percentage making expected progress	Number of eligible pupils	Percentage making expected progress	Number of eligible pupils	Percentage making expected progress	Number of eligible pupils	Percentage making expected progress	Number of eligible pupils	Percentage making expected progress	Number of eligible pupils	Percentage making expected progress	Number of eligible pupils	Percentage making expected progress	Number of eligible pupils	Percentage making expected progress
<b>EAST MIDLANDS</b>	<b>26,243</b>	<b>52.1</b>	<b>25,367</b>	<b>55.9</b>	<b>25,311</b>	<b>59.3</b>	<b>25,327</b>	<b>56.5</b>	<b>24,467</b>	<b>57.8</b>	<b>24,686</b>	<b>62.1</b>	<b>51,570</b>	<b>54.2</b>	<b>49,834</b>	<b>56.8</b>	<b>49,997</b>	<b>60.7</b>
Derby	1,469	55.4	1,389	54.4	1,379	64.3	1,472	57.3	1,334	55.3	1,384	64.5	2,941	56.4	2,723	54.9	2,763	64.4
Derbyshire	4,622	52.8	4,508	56.0	4,386	58.8	4,509	57.0	4,224	58.1	4,231	61.3	9,131	54.9	8,732	57.0	8,617	60.0
Leicester	1,673	49.3	1,608	54.4	1,651	57.6	1,518	51.6	1,623	56.9	1,639	64.6	3,191	50.4	3,231	55.7	3,290	61.1
Leicestershire	3,885	57.6	3,667	59.4	3,725	61.2	3,628	60.7	3,556	59.1	3,547	63.5	7,513	59.1	7,223	59.3	7,272	62.3
Lincolnshire	4,057	58.6	4,098	62.5	4,127	64.7	4,053	62.5	3,992	65.2	4,141	68.4	8,110	60.6	8,090	63.9	8,268	66.5
Northamptonshire	4,141	50.9	3,981	55.0	3,856	58.0	3,917	56.5	3,727	56.8	3,815	60.6	8,058	53.6	7,708	55.9	7,671	59.3
Nottingham	1,352	38.8	1,385	47.7	1,279	50.7	1,389	42.5	1,268	51.6	1,349	56.3	2,741	40.6	2,653	49.6	2,628	53.6
Nottinghamshire	4,810	45.8	4,498	50.9	4,659	55.5	4,612	52.3	4,512	52.9	4,341	56.9	9,422	49.0	9,010	51.9	9,000	56.2
Rutland	234	63.7	233	62.2	249	65.1	229	64.2	231	66.7	239	71.5	463	63.9	464	64.4	488	68.2
<b>WEST MIDLANDS</b>	<b>32,727</b>	<b>53.0</b>	<b>31,365</b>	<b>56.0</b>	<b>31,342</b>	<b>59.6</b>	<b>31,911</b>	<b>58.3</b>	<b>30,662</b>	<b>57.6</b>	<b>30,778</b>	<b>63.1</b>	<b>64,638</b>	<b>55.6</b>	<b>62,027</b>	<b>56.8</b>	<b>62,120</b>	<b>61.3</b>
Birmingham	5,999	53.0	5,849	55.3	5,735	60.7	5,816	60.4	5,717	58.6	5,832	66.0	11,815	56.6	11,566	56.9	11,567	63.4
Coventry	1,724	61.2	1,657	53.3	1,727	58.2	1,712	56.3	1,644	58.2	1,697	62.0	3,436	53.7	3,301	55.8	3,424	60.1
Dudley	2,075	52.5	2,028	56.4	1,989	61.7	1,991	54.8	1,831	54.8	1,846	60.9	4,066	53.6	3,859	55.6	3,835	61.3
Herefordshire	946	61.7	953	64.2	915	60.7	983	68.0	880	61.6	919	69.9	1,929	64.9	1,833	63.0	1,834	65.3
Sandwell	1,928	38.0	1,783	46.2	1,735	48.2	1,755	45.0	1,674	47.3	1,690	52.6	3,683	41.3	3,457	46.7	3,425	50.4
Shropshire	1,613	65.7	1,571	64.7	1,623	66.3	1,614	66.4	1,538	67.1	1,551	70.0	3,227	66.0	3,109	65.9	3,174	68.1
Solihull	1,542	55.2	1,521	56.6	1,560	60.6	1,478	59.1	1,492	57.6	1,448	62.8	3,020	57.1	3,013	57.1	3,008	61.6
Staffordshire	5,067	56.1	4,713	60.1	4,709	59.9	4,982	61.7	4,714	60.1	4,759	62.1	10,049	58.9	9,427	60.1	9,468	61.0
Stoke-on-Trent	1,413	43.7	1,266	43.5	1,262	50.1	1,300	46.2	1,319	45.7	1,221	53.8	2,713	44.9	2,585	44.6	2,483	51.9
Telford and Wrekin	1,081	54.1	1,069	56.4	1,046	62.5	1,010	54.8	979	55.3	1,008	62.8	2,091	54.4	2,048	55.9	2,054	62.7
Walsall	1,894	47.5	1,853	49.0	1,782	52.9	1,870	50.6	1,721	51.8	1,696	56.8	3,764	49.0	3,574	50.4	3,478	54.8
Warwickshire	2,938	55.7	2,918	61.6	3,010	64.7	3,010	62.0	2,806	62.7	2,907	67.0	5,948	58.9	5,724	62.1	5,917	65.8
Wolverhampton	1,367	45.9	1,226	52.1	1,306	56.7	1,349	55.1	1,379	55.3	1,299	65.7	2,716	50.4	2,605	53.8	2,605	61.2
Worcestershire	3,140	56.1	2,958	55.8	2,943	62.0	3,041	61.3	2,968	58.9	2,905	63.7	6,181	58.7	5,926	57.4	5,848	62.9
<b>EAST OF ENGLAND</b>	<b>32,303</b>	<b>58.7</b>	<b>31,553</b>	<b>61.3</b>	<b>32,024</b>	<b>64.3</b>	<b>31,659</b>	<b>63.9</b>	<b>31,086</b>	<b>63.2</b>	<b>31,271</b>	<b>66.7</b>	<b>63,962</b>	<b>61.3</b>	<b>62,639</b>	<b>62.3</b>	<b>63,295</b>	<b>65.5</b>
Bedford <sup>a</sup>	-	-	865	62.3	870	63.0	-	-	863	63.2	860	64.2	-	-	1,728	62.7	1,730	63.6
Bedfordshire <sup>b</sup>	2,380	59.4	-	-	-	-	2,289	63.4	-	-	-	-	4,669	61.4	-	-	-	-
Cambridgeshire	2,975	60.8	2,799	64.3	2,975	69.1	2,857	65.8	2,806	67.2	2,871	70.5	5,832	63.3	5,605	65.7	5,846	69.8
Central Bedfordshire <sup>c</sup>	-	-	1,375	58.4	1,516	61.7	-	-	1,398	60.9	1,377	66.0	-	-	2,773	59.6	2,893	63.8
Essex	8,167	56.4	7,918	58.6	7,950	61.8	7,927	61.8	7,687	60.0	7,787	63.5	16,094	59.1	15,605	59.3	15,737	62.6
Hertfordshire	6,396	63.9	6,299	66.9	6,265	70.4	6,456	69.3	6,191	69.0	6,315	73.3	12,852	66.6	12,490	67.9	12,580	71.9
Luton	1,176	61.4	1,152	66.5	1,160	68.9	1,082	67.1	1,117	66.1	1,097	67.2	2,258	64.1	2,269	66.3	2,257	68.1
Norfolk	4,423	59.5	4,313	60.7	4,411	62.9	4,330	62.6	4,286	63.3	4,364	65.1	8,753	61.1	8,599	62.0	8,775	64.0
Peterborough	1,026	40.4	1,082	47.6	1,040	52.5	979	48.9	1,061	49.6	1,065	54.7	2,005	44.6	2,143	48.6	2,105	53.6
Southend-on-Sea	1,022	59.8	1,077	67.5	1,123	66.4	1,055	65.5	1,020	67.5	1,010	74.6	2,077	62.7	2,097	67.5	2,133	70.3
Suffolk	3,920	56.6	3,768	59.2	3,881	59.2	3,856	62.9	3,753	60.5	3,622	63.0	7,776	59.7	7,521	59.8	7,503	61.0
Thurrock	818	56.0	905	54.5	833	67.3	828	59.8	904	61.9	903	67.4	1,646	57.9	1,809	58.2	1,736	67.4
<b>LONDON</b>	<b>34,492</b>	<b>62.3</b>	<b>34,106</b>	<b>66.0</b>	<b>34,756</b>	<b>69.3</b>	<b>34,916</b>	<b>66.2</b>	<b>34,616</b>	<b>68.0</b>	<b>34,825</b>	<b>71.3</b>	<b>69,408</b>	<b>64.2</b>	<b>68,722</b>	<b>67.0</b>	<b>69,581</b>	<b>70.3</b>
<b>Inner London</b>	<b>10,213</b>	<b>60.0</b>	<b>10,152</b>	<b>63.7</b>	<b>10,353</b>	<b>67.7</b>	<b>10,846</b>	<b>63.8</b>	<b>10,884</b>	<b>65.9</b>	<b>10,901</b>	<b>70.3</b>	<b>21,059</b>	<b>62.0</b>	<b>21,036</b>	<b>64.9</b>	<b>21,254</b>	<b>69.1</b>
Camden	548	54.7	572	57.3	538	65.4	837	60.1	790	62.3	886	67.3	1,385	58.0	1,362	60.2	1,424	66.6
Hackney	302	46.0	443	69.8	394	67.3	787	60.5	802	70.8	831	72.4	1,089	56.5	1,245	70.4	1,225	70.8
Hammersmith and Fulham	503	67.6	451	76.5	449	79.5	514	73.5	504	81.5	488	85.7	1,017	70.6	955	79.2	937	82.7
Haringey	1,051	59.1	992	66.3	1,029	65.6	897	62.3	962	68.1	938	69.8	1,948	60.6	1,954	67.2	1,967	67.6
Islington	667	63.3	650	66.3	687	70.3	646	58.0	648	60.2	616	65.1	1,313	60.7	1,298	63.3	1,303	67.8
Kensington and Chelsea	301	75.1	298	77.5	293	80.9	243	59.7	250	62.8	241	75.9	544	68.2	548	70.8	534	78.7
Lambeth	545	64.0	624	61.4	640	65.0	741	67.7	795	69.3	833	72.1	1,286	66.2	1,419	65.8	1,473	69.0
Lewisham	961	59.3	962	60.8	1,036	58.9	1,025	57.2	985	61.2	977	59.8	1,986	58.2	1,947	61.0	2,013	59.3
Newham	1,479	63.0	1,508	63.6	1,562	68.6	1,549	69.8	1,623	64.2	1,518	69.6	3,028	66.5	3,131	63.9	3,080	69.1
Southwark	1,080	58.5	1,045	62.3	1,035	71.6	1,082	65.7	1,075	64.5	1,078	70.7	2,162	62.1	2,120	63.4	2,113	71.1
Tower Hamlets	1,235	56.7	1,121	57.3	1,184	64.4	1,084	57.2	1,067	59.0	1,070	65.0	2,319	56.9	2,188	58.1	2,254	64.7
Wandsworth	948	59.6	913	66.3	907	69.5	802	66.8	749	68.6	753	74.6	1,750	62.9	1,662	67.3	1,660	71.8
Westminster	593	56.7	573	60.0	599	68.4	639	70.3	634	73.8	672	82.1	1,232	63.7	1,207	67.3	1,271	75.7

	Boys						Girls						Total					
	2008		2009		2010		2008		2009		2010		2008		2009		2010	
	Number of eligible pupils	Percentage making expected progress	Number of eligible pupils	Percentage making expected progress	Number of eligible pupils	Percentage making expected progress	Number of eligible pupils	Percentage making expected progress	Number of eligible pupils	Percentage making expected progress	Number of eligible pupils	Percentage making expected progress	Number of eligible pupils	Percentage making expected progress	Number of eligible pupils	Percentage making expected progress	Number of eligible pupils	Percentage making expected progress
<b>Outer London</b>	<b>24,279</b>	<b>63.2</b>	<b>23,954</b>	<b>67.0</b>	<b>24,403</b>	<b>70.0</b>	<b>24,070</b>	<b>67.2</b>	<b>23,732</b>	<b>69.0</b>	<b>23,924</b>	<b>71.8</b>	<b>48,349</b>	<b>65.2</b>	<b>47,686</b>	<b>68.0</b>	<b>48,327</b>	<b>70.9</b>
Barking and Dagenham	959	48.8	991	56.4	1,069	61.3	979	49.8	928	55.4	951	60.6	1,938	49.3	1,919	55.9	2,020	60.9
Barnet	1,662	70.5	1,579	70.2	1,679	74.9	1,523	69.0	1,460	69.8	1,514	77.6	3,185	69.8	3,039	70.0	3,193	76.2
Bexley	1,610	58.1	1,597	63.6	1,606	63.6	1,508	64.9	1,495	67.6	1,551	69.3	3,118	61.4	3,092	65.5	3,157	66.4
Brent	1,208	72.8	1,270	76.3	1,320	78.3	1,260	76.3	1,257	76.4	1,284	75.9	2,468	74.6	2,527	76.3	2,604	77.1
Bromley	1,714	65.2	1,680	68.0	1,634	74.3	1,658	70.6	1,691	73.2	1,658	72.0	3,372	67.8	3,371	70.6	3,292	73.1
Croydon	1,702	57.9	1,630	63.1	1,659	68.5	1,844	64.0	1,792	65.2	1,805	67.3	3,546	61.1	3,422	64.2	3,464	67.8
Ealing	1,229	66.3	1,285	69.2	1,317	71.8	1,239	68.5	1,244	68.5	1,311	72.8	2,468	67.4	2,529	68.8	2,628	72.3
Enfield	1,878	57.3	1,737	63.7	1,740	64.9	1,693	63.0	1,691	64.0	1,707	69.4	3,571	60.0	3,428	63.9	3,447	67.2
Greenwich	1,071	51.1	1,020	53.0	1,062	56.5	1,152	55.7	1,199	56.5	1,087	64.2	2,223	53.5	2,219	54.9	2,149	60.4
Harrow	996	69.3	970	72.9	998	76.4	1,028	75.8	979	79.8	1,011	79.5	2,024	72.6	1,949	76.3	2,009	77.9
Havering	1,484	63.7	1,487	65.8	1,523	68.5	1,468	66.9	1,462	68.0	1,490	70.4	2,952	65.3	2,949	66.9	3,013	69.5
Hillingdon	1,486	58.3	1,388	62.1	1,440	64.3	1,427	59.4	1,375	60.8	1,427	65.8	2,913	58.4	2,763	61.5	2,867	65.1
Hounslow	1,201	58.3	1,177	66.2	1,221	69.5	1,265	65.6	1,182	70.9	1,196	69.7	2,466	62.0	2,359	68.5	2,417	69.6
Kington upon Thames	691	67.4	646	73.7	640	76.4	752	76.2	764	76.3	741	76.9	1,443	72.0	1,410	75.1	1,381	76.7
Merton	785	56.9	752	63.6	756	65.5	658	65.7	666	60.8	685	65.7	1,443	60.9	1,418	62.3	1,441	65.6
Redbridge	1,545	79.1	1,563	76.7	1,578	80.9	1,522	81.3	1,511	81.5	1,451	83.0	3,067	80.2	3,074	79.1	3,029	81.9
Richmond upon Thames	644	59.2	691	62.1	632	64.6	715	62.2	660	64.8	638	68.8	1,359	60.8	1,351	63.4	1,270	66.7
Sutton	1,263	75.1	1,299	78.5	1,300	77.8	1,201	76.5	1,209	78.7	1,262	80.7	2,464	75.8	2,508	78.6	2,562	79.2
Waltham Forest	1,151	59.5	1,192	63.2	1,229	67.1	1,178	64.5	1,167	68.6	1,155	70.6	2,329	62.0	2,359	65.8	2,384	68.8
<b>SOUTH EAST</b>	<b>45,105</b>	<b>59.8</b>	<b>43,169</b>	<b>62.8</b>	<b>44,390</b>	<b>66.5</b>	<b>43,811</b>	<b>63.8</b>	<b>42,286</b>	<b>64.4</b>	<b>42,709</b>	<b>67.7</b>	<b>88,916</b>	<b>61.7</b>	<b>85,455</b>	<b>63.6</b>	<b>87,099</b>	<b>67.1</b>
Bracknell Forest	544	57.0	503	61.0	543	65.2	503	64.4	562	62.3	509	65.6	1,047	60.6	1,065	61.7	1,052	65.4
Brighton and Hove	1,090	51.0	1,095	53.0	1,158	59.2	1,108	51.0	1,037	53.6	1,072	56.2	2,198	51.0	2,132	53.3	2,230	57.8
Buckinghamshire	2,826	69.6	2,689	73.9	2,873	75.9	2,756	72.6	2,678	77.4	2,650	76.6	5,582	71.1	5,367	75.7	5,523	76.2
East Sussex	2,661	54.6	2,531	60.5	2,678	65.3	2,615	61.7	2,442	63.6	2,508	66.8	5,276	58.1	4,973	62.0	5,186	66.0
Hampshire	7,073	62.6	6,827	64.7	6,933	67.6	6,742	66.6	6,710	65.8	6,706	68.7	13,815	64.5	13,537	65.2	13,639	68.2
Isle of Wight	761	52.4	755	49.3	755	57.5	752	56.9	709	53.5	735	59.9	1,513	54.7	1,464	51.3	1,490	58.7
Kent	8,331	57.9	8,077	61.7	8,214	64.5	8,076	61.9	7,902	62.9	7,983	66.2	16,407	59.9	15,979	62.3	16,197	65.3
Medway	1,643	54.7	1,610	58.3	1,645	61.5	1,761	61.4	1,655	62.6	1,658	65.8	3,404	58.2	3,265	60.5	3,303	63.6
Milton Keynes	1,304	51.3	1,270	60.4	1,323	60.7	1,264	56.3	1,196	57.9	1,268	64.0	2,568	53.7	2,466	59.2	2,591	62.3
Oxfordshire	3,283	58.8	3,099	63.4	3,096	68.8	3,094	64.1	2,899	63.7	3,018	68.2	6,377	61.4	5,998	63.6	6,114	68.5
Portsmouth	1,007	46.6	948	45.3	893	54.6	952	46.5	913	45.9	894	52.6	1,959	46.6	1,861	45.6	1,787	53.6
Reading	439	67.2	406	64.3	452	65.9	469	65.0	482	64.3	459	64.5	908	66.1	888	64.3	911	65.2
Slough	693	72.9	671	76.2	757	77.3	745	69.9	698	70.8	700	75.4	1,438	71.3	1,369	73.4	1,457	76.4
Southampton	1,053	51.2	1,002	49.2	948	54.3	1,227	54.6	1,136	54.0	1,045	59.2	2,280	53.0	2,138	51.7	1,993	56.9
Surrey	5,358	64.6	5,167	67.8	5,235	70.8	5,133	67.8	4,887	67.7	5,044	70.6	10,491	66.2	10,054	67.7	10,279	70.7
West Berkshire	1,048	62.0	938	68.4	985	69.9	957	66.4	984	67.1	938	68.7	2,005	64.1	1,922	67.7	1,923	69.3
West Sussex	4,221	57.1	3,963	58.0	4,217	63.1	4,050	61.8	3,902	62.6	3,948	67.0	8,271	59.4	7,865	60.3	8,165	65.0
Windsor and Maidenhead	823	67.3	765	70.3	776	73.1	742	75.2	701	72.6	707	77.1	1,565	71.1	1,466	71.4	1,483	75.0
Wokingham	947	67.9	853	71.6	909	74.4	865	72.0	793	74.0	867	76.6	1,812	69.9	1,646	72.8	1,776	75.5
<b>SOUTH WEST</b>	<b>28,117</b>	<b>56.0</b>	<b>27,726</b>	<b>60.5</b>	<b>27,761</b>	<b>63.0</b>	<b>27,339</b>	<b>61.0</b>	<b>26,893</b>	<b>61.3</b>	<b>27,070</b>	<b>64.9</b>	<b>55,456</b>	<b>58.4</b>	<b>54,619</b>	<b>60.9</b>	<b>54,831</b>	<b>63.9</b>
Bath and North East Somerset	991	62.4	1,019	65.8	1,039	68.1	1,118	67.4	1,087	66.6	1,137	66.4	2,109	65.1	2,106	66.2	2,176	67.2
Bournemouth	864	52.7	824	57.3	842	62.1	846	56.0	879	62.5	801	71.3	1,710	54.3	1,703	60.0	1,643	66.6
Bristol, City of	1,500	42.1	1,454	47.5	1,420	54.0	1,408	45.3	1,450	49.7	1,376	56.3	2,908	43.6	2,904	48.6	2,796	55.1
Cornwall	3,000	49.3	2,940	57.2	2,937	60.0	2,915	52.8	2,901	56.4	2,824	61.6	5,915	51.0	5,841	56.8	5,761	60.8
Devon	3,792	56.4	3,870	61.0	3,776	62.2	3,698	63.4	3,624	62.9	3,670	66.7	7,490	59.8	7,494	61.9	7,446	64.4
Dorset	2,206	62.1	2,107	64.3	2,169	66.3	2,150	66.0	2,113	65.5	2,088	69.7	4,356	64.0	4,220	64.9	4,257	68.0
Gloucestershire	3,446	63.2	3,452	66.0	3,449	68.7	3,249	70.1	3,187	69.6	3,262	70.9	6,695	66.6	6,639	67.8	6,711	69.8
Isles of Scilly	13	100.0	5	80.0	10	100.0	10	100.0	9	88.9	12	100.0	23	100.0	14	85.7	22	100.0
North Somerset	1,159	56.8	1,119	61.7	1,094	60.6	1,103	58.3	1,066	53.7	1,103	60.9	2,262	57.5	2,185	57.8	2,197	60.8
Plymouth	1,473	51.1	1,422	54.6	1,451	57.3	1,492	53.4	1,421	54.5	1,441	56.6	2,965	52.2	2,843	54.6	2,892	57.0
Poole	788	66.0	841	62.5	835	64.2	852	69.6	793	70.0	790	67.0	1,640	67.9	1,634	66.2	1,625	65.5
Somerset	2,846	52.5	2,856	59.4	2,800	61.3	2,803	60.1	2,667	60.3	2,758	63.7	5,649	56.3	5,523	59.8	5,558	62.5
South Gloucestershire	1,642	53.0	1,598	60.2	1,658	65.6	1,438	59.1	1,430	58.0	1,474	64.5	3,080	55.9	3,028	59.1	3,132	65.0
Swindon	1,081	45.7	1,087	50.0	1,033	53.6	1,054	49.9	1,054	51.1	1,053	54.3	2,135	47.8	2,141	50.5	2,086	54.0
Torbay	780	56.2	738	63.4	736	63.6	733	55.8	704	61.6	728	65.5	1,513	56.0	1,442	62.6	1,464	64.5
Wiltshire	2,536	64.0	2,394	66.6	2,512	67.4	2,470	69.1	2,508	66.2	2,553	67.7	5,006	66.5	4,902	66.4	5,065	67.6
<b>TOTAL (Maintained mainstream sector)<sup>1</sup></b>	<b>288,733</b>	<b>55.5</b>	<b>278,444</b>	<b>58.6</b>	<b>279,006</b>	<b>62.3</b>	<b>282,569</b>	<b>59.8</b>	<b>273,374</b>	<b>60.1</b>	<b>273,481</b>	<b>64.6</b>	<b>571,302</b>	<b>57.6</b>	<b>551,818</b>	<b>59.3</b>		

Table 4: Percentage of pupils in maintained schools making expected progress in English between Key Stage 2 and Key Stage 4, by Local Authority and Region<sup>1</sup>

Year: 2008 - 2010<sup>2</sup>

Coverage: England<sup>3,4</sup>

This table was updated on 20 June 2011 to correct errors that were present in the figures for the London regional sub-totals for columns relating to 2008. The grand totals across all regions were erroneously duplicated in these cells.

	Boys						Girls						Total					
	2008		2009		2010		2008		2009		2010		2008		2009		2010	
	Number of eligible pupils	Percentage making expected progress	Number of eligible pupils	Percentage making expected progress	Number of eligible pupils	Percentage making expected progress	Number of eligible pupils	Percentage making expected progress	Number of eligible pupils	Percentage making expected progress	Number of eligible pupils	Percentage making expected progress	Number of eligible pupils	Percentage making expected progress	Number of eligible pupils	Percentage making expected progress	Number of eligible pupils	Percentage making expected progress
<b>NORTH EAST</b>	<b>16,217</b>	<b>52.8</b>	<b>15,344</b>	<b>55.8</b>	<b>14,785</b>	<b>60.2</b>	<b>15,529</b>	<b>64.6</b>	<b>14,865</b>	<b>66.2</b>	<b>14,273</b>	<b>70.3</b>	<b>31,746</b>	<b>58.6</b>	<b>30,209</b>	<b>60.9</b>	<b>29,058</b>	<b>65.2</b>
Darlington	640	52.8	610	53.1	580	62.1	581	62.3	555	65.9	535	71.4	1,221	57.3	1,165	59.2	1,115	66.5
Durham	3,213	53.3	2,896	57.8	2,795	65.4	3,016	64.8	2,786	68.8	2,687	73.8	6,229	58.9	5,682	63.2	5,462	69.5
Gateshead	1,138	57.7	1,086	60.3	1,038	60.5	1,105	65.3	1,046	68.0	1,049	71.8	2,243	61.5	2,132	64.1	2,087	68.2
Hartlepool	637	44.0	592	51.9	636	50.8	644	53.1	640	61.9	603	59.4	1,281	48.6	1,232	57.1	1,239	55.0
Middlesbrough	883	42.5	859	44.8	834	52.4	869	52.6	845	56.1	824	60.8	1,752	47.5	1,704	50.4	1,658	56.6
Newcastle upon Tyne	1,419	52.7	1,333	47.3	1,271	59.3	1,246	62.0	1,304	62.1	1,174	67.9	2,665	57.0	2,637	54.6	2,445	63.4
North Tyneside	1,173	62.3	1,172	64.0	1,084	64.2	1,156	72.7	1,097	72.4	1,041	71.7	2,329	67.5	2,269	68.0	2,125	67.9
Northumberland	1,965	58.8	1,889	61.9	1,786	64.7	1,881	72.1	1,840	70.1	1,756	75.6	3,846	65.3	3,729	65.9	3,542	70.1
Redcar and Cleveland	995	47.1	959	55.5	982	56.6	1,033	67.7	937	66.6	945	67.7	2,028	57.6	1,896	61.0	1,927	62.1
South Tyneside	1,026	55.2	950	55.1	898	66.4	906	65.0	945	66.5	867	73.1	1,932	59.8	1,895	60.7	1,765	69.7
Stockton-on-Tees	1,245	50.5	1,240	54.0	1,187	53.5	1,234	63.9	1,163	66.2	1,097	69.8	2,479	57.2	2,403	59.9	2,284	61.3
Sunderland	1,883	48.3	1,758	53.5	1,694	55.3	1,858	61.9	1,707	62.0	1,715	68.1	3,741	55.0	3,465	57.7	3,409	61.7
<b>NORTH WEST</b>	<b>43,919</b>	<b>56.8</b>	<b>41,225</b>	<b>58.1</b>	<b>40,663</b>	<b>63.4</b>	<b>42,161</b>	<b>68.5</b>	<b>40,333</b>	<b>69.0</b>	<b>39,517</b>	<b>74.4</b>	<b>85,980</b>	<b>62.6</b>	<b>81,558</b>	<b>63.5</b>	<b>80,180</b>	<b>68.8</b>
Blackburn with Darwen	944	57.2	897	56.4	909	60.6	891	71.3	866	71.2	846	74.2	1,835	64.0	1,763	63.7	1,755	67.2
Blackpool	800	50.1	782	54.3	809	63.0	838	64.9	821	67.7	762	77.3	1,638	57.7	1,603	61.2	1,571	70.0
Bolton	1,868	49.5	1,747	50.3	1,723	57.3	1,752	66.8	1,753	62.9	1,729	70.9	3,620	57.9	3,500	56.6	3,452	64.1
Bury	1,205	65.9	1,103	71.9	1,120	72.7	1,149	76.8	1,073	81.0	1,061	80.9	2,354	71.2	2,176	76.4	2,181	76.7
Cheshire <sup>5</sup>	4,159	59.2	-	-	-	-	4,133	72.3	-	-	-	-	8,292	65.7	-	-	-	-
Cheshire West and Chester <sup>6</sup>	-	-	2,051	56.7	2,068	65.6	-	-	1,838	70.0	1,853	77.1	-	-	3,889	63.0	3,921	71.0
Cheshire East <sup>7</sup>	-	-	1,939	61.3	1,879	68.1	-	-	1,998	74.2	2,000	78.2	-	-	3,937	67.8	3,879	73.3
Cumbria	3,306	55.1	3,045	56.9	3,084	60.8	3,046	67.5	2,946	66.7	2,935	72.6	6,352	61.0	5,991	61.7	6,019	66.6
Halton	803	57.0	786	48.6	767	59.5	819	69.6	738	61.1	757	67.9	1,622	63.4	1,524	54.7	1,524	63.6
Knowsley	997	40.2	849	38.9	858	43.9	913	43.2	787	47.0	777	45.7	1,910	41.6	1,636	42.8	1,635	44.8
Lancashire	7,148	61.5	6,857	61.7	6,767	64.6	6,860	73.4	6,575	73.1	6,469	77.7	14,008	67.3	13,432	67.3	13,236	71.0
Liverpool	2,716	53.8	2,550	53.8	2,449	65.7	2,717	61.1	2,680	66.7	2,560	72.9	5,433	57.5	5,230	60.4	5,009	69.4
Manchester	2,331	49.3	2,137	51.1	2,084	59.8	2,242	57.5	2,210	58.1	2,125	65.9	4,573	53.4	4,347	54.6	4,209	62.9
Oldham	1,649	54.9	1,503	57.4	1,502	61.6	1,463	68.1	1,454	66.9	1,441	73.8	3,112	61.2	2,957	62.0	2,943	67.6
Rochdale	1,302	52.8	1,362	57.3	1,277	58.7	1,319	66.7	1,172	70.5	1,209	73.4	2,621	59.8	2,534	63.4	2,486	65.8
Salford	1,205	49.3	1,119	53.7	1,051	60.0	1,215	58.9	1,169	65.4	1,108	70.4	2,420	54.1	2,288	59.7	2,159	65.4
Sefton	1,859	59.5	1,776	61.6	1,632	63.9	1,765	72.2	1,715	73.9	1,646	75.5	3,624	65.7	3,491	67.7	3,278	69.7
St. Helens	1,108	49.6	1,088	51.7	1,002	58.4	1,122	66.8	1,056	64.6	993	72.8	2,230	58.3	2,144	58.0	1,995	65.6
Stockport	1,673	62.0	1,560	64.0	1,541	68.3	1,716	71.7	1,432	69.8	1,427	78.2	3,389	66.9	2,992	66.7	2,968	73.1
Tameside	1,562	49.7	1,449	54.2	1,475	55.5	1,565	58.1	1,482	64.0	1,402	65.8	3,127	53.9	2,931	59.2	2,877	60.5
Trafford	1,536	73.2	1,431	71.0	1,470	74.8	1,400	80.6	1,404	77.4	1,348	82.3	2,936	76.7	2,835	74.1	2,818	78.4
Warrington	1,340	61.8	1,302	66.7	1,303	69.3	1,210	73.1	1,230	76.1	1,189	78.5	2,550	67.2	2,532	71.3	2,492	73.7
Wigan	2,148	55.0	1,895	57.0	1,892	64.4	2,089	70.8	1,986	70.2	1,928	76.5	4,237	62.8	3,881	63.8	3,820	70.5
Wirral	2,160	60.1	1,997	61.2	2,001	65.3	1,937	72.5	1,948	69.7	1,952	79.1	4,097	66.0	3,945	65.4	3,953	72.1
<b>YORKSHIRE &amp; HUMBER</b>	<b>31,686</b>	<b>53.1</b>	<b>30,549</b>	<b>55.8</b>	<b>29,816</b>	<b>59.7</b>	<b>30,751</b>	<b>65.9</b>	<b>28,947</b>	<b>67.4</b>	<b>29,098</b>	<b>72.0</b>	<b>62,437</b>	<b>59.4</b>	<b>59,496</b>	<b>61.4</b>	<b>58,914</b>	<b>65.8</b>
Barnsley	1,487	46.3	1,363	55.3	1,296	52.0	1,343	62.5	1,252	64.1	1,244	65.9	2,830	54.0	2,615	59.5	2,540	58.8
Bradford	2,995	49.6	2,934	51.4	2,848	55.6	2,890	62.4	2,771	65.2	2,802	68.6	5,885	55.9	5,705	58.1	5,650	62.0
Calderdale	1,294	56.3	1,365	58.2	1,335	63.6	1,346	68.9	1,229	69.1	1,246	74.7	2,640	62.7	2,594	63.3	2,581	69.0
Doncaster	1,890	45.7	1,897	48.8	1,743	54.2	1,837	60.0	1,726	59.9	1,767	69.4	3,727	52.8	3,623	54.1	3,510	61.9
East Riding of Yorkshire	2,055	60.2	2,005	61.8	1,972	65.2	1,993	72.6	1,966	72.4	1,943	77.5	4,048	66.3	3,971	67.0	3,915	71.3
Kingston upon Hull, City of	1,581	39.0	1,447	42.8	1,382	52.8	1,481	51.9	1,392	57.7	1,353	65.0	3,062	45.2	2,839	50.1	2,735	58.9
Kirklees	2,405	55.7	2,346	58.9	2,310	60.7	2,347	68.0	2,251	70.0	2,199	73.3	4,752	61.8	4,597	64.3	4,509	66.9
Leeds	4,265	54.4	4,135	52.0	4,026	56.2	4,158	66.1	3,873	64.0	3,917	68.4	8,423	60.2	8,008	57.8	7,943	62.2
North East Lincolnshire	1,135	46.1	976	55.5	969	60.6	1,040	61.3	949	62.9	994	71.4	2,175	53.4	1,925	59.2	1,963	66.1
North Lincolnshire	1,125	49.3	1,022	52.7	990	57.0	1,037	64.0	964	65.6	996	68.0	2,162	56.4	1,986	59.0	1,986	62.5
North Yorkshire	3,613	62.2	3,534	66.0	3,470	66.5	3,615	71.9	3,317	75.5	3,348	78.5	7,228	67.0	6,851	70.6	6,818	72.4
Rotherham	1,926	50.4	1,835	55.4	1,798	59.6	1,853	62.7	1,790	69.4	1,795	72.0	3,779	56.4	3,625	62.3	3,593	65.8
Sheffield	2,915	50.5	2,839	53.5	2,781	59.1	2,801	65.4	2,759	65.1	2,713	70.3	5,716	57.8	5,598	59.2	5,494	64.6
Wakefield	2,092	58.4	1,987	58.3	2,032	65.5	2,075	70.1	1,883	71.9	1,914	78.0	4,167	64.2	3,870	64.9	3,946	71.6
York	908	62.6	864	64.5	864	65.5	935	73.3	825	75.4	867	75.0	1,843	68.0	1,689	69.8	1,731	70.2



	Boys						Girls						Total					
	2008		2009		2010		2008		2009		2010		2008		2009		2010	
	Number of eligible pupils	Percentage making expected progress	Number of eligible pupils	Percentage making expected progress	Number of eligible pupils	Percentage making expected progress	Number of eligible pupils	Percentage making expected progress	Number of eligible pupils	Percentage making expected progress	Number of eligible pupils	Percentage making expected progress	Number of eligible pupils	Percentage making expected progress	Number of eligible pupils	Percentage making expected progress	Number of eligible pupils	Percentage making expected progress
<b>EAST MIDLANDS</b>	<b>26,626</b>	<b>57.0</b>	<b>25,734</b>	<b>58.6</b>	<b>25,754</b>	<b>62.7</b>	<b>25,581</b>	<b>69.5</b>	<b>24,588</b>	<b>70.8</b>	<b>24,887</b>	<b>75.0</b>	<b>52,207</b>	<b>63.2</b>	<b>50,322</b>	<b>64.6</b>	<b>50,641</b>	<b>68.8</b>
Derby	1,497	59.7	1,409	57.3	1,412	64.7	1,481	68.9	1,358	67.6	1,398	74.2	2,978	64.3	2,767	62.4	2,810	69.4
Derbyshire	4,650	54.4	4,526	57.8	4,430	60.2	4,554	69.0	4,236	70.1	4,267	73.5	9,204	61.6	8,762	63.8	8,697	66.7
Leicester	1,695	58.6	1,658	57.1	1,703	61.8	1,522	70.2	1,613	71.9	1,652	78.2	3,217	64.1	3,271	64.4	3,355	69.9
Leicestershire	3,923	65.3	3,702	64.6	3,764	66.3	3,667	76.8	3,564	75.4	3,586	78.8	7,590	70.8	7,266	69.9	7,350	72.4
Lincolnshire	4,180	61.7	4,207	63.9	4,237	68.7	4,119	72.3	4,042	74.6	4,188	79.5	8,299	66.9	8,249	69.1	8,425	74.0
Northamptonshire	4,208	56.5	4,067	59.9	3,933	63.2	3,963	70.0	3,768	72.8	3,838	75.8	8,171	63.1	7,835	66.1	7,771	69.5
Nottingham	1,387	47.2	1,405	46.3	1,304	53.6	1,397	58.6	1,252	62.0	1,360	67.9	2,784	52.9	2,657	53.7	2,664	60.9
Nottinghamshire	4,852	50.1	4,527	53.1	4,723	58.5	4,649	64.1	4,525	65.4	4,360	69.4	9,501	57.0	9,052	59.3	9,083	63.7
Rutland	234	71.4	233	65.2	248	64.1	229	80.8	230	78.3	238	81.9	463	76.0	463	71.7	486	72.8
<b>WEST MIDLANDS</b>	<b>33,573</b>	<b>55.5</b>	<b>32,167</b>	<b>57.8</b>	<b>32,121</b>	<b>63.0</b>	<b>32,277</b>	<b>69.3</b>	<b>31,009</b>	<b>69.6</b>	<b>31,060</b>	<b>76.4</b>	<b>65,850</b>	<b>62.3</b>	<b>63,176</b>	<b>63.6</b>	<b>63,181</b>	<b>69.6</b>
Birmingham	6,229	54.9	6,022	57.1	5,941	63.0	5,911	70.5	5,788	70.3	5,899	77.4	12,140	62.5	11,810	63.6	11,540	70.9
Coventry	1,779	49.5	1,729	56.8	1,778	64.0	1,728	62.0	1,674	67.6	1,712	72.4	3,507	55.6	3,403	62.1	3,490	68.1
Dudley	2,136	60.1	2,074	62.4	2,037	66.9	2,010	70.9	1,845	71.4	1,862	77.5	4,146	65.3	3,919	66.6	3,899	71.9
Herefordshire	972	57.1	969	62.6	933	63.9	992	72.6	885	70.2	934	79.8	1,964	64.9	1,854	66.2	1,867	71.8
Sandwell	1,951	43.9	1,798	48.6	1,745	52.9	1,772	61.3	1,681	60.5	1,691	71.3	3,723	52.2	3,479	54.4	3,436	62.0
Shropshire	1,623	61.4	1,570	63.8	1,636	62.2	1,628	71.7	1,540	73.6	1,555	76.3	3,251	66.6	3,110	68.6	3,191	69.1
Solihull	1,565	66.6	1,545	61.1	1,599	69.6	1,482	77.3	1,501	75.9	1,457	79.1	3,047	71.8	3,046	68.4	3,056	74.1
Staffordshire	5,184	58.6	4,829	60.0	4,829	64.3	5,066	72.2	4,797	72.1	4,813	78.5	10,250	65.3	9,626	66.0	9,642	71.4
Stoke-on-Trent	1,448	50.1	1,302	54.0	1,313	60.7	1,317	63.4	1,335	64.1	1,239	72.7	2,765	56.4	2,637	59.1	2,552	66.5
Telford and Wrekin	1,098	53.0	1,096	54.7	1,080	59.9	1,023	65.4	990	62.5	1,021	72.6	2,121	59.0	2,086	58.4	2,101	66.1
Walsall	1,937	47.8	1,890	51.3	1,810	58.5	1,874	62.1	1,737	64.0	1,711	69.1	3,811	54.8	3,627	57.4	3,521	63.6
Warwickshire	3,004	61.3	3,008	61.9	3,071	67.2	3,030	72.3	2,836	72.8	2,935	80.2	6,034	66.8	5,844	67.2	6,006	73.6
Wolverhampton	1,422	48.0	1,262	53.8	1,322	56.4	1,368	64.5	1,397	66.1	1,304	74.5	2,790	56.1	2,659	60.3	2,626	65.4
Worcestershire	3,225	56.2	3,073	56.4	3,027	61.5	3,076	71.4	3,003	70.4	2,927	76.8	6,301	63.7	6,076	63.3	5,954	69.0
<b>EAST OF ENGLAND</b>	<b>32,933</b>	<b>58.2</b>	<b>32,182</b>	<b>60.4</b>	<b>32,629</b>	<b>64.3</b>	<b>31,980</b>	<b>70.7</b>	<b>31,425</b>	<b>71.2</b>	<b>31,590</b>	<b>76.3</b>	<b>64,913</b>	<b>64.4</b>	<b>63,607</b>	<b>65.8</b>	<b>64,219</b>	<b>70.2</b>
Bedford <sup>a</sup>	-	-	891	59.3	899	62.6	-	-	893	71.3	878	75.5	-	-	1,784	65.3	1,777	69.0
Bedfordshire <sup>b</sup>	2,447	59.2	-	-	-	-	2,315	72.1	-	-	-	-	4,762	65.5	-	-	-	-
Cambridgeshire	2,994	60.2	2,868	63.7	3,027	65.3	2,875	71.1	2,835	74.4	2,904	77.8	5,869	65.5	5,703	69.0	5,931	71.4
Central Bedfordshire <sup>c</sup>	-	-	1,402	57.2	1,539	60.2	-	-	1,419	69.8	1,405	75.4	-	-	2,821	63.6	2,944	67.5
Essex	8,312	55.4	8,067	58.0	8,073	62.5	7,994	67.1	7,766	68.7	7,848	74.8	16,306	61.1	15,833	63.3	15,921	68.6
Hertfordshire	6,550	65.8	6,458	66.1	6,415	70.4	6,527	76.2	6,257	75.1	6,385	80.6	13,077	70.9	12,715	70.5	12,800	75.5
Luton	1,186	53.4	1,151	59.0	1,151	67.4	1,086	64.7	1,107	67.1	1,100	74.5	2,272	58.8	2,258	63.0	2,251	70.9
Norfolk	4,499	55.2	4,377	58.2	4,493	60.0	4,384	70.3	4,315	70.7	4,403	73.4	8,883	62.6	8,692	64.4	8,896	66.6
Peterborough	1,054	47.2	1,105	50.8	1,078	56.7	1,002	60.3	1,088	58.7	1,080	68.9	2,056	53.6	2,193	54.7	2,158	62.8
Southend-on-Sea	1,071	62.0	1,118	68.4	1,158	71.2	1,067	75.6	1,034	77.8	1,022	80.7	2,138	68.8	2,152	72.9	2,180	75.7
Suffolk	3,992	57.4	3,818	59.0	3,953	63.1	3,895	72.3	3,805	72.4	3,858	76.1	7,887	64.8	7,623	65.7	7,611	69.3
Thurrock	828	54.5	927	57.7	843	65.0	835	66.0	906	69.0	907	77.2	1,663	60.3	1,833	63.3	1,750	71.3
<b>LONDON</b>	<b>34,961</b>	<b>62.8</b>	<b>34,300</b>	<b>65.7</b>	<b>34,986</b>	<b>69.9</b>	<b>35,059</b>	<b>73.9</b>	<b>34,691</b>	<b>75.5</b>	<b>34,915</b>	<b>79.3</b>	<b>70,020</b>	<b>68.4</b>	<b>68,991</b>	<b>70.6</b>	<b>69,901</b>	<b>74.6</b>
<b>Inner London</b>	<b>10,402</b>	<b>59.8</b>	<b>10,276</b>	<b>63.0</b>	<b>10,482</b>	<b>66.3</b>	<b>10,899</b>	<b>71.7</b>	<b>10,925</b>	<b>73.8</b>	<b>10,920</b>	<b>78.0</b>	<b>21,301</b>	<b>65.9</b>	<b>21,201</b>	<b>68.6</b>	<b>21,402</b>	<b>72.3</b>
Camden	564	56.2	583	65.5	556	61.0	845	76.7	799	76.1	894	80.2	1,409	68.5	1,382	71.6	1,450	72.8
Hackney	324	53.1	465	62.8	418	66.3	796	73.7	803	73.7	836	83.0	1,120	67.8	1,268	69.7	1,254	77.4
Hammersmith and Fulham	516	61.8	463	68.5	465	78.5	521	81.2	511	83.6	491	91.2	1,037	71.6	974	76.4	956	85.0
Haringey	1,066	59.6	1,005	61.6	1,030	63.8	897	70.5	972	72.4	941	75.2	1,963	64.5	1,977	66.9	1,971	69.3
Islington	667	59.2	651	69.9	687	67.4	647	61.7	657	68.8	623	71.6	1,314	60.4	1,308	69.3	1,310	69.4
Kensington and Chelsea	307	77.5	302	74.8	295	79.0	249	75.5	253	73.5	241	80.9	556	76.6	555	74.2	536	79.9
Lambeth	578	61.1	648	59.0	677	60.3	756	70.4	789	77.1	837	74.8	1,334	66.3	1,437	68.9	1,514	68.3
Lewisham	987	64.2	988	64.3	1,043	60.9	1,037	72.1	989	71.5	983	73.4	2,024	68.3	1,977	67.9	2,026	67.0
Newham	1,461	59.2	1,468	63.3	1,529	62.6	1,612	74.6	1,612	73.3	1,491	76.1	3,005	67.1	3,080	68.5	3,020	69.3
Southwark	1,106	57.1	1,070	59.5	1,060	69.4	1,082	65.5	1,085	71.1	1,070	78.1	2,188	61.2	2,155	65.3	2,130	73.8
Tower Hamlets	1,230	57.6	1,122	55.6	1,179	65.7	1,082	66.6	1,066	70.4	1,076	71.8	2,312	61.9	2,188	62.8	2,255	68.6
Wandsworth	1,008	62.6	945	66.8	942	71.7	805	72.9	761	75.8	764	79.8	1,813	67.2	1,706	70.8	1,706	75.3
Westminster	588	55.4	566	61.0	601	72.0	638	77.1	628	79.9	673	89.6	1,226	66.7	1,194	70.9	1,274	81.3

	Boys						Girls						Total					
	2008		2009		2010		2008		2009		2010		2008		2009		2010	
	Number of eligible pupils	Percentage making expected progress	Number of eligible pupils	Percentage making expected progress	Number of eligible pupils	Percentage making expected progress	Number of eligible pupils	Percentage making expected progress	Number of eligible pupils	Percentage making expected progress	Number of eligible pupils	Percentage making expected progress	Number of eligible pupils	Percentage making expected progress	Number of eligible pupils	Percentage making expected progress	Number of eligible pupils	Percentage making expected progress
<b>Outer London</b>	<b>24,559</b>	<b>64.1</b>	<b>24,024</b>	<b>66.9</b>	<b>24,504</b>	<b>71.4</b>	<b>24,160</b>	<b>74.8</b>	<b>23,766</b>	<b>76.2</b>	<b>23,995</b>	<b>79.9</b>	<b>48,719</b>	<b>69.4</b>	<b>47,790</b>	<b>71.5</b>	<b>48,499</b>	<b>75.6</b>
Barking and Dagenham	952	56.4	988	59.5	1,063	66.5	976	64.4	936	67.7	950	73.3	1,928	60.5	1,924	63.5	2,013	69.7
Barnet	1,662	77.6	1,572	74.9	1,679	78.6	1,523	82.3	1,472	82.5	1,514	86.3	3,185	79.8	3,044	78.5	3,193	82.2
Bexley	1,644	60.1	1,601	63.9	1,627	66.5	1,518	68.2	1,502	74.3	1,558	76.3	3,162	64.0	3,103	68.9	3,185	71.3
Brent	1,199	65.5	1,226	72.1	1,305	74.6	1,257	82.8	1,248	79.6	1,276	82.5	2,456	74.3	2,474	75.9	2,581	78.5
Bromley	1,759	67.8	1,722	71.8	1,661	77.7	1,681	76.3	1,714	78.1	1,686	77.2	3,440	72.0	3,436	74.9	3,347	77.4
Croydon	1,748	53.1	1,655	62.0	1,686	64.8	1,855	68.9	1,807	71.1	1,807	76.3	3,603	61.3	3,462	66.8	3,493	70.7
Ealing	1,231	67.4	1,294	70.2	1,314	74.7	1,233	78.8	1,252	79.0	1,321	83.3	2,464	73.1	2,546	74.5	2,635	79.0
Enfield	1,906	61.9	1,761	63.3	1,750	69.8	1,717	69.0	1,673	74.0	1,699	80.9	3,623	65.2	3,434	68.5	3,449	75.3
Greenwich	1,071	55.1	1,016	58.3	1,054	68.6	1,161	71.0	1,191	68.6	1,076	75.8	2,232	63.4	2,207	63.8	2,130	72.3
Harrow	1,006	69.8	950	72.7	979	74.4	1,027	82.4	980	81.9	1,013	83.4	2,033	76.1	1,930	77.4	1,992	79.0
Havering	1,502	63.6	1,503	63.1	1,524	65.7	1,471	72.9	1,470	74.1	1,506	75.0	2,973	68.2	2,973	68.5	3,030	70.3
Hillingdon	1,494	55.2	1,372	60.9	1,437	65.7	1,424	66.0	1,352	70.5	1,422	78.9	2,918	60.5	2,724	65.7	2,859	72.3
Hounslow	1,217	61.9	1,162	68.1	1,214	72.0	1,260	76.7	1,181	77.4	1,192	84.3	2,477	69.4	2,343	72.8	2,406	78.1
Kingston upon Thames	704	68.8	658	72.9	650	77.4	750	81.2	768	84.8	738	84.0	1,454	75.2	1,426	79.3	1,388	80.9
Merton	789	61.0	758	67.4	761	65.0	666	70.3	662	71.5	683	70.9	1,455	65.2	1,420	69.3	1,444	67.8
Redbridge	1,550	73.3	1,546	74.6	1,574	81.4	1,524	83.7	1,498	84.6	1,458	86.1	3,074	78.5	3,044	79.5	3,032	83.7
Richmond upon Thames	649	60.1	687	62.6	630	66.8	726	74.0	662	77.3	646	79.1	1,375	67.4	1,349	69.8	1,276	73.0
Sutton	1,288	74.8	1,331	72.1	1,323	75.8	1,203	81.1	1,212	79.0	1,271	82.9	2,491	77.9	2,543	75.4	2,594	79.3
Waltham Forest	1,188	61.8	1,222	59.3	1,273	67.9	1,188	74.5	1,186	73.1	1,179	79.3	2,376	68.1	2,408	66.1	2,452	73.4
<b>SOUTH EAST</b>	<b>46,049</b>	<b>61.8</b>	<b>44,113</b>	<b>62.2</b>	<b>45,323</b>	<b>66.4</b>	<b>44,339</b>	<b>72.8</b>	<b>42,744</b>	<b>73.0</b>	<b>43,151</b>	<b>77.3</b>	<b>90,388</b>	<b>67.2</b>	<b>86,857</b>	<b>67.5</b>	<b>88,474</b>	<b>71.7</b>
Bracknell Forest	546	59.5	502	56.4	546	66.1	508	69.7	569	63.4	511	76.7	1,054	64.4	1,071	60.1	1,057	71.2
Brighton and Hove	1,149	54.1	1,152	54.5	1,186	60.3	1,129	66.3	1,057	69.2	1,097	73.3	2,278	60.2	2,209	61.5	2,283	66.5
Buckinghamshire	2,879	70.0	2,770	69.7	2,949	71.7	2,789	78.5	2,709	81.5	2,678	81.6	5,668	74.2	5,479	75.5	5,627	76.4
East Sussex	2,735	54.3	2,592	55.9	2,722	61.2	2,650	65.8	2,477	70.4	2,532	75.7	5,385	60.0	5,069	63.0	5,254	68.2
Hampshire	7,205	64.6	6,985	64.5	7,070	66.8	6,807	75.6	6,759	75.4	6,758	78.5	14,012	69.9	13,744	69.8	13,828	72.5
Isle of Wight	778	55.7	782	51.7	762	56.4	758	70.7	715	65.6	744	72.2	1,536	63.1	1,497	58.3	1,506	64.2
Kent	8,513	57.4	8,280	59.8	8,399	65.2	8,169	70.4	7,992	69.7	8,035	75.7	16,682	63.8	16,272	64.7	16,434	70.4
Medway	1,666	61.0	1,638	66.5	1,680	63.6	1,783	71.2	1,675	72.1	1,675	72.7	3,449	66.3	3,313	69.3	3,355	68.1
Milton Keynes	1,333	57.1	1,287	64.0	1,378	64.5	1,280	67.2	1,210	69.9	1,281	76.5	2,613	62.0	2,497	66.9	2,659	70.3
Oxfordshire	3,352	62.0	3,110	61.9	3,142	67.1	3,121	72.2	2,928	72.4	3,051	74.5	6,473	66.9	6,038	67.0	6,193	70.7
Portsmouth	1,038	52.5	994	49.8	954	57.2	988	63.0	933	62.8	911	67.4	2,026	57.6	1,927	56.1	1,865	62.2
Reading	447	66.2	414	65.5	455	66.4	465	68.8	467	67.7	457	77.7	912	67.5	881	66.6	912	72.0
Slough	696	71.3	681	69.8	769	75.2	746	79.9	699	81.7	705	85.5	1,442	75.7	1,380	75.8	1,474	80.1
Southampton	1,077	52.8	1,019	52.0	972	52.5	1,233	70.4	1,146	71.1	1,050	72.0	2,310	62.2	2,165	62.1	2,022	62.6
Surrey	5,474	65.5	5,284	65.2	5,360	69.3	5,219	75.7	4,949	75.1	5,131	80.2	10,693	70.5	10,233	70.0	10,491	74.6
West Berkshire	1,072	65.4	956	63.0	1,000	73.1	965	73.9	996	71.6	956	79.6	2,037	69.4	1,952	67.4	1,956	76.3
West Sussex	4,299	64.1	4,022	62.5	4,283	68.5	4,113	74.3	3,970	74.5	4,005	79.1	8,412	69.1	7,992	68.4	8,288	73.6
Windsor and Maidenhead	829	67.6	777	68.0	780	70.1	749	77.7	700	74.4	711	79.6	1,578	72.4	1,477	71.0	1,491	74.6
Wokingham	961	69.5	868	70.3	916	74.1	867	82.4	793	80.3	863	85.4	1,828	75.6	1,661	75.1	1,779	79.6
<b>SOUTH WEST</b>	<b>28,716</b>	<b>60.4</b>	<b>28,254</b>	<b>61.4</b>	<b>28,317</b>	<b>64.7</b>	<b>27,613</b>	<b>73.6</b>	<b>27,171</b>	<b>72.7</b>	<b>27,361</b>	<b>76.6</b>	<b>56,329</b>	<b>66.9</b>	<b>55,425</b>	<b>66.9</b>	<b>55,679</b>	<b>70.6</b>
Bath and North East Somerset	1,022	69.5	1,056	66.6	1,074	68.3	1,131	79.7	1,097	79.7	1,158	81.4	2,153	74.8	2,153	73.2	2,232	75.1
Bournemouth	883	61.9	837	62.1	857	65.5	853	70.2	885	72.0	817	79.1	1,736	66.0	1,722	67.2	1,674	72.1
Bristol, City of	1,573	47.4	1,537	55.0	1,477	62.0	1,419	63.6	1,486	68.6	1,399	75.5	2,992	55.1	3,023	61.7	2,876	68.6
Cornwall	3,028	58.1	2,967	59.3	2,961	63.0	2,939	71.6	2,914	70.6	2,840	75.7	5,967	64.8	5,881	64.9	5,801	69.4
Devon	3,867	61.8	3,921	61.7	3,854	63.2	3,740	75.9	3,646	73.5	3,715	76.3	7,607	68.7	7,567	67.4	7,569	69.7
Dorset	2,242	64.9	2,141	65.2	2,209	68.3	2,171	77.9	2,140	76.8	2,107	81.6	4,413	71.3	4,281	71.0	4,316	74.8
Gloucestershire	3,534	64.1	3,501	64.3	3,514	67.1	3,285	78.2	3,228	76.5	3,302	76.6	6,819	70.9	6,729	70.2	6,816	71.7
Isles of Scilly	13	92.3	6	66.7	10	70.0	10	80.0	9	88.9	12	83.3	23	87.0	15	80.0	22	77.3
North Somerset	1,180	65.5	1,137	65.1	1,111	68.2	1,119	75.2	1,080	69.4	1,119	76.7	2,299	70.2	2,217	67.2	2,230	72.5
Plymouth	1,518	55.5	1,463	56.2	1,493	64.0	1,514	68.6	1,445	68.2	1,450	73.5	3,032	62.0	2,908	62.1	2,943	68.7
Poole	799	64.1	849	59.4	846	62.5	858	73.9	804	74.3	798	75.1	1,657	69.2	1,653	66.6	1,644	68.6
Somerset	2,898	58.0	2,886	59.4	2,849	64.8	2,821	71.5	2,680	69.6	2,784	75.1	5,719	64.6	5,566	64.3	5,633	69.9
South Gloucestershire	1,660	58.5	1,614	57.4	1,675	61.0	1,455	71.5	1,442	68.7	1,480	74.6	3,115	64.6	3,056	62.8	3,155	67.4
Swindon	1,092	56.5	1,120	59.9	1,061	62.9	1,069	68.8	1,064	70.0	1,061	76.8	2,161	62.6	2,184	64.8	2,122	69.8
Torbay	809	58.5	770	61.7	763	60.6	745	65.8	720	68.5	737	74.9	1,554	62.0	1,490	65.0	1,500	67.6
Wiltshire	2,598	61.7	2,449	65.3	2,563	65.7	2,484	76.9	2,531	76.3	2,582	77.3	5,082	69.1	4,980	70.9	5,145	71.5
<b>TOTAL (Maintained sector)<sup>1</sup></b>	<b>294,580</b>	<b>58.1</b>	<b>283,868</b>	<b>59.9</b>	<b>284,394</b>	<b>64.2</b>	<b>285,290</b>	<b>70.3</b>	<b>275,773</b>	<b>70.9</b>	<b>275,852</b>	<b>75.7</b>	<b>579,870</b>	<b>64.1</b>	<b>559,641</b>	<b>65.3</b>		

Table 5: Percentage of pupils in maintained schools making expected progress in mathematics between Key Stage 2 and Key Stage 4, by Local Authority and Region<sup>1</sup>

Year: 2008 - 2010<sup>2</sup>

Coverage: England<sup>3,4</sup>

This table was updated on 20 June 2011 to correct errors that were present in the figures for the London regional sub-totals for columns relating to 2008. The grand totals across all regions were erroneously duplicated in these cells.

	Boys						Girls						Total					
	2008		2009		2010		2008		2009		2010		2008		2009		2010	
	Number of eligible pupils	Percentage making expected progress	Number of eligible pupils	Percentage making expected progress	Number of eligible pupils	Percentage making expected progress	Number of eligible pupils	Percentage making expected progress	Number of eligible pupils	Percentage making expected progress	Number of eligible pupils	Percentage making expected progress	Number of eligible pupils	Percentage making expected progress	Number of eligible pupils	Percentage making expected progress	Number of eligible pupils	Percentage making expected progress
<b>NORTH EAST</b>	<b>16,226</b>	<b>48.3</b>	<b>15,360</b>	<b>49.7</b>	<b>14,816</b>	<b>55.0</b>	<b>15,515</b>	<b>51.5</b>	<b>14,869</b>	<b>51.5</b>	<b>14,257</b>	<b>57.2</b>	<b>31,741</b>	<b>49.9</b>	<b>30,229</b>	<b>50.6</b>	<b>29,073</b>	<b>56.1</b>
Darlington	638	55.2	609	51.6	583	63.1	578	56.2	556	55.2	538	62.3	1,216	55.7	1,165	53.3	1,121	62.7
Durham	3,215	44.9	2,902	49.6	2,794	53.2	3,014	48.0	2,794	51.9	2,662	56.3	6,229	46.4	5,696	50.7	5,456	54.7
Gateshead	1,144	49.7	1,087	53.0	1,043	56.9	1,110	52.0	1,041	52.3	1,049	58.0	2,254	50.8	2,128	52.6	2,092	57.4
Hartlepool	635	47.2	593	49.7	536	51.1	643	49.0	640	49.4	604	56.8	1,278	48.1	1,233	49.6	1,240	53.9
Middlesbrough	876	44.1	861	36.5	835	49.9	866	41.9	842	42.0	825	48.1	1,742	43.0	1,703	39.2	1,660	49.0
Newcastle upon Tyne	1,428	42.2	1,339	44.7	1,280	55.2	1,249	44.1	1,315	46.0	1,178	56.8	2,677	43.1	2,654	45.4	2,458	55.9
North Tyneside	1,179	55.1	1,172	55.5	1,080	58.1	1,155	59.4	1,097	55.2	1,038	59.3	2,334	57.2	2,269	55.4	2,118	58.7
Northumberland	1,960	57.7	1,899	58.7	1,797	59.4	1,873	62.1	1,842	58.8	1,749	62.9	3,833	59.8	3,741	58.8	3,546	61.1
Redcar and Cleveland	994	47.0	954	51.2	983	55.1	1,032	53.4	935	53.8	945	56.6	2,026	50.2	1,889	52.5	1,928	55.9
South Tyneside	1,025	44.1	947	45.7	897	52.8	908	48.6	943	48.6	861	51.7	1,933	46.2	1,890	47.1	1,758	52.3
Stockton-on-Tees	1,248	52.3	1,241	49.6	1,188	53.0	1,233	57.1	1,160	54.4	1,096	58.9	2,481	54.7	2,401	51.9	2,284	55.9
Sunderland	1,884	44.5	1,756	44.9	1,700	53.7	1,854	47.0	1,704	47.0	1,712	56.3	3,738	45.7	3,460	46.0	3,412	55.0
<b>NORTH WEST</b>	<b>43,915</b>	<b>52.1</b>	<b>41,370</b>	<b>54.2</b>	<b>40,772</b>	<b>58.7</b>	<b>42,136</b>	<b>56.3</b>	<b>40,361</b>	<b>55.9</b>	<b>39,534</b>	<b>62.0</b>	<b>86,051</b>	<b>54.1</b>	<b>81,731</b>	<b>55.0</b>	<b>80,306</b>	<b>60.3</b>
Blackburn with Darwen	942	52.9	900	52.7	911	58.0	891	58.9	869	54.4	846	58.9	1,833	55.8	1,769	53.5	1,757	58.4
Blackpool	804	37.4	791	38.7	813	46.2	833	37.8	815	41.0	759	48.2	1,637	37.6	1,606	39.9	1,572	47.2
Bolton	1,868	51.6	1,755	50.0	1,722	56.8	1,754	56.7	1,757	53.2	1,738	58.6	3,622	54.1	3,512	51.6	3,460	57.7
Bury	1,207	62.7	1,107	64.9	1,123	66.9	1,150	66.0	1,073	64.1	1,058	69.7	2,357	64.3	2,180	64.5	2,181	68.2
Cheshire <sup>5</sup>	4,168	57.8	-	-	-	-	4,129	62.1	-	-	-	-	8,297	59.9	-	-	-	-
Cheshire West and Chester <sup>6</sup>	-	-	2,052	56.7	2,072	63.1	-	-	1,829	60.6	1,845	64.3	-	-	3,881	58.5	3,917	63.7
Cheshire East <sup>7</sup>	-	-	1,946	63.5	1,890	64.6	-	-	1,996	66.0	2,001	67.1	-	-	3,942	64.8	3,891	65.8
Cumbria	3,312	53.4	3,048	55.0	3,088	60.1	3,040	58.2	2,941	56.2	2,930	63.0	6,352	55.7	5,989	55.6	6,018	61.5
Halton	800	54.5	786	53.9	767	60.8	820	61.5	740	53.1	756	59.3	1,620	58.0	1,526	53.5	1,523	60.0
Knowsley	1,002	34.3	845	34.2	861	42.6	916	35.8	784	37.0	777	42.6	1,918	35.0	1,629	35.5	1,638	42.6
Lancashire	7,155	54.2	6,878	57.6	6,783	60.3	6,849	58.2	6,573	59.6	6,474	63.6	14,004	56.1	13,451	58.6	13,257	61.9
Liverpool	2,719	44.9	2,563	45.0	2,459	54.0	2,722	49.0	2,685	47.6	2,565	59.4	5,441	46.9	5,248	46.3	5,024	56.7
Manchester	2,350	39.7	2,175	43.3	2,112	50.9	2,254	46.6	2,244	45.5	2,148	55.9	4,604	43.1	4,419	44.4	4,260	53.4
Oldham	1,658	49.0	1,516	51.8	1,500	55.2	1,456	50.5	1,455	52.7	1,445	60.2	3,114	49.7	2,971	52.2	2,945	57.7
Rochdale	1,316	56.8	1,361	57.1	1,288	60.9	1,321	61.2	1,172	62.5	1,208	63.6	2,637	59.0	2,533	59.6	2,496	62.2
Salford	1,209	47.1	1,127	49.1	1,047	49.7	1,211	48.5	1,177	51.2	1,103	59.2	2,420	47.8	2,304	50.2	2,150	54.6
Sefton	1,861	54.0	1,774	53.8	1,635	57.7	1,762	59.1	1,716	56.2	1,645	61.1	3,623	56.5	3,490	55.0	3,280	59.4
St. Helens	1,106	41.2	1,087	49.5	1,001	54.7	1,120	50.8	1,052	48.6	996	55.9	2,226	46.0	2,139	49.0	1,997	55.3
Stockport	1,675	61.9	1,561	60.3	1,541	65.3	1,710	61.9	1,436	62.3	1,430	69.0	3,385	61.9	2,997	61.3	2,971	67.1
Tameside	1,566	48.0	1,456	49.7	1,482	53.0	1,564	51.3	1,486	51.3	1,404	57.2	3,130	49.7	2,942	50.5	2,886	55.1
Trafford	1,537	67.3	1,434	67.1	1,474	71.4	1,399	69.7	1,400	67.8	1,343	73.8	2,936	68.4	2,834	67.4	2,817	72.5
Warrington	1,345	54.9	1,308	62.2	1,314	62.4	1,210	59.8	1,230	63.3	1,187	66.2	2,555	57.2	2,538	62.7	2,501	64.2
Wigan	2,154	48.6	1,902	52.7	1,889	57.9	2,087	53.2	1,986	52.0	1,924	60.5	4,241	50.9	3,888	52.3	3,813	59.2
Wirral	2,161	53.7	1,998	56.7	2,000	59.6	1,938	60.1	1,945	60.2	1,952	67.5	4,099	56.7	3,943	58.4	3,952	63.5
<b>YORKSHIRE &amp; HUMBER</b>	<b>31,771</b>	<b>49.0</b>	<b>30,642</b>	<b>51.4</b>	<b>29,901</b>	<b>55.7</b>	<b>30,738</b>	<b>53.5</b>	<b>28,961</b>	<b>53.0</b>	<b>29,126</b>	<b>58.3</b>	<b>62,509</b>	<b>51.3</b>	<b>59,603</b>	<b>52.2</b>	<b>59,027</b>	<b>57.0</b>
Barnsley	1,487	31.3	1,365	38.5	1,299	42.9	1,343	37.6	1,248	39.6	1,245	42.0	2,830	34.3	2,613	39.0	2,544	42.5
Bradford	3,005	43.4	2,938	47.9	2,858	50.9	2,898	46.9	2,772	49.9	2,803	55.1	5,903	45.1	5,710	48.9	5,661	53.0
Calderdale	1,296	55.9	1,363	52.8	1,338	57.5	1,344	59.4	1,229	57.0	1,247	59.7	2,640	57.7	2,592	54.7	2,585	58.5
Doncaster	1,899	40.1	1,901	44.4	1,748	51.2	1,836	45.7	1,722	43.1	1,767	53.8	3,735	42.9	3,623	43.8	3,515	52.5
East Riding of Yorkshire	2,052	61.1	2,005	57.4	1,983	62.0	1,992	66.6	1,967	59.1	1,939	64.7	4,044	63.8	3,972	58.2	3,922	63.3
Kingston upon Hull, City of	1,580	29.9	1,456	36.3	1,388	42.8	1,479	34.4	1,397	37.6	1,355	42.8	3,059	32.1	2,853	36.9	2,743	42.8
Kirklees	2,402	51.0	2,351	53.4	2,319	58.9	2,353	55.8	2,251	53.9	2,199	62.0	4,755	53.4	4,602	53.7	4,518	60.4
Leeds	4,294	51.3	4,147	50.3	4,049	54.9	4,155	55.2	3,875	51.5	3,922	57.1	8,449	53.2	8,022	50.9	7,971	56.0
North East Lincolnshire	1,137	41.8	979	50.9	973	54.7	1,039	49.1	951	52.8	997	58.0	2,176	45.3	1,930	51.8	1,970	56.3
North Lincolnshire	1,126	46.4	1,021	50.5	991	55.5	1,031	50.8	965	51.8	993	57.3	2,157	48.5	1,986	51.2	1,984	56.4
North Yorkshire	3,621	58.1	3,546	63.1	3,476	65.4	3,604	63.4	3,312	65.5	3,352	69.5	7,225	60.7	6,858	64.3	6,828	67.4
Rotherham	1,935	46.6	1,840	51.6	1,797	54.9	1,859	51.0	1,793	51.6	1,793	55.3	3,794	48.8	3,633	51.6	3,590	55.1
Sheffield	2,927	48.0	2,859	51.6	2,788	57.1	2,805	53.3	2,764	53.5	2,727	60.2	5,732	50.6	5,623	52.5	5,515	58.6
Wakefield	2,099	56.9	2,011	50.9	2,031	53.4	2,068	55.7	1,891	53.6	1,919	57.5	4,167	56.3	3,902	52.2	3,950	55.4
York	911	62.2	860	62.6	863	64.2	932	64.7	824	64.9	868	65.6	1,843	63.5	1,684	63.7	1,731	64.9

	Boys						Girls						Total					
	2008		2009		2010		2008		2009		2010		2008		2009		2010	
	Number of eligible pupils	Percentage making expected progress	Number of eligible pupils	Percentage making expected progress	Number of eligible pupils	Percentage making expected progress	Number of eligible pupils	Percentage making expected progress	Number of eligible pupils	Percentage making expected progress	Number of eligible pupils	Percentage making expected progress	Number of eligible pupils	Percentage making expected progress	Number of eligible pupils	Percentage making expected progress	Number of eligible pupils	Percentage making expected progress
<b>EAST MIDLANDS</b>	<b>26,697</b>	<b>51.2</b>	<b>25,853</b>	<b>54.9</b>	<b>25,820</b>	<b>58.2</b>	<b>25,538</b>	<b>56.0</b>	<b>24,643</b>	<b>57.4</b>	<b>24,898</b>	<b>61.6</b>	<b>52,235</b>	<b>53.6</b>	<b>50,496</b>	<b>56.1</b>	<b>50,718</b>	<b>59.9</b>
Derby	1,497	54.4	1,417	53.4	1,415	62.7	1,484	56.9	1,356	54.4	1,402	63.7	2,981	55.6	2,773	53.9	2,817	63.2
Derbyshire	4,662	52.3	4,549	55.5	4,430	58.2	4,535	56.7	4,245	57.8	4,260	60.9	9,197	54.5	8,794	56.6	8,690	59.5
Leicester	1,728	47.8	1,683	52.2	1,716	55.8	1,544	50.8	1,630	56.7	1,664	63.6	3,272	49.2	3,313	54.4	3,380	59.6
Leicestershire	3,931	56.9	3,708	58.8	3,780	60.4	3,652	60.4	3,574	58.8	3,572	63.1	7,583	58.6	7,282	58.8	7,352	61.7
Lincolnshire	4,168	57.1	4,214	60.8	4,239	63.0	4,097	61.9	4,037	64.5	4,186	67.7	8,265	59.5	8,251	62.6	8,425	65.3
Northamptonshire	4,220	50.0	4,074	53.8	3,945	56.8	3,954	56.0	3,758	56.3	3,848	60.1	8,174	52.9	7,832	55.0	7,793	58.4
Nottingham	1,388	37.8	1,431	46.3	1,313	49.6	1,400	42.1	1,273	51.4	1,358	55.9	2,788	40.0	2,704	48.7	2,671	52.8
Nottinghamshire	4,869	45.2	4,544	50.4	4,733	54.6	4,643	51.9	4,539	52.6	4,369	56.5	9,512	48.5	9,083	51.5	9,102	55.5
Rutland	234	63.7	233	62.2	249	65.1	229	64.2	231	66.7	239	71.5	463	63.9	464	64.4	488	68.2
<b>WEST MIDLANDS</b>	<b>33,644</b>	<b>51.7</b>	<b>32,252</b>	<b>54.6</b>	<b>32,256</b>	<b>58.1</b>	<b>32,274</b>	<b>57.7</b>	<b>30,977</b>	<b>57.1</b>	<b>31,121</b>	<b>62.4</b>	<b>65,918</b>	<b>54.6</b>	<b>63,229</b>	<b>55.8</b>	<b>63,377</b>	<b>60.2</b>
Birmingham	6,249	51.1	6,064	53.6	5,961	58.7	5,922	59.4	5,793	57.9	5,927	65.0	12,171	55.2	11,857	55.7	11,888	61.8
Coventry	1,789	49.5	1,726	51.4	1,792	56.3	1,732	55.8	1,668	57.6	1,722	61.2	3,521	52.6	3,394	54.5	3,514	58.7
Dudley	2,139	51.1	2,079	55.1	2,050	60.4	2,011	54.4	1,843	54.4	1,862	60.4	4,150	52.7	3,922	54.8	3,912	60.4
Herefordshire	966	60.5	969	63.2	935	59.5	986	67.7	885	61.2	923	69.6	1,952	64.1	1,854	62.2	1,858	64.5
Sandwell	1,956	37.5	1,802	45.8	1,756	47.7	1,768	44.6	1,682	47.1	1,697	52.4	3,724	40.9	3,484	46.4	3,453	50.0
Shropshire	1,629	65.0	1,593	63.9	1,642	65.5	1,618	66.3	1,546	66.8	1,559	69.6	3,247	65.6	3,139	65.3	3,201	67.5
Solihull	1,567	54.6	1,545	55.9	1,600	59.2	1,485	58.9	1,505	57.1	1,459	62.4	3,052	56.7	3,050	56.5	3,059	60.7
Staffordshire	5,189	54.9	4,820	58.9	4,838	58.5	5,055	60.9	4,765	59.5	4,820	61.4	10,244	57.8	9,585	59.2	9,658	59.9
Stoke-on-Trent	1,460	42.5	1,303	42.4	1,311	48.3	1,318	45.5	1,337	45.1	1,242	53.0	2,778	43.9	2,640	43.8	2,553	50.6
Telford and Wrekin	1,102	53.1	1,100	54.9	1,082	60.4	1,024	54.0	991	54.6	1,020	62.1	2,126	53.5	2,091	54.8	2,102	61.2
Walsall	1,931	46.6	1,890	48.0	1,816	51.9	1,876	50.4	1,732	51.5	1,715	56.2	3,807	48.5	3,622	49.7	3,531	54.0
Warwickshire	3,004	54.4	3,021	59.9	3,092	63.2	3,037	61.4	2,834	62.1	2,933	66.4	6,041	58.0	5,855	60.9	6,025	64.7
Wolverhampton	1,426	44.0	1,269	50.4	1,339	55.3	1,368	54.4	1,397	54.6	1,317	64.8	2,794	49.1	2,666	52.6	2,656	60.1
Worcestershire	3,237	54.4	3,071	53.8	3,042	60.0	3,074	60.7	2,999	58.3	2,925	63.3	6,311	57.5	6,070	56.0	5,967	61.6
<b>EAST OF ENGLAND</b>	<b>32,976</b>	<b>57.6</b>	<b>32,239</b>	<b>60.1</b>	<b>32,748</b>	<b>63.0</b>	<b>31,949</b>	<b>63.4</b>	<b>31,381</b>	<b>62.7</b>	<b>31,546</b>	<b>66.2</b>	<b>64,925</b>	<b>60.4</b>	<b>63,620</b>	<b>61.4</b>	<b>64,294</b>	<b>64.6</b>
Bedford <sup>a</sup>	-	-	892	60.4	895	61.2	-	-	883	61.7	869	63.5	-	-	1,775	61.1	1,764	62.4
Bedfordshire <sup>b</sup>	2,450	57.9	-	-	-	-	2,313	62.7	-	-	-	-	4,763	60.2	-	-	-	-
Cambridgeshire	3,013	60.2	2,873	62.8	3,045	67.6	2,879	65.3	2,831	66.7	2,897	69.9	5,892	62.7	5,704	64.7	5,942	68.7
Central Bedfordshire <sup>c</sup>	-	-	1,411	57.3	1,551	60.5	-	-	1,414	60.2	1,401	65.0	-	-	2,825	58.8	2,952	62.6
Essex	8,339	55.3	8,053	57.7	8,100	60.7	7,986	61.4	7,744	59.6	7,845	63.0	16,325	58.3	15,797	58.6	15,945	61.9
Hertfordshire	6,551	62.5	6,474	65.3	6,440	68.8	6,521	68.8	6,262	68.4	6,383	72.7	13,072	65.6	12,736	66.8	12,823	70.7
Luton	1,195	60.4	1,166	65.7	1,177	67.9	1,090	66.6	1,124	65.7	1,101	66.9	2,285	63.4	2,290	65.7	2,278	67.4
Norfolk	4,494	58.6	4,385	59.8	4,504	61.8	4,363	62.2	4,319	62.8	4,394	64.7	8,857	60.3	8,704	61.3	8,898	63.2
Peterborough	1,050	39.5	1,110	46.4	1,073	51.1	1,001	47.9	1,081	48.7	1,077	54.2	2,051	43.6	2,191	47.5	2,150	52.7
Southend-on-Sea	1,074	57.1	1,120	65.3	1,163	64.4	1,072	64.5	1,031	66.8	1,020	73.9	2,146	60.8	2,151	66.0	2,183	68.9
Suffolk	3,976	55.8	3,825	58.3	3,953	58.2	3,889	62.4	3,786	60.0	3,651	62.5	7,865	59.1	7,611	59.1	7,604	60.2
Thurrock	834	54.9	930	53.4	847	66.8	835	59.3	906	61.8	908	67.2	1,669	57.1	1,836	57.6	1,755	67.0
<b>LONDON</b>	<b>35,357</b>	<b>60.9</b>	<b>34,920</b>	<b>64.6</b>	<b>35,582</b>	<b>67.8</b>	<b>35,276</b>	<b>65.5</b>	<b>34,973</b>	<b>67.3</b>	<b>35,172</b>	<b>70.6</b>	<b>70,633</b>	<b>63.2</b>	<b>69,893</b>	<b>66.0</b>	<b>70,754</b>	<b>69.2</b>
<b>Inner London</b>	<b>10,560</b>	<b>58.2</b>	<b>10,468</b>	<b>62.1</b>	<b>10,696</b>	<b>65.8</b>	<b>10,981</b>	<b>63.1</b>	<b>11,020</b>	<b>65.1</b>	<b>11,025</b>	<b>69.6</b>	<b>21,541</b>	<b>60.7</b>	<b>21,488</b>	<b>63.6</b>	<b>21,721</b>	<b>67.7</b>
Camden	566	53.2	586	56.0	561	63.3	844	59.6	799	61.6	893	66.7	1,410	57.0	1,385	59.2	1,454	65.4
Hackney	322	43.2	469	66.3	424	62.5	801	59.6	811	70.0	843	71.5	1,123	54.9	1,280	68.7	1,267	68.5
HammerSmith and Fulham	528	64.6	476	73.1	477	75.3	529	71.5	516	79.7	498	83.9	1,057	68.0	992	76.5	975	79.7
Haringey	1,076	57.9	1,020	65.0	1,053	64.5	908	61.8	978	67.0	947	69.2	1,984	59.7	1,998	66.0	2,000	66.7
Islington	681	62.0	663	65.2	701	68.9	651	57.6	656	59.5	629	63.9	1,332	59.8	1,319	62.3	1,330	66.5
Kensington and Chelsea	307	73.6	305	75.7	296	80.1	247	58.7	252	62.3	241	75.9	554	67.0	557	69.7	537	78.2
Lambeth	590	59.2	666	57.5	692	60.8	766	65.5	808	68.2	847	71.0	1,356	62.8	1,474	63.4	1,539	66.4
Lewisham	998	57.8	995	59.5	1,065	57.6	1,043	56.2	1,003	60.2	997	58.6	2,041	57.0	1,998	59.9	2,062	58.1
Newham	1,483	62.8	1,509	63.6	1,562	68.6	1,549	69.8	1,627	64.0	1,519	69.5	3,032	66.4	3,136	63.8	3,081	69.0
Southwark	1,126	56.2	1,089	59.9	1,087	68.4	1,097	64.8	1,089	63.6	1,083	70.4	2,223	60.5	2,178	61.8	2,170	69.4
Tower Hamlets	1,256	55.8	1,140	56.4	1,203	63.4	1,087	57.0	1,072	58.7	1,077	64.6	2,343	56.4	2,212	57.5	2,280	64.0
Wandsworth	1,022	55.6	966	63.1	963	65.8	816	65.7	767	67.3	771	72.9	1,838	60.1	1,733	65.0	1,734	69.0
Westminster	605	55.5	584	58.9	612	67.0	643	69.8	642	72.9	680	81.2	1,248	62.9	1,226	66.2	1,292	74.5

	Boys						Girls						Total					
	2008		2009		2010		2008		2009		2010		2008		2009		2010	
	Number of eligible pupils	Percentage making expected progress	Number of eligible pupils	Percentage making expected progress	Number of eligible pupils	Percentage making expected progress	Number of eligible pupils	Percentage making expected progress	Number of eligible pupils	Percentage making expected progress	Number of eligible pupils	Percentage making expected progress	Number of eligible pupils	Percentage making expected progress	Number of eligible pupils	Percentage making expected progress	Number of eligible pupils	Percentage making expected progress
<b>Outer London</b>	<b>24,797</b>	<b>62.0</b>	<b>24,452</b>	<b>65.7</b>	<b>24,886</b>	<b>68.7</b>	<b>24,295</b>	<b>66.6</b>	<b>23,953</b>	<b>68.4</b>	<b>24,147</b>	<b>71.1</b>	<b>49,092</b>	<b>64.3</b>	<b>48,405</b>	<b>67.0</b>	<b>49,033</b>	<b>69.9</b>
Barking and Dagenham	968	48.3	1,006	55.6	1,080	60.6	985	49.5	939	54.7	956	60.3	1,953	49.0	1,945	55.2	2,036	60.5
Barnet	1,690	69.5	1,599	69.4	1,705	73.7	1,530	68.8	1,472	69.2	1,529	76.8	3,220	69.1	3,071	69.3	3,234	75.2
Bexley	1,649	56.9	1,627	62.5	1,634	62.5	1,520	64.3	1,503	67.2	1,564	68.7	3,169	60.5	3,130	64.8	3,198	65.6
Brent	1,231	71.4	1,288	75.3	1,339	77.4	1,271	75.6	1,271	75.6	1,295	75.3	2,502	73.5	2,560	75.4	2,634	76.3
Bromley	1,760	63.5	1,730	66.2	1,669	72.8	1,680	69.6	1,710	72.5	1,681	71.1	3,440	66.5	3,440	69.3	3,350	71.9
Croydon	1,747	56.5	1,664	61.8	1,707	66.7	1,859	63.7	1,811	64.5	1,818	66.8	3,606	60.2	3,475	63.2	3,525	66.8
Ealing	1,253	65.3	1,321	67.6	1,347	70.2	1,254	67.8	1,261	67.6	1,325	72.2	2,507	66.5	2,582	67.6	2,672	71.2
Enfield	1,906	56.6	1,773	62.7	1,771	64.1	1,718	62.0	1,694	63.9	1,719	68.9	3,624	59.2	3,467	63.3	3,490	66.5
Greenwich	1,087	50.3	1,040	52.1	1,078	55.9	1,159	55.4	1,203	56.3	1,092	63.9	2,246	52.9	2,243	54.3	2,170	60.0
Harrow	1,013	68.1	984	71.8	1,012	75.3	1,035	75.3	995	78.5	1,024	78.6	2,048	71.7	1,979	75.2	2,036	77.0
Havering	1,503	62.9	1,507	64.9	1,538	67.9	1,476	66.5	1,470	67.6	1,501	69.9	2,979	64.7	2,977	66.2	3,039	68.9
Hillingdon	1,519	57.2	1,445	61.2	1,472	63.0	1,442	57.8	1,380	60.6	1,440	65.3	2,961	57.5	2,795	60.9	2,912	64.1
Hounslow	1,224	57.3	1,193	65.3	1,238	68.5	1,273	65.2	1,193	70.3	1,202	69.5	2,497	61.3	2,386	67.8	2,440	69.0
Kingston upon Thames	711	65.5	667	71.4	656	74.5	764	75.0	774	75.3	747	76.3	1,475	70.4	1,441	73.5	1,403	75.5
Merton	808	55.3	773	61.8	781	63.5	668	64.7	674	60.1	692	65.0	1,476	59.6	1,447	61.0	1,473	64.2
Redbridge	1,575	77.6	1,585	75.8	1,598	80.0	1,532	80.9	1,526	80.7	1,464	82.3	3,107	79.2	3,111	78.2	3,062	81.1
Richmond upon Thames	654	58.6	698	61.5	641	63.7	724	61.5	666	64.3	640	68.6	1,378	60.1	1,364	62.8	1,281	66.1
Sutton	1,298	73.1	1,334	76.6	1,328	76.3	1,204	76.3	1,219	78.0	1,273	80.0	2,502	74.7	2,553	77.3	2,601	78.1
Waltham Forest	1,201	57.7	1,248	60.7	1,292	64.2	1,201	63.4	1,191	67.3	1,185	68.9	2,402	60.6	2,439	63.9	2,477	66.4
<b>SOUTH EAST</b>	<b>46,264</b>	<b>58.5</b>	<b>44,344</b>	<b>61.4</b>	<b>45,582</b>	<b>65.0</b>	<b>44,333</b>	<b>63.1</b>	<b>42,745</b>	<b>63.7</b>	<b>43,141</b>	<b>67.0</b>	<b>90,597</b>	<b>60.7</b>	<b>87,089</b>	<b>62.5</b>	<b>88,723</b>	<b>66.0</b>
Bracknell Forest	551	56.3	512	60.0	551	64.2	507	63.9	570	61.4	514	65.0	1,058	59.9	1,082	60.7	1,065	64.6
Brighton and Hove	1,150	48.4	1,153	50.6	1,202	57.1	1,136	49.7	1,056	52.7	1,094	55.0	2,286	49.1	2,209	51.6	2,296	56.1
Buckinghamshire	2,890	68.3	2,770	71.9	2,956	73.9	2,787	71.8	2,714	76.5	2,679	75.8	5,677	70.0	5,484	74.2	5,635	74.8
East Sussex	2,742	53.4	2,612	58.8	2,746	63.8	2,646	61.0	2,466	63.0	2,524	66.4	5,388	57.1	5,078	60.8	5,270	65.0
Hampshire	7,243	61.4	7,007	63.2	7,120	66.1	6,803	66.0	6,772	65.3	6,766	68.1	14,046	63.6	13,779	64.2	13,886	67.1
Isle of Wight	780	51.2	778	47.8	768	56.5	756	56.6	716	52.9	740	59.5	1,536	53.8	1,494	50.3	1,508	58.0
Kent	8,539	56.7	8,292	60.3	8,439	63.0	8,171	61.3	7,983	62.3	8,057	65.6	16,710	58.9	16,275	61.3	16,496	64.3
Medway	1,668	54.1	1,639	57.5	1,680	60.3	1,781	60.0	1,671	62.0	1,667	65.4	3,449	57.6	3,310	59.8	3,347	62.9
Milton Keynes	1,347	49.8	1,305	58.8	1,387	58.0	1,281	55.6	1,209	57.3	1,279	63.5	2,628	52.6	2,514	58.1	2,666	60.7
Oxfordshire	3,365	57.4	3,158	62.2	3,161	67.4	3,125	63.5	2,925	63.2	3,040	67.8	6,490	60.3	6,083	62.7	6,201	67.6
Portsmouth	1,044	45.0	994	43.5	948	52.4	984	45.2	931	45.0	909	51.7	2,028	45.1	1,925	44.2	1,857	52.1
Reading	459	64.9	419	63.2	461	65.5	472	64.6	482	64.3	460	64.3	931	64.8	901	63.8	921	64.9
Slough	710	71.3	697	73.3	780	75.1	751	69.4	705	70.1	707	74.7	1,461	70.3	1,402	71.7	1,487	74.9
Southampton	1,088	49.5	1,031	47.8	983	52.6	1,233	54.3	1,142	53.7	1,051	58.9	2,321	52.1	2,173	50.9	2,034	55.9
Surrey	5,504	63.1	5,321	66.2	5,383	69.2	5,219	66.8	4,950	66.9	5,127	69.5	10,723	64.9	10,271	66.5	10,510	69.4
West Berkshire	1,074	60.5	959	67.3	1,002	68.8	966	65.7	997	66.3	950	67.8	2,040	63.0	1,956	66.8	1,952	68.3
West Sussex	4,311	56.0	4,046	57.0	4,300	62.2	4,097	61.1	3,955	61.8	3,994	66.3	8,408	58.5	8,001	59.4	8,294	64.2
Windsor and Maidenhead	834	66.4	781	68.9	784	72.4	748	74.6	703	72.4	712	76.5	1,582	70.3	1,484	70.6	1,496	74.4
Wokingham	965	66.7	870	70.2	931	72.6	870	71.6	798	73.6	871	76.2	1,835	69.0	1,668	71.8	1,802	74.4
<b>SOUTH WEST</b>	<b>28,762</b>	<b>54.8</b>	<b>28,335</b>	<b>59.3</b>	<b>28,356</b>	<b>61.8</b>	<b>27,562</b>	<b>60.5</b>	<b>27,095</b>	<b>60.9</b>	<b>27,295</b>	<b>64.4</b>	<b>56,324</b>	<b>57.6</b>	<b>55,430</b>	<b>60.1</b>	<b>55,651</b>	<b>63.0</b>
Bath and North East Somerset	1,023	61.2	1,053	64.5	1,076	66.4	1,129	66.8	1,094	65.4	1,152	65.6	2,152	64.1	2,147	65.4	2,228	65.0
Bournemouth	882	51.7	842	56.1	859	60.9	853	55.6	888	61.8	809	70.6	1,735	53.6	1,730	59.0	1,668	65.6
Bristol, City of	1,569	40.6	1,533	45.1	1,481	52.0	1,426	45.0	1,472	49.0	1,391	55.6	2,995	42.7	3,005	47.0	2,872	53.8
Cornwall	3,032	48.9	2,975	56.6	2,967	59.5	2,930	52.5	2,912	56.1	2,837	61.3	5,962	50.7	5,887	56.4	5,804	60.4
Devon	3,872	55.3	3,934	60.1	3,853	61.2	3,727	62.9	3,642	62.6	3,696	66.2	7,599	59.0	7,576	61.3	7,549	63.7
Dorset	2,244	61.1	2,149	63.1	2,210	65.1	2,170	65.4	2,129	65.1	2,102	69.3	4,414	63.2	4,278	64.1	4,312	67.1
Gloucestershire	3,541	61.6	3,521	64.8	3,519	67.3	3,271	69.7	3,215	69.1	3,293	70.3	6,812	65.5	6,736	66.8	6,812	68.8
Isles of Scilly	13	100.0	5	80.0	10	100.0	10	100.0	9	88.9	12	100.0	23	100.0	14	85.7	22	100.0
North Somerset	1,178	55.9	1,134	60.8	1,112	59.9	1,113	57.8	1,075	53.2	1,111	60.5	2,291	56.8	2,209	57.1	2,223	60.2
Plymouth	1,523	49.7	1,473	53.0	1,499	55.5	1,513	52.6	1,437	53.9	1,454	56.1	3,036	51.2	2,910	53.4	2,953	55.8
Poole	800	65.0	854	61.6	844	63.5	859	69.0	800	69.4	798	66.3	1,659	67.1	1,654	65.4	1,642	64.9
Somerset	2,895	51.6	2,896	58.6	2,846	60.3	2,817	59.8	2,678	60.0	2,781	63.2	5,712	55.6	5,574	59.3	5,627	61.7
South Gloucestershire	1,670	52.2	1,617	59.7	1,676	65.2	1,454	58.5	1,439	57.6	1,483	64.1	3,124	55.1	3,056	58.7	3,159	64.7
Swindon	1,111	44.6	1,122	48.4	1,065	52.4	1,063	49.5	1,064	50.7	1,064	53.8	2,174	47.0	2,186	49.5	2,129	53.1
Torbay	810	54.3	768	61.7	766	61.4	744	55.4	721	60.3	738	64.8	1,554	54.8	1,489	61.0	1,504	63.0
Wiltshire	2,599	62.5	2,459	65.0	2,573	66.0	2,483	68.7	2,520	65.9	2,574	67.1	5,082	65.6	4,979	65.5	5,147	66.6
<b>TOTAL (Maintained sector)<sup>1</sup></b>	<b>295,612</b>	<b>54.4</b>	<b>285,315</b>	<b>57.3</b>	<b>285,833</b>	<b>61.0</b>	<b>285,321</b>	<b>58.7</b>	<b>276,005</b>	<b>59.5</b>	<b>276,090</b>	<b>64.0</b>	<b>580,933</b>	<b>56.8</b>	<b>561,320</b>	<b>58.</b>		