



Ministry of
JUSTICE



HM Courts
& Tribunals
Service

Social Security and Child Support Statistics: 1 April 2011 to 30 September 2011

Statistical Notice

Published 3 November, 2011

Alternative format versions of this report are
available on request from
tsstats@hmcts.gsi.gov.uk.

© Crown copyright
Produced by the Ministry of Justice

Contents

Introduction	2
Key Findings	3
Commentary	5
Explanatory notes	11

Table 1.1 SSCS Receipts by Benefit Type

Table 2.1 SSCS Disposals by Benefit Type

Table 2.2 SSCS Hearing Outcomes by Benefit Type

Table 3.1 SSCS Caseload Outstanding

Introduction

This Statistical Notice presents information on the activity of the Social Security and Child Support (SSCS) tribunal for the period, 1 April 2011 to 30 September 2011.

I have taken the decision to release this information outside the usual timetable for Statistical Releases, due to the amount of Parliamentary and media interest in the work of SSCS over recent months, and to ensure that debate is informed by the latest data. It should be noted that information is provisional management information and may be amended when Official Statistics are published. This notice will be published monthly until the end of calendar year, when we will review the need for monthly publication. This is the ninth of such reports and they have been published at <http://www.justice.gov.uk/publications/statistics-and-data/tribunals/sscs-stats.htm>.

Quarterly Official Statistics for Tribunals, for all four quarters of 2010-11 (April 2010 to March 2011) and April to June of 2011 have been published and are available at www.justice.gov.uk/publications/statistics-and-data/tribunals/quarterly.htm.

Annual Official Statistics for Tribunals for 2010-11 have been published. The report is available at www.justice.gov.uk/publications/statistics-and-data/tribunals/annual-stats.htm.

Iain Bell

Chief Statistician

Ministry of Justice

Key Findings ¹

The Social Security and Child Support Tribunal (SSCS) arranges and carries out independent hearings for appeals on decisions made by the Department for Work and Pensions (including Jobcentre Plus, Child Support Agency and the Disability and Carers Service), as well as other government departments (HM Revenue and Customs) and local authorities.

SSCS had 180,700 receipts between 1 April 2011 and 30 September 2011, a decrease of 14% compared to the same period last year (209,200), but 28% higher than for the same period in 2009 (140,800). There has been a 24% increase in the number of disposals by this jurisdiction from 174,800 in the year to 30 September 2010, to 217,000 in the year to 30 September 2011. There were 70% more disposals in the six months ending 30 September 2011, when compared with the same six-month period in 2009 (127,700).

Receipts and Disposals

- The number of receipts in September 2011 (30,300) was 21% lower than in September 2010 (38,400), but 7% higher than in September 2009 (28,300).
- The number of disposals in September 2011 (36,400) was 10% higher than in September 2010 (33,200) and 60% higher than in September 2009 (22,800).
- In September 2011, the number of disposals exceeded receipts for the ninth consecutive month².
- For Employment Support Allowance (ESA) and Incapacity Benefit (IB) specifically:
 - The number of ESA/IB receipts in September 2011 (15,200) was 7% higher than last month³ (14,200) but 30% lower than in September 2010 (21,800) and 2% lower than September 2009 (15,500).

¹ Some figures for 2010-11 and April to June 2011 may have changed slightly from earlier publications as a result of a final end of year reconciliation for 2010-11 and a quarterly reconciliation of data for April to June 2011.

² The statistics are based on case management systems where a number of processes are recorded throughout the life of an appeal. In some instances, a case can re-enter the process or have a number of outcomes, meaning that there is not necessarily one receipt or one disposal per case. The quality of management information is being examined. Thus, care should be taken when comparing receipts and disposals.

³ However, it should be noted that there will be some differences in monthly figures because of seasonality.

- The number of ESA/IB disposals in September 2011 was 19,100, 2% higher than in September 2010 (18,600) and 95% higher than the number of disposals in September 2009 (9,800).
- The number of ESA/IB disposals outstripped receipts in September 2011 for the eleventh consecutive month.

Caseload Outstanding

- At 30 September, 2011, the caseload outstanding was 162,700, a decrease of 3% on the number at 31 August 2011 (168,400) and 11% lower than at 30 September 2010 (182,600). The caseload outstanding has decreased every month in this financial year. However, it is still 90% higher than the 85,400 outstanding at 30 September 2009.
- For ESA and IB cases, the number outstanding has continued to fall from 84,800 in August 2011 to 81,700 in September 2011.

Clearances and Timeliness

- The average clearance time (from receipt to disposal) has been increasing over the last couple of years. In September 2011, however, this average had fallen slightly to 24.3 weeks compared with 24.4 weeks in August 2011 and 19.3 weeks in September 2010.

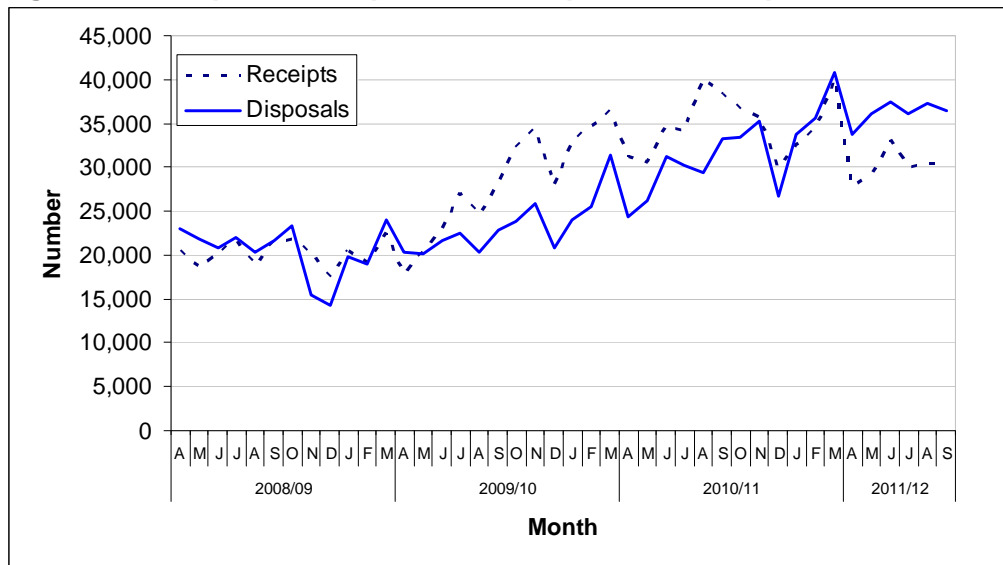
Commentary

Receipts and Disposals (Tables 1.1 and 2.1)

1. The Social Security and Child Support (SSCS) tribunal had 180,700 receipts in the period 1 April 2011 to 30 September 2011. Receipts to SSCS have been increasing over the last couple of years, with peaks of 40,100 in August 2010 and 40,200 in March 2011. The level of receipts has varied since August 2010. The 180,700 receipts in the period 1 April 2011 to 30 September 2011 were 14% lower than in the same period of 2010-11 (209,200). However, they were still 28% higher than the same period in 2009 (140,800).

2. The number of receipts in September 2011 (30,300) was 21% lower than in September 2010 (38,400), but 7% higher than in September 2009 (28,300).

Figure 1: Receipts and Disposals from April 2008 to September 2011



Source: SSCS monthly returns

3. Between 1 April and 30 September 2011, SSCS disposed of 217,000 cases – an increase of 24% on the number disposed of in the same period in 2010 (174,800), and 70% on the number in 2009 (127,700).

4. **Figure 1** shows the trend in receipts and disposals. The number of disposals has generally been rising since December 2009. In September 2011, there were 36,400 disposals - 10% higher than in September 2010

(33,200), and 60% higher than September 2009 (22,800). The number of disposals in September 2011 exceeded receipts for the ninth consecutive month.

Receipts and Disposals by Benefit Type (Tables 1.1 and 2.1)

5. Of those 180,700 cases received between 1 April 2011 and 30 September 2011:

- 90,700 or 50% related to Employment Support Allowance (ESA)/Incapacity Benefit (IB);
- 40,600 or 22% were for Disability Living Allowance/Attendance Allowance (DLA/AA);
- 24,400 or 14% were for Job Seeker's Allowance (JSA).

6. The rise in SSCS receipts over recent years has mainly been caused by the introduction of Employment Support Allowance in October 2008 to replace Incapacity Benefit. In the period 1 April to 30 September 2011, SSCS had 90,700 receipts for these two benefit types – 25% lower than the same period last year (120,300), and 37% more than received in the year to date to 30 September 2009 (66,000). Individually, receipts in Employment Support Allowance fell by 15% compared with 1 April to 30 September 2010, whilst receipts for Incapacity Benefit fell by 77% over the same period⁴.

7. Sizeable monthly increases in ESA/IB receipts were seen from June 2009 when receipts were 10,200, and the number generally continued to rise until August 2010, when ESA/IB receipts reached a peak of 23,600. Since August 2010, the number of ESA/IB receipts has fluctuated and was at 22,400 receipts in March 2011. The number of ESA/IB receipts was 15,200 in September 2011, 7% higher than last month, but 30% lower than in September 2010 (21,800).

8. Examining the other benefit types, the majority saw a fall in the number of receipts when comparing the period 1 April 2011 to 30 September 2011 with the same period in 2010. There were however, increases in the number of receipts for Social Fund, Pension Credits, Tax Credits, Carers Allowance and Job Seeker's Allowance (JSA).

Between 1 April -30 September 2010 and 1 April - 30 September 2011:

- Social Fund receipts increased by 57% to 3,500;
- Pensions Credit receipts increased by 46% to 1,000;

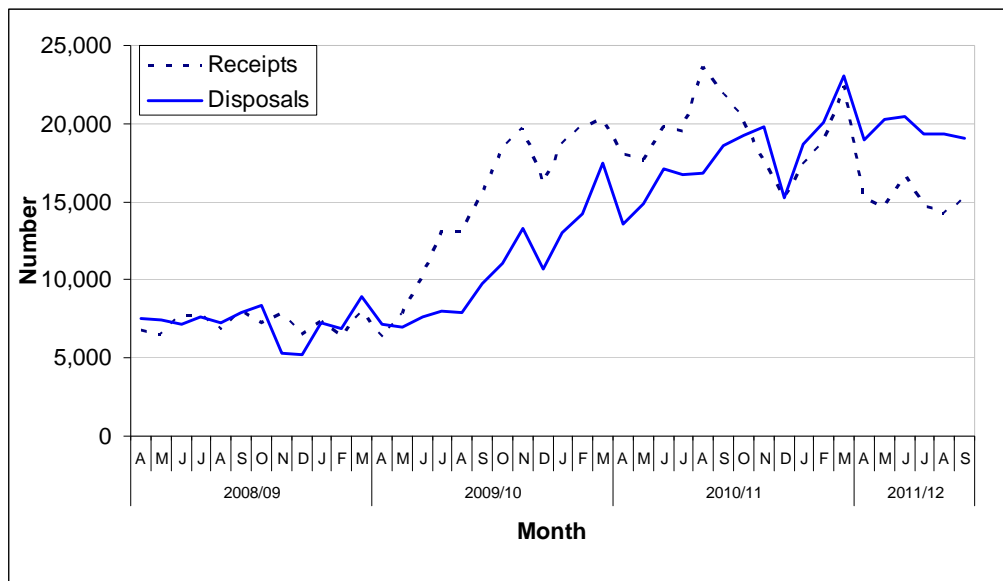
⁴ This may be partly as a result of no new Incapacity Benefit claims being accepted from February 2011.

- Tax Credit receipts increased by 43% to 2,000;
- Carers Allowance receipts increased by 40% to 1,000;
- Job Seekers Allowance receipts increased by 20% to 24,400;
- Industrial Injuries Disablement Benefit (IIDB) fell by 43%, from 4,800 to 2,700;
- Income Support fell by 33%, from 8,000 to 5,400;
- Child Benefit Lone Parent fell by 33% from 980 to 650.

9. In the period 1 April to 30 September 2011, 117,300 ESA/IB cases were disposed of – 54% of all SSCS disposals for that period. This is 20% greater than the number in April to September 2010 (97,800) and 147% higher than the number in the same period in 2009 (47,500).

10. The number of ESA/IB disposals has been generally increasing since June 2009. Disposals in September 2011 (19,100) were 2% higher than in September 2010 (18,600) and 95% more than in September 2009 (9,800). The number of ESA/IB disposals has outstripped receipts for each of the past eleven consecutive months.

Figure 2: ESA/IB Receipts and Disposals from April 2008 to September 2011



Source: SSCS monthly returns

Outcome of hearings (Table 2.2)

11. Table 2.2 provides some information on the outcome of Social Security and Child Support cases that were cleared at hearing⁵, and whether the decision was found in favour of the appellant or if the original decision made by DWP was upheld. In the period 1 April to 30 September 2011, there were 168,500 hearing clearances. Of these, 35% were found in favour of the appellant, but there was some variation in that proportion by benefit type:

- 39% of ESA/IB decisions in favour of the appellant;
- 39% of DLA/AA;
- 27% of Income Support;
- 15% of JSA; and
- 7% of Social Fund.

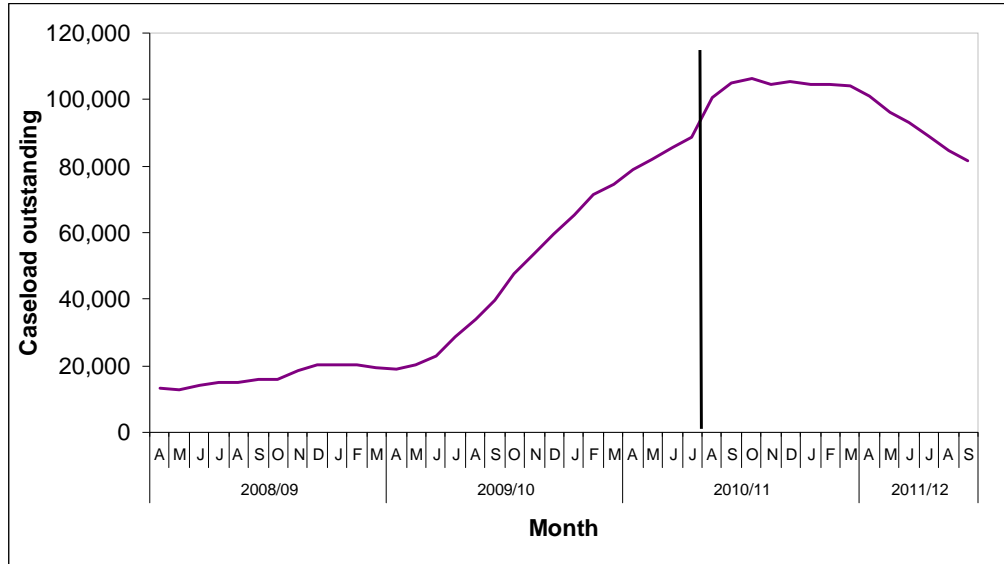
Caseload Outstanding (Table 3.1)

12. At 30 September, 2011, the caseload outstanding was 162,700, a decrease of 3% on the number at 31 August 2011 (168,400) and 11% lower than at 30 September 2010 (182,600). Although this is the seventh decrease in the last eight months, the caseload outstanding is still 90% higher than the 85,400 outstanding at 30 September 2009. Over half of the outstanding caseload is for ESA and IB cases. There were 81,700 ESA and IB cases outstanding at 30 September 2011, compared to 84,800 in August 2011 and 105,200 at 30 September 2010.

13. Figure 3 shows significant rises in the caseload outstanding (for the "04 Tribunal Category/ ESA/IB") around the time that receipts of ESA/IB started to increase. Since the start of the year ESA/IB outstanding has continued to fall.

⁵ These are cleared via a Tribunal (could be a panel or a member of the Judiciary sitting alone) with a decision/outcome.

Figure 3: Caseload Outstanding for “04 Tribunal Category/ESA/IB” from April 2008 to September 2011⁶



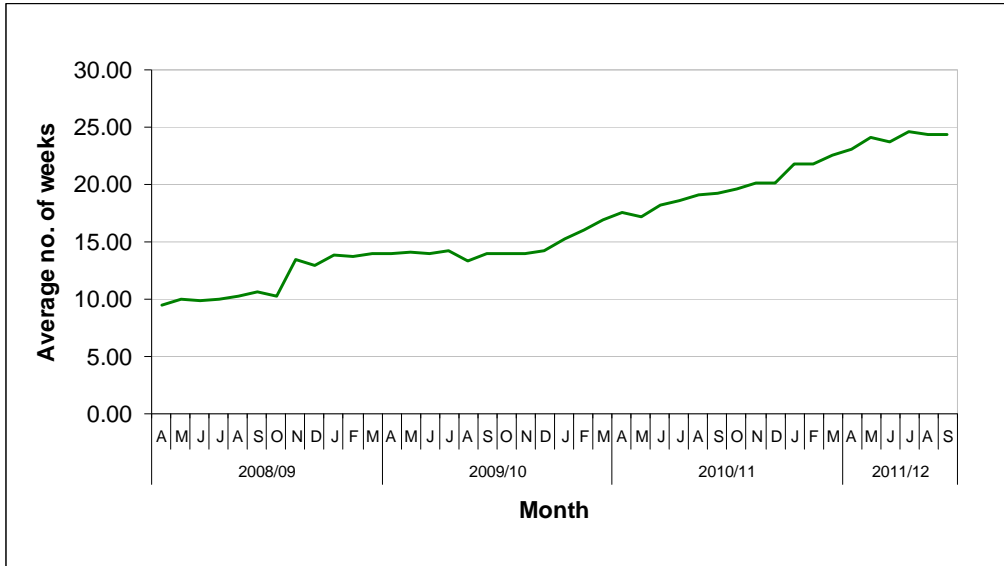
Source: SCS monthly returns

Timeliness

14. A measure of timeliness has been examined showing the average amount of time (in weeks) taken from receipt at the tribunal to clear or dispose of a case. Figure 4 shows that the average clearance time has been increasing over the last couple of years. In September 2011, this average was 24.3 weeks for all benefits combined, a decrease from the position held in August 2011 of 24.4. The average clearance time for ESA/IB cases was 25.1 weeks in September 2011. Individually, the average clearance time for ESA cases was 24.2 weeks, IB cases 32.6 weeks, DLA 28.2 weeks and JSA cases 14.3 weeks for September 2011.

⁶ There is a discontinuity in the data series. All ESA/IB outstanding caseload captured from August 2010. Prior to this date some cases were dealt with as Category 01 and are not included.

Figure 4: Average Clearance time for all SCS disposals from April 2008 to September 2011



Source: SCS monthly returns

Explanatory notes

Data quality and sources

Information presented in this report is drawn from administrative sources. It should be noted that some information contained in this notice is provisional management information and may be amended when Official Statistics are published. Care should be taken when examining monthly trends as there will be some seasonality in the data.

Definitions

Receipt – Volumetric term covering the acceptance of a case within Her Majesty's Courts and Tribunals Service.

Disposal – A disposal is the closure of a case when work has ceased to be done. This can be through a claim being withdrawn, settled, dismissed or being heard at a hearing.

Hearing clearance – these are cleared via a Tribunal (could be a panel or member of the Judiciary sitting alone) with a decision/outcome.

Non-hearing clearance – these are cases withdrawn prior to a hearing, struck out or superseded. There are some Tribunal judgements (some go the judge who decides that they should be struck out).

Hearing – The hearing is a meeting at which the tribunal panel considers evidence (either orally or paper based) and reaches a decision (where the decision may be to adjourn or to agree a final outcome). If the hearing is adjourned and restarted, it counts as one hearing.

Examples of hearings include:

- Paper hearings;
- Oral hearings;
- Case Management Discussions;
- Decision on Eligibility.

Oral Hearing – A hearing where the party(ies) and/or their representative(s) have been invited to attend (this can be by telephone or by video conference).

Paper Hearing – Consideration of the case using documents, and not requiring any physical appearance by the parties.

Decision in favour – Decision in favour of the appellant.

Decision upheld – Decision made by the First Tier Agency (Department of Work and Pensions) upheld by the Tribunal.

Withdrawal – The applicant/claimant/apellant ceases action either before or at the hearing.

Settlement – Cases settled without the need for a hearing. A third party may have been involved in the process.

Outcome of hearing – The outcome of the hearing is the final determination of the proceedings or of a particular issue in those proceedings.

Caseload outstanding – The number of cases outstanding at the end of the period and still waiting to be dealt with to completion.

Contact points for further information

Current and previous editions of this publication are available for download at <http://www.justice.gov.uk/publications/statistics-and-data/tribunals/sscs-stats.htm> .

Spreadsheet files of the tables and graphs contained in this document are also available for download from this address.

Press enquiries should be directed to the Ministry of Justice press office:

Email: press.office@justice.gsi.gov.uk

Other enquiries about these statistics should be directed to:

HM Courts and Tribunals Service

Performance, Analysis and Reporting Team

4th Floor

Taylor House

88 Rosebery Avenue

London EC1R 4QU

Email: tsstats@hmcts.gsi.gov.uk

General enquiries about the statistical work of the Ministry of Justice can be e-mailed to: statistics.enquiries@justice.gsi.gov.uk

General information about the official statistics system of the UK is available from www.statistics.gov.uk

© Crown copyright
Produced by the Ministry of Justice

Alternative format versions of this report are available on request from
tsstats@hmcts.gsi.gov.uk

Table 1.1 SSCS Receipts by Benefit Type

Rounded Numbers

Benefit	2009-10					2010-11					2011-12 ^P				
	Q 1	Q 2	Q 3	Q 4	Total	Q1	Q2	Q3	Q4	Total	Q1 ^{P,r}	Jul 2011 ^P	Aug 2011 ^P	Sept 2011 ^P	YTD ^P
Attendance Allowance	790	1,000	980	1,100	3,900	870	1,100	1,100	1,100	4,200	950	340	380	360	2,000
Disability Living Allowance	15,900	16,900	18,800	20,100	71,700	17,300	21,000	21,400	19,900	79,400	17,800	6,600	7,100	7,100	38,600
Bereavement Benefit	140	140	150	120	530	120	110	140	120	500	140	38	17	34	230
Carer's Allowance	260	380	260	210	1,100	310	440	420	460	1,600	510	200	190	160	1,000
Child Benefit Lone Parent	340	490	350	420	1,600	340	640	480	500	1,900	330	110	100	110	650
Child Support Allowance	1,100	1,000	940	1,100	4,200	940	930	920	940	3,700	820	310	300	350	1,800
Credits (Other)	0	0	0	0	0	0	-	-	-	5	-	0	0	0	-
Tax Credits	390	340	300	550	1,600	710	720	670	930	3,000	880	330	430	410	2,000
COEG	-	-	-	0	-	-	-	-	0	-	0	0	0	-	-
Compensation Recovery Unit	83	73	120	94	370	75	87	100	100	370	96	30	48	34	210
Housing/Council Tax	3,100	3,200	3,100	3,100	12,500	3,100	3,300	3,000	3,000	12,300	2,700	1,000	1,100	920	5,700
Disability Working Allowance	-	0	0	-	-	0	0	-	0	-	0	0	0	-	-
Employment Support Allowance	10,100	29,000	41,100	46,500	126,800	46,000	55,700	44,800	50,800	197,400	42,900	14,500	14,000	15,000	86,400
Health in Pregnancy Grant	0	120	270	220	610	120	93	50	130	390	80	9	-	-	95
Home Responsibilities Protection	-	-	12	10	25	7	6	-	9	25	-	-	-	0	-
Incapacity Benefit	14,200	12,600	13,100	12,200	52,200	9,400	9,100	8,000	7,700	34,300	3,600	310	190	170	4,300
Income Support	3,900	4,100	3,800	4,200	16,000	3,900	4,000	4,000	3,100	15,100	2,600	850	950	950	5,400
Industrial Death Benefit	0	0	-	-	-	-	0	0	0	-	-	0	0	0	-
Industrial Injuries Disablement Benefit	1,700	1,100	1,800	2,700	7,300	2,600	2,200	2,300	2,100	9,200	1,400	470	480	370	2,700
Job Seekers Allowance	6,900	7,300	7,600	9,300	31,100	8,800	11,500	12,900	13,800	47,000	12,700	4,000	4,200	3,500	24,400
Lookalikes	0	-	-	-	-	-	-	-	-	8	-	0	0	0	-
Maternity Benefit/Allowances	67	64	54	69	250	57	71	57	48	230	51	11	11	16	89
Others (Extinct/Rare Benefits)	16	19	31	14	80	37	58	33	16	140	18	-	5	-	30
Penalty Proceedings	0	0	0	0	0	-	0	0	-	-	0	0	0	0	0
Pension credit	400	370	460	460	1,700	330	360	390	530	1,600	570	150	150	150	1,000
Retirement Pension	250	160	190	220	810	220	190	270	280	960	190	64	82	59	400
Severe Disablement Benefit/Allowance	33	32	29	36	130	26	23	42	39	130	28	-	8	5	43
Social Fund	1,400	1,200	970	1,100	4,700	1,300	1,000	1,200	1,400	4,800	1,600	600	740	580	3,500
Vaccine Damage Appeals	0	-	-	-	6	-	-	-	-	7	-	-	-	0	5
Total	61,100	79,800	94,600	103,800	339,200	96,500	112,600	102,500	106,900	418,500	90,000	30,000	30,400	30,300	180,700

Source: SSCS Quarterly Reconciled Returns/SSCS GAPS 2 database

Figures may not add to totals because of rounding

. Not applicable

.. Not available

- Small Value

0 Nil

(r) Revised data

(p) Provisional data

Table 2.1 SSCS Disposals by Benefit Type

Rounded Numbers

Benefit	2009-10					2010-11					2011-12				
	Q 1	Q 2	Q 3	Q 4	Total	Q1	Q2	Q3	Q4	Total	Q1 ^(r)	Jul 2011 ^(p)	Aug 2011 ^(p)	Sept 2011 ^(p)	YTD ^(p)
Attendance Allowance	880	920	910	840	3,500	850	860	850	1,000	3,600	1,100	410	460	380	2,400
Disability Living Allowance	17,500	17,000	15,500	15,500	65,400	15,600	16,300	15,100	18,200	65,100	19,700	7,600	8,200	7,500	43,000
Bereavement Benefit	120	150	130	120	520	110	100	110	150	480	120	33	45	37	240
Carer's Allowance	320	340	280	260	1,200	220	340	370	400	1,300	430	160	170	180	940
Child Benefit Lone Parent	450	450	380	370	1,700	350	450	480	510	1,800	460	130	130	110	830
Child Support Allowance	1,200	1,200	1,000	880	4,300	860	870	860	990	3,600	920	400	320	360	2,000
Credits (Other)	0	0	0	0	0	0	0	-	-	-	-	0	0	0	-
Tax Credits	320	430	330	350	1,400	510	700	730	860	2,800	840	280	300	310	1,700
COEG	0	0	-	-	-	0	0	0	-	-	-	0	-	0	-
Compensation Recovery Unit	96	88	89	86	360	71	79	100	88	340	89	41	51	32	210
Housing/Council Tax benefit	3,300	3,300	3,100	3,200	12,900	2,800	3,100	3,100	3,300	12,300	2,900	980	1,100	1,100	6,000
Disability Working Allowance	0	-	0	0	-	0	0	-	-	-	0	0	-	0	-
Employment Support Allowance	2,300	11,200	23,400	33,600	70,500	35,500	42,700	45,900	52,500	176,600	51,000	16,900	17,000	17,100	102,000
Health in Pregnancy Grant	0	50	140	230	420	160	130	83	120	480	100	27	21	16	160
Home Responsibilities Protection	-	-	-	10	16	7	11	-	10	30	7	0	-	0	9
Incapacity Benefit	19,500	14,400	11,600	11,200	56,800	10,100	9,500	8,400	9,400	37,400	8,600	2,400	2,300	2,000	15,300
Income Support	5,300	4,700	4,000	3,800	17,700	3,500	3,900	4,100	4,300	15,700	3,400	1,000	1,100	1,100	6,700
Industrial Death Benefit	0	0	0	0	0	-	-	0	0	-	0	0	0	0	0
Industrial Injuries Disablement Benefit	1,700	1,700	1,300	1,400	6,000	1,900	2,100	2,000	2,100	8,100	2,100	620	720	740	4,200
Job Seekers Allowance	6,900	7,600	6,900	7,500	28,800	7,700	10,000	11,400	14,000	43,100	13,100	4,300	4,500	4,500	26,400
Lookalikes	0	0	-	-	-	-	-	0	-	6	-	0	0	0	-
Maternity Benefit/Allowances	65	68	54	54	240	58	69	60	47	230	65	12	14	14	110
Others (Extinct/rare Benefits)	23	21	14	20	78	18	15	28	18	79	21	8	8	6	43
Penalty Proceedings	0	0	0	0	0	0	0	-	0	-	0	0	-	0	-
Pension Credit	430	420	370	430	1,600	360	390	430	480	1,700	530	160	190	180	1,100
Retirement Pension	260	220	160	200	850	190	190	210	270	870	230	60	96	64	450
Severe Disablement Benefit/Allowance	41	32	24	22	120	27	27	36	28	120	30	16	13	15	74
Social Fund	1,400	1,300	990	980	4,700	1,000	1,200	1,000	1,300	4,500	1,300	530	630	650	3,100
Vaccine Damage Appeals	-	0	-	-	-	0	-	-	-	8	-	0	0	0	-
Total	62,100	65,600	70,500	81,000	279,300	81,800	93,000	95,300	110,100	380,200	107,200	36,000	37,400	36,400	217,000

Source: SSCS Quarterly Reconciled Returns/SSCS GAPS 2 database

Figures may not add to totals because of rounding

. Not applicable

.. Not available

- Small Value

0 Nil

(r) Revised data

(p) Provisional data

Table 2.2 SCS Hearing Outcomes by Benefit Type ¹

Rounded Numbers/Percentage

Benefit	2010-11															2011-12											
	Quarter 1			Quarter 2			Quarter 3			Quarter 4			2010-11 Total			Q1 ^{P,r}			July 2011 ^P			August 2011 ^P			September 2011 ^P		
	Cleared at Hearing	Decision in Favour ²	Decision Upheld ³	Cleared at Hearing	Decision in Favour ²	Decision Upheld ³	Cleared at Hearing	Decision in Favour ²	Decision Upheld ³	Cleared at Hearing	Decision in Favour ²	Decision Upheld ³	Cleared at Hearing	Decision in Favour ²	Decision Upheld ³	Cleared at Hearing	Decision in Favour ²	Decision Upheld ³	Cleared at Hearing	Decision in Favour ²	Decision Upheld ³	Cleared at Hearing	Decision in Favour ²	Decision Upheld ³	Cleared at Hearing	Decision in Favour ²	Decision Upheld ³
	%	%	%	%	%	%	%	%	%	%	%	%	%	%	%	%	%	%	%	%	%	%	%	%	%	%	%
Attendance Allowance	600	24	74	580	24	74	550	22	76	670	26	73	2,400	24	74	840	25	74	300	23	75	320	28	71	270	27	72
Disability Living Allowance	12,500	39	59	12,700	38	61	11,600	38	61	14,100	38	61	50,900	38	60	15,900	39	59	6,200	39	60	6,700	39	59	6,200	40	59
Bereavement Benefit	75	9	91	80	5	95	72	21	78	110	7	93	340	10	90	87	11	89	22	23	77	35	9	91	29	17	83
Carer's Allowance	140	9	91	200	11	87	250	9	91	260	15	85	850	11	88	260	11	88	100	16	81	110	11	89	120	17	82
Child Benefit Lone Parent	210	8	91	260	11	88	300	6	94	330	9	91	1,100	8	91	310	9	90	90	11	89	97	15	85	77	10	90
Child Support Allowance	600	47	51	630	44	53	630	39	58	700	40	57	2,600	42	55	620	41	53	280	43	53	220	37	59	230	36	60
Credits (Other)	0	.	.	0	.	.	0	0	.	.	0	.	.	0	.	.
Tax Credits	300	9	91	440	7	92	420	14	86	470	9	89	1,600	10	89	450	11	88	150	13	87	180	8	91	170	8	90
COEG	0	.	.	0	.	.	0	0	0	.	.
Compensation Recovery Unit	43	37	63	49	41	59	57	42	56	41	29	71	190	38	62	42	52	48	23	39	61	24	63	38	12	58	42
Housing/Council Tax benefit	1,900	27	72	2,000	21	78	2,200	23	76	2,300	22	77	8,300	23	76	1,800	23	77	660	21	79	690	20	80	730	20	79
Disability Working Allowance	0	.	.	0	0	.	.	0	0	.	.
Employment Support Allowance	26,200	39	60	31,000	37	62	31,800	36	63	38,200	38	62	127,100	37	62	40,900	38	62	13,900	37	62	13,800	38	62	13,900	38	62
Health in Pregnancy Grant	91	11	89	72	8	92	58	3	97	66	5	95	290	7	93	65	6	94	21	5	95	15	13	87	9	0	100
HRP	.	.	.	8	0	100	.	.	.	7	0	100	21	0	100	6	17	83	0	0	.	.
Incapacity Benefit	8,400	52	47	7,900	49	50	7,000	48	52	7,900	50	49	31,200	50	50	7,400	50	50	2,200	52	47	2,100	51	49	1,900	52	48
Income Support	2,300	32	67	2,600	26	73	2,700	28	70	3,000	27	72	10,500	28	71	2,300	28	71	700	29	70	740	23	74	760	26	72
Industrial Death Benefit	0	.	.	0	0	.	.	0	.	.	0	.	.	0	.	.
Industrial Injuries Disablement Benefit	1,400	37	60	1,700	32	64	1,500	34	62	1,600	35	62	6,300	35	62	1,800	33	65	520	33	65	630	37	61	620	32	63
Job Seekers Allowance (JSA)	4,700	15	84	6,300	12	88	7,500	14	86	9,000	13	87	27,500	13	86	8,400	14	85	2,800	15	85	2,900	16	83	2,800	17	83
Lookalikes	0	5	40	60	.	.	.	0	.	.	0	.	.	0	.	.
Maternity Benefit/Allowances	41	15	85	38	13	87	38	11	89	32	6	94	150	11	89	43	2	95	6	0	100	8	13	87	6	0	100
Others (Extinct/rare Benefits)	8	38	63	11	45	55	24	29	58	11	36	64	54	35	59	11	27	55	0	.	.
Penalty Proceedings	0	.	.	0	0	0	.	.	0	0	.	.
Pension Credit	230	20	78	260	23	76	270	32	68	280	19	79	1,000	23	75	260	25	74	88	31	69	100	23	77	110	20	79
Retirement Pension	130	8	92	120	3	97	150	7	92	200	10	89	600	7	92	160	7	91	44	14	84	66	3	97	41	5	95
Severe Disablement Benefit/Allowance	21	38	62	24	38	63	22	45	50	21	24	76	88	36	63	20	35	65	13	38	62	10	40	60	7	71	29
Social Fund	700	10	90	910	11	89	750	9	91	920	8	92	3,300	9	91	940	8	91	380	5	95	420	6	93	480	8	92
Vaccine Damage Appeals	0	6	17	83	.	.	.	0	.	.	0	.	.	0	.	.
Total	60,500	38	61	67,800	34	65	67,800	33	66	80,300	34	65	276,400	35	64	82,500	35	64	28,500	35	64	29,100	35	64	28,400	35	64

Source: SCS Quarterly Reconciled Returns/SCS Gaps 2 database

Source:

Figures may not add to totals because of rounding

. Not applicable

.. Not available

- Small Value

p Provisional

¹ Cases cleared at hearing include some withdrawals.

² Decision in favour of the appellant

³ Decision made by 1st Tier Agency upheld by the Tribunal

Table 3.1 SSCS Caseload Outstanding¹

Rounded Numbers

	2009-10				2010-11				2011-12 ^P			
	Q1	Q2	Q3	Q4	Q1	Q2	Q3	Q4	Q1 ^P	Jul 2011 ^P	Aug 2011 ^P	Sept 2011 ^P
Social Security and Child Support	68,500	85,400	112,600	138,800	158,400	182,600	193,400	194,200	179,700	174,400	168,400	162,700

Source: SSCS Gaps 2 database

Figures may not add to totals because of rounding

- . Not applicable
- .. Not available
- Small Value

0 Nil

(r) Revised data

(p) Provisional data

¹ As on the last day of the period