



Ministry of
JUSTICE



HM Courts
& Tribunals
Service

Quarterly Tribunals Statistics

1 July to 30 September 2011

12 January 2012

Contents

Introduction	4
Key Findings	5
Commentary	8
Table conventions	22
Annex 1 – HM Courts and Tribunals Service	23
Explanatory Notes	24
Data quality and sources	25
Definitions	26
Contact points for further information	29

Tables

Table 1.1 Tribunals receipts by quarter and by Jurisdiction

Table 1.1a Employment Tribunals receipts by quarter and Jurisdiction

Table 1.1b First-tier Tribunal (Immigration and Asylum Chamber) receipts by quarter and case type

Table 1.1c Social Security and Child Support receipts by quarter and benefit type

Table 1.2 Tribunals disposals by quarter and Jurisdiction

Table 1.2a Employment Tribunals disposals by quarter and Jurisdiction

Table 1.2b First-tier Tribunal (Immigration and Asylum Chamber) disposals by quarter and case type

Table 1.2c Social Security and Child Support disposals by quarter and type of benefit

Table 1.2d Social Security and Child Support outcomes by quarter and type of benefit

Table 1.2e First-tier Tribunal (Immigration and Asylum Chamber) outcomes by quarter and case type

Table 1.3 Tribunals Caseload Outstanding by quarter and Jurisdiction

Table 1.4 Tribunals Performance Indicators by quarter and Jurisdiction

Table 2.1 Special Educational Needs and Disability Discrimination receipts and disposals by academic year.

Tables 3.1 to 3.7 Special Educational Needs and Disability (SEND) workload, outcomes and representation

Tables 4.1 to 4.6 SEND Disability Discrimination workload, outcomes and representation

Appendix 1 SEND Appeals Registered by Local Authority

Introduction

This report presents information on Tribunals activity for 1 July to 30 September 2011). Information for the same quarter of earlier years is also presented. It features a section on the workloads and performance of the Special Educational Needs and Disability tribunal, replacing previous annual reports for this tribunal.

Quarterly Official Statistics for Tribunals, for all four quarters of 2010-11 (1 April 2010 to 31 March 2011) and for 1 April to 30 June 2011 have been published and are available at: www.justice.gov.uk/publications/statistics-and-data/tribunals/quarterly.htm.

Annual Official Statistics for Tribunals for 2010-11 have been published. The report is available at www.justice.gov.uk/publications/statistics-and-data/tribunals/annual-stats.htm.

Statistics for Employment Tribunals and Employment Appeal Tribunal activity for 2010-11 were published on 3 September 2011 in "Employment Tribunal and EAT statistics 2010-11". This publication is available at: www.justice.gov.uk/publications/statistics-and-data/tribunals/employment-tribunal-and-eat-statistics-gb.htm

Statistics on the work of the civil, family, magistrates' and Crown Courts in England and Wales during the period 1 July to 30 September 2011 are also published by the MoJ at the same time as this report. These quarterly courts statistics, along with annual statistics, can be found in separate reports on the MoJ website, at: www.justice.gov.uk/publications/statistics-and-data/courts-and-sentencing/index.htm

Key Findings

All Tribunals Combined

- The statistics for the quarter July to September 2011 include, for the first time, figures for the Residential Property Tribunal (RPT), which joined HMCTS on 1 July 2011. Figures for earlier quarters do not include RPT information. In this report, changes compared to earlier periods are made excluding RPT figures, so that the comparisons are on a like-with-like basis.
- Between July and September 2011, there were 180,400 receipts or cases. Excluding the RPT, receipts fell by 19 per cent over the same quarter of the previous year, and a ten per cent drop on the number in the same quarter of 2009-10. There were 187,800 disposals in July to September 2011. When the RPT is excluded, this was an increase of three per cent on the same quarter of 2010-11 and 16 per cent on that for 2009-10.
- For all tribunals combined, the caseload outstanding was 742,800, 64 per cent of this was for multiple Employment Tribunals claims. The caseload outstanding fell by around 10,000 (when RPT outstanding caseload was excluded) on the amount at 30 June 2011, but was still five per cent higher than it was on 30 September 2010. For some Tribunals, the caseload outstanding fell in the last year by: 26 per cent for Immigration and Asylum; 11 per cent for Social Security and Child Support; nine per cent for single Employment Tribunal cases; 16 per cent for Mental Health; and by 21 per cent for Criminal Injuries Compensation. The caseload outstanding increased for some tribunals, including Financial Services and Markets and Pensions Regulator and Tax (First Tier) tribunal.

Social Security and Child Support

- Social Security and Child Support (SSCS) appeals jurisdiction, part of the First Tier Tribunal arranges and carries out independent hearings for appeals on decisions made by the Department for Work and Pensions (including Jobcentre Plus, Child Support Agency and Disability and Carers Service), as well as other government departments (HM Revenue and Customs) and local authorities.
- There were 90,700 receipts to SSCS between July and September 2011, a decrease of 20 per cent compared to the same quarter of 2010-11. This was a 14 per cent increase compared to the July to September quarter of 2009-10.
- There were 111,500 disposals made by SSCS - a 20 per cent increase compared to the July to September quarter of 2010-11 and a 70 per cent increase when compared with the same quarter of 2009-10.
- There were 87,700 SSCS hearing clearances (those cases disposed of at hearing) during July to September 2011, a 29 per cent increase on the number in the same quarter of 2010-11.

- There was an 11 per cent increase in the number of disposals associated with Employment Support Allowance (ESA) and Incapacity Benefit (IB).

Employment Tribunals

The Employment Tribunals are independent judicial bodies who determine disputes between employers and employees over employment rights.

- Between July and September 2011, Employment Tribunals received 40,300 cases, a 30 per cent decrease in overall claims to Employment Tribunals, compared to the same quarter of the previous year. The number of single claims decreased slightly, whilst the number of multiple claims went down by 41 per cent and was affected by the number of re-submitted airline cases received in July to September 2010.
- In July to September 2011, there were 26,700 disposals made by the Employment Tribunals¹, a 16 per cent fall compared to the same quarter of the previous year. The number of single disposed cases fell by four per cent and multiple disposed cases fell by 27 per cent.

First Tier Immigration and Asylum Tribunal

All references to Immigration and Asylum refer to the First-tier Tribunal (Immigration and Asylum Chamber). It is an independent Tribunal dealing with appeals against decisions made by the Home Secretary and his officials in immigration, asylum and nationality matters.

- Compared to the same quarter of 2010-11, there was a fall of 11 per cent in overall numbers of Immigration and Asylum receipts to 32,200 during July to September of 2011. The overall fall in receipts was reflected in all case types, with receipts for Asylum² dropping by 21 per cent and those for Family Visit Visa³ reducing by 16 per cent.
- The number of Immigration and Asylum disposals was 32,700 between July and September 2011, 20 per cent fewer than in the same quarter of 2010-11.

Special Educational Needs and Disability

Parents whose children have special educational needs can appeal to the First-tier Tribunal (Special Educational Needs and Disability) against decisions made by Local Authorities in England about their children's education.

¹ There may be a small undercount due to change of computer system during the year.

² Appeals against a refusal to grant asylum, including asylum claims which raise Human Rights grounds.

³ Appeals against decisions not to allow temporary visits to see family in the UK.

- In the academic year 2010-11, there were 3,600 Special Educational Needs (SEN) appeals, a nine per cent increase on the number registered in the previous year.
- There were 3,900 SEN disposals in the academic year 2010-11, a 32 per cent increase on those in the previous year.

Commentary

Receipts (Table 1.1)

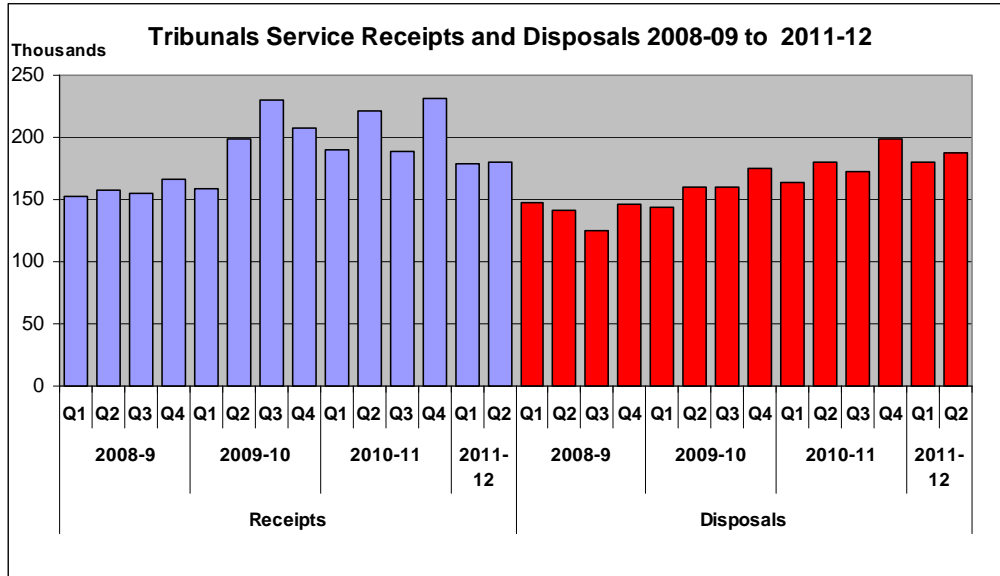
1. The statistics for the quarter July to September 2011 include, for the first time, figures for the Residential Property Tribunal (RPT), which joined HM Courts and Tribunals Service on 1 July 2011. Figures for earlier quarters do not include RPT information. In this report, changes compared to earlier periods are made excluding RPT figures, so that the comparisons are on a like-with-like basis.

2. During the period 1 July to 30 September, Tribunals had 180,400 receipts. Excluding the RPT, receipts fell by 19% on the number received in the second quarter of 2010-11, and fell by 10% on the number received in the same quarter of 2009-10. The fall in the number of receipts was seen in most Tribunals. Compared with the same period of 2010-11, the number of recent receipts went down in Social Security and Child Support (SSCS) – by 20% and in Asylum and Immigration by 11%. There was an apparent drop in the number of cases received by Employment Tribunals (ET) by 30% overall (attributed to multiple cases⁴ and the fact that the July to September period of 2010-11 included a large number of resubmitted multiple airline cases). There was a 12% rise for Mental Health receipts and notable increases in receipts for Employment Appeal Tribunal; Information Rights and Tax (First Tier).

3. Excluding multiple claims to Employment Tribunals (which vary from year to year and can distort the picture on workload) and receipts to the Residential Property Tribunal, there was a 14% fall in the number of receipts in July to September 2011 as compared with the same period in 2010.

⁴ Multiple cases are where two or more people bring cases, involving one or more jurisdiction(s) usually against a single employer but not necessarily so, for instance in Transfer of Undertakings (Protection of Employment) Regulations (TUPE) cases, and always arising out of the same or very similar circumstances. As a multiple, the cases are processed together.

Figure 1: Receipts for all Tribunals, 2008-09 to 2011-12

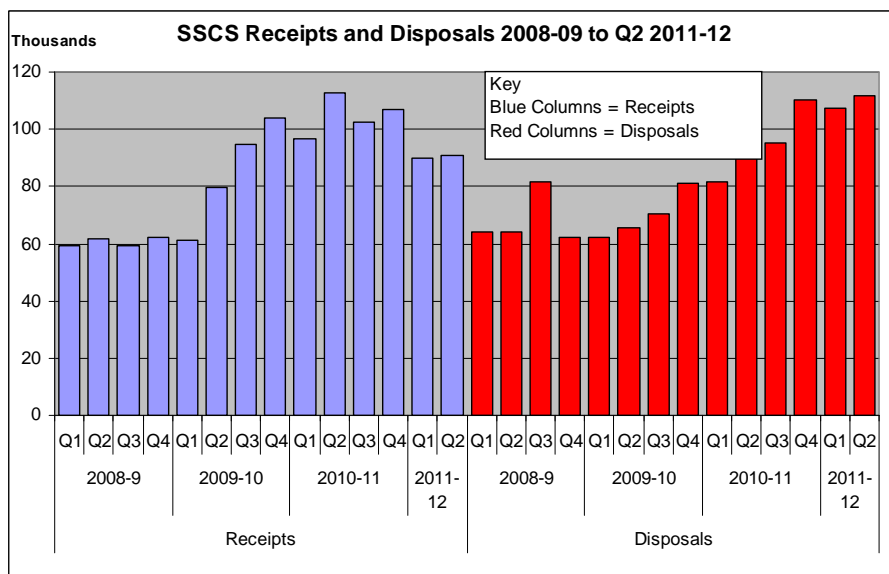


Source: Tribunals quarterly returns

Receipts by Jurisdiction

4. For SSCS, there were 90,700 receipts between July and September 2011 – representing around half of cases received by all Tribunals. When compared with the same quarter in previous years, the number of receipts was 20% fewer than in 2010-11, but 14% more than in the same period of 2009-10.

Figure 2: Social Security and Child Support Receipts, 2008-09 to 2011-12



Source: Tribunals quarterly returns

5. Of the 90,700 cases received by SSCS during April to June 2011, 49% were for Employment Support Allowance (ESA)/Incapacity Benefit (IB); 24% for Disability Living Allowance (DLA)/Attendance Allowance (AA); and 13% for Job Seeker's Allowance (JSA). After a rising trend, the number of receipts of ESA/IB cases fell by 32% to 44,200 compared to the same quarter last year. This was as a result of a large falls in the number of Employment Support Allowance receipts (from 55,700 in July to September of 2010, as compared with 43,500 for the same time in 2011). There was also a significant fall in the number of Incapacity Benefit appeals (from 9,100 in July to September 2010 to 660 in July to September 2011) as no new benefit claimants to Incapacity Benefit have been accepted since February 2011 (with all new claims relating to ESA) .

6. Examining receipts in the second quarter between 2010-11 and 2011-12, those for Social Fund have risen by 92%; Tax credits have gone up by 61%; Carer's Allowance has gone up 24%; and Pensions credit have risen by 23%. Receipts for Industrial Injuries Disablement Benefit have fallen by 39% and those for Income Support by 32%.

7. In Employment Tribunals (ET), the number of receipts (claims) between 1 July and 30 September 2011 was 40,300 – 30% fewer than in the same quarter of 2010-11, and 35% fewer than for the quarter in 2009-10. The apparent fall was due to the increased number of multiple receipts (including resubmitted airline and Wages Act cases) received in the July to September quarter of 2010-11. This means that the number of multiple receipts in July to September of 2011-12 has fallen by 41% to reach 25,000. The total number of ET claims is dependent upon multiple receipts, which are highly variable in nature. The number of single claims fell slightly by 1% from 15,400 from 1 July to 30 September 2010, to 15,200 for the same period of 2011-12.

8. For ET, when the jurisdictional⁵ mix of claims is considered (Table 1.1a), there were 75,500 jurisdictional complaints received from 1 July – 30 September 2011 (a fall of 30% on the same quarter in 2010-11, with the numbers again affected by the resubmitted multiple claims made in the second quarter of 2010-11. Of the total number of jurisdictional complaints received, 35% were for unfair dismissal, redundancy and breach of contract; 18% were for unauthorised deductions (formerly the Wages Act); 16% were for Equal Pay and 15% for Working Time Directive.

9. When comparing the July to September quarter of 2010-11 with that of 2011-12, the number of jurisdictional claims associated with Working Time Directive (including resubmitted airline cases) went down by 57% (from 27,000 to 11,600), as a result of a large number of resubmitted airline cases entered onto systems in July-September 2010. Those for Sex discrimination, Age discrimination and Redundancy (failure to inform and consult), fell by 72%, 42% and 29% respectively. Over the same time period, there was a 49% rise

⁵ A claim can contain a number of grounds, known as jurisdictional complaints. In any hearing, the tribunal has to decide upon the merits of the claim made under each jurisdiction

in jurisdictional claims associated with suffer a detriment/unfair dismissal - pregnancy.

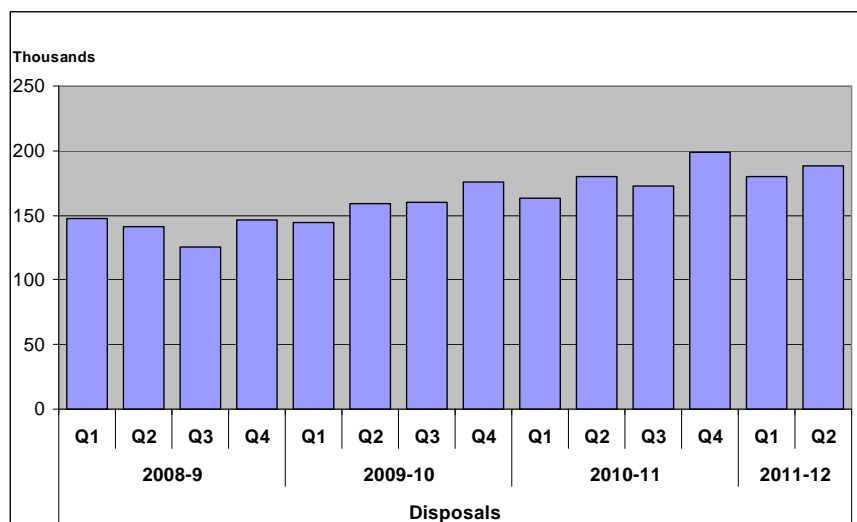
10. In the First Tier Immigration and Asylum Chamber, there were 32,200 receipts in July to September 2011 – an 11% fall when compared with the same quarter of 2010-11 and a 23% fall compared to that quarter in 2009-10. The overall fall in receipts was reflected in all case types, with receipts for Family Visit Visa falling by 16% and those for Asylum reducing by 21%.

Disposals (Table 1.2)

11. From July to September 2011, there were a total of 187,800 cases or claims that were disposed of. Excluding data for the Residential Property Tribunal, this is an increase of 3% when compared with the same quarter of 2010-11 and 16% on that of 2009-10.

12. The rise in the number of disposals was seen in Social Security and Child Support Appeals (up by 20%). There were also some rises in disposals in other tribunals such as Tax First Tier (up by 19%); Mental Health (up by 8%) and Special Educational Needs and Disability (up by 7%). This was a result of this year's introduction of a fast-track system in Special Educational Needs and Disability for all appeals involving secondary school transfers, and, in Mental Health, an increase in receipts including Section 2 receipts which are heard within seven days.

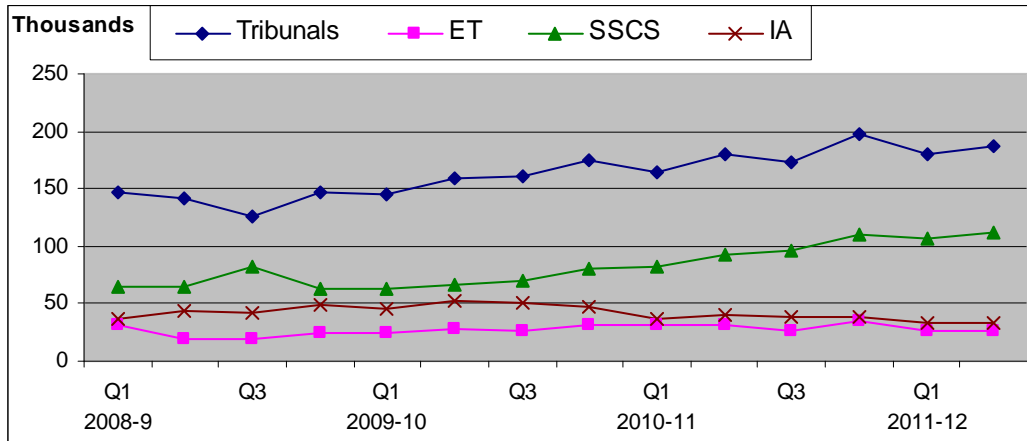
Figure 3: Disposals for all Tribunals, 2008-09 to 2011-12



Source: Tribunals quarterly returns

Disposals by Jurisdiction

Figure 4: Disposals by jurisdiction, 2008-09 to 2011-12



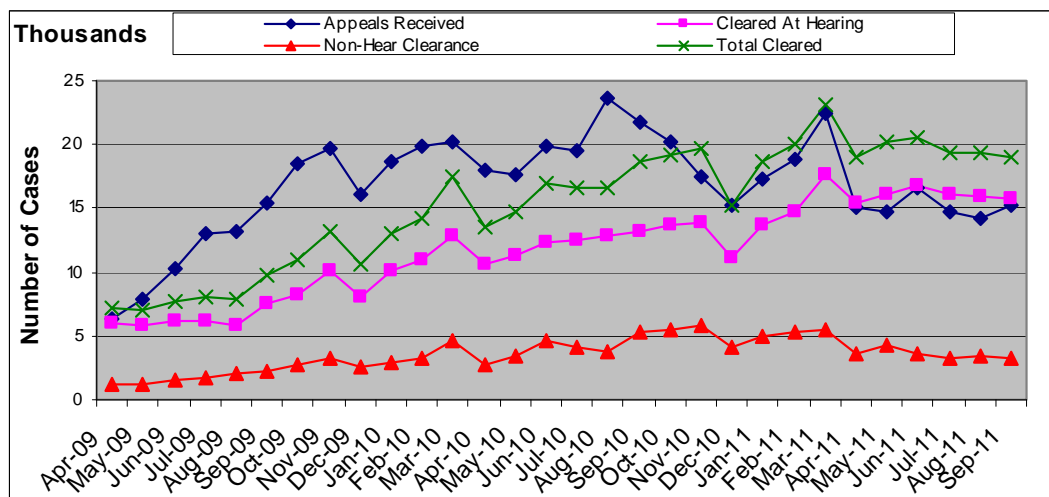
Source: Tribunals quarterly returns

13. SSCS disposed of a total of 111,500 cases in July to September of 2011, 20% more than for the same period of the 2010-11 year and 70% more than for the same quarter of 2009-10. The number of disposals by SSCS has generally been increasing since the first quarter of 2009-10.

14. Of the 111,500 cases disposed of: 58,000 (52%) were for Employment Support Allowance (ESA)/Incapacity Benefit (IB); 24,500 (22%) were related to Disability Living Allowance (DLA)/Attendance Allowance (AA) and 14,200 (13%) were for Job Seeker's Allowance (JSA).

15. The rise in SSCS receipts over recent years has generally been in response to the introduction, in October 2008, of Employment Support Allowance to replace Incapacity Benefit (and seen in the management information from June 2009 data onwards). Figure 5 shows the change in disposals for ESA/IB benefits throughout 2009-10 to September 2011 that were cleared by having a Tribunal hearing and those that were settled or struck out (non-hearing clearances). When compared with the same period in 2010, the number of disposals for ESA/IB in July to September of 2011 has gone up by 11%.

Figure 5: Receipts and Disposals for Employment Support Allowance and Incapacity Benefit, April 2009 to September 2011



Source: Tribunals quarterly returns

16. When compared with July to September of 2010, there were increases in the number of disposals for a number of types of benefits, with notable rises for: Carer's Allowance (of 51%); AA/DLA (of 43%) and Job Seekers Allowance (of 42%).

17. Table 1.2d provides some information on the outcome of Social Security and Child Support cases that were cleared at hearing⁶ and whether the decision was found in favour of the appellant, or if the original decision made by DWP was upheld. Between 1 July and 30 September 2011, there were 87,700 hearing clearances – a 29% rise on the number in the same quarter of 2010-11. Of these, 35% were found in favour of the appellant. This proportion varied by type of benefit with 53% of Compensation Recovery Unit; 39% of Child Support, 39% of ESA/IB, 39% of DLA/AA and 6% of Social Fund hearing clearances being found in favour of the appellant.

18. During July to September 2011, Employment Tribunals disposed of 26,700 claims – a 16% decrease on the number for the same quarter of 2010-11⁷, and 6% lower than in the same quarter of 2009-10. Compared with July to

⁶ These were cleared via a Tribunal (could be a panel or a member of the Judiciary sitting alone) with a decision/outcome.

⁷ There may be a small undercount in ET disposals during 2010-11 because of changes to computer systems during the year.

September of 2010, both the number of both single and multiple disposed cases fell (by 4% and 27% respectively).

19. Table 1.2a gives details of ET Jurisdictional claims disposed of by type of jurisdiction and outcome. Between 1 July and 30 September 2011, 58,700 jurisdictional claims were disposed of (a small fall from the 59,100 disposed of in the same period of the previous year). There were notable increases in the numbers of disposals associated with Redundancy Pay and Equal Pay, and an increase in Age Discrimination disposals. Of the 58,700:

39% were unfair dismissal, breach of contract or redundancy;

- 17% were associated with unauthorised deductions (Wages Act).

20. Of the total jurisdictions disposed of during July to September 2011:

- 30% were Acas Conciliated; 27% were withdrawn; and 10% were successful at hearing.

21. Overall, in Immigration and Asylum, there were 32,700 disposals in July to September 2011 – 20% fewer than in the same quarter of 2010-11 and 38% fewer than in the same quarter of 2009-10.

22. Comparing July to September of 2010 with that of 2011 by case type (Table 1.2b), there was an 11% increase in the number of disposals for Entry Clearance Officer; a 20% fall in Asylum; a 21% fall for Family Visit Visa and a 39% fall for Managed Migration disposals.

23. Table 1.2e gives outcomes for those Immigration and Asylum cases that were disposed of. Of the 32,700 cases that were disposed of between 1 July and 30 September 2011:

- 14,400 (44%) were dismissed;
- 11,400 (35%) were allowed;
- 7,000 (21%) were withdrawn.

Caseload Outstanding (Table 1.3)

24. At 30 September 2011, the caseload outstanding was 742,800 and includes 2,800 for the newly transferred Residential Property Tribunal (RPT). Excluding the caseload outstanding for RPT, the overall caseload outstanding has fallen by almost 10,000 when compared with that at 30 June 2011.

25. More than three-fifths of the outstanding caseload at the end of the quarter related to 'multiple' claims in Employment Tribunals. Collections of two or more of these cases are grouped and managed together. They are often legally and factually complex and at any point in time it is common for such cases to be 'stayed', meaning that they are not ready to have a final hearing at that time for some reason, for example due to awaiting the decision of an appellate court on case management or other interim matters.

26. For some Tribunals, the caseload outstanding has fallen in the last year – by 26% for Immigration and Asylum; 11% for Social Security and Child Support' 9% for single Employment Tribunal cases, by 16% for Mental Health and by 21% for Criminal Injuries Compensation.

Performance (Table 1.4)

27. The MoJ's Corporate Strategy for 2011-2015 set out how it intended to transform itself and the justice system over the next four years. A commitment was made in the HMCTS Business Plan for 2011-2015 to publish information about the operation of courts and tribunals to assist users to assess the efficiency and effectiveness of public services. Impact indicators were suggested for the four largest tribunals – Social Security and Child Support, Employment Tribunals, Immigration and Asylum and Mental Health.

28. The new measures examine the process from receipt to the point at which the appellant is notified of the outcome of the hearing (or when they are notified of a settlement, withdrawal or strike out) and are thus on a different basis to the former Primary Performance Indicators.

29. HMCTS previously had a set of Primary Performance Indicators for each jurisdiction, which were largely based upon waiting times from receipt to disposal. From April 2011, these are no longer performance indicators but statistics continue to be published in Table 1.4. of this report so that users are able to compare these particular aspects of timeliness over time.

30. When examining the measures, a number of points should be noted:

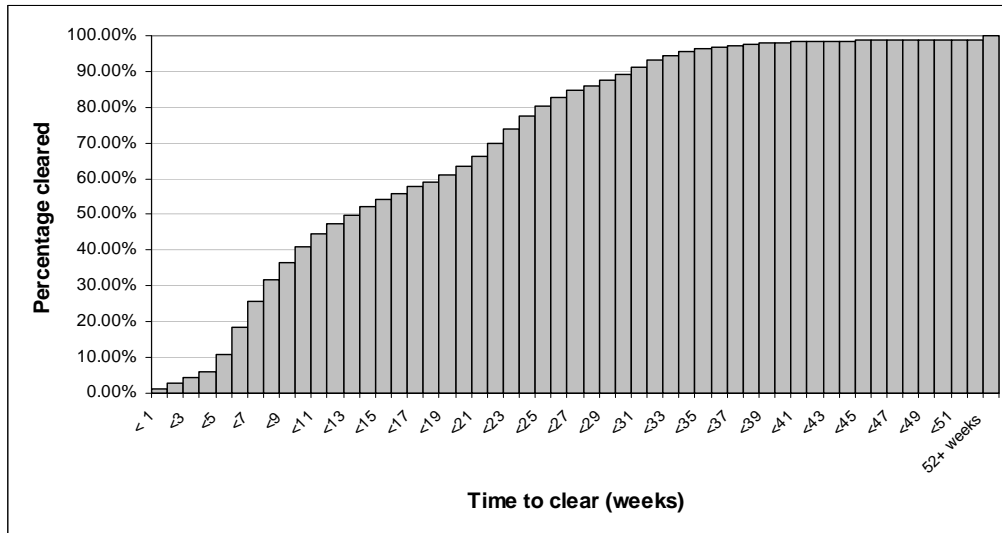
- The clearance times (expressed in weeks or years) are highly dependent upon the processes that take place within a Tribunal and the type and complexity of a case. In some cases, a judgement is awaited from another body (for example European Courts), stayed or be legally complex.
- The measures can not be directly compared between one Tribunal and another because of the different processes. Thus, it is better to compare a specific Tribunal over time.

31. The tables and charts shows the age at which cases were cleared. There are differences by case or tribunal type, thus, clearances have been presented for a number of tribunals by case type. The following new measures examine the age of a case when it is cleared or disposed of and gives the point at which 25%, 50% (the median) and 75% were cleared. For example, in SSCS, 75% of cases that were cleared in the period 1 April to 30 September 2011 were aged 34 weeks or less.

Immigration and Asylum

32. For those cases disposed of in April to September 2011, the cumulative percentages of cases are shown by the age of the case. The time is recorded from receipt to the time that a decision was notified to the appellant.

Figure 6: Cumulative Percentage of Clearance Times from April to September 2011, by age of case, Immigration and Asylum



Source: Tribunals quarterly returns

33. Of those cases disposed of in Immigration and Asylum between April and September 2011:

- 25% were aged 7 weeks or less (i.e. 25% were cleared in 7 weeks or less).
- 50% (the median) were aged 14 weeks or less.
- 75% were aged 24 weeks or less.

34. There are some differences in length of clearance time when cases are examined by the type of case, with Asylum and Managed Migration taking less time to clear than the other types of case. This reflects the different process times which apply to each of the Immigration and Asylum jurisdictions

Table 1: Cumulative percentage of Immigration and Asylum clearances that took place in April to September 2011, by age of case at clearance

Tribunal	25% point	50% point	75% point
Immigration and Asylum (all)	7 weeks or less	14 weeks or less	24 weeks or less
Asylum	5 weeks or less	6 weeks or less	9 weeks or less
Managed Migration	6 weeks or less	8 weeks or less	10 weeks or less

Entry Clearance Officer	19 weeks or less	25 weeks or less	31 weeks or less
Family Visit Visa	11 weeks or less	20 weeks or less	24 weeks or less

Employment Tribunals

35. For Employment Tribunals, the timescale recorded is from receipt to when details of the final judgement is given. The distribution for all ET cases is heavily influenced by the age of multiple cases (which can be stayed or wait decisions from other bodies).

Table 2: Cumulative percentage of Employment Tribunals clearances that took place in April to September 2011, by age of case at clearance

Tribunal	25% point	50% point	75% point
Employment Tribunals (all)	16 weeks or less	35 weeks or less	1-2 years
Single	11 weeks or less	19 weeks or less	34 weeks or less
Multiple	40 weeks or less	1-2 years	3-4 years

36. Clearances for Employment Tribunals were also examined by broad jurisdictional group. The results showed that groupings such as Working Time Directive; National Minimum Wage/Breach of contract; Unfair Dismissal/Breach of Contract had shorter waiting times than other categories.

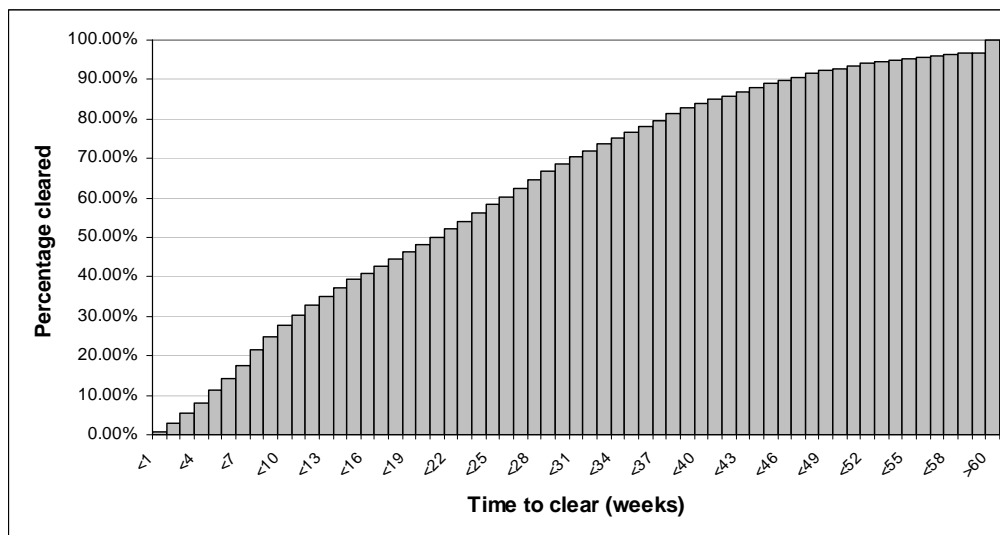
Table 3: Cumulative percentage of ET clearances (for jurisdictional groups) that took place in April to September 2011, by age of case at clearance

ET Jurisdictional Group	25% point	50% point	75% point
Equal Pay	52 weeks or less	2-3 years	3-4 years
Disability Discrimination	17 weeks or less	29 weeks or less	48 weeks or less
Race or Sexual Discrimination	31 weeks or less	52 weeks or less	3-4 years
Religious Belief, Sexual Preference	16 weeks or less	29 weeks or less	51 weeks or less
Age Discrimination	20 weeks or less	49 weeks or less	52 weeks or less
Working Time Directive	10 weeks or less	19 weeks or less	37 weeks or less
Unfair dismissal, redundancy, insolvency	13 weeks or less	22 weeks or less	43 weeks or less
National Minimum Wage	11 weeks or less	20 weeks or less	38 weeks or less
Unauthorised Deductions (Wages Act)	12 weeks or less	27 weeks or less	52 weeks or less
Other	17 weeks or less	31 weeks or less	52 weeks or less

Social Security and Child Support

37. For those cases disposed of in April to September 2011, the cumulative percentages of cases are shown by the age of the case. For SSCS the time is recorded from receipt to the time that a decision was notified to the appellant.

Figure 7: Cumulative Percentage of Clearance Times from April to September 2011, by age of case, SSCS



Source: Tribunals quarterly returns

Of those cases disposed of by SSCS between April and September 2011:

- 25% were aged 10 weeks or less (i.e. 25% were cleared in 10 weeks or less).
- 50% (the median) were aged 21 weeks or less.
- 75% were aged 34 weeks or less.

38. SSCS hears appeals against decisions made by DWP on a number of different benefits. The composition of the Tribunal panel varies for each benefit and there are some differences in length of clearance time for each type of appeal. Those appeals which can be heard by a Judge sitting alone, such as appeals against decisions on Job Seekers' Allowance, Housing Benefit or Council Tax Relief take less time to clear than appeals where a panel including specialist Medical, Financial or Disability panel members is required. There are some differences in length of clearance time when cases are examined by Tribunal type with those Tribunals requiring a Judge sitting alone taking less time to clear than the other Tribunal types.

Table 4: Cumulative percentage of SSCS clearances that took place in April to September 2011, by age of case at clearance

Tribunal Type	25% point	50% point	75% point
SSCS (all)	10 weeks or less	21 weeks or less	34 weeks or less
Judge (Job Seekers' Allowance, Housing Benefit, Council Tax Relief, Child Support, ESA/IB cases with no medical element)	6 weeks or less	12 weeks or less	25 weeks or less
Judge, Medical Member and/or Specialist Disability Member (Disability Living Allowance/ Attendance Allowance)	12 weeks or less	28 weeks or less	39 weeks or less
Judge and Medical Member (ESA/IB)	12 weeks or less	24 weeks or less	34 weeks or less
Judge and Senior Medical Member (Industrial Injury/Disablement Benefit, Vaccine Damage)	14 weeks or less	28 weeks or less	42 weeks or less

Mental Health

39. For the Mental Health jurisdiction the time from receipt to disposal has been examined for the three main case types. Unfortunately, the reporting system is not able to produce analysis by single week of age, thus there is some inaccuracy regarding the median and lower and upper quartiles.

40. Given the statutory requirement for Section 2 cases to be listed within 7 days of receipt, it is not surprising that this type of case has the shortest clearance times.

Table 5: Cumulative percentage of Mental Health clearances that took place in April to September 2011, by age of case at clearance

Table 1

Tribunal	25% point	50% point	75% point
Mental Health - Section 2	Less than a week	Less than a week	Between 1 and 2 weeks
Mental Health – Restricted Patients	More than 9 but less than 15 weeks	More than 9 but less than 15 weeks	Between 15 and 16 weeks
Mental Health – Non Restricted Patients	Between 3 and 7 weeks	Between 8 and 9 weeks	Between 9 and 12 weeks

Special Educational Needs and Disability (SEND) (Tables 2.1 to 4.6)

41. There are a number of tables in this report providing details of the workloads, types of appeal in more detail, outcomes and representation. Information is presented for the period 1 September to 31 August 2011, which is the four-quarter period most closely corresponding with the academic year. This type of information was previously presented in SEND’s Annual Reports.

Special Educational Needs

42. In the academic year 2010-11, there were 3,600 Special Educational Needs (SEN) appeals registered – a 9% increase on the number registered in the previous year. Examined by the nature of the special educational need, 31% were related to Autistic Spectrum Disorder, 17% to Behaviour, Social and Emotional Difficulty and 14% to Specific Learning Difficulty.

43. There were 3,900 disposals in 2010-11, a 32% increase on those in the previous year. Of these, 51% were withdrawn, 29% were conceded by the local authority and 20% had a decision made of hearing.

Disability Discrimination

44. There were 110 registered appeals alleging disability discrimination in the 2010-11 academic year – an increase of 40 on the previous year. There were 80 disposals with 30 being upheld (at Tribunal) and the remainder being dismissed.

Table conventions

Rounding

Figures in the tables are rounded independently and thus may not add to figures because of rounding. The following conventions have been used throughout:

- Values less than 100 remain as unit values.
- Values from 100 to 999 are rounded to the nearest 10.
- Values of 1,000 and over are rounded to the nearest hundred.

Notation

The following symbols have been used throughout the tables in this bulletin:

.	= Not applicable
..	= Not available
-	= Small Value
~	= No cases dealt with so rate could not be calculated
0	= Nil
(r)	= Revised data
(p)	= Provisional data

Annex 1 – HM Courts and Tribunals Service

Her Majesty's Courts and Tribunals Service (HMCTS) was created on 1 April 2011. It is an agency of the MoJ and is responsible for the administration of the criminal, civil and family courts and tribunals in England and Wales and non-devolved tribunals in Scotland and Northern Ireland.

This executive summary page provides high-level findings for the courts and tribunals which are administered by HMCTS during the quarter July to September.

- There were **416,500 civil (non family) claims issued in the county courts** during the July to September quarter of 2011, one per cent fewer than in the corresponding quarter of 2010 and continuing the general decline since the January to March quarter of 2008.
- In the family courts, there were **7,700 children involved in public law applications** made in the July to September quarter of 2011, a 28 per cent increase on the same period for 2010. There were **30,200 children involved in private law applications**, a five per cent decrease. The trend in the number of children involved in private law applications has been downward since late 2009.
- There were **439,700 criminal proceedings completed in magistrates' courts** during July to September of 2011, around six per cent fewer than in the same period of 2010. The trend in recent years has been a decreasing volume of completed criminal proceedings.
- A total of **38,600 cases were received in the Crown Court** in the quarter July to September of 2011, a marginal fall on the number received in the same quarter of 2010.
- For defendants whose cases finally completed in either a magistrates' court or Crown Court during the July to September quarter of 2011, the average time taken between the dates an offence was committed and the completion for all criminal cases was 153 days. This is a two per cent increase compared to the same period in 2010.
- During July to September 2011, there were **180,400 cases received by all tribunals**, a nineteen per cent decrease over the same quarter of the previous year. This included 90,700 cases to the Social Security and Child Support Tribunal, 40,300 cases to the Employment Tribunals and 32,200 cases in Immigration and Asylum.
- There were **187,800 cases disposed of by all tribunals** during the quarter July to September 2011, an increase of three per cent (excluding RPT) on July to September 2010. The caseload outstanding at 30 September 2011 was 742,000. More than three fifths of the caseload outstanding was for multiple Employment Tribunals claims.

Explanatory Notes

ET Information in Nottingham and Leicester

Historically, Employment Tribunals statistics have been extracted from the ETHOS case management system. However, a pilot replacement system was developed (Caseflow). The pilot of the Caseflow system commenced in Nottingham in November 2009, and whilst steps were taken to protect the data through to the end of the 2009-10 reporting year (i.e. to 31 March 2010), the resource required to maintain duplicated entry onto the old ETHOS system was simply not sustainable. There was every expectation that the new system would be in a position to provide the data very early in the new reporting year. The pilot of Caseflow was extended to Leicester with effect from 24 May 2010. Data for Leicester was available from ETHOS up until that point.

The Caseflow system has now ceased and a reversion has taken place to the former ETHOS system. In some cases complete data has not been available for Nottingham and Leicester. Whilst there is robust data on receipts of claims, disposals and caseload outstanding, with regard to Nottingham and Leicester, jurisdictional claims and performance data is incomplete. Thus we have removed data for these two areas when making comparisons with previous years.

Data quality and sources

Information presented in this report is management information drawn from a number of administrative sources. Although care is taken when processing and analysing the data, the details are subject to inaccuracies inherent in any large-scale recording system and it is the best data that is available at the time of publication. HMCTS is examining the quality of management information. Thus, it is possible that some revisions may be issued.

Revisions

Some statistics were correct at the time of publication but have been revised following data quality checks or reconciliation. These values have been marked as 'r'.

Change of Names of Tribunals

A number of Tribunals became part of the former Tribunals Service since it was formed, or have changed their name. Details of these changes have been published in Annex A of The Tribunals Service Annual Report and Accounts, 2009-10.

Definitions

Receipt – Volumetric term covering the acceptance of a case by a HMCTS Tribunal.

Disposal – A disposal is the closure of a case when work has ceased to be done. This can be through a claim being withdrawn, settled, dismissed or being decided at a hearing.

Hearing clearance (SSCS) – these are cleared via a Tribunal (could be a panel or member of the Judiciary sitting alone) with a decision/outcome.

Non-hearing clearance (SSCS) – these are cases withdrawn prior to a hearing, struck out or superseded. There is no Tribunal judgement.

Caseload outstanding – The number of cases outstanding at the end of the period and still waiting to be dealt with to completion.

ET Claim – A claim may be brought under more than one jurisdiction or subsequently amended or clarified in the course of proceedings, but will be counted only once.

ET single and multiple claims – Claims to the Employment Tribunal may be classified into two broad categories – singles and multiples. Multiple cases are where two or more people bring cases, involving one or more jurisdiction(s) usually against a single employer but not necessarily so, for instance in Transfer of Undertakings (Protection of Employment) Regulations (TUPE) cases, and always arising out of the same or very similar circumstances. As a multiple, the cases are processed together.

ET Jurisdiction – The Employment Tribunal powers to hear a claim are determined by legislation, with statutory provisions defining the ambit of the jurisdiction that can be covered by a claim to an Employment Tribunal.

ET Jurisdictional mix – A claim may contain a number of grounds, known as jurisdictional cases. In any hearing, the tribunal has to decide upon the merits of the claim made under each jurisdiction e.g. unfair dismissal and sex discrimination. The total number of jurisdictions covered by each case gives a truer measure of workload than the number of claims. The jurisdictions covered by ET are wide ranging, from discrimination and unfair dismissals to issues around salary and working conditions.

IA Case types:

Asylum – appeals against a refusal to grant asylum, including asylum claims which raise Human Rights grounds.

Managed Migration – appeals generated by people already in the UK who have been refused permission to extend their stay here (either permanently or

temporarily). This appeal type will also cover occasions where an individual has their permission to be in the UK revoked.

Family Visit Visa (FVV) – appeals against decisions not to allow temporary visits to see family in the UK.

Entry Clearance Officer (ECO) – appeals generated by people who are not already in the UK, but have been refused permission to enter or stay in the UK for a fixed period of time, or live here permanently.

Deport Appeals – appeals against deportation orders made against people by the Home Secretary, introduced by section 32 of the UK Borders Act 2007. Other appeals with a deport element are included in the Asylum and Managed Migration case categories.

Human Rights Appeals – This appeal category is now defunct and appeals raising Human Rights grounds are recorded more accurately under different categories.

Hearing – The hearing is a meeting at which the tribunal panel considers evidence (either orally or paper based) and reaches a decision (where the decision may be to adjourn or to agree a final outcome). If the hearing is adjourned and restarted, it counts as one hearing.

Examples of hearings include:

- Paper hearings;
- Oral hearings;
- Case Management Discussions;
- Decision on Eligibility.

Oral Hearing – A hearing where the party (ies) and/or their representative(s) attend (this can be by telephone or by video conference).

Paper Hearing – Consideration of the case using documents, and not requiring any physical appearance by the parties.

Decision in favour (SSCS) – Decision in favour of the appellant.

Decision upheld (SSCS) – Decision made by the First Tier Agency and withheld by the Tribunal.

Withdrawal – The applicant/claimant/appellant ceases action either before or at the hearing.

Conceded (SEND) – The local authority defending the appeal agree to provide what is requested without the need for an oral hearing. This is only permitted on some appeal types. On others the parents have to formally withdraw their appeal.

Settlement – Cases settled without the need for a hearing. A third party may have been involved in the process.

Postponement – Where a case is taken out of the list, **prior to** the commencement of the hearing – can be done by the applicant, or any other party.

Adjournment – Where, on the day of the hearing, the Panel decides that, for whatever reason, the appeal/case cannot be finalised and has to put off making a final decision to another date, for example because further evidence is required.

Outcome of hearing – The outcome of the hearing is the final determination of the proceedings or of a particular issue in those proceedings; it may include an award of compensation, a declaration or recommendation and it may also include orders for costs, preparation time or wasted costs either in favour or against an appellant. **Note:** ET records outcomes for each act (or jurisdiction), not for the hearing.

Caseload outstanding – The number of cases outstanding at the end of the period and still waiting to be dealt with to completion.

Contact points for further information

Spreadsheet files of the tables and graphs contained in this document are also available for download from this address.

Press enquiries should be directed to the Ministry of Justice press office:

Email: press.office@justice.gsi.gov.uk

Other enquiries about these statistics should be directed to:

HMCTS

Performance, Analysis and Reporting Team

4th Floor

Taylor House

88 Rosebery Avenue

London EC1R 4QU

Email: tsstats@hmcts.gsi.gov.uk

General enquiries about the statistical work of the Ministry of Justice can be e-mailed to: statistics.enquiries@justice.gsi.gov.uk

General information about the official statistics system of the UK is available from www.statistics.gov.uk

© Crown copyright
Produced by the Ministry of Justice

Alternative format versions of this report are available on request from the Her Majesty's Courts and Tribunals Service by emailing tsstats@hmcts.gsi.gov.uk.

Table 1.1 Tribunals Receipts by Quarter and Jurisdiction

	2009-10		2010-11				2011-12 ^P		Number
	Q2	Q1	Q2	Q3	Q4	Annual Total	Q1 ^P	Q2 ^P	
Tribunals Overall	198,500	190,300	220,900	188,800	231,000	831,000	179,300	180,400	
First Tier Tribunal (Immigration and Asylum Chamber)¹	41,600	34,100	36,300	33,100	33,400	136,800	26,700	32,200	
Employment Appeal	510	520	540	490	500	2,000	540	560	
Employment	62,100	44,400	57,600	39,900	76,200	218,100	47,800	40,300	
Singles	19,400	15,100	15,400	15,100	15,100	60,600	14,800	15,200	
Multiples	42,700	29,400	42,200	24,800	61,200	157,500	32,900	25,000	
Social Security and Child Support	79,800	96,500	112,600	102,500	106,900	418,500	90,000	90,700	
Mental Health	6,400	6,500	6,400	6,200	6,800	25,900	6,900	7,200	
Adjudicator to HM Land Registry	380	360	310	250	340	1,300	360	290	
Asylum Support	570	1,400	1,100	880	690	4,100	480 ^r	430	
Care Standards	71	46	38	27	22	130	18	15	
Charities	0	-	6	-	-	12	-	0	
Claims Management Services	-	0	0	-	-	5	-	-	
Consumer Credit Appeals	-	-	-	-	-	8	-	-	
Criminal Injuries Compensation	910	880	710	550	570	2,700	570	590	
Environmental Jurisdiction	-	0	0	0	0	0	0	0	
Estate Agents Appeals	-	0	0	0	0	0	0	-	
Financial Services and Markets & Pensions Regulator	11	5	17	440	240	710	490	18	
First Tier Tribunal (Immigration Services)	-	-	5	-	-	10	-	-	
Gambling Appeals	0	-	0	0	0	-	-	0	
Gender Recognition Panel	70	83	86	72	62	300	84	82	
Information Rights	33	49	44	42	85	220	49	84	
Lands	210	230	220	150	150	750	120	120	
Local Government Standards in England	21	15	15	9	10	49	8	8	
Pensions Regulator²	-	-	-	-	0	8	-	-	
Primary Health Lists	32	23	24	40	38	130	20	30	
Reserve Forces Appeals	-	-	0	-	-	9	-	-	
Residential Property Tribunal	-	-	-	-	-	-	-	2,300	
Special Educational Needs and Disability	740	980	850	640	910	3,400	1,100	830	
Tax first tier	3,000	2,300	2,300	1,900	2,500	8,900	2,300	2,900	
Transport	160	140	130	140	120	520	100	120	
Upper Tribunal (Administrative Appeals Chamber)	1,100	1,100	1,100	1,000	1,000	4,100	1,100	1,300	
War Pensions and Armed Forces Compensation	790	670	550	500	500	2,200	450	450	

Source: Tribunals Quarterly and Annual Reconciled Returns

Figures may not add to totals because of rounding. Quarterly data is reconciled at the end of the year.

. Not applicable

.. Not available

- Small Value

0 Nil

(r) Revised data

(p) Provisional data

¹ The Tribunals Service Immigration and Asylum (IA), consisting of 'First Tier Tribunal Immigration and Asylum Chamber' and 'Upper Tribunal Immigration and Asylum Chamber' (FTTIAC and UTIAC), replaced the Asylum and Immigration Tribunal (AIT) on 15 February 2010. Figures for 2010-11 relate to appeals dealt with by Immigration Judges at the FTIAC. Figures for 2009-10 relate to appeals dealt with by Immigration Judges at the AIT or FTIAC.

² Pensions Regulator is combined with Financial Services & Markets from Q1 2011-12. Part of Upper Tribunal (Tax and Chancery Chamber).

Table 1.1a Employment Tribunal Receipts by Quarter and Jurisdiction 2010-11

	2009-10		2010-11				2011-12 ^P		Number
	Q2	Q1	Q2	Q3	Q4	Annual Total	Q1 ^P	Q2 ^P	
Total Claims Accepted¹	62,100	44,400	57,600	39,900	76,200	218,100	47,800	40,300	
Jurisdiction									
Unfair dismissal	15,100	12,800	12,100	11,600	11,400	47,900	11,100	11,800	
Unauthorised deductions (formerly Wages Act)	16,800	12,800	22,500	15,200	20,900	71,300	9,600	13,800	
Breach of contract	10,500	9,900	9,200	7,700	7,800	34,600	7,600	8,700	
Sex discrimination	6,000	2,700	8,100	5,300	2,100	18,300	2,300	2,300	
Working Time Directive	32,300	18,700	27,000	13,500	54,900	114,100	26,600	11,600	
Redundancy pay	4,300	5,100	4,100	3,300	3,500	16,000	3,500	4,100	
Disability discrimination	2,100	1,700	1,800	1,900	1,800	7,200	1,900	2,000	
Redundancy – failure to inform and consult	1,800	1,900	2,800	1,300	1,400	7,400	2,100	2,000	
Equal pay	7,500	7,100	11,100	11,100	5,300	34,600	5,800	12,000	
Race discrimination	1,600	1,300	1,300	1,300	1,100	5,000	1,200	1,200	
Written statement of terms and conditions	1,300	1,100	930	1,000	1,000	4,000	920	910	
Written statement of reasons for dismissal	330	250	270	200	210	930	230	240	
Written pay statement	370	300	360	310	370	1,300	320	310	
Transfer of an undertaking - failure to inform and consult	510	410	800	390	280	1,900	780	890	
Suffer a detriment / unfair dismissal - pregnancy	570	430	400	680	370	1,900	430	590	
Part Time Workers Regulations ²	130	130	1,200	130	88	1,600	150	120	
National minimum wage	120	120	130	150	130	520	130	140	
Discrimination on grounds of Religion or Belief	280	210	220	240	210	880	210	250	
Discrimination on grounds of Sexual Orientation	200	140	190	170	150	640	150	170	
Age Discrimination	1,800	1,400	1,800	2,900	770	6,800	890	1,000	
Others	1,400	1,400	1,500	1,300	1,200	5,500	1,400	1,400	
Total	105,100	79,700	107,900	79,700	115,000	382,400	77,600	75,500	

Source: ET Quarterly and Annual Reconciled Returns

Figures may not add to totals because of rounding. Quarterly data is reconciled at the end of the year.

. Not applicable

.. Not available

- Small Value

0 Nil

(r) Revised data

(p) Provisional data

[1] A claim may be brought under more than one jurisdiction or subsequently amended or clarified in the course of proceedings but will be counted only once.

[2] The high number of receipts for Part Time Workers Regulations in Q2 2010/11 is due to a large multiple receipt in July 2010.

Table 1.1b Immigration and Asylum Receipts by Quarter and Case type

	2009-10		2010-11				2011-12 ^P		Number
	Q2	Q1	Q2	Q3	Q4	Annual Total	Q1 ^P	Q2 ^P	
First Tier Tribunal (Immigration and Asylum Chamber) ¹	41,600	34,100	36,300	33,100	33,400	136,800	26,700	32,200	
Asylum	5,000	4,200	3,900	3,900	3,900	15,800	3,500	3,100	
Managed Migration	8,600	9,700	8,000	9,400	10,400	37,600	6,900	7,700	
Entry Clearance	6,700	7,400	7,300	9,300	9,200	33,200	5,200	7,100	
Family Visit Visa	21,100	12,600	16,800	10,200	9,700	49,400	11,000	14,100	
Deport and others	200	190	210	280	260	940	180	200	

Source: Immigration and Asylum Quarterly and Annual Reconciled Returns

Figures may not add to totals because of rounding. Quarterly data is reconciled at the end of the year.

. Not applicable

.. Not available

- Small Value

0 Nil

(r) Revised data

(p) Provisional data

¹ The Tribunals Service Immigration and Asylum (IA), consisting of 'First Tier Tribunal Immigration and Asylum Chamber' and 'Upper Tribunal Immigration and Asylum Chamber' (FTTIAC and UTIAC), replaced the Asylum and Immigration Tribunal (AIT) on 15 February 2010. Figures for 2010-11 relate to appeals dealt with by Immigration Judges at the FTTIAC. Figures for 2009-10 relate to appeals dealt with by Immigration Judges at the AIT or FTTIAC.

Table 1.1c Social Security and Child Support Receipts by Quarter and Benefit Type

Benefit	Number							
	2009-10	2010-11					2011-12 ^P	
	Q2	Q1	Q2	Q3	Q4	Annual Total	Q1 ^P	Q2 ^P
Attendance Allowance	1,000	870	1,100	1,100	1,100	4,200	950	1,100
Disability Living Allowance	16,900	17,300	21,000	21,400	19,900	79,400	17,800	20,800
Bereavement Benefit	140	120	110	140	120	500	140	89
Carer's Allowance	380	310	440	420	460	1,600	510	540
Child Benefit Lone Parent	490	340	640	480	500	1,900	330	320
Child Support Allowance	1,000	940	930	920	940	3,700	820	960
Tax Credits	340	710	720	670	930	3,000	880	1,200
Credits (Other)	0	0	-	-	-	5	-	0
COEG	-	-	-	-	0	-	0	-
Compensation Recovery Unit	73	75	87	100	100	370	96	110
Housing/Council Tax	3,200	3,100	3,300	3,000	3,000	12,300	2,700	3,000
Disability Working Allowance	0	0	0	-	0	-	0	-
Employment Support Allowance	29,000	46,000	55,700	44,800	50,800	197,400	42,900	43,500
Health in Pregnancy Grant	120	120	93	50	130	390	80	15
Home Responsibilities Protection	-	7	6	-	9	25	-	-
Incapacity Benefit	12,600	9,400	9,100	8,000	7,700	34,300	3,600	660
Income Support	4,100	3,900	4,000	4,000	3,100	15,100	2,600	2,800
Industrial Death Benefit	0	-	0	0	0	-	-	0
Industrial Injuries Disablement Benefit	1,100	2,600	2,200	2,300	2,100	9,200	1,400	1,300
Job Seekers Allowance	7,300	8,800	11,500	12,900	13,800	47,000	12,700	11,700
Lookalikes	-	-	-	-	-	8	-	0
Maternity Benefit/Allowances	64	57	71	57	48	230	51	38
Others (Extinct/rare Benefits)	19	37	58	33	16	140	18	19
Penalty Proceedings	0	-	0	0	-	-	0	0
Pensions credit	370	330	360	390	530	1,600	570	450
Retirement Pension	160	220	190	270	280	960	190	210
Severe Disablement Benefit/Allowance	32	26	23	42	39	130	28	15
Social Fund	1,200	1,300	1,000	1,200	1,400	4,800	1,600	1,900
Vaccine Damage Appeals	-	-	-	-	-	7	-	-
Total	79,800	96,500	112,600	102,500	106,900	418,500	90,000	90,700

Source: SSSC Quarterly and Annual Reconciled Returns

Figures may not add to totals because of rounding. Quarterly data is reconciled at the end of the year.

.. Not available

- Small Value

0 Nil

(r) Revised data

(p) Provisional data

Table 1.2 Tribunals Disposals by Quarter and Jurisdiction

	2009-10		2010-11 ³				2011-12 ^P		Number
	Q2	Q1	Q2	Q3	Q4	Annual Total	Q1 ^P	Q2 ^P	
Tribunals Overall	159,500	163,600	180,300	172,300	198,300	714,500	180,200	187,800	
First Tier Tribunal (Immigration and Asylum Chamber) ¹	52,800	37,100	40,900	37,800	38,800	154,700	33,600	32,700	
Employment Appeal ²	130	470	470	600	450	2,000	570	490	
Employment ³	28,400	30,700	31,700	25,700	34,800	122,800	25,800	26,700	
Singles	16,000	16,400	15,600	14,600	16,300	62,900	13,800	15,000	
Multiples	12,400	14,300	16,000	11,000	18,500	59,900	11,900	11,700	
Social Security and Child Support	65,600	81,800	93,000	95,300	110,100	380,200	107,200	111,500	
Mental Health	6,300	6,200	6,900	6,500	7,000	26,600	7,100	7,400	
Adjudicator to HM Land Registry	620	460	350	410	410	1,600	350	400	
Asylum Support	620	1,400	1,200	870	720	4,200	510	480	
Care Standards	50	37	46	32	27	140	33	19	
Charities	0	-	-	-	-	8	-	-	
Claims Management Services	-	-	0	-	0	-	5	-	
Consumer Credit Appeals	-	-	0	-	-	9	-	6	
Criminal Injuries Compensation	920	840	960	810	960	3,600	680	860	
Environmental Jurisdiction	.	0	0	0	0	0	0	0	
Estate Agents Appeals	0	-	-	0	0	-	0	0	
Financial Services and Markets & Pensions Regulator ⁴	-	13	6	-	0	23	5	9	
First Tier Tribunal (Immigration Services)	-	-	-	-	-	7	-	-	
Gambling Appeals	0	0	0	-	-	-	-	0	
Gender Recognition Panel	72	61	80	85	90	320	58	99	
Information Rights	20	41	61	41	52	200	52	50	
Lands	380	310	400	430	610	1,800	160	160	
Local Government Standards in England	19	14	16	18	9	57	6	6	
Pensions Regulator ⁴	0	-	0	0	0	-	.	.	
Primary Health Lists	23	28	24	28	29	110	33	35	
Reserve Forces Appeals	7	-	-	-	-	11	-	-	
Residential Property Tribunal	-	.	2,300	
Special Educational Needs and Disability	710	700	760	690	800	2,900	1,000	820	
Tax first tier	1,100	1,500	1,600	1,500	1,600	6,100	1,300	1,900	
Transport	160	150	130	140	120	540	130	110	
Upper Tribunal (Administrative Appeals Chamber)	960	1,200	1,160	850	1,100	4,400	1,100	1,100	
War Pensions and Armed Forces Compensation	570	580	580	480	550	2,200	600	560	

Source: Tribunals Quarterly and Annual Reconciled Returns

Figures may not add to totals because of rounding. Quarterly data is reconciled at the end of the year.

. Not applicable
 .. Not available
 - Small Value

0 Nil
 (r) Revised data
 (p) Provisional data

¹ The Tribunals Service Immigration and Asylum (IA), consisting of 'First Tier Tribunal Immigration and Asylum Chamber' and 'Upper Tribunal Immigration and Asylum Chamber' (FTIAC and UTIAC), replaced the Asylum and Immigration Tribunal (AIT) on 15 February 2010. Figures for 2010-11 relate to appeals dealt with by Immigration Judges at the FTIAC. Figures for 2009-10 relate to appeals dealt with by Immigration Judges at the AIT or FTIAC.

² Prior to 2010-11 EAT disposals exclude appeals rejected, struck out or withdrawn prior to registration.

From Q1 2010-11 onwards, disposals include appeals rejected, struck out or withdrawn prior to registration

³ Employment Tribunal disposals for 2010-11 may include a small undercount due to a change of computer system during the year

⁴ Pensions Regulator is combined with Financial Services & Markets from Q1 2011-12. Part of Upper Tribunal (Tax and Chancery Chamber).

Table 1.2a Employment Tribunal Disposals by Quarter and Jurisdiction

	JURISDICTIONS DISPOSED							Number
	2010-11 ¹					2011-12 ^P		
	Q1	Q2	Q3	Q4	Annual Total	Q1 ^P	Q2 ^P	
Unfair dismissal	12,900	11,800	10,600	14,300	49,600	11,100	11,700	
Unauthorised deductions (Formerly Wages Act)	9,200	9,300	8,700	11,000	38,200	8,000	9,700	
Breach of contract	8,700	7,600	7,000	8,400	31,800	7,100	7,700	
Redundancy pay	4,400	3,100	2,900	3,700	14,100	3,000	3,200	
Sex discrimination	3,700	3,000	3,700	5,100	15,600	3,800	4,300	
Race discrimination	1,200	1,200	1,200	1,300	4,900	1,100	1,200	
Disability discrimination	1,700	1,600	1,600	1,900	6,800	1,700	1,800	
Religious belief discrimination	220	200	190	240	850	200	240	
Sexual orientation discrimination	150	170	160	180	660	140	150	
Age discrimination	910	740	710	1,300	3,700	1,200	1,100	
Working time	6,700	5,700	5,200	6,500	24,100	5,300	6,000	
Equal pay	7,000	5,000	4,900	8,800	25,600	4,800	5,600	
National minimum wage	130	130	93	250	600	140	110	
Others	6,200	9,700	5,400	6,100	27,400	5,300	5,800	
All	63,100	59,100	52,500	69,300	244,000	53,000	58,700	

	WITHDRAWN											Number/Percentage			
	2010-11 ¹							2011-12 ^P							
	Q1	Q2	Q3	Q4	Annual Total	Q1 ^P	Q2 ^P	Q1	Q2	Q3	Q4	Annual Total	Q1 ^P	Q2 ^P	
Unfair dismissal	3,300	2,900	2,400	3,700	12,300	2,900	2,800	25	25	22	26	25	26	23	
Unauthorised deductions (Formerly Wages Act)	2,700	2,900	3,100	4,000	12,600	2,300	2,400	29	31	36	36	33	29	25	
Breach of contract	2,100	1,600	1,500	2,100	7,300	1,700	1,600	24	21	21	24	23	24	21	
Redundancy pay	1,300	700	610	1,100	3,700	750	560	30	23	21	29	27	25	17	
Sex discrimination	1,200	1,200	2,200	2,900	7,600	1,100	1,100	33	41	59	57	49	29	25	
Race discrimination	340	340	330	350	1,400	330	390	27	29	28	27	28	30	32	
Disability discrimination	520	490	510	560	2,100	520	540	31	31	31	29	31	31	30	
Religious belief discrimination	68	66	52	62	250	61	65	31	33	27	26	29	31	28	
Sexual orientation discrimination	46	53	47	59	210	38	44	30	32	30	32	31	27	30	
Age discrimination	290	250	220	700	1,500	770	350	32	34	31	54	40	64	31	
Working time	1,900	1,500	1,100	1,800	6,300	1,300	1,300	28	26	21	28	26	25	22	
Equal pay	3,700	2,900	3,500	5,100	15,300	2,000	3,000	53	58	72	59	60	41	53	
National minimum wage	20	34	20	43	120	28	29	15	27	22	17	20	20	26	
Others	2,000	1,700	1,800	2,100	7,700	1,400	1,500	32	18	34	35	28	26	26	
All	19,500	16,700	17,400	24,600	78,300	15,200	15,700	31	28	33	36	32	29	27	

	ACAS CONCILIATED											Numbers/Percentage			
	2010-11 ¹							2011-12 ^P							
	Q1	Q2	Q3	Q4	Annual Total	Q1 ^P	Q2 ^P	Q1	Q2	Q3	Q4	Annual Total	Q1 ^P	Q2 ^P	
Unfair dismissal	5,500	4,900	4,800	5,400	20,500	4,400	5,000	42	42	45	38	41	40	42	
Unauthorised deductions (Formerly Wages Act)	2,800	3,000	2,200	2,500	10,400	2,100	2,400	30	32	25	23	27	26	25	
Breach of contract	2,600	2,400	2,500	2,700	10,300	2,200	2,500	30	32	35	32	32	31	32	
Redundancy pay	680	600	660	620	2,600	540	620	16	19	23	17	18	18	19	
Sex discrimination	1,500	1,100	660	1,100	4,300	1,400	1,000	40	37	18	21	28	36	24	
Race discrimination	470	410	410	460	1,700	420	430	38	34	35	36	36	37	36	
Disability discrimination	770	700	730	920	3,100	750	800	46	45	45	48	46	45	45	
Religious belief discrimination	82	61	60	86	290	71	87	38	30	31	36	34	36	37	
Sexual orientation discrimination	67	71	56	72	270	56	56	44	43	36	39	41	40	38	
Age discrimination	350	290	280	380	1,300	270	330	38	40	39	29	35	23	30	
Working time	1,700	1,600	1,700	2,000	7,100	1,700	2,000	26	29	33	30	29	31	33	
Equal Pay	1,300	1,100	180	490	3,000	1,900	850	18	22	4	6	12	40	15	
National minimum wage	59	46	38	54	200	45	38	45	36	41	22	33	33	34	
Others	1,700	1,500	1,500	1,600	6,300	1,500	1,700	27	16	26	23	28	28	29	
All	19,500	17,900	15,700	18,300	71,400	17,300	17,800	31	30	30	26	29	33	30	

	STRUCK OUT (NOT AT A HEARING)											Numbers/Percentage			
	2010-11 ¹							2011-12 ^P							
	Q1	Q2	Q3	Q4	Annual Total	Q1 ^P	Q2 ^P	Q1	Q2	Q3	Q4	Annual Total	Q1 ^P	Q2 ^P	
Unfair dismissal	1,200	900	830	2,400	5,400	1,000	1,100	9	8	8	17	11	9	9	
Unauthorised deductions (Formerly Wages Act)	930	680	920	910	3,400	890	2,300	10	7	11	8	9	11	23	
Breach of contract	520	690	600	890	2,700	610	890	6	9	10	10	8	9	12	
Redundancy pay	240	310	380	470	1,400	330	590	5	10	13	13	10	11	18	
Sex discrimination	640	420	610	810	2,500	1,000	1,900	17	14	16	16	16	27	45	
Race discrimination	110	120	130	150	500	90	96	9	10	11	12	10	8	8	
Disability discrimination	120	120	110	160	510	120	120	7	7	7	8	7	7	7	
Religious belief discrimination	12	23	26	32	93	19	27	6	12	14	14	11	10	11	
Sexual orientation discrimination	14	14	24	15	70	11	16	9	8	10	10	11	8	11	
Age discrimination	110	67	80	98	350	10	45	12	9	11	98	8	45	29	
Working time	330	490	460	590	1,900	500	540	5	9	9	9	8	9	9	
Equal pay	2,000	920	1,200	1,300	5,300	890	1,800	28	19	24	14	21	18	31	
National minimum wage	11	-	8	14	37	6	7	8	-	9	6	6	10	6	
Others	350	390	250	430	1,400	510	610	6	4	5	7	5	10	11	
All	6,500	5,200	5,600	8,300	25,500	6,000	10,300	10	9	11	12	10	11	17	

Figures may not add to totals because of rounding. Quarterly data is reconciled at the end of the year.

¹ Excludes a small proportion of cases due to a change of computer system during the year.

Table 1.2a Employment Tribunal Disposals by Quarter and Jurisdiction

	SUCCESSFUL AT TRIBUNAL										Numbers/Percentage			
	2010-11 ¹					2011-12 ^P								
	Q1	Q2	Q3	Q4	Annual Total	Q1 ^P	Q2 ^P							
Unfair dismissal	1,100	8	1,100	10	970	9	990	7	4,200	8	1,100	10	930	8
Unauthorised deductions (Formerly Wages Act)	1,200	14	1,200	13	1,200	14	1,800	16	5,400	14	1,000	13	1,100	11
Breach of contract	1,800	21	1,200	16	1,200	17	1,200	14	5,400	17	1,100	15	1,100	14
Redundancy pay	1,300	29	710	23	560	20	690	19	3,200	23	640	21	600	18
Sex discrimination	87	2	53	2	68	2	80	2	290	2	68	2	74	2
Race discrimination	35	3	35	3	42	4	36	3	150	3	35	3	35	3
Disability discrimination	39	2	54	3	56	3	42	2	190	3	47	3	47	3
Religious belief discrimination	7	3	8	4	-	-	9	4	27	3	14	7	-	-
Sexual orientation discrimination	7	5	-	-	-	-	9	5	22	3	12	9	-	-
Age discrimination	39	4	18	2	17	2	16	1	90	2	15	1	8	1
Working time	1,600	23	940	16	940	18	960	15	4,400	18	860	16	850	14
Equal pay	21	0	30	1	8	0	220	2	280	1	-	-	5	0
National minimum wage	19	15	24	19	13	14	19	8	75	13	18	13	14	13
Others	1,000	17	1,200	12	1,100	21	1,100	18	4,400	16	1,200	22	970	17
All	8,300	13	6,600	11	6,200	12	7,100	10	28,100	12	6,000	11	5,800	10

	DISMISSED AT A PRELIMINARY HEARING										Numbers/Percentage			
	2010-11 ¹					2011-12 ^P								
	Q1	Q2	Q3	Q4	Annual Total	Q1 ^P	Q2 ^P							
Unfair dismissal	400	3	350	3	290	3	350	2	1,400	3	310	3	380	3
Unauthorised deductions (Formerly Wages Act)	130	1	180	2	150	2	210	2	670	2	140	2	160	2
Breach of contract	200	2	200	3	170	2	210	2	770	2	190	3	200	3
Redundancy pay	48	1	50	2	37	1	67	2	200	1	67	2	100	3
Sex discrimination	59	2	52	2	40	1	47	1	200	1	52	1	39	1
Race discrimination	57	5	77	6	61	5	61	5	260	5	60	5	58	5
Disability discrimination	44	3	48	3	59	4	52	3	200	3	60	4	55	3
Religious belief discrimination	16	7	7	4	17	9	13	6	53	6	11	6	11	5
Sexual orientation discrimination	-	-	6	4	-	-	8	4	22	3	5	4	11	7
Age discrimination	33	4	27	4	31	4	29	2	120	3	26	2	21	2
Working time	150	2	140	2	100	2	140	2	530	2	110	2	130	2
Equal pay	11	0	7	0	6	0	12	0	36	0	27	1	13	0
National minimum wage	0	0	-	-	6	6	-	-	11	2	-	-	-	-
Others	180	3	83	1	140	3	110	2	520	2	120	2	160	3
All	1,300	2	1,200	2	1,100	2	1,300	2	5,000	2	1,200	2	1,300	2

	UNSUCCESSFUL AT HEARING										Numbers/Percentage			
	2010-11 ¹					2011-12 ^P								
	Q1	Q2	Q3	Q4	Annual Total	Q1 ^P	Q2 ^P							
Unfair dismissal	1,300	10	1,200	10	1,200	11	1,100	8	4,800	10	1,100	10	1,200	11
Unauthorised deductions (Formerly Wages Act)	510	6	490	5	520	6	610	6	2,100	6	770	10	450	5
Breach of contract	610	7	560	7	510	7	590	7	2,300	7	560	8	530	7
Redundancy pay	190	4	140	4	170	6	190	5	680	5	170	5	160	5
Sex discrimination	170	5	140	4	120	3	160	3	590	4	170	5	130	3
Race discrimination	210	17	200	16	180	16	210	16	800	16	180	16	200	16
Disability discrimination	160	9	150	10	160	10	180	9	640	9	170	10	190	11
Religious belief discrimination	29	13	35	18	29	15	30	13	120	15	21	11	42	18
Sexual orientation discrimination	12	8	19	12	17	11	14	8	62	9	18	13	16	11
Age discrimination	88	10	79	11	80	11	68	5	320	9	65	5	75	7
Working time	380	6	290	5	360	7	350	5	1,400	6	320	6	370	6
Equal pay	31	0	16	0	16	0	1,700	19	1,700	7	12	0	8	0
National minimum wage	12	9	11	9	-	-	110	43	130	22	22	16	9	8
Others	370	6	4,500	46	320	6	510	8	5,700	21	410	8	460	8
All	4,000	6	7,800	13	3,600	7	5,800	8	21,200	9	4,000	8	3,900	7

	DEFAULT JUDGMENT										Numbers/Percentage			
	2010-11 ¹					2011-12 ^P								
	Q1	Q2	Q3	Q4	Annual Total	Q1 ^P	Q2 ^P							
Unfair dismissal	280	2	340	3	230	2	350	2	1,200	2	320	3	380	3
Unauthorised deductions (Formerly Wages Act)	920	10	970	10	670	8	1000	9	3,600	9	800	10	950	10
Breach of contract	870	10	870	11	610	9	850	10	3,200	10	730	10	840	11
Redundancy pay	630	14	580	19	440	15	590	16	2,200	16	550	18	610	19
Sex discrimination	26	1	16	1	22	1	23	0	87	1	18	0	20	0
Race discrimination	11	1	7	1	11	1	19	1	48	1	9	1	10	1
Disability discrimination	13	1	-	-	10	1	21	1	48	1	8	0	16	1
Religious belief discrimination	-	-	0	0	5	3	-	-	12	1	-	-	-	-
Sexual orientation discrimination	-	-	0	0	-	-	-	-	9	1	0	0	-	-
Age discrimination	-	-	5	1	-	-	11	1	21	1	9	1	12	1
Working time	670	10	730	13	510	10	700	11	2,600	11	550	10	790	13
Equal pay	5	0	-	-	0	0	-	-	7	0	-	-	-	-
National minimum wage	9	7	7	5	6	6	8	3	30	5	7	5	12	11
Others	570	9	280	3	290	5	230	4	1,400	5	270	5	400	7
All	4,000	6	3,800	6	2,800	5	3,800	5	14,400	6	3,300	6	4,000	7

Figures may not add to totals because of rounding. Quarterly data is reconciled at the end of the year.

¹ Excludes a small proportion of cases due to a change of computer system during the year.

Source: Tribunals Quarterly and Annual Reconciled Returns

Table 1.2b Immigration and Asylum Disposals by Quarter and Case Type

	2009-10		2010-11				2011-12 ^P	
	Q2	Q1	Q2	Q3	Q4	Annual Total	Q1 ^P	Q2 ^P
First Tier Tribunal (Immigration and Asylum Chamber)	52,800	37,100	40,900	37,800	38,800	154,700	33,600	32,700
Asylum	4,400	4,700	4,600	3,900	4,000	17,100	3,800	3,600
Managed Migration	7,800	10,400	13,100	10,800	10,900	45,200	9,700	8,000
Entry Clearance	26,700	7,900	8,200	8,400	8,200	32,700	8,800	9,100
Family Visit Visa	13,700	13,900	14,900	14,600	15,300	58,600	11,000	11,800
Deport and others	270	230	280	230	310	1,100	280	190

Source: Immigration and Asylum Quarterly and Annual Reconciled Returns

Figures may not add to totals because of rounding. Quarterly data is reconciled at the end of the year.

. Not applicable

.. Not available

- Small Value

0 Nil

(r) Revised data

(p) Provisional data

Table 1.2c Social Security and Child Support Disposals by Quarter and Benefit Type

Benefit	2009-10		2010-11				2011-12 ^P		Number
	Q2	Q1	Q2	Q3	Q4	Annual Total	Q1 ^P	Q2 ^P	
Attendance Allowance	920	850	860	850	1,000	3,600	1,100	1,200	
Disability Living Allowance	17,000	15,600	16,300	15,100	18,200	65,100	19,700	23,300	
Bereavement Benefit	150	110	100	110	150	480	120	120	
Carer's Allowance	340	220	340	370	400	1,300	430	520	
Child Benefit Lone Parent	450	350	450	480	510	1,800	460	390	
Child Support Allowance	1,200	860	870	860	990	3,600	920	1,100	
Tax Credits	430	510	700	730	860	2,800	840	970	
Credits (Other)		0	0	-	-	-	-	0	
COEG	0	0	0	0	-	-	-	-	
Compensation Recovery Unit	88	71	79	100	88	340	89	130	
Housing/Council Tax benefit	3,300	2,800	3,100	3,100	3,300	12,300	2,900	3,200	
Disability Working Allowance	-	0	0	-	-	-	0	-	
Employment Support Allowance	11,200	35,500	42,700	45,900	52,500	176,600	51,000	51,300	
Health in Pregnancy Grant	50	160	130	83	120	480	100	69	
Home Responsibilities Protection	-	7	11	-	10	30	7	-	
Incapacity Benefit	14,400	10,100	9,500	8,400	9,400	37,400	8,600	6,700	
Income Support	4,700	3,500	3,900	4,100	4,300	15,700	3,400	3,400	
Industrial Death Benefit	0	-	-	0	0	-	0	0	
Industrial Injuries Disablement Benefit	1,700	1,900	2,100	2,000	2,100	8,100	2,100	2,100	
Job Seekers Allowance	7,600	7,700	10,000	11,400	14,000	43,100	13,100	14,200	
Lookalikes	0	-	-	0	-	6	-	0	
Maternity Benefit/Allowances	68	58	69	60	47	230	65	43	
Others (Extinct/rare Benefits)	21	18	15	28	18	79	21	23	
Penalty Proceedings	0	0	0	-	0	-	0	-	
Pensions Credit	420	360	390	430	480	1,700	530	540	
Retirement Pension	220	190	190	210	270	870	230	220	
Severe Disablement Benefit/Allowance	32	27	27	36	28	120	30	44	
Social Fund	1,300	1,000	1,200	1,000	1,300	4,500	1,300	1,900	
Vaccine Damage Appeals	0	0	-	-	-	8	-	0	
Total	65,600	81,800	93,000	95,300	110,100	380,200	107,200	111,500	

Source: SSCS Quarterly and Annual Reconciled Returns

Figures may not add to totals because of rounding. Quarterly data is reconciled at the end of the year.

. Not applicable

.. Not available

- Small Value

0 Nil

(r) Revised data

(p) Provisional data

Table 1.2d Social Security and Child Support Outcomes by Quarter and Benefit Type

Benefit	Number/Percentage																			
	2009-10 Quarter 2				2010-11 Quarter 2				2011-12 Quarter 1 ^P				2011-12 Quarter 2 ^P							
	Cleared at Hearing ¹		Decision In Favour ²		Decision Upheld ³		Cleared at Hearing ¹		Decision In Favour ²		Decision Upheld ³		Cleared at Hearing ¹		Decision In Favour ²		Decision Upheld ³			
	No.	%	No.	%	No.	%	No.	%	No.	%	No.	%	No.	%	No.	%	No.	%		
Attendance Allowance	650	200	31	450	69	580	140	24	430	74	840	210	25	620	74	890	230	26	650	73
Disability Living Allowance	13,800	5,600	41	8,000	58	12,700	4,800	38	7,800	61	15,900	6,200	39	9,400	59	19,100	7,500	39	11,300	59
Bereavement Benefit	110	7	6	100	93	80	-	-	76	95	87	10	11	77	89	88	13	15	75	85
Carer's Allowance	200	25	13	170	86	200	22	11	170	87	260	29	11	230	88	340	49	14	290	84
Child Benefit Lone Parent	280	18	6	260	93	260	30	11	230	88	310	27	9	280	90	280	33	12	250	88
Child Support Allowance	850	360	42	470	55	630	280	44	330	53	620	250	41	330	53	750	290	39	430	57
Tax Credits	280	36	13	250	87	440	32	7	400	92	450	50	11	390	88	580	48	8	520	90
Credits (Other)	-	-	-	-	-	0	0	-	0	-	-	0	0	-	-	0	0	-	0	-
COEG	0	0	-	0	-	0	0	-	0	-	-	0	0	-	-	-	0	0	-	-
Compensation Recovery Unit	55	21	38	33	60	49	20	41	29	59	42	22	52	20	48	60	32	53	28	47
Housing/Council Tax benefit	2,100	520	24	1,600	75	2,000	410	21	1,500	78	1,800	410	23	1,400	77	2,200	430	20	1,700	79
Disability Working Allowance	-	0	0	-	-	0	0	-	0	-	0	0	-	0	-	-	0	0	-	-
Employment Support Allowance	7,600	2,500	32	5,100	67	31,000	11,400	37	19,300	62	40,900	15,400	38	25,200	62	41,800	15,700	38	25,900	62
Health in Pregnancy Grant	18	-	-	17	94	72	6	8	66	92	65	-	-	61	94	50	-	-	47	94
Home Responsibilities Protection	-	0	0	-	-	8	0	-	8	100	6	-	-	5	83	-	-	-	-	-
Incapacity Benefit	12,000	6,100	50	5,900	49	7,900	3,900	49	4,000	50	7,400	3,700	50	3,700	50	6,200	3,200	52	3,000	48
Income Support	3,100	850	27	2,200	72	2,600	670	26	1,900	73	2,300	640	28	1,600	71	2,300	590	25	1,700	73
Industrial Death Benefit	0	0	-	0	-	-	-	-	0	0	0	0	-	0	-	0	0	-	0	-
Industrial Injuries Disablement Benefit	1,400	540	37	860	60	1,700	540	32	1,100	64	1,800	580	33	1,100	65	1,800	610	34	1,100	63
Job Seekers Allowance	4,800	820	17	4,000	83	6,300	750	12	5,500	88	8,400	1,200	14	7,200	85	9,300	1,400	15	7,900	85
Lookalikes	0	0	-	0	-	-	-	-	0	0	-	0	0	-	-	0	0	-	0	-
Maternity Benefit/Allowances	39	6	15	33	85	38	5	13	33	87	43	-	-	41	95	23	-	-	22	96
Others (Extinct/rare Benefits)	13	6	46	7	54	11	5	45	6	55	11	-	-	6	55	7	-	-	6	86
Penalty Proceedings	0	0	-	0	-	0	0	-	0	-	0	0	-	0	-	-	0	0	-	-
Pensions Credit	260	71	27	190	72	260	60	23	200	76	260	66	25	190	74	320	78	25	240	75
Retirement Pension	170	10	6	160	93	120	-	-	120	97	160	11	7	150	91	150	10	6	140	93
Severe Disablement Benefit/Allowance	30	12	40	18	60	24	9	38	15	63	20	7	35	13	65	30	14	47	16	53
Social Fund	960	120	12	840	87	910	97	11	810	89	940	75	8	860	91	1,400	85	6	1,300	93
Vaccine Damage Appeals	0	0	-	0	-	-	-	-	-	-	-	0	0	-	-	0	0	-	0	-
Total	48,800	17,700	36	30,700	63	67,800	23,200	34	44,000	65	82,500	28,900	35	52,900	64	87,700	30,300	35	56,600	65

Source: SSCS Quarterly and Annual Reconciled Returns

Figures may not add to totals because of rounding. Quarterly data is reconciled at the end of the year.

. Not applicable

.. Not available

- Small Value

0 Nil

(r) Revised data

(p) Provisional data

¹ The total number of cases cleared at hearing includes some withdrawals. Thus, it is not the total of those decisions in favour and those upheld.

² Decision in favour of the appellant

³ Decision made by 1st Tier Agency upheld by the Tribunal

Table 1.2e Immigration and Asylum Outcomes by Quarter and Case Type ¹

	2009-10						2010-11						2011-12 ^P											
	Q2			Q2			Q1 ^P			Q2 ^P														
	Allowed No.	%	Dismissed No.	%	Withdrawn No.	%	Allowed No.	%	Dismissed No.	%	Withdrawn No.	%	Allowed No.	%	Dismissed No.	%	Withdrawn No.	%						
First Tier Tribunal (Immigration and Asylum Chamber)	19,100	36	29,500	56	4,300	8	17,000	42	17,700	43	6,200	15	13,000	39	14,800	44	5,800	17	11,400	35	14,400	44	7,000	21
Asylum	1,300	30	2,800	64	230	5	1,200	26	3,100	67	280	6	1,000	26	2,500	64	360	9	890	24	2,400	67	330	9
Managed Migration	3,900	50	3,200	41	690	9	7,000	54	4,700	36	1,300	10	4,800	50	3,900	41	920	10	3,400	43	3,600	45	980	12
Entry Clearance	8,200	31	16,400	61	2,100	8	3,300	40	3,100	38	1,700	21	3,300	38	3,100	36	2,400	27	3,600	40	3,300	37	2,100	24
Family Visit Visa	5,500	40	6,900	51	1,200	9	5,400	36	6,600	45	2,800	19	3,800	34	5,100	47	2,100	19	3,400	29	4,900	41	3,500	30
Deport and others	60	23	180	68	24	9	81	29	170	61	28	10	63	23	180	66	30	11	57	30	110	58	22	12

Source: Immigration and Asylum Quarterly and Annual Reconciled Returns

Figures may not add to totals because of rounding. Quarterly data is reconciled at the end of the year.

. Not applicable

.. Not available

- Small Value

0 Nil

(r) Revised data

(p) Provisional data

¹ Figures are based upon decisions at a hearing and on papers.

Table 1.3 Tribunals Caseload Outstanding¹ by Quarter and Jurisdiction

	2009-10		2010-11			2011-12 ^P	
	Q2	Q1 ³	Q2 ³	Q3 ³	Q4	Q1 ^P	Q2 ^P
Tribunals	524,900	658,000	706,500	722,700	751,600	750,000	742,800
First Tier Tribunal (Immigration and Asylum Chamber)	74,700	52,300	50,300	45,000	42,400	34,500	37,200
Employment Appeal ²	..	360	380	400	370	310	340
Employment ³	338,300	416,600	442,700	453,600	484,300	503,100	506,800
Singles	35,800	31,600	30,500	31,400	28,500	28,700	27,800
Multiples	302,500	385,000	412,100	422,200	455,800	474,300	478,900
Social Security and Child Support	85,400	158,400	182,600	193,400	194,200	179,700	162,700
Mental Health	5,400	4,700	4,800	4,300	4,500	4,300	4,000
Adjudicator to HM Land Registry	1,300	1,500	1,400	1,300	1,200	1,300	1,200
Asylum Support	49	270	230	160	140	150	83
Care Standards	140	110	110	58	45	37	34
Charities	-	0	-	-	-	-	-
Claims Management Services	0	-	-	-	5	-	-
Consumer Credit Appeals	-	6	7	8	8	10	8
Criminal Injuries Compensation	2,700	2,800	2,500	2,300	2,200	2,200	2,000
Environmental Jurisdiction	.	0	0	0	0	0	0
Estate Agents Appeals	-	-	0	0	0	0	-
Financial Services and Markets & Pensions Regulator ⁴	24	24	35	470	710	1,200	1,200
First Tier Tribunals (Immigration Services)	-	-	-	-	-	-	-
Gambling Appeals	-	-	-	-	-	-	-
Gender Recognition Panel	83	110	120	110	78	100	87
Information Rights	64	120	98	95	130	120	160
Lands	1,200	1,600	1,400	1,100	640	590	690
Local Government Standards in England	17	15	14	5	6	8	14
Pensions Regulator ⁴	-	-	5	8	8	.	.
Primary Health Lists	49	37	37	43	42	32	27
Reserve Forces Appeals	-	-	0	-	-	0	0
Residential Property Tribunal	2,800
Special Educational Needs and Disability	1,300	1,300	1,400	1,400	1,000	1,300	1,200
Tax first tier	11,600	15,600	16,300	16,700	17,600	19,200	20,300
Transport	170	120	120	120	120	90	100
Upper Tribunal (Administrative Appeals Chamber)	1,100	1,200	1,100	1,200	1,100	1,100	1,200
War Pensions and Armed Forces Compensation	1,200	1,000	980	1,000	950	790	690

Source: Tribunals Quarterly and Annual Reconciled Returns

Figures may not add to totals because of rounding. Quarterly data is reconciled at the end of the year.

. Not applicable

.. Not available

- Small Value

0 Nil

(r) Revised data

(p) Provisional data

¹ As on the last day of the period

² Registered appeals outstanding. (These figures do not include potential appeals received)

³ The Employment Tribunal caseload outstanding for the first and second quarters of 2010-11 only have a partial caseload for Nottingham and Leicester (see Explanatory Notes) and Nottingham and Leicester caseload outstanding in Q3 2010-11 may be incomplete.

⁴ Pensions Regulator is combined with Financial Services & Markets from Q1 2011-12. Part of Upper Tribunal (Tax and Chancery Chamber).

Table 1.4 Tribunals Timeliness Measure by Quarter and Jurisdiction

	Description of Measure	2010-11					2011-12 ^P	
		Q1	Q2	Q3	Q4	Annual Total	Q1 ^P	Q2 ^P
TRIBUNALS OVERALL PI	The percentage of applications dealt with in target time	52	49	52	50	51	51	50
First Tier Tribunal (Immigration and Asylum Chamber)	Receipt in IA to promulgation ² by an immigration judge (all cases)	55	52	60	61	57	69	73
Asylum	Asylum cases, percentage promulgated in 6 weeks	58	59	57	58	58	60	57
Managed Migration	Managed migration cases, percentage promulgated within 8 weeks	25	24	34	49	33	58	70
Entry Clearance	Entry clearance, percentage within 30 weeks from receipt to promulgation	70	68	70	71	70	75	65
Family Visit Visa	Family visitor, percentage within 25 weeks from receipt to promulgation	68	65	76	66	69	78	87
Employment Appeal	The percentage of appeals where the first substantive hearing takes place within 26 weeks of registration.	79	77	68	73	74	85	93
Employment¹	The percentage of single accepted cases where hearing begins within 26 weeks of receipt	58	59	60	60	59	62	65
Social Security and Child Support	The percentage of appeals where the final outcome is promulgated within 16 weeks of the receipt at SSCS	48	46	47	45	46	42	40
Mental Health	Section 2 (Mental Health Act 1983) cases that are listed for hearing within 7 days of receipt (statutory target)	97	99.5	99.9	99.7	99	99.9	100
	The percentage of non-restricted cases disposed of within 9 weeks of receipt	53	50	47	55	51	66	64
	The percentage of Restricted Patient cases disposed of within 17 weeks of receipt	63	66	60	65	64	77	80
Adjudicator to HM Lands Registry	The percentage of cases disposed ³ of within 70 weeks of receipt	74	68	64	68	69	75	76
Asylum Support	The percentage of cases to be determined ⁴ within 12 working days of receipt	36 ^r	43 ^r	62 ^r	84 ^r	52 ^r	91 ^{P,r}	86 ^P
Care Standards	The percentage of cases to be determined within 40 weeks of receipt	89	74	81	81	81	67	84
Charities	The percentage of cases disposed of within 30 weeks of receipt	100	100	100	100	100	100	100
Claims Management Services	The percentage of cases to be disposed of within 50 weeks of receipt	100	-	0	-	33	100	100
Consumer Credit Appeals	The percentage of cases to be disposed of within 25 weeks of receipt	33	-	0	50	33	50	17
Criminal Injuries Compensation	The percentage of cases disposed of within 6 months of receipt	69	63	67	55	63	.	.
	The percentage of cases disposed of within 32 weeks	68	67
Environmental Jurisdiction	The percentage of cases disposed of within 30 weeks	-	-	-	-	-	-	-
Estate Agents Appeals	The percentage of cases disposed of within 27 weeks of receipt	0	0	-	-	0	-	-
Financial Services and Markets & Pensions Regulator⁵	The percentage of cases disposed of within 50 weeks of receipt	54	83	50	-	61	60	11
First Tier Tribunal (Immigration Services)	The percentage of cases disposed of within 30 weeks of receipt	100	100	100	100	100	100	50

Table 1.4 Tribunals Timeliness Measure by Quarter and Jurisdiction (continued)

	Description of Measure	2010-11					2011-12		Percentage
		Q1	Q2	Q3	Q4	Annual	Q1	Q2	
Gambling Appeals	The percentage of cases disposed of within 30 weeks of receipt	-	-	100	0	67	100	-	
Gender Recognition Panel	The percentage of cases disposed of within 20 weeks of receipt	77	71	74	79	76	76	80	
Information Rights	The percentage of cases disposed of within 30 weeks of receipt	85	67	73	73	74	83	64	
Lands									
	Cat 1 The percentage of cases disposed of in 24 weeks of registration	97	94	83	88	90	93	74	
	Cat 2 The percentage of cases disposed of in 70 weeks of registration	77	49	32	26	41	66	72	
Local Government Standards in England	The percentage of appeals to be held and determined within 16 weeks of receipt.	89	82	60	80	77	100	100	
Pensions Regulator⁵	The percentage of cases disposed of within 50 weeks of receipt	100	-	-	-	100	.	.	
Primary Health Lists	The percentage of cases where the decision was issued within 16 weeks of receipt of reference	79	67	79	72	74	39	60	
Reserve Forces Appeals	The percentage of determinations (from hearing to judgement) issued within 4 weeks	100	-	100	100	100	100	100	
	The percentage of claims served (accepted) within 5 days	100	100	100	100	100	0	100	
Residential Property Tribunal	The percentage of receipts heard or otherwise disposed of within 10 weeks of receipt (Rent Assessment Committee)	92	
	The percentage of receipts heard or otherwise disposed of within 20 weeks of receipt (Land Valuation Tribunal)	83	
	The percentage of receipts heard or otherwise disposed of within 9 weeks of receipt (Right to Buy)	100	
	The percentage of receipts heard or otherwise disposed of within 20 weeks of receipt (Housing Act 2004)	94	
	The percentage of receipts heard or otherwise disposed of within 15 weeks of receipt (Park Homes)	100	
Special Educational Needs and Disability	The percentage of cases disposed of within 22 weeks of receipt	83	88	82	81	84	75	79	
Tax first tier	The percentage of standard/complex cases disposed of within 70 weeks of receipt	56	61	60	56	58	57	58	
	The percentage of paper cases disposed of in 20 weeks	67	66	84	76	73	88	88	
	The percentage of basic cases disposed of in 20 weeks	62	69	77	86	74	75	76	
Transport	The percentage of cases disposed of within 16 weeks of receipt	90	87	84	91	88	80	96	
Upper Tribunal (Administrative Appeals Chamber)	The percentage of appeals disposed of within 20 weeks of receipt	49	55	60	51	53	45	39	
	The percentage of applications for Leave to Appeal to be disposed within 10 weeks of receipt	62	56	62	47	57	43	41	
War Pensions and Armed Forces Compensation	The percentage of cases disposed of within 20 weeks of receipt	56	58	50	48	53	57	54	

Source: Tribunals Quarterly Reconciled Returns

Figures may not add to totals because of rounding. Quarterly data is reconciled at the end of the year.

- . Not applicable
- .. Not available
- Small Value
- No cases dealt with so KPI could not be calculated

- 0 Nil
- (r) Revised data
- (p) Provisional data

¹ A small number of cases for the Employment Tribunal may be excluded from the 2010-11 figures due to a change of computer system during the year.

² Promulgation is the formal publication of the decision

³ A case is considered to be disposed of when a decision has been made on the case and all work on the case has been completed

⁴ A case is considered to be determined when a decision has been made on the case

⁵ Pensions Regulator is combined with Financial Services & Markets from Q1 2011-12. Part of Upper Tribunal (Tax and Chancery Chamber).

Table 2.1 Special Educational Needs and Disability Discrimination receipts and disposals by Quarter

	2010-11		2011-12 ^P	
	Q3	Q4	Q1 ^P	Q2 ^P
Receipts	640	910	1,100	830
Disposals	690	800	1,000	820

Figures may not add to totals because of rounding. Quarterly data is reconciled at the end of the year.

. Not applicable

.. Not available

- Small Value

0 Nil

(r) Revised data

(p) Provisional data

Special Educational Need Appeals

Receipts and Disposals (1st September - 31st August)

Table 3.1 Registered appeals by type

Types of appeal	2010-11		2009-10	
	No.	% of total	No.	% of total
Against refusal to assess	1,200	33	1,200	35
Against refusal to make a statement	260	7	220	7
Against refusal to re-assess	-	-	44	1
Against refusal to change name of school	9	0	14	0
Against decision to cease to maintain statement	69	2	58	2
Against refusal to amend the statement following a review	180	5	0	-
Against school named in statement	0	-	0	-
Against failure to name a school	0	-	-	-
Against contents of the statement - parts 2 & 3	330	9	380	12
Against contents of the statement - parts 2,3 & 4	1,100	31	1,000	31
Against contents of the statement - part 4	430	12	390	12
Total appeals registered	3,600		3,300	

Table 3.2 Appeals registered by nature of Special Educational Need (SEN)

Nature of SEN	2010-11		2009-10	
	No	% of total	No	% of total
Autistic Spectrum Disorder (ASD)	1,100	31	1,000	31
Behaviour, Emotional and Social Difficulty (BESD)	600	17	490	15
Hearing Impairment (HI)	82	2	80	2
Moderate Learning Difficulty (MLD)	200	5	310	9
Multi Sensory Impairment (MSI)	-	-	8	0
Other (OTH)	8	0	0	0
Physical Disability (PD)	250	7	230	7
Profound and Multiple Learning Difficulty (PMLD)	39	1	61	2
Severe Learning Difficulty (SLD)	67	2	60	2
Specific Learning Difficulty (SpLD)	500	14	540	16
Speech, Language and Communication Needs (SLCN)	430	12	330	10
Unknown	250	7	120	4
Visual Impairment (VI)	48	1	38	1
Total appeals registered	3,600		3,300	

Table 3.3 Decisions by SEN 2010-11

Nature of SEN	Decision in favour of appellant	Decision Revised against appellant	Decision Upheld	TOTAL
Behaviour, Emotional and Social Difficulty (BESD)	11	11	64	86
Hearing Impairment (HI)	1	-	22	26
Moderate Learning Difficulty (MLD)	5	7	37	49
Multi Sensory Impairment (MSI)	0	0	0	0
Other (OTH)	0	0	-	-
Physical Disability (PD)	9	10	43	62
Profound and Multiple Learning Difficulty (PMLD)	0	0	17	17
Severe Learning Difficulty (SLD)	-	-	11	14
Specific Learning Difficulty (SpLD)	12	15	83	110
Speech, Language and Communication Needs (SLCN)	10	5	50	65
Unknown	-	6	10	18
Visual Impairment (VI)	-	0	11	13
Total	80	90	590	770

Outcomes (1st September - 31st August)

Table 3.4 Outcomes of appeals; decided, withdrawn, conceded

	Outcomes 2010-11						Outcomes 2009-10							
	Decided	% of total	Withdrawn	% of total	Conceded	% of total	Total	Decided	% of total	Withdrawn	% of total	Conceded	% of total	Total
<i>Appeals not involving contents of statements</i>														
Refusal to assess	110	8	300	23	920	69	1,300	94	8	220	20	800	72	1,100
Refusal to statement	35	13	68	24	180	63	280	35	17	44	22	120	61	200
Refusal to re-assess	-	-	6	43	7	50	14	6	15	14	36	19	49	39
Refusal to amend statement following a review	5	5	88	92	-	-	96	0	-	0	-	0	-	0
Cease to maintain	14	19	57	79	-	-	72	14	26	40	74	0	-	54
Totals	170	9	520	29	1,100	62	1,800	150	11	320	23	940	67	1,400
<i>Contents of statement</i>														
Parts 2 and/or 3, not 4	80	19	340	81	0	-	420	67	23	230	77	0	-	290
Parts 2, 3 and 4	450	37	750	62	6	1	1,200	360	42	500	58	0	-	860
Part 4 only	71	16	350	80	16	4	440	84	24	260	76	0	-	350
Refusal to change school named	-	-	8	67	-	-	12	-	-	-	-	-	-	9
Failure to name a school	0	-	-	-	0	-	-	0	-	-	-	0	-	-
Totals	600	29	1,500	70	24	1	2,100	510	34	1,000	66	-	-	1,500
Total decisions issued	770	20	2,000	51	1,100	29	3,900	660	23	1,300	45	940	32	2,900

Table 3.5 Outcomes by Special Educational Need (SEN) category

Nature of SEN	Decided		Withdrawn		Conceded		Total	
	No	% of total	No	% of total	No	% of total		
Autistic Spectrum Disorder (ASD)	300	25	620	51	290	24	1,200	2010-11
Behaviour, Emotional and Social Difficulty (BESD)	86	14	340	43	210	41	630	
Hearing Impairment (HI)	27	30	52	58	11	13	90	
Moderate Learning Difficulty (MLD)	49	20	134	45	65	34	250	
Multi Sensory Impairment (MSI)	-	-	-	-	0	-	5	
Other (OTH)	-	-	-	-	-	-	5	
Physical Disability (PD)	61	23	140	53	65	24	270	
Profound and Multiple Learning Difficulty (PMLD)	16	36	25	64	-	-	45	
Severe Learning Difficulty (SLD)	14	21	40	56	14	17	68	
Specific Learning Difficulty (SpLD)	110	20	240	35	200	40	550	
Speech, Language and Communication Needs (SLCN)	65	14	240	51	150	33	450	
Unknown	18	8	110	31	110	57	240	
Visual Impairment (VI)	13	26	24	49	13	17	50	
Total	770	20	2,000	51	1,100	29	3,900	

Special Educational Need Appeals							
Autistic Spectrum Disorder (ASD)	230	28	390	48	200	25	820
Behaviour, Emotional and Social Difficulty (BESD)	68	16	190	43	180	41	430
Hearing Impairment (HI)	20	29	40	58	9	13	69
Moderate Learning Difficulty (MLD)	70	21	150	45	110	34	330
Multi Sensory Impairment (MSI)	-	-	-	-	0	-	-
Other (OTH)	0	-	0	-	0	-	0
Physical Disability (PD)	40	23	93	53	43	24	180
Profound and Multiple Learning Difficulty (PMLD)	16	30	34	64	-	-	53
Severe Learning Difficulty (SLD)	17	27	35	56	11	17	63
Specific Learning Difficulty (SpLD)	130	25	180	35	200	40	500
Speech, Language and Communication Needs (SLCN)	45	16	140	51	91	33	280
Unknown	19	13	47	31	86	57	150
Visual Impairment (VI)	12	34	17	49	6	17	35
Total	660	25	1,300	44	940	30	2,900

2008-10

Table 3.6 Breakdown of child's ethnic origin

	2010-11	%	2009-10	%
Bangladeshi	12	0	12	0
Black African	47	1	69	2
Black Caribbean	43	1	50	2
Black - Other	28	1	26	1
Chinese	12	0	8	0
Indian	32	1	41	1
Pakistani	61	2	59	2
White	2,100	58	2,100	65
Other	400	11	140	4
Not completed	860	24	740	23
Total	3,600		3,300	

Table 3.7 Legal representation for parents and LEAs at hearings

	2010-11	2009-10
<i>Legal representative at hearing</i>		
Parents	..	18
LEA	..	15
<i>Other representative at hearing</i>		
Parents	..	18
<i>Legal representative through appeal process</i>		
Parents	..	18
<i>Voluntary representative through appeal process</i>		
Parents	..	6

Disability Discrimination Claims

Receipts and Disposals (1st September - 31st August)

Table 4.1 Registered appeals by type

Type of claim	2010-11	% of total	2009-10	% of total
Child's admission to a school	0	0	-	-
Child's permanent exclusion from school	0	0	-	-
Child's temporary exclusion from school	-	-	21	28
Other issues to do with education and associated services	10	9	47	64
Claims registered uncategoryed	100	90	0	0
Total claims registered	110		74	

Table 4.2 Appeals registered by nature of disability

Nature of SEN	2009-10		2008-09	
	2010-11	% of total	2009-10	% of total
Ability to learn	9	8	70	95
Ability to lift	0	0	0	0
Contenance	0	0	0	0
Eyesight	0	0	0	0
Hearing	-	-	0	0
Manual dexterity	0	0	0	0
Memory	0	0	0	0
Mental health problem	0	0	0	0
Mobility	0	0	-	-
Perception of risk	-	-	0	0
Physical co-ordination	0	0	-	-
Progressive illness	0	0	0	0
Severe disfigurement	0	0	0	0
Speech	0	0	-	-
Uncategoryed	100	90	0	0
Total appeals registered	110		74	

Outcomes (1st September - 31st August)

Table 4.3 Outcomes of claims by type: decided and withdrawn

	Outcomes 2010-11					Outcomes 2009-10				
	Decided	% of total	Withdrawn	% of total	Total	Decided	% of total	Withdrawn	% of total	Total
Another issue with child's education	24	62	15	38	39	14	52	13	48	27
Child's admission to a school	-	-	0	0	-	-	-	-	-	7
Child's permanent exclusion from school	-	-	0	0	-	-	-	0	0	-
Child's temporary exclusion from school	6	67	-	-	9	13	50	13	50	26
Disability Discrimination Claims Uncategoryed	22	76	7	24	29	0	0	0	0	0
Totals	55	69	25	31	80	33	53	29	47	62

Table 4.4 Outcomes of claims: upheld and dismissed

	Outcomes 2010-11					Outcomes 2009-10				
	Upheld	% of total	Dismissed	% of total	Total	Upheld	% of total	Dismissed	% of total	Total
Another issue with child's education	12	43	16	57	28	7	47	8	53	15
Child's admission to a school	0	0	-	-	-	0	0	-	-	-
Child's permanent exclusion from school	-	-	0	0	-	-	-	-	-	-
Child's temporary exclusion from school	-	-	5	83	6	-	-	10	77	13
Disability Discrimination Claims Uncategoryed	13	59	9	41	22	0	0	0	0	0
Totals	27	46	32	54	59	11	32	23	68	34

Table 4.5 Breakdown of child's ethnic origin

	2010-11	2009-10
Bangladeshi	0	0
Black African	0	-
Black Caribbean	-	-
Black - Other	0	-
Chinese	0	0
Indian	-	0
Pakistani	0	-
White	29	50
Other	-	-
Not completed	77	14
Total	110	74

Table 4.6 Legal representation for parents and LEAs at hearings

	2010-11	2009-10
<i>Legal representative at hearing</i>		
Parents	..	4
LEA	..	4
<i>Other representative at hearing</i>		
Parents	..	4
<i>Legal representative through appeal process</i>		
Parents	..	14
<i>Voluntary representative through appeal process</i>		
Parents	..	11

Figures may not add to totals because of rounding

.. Not applicable

- Not available

- Small Value

Appendix 1 Appeals registered per local authority (1st September - 31st August)

Local Authority	2010-11	Per 10,000 of school population	2009-10	Local Authority	2010-11	Per 10,000 of school population	2009-10
Barking & Dagenham	11	3.99	13	Medway	55	13.73	52
Barnet	38	7.71	39	Merton	30	11.67	30
Barnsley	16	5.58	6	Middlesbrough	-	-	5
Bath & NE Somerset	11	4.45	-	Milton Keynes	9	2.23	14
Bedfordshire	-	-	-	Newcastle upon Tyne	-	-	0
Bexley	34	8.98	26	Newham	17	3.43	12
Birmingham	160	9.18	130	Newport	0	0.00	0
Blackburn	6	2.43	8	Norfolk	89	8.48	74
Blackpool	0	0.00	-	North East Lincolnshire	-	-	-
Bolton	-	-	9	North Lincolnshire	-	-	0
Bournemouth	7	3.44	5	North Somerset	19	7.38	26
Bracknell Forest	5	3.16	4	North Tyneside	-	-	-
Bradford	8	0.99	14	North Yorkshire	18	2.15	22
Brent	10	2.49	7	Northamptonshire	24	2.26	17
Brighton and Hove	26	8.80	26	Northumberland	11	2.75	7
Bristol City	38	7.52	37	Nottingham City	11	2.80	18
Bromley	59	12.94	39	Nottinghamshire	48	4.88	33
Buckinghamshire	21	2.87	27	Oldham	12	3.25	7
Bury	-	-	7	Oxfordshire	16	1.84	19
Calderdale	17	4.86	15	Peterborough	9	2.97	7
Cambridgeshire	36	4.60	59	Plymouth	-	-	-
Camden	16	7.30	16	Poole	6	3.16	0
Central Bedfordshire	11	2.04	0	Portsmouth	6	2.53	5
Cheshire East	25	4.45	0	Reading	5	2.72	-
Cheshire West and Chester	18	3.19	0	Redbridge	27	5.85	23
Cornwall	18	2.58	22	Redcar and Cleveland	-	-	-
Coventry	8	1.81	10	Richmond upon Thames	13	6.16	5
Croydon	67	13.04	58	Rochdale	-	-	-
Cumbria	12	1.82	19	Rotherham	-	-	11
Darlington	0	0.00	-	Rutland	-	-	6
Derby City	6	1.53	25	Salford	23	7.42	14
Derbyshire	46	4.33	32	Sandwell	19	4.26	9
Devon	38	4.19	35	Sefton	15	4.10	12
Doncaster	6	1.28	-	Sheffield	79	10.71	68
Dorset	13	2.39	16	Shropshire	17	5.22	12
Dudley	6	1.48	5	Slough	-	-	6
Durham	43	6.53	33	Solihull	19	5.40	26
Ealing	32	6.90	21	Somerset	37	5.66	36
East Riding of Yorkshire	5	1.26	7	South Gloucestershire	10	2.79	9
East Sussex	59	9.60	53	South Tyneside	-	-	-
Enfield	57	11.07	50	Southampton	17	6.25	16
Essex	110	5.87	130	Southend	8	2.95	16
Gateshead	15	5.29	-	Southwark	25	6.98	25
Gloucestershire	45	5.56	41	St Helens	-	-	0
Greenwich	40	11.43	23	Staffordshire	49	4.24	37
Hackney	37	13.69	43	Stockport	16	4.40	12
Halton	11	6.03	5	Stockton-on-Tees	-	-	-
Hammersmith & Fulham	17	9.39	24	Stoke-on-Trent	23	6.54	28
Hampshire	140	8.18	120	Suffolk	69	7.30	64
Haringey	28	8.76	20	Sunderland	-	-	-
Harrow	16	5.14	24	Surrey	157	11.11	147
Hartlepool	0	0.00	-	Sutton	53	17.33	26
Havering	8	2.47	-	Swindon	6	2.03	10
Herefordshire	8	3.53	9	Tameside	7	2.03	10
Hertfordshire	100	5.82	100	Telford & Wrekin	9	3.40	-
Hillingdon	21	4.63	12	Thurrock	8	3.38	7
Hounslow	16	4.57	15	Torbay	-	-	-
Isle of Wight	26	14.42	9	Tower Hamlets	6	1.51	-
Isles of Scilly	0	0.00	0	Trafford	22	6.20	13
Islington	-	-	13	Wakefield	6	1.20	-
Kensington & Chelsea	18	15.70	10	Walsall	9	1.89	9
Kent	140	7.04	140	Waltham Forest	11	2.82	10
Kingston upon Thames	12	5.25	11	Wandsworth	29	9.47	33
Kingston-upon-Hull, City	6	1.68	-	Warrington	-	-	-
Kirklees	12	1.90	10	Warwickshire	16	2.24	16
Knowsley	-	-	-	West Berkshire	6	2.37	-
Lambeth	42	13.07	36	West Sussex	35	3.35	35
Lancashire	67	4.21	97	Westminster	20	9.36	15
Leeds	33	3.21	19	Wigan	-	-	-
Leicester City	14	3.16	12	Wiltshire	46	7.28	38
Leicestershire	29	3.12	19	Windsor & Maidenhead	9	4.48	13
Lewisham	47	-	55	Wirral	-	-	11
Lincolnshire	33	3.54	68	Wokingham	-	-	7
Liverpool	38	5.62	20	Wolverhampton	-	-	-
Luton	6	1.80	5	Worcestershire	33	4.31	30
Manchester	26	3.82	19	York City	-	-	-
				Total	3,489	4.88	3,195

Per School Population Source DfE from the 2011 School Census

Figures may not add to totals because of rounding

- Not applicable

... Not available

- Small Value