

Information Directorate

National Insurance Number
Allocations to Adult Overseas
Nationals Entering the UK

For 2008-09

http://research.dwp.gov.uk/asd/asd1/niall/nino_allocation.asp



Contents

1) Introduction and definitions	Page 2
2) Differences to previously published National Statistics	Page 2
3) Headline figures	Page 3
4) Registrations by year and world area	Page 4
5) Quarterly time series analysis	Page 5
6) Age and Gender	Page 6
7) Out-of-work benefits	Page 7
8) Area Analysis	Page 8
Appendix A – Sources	Page 9
Appendix B – Tables	Page 11

- Table 1: NINo registrations to adult overseas nationals entering the UK, by year of registration and world area of origin.
- Table 2: NINo registrations to adult overseas nationals entering the UK, top ten countries by year of registration.
- Table 3: NINo registrations to adult overseas nationals entering the UK, by quarter of registration and world area of origin.
- Table 4: NINo registrations to adult overseas nationals entering the UK, by gender and age, 2008/09.
- Table 5: NINo registrations to adult overseas nationals entering the UK from EU Accession Countries, by quarter of registration and nationality.
- Table 6: NINo registrations to adult overseas nationals entering the UK, by year of registration and Government Office Region.
- Table 7: NINo registrations to adult overseas nationals entering the UK and claiming an out-of-work benefit within 6 months of registration, by year of registration.

1. Introduction and definitions

1.1 - This report provides statistics regarding National Insurance Numbers (NINo) allocated to adult overseas nationals entering the United Kingdom (UK). A NINo is generally required by any overseas national looking to work or claim benefits / tax credits in the UK, including the self employed or students working part time.

1.2 - The figures provide a measure of in-migration (inflow) for adult overseas nationals registering for a NINo, however do not reflect emigration (outflow, i.e. migrants who leave the UK) or the overall migrant population (stock).

1.3 - The figures reflect adult overseas nationals allocated a NINo through the adult registration scheme. In addition there will be a small number of overseas nationals (aged 16-19 yrs) allocated a NINo automatically through the Juvenile Registration scheme. This occurs when the individual has previously been allocated a child registration number. These juvenile cases are not captured by the statistics.

1.4 - The registration date referred to in this report represents the date the information on the individual was processed on HM Revenue and Customs' National Insurance Recording System (NIRS).

1.5 - For reporting purposes, throughout this document Accession nationals refers to overseas nationals from the 12 Accession countries. These are Cyprus, Czech Republic, Estonia, Hungary, Latvia, Lithuania, Malta, Poland, Slovakia and Slovenia, which joined on the European Union (EU) on 1st of May 2004, and Romania and Bulgaria, who have joined on 1st January 2007.

2. Improvements to National Statistics

2.1 – This is the second annual analytical report. In August 2008, a number of changes and improvements were made to the way DWP reports on NINOs allocated to adult overseas nationals. These were as follows:

- Improvements to the area allocation process and more frequent scans provide a more accurate account of individuals' location at point of registration.
- The basis of the reporting year has been changed from tax year (6th April to 5th April) to financial year (1st April to 31st March).
- A new quarterly time series backdated to January 2002 has been produced.
- The Arrivals series has been withdrawn since it was subject to significant levels of future revision.
- Use of fixed datasets to eliminate any retrospection in future reports.

Tabulation tool

2.2 - All tables included in the following report and further information on NINo registrations to adult overseas nationals can be obtained using the Department's internet-based interactive tabulation tool (see web link below). Users are able to specify the variables they are interested in and tabulate accordingly.

http://research.dwp.gov.uk/asd/asd1/niall/nino_allocation.asp

3. Headline Figures

- The total number of NINo registrations to adult overseas nationals in 2008/09 was 686 thousand, a decrease of 47 thousand (6.4%) on the previous year. This is the first annual percentage decrease in the period for which figures are available. This overall fall in NINo registrations masks some significant variations by world area.

Within Europe:

- Registrations to Accession nationals decreased by 22.7% from 332 thousand in 2007/08 to 257 thousand in 2008/09. Poland forms the largest nationality: 134 thousand NINo registrations were made to Polish citizens in 2008/09 (a 36.2% decrease from the previous year).
- Registrations to other EU nationals (120 thousand during 2008/09) rose by 13 thousand, an increase of 11.8% on the previous year.

Outside of Europe:

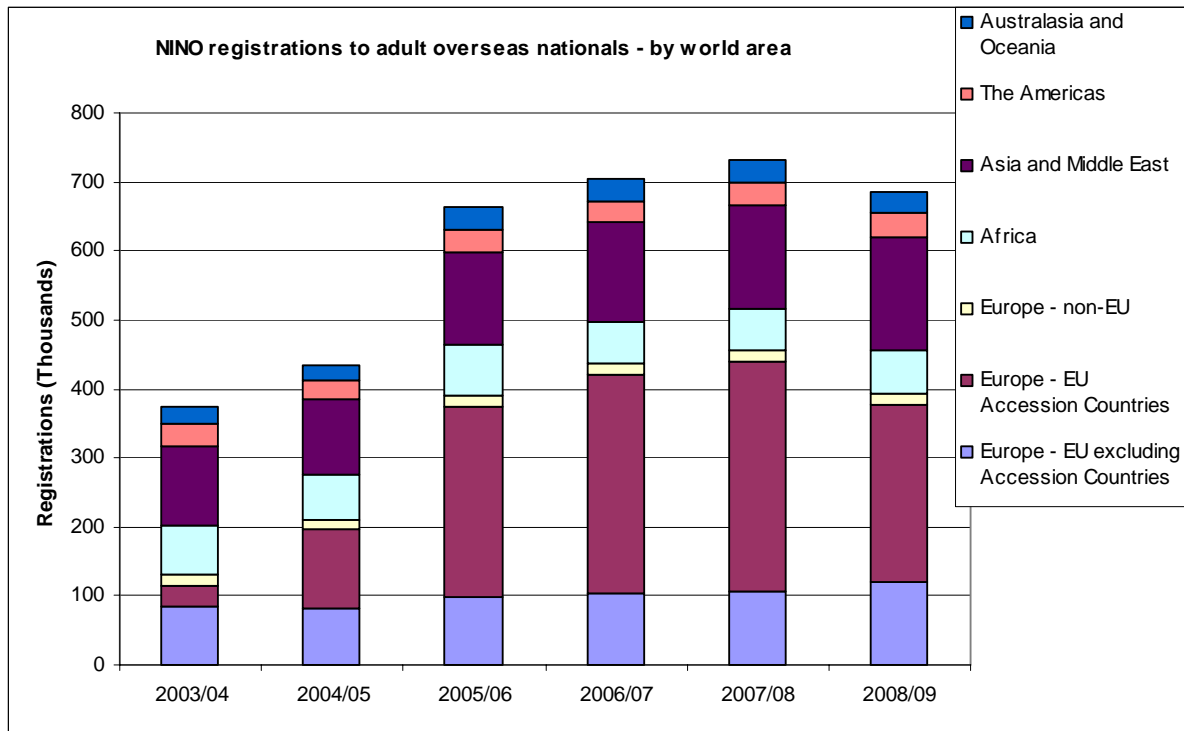
- Registrations to Non European nationals increased by 6.1% to 292 thousand in the year to 2008/09.
- 163 thousand NINOs were registered to Asian and Middle Eastern nationals during 2008/09 - an increase of 8.8% on the previous year. Similarly registrations to African nationals and those from the Americas rose by 6.2% and 11.7% respectively. Registrations from Australasia and Oceania fell by 11.5%.

Other Key statistics:

- In 2008/09, there were 429 thousand registrations to non Accession nationals, a 7.1% increase from the previous year.
- Registrations from Bulgaria and Romania, who joined the EU on the 1st of January 2007 are levelling off after an initial rise in 2007/08. Registrations to Bulgarian and Romanian nationals increased by 2 thousand and 1 thousand respectively in 2008/09 compared to the previous year.
- Over 80% of Local Authorities have seen the number of NINO registrations to adult overseas nationals fall in 2008/09 from the previous year. Approximately 1 in 10 have seen NINo registrations increase by more than 10% in the year to 2008/09, however for some Local Authorities this only represents a relatively small number of registrations.
- The London Government Office Region accounts for 40.2% of all registrations in 2008/09, an increase from 37.2% from the previous year. The North East has the fewest registrations with 1.7% of the UK total.
- Of the 733 thousand registrations in 2007/08, 21 thousand (2.9%) were claiming an out of work benefit – Jobseekers Allowance (JSA), Incapacity Benefit (IB) or Income Support (IS) – within 6 months of NINo registration. . This is down from 12.5% in 2002/03 and is the same rate as at 2006/07.

4. Registrations by year and world area.

Fig 1: NINO registrations to Adult Overseas Nationals, by year of registration and world area.

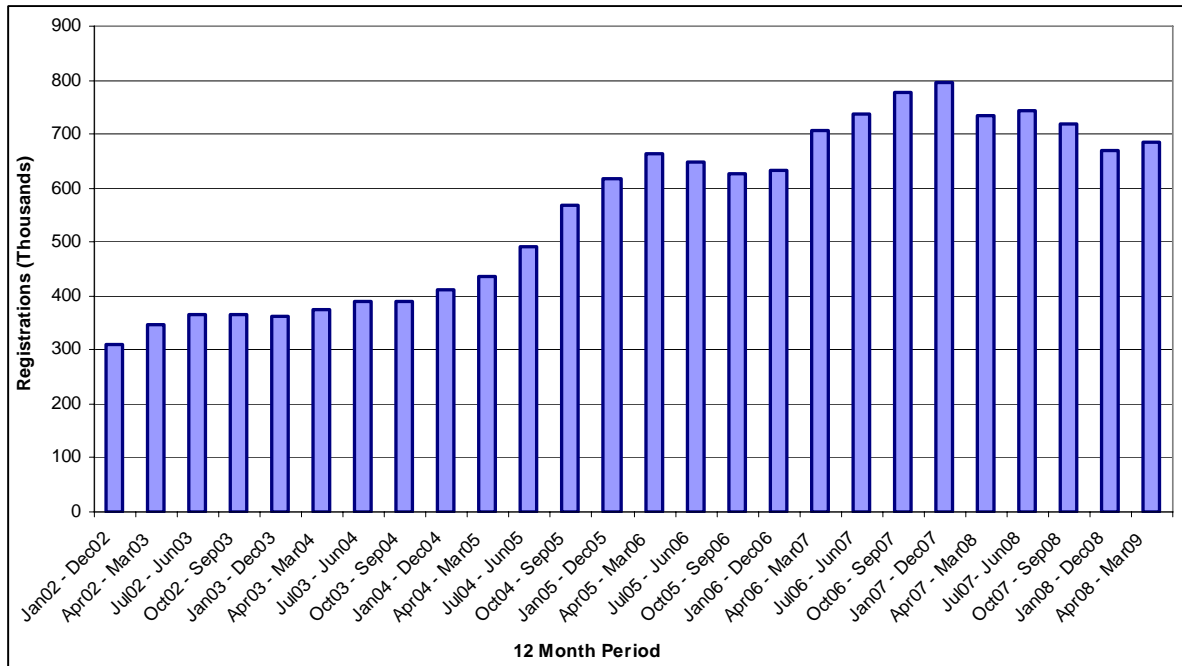


Source: 100% extract from National Insurance Recording System

- Registrations have risen from 346 thousand in 2002/03 to 686 thousand in 2008/09, with the most significant increase coming from nationals from the Accession countries. However the number of registrations have now started to decrease.
- Registrations to nationals from the EU Accession countries decreased by 75 thousand in the year to 2008/09.
- Poland remains the biggest contributor - registrations in respect of Polish nationals made up 19.6% of all registrations to adult overseas nationals in 2008/09.
- However, the number of registrations to Polish nationals has fallen by 76 thousand from the previous year.
- In the year to 2007/08, registrations from Bulgarian and Romanian (A2) nationals showed the largest increase of all Accession nationals, rising by 11 thousand and 19 thousand respectively. Registrations to A2 nationals are now levelling off as the number of registrations to Bulgarian and Romanian nationals increased by 1 thousand and 2 thousand respectively in the year to 2008/09.
- Registrations to non-EU nationals (all world areas excluding EU and Accession Countries) showed a 5.4% increase in 2008/09 compared to the previous year.

5. Quarterly time series analysis

Fig 2: NINo registrations to Adult Overseas Nationals, registration time series by quarter (12 month period to the end of the quarter).



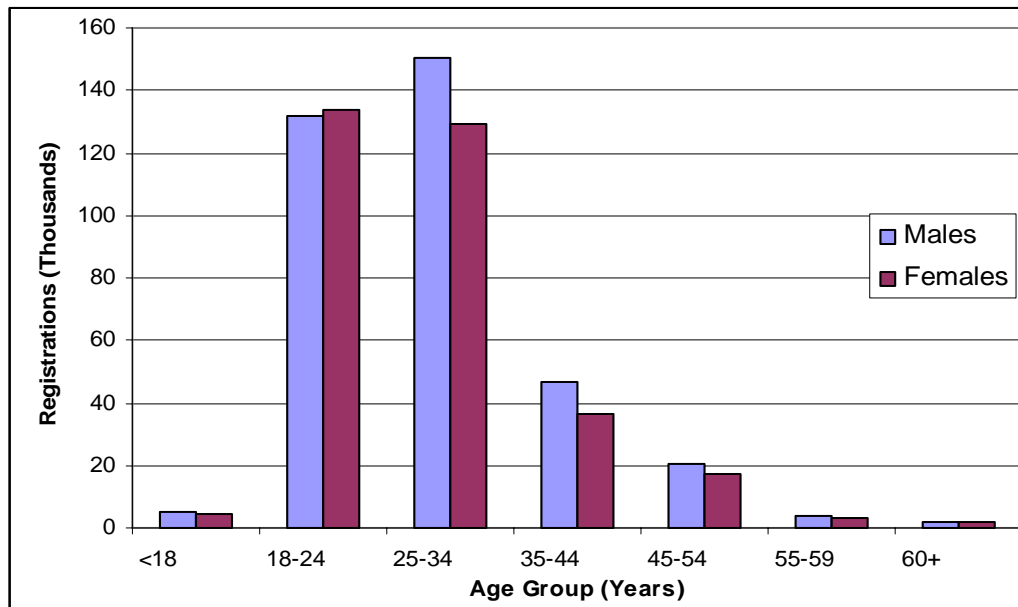
Source: 100% extract from National Insurance Recording System

5.1 - The 12 month rolling total shows a historically increasing trend from 2002, with the number of registrations peaking in the later half of 2007, levelling out and now showing signs of falling.

5.2 - The raw quarterly time series shows a number of peaks and troughs. The series is reflecting both seasonal effects in the registration of overseas nationals and operational factors in recording a NINo on the NIRS computer system. Caution should be taken in interpreting trends based on raw quarterly data, hence a '12 month to date' rolling total is shown above to better reflect trends in the quarterly series.

6. Age and Gender

Fig 3: NINo registrations to Adult Overseas Nationals, by gender and age group – registrations 2008 /2009.



Source: 100% extract from National Insurance Recording System

6.1 - The 25-34 age group is the largest single age group for NINo registrations for men, whereas the biggest group for women is 18-24. 4 in 5 registrations in 2008/09 were made up of 18-34 yr olds.

6.2 - Just over half of NINo registrations to adult overseas nationals are from men. However, by age band, the 18-24 age group is the only group where registrations from women exceed those from men.

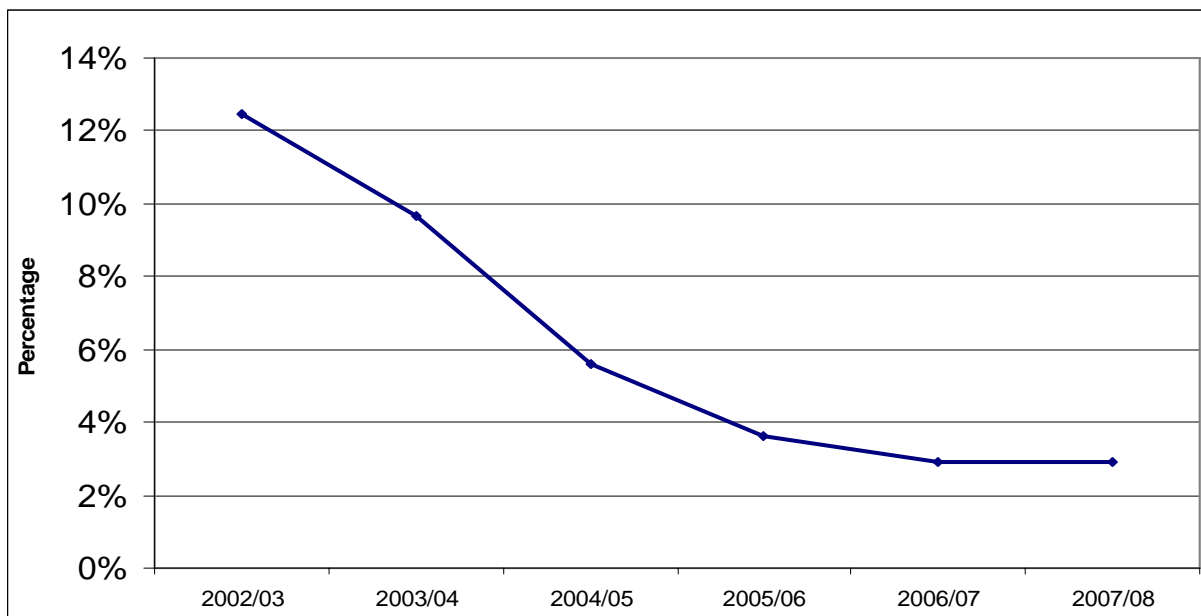
7. Out-of-work benefits.

Merging NINo allocation data with benefits data

7.1 - DWP produces quarterly National Statistics of benefit claimants in the UK. In particular, key out-of-work benefits data (Jobseekers Allowance, Incapacity Benefit, and Income Support) can be merged with National Insurance Recording System data to show adult overseas nationals receiving out-of-work benefits per year.

7.2 - NINo allocation data have been merged with benefits data to show numbers and proportions of overseas nationals claiming benefit within 6 months of registering for a NINo.

Fig 4: Percentage of Adult Overseas Nationals claiming an out-of-work benefit within 6 months of registration, by year of registration.



Source: 100% extract from National Insurance Recording System

Note - The above chart shows the latest figures where benefits data relating to the 6, month reporting periods are available. Data is not shown for the year 2008/09 as for some claimants the 6 month reporting period has yet to elapse.

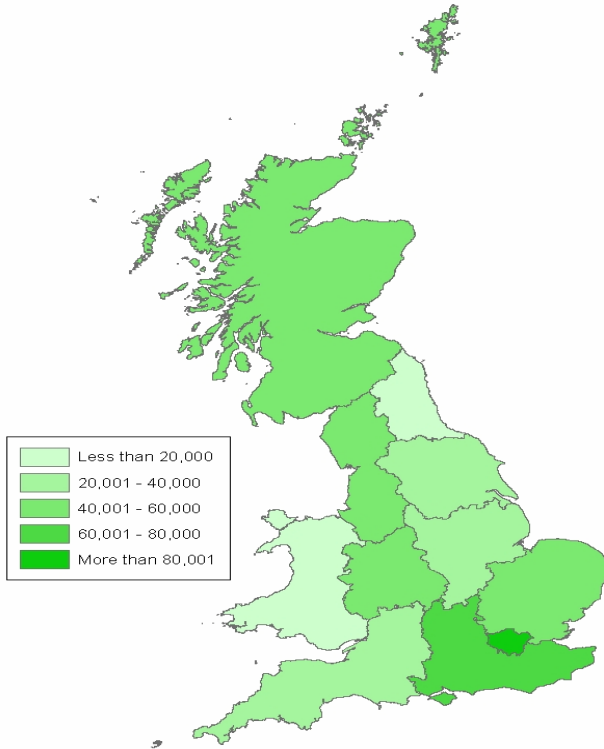
7.3 - Of the 733 thousand registrations in 2007/08, 21 thousand (2.9%) were claiming an out-of-work benefit – JSA, IB or IS – within 6 months of NINo registration. This is down from 12.5% in 2002/03 and is the same rate as at 2006/07

7.4 - Of the 21 thousand registrations in 2007/08 claiming benefit within 6 months of registration, 72% claim JSA, 16% claim IS and 12% claim IB.

8. Area Analysis

8.1 - Registrations are allocated to Government Office Regions, Local Authorities and Parliamentary Constituencies using address matching software and matching to the latest postcode directory. Figures reflect the best estimate of an adult overseas national's locality at the time of registering for a NINo.

Fig 5: NINo registrations to Adult Overseas Nationals, by GOR registrations 2008/09.



8.2 - In 2008/09, of the 686 thousand NINo registrations, 276 thousand (40.2%) of these are from London GOR (Government Office Region), an increase of 3 thousand from the previous year. There were 13 thousand registrations in Northern Ireland, accounting for 1.8% of all UK registrations. The North East has the fewest registrations with 11 thousand, 1.7% of the UK total.

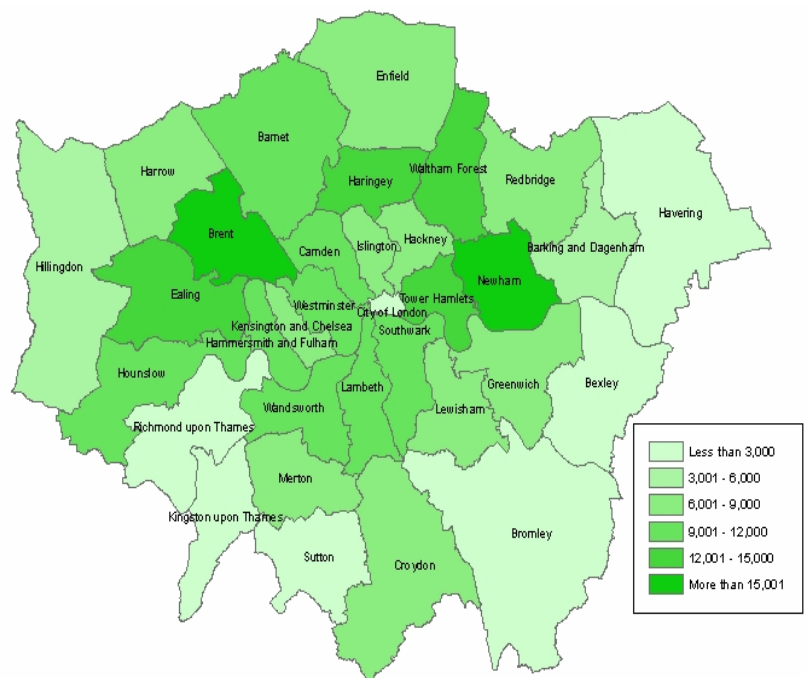
See appendix B for GOR table

8.3 - Of the top 20 Local Authorities (Fig 6) with the highest number of registrations in 2008/09, 16 of these are in London GOR. Birmingham and Edinburgh represent the highest LAs outside of London

Fig 6: NINo registrations to Adult Overseas Nationals, top 20 LAs 2008/09

Local Authority	thousands
Newham	22.31
Brent	18.78
Ealing	14.25
Haringey	13.27
Birmingham	13.11
Tower Hamlets	13.10
Waltham Forest	12.39
Westminster	11.87
Lambeth	11.32
Wandsworth	11.28
Southwark	11.23
Barnet	10.93
Edinburgh, City of	10.83
Hounslow	10.77
Manchester	10.53
Hammersmith and Fulham	9.61
Camden	9.13
Glasgow City	8.56
Hackney	8.54
Islington	7.86

Fig 7: NINo registrations to Adult Overseas Nationals for LA's within London GOR. – 2008/09



9. Appendix A – Sources

9.1 - DWP receive a quarterly cumulative scan from HMRC's National Insurance Recording System (NIRS) which contains details of all adult overseas nationals allocated a NINo. This is used to produce these National Statistics.

9.2 - The figures encompass adult overseas nationals allocated a NINo for whatever reason, i.e. the figures cover benefit/tax credit recipients as well as workers (including self employed). All adult overseas nationals allocated a NINo are included, regardless of their length of stay in the UK.

9.3 - The figures are based on recorded registration date on NIRS, i.e. after the NINo application and allocation process has been completed. This may be a number of weeks or months after arriving in the UK. The registration series is not subject to any future change.

9.4 - The DWP NINo data does not show when overseas nationals subsequently depart the UK, nor show length of stay in the UK. The DWP figures are therefore a measure of inflow of overseas nationals registering for a NINo. It does not measure outflow or overall stock of overseas nationals in the UK.

9.5 - The definition of migrants in this publication – adult overseas nationals allocated a NINo – differs from other published statistics in the area, such as International Migration statistics derived from the International Passenger Survey (IPS), and statistics on foreign workers derived from the Labour Force Survey (LFS). The various definitions of migrants mean the data sources may have different numbers of migrants for the same time period.

Other statistics on migration

9.6 - The Migration Statistics Quarterly Report provides a comprehensive picture of the various sources of migration statistics available and analysis of trends.

<http://www.statistics.gov.uk/statbase/Product.asp?vlnk=15230>

9.7 - In the earlier period the ONS arrival figures are *higher* than the DWP NINo series because they are not restricted to arrivals allocated a NINo. For example, they include non-working students, family members, asylum seekers and other visitors not requiring a NINo. This more than outweighs the fact that the ONS international migration series cover just those migrants staying longer than a year. In more recent years, there has been an influx of short term migrants from A8 countries, which has led to the balance going the other way - Worker Registration Scheme statistics indicate that nearly two thirds of applicants give their intended length of stay as less than a year

9.8 - The DWP NINo data covers people allocated a NINo for all types of work – including the self-employed and students working part-time – and whatever the length of stay in the UK. It also covers overseas nationals allocated a NINo to claim benefits or tax credits. In addition, the data is a 100% sample held at case-level data sources. In particular, the data can be merged with benefits data to show how many entrants claim key benefits following their NINo registration in the UK.

10. Appendix B – Tables

Table 1. NINo registrations to adult overseas nationals entering the UK, by year of registration and world area of origin

	2003/04	2004/05	2005/06	2006/07	2007/08	Thousands 2008/09
All	373.50	435.35	663.06	705.84	733.09	686.11
Europe - EU excluding Accession Countries	85.54	80.71	97.84	102.75	107.47	120.14
Europe - EU Accession Countries	28.72	116.84	276.68	317.50	332.44	257.04
Europe - non-EU	15.87	14.04	15.50	16.14	17.21	16.10
Africa	70.71	64.08	74.03	60.72	59.63	63.31
Asia and Middle East	116.03	109.39	134.40	143.79	149.87	163.04
The Americas	31.41	26.52	31.53	31.50	32.64	36.45
Australasia and Oceania	24.49	23.16	32.51	32.98	33.35	29.53
Others and Unknown	0.72	0.61	0.56	0.46	0.49	0.50

Definitions and conventions: "-" Nil or Negligible; Figures are rounded to the nearest ten and displayed in thousands. Some additional disclosure control has been applied. Totals may not sum due to rounding method used.

NOTE: Registration date is derived from the date at which a NINo is maintained on the National Insurance Recording System.

Source: 100% extract from National Insurance Recording System

Notes:

Time Series - Year Of Registration Date Years are shown as financial year (1 April - 31 March).

World Area of Origin Based on a client's nationality. The mapping for 'world areas' are based on the present day. Bulgaria & Romania are listed as EU Accession States for the entire Back Series. European Union excludes the Accession States.

Table 2. NINo registrations to adult overseas nationals entering the UK, top ten countries by year of registration

						Thousands	
2005/06		2006/07		2007/08		2008/09	
Poland	171.08	Poland	220.43	Poland	210.66	Poland	134.36
India	45.93	India	48.82	India	49.76	India	59.39
Rep of Lithuania	30.94	Slovak Rep	28.60	Slovak Rep	29.99	Slovak Rep	24.09
Slovak Rep	27.51	Pakistan	25.01	Pakistan	24.83	France	24.01
South Africa	24.03	Australia	24.21	Australia	24.10	Romania	23.95
Australia	23.83	Rep of Lithuania	23.92	Romania	22.95	Pakistan	23.46
Pakistan	22.29	France	20.01	France	21.77	Australia	21.39
France	17.23	South Africa	16.80	Rep of Lithuania	19.03	Italy	18.63
Rep of Latvia	14.40	Germany	15.07	Germany	15.53	Rep of Lithuania	17.62
Germany	13.39	China Peoples Rep	13.00	Italy	15.40	Nigeria	17.46

Definitions and conventions: "-" Nil or Negligible; Figures are rounded to the nearest ten and displayed in thousands. Some additional disclosure control has been applied. Totals may not sum due to rounding method used.

NOTE: Registration date is derived from the date at which a NINo is maintained on the National Insurance Recording System.

Source: 100% extract from National Insurance Recording System

Notes:

Time Series - Year Of Registration Date Years are shown as financial year (1 April - 31 March)

Table 3. NINo registrations to adult overseas nationals entering the UK, by quarter of registration and word area of origin

Thousands

	All	Europe - EU excluding Accession Countries	Europe - EU Accession Countries	Europe - non-EU	Africa	Asia and Middle East	The Americas	Australasia and Oceania	Others and Unknown
Jan 04 - Mar 04	115.89	27.33	10.35	5.35	20.53	36.12	9.11	6.85	0.25
Apr 04 - Jun 04	92.86	20.01	11.92	3.76	15.94	28.80	6.59	5.57	0.26
Jul 04 - Sept 04	94.46	17.24	23.58	3.29	14.19	24.84	5.95	5.28	0.09
Oct 04 - Dec 04	109.58	20.30	33.13	3.35	15.60	24.79	6.48	5.83	0.10
Jan 05 - Mar 05	138.46	23.16	48.21	3.65	18.36	30.96	7.49	6.48	0.16
Apr 05 - Jun 05	149.97	23.37	57.56	3.76	18.36	31.16	7.46	8.17	0.12
Jul 05 - Sept 05	171.37	23.45	71.98	3.93	20.65	33.50	8.40	9.33	0.13
Oct 05 - Dec 05	158.76	24.15	66.38	3.78	16.33	33.17	7.67	7.14	0.13
Jan 06 - Mar 06	182.95	26.87	80.77	4.03	18.69	36.56	7.99	7.88	0.17
Apr 06 - Jun 06	133.94	19.77	57.62	3.18	13.50	26.76	6.03	6.91	0.16
Jul 06 - Sept 06	151.49	20.27	70.77	3.20	13.56	28.90	6.83	7.88	0.09
Oct 06 - Dec 06	164.66	25.28	73.36	3.70	12.99	33.46	7.71	8.08	0.09
Jan 07 - Mar 07	255.75	37.43	115.75	6.05	20.66	54.67	10.94	10.12	0.13
Apr 07 - Jun 07	166.13	23.43	75.98	3.98	13.87	33.42	7.37	7.99	0.09
Jul 07 - Sept 07	189.91	24.11	97.27	4.04	14.36	33.29	7.65	9.12	0.08
Oct 07 - Dec 07	185.09	29.44	78.85	4.24	14.80	40.59	8.77	8.27	0.14
Jan 08 - Mar 08	191.96	30.50	80.33	4.95	16.60	42.57	8.84	7.97	0.19
Apr 08 - Jun 08	175.53	27.52	73.16	4.15	15.71	38.23	8.49	8.07	0.21
Jul 08 - Sept 08	167.28	26.38	75.55	3.30	12.99	32.99	8.15	7.83	0.09
Oct 08 - Dec 08	134.80	25.62	42.97	3.27	12.82	36.38	7.92	5.72	0.09
Jan 09 - Mar 09	208.50	40.62	65.34	5.39	21.78	55.44	11.90	7.91	0.12

Definitions and conventions: "-" Nil or Negligible; Figures are rounded to the nearest ten and displayed in thousands. Some additional disclosure control has been applied. Totals may not sum due to rounding method used.

NOTE: Registration date is derived from the date at which a NINo is maintained on the National Insurance Recording System.

Source: 100% extract from National Insurance Recording System

Notes:

Time Series - Quarters are calendar quarters (i.e. 1st Jan to 31st March)

World Area of Origin Based on a client's nationality. The mapping for 'world areas' are based on the present day. Bulgaria & Romania are listed as EU Accession States for the entire Back Series. European Union excludes the Accession States.

Table 4. NINo registrations to adult overseas nationals entering the UK, by gender and age, 2007/08

	Thousands			%	Total	Males	Females
	Total	Males	Females				
All	686.09	360.35	325.77	All		52.5%	47.5%
<18	9.53	5.30	4.23	<18	1.4%	0.8%	0.6%
18-24	265.59	131.83	133.76	18-24	38.7%	19.2%	19.5%
25-34	279.63	150.24	129.40	25-34	40.8%	21.9%	18.9%
35-44	82.93	46.72	36.21	35-44	12.1%	6.8%	5.3%
45-54	37.53	20.45	17.08	45-54	5.5%	3.0%	2.5%
55-59	7.23	3.82	3.42	55-59	1.1%	0.6%	0.5%
60+	3.65	1.99	1.67	60+	0.5%	0.3%	0.2%

Definitions and conventions: "-" Nil or Negligible; Figures are rounded to the nearest ten and displayed in thousands. Some additional disclosure control has been applied. Totals may not sum due to rounding method used.

NOTE: Registration date is derived from the date at which a NINo is maintained on the National Insurance Recording System.

Source: 100% extract from National Insurance Recording System

Notes:

Time Series - Year Of Registration Date Years are shown as financial year (1 April - 31 March).

Table 5. NI No registrations to adult overseas nationals entering the UK from EU Accession Countries, by quarter of registration and nationality

Thousands

	Total	Malta	Rep of Estonia	Rep of Latvia	Rep of Lithuania	Bulgaria	Hungary	Poland	Romania	Cyprus	Rep of Slovenia	Czech Rep	Slovak Rep
Jan 04 - Mar 04	10.35	0.06	0.09	0.29	1.38	2.00	0.36	4.00	1.17	0.09	0.08	0.37	0.47
Apr 04 - Jun 04	11.92	0.08	0.12	0.45	1.72	1.64	0.37	4.97	1.01	0.10	0.21	0.55	0.70
Jul 04 - Sept 04	23.58	0.13	0.34	1.29	3.10	1.08	0.71	11.96	0.68	0.17	0.18	1.54	2.40
Oct 04 - Dec 04	33.13	0.12	0.50	1.67	4.52	1.00	1.12	17.51	0.76	0.22	0.20	2.21	3.28
Jan 05 - Mar 05	48.21	0.14	0.73	2.91	6.21	0.80	1.61	26.68	0.84	0.29	0.22	3.06	4.73
Apr 05 - Jun 05	57.56	0.13	0.75	3.63	7.74	0.89	1.83	32.21	0.70	0.26	0.15	3.17	6.10
Jul 05 - Sept 05	71.98	0.16	0.89	3.76	8.20	0.85	1.99	44.19	0.82	0.23	0.12	3.51	7.27
Oct 05 - Dec 05	66.38	0.17	0.63	3.20	6.95	0.57	2.27	41.66	0.64	0.29	0.09	3.29	6.61
Jan 06 - Mar 06	80.77	0.16	0.76	3.80	8.05	0.52	2.48	53.02	0.72	0.33	0.13	3.28	7.53
Apr 06 - Jun 06	57.62	0.11	0.46	2.58	5.25	0.45	1.87	38.19	0.54	0.21	0.12	2.30	5.53
Jul 06 - Sept 06	70.77	0.13	0.42	2.51	5.44	0.41	2.06	49.70	0.56	0.19	0.10	2.62	6.62
Oct 06 - Dec 06	73.36	0.18	0.52	2.53	5.46	0.56	2.51	51.30	0.61	0.27	0.11	2.76	6.55
Jan 07 - Mar 07	115.75	0.23	0.65	3.41	7.76	1.43	4.30	81.24	2.26	0.39	0.20	3.97	9.91
Apr 07 - Jun 07	75.98	0.12	0.35	2.12	4.84	2.96	2.85	48.05	5.53	0.22	0.10	2.47	6.37
Jul 07 - Sept 07	97.27	0.17	0.35	2.00	5.04	5.05	3.13	63.37	6.27	0.21	0.15	3.14	8.40
Oct 07 - Dec 07	78.85	0.16	0.32	1.79	4.59	2.81	3.59	49.88	5.11	0.33	0.13	2.72	7.41
Jan 08 - Mar 08	80.33	0.14	0.35	1.88	4.55	3.14	3.74	49.37	6.05	0.34	0.16	2.81	7.82
Apr 08 - Jun 08	73.16	0.13	0.36	2.05	4.21	4.42	3.82	40.75	6.73	0.30	0.14	2.53	7.71
Jul 08 - Sept 08	75.55	0.18	0.40	2.09	4.50	5.87	3.90	40.53	6.76	0.25	0.15	3.36	7.57
Oct 08 - Dec 08	42.97	0.14	0.32	1.94	3.24	2.46	3.21	21.67	3.90	0.31	0.10	1.77	3.90
Jan 09 - Mar 09	65.34	0.16	0.61	4.36	5.66	3.24	5.25	31.40	6.56	0.46	0.15	2.56	4.92

Definitions and conventions: "-" Nil or Negligible; Figures are rounded to the nearest ten and displayed in thousands. Some additional disclosure control has been applied. Totals may not sum due to rounding method used.

NOTE: Registration date is derived from the date at which a NI No is maintained on the National Insurance Recording System.

Source: 100% extract from National Insurance Recording System

Notes:

Time Series - Quarters are calendar quarters (i.e. 1st Jan to 31st March)

EU Accession Countries include Romania and Bulgaria which joined the EU on 1st January 2007

Table 6. NINo registrations to adult overseas nationals entering the UK, by year of registration and Government Office Region

Government Office Region	Thousands				
	2004/05	2005/06	2006/07	2007/08	2008/09
All	435.35	663.06	705.84	733.09	686.11
North East	7.36	10.93	13.33	12.23	11.48
North West	31.22	48.81	51.12	51.18	42.94
Yorkshire and the Humber	19.98	36.50	41.33	42.16	37.77
East Midlands	23.56	38.72	40.72	38.45	32.99
West Midlands	28.01	42.04	47.23	46.63	43.90
East of England	34.62	52.78	52.73	51.79	52.21
London	169.71	235.44	240.93	272.71	275.61
South East	51.00	80.24	79.33	82.83	77.87
South West	22.57	34.06	41.23	38.90	33.11
Wales	10.04	16.64	16.72	16.35	14.48
Scotland	23.44	41.40	51.89	52.41	46.26
Northern Ireland	8.11	16.06	19.68	17.64	12.63
Overseas Residents	5.74	9.43	9.58	9.80	4.85

Definitions and conventions: "-" Nil or Negligible; Figures are rounded to the nearest ten and displayed in thousands. Some additional disclosure control has been applied. Totals may not sum due to rounding method used.

NOTE: Registration date is derived from the date at which a NINo is maintained on the National Insurance Recording System

Source: 100% extract from National Insurance Recording System

Notes:

Overseas Residents - Foreign nationals who have registered for a NINo but reside abroad.

Geographical location is assigned by matching postcodes against the relevant postcode directory

Geographical counts are based on individuals recorded address at the time of scan for that reporting period - the individual may have subsequently moved out of the area or back abroad.

Time Series - Year Of Registration Date Years are shown as financial year (1 April - 31 March).

Table 7. NINo registrations to adult overseas nationals entering the UK and claiming an out-of-work benefit within 6 months of registration, by year of registration

	Thousands					
	2002/03	2003/04	2004/05	2005/06	2006/07	2007/08
All	43.14	36.19	24.40	23.94	20.38	21.155
IB / SDA	3.37	3.27	2.71	2.37	2.09	2.57
IS	7.24	7.15	4.49	3.09	2.00	3.31
JSA	32.53	25.77	17.20	18.48	16.29	15.28
% on out-of-work benefits	12.5%	9.7%	5.6%	3.6%	2.9%	2.9%

Definitions and conventions: "-" Nil or Negligible; Figures are rounded to the nearest ten and displayed in thousands. Some additional disclosure control has been applied. Totals may not sum due to rounding method used.

NOTE: Registration date is derived from the date at which a NINo is maintained on the National Insurance Recording System

Notes:

Time Series - Year Of Registration Date Years are shown as financial year (1 April - 31 March).

The above tables show the latest figures where benefits data relating to the 6 month reporting period are available. Registration year 08/09 is not shown as the figures would be subject to change.

Benefits are arranged hierarchically (JSA, IB, IS) and claimants are assigned to the topmost benefit which they receive to avoid double counting