

Castle Street
Improvement **A63**

Public consultation





This leaflet focuses on the detail of our proposals. A representation of these proposals is shown on the following images. The main changes since the preferred route announcement are identified below the images.

Introduction

The Highways Agency is proposing to relieve congestion and provide better access to the Port of Hull by improving the A63 between the St James Street/ Porter Street junctions and the Market Place/Queen Street junctions.

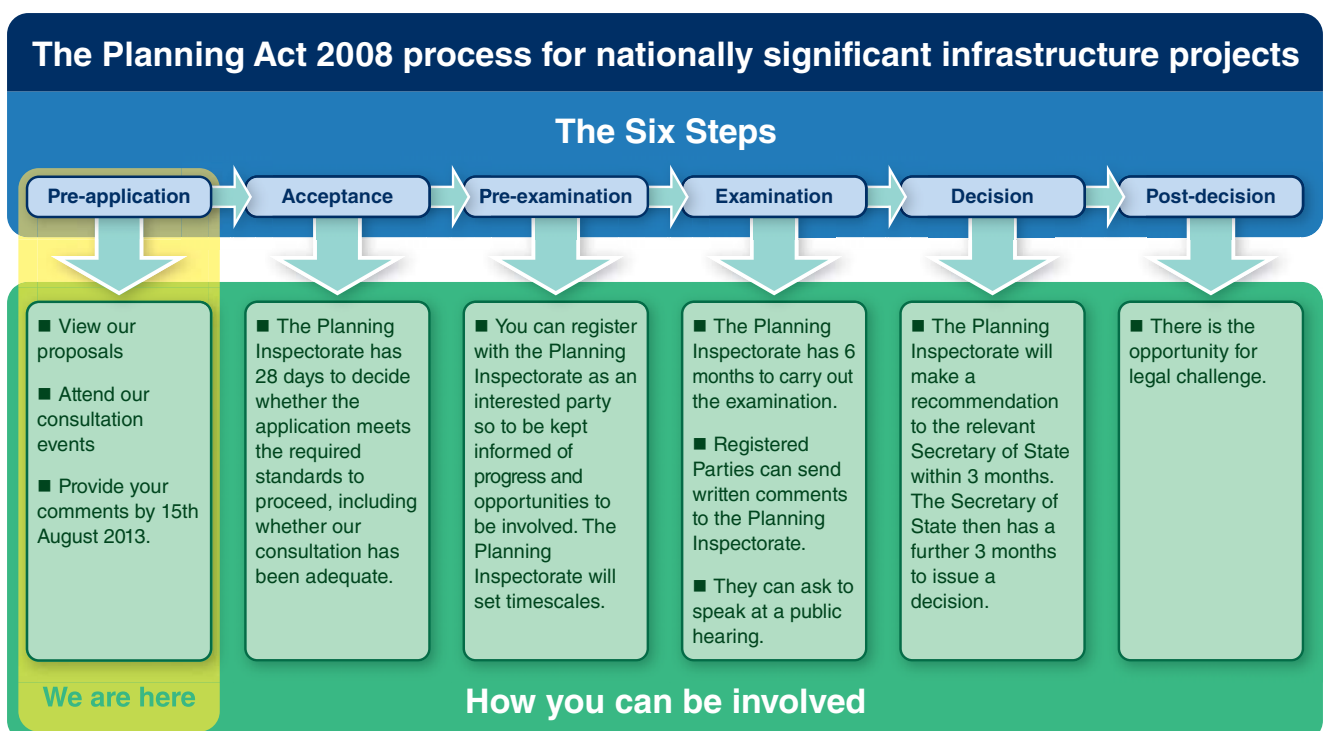
The A63 Castle Street scheme is approximately 0.9 miles long and is a dual carriageway which runs through the centre of Hull. The objectives of the project are to reduce traffic congestion, improve access to the port, improve safety for road users and the local community and to reduce severance between the city centre and the leisure facilities to the south of the A63 Castle Street.

A consultation exercise was held in spring 2009 detailing two preferred and four non preferred options. The consultation found an overall preference for the underground option. This option was subsequently announced as the preferred route in March 2010. Since the preferred route announcement, the design has been developed further. We

are now able to present our proposed road improvements in more detail and are seeking your views on them.

The project is classed as a nationally significant infrastructure project under the Planning Act 2008. As such we are required to make an application for a development consent order to construct the project. We intend to make our application by spring 2014. The application will be made to the Planning Inspectorate who will examine the application and make a recommendation to the Secretary of State for Transport, who will make a decision on whether it should go ahead.

The consultation runs from Friday 28 June 2013 to Thursday 15 August 2013. All responses to this consultation will be considered and will influence where possible, further refinements to the proposals.



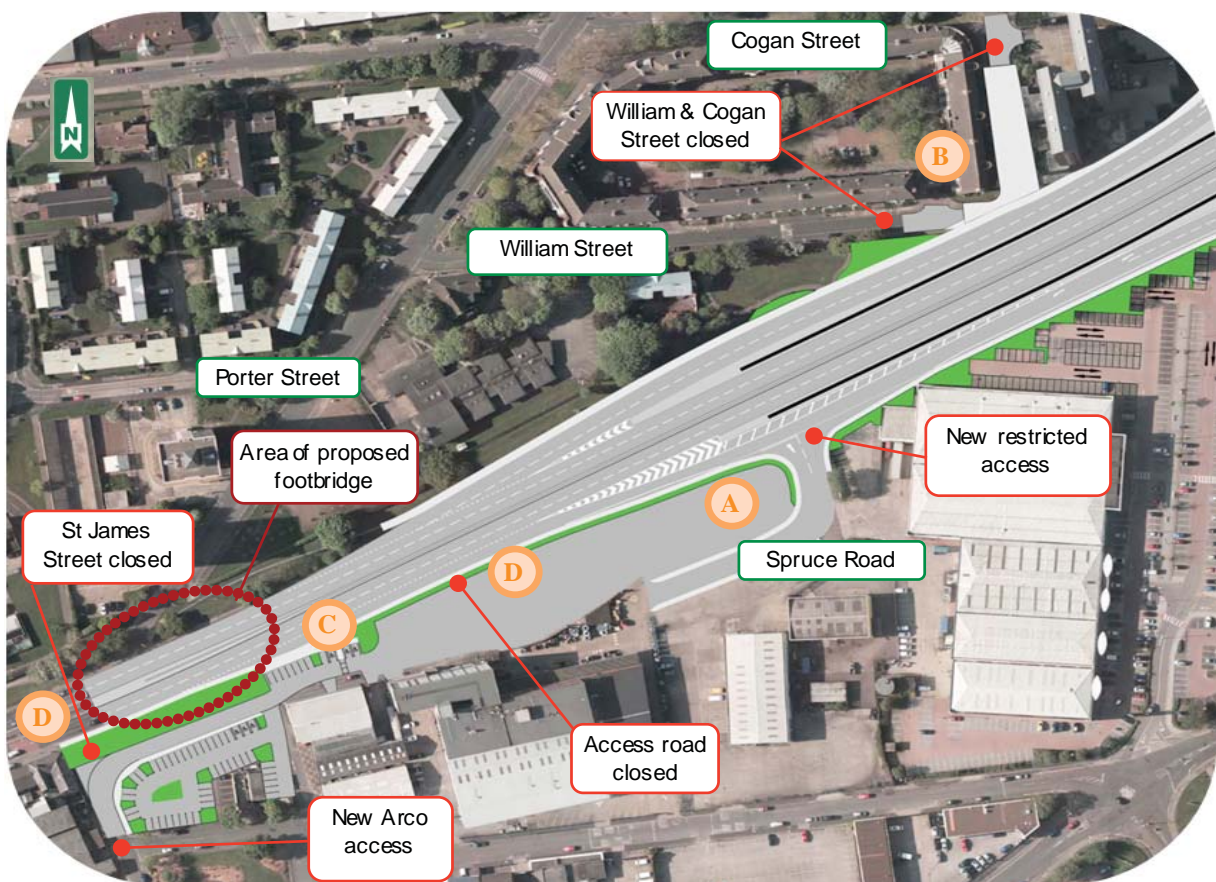


The proposed route

Area 1 - West of Mytongate Junction

We will be:

- Restricting access onto the A63 from side roads by closing junctions.
- Replacing the signal controlled pedestrian crossing with a new footbridge over the A63 near Porter Street.
- Restricting movements on side roads to improve safety



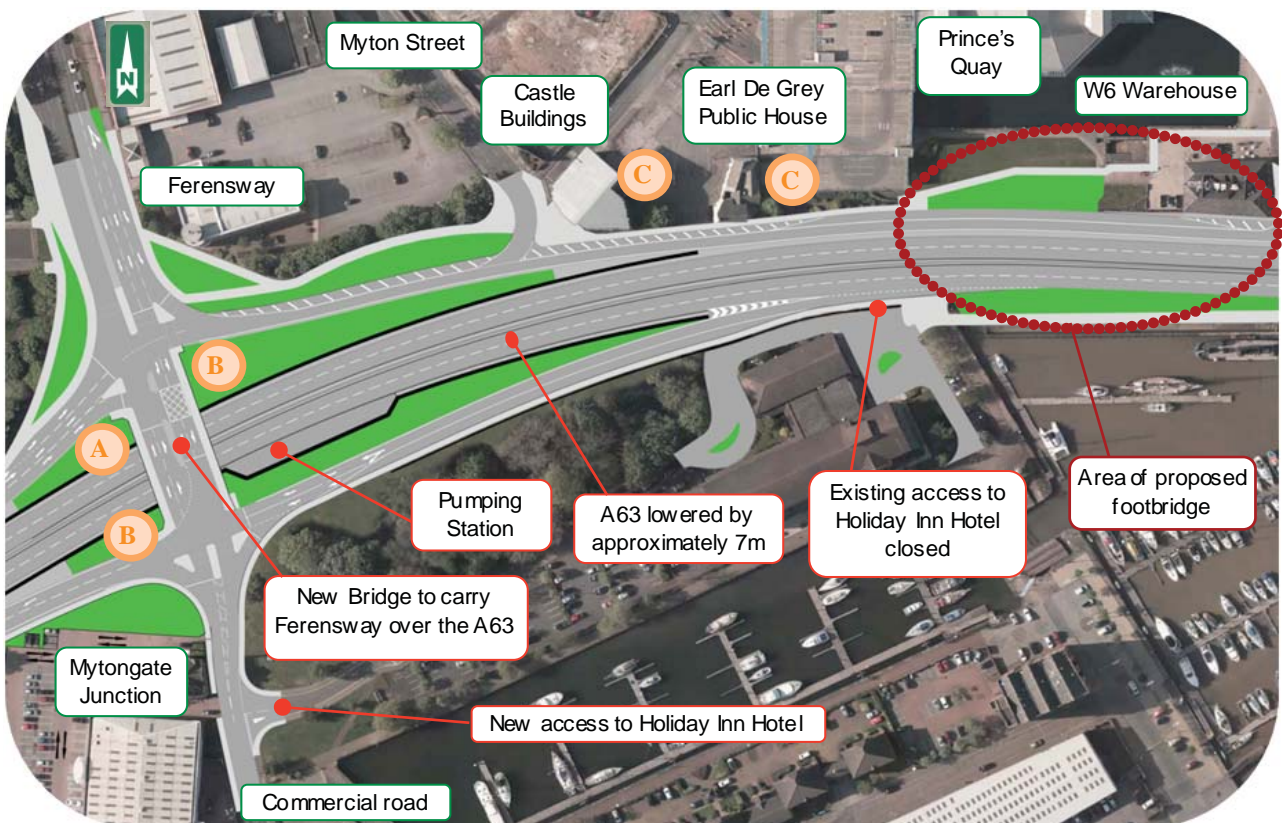
Changes since preferred route announcement

- (A)** Restricted access for local businesses has been provided via Spruce Road to improve local traffic movements.
- (B)** William Street / Cogan Street has been closed to through traffic to improve safety.
- (C)** The slip road onto the A63 has been made longer to help traffic flow.
- (D)** St. James Street and Waverley Street junctions with the A63 have been closed to improve safety.

Area 2 - Mytongate Junction

We will be:

- Providing a split level junction at Mytongate to separate A63 traffic and local traffic.
- Lowering the A63 by approximately 7m and providing a new Mytongate bridge to carry Ferensway over the A63.
- Providing combined pedestrian/cyclist routes across both sides of the new Mytongate bridge
- Replacing the signal controlled pedestrian crossing with a new footbridge over the A63 at Prince's Quay.



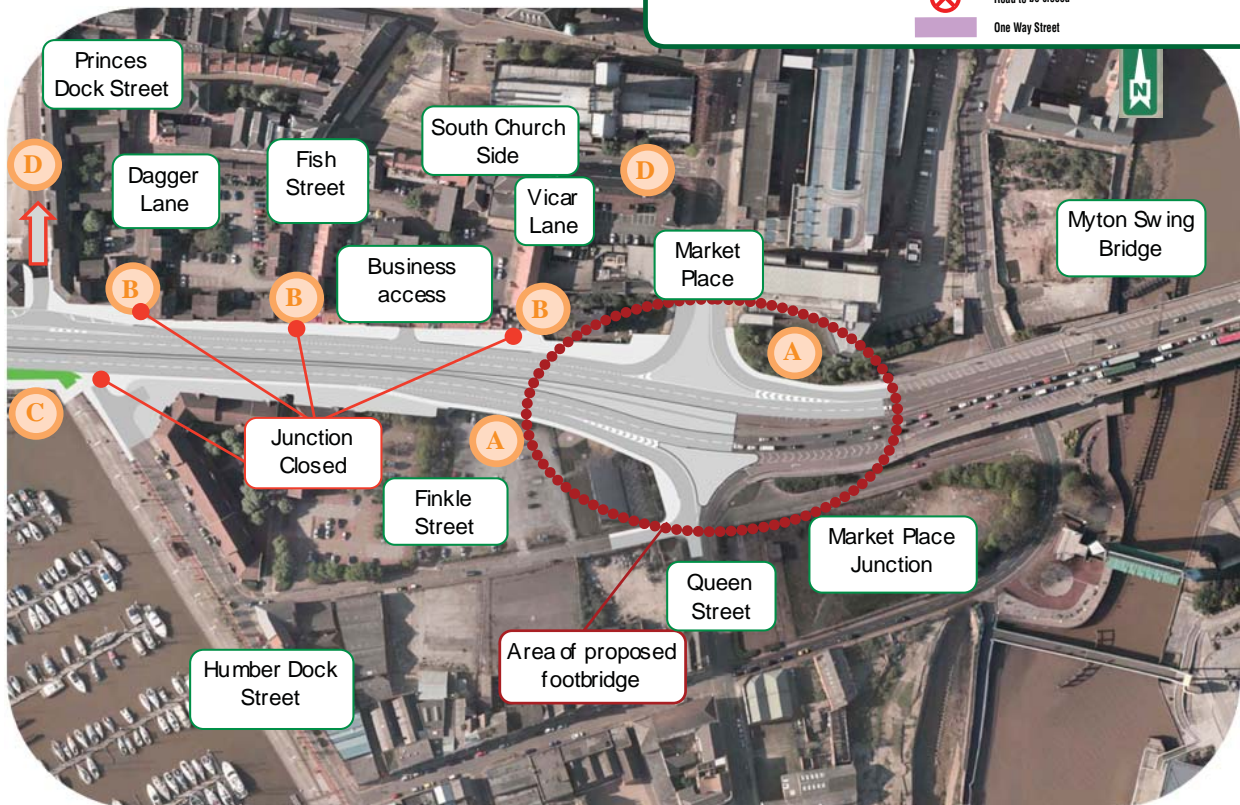
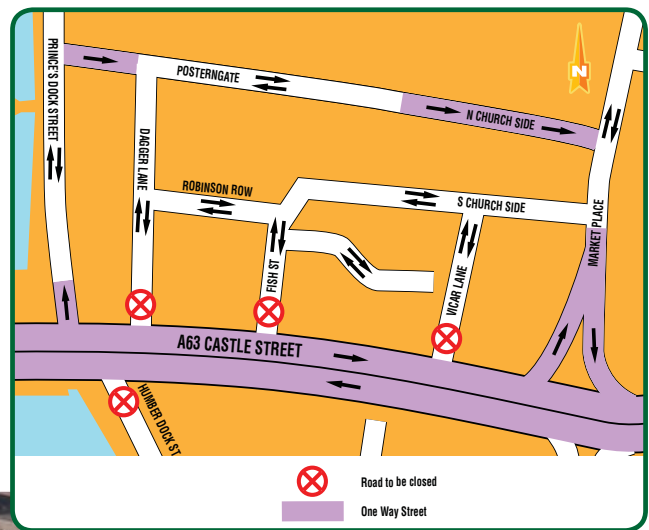
Changes since preferred route announcement

- Ⓐ A 3.0m wide combined cycleway/footway route has been added to the west side of the new Mytongate bridge.
- Ⓑ Two lanes have been provided on all the slip roads and across the new Mytongate bridge to minimise delays during construction.
- Ⓒ Two grade II listed buildings (Castle Buildings and the Earl De Grey public house) are maintained.

Area 3 - East of Mytongate Junction

We will be:

- Providing three lanes for east bound traffic between Princes Dock Street and Market Place junction.
- Restricting access to the A63 from side roads by closing junctions
- Replacing the signal controlled pedestrian crossings with a new footbridge over the A63 at Market Place junction.
- Altering priorities on side roads to improve access



Changes since preferred route announcement

- Ⓐ Market Place/Queen Street junction with the A63 improved to assist merging traffic joining the A63.
- Ⓑ Dagger Lane, Fish Street, Vicar Lane and Humber Dock Street junctions with the A63 closed to improve safety.
- Ⓒ Footways rerouted to suit improved scheme layout and new footbridge locations.
- Ⓓ Change Princes Dock Street access from the A63 to one way and change South Church Side into a two way street.

Environmental considerations

The project is an environmental impact assessment (EIA) development, as defined by the Infrastructure Planning (Environmental Impact Assessment) Regulations 2009. A full environmental statement will be submitted as part of the development consent order application. We will be completing an EIA to further understand the effects of the proposal on the environment. The EIA covers several topics for which we need to understand the environmental situation both with and

without the project. Where there could be a negative effect, we will consider ways to remove or reduce it using mitigation. The results of the EIA will be published in our environmental statement. More information, drawing on assessment work carried out to date, can be found in the EIA scoping report, which contains our preliminary environmental information. A brief summary of the main topics covered in the EIA is provided below:

Air quality	We will consider emissions that may arise from the project during construction and once open. We have started a six-month air quality monitoring programme in the local area.
Cultural heritage	This topic covers archaeological remains, historic buildings and landscapes. We will cover direct impacts as well as how the project affects the settings and landscapes of potentially important assets including the conservation area.
Landscape and visual amenity	We will cover the effects on the local landscape and on the quality of views. We will propose planting and improvements to the urban fabric in appropriate locations in order to mitigate the effects of the project on the landscape and visual amenity.
Ecology and nature conservation	We will consider effects on ecological important sites at the local, regional, national and international level as required by the relevant regulations. We will also consider various species including bats, as well as wintering and breeding birds. We are currently updating our ecological surveys.
Geology and soils	We will consider the disturbance of groundwater and the disturbance of any contaminated land.
Materials	This includes the use of resources and the generation and management of waste.
Noise and vibration	The effects of changes in noise on people can be reported in terms of nuisance. Traffic flow data and the construction methodology will be used to assess the noise and vibration impacts of the project during both construction and operation.
Effects on all travellers	We will consider safety, journey time, congestion and accessibility for everyone along the route.
Community and private assets	We will consider how community facilities would be affected by the project. In addition we will consider the effects on homes, businesses and potential development.
Road drainage and the water environment	We will assess the effects on surface water, ground water and flood risk during both construction and operation of the project.

What happens next?

Following this consultation we will consider your responses as we develop the proposals further. We will then submit our application for a development consent order to construct the project and include a consultation report which will provide a summary of responses and a description of how these have influenced the application. If development consent is granted, we estimate that subject to government funding approval works could commence between 2015 and 2017.



How you can get involved

Consultation event

Friday 19 July 2013, 1pm – 8pm
Saturday 20 July 2013, 10am – 4pm
Saturday 10 August 2013, 12 noon – 8pm

The Royal Hotel
170 Ferensway
Hull
HU1 3UF

We would encourage you to come along to our consultation event to discuss the proposals in more detail with our project team. If you are not able to attend this event, please complete the questionnaire included with this leaflet or online at the address below. Alternatively you can provide your comments to the project team using the contact details overleaf.

When making comments please provide us with your name and address, or, if you would prefer comments to be anonymous, your post code only. It would also help us if you would identify the nature of your interest in the project.

Further consultation materials, including our statement of community consultation, this consultation leaflet, questionnaire, scheme layout plan, the preliminary environmental information in the form of our EIA scoping report and copies of our consultation event boards are available online at

www.highways.gov.uk/a63castlestreet or can be viewed at the locations listed overleaf

Please ensure your comments reach us by Thursday 15 August 2013. The questionnaire can also be handed in at the event.

The consultation materials will be available to view at the following locations:

Location	Viewing times
Hull Central Library , Albion Street, Hull East Riding of Yorkshire, HU1 3FT Tel: 01482 210000	Monday and Wednesday: 09.30 – 18.00 Tuesday and Thursday: 09.30 – 19.00 Friday: 09.30 – 17.30 Saturday: 10.00 – 16.00
Anlaby Park Library , The Greenway, Anlaby High Road, East Riding of Yorkshire HU4 6XH Tel: 01482 614483	Monday and Thursday: 13.30 – 18.00 Tuesday: 09.30 – 12.30 Saturday: 09.30 – 13.00.
Bransholme Library , NorthPoint Shopping Centre Goodhart Road, Bransholme, East Riding of Yorkshire , HU7 4EF Tel: 01482 331234	Monday, Tuesday and Friday: 09.30 – 12.30 and 13.30 – 17.00 Thursday: 09.30 – 12.30 and 13.30 – 18.00 Saturday: 09.30 – 13.30
Ings Library , Savoy Road, Hull East Riding of Yorkshire HU8 0TY Tel: 01482 331250	Monday and Friday: 09.30 – 12.30 and 13.30 – 17.00 Tuesday and Thursday: 13.00 – 18.00 Wednesday: 09.30 – 13.30 Saturday: 09.30 – 13.30
Gipsyville Library , 728-730 Hessle High Road Hull, East Riding of Yorkshire HU4 6JA Tel: 01482 616973	Monday, Wednesday, Thursday and Friday: 09.00 – 17.30 Tuesday: 09.00 – 19.30 Saturday: 10.00 – 13.00 and 14.00 – 16.00
Kingston House , 2nd Floor, Bond Street, Hull East Riding of Yorkshire, HU1 3ER Tel: 01482 300300	Monday – Thursday: 08.30 – 17.00 Friday: 08.30 – 16.30
Highways Agency , Lateral, 8 City Walk Leeds, LS11 9AT Tel: 0113 2836220	Monday to Friday: 09.00– 1700
Please note that viewing locations may be closed on bank holidays.	

Paper or CD copies of the consultation materials can be provided on request. There will be a charge for some documents. Please contact the project team for further details regarding prices and payment methods.

Making your comments

Comments on our proposals can be made by:

- Completing our questionnaire. This is enclosed with this leaflet and available to complete online on the project webpage at: www.highways.gov.uk/a63castlestreet
Alternatively a paper copy can be requested free of charge by contacting the project team.
- Emailing us at A63CastleStreet.Hull@highways.gsi.gov.uk
- Writing to us at: A63 Castle Street Improvement Project Team, Highways Agency, Lateral, 8 City Walk, Leeds, LS11 9AT.

If you have any questions about this consultation please contact the project team using any of the contact details above or by calling **0113 283 6220**



If you need help using this or any other Highways Agency information, please call **0300 123 5000** and we will assist you.

Information provided in response to this consultation, including personal information, may be published or disclosed in accordance with the access to information regimes (these are primarily the Freedom of Information Act 2000 (FOIA), the Data Protection Act 1998 (DPA) and the Environmental Information Regulations 2004).

If you want the information that you provide to be treated as confidential, please be aware that, under the FOIA, there is a statutory Code of Practice with which public authorities must comply and which deals, amongst other things, with obligations of confidence. In view of this it would be helpful if you could explain to us why you regard the information you have provided as confidential. If we receive a request for disclosure of the information we will take full account of your explanation, but we cannot give an assurance that confidentiality can be maintained in all circumstances. An automatic confidentiality disclaimer generated by your IT system will not, of itself, be regarded as binding on the Agency.

The Agency will process your personal data in accordance with the DPA and in the majority of circumstances; this will mean that your personal data will not be disclosed to third parties. Confidential responses will be included in any statistical summary of number of comments and views expressed.

© Crown copyright (2012).

You may re-use this information (not including logos) free of charge in any format or medium, under the terms of the Open Government Licence. To view this licence:

visit <http://www.nationalarchives.gov.uk/doc/open-government-licence/>

write to the Information Policy Team, The National Archives, Kew, London TW9 4DU,
or email psi@nationalarchives.gsi.gov.uk.

This document is also available on our website at www.highways.gov.uk

If you have any enquiries about this publication email

ha_info@highways.gsi.gov.uk or call **0300 123 5000***.

Please quote the Highways Agency publications code **PR49/13**

Highways Agency media services Leeds. Job number N130069

Printed on paper from well-managed forests and other controlled sources

* Calls to 03 numbers cost no more than a national rate call to an 01 or 02 number and must count towards any inclusive minutes in the same way as 01 and 02 calls. These rules apply to calls from any type of line including mobile, BT, other fixed line or payphone. Calls may be recorded or monitored.