

OSR 23/2010

28th September 2010

Coverage: England

Theme: Health and
Social Care

Issued by

Department for Education
Sanctuary Buildings
Great Smith Street
London SW1P 3BT

Telephone:

Press Office
020 7925 6789

Public Enquiries
0870 000 2288

Analyst

Sarah Butt

Email

sarah.butt@education.gsi.
gov.uk

Internet

<http://www.dcsf.gov.uk/rsgateway/DB/STR/index.shtml>

Children Missing from Home or Care. Local Authority self-evaluation scores of measures to monitor, respond to and address runaway cases

England, Oct 2008 to Jun 2010

Introduction

This release provides information on the self-evaluation scores given by each Local Authority on measures to monitor and respond to cases of Children Missing from Home or Care. Further information on how the data have been aggregated can be found in the notes on page 3.

This is **not** a National Statistics publication. The statistics have been released to provide local information on self-assessed progress in respect of monitoring cases of young runaways and responding to their needs. Data are collected quarterly and the figures are published every six months.

In a range from 0 to 3 (low–high), Local Authorities provided a self-evaluation score on each of the following five criteria. The extent to which:

- local information about running away is gathered
- local needs analysis is in place (based on the information gathered)
- local procedures to meet the needs of runaways agreed
- protocols for responding to urgent/out of hours referrals from police or other agencies are in place
- local procedures include effective needs assessment protocols to support effective prevention /intervention work.

A Local Authority overall score is calculated by summing the scores from each of these five criteria, giving a minimum of 0 and a maximum of 15. Average scores for England and for each Government Office Region are found by taking the average of Local Authority scores.

The figures inform the previous Government's National Indicator 71 on Children Missing from Home or Care: Local Authority self-evaluation scores of measures to monitor, respond to and address runaway cases.

Key findings

- there has been a steady improvement in the distribution of scores over time. Chart 1 shows an increase in Local Authorities scoring 11 or more and a decrease in scores of 7 or under. In the most recent quarter, Apr-Jun 2010, only 2% of Local Authorities scored 7 or less while 60% scored 11 or more.

- the average Local Authority self-assessment for Apr-Jun 2010 was 11.1, up from an average of 7.4 for the first self-assessment Oct-Dec 2008 and 8.7 for Apr-Jun 2009 (Table 1).

- improvements have occurred in overall self-assessments in all regions (Chart 2). Since Apr-Jun 2009 the biggest improvements have been in the West Midlands and North East. Self-assessments are lowest in the South West and East of England.

- there have been improvements in all five individual measures over time. However, having effective needs assessment protocols to support effective intervention and prevention work has improved the least and is the lowest scoring measure (Chart 3).

Charts

Chart 1: Distribution of the overall self-evaluation scores for measures to monitor, respond to and address young runaway cases, Oct 2008-Jun 2010, England

This chart gives the proportion of Local Authorities in England recording an overall score from 0 to 15 for their performance regarding young runaways in each quarter Oct 2008-Jun 2010

Chart 2: Overall self-evaluation scores for measures to monitor, respond to and address young runaway cases, Oct 2008-Jun 2010, England, by Government Office Region

This chart gives the average (mean) overall score (0-15) recorded by Local Authorities in England, and across Government Office Regions, for their performance regarding young runaways in each quarter Oct 2008-Jun 2010

Chart 3: Self-evaluation scores for individual measures to monitor, respond to and address young runaway cases, Oct 2008-Jun 2010, England

This chart gives the average (mean) score (0-3) recorded by Local Authorities in England for each of the five individual measures of performance regarding young runaways in each quarter Oct-2008-Jun 2010

Chart 4: Self-evaluation score that measures the extent to which 'local information about running away is gathered', Oct 2008-Jun 2010, England, by Government Office Region

Charts 4 to 8 give the average (mean) score (0-3) recorded by Local Authorities in England, and across Government Office Regions, for each of the five individual measures of performance regarding young runaways in each quarter Oct 2008-Jun 2010.

Chart 5: Self-evaluation score that measures the extent to which 'local needs analysis is in place (based on information gathered)', Oct 2008-Jun 2010, England, by Government Office Region

Chart 6: Self-evaluation score that measures the extent to which 'local procedures to meet the needs of runaways agreed', Oct 2008-Jun 2010, England, by Government Office Region

Chart 7: Self-evaluation score that measures the extent to which 'protocols for responding to urgent/out of hours referrals from police or other agencies are in place', Oct 2008-Jun 2010, England, by Government Office Region

Chart 8: Self-evaluation score that measures the extent to which 'local procedures include effective needs assessment protocols to support effective prevention/intervention work', Oct 2008-Jun 2010, England, by Government Office Region

Tables

Table 1: Self-evaluation scores for measures on each of the five criteria of the indicator in Local Authorities, Oct 2008-Jun 2010, England, by Local Authority and Government Office Region

This table gives the *overall score (0-15) recorded by each Local Authority for their performance regarding young runaways in each quarter Oct 2008-Jun 2010*

Table 2: Self-evaluation scores for measures on each of the five criteria on the indicator in Local Authorities, Apr-Jun 2010, England, by Local Authority and Government Office Region

This table gives the *score (0-3) recorded by each Local Authority for their performance on each of the five individual measures of performance regarding young runaways in the most recent quarter Apr-Jun 2010*

Additional Tables available in Excel version only

These tables give the *score (0-3) recorded by each Local Authority for their performance regarding young runaways in each of the previous quarters Oct 2008 –Mar 2009*

Table 3: Self-evaluation scores for measures on each of the five criteria of the indicator in Local Authorities, Jan-Mar 2010, England, by Local Authority and Government Office Region

Table 4: Self-evaluation scores for measures on each of the five criteria of the indicator in Local Authorities, Oct-Dec 2009, England, by Local Authority and Government Office Region

Table 5: Self-evaluation scores for measures on each of the five criteria of the indicator in Local Authorities, Jul-Sep 2009, England, by Local Authority and Government Office Region

Table 6: Self-evaluation scores for measures on each of the five criteria of the indicator in Local Authorities, Apr-Jun 2009, England, by Local Authority and Government Office Region

Table 7: Self-evaluation scores for measures on each of the five criteria of the indicator in Local Authorities, Jan-Mar 2009, England, by Local Authority and Government Office Region

Table 8: Self-evaluation scores for measures on each of the five criteria of the indicator in Local Authorities, Oct-Dec 2009, England, by Local Authority and Government Office Region

Related Publications

This publication provides data on the self-evaluation scores given by each Local Authority in relation to available measures to monitor and respond to cases of Children Missing from Home or Care. Figures are published every six months.

The February 2010 publication is available in the link below:
<http://www.dcsf.gov.uk/rsgateway/DB/STR/d000912/index.shtml>

Technical notes

Scoring

As stated in the introductory section, Local Authorities were requested to provide a self-evaluation score in five key criteria. The scores which range from 0 to 3 (low–high) have the following application in each of the five criteria:

Local information about running away is gathered

0 - No systematic collection and analysis of data.

1 – Some collection and analysis of data, but generally basic in nature.

2 – Substantial collection and analysis of data, although a few minor gaps exist.

3 – Thorough and systematic collection and analysis of data, which is monitored by appropriate bodies.

Local needs analysis is in place (based on the information gathered)

0 – No analysis in place.

1 – Analysis in place, but not frequently updated.

2 – Analysis in place, and frequently updated, but not reviewed by LSCB.

3 - Analysis in place, frequently updated, and reviewed by LSCB.

Local procedures to meet the needs of runaways agreed

0 – No protocols or multi-agency response in place.

1 – Protocols and procedures under development.

2 – Protocols and procedures in place, alongside risk assessment tool.

3 – Protocols and procedures in place, alongside risk assessment tool which is jointly used by police and children's services.

Protocols for responding to urgent/out of hours referrals from police or other agencies are in place

0 – No protocols in place, and inappropriate provision for out of hour referrals.

1 – Protocols under development, but referrals are made whenever a young person is found or presents themselves out of hours.

2 – Protocols in place, and referrals are made whenever a young person is found or presents themselves out of hours.

3 – Protocols in place, referrals are made whenever a young person is found or presents themselves out of hours, and robust monitoring systems to support this.

Local procedures include effective needs assessment protocols, to support effective prevention/intervention work.

0 – No prevention services in place, and no imminent plans for there to be so.

1 – Prevention services under development, or in the early stages of implementation.

2 – Well established prevention services in place and is well known to those who may wish to use or make referrals to them

3 – Well established, well known prevention services in place and frequently and regularly reviewed

The England level national indicator is found by taking the average of the responding Local Authority overall scores.

Coverage

This publication covers seven quarterly sets of data (1. Oct-Dec 2008; 2. Jan-Mar 2009; 3. Apr-Jun 2009; 4. Jul-Sep 2009; 5. Oct-Dec 2009; 6. Jan-Mar 2010; 7. Apr-Jun 2010). The response numbers for each of the return was 121 Local Authorities in set one; 146 in set two; 152 in set three; 147 in set four; 150 in set five, 142 in set six and 112 out of the 152 Local Authorities in set 7. Since set three (April 2009) the self-evaluation scores were provided by the newly established Local Authorities of Cheshire West and Chester, and Cheshire East as well as Bedford and Central Bedfordshire, which used to be single authorities under the names of Cheshire and Bedfordshire respectively.

Data source and Quality

The publication demonstrates the extent to which Local Authorities consider themselves to be adequately equipped to administer care services for runaway from home cases. In this regard, it is acknowledged that there may be an element of subjectivity or bias to the scores as they are based on self assessment. The criteria and grading were developed in consultation with key stakeholders and trialled on a small group of Local Authorities.

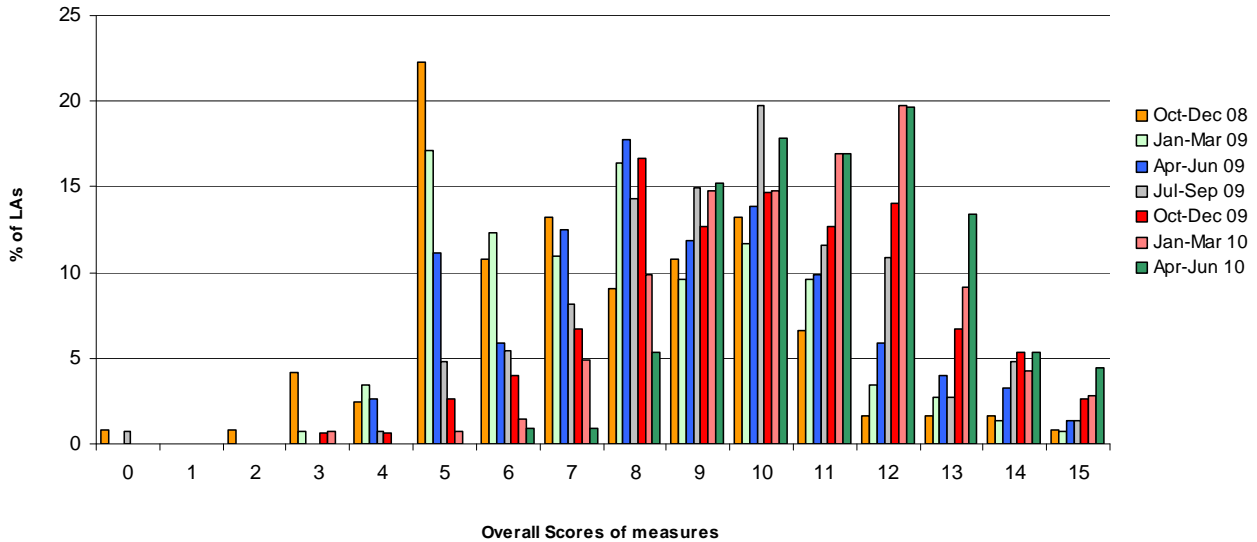
Although the number of Local Authority returns received for Apr-Jun 2010 was lower than for previous quarters (112), comparison of scores from previous quarters suggests that the performance of these Local Authorities is broadly representative of the performance of all Local Authorities.

This measure of Local Authorities performance regarding children missing from home or care is scheduled to run until 2011 only with the last data collection covering Jan-March 2011.

Enquiries

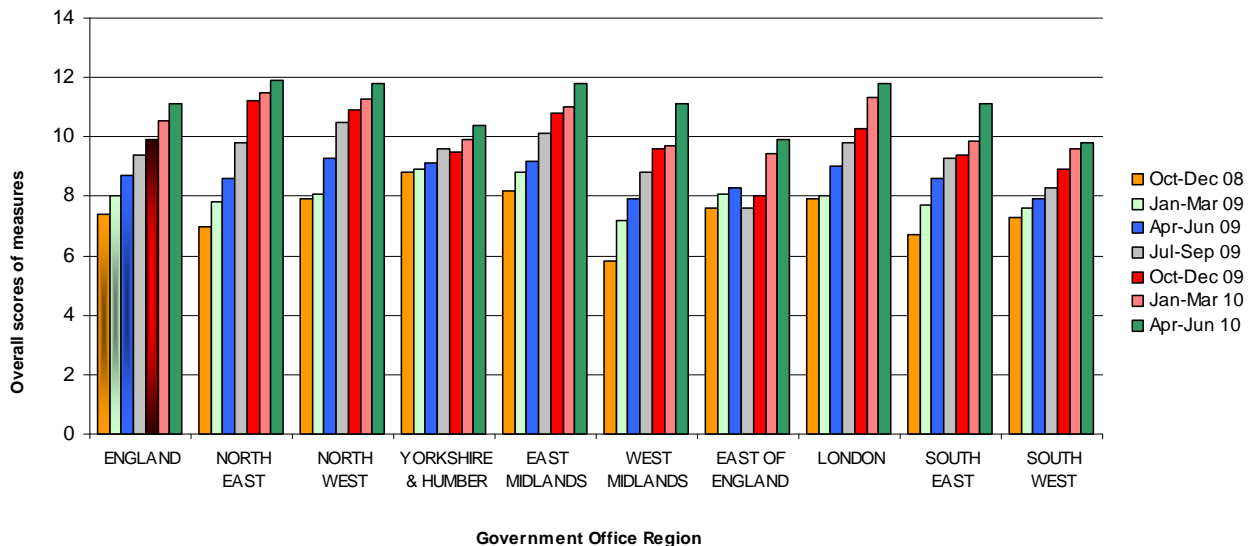
1. Enquiries (non-media) about information contained in this Statistical Release should be addressed to Youth Research Team, 4th Floor Sanctuary Buildings, Great Smith Street, London, SW1P 3BT or email sarah.butt@education.gsi.gov.uk.
2. Media enquiries about information contained in this Statistical Release should be made to the Department's Press Office at DCSF, Sanctuary Buildings, Great Smith Street, London, SW1P 3BT or telephone 020 7925 6789.

**Chart 1: Distribution of the overall self-evaluation scores for measures to monitor, respond to and address young runaway cases
Oct 2008-Jun 2010
Coverage: England**



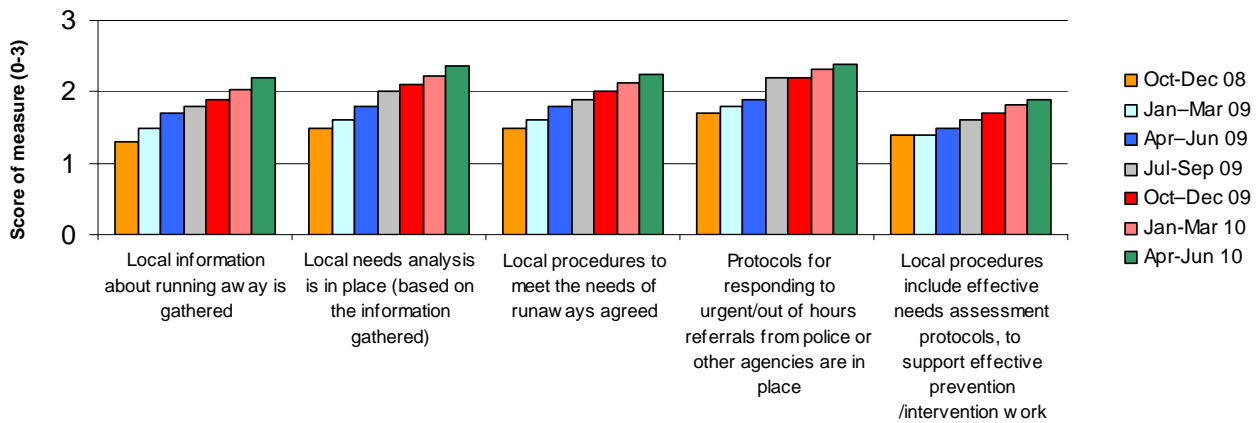
Source: Young runaways self-assessment form

**Chart 2: Overall self-evaluation scores for measures to monitor, respond to and address young runaway cases
Oct 2008-Jun 2010
Coverage: England, by Government Office Region**



Source: Young runaways self-assessment form

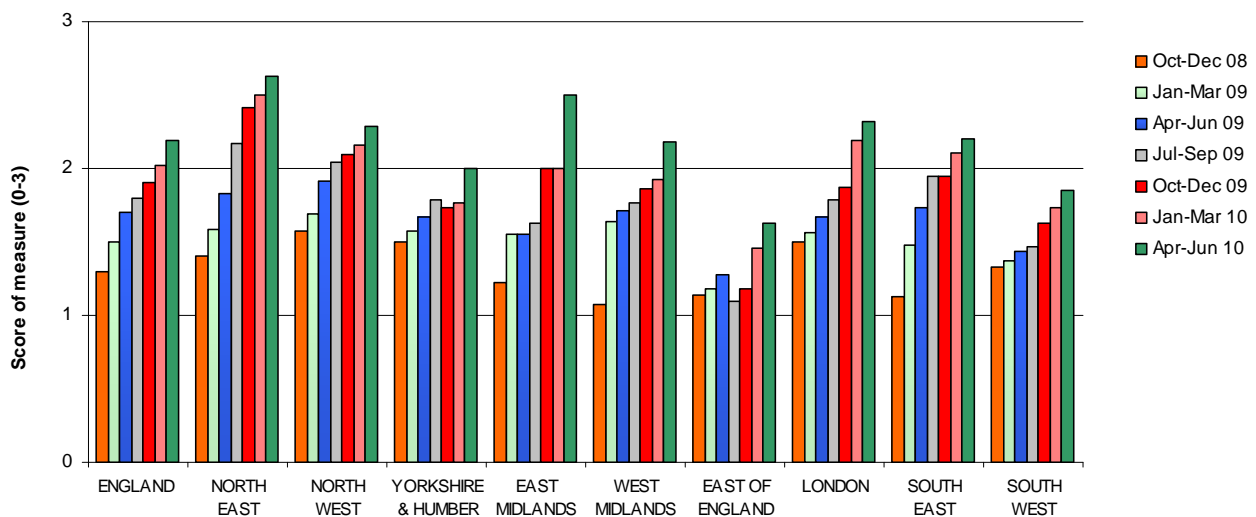
**Chart 3: Self-evaluation scores for individual measures to monitor, respond to and address young runaway cases
Oct 2008-Jun 2010
Coverage: England**



Self-evaluation score; The extent to which...

Source: Young runaways self-assessment form

**Chart 4: Self-evaluation score that measures the extent to which 'local information about running away is gathered'
Oct 2008-Jun 2010
Coverage: England, by Government Office Region**



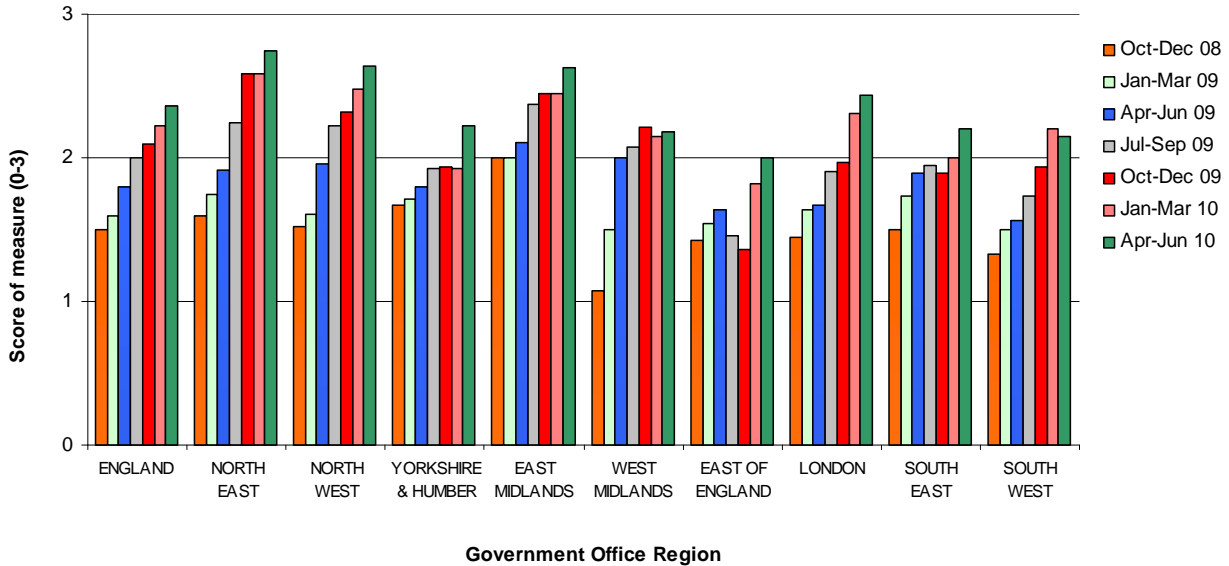
Government Office Region

Source: Young runaways self-assessment form

Chart 5: Self-evaluation score that measures the extent to which 'local needs analysis is in place (based on information gathered)'

Oct 2008-Jun 2010

Coverage: England, by Government Office Region

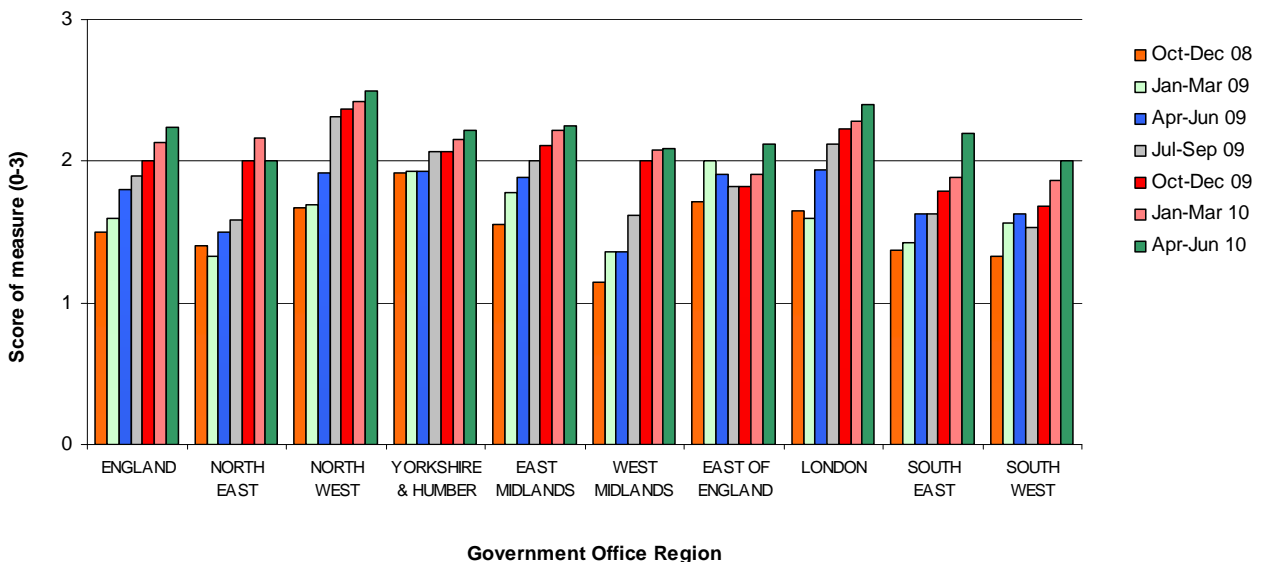


Source: Young runaways self-assessment form

Chart 6: Self-evaluation score that measures the extent to which 'local procedures to meet the needs of runaways agreed'

Oct 2008-Jun 2010

Coverage: England, by Government Office Region

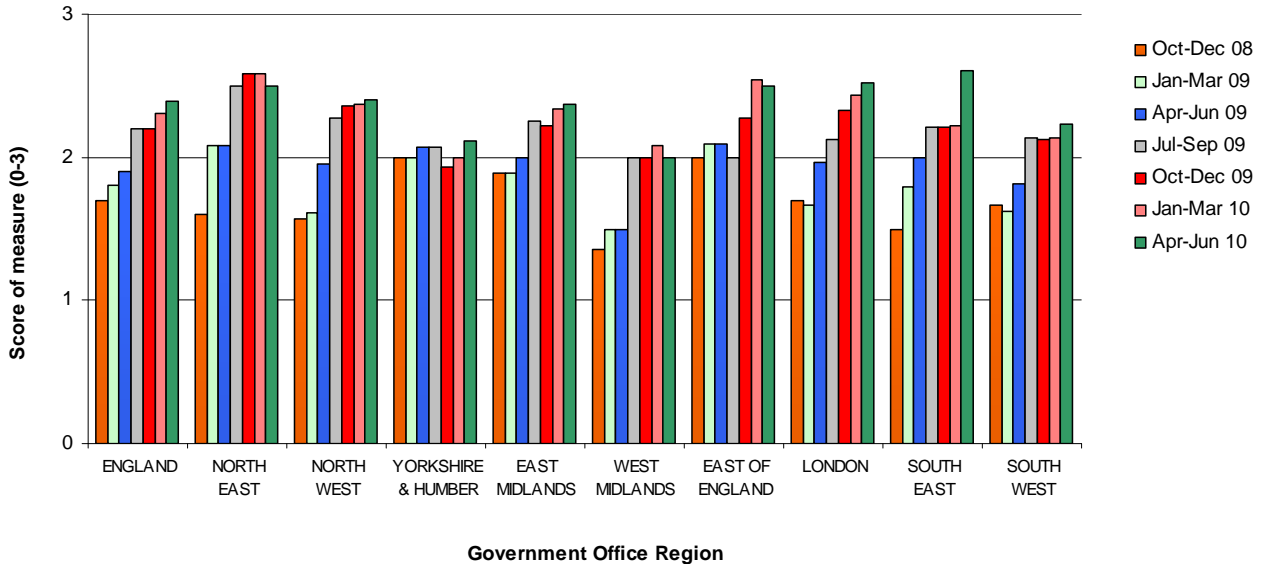


Source: Young runaways self-assessment form

Chart 7: Self-evaluation score that measures the extent to which 'protocols for responding to urgent/out of hours referrals from police or other agencies are in place'

Oct 2008-Jun 2010

Coverage: England, by Government Office Region

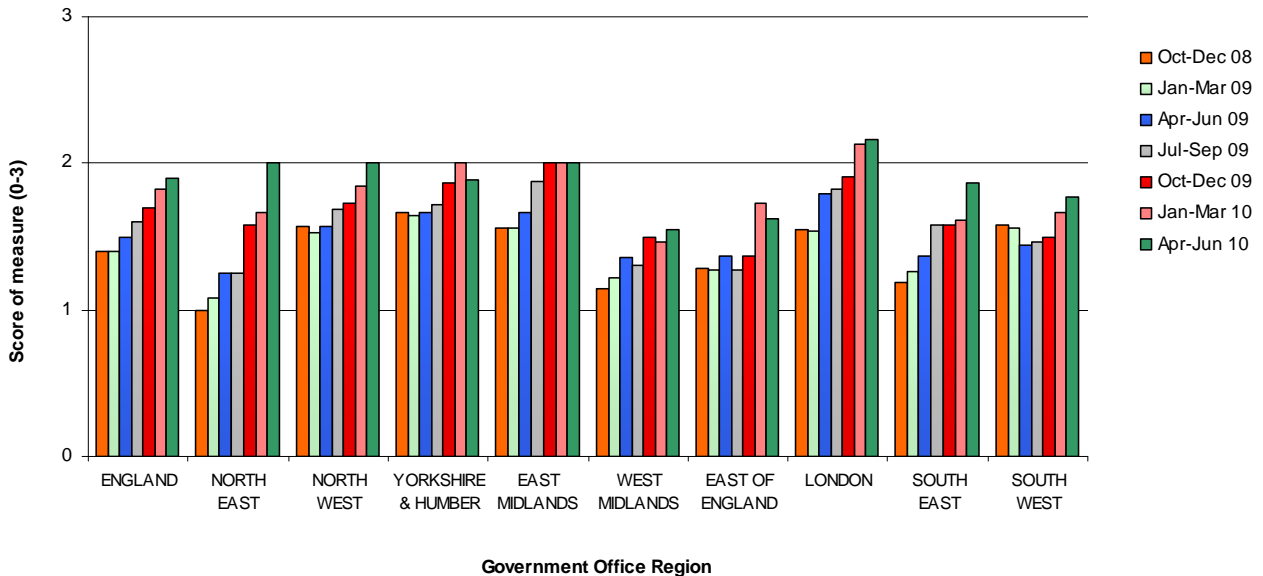


Source: Young runaways self-assessment form

Chart 8: Self-evaluation score that measures the extent to which 'local procedures include effective needs assessment protocols to support effective prevention/intervention work'

Oct 2008-Jun 2010

Coverage: England, by Government Office Region



Source: Young runaways self-assessment form

**Table 1: Self-evaluation scores for measures on each of the five criteria of the indicator in Local Authorities
Oct 2008- Jun 2010
Coverage, England, by Local Authority and Government Office Region**

		Self-evaluation Overall Score						
		Oct-Dec 08	Jan-Mar 09	Apr-Jun 09	Jul-Sep 09	Oct-Dec 09	Jan-Mar 10	Apr-Jun 10
England		7.4	8	8.7	9.4	9.9	10.5	11.1
NORTH EAST		7	7.8	8.6	9.8	11.2	11.5	11.9
841	Darlington	7	7	7	7	7	7	-
840	Durham	7	7	8	9	9	10	10
390	Gateshead	8	9	10	10	12	12	12
805	Hartlepool	3	5	5	10	13	13	-
806	Middlesbrough	11	11	13	13	13	13	13
391	Newcastle upon Tyne	8	8	10	12	14	14	13
392	North Tyneside	11	11	12	12	12	12	12
929	Northumberland	5	6	6	9	11	12	12
807	Redcar and Cleveland	-	11	11	11	11	11	-
393	South Tyneside	5	8	9	11	11	11	11
808	Stockton-on-Tees	-	4	4	4	9	11	-
394	Sunderland	5	7	8	9	12	12	12
NORTH WEST¹		7.9	8.1	9.3	10.5	10.9	11.3	11.8
889	Blackburn with Darwen	7	7	8	11	12	12	12
890	Blackpool	10	11	11	12	12	12	-
350	Bolton	5	5	7	10	10	-	13
351	Bury	5	7	9	12	12	12	12
896	Cheshire West and Chester ²	8	8	8	9	9	-	-
895	Cheshire East ²	8	8	8	9	9	10	10
909	Cumbria	7	7	8	9	10	10	10
876	Halton	13	13	14	14	14	14	14
340	Knowsley ¹	6	8	8	9	10	10	12
888	Lancashire	7	8	9	11	12	12	-
341	Liverpool	10	8	8	10	13	13	13
352	Manchester	10	10	10	9	9	9	9
353	Oldham	8	8	8	10	12	12	12
354	Rochdale	10	10	10	10	11	11	11
355	Salford	8	8	10	10	10	11	-
343	Sefton	5	5	5	-	8	8	-
342	St. Helens ¹	8	8	12	12	12	12	-
356	Stockport	9	9	9	11	11	-	-
357	Tameside	5	7	8	9	10	-	-
358	Trafford	-	6	8	9	9	9	9
877	Warrington	7	8	13	10	10	11	11
359	Wigan	6	6	9	12	12	12	14
344	Wirral	12	12	14	14	14	14	15

Table 1: Self-evaluation scores for measures on each of the five criteria of the indicator in Local Authorities (cont)
Oct 2008- Jun 2010
Coverage, England, by Local Authority and Government Office Region

		Self-evaluation Overall Score						
		Oct-Dec 08	Jan-Mar 09	Apr-Jun 09	Jul-Sep 09	Oct-Dec 09	Jan-Mar 10	Apr-Jun 10
YORKSHIRE & HUMBER		8.8	8.9	9.1	9.6	9.5	9.9	10.4
370	Barnsley	10	10	10	13	13	13	-
380	Bradford	-	-	8	8	8	9	9
381	Calderdale	-	4	4	5	5	8	-
371	Doncaster	-	9	12	12	3	3	8
811	East Riding of Yorkshire	6	6	6	8	11	12	12
810	Kingston Upon Hull, City of	11	11	11	11	11	-	11
382	Kirklees	13	13	13	-	13	13	-
383	Leeds	5	5	5	5	6	10	10
812	North East Lincolnshire	11	11	11	12	13	13	13
813	North Lincolnshire	6	12	13	13	14	-	-
815	North Yorkshire	5	5	5	7	7	7	8
372	Rotherham	14	14	14	14	11	11	-
373	Sheffield	9	9	10	10	10	11	11
384	Wakefield	11	11	11	11	12	12	12
816	York	4	4	4	5	6	7	-
EAST MIDLANDS		8.2	8.8	9.2	10.1	10.8	11.0	11.8
831	Derby	9	9	10	11	12	13	13
830	Derbyshire	11	11	12	14	15	15	15
856	Leicester	15	15	15	15	15	11	11
855	Leicestershire	7	8	8	10	12	12	-
925	Lincolnshire	5	6	8	10	10	10	12
928	Northamptonshire	6	7	7	7	8	10	11
892	Nottingham	6	7	7	8	8	9	10
891	Nottinghamshire	5	6	6	6	7	8	11
857	Rutland	10	10	10	-	10	11	11
WEST MIDLANDS		5.8	7.2	7.9	8.8	9.6	9.7	10.0
330	Birmingham	9	11	11	-	13	-	12
331	Coventry	7	8	7	9	9	9	9
332	Dudley	5	5	5	6	6	6	-
884	Herefordshire	0	3	5	7	8	9	9
333	Sandwell	7	7	7	7	7	7	6
893	Shropshire	5	6	7	9	11	12	12
334	Solihull	3	7	8	9	5	6	10
860	Staffordshire	10	11	11	9	10	12	12
861	Stoke-on-Trent	10	10	13	14	15	15	-
894	Telford and Wrekin	5	5	5	8	8	9	9
335	Walsall	7	10	11	12	12	11	11
937	Warwickshire	5	5	7	8	9	9	9
336	Wolverhampton	3	8	9	6	11	11	11
885	Worcestershire	5	5	5	10	10	10	-

Table 1: Self-evaluation scores for measures on each of the five criteria of the indicator in Local Authorities (cont)
Oct 2008- Jun 2010
Coverage, England, by Local Authority and Government Office Region

		Self-evaluation Overall Score						
		Oct-Dec 08	Jan-Mar 09	Apr-Jun 09	Jul-Sep 09	Oct-Dec 09	Jan-Mar 10	Apr-Jun 10
EAST OF ENGLAND		7.6	8.1	8.3	7.6	8.0	9.5	9.9
822	Bedford ²	9	9	8	8	8	10	10
823	Central Bedfordshire ²	9	9	9	9	9	9	9
873	Cambridgeshire	3	4	4	6	7	7	8
881	Essex	9	9	9	9	9	11	-
919	Hertfordshire	-	5	5	6	6	9	10
821	Luton	8	10	10	10	11	11	-
926	Norfolk	6	11	11	8	6	8	-
874	Peterborough	-	7	7	0	4	9	10
882	Southend-on-Sea	8	10	10	10	10	12	14
935	Suffolk	10	10	10	10	10	10	10
883	Thurrock	-	5	8	8	8	8	8
LONDON		7.9	8.0	9.0	9.8	10.3	11.3	11.8
201	City of London	-	-	15	15	-	15	15
202	Camden	14	14	14	14	14	14	14
204	Hackney	-	-	9	9	9	13	13
205	Hammersmith and Fulham	6	6	9	10	11	11	11
309	Haringey	-	5	10	10	10	11	11
206	Islington	9	10	10	11	13	13	13
207	Kensington and Chelsea	8	8	11	11	8	8	10
208	Lambeth	11	11	11	11	11	11	11
209	Lewisham	5	8	9	10	11	12	13
316	Newham	-	5	7	8	8	-	-
210	Southwark	4	7	7	8	10	10	-
211	Tower Hamlets	6	6	7	8	9	9	9
212	Wandsworth	-	5	6	8	10	11	11
213	Westminster	9	9	11	11	11	11	11
301	Barking and Dagenham	2	4	7	9	-	11	12
302	Barnet	8	8	8	9	10	10	10
303	Bexley	-	6	7	10	11	13	13
304	Brent	-	6	6	7	7	12	12
305	Bromley	7	13	8	8	8	10	12
306	Croydon	11	11	11	11	12	9	9
307	Ealing	10	10	10	10	12	12	12
308	Enfield	5	5	8	12	15	15	15
203	Greenwich	-	7	7	7	7	9	10
310	Harrow	-	8	8	8	8	11	-
311	Havering ²	9	9	12	12	12	12	-
312	Hillingdon	10	10	11	11	13	13	-
313	Hounslow	-	5	5	7	8	9	9
314	Kingston upon Thames	9	10	10	12	12	12	-
315	Merton	-	12	12	12	12	12	13
317	Redbridge	5	5	8	9	9	12	14
318	Richmond upon Thames	9	9	11	11	11	13	13
319	Sutton	-	8	8	8	9	10	-
320	Waltham Forest	-	-	5	5	8	8	-

**Table 1: Self-evaluation scores for measures on each of the five criteria of the indicator in Local Authorities (cont)
Oct 2008 – Jun 2010
Coverage, England, by Local Authority and Government Office Region**

		Self-evaluation Overall Score						
		Oct-Dec 08	Jan-Mar 09	Apr-Jun 09	Jul-Sep 09	Oct-Dec 09	Jan-Mar 10	Apr-Jun 10
SOUTH EAST		6.7	7.7	8.6	9.3	9.4	9.8	11.1
867	Bracknell Forest	5	6	10	10	10	10	13
846	Brighton and Hove	6	8	8	8	8	10	10
825	Buckinghamshire	9	10	10	8	8	8	8
845	East Sussex	7	9	9	12	14	14	15
850	Hampshire	5	5	6	8	9	9	-
921	Isle of Wight	-	13	13	13	14	14	14
886	Kent	3	5	5	9	9	12	12
887	Medway	7	9	9	10	8	8	9
826	Milton Keynes	4	6	9	10	10	10	10
931	Oxfordshire	12	12	14	14	14	13	-
851	Portsmouth	-	5	5	7	7	-	-
870	Reading	5	5	7	5	8	9	9
871	Slough	5	8	12	12	12	12	13
852	Southampton	6	8	8	8	8	8	-
936	Surrey	6	6	6	5	5	5	10
869	West Berkshire	10	10	10	10	9	9	10
938	West Sussex	7	6	7	8	8	8	9
868	Windsor and Maidenhead	10	10	10	10	10	10	12
872	Wokingham	-	5	6	10	8	8	12
SOUTH WEST		7.3	7.6	7.9	8.3	8.9	9.6	10.0
800	Bath and North East Somerset	5	8	9	10	9	10	10
837	Bournemouth	-	6	7	7	7	9	10
801	Bristol, City of	7	7	7	7	8	8	9
908	Cornwall	10	9	9	6	8	9	9
878	Devon	-	7	9	-	8	-	-
835	Dorset	6	6	6	6	9	9	9
916	Gloucestershire	10	12	12	11	11	11	11
420	Isles of Scilly	-	5	5	5	5	8	8
802	North Somerset	9	11	12	12	13	12	13
879	Plymouth	-	9	9	11	12	11	-
836	Poole	5	5	5	7	7	7	7
933	Somerset	8	8	8	10	11	11	11
803	South Gloucestershire	5	5	5	9	10	10	11
866	Swindon	7	6	5	6	6	7	-
880	Torbay	10	8	8	8	8	12	12
865	Wiltshire	5	10	10	10	10	10	10

Source: Young runaways self-assessment tool

¹ The score for Oct-Dec 09 has changed from previous publication (Feb 10) as updated information for Knowsley and St Helens Local Authorities has become available.

² Up to March 2009 the Local Authorities of Cheshire West and Chester and Cheshire East used to be a single Local Authority under the name of Cheshire. Similarly Bedford and Central Bedfordshire used to be a single Local Authority under the name of Bedfordshire. Both Local Authorities have been given the single authority score for October 2008 to March 2009.

³ Some local authorities did not provide information on the indicator. These cases are denoted by - .

⁴ See Technical Notes as to how the 'self-evaluation overall score' has been calculated.

**Table 2: Self-evaluation scores for measures on each of the five criteria on the indicator in Local Authorities
Apr-Jun 2010
Coverage: England, by Local Authority and Government Office Region**

Self-evaluation Score; The extent to which...					
	Local information about running away is gathered	Local needs analysis is in place (based on the information gathered)	Local procedures to meet the needs of runaways agreed	Protocols for responding to urgent/out of hours referrals from police or other agencies are in place	Local procedures include effective needs assessment protocols, to support effective prevention /intervention work
England	2.2	2.4	2.2	2.4	1.9
NORTH EAST	2.6	2.8	2.0	2.5	2.0
841 Darlington	-	-	-	-	-
840 Durham	2	2	1	2	3
390 Gateshead	2	3	2	3	2
805 Hartlepool	-	-	-	-	-
806 Middlesbrough	2	3	3	3	2
391 Newcastle upon Tyne	3	3	1	3	3
392 North Tyneside	3	3	3	2	1
929 Northumberland	3	3	2	2	2
807 Redcar and Cleveland	-	-	-	-	-
393 South Tyneside	3	2	2	3	1
808 Stockton-on-Tees	-	-	-	-	-
394 Sunderland	3	3	2	2	2
NORTH WEST	2.3	2.6	2.5	2.4	2.0
889 Blackburn with Darwen	2	2	2	3	3
890 Blackpool	-	-	-	-	-
350 Bolton	3	3	3	2	2
351 Bury	2	3	3	2	2
896 Cheshire West and Chester	2	3	2	2	1
895 Cheshire East	-	-	-	-	-
909 Cumbria	2	2	2	3	1
876 Halton	3	3	3	3	2
340 Knowsley	3	3	3	2	1
888 Lancashire	-	-	-	-	-
341 Liverpool	2	3	2	3	3
352 Manchester	1	1	3	2	2
353 Oldham	2	2	3	3	2
354 Rochdale	2	3	2	2	2
355 Salford	-	-	-	-	-
343 Sefton	-	-	-	-	-
342 St. Helens	-	-	-	-	-
356 Stockport	-	-	-	-	-
357 Tameside	-	-	-	-	-
358 Trafford	2	2	2	1	2
877 Warrington	2	3	2	2	2
359 Wigan	3	3	3	3	2
344 Wirral	3	3	3	3	3

Table 2: Self-evaluation scores for measures on each of the five criteria on the indicator in Local Authorities (cont)
Apr-Jun 2010
Coverage: England, by Local Authority and Government Office Region

		Self-evaluation Score; The extent to which...				
		Local information about running away is gathered	Local needs analysis is in place (based on the information gathered)	Local procedures to meet the needs of runaways agreed	Protocols for responding to urgent/out of hours referrals from police or other agencies are in place	Local procedures include effective needs assessment protocols, to support effective prevention /intervention work
YORKSHIRE & HUMBER		2.0	2.2	2.2	2.1	1.9
370	Barnsley	-	-	-	-	-
380	Bradford	1	2	2	2	2
381	Calderdale	-	-	-	-	-
371	Doncaster	1	2	2	2	1
811	East Riding of Yorkshire	2	2	3	2	3
810	Kingston Upon Hull, City of	2	3	1	2	3
382	Kirklees	-	-	-	-	-
383	Leeds	2	2	2	2	2
812	North East Lincolnshire	3	3	3	3	1
813	North Lincolnshire	-	-	-	-	-
815	North Yorkshire	2	1	2	2	1
372	Rotherham	-	-	-	-	-
373	Sheffield	2	2	2	2	3
384	Wakefield	3	3	3	2	1
816	York	-	-	-	-	-
EAST MIDLANDS		2.5	2.6	2.3	2.4	2.0
831	Derby	2	3	2	3	3
830	Derbyshire	3	3	3	3	3
856	Leicester	2	2	3	2	2
855	Leicestershire	-	-	-	-	-
925	Lincolnshire	2	3	2	3	2
928	Northamptonshire	3	2	2	2	2
892	Nottingham	3	3	1	1	2
891	Nottinghamshire	3	3	2	2	1
857	Rutland	2	2	3	3	1
WEST MIDLANDS		2.2	2.2	2.1	2.0	1.5
330	Birmingham	3	2	2	2	3
331	Coventry	1	2	2	2	2
332	Dudley	-	-	-	-	-
884	Herefordshire	1	3	2	2	1
333	Sandwell	1	1	1	2	1
893	Shropshire	3	3	2	2	2
334	Solihull	2	2	3	1	2
860	Staffordshire	3	2	3	3	1
861	Stoke-on-Trent	-	-	-	-	-
894	Telford and Wrekin	2	2	2	2	1
335	Walsall	3	2	2	2	2
937	Warwickshire	2	2	2	2	1
336	Wolverhampton	3	3	2	2	1
885	Worcestershire	-	-	-	-	-

Table 2: Self-evaluation scores for measures on each of the five criteria on the indicator in Local Authorities (cont)
Apr-Jun 2010
Coverage: England, by Local Authority and Government Office Region

		Self-evaluation Score; The extent to which...				
		Local information about running away is gathered	Local needs analysis is in place (based on the information gathered)	Local procedures to meet the needs of runaways agreed	Protocols for responding to urgent/out of hours referrals from police or other agencies are in place	Local procedures include effective needs assessment protocols, to support effective prevention /intervention work
EAST OF ENGLAND		1.6	2.0	2.1	2.5	1.6
822	Bedford	1	3	2	2	2
823	Central Bedfordshire	1	1	3	2	2
873	Cambridgeshire	1	1	2	2	2
881	Essex	-	-	-	-	-
919	Hertfordshire	2	2	2	3	1
821	Luton	-	-	-	-	-
926	Norfolk	-	-	-	-	-
874	Peterborough	3	2	1	3	1
882	Southend-on-Sea	2	3	3	3	3
935	Suffolk	2	3	2	2	1
883	Thurrock	1	1	2	3	1
LONDON		2.3	2.4	2.4	2.5	2.2
201	City of London	3	3	3	3	3
202	Camden	3	2	3	3	3
204	Hackney	2	3	3	2	3
205	Hammersmith and Fulham	2	3	2	2	2
309	Haringey	2	3	2	2	2
206	Islington	2	3	2	3	3
207	Kensington and Chelsea	2	1	3	2	2
208	Lambeth	2	2	2	3	2
209	Lewisham	3	2	2	3	3
316	Newham	-	-	-	-	-
210	Southwark	-	-	-	-	-
211	Tower Hamlets	2	1	2	3	1
212	Wandsworth	2	2	3	2	2
213	Westminster	2	2	3	2	2
301	Barking and Dagenham	2	2	3	3	2
302	Barnet	2	3	2	2	1
303	Bexley	3	3	2	3	2
304	Brent	2	3	2	3	2
305	Bromley	3	3	3	2	1
306	Croydon	1	2	2	2	2
307	Ealing	3	2	3	2	2
308	Enfield	3	3	3	3	3
203	Greenwich	2	2	1	3	2
310	Harrow	-	-	-	-	-
311	Havering	-	-	-	-	-
312	Hillingdon	-	-	-	-	-
313	Hounslow	2	2	2	2	1
314	Kingston upon Thames	-	-	-	-	-
315	Merton	2	3	3	2	3
317	Redbridge	3	3	2	3	3
318	Richmond upon Thames	3	3	2	3	2
319	Sutton	-	-	-	-	-
320	Waltham Forest	-	-	-	-	-

Table 2: Self-evaluation scores for measures on each of the five criteria on the indicator in Local Authorities (cont)
Apr-Jun 2010
Coverage: England, by Local Authority and Government Office Region

Self-evaluation Score; The extent to which...					
	Local information about running away is gathered	Local needs analysis is in place (based on the information gathered)	Local procedures to meet the needs of runaways agreed	Protocols for responding to urgent/out of hours referrals from police or other agencies are in place	Local procedures include effective needs assessment protocols, to support effective prevention /intervention work
SOUTH EAST	2.2	2.2	2.2	2.6	1.9
867 Bracknell Forest	2	2	3	3	3
846 Brighton and Hove	2	2	2	3	1
825 Buckinghamshire	1	1	1	2	3
845 East Sussex	3	3	3	3	3
850 Hampshire	-	-	-	-	-
921 Isle of Wight	3	3	2	3	3
886 Kent	3	2	3	3	1
887 Medway	2	2	2	2	1
826 Milton Keynes	2	2	2	2	2
931 Oxfordshire	-	-	-	-	-
851 Portsmouth	-	-	-	-	-
870 Reading	2	2	2	2	1
871 Slough	3	3	2	3	2
852 Southampton	-	-	-	-	-
936 Surrey	2	2	2	2	2
869 West Berkshire	2	2	2	3	1
938 West Sussex	2	2	2	2	1
868 Windsor and Maidenhead	2	3	2	3	2
872 Wokingham	2	2	3	3	2
SOUTH WEST	1.8	2.2	2.0	2.2	1.8
800 Bath and North East Somerset	2	2	2	2	2
837 Bournemouth	2	2	2	2	2
801 Bristol, City of	2	2	1	2	2
908 Cornwall	1	2	3	2	1
878 Devon	-	-	-	-	-
835 Dorset	2	2	1	2	2
916 Gloucestershire	2	2	2	2	3
420 Isles of Scilly	1	2	2	2	1
802 North Somerset	3	3	3	3	1
879 Plymouth	-	-	-	-	-
836 Poole	1	2	1	2	1
933 Somerset	2	2	2	3	2
803 South Gloucestershire	2	3	1	3	2
866 Swindon	-	-	-	-	-
880 Torbay	2	2	3	2	3
865 Wiltshire	2	2	3	2	1

Source: Young runaways self-assessment tool

¹ Some local authorities did not provide information on the indicator. These cases are denoted by - .