

SFR 03/2011

29 March 2011

Coverage: England

**Theme: Children,
Education and Skills**

Issued by

Department for Education
Sanctuary Buildings
Great Smith Street
London SW1P 3BT

Telephone:

Press Office

020 7925 6789

Public Enquiries

0370 000 2288

Statistician

Andrew Clarke

Email

schools.statistics@education.gov.uk
on.gsi.gov.uk

Internet

<http://www.education.gov.uk/rsgateway/DB/SFR/s000994/index.shtml>

PUPIL ABSENCE IN SCHOOLS IN ENGLAND, INCLUDING PUPIL CHARACTERISTICS: 2009/10

INTRODUCTION

This Statistical First Release (SFR) reports on absence in maintained primary, secondary and special schools, city technology colleges and academies during the 2009/10 school year. It updates and supplements information published in SFR 29/2010 in October 2010. It is based on pupil level absence data collected via the School Census. The release provides information on the levels of absence (authorised, unauthorised and overall) by type of school; absence rates by pupil characteristics (such as gender, free school meal eligibility, ethnic group and special educational needs); the percentage of pupils by number of days of absence; as well as summary statistics on persistent absentees (the percentage of absence these pupils account for; their characteristics; the number of schools where the percentage of persistent absentees falls within certain ranges); and information on the reasons for absence.

The main changes from last year's SFR are:

- Absence for state-funded secondary schools and special schools are now available at local authority level (tables 8.1 and 8.2).
- Characteristics tables for persistent absentees are now available by type of school (tables 5.2 and 5.4).
- The addition of a national level table showing the IDACI decile of pupil residence (table 7.1)

KEY POINTS

ABSENCE RATES

- The percentages of half days missed due to absence in maintained primary, state-funded secondary and special schools in England for 2009/10, are as follows (figures in brackets refer to 2008/09):

Authorised Absence 5.00 per cent (5.21 per cent)

Unauthorised Absence 1.04 per cent (1.05 per cent)

Overall Absence 6.04 per cent (6.27 per cent)

- Overall absence rates decreased in maintained primary, state-funded secondary and special schools.

- Authorised absence rates decreased in maintained primary, state-funded secondary and special schools.
- Unauthorised absence rates decreased in state-funded secondary and special schools, but increased in maintained primary schools, continuing the trend of recent years.

PERSISTENT ABSENTEES

A Persistent Absentee (PA) is defined as having 64 or more sessions of absence (authorised and unauthorised) during the year, around 20 per cent overall absence rate.

- In 2009/10 there were 184,020 PAs in maintained primary, state-funded secondary and special schools (2.9 per cent of enrolments). In maintained primary schools, 47,510 PAs accounted for 1.4 per cent of enrolments; in state-funded secondary schools this was 128,210 PAs (4.4 per cent) and in special schools it was 8,300 PAs (10.5 per cent). (Table 1.2)
- Compared with 2008/09, the rate of PAs has reduced from 3.3 per cent to 2.9 per cent. The biggest rate reduction was in special schools, from 11.2 per cent to 10.5 per cent. (Table 1.2)
- The rate of overall absence for PAs was 34.3 per cent, over 5 times higher than the rate for all pupils. (Tables 1.1 and 1.2)
- Across all schools types, PAs accounted for 16.3 per cent of overall absence; 11.4 per cent of authorised absence and 40.0 per cent of unauthorised absence. (Table 1.2)
- Over 8 out of 10 of all state-funded secondary schools, the percentage of the school population who are PAs is 6 per cent or below. In most maintained primary schools (87.6 per cent), 3 per cent or less of the school population are PAs. (Table 4.1)

REASON FOR ABSENCE

It is not compulsory for schools to provide reasons for absence data; it is dependent on the software used by schools to collate their attendance data. See Technical Note 11.

- Within the overall absence rate of 6.04 per cent, 3.49 per cent of days were recorded as illness (not medical or dental appointments). (Table 2.1)
- The second most commonly reported reason for absence was family holiday which includes the following reason codes: agreed family holiday; agreed extended family holiday; and family holiday not agreed. Absence for family holidays accounted for 0.56 per cent of days. Around 76 per cent of these days were authorised by the school. (Table 2.1)

DISTRIBUTION OF ABSENCE

- Per pupil enrolment, the average total absence in maintained primary schools was just under 8 school days (around 15 half days); in state-funded secondary schools it was just over 10 school days (around 20 half days); and in special schools the figure was just over 14 school days (almost 29 half days).
- 6.38 per cent of pupil enrolments had no absence from school in 2009/10. (Table 3.1 and Chart A)

ABSENCE BY PUPIL CHARACTERISTICS

- In 2009/10, some 1.4 per cent of girls in maintained primary schools were PAs. This is slightly lower than the proportion of boys who were PAs (1.5 per cent). Conversely, in state-funded secondary schools, 4.6 per cent of girls were PAs compared to 4.2 per cent of boys. (Table 5.2)
- The occurrence of PAs was higher amongst pupils who were known to be eligible for and claiming free school meals (FSM). In 2009/10 in maintained primary, state-funded secondary and special schools, 6.4 per cent of pupils who were known to be eligible for and claiming FSM were PAs, compared with 2.1 per cent for the rest of the school population. (Table 5.2)
- Rates of overall absence generally increase through the main national curriculum year groups. The rate of overall absence for pupils in national curriculum year group 11 (8.52 per cent) was 1.6 times the rate of overall absence for those pupils in national curriculum year group 7 (5.45 per cent). (Table 5.1)
- In maintained primary schools, the highest percentage of PAs is in those pupils in national curriculum year groups 1 and below (1.9 per cent of enrolments). In state-funded secondary schools, for national curriculum year groups 7 to 11, the percentage of PAs increases as pupils progress through school. For these year groups in state-funded secondary schools, the highest percentage of PAs is in year 11, where some 7.4 per cent of enrolments were PAs. (Table 5.2)
- Looking at absence rates by pupils with special educational needs, the highest rates of overall absence were amongst those pupils at *School Action Plus* at 9.19 per cent. This is 1.7 times that for those pupils with no identified special educational needs. (Table 5.1)
- Of all pupils with a statement of special educational needs 8.4 per cent were persistent absentees this is 4.7 times higher than those pupils with no identified special educational need who were persistent absentees. Of pupils at *School Action* 4.6 per cent were persistent absentees and of pupils at *School Action Plus* 8.5 per cent were persistent absentees. (Table 5.2)
- Pupils with Profound and Multiple Learning Difficulty had the highest rate of overall absence, at 14.38 per cent. Those pupils with Speech, Language and Communications Needs had the lowest overall absence rate (6.55 per cent). (Table 5.5)
- Absence rates were highest for Traveller of Irish Heritage (23.5 per cent overall absence) and Gypsy/Roma (18.09 per cent overall absence) ethnic groups. The rate of overall absence for pupils of Asian and Mixed ethnic origin was above the national average; for pupils of Black and Chinese ethnic origin it was well below the national average. The overall absence rate for all pupils was 6.04 per cent. Caution is recommended in interpreting the data for Traveller of Irish Heritage children and Gypsy/Roma children due to potential under-reporting for these ethnic classifications. (Table 5.3)
- The percentage of PAs was highest for the Traveller of Irish Heritage (30.8 per cent of all Traveller of Irish Heritage children were PAs); Gypsy/Roma (23.3 per cent) and Mixed (White and Black Caribbean) (4.5 per cent) ethnic groups. The percentage of PAs for all pupils was 2.9 per cent. Caution is recommended in interpreting the data for Traveller of Irish Heritage children and Gypsy/Roma children due to potential under-reporting for these ethnic classifications. (Table 5.4)

ACADEMIES

- Although 203 academies were open by the end of the 2009/10 academic year, only 133 had been open long enough to return absence data for the 2008/09 and the 2009/10 academic years. For those 133 academies, the rate of overall absence has fallen from 8.38 per cent to 7.61 per cent. The percentage of Persistent Absentees has also fallen, from 7.1 per cent to 5.9 per cent. (Table 6.1)

INCOME DEPRIVATION AFFECTING CHILDREN INDICES (IDACI)

- Overall rates of absence and persistent absence have decreased in deprived areas but remain higher than in other areas. The rate of overall absence for pupils living in the most deprived areas (7.22 per cent) is 1.6 times higher than that for pupils living in the least deprived areas (4.47 per cent). (Table 7.1)
- Over half (52.3 per cent) of all persistent absentees live in the 30% most deprived areas and account for 8.3 per cent of all absence. Over a fifth (20.6 per cent) of persistent absentees live in the 10% most deprived areas and account for 3.3 per cent of all absence.
- Rates of overall and persistent absence are proportionally higher in urban areas overall but this pattern varies depending on the relative level of deprivation. Rates of overall and persistent absence are higher in the most deprived rural areas than the most deprived urban areas. (Table 9.1)

CHARTS

- Chart A** Maintained Primary, State-funded Secondary and Special Schools: Distribution of enrolments by length of overall absence, England 2009/10
- Chart B** Maintained Primary, State-funded Secondary and Special Schools: Overall absence rates by sector, England 2005/06 to 2009/10

TABLES

- Table 1.1** Maintained Primary, State-funded Secondary and Special Schools: Pupil absence by type of school, England 2005/06 to 2009/10
- Table 1.2** Maintained Primary, State-funded Secondary and Special Schools: Persistent absentees, England 2005/06 to 2009/10
- Table 2.1** Maintained Primary, State-funded Secondary and Special Schools: Absence by reason and gender, England 2009/10
- Table 2.2** Maintained Primary, State-funded Secondary and Special Schools: Absence by reason for persistent absentees, England 2009/10
- Table 3.1** Maintained Primary, State-funded Secondary and Special Schools: Distribution of enrolments by length of overall absence, England 2009/10
- Table 3.2** Maintained Primary, State-funded Secondary and Special Schools: Percentage of enrolments by their overall absence rates, England 2009/10
- Table 4.1** Maintained Primary, State-funded Secondary and Special Schools: Number of schools by the percentage of persistent absentees, England 2009/10
- Table 5.1** Maintained Primary, State-funded Secondary and Special Schools: Pupil absence by characteristics, England 2009/10
- Table 5.2** Maintained Primary, State-funded Secondary and Special Schools: Characteristics of persistent absentees, England 2009/10
- Table 5.3** Maintained Primary, State-funded Secondary and Special Schools: Pupil absence by ethnic group, England 2009/10
- Table 5.4** Maintained Primary, State-funded Secondary and Special Schools: Persistent absentees by ethnic group, England 2009/10
- Table 5.5** Maintained Primary, State-funded Secondary and Special Schools: Absence rates by type of special educational need, England 2009/10
- Table 6.1** Analysis of Academies With Results in Both 2008/09 and 2009/10: Pupil absence, England 2008/09 and 2009/10

Table 6.2 All Academies: Pupil absence, England 2008/09 and 2009/10

Table 7.1 Maintained Primary, State-funded Secondary and Special Schools: Pupil absence by IDACI decile of pupil residence, England 2008/09 and 2009/10

ADDITIONAL INFORMATION

Supplementary tables, including figures at Local Authority (LA), Government Office Region (GOR), Local Authority District level and Income Deprivation Affecting Children Indices (IDACI) are available on the DfE statistics website:

<http://www.education.gov.uk/rsgateway/DB/SFR/s000994/index.shtml>

Table 8.1 Maintained Primary, State-funded Secondary and Special Schools: Pupil absence by type of school, by Local Authority Area and Government Office Region, England 2009/10

Table 8.2 Maintained Secondary Schools and Maintained Special Schools: Pupil absence by type of school, by Local Authority Area and Government Office Region, England 2009/10

Table 8.3 Maintained Secondary Schools: Rates of overall absence and persistent absentees, by Local Authority Area and Government Office Region, England 2005/06 to 2009/10

Table 9.1 Pupil absence in schools by degree of rurality of school location, England 2009/10

Table 9.2 Pupil absence in schools by Local Authority District of school location, England 2009/10

Table 9.3 Pupil absence in schools by IDACI decile of pupil residence, England 2009/10

Table 9.4 Pupil absence in schools by degree of rurality of pupil residence, England 2009/10

Table 9.5 Pupil absence in schools by Local Authority District of pupil residence, England 2009/10

Table 9.6 Pupil absence in schools in by IDACI decile and degree of rurality of pupil residence, England 2009/10

Additional analyses showing absence in pupil referral units will be made available in May 2011 at <http://www.education.gov.uk/rsgateway/DB/SFR/s000994/index.shtml>. The exact date and format will be preannounced four weeks before publication.

In line with the Government's data transparency agenda, underlying data (including some summary school level analyses) will be published at <http://www.education.gov.uk/rsgateway/DB/SFR/s000994/index.shtml> on 29 March 2011 in the 'Publication's Underlying Data' section.

RELATED PUBLICATIONS

DfE: Pupil Absence in Schools in England, Including Pupil Characteristics: 2008/09
<http://www.education.gov.uk/rsgateway/DB/SFR/s000918/index.shtml>

DfE: Pupil Absence in Schools in England: Autumn Term 2009 and Spring Term 2010
<http://www.education.gov.uk/rsgateway/DB/SFR/s000962/index.shtml>

DfE: Pupil Absence in Schools in England - Spring Term 2010
<http://www.education.gov.uk/rsgateway/DB/SFR/s000946/index.shtml>

DfE: Statistical Release - Pupil Absence in Autumn Term 2009
<http://www.education.gov.uk/rsgateway/DB/SFR/s000928/index.shtml>

DfE: Outcomes for Children Looked After by Local Authorities in England, as at 31 March 2010
<http://www.education.gov.uk/rsgateway/DB/SFR/s000978/index.shtml>. The absence data shown in this release have been updated to the 2009/10 school year.

Guidance on school and pupil characteristics collected via the School Census is available on the DfE Statistics website: <http://www.education.gov.uk/rsgateway/schoolcensus.shtml>

TECHNICAL NOTES

Definitions

1. The measures of absence used here are rates of authorised, unauthorised and overall absence and persistent absentees. Some cases of unauthorised absence may change to authorised absence at a later stage (once an explanation has been reported to the school). However, if this is supplied to the school after the School Census (SC) database has closed, the absence will still be recorded as “no reason yet”. In this respect, using overall absence rates and the rate of persistent absentees gives more suitable data for performance reporting.
2. The Department for Education (DfE) has published specific guidance ‘Keeping Pupil Registers’, which provides guidance on applying the Education (Pupil Registration) (England) Regulations 2006; and ‘Absence and Attendance Codes’ which provides guidance on the use of codes to record pupil attendance and absence in schools. Both are available at <http://www.education.gov.uk/schools/pupilsupport/behaviour/attendance/schoolattendancedata/a0010008/pupil-registration-regulations-and-guidance>.
3. In law, parents of children of compulsory school age (aged 5 to 15 at the start of the school year) are required to ensure that they receive a suitable education by regular attendance at school or otherwise. Failure to comply with this statutory duty can lead to prosecution. Local authorities (LAs) are responsible in law for making sure that pupils attend school.
4. Schools are required to take attendance registers twice a day: once at the beginning of the morning session and once during the afternoon session. In their register, schools are required to distinguish whether pupils are present, engaged in an approved educational activity or are absent. Where a day pupil of compulsory school age is absent, schools have to indicate in their register whether the absence is authorised by the school or unauthorised.
5. Authorised absence is absence with permission from a teacher or other authorised representative of the school. This includes instances of absences for which a satisfactory explanation has been provided (for example, illness).
6. Unauthorised absence is absence without permission from a teacher or other authorised representative of the school. This includes all unexplained or unjustified absences. Arriving late for school, after the register has closed, is recorded as unauthorised absence.
7. Persistent absentees are defined as having 64 or more sessions of absence (authorised and unauthorised) during the year, around 20 per cent overall absence rate.

Data Collection

8. Prior to 2005/06 the Department's main source of absence data was the Absence in Schools Survey which was conducted in May each year and collected the number of day pupils of compulsory school age together with information on the number of sessions missed due to authorised and unauthorised absence from maintained primary, maintained secondary, all special and independent schools, city technology colleges and academies in England. Findings from the 2005/06 survey have been published in SFR 35/2006 available at: <http://www.education.gov.uk/rsgateway/DB/SFR/s000679/index.shtml>. Coverage of the 2006/07 survey was reduced to maintained primary schools only. These findings have not been published as national statistics but have been used to validate data collected via the School Census (see Technical Note 10).
9. In 2006 the School Census started to collect pupil level absence data on a termly basis (spring, summer and autumn collections) from maintained secondary schools, city technology colleges and academies relating to absence during the 2005/06 school year. For the 2006/07 school year the scope of collection was extended to also include maintained primary schools and special schools. Special schools provide annual absence data in the autumn SC.
10. Absence data for maintained primary schools in 2006/07 collected via the Absence in Schools Survey provides very similar absence rates (authorised, unauthorised and overall) to those derived from data collected via the School Census. A comparison of figures derived from the two sets of data is given in the table:

**MAINTAINED PRIMARY SCHOOLS:
COMPARISON OF ABSENCE DATA COLLECTED VIA THE ABSENCE IN
SCHOOLS SURVEY AND THE SCHOOL CENSUS**

2006/07
England

	Absence in Schools Survey	School Census
Maintained Primary Schools		
Number of day pupils of compulsory school age	..	3,306,900
Number of enrolments	3,439,020	3,463,120
Percentage of half days missed:		
authorised absence	4.68	4.66
unauthorised absence	0.51	0.52
overall absence	5.18	5.18

.. Not available

At school level the variation in authorised absence rate between both collections is low – 94 per cent of schools show a difference of less than one percentage point. This pattern is also reflected in unauthorised absence rates.

11. Reason for absence was collected for the first time for the autumn term 2006. Schools are able to provide absence data using a reason code or by using total figures for the number of sessions missed due to authorised or unauthorised absence. A small proportion of schools have provided both a breakdown of absence by reason and totals. In addition, some schools do not have the required software to provide absence data by reason, and therefore are only able to provide overall totals. To derive absence rates, the sum of absence by reason has been used unless this is missing or is less than the total provided, in which case overall totals have been used.
12. Data are collected a term in arrears, meaning that where a school closes, data are not collected for the last term the school was open. School closures tend to take place in the summer, in which case data for the summer term (first half of) will not be collected. In 2009/10 there were some 74 schools which closed at the end of the academic year and were superseded by new academies (other schools will also have closed). We have carried out some analysis that excludes the 74 academy predecessor schools to illustrate the effect on PA rates. At a national level, the PA rate for maintained secondary schools of 4.2 per cent was unchanged by the removal of these schools. Further analysis, substituting a two term PA threshold for predecessor schools leads to a small rise in the national PA rate, to 4.3 per cent. However, not all two term PAs go on to be PAs at the end of the year. No adjustments have been made in the SFR in relation to the school absences.

Data Coverage and Quality

13. Schools have provided, via the SC, individual level attendance data relating to the autumn term 2009, spring term 2010 and first half of the summer term 2010 for pupils aged 5 to 15 (at the start of the school year), who are non-boarders at the time of the census. In each term, the SC has collected the number of possible sessions of attendance; the number of sessions missed, broken down by reason for absence, and overall totals of sessions missed due to authorised and unauthorised absence.
14. The SC collects information for a pupil's attendance in the term prior to the census. For example, the spring SC collects information on absence during the previous autumn term. Absence data for the 2009/10 year have been derived by linking pupil records collected in the spring 2010 SC, summer 2010 SC and autumn 2010 SC to derive overall annual totals for the number of possible sessions; the number of sessions missed by reason for absence and the number of sessions missed due to authorised and unauthorised absence for each enrolment. Pupil characteristic data are not collected retrospectively. For example, the autumn 2010 SC collects a pupil's national curriculum year group as at autumn 2010 together with their attendance in the previous summer 2010 term. Derived annual absence totals have been linked to characteristic data collected in the spring SC. Where characteristic data are missing in the spring SC, information collected in the summer SC has been used. For free school meals and special educational needs, where this characteristic data was still missing, information collected in the autumn 2009 census, or, finally, the spring 2009 census has been used.
15. Information relating to pupil absence counts the number of pupil enrolments rather than the number of pupils. Where a pupil has moved school throughout the year, they will be counted more than once as they have recorded attendance in more than one school. Pupil absence is recorded for the period a pupil is enrolled at a school. Where a pupil has a dual registration, their absence may be returned from both schools, if both schools return absence data via the School Census.

16. For a pupil enrolment, if the number of possible sessions in a term is zero/missing or is less than the total number of sessions missed due to overall absence, or if the total number of possible sessions exceeds the limit for the term, then the absence variables have been set to zero for that term only, and that term's information has been discounted from this SFR. If the total number of possible sessions for each and every term equals zero, then the enrolment has not been included.
17. The information provided in this release is for 2.5 terms of the 2009/10 academic year. Data relating to the summer term is only required up until the Friday before the Spring Bank Holiday at the end of May, rather than the full term. One academy which opened in September 2010 returned summer term absence data for their predecessor school which closed during the 2009/10 year. The data provided for this term has been excluded from this analysis.
18. The information in this SFR is based on data returned by schools as part of the School Census. It does not include data which has been submitted by local authorities or schools outside of the School Census collection.
19. The data presented here are based on attendance registers which are taken twice a day: once at the beginning of the morning session and once during the afternoon session. It therefore does not include "internal unauthorised absence". This is defined as unauthorised absence by pupils between the school's twice-daily registrations, i.e. a pupil is recorded as attending during morning or afternoon registration but is physically not present at another part of the relevant session. The Department's current data systems are limited insofar as they only record and measure the registrations, not any subsequent absence.
20. The data contained in this SFR relates only to those pupils on the roll of a maintained primary or maintained secondary school, city technology college, academy or special school. It does not include those children who are not registered at a school.
21. For SFR03/2009 (<http://www.education.gov.uk/rsgateway/DB/SFR/s000832/index.shtml>), regarding 2007/08 figures, there was a late notification from a school, which was not deemed sufficiently significant to be reflected in the SFR. However, it was decided to feature this change in all future analyses, and so there are some minor differences in 2007/08 figures quoted in this publication.

Local Area Statistics

22. IDACI is provided by the Department for Communities and Local Government (CLG). The index is based on Super Output Areas (SOAs) in England. Each SOA is given a rank between 1 and 32,482 where 1 is the most deprived SOA.
23. IDACI is a subset of the Income Deprivation Domain of the Index of Multiple Deprivation 2007. Each SOA is given a score showing the percentage of children aged under 16 that live in families that are income deprived, i.e. they are in receipt of certain benefits and their equivalised income is below 60% of median before housing costs. Further information about IDACI can be found on the CLG website at: <http://www.communities.gov.uk/publications/communities/indicesdeprivation07>.
24. IDACI bands for 2007/08, 2008/09 and 2009/10 are based on 2007 IDACI scores. Care should be taken when comparing to IDACI tables for 2006/07 and earlier, which are based on 2004 IDACI scores.

25. The Rural and Urban Area Classification is a product of a joint project to produce a single and consistent classification of urban and rural areas. The project was sponsored by a number of Government Departments. The rural and urban definitions classify Output Areas, Wards and Super Output Areas by aggregating the underlying hectare grid squares classifications for the measures of settlement size and sparsity. Up to 8 classes of Output Areas could be distinguished; four settlement types (urban, town and fringe, village, hamlet and isolated dwelling) in either a sparse or less sparse regional setting. Further information about the Rural and Urban Area Classification 2004 can be found on the National Statistics website at: <http://www.statistics.gov.uk/geography/nrudp.asp>.

General

26. For national tables (tables 1.1 to 7.1), pupil or enrolment numbers have been rounded to the nearest 5. Pupil or enrolment numbers of 1 or 2 have been suppressed, being replaced in the table by an 'x'. Where any number is shown as zero (0), the original figure was also zero. Where the numerator or denominator of any percentage calculated on enrolment numbers is 1 or 2, this has been replaced by an 'x'.

27. For local authority tables (tables 8.1 to 8.3), national and government office region enrolment numbers have been rounded to the nearest 5. Enrolment numbers of 1 or 2 have been suppressed, being replaced in the table by an 'x'. Where any number is shown as zero (0), the original figure was also zero. Where the numerator or denominator of any percentage calculated on enrolment numbers is 1 or 2, this has been replaced by an 'x'.

28. For tables 9.1 to 9.6, enrolment numbers of 1 or 2 have been suppressed, being replaced in the table by an 'x'. Where any number is shown as zero (0), the original figure was also zero. Where the numerator or denominator of any percentage calculated on enrolment numbers is 1 or 2, this has been replaced by an 'x'. Some additional figures have also been suppressed to prevent the possibility of a suppressed figure being revealed.

29. All percentages have been rounded to two decimal places, except where they refer to persistent absentees, where one decimal place has been used.

30. The following symbols have been used within this publication:

0	– zero
x	– small number suppressed to preserve confidentiality (see Technical Notes 26 to 28)
.	– not applicable
..	– not available

31. The United Kingdom Statistics Authority has designated these statistics as National Statistics, in accordance with the Statistics and Registration Service Act 2007 and signifying compliance with the Code of Practice for Official Statistics.

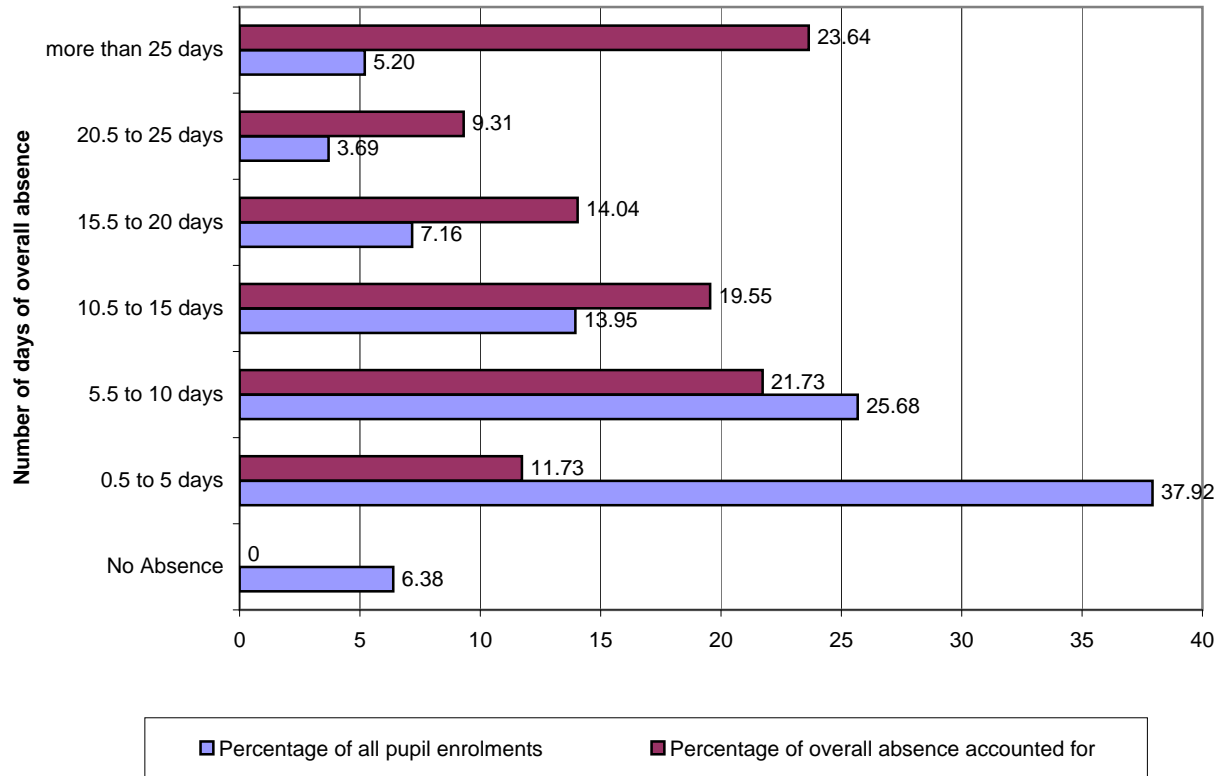
Designation can be broadly interpreted to mean that the statistics:

- meet identified user needs;
- are well explained and readily accessible;
- are produced according to sound methods, and
- are managed impartially and objectively in the public interest.

Once statistics have been designated as National Statistics it is a statutory requirement that the Code of Practice shall continue to be observed.

32. Further information, including local authority level analyses, are available through the following link:- <http://www.education.gov.uk/rsgateway/DB/SFR/s000994/index.shtml>.
33. There are no planned revisions to this Statistical First Release, however, if at a later date we need to make a revision, this will comply with the departmental revisions policy which is published at <http://www.education.gov.uk/rsgateway/nat-stats.shtml>.
34. Enquiries (non-media) or feedback about information contained in this document should be addressed to Schools Data Unit, Room 1F Area H, Mowden Hall, Staindrop Road, Darlington, Co Durham, DL3 9BG or e-mail schools.statistics@education.gsi.gov.uk.
35. Media enquiries about information contained in this Statistical First Release should be made to the Department's Press Office at DfE, Sanctuary Buildings, Great Smith Street, London, SW1P 3BT or telephone 020 7925 6789.

Chart A
MAINTAINED PRIMARY, STATE-FUNDED SECONDARY AND SPECIAL SCHOOLS (1)(2)(3):
DISTRIBUTION OF ENROLMENTS BY LENGTH OF OVERALL ABSENCE
 2009/10
 England



- (1) Includes middle schools as deemed.
- (2) Includes maintained secondary schools, city technology colleges and academies (including all-through academies).
- (3) Includes maintained and non-maintained special schools. Excludes general hospital schools.

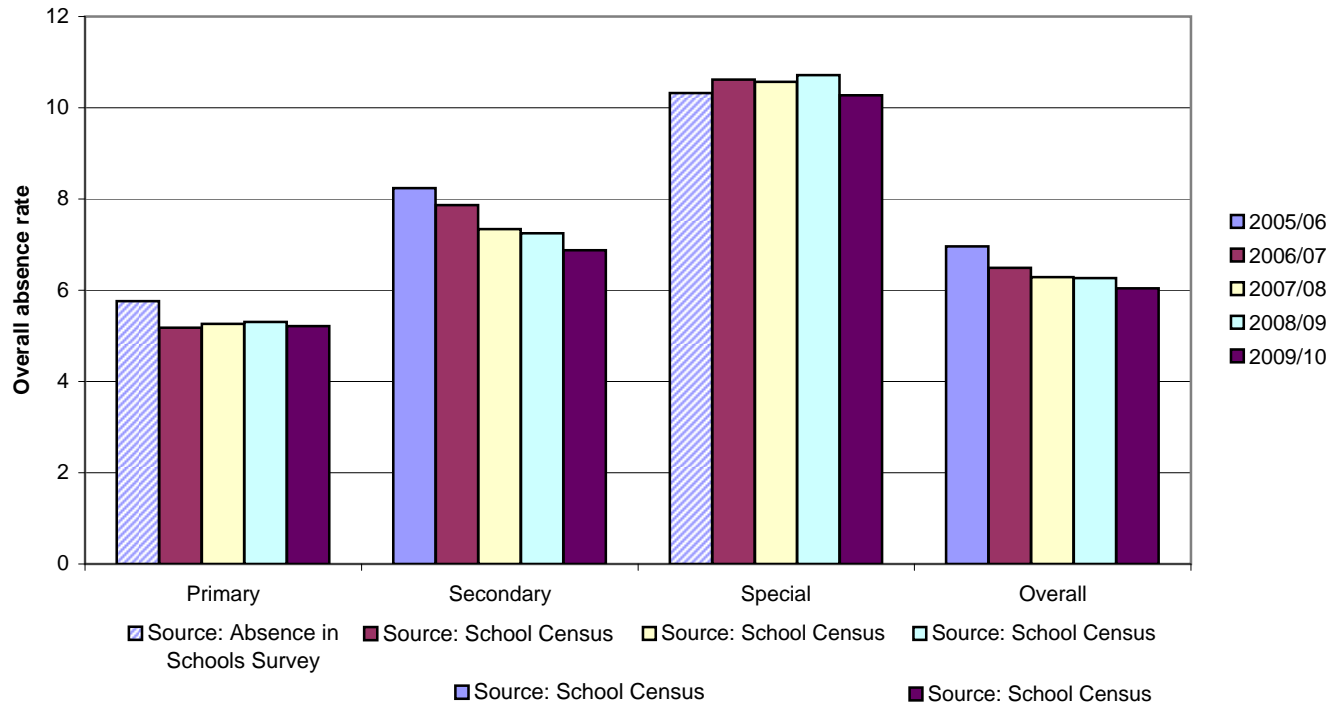
Chart B

MAINTAINED PRIMARY, STATE-FUNDED SECONDARY AND SPECIAL SCHOOLS (1)(2)(3):

OVERALL ABSENCE RATES BY SECTOR

2005/06 to 2009/10

England



(1) Includes middle schools as deemed.

(2) Includes maintained secondary schools, city technology colleges and academies (including all through academies).

(3) Includes maintained and non-maintained special schools. Excludes general hospital schools.

Table 1.1

MAINTAINED PRIMARY, STATE-FUNDED SECONDARY AND SPECIAL SCHOOLS (1)(2)(3):**PUPIL ABSENCE BY TYPE OF SCHOOL**

2005/06 to 2009/10

England

	2005/06	2006/07	2007/08	2008/09	2009/10
Total					
Number of day pupils of compulsory school age (4)	6,568,155	6,332,065	6,244,890	6,182,245	6,163,875
Number of pupil enrolments (5)	..	6,582,425	6,478,155	6,408,545	6,387,685
Percentage of half days missed due to (6):					
Authorised absence	6.05	5.49	5.28	5.21	5.00
Unauthorised absence	0.92	1.00	1.01	1.05	1.04
Overall absence	6.96	6.49	6.29	6.27	6.04
Maintained Primary Schools (1)					
Number of day pupils of compulsory school age (4)	3,509,555	3,306,905	3,263,380	3,231,375	3,232,455
Number of pupil enrolments (5)	..	3,463,120	3,412,005	3,375,830	3,374,040
Percentage of half days missed due to (6):					
Authorised absence	5.30	4.66	4.69	4.66	4.54
Unauthorised absence	0.45	0.52	0.57	0.64	0.67
Overall absence	5.76	5.18	5.26	5.30	5.21
State-funded Secondary Schools (1)(2)					
Number of day pupils of compulsory school age (4)	2,983,045	2,952,355	2,910,515	2,879,555	2,859,695
Number of pupil enrolments (5)	3,056,325	3,042,075	2,988,750	2,954,325	2,934,805
Percentage of half days missed due to (6):					
Authorised absence	6.82	6.36	5.87	5.76	5.43
Unauthorised absence	1.42	1.52	1.49	1.49	1.45
Overall absence	8.24	7.87	7.36	7.25	6.88
Special Schools (3)					
Number of day pupils of compulsory school age (4)	75,555	72,810	70,995	71,315	71,725
Number of pupil enrolments (5)	..	77,225	77,400	78,385	78,840
Percentage of half days missed due to (6):					
Authorised absence	8.79	8.55	8.41	8.58	8.30
Unauthorised absence	1.80	2.07	2.16	2.14	1.98
Overall absence	10.59	10.62	10.57	10.72	10.27

Source: Absence in Schools Survey and School Census (7)

(1) Includes middle schools as deemed.

(2) Includes maintained secondary schools, city technology colleges and academies (including all-through academies).

(3) Includes maintained and non-maintained special schools. Excludes general hospital schools, independent special schools and independent schools approved for SEN pupils. Previously published figures for 2005/06 included independent special schools and independent schools approved for SEN pupils and will therefore differ from those in Table 1.1.

(4) Pupil numbers are as at January each year. Includes pupils aged 5 to 15 with sole and dual (main) registration. Excludes boarders and those pupils for whom boarding information was not supplied.

(5) Number of pupil enrolments in schools from start of the school year up until the end of the fifth half term. Includes pupils on the school roll for at least one session who are aged between 5 and 15, excluding boarders. Some pupils may be counted more than once (if they moved schools during the school year or are registered at more than one school). See Technical Notes 13 to 15.

(6) The number of sessions missed due to authorised/ unauthorised/ overall absence expressed as a percentage of the total number of possible sessions.

(7) Figures in italics have been sourced from the Absence in Schools Survey. Other figures are derived from School Census returns. Totals provided for 2005/06 combine figures from both sources. See Technical Notes 8 to 10. Dashed lines in timeseries indicate changes in the underlying data source.

.. Not available

Totals may not appear to equal the sum of component parts because numbers have been rounded to the nearest 5.

Table 1.2

**MAINTAINED PRIMARY, STATE-FUNDED SECONDARY AND SPECIAL SCHOOLS (1)(2)(3):
PERSISTENT ABSENTEES (4)**

2005/06 to 2009/10

England

	2005/06	2006/07	2007/08	2008/09	2009/10
Total					
Number of pupil enrolments that are persistent absentees (4)(5)	..	272,955	232,810	208,380	184,020
Total number of pupil enrolments (5)	..	6,582,425	6,478,155	6,408,545	6,387,685
Percentage of pupil enrolments that are persistent absentees	..	4.1	3.6	3.3	2.9
Percentage of half days missed by persistent absentees due to (6):					
Authorised Absence	..	22.6	21.5	20.6	19.8
Unauthorised Absence	..	12.5	13.7	14.1	14.5
Overall absence	..	35.1	35.2	34.7	34.3
Percentage of absence for which persistent absentees are responsible (7):					
Authorised Absence	..	17.1	14.6	12.8	11.4
Unauthorised Absence	..	51.8	48.3	43.4	40.0
Overall absence	..	22.5	20.1	18.0	16.3
Maintained Primary Schools (1)					
Number of pupil enrolments that are persistent absentees (4)(5)	..	60,960	56,750	51,955	47,510
Total number of pupil enrolments (5)	..	3,463,120	3,412,005	3,375,830	3,374,040
Percentage of pupil enrolments that are persistent absentees	..	1.8	1.7	1.5	1.4
Percentage of half days missed by persistent absentees due to (6):					
Authorised Absence	..	22.2	21.5	20.8	20.2
Unauthorised Absence	..	7.8	8.5	8.8	9.0
Overall absence	..	30.0	29.9	29.6	29.2
Percentage of absence for which persistent absentees are responsible (7):					
Authorised Absence	..	8.4	7.6	6.9	6.3
Unauthorised Absence	..	26.4	24.8	21.1	18.9
Overall absence	..	10.3	9.5	8.6	7.9
State-funded Secondary Schools (1)(2)					
Number of pupil enrolments that are persistent absentees (4)(5)	217,385	203,175	167,610	147,635	128,210
Total number of pupil enrolments (5)	3,056,325	3,042,075	2,988,750	2,954,325	2,934,805
Percentage of pupil enrolments that are persistent absentees	7.1	6.7	5.6	5.0	4.4
Percentage of half days missed by persistent absentees due to (6):					
Authorised Absence	23.2	22.4	21.1	20.1	19.1
Unauthorised Absence	12.3	13.9	15.4	16.0	16.6
Overall absence	35.5	36.3	36.5	36.1	35.8
Percentage of absence for which persistent absentees are responsible (7):					
Authorised Absence	24.0	23.5	20.0	17.3	15.3
Unauthorised Absence	60.9	60.9	57.6	53.2	50.0
Overall absence	30.4	30.7	27.6	24.7	22.6
Special Schools (3)					
Number of pupil enrolments that are persistent absentees (4)(5)	..	8,820	8,450	8,790	8,300
Total number of pupil enrolments (5)	..	77,225	77,400	78,385	78,840
Percentage of pupil enrolments that are persistent absentees	..	11.4	10.9	11.2	10.5
Percentage of half days missed by persistent absentees due to (6):					
Authorised Absence	..	29.3	29.1	28.6	28.1
Unauthorised Absence	..	13.0	13.8	13.5	13.1
Overall absence	..	42.2	43.0	42.1	41.2
Percentage of absence for which persistent absentees are responsible (7):					
Authorised Absence	..	41.6	40.4	39.4	37.5
Unauthorised Absence	..	76.0	75.0	74.2	73.3
Overall absence	..	48.3	47.5	46.4	44.4

Source: School Census

(1) Includes middle schools as deemed.

(2) Includes maintained secondary schools, city technology colleges and academies (including all-through academies).

(3) Includes maintained and non-maintained special schools. Excludes general hospital schools.

(4) Persistent Absentees are defined as having 64 or more sessions of absence (authorised and unauthorised) during the year, around 20 per cent overall absence rate.

(5) Number of pupil enrolments in schools from start of the school year to the end of the fifth half term. Includes pupils on the school roll for at least one session who are aged between 5 and 15, excluding boarders. Some pupils may be counted more than once (if they moved schools during the school year or are registered in more than one school). See Technical Notes 13 to 15.

(6) The number of sessions missed due to authorised/unauthorised/overall absence expressed as a percentage of the total number of possible sessions.

(7) The total number of sessions missed due to authorised/unauthorised/overall absence by persistent absentees expressed as a percentage of the total number of sessions missed due to authorised/unauthorised/overall absence by all pupil enrolments.

.. Not available

Totals may not appear to equal the sum of the component parts because numbers have been rounded to the nearest 5.

Table 2.1

MAINTAINED PRIMARY, STATE-FUNDED SECONDARY AND SPECIAL SCHOOLS (1)(2)(3):**ABSENCE BY REASON AND GENDER**

2009/10

England

	Maintained Primary Schools (1)			State-funded Secondary Schools (1)(2)			Special Schools (3)			Total		
	Boys	Girls	Total	Boys	Girls	Total	Boys	Girls	Total	Boys	Girls	Total
<u>DISTRIBUTION OF REASONS FOR ABSENCE</u>												
Percentage of absent sessions due to (4):												
Illness (NOT medical or dental appointments)	60.47	61.40	60.92	55.03	56.95	56.00	41.81	52.51	44.69	57.16	58.91	58.02
Medical/dental appointments	5.18	4.79	4.99	5.74	6.53	6.14	8.66	12.47	9.69	5.56	5.81	5.68
Religious observance	1.43	1.42	1.42	0.76	0.68	0.72	0.52	0.74	0.58	1.06	1.01	1.04
Study leave	0.01	0.01	0.01	2.07	1.98	2.02	0.44	0.12	0.35	1.08	1.07	1.07
Traveller absence	0.37	0.37	0.37	0.12	0.10	0.11	0.25	0.09	0.20	0.24	0.22	0.23
Agreed family holiday	10.42	10.78	10.60	3.66	3.69	3.68	5.16	6.04	5.40	6.80	6.91	6.86
Agreed extended family holiday	0.34	0.34	0.34	0.10	0.09	0.10	0.36	0.52	0.40	0.22	0.21	0.21
Excluded, no alternative provision	0.56	0.05	0.31	3.31	1.18	2.23	3.31	0.87	2.65	2.05	0.67	1.37
Other authorised circumstances	8.27	8.07	8.17	8.15	7.85	8.00	17.34	14.36	16.54	8.46	8.02	8.24
Total Authorised Absence	87.05	87.23	87.14	78.94	79.05	79.00	77.85	87.72	80.50	82.63	82.83	82.73
Percentage of absent sessions due to (4):												
Family holiday not agreed	2.61	2.66	2.63	1.83	1.85	1.84	0.47	0.52	0.48	2.15	2.20	2.17
Arrived late	1.13	1.13	1.13	1.14	1.12	1.13	0.62	0.61	0.62	1.12	1.12	1.12
Other unauthorised circumstances	7.10	6.91	7.01	14.46	14.49	14.47	19.70	10.01	17.09	11.23	11.03	11.13
No reason yet	2.11	2.07	2.09	3.63	3.48	3.55	1.36	1.15	1.30	2.87	2.82	2.85
Total Unauthorised Absence	12.95	12.77	12.86	21.06	20.95	21.00	22.15	12.28	19.50	17.37	17.17	17.27
Total Overall Absence	100.00	100.00	100.00	100.00	100.00	100.00	100.00	100.00	100.00	100.00	100.00	100.00
<u>ABSENCE RATES BY REASON</u>												
Percentage of possible sessions missed due to (5):												
Illness (NOT medical or dental appointments)	3.14	3.19	3.17	3.67	4.00	3.84	4.26	5.10	4.49	3.41	3.58	3.49
Medical/dental appointments	0.27	0.25	0.26	0.38	0.46	0.42	0.88	1.21	0.97	0.33	0.35	0.34
Religious observance	0.07	0.07	0.07	0.05	0.05	0.05	0.05	0.07	0.06	0.06	0.06	0.06
Study leave	0.00	0.00	0.00	0.14	0.14	0.14	0.04	0.01	0.04	0.06	0.06	0.06
Traveller absence	0.02	0.02	0.02	0.01	0.01	0.01	0.03	0.01	0.02	0.01	0.01	0.01
Agreed family holiday	0.54	0.56	0.55	0.24	0.26	0.25	0.53	0.59	0.54	0.41	0.42	0.41
Agreed extended family holiday	0.02	0.02	0.02	0.01	0.01	0.01	0.04	0.05	0.04	0.01	0.01	0.01
Excluded, no alternative provision	0.03	0.00	0.02	0.22	0.08	0.15	0.34	0.08	0.27	0.12	0.04	0.08
Other authorised circumstances	0.43	0.42	0.42	0.54	0.55	0.55	1.77	1.39	1.66	0.50	0.49	0.50
Unclassified (6)	0.02	0.02	0.02	0.03	0.01	0.02	0.19	0.24	0.20	0.02	0.02	0.02
Total Authorised Absence	4.54	4.54	4.54	5.30	5.57	5.43	8.11	8.77	8.30	4.95	5.05	5.00
Percentage of possible sessions missed due to (5):												
Family holiday not agreed	0.14	0.14	0.14	0.12	0.13	0.13	0.05	0.05	0.05	0.13	0.13	0.13
Arrived late	0.06	0.06	0.06	0.08	0.08	0.08	0.06	0.06	0.06	0.07	0.07	0.07
Other unauthorised circumstances	0.37	0.36	0.36	0.97	1.02	0.99	2.01	0.97	1.72	0.67	0.67	0.67
No reason yet	0.11	0.11	0.11	0.24	0.24	0.24	0.14	0.11	0.13	0.17	0.17	0.17
Unclassified (6)	0.00	0.00	0.00	0.01	0.01	0.01	0.02	0.01	0.02	0.00	0.00	0.00
Total Unauthorised Absence	0.68	0.66	0.67	1.41	1.48	1.45	2.28	1.20	1.98	1.04	1.05	1.04
Total Overall Absence	5.22	5.21	5.21	6.71	7.05	6.88	10.39	9.97	10.27	5.99	6.10	6.04

Source: School Census

(1) Includes middle schools as deemed.

(2) Includes maintained secondary schools, city technology colleges and academies (including all-through academies).

(3) Includes maintained and non-maintained special schools. Excludes general hospital schools.

(4) The number of sessions absent by reason expressed as a percentage of the total number of sessions absent as reported by reason (not overall totals). See Technical Notes 11 and 13.

(5) The number of sessions absent by reason expressed as a percentage of the total number of sessions possible. See Technical Notes 11 and 13.

(6) Includes absence returned as either authorised or unauthorised totals but not broken down by reason. See Technical Note 11.

Table 2.2

MAINTAINED PRIMARY, STATE-FUNDED SECONDARY AND SPECIAL SCHOOLS (1)(2)(3):**ABSENCE BY REASON FOR PERSISTENT ABSENTEES (4)**

2009/10

England

	Persistent Absentees (4)				Other Pupils			
	Maintained Primary Schools (1)	State-funded Secondary Schools (1)(2)	Special Schools (3)	Total	Maintained Primary Schools (1)	State-funded Secondary Schools (1)(2)	Special Schools (3)	Total
DISTRIBUTION OF REASONS FOR ABSENCE								
Percentage of absent sessions due to (5):								
Illness (NOT medical or dental appointments)	46.0	33.9	33.8	36.5	62.2	62.5	53.3	62.2
Medical/dental appointments	3.9	3.3	5.1	3.5	5.1	7.0	13.3	6.1
Religious observance	0.4	0.1	0.2	0.2	1.5	0.9	0.9	1.2
Study leave	0.0	1.2	0.5	0.9	0.0	2.3	0.2	1.1
Traveller absence	3.8	0.4	0.4	1.1	0.1	0.0	0.1	0.1
Agreed family holiday	3.4	0.7	2.2	1.3	11.2	4.6	7.9	7.9
Agreed extended family holiday	1.1	0.1	0.5	0.3	0.3	0.1	0.3	0.2
Excluded, no alternative provision	1.2	4.0	3.2	3.3	0.2	1.7	2.2	1.0
Other authorised circumstances	9.5	10.0	21.7	10.5	8.1	7.4	12.4	7.8
Total Authorised Absence	69.2	53.5	67.7	57.7	88.7	86.4	90.7	87.6
Percentage of absent sessions due to (5):								
Family holiday not agreed	3.1	1.0	0.4	1.4	2.6	2.1	0.5	2.3
Arrived late	2.5	1.9	0.6	1.9	1.0	0.9	0.6	1.0
Other unauthorised circumstances	21.1	38.2	29.7	34.0	5.8	7.5	7.1	6.7
No reason yet	4.1	5.4	1.6	4.9	1.9	3.0	1.1	2.4
Total Unauthorised Absence	30.8	46.5	32.3	42.3	11.3	13.6	9.3	12.4
Total Overall Absence	100.0	100.0	100.0	100.0	100.0	100.0	100.0	100.0
ABSENCE RATES BY REASON								
Percentage of possible sessions missed due to (6):								
Illness (NOT medical or dental appointments)	13.4	12.1	13.6	12.5	3.0	3.5	3.4	3.2
Medical/dental appointments	1.1	1.2	2.0	1.2	0.2	0.4	0.8	0.3
Religious observance	0.1	0.0	0.1	0.1	0.1	0.1	0.1	0.1
Study leave	0.0	0.4	0.2	0.3	0.0	0.1	0.0	0.1
Traveller absence	1.1	0.1	0.2	0.4	0.0	0.0	0.0	0.0
Agreed family holiday	1.0	0.2	0.9	0.5	0.5	0.3	0.5	0.4
Agreed extended family holiday	0.3	0.0	0.2	0.1	0.0	0.0	0.0	0.0
Excluded, no alternative provision	0.4	1.4	1.3	1.1	0.0	0.1	0.1	0.1
Other authorised circumstances	2.8	3.6	8.7	3.6	0.4	0.4	0.8	0.4
Unclassified (7)	0.1	0.1	0.9	0.1	0.0	0.0	0.1	0.0
Total Authorised Absence	20.2	19.1	28.1	19.8	4.3	4.8	5.8	4.6
Percentage of possible sessions missed due to (6):								
Family holiday not agreed	0.9	0.3	0.2	0.5	0.1	0.1	0.0	0.1
Arrived late	0.7	0.7	0.2	0.7	0.0	0.1	0.0	0.0
Other unauthorised circumstances	6.1	13.6	11.9	11.6	0.3	0.4	0.4	0.3
No reason yet	1.2	1.9	0.6	1.7	0.1	0.2	0.1	0.1
Unclassified (7)	0.0	0.1	0.1	0.1	0.0	0.0	0.0	0.0
Total Unauthorised Absence	9.0	16.6	13.1	14.5	0.6	0.8	0.6	0.6
Total Overall Absence	29.2	35.8	41.2	34.3	4.9	5.6	6.4	5.2

Source: School Census

(1) Includes middle schools as deemed.

(2) Includes maintained secondary schools, city technology colleges and academies (including all-through academies).

(3) Includes maintained and non-maintained special schools. Excludes general hospital schools.

(4) Persistent Absentees are defined as having 64 or more sessions of absence (authorised and unauthorised) during the year, around 20 per cent overall absence rate.

(5) The number of sessions absent by reason expressed as a percentage of the total number of sessions absent as reported by reason (not overall totals). See Technical Notes 11 and 13.

(6) The number of sessions absent by reason expressed as a percentage of the total number of sessions possible. See Technical Notes 11 and 13.

(7) Includes absence returned as either authorised or unauthorised totals but not broken down by reason. See Technical Note 11.

Table 3.1

MAINTAINED PRIMARY, STATE-FUNDED SECONDARY AND SPECIAL SCHOOLS (1)(2)(3):**DISTRIBUTION OF ENROLMENTS BY LENGTH OF OVERALL ABSENCE**

2009/10

England

	Maintained Primary Schools (1)			State-funded Secondary Schools (1)(2)			Special Schools (3)			Total		
	Pupil enrolments in schools during 2009/10 (4)		Percentage of overall absence (5)	Pupil enrolments in schools during 2009/10 (4)		Percentage of overall absence (5)	Pupil enrolments in schools during 2009/10 (4)		Percentage of overall absence (5)	Pupil enrolments in schools during 2009/10 (4)		Percentage of overall absence (5)
	Number	Percentage		Number	Percentage		Number	Percentage		Number	Percentage	
Number of days overall absence:												
No Absence	229,145	6.79	0.00	171,605	5.85	0.00	7,040	8.93	0.00	407,790	6.38	0.00
0.5 to 5 days	1,375,590	40.77	14.61	1,024,835	34.92	9.47	22,070	27.99	5.55	2,422,495	37.92	11.73
5.5 to 10 days	890,630	26.40	25.88	733,200	24.98	18.53	16,775	21.28	11.34	1,640,605	25.68	21.73
10.5 to 15 days	453,320	13.44	21.84	426,900	14.55	17.86	10,725	13.60	12.01	890,940	13.95	19.55
15.5 to 20 days	216,855	6.43	14.61	234,255	7.98	13.69	6,550	8.31	10.23	457,655	7.16	14.04
20.5 to 25 days	103,235	3.06	8.94	128,510	4.38	9.66	4,110	5.21	8.26	235,850	3.69	9.31
more than 25 days	105,270	3.12	14.12	215,505	7.34	30.79	11,575	14.68	52.61	332,350	5.20	23.64
Total	3,374,040	100.00	100.00	2,934,805	100.00	100.00	78,840	100.00	100.00	6,387,685	100.00	100.00

Source: School Census

(1) Includes middle schools as deemed.

(2) Includes maintained secondary schools, city technology colleges and academies (including all-through academies).

(3) Includes maintained and non-maintained special schools. Excludes general hospital schools.

(4) Number of pupil enrolments in schools from start of the school year up until 28 May 2010. Includes pupils on the school roll for at least one session who are aged between 5 and 15, excluding boarders. Some pupils may be counted more than once (if they moved schools during the school year or are registered in more than one school). See Technical Notes 13 to 15.

(5) The number of sessions missed due to overall absence in each band expressed as a percentage of the total number of sessions missed due to overall absence.

Totals may not appear to equal the sum of the component parts because numbers have been rounded to the nearest 5.

Table 3.2

MAINTAINED PRIMARY, STATE-FUNDED SECONDARY AND SPECIAL SCHOOLS (1)(2)(3):**PERCENTAGE OF ENROLMENTS BY THEIR OVERALL ABSENCE RATES**

2009/10

England

	Maintained Primary Schools (1)			State-funded Secondary Schools (1)(2)			Special Schools (3)			Total		
	Pupil enrolments in schools during 2009/10 (4)		Percentage of overall absence (5)	Pupil enrolments in schools during 2009/10 (4)		Percentage of overall absence (5)	Pupil enrolments in schools during 2009/10 (4)		Percentage of overall absence (5)	Pupil enrolments in schools during 2009/10 (4)		Percentage of overall absence (5)
	Number	Percentage		Number	Percentage		Number	Percentage		Number	Percentage	
Overall absence rate:												
None	229,145	6.79	0.00	171,605	5.85	0.00	7,040	8.93	0.00	407,790	6.38	0.00
more than 0, up to and including 4%	1,530,445	45.36	18.63	1,158,870	39.49	12.27	24,220	30.72	6.95	2,713,535	42.48	15.06
more than 4%, up to and including 6%	535,635	15.88	15.46	440,055	14.99	11.07	10,040	12.74	6.63	985,735	15.43	12.98
more than 6%, up to and including 10%	610,305	18.09	27.15	555,640	18.93	21.71	13,855	17.57	14.27	1,179,805	18.47	24.04
more than 10%, up to and including 20%	387,440	11.48	28.72	444,780	15.16	29.88	13,740	17.43	24.79	845,960	13.24	29.25
more than 20%, up to and including 30%	52,540	1.56	6.17	87,310	2.97	9.91	4,300	5.45	13.09	144,150	2.26	8.27
more than 30%, up to and including 50%	18,380	0.54	2.62	47,555	1.62	7.99	3,060	3.88	14.00	68,995	1.08	5.67
more than 50%	10,150	0.30	1.25	28,990	0.99	7.17	2,580	3.28	20.27	41,720	0.65	4.74
Total	3,374,040	100.00	100.00	2,934,805	100.00	100.00	78,840	100.00	100.00	6,387,685	100.00	100.00

Source: School Census

(1) Includes middle schools as deemed.

(2) Includes maintained secondary schools, city technology colleges and academies (including all-through academies).

(3) Includes maintained and non-maintained special schools. Excludes general hospital schools.

(4) Number of pupil enrolments in schools from start of the school year up until 28 May 2010. Includes pupils on the school roll for at least one session who are aged between 5 and 15, excluding boarders. Some pupils may be counted more than once (if they moved schools during the school year or are registered in more than one school). See Technical Notes 13 to 15.

(5) The number of sessions missed due to overall absence in each band expressed as a percentage of the total number of sessions missed due to overall absence.

Totals may not appear to equal the sum of the component parts because numbers have been rounded to the nearest 5.

Table 4.1

**MAINTAINED PRIMARY, STATE-FUNDED SECONDARY AND SPECIAL SCHOOLS (1)(2)(3):
NUMBER OF SCHOOLS BY THE PERCENTAGE OF PERSISTENT ABSENTEES (4)(5)**

2009/10

England

	Maintained Primary Schools (1)		State-funded Secondary Schools (1)(2)		Special Schools (3)		Total	
	Number of schools	% of schools	Number of schools	% of schools	Number of schools	% of schools	Number of schools	% of schools
Percentage of school enrolments who are Persistent Absentees (6):								
None	4,688	27.62	15	0.45	71	6.95	4,774	22.39
more than 0, up to and including 3%	10,180	59.98	1,058	31.76	83	8.13	11,321	53.09
more than 3%, up to and including 6%	1,791	10.55	1,606	48.21	214	20.96	3,611	16.93
more than 6%, up to and including 9%	256	1.51	479	14.38	178	17.43	913	4.28
more than 9%, up to and including 12%	33	0.19	126	3.78	130	12.73	289	1.36
more than 12%, up to and including 15%	14	0.08	32	0.96	98	9.60	144	0.68
more than 15%, up to and including 20%	7	0.04	11	0.33	80	7.84	98	0.46
more than 20%	4	0.02	4	0.12	167	16.36	175	0.82
Total	16,973	100.00	3,331	100.00	1,021	100.00	21,325	100.00

Source: School Census

(1) Includes middle schools as deemed.

(2) Includes maintained secondary schools, city technology colleges and academies (including all-through academies).

(3) Includes maintained and non-maintained special schools. Excludes general hospital schools.

(4) Includes schools with at least one enrolment from the start of the school year up until 28 May 2010. Includes pupils on the school roll for at least one session who are aged between 5 and 15, excluding boarders. Some pupils may be counted in more than one school (if they moved schools during the school year or are registered at more than one school). See Technical Notes 13 to 15.

(5) Persistent Absentees are defined as having 64 or more sessions of absence (authorised and unauthorised) during the year, around 20 per cent overall absence rate.

(6) The number of Persistent Absentees expressed as a percentage of the total number of enrolments.

Table 5.1

MAINTAINED PRIMARY, STATE-FUNDED SECONDARY AND SPECIAL SCHOOLS (1)(2)(3):**PUPIL ABSENCE BY CHARACTERISTICS (4)**

2009/10

England

	Maintained Primary Schools (1)				State-funded Secondary Schools (1)(2)				Special Schools (3)				Total			
	Pupil enrolments in schools during 2009/10 (5)	Percentage of half days missed (6):			Pupil enrolments in schools during 2009/10 (5)	Percentage of half days missed (6):			Pupil enrolments in schools during 2009/10 (5)	Percentage of half days missed (6):			Pupil enrolments in schools during 2009/10 (5)	Percentage of half days missed (6):		
		Authorised absence	Unauthorised absence	Overall absence		Authorised absence	Unauthorised absence	Overall absence		Authorised absence	Unauthorised absence	Overall absence		Authorised absence	Unauthorised absence	Overall absence
Gender																
Boys	1,723,545	4.54	0.68	5.22	1,489,045	5.30	1.41	6.71	56,445	8.11	2.28	10.39	3,269,035	4.95	1.04	5.99
Girls	1,650,495	4.54	0.66	5.21	1,445,760	5.57	1.48	7.05	22,395	8.77	1.20	9.97	3,118,650	5.05	1.05	6.10
Total	3,374,040	4.54	0.67	5.21	2,934,805	5.43	1.45	6.88	78,840	8.30	1.98	10.27	6,387,685	5.00	1.04	6.04
Free School Meal (FSM) Eligibility																
Known to be eligible for and claiming FSM	638,165	5.69	1.52	7.22	458,290	6.94	3.35	10.28	26,865	8.81	2.73	11.54	1,123,320	6.28	2.30	8.58
Other pupils (7)	2,735,875	4.28	0.48	4.76	2,476,515	5.16	1.10	6.26	51,970	8.01	1.56	9.57	5,264,360	4.73	0.78	5.51
Total (7)	3,374,040	4.54	0.67	5.21	2,934,805	5.43	1.45	6.88	78,840	8.30	1.98	10.27	6,387,685	5.00	1.04	6.04
National Curriculum Year Group:																
1 and below	578,925	5.08	0.72	5.80	1,775	5.12	1.13	6.25	3,290	10.68	0.52	11.20	583,990	5.11	0.72	5.83
2	560,675	4.56	0.68	5.24	1,610	4.66	1.04	5.70	3,685	9.18	0.63	9.81	565,970	4.59	0.68	5.27
3	539,215	4.36	0.65	5.00	1,550	4.32	1.07	5.39	4,135	8.14	0.63	8.77	544,905	4.38	0.65	5.03
4	542,580	4.37	0.63	5.00	1,550	4.54	0.87	5.41	4,640	8.06	0.61	8.67	548,770	4.40	0.63	5.03
5	530,630	4.38	0.62	5.00	21,810	4.60	0.43	5.03	5,305	7.56	0.79	8.35	557,745	4.42	0.62	5.03
6	536,925	4.33	0.60	4.93	25,515	4.75	0.43	5.18	5,910	7.33	0.84	8.17	568,355	4.38	0.60	4.97
7	4,385	5.15	0.46	5.62	556,870	4.74	0.67	5.40	8,810	7.08	1.15	8.23	570,065	4.78	0.67	5.45
8	75	4.32	0.27	4.59	575,365	5.29	0.98	6.27	9,485	7.73	1.81	9.54	584,920	5.32	1.00	6.32
9	20	4.36	0.23	4.59	566,705	5.51	1.32	6.83	9,615	8.40	2.51	10.91	576,335	5.56	1.34	6.90
10	15	3.87	0.16	4.04	572,250	5.47	1.81	7.28	9,750	8.55	3.45	12.01	582,010	5.52	1.83	7.36
11	15	3.00	0.32	3.33	567,340	6.06	2.37	8.43	9,550	9.28	4.34	13.63	576,905	6.11	2.41	8.52
12 and above	0	0.00	0.00	0.00	775	6.89	4.58	11.47	30	9.90	0.18	10.08	805	7.00	4.41	11.42
Total (7)	3,374,040	4.54	0.67	5.21	2,934,805	5.43	1.45	6.88	78,840	8.30	1.98	10.27	6,387,685	5.00	1.04	6.04
First Language																
First language is known or believed to be other than English	554,685	4.90	1.06	5.95	343,045	4.58	1.42	6.01	8,445	10.87	1.26	12.13	906,175	4.83	1.20	6.03
First language is known or believed to be English	2,813,865	4.48	0.60	5.07	2,578,895	5.54	1.45	6.99	70,210	7.98	2.06	10.04	5,462,965	5.02	1.02	6.04
Total (7)	3,374,040	4.54	0.67	5.21	2,934,805	5.43	1.45	6.88	78,840	8.30	1.98	10.27	6,387,685	5.00	1.04	6.04
Special Educational Needs																
Statements of SEN	55,675	6.58	0.83	7.41	62,655	7.00	2.24	9.24	73,845	8.26	1.89	10.16	192,180	7.36	1.70	9.06
School Action Plus	254,785	5.69	1.16	6.85	219,075	7.69	4.19	11.88	1,650	10.35	6.60	16.95	475,510	6.62	2.57	9.19
School Action	468,100	5.23	1.08	6.31	415,935	6.27	2.29	8.56	225	8.25	8.44	16.69	884,260	5.72	1.65	7.37
No identified SEN	2,585,835	4.26	0.54	4.80	2,230,945	5.01	1.00	6.02	570	10.37	1.67	12.04	4,817,350	4.61	0.76	5.37
Total (7)	3,374,040	4.54	0.67	5.21	2,934,805	5.43	1.45	6.88	78,840	8.30	1.98	10.27	6,387,685	5.00	1.04	6.04

Source: School Census

(1) Includes middle schools as deemed.

(2) Includes maintained secondary schools, city technology colleges and academies (including all-through academies).

(3) Includes maintained and non-maintained special schools. Excludes general hospital schools.

(4) See Technical Note 14 for further information on how absence and pupil characteristic data have been linked.

(5) Number of enrolments in schools from start of the school year up until 28 May 2010. Includes pupils on the school roll for at least one session who are aged between 5 and 15, excluding boarders. Some pupils may be counted more than once (if they moved schools during the school year or are registered in more than one school). See Technical Notes 13 to 15.

(6) The number of sessions missed due to authorised/ unauthorised/ overall absence expressed as a percentage of the total number of possible sessions.

(7) Includes pupil enrolments for whom characteristic data were unclassified or missing. Total rates may be higher than rates for each subgroup.

Totals may not appear to equal the sum of the component parts because numbers have been rounded to the nearest 5.

Table 5.2
MAINTAINED PRIMARY, STATE-FUNDED SECONDARY AND SPECIAL SCHOOLS (1)(2)(3):
CHARACTERISTICS OF PERSISTENT ABSENTEES (4)(5)
 2009/10
 England

	Persistent Absentees (4)																			
	Maintained Primary Schools (1)					State-funded Secondary Schools (1)(2)					Special Schools (3)					Total				
	Pupil enrolments in schools during 2009/10 (6)		Percentage of half days missed (7):			Pupil enrolments in schools during 2009/10 (6)		Percentage of half days missed (7):			Pupil enrolments in schools during 2009/10 (6)		Percentage of half days missed (7):			Pupil enrolments in schools during 2009/10 (6)		Percentage of half days missed (7):		
	Number	Percentage (8)	Authorised absence	Unauthorised absence	Overall absence	Number	Percentage (8)	Authorised absence	Unauthorised absence	Overall absence	Number	Percentage (8)	Authorised absence	Unauthorised absence	Overall absence	Number	Percentage (8)	Authorised absence	Unauthorised absence	Overall absence
Gender																				
Boys	25,225	1.5	20.6	8.9	29.5	61,830	4.2	19.1	16.7	35.9	6,125	10.9	26.9	15.0	41.9	93,180	2.9	20.0	14.5	34.5
Girls	22,285	1.4	19.7	9.1	28.8	66,380	4.6	19.2	16.5	35.7	2,175	9.7	31.5	7.7	39.2	90,840	2.9	19.6	14.5	34.1
Total	47,510	1.4	20.2	9.0	29.2	128,210	4.4	19.1	16.6	35.8	8,300	10.5	28.1	13.1	41.2	184,020	2.9	19.8	14.5	34.3
Free School Meal (FSM) Eligibility																				
Known to be eligible for and claiming FSM	21,640	3.4	18.1	10.8	28.9	46,110	10.1	17.3	19.4	36.7	3,605	13.4	25.3	14.4	39.7	71,355	6.4	17.9	16.5	34.4
Other pupils (9)	25,870	0.9	22.0	7.4	29.4	82,095	3.3	20.2	15.1	35.3	4,695	9.0	30.3	12.0	42.3	112,665	2.1	21.0	13.2	34.2
Total (9)	47,510	1.4	20.2	9.0	29.2	128,210	4.4	19.1	16.6	35.8	8,300	10.5	28.1	13.1	41.2	184,020	2.9	19.8	14.5	34.3
National Curriculum Year Group:																				
1 and below	11,135	1.9	20.1	8.5	28.6	45	2.4	20.0	9.4	29.4	395	11.9	34.6	2.4	37.1	11,570	2.0	20.6	8.3	28.9
2	7,980	1.4	19.5	9.1	28.6	25	1.6	19.3	11.0	30.3	340	9.3	32.3	3.5	35.8	8,345	1.5	20.0	8.9	28.9
3	6,800	1.3	19.3	9.3	28.6	25	1.7	17.2	14.3	31.5	315	7.6	31.6	4.0	35.6	7,140	1.3	19.8	9.1	28.9
4	6,810	1.3	20.2	8.7	28.9	25	1.7	21.5	7.9	29.4	330	7.1	33.6	3.6	37.3	7,165	1.3	20.8	8.5	29.3
5	6,935	1.3	20.5	8.8	29.2	295	1.4	24.0	6.9	30.9	360	6.7	31.9	5.9	37.8	7,585	1.4	21.1	8.5	29.7
6	6,910	1.3	20.9	8.6	29.5	380	1.5	23.9	6.5	30.4	390	6.6	30.5	5.8	36.3	7,680	1.4	21.5	8.4	29.9
7	70	1.6	22.5	7.2	29.8	11,135	2.0	21.1	10.9	32.0	620	7.0	27.8	9.2	37.1	11,820	2.1	21.4	10.8	32.2
8	x	x	29.2	0.3	29.5	17,405	3.0	20.3	13.0	33.3	925	9.7	26.4	12.7	39.1	18,330	3.1	20.6	13.0	33.6
9	0	0.0	0.0	0.0	0.0	23,210	4.1	19.5	15.3	34.9	1,230	12.8	26.8	14.5	41.3	24,440	4.2	19.9	15.3	35.2
10	0	0.0	0.0	0.0	0.0	30,940	5.4	18.3	17.9	36.2	1,455	14.9	25.2	18.4	43.6	32,400	5.6	18.6	17.9	36.5
11	0	0.0	0.0	0.0	0.0	42,190	7.4	18.2	19.0	37.1	1,735	18.2	25.9	19.9	45.9	43,925	7.6	18.5	19.0	37.5
12 and above	0	0.0	0.0	0.0	0.0	85	11.2	18.6	15.2	33.8	x	x	100.0	0.0	100.0	90	10.9	19.6	15.0	34.6
Total (9)	47,510	1.4	20.2	9.0	29.2	128,210	4.4	19.1	16.6	35.8	8,300	10.5	28.1	13.1	41.2	184,020	2.9	19.8	14.5	34.3
First Language																				
First language is known or believed to be other than English	9,450	1.7	18.7	9.7	28.4	9,125	2.7	16.7	16.1	32.9	1,145	13.5	32.4	5.3	37.7	19,720	2.2	18.6	12.4	31.0
First language is known or believed to be English	37,975	1.3	20.5	8.8	29.4	118,470	4.6	19.3	16.7	36.0	7,135	10.2	27.4	14.3	41.7	163,585	3.0	20.0	14.7	34.7
Total (9)	47,510	1.4	20.2	9.0	29.2	128,210	4.4	19.1	16.6	35.8	8,300	10.5	28.1	13.1	41.2	184,020	2.9	19.8	14.5	34.3
Special Educational Needs																				
Statements of SEN	2,660	4.8	26.4	5.6	31.9	5,590	8.9	22.2	15.5	37.7	7,950	10.8	28.2	12.7	41.0	16,200	8.4	25.9	12.5	38.4
School Action Plus	9,085	3.6	21.2	9.7	30.9	30,970	14.1	18.9	20.8	39.8	290	17.7	24.5	21.5	45.9	40,350	8.5	19.5	18.3	37.8
School Action	11,570	2.5	18.8	10.2	28.9	29,060	7.0	17.9	17.4	35.3	35	15.0	16.0	24.0	40.0	40,665	4.6	18.1	15.3	33.5
No identified SEN	24,175	0.9	19.8	8.5	28.3	62,550	2.8	19.5	14.3	33.9	15	2.5	44.6	8.5	53.1	86,740	1.8	19.6	12.7	32.3
Total (9)	47,510	1.4	20.2	9.0	29.2	128,210	4.4	19.1	16.6	35.8	8,300	10.5	28.1	13.1	41.2	184,020	2.9	19.8	14.5	34.3

Source: School Census

- (1) Includes middle schools as deemed.
- (2) Includes maintained secondary schools, city technology colleges and academies (including all-through academies).
- (3) Includes maintained and non-maintained special schools. Excludes general hospital schools.
- (4) Persistent absentees are defined as having 64 or more sessions of absence (authorised and unauthorised) during the year, around 20 per cent overall absence rate.
- (5) See Technical Note 14 for further information on how absence and pupil characteristic data have been linked.
- (6) Number of enrolments in schools from start of the school year up until 28 May 2010. Includes pupils on the school roll for at least one session who are aged between 5 and 15, excluding boarders. Some pupils may be counted more than once (if they moved schools during the school year or are registered in more than one school). See Technical Notes 13 to 15.
- (7) The number of sessions missed due to authorised/unauthorised/overall absence expressed as a percentage of the total number of possible sessions.
- (8) The number of persistent absentee enrolments expressed as a percentage of the total number of enrolments with same characteristics.
- (9) Includes pupil enrolments for whom characteristic data were unclassified or missing. Total rates may be higher than rates for each subgroup.

Totals may not appear to equal the sum of the component parts because numbers have been rounded to the nearest 5.
 x - 1 or 2 enrolments, or a percentage based on 1 or 2 enrolments.

Table 5.3

MAINTAINED PRIMARY, STATE-FUNDED SECONDARY AND SPECIAL SCHOOLS (1)(2)(3):**PUPIL ABSENCE BY ETHNIC GROUP (4)**

2009/10

England

	Maintained Primary Schools (1)				State-funded Secondary Schools (1)(2)				Special Schools (3)				Total			
	Pupil enrolments in schools during 2009/10 (5)	Percentage of half days missed (6):			Pupil enrolments in schools during 2009/10 (5)	Percentage of half days missed (6):			Pupil enrolments in schools during 2009/10 (5)	Percentage of half days missed (6):			Pupil enrolments in schools during 2009/10 (5)	Percentage of half days missed (6):		
		Authorised absence	Unauthorised absence	Overall absence		Authorised absence	Unauthorised absence	Overall absence		Authorised absence	Unauthorised absence	Overall absence		Authorised absence	Unauthorised absence	Overall absence
White	2,635,320	4.52	0.59	5.11	2,388,830	5.60	1.46	7.06	63,135	7.98	2.03	10.01	5,087,285	5.07	1.02	6.09
White British	2,471,295	4.44	0.54	4.99	2,271,380	5.59	1.43	7.01	60,460	7.89	2.02	9.92	4,803,135	5.03	0.98	6.01
Irish	10,855	4.85	0.87	5.72	10,075	6.02	1.66	7.68	235	10.71	3.51	14.22	21,165	5.48	1.28	6.75
Traveller of Irish heritage	3,765	15.66	6.55	22.21	1,300	15.82	11.11	26.93	85	17.11	7.14	24.25	5,150	15.73	7.78	23.50
Gypsy/ Roma	8,955	11.42	5.61	17.04	4,140	10.39	9.60	19.99	190	15.10	8.51	23.61	13,285	11.15	6.94	18.09
Any other White background	140,450	5.29	1.07	6.36	101,935	5.54	1.88	7.42	2,165	9.32	1.33	10.64	244,550	5.43	1.41	6.84
Mixed	148,440	4.76	0.96	5.72	104,425	5.56	1.80	7.36	3,115	8.84	2.90	11.73	255,980	5.14	1.33	6.46
White and Black Caribbean	45,090	4.87	1.18	6.05	36,470	5.97	2.26	8.23	1,170	9.35	4.14	13.49	82,730	5.41	1.70	7.12
White and Black African	17,215	4.39	0.88	5.27	10,720	5.11	1.68	6.78	320	7.37	2.83	10.19	28,255	4.70	1.21	5.90
White and Asian	32,035	4.73	0.74	5.47	21,125	5.34	1.41	6.75	485	8.28	1.63	9.92	53,645	5.01	1.01	6.02
Any other Mixed background	54,100	4.81	0.92	5.73	36,115	5.41	1.61	7.02	1,140	8.97	2.20	11.17	91,350	5.10	1.21	6.31
Asian	326,895	5.12	0.98	6.10	225,985	4.71	1.17	5.89	6,320	11.45	1.25	12.70	559,200	5.02	1.06	6.08
Indian	85,285	4.58	0.61	5.19	66,470	4.15	0.71	4.85	1,150	9.51	0.76	10.27	152,905	4.42	0.66	5.08
Pakistani	137,550	5.46	1.17	6.63	87,220	5.36	1.50	6.86	3,350	11.93	1.47	13.39	228,120	5.50	1.30	6.80
Bangladeshi	56,455	5.54	1.25	6.79	37,290	4.77	1.48	6.25	840	12.63	1.66	14.28	94,585	5.30	1.34	6.64
Any other Asian background	47,605	4.59	0.75	5.34	35,005	4.14	0.93	5.07	980	11.34	0.78	12.12	83,595	4.47	0.83	5.30
Black	176,560	3.57	0.91	4.48	131,930	3.78	1.22	5.00	4,405	7.67	1.58	9.25	312,890	3.72	1.05	4.77
Black Caribbean	47,885	4.04	1.22	5.27	41,460	4.59	1.60	6.20	1,390	7.60	2.29	9.89	90,740	4.35	1.41	5.76
Black African	107,615	3.31	0.73	4.04	75,800	3.22	0.94	4.16	2,320	7.77	1.09	8.86	185,735	3.33	0.82	4.15
Any other Black background	21,060	3.85	1.05	4.90	14,670	4.29	1.60	5.88	690	7.47	1.81	9.28	36,420	4.09	1.29	5.38
Chinese	11,850	3.51	0.38	3.89	10,570	2.82	0.48	3.30	190	9.08	0.46	9.54	22,605	3.22	0.43	3.65
Any other ethnic group	51,845	4.81	1.18	5.99	35,580	4.58	1.52	6.10	785	10.62	1.61	12.23	88,210	4.77	1.32	6.09
Minority Ethnic Pupils (7)	879,610	4.83	1.04	5.86	625,940	4.83	1.48	6.31	17,485	9.71	1.79	11.50	1,523,035	4.88	1.23	6.11
All pupils (8)	3,374,040	4.54	0.67	5.21	2,934,805	5.43	1.45	6.88	78,840	8.30	1.98	10.27	6,387,685	5.00	1.04	6.04

Source: School Census

(1) Includes middle schools as deemed.

(2) Includes maintained secondary schools, city technology colleges and academies (including all-through academies).

(3) Includes maintained and non-maintained special schools. Excludes general hospital schools.

(4) See Technical Note 14 for further information on how absence and pupil characteristic data have been linked.

(5) Number of enrolments in schools from start of the school year up until 28 May 2010. Includes pupils on the school roll for at least one session who are aged between 5 and 15, excluding boarders. Some pupils may be counted more than once (if they moved schools during the school year or are registered in more than one school). See Technical Notes 13 to 15.

(6) The number of sessions missed due to authorised/ unauthorised/ overall absence expressed as a percentage of the total number of possible sessions.

(7) Pupils who have been classified according to their ethnic group, excluding White British.

(8) Includes pupil enrolments for whom information on ethnic group was unclassified or missing.

Totals may not appear to equal the sum of the component parts because numbers have been rounded to the nearest 5.

Table 5.4
MAINTAINED PRIMARY, STATE-FUNDED SECONDARY AND SPECIAL SCHOOLS (1)(2)(3)
PERSISTENT ABSENTEES BY ETHNIC GROUP (4)(5)
 2009/10
 England

	Persistent Absentees (4)																			
	Maintained Primary Schools (1)					State-funded Secondary Schools (1)(2)					Special Schools (3)					Total				
	Pupil enrolments in schools during 2009/10 (6)		Percentage of half days missed (7):			Pupil enrolments in schools during 2009/10 (6)		Percentage of half days missed (7):			Pupil enrolments in schools during 2009/10 (6)		Percentage of half days missed (7):			Pupil enrolments in schools during 2009/10 (6)		Percentage of half days missed (7):		
	Number	Percentage (8)	Authorised absence	Unauthorised absence	Overall absence	Number	Percentage (8)	Authorised absence	Unauthorised absence	Overall absence	Number	Percentage (8)	Authorised absence	Unauthorised absence	Overall absence	Number	Percentage (8)	Authorised absence	Unauthorised absence	Overall absence
White	36,275	1.4	20.6	8.8	29.4	111,585	4.7	19.3	16.7	36.0	6,420	10.2	27.4	14.2	41.6	154,285	3.0	20.0	14.7	34.7
White British	30,265	1.2	20.4	8.4	28.7	104,895	4.6	19.4	16.6	36.0	6,040	10.0	27.2	14.4	41.7	141,200	2.9	19.9	14.7	34.7
Irish	240	2.2	19.9	10.5	30.3	570	5.6	19.3	17.2	36.6	45	18.7	32.9	15.5	48.3	850	4.0	20.1	15.3	35.4
Traveller Of Irish Heritage	1,075	28.6	29.0	12.1	41.1	480	36.8	27.1	22.3	49.4	30	36.8	30.1	15.5	45.6	1,585	30.8	28.4	15.3	43.7
Gypsy / Roma	1,860	20.8	24.0	12.5	36.5	1,160	28.0	17.4	22.0	39.4	70	36.7	26.3	18.6	44.9	3,090	23.3	21.6	16.3	37.8
Any Other White Background	2,835	2.0	18.6	10.1	28.7	4,485	4.4	17.0	17.7	34.7	235	10.9	29.6	7.6	37.2	7,555	3.1	18.0	14.5	32.5
Mixed	2,750	1.9	18.2	10.4	28.6	5,315	5.1	17.8	17.9	35.8	395	12.7	27.3	16.8	44.1	8,460	3.3	18.4	15.4	33.8
White and Black Caribbean	1,070	2.4	17.8	11.1	28.9	2,435	6.7	17.6	18.1	35.7	180	15.5	26.0	20.1	46.1	3,685	4.5	18.1	16.2	34.2
White and Black African	245	1.4	18.1	9.8	27.9	475	4.4	17.2	18.5	35.8	30	10.0	26.4	21.1	47.5	755	2.7	17.9	15.8	33.7
White and Asian	490	1.5	18.4	10.2	28.6	845	4.0	18.1	17.4	35.4	50	10.7	27.0	11.2	38.2	1,385	2.6	18.5	14.6	33.1
Any Other Mixed Background	945	1.7	18.5	10.0	28.5	1,565	4.3	18.2	17.8	36.0	130	11.5	29.5	13.4	42.9	2,640	2.9	18.9	14.8	33.7
Asian	5,375	1.6	19.2	8.2	27.4	5,020	2.2	18.0	13.7	31.7	850	13.4	33.0	4.8	37.8	11,245	2.0	19.7	10.3	30.1
Indian	755	0.9	20.6	6.0	26.5	950	1.4	19.6	11.7	31.3	110	9.6	33.0	3.9	36.9	1,810	1.2	20.8	8.8	29.6
Pakistani	2,910	2.1	18.9	8.5	27.4	2,535	2.9	18.0	13.9	31.9	465	13.9	32.8	5.2	38.0	5,915	2.6	19.6	10.6	30.2
Bangladeshi	1,135	2.0	18.8	8.5	27.3	940	2.5	16.7	14.9	31.6	145	17.5	31.5	6.0	37.6	2,220	2.3	18.8	11.0	29.8
Any Other Asian Background	575	1.2	19.8	8.4	28.1	600	1.7	17.9	13.7	31.7	125	12.8	35.8	2.6	38.4	1,300	1.6	20.5	10.3	30.8
Black	1,745	1.0	18.0	11.7	29.7	3,055	2.3	18.0	16.0	33.9	400	9.1	28.3	10.3	38.6	5,200	1.7	18.8	14.1	32.9
Caribbean	800	1.7	16.2	12.9	29.1	1,575	3.8	17.9	16.0	33.9	145	10.5	26.6	13.7	40.4	2,520	2.8	17.9	14.9	32.8
African	670	0.6	20.4	10.1	30.5	985	1.3	18.7	14.7	33.3	200	8.5	29.8	6.8	36.6	1,855	1.0	20.5	12.2	32.7
Any Other Black Background	275	1.3	17.7	11.8	29.5	495	3.4	16.8	18.4	35.2	60	8.4	27.4	13.4	40.8	825	2.3	17.9	15.9	33.7
Chinese	60	0.5	23.3	5.7	29.0	85	0.8	20.3	13.3	33.6	15	8.5	37.9	3.0	41.0	165	0.7	23.2	9.4	32.7
Any other ethnic group	865	1.7	18.3	11.4	29.7	1,020	2.9	17.1	16.4	33.5	100	13.0	32.7	7.7	40.4	1,985	2.2	18.4	13.8	32.2
Minority Ethnic Pupils (9)	16,805	1.9	19.9	10.1	30.0	21,190	3.4	17.9	16.8	34.7	2,150	12.3	30.5	9.2	39.7	40,145	2.6	19.4	13.6	33.0
All pupils (10)	47,510	1.4	20.2	9.0	29.2	128,210	4.4	19.1	16.6	35.8	8,300	10.5	28.1	13.1	41.2	184,020	2.9	19.8	14.5	34.3

Source: School Census

- (1) Includes middle schools as deemed.
 (2) Includes maintained secondary schools, city technology colleges and academies (including all-through academies).
 (3) Includes maintained and non-maintained special schools. Excludes general hospital schools.
 (4) Persistent Absentees are defined as having 64 or more sessions of absence (authorised and unauthorised) during the year, around 20 per cent overall absence rate.
 (5) See Technical Note 14 for further information on how absence and pupil characteristic data have been linked.
 (6) Number of enrolments in schools from start of the school year up until 28 May 2010. Includes pupils on the school roll for at least one session who are aged between 5 and 15, excluding boarders. Some pupils may be counted more than once (if they moved schools during the school year or are registered in more than one school). See Technical Notes 13 to 15.
 (7) The number of sessions missed due to authorised/unauthorised/overall absence expressed as a percentage of the total number of possible sessions of Persistent Absentees.
 (8) The number of Persistent Absentee enrolments expressed as a percentage of the total number of pupil enrolments of same ethnic origin.
 (9) Pupils who have been classified according to their ethnic group, excluding White British.
 (10) Includes enrolments for whom information on ethnic group was unclassified or missing.

Totals may not appear to equal the sum of the component parts because numbers have been rounded to the nearest 5.

Table 5.5

MAINTAINED PRIMARY, STATE-FUNDED SECONDARY AND SPECIAL SCHOOLS(1)(2)(3):**ABSENCE RATES BY TYPE OF SPECIAL EDUCATIONAL NEED (4)(5)**

2009/10

England

	Pupils at School Action Plus or with statements of SEN (5)					
	Pupil enrolments in schools during 2009/10 (7)	Percentage of half days missed (6):			Persistent absentees	
		Authorised absence	Unauthorised absence	Overall absence	Number of pupil enrolments who are Persistent Absentees (8)	Percentage of pupil enrolments who are Persistent absentees
Specific Learning Difficulty	78,045	6.10	1.69	7.79	4,395	5.6
Moderate Learning Difficulty	165,695	6.38	2.25	8.62	11,975	7.2
Severe Learning Difficulty	22,590	7.21	0.95	8.16	1,485	6.6
Profound & Multiple Learning Difficulty	6,835	13.67	0.70	14.38	1,390	20.3
Behaviour, Emotional & Social Difficulties	159,155	7.88	4.41	12.29	24,340	15.3
Speech, Language and Communications Needs	96,590	5.46	1.10	6.55	3,200	3.3
Hearing Impairment	13,410	6.26	1.09	7.34	570	4.3
Visual Impairment	7,410	6.72	1.12	7.84	385	5.2
Multi- Sensory Impairment	750	8.07	0.70	8.77	50	6.8
Physical Disability	22,775	9.46	0.95	10.41	2,505	11.0
Autistic Spectrum Disorder	50,145	5.95	0.87	6.81	2,275	4.5
Other Difficulty/Disability	29,460	7.78	2.80	10.58	3,425	11.6
Total (9)	667,685	6.83	2.31	9.15	56,550	8.5

Source: School Census

(1) Includes middle schools as deemed.

(2) Includes maintained secondary schools, city technology colleges and academies (including all-through academies).

(3) Includes maintained and non-maintained special schools. Excludes general hospital schools.

(4) See Technical Note 14 for further information on how absence and pupil characteristic data have been linked.

(5) Pupils at School Action Plus and those pupils with a statement of SEN provided information on their primary need, and if appropriate, their secondary need.

Information on primary need only is given here.

(6) The number of sessions missed due to authorised/ unauthorised/ overall absence expressed as a percentage of the total number of possible sessions.

(7) Number of enrolments in schools from start of the school year up until 28 May 2010. Includes pupils on the school roll for at least one session who are aged between 5 and 15, excluding boarders. Some pupils may be counted more than once (if they moved schools during the school year or are registered in more than one school). See Technical Notes 13 to 15.

(8) Persistent Absentees are defined as having 64 or more sessions of absence (authorised and unauthorised) during the year, around 20 per cent overall absence rate.

(9) Includes pupil enrolments for whom information on type of special educational need was unclassified or missing.

Totals may not appear to equal the sum of component parts because numbers have been rounded to the nearest 5.

Table 6.1

ANALYSIS OF ACADEMIES WITH RESULTS IN BOTH 2008/09 AND 2009/10 (1)**PUPIL ABSENCE**

2008/09 and 2009/10

England

	Academies open in 2008/09 and 2009/10		
	2008/09	2009/10	Difference
Total number of possible sessions	31,546,735	33,030,235	4.7% (2)
Total sessions missed	2,643,725	2,513,725	-4.9% (2)
of which:			
due to authorised absence	1,916,885	1,819,065	-5.1% (2)
due to unauthorised absence	726,835	694,660	-4.4% (2)
Percentage of sessions missed (3)	8.38	7.61	-0.77 ppt (4)
of which:			
due to authorised absence	6.08	5.51	-0.57 ppt (4)
due to unauthorised absence	2.30	2.10	-0.2 ppt (4)
Total number of enrolments (5)	111,085	113,025	1.7% (2)
Number of pupil enrolments who are Persistent Absentees (6)	7,845	6,715	-14.4% (2)
Percentage of pupil enrolments who are Persistent Absentees (6)	7.1	5.9	-1.1 ppt (4)

Source: School Census

(1) Includes only those 133 academies which opened before the end of the 2008/09 academic year.

(2) Percentage change compared with the same reporting period for the previous year.

(3) The number of sessions missed expressed as a percentage of the total number of possible sessions.

(4) Change in percentage points compared with the same reporting period for the previous year.

(5) Number of pupil enrolments in schools from start of the school year up until 22 May 2009 (for 2008/09) or 28 May 2010 (for 2009/10).

Includes pupils on the school roll for at least one session who are aged between 5 and 15, excluding boarders. Some pupils may be counted more than once (if they moved schools during the school year or are registered in more than one school). See Technical Notes 13 to 15.

(6) Persistent Absentees are defined as having 64 or more sessions of absence (authorised and unauthorised) during the year, around 20 per cent overall absence rate.

Totals may not appear to equal the sum of the component parts because numbers have been rounded to the nearest 5.

Table 6.2
ALL ACADEMIES (1)
PUPIL ABSENCE
 2008/09 and 2009/10
 England

	2008/09						2009/10					
	Percentage of half days missed (2):			Persistent absentees (3)			Percentage of half days missed (2):			Persistent absentees (3)		
	Number of schools	Authorised absence	Unauthorised absence	Overall absence	Number of pupil enrolments who are Persistent Absentees (4)	Percentage of pupil enrolments who are Persistent absentees (4)	Number of schools	Authorised absence	Unauthorised absence	Overall absence	Number of pupil enrolments who are Persistent Absentees (4)	Percentage of pupil enrolments who are Persistent absentees (4)
Academies by cohort												
2002/03 openers (5)	3	6.14	2.33	8.47	210	6.7	3	6.30	2.56	8.86	245	8.0
2003/04 openers (5)	9	5.29	2.09	7.38	500	5.4	9	4.41	2.74	7.15	520	5.5
2004/05 openers (5)	5	4.97	2.29	7.26	305	6.1	5	5.12	2.30	7.41	295	5.9
2005/06 openers (5)	10	5.30	1.64	6.93	445	5.0	10	5.24	1.66	6.90	475	5.2
2006/07 openers (5)	20	6.06	2.74	8.81	1,300	8.0	20	5.38	2.82	8.20	1,265	7.5
2007/08 openers (5)	36	6.16	2.11	8.27	1,875	6.6	36	5.44	1.81	7.25	1,430	4.7
2008/09 openers (5)	50	6.53	2.47	9.00	3,210	8.0	50	5.93	1.91	7.83	2,490	6.3
2009/10 openers (5)	70	5.80	3.30	9.11	5,175	8.2
All academies	133	6.08	2.30	8.38	7,845	7.1	203	5.61	2.52	8.14	11,890	6.7

Source: School Census

(1) Includes all academies open by September 2010, academies are shown by date of opening.

(2) The number of sessions missed due to authorised/unauthorised/overall absence expressed as a percentage of the total number of possible sessions.

(3) Persistent Absentees are defined as having 64 or more sessions of absence (authorised and unauthorised) during the year, around 20 per cent overall absence rate.

(4) Number of pupil enrolments in schools from the start of the school year up until 22 May 2009 (for 2008/09) or 28 May 2010 (for 2009/10). Includes pupils on the school roll for at least one session who are aged between 5 and 15, excluding boarders. Some pupils may be counted more than once (if they moved schools during the school year or are registered in more than one school). See Technical Notes 13 to 15.

(5) These figures refer to sponsor-led academies - those schools set up to replace one or more existing schools or to meet a need for additional school places.

. Not applicable

Totals may not appear to equal the sum of the component parts because numbers have been rounded to the nearest 5.

Table 7.1

**MAINTAINED PRIMARY, STATE-FUNDED SECONDARY AND SPECIAL SCHOOLS (1)(2)(3) :
PUPIL ABSENCE BY IDACI DECILE OF PUPIL RESIDENCE (4)(5)(6)**

2008/09 and 2009/10

England

IDACI decile (4)(5)	2008/09					2009/10				
	Number of enrolments during 2008/09 (6)(7)	Percentage of half days missed (8):			Percentage of persistent absentees (9) (10)	Number of enrolments during 2009/10 (6)(7)	Percentage of half days missed (8):			Percentage of persistent absentees (9) (10)
Authorised absence		Unauthorised absence	Overall absence	Authorised absence			Unauthorised absence	Overall absence		
0 - 10 % most deprived	802,815	5.95	2.06	8.02	5.7	809,315	5.29	1.93	7.22	4.6
10 - 20 %	710,970	5.74	1.62	7.36	4.7	716,440	5.48	1.67	7.16	4.4
20 - 30 %	646,060	5.63	1.35	6.98	4.2	650,675	5.43	1.39	6.82	3.9
30 - 40 %	608,270	5.43	1.11	6.54	3.6	609,225	5.32	1.12	6.44	3.4
40 - 50 %	589,100	5.28	0.91	6.19	3.1	593,055	5.12	0.90	6.02	2.8
50 - 60 %	566,250	5.08	0.76	5.84	2.7	579,930	4.94	0.72	5.66	2.3
60 - 70 %	564,310	4.87	0.62	5.49	2.2	571,195	4.75	0.60	5.35	2.0
70 - 80 %	572,480	4.66	0.53	5.19	1.9	575,775	4.53	0.51	5.04	1.7
80 - 90 %	589,670	4.50	0.46	4.95	1.6	573,490	4.38	0.42	4.80	1.4
90 - 100 % least deprived	607,520	4.27	0.37	4.64	1.3	561,040	4.13	0.35	4.47	1.1

Source: National Pupil Database

(1) Includes middle schools as deemed.

(2) Includes maintained secondary schools, city technology colleges and academies (including all-through academies).

(3) Includes maintained and non-maintained special schools. Excludes general hospital schools.

(4) Income Deprivation Affecting Children Indices based on pupil postcode. Each SOA in England is given a score which ranks it between 1 and 32482, 1 being the most deprived.

(5) IDACI bands for 2008 to 2010 are based on 2007 IDACI scores. Care should be taken when comparing to IDACI tables for 2007 and earlier which are based on 2004 IDACI scores.

(6) The residency of 145,754 pupils in 2009/10 and 149,356 in 2008/09 is unknown due to missing or invalid postcode information. These pupils are excluded from the figures in the table.

(7) Number of pupil enrolments in schools from the start of the school year up until 22 May 2009 (for 2008/09) or 28 May 2010 (for 2009/10). Includes pupils on the school roll for at least one session who are aged between 5 and 15, excluding boarders. Some pupils may be counted more than once (if they moved schools during the school year or are registered in more than one school). See Technical Notes 13 to 15.

(8) The number of sessions missed due to authorised/unauthorised/overall absence expressed as a percentage of the total number of possible sessions.

(9) Persistent Absentees are defined as having 64 or more sessions of absence (authorised and unauthorised) during the year, around 20 per cent overall absence rate.

(10) Number of persistent absentees expressed as a percentage of the total number of enrolments.

Totals may not appear to equal the sum of the component parts because numbers have been rounded to the nearest 5.