

MOD Cadet Forces Personnel Statistics

Statistical Release

1 April 2011

Published 2012



MINISTRY OF DEFENCE

MOD Sponsored Cadet Forces Report - 1 April 2011

The Ministry of Defence Sponsored Cadet Forces comprise the Combined Cadet Force and the Community Cadet Forces (Sea Cadet Corps, Army Cadet Force and Air Training Corps). They aim to provide challenging and enjoyable activities so that young people may develop powers of leadership by means of training to promote the qualities of responsibility, self reliance, resourcefulness, endurance and perseverance.

The Cadet Force are not part of the Armed Forces although some Cadet Force Officers are members of the Reserve Forces, and others are granted honorary Officer status. Despite this, no member of the Cadet Forces has any liability for military service or compulsory training in the Regular or Reserve Forces.

The tables present information on the strength of the Combined Cadet Force and the Community Cadet Forces by age and sex. It sources data from DCDS PERS RF&C and the individual single services.

Key Points and Trends

At 1 April 2011:

- The Community Cadet Forces strength was 93,010 and the Combined Cadet Force strength was 44,890 (exc Cadet Forces Adult Volunteers). The Army Cadet Force had the largest proportion of cadets, followed by the Air Training Corp and then the Sea Cadet Corps.
- The Community Cadet Forces Instructor strength was 24,510, up 2,280 since April 2010. The Cadet Force Instructor strength decreased by 3.3 per cent to 2,150.

Contents	Page
Key Points and Trends	1
Commentary	2
Total Cadet Force Strengths	
Table 1a Strength of Community Cadet Forces, at 1 April each year	4
Table 1b Strength of the Combined Cadet Force, at 1 April each year	4
Community Cadet Forces Strengths	
Table 2 Strength of Community Cadet Forces Cadets by Service, age and sex	5
Graph 2.1 Sea Cadet Force by age and sex at 1 April 2011	6
Graph 2.2 Army Cadet Force by age and sex at 1 April 2011	6
Graph 2.3 Air Training Corps by age and sex at 1 April 2011	6
Combined Cadet Force Strengths	
Table 3 Strength of Combined Cadet Force Cadets by Service, age and sex	7
Graph 3.1 Naval Service Cadets by age and sex at 1 April 2011	8
Graph 3.2 Army Cadets by age and sex at 1 April 2011	8
Graph 3.3 Royal Air Force Cadets by age and sex at 1 April 2011	8
Cadet Force Adult Volunteer Strengths	
Table 4 Community Cadet Forces Adult Volunteers	9
Table 5 Combined Cadet Force Adult Volunteers	9

Further Information

Service Personnel Enquiries

DASA Quad Service

Tel: 020-780-78896

Email: quadservice@dasa.mod.uk

General Public Enquiries

www.dasa.mod.uk

1. Commentary

Key changes

1. At 1 April 2011 there were 93,010 cadets and 24,510 Adult Volunteers in the Community Cadet Forces, and 44,890 cadets and 2,150 Adult Volunteers in the Combined Cadet Force. This continues the long term increase in the number of Cadet Forces personnel since 2001.
2. The Community Cadet Forces comprised 93,010 cadets at 1 April 2011, an increase of 6.3 per cent since 2001. The Combined Cadet Force increased by 10.1 per cent in the same time period, from 40,780 to 44,890.

Community Cadet Force at 1 April 2011

3. At 1 April 2011 there were 93,010 Community Cadet Force cadets. The Army Cadet Force had the largest proportion of cadets (48.3 per cent), followed by the Air Training Corp (37.9 per cent) and then the Sea Cadet Corps (13.9 per cent).
4. Of the 93,010 Community Cadet Force cadets, 68,600 were male (73.8 per cent) and 24,410 female (26.2 per cent). The Sea Cadet Corps had the highest proportion of female cadets (33.7 per cent), followed by the Army Cadet Force (25.2 per cent) and then the Air Training Corp (24.8 per cent).
5. The largest percentage of Community Cadet Force Cadets were 14 years old (23.5 per cent). Male cadets were generally of a younger age than females, with proportionally more males aged 10-14 years old (53 per cent), while proportionally more female cadets were aged 15-19 years (52.1 per cent).
6. Due to the age restrictions imposed by the individual services on entry and exit to the cadet forces, the age profile of each service is different. The Sea Cadet Corp is the only service to allow cadets aged 10 and 11 years old, who represent 27.4% of all Sea Cadets. Unlike the Sea Cadet Corps where the upper age limit is the 18th birthday, the Army Cadet Force and Air Training Corp allow 18 year olds and over, who represent 3.9% and 5.5% of the respective cadet force.

Combined Cadet Force at 1 April 2011

7. The Combined Cadet Force strength was 44,890 at 1 April 2011, up 760 since 1 April 2010. The Army Sections have the largest proportion of cadets (67.3 per cent), followed by the RAF Sections (20.6 per cent) and then the Naval Service Sections (12.1 per cent).
8. The number of female cadets in the Combined Cadet Force was 12,500 (28 per cent of the Combined Cadet Force) at 1 April 2011, 2 per cent higher than in the Community Cadet Forces.
9. The largest proportion of cadets in the Combined Cadet Force are aged 14 (24 per cent) and 15 (27.9 per cent). The Army has the highest proportion of cadets aged 16 or less (82 per cent) and the lowest proportion of cadets aged 18 and over (6 per cent). Conversely, the Naval Service has the lowest proportion of personnel aged 16 or less (75 per cent) and the highest proportion aged 18 and over (8 per cent).

Cadet Force Adult Volunteers (CFAV) at 1 April 2011

10. The Community Cadet Forces CFAV strength was 24,510 at 1 April 2011, up 2,280 (10.3 per cent) since 1 April 2010. The Combined Cadet Force CFAV strength on the other hand experienced a decrease of 3.3 per cent to 2,150 at 1 April 2011.

2. Symbols and Conventions

Symbols

- * not applicable
- .. not available
- zero or rounded to zero

Italic figures are used for percentages and other rates, except where otherwise indicated.

Rounding

Where rounding has been used, totals and sub-totals have been rounded separately and so may not equal the sums of their rounded parts.

When rounding to the nearest 10, numbers ending in “5” have been rounded to the nearest multiple of 20 to prevent systematic bias.

3. Feedback

DASA welcome feedback on our statistical products. If you have any comments or questions about this publication or about DASA statistics in general, you can contact us as follows:

Contact DASA (Quad Service)

Tel. 0207 217 8896

Email dasa-quad-enquiries@mod.uk

Visit our website at www.dasa.mod.uk and complete the feedback form.

Table 1a- Strength of the Community Cadet Forces, at 1 April each year

		Number						
	2001	2005	2006	2007	2008	2009	2010	2011
Community Cadet Forces¹	108 210	108 530	..	105 760	105 270	106 930	111 090 II	117 520
Cadets	87 520	87 800	..	84 790	84 250	85 290	88 860 II	93 010
Male Cadets	72 370	63 080	..	60 240	60 300	61 600	63 720 II	68 600
Female Cadets	15 150	24 720	..	24 550	23 940	23 690	25 140 II	24 410
Cadet Force Adult Volunteer	20 690	20 740	..	20 980	21 020	21 640	22 230	24 510
Male Adult Volunteer	15 780	15 380	..	15 690	15 550	16 000	16 320	17 610
Female Adult Volunteer	4 920	5 360	..	5 280	5 480	5 640	5 910	6 900
Sea Cadet Corps¹	18 190	16 350	..	12 550	12 750	12 950	11 910 II	18 510
Cadets	13 770	12 280	..	9 540	9 630	9 410	8 310 II	12 910
Male Cadets	8 960	7 730	..	6 000	6 110	6 140	5 500 II	8 550
Female Cadets	4 810	4 550	..	3 540	3 520	3 260	2 810 II	4 360
Cadet Force Adult Volunteer	4 420	4 070	..	3 010	3 110	3 540	3 600	5 600
Male Adult Volunteer	2 970	2 690	..	2 060	2 110	2 420	2 470	3 640
Female Adult Volunteer	1 450	1 380	..	950	1 010	1 120	1 130	1 960
Army Cadet Force	48 260	52 010	52 790	53 060	53 190	54 260	56 450	53 330
Cadets	40 570	44 050	44 390	44 720	44 800	45 930	46 990	44 890
Male Cadets	30 230	31 950	6 270	31 800	32 260	33 420	33 540	33 560
Female Cadets	10 340	12 090	2 130	12 920	12 550	12 500	13 460	11 330
Cadet Force Adult Volunteer	7 690	7 960	8 400	8 340	8 380	8 330	9 450	8 440
Male Adult Volunteer	5 980	5 980	31 590	6 160	6 160	6 100	6 830	6 180
Female Adult Volunteer	1 710	1 990	12 800	2 180	2 220	2 220	2 620	2 270
Air Training Corps	42 020	40 170	41 150	40 150	39 340	39 720	42 740	45 670
Cadets	33 180	31 470	10 980	30 520	29 810	29 950	33 560	35 210
Male Cadets	33 180	23 400	8 500	22 440	21 940	22 030	24 690	26 480
Female Cadets	-	8 070	2 480	8 080	7 870	7 920	8 870	8 730
Cadet Force Adult Volunteer	8 840	8 700	30 170	9 620	9 530	9 770	9 180	10 460
Male Adult Volunteer	6 830	6 720	22 500	7 460	7 280	7 470	7 020	7 790
Female Adult Volunteer	1 750	1 980	7 660	2 160	2 250	2 300	2 160	2 670

Source: DCDS Pers (RF&C), Single Services

1. From 1 April 2011, Sea Cadet Corps figures include juniors (10-11 year olds) whereas they were previously excluded.

Table 1b- Strength of the Combined Cadet Force, at 1 April each year

		Number						
	2001	2005	2006	2007	2008	2009	2010	2011
Combined Cadet Force	42 810	44 600	44 190	44 780	45 540	46 920	46 210	47 040
Cadets	40 780	42 460	42 030	42 590	43 320	44 720	44 130	44 890
Male Cadets	31 840	31 840	31 020	31 680	31 990	32 610	32 220	32 390
Female Cadets	8 940	10 610	11 020	10 910	11 330	12 110	11 910	12 500
Cadet Force Adult Volunteer	2 020	2 150	2 160	2 190	2 220	2 200	2 080	2 150
Male Adult Volunteer	1 670	1 690	1 700	1 710	1 700	1 720	1 520	1 560
Female Adult Volunteer	360	460	460	480	520	480	570	600
Naval Service	5 620	5 560	5 420	5 640	5 870	6 000	5 990	5 710
Cadets	5 300	5 320	5 250	5 120	5 330	5 560	5 670	5 660
Male Cadets	3 940	3 820	3 600	3 780	3 800	3 870	3 860	3 560
Female Cadets	1 360	1 430	1 520	1 550	1 760	1 800	1 800	1 850
Cadet Force Adult Volunteer	310	310	300	310	310	320	340	300
Male Adult Volunteer	250	230	230	240	240	240	240	220
Female Adult Volunteer	60	80	80	70	80	80	90	80
Army	27 100	28 910	28 910	28 850	29 540	30 590	29 970	31 440
Cadets	25 840	27 580	27 560	27 510	28 170	29 180	28 780	30 220
Male Cadets	20 120	20 620	20 200	20 460	20 820	21 230	21 010	21 850
Female Cadets	5 720	6 960	7 360	7 050	7 350	7 950	7 760	8 370
Cadet Force Adult Volunteer	1 260	1 330	1 350	1 340	1 380	1 410	1 200	1 220
Male Adult Volunteer	1 080	1 090	1 100	1 080	1 080	1 100	890	900
Female Adult Volunteer	190	240	250	260	300	310	310	320
Royal Air Force	10 090	10 130	9 860	10 290	10 120	10 330	10 240	9 890
Cadets	9 640	9 630	9 350	9 750	9 600	9 860	9 700	9 260
Male Cadets	7 780	7 410	7 210	7 440	7 380	7 510	7 350	6 980
Female Cadets	1 860	2 220	2 140	2 310	2 220	2 350	2 350	2 280
Cadet Force Adult Volunteer	450	510	510	540	530	460	550	630
Male Adult Volunteer	340	370	380	400	380	380	380	440
Female Adult Volunteer	110	140	130	140	140	80	160	190

Source: DCDS Pers (RF&C), Single Services

Table 2 - Strength of Community Cadet Forces Cadets¹ by Service, age and sex, at 1 April 2011

	Number			Percentage in category		
	Total	Male	Female	Total	Male	Female
Community Cadet Forces	93 010	68 600	24 410	100%	100%	100%
10	1 160	770	390	1.2%	1.1%	1.6%
11	1 990	1 350	640	2.1%	2.0%	2.6%
12	5 450	4 130	1 320	5.9%	6.0%	5.4%
13	17 650	13 690	3 960	19.0%	20.0%	16.2%
14	21 820	16 430	5 390	23.5%	24.0%	22.1%
15	18 370	13 340	5 030	19.8%	19.4%	20.6%
16	13 540	9 670	3 880	14.6%	14.1%	15.9%
17	8 290	5 840	2 450	8.9%	8.5%	10.0%
18	3 680	2 620	1 060	4.0%	3.8%	4.4%
19	1 060	760	290	1.1%	1.1%	1.2%
Sea Cadet Corps²	12 910	8 550	4 360	100%	100%	100%
10	1 160	770	390	9.0%	9.0%	9.0%
11	1 990	1 350	640	15.4%	15.8%	14.7%
12	1 940	1 300	640	15.0%	15.2%	14.8%
13	2 210	1 500	710	17.1%	17.5%	16.3%
14	2 070	1 380	690	16.0%	16.1%	15.8%
15	1 620	1 050	570	12.5%	12.3%	13.0%
16	1 130	700	430	8.7%	8.2%	9.8%
17	790	510	280	6.1%	5.9%	6.5%
<i>of which</i>						
Sea Cadets	11 530	7 340	4 190	100%	100%	100%
10	1 160	770	390	10.1%	10.5%	9.4%
11	1 990	1 350	640	17.3%	18.4%	15.2%
12	1 930	1 290	640	16.8%	17.6%	15.3%
13	1 940	1 250	690	16.8%	17.0%	16.5%
14	1 690	1 040	650	14.7%	14.1%	15.6%
15	1 280	760	520	11.1%	10.4%	12.4%
16	880	490	390	7.7%	6.7%	9.3%
17	650	380	270	5.6%	5.2%	6.3%
Royal Marine Cadets	1 380	1 220	160	100%	100%	100%
12	10	10	-	0.4%	0.5%	-
13	270	240	20	19.3%	20.2%	13.0%
14	380	340	40	27.7%	28.3%	22.8%
15	340	290	50	24.5%	23.8%	29.6%
16	250	210	40	17.9%	17.2%	22.8%
17	140	120	20	10.2%	10.0%	11.7%
Army Cadet Force³	44 890	33 560	11 330	100%	100%	100%
12	3 510	2 830	680	7.8%	8.4%	6.0%
13	9 630	7 580	2 050	21.5%	22.6%	18.1%
14	10 590	8 040	2 550	23.6%	24.0%	22.5%
15	8 830	6 400	2 430	19.7%	19.1%	21.5%
16	6 600	4 730	1 870	14.7%	14.1%	16.5%
17	3 980	2 760	1 210	8.9%	8.2%	10.7%
18	1 750	1 220	530	3.9%	3.6%	4.7%
Air Training Corps⁴	35 210	26 480	8 730	100%	100%	100%
13	5 810	4 610	1 200	16.5%	17.4%	13.8%
14	9 160	7 010	2 140	26.0%	26.5%	24.5%
15	7 920	5 900	2 030	22.5%	22.3%	23.2%
16	5 810	4 230	1 580	16.5%	16.0%	18.1%
17	3 520	2 570	950	10.0%	9.7%	10.9%
18	1 940	1 400	530	5.5%	5.3%	6.1%
19	1 060	760	290	3.0%	2.9%	3.3%

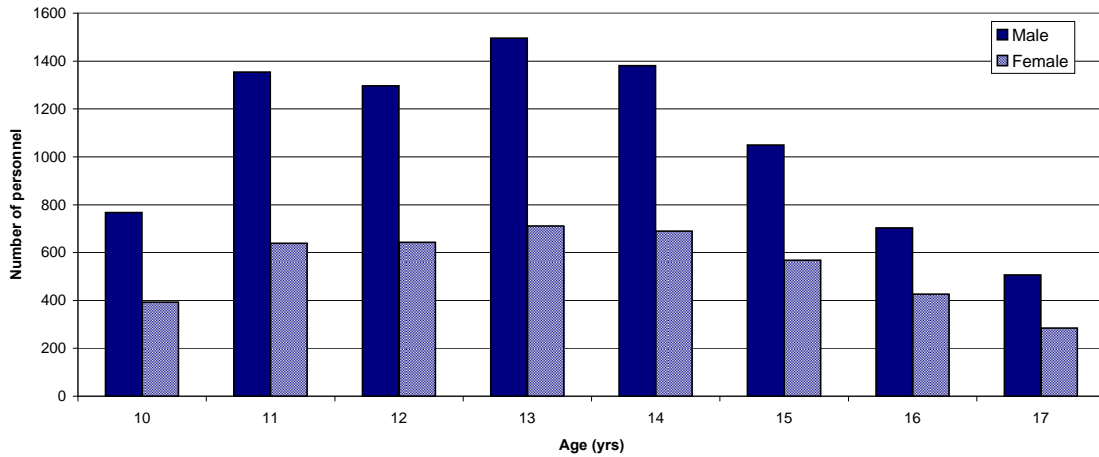
Source: DCDS Pers (RF&C), Single Services

Notes:

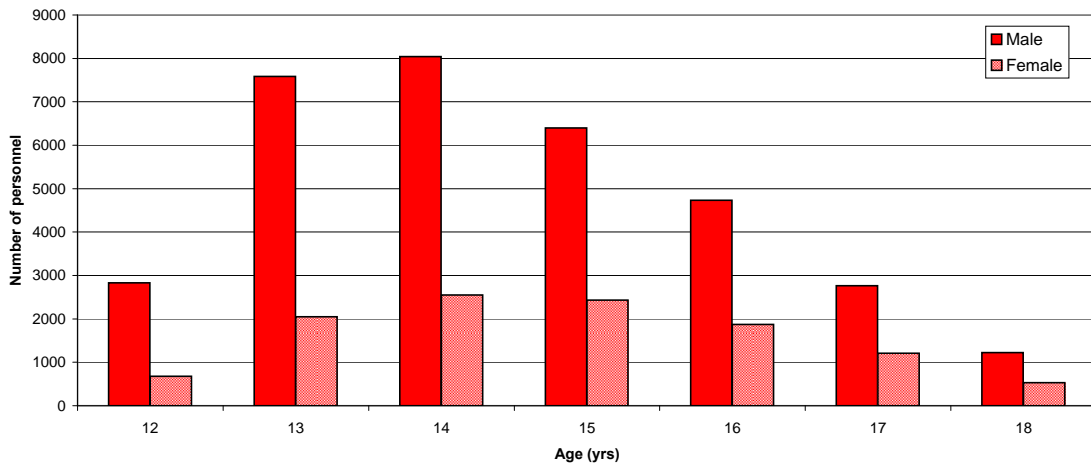
1. Totals include all Community Cadets but exclude all Community Cadet Force Adult Volunteers.
2. The lower age limit for the Sea Cadet Corps is 10 years (12 for Royal Marines Cadets) and the upper age limit is their 18th birthday.
3. The lower age limit for the Army Cadet Force is 12 years and in Year 8 and the upper age limit is 18 years and 9 months.
4. The lower age limit for the Air Training Corps is 13 years and the upper age limit is their 20th birthday.

Strength of Single Service Cadet Forces¹ by Service, age and sex at 1 April 2011

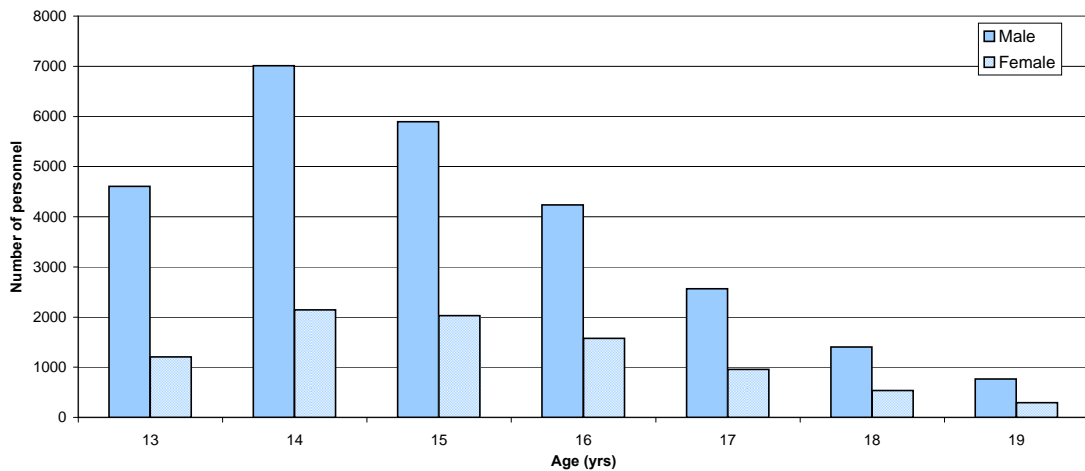
Graph 2.1: Sea Cadet Corps by age² and sex at 1 April 2011



Graph 2.2: Army Cadet Force by age³ and sex at 1 April 2011



Graph 2.3: Air Training Corp by age⁴ and sex at 1 April 2011



Notes:

1. Totals include all Single Service Cadet Forces but exclude all Instructors.
2. The lower age limit for the Sea Cadet Corp is 12 years (13 for Royal Marines Cadets) and the upper age limit is their 18th birthday.
3. The lower age limit for the Army Cadet Force is 12 years and in Year 8 and the upper age limit is 18 years and 9 months.
4. The lower age limit for the Air Training Corps is 13 years and the upper age limit is their 20th birthday.

Table 3 - Strength of Combined Cadet Force Cadets¹ by Service, age² and sex, at 1 April 2011

	Number			Percentage in category		
	Total	Male	Female	Total	Male	Female
Combined Cadet Force	44 890	32 390	12 500	100%	100%	100%
12	290	220	70	0.6%	0.7%	0.6%
13	3 450	2 470	980	7.7%	7.6%	7.9%
14	10 760	7 610	3 150	24.0%	23.5%	25.2%
15	12 530	8 960	3 570	27.9%	27.7%	28.5%
16	8 870	6 560	2 310	19.8%	20.3%	18.5%
17	5 890	4 280	1 610	13.1%	13.2%	12.9%
18 and over	3 100	2 290	810	6.9%	7.1%	6.5%
Naval Service	5 410	3 560	1 850	100%	100%	100%
12	20	20	10	0.4%	0.4%	0.5%
13	220	140	80	4.0%	3.8%	4.4%
14	1 040	630	400	19.1%	17.8%	21.7%
15	1 520	970	550	28.1%	27.3%	29.6%
16	1 270	870	400	23.4%	24.5%	21.5%
17	910	620	290	16.8%	17.5%	15.6%
18 and over	440	310	120	8.1%	8.8%	6.8%
<i>of which:</i>						
Royal Navy	4 860	3 050	1 810	100%	100%	100%
12	20	10	10	0.5%	0.4%	0.5%
13	200	120	80	4.2%	4.0%	4.4%
14	960	560	400	19.7%	18.4%	21.9%
15	1 360	830	540	28.0%	27.2%	29.5%
16	1 130	740	390	23.2%	24.4%	21.3%
17	810	520	280	16.6%	17.2%	15.7%
18 and over	380	260	120	7.8%	8.5%	6.8%
Royal Marines	550	510	40	100%	100%	100%
12	-	-	-	-	-	-
13	10	10	-	2.6%	2.3%	-
14	80	70	-	14.4%	14.5%	-
15	160	140	10	28.5%	28.1%	33.3%
16	140	130	10	25.5%	25.0%	33.3%
17	100	100	-	18.4%	19.1%	-
18 and over	60	50	-	10.2%	10.5%	-
Army	30 220	21 850	8 370	100%	100%	100%
12	220	170	50	0.7%	0.8%	0.6%
13	2 700	1 930	760	8.9%	8.9%	9.1%
14	7 900	5 630	2 260	26.1%	25.8%	27.0%
15	8 360	5 980	2 380	27.7%	27.3%	28.5%
16	5 550	4 140	1 410	18.4%	18.9%	16.9%
17	3 570	2 590	980	11.8%	11.9%	11.6%
18 and over	1 930	1 410	520	6.4%	6.4%	6.2%
Royal Air Force	9 260	6 980	2 280	100%	100%	100%
12	40	40	10	0.5%	0.5%	0.4%
13	540	400	140	5.8%	5.7%	6.1%
14	1 830	1 340	490	19.8%	19.3%	21.3%
15	2 650	2 020	640	28.6%	28.9%	27.9%
16	2 050	1 550	500	22.1%	22.2%	21.8%
17	1 410	1 060	350	15.3%	15.3%	15.3%
18 and over	730	570	160	7.9%	8.2%	7.2%

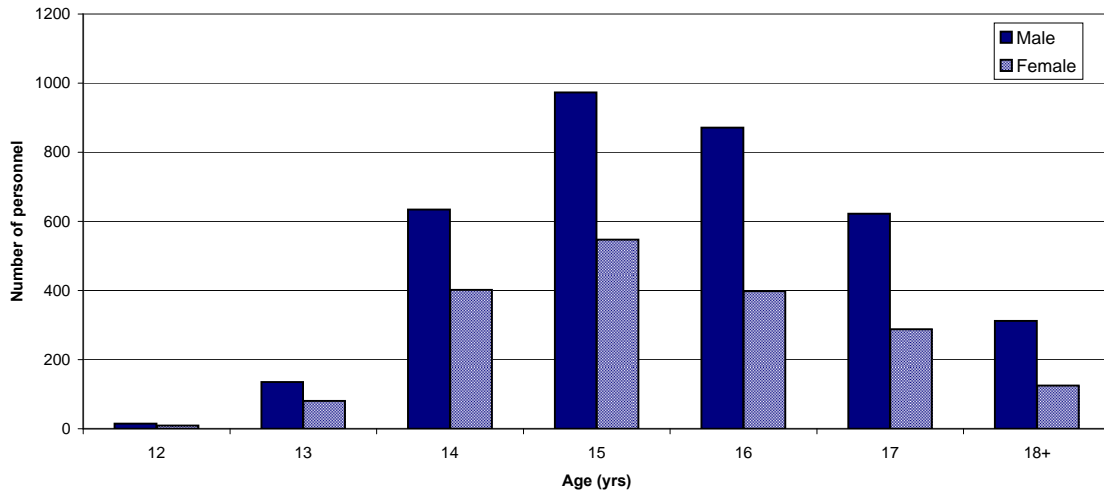
Source: DCDS Pers (RF&C), Single Services

Notes:

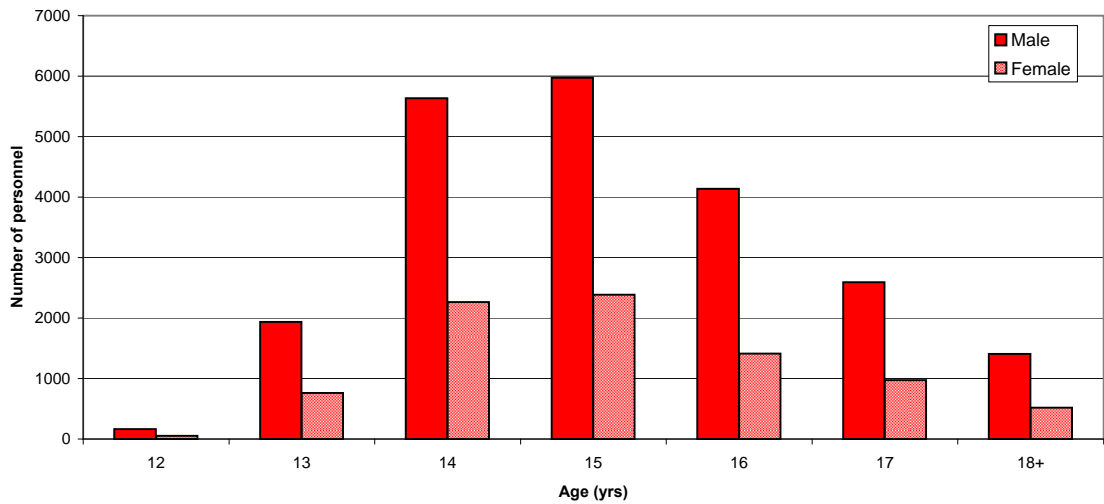
1. Totals include all Combined Cadet Force Cadets but exclude all Combined Cadet Force Adult Volunteers.
 2. The lower age limit for the Combined Cadet Force is 12 years old and the upper age limit relates to the end of the summer holidays of their final year of school.
- denotes zero or rounded to zero, percentages are not shown.

Strength of Combined Cadet Force¹ by service, age² and sex at 1 April 2011

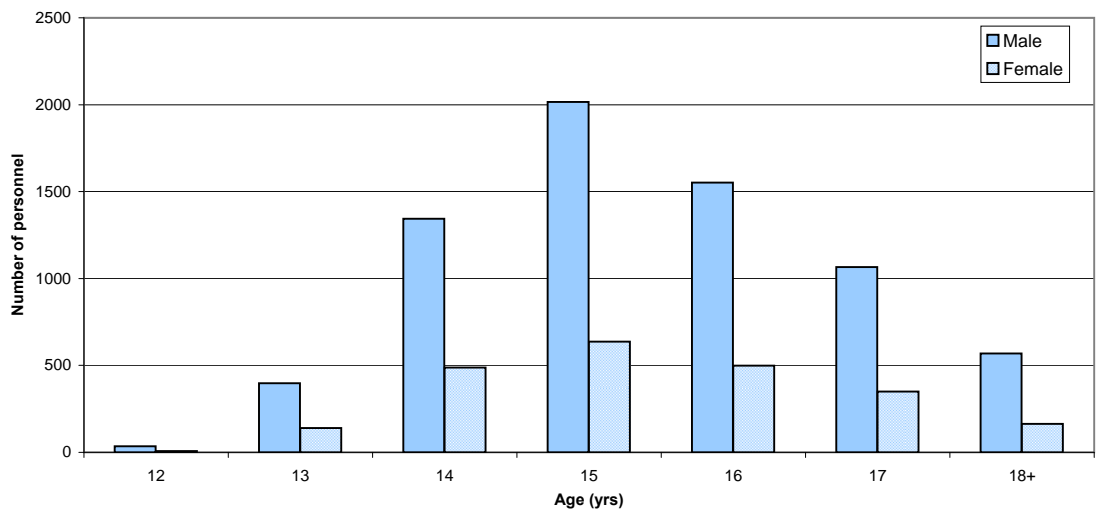
Graph 3.1: Naval Service Cadets by age and sex at 1 April 2011



Graph 3.2: Army Cadets by age and sex at 1 April 2011



Graph 3.3: Royal Air Force Cadets by age and sex at 1 April 2011



Notes:

1. Totals include all Combined Cadet Forces Cadets but exclude all Combined Cadet Force instructors.
2. The lower age limit for the Combined Cadet Force is 12 years old and the upper age limit relates to the end of the summer holidays of their final year of school.

Table 4 - Strength of Community Cadet Force Adult Volunteers (CAV) by Service and sex, at 1 April 2011

	Number			Percentage in category		
	Total	Male	Female	Total	Male	Female
Community Cadet Forces Adult Volunteers	24 510	17 610	6 900	100%	100%	100%
Uniformed Adult Volunteer	16 890	12 240	4 650	69%	70%	67%
Non-Uniformed Adult Volunteer	7 620	5 370	2 260	31%	30%	33%
Sea Cadet Corps	5 600	3 640	1 960	100%	100%	100%
Uniformed Adult Volunteer	3 630	2 480	1 160	65%	68%	59%
Non-Uniformed Adult Volunteer	1 970	1 170	810	35%	32%	41%
Army Cadet Force	8 440	6 180	2 270	100%	100%	100%
Uniformed Adult Volunteer	8 440	6 180	2 270	100%	100%	100%
Non-Uniformed Adult Volunteer	-	-	-	-	-	-
Air Training Corps	10 460	7 790	2 670	100%	100%	100%
Uniformed Adult Volunteer	4 810	3 580	1 230	46%	46%	46%
Non-Uniformed Adult Volunteer	5 650	4 200	1 450	54%	54%	54%

Source: DCDS Pers (RF&C), Single Services

Table 5 - Strength of Combined Cadet Force Adult Volunteers (CAV) by Service and sex, at 1 April 2011

	Number			Percentage in category		
	Total	Male	Female	Total	Male	Female
Combined Cadet Force Adult Volunteers	2 150	1 560	600	100%	100%	100%
Naval Service	300	220	80	100%	100%	100%
Uniformed Adult Volunteer	300	220	80	100%	100%	100%
Non-Uniformed Adult Volunteer	-	-	-	-	-	-
Royal Navy	280	200	80	100%	100%	100%
Uniformed Adult Volunteer	280	200	80	100%	100%	100%
Non-Uniformed Adult Volunteer	-	-	-	-	-	-
Royal Marines	20	20	-	100%	100%	-
Uniformed Adult Volunteer	20	20	-	100%	100%	-
Non-Uniformed Adult Volunteer	-	-	-	-	-	-
Army	1 220	900	320	100%	100%	100%
Uniformed Adult Volunteer	1 220	900	320	100%	100%	100%
Non-Uniformed Adult Volunteer	-	-	-	-	-	-
Royal Air Force	630	440	190	100%	100%	100%
Uniformed Adult Volunteer	630	440	190	100%	100%	100%
Non-Uniformed Adult Volunteer	-	-	-	-	-	-

Source: DCDS Pers (RF&C), Single Services