



Ministry of  
**JUSTICE**

**Population in custody  
monthly tables  
July 2010  
England and Wales**

Ministry of Justice  
Statistics bulletin

Published 27 August 2010

## Population in custody July 2010 - Key points

### **Resumption of publication and use of new data source**

Publication of the monthly population in custody bulletin was suspended from August 2009 to March 2010 due to technical problems relating to the supply of data for statistical purposes. Publication of the bulletin resumed in April 2010 as announced on the MoJ website [www.justice.gov.uk/publications/populationincustody.htm](http://www.justice.gov.uk/publications/populationincustody.htm)

As a result of these technical problems, detailed figures for July 2009 to February 2010 are not available, so in this and subsequent bulletins which include these months it is not possible to make comparisons to a year ago other than for headline totals.

Since resuming publication, figures in this bulletin are based on a new data source, consistent with the published weekly prison figures.

### **Population in custody (prisons, secure training centres and secure children's homes)**

- The population in custody on 31 July 2010 was 85,200, a rise of 1 per cent from a year earlier. The population in prisons was 84,800 (a rise of 790 from a year earlier), in Secure Training Centres (STCs) it was 280 and in Secure Children's Homes (SCHs) it was 180.

### **Population in prison**

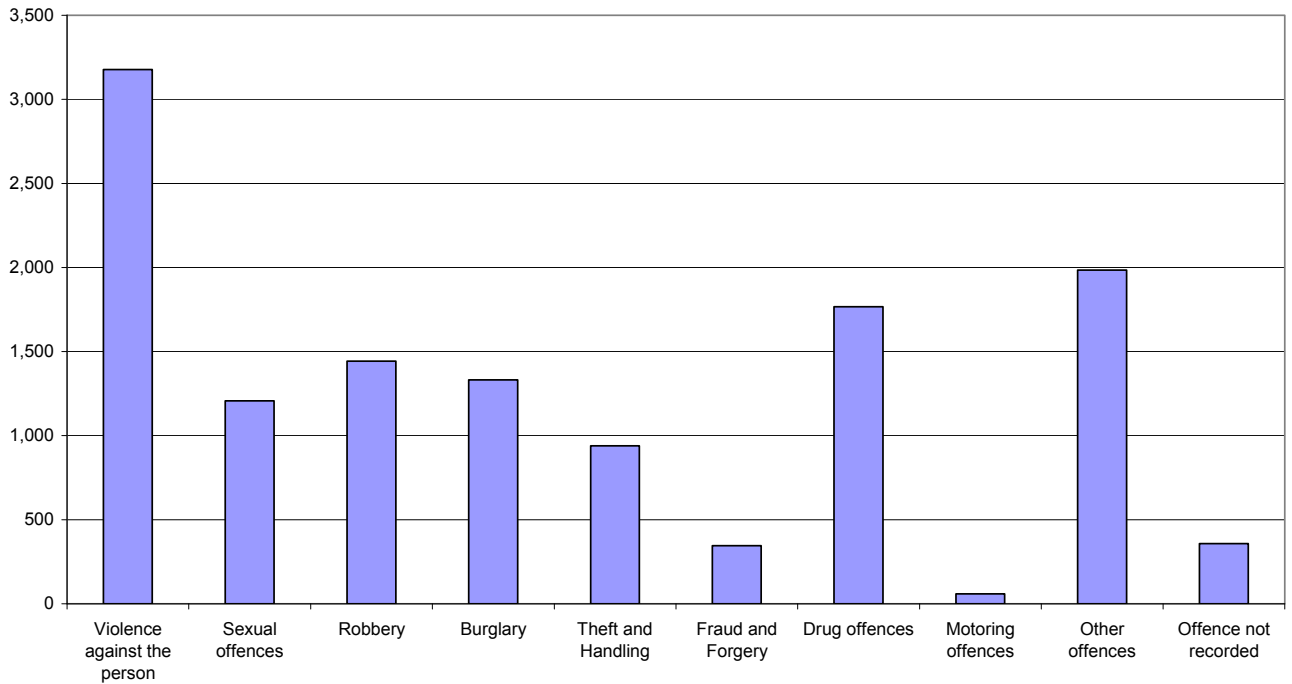
- The male prison population increased by 1 per cent (up 920) to 80,500 and the female prison population fell by 3 per cent (down 130) to 4,200 in July 2010 compared to July 2009.
- The adult population in prison was 73,100 at 31 July 2010, an increase of 1 per cent (up 820) from a year earlier. Over the same time period the number of 15 to 17 year olds fell 22 per cent (down 460) to 1,620 and the young adult prison population (see definitions) increased 4 per cent (up 430) to 10,100 at 31 July 2010.
- The remand population in prison fell 5 per cent from 13,300 in July 2009 to 12,600 in July 2010 (down 680). Within this total, the untried population fell 6 per cent (down 570) to 8,300 and the convicted unsentenced population fell 2 per cent (down 110), to 4,300.
- There were 71,200 sentenced<sup>(1)</sup> prisoners at 31 July 2010, an increase of 3 per cent from a year earlier (up 2,100). There are now 7,700 prisoners serving sentences of less than 12 months, 44,700 prisoners serving sentences of 12 months or more (excluding indeterminates) and 13,200 prisoners serving indeterminate sentences (Life sentences and indeterminate sentences for public protection - IPPs).
- There were 5,500 recall prisoners at 31 July 2010.

---

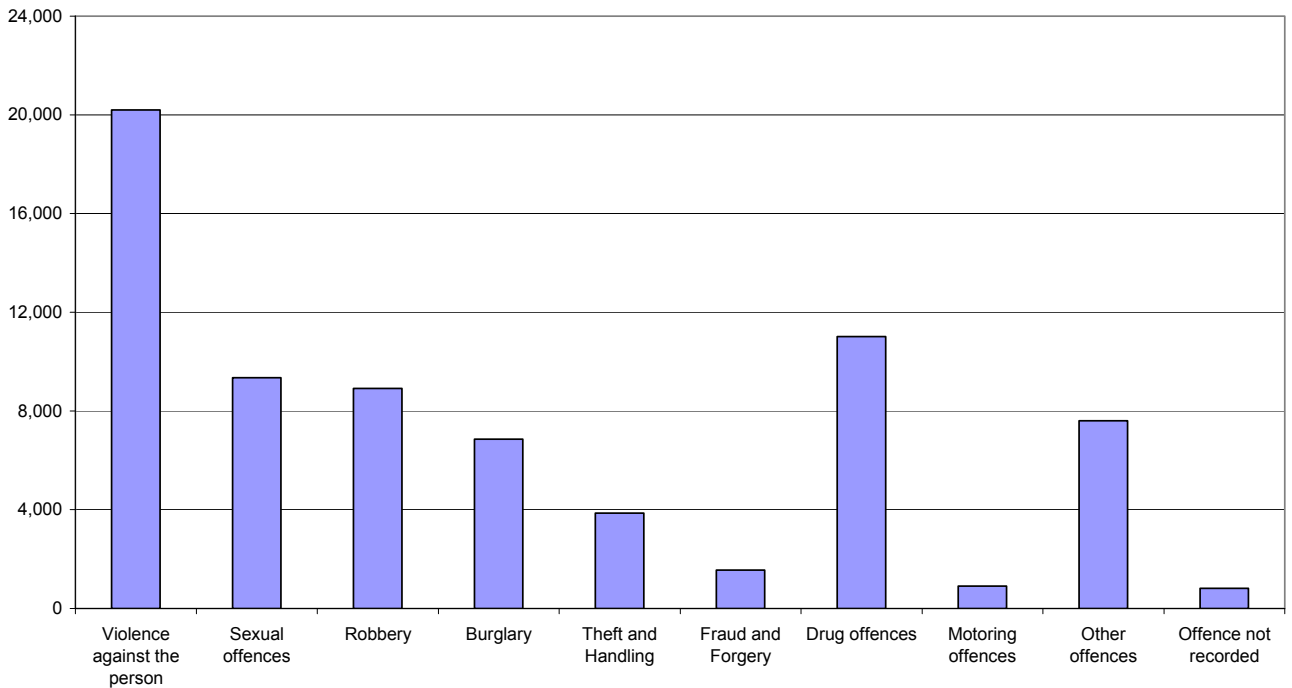
(1) Includes recalls and fine defaulters (see Table 1)

- Amongst both the remand and sentenced populations by far the largest offence group in July 2010 was violence against the person representing 25 per cent and 28 per cent of the totals (of 13,300 and 71,200) respectively.
- The prison population was 109 per cent of the 'In Use CNA' (77,700) at 31 July 2010.

**Figure A: Remand population by offence group July 2010**



**Figure B: Immediate custodial sentenced population by offence group July 2010**



## NOTES

### Data sources and quality

The data presented in this brief are drawn from the prison administrative IT systems. Although care is taken when processing and analysing the returns, the data collected is subject to the inaccuracies inherent in any large-scale recording system. While the figures shown have been checked as far as practicable, they should be regarded as approximate and not necessarily accurate to the last whole number shown in the tables. They are fit to be used for purposes of looking at trends and for comparing the relative magnitude of components.

The prison population information is now drawn from a single prison source. Although different from the source used up to July 2009, it contains the same details for individual inmates such as date of birth, sex, religion, ethnic origin, custody type, offence, reception and discharge dates, and for sentenced prisoners, sentence length. The overall reliability of the sentence length data has increased, but in a small number of cases, sentence length data is missing and has been imputed. Sentence lengths have been imputed for around 1,500 cases in the July 2010 dataset.

There have been two changes to the presentation of the data since the resumption of this publication in April 2010:

- The numbers in each sentence length band now exclude recalls which are shown as a separate subgroup within the total sentenced population (previously recalls were included in the relevant sentence length bands).
- The sentenced population groups “less than or equal to 6 months” and “greater than 6 months to less than 12 months” have been slightly revised to “less than 6 months” and “6 months to less than 12 months” respectively as a result of using the new data source.

Unless otherwise stated, numbers in the text have been rounded for ease of reading using the following rules:

Numbers of 100,000 and over are rounded to the nearest 1,000

Numbers from 1,000 – 99,999 are rounded to the nearest 100

Numbers from 10 – 999 are rounded to the nearest 10

Numbers under 10 are unrounded.

Information on the population in STCs and SCHs has been supplied by the Youth Justice Board.

All figures are provisional pending publication of the 2010 Offender Management Caseload Statistics.

## Definitions

Population in custody - Includes those held in prison establishments, police cells under Operation Safeguard, secure training centres (STCs) and secure children's homes (SCHs). All coverage is for England and Wales.

Population in prison – Includes those held in prisons in England and Wales, including the three removal centres (where people are held under immigration powers prior to removal from the UK) of Dover, Haslar and Lindholme.

Sentenced population – Includes those sentenced to an immediate custodial sentence and fine defaulters.

Immediate custodial sentence – this does not include fine defaulters but does include recalls.

Adult prisoners – Prisoners aged 21 years and over.

Young adults – Prisoners aged 18 to 20, but including 21 year old prisoners who were aged 20 or under at conviction who have not been reclassified as part of the adult population

Indeterminate sentences – These cover life sentences and indeterminate sentences for public protection (IPP).

Recalls – Prisoners who are returned to custody having breached the terms of their licence.

## Contact points for further information

Current and previous editions of this publication are available for download at [www.justice.gov.uk/publications/populationincustody.htm](http://www.justice.gov.uk/publications/populationincustody.htm). Future reports will be published on a monthly basis. Spreadsheet files of the tables contained in this document are also available for download from this address.

Press enquiries should be directed to the Ministry of Justice press office:

Tel: 020 3334 3536

Other enquiries about these statistics should be directed to:

Ministry of Justice  
Justice Statistics Analytical Services  
7<sup>th</sup> Floor  
102 Petty France  
London  
SW1H 9AJ  
Tel: 020 3334 3737

General enquiries about the statistical work of the Ministry of Justice can be e-mailed to: [statistics.enquiries@justice.gsi.gov.uk](mailto:statistics.enquiries@justice.gsi.gov.uk)

General information about the official statistics system of the UK is available from [www.statistics.gov.uk](http://www.statistics.gov.uk)

© Crown copyright  
Produced by the Ministry of Justice

Alternative formats are available on request from [statistics.enquiries@justice.gsi.gov.uk](mailto:statistics.enquiries@justice.gsi.gov.uk)

**Table 1: Population in custody: by type of custody, sex and age group <sup>(1)</sup>**

	Jul-09			Jul-10			Percentage change 2009 to 2010		
	Males	Females	Total	Males	Females	Total	Males	Females	Total
<b>All population in custody</b>	<b>79,954</b>	<b>4,447</b>	<b>84,401</b>	<b>80,923</b>	<b>4,278</b>	<b>85,201</b>	<b>1</b>	<b>-4</b>	<b>1</b>
Prisons	79,630	4,332	83,962	80,549	4,201	84,750	1	-3	1
Police cells	0	0	0	0	0	0	*	*	*
SCHs	144	35	179	155	21	176	8	*	-2
STCs	180	80	260	219	56	275	22	-30	6
<b>All population in prison</b>	<b>79,630</b>	<b>4,332</b>	<b>83,962</b>	<b>80,549</b>	<b>4,201</b>	<b>84,750</b>	<b>1</b>	<b>-3</b>	<b>1</b>
<b>Remand</b>	<b>12,449</b>	<b>842</b>	<b>13,291</b>	<b>11,843</b>	<b>768</b>	<b>12,611</b>	<b>-5</b>	<b>-9</b>	<b>-5</b>
Untried	8,325	578	8,903	7,812	517	8,329	-6	-11	-6
Convicted unsentenced	4,124	264	4,388	4,031	251	4,282	-2	-5	-2
<b>Sentenced</b>	<b>65,703</b>	<b>3,420</b>	<b>69,123</b>	<b>67,788</b>	<b>3,409</b>	<b>71,197</b>	<b>3</b>	<b>0</b>	<b>3</b>
Fine defaulter	..	..	..	104	13	117	..	..	..
Less than 6 months	..	..	..	4,172	434	4,606	..	..	..
6 months to less than 12 months	..	..	..	2,874	252	3,126	..	..	..
12 months to less than 4 years	..	..	..	19,646	1,176	20,822	..	..	..
4 years or more (excluding Indeterminate sentences)	..	..	..	22,886	982	23,868	..	..	..
Indeterminate sentences	..	..	..	12,812	379	13,191	..	..	..
Recalls	..	..	..	5,294	173	5,467	..	..	..
<b>Non-criminal prisoners</b>	<b>1,478</b>	<b>70</b>	<b>1,548</b>	<b>918</b>	<b>24</b>	<b>942</b>	<b>-38</b>	<b>*</b>	<b>-39</b>
<b>All adult population in prison</b>	<b>68,362</b>	<b>3,881</b>	<b>72,243</b>	<b>69,321</b>	<b>3,738</b>	<b>73,059</b>	<b>1</b>	<b>-4</b>	<b>1</b>
<b>Remand</b>	<b>9,964</b>	<b>729</b>	<b>10,693</b>	<b>9,578</b>	<b>671</b>	<b>10,249</b>	<b>-4</b>	<b>-8</b>	<b>-4</b>
Untried	6,700	491	7,191	6,331	450	6,781	-6	-8	-6
Convicted unsentenced	3,264	238	3,502	3,247	221	3,468	-1	-7	-1
<b>Sentenced</b>	<b>57,031</b>	<b>3,085</b>	<b>60,116</b>	<b>58,884</b>	<b>3,044</b>	<b>61,928</b>	<b>3</b>	<b>-1</b>	<b>3</b>
Fine defaulter	..	..	..	100	13	113	..	..	..
Less than 6 months	..	..	..	3,394	377	3,771	..	..	..
6 months to less than 12 months	..	..	..	2,142	220	2,362	..	..	..
12 months to less than 4 years	..	..	..	15,616	1,020	16,636	..	..	..
4 years or more (excluding Indeterminate sentences)	..	..	..	20,801	912	21,713	..	..	..
Indeterminate sentences	..	..	..	12,104	356	12,460	..	..	..
Recalls	..	..	..	4,727	146	4,873	..	..	..
<b>Non-criminal prisoners</b>	<b>1,367</b>	<b>67</b>	<b>1,434</b>	<b>859</b>	<b>23</b>	<b>882</b>	<b>-37</b>	<b>*</b>	<b>-38</b>
<b>All 15 -17 year olds in prison</b>	<b>2,028</b>	<b>55</b>	<b>2,083</b>	<b>1,595</b>	<b>29</b>	<b>1,624</b>	<b>-21</b>	<b>*</b>	<b>-22</b>
<b>Remand</b>	<b>497</b>	<b>15</b>	<b>512</b>	<b>427</b>	<b>10</b>	<b>437</b>	<b>-14</b>	<b>*</b>	<b>-15</b>
Untried	355	14	369	346	8	354	-3	*	-4
Convicted unsentenced	142	1	143	81	2	83	-43	*	-42
<b>Sentenced</b>	<b>1,531</b>	<b>40</b>	<b>1,571</b>	<b>1,168</b>	<b>19</b>	<b>1,187</b>	<b>-24</b>	<b>*</b>	<b>-24</b>
Fine defaulter	..	..	..	0	0	0	..	..	..
Less than 6 months	..	..	..	141	3	144	..	..	..
6 months to less than 12 months	..	..	..	272	5	277	..	..	..
12 months to less than 4 years	..	..	..	537	7	544	..	..	..
4 years or more (excluding Indeterminate sentences)	..	..	..	136	1	137	..	..	..
Indeterminate sentences	..	..	..	46	2	48	..	..	..
Recalls	..	..	..	36	1	37	..	..	..
<b>Non-criminal prisoners</b>	<b>0</b>	<b>0</b>	<b>0</b>	<b>0</b>	<b>0</b>	<b>0</b>	<b>*</b>	<b>*</b>	<b>*</b>
<b>All young adults in prison</b>	<b>9,240</b>	<b>396</b>	<b>9,636</b>	<b>9,633</b>	<b>434</b>	<b>10,067</b>	<b>4</b>	<b>10</b>	<b>4</b>
<b>Remand</b>	<b>1,988</b>	<b>98</b>	<b>2,086</b>	<b>1,838</b>	<b>87</b>	<b>1,925</b>	<b>-8</b>	<b>-11</b>	<b>-8</b>
Untried	1,270	73	1,343	1,135	59	1,194	-11	-19	-11
Convicted unsentenced	718	25	743	703	28	731	-2	*	-2
<b>Sentenced</b>	<b>7,141</b>	<b>295</b>	<b>7,436</b>	<b>7,736</b>	<b>346</b>	<b>8,082</b>	<b>8</b>	<b>17</b>	<b>9</b>
Fine defaulter	..	..	..	4	0	4	..	..	..
Less than 6 months	..	..	..	637	54	691	..	..	..
6 months to less than 12 months	..	..	..	460	27	487	..	..	..
12 months to less than 4 years	..	..	..	3,493	149	3,642	..	..	..
4 years or more (excluding Indeterminate sentences)	..	..	..	1,949	69	2,018	..	..	..
Indeterminate sentences	..	..	..	662	21	683	..	..	..
Recalls	..	..	..	531	26	557	..	..	..
<b>Non-criminal prisoners</b>	<b>111</b>	<b>3</b>	<b>114</b>	<b>59</b>	<b>1</b>	<b>60</b>	<b>-47</b>	<b>*</b>	<b>-47</b>

Young adults are those aged 18 - 20 and those 21 year olds who were aged 20 or under at conviction who have not been reclassified as part of the adult population

\* indicates that one or both of the comparative numbers are less than 50 which could give rise to misleading percentage changes

.. Indicates data not available

<sup>(1)</sup> Due to technical data problems only headline totals are available for July 2009



**Table 2: Population in prison by offence, sex and age group -  
remand and immediate custodial sentence <sup>(1)</sup>**

	Jul-10	
	Remand (includes recalls)	Immediate custodial sentence
<b>All prisoners</b>	<b>12,611</b>	<b>71,080</b>
Violence against the person	3,178	20,198
Sexual offences	1,207	9,352
Robbery	1,443	8,914
Burglary	1,332	6,859
Theft and Handling	939	3,862
Fraud and Forgery	346	1,557
Drug offences	1,766	11,017
Motoring offences	58	903
Other offences	1,984	7,603
Offence not recorded	358	815
<b>All male prisoners</b>	<b>11,843</b>	<b>67,684</b>
Violence against the person	2,998	19,291
Sexual offences	1,175	9,273
Robbery	1,390	8,640
Burglary	1,289	6,700
Theft and Handling	848	3,456
Fraud and Forgery	298	1,356
Drug offences	1,642	10,209
Motoring offences	58	889
Other offences	1,821	7,124
Offence not recorded	324	746
<b>All female prisoners</b>	<b>768</b>	<b>3,396</b>
Violence against the person	180	907
Sexual offences	32	79
Robbery	53	274
Burglary	43	159
Theft and Handling	91	406
Fraud and Forgery	48	201
Drug offences	124	808
Motoring offences	0	14
Other offences	163	479
Offence not recorded	34	69

**Table 2: Population in prison by offence, sex and age group -  
remand and immediate custodial sentence <sup>(1)</sup>**

	Jul-10	
	Remand (includes recalls)	Immediate custodial sentence
<b>All adult prisoners</b>	<b>10,249</b>	<b>61,815</b>
Violence against the person	2,552	17,484
Sexual offences	1,064	8,768
Robbery	914	6,812
Burglary	1,006	5,692
Theft and Handling	797	3,415
Fraud and Forgery	335	1,523
Drug offences	1,554	10,187
Motoring offences	48	810
Other offences	1,684	6,446
Offence not recorded	295	678
<b>All adult male prisoners</b>	<b>9,578</b>	<b>58,784</b>
Violence against the person	2,404	16,726
Sexual offences	1,033	8,696
Robbery	873	6,594
Burglary	967	5,543
Theft and handling	712	3,033
Fraud and Forgery	289	1,325
Drug offences	1,444	9,428
Motoring offences	48	799
Other offences	1,540	6,021
Offence not recorded	268	619
<b>All adult female prisoners</b>	<b>671</b>	<b>3,031</b>
Violence against the person	148	758
Sexual offences	31	72
Robbery	41	218
Burglary	39	149
Theft and handling	85	382
Fraud and Forgery	46	198
Drug offences	110	759
Motoring offences	0	11
Other offences	144	425
Offence not recorded	27	59

**Table 2: Population in prison by offence, sex and age group -  
remand and immediate custodial sentence <sup>(1)</sup>**

	Jul-10	
	Remand (includes recalls)	Immediate custodial sentence
<b>All aged 15-17</b>	<b>437</b>	<b>1,187</b>
Violence against the person	136	300
Sexual offences	22	57
Robbery	106	275
Burglary	50	196
Theft and Handling	19	96
Fraud and Forgery	0	1
Drug offences	35	61
Motoring offences	1	7
Other offences	52	184
Offence not recorded	16	10
<b>All males aged 15-17</b>	<b>427</b>	<b>1,168</b>
Violence against the person	132	289
Sexual offences	22	57
Robbery	105	272
Burglary	50	196
Theft and handling	19	95
Fraud and Forgery	0	1
Drug offences	34	60
Motoring offences	1	7
Other offences	50	181
Offence not recorded	14	10
<b>All females aged 15-17</b>	<b>10</b>	<b>19</b>
Violence against the person	4	11
Sexual offences	0	0
Robbery	1	3
Burglary	0	0
Theft and handling	0	1
Fraud and Forgery	0	0
Drug offences	1	1
Motoring offences	0	0
Other offences	2	3
Offence not recorded	2	0

**Table 2: Population in prison by offence, sex and age group -  
remand and immediate custodial sentence <sup>(1)</sup>**

	Jul-10	
	Remand (includes recalls)	Immediate custodial sentence
<b>All young adults</b>	<b>1,925</b>	<b>8,078</b>
Violence against the person	490	2,414
Sexual offences	121	527
Robbery	423	1,827
Burglary	276	971
Theft and Handling	123	351
Fraud and Forgery	11	33
Drug offences	177	769
Motoring offences	9	86
Other offences	248	973
Offence not recorded	47	127
<b>All male young adults</b>	<b>1,838</b>	<b>7,732</b>
Violence against the person	462	2,276
Sexual offences	120	520
Robbery	412	1,774
Burglary	272	961
Theft and handling	117	328
Fraud and Forgery	9	30
Drug offences	164	721
Motoring offences	9	83
Other offences	231	922
Offence not recorded	42	117
<b>All female young adults</b>	<b>87</b>	<b>346</b>
Violence against the person	28	138
Sexual offences	1	7
Robbery	11	53
Burglary	4	10
Theft and handling	6	23
Fraud and Forgery	2	3
Drug offences	13	48
Motoring offences	0	3
Other offences	17	51
Offence not recorded	5	10

Figures for immediate custodial population includes recallees, but excludes fine defaulters

<sup>(1)</sup> Due to technical data problems no offence breakdown data are available for July 2009

**Table 3: Young population in prison: by type of custody and sex**

31 July 2010

	15	16	17	Total - under 18	18	19	20	21	Total Young Adults
<b>All young population in prisons</b>									
<b>Remand</b>	41	135	261	437	579	637	553	156	1,925
Untried	34	104	216	354	377	385	333	99	1,194
Convicted unsentenced	7	31	45	83	202	252	220	57	731
<b>Sentenced</b>	97	328	762	1,187	1,375	2,417	2,727	1,563	8,082
Fine defaulter	0	0	0	0	3	1	0	0	4
Immediate custodial sentence (includes recalls)	97	328	762	1,187	1,372	2,416	2,727	1,563	8,078
<b>Non-criminal prisoners</b>	0	0	0	0	4	15	24	17	60
<b>All young male population in prisons</b>									
<b>Remand</b>	41	135	251	427	562	599	528	149	1,838
Untried	34	104	208	346	366	360	314	95	1,135
Convicted unsentenced	7	31	43	81	196	239	214	54	703
<b>Sentenced</b>	97	328	743	1,168	1,309	2,309	2,617	1,501	7,736
Fine defaulter	0	0	0	0	3	1	0	0	4
Immediate custodial sentence (includes recalls)	97	328	743	1,168	1,306	2,308	2,617	1,501	7,732
<b>Non-criminal prisoners</b>	0	0	0	0	4	15	24	16	59
<b>All young female population in prisons</b>									
<b>Remand</b>	0	0	10	10	17	38	25	7	87
Untried	0	0	8	8	11	25	19	4	59
Convicted unsentenced	0	0	2	2	6	13	6	3	28
<b>Sentenced</b>	0	0	19	19	66	108	110	62	346
Fine defaulter	0	0	0	0	0	0	0	0	0
Immediate custodial sentence (includes recalls)	0	0	19	19	66	108	110	62	346
<b>Non-criminal prisoners</b>	0	0	0	0	0	0	0	1	1

Young adults are those aged 18 - 20 and those 21 year olds who were aged 20 or under at conviction who have not been reclassified as part of the adult population

**Table 4: CNA and population by sex and establishment**

31st July 2010

Establishment	In use CNA <sup>(1)</sup>	Total Population
<b>Males</b>		
Altcourse	794	1,254
Acklington	946	924
Ashfield	407	315
Ashwell	184	214
Aylesbury	421	442
Belmarsh	800	853
Buckley Hall	350	381
Blundeston	481	527
Bedford	321	468
Blantyre House	122	120
Bristol	424	601
Birmingham	1,088	1,428
Bullingdon	879	1,061
Bure	503	521
Brinsford	545	530
Bullwood Hall	220	220
Brixton	606	742
Chelmsford	524	635
Cardiff	555	805
Cookham Wood	143	127
Coldingley	494	507
Castington	240	203
Channings Wood	698	722
Canterbury	195	307
Dartmoor	572	574
Dovegate	1,060	1,115
Durham	606	913
Doncaster	713	1,086
Dorchester	146	212
Deerbolt	513	493
Dover	316	304
Erlestoke	470	449
Sheppey Cluster (Standford Hill)	464	444
Everthorpe	603	677
Exeter	316	516
Sheppey Cluster (Elmley)	925	1,166
Forest Bank	1,064	1,356
Ford	557	546
Frankland	859	805
Feltham	762	636
Full Sutton	596	590
Featherstone	642	648
Garth	812	840
Gloucester	225	298
Guys Marsh	452	490
Grendon/ Spring Hill	573	549
Glen Parva	652	739
Gartree	677	665
Hollesley Bay	365	358
Huntercombe	360	2
Hewell <sup>(2)</sup>	1,173	1,355
Holme House	1,033	987
Hindley	440	326
Hull	723	921
High Down	999	1,077
Highpoint	920	941
Haslar	123	118
Haverigg	622	627
Isis <sup>(3)</sup>	24	19
Isle of Wight <sup>(4)</sup>	1,564	1,671
Kirkham	590	582
Kennet	175	340
Kirklevington Grange	283	276
Lancaster	161	236
Leicester	210	356

**Table 4: CNA and population by sex and establishment**

31st July 2010

<b>Establishment</b>	<b>In use CNA <sup>(1)</sup></b>	<b>Total Population</b>
Leeds	829	1,103
Lancaster Farms	480	489
Lowdham Grange	900	908
Lindholme	1,054	1,116
Lincoln	436	589
Long Lartin	622	617
Latchmere House	207	195
Liverpool	1,157	1,259
Littlehey	1,143	1,057
Lewes	495	471
Leyhill	532	522
Moorland/Moorland Open <sup>(5)</sup>	987	1,004
Manchester	949	1,198
Maidstone	565	599
Mount	747	765
Edmunds Hill	379	362
Nottingham	723	1,011
Northallerton	137	212
North Sea Camp	318	309
Norwich	625	745
Onley	710	704
Peterborough <sup>(6)</sup>	480	582
Portland	463	464
Preston	453	745
Parc	838	1,114
Kingston (Portsmouth)	199	197
Pentonville	909	1,187
Rochester	724	712
Reading	190	232
Rye Hill	600	594
Ranby	969	1,067
Risley	1,050	1,077
Stafford	741	723
Stoke Heath	576	576
Stocken	779	835
Sheppey Cluster (Swaleside)	1,112	1,099
Shepton Mallet	165	189
Swinfen Hall	604	600
Sudbury	581	574
Swansea	240	419
Shrewsbury	184	301
Thorn Cross	322	277
Usk/ Prescoed	320	423
Verne	571	590
Wellingborough	548	475
Winchester	499	666
Wakefield	748	733
Wealstun	704	650
Woodhill	656	770
Warren Hill	222	161
Wayland	957	1,005
Wymott	1,113	1,165
Werrington	160	113
Wolds	320	388
Whitemoor	452	450
Wormwood Scrubs	1,176	1,269
Whatton	709	788
Wandsworth	1,107	1,575
Wetherby	352	319
<b>TOTAL</b>	<b>73,068</b>	<b>80,549</b>

**Table 4: CNA and population by sex and establishment**

31st July 2010

<b>Establishment</b>	<b>In use CNA <sup>(1)</sup></b>	<b>Total Population</b>
<b>Females</b>		
Askham Grange	126	122
Bronzeheld	527	501
Drake Hall	315	296
Downview	358	317
East Sutton Park	98	87
Eastwood Park	326	292
Foston Hall	283	233
Holloway	496	432
Low Newton	282	214
Morton Hall	391	280
New Hall	386	359
Peterborough <sup>(6)</sup>	360	347
Send	282	277
Styal	451	444
<b>TOTAL</b>	<b>4,681</b>	<b>4,201</b>
<b>Male and female establishment TOTAL</b>	<b>77,749</b>	<b>84,750</b>
<b>Police cells</b>	<b>***</b>	<b>0</b>
<b>Establishment and Police cell TOTAL</b>	<b>77,749</b>	<b>84,750</b>

<sup>(1)</sup> In Use CNA - Certified Normal Accommodation that is available for immediate use, excludes damaged cells, cells affected by building works and cells taken out of use due to staff shortages

<sup>(2)</sup> HMP Hewell was created by an amalgamation of the three former prisons, Blakenhurst, Brockhill and Hewell Grange on 25 June 2008

<sup>(3)</sup> HMP & YOI Isis, which opened on 28 July 2010, is sited within the perimeter wall of HMP Belmarsh

<sup>(4)</sup> HMP Isle of Wight was created by an amalgamation of the three former prisons, Albany, Camp Hill and Parkhurst on 1st April 2009

<sup>(5)</sup> Data for Moorland/Moorland Open have been combined

<sup>(6)</sup> Peterborough is a dual purpose prison for men and women

\*\*\* On 31 July 2010 up to 400 police cells were available under operation safeguard which are not included in the CNA figure