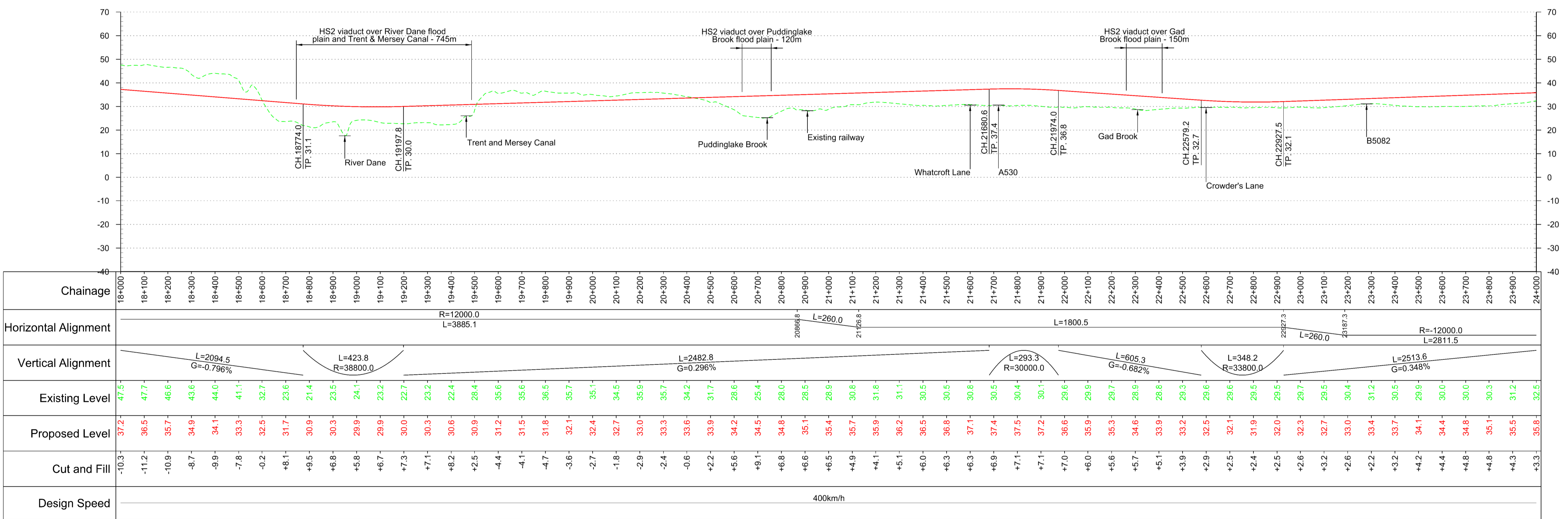
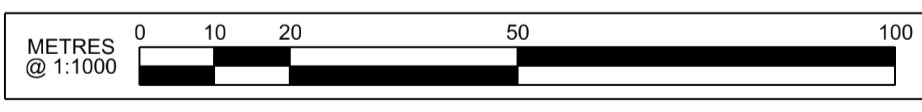
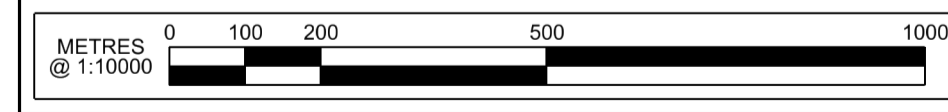


Plan  
Scale 1:10,000 @ A1



Profile  
Scale H:1:10,000 V:1:1000 @ A1

**Fit for Condition A**



Rev	Description	Drawn	Checked	Con App	HS2 App
P06	Issued for Condition A	MB	DC	JG	
P05	Issued for Condition A	DC	DC	JG	
P04	Issued for Condition A	KB	DC	JG	
P03	For Review	KB	DC	JG	
P02	For Review	KB	DC	JG	

HS2 accepts no responsibility for any circumstances which arise from the reproduction of this document after alteration, amendment or abbreviation or if it is issued in part or issued incompletely in any way.

© Crown Copyright and database right 2012. All rights reserved. Ordnance Survey Licence number 100049190

© Crown Copyright material is reproduced with the permission of Land Registry under delegated authority from the Controller of HMSO. This material was last updated on 2012 and may not be copied, distributed, sold or published without the formal permission of Land Registry. Only an official copy of a title plan or register obtained from the Land Registry may be used for legal or other official purposes.

Scale with caution as distortion can occur.

**Key Environmental Features Legend**

World Heritage Site	Scheduled Monuments
Ramsar	Registered Parks and Gardens
Special Areas of Conservation	Historical Battlefields
Special Protection Areas	Active and/or Authorised Landfill
SSSI	Historical Landfill
National Nature Reserves	Flood Zones
Area of Outstanding Natural Beauty	
National Park	

**Legend**

Track Centrelines	Viaduct	Railway Cutting
Tunnel	Fully Retained Cutting/Fill	Railway Embankment
Major Contour	Ground Profile	Minor Contour
Track Profile	Node	Retained structures will be used at depths of 15m or greater
Engineering Earthworks	HS2 Depot/Station Operational Boundary	

Registered in England  
Registration No. 06791686  
Registered office:  
Eland House,  
Bressenden Place,  
London, SW1E 5DU

Creator/Organizer: **AECOM**

HS2 Security Classification: **INTERNAL**

Zone	Manchester Leg North of Crewe
Design Stage	Pre-Consultation
Drawing Title	Route HSM10 Plan and Profile Sheet 4 of 6

Project/Contract			West Midlands to Manchester Route		
Discipline/Function			Railway Track		
Drawn	Checked	Approved	KB	DC	JG
Date	Scale	Size	17/04/2013	AS SHOWN	A1
Drawing No.			Rev.		
C320-AEC-RT-DPP-220-061004			P06		