

Royal Navy Service Monthly Personnel Situation Report

Published 13 March 2014

Statistical Release

Issued by:
Defence Statistics

The statistician responsible for this report is the
Defence Statistics (Navy) Head of Branch.

Email:
Defstrat-stat-navy-hd@mod.uk

If you would like to be informed by email of
updates to this publication please subscribe via
email:

Defstrat-stat-Navy@mod.uk

We welcome feedback, comments and queries
on this report. Please contact us on the above
email

The Background Quality Report for this
publication can be found at:

[Background Quality Report](#)

Links to other publications which may be of interest

[UK Armed Forces Redundancy Programme
Statistics](#) This publications contains information
on the number of UK Armed Forces personnel
either applying or being selected for
redundancy in the various tranches. Please
note that not all of those who applied were
selected and not all of those that were selected
had applied for redundancy.

[Royal Navy Quarterly Pocket Brief](#) This
quarterly publication contains information on
strengths, requirements, intakes and outflows
from the Royal Navy service

All data within this report are derived from the Defence Statistics ARES2 Manpower Database. The date of this report represents data as at the last day of the preceding month, for example the Feb 2014 report represents data as at the 1st of February 2014. The strengths data represents the position at the first day of the month whereas the flows data shows movement during the previous calendar month. The strength does not include personnel who are Absent without Leave (AWOL) or Long Term Absentees (LTA).

All totals are rounded in accordance with the Defence Statistics rounding policy; therefore totals may not equal the sum of their parts. All numbers over 100 are rounded to the nearest 10 with numbers ending in 5 rounded to the nearest multiple of 20 to avoid bias. Numbers under 100 are rounded to the nearest 5, with numbers that would be rounded to '0' represented by '-'.

From June 2011, liability split by Branch & Specialisation is taken from the relevant Planning Liability; this is currently PL 1-13, scaled to DP. Monthly liability figures are calculated using a straight interpolation between the relevant PL April points, currently April 2013 and April 2014.

Information about some of the tables used in this report

The Royal Marine Aircrew-men are included with XAV; Royal Marine Medical Assistants are included with Medical. Where an RM/RN total split is given they are included with the RM. Royal Marine Officers include Royal Marine pilots.

Ratings and Officers whose specialisation has not yet been assigned are covered by 'No Spec' for Officers and 'No Trade' for the Ratings. FTRS are only included in Table 1, unless otherwise stated. Transfer trainees have been removed the Trained Strength Tables. Previously published graphs linked to future exits have been removed in line with the Data Protection Act 1988.

Voluntary Outflow (VO)

VO exit rates are calculated using the 12 months total exits divided by the average strength which is calculated using a 13 month centred rolling average.

Headline Figures for this months publication

Strengths

The trained regular strength of the Naval Service including FTRS Regulars was 30,590 a decrease of 210 from the previous month, giving a surplus of 0.7% against the liability. As shown in Table 1a. The trained regular strength excluding FTRS regulars was 30,410, a decrease of 120 from the previous month. Also shown in Table 1a.

Outflows

The total outflow from the trained regular strength was 3,330 in the 12 months to February 1st 2014, made up of 2,870 Ratings and 460 officers Tables 9a and 9b.

Revisions

Defence statistics has undertaken a major review of all Armed Forces personnel data from the Joint Personnel Administration System (JPA). This has resulted in changes to the strengths, intake and outflow reported in this publication, the following periods are affected: **Flows** – from period ending 31 March 2009 to the period ending 31 October 2011. Changes to monthly outflow figures range from fewer than 10 to around 50. **Strengths** – from 1 May 2009 to 1 November 2011 (inclusive). Changes of around 20 per month have been made to the headline strengths. The revised data are considered finalised and are therefore no longer marked provisional. Data for 1 November 2011 and subsequent dates are considered final.

Naval Service Monthly Personnel Situation Report

Contents

1st February 2014

- 1 **Current & Historic Trained Strengths**
 - a Trained Strengths and Liability
 - b Summary Strengths by Service and Arm
 - c/d Graphs of Trained Strengths and Liability for the Naval Service

- 2 **Trained Strengths by Branch, Specialisation and Arm**
 - a Trained Regular Officer Strengths and Liability by Branch, Specialisation and Arm
 - b Trained Regular Rating Strengths and Liability by Branch, Specialisation and Arm
 - c Trained FTRS Officer Strengths by Branch, Specialisation and Arm
 - d Trained FTRS Rating Strengths by Branch, Specialisation and Arm

- 3 **Trained Regular Strengths by Branch and Paid Rank**
 - a Trained Regular Officer Strengths and Liability
 - b Trained Regular Rating Strengths and Liability
 - c Graphs of Trained Regular Officer Surplus/Deficit by Paid Rank
 - d Graphs of Trained Regular Rating Surplus/Deficit by Paid Rank
 - e Trained FTRS Officer Strengths by Branch and Paid Rank
 - f Trained FTRS Rating Strengths by Branch and Paid Rank

- 4 **Trained Regular Strengths by Branch, Specialisation, Arm and Paid Rank**
 - a (GS) Trained Regular Officer General Service Strengths by Branch, Specialisation, Arm and Paid Rank
 - a (SM) Trained Regular Officer Submariner Strengths by Branch, Specialisation, Arm and Paid Rank
 - a (FAA) Trained Regular Officer Fleet Air Arm Strengths by Branch, Specialisation, Arm and Paid Rank
 - b (GS) Trained Regular Rating General Service Strengths by Branch, Specialisation, Arm and Paid Rank
 - b (SM) Trained Regular Rating Submariner Strengths by Branch, Specialisation, Arm and Paid Rank
 - b (FAA) Trained Regular Rating Fleet Air Arm Strengths by Branch, Specialisation, Arm and Paid Rank

- 5 **Untrained Regular Strengths by Branch and Paid Rank**
 - a Untrained Regular Officer Strengths by Branch and Paid Rank
 - b Untrained Regular Rating Strengths by Branch and Paid Rank

- 6 **Trained Regular Strengths By Budgetary Area**

- 7 **Trained Regular Length of Service**
 - a Trained Regular Length of Service by Rank
 - b Trained Regular Officer Length of Service by Paid Rank
 - c Trained Regular Rating and Other Rank Length of Service by Paid Rank

- 8 **Trained Regular Officer and Rating Due Outflow Over next 12 months**
 - a This table has been removed from the report as of July 2013

- 9 **Trained Regular Naval Service Outflows**
 - a Trained Regular Naval Service Officer Outflows
 - b Trained Regular Naval Service Rating Outflows

- 10 **Trained Regular Voluntary Outflow**
 - a Trained Regular Officer Voluntary Outflow by Paid Rank
 - b Trained Regular Rating Voluntary Outflow by Paid Rank

- 11 **Trained Regular Promotions to Substantive Rank**
 - a Trained Regular Officer Promotions To Substantive Rank
 - b Trained Regular Rating and Other Rank Promotions To Substantive Rank

- 12 **Gains to Trained Strength**
 - a Gains to the Officer Trained Strength by Branch
 - b Gains to the Rating Trained Strength by Branch

- 13 **Trained Intake from Civil Life or Another Service**

Glossary of Terms

Summary of NATO Ranks

Summary of NATO Ranks			
		Royal Navy	Royal Marines
****	OF-10	Admiral of the Fleet	
	OF-9	Admiral	General
***	OF-8	Vice Admiral	Lieutenant General
**	OF-7	Rear Admiral	Major General
*	OF-6	Commodore	Brigadier
	OF-5	Captain	Colonel
	OF-4	Commander	Lt Colonel
	OF-3	Lieutenant Commander	Major
	OF-2	Lieutenant	Captain
	OF-1	Sub-Lieutenant	Lieutenant/2nd Lieutenant
	OF(D)	Officer Designate	Officer Designate
	OR-9	Warrant Officer 1	Warrant Officer 1
	OR-8	Warrant Officer 2	Warrant Officer 2
	OR-7	Chief Petty Officer	Colour Sergeant
	OR-6	Petty Officer	Sergeant
	OR-5		
	OR-4	Leading Rate	Corporal
	OR-3		Lance Corporal
	OR-2	Able Rate	Marine (1st Class)
	OR-1 ¹	Ordinary Rate/Junior	Marine (2nd Class)/Junior

¹ The rank of OR-1 is now obsolete.

1a

Trained Strengths and Liability

		Apr-10	Apr-11	Apr-12	Apr-13	Aug-13	Sep-13	Oct-13	Nov-13	Dec-13	Jan-14	Feb-14
RNS Regulars		35,170	35,180	35,250	31,280	30,860	30,670	30,550	30,440	30,500	30,530	30,410
FTRS "Regulars" *		330	330	180	150	160	160	170	180	170	170	180
FTRS "Non-Regulars" *		250	250	260	250	270	280	280	290	300	310	310
Total	<i>Naval Service</i>	35,500	35,500	35,420	31,420	31,020	30,830	30,720	30,610	30,670	30,700	30,590
	Royal Navy	28,120	28,120	27,860	24,430	23,960	23,770	23,670	23,550	23,570	23,500	23,420
	Royal Marines	7,060	7,060	7,380	6,850	6,900	6,900	6,880	6,890	6,920	7,030	6,980
	FTRS "Regulars" *	330	330	180	150	160	160	170	180	170	170	180
	Liability	35,790	35,790	35,700	30,530	30,490	30,470	30,450	30,440	30,420	30,400	30,380
	Regular Surplus/Deficit	-620	-620	-450	750	380	200	90	~	80	130	30
	Regular Surplus/Deficit (%)	-1.7%	-1.7%	-1.3%	2.4%	1.2%	0.6%	0.3%	0.0%	0.3%	0.4%	0.1%
	Total Surplus/Deficit	-290	-290	-280	890	530	360	270	170	250	300	210
	Total Surplus/Deficit (%)	-0.8%	-0.8%	-0.8%	2.9%	1.7%	1.2%	0.9%	0.6%	0.8%	1.0%	0.7%
Officers		6,640	6,660	6,620	6,240	6,150	6,120	6,110	6,080	6,080	6,100	6,080
	Royal Navy (inc Careers)	5,720	5,730	5,720	5,400	5,340	5,300	5,290	5,280	5,280	5,270	5,250
	RM GS (inc Careers)	770	770	790	750	730	730	720	720	710	740	740
	RM Band	10	10	10	10	10	10	10	10	10	10	10
	Transfer Trainees	20	20	30	10	10	10	10	10	10	10	10
	FTRS "Regulars" *	120	120	80	60	60	70	70	80	70	70	80
	Liability	6,630	6,630	6,610	5,810	5,850	5,860	5,860	5,860	5,860	5,860	5,860
	Surplus/Deficit	10	30	10	420	300	260	250	220	210	240	230
	Surplus/Deficit (%)	0.2%	0.4%	0.1%	7.3%	5.1%	4.4%	4.3%	3.7%	3.7%	4.1%	3.9%
Ratings		28,860	28,850	28,800	25,190	24,860	24,710	24,610	24,530	24,590	24,600	24,510
	XR	5,680	5,680	5,530	4,720	4,590	4,550	4,540	4,520	4,530	4,510	4,490
	XSM	880	880	860	790	780	780	780	780	780	770	770
	XAV	790	790	820	730	710	700	690	690	700	700	700
	Eng GS	5,240	5,240	5,100	4,100	3,980	3,940	3,920	3,890	3,860	3,830	3,810
	Eng SM	2,140	2,140	2,150	2,060	2,040	2,020	2,000	2,010	2,000	2,000	2,000
	Air Eng	3,470	3,460	3,530	3,110	3,090	3,070	3,040	3,030	3,040	3,060	3,040
	Logistics	3,230	3,230	3,180	2,680	2,610	2,590	2,560	2,550	2,550	2,530	2,530
	Medical	1,000	1,000	980	920	920	910	920	920	900	910	910
	RM GS	5,840	5,840	6,130	5,630	5,700	5,700	5,680	5,700	5,750	5,820	5,780
	RM Band	320	320	330	340	340	340	340	340	340	340	340
	FTRS "Regulars" *	200	200	100	90	90	90	100	100	100	100	110
	Unknown	-	-	-	-	-	-	-	-	-	-	-
	Transfer Trainees	70	60	80	30	20	20	20	~	20	20	30
	Liability	29,160	29,160	29,090	24,720	24,630	24,610	24,590	24,570	24,560	24,540	24,520
	Surplus/Deficit	-310	-320	-290	470	230	100	10	-40	30	60	-20
	Surplus/Deficit (%)	-1.1%	-1.1%	-1.0%	1.9%	1.0%	0.4%	0.1%	-0.2%	0.1%	0.2%	-0.1%

Feb-14 Edition.

From Jan 10 and elsewhere in this document, Liability split by Officer/Rating, Branch & Spec is taken from the relevant Planning Liability (currently PL 1-13) scaled to DP. Monthly liability figures are calculated using a straight line interpolation between the relevant PL April points (currently April 13 and April 14).

*From Jun 09 in this table only, the FTRS Strength has been split into those that are counted against the Regular Liability (FTRS "Regulars"), and those that are not (FTRS "Non-Regulars").

1b Summary of Naval Service Strength by Service and Arm

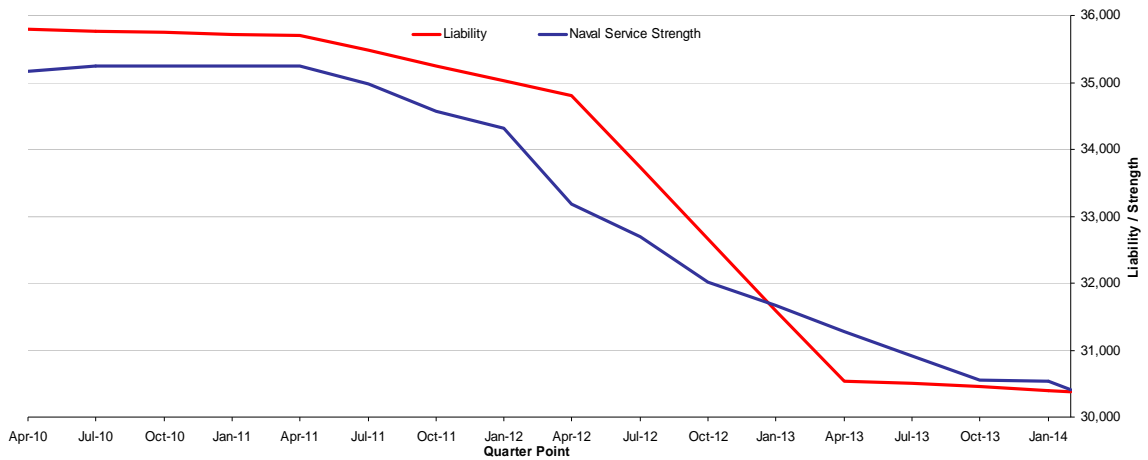
Naval Service	30,590
Royal Navy	23,570
Royal Marines	7,020

Officers Ratings		
Naval Service	6,080	24,510
Royal Navy	5,330	18,240
Royal Marines	760	6,260

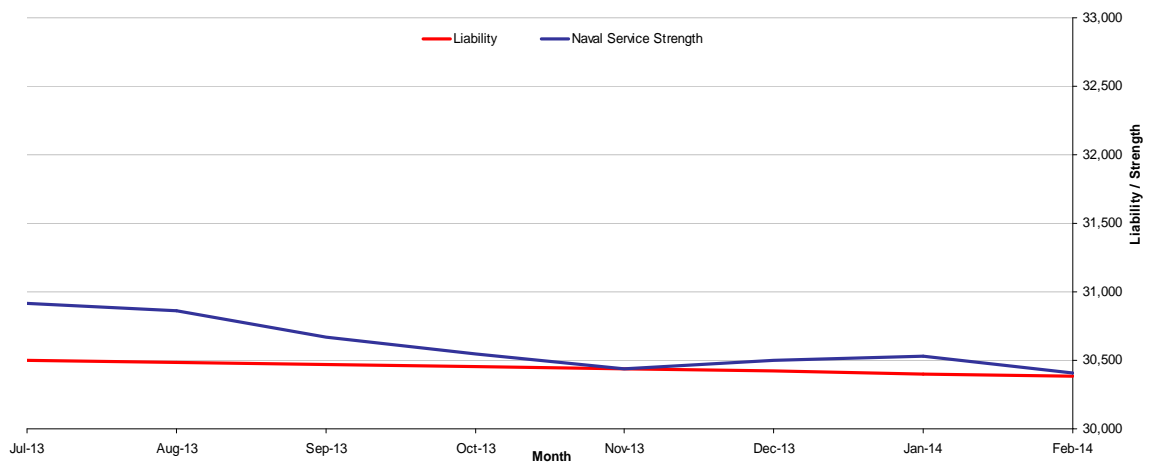
	GS	SM	FAA
Naval Service	21,300	4,190	5,100
Royal Navy	14,370	4,190	5,010
Royal Marines	6,930	-	90

The Strength shown is the total trained Regular and FTRS Regular Personnel
Naval Service figures are the Royal Navy and Royal Marines Combined

1c Historic Trained Regular RNS Strengths and Liability by Quarter



1d Recent Trained Regular RNS Strengths and Liability by Month



2a

Trained Regular Officer Strengths* and Liability** by Branch, Specialisation and Arm

Branch	Specialisation	GS	SM	FAA	Total	Liability	Surplus/Deficit
Total		3,850	890	1,200	5,940	5,860	80
Warfare		1,380	320	880	2,570	2,570	~
	Air Traffic Control	-	-	80	80		
	Aviation	-	-	40	40		
	Communicators	20	-	-	20		
	Intelligence Officer	120	-	-	120		
	Fighter Controller	40	-	-	40		
	General Service Warfare	350	-	-	350		
	HM	160	-	-	160		
	Mine Clearance Diver	70	-	-	70		
	Mine Warfare	30	-	-	30		
	Observer	-	-	330	330		
	Pilot	-	-	420	420		
	PWO	120	-	-	120		
	PWO(A)	190	-	-	190		
	PWO(C)	70	-	-	70		
	PWO(N)	80	-	-	80		
	PWO(U)	110	-	-	110		
	RN Police	20	-	-	20		
	Submariner	-	320	-	320		
	Unspecified	-	-	-	-		
Engineer		890	470	280	1,640	1,580	60
	Air Engineer	-	-	280	280		
	E(IS)	60	-	-	60		
	E(IS SM)	-	~	-	~		
	E(TM)	200	-	-	200		
	E(TM SM)	-	20	-	20		
	Marine Engineer	280	-	-	280		
	Marine Engineer (SM)	-	250	-	250		
	Weapons Engineer	360	-	-	360		
	Weapons Engineer (SM)	-	200	-	200		
	Unspecified	-	-	-	-		
Logistics		390	100	-	490	490	10
	Barrister	40	~	-	40		
	CMA	20	~	-	20		
	Logistics	330	90	-	430		
	Logistics Family Services	~	-	-	~		
Medical		260	-	-	260	200	50
Medical Services		60	-	-	60	70	-10
Dental Services		50	-	-	50	70	-10
QARNNS		60	-	-	60	100	-30
Chaplain		60	-	-	60	60	~
Royal Marines		700	-	40	740	730	10
	Band Service	10	-	-	10		
	General Service	690	-	-	690		
	Pilot	-	-	40	40		

* The Trained Strength shown in this table does not include the Transfer Trainee Strength, hence the slightly lower figures.

** Smoothed Planning Liability 1-13 has been used and scaled to the interpolated monthly DP13 total figure.

Feb-14 Edition.

2b

Trained Regular Rating Strengths* and Liability** by Branch, Specialisation and Arm

Branch	Specialisation	GS	SM	FAA	Total	Liability	Surplus/Deficit
Total		17,300	3,250	3,820	24,370	24,520	-150
XR		4,410	-	90	4,490	4,690	-200
	WS	440	-	-	440	-	-
	WS(AWT)	340	-	-	340	-	-
	WS(AWW)	320	-	-	320	-	-
	WS(UW)	240	-	-	240	-	-
	WS(EW)	350	-	-	350	-	-
	CIS	730	-	-	730	-	-
	HM	20	-	-	20	-	-
	HM(H)	90	-	-	90	-	-
	HM(M)	-	-	90	90	-	-
	Mine Warfare	280	-	-	280	-	-
	Diver	330	-	-	330	-	-
	Seaman Specialist	600	-	-	600	-	-
	Weapons Analyst	~	-	-	~	-	-
	PT	210	-	-	210	-	-
	RN Police	230	-	-	230	-	-
	CT	230	-	-	230	-	-
	Unspecified	-	-	-	-	-	-
XSM		-	770	-	770	760	10
	Coxswain (SM)	-	30	-	30	-	-
	WS(SSM)	-	310	-	310	-	-
	WS(TSM)	-	220	-	220	-	-
	CISSM	-	210	-	210	-	-
XAV		-	-	700	700	810	-110
	Aircrewman	-	-	100	100	-	-
	NA(AC)	-	-	120	120	-	-
	NA(AH)	-	-	380	380	-	-
	NA(PHOT)	-	-	60	60	-	-
	RM Aircrewman	-	-	50	50	-	-
	Unspecified	-	-	-	-	-	-
Engineer General Service		3,810	-	-	3,810	3,960	-140
	MEM	170	-	-	170	-	-
	WEM	40	-	-	40	-	-
	ET(ME)	2,140	-	-	2,140	-	-
	ET(WE)	1,460	-	-	1,460	-	-
	ETS	-	-	-	-	-	-
	Unspecified	-	-	-	-	-	-
Engineer Submariner		-	2,000	-	2,000	1,980	20
	ET(MESM)	-	1,160	-	1,160	-	-
	ET(WESM)	-	820	-	820	-	-
	MEM	-	20	-	20	-	-
	WEM	-	~	-	~	-	-
Air Engineer		-	-	3,040	3,040	2,940	100
	AEA	-	-	110	110	-	-
	AEM	-	-	140	140	-	-
	AET	-	-	2,640	2,640	-	-
	NA(SE)	-	-	140	140	-	-
Logistics		2,120	400	-	2,530	2,470	60
	Caterer	130	20	-	150	-	-
	Chef	470	130	-	600	-	-
	Family Service	30	-	-	30	-	-
	Steward	320	80	-	400	-	-
	Supply Chain	490	100	-	590	-	-
	Writer	680	80	-	750	-	-
	Unspecified	-	-	-	-	-	-
Medical		830	80	-	910	940	-30
	Dental Hyg	10	-	-	10	-	-
	Dental SA	90	-	-	90	-	-
	Med Assist	480	80	-	560	-	-
	Med Tech	20	-	-	20	-	-
	Naval Nurse	170	-	-	170	-	-
	RM Med Assist	60	-	-	60	-	-
	Unspecified	-	-	-	-	-	-
Marines (excl MA & Acmn)		6,120	-	-	6,120	5,970	150
	Band	270	-	-	270	-	-
	Bugler	70	-	-	70	-	-
	General Service	5,780	-	-	5,780	-	-

* The Trained Strength shown in this table does not include the Transfer Trainee Strength, hence the slightly lower figures.

** Smoothed Planning Liability 1-13 has been used and scaled to the interpolated monthly DP13 total figure.

2c

Trained FTRS Officer Strengths by Branch, Specialisation and Arm

Branch	Specialisation	GS	SM	FAA	Total
Total		120	10	10	140
Warfare		40	10	10	60
	Air Traffic Control	-	-	~	~
	Aviation	-	-	~	~
	Communications	~	-	-	~
	Intelligence Officer	-	-	-	-
	Fighter Controller	-	-	-	-
	General Service Warfare	10	-	-	10
	HM	~	-	-	~
	Mine Clearance Diver	~	-	-	~
	Mine Warfare	10	-	-	10
	Observer	-	-	~	~
	Pilot	-	-	10	10
	PWO	~	-	-	~
	PWO(A)	10	-	-	10
	PWO(C)	~	-	-	~
	PWO(N)	-	-	-	-
	PWO(U)	10	-	-	10
	RN Police	-	-	-	-
	Submariner	-	10	-	10
	Unspecified	~	-	-	~
Engineer		10	~	~	10
	Air Engineer	-	-	~	~
	E(IS)	~	-	-	~
	E(IS SM)	-	-	-	-
	E(TM)	~	-	-	~
	E(TM SM)	-	-	-	-
	Marine Engineer	~	-	-	~
	Marine Engineer (SM)	-	~	-	~
	Weapons Engineer	~	-	-	~
	Weapons Engineer (SM)	-	~	-	~
	Unspecified	-	-	-	-
Logistics		10	-	-	10
	Barrister	-	-	-	-
	CMA	-	-	-	-
	Logistics	10	-	-	10
	Logistics Family Services	-	-	-	-
Medical		-	-	-	-
Medical Services		-	-	-	-
Dental Services		-	-	-	-
QARNNS		~	-	-	~
Chaplain		~	-	-	~
Careers		~	-	-	~
Royal Marines		10	-	-	10
	Band Service	-	-	-	-
	General Service	10	-	-	10
	Pilot	-	-	-	-
RNR		40	-	-	40
RMR		-	-	-	-

2d

Trained FTRS Rating Strengths by Branch, Specialisation and Arm

Branch	Specialisation	GS	SM	FAA	Total
Total		300	40	10	360
XR		60	-	~	70
	WS	-	-	-	-
	WS(AWT)	~	-	-	~
	WS(AWW)	10	-	-	10
	WS(UW)	-	-	-	-
	WS(EW)	~	-	-	~
	CIS	10	-	-	10
	HM	-	-	-	-
	HM(H)	-	-	-	-
	HM(M)	-	-	~	~
	Mine Warfare	~	-	-	~
	Diver	~	-	-	~
	Seaman Specialist	20	-	-	20
	Weapons Analyst	-	-	-	-
	PT	~	-	-	~
	RN Police	10	-	-	10
	CT	~	-	-	~
	Unspecified	-	-	-	-
XSM		-	~	-	~
	Coxswain (SM)	-	~	-	~
	WS(SSM)	-	~	-	~
	WS(TSM)	-	~	-	~
	CISSM	-	~	-	~
XAV		-	-	~	~
	Aircrewman	-	-	-	-
	NA(AC)	-	-	~	~
	NA(AH)	-	-	~	~
	NA(PHOT)	-	-	-	-
	RM Aircrewman	-	-	-	-
	Unspecified	-	-	-	-
Engineer General Service		10	-	-	10
	MEM	~	-	-	~
	WEM	~	-	-	~
	ET(ME)	~	-	-	~
	ET(WE)	~	-	-	~
	ETS	-	-	-	-
	Unspecified	-	-	-	-
Engineer Submariner		-	40	-	40
	ET(MESM)	-	20	-	20
	ET(WESM)	-	10	-	10
	MEM	-	-	-	-
	WEM	-	-	-	-
Air Engineer		-	-	~	~
	AEA	-	-	~	~
	AEM	-	-	~	~
	AET	-	-	-	-
	NA(SE)	-	-	~	~
Logistics		20	-	-	20
	Caterer	~	-	-	~
	Chef	-	-	-	-
	Family Service	-	-	-	-
	Steward	-	-	-	-
	Supply Chain	10	-	-	10
	Writer	10	-	-	10
	Unspecified	-	-	-	-
Medical		~	-	-	~
	Dental Hyg	-	-	-	-
	Dental SA	-	-	-	-
	Med Assist	~	-	-	~
	Naval Nurse	-	-	-	-
	RM Med Assist	-	-	-	-
	Med Tech	-	-	-	-
	Unspecified	-	-	-	-
Marines (excl MA & Acmn)		50	-	-	50
	Band	-	-	-	-
	Bugler	-	-	-	-
	General Service	50	-	-	50
RNR		~	-	-	~
RMR		10	-	-	10
Careers		160	-	-	160

3a

Trained* Regular Officer Strengths and Liability** by Branch and Paid Rank***

Branch		OF7 and above	OF-6	OF-5	OF-4	OF-3	OF-2	OF-1	Total
Total	Strength	40	80	270	1,020	2,020	2,470	110	6,000
	Liability	30	70	260	980	1,910	2,610	-	5,860
	Surplus / Deficit	10	10	10	50	100	-150	110	140
Warfare	Strength	20	30	110	360	890	1,160	60	2,630
	Liability	20	30	100	360	870	1,190	-	2,570
	Surplus / Deficit	10	-	-	-	20	-30	60	60
	% Surplus / Deficit	31.2%	-11.7%	4.1%	0.7%	1.8%	-2.4%	-	2.2%
Engineer	Strength	10	20	80	290	560	690	-	1,640
	Liability	10	20	80	240	520	710	-	1,580
	Surplus / Deficit	-	-	-	40	40	-20	-	60
	% Surplus / Deficit	-11.4%	-3.7%	1.2%	17.2%	7.6%	-2.4%	-	4.0%
Logistics	Strength	-	10	20	90	160	200	10	490
	Liability	-	10	20	90	160	210	-	490
	Surplus / Deficit	-	-	-	-	-	-10	10	10
	% Surplus / Deficit	-	53.5%	6.8%	-1.4%	1.4%	-3.8%	-	1.1%
Medical	Strength	-	-	20	90	100	40	-	260
	Liability	-	-	10	80	70	40	-	200
	Surplus / Deficit	-	-	-	10	30	10	-	50
	% Surplus / Deficit	2.6%	36.8%	22.7%	8.5%	51.7%	23.1%	-	26.9%
Dental	Strength	-	-	-	20	20	10	-	50
	Liability	-	-	-	20	20	20	-	70
	Surplus / Deficit	-	-	-	-	-	-10	-	-10
	% Surplus / Deficit	-	-	28.2%	-18.7%	17.2%	-61.4%	-	-19.9%
Medical Services	Strength	-	-	-	10	20	30	-	60
	Liability	-	-	-	10	20	40	-	70
	Surplus / Deficit	-	-	-	-	-	-	-	-10
	% Surplus / Deficit	-	-	2.6%	-27.8%	-7.2%	-11.9%	-	-12.3%
QARNNS	Strength	-	-	-	10	20	30	-	60
	Liability	-	-	-	10	30	50	-	100
	Surplus / Deficit	-	-	-	-	-10	-30	-	-30
	% Surplus / Deficit	-	-	-10.7%	23.4%	-27.3%	-49.0%	-	-33.9%
Chaplain	Strength	-	-	-	60	-	-	-	60
	Liability	-	-	-	60	-	-	-	60
	Surplus / Deficit	-	-	-	-	-	-	-	-
	% Surplus / Deficit	2.6%	-	-100.0%	2.7%	-	-	-	2.7%
RM General Service	Strength	-	10	30	120	240	290	40	740
	Liability	-	10	30	120	220	350	-	720
	Surplus / Deficit	see note 1	-	-	-	20	-60	40	10
	% Surplus / Deficit	see note 1	53.0%	2.9%	-0.4%	8.6%	-16.2%	-	2.0%
RM Band	Strength	-	-	-	-	-	-	-	10
	Liability	-	-	-	-	-	-	-	10
	Surplus / Deficit	-	-	-	-	-	-	-	-
	% Surplus / Deficit	-	-	-	2.6%	2.6%	2.6%	-	2.6%
Careers/Other	Strength	-	-	-	-	-	-	-	-
	Liability	-	-	-	-	-	-	-	-
	Surplus / Deficit	-	-	-	-	-	-	-	-
	% Surplus / Deficit	-	-	-	-	-	-	-	-
Unspecified	Strength	-	-	-	-	-	-	-	-

* The Trained Strength shown in this table does not include the Transfer Trainee Strength, hence the slightly lower figures.

** Smoothed Planning Liability 1-13 has been used and scaled to the interpolated monthly DP13 total figure.

*** Figures exclude FTRS personnel in regular posts.

¹ At OF7+ RM GS Officers are assigned under the same regime as their RN counterparts, occupying common appointments where liability is attributable across the Naval Service OF7+ population.

3b Trained* Regular Rating Strengths and Liability by Branch and Paid Rank*****

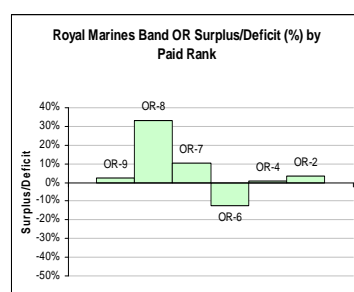
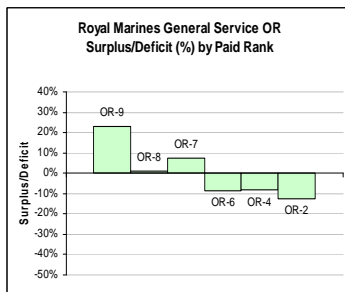
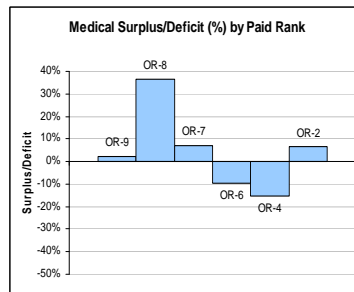
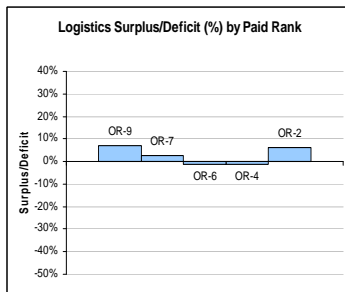
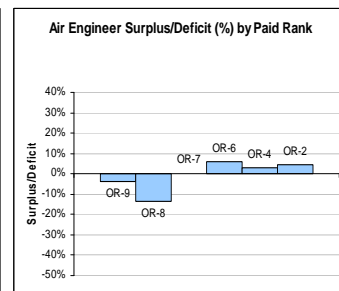
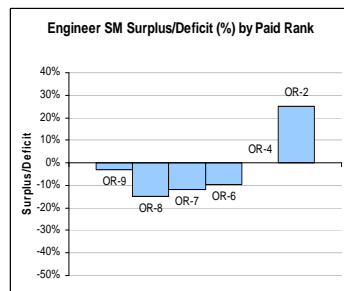
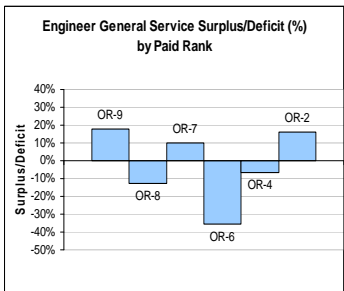
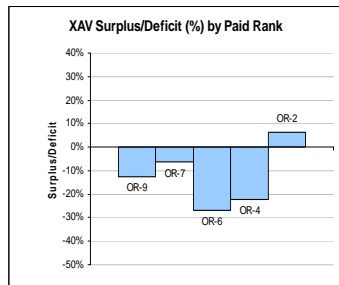
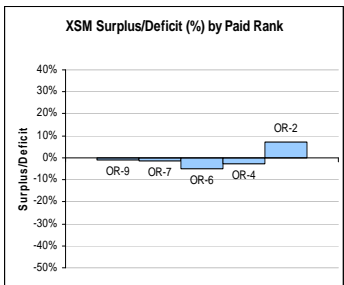
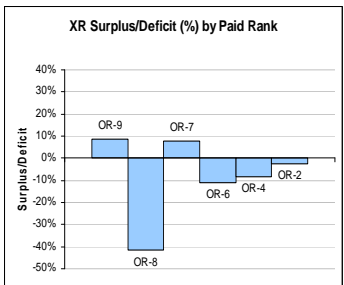
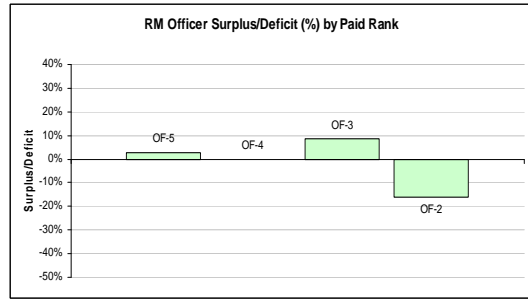
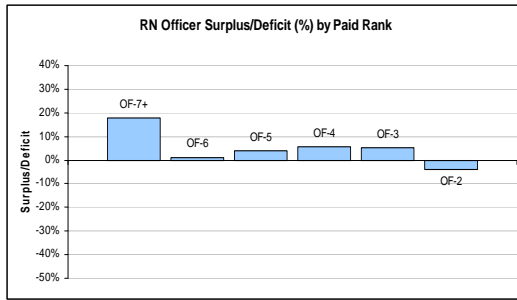
Branch		OR-9	OR-8	OR-7	OR-6	OR-4	OR-3	OR-2	Total	
Total	Strength	650	680	3,120	3,690	5,700	660	9,870	24,370	
	Liability	610	750	3,030	4,260	6,060	^{see note 2} 9,820		24,520	
	Surplus / Deficit	50	-70	90	-560	-360	660	50	-150	
	% Surplus / Deficit									
XR	Strength	150	10	580	760	1,200	-	1,780	4,490	
	Liability	140	20	540	860	1,310	-	1,830	4,690	
	Surplus / Deficit	10	-10	40	-100	-110	-	-40	-200	
	% Surplus / Deficit	8.9%	-41.4%	7.8%	-11.1%	-8.2%	-	-2.4%	-4.2%	
XSM	Strength	30	-	100	110	170	-	360	770	
	Liability	30	-	100	120	180	-	340	760	
	Surplus / Deficit	~	-	~	-10	~	-	20	10	
	% Surplus / Deficit	-1.0%	-	-1.4%	-5.0%	-2.6%	-	7.2%	1.5%	
XAV	Strength	30	-	80	150	210	-	230	700	
	Liability	30	-	90	200	270	-	210	810	
	Surplus / Deficit	~	-	-10	-50	-60	-	10	-110	
	% Surplus / Deficit	-12.6%	-	-6.2%	-26.9%	-22.1%	-	6.5%	-13.7%	
EGS	Strength	150	210	740	600	780	-	1,340	3,810	
	Liability	130	240	670	930	840	-	1,150	3,960	
	Surplus / Deficit	20	-30	70	-330	-60	-	190	-140	
	% Surplus / Deficit	17.8%	-12.9%	10.2%	-35.8%	-6.9%	-	16.3%	-3.6%	
ESM	Strength	60	170	440	250	400	-	680	2,000	
	Liability	60	200	500	280	400	-	540	1,980	
	Surplus / Deficit	~	-30	-60	-30	~	-	140	20	
	% Surplus / Deficit	-3.0%	-15.0%	-11.8%	-9.6%	-0.1%	-	25.0%	0.9%	
EAE	Strength	50	60	440	650	780	-	1,060	3,040	
	Liability	50	60	440	610	760	-	1,010	2,940	
	Surplus / Deficit	~	-10	~	40	20	-	50	100	
	% Surplus / Deficit	-3.7%	-13.3%	0.2%	6.1%	3.1%	-	4.5%	3.3%	
LOGS	Strength	60	-	220	390	750	-	1,120	2,530	
	Liability	50	-	210	400	760	-	1,050	2,470	
	Surplus / Deficit	~	-	10	-10	-10	-	70	60	
	% Surplus / Deficit	7.1%	-	2.9%	-1.4%	-1.5%	-	6.3%	2.4%	
MED	Strength	30	~	120	180	270	10	310	910	
	Liability	30	~	110	190	320	-	290	940	
	Surplus / Deficit	~	~	10	-20	-50	10	20	-30	
	% Surplus / Deficit	2.3%	36.7%	7.1%	-9.8%	-15.2%	0.0%	6.7%	-3.3%	
RMGS	<i>Excludes RM Med Assistant, RM Aircrewman, RM Band and RM Careers Service</i>									
	Strength	90	220	380	550	1,060	650	2,810	5,780	
	Liability	70	220	360	610	1,160	^{see note 2} 3,220		5,640	
	Surplus / Deficit	20	~	30	-50	-90	650	-400	140	
RM Band	Strength	~	10	30	50	60	-	190	340	
	Liability	~	10	30	50	60	-	180	340	
	Surplus / Deficit	~	~	~	-10	~	-	10	10	
	% Surplus / Deficit	2.5%	33.3%	10.4%	-12.6%	0.8%	-	3.6%	1.9%	
Unspecified	Strength	-	-	-	-	-	-	-	-	
CAPPS	Liability	-	-	-	-	-	-	-	-	

* The Trained Strength shown in this table does not include the Transfer Trainee Strength, hence the slightly lower figures.

** Smoothed Planning Liability 1-13 has been used and scaled to the interpolated monthly DP13 total figure.

*** Figures exclude FTRS personnel in regular posts.

² Royal Marines are the only part of the Naval Service to currently contain OR3 strength. As no separate liability for OR3 is produced for the Naval Service, the liability for OR2 also includes OR3.



3e Trained Officer FTRS Strength by Branch and Paid Rank

Branch	OF7+	OF6	OF5	OF4	OF3	OF2	OF1	Total
Total	-	-	~	40	70	20	-	140
Warfare	-	-	~	20	30	~	-	60
Engineer	-	-	~	~	~	~	-	10
Logistics	-	-	~	10	~	~	-	10
Medical	-	-	-	-	-	-	-	-
Medical Services	-	-	-	-	-	-	-	-
Dental	-	-	-	-	-	-	-	-
QARNNS	-	-	-	-	~	~	-	~
Chaplain	-	-	-	~	-	-	-	~
RM General Service	-	-	~	~	~	~	-	10
RM Band	-	-	-	-	-	-	-	-
RNR	-	-	~	~	20	10	-	40
RMR	-	-	-	-	-	-	-	-
Careers/Other	-	-	-	-	-	~	-	~

Feb-14 Edition.

3f Trained Rating FTRS Strength by Branch and Paid Rank

Branch	OR9	OR8	OR7	OR6	OR4	OR3	OR2	Total
Total	40	20	130	130	20	~	20	360
XR	10	~	30	20	10	-	~	70
XSM	~	-	~	-	-	-	-	~
XAV	-	-	~	~	-	-	-	~
EGS	~	~	~	-	-	-	-	10
ESM	-	10	20	10	~	-	-	40
EAE	~	-	~	~	-	-	-	10
LOGS	~	-	10	~	~	-	-	20
MED	-	-	~	-	-	-	-	~
RM GS	-	~	10	10	10	~	10	50
<i>Excludes RM Med Assistant, RM Aircrewman, RM Band and RM Careers Service</i>								
RM Band	-	-	-	-	-	-	-	-
RNR	-	-	~	-	-	-	-	~
RMR	-	-	-	~	~	-	~	10
Career	20	10	50	80	-	-	-	160
Unspecified	-	-	-	-	-	-	-	-

Feb-14 Edition.

**Trained* Regular Officer General Service Strengths
4a (GS) by Branch and Specialisation and Paid Rank**

Branch	Specialisation	OF-7 and above	OF-6	OF-5	OF-4	OF-3	OF-2	OF-1	Total
Total		20	50	170	680	1,320	1,520	90	3,850
Warfare		10	20	60	180	480	590	40	1,380
	Communications	-	-	-	-	10	20	-	20
	Intelligence Officer	-	-	-	~	50	70	-	120
	Fighter Controller	-	-	-	-	10	30	~	40
	General Service Warfare	-	-	-	-	30	290	30	350
	HM	-	-	~	20	60	80	~	160
	Mine Clearance Diver	-	-	-	-	40	40	-	70
	Mine Warfare	-	-	-	~	10	20	-	30
	PWO	-	-	-	~	90	30	-	120
	PWO(A)	~	~	30	70	80	~	-	190
	PWO(C)	~	~	10	20	30	~	-	70
	PWO(N)	~	~	10	20	30	10	-	80
	PWO(U)	~	~	10	40	50	-	-	110
	RN Police	-	-	-	~	10	10	-	20
	Unspecified	-	-	-	-	-	-	-	-
Engineer		~	10	40	150	320	370	-	890
	E(IS)	-	-	~	10	20	20	-	60
	E(TM)	-	~	~	20	70	100	-	200
	Marine Engineer	~	~	10	50	100	110	-	280
	Weapons Engineer	-	~	20	60	120	150	-	360
	Unspecified	-	-	-	-	-	-	-	-
Logistics		~	10	20	60	130	170	10	390
	Barrister	~	~	~	10	10	10	-	40
	CMA	-	-	-	10	10	-	-	20
	Logistics	-	~	20	40	110	160	10	330
	Logistics Family Services	-	-	-	-	~	~	-	~
Medical		~	~	20	90	100	40	-	260
Medical Services		-	-	~	10	20	30	-	60
Dental Services		-	-	~	20	20	10	-	50
QARNNS		-	-	~	10	20	30	~	60
Chaplain		~	~	-	60	-	-	-	60
Other		-	-	-	-	-	-	-	-
Royal Marines		~	10	30	110	220	280	40	700
	Band Service	-	-	-	~	~	~	-	10
	General Service	~	10	30	110	220	270	40	690

* The Trained Strength shown in this table does not include the Transfer Trainee Strength, hence the slightly lower figures.

Feb-14 Edition.

**Trained* Regular Officer Submarine Strengths
4a (SM) by Branch and Specialisation and Paid Rank**

Branch	Specialisation	OF-7							Total
		and above	OF-6	OF-5	OF-4	OF-3	OF-2	OF-1	
Total		10	10	50	160	270	370	20	890
Warfare		~	~	20	50	90	140	20	320
	Submariner	~	~	20	50	90	140	20	320
Engineer		10	~	30	80	150	200	-	470
	E(IS SM)	-	-	~	~	10	~	-	20
	E(TM SM)	~	~	10	40	80	~	-	150
	Marine Engineer (SM)	~	~	10	40	60	110	-	230
	Weapons Engineer (SM)	-	-	-	-	-	80	-	80
	Unspecified	-	-	-	-	-	-	-	-
Logistics		-	~	~	20	30	40	-	100
	Barrister	-	-	-	~	~	~	-	~
	CMA	-	-	-	~	~	-	-	~
	Logistics	-	~	~	20	30	30	-	90
	Logistics Family Services	-	-	-	-	-	-	-	-
Other		-	-	-	-	-	-	-	-

* The Trained Strength shown in this table does not include the Transfer Trainee Strength, hence the slightly lower figures.

**Trained* Regular Officer Fleet Air Arm Strengths
4a (FAA) by Branch and Specialisation and Paid Rank**

Branch	Specialisation	OF-7							Total
		and above	OF-6	OF-5	OF-4	OF-3	OF-2	OF-1	
Total		~	10	40	180	430	570	~	1,250
Warfare		~	10	30	120	320	440	~	930
	Air Traffic Control	-	-	~	~	20	50	~	80
	Aviation	-	-	-	~	10	30	-	40
	Observer	~	~	10	70	120	120	~	330
	Pilot	~	~	10	40	140	220	-	420
	Unspecified	-	-	~	10	30	20	-	60
Engineer		-	~	10	50	90	120	-	280
	Air Engineer	-	~	10	50	90	120	-	280
Other		-	-	-	-	-	-	-	-
Royal Marines		-	-	~	10	20	20	-	40
General Service	Pilot	-	-	~	10	20	20	-	40

* The Trained Strength shown in this table does not include the Transfer Trainee Strength, hence the slightly lower figures.

**Trained* Regular Rating General Service Strengths
4b (GS)
by Branch and Specialisation and Paid Rank**

Branch	Specialisation	OR-9	OR-8	OR-7	OR-6	OR-4	OR-3	OR-2	Total
Total		480	460	2,020	2,440	4,000	660	7,320	17,390
Warfare		150	10	580	760	1,200	-	1,780	4,490
	WS	-	-	-	-	10	-	430	440
	WS(AWT)	20	-	70	100	150	-	~	340
	WS(AWW)	30	-	70	90	120	-	20	320
	WS(UW)	10	-	40	60	70	-	80	240
	WS(EW)	10	-	40	50	100	-	160	350
	CIS	20	-	80	120	170	-	340	730
	HM	-	-	-	-	-	-	20	20
	HM(H)	~	-	10	10	20	-	40	90
	HM(M)	~	-	10	20	30	-	30	90
	Mine Warfare	10	-	20	50	70	-	140	280
	Diver	10	-	20	50	90	-	160	330
	Seaman Specialist	10	-	40	50	140	-	360	600
	Weapons Analyst	-	-	~	-	-	-	-	~
	PT	10	-	30	60	110	-	-	210
	RN Police	10	-	40	80	100	-	-	230
	CT	10	10	100	40	50	-	10	230
	Unspecified	-	-	-	-	-	-	-	-
Engineer		150	210	740	600	780	-	1,340	3,810
	MEM	20	-	60	80	-	-	-	170
	WEM	10	-	20	20	-	-	-	40
	ET(ME)	70	110	310	300	480	-	880	2,140
	ET(WE)	50	100	340	200	300	-	460	1,460
	ETS	-	-	-	-	-	-	-	-
	Unspecified	-	-	-	-	-	-	-	-
Logistics		60	-	180	330	650	-	910	2,120
	Caterer	20	-	50	60	-	-	-	130
	Steward	-	-	-	~	110	-	200	320
	Chef	-	-	~	50	170	-	240	470
	Writer	20	-	70	110	200	-	280	680
	Supply Chain	20	-	50	80	160	-	180	490
	Family Services	-	-	10	20	-	-	-	30
Med		20	~	110	160	240	10	290	830
	Dental Hyg	-	-	~	~	10	-	-	10
	Dental SA	~	-	~	10	20	-	50	90
	Med Asst	20	-	60	80	120	-	210	480
	Naval Nurse	~	-	30	50	80	-	-	170
	RM Med Asst	-	-	~	10	10	10	30	60
	Med Techn	-	~	10	~	~	-	~	20
Other		-	-	-	-	-	-	-	-
Royal Marines		90	240	410	600	1,120	650	3,000	6,120
RM	RM Band	~	10	30	50	60	-	190	340
	RM GS	90	220	380	550	1,060	650	2,810	5,780

* The Trained Strength shown in this table does not include the Transfer Trainee Strength, hence the slightly lower figures.

**Trained* Regular Rating Submarine Strengths
4b (SM) by Branch and Specialisation and Paid Rank**

Branch	Specialisation	OR-9	OR-8	OR-7	OR-6	OR-4	OR-3	OR-2	Total
Total		100	170	580	450	700	-	1,260	3,250
Warfare		30	-	100	110	170	-	360	770
	Coxswain (SM)	10	-	20	-	-	-	-	30
	WS(SSM)	10	-	30	50	70	-	150	310
	WS(TSM)	10	-	20	20	50	-	110	220
	CJSSM	~	-	20	30	60	-	100	210
	Unspecified	-	-	-	-	-	-	-	-
Engineer		60	170	440	250	400	-	680	2,000
	MEM	-	-	20	-	-	-	-	20
	WEM	-	-	~	-	-	-	-	~
	ET(ME)	30	110	270	130	220	-	400	1,160
	ET(WE)	30	60	160	120	180	-	270	820
	Unspecified	-	-	-	-	-	-	-	-
LOGS		-	-	30	60	100	-	210	400
	Caterer	-	-	10	10	-	-	-	20
	Steward	-	-	-	~	20	-	50	80
	Chef	-	-	10	20	40	-	70	130
	Writer	-	-	~	20	20	-	40	80
	Supply Chain	-	-	10	20	20	-	50	100
	Family Services	-	-	-	-	-	-	-	-
MED		-	-	10	20	30	-	20	80
	Med Asst	~	-	10	20	30	-	20	80
Other		-	-	-	-	-	-	-	-

* The Trained Strength shown in this table does not include the Transfer Trainee Strength, hence the slightly lower figures.

**Trained* Regular Rating Fleet Air Arm Strengths
4b (FAA) by Branch and Specialisation and Paid Rank**

Branch	Specialisation	OR-9	OR-8	OR-7	OR-6	OR-4	OR-3	OR-2	Total
Total		80	60	520	800	1,000	-	1,280	3,740
Warfare		30	-	80	150	210	-	230	700
	Aircrewmen	10	-	20	40	30	-	-	100
	NA(AC)	10	-	20	30	40	-	20	120
	NA(AH)	10	-	20	50	100	-	210	380
	NA(PHOT)	~	-	10	20	30	-	-	60
	RM Aircrewmen	~	-	10	20	20	-	-	50
	Unspecified	-	-	-	-	-	-	-	-
Engineer		50	60	440	650	780	-	1,060	3,040
	AEA	-	-	110	-	-	-	-	110
	AEM	10	-	50	90	-	-	-	140
	AET	40	60	270	540	730	-	1,000	2,640
	NA(SE)	~	-	10	20	50	-	50	140
Other		-	-	-	-	-	-	-	-

* The Trained Strength shown in this table does not include the Transfer Trainee Strength, hence the slightly lower figures.

5a

Untrained Regular Officer Strengths by Branch and Paid Rank

	OF4+	OF3	OF2	OF1	OFD	Total
Total	~	-	210	410	160	790
Warfare	-	-	100	190	120	400
Engineer	-	-	70	80	30	180
Logistics	-	-	10	20	10	50
Medical	-	-	30	50	-	80
Medical Services	-	-	-	~	-	~
Dental	-	-	~	~	-	~
QARNNS	-	-	-	-	-	-
Chaplain	~	-	-	-	-	~
No Spec	-	-	-	-	-	-
RM General Service	-	-	-	70	-	70
RM Band	-	-	-	-	-	-
Careers/Other	-	-	-	-	-	-

Feb-14 Edition.

Note: Midshipmen are counted as OF-D

5b Untrained Regular Rating Strengths by Branch and Paid Rank

	OR6+	OR4	OR3	OR2	Total
Total	-	-	-	2,060	2,060
XR	-	-	-	300	300
WS	-	-	-	80	80
CIS	-	-	-	30	30
HM	-	-	-	10	10
Mine Warfare	-	-	-	40	40
Diver	-	-	-	40	40
Seaman Specialist	-	-	-	80	80
CT	-	-	-	20	20
Unspecified	-	-	-	-	-
XSM	-	-	-	70	70
WS(SSM)	-	-	-	40	40
WS(TSM)	-	-	-	20	20
CISSM	-	-	-	20	20
Unspecified	-	-	-	-	-
XAV	-	-	-	50	50
Aircrewman	-	-	-	~	~
NA(AC)	-	-	-	~	~
NA(AH)	-	-	-	40	40
NA(Phot)	-	-	-	-	-
Unspecified	-	-	-	-	-
EGS	-	-	-	250	250
ET(ME)	-	-	-	160	160
ET(WE)	-	-	-	90	90
Unspecified	-	-	-	-	-
ESM	-	-	-	180	180
ET(MESM)	-	-	-	90	90
ET(WESM)	-	-	-	100	100
Unspecified	-	-	-	-	-
EAE	-	-	-	260	260
AET	-	-	-	250	250
NA(SE)	-	-	-	10	10
Unspecified	-	-	-	-	-
LOGS	-	-	-	130	130
Chef	-	-	-	80	80
Steward	-	-	-	20	20
Supply Chain	-	-	-	20	20
Writer	-	-	-	10	10
Unspecified	-	-	-	-	-
MED	-	-	-	60	60
Dental SA	-	-	-	~	~
Med Asst	-	-	-	40	40
Naval Nurse	-	-	-	20	20
Unspecified	-	-	-	-	-
RM GS	-	-	-	680	680
RM Band	-	-	-	70	70
Band	-	-	-	60	60
Bugler	-	-	-	10	10
Unspecified	-	-	-	-	-
Unknown	-	-	-	-	-

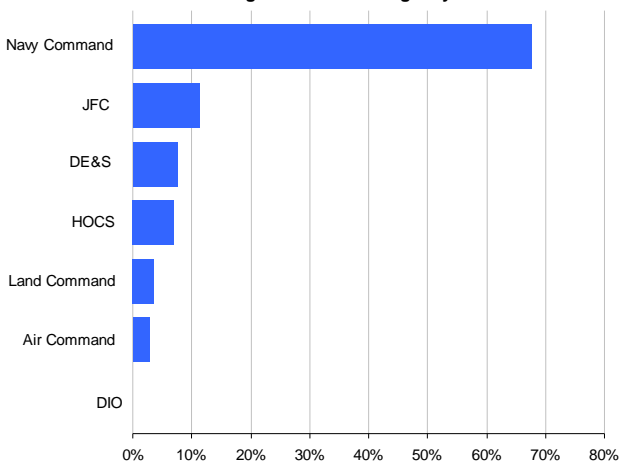
Officers

TLB										Total	% of Total Trained Strength
	OF9	OF8	OF7	OF6	OF5	OF4	OF3	OF2	OF1		
Total	~	10	30	80	270	1,020	2,020	2,470	110	6,000	100.0%
Navy Command	~	~	10	40	110	510	1,380	1,900	100	4,060	67.7%
DE&S	-	~	~	10	40	110	150	140	~	450	7.5%
HOCS	-	~	10	20	60	170	110	40	~	410	6.9%
JFC	-	~	~	10	60	210	240	160	~	680	11.4%
DIO	-	-	-	-	~	~	~	-	-	~	0.1%
Land Command	-	-	-	~	~	10	70	130	-	210	3.6%
Air Command	-	-	-	~	~	20	60	90	-	170	2.9%

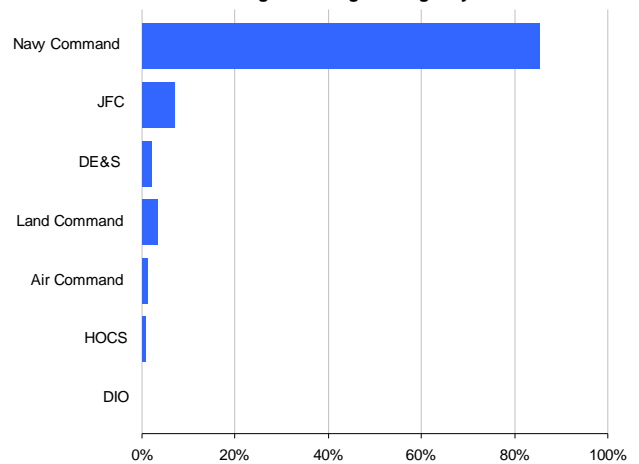
Ratings

TLB								Total	% of Total Trained Strength
	OR9	OR8	OR7	OR6	OR4	OR3	OR2		
Total	650	680	3,120	3,690	5,700	660	9,870	24,370	100.0%
Navy Command	500	550	2,360	2,970	4,830	520	9,090	20,820	85.4%
DE&S	60	40	150	80	90	-	60	480	2.0%
HOCS	10	10	70	50	50	-	20	210	0.9%
JFC	50	50	290	300	470	120	430	1,710	7.0%
DIO	-	-	~	-	~	-	-	~	0.0%
Land Command	20	10	130	200	200	20	260	820	3.4%
Air Command	10	20	120	100	60	-	10	320	1.3%

Trained* Regular Officer Strength by TLB



Trained* Regular Ratings Strength by TLB



* The Trained Strength shown in this table does not include the Transfer Trainee Strength, hence the slightly lower figures.

7a Trained Regular Length of Service by Rank

Royal Navy Officers

Rank	Average LOS on Promotion	Current Average LOS	Average LOS on Exit				
			Overall	VO	TX	OW	
OF7+	Admiral	32.0	33.3	37.3	N/A	37.3	N/A
OF6	Commodore	30.5	31.5	35.3	34.6	36.6	35.5
OF5	Captain	26.2	29.3	33.0	32.7	33.4	N/A
OF4	Commander	20.3	23.5	27.4	26.0	29.7	29.0
OF3	Lt Commander	11.2	16.5	20.3	18.6	23.3	17.9
OF2	Lieutenant	7.8	10.6	11.8	11.6	13.5	9.5
OF1	Sub-Lieutenant	2.4	3.8	3.7	N/A	N/A	3.7
OFD	Midshipman	N/A	N/A	N/A	N/A	N/A	N/A
Overall		14.7	16.0	20.5	19.1	24.3	14.4

Royal Marine Officers

Rank	Average LOS on Promotion	Current Average LOS	Average LOS on Exit				
			Overall	VO	TX	OW	
OF7+	Major General and Above	N/A	32.1	36.0	N/A	36.0	N/A
OF6	Brigadier	26.0	29.6	N/A	N/A	N/A	N/A
OF5	Colonel	23.7	25.9	33.1	33.1	33.2	N/A
OF4	Lt Colonel	16.4	21.1	23.2	21.3	31.0	22.9
OF3	Major	11.8	14.2	13.7	11.9	21.4	11.5
OF2	Captain	6.6	10.6	11.8	11.3	7.8	13.9
OF1	Lieutenant	N/A	3.0	2.0	N/A	N/A	2.0
Overall		11.3	14.1	16.3	14.3	25.5	13.3

Royal Navy Ratings

Rank	Average LOS on Promotion	Current Average LOS	Average LOS on Exit					
			Overall	VO	TX	OW	PTO	
OR-9	Warrant Officer 1st Class	26.1	28.9	31.1	28.9	32.8	29.9	N/A
OR-8	Warrant Officer 2nd Class	21.4	25.5	26.8	26.7	27.1	28.6	23.3
OR-7	Chief Petty Officer	16.4	20.3	22.6	20.6	24.9	23.0	16.1
OR-6	Petty Officer	12.2	16.3	20.0	18.6	22.4	17.2	12.2
OR-4	Leading Hand	6.9	10.4	13.7	11.4	20.9	12.2	6.8
OR-2	Able Rating	N/A	4.6	5.9	5.6	11.0	5.0	4.7
Overall		11.6	11.6	14.6	12.1	23.0	9.2	13.0

Royal Marine Ratings

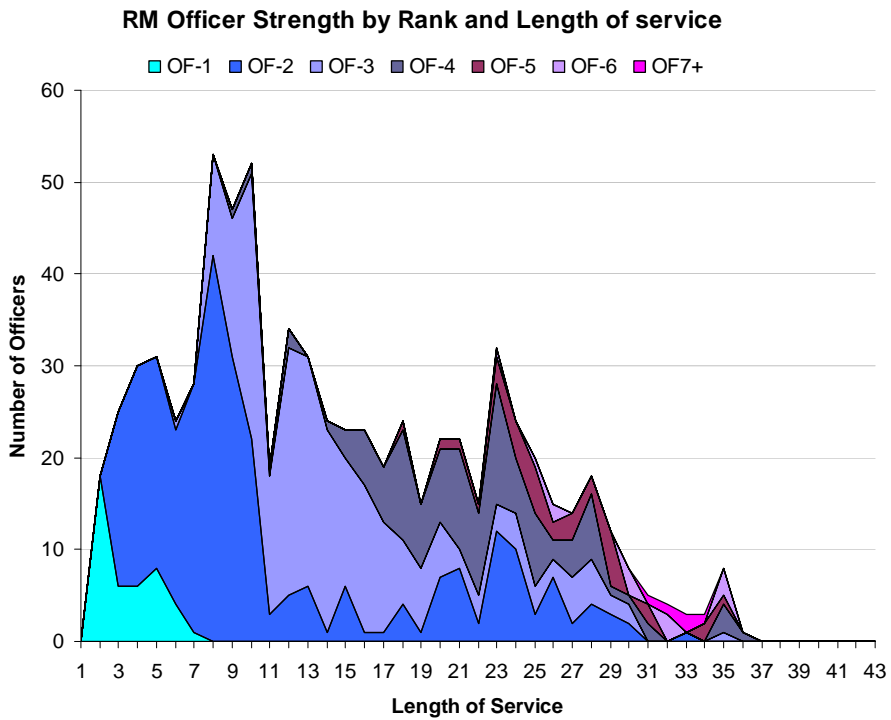
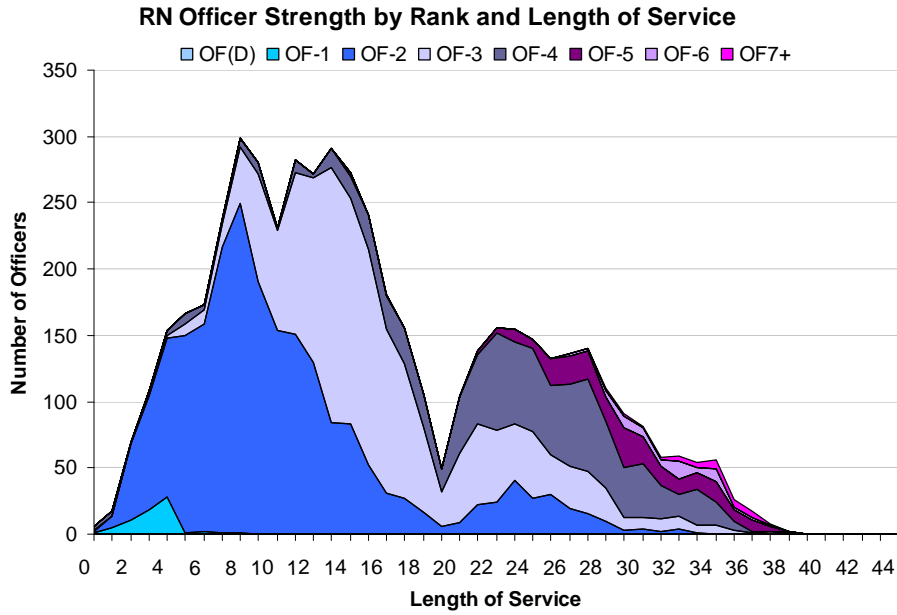
Rank	Average LOS on Promotion	Current Average LOS	Average LOS on Exit					
			Overall	VO	TX	OW	PTO	
OR-9	Warrant Officer 1st Class	23.3	26.9	26.0	21.9	28.7	27.2	24.7
OR-8	Warrant Officer 2nd Class	21.1	23.7	24.6	26.8	25.8	21.8	21.2
OR-7	Colour Sergeant	16.4	19.9	22.7	22.4	25.5	20.6	16.8
OR-6	Sergeant	12.4	14.7	18.9	20.3	20.8	15.9	15.0
OR-4	Corporal	7.9	10.0	13.7	10.6	22.6	12.3	N/A
OR-3	Lance Corporal	N/A	6.4	N/A	N/A	N/A	N/A	N/A
OR-2	Marine	N/A	4.4	6.9	6.2	10.2	7.6	4.2
Overall		11.9	8.8	10.8	8.3	19.1	9.6	14.9

Notes

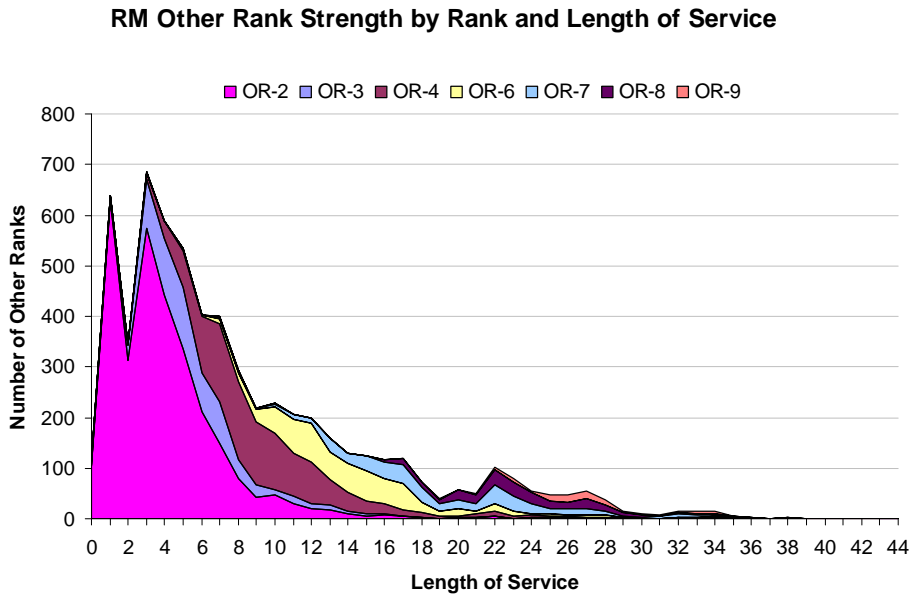
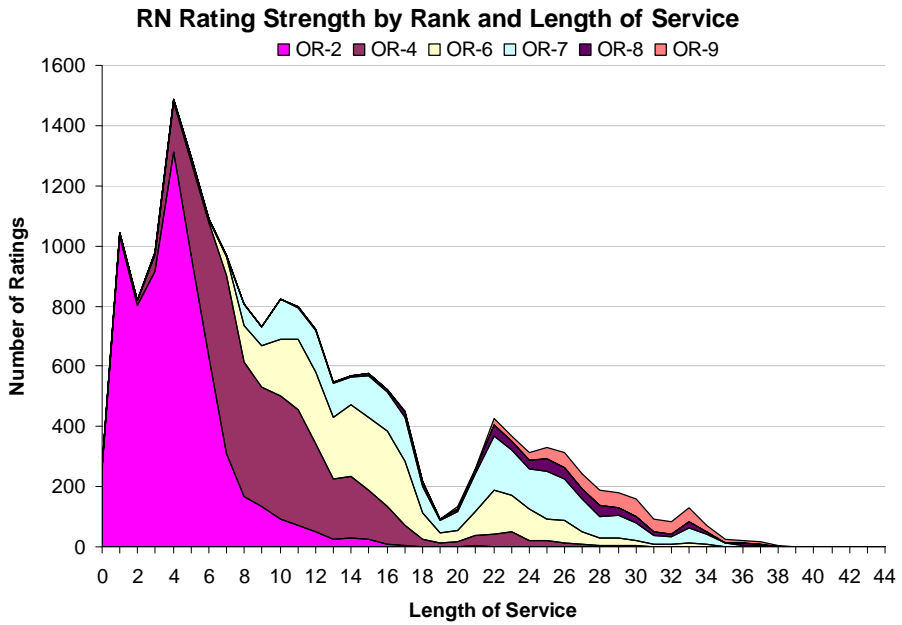
- 1 Flows data are for the last 12 months
- 2 LOS is taken from entry into the Naval Service
- 3 RN Rating and RM Other Rank exits include Promotion to Officer
- 4 Paid rank has been used for the current average LOS, but all other calculations feature substantive rank

Key

- VO Voluntary Outflow
 TX Time Expiry
 OW Other Wastage
 PTO Promotion to Officer



7c Trained Regular RN Rating and RM Other Ranks Length of Service by Paid Rank



	2009/2010		2010/2011		2011/2012		2012/2013		12 Mths to 1st Feb 14		Actual Jan 14
	Nos.	%	Nos.	%	Nos.	%	Nos.	%	Nos.	%	
Total Officers	370	5.7%	390	6.0%	510	7.9%	540	8.5%	460	7.6%	30
Royal Navy Officers											
Total	330	5.7%	340	6.0%	450	8.0%	460	8.3%	400	7.6%	30
Voluntary Outflow	200	3.4%	170	2.9%	180	3.2%	200	3.7%	230	4.3%	20
Other Wastage	20	0.4%	30	0.5%	40	0.7%	40	0.7%	40	0.7%	-
Time Expiry	110	1.9%	150	2.6%	170	3.0%	150	2.7%	140	2.6%	10
Redundancy	-	0.0%	-	0.0%	60	1.1%	70	1.2%	-	0.1%	-
Royal Marine Officers											
Total	40	5.2%	50	6.2%	60	7.6%	80	10.5%	60	7.6%	-
Voluntary Outflow	20	3.3%	20	2.4%	20	3.0%	30	4.1%	40	4.8%	-
Other Wastage	10	0.8%	-	0.6%	10	1.0%	10	1.7%	10	1.3%	-
Time Expiry	10	1.1%	20	3.2%	30	3.3%	20	2.9%	10	1.5%	-
Redundancy	-	0.0%	-	0.0%	-	0.3%	10	1.8%	-	0.0%	-
Warfare											
Total	140	5.3%	150	5.4%	200	7.3%	190	7.0%	200	7.3%	10
Voluntary Outflow	90	3.2%	70	2.6%	80	3.0%	80	3.0%	100	3.8%	10
Other Wastage	10	0.3%	10	0.4%	20	0.8%	20	0.7%	20	0.8%	-
Time Expiry	50	1.8%	70	2.4%	80	2.8%	70	2.7%	70	2.7%	-
Redundancy	-	0.0%	-	0.0%	20	0.7%	20	0.5%	-	0.0%	-
Engineer											
Total	130	6.8%	130	6.9%	140	7.7%	150	8.6%	150	8.7%	10
Voluntary Outflow	70	3.9%	70	3.7%	60	3.2%	90	5.0%	100	5.7%	10
Other Wastage	10	0.4%	10	0.3%	10	0.6%	10	0.6%	10	0.4%	-
Time Expiry	50	2.5%	50	2.9%	50	2.9%	50	2.8%	40	2.6%	-
Redundancy	-	0.0%	-	0.0%	20	1.0%	-	0.2%	-	0.0%	-
Logistics											
Total	30	4.8%	30	5.6%	60	10.1%	70	12.7%	20	5.0%	-
Voluntary Outflow	20	3.6%	20	3.1%	20	2.7%	10	2.6%	10	2.8%	-
Other Wastage	-	0.5%	-	0.9%	-	0.3%	-	0.7%	-	0.4%	-
Time Expiry	-	0.7%	10	1.6%	20	2.7%	10	1.3%	10	1.6%	-
Redundancy	-	0.0%	-	0.0%	20	4.3%	40	8.0%	-	0.2%	-
Medical											
Total	10	3.9%	20	6.3%	20	8.5%	30	10.3%	20	8.0%	-
Voluntary Outflow	10	2.2%	10	2.1%	10	3.5%	10	3.3%	10	3.1%	-
Other Wastage	-	0.0%	-	1.4%	-	0.7%	-	1.8%	-	0.4%	-
Time Expiry	-	1.8%	10	2.8%	10	4.3%	10	4.0%	10	3.4%	-
Redundancy	-	0.0%	-	0.0%	-	0.0%	-	1.1%	-	1.1%	-
Dental Services											
Total	-	3.4%	-	6.7%	-	5.2%	-	6.9%	-	7.3%	-
Voluntary Outflow	-	3.4%	-	3.3%	-	1.7%	-	1.7%	-	1.8%	-
Other Wastage	-	0.0%	-	0.0%	-	0.0%	-	0.0%	-	0.0%	-
Time Expiry	-	0.0%	-	3.3%	-	3.5%	-	1.7%	-	5.5%	-
Redundancy	-	0.0%	-	0.0%	-	0.0%	-	3.5%	-	0.0%	-
Medical Services											
Total	-	3.2%	10	12.5%	10	13.8%	-	8.3%	-	6.6%	-
Voluntary Outflow	-	3.2%	-	3.1%	-	7.6%	-	5.0%	-	6.6%	-
Other Wastage	-	0.0%	-	1.6%	-	0.0%	-	1.7%	-	0.0%	-
Time Expiry	-	0.0%	-	7.8%	-	6.1%	-	1.7%	-	0.0%	-
Redundancy	-	0.0%	-	0.0%	-	0.0%	-	0.0%	-	0.0%	-
QARNNS											
Total	10	8.5%	-	3.8%	10	9.3%	10	10.1%	10	13.9%	-
Voluntary Outflow	-	3.6%	-	1.3%	-	4.0%	10	8.6%	-	4.6%	-
Other Wastage	-	2.4%	-	2.5%	-	1.3%	-	0.0%	-	6.2%	-
Time Expiry	-	2.4%	-	0.0%	-	4.0%	-	1.4%	-	3.1%	-
Redundancy	-	0.0%	-	0.0%	-	0.0%	-	0.0%	-	0.0%	-
Chaplain											
Total	-	7.8%	-	4.6%	10	17.0%	-	5.3%	-	1.8%	-
Voluntary Outflow	-	4.7%	-	0.0%	-	6.8%	-	1.8%	-	0.0%	-
Other Wastage	-	0.0%	-	1.5%	-	0.0%	-	0.0%	-	0.0%	-
Time Expiry	-	3.1%	-	3.1%	10	10.2%	-	3.5%	-	1.8%	-
Redundancy	-	0.0%	-	0.0%	-	0.0%	-	0.0%	-	0.0%	-
Other / No Spec *											
Total	-	N/A	-	N/A	-	N/A	-	N/A	-	N/A	-
Voluntary Outflow	-	N/A	-	N/A	-	N/A	-	N/A	-	N/A	-
Other Wastage	-	N/A	-	N/A	-	N/A	-	N/A	-	N/A	-
Time Expiry	-	N/A	-	N/A	-	N/A	-	N/A	-	N/A	-
Redundancy	-	N/A	-	N/A	-	N/A	-	N/A	-	N/A	-
RM GS											
Total	40	5.1%	50	6.3%	60	7.6%	80	10.4%	50	7.3%	-
Voluntary Outflow	20	3.1%	20	2.5%	20	3.1%	30	4.1%	30	4.5%	-
Other Wastage	10	0.9%	-	0.6%	10	1.0%	10	1.6%	10	1.4%	-
Time Expiry	10	1.1%	20	3.2%	20	3.2%	20	2.9%	10	1.5%	-
Redundancy	-	0.0%	-	0.0%	-	0.3%	10	1.8%	-	0.0%	-
RM BS											
Total	-	17.8%	-	0.0%	-	0.0%	-	16.9%	-	26.0%	-
Voluntary Outflow	-	17.8%	-	0.0%	-	0.0%	-	8.5%	-	26.0%	-
Other Wastage	-	0.0%	-	0.0%	-	0.0%	-	8.5%	-	0.0%	-
Time Expiry	-	0.0%	-	0.0%	-	0.0%	-	0.0%	-	0.0%	-
Redundancy	-	0.0%	-	0.0%	-	0.0%	-	0.0%	-	0.0%	-
Career *											
Total	-	N/A	-	N/A	-	N/A	-	N/A	-	N/A	-
Voluntary Outflow	-	N/A	-	N/A	-	N/A	-	N/A	-	N/A	-
Other Wastage	-	N/A	-	N/A	-	N/A	-	N/A	-	N/A	-
Time Expiry	-	N/A	-	N/A	-	N/A	-	N/A	-	N/A	-
Redundancy	-	N/A	-	N/A	-	N/A	-	N/A	-	N/A	-

* No outflow as a percentage of strength is shown for Other/No Spec or Careers
Feb-14 Edition.

9b

Trained Regular Naval Service Rating Outflow

	2009/2010		2010/2011		2011/2012		2012/2013		12 Mths to 1st Feb 14		Actual Jan 14
	Nos.	%	Nos.	%	Nos.	%	Nos.	%	Nos.	%	
Total Ratings	2,260	8.0%	2,450	8.5%	3,360	12.0%	3,290	12.7%	2,870	11.6%	280
Royal Navy Ratings											
Total	1,780	8.1%	1,980	8.9%	2,670	12.4%	2,390	12.1%	2,360	12.7%	220
Voluntary Outflow	910	4.1%	900	4.0%	870	4.0%	1,060	5.3%	1,220	6.5%	120
Other Wastage	380	1.7%	510	2.3%	640	3.0%	410	2.1%	390	2.1%	40
Time Expiry	410	1.9%	490	2.2%	510	2.4%	530	2.7%	640	3.5%	60
Promotion to Officer	80	0.4%	90	0.4%	50	0.2%	50	0.2%	60	0.3%	60
Redundancy	-	0.0%	-	0.0%	590	2.8%	350	1.8%	40	0.2%	-
Royal Marine Ratings											
Total	480	7.8%	460	7.2%	690	10.6%	900	14.6%	510	8.4%	70
Voluntary Outflow	260	4.2%	240	3.8%	380	5.8%	560	9.0%	260	4.3%	30
Other Wastage	120	1.9%	100	1.6%	180	2.8%	190	3.1%	140	2.2%	10
Time Expiry	80	1.3%	100	1.6%	120	1.8%	140	2.3%	90	1.4%	10
Promotion to Officer	20	0.3%	20	0.2%	20	0.3%	10	0.2%	20	0.4%	20
Redundancy	-	0.0%	-	0.0%	-	0.0%	-	0.0%	-	0.0%	-
XR											
Total	480	8.6%	550	9.8%	660	12.2%	710	14.5%	610	13.3%	50
Voluntary Outflow	250	4.4%	270	4.7%	260	4.9%	320	6.6%	340	7.4%	20
Other Wastage	120	2.2%	140	2.5%	170	3.2%	110	2.2%	120	2.5%	10
Time Expiry	100	1.7%	130	2.3%	130	2.4%	130	2.7%	140	3.1%	10
Promotion to Officer	10	0.2%	10	0.2%	-	0.1%	10	0.2%	10	0.2%	-
Redundancy	-	0.0%	-	0.0%	90	1.6%	140	2.7%	-	0.1%	-
XSM											
Total	60	7.1%	80	8.6%	80	9.0%	80	9.4%	80	9.6%	-
Voluntary Outflow	20	2.7%	30	3.7%	30	3.7%	30	4.0%	40	4.9%	-
Other Wastage	20	1.9%	20	1.9%	20	2.0%	20	2.2%	10	1.8%	-
Time Expiry	20	2.3%	20	2.5%	30	3.3%	30	3.2%	20	2.7%	-
Promotion to Officer	-	0.2%	-	0.5%	-	0.0%	-	0.0%	-	0.3%	-
Redundancy	-	0.0%	-	0.0%	-	0.0%	-	0.0%	-	0.0%	-
XAV											
Total	60	7.5%	60	7.4%	80	9.3%	100	13.0%	80	10.9%	-
Voluntary Outflow	30	4.0%	30	3.8%	30	3.5%	20	2.6%	30	4.4%	-
Other Wastage	10	1.8%	10	1.6%	10	1.3%	10	1.8%	10	1.4%	-
Time Expiry	10	1.3%	20	1.8%	10	1.6%	20	2.0%	20	2.7%	-
Promotion to Officer	-	0.4%	-	0.2%	-	0.0%	-	0.5%	-	0.4%	-
Redundancy	-	0.0%	-	0.0%	20	2.8%	50	6.0%	10	2.0%	-
EGS											
Total	490	9.5%	480	9.2%	760	15.6%	600	14.1%	680	17.1%	70
Voluntary Outflow	250	4.8%	220	4.2%	240	5.0%	310	7.3%	420	10.5%	40
Other Wastage	100	1.9%	130	2.6%	180	3.7%	80	1.9%	90	2.3%	10
Time Expiry	120	2.2%	100	1.9%	140	2.8%	120	2.7%	160	3.9%	20
Promotion to Officer	20	0.5%	30	0.5%	20	0.4%	10	0.3%	10	0.4%	-
Redundancy	-	0.0%	-	0.0%	180	3.8%	80	2.0%	-	0.0%	-
ESM											
Total	150	7.0%	170	8.0%	160	7.4%	200	9.5%	240	11.7%	30
Voluntary Outflow	70	3.1%	50	2.4%	60	2.7%	110	5.2%	120	5.8%	20
Other Wastage	30	1.3%	50	2.5%	40	2.1%	30	1.5%	50	2.3%	-
Time Expiry	50	2.2%	50	2.4%	50	2.4%	60	2.7%	70	3.3%	10
Promotion to Officer	10	0.3%	10	0.6%	-	0.2%	-	0.2%	-	0.2%	-
Redundancy	-	0.0%	-	0.0%	-	0.0%	-	0.0%	-	0.0%	-
EAE											
Total	230	6.9%	270	7.6%	460	13.1%	240	7.7%	280	9.1%	30
Voluntary Outflow	150	4.3%	120	3.5%	100	2.7%	110	3.3%	120	4.0%	20
Other Wastage	30	0.8%	50	1.4%	100	2.7%	50	1.6%	50	1.6%	10
Time Expiry	40	1.2%	70	2.1%	60	1.7%	70	2.2%	90	2.9%	10
Promotion to Officer	20	0.6%	20	0.5%	10	0.4%	10	0.2%	20	0.6%	-
Redundancy	-	0.0%	-	0.0%	200	5.6%	10	0.3%	-	0.0%	-

Feb-14 Edition.

	2009/2010		2010/2011		2011/2012		2012/2013		12 Mths to 1st Feb 14		Actual Jan 14
	Nos.	%	Nos.	%	Nos.	%	Nos.	%	Nos.	%	
LOGS											
Total	250	7.8%	290	8.9%	380	12.4%	340	12.2%	310	11.7%	30
Voluntary Outflow	110	3.5%	130	4.1%	110	3.7%	110	3.9%	110	4.3%	10
Other Wastage	60	2.0%	70	2.2%	90	3.0%	80	2.9%	50	1.8%	10
Time Expiry	60	2.0%	80	2.4%	80	2.4%	90	3.3%	120	4.6%	10
Promotion to Officer	10	0.3%	10	0.2%	10	0.2%	-	0.1%	10	0.3%	-
Redundancy	-	0.0%	-	0.0%	100	3.1%	60	2.1%	20	0.7%	-
MED											
Total	70	7.3%	100	10.4%	100	10.6%	120	12.5%	100	10.8%	10
Voluntary Outflow	30	3.4%	50	4.8%	40	4.2%	50	5.1%	40	4.7%	-
Other Wastage	10	1.3%	30	3.2%	30	3.3%	20	2.1%	20	2.3%	-
Time Expiry	20	1.9%	20	1.9%	20	1.9%	20	2.5%	30	2.9%	-
Promotion to Officer	10	0.7%	10	0.6%	10	0.6%	10	1.0%	-	0.5%	-
Redundancy	-	0.0%	-	0.0%	10	0.6%	20	1.8%	-	0.3%	-
Other / No Spec *											
Total	-	<i>N/A</i>	-	<i>N/A</i>	-	<i>N/A</i>	-	<i>N/A</i>	-	<i>N/A</i>	-
Voluntary Outflow	-	<i>N/A</i>	-	<i>N/A</i>	-	<i>N/A</i>	-	<i>N/A</i>	-	<i>N/A</i>	-
Other Wastage	-	<i>N/A</i>	-	<i>N/A</i>	-	<i>N/A</i>	-	<i>N/A</i>	-	<i>N/A</i>	-
Time Expiry	-	<i>N/A</i>	-	<i>N/A</i>	-	<i>N/A</i>	-	<i>N/A</i>	-	<i>N/A</i>	-
Promotion to Officer	-	<i>N/A</i>	-	<i>N/A</i>	-	<i>N/A</i>	-	<i>N/A</i>	-	<i>N/A</i>	-
Redundancy	-	<i>N/A</i>	-	<i>N/A</i>	-	<i>N/A</i>	-	<i>N/A</i>	-	<i>N/A</i>	-
RM GS											
Total	440	7.7%	430	7.2%	680	11.1%	870	15.2%	480	8.4%	60
Voluntary Outflow	250	4.4%	220	3.7%	370	6.1%	540	9.5%	250	4.4%	30
Other Wastage	100	1.7%	100	1.6%	180	2.9%	180	3.2%	130	2.3%	10
Time Expiry	70	1.3%	100	1.6%	110	1.8%	140	2.4%	80	1.3%	10
Promotion to Officer	20	0.3%	20	0.3%	20	0.3%	10	0.1%	20	0.4%	20
Redundancy	-	0.0%	-	0.0%	-	0.0%	-	0.0%	-	0.0%	-
RM BS											
Total	30	8.8%	20	6.7%	10	3.9%	20	5.3%	20	7.0%	10
Voluntary Outflow	10	2.1%	10	3.3%	10	1.8%	10	1.8%	10	1.8%	-
Other Wastage	10	3.6%	-	1.5%	-	0.3%	-	1.5%	-	1.2%	-
Time Expiry	10	2.7%	10	1.8%	10	1.8%	-	1.5%	10	3.5%	-
Promotion to Officer	-	0.3%	-	0.0%	-	0.0%	-	0.6%	-	0.6%	-
Redundancy	-	0.0%	-	0.0%	-	0.0%	-	0.0%	-	0.0%	-
Career *											
Total	-	<i>N/A</i>	-	<i>N/A</i>	-	<i>N/A</i>	-	<i>N/A</i>	-	<i>N/A</i>	-
Voluntary Outflow	-	<i>N/A</i>	-	<i>N/A</i>	-	<i>N/A</i>	-	<i>N/A</i>	-	<i>N/A</i>	-
Other Wastage	-	<i>N/A</i>	-	<i>N/A</i>	-	<i>N/A</i>	-	<i>N/A</i>	-	<i>N/A</i>	-
Time Expiry	-	<i>N/A</i>	-	<i>N/A</i>	-	<i>N/A</i>	-	<i>N/A</i>	-	<i>N/A</i>	-
Promotion to Officer	-	<i>N/A</i>	-	<i>N/A</i>	-	<i>N/A</i>	-	<i>N/A</i>	-	<i>N/A</i>	-
Redundancy	-	<i>N/A</i>	-	<i>N/A</i>	-	<i>N/A</i>	-	<i>N/A</i>	-	<i>N/A</i>	-

* No outflow as a percentage of strength is shown for Other/No Spec or Careers
Feb-14 Edition.

10a

Trained Regular Officer Voluntary Outflow Exits by Paid Rank

	2009/2010		2010/2011		2011/2012		2012/2013		12 Months to 1st Feb 14		Actual
	Nos.	%	Nos.	%	Nos.	%	Nos.	%	Nos.	%	Jan 14
Total Officers	220	3.4%	190	2.9%	200	3.1%	240	3.7%	260	4.3%	20
Royal Navy Officers											
Total	200	3.4%	170	2.9%	180	3.2%	200	3.7%	230	4.3%	20
OF9	-	-	-	-	-	-	-	-	-	-	-
OF8	-	-	-	-	-	-	-	-	-	-	-
OF7	~	4.1%	-	-	-	-	-	-	-	-	-
OF6	10	8.2%	~	6.9%	10	10.1%	10	10.2%	10	15.4%	~
OF5	20	6.0%	10	4.7%	10	5.5%	10	5.3%	20	6.8%	~
OF4	30	2.9%	40	3.4%	30	3.4%	40	4.3%	40	4.7%	~
OF3	70	3.6%	60	3.0%	70	3.7%	70	3.9%	80	4.3%	~
OF2	70	3.1%	60	2.4%	50	2.3%	70	3.1%	80	3.7%	~
OF1	-	-	-	-	~	1.1%	-	-	-	-	-
Royal Marine Officers											
Total	20	3.3%	20	2.4%	20	3.0%	30	4.1%	40	4.8%	~
OF9	-	-	-	-	-	-	-	-	-	-	-
OF8	-	-	-	-	-	-	-	-	-	-	-
OF7	-	-	-	-	-	-	-	-	-	-	-
OF6	-	-	-	-	-	-	~	27.3%	-	-	-
OF5	-	-	~	5.5%	-	-	-	-	~	2.8%	-
OF4	~	4.2%	~	3.3%	~	4.1%	10	5.1%	10	7.2%	-
OF3	~	1.9%	~	1.2%	10	3.3%	10	3.9%	10	5.2%	-
OF2	20	4.9%	10	3.1%	10	3.3%	10	4.3%	20	4.8%	~
OF1	-	-	-	-	-	-	-	-	-	-	-

Feb-14 Edition.

	2009/2010		2010/2011		2011/2012		2012/2013		12 Months to 1st Feb 14		Actual
	Nos.	%	Nos.	%	Nos.	%	Nos.	%	Nos.	%	Jan 14
Total Ratings	1,170	4.2%	1,110	3.9%	1,240	4.4%	1,610	6.2%	1,480	6.0%	150
XR											
Total	250	4.4%	270	4.7%	260	4.9%	320	6.6%	340	7.4%	20
OR9	~	2.7%	10	3.8%	10	4.8%	10	8.8%	~	3.3%	~
OR8	~	~	~	~	~	10.6%	~	13.4%	~	17.6%	~
OR7	40	5.5%	20	3.2%	30	4.6%	40	6.4%	30	5.2%	~
OR6	20	1.9%	30	2.8%	20	1.8%	40	4.4%	40	4.5%	~
OR4	40	2.9%	40	3.4%	30	2.2%	60	4.4%	70	5.8%	~
OR2	150	6.1%	170	6.7%	180	7.7%	180	8.7%	190	10.6%	10
XSM											
Total	20	2.7%	30	3.7%	30	3.7%	30	4.0%	40	4.9%	~
OR9	~	2.1%	~	4.6%	~	5.0%	~	11.5%	~	9.2%	~
OR8	~	~	~	~	~	~	~	~	~	~	~
OR7	~	3.5%	~	2.8%	~	2.9%	~	2.9%	10	7.1%	~
OR6	~	2.5%	~	3.3%	~	3.3%	~	1.6%	~	4.2%	~
OR4	~	1.1%	~	2.1%	~	2.7%	~	2.3%	~	1.8%	~
OR2	10	3.3%	20	4.8%	20	4.4%	20	5.2%	20	5.5%	~
XAV											
Total	30	4.0%	30	3.8%	30	3.5%	20	2.6%	30	4.4%	~
OR9	~	10.3%	~	8.1%	~	2.8%	~	3.1%	~	10.1%	~
OR8	~	~	~	~	~	~	~	~	~	~	~
OR7	~	4.4%	~	5.5%	10	7.7%	~	5.7%	~	2.4%	~
OR6	10	3.4%	10	5.5%	~	3.1%	~	1.9%	10	5.3%	~
OR4	10	2.5%	~	1.5%	10	2.4%	~	1.7%	10	3.2%	~
OR3	~	~	~	~	~	~	~	~	~	~	~
OR2	10	4.8%	10	3.6%	10	3.5%	10	2.9%	10	4.9%	~
EGS											
Total	250	4.8%	220	4.2%	240	5.0%	310	7.3%	420	10.5%	40
OR9	10	4.7%	10	4.9%	10	5.6%	20	12.3%	10	4.7%	~
OR8	10	4.7%	10	4.7%	20	6.9%	30	12.8%	30	14.6%	~
OR7	70	5.8%	40	3.4%	40	3.9%	50	5.5%	60	8.3%	10
OR6	40	4.1%	30	2.8%	40	4.3%	50	7.0%	60	10.2%	~
OR4	30	2.7%	40	3.9%	20	2.7%	50	5.6%	80	9.7%	10
OR2	100	5.8%	100	5.5%	110	6.9%	120	8.0%	170	12.4%	10
ESM											
Total	70	3.1%	50	2.4%	60	2.7%	110	5.2%	120	5.8%	20
OR9	~	7.0%	~	1.4%	~	5.9%	~	4.8%	~	1.7%	~
OR8	10	5.1%	~	2.2%	~	1.6%	10	4.0%	~	1.2%	~
OR7	20	3.9%	20	2.9%	10	2.5%	30	6.0%	40	8.2%	10
OR6	10	3.0%	20	3.9%	20	4.1%	30	9.0%	30	10.9%	~
OR4	10	1.7%	~	1.6%	10	1.8%	20	5.3%	30	6.6%	10
OR2	10	2.3%	10	1.6%	20	2.4%	20	2.9%	20	3.1%	~
EAE											
Total	150	4.3%	120	3.5%	100	2.7%	110	3.3%	120	4.0%	20
OR9	~	6.0%	~	4.8%	~	7.0%	~	5.5%	~	5.4%	~
OR8	~	6.5%	~	5.2%	~	5.9%	~	2.0%	~	5.4%	~
OR7	30	4.2%	30	5.2%	20	3.2%	20	3.5%	20	3.6%	~
OR6	20	3.2%	20	2.5%	20	2.1%	20	3.0%	20	3.8%	10
OR4	20	3.6%	~	0.5%	10	1.3%	20	3.1%	10	1.5%	~
OR2	60	5.1%	60	4.6%	50	3.3%	40	3.6%	60	6.0%	~

	2009/2010		2010/2011		2011/2012		2012/2013		12 Months to 1st Feb 14		Actual
	Nos.	%	Nos.	%	Nos.	%	Nos.	%	Nos.	%	Jan 14
LOGS											
Total	110	3.5%	130	4.1%	110	3.7%	110	3.9%	110	4.3%	10
OR9	-	5.0%	-	5.2%	-	5.6%	-	6.5%	-	5.2%	-
OR8	-	-	-	-	-	-	-	-	-	-	-
OR7	10	2.7%	10	2.3%	10	5.6%	10	4.1%	10	5.5%	-
OR6	10	1.7%	10	2.1%	10	2.6%	10	2.1%	20	3.7%	-
OR4	30	2.9%	20	2.8%	20	2.4%	30	3.4%	20	2.9%	-
OR2	60	4.4%	90	5.8%	60	4.4%	60	4.5%	60	5.1%	-
Med											
Total	30	3.4%	50	4.8%	40	4.2%	50	5.0%	40	4.7%	-
OR9	-	3.8%	-	14.3%	-	11.4%	-	7.5%	-	14.9%	-
OR8	-	-	-	-	-	-	-	-	-	-	-
OR7	-	2.5%	-	1.7%	-	2.4%	-	3.3%	10	5.1%	-
OR6	10	3.1%	10	3.7%	-	1.6%	-	2.8%	-	1.7%	-
OR4	10	4.2%	10	2.7%	20	5.0%	20	5.6%	20	6.8%	-
OR3	-	-	-	-	-	11.0%	-	-	-	-	-
OR2	10	3.2%	30	8.1%	20	4.8%	20	6.4%	10	3.8%	-
RM GS											
Total	250	4.4%	220	3.7%	370	6.1%	540	9.5%	250	4.4%	30
OR9	-	2.7%	-	4.1%	-	5.3%	10	10.2%	-	2.4%	-
OR8	10	3.3%	-	0.9%	10	3.5%	10	4.0%	10	3.9%	-
OR7	10	2.1%	-	1.3%	10	2.1%	20	3.9%	10	1.6%	-
OR6	10	1.4%	10	1.8%	10	1.9%	30	5.3%	10	1.3%	-
OR4	40	3.2%	50	4.1%	90	7.4%	140	12.7%	30	2.8%	-
OR3	20	4.1%	20	3.5%	30	4.8%	20	3.0%	20	2.8%	-
OR2	160	5.9%	130	4.5%	220	7.1%	330	11.8%	180	6.5%	20
RM Band											
Total	10	2.1%	10	3.3%	10	1.8%	10	1.8%	10	1.8%	-
OR9	-	-	-	-	-	-	-	-	-	-	-
OR8	-	-	-	9.5%	-	-	-	-	-	-	-
OR7	-	-	-	3.4%	-	-	-	-	-	-	-
OR6	-	4.0%	-	2.0%	-	-	-	-	-	3.8%	-
OR4	-	1.8%	-	1.6%	-	1.7%	-	-	-	-	-
OR3	-	-	-	-	-	-	-	-	-	-	-
OR2	-	2.2%	10	4.1%	-	2.8%	10	3.3%	-	2.2%	-

* No outflow as a percentage of strength is shown for Other/No Spec or Careers
Feb-14 Edition.

11a Trained Regular Officer Promotions to Substantive Rank

	2009/2010	2010/2011	2011/2012	2012/2013	12 Months to 1st Feb 14
Total Officers	540	500	480	490	520
OF7 and Above	10	10	20	10	10
OF6	10	20	20	20	20
OF5	40	40	40	30	40
OF4	130	110	100	100	90
OF3	250	240	180	210	220
OF2	100	80	110	120	130
OF1	N/A	N/A	N/A	N/A	N/A

11b Trained Regular Rating & Other Rank Promotions to Substantive Rank

	2009/2010	2010/2011	2011/2012	2012/2013	12 Months to 1st Feb 14
Total Ratings	3,430	2,540	1,880	1,530	2,250
OR9	150	90	70	30	100
OR8	250	120	110	30	120
OR7	670	460	360	300	360
OR6	950	700	550	410	630
OR4	1,400	1,150	800	760	1,040
OR3	10	20	~	~	~

Feb-14 Edition.

		2009/2010	2010/2011	2011/2012	2012/2013	12 Months to 1st Feb 14
Royal Navy	Officers					
	Total	290	330	290	290	240
Royal Marines	Officers					
	Total	80	70	40	50	40
	Warfare	130	180	160	140	130
	Engineer	80	90	70	100	80
	Logistics	40	40	30	20	10
	Medical	20	20	20	10	10
	Medical Services	10	~	~	~	~
	Dental	~	~	~	~	~
	QARNNS	~	~	~	~	~
	Chaplain	~	~	~	~	~
	Other	~	~	~	~	~
	RM GS	80	70	40	50	40
	RM BS	~	~	~	~	~

		Feb-13	Mar-13	Apr-13	May-13	Jun-13	Jul-13	Aug-13	Sep-13	Oct-13	Nov-13	Dec-13	Jan-14
Royal Navy	Officers												
	Total	20	30	~	40	10	20	~	40	10	40	20	10
Royal Marines	Officers												
	Total	10	~	~	~	~	~	~	~	~	~	30	~
	Warfare	20	10	~	10	10	20	~	10	10	30	10	~
	Engineer	~	~	~	30	~	~	~	20	~	10	10	10
	Logistics	~	~	~	~	~	~	~	10	~	~	~	~
	Medical	~	10	~	~	~	~	~	~	~	~	~	~
	Medical Services	~	~	~	~	~	~	~	~	~	~	~	~
	Dental	~	~	~	~	~	~	~	~	~	~	~	~
	QARNNS	~	~	~	~	~	~	~	~	~	~	~	~
	Chaplain	~	~	~	~	~	~	~	~	~	~	~	~
	Other	~	~	~	~	~	~	~	~	~	~	~	~
	RM GS	10	~	~	~	~	~	~	~	~	~	30	~
	RM BS	~	~	~	~	~	~	~	~	~	~	~	~

12b

Gains to the Trained Regular Rating Strength from Untrained by Branch and Specialisation

		2009/2010	2010/2011	2011/2012	2012/2013	12 Months to 1st Feb 14
Royal Navy	Ratings Total	2,200	1,690	910	980	1,220
Royal Marines	Other Ranks Total	700	730	530	540	650
XR		590	390	240	270	300
	WS	240	150	70	120	110
	WS(AWT)	-	-	-	-	-
	WS(AWW)	-	-	-	-	-
	WS(EW)	-	-	-	-	-
	WS(UW)	-	-	-	-	-
	CIS	120	60	40	40	60
	HM	10	10	10	20	20
	HM(H)	10	-	-	-	-
	HM(M)	-	-	-	-	-
	Mine Warfare	50	30	20	40	50
	Diver	30	20	20	20	30
	Seaman Specialist	100	100	60	20	20
	Weapons Analyst	-	-	-	-	-
	PT	-	-	-	-	-
	RN Police	-	-	-	-	-
	CT	20	20	10	10	10
	Unspecified	-	-	-	-	-
XSM		100	60	40	40	50
	Coxswain (SM)	-	-	-	-	-
	WS(SSM)	40	20	20	20	30
	WS(TSM)	30	20	-	10	10
	CISSM	30	20	20	10	10
	Unspecified	-	-	-	-	-
XAV		70	80	20	20	40
	Aircrewman	-	-	-	-	-
	NA(AC)	10	20	10	10	10
	NA(AH)	60	60	20	10	30
	NA(Phot)	-	-	-	-	-
	RM Aircrewmen	-	-	-	-	-
	Unspecified	-	-	-	-	-
EGS		530	360	160	210	300
	MEM	-	-	-	-	-
	WEM	-	-	-	-	-
	ET(ME)	360	220	90	150	200
	ET(WE)	160	130	70	60	100
	ETS	-	-	-	-	-
	Unspecified	-	-	-	-	-
ESM		190	160	130	130	150
	MEM	-	-	-	-	-
	WEM	-	-	-	-	-
	ET(MESM)	100	100	60	90	90
	ET(WESM)	80	60	70	40	60
EAE		340	340	190	100	200
	AEA	-	-	-	-	-
	AEM	-	-	-	-	-
	AET	320	320	180	100	190
	NA(SE)	20	20	-	-	10
	Unspecified	-	-	-	-	-
LOGS		300	230	90	140	110
	Caterer	-	-	-	-	-
	Chef	90	50	40	40	40
	Steward	90	60	10	20	20
	Supply Chain	60	40	10	30	20
	Writer	60	80	30	50	20
	Family Service	-	-	-	-	-
	Unspecified	-	-	-	-	-
MED		70	70	50	60	70
	Dental Hyg	-	-	-	-	-
	Dental SA	10	10	-	-	-
	Med Asst	60	50	40	40	60
	NN	10	10	10	10	10
	Med Techn	-	-	-	-	-
	RM Med Asst	-	-	-	-	-
	Unspecified	-	-	-	-	-
RM GS		680	700	510	520	630
RM Band		20	30	20	20	20
	Band	20	20	20	20	20
	Bugler	-	10	-	-	10

12b Gains to the Trained Regular Rating Strength from Untrained by Branch and Specialisation (Continued)

		Feb-13	Mar-13	Apr-13	May-13	Jun-13	Jul-13	Aug-13	Sep-13	Oct-13	Nov-13	Dec-13	Jan-14
Royal Navy	Ratings												
	Total	80	70	30	170	70	140	-	150	100	190	60	160
Royal Marines	Other Ranks												
	Total	70	50	20	80	50	60	40	50	40	80	90	20
XR		20	30	-	20	50	30	-	40	20	60	-	30
	WS	-	10	-	20	10	20	-	30	-	10	-	20
	WS(AWT)	-	-	-	-	-	-	-	-	-	-	-	-
	WS(AWW)	-	-	-	-	-	-	-	-	-	-	-	-
	WS(EW)	-	-	-	-	-	-	-	-	-	-	-	-
	WS(UW)	-	-	-	-	-	-	-	-	-	-	-	-
	CIS	10	-	-	-	20	-	-	-	-	10	-	10
	HM	-	10	-	-	-	-	-	-	10	10	-	-
	HM(H)	-	-	-	-	-	-	-	-	-	-	-	-
	HM(M)	-	-	-	-	-	-	-	-	-	-	-	-
	Mine Warfare	-	10	-	-	10	-	-	-	10	10	-	-
	Diver	10	-	-	-	10	-	-	10	-	10	-	-
	Seaman Specialist	-	-	-	-	-	-	-	10	-	10	-	-
	Weapons Analyst	-	-	-	-	-	-	-	-	-	-	-	-
	PT	-	-	-	-	-	-	-	-	-	-	-	-
	RN Police	-	-	-	-	-	-	-	-	-	-	-	-
	CT	-	-	-	-	-	10	-	-	-	-	-	-
	Unspecified	-	-	-	-	-	-	-	-	-	-	-	-
XSM		10	-	-	10	-	10	-	20	-	10	-	-
	Coxswain (SM)	-	-	-	-	-	-	-	-	-	-	-	-
	WS(SSM)	10	-	-	10	-	-	-	10	-	10	-	-
	WS(TSM)	-	-	-	-	-	-	-	-	-	10	-	-
	CISSM	-	-	-	-	-	-	-	10	-	-	-	-
	Unspecified	-	-	-	-	-	-	-	-	-	-	-	-
XAV		-	10	-	-	-	20	-	-	-	20	-	-
	Aircrewman	-	-	-	-	-	-	-	-	-	-	-	-
	NA(AC)	-	10	-	-	-	-	-	-	-	-	-	-
	NA(AH)	-	-	-	-	-	20	-	-	-	10	-	-
	NA(Phot)	-	-	-	-	-	-	-	-	-	-	-	-
	RM Aircrewmen	-	-	-	-	-	-	-	-	-	-	-	-
	Unspecified	-	-	-	-	-	-	-	-	-	-	-	-
EGS		20	-	10	70	-	20	-	60	30	30	-	50
	MEM	-	-	-	-	-	-	-	-	-	-	-	-
	WEM	-	-	-	-	-	-	-	-	-	-	-	-
	ET(ME)	20	-	-	50	-	20	-	40	20	20	-	20
	ET(WE)	-	-	10	30	-	-	-	20	10	10	-	30
	ETS	-	-	-	-	-	-	-	-	-	-	-	-
	Unspecified	-	-	-	-	-	-	-	-	-	-	-	-
ESM		-	-	10	30	-	20	-	10	20	10	20	30
	MEM	-	-	-	-	-	-	-	-	-	-	-	-
	WEM	-	-	-	-	-	-	-	-	-	-	-	-
	ET(MESM)	-	-	-	20	-	20	-	-	20	-	10	10
	ET(WESM)	-	-	10	10	-	-	-	-	-	10	10	10
EAE		20	20	10	20	20	-	-	20	-	40	40	10
	AEA	-	-	-	-	-	-	-	-	-	-	-	-
	AEM	-	-	-	-	-	-	-	-	-	-	-	-
	AET	20	20	10	20	20	-	-	20	-	40	30	10
	NA(SE)	-	-	-	-	-	-	-	-	-	-	10	-
	Unspecified	-	-	-	-	-	-	-	-	-	-	-	-
LOGS		-	-	-	20	10	20	-	-	20	20	-	20
	Caterer	-	-	-	-	-	-	-	-	-	-	-	-
	Chef	-	-	-	20	-	10	-	-	10	10	-	10
	Steward	-	-	-	-	-	-	-	-	-	-	-	10
	Supply Chain	-	-	-	-	-	10	-	-	-	10	-	-
	Writer	-	-	-	-	10	-	-	-	10	-	-	-
	Family Service	-	-	-	-	-	-	-	-	-	-	-	-
	Unspecified	-	-	-	-	-	-	-	-	-	-	-	-
MED		10	10	-	10	-	10	-	10	10	-	10	10
	Dental Hyg	-	-	-	-	-	-	-	-	-	-	-	-
	Dental SA	-	-	-	-	-	-	-	-	-	-	-	-
	Med Asst	10	-	-	10	-	10	-	10	10	-	10	10
	Naval Nurse	-	-	-	-	-	-	-	-	-	-	-	-
	Med Techn	-	-	-	-	-	-	-	-	-	-	-	-
	RM Med Asst	-	-	-	-	-	-	-	-	-	-	-	-
	Unspecified	-	-	-	-	-	-	-	-	-	-	-	-
RM GS		70	50	20	80	50	60	40	30	40	70	90	20
RM Band		-	-	-	-	-	-	-	10	-	-	-	10
	Band	-	-	-	-	-	-	-	10	-	-	-	-
	Bugler	-	-	-	-	-	-	-	-	-	-	-	10

13 Trained Intake from Civil Life or Another Service

	2009/2010	2010/2011	2011/2012	2012/2013	12 Months to 1st Feb 14	Actual Jan 14
Total Officers	10	10	~	10	10	~
Warfare	~	~	~	~	~	-
Engineer	-	-	-	-	~	~
Logistics	~	-	-	-	-	-
Medical	-	~	-	-	~	-
Medical Services	-	-	~	-	-	-
QARNNS	~	-	-	-	-	-
Dental	~	~	-	-	-	-
Chaplain	-	-	-	-	~	-
RM GS	~	~	~	~	~	-
RM Band	-	-	-	-	-	-
No Value	-	-	-	-	-	-
Total Ratings	120	80	40	60	80	~
XR	30	20	20	20	10	~
XSM	~	~	~	-	-	-
XAV	~	~	~	~	-	-
EGS	10	10	~	-	10	~
ESM	10	~	~	-	~	-
EAE	10	~	-	~	10	-
LOGS	10	10	~	~	~	-
MED	~	~	~	~	~	-
QARNNS	-	-	-	-	-	-
RM GS	40	30	10	20	40	~
RM Band	-	~	-	~	-	-
No Value	-	-	-	-	-	-

The figures above show trained intake to the regular strength from civilian life or from another service.

Feb-14 Edition.

Glossary

Term	Definition
RNR	Royal Navy Reserves
RMR	Royal Marine Reserves
FTRS	Full Time Reserve Service
FTRS Regular	FTRS Personnel counted against the Regular Liability
FTRS Non Regular	FTRS Personnel not counted against the Regular Liability
Transfer Trainees	Trained Personnel undergoing further training in an alternative discipline
GS	General Service - Surface Fleet
SM	Submarine - Submarines
FAA	Fleet Air Arm - Aviation
XR	Warfare General Service
XSM	Warfare Submarine
XAV	Warfare Aviation and RM Aircrew
EGS	General Service Engineers
ESM	Submarine Engineers
EAE	Aviation Engineers
QARNNS	Queen Alexandra's Royal Naval Nursing Service

Specialisation	Definition
AEA	Air Engineer Artificer
AEM	Air Engineer Mechanic
AET	Air Engineering Technician
CIS	Communications Information Systems
CISSM	Communications Information Systems Submarine
CMA	Chartered Management Accountant
CT	Communications Technician
Dental Hyg	Dental Hygienist
Dental SA	Dental Surgery Assistant
E(IS SM)	Engineer - Information Systems Submarine
E(IS)	Engineer - Information Systems
E(TM SM)	Engineering Training Manager Submarine
E(TM)	Engineering Training Manager
ET(ME)	Engineering Technician Marine Engineer
ET(MESM)	Engineering Technician Marine Engineer Submarine
ET(WE)	Engineering Technician Weapon Engineer
ET(WESM)	Engineering Technician Weapon Engineer Submarine
ETS	Education Training & Support
HM	Hydrographical Meteorological
HM(H)	HM(Hydrographic) (formally Survey Recorders)
HM(M)	HM(Meteorological) (formally NA(Meteorological))
Med Asst	Medical Assistant
Med Tech	Medical Technician
MEM	Marine Engineering Mechanic
NA(AC)	Naval Airman Aircraft Controller
NA(AH)	Naval Airman Aircraft Handler
NA(PHOT)	Naval Airman Photographer
NA(SE)	Naval Airman Survival Equipment
PT	Physical Training Instructor
PWO	Principal Warfare Officer
PWO(A)	Principal Warfare Officer (Air)
PWO(C)	Principal Warfare Officer (Communications)
PWO(N)	Principal Warfare Officer (Navigation)
PWO(U)	Principal Warfare Officer (Underwater)
WEM	Weapon Engineering Mechanic
WS	Warfare Specialist
WS(AWT)	Warfare Specialist - Above Water Tactical
WS(AWW)	Warfare Specialist - Above Water Warfare
WS(EW)	Warfare Specialist - Electronic Warfare
WS(SSM)	Warfare Specialist Sensors Submarine
WS(TSM)	Warfare Specialist Tactical Submarine
WS(UW)	Warfare Specialist - Underwater Warfare