



Department  
for Business  
Innovation & Skills



# **Monthly Statistics of Building Materials and Components**

March 2013

No. 457

## NOTES

In tables where figures have been rounded to the nearest final digit, there may be an apparent slight discrepancy between the sum of the constituent items and the total as shown.

Symbols. The following symbols have been used throughout.

- |                       |                   |
|-----------------------|-------------------|
| .. = not available    | (P) = provisional |
| - = nil or negligible | (R) = revised     |

All figures are subject to revisions.

Unless otherwise stated, revisions are due to more complete information from late returns. If any figures are revised by 5% or more from the previously published value, an explanation will be provided.

The United Kingdom Statistics Authority has designated these statistics as National Statistics, in accordance with the Statistics and Registration Service Act 2007 and signifying compliance with the Code of Practice for Official Statistics.

Designation can be broadly interpreted to mean that the statistics:

- meet identified user needs;
- are well explained and readily accessible;
- are produced according to sound methods, and
- are managed impartially and objectively in the public interest.

Unless otherwise stated, the statistics published in this volume have been collected by the Office for National Statistics on behalf of the Department for Business, Innovation & Skills.

Lead Statistician: James Liley

For enquiries or further information about the contents of this publication please contact:

Construction Market Intelligence, 1 Victoria Street,  
London, SW1H 0ET;  
Telephone : 020 - 7215 - 6221  
E-mail : [materialstats@bis.gsi.gov.uk](mailto:materialstats@bis.gsi.gov.uk).

URN 13/313d

3 April 2013

## CONTENTS

	<u>Page</u>
Table 1 : Construction Material Price Indices	1
Table 2 : Price Indices of Construction Materials – monthly	2 & 3
Table 3 : Price Indices of Construction Materials – annual averages	4
Table 4 : Sales of Sand and Gravel in Great Britain	5
Table 5 : Sales of Sand and Gravel by English Regions, Wales and Scotland	6 & 7
Table 6 : Sales of Sand and Gravel by English and Welsh Counties and Scottish Regions	8 & 9
Table 7 : Slate : Production, Deliveries and Stocks	10
Chart 1 : Deliveries of Sand & Gravel and Ready-Mixed Concrete	11
Table 8 : Cement and Clinker : Production, Deliveries and Stocks	12
Chart 2 : Deliveries of Bricks, Concrete Building Blocks and Cement	13
Table 9 : Bricks : Production, Deliveries and Stocks for Great Britain	14 & 15
Table 10 : Bricks : Production, Deliveries and Stocks by English Regions, Wales and Scotland	16 to 19
Table 11 : Concrete Building Blocks : Production, Deliveries and Stocks for Great Britain	20 & 21
Table 12 : Concrete Building Blocks : Production, Deliveries and Stocks by English Regions, Wales and Scotland	22 & 23
Table 13 : Concrete Roofing Tiles and Ready-Mixed Concrete	24
Chart 3 : Comparison of Imports and Exports	25
Table 14 : Value of Overseas Trade in Selected Materials and Components for Constructional Use : Imports (cif) and Exports (fob)	26 to 35



Table 1: Construction Material Price Indices

United Kingdom	2005 = 100					
	2008	2009	2010	2011	2012	2013
<b>(a) New Housing</b>						
January	115.3	119.7	122.3	130.1	134.9	136.8 (P)
February	116.8	120.6	122.9	131.2	135.5	137.7 (P)
March	117.5	120.6	123.4	132.0	137.0	
April	118.2	120.2	125.2	132.6	137.3	
May	119.0	119.8	127.2	133.4	137.4	
June	118.7	119.5	128.3	134.6	136.6	
July	120.0	119.1	129.0	135.0	136.6	
August	120.5	120.2	129.5	135.7	136.5	
September	120.4	121.0	129.9	135.6	136.3	
October	121.1	121.7	129.8	135.8	136.5	
November	120.4	122.6	130.2	135.6	136.6	
December	119.7	122.3	129.9	135.2	136.1 (P)	
Annual Average	119.0	120.6	127.3	133.9	136.4 (P)	
<b>(b) Other New Work</b>						
January	114.3	122.9	124.6	135.1	144.5	145.0 (P)
February	116.2	122.1	125.0	137.1	145.1	146.3 (P)
March	117.3	121.6	125.9	139.1	145.1	
April	119.2	120.7	129.4	141.3	145.3	
May	121.6	120.7	132.0	142.5	144.7	
June	123.7	120.7	133.8	143.5	144.5	
July	126.4	120.7	133.1	143.4	143.5	
August	127.7	120.9	132.8	143.6	143.7	
September	128.6	121.8	132.9	143.5	144.4	
October	129.3	123.5	132.5	143.3	144.5	
November	126.6	125.3	132.3	143.0	143.8	
December	124.7	125.0	132.3	143.3	143.7 (P)	
Annual Average	123.0	122.2	130.6	141.6	144.4 (P)	
<b>(c) Repair and Maintenance</b>						
January	116.0	122.1	125.2	134.3	140.3	141.9 (P)
February	117.2	122.0	126.1	135.7	141.2	143.2 (P)
March	117.9	121.6	126.4	136.7	142.6	
April	119.2	121.2	128.4	137.6	143.1	
May	120.4	121.0	131.0	138.5	143.0	
June	121.2	120.7	132.2	139.6	142.3	
July	122.9	120.6	132.9	140.4	141.9	
August	123.7	121.7	133.4	141.2	141.8	
September	123.8	122.8	133.7	140.9	141.9	
October	124.7	123.9	133.7	141.1	142.0	
November	123.5	125.2	134.2	140.9	142.0	
December	122.4	125.0	133.8	140.7	141.3 (P)	
Annual Average	121.1	122.3	130.9	139.0	142.0 (P)	
<b>(d) All Work</b>						
January	115.3	122.5	124.6	134.2	141.8	143.0 (P)
February	116.9	122.0	125.2	135.9	142.2	144.4 (P)
March	117.9	121.6	125.9	137.4	143.5	
April	119.2	121.0	128.5	139.2	143.8	
May	121.0	120.9	131.0	140.2	143.3	
June	122.3	120.7	132.6	141.3	142.8	
July	124.4	120.6	132.4	141.5	142.0	
August	125.7	121.1	132.5	141.9	142.4	
September	126.2	122.1	132.5	141.7	142.7	
October	126.9	123.4	132.2	141.6	142.8	
November	125.0	124.9	132.4	141.3	142.3	
December	123.5	124.7	132.0	141.5	142.1 (P)	
Annual Average	122.0	122.1	130.2	139.8	142.6 (P)	

Note: These indices are weighted averages of Producer Price Indices. They do not include electrical or mechanical engineering materials.

Source ONS/BIS

# PRICES

**Table 2: Price Indices of Construction Materials**

United Kingdom

	2012							
	Feb	Mar	Apr	May	Jun	Jul	Aug	
<b>AGGREGATES</b>								
Crushed rock	- including levy	123.2	124.3	123.9	121.7	122.1	120.4	118.2
	- excluding levy	122.8	124.3	123.8	121.2	121.3	119.3	116.6
Sand & gravel	- including levy	128.2	129.1	128.8	126.7	131.2	132.1	132.3
	- excluding levy	129.5	131.2	129.8	127.3	132.4	133.2	133.6
Coated roadstone	- excluding levy	152.3	153.7	153.4	153.4	152.9	151.1	150.4
<b>CEMENT AND CONCRETE</b>								
Cement **		141.3	142.2	144.6	145.2	145.1	144.7	144.8
Ready-mixed concrete **		118.4	118.8	118.9	118.8	118.2	116.8	118.1
Pre-cast concrete products **		122.2	122.5	122.5	122.9	123.2	123.1	123.6
of which : Blocks, bricks, tiles & flagstones **		127.5	127.7	128.3	128.7	129.2	128.8	128.9
Concrete reinforcing bars		172.3	170.6	168.9	166.4	163.1	160.4	157.9
<b>CLAY PRODUCTS</b>								
All Bricks **		123.7	123.6	125.0	122.6	125.0	125.6	124.7
Ceramic tiles *		89.5	89.5	89.7	90.3	94.0	94.0	94.0
Ceramic sanitaryware *		156.2	156.2	160.6	160.7	160.1	159.3	160.3
<b>TIMBER AND JOINERY</b>								
Imported sawn or planed wood		150.0	151.1	152.6	152.6	152.2	152.0	151.9
Imported plywood		116.6	119.2	122.3	122.2	121.8	124.5	121.1
Sawn wood **		141.0	141.6	143.1	142.8	143.2	144.6	144.2
Particle Board **		138.4	138.5	139.3	140.0	140.9	141.1	141.5
Builders woodwork **		133.5	130.6	131.3	131.3	131.6	131.8	131.8
of which : Doors & windows **		134.4	135.3	136.2	136.1	136.1	136.0	136.2
<b>METAL PRODUCTS</b>								
Fabricated structural steel		128.5	130.1	131.3	132.1	131.0	129.3	129.0
Doors & windows **		101.7	101.5	101.5	101.4	101.2	101.2	101.2
Central heating boilers **		120.0	120.0	118.6	118.6	118.6	118.6	118.6
Taps and Valves for sanitaryware		174.4	174.4	174.4	174.0	..	..	..
<b>PLASTIC PRODUCTS</b>								
Pipes and fittings (rigid) **		128.6	131.0	130.9	130.7	131.0	132.4	133.4
Pipes and fittings (flexible) **		136.3	136.3	136.8	136.7	136.8	136.5	136.7
Sanitaryware *		117.0	117.6	117.6	118.6	118.6	118.6	118.6
Doors & windows **		112.3	112.5	112.5	112.5	112.6	112.6	112.6
<b>OTHER BUILDING MATERIALS</b>								
Asphalt products *		..	..	..	..	..	..	..
Insulating materials (thermal or acoustic) **		117.7	117.9	117.1	116.7	116.5	118.5	118.0
Paint (aqueous) **		133.8	133.9	134.6	133.8	133.7	134.1	134.1
Paint (non-aqueous) **		130.3	130.0	130.0	131.0	131.0	131.0	131.0
Lighting equipment for buildings *		..	..	..	..	..	..	..
Lighting equipment for roads **		112.9	112.5	114.5	114.5	114.5	114.5	114.5
Electric water heaters *		145.2	145.2	145.0	146.4	146.3	148.6	148.7
Kitchen furniture **		116.8	116.9	117.1	117.1	117.2	117.1	117.0

Notes : 1. Most of these indices, which are compiled by the Office for National Statistics, are a selection of producer price indices.

The complete list is available online at [www.statistics.gov.uk](http://www.statistics.gov.uk), by searching for the reference MM22.

\*The Office for National Statistics state that these Indices are based on relatively few quotes and in the long term should not be relied upon for contractual purposes.

\*\* These index values are considered less reliable mainly due to lack of market coverage.

2005=100

Sep	Oct	Nov	Dec	2013			
				Jan (P)	Feb (P)		
							<b>AGGREGATES</b>
120.5	118.9	118.7	119.5	119.1	119.1		Crushed rock - including levy
119.2	118.5	118.2	119.1	118.8	118.8		- excluding levy
132.5	132.6	134.0	136.6	136.4	136.6		Sand & gravel - including levy
133.1	134.0	135.7	138.5	138.2	138.4		- excluding levy
151.3	151.9	152.4	150.7	154.9	154.8		Coated roadstone - excluding levy
							<b>CEMENT AND CONCRETE</b>
145.0	144.8	144.1	144.1	146.2	146.3		Cement **
117.9	118.0	117.4	117.6	119.1	119.8		Ready-mixed concrete **
122.9	122.8	122.5	122.6	122.8	123.6		Pre-cast concrete products **
127.8	127.7	127.4	128.0	127.8	128.9		of which : Blocks, bricks, tiles & flagstones **
159.0	158.8	156.9	158.5	156.4	157.6		Concrete reinforcing bars
							<b>CLAY PRODUCTS</b>
125.5	125.6	125.4	125.1	126.8	126.9		All Bricks **
94.0	..	..	..	..	..		Ceramic tiles *
159.6	..	..	..	..	..		Ceramic sanitaryware *
							<b>TIMBER AND JOINERY</b>
151.2	150.6	148.3	148.0	148.6	149.0		Imported sawn or planed wood
121.8	121.9	122.1	119.8	120.0	121.0		Imported plywood
145.1	144.4	142.4	142.7	142.5	143.1		Sawn wood **
141.8	142.6	145.4	145.6	147.0	146.5		Particle Board **
132.0	131.7	131.5	131.6	131.7	131.6		Builders woodwork **
136.9	136.4	135.4	135.8	135.5	135.5		of which : Doors & windows **
							<b>METAL PRODUCTS</b>
128.1	126.2	124.1	124.8	126.9	126.0		Fabricated structural steel
101.1	101.2	100.9	100.7	100.8	101.1		Doors & windows **
118.6	118.6	118.6	118.6	118.6	118.6		Central heating boilers **
..	..	..	..	..	..		Taps and Valves for sanitaryware
							<b>PLASTIC PRODUCTS</b>
133.9	134.2	135.0	134.2	133.8	133.2		Pipes and fittings (rigid) **
137.0	138.8	138.4	138.1	138.4	139.2		Pipes and fittings (flexible) **
118.6	118.6	118.6	118.6	118.6	120.8		Sanitaryware *
113.1	112.9	112.6	115.0 (R)	114.9	114.9		Doors & windows **
							<b>OTHER BUILDING MATERIALS</b>
..	..	..	..	..	..		Asphalt products *
118.2	118.4	118.5	118.0	118.8	119.9		Insulating materials (thermal or acoustic) **
134.0	133.9	132.7	132.6	134.1	138.5		Paint (aqueous) **
130.5	130.8	130.9	131.2	132.7	134.6		Paint (non-aqueous) **
..	..	..	..	..	..		Lighting equipment for buildings *
114.5	114.4	114.4	114.4	114.4	114.4		Lighting equipment for roads **
148.5	148.4	147.9	147.8 (R)	147.8	147.8		Electric water heaters *
117.0	117.0	116.7	116.1	116.1	116.2		Kitchen furniture **

Source : ONS

Note: Due to the change from SIC03 to SIC07 the composition of the Aggregate and Coated Roadstone (excluding levy) indices was altered. Previous indices are available from earlier editions of these tables.

# PRICES

## Table 3: Price Indices of Construction Materials - Annual Averages

United Kingdom		2005=100					
		2007	2008	2009	2010	2011	2012
<b>AGGREGATES</b>							
Crushed rock	- including levy	..	..	110.0	115.5	121.0	121.2
	- excluding levy	..	..	103.1	110.8	121.0	120.6
Sand & gravel	- including levy	..	..	116.2	121.1	121.8	131.0
	- excluding levy	..	..	115.8	121.1	121.5	132.4
Coated roadstone	- including levy	113.8	130.0	140.8	..	..	..
	- excluding levy	113.7	129.7	140.4	..	..	152.2
Previous Index Crushed rock	- including levy	95.2	103.4	112.3	..	..	..
	- excluding levy	93.6	100.6	108.4	..	..	..
Previous Index Sand & Gravel	- including levy	109.9	117.5	112.0	..	..	..
	- excluding levy	110.9	116.3	107.5	..	..	..
<b>CEMENT AND CONCRETE</b>							
Cement		114.7	128.4	138.5	133.2	135.3	143.9
Ready-mixed concrete		106.7	113.4	110.8	110.5	113.8	118.0
Plasterboard etc		101.8	104.7	..	..	..	..
Pre-cast concrete products		110.6	114.4	118.7	117.4	120.9	122.7
	of which: Blocks, bricks, tiles & flagstones	112.8	115.4	121.1	121.0	125.2	128.0
Concrete re-inforcing bars		129.8	158.3	125.9	144.6	168.6	163.7
Fibre Cement Products		116.8	124.2	..	..	..	..
<b>CLAY PRODUCTS</b>							
All Bricks		111.1	109.0	117.2	118.8	119.3	124.2
Ceramic tiles		84.8	81.0	82.6	90.1	91.0	..
Ceramic sanitaryware		112.6	119.9	130.7	134.4	145.9	..
<b>TIMBER AND JOINERY</b>							
Imported sawn or planed wood		..	..	127.9	152.5	154.0	150.9
Imported plywood		..	..	110.2	119.0	116.9	120.9
Previous Index Imported Softwood		133.6	123.6	127.5	..	..	..
Previous Index Imported Plywood		106.5	120.7	124.1	..	..	..
Sawn Wood		122.0	127.8	118.7	135.1	141.7	143.0
Particle Board		112.7	113.8	111.4	117.3	133.0	141.0
Builders woodwork		108.0	113.6	119.7	125.5	129.8	131.8
	of which						
	Doors & windows	108.7	116.7	127.1	130.9	136.6	136.4
<b>METAL PRODUCTS</b>							
Fabricated structural steel		118.1	137.2	106.0	117.9	132.3	128.5
Doors & windows		87.5	87.0	89.8	91.2	95.2	101.4
Screws etc		105.9	106.6	..	..	..	..
Other builders' ironmongery		105.3	108.5	..	..	..	123.6
Central heating boilers		105.0	106.3	109.8	113.4	117.6	118.8
Central heating pumps		114.5	120.2	..	..	..	..
Taps & valves (domestic)		..	136.6	152.1	158.2	168.9	..
Metal sanitaryware		108.3	106.3	..	..	..	124.6
Copper pipes		163.2	154.1	..	..	..	..
<b>PLASTIC PRODUCTS</b>							
Pipes and fittings (rigid)		112.2	118.1	121.4	121.5	127.3	132.0
Pipes and fittings (flexible)		110.6	115.3	129.9	130.3	134.1	137.1
Sanitaryware		102.6	112.0	113.7	114.7	116.1	118.1
Doors & windows		103.5	106.2	107.9	108.1	110.8	112.8
Floor covering		109.8	..	..	..	..	..
<b>OTHER BUILDING MATERIALS</b>							
Asphalt products		132.2	140.4	151.4	162.1	..	..
Insulating materials (thermal or acoustic)		106.0	105.6	104.0	103.2	109.6	117.6
Paint (aqueous)		104.6	112.7	118.3	..	..	133.6
Paint (non-aqueous)		102.6	110.0	113.0	114.0	121.9	130.5
Lighting equipment for buildings		..	102.3	107.4	107.5	..	..
Lighting equipment for roads		100.9	105.2	112.3	110.6	110.7	114.1
Electric heating apparatus		105.4	112.0	..	..	..	..
Electric water heaters		119.8	122.3	132.6	136.7	142.5	146.9
Kitchen furniture		99.7	103.6	106.6	109.1	112.3	116.9

Source : ONS

Note 1: Due to the change from SIC03 to SIC07 the composition of the Aggregate and Wood Indices has been altered. As such we will publish the Previous Indices alongside the Current Indices.

Note 2: These indices, which are compiled by the Office for National Statistics, are a selection of producer price indices. The complete list is published monthly by the ONS in the Business Monitor MM22.



## MINING AND QUARRYING

**Table 4 : Sales of Sand and Gravel in Great Britain**

Great Britain		Thousand tonnes					
	Sand		Gravel	Sand & Gravel	Sand, Gravel & Hoggin	Sand & Gravel	of which
	for Building	for Concreting	for Concreting & other uses	for Coating	for Fill	Total	Marine-Dredged
2002	11,152	30,334	35,642	2,106	6,279	85,513	12,833
2003	11,474	31,349	31,725	1,493	6,498	82,539	12,249
2004	11,017	32,366	30,184	1,380	6,399	81,346	12,996
2005	12,419	30,704	30,648	1,569	5,173	80,513	13,025
2006	9,499	29,893	31,963	2,346	4,195	77,896	13,974
2007	8,649	29,803	31,114	1,695	4,254	75,515	13,777
2008	8,864	28,922	28,297	..	..	74,651	12,582
2009	7,270	21,582	..	..	..	58,482	9,589
2010	6,074	19,887	..	..	..	54,530	9,341
2011	6,041	23,489	..	..	..	57,062	11,169
2012	6,499	21,994	23,077	..	..	57,972	10,320
2006 Q4	2,125	6,942	7,271	560	958	17,856	3,018
2007 Q1	2,081	6,919	7,242	443	904	17,589	3,177
Q2	2,305	7,762	8,202	432	1,179	19,880	3,596
Q3	2,304	7,829	8,191	398	1,162	19,884	3,675
Q4	1,959	7,293	7,479	422	1,009	18,162	3,329
2008 Q1	2,151	7,156	7,286	379	1,180	18,152	3,035
Q2	2,385	7,724	7,668	456	2,041	20,274	3,541
Q3	2,279	7,644	7,091	..	..	19,341	3,337
Q4	2,049	6,398	6,252	490	1,695	16,884	2,669
2009 Q1	1,727	5,313	5,330	695	1,566	14,631	2,389
Q2	1,916	5,637	5,756	..	..	15,359	2,637
Q3	1,992	5,598	..	..	..	14,878	2,457
Q4	1,635	5,034	..	..	1,432	13,614	2,106
2010 Q1	1,539	4,952	..	..	..	13,711	2,131
Q2	1,585	4,983	..	..	..	13,940	2,444
Q3	1,584	5,268	..	..	..	14,112	2,592
Q4	1,366	4,684	..	..	..	12,767	2,174
2011 Q1	1,572	5,665	..	..	..	14,150	2,746
Q2	1,579	6,127	5,291	..	..	14,831	2,923
Q3	1,533	6,085	5,160	..	..	14,684	2,937
Q4	1,357	5,612	4,719	..	..	13,397	2,563
2012 Q1	1,481	5,635	5,039	..	..	13,894	2,675
Q2	1,712	5,608	5,633	..	..	14,474	2,609
Q3	1,778	5,612	6,259	..	..	15,192	2,749
Q4	1,528	5,139	6,146	..	..	14,412	2,287

Note : The figures above are from a quarterly sample inquiry whereas those below are from the Annual Minerals Raised Inquiry, a census.

The two inquiries differ because some respondents are only able to provide estimated information for the quarterly inquiry.

1999	11,356	31,730	31,614	2,585	10,924	88,209	13,424
2000	11,758	31,167	31,797	2,461	12,051	89,234	14,356
2001	11,515	31,656	35,135	2,257	7,647	88,210	13,611
2002	11,190	31,224	32,434	2,031	5,842	82,721	12,832
2003	11,851	31,411	30,236	1,766	4,957	80,221	12,131
2004	10,688	32,529	32,346	2,437	8,058	86,057	12,996
2005	11,558	29,848	32,163	2,172	6,651	82,392	13,024
2006	9,907	29,815	31,002	2,648	6,869	80,242	13,974
2007	9,877	30,202	29,350	2,636	6,436	78,501	13,777
2008	8,527	26,885	23,388	2,222	11,106	72,127	12,621
2009	6,296	21,570	19,553	2,270	6,021	55,709	9,592
2010	6,110	20,947	18,540	2,112	6,621	54,330	9,341
2011	6,140	22,591	18,712	1,913	5,659	55,015	11,189

# MINING AND QUARRYING

**Table 5 : Sales of Sand and Gravel by Standard region, Wales and Scotland**

	<b>Sand</b>		<b>Gravel</b>	<b>Sand &amp; Gravel</b>	<b>Sand, Gravel &amp; Hoggin</b>	<b>Sand &amp; Gravel</b>	of which
	for Building	for Concreting	for Concreting & other uses	for Coating	for Fill	Total	<b>Marine-Dredged</b>
<b>(a) Q4 2012</b>							
North East	24	..	1,118	..	36	..	..
Yorkshire & the Humber	95	301	277	..	42	..	..
North West	171	210	..	..	44	464	27
West Midlands	188	677	620	..	..	1,596	0
East Midlands	115	589	464	..	..	1,303	0
East of England	220	875	887	..	140	..	..
South East	280	1,017	1,431	38	301	3,067	1,775
South West	154	588	..	..	218	1,188	110
Wales	103	..	70	..	..	385	144
Scotland	178	509	1,058	99	228	2,072	0
Great Britain	1,528	5,139	6,146	..	..	14,412	2,287
of which marine-dredged	140	996	1,083	..	..	2,287	
<b>(b) Q4 2011</b>							
North East	30	..	147	..	57	..	81
Yorkshire & the Humber	108	315	293	..	94	..	..
North West	191	208	..	31	..	478	21
West Midlands	118	563	558	..	..	1,332	0
East Midlands	97	633	444	..	..	1,308	0
East of England	198	1,024	862	..	179	..	113
South East	246	1,454	1,501	40	255	3,496	2,056
South West	114	632	..	..	307	1,288	111
Wales	95	..	107	..	23	406	141
Scotland	160	484	589	115	208	1,556	0
Great Britain	1,357	5,612	4,719	..	..	13,397	2,563
of which marine-dredged	111	1,263	1,093	..	..	2,563	

Note : Regions refer to Government Office Regions

# MINING AND QUARRYING

Thousand tonnes

	<b>Sand</b>		<b>Gravel</b>	<b>Sand &amp; Gravel</b>	<b>Sand, Gravel &amp; Hoggin</b>	<b>Sand &amp; Gravel</b>	of which
	for Building	for Concreting	for Concreting & other uses	for Coating	for Fill	Total	<b>Marine-Dredged</b>
<b>(c) Annual 2012</b>							
North East	112	..	3,657	..	..	..	..
Yorkshire & the Humber	492	1,267	1,163	..	213	..	..
North West	705	877	..	..	..	..	..
West Midlands	741	2,629	2,451	..	..	6,233	0
East Midlands	475	2,528	..	..	..	5,344	0
East of England	945	3,898	3,773	..	579	..	..
South East	1,206	4,746	..	166	..	13,575	8,208
South West	682	2,618	..	..	..	5,088	534
Wales	397	..	..	..	..	1,446	614
Scotland	744	2,089	2,607	519	1,022	6,981	0
Great Britain	6,499	21,994	23,077	..	..	57,972	10,320
of which marine-dredged	591	4,608	4,892	..	..	10,320	
<b>(d) Annual 2011</b>							
North East	100	..	..	..	270	..	..
Yorkshire & the Humber	519	1,374	1,277	..	393	..	..
North West	754	..	..	123	..	1,940	96
West Midlands	505	2,458	2,358	..	..	5,695	0
East Midlands	443	2,594	1,962	..	..	5,673	0
East of England	950	4,184	3,586	..	786	..	..
South East	1,050	5,839	6,509	182	..	14,585	8,836
South West	555	2,779	..	..	..	5,795	502
Wales	428	..	..	..	..	1,671	740
Scotland	737	2,103	2,467	451	859	6,617	0
Great Britain	6,041	23,489	..	..	..	57,062	11,169
of which marine-dredged	514	5,418	..	..	..	11,169	

Note : Regions refer to Government Office Regions

# MINING AND QUARRYING

## Table 6 : Sales of Sand and Gravel by English & Welsh County and Scottish Region

Thousand tonnes

	2010		2011			
	Quarter 3	Quarter 4	Quarter 1	Quarter 2	Quarter 3	Quarter 4
<b>NORTH EAST</b>	..	..	..	..	..	..
Northumberland	189	201	550	1,014	1,231	1,231
Tyne and Wear *	..	..	..	17	21	18
Durham	..	..	..	..	53	52
Cleveland *	..	..	..	..	..	..
<b>YORKSHIRE &amp; THE HUMBER</b>	..	..	..	..	..	..
North Yorkshire	533	457	448	423	437	389
West Yorkshire	..	..	..	..	..	..
South Yorkshire	171	137	174	178	178	..
Humberside *	..	..	..	164	172	154
<b>NORTH WEST</b>	485	478	..	480	466	464
Cumbria	122	121	147	141	137	137
Lancashire	46	45	33	30	29	29
Merseyside *	24	21	..	20	24	27
Greater Manchester	71	70	40	39	38	38
Cheshire	222	221	247	250	238	233
<b>WEST MIDLANDS</b>	1,455	1,333	1,441	1,564	1,632	1,596
Shropshire	150	137	175	188	196	193
Staffordshire	913	833	906	975	1,016	998
West Midlands	..	..	..	124	132	123
Warwickshire	170	158	..	107	108	108
Hereford & Worcester	..	..	156	170	180	174
<b>EAST MIDLANDS</b>	1,484	1,308	1,301	1,366	1,374	1,303
Derbyshire	221	199	240	249	251	241
Nottinghamshire	394	346	328	348	345	328
Leicestershire	251	214	238	..	..	..
Northamptonshire	75	67	47	..	..	..
Lincolnshire	543	482	448	470	500	467
<b>EAST OF ENGLAND</b>	..	..	..	..	..	..
Cambridgeshire	553	520	382	393	397	353
Norfolk	346	323	318	335	341	294
Suffolk *	..	..	..	..	357	284
Essex *	..	..	..	..	..	..
Bedfordshire	..	..	271	291	292	254
Hertfordshire	..	..	..	..	..	..
<b>SOUTH EAST</b>	3,753	3,496	3,549	3,399	3,560	3,067
Buckinghamshire	113	112	94	..	..	77
Oxfordshire	83	..	93	88	101	98
Berkshire	219	218	209	193	205	186
Greater London *	1,081	1,004	1,105	970	1,038	910
Surrey	255	252	234	228	239	216
Kent *	981	916	940	956	964	744
Sussex East *	..	..	..	..	..	..
Sussex West *	213	..	..	194	202	183
Hampshire *	626	609	574	564	613	559
Isle of Wight	..	..	..	..	..	..

Note : Regions refer to Government Office Regions

\* Includes marine-dredged.

# MINING AND QUARRYING

Thousand tonnes

	2010		2011			
	Quarter 3	Quarter 4	Quarter 1	Quarter 2	Quarter 3	Quarter 4
<b>SOUTH WEST</b>	1,509	1,288	1,274	1,268	1,358	1,188
Gloucestershire	176	..	185	180	186	165
Wiltshire	165	142	170	166	173	160
Avon *	..	..	..	..	..	..
Somerset *	..	..	..	..	..	..
Dorset *	..	..	..	..	..	..
Devon *	..	..	..	171	178	160
Cornwall	436	367	..	..	..	..
<b>ENGLAND</b>	12,556	11,436	11,949	12,530	13,111	11,955
<b>WALES</b>	460	406	360	347	354	385
Clwyd	152	162	145	120	116	149
Gwynedd *	42	..	33	..	35	36
Powys	0	0	1	1	1	2
Dyfed *	..	..	..	..	..	..
Glamorgan West *	..	..	..	25	23	21
Glamorgan Mid	3	3	0	0	0	0
Glamorgan South *	..	..	..	..	..	..
Gwent *	..	..	..	..	..	..
<b>SCOTLAND</b>	1,668	1,556	1,585	1,597	1,727	2,072
South of Scotland	96	88	96	100	109	161
North East Scotland	302	278	192	197	208	298
Highlands	159	146	140	145	151	209
Island Areas	16	15	10	10	13	11
East Central Scotland	101	93	293	290	307	258
West Central Scotland	595	561	508	500	552	546
Tayside and Fife	399	375	346	355	387	589
<b>GREAT BRITAIN</b>	14,684	13,398	13,894	14,474	15,192	14,412

Note : Regions refer to Government Office Regions

\* Includes marine-dredged.

# MINING AND QUARRYING

## Table 7 : Slate - Production, Deliveries and Stocks

Great Britain

Tonnes

	Production			Deliveries			Stocks (a)			Deliveries
	Roofing (b)	Other (c)	Powder & Granules	Roofing (b)	Other (c)	Powder & Granules	Roofing (b)	Other (c)	Powder & Granules	Fill & Other Uses
2001	30,770	14,834	47,521	33,052	13,586	47,588	3,159	8,465	2,799	383,353
2002	32,182	18,348	44,424	32,653	19,069	43,947	2,674	7,850	3,275	498,212
2003	34,471	15,623	29,003	34,700	14,576	29,240	2,477	8,849	3,416	669,818
2004	..	..	..	..	..	..	..	..	..	..
2005	..	..	..	..	..	..	2,824	10,281	5,347	..
2006	..	61,612	22,967	..	64,037	22,719	..	6,454	4,274	860,395
2007	..	65,260	19,141	..	62,646	19,431	2,563	2,521	3,746	..
2008	..	59,644	16,915	..	58,129	18,402	..	2,749	2,253	..
2009	..	33,759	9,150	22,555	34,322	10,637	2,420	2,186	766	615,346
2010	..	28,001	..	..	27,355	..	..	3,063	..	582,111
2011	..	30,665	..	..	30,437	..	..	3,245	..	662,003
2012	..	29,634	..	..	28,083	..	..	3,262	..	607,127
2004 Q4	..	..	..	..	..	..	..	..	..	..
2005 Q1	..	..	..	..	..	..	..	..	..	..
Q2	..	..	..	..	..	..	..	..	..	..
Q3	..	..	..	..	..	..	..	..	..	..
Q4	..	13,635	7,448	..	6,194	7,635	2,824	10,281	5,347	124,188
2006 Q1	..	11,594	6,575	..	12,879	6,406	3,170	8,967	5,440	195,762
Q2	..	14,804	5,051	..	14,983	5,257	3,079	7,424	3,990	223,696
Q3	..	16,170	5,194	..	16,803	5,094	..	6,792	4,090	251,314
Q4	..	19,044	6,147	..	19,372	5,962	..	6,454	4,274	189,623
2007 Q1	..	17,787	5,571	..	16,829	5,036	6,984	4,996	4,571	376,876
Q2	..	16,577	4,315	..	14,765	4,875	3,066	5,850	4,011	346,426
Q3	..	16,017	4,672	..	15,475	4,929	2,977	6,391	3,754	..
Q4	..	14,879	4,583	..	15,577	4,591	2,563	2,521	3,746	255,249
2008 Q1	..	18,608	4,282	..	18,071	4,414	..	3,059	3,594	246,495
Q2	..	15,465	4,738	..	14,457	4,862	..	3,801	3,484	..
Q3	..	13,811	3,843	..	13,841	5,511	3,851	2,749	1,816	..
Q4	..	11,760	4,052	..	11,760	3,615	..	2,749	2,253	..
2009 Q1	..	7,370	2,128	5,315	7,688	2,724	..	2,431	1,658	148,722
Q2	5,084	9,124	2,046	5,328	9,319	3,385	4,142	2,236	318	169,661
Q3	5,503	8,263	2,046	6,534	8,267	2,163	3,111	2,232	201	154,862
Q4	4,687	9,002	2,930	5,378	9,048	2,365	2,420	2,186	766	142,101
2010 Q1	..	6,772	..	..	6,662	..	..	2,296	..	88,805
Q2	..	7,517	..	..	7,388	..	2,049	3,284	683	175,098
Q3	..	7,335	..	..	7,184	..	1,326	3,332	281	159,574
Q4	4,907	6,377	..	4,909	6,121	..	..	3,063	..	158,634
2011 Q1	4,736	6,516	3,314	4,449	6,504	3,399	..	3,029	..	198,547
Q2	4,677	8,167	3,370	4,630	8,187	3,094	2,012	3,009	472	216,524
Q3	..	9,851	..	..	9,732	..	..	3,128	..	139,359
Q4	..	6,131	..	..	6,014	..	..	3,245	..	107,573
2012 Q1	..	9,247	..	..	8,829	..	..	2,646	..	131,311
Q2 (R)	..	8,216	..	..	9,677	..	..	1,154	..	177,748
Q3 (R)	..	6,219	..	..	6,167	..	..	1,206	..	146,152
Q4 (R)	..	5,952	..	..	3,410	..	..	3,262	..	151,916

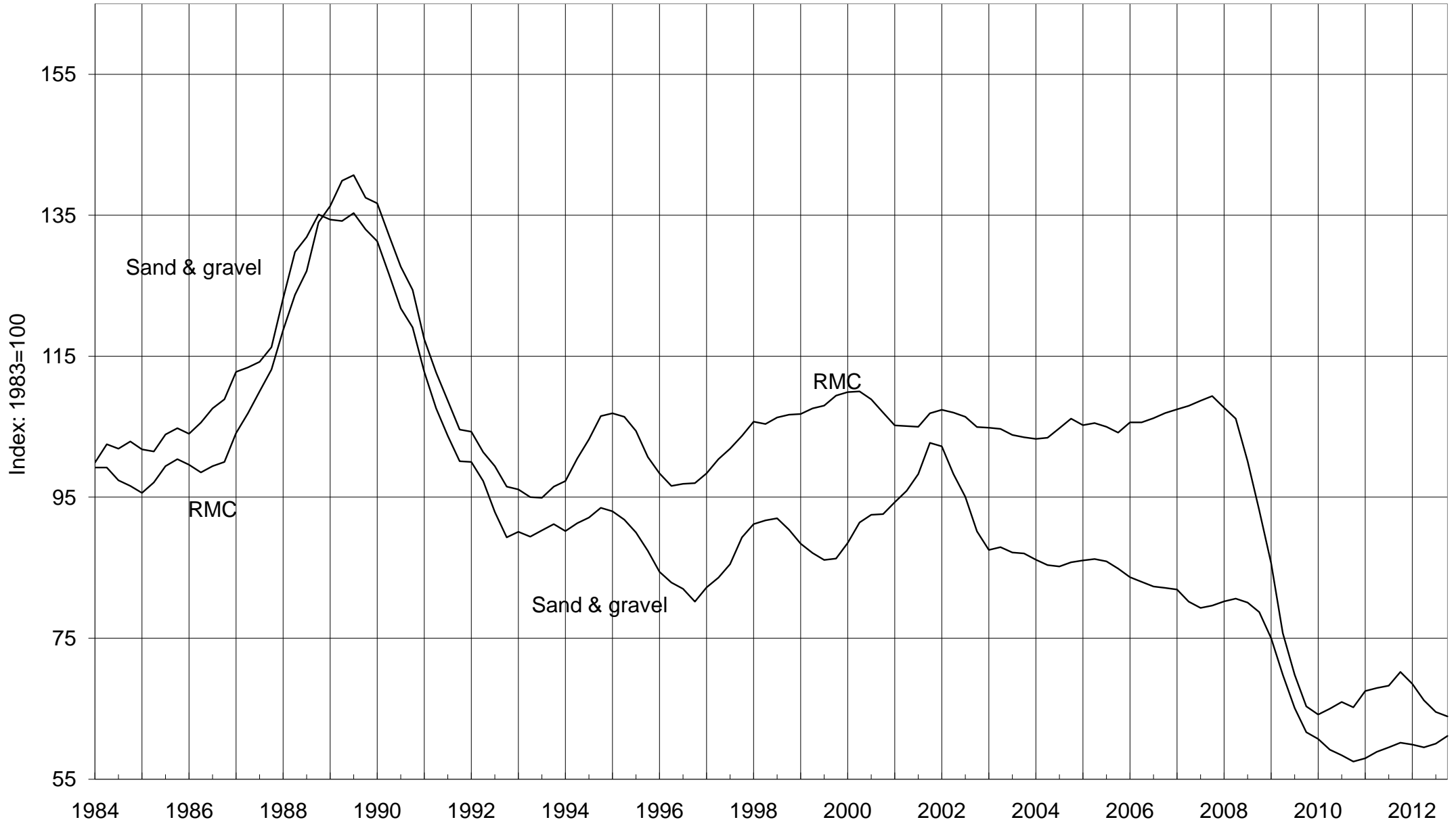
Note : 1) We have improved our sampling panel to include some new sites and have removed some non-pure slate sites. In line with the Code of Practice we have revised the data for Q2, Q3 and Q4 2010.

2) From Q1 1995, the coverage of 'powder & granules' has been extended to include non-quarry manufacture; and 'crude blocks' are included in 'other' manufacture slate.

- (a) Refers to stocks at the end of the period.
- (b) Consists of all slate tiles which could be used as roofing tiles.
- (c) Consists of all slate products for cladding and decorative uses

# Deliveries of Sand & Gravel and RMC

4-quarter moving average



The data is taken from Tables 4 & 13

**Table 8 : Cement & Clinker - Production, Deliveries and Stocks**

Great Britain

Thousand tonnes

		Cement					Cementitious Material		Clinker
		Production	Exports	Deliveries	Imports (into GB)		other	total	Production
		of which	(from GB)	(into GB from GB production)	by 'Manuf.	by Others**			
2007		11,887	74	11,638	255	1,121	2,769	15,783	10,227
2008		10,071	61	9,937	283	1,084	2,432	13,660	8,700
2009		7,623	21	7,474	99	1,085	1,680	10,338	6,421
2010		7,883	0	7,767	61	1,153	1,535	10,515	6,598
2011		8,529	0	8,318	86	1,173	1,736	11,312	7,096
2012		7,952	0	7,728	61	..	..	..	6,555
2007	Q1	2,678	27	2,779	43	271	643	3,735	2,021
	Q2	3,188	22	3,061	59	297	701	4,117	2,812
	Q3	3,130	9	3,011	84	294	746	4,135	2,751
	Q4	2,891	16	2,787	69	259	681	3,796	2,643
2008	Q1	2,609	18	2,551	88	268	598	3,505	2,267
	Q2	2,803	18	2,816	94	327	682	3,917	2,366
	Q3	2,520	13	2,496	72	263	648	3,445	2,202
	Q4	2,139	12	2,074	29	226	505	2,793	1,865
2009	Q1	1,762	14	1,782	37	256	410	2,485	1,378
	Q2	2,004	1	1,970	21	279	451	2,721	1,587
	Q3	1,998	5	1,999	25	283	453	2,760	1,831
	Q4	1,859	1	1,723	17	268	366	2,373	1,624
2010	Q1	1,726	0	1,744	24	246	336	2,350	1,261
	Q2	2,157	0	2,154	8	345	416	2,923	1,745
	Q3	2,203	0	2,195	17	310	450	2,971	1,880
	Q4	1,796	0	1,674	12	252	332	2,270	1,713
2011	Q1	1,979	0	2,043	12	281	402	2,738	1,427
	Q2	2,245	0	2,165	25	319	448	2,956	1,791
	Q3	2,246	0	2,200	25	303	494	3,022	2,015
	Q4	2,059	0	1,909	24	270	392	2,595	1,863
2012	Q1	1,880	0	1,928	16	285	370	2,599	1,366
	Q2	2,073	0	1,974	13	285	390	2,662	1,736
	Q3	2,120	0	2,021	13	305	446	2,785	1,722
	Q4	1,879	0	1,805	20	..	..	..	1,731
2012	Jan	513	0	558	4	..	..	..	320
	Feb	602	0	612	4	..	..	..	384
	Mar	765	0	757	8	..	..	..	661
	Apr	678	0	610	4	..	..	..	579
	May	726	0	741	4	..	..	..	563
	Jun	668	0	622	4	..	..	..	594
	Jul	736	0	692	4	..	..	..	630
	Aug	682	0	687	4	..	..	..	547
	Sep	701	0	642	4	..	..	..	545
	Oct	692	0	733	4	..	..	..	566
	Nov	674	0	668	8	..	..	..	536
	Dec	513	0	404	8	..	..	..	629
2013	Jan	Updates to table 8 have been temporarily suspended <sup>1</sup>							

1. Updates to table 8 have been temporarily suspended due to late returns

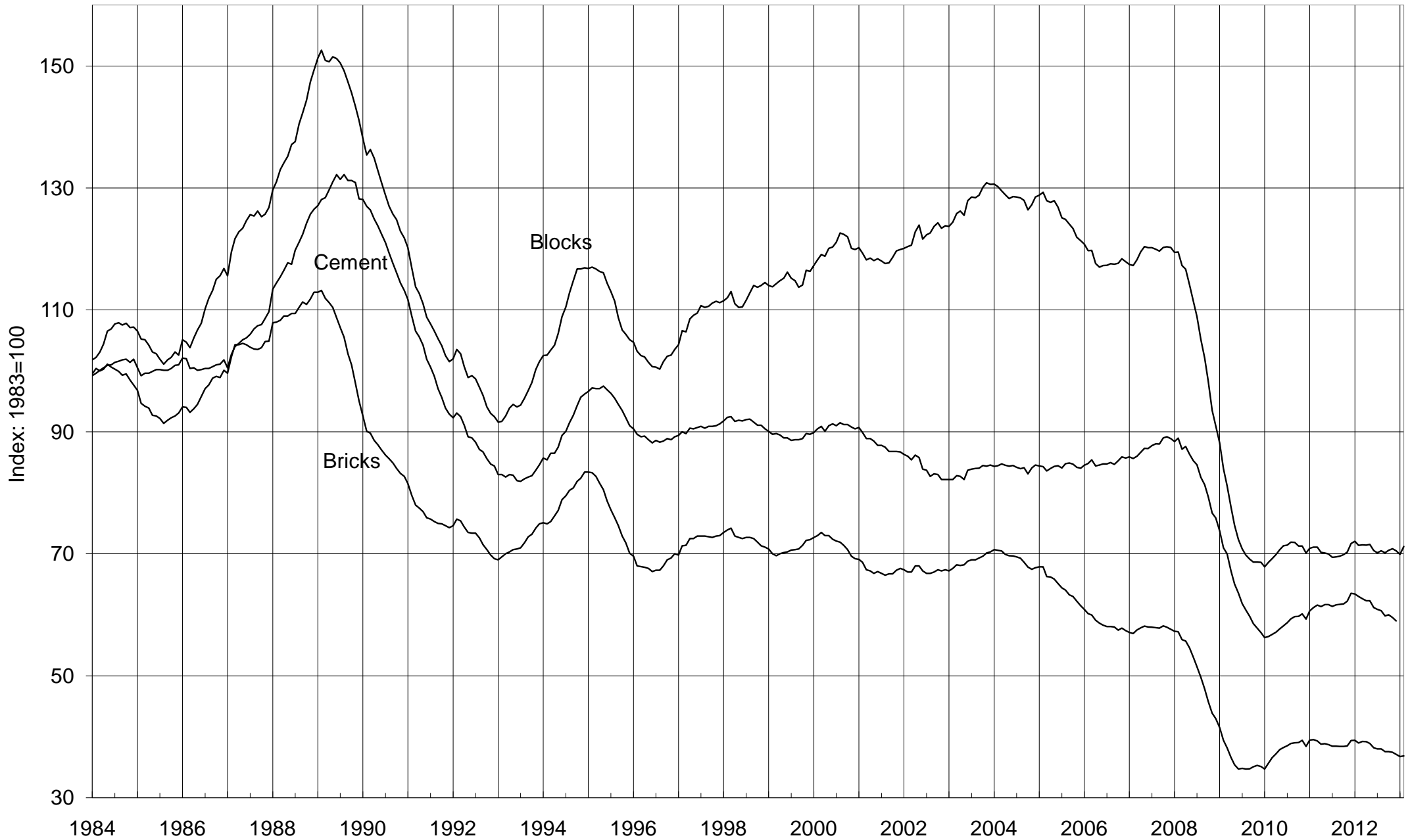
**NB** Where the coverage is for Great Britain, the figures for imports & exports are defined accordingly and have been estimated.

Cementitious material covers cement itself, fly ash to EN 450 Part 1 where used as part of the cement in concrete (previously known as pulverised fuel ash (pfa) to BS 3892 Part 1) and ground granulated blast furnace slag (ggbs) to EN 15167 Part 1 (previously BS 6699) \* Refers to stocks at end of period \*\* Estimated



# Deliveries of Bricks, Blocks & Cement

12-month moving totals



The data is taken from tables 8, 9 and 11. See footnotes on table 11 concerning data from December 2011 to June 2012.

## BRICKS

Table 9 : Bricks - Production, Deliveries and Stocks

Great Britain

		Production	Deliveries (from)	Stocks*	Production	Deliveries (from)	Stocks*
<b>(a) Brick Type</b>		<u>All Types</u>			<u>Commons</u>		
2008		1,929	1,796	1,105	246	242	151
2009		1,257	1,469	887	185	224	108
2010		1,430	1,606	702	182	194	94
2011		1,554	1,646	610	172	185	82
2012		1,459	1,551	515	137	166	52
2011	Q4	360	365	610	38	41	82
2012	Q1	370	391	588	32	45	68
	Q2	408	397	599	35	41	62
	Q3	370	418	552	37	45	54
	Q4	311	345	515	33	35	52
2012	February	127	111	622	11	11	80
	March	136	170	588	10	22	68
	April	129	131	586	12	14	66
	May	144	142	589	12	15	63
	June	134	124	599	11	12	62
	July	126	140	586	12	16	58
	August	115	146	555	11	15	55
	September	129	132	552	14	15	54
	October	132	141	542	13	14	53
	November	116	132	523	12	13	52
	December	64	72	515	8	8	52
2013	January	101	96	520	10	11	51
	February (P)	112	114	518	10	11	51
<b>(b) Material Type</b>		<u>All Materials</u>			<u>Clay#</u>		
2008		1,929	1,796	1,105	1,814	1,676	1,093
2009		1,257	1,469	887	..	..	..
2010		1,430	1,606	702	..	..	..
2011		1,554	1,646	610	..	..	..
2012		1,459	1,551	515	..	..	..
2011	Q4	360	365	610	..	..	..
2012	Q1	370	391	588	..	..	..
	Q2	408	397	599	..	..	..
	Q3	370	418	552	..	..	..
	Q4	311	345	515	..	..	..
2012	February	127	111	622	..	..	..
	March	136	170	588	..	..	..
	April	129	131	586	..	..	..
	May	144	142	589	..	..	..
	June	134	124	599	..	..	..
	July	126	140	586	..	..	..
	August	115	146	555	..	..	..
	September	129	132	552	..	..	..
	October	132	141	542	..	..	..
	November	116	132	523	..	..	..
	December	64	72	515	..	..	..
2013	January	101	96	520	..	..	..
	February (P)	112	114	518	..	..	..

\* Refers to stocks at end of period

#Sand-lime bricks are included with clay bricks

Millions

Production	Deliveries (from)	Stocks*	Production	Deliveries (from)	Stocks*	
						<b>(a) Brick Type</b>
Facings			Engineering			
1,514	1,386	895	170	168	58	2008
973	1,135	732	99	109	48	2009
1,124	1,280	570	124	132	39	2010
1,230	1,304	494	152	157	34	2011
1,172	1,239	425	150	146	38	2012
288	291	494	34	33	34	2011 Q4
298	310	483	40	36	38	2012 Q1
334	320	497	39	37	40	Q2
292	332	457	41	41	40	Q3
248	277	425	30	33	38	Q4
103	88	503	13	12	39	2012 February
113	133	483	14	15	38	March
108	105	486	10	12	35	April
119	114	490	14	13	37	May
107	100	497	15	12	40	June
101	111	487	13	13	40	July
90	117	461	13	15	39	August
101	105	457	14	13	40	September
105	114	448	13	13	41	October
92	105	432	12	13	40	November
51	58	425	5	7	38	December
77	75	428	13	10	41	2013 January
92	92	427	10	11	40	February (P)
						<b>(b) Material Type</b>
Sand-Lime#			Concrete			
..	..	..	115	120	11	2008
..	..	..	..	..	..	2009
..	..	..	..	..	..	2010
..	..	..	..	..	..	2011
..	..	..	..	..	..	2012
..	..	..	..	..	..	2011 Q4
..	..	..	..	..	..	2012 Q1
..	..	..	..	..	..	Q2
..	..	..	..	..	..	Q3
..	..	..	..	..	..	Q4
..	..	..	..	..	..	2012 February
..	..	..	..	..	..	March
..	..	..	..	..	..	April
..	..	..	..	..	..	May
..	..	..	..	..	..	June
..	..	..	..	..	..	July
..	..	..	..	..	..	August
..	..	..	..	..	..	September
..	..	..	..	..	..	October
..	..	..	..	..	..	November
..	..	..	..	..	..	December
..	..	..	..	..	..	2013 January
..	..	..	..	..	..	February (P)

Note: Data covering January 2009 to February 2011 were revised in the December 2011 edition of this bulletin. These data are included in this table. For more information on revisions, see the *Pre-announcements and Summary of Revisions to 'Monthly Statistics of Building Materials and Components' Publication* document on our website.

## BRICKS

Table 10 : Brick Production, Deliveries and Stocks by English region, Wales and Scotland

	North East	Yorks & Humber	North West	West Midlands	East Midlands	East of England
(a) Commons				#		#
Production						
2012	..	..	..	10,289	40,963	..
2012 Q1	..	..	1,688	2,655	11,228	..
Q2	..	..	..	2,592	9,452	..
Q3	..	631	..	2,599	10,654	..
Q4	..	..	..	2,443	9,629	..
2013 January	..	..	..	602	2,819	..
Deliveries (from)						
2012	..	..	..	11,327	43,004	..
2012 Q1	..	..	1,660	3,274	10,680	..
Q2	..	..	1,466	2,954	10,501	..
Q3	..	738	1,949	2,777	12,201	..
Q4	..	308	..	2,322	9,622	..
2013 January	..	244	553	530	2,700	..
Stocks *						
2012	2,723	1,447	3,900	4,142	11,933	..
2012 Q1	..	1,181	3,762	4,561	14,630	..
Q2	3,818	1,227	4,074	4,199	13,546	..
Q3	4,155	1,120	3,877	4,021	11,965	..
Q4	2,723	1,447	3,900	4,142	11,933	..
2013 January	2,944	1,337	3,789	4,214	12,046	..
(b) Facings						
Production						
2012	..	..	..	..	342,094	..
2012 Q1	..	17,283	..	84,550	78,853	..
Q2	..	16,062	18,875	96,418	89,136	..
Q3	..	17,805	12,493	71,525	88,946	..
Q4	..	..	13,044	..	85,159	..
2013 January	..	5,432	4,515	17,146	22,256	..
Deliveries (from)						
2012	..	68,227	71,203	289,575	364,569	..
2012 Q1	..	17,083	17,294	70,577	86,241	..
Q2	..	18,966	16,565	75,506	92,062	..
Q3	..	17,491	19,532	79,399	100,067	..
Q4	..	14,687	17,812	64,093	86,199	..
2013 January	..	3,415	4,813	16,848	21,610	..
Stocks *						
2012	..	17,822	28,357	106,214	123,367	..
2012 Q1	..	20,704	37,854	110,651	..	..
Q2	..	17,800	40,164	131,563	..	..
Q3	..	18,114	33,125	123,689	..	..
Q4	..	17,822	28,357	106,214	123,367	..
2013 January	..	19,839	28,059	106,512	124,013	..
(c) Engineering #						
Production						
2012	..	..	..	86,776	..	..
2012 Q1	..	..	..	23,278	..	..
Q2	..	..	..	22,511	..	..
Q3	..	..	..	24,005	0	..
Q4	..	..	..	16,982	..	..
2013 January	..	..	..	8,804	0	..
Deliveries (from)						
2012	..	..	..	78,754	..	..
2012 Q1	..	..	..	19,516	..	..
Q2	..	..	..	19,033	..	..
Q3	..	..	..	22,152	..	..
Q4	..	..	..	18,053	..	..
2013 January	..	..	..	5,065	..	..
Stocks *						
2012	..	..	3,358	18,475	..	..
2012 Q1	..	..	3,711	14,215	..	..
Q2	..	..	4,261	17,693	..	..
Q3	..	..	4,833	19,546	..	..
Q4	..	..	3,358	18,475	..	..
2013 January	..	..	2,302	22,214	..	..

Note : Regions now use Government Office boundaries

\* Refers to stocks at end of period.

South East	South West	England	Wales	Scotland	Great Britain	
#	#					
..	..	..	..	..	136,695	<b>(a) Commons</b>
..	..	..	..	..	31,615	Production
..	..	..	..	..	34,660	2012
..	..	..	..	..	37,140	2012 Q1
..	..	..	..	..	33,280	Q2
..	..	..	..	..	10,435	Q3
..	..	..	..	0	10,435	Q4
..	..	..	..	..	166,284	2013 January
..	..	..	..	..	45,219	Deliveries (from)
..	..	..	..	..	40,587	2012
..	..	..	..	..	45,120	2012 Q1
..	..	..	..	..	35,358	Q2
..	..	..	..	..	11,005	Q3
..	..	..	..	..	11,005	Q4
..	..	..	..	..	51,883	2013 January
..	1,781	..	..	..	67,985	Stocks *
..	1,738	..	..	..	62,023	2012
..	1,393	..	..	..	54,009	2012 Q1
..	..	..	..	..	51,883	Q2
..	1,320	..	..	0	51,307	Q3
..	..	..	..	..	51,307	Q4
..	..	..	..	..	51,307	2013 January
206,519	..	..	..	..	1,172,281	<b>(b) Facings</b>
52,004	..	..	..	..	298,422	Production
55,955	..	..	..	..	333,777	2012
52,403	..	..	..	..	292,483	2012 Q1
46,157	..	..	..	..	247,599	Q2
11,919	..	..	..	..	77,107	Q3
..	..	..	..	..	77,107	Q4
..	..	..	..	..	77,107	2013 January
204,075	..	..	..	..	1,238,790	Deliveries (from)
52,890	..	..	..	..	309,869	2012
55,365	..	..	..	..	319,528	2012 Q1
52,476	..	..	..	..	332,103	Q2
43,344	..	..	..	..	277,290	Q3
12,365	..	..	..	..	74,508	Q4
..	..	..	..	..	74,508	2013 January
..	..	..	..	..	424,953	Stocks *
52,413	..	..	..	..	482,774	2012
..	..	..	..	..	497,023	2012 Q1
..	..	..	..	..	457,403	Q2
..	..	..	..	..	424,953	Q3
..	..	..	..	..	427,552	Q4
..	..	..	..	..	427,552	2013 January
..	..	..	..	..	150,326	<b>(c) Engineering #</b>
..	..	..	..	..	39,845	Production
..	..	..	..	..	39,309	2012
..	..	..	..	..	40,812	2012 Q1
..	..	..	..	..	30,360	Q2
..	..	..	..	..	13,328	Q3
..	..	..	..	0	13,328	Q4
..	..	..	..	..	146,308	2013 January
..	..	..	..	..	36,184	Deliveries (from)
..	..	..	..	..	36,772	2012
..	..	..	..	..	40,790	2012 Q1
..	..	..	..	..	32,562	Q2
..	..	..	..	..	10,444	Q3
..	..	..	..	..	10,444	Q4
..	..	..	..	..	10,444	2013 January
..	..	..	..	..	38,081	Stocks *
..	..	..	..	..	37,724	2012
..	..	..	..	..	40,261	2012 Q1
..	..	..	..	..	40,283	Q2
..	..	..	..	..	38,081	Q3
..	..	..	..	0	40,965	Q4
..	..	..	..	0	40,965	2013 January

Note: Data covering January 2009 to February 2011 were revised in the December 2011 edition of this bulletin. These data are included in this table. For more information on revisions, see the *Summary of Revisions to Monthly Statistics of Building Materials and Components' Publication* document on our website.

## BRICKS

Table 10 (cont'd) : Brick Production, Deliveries and Stocks by English region, Wales and Scotland

	North East	Yorks & Humber	North West	West Midlands	East Midlands	East of England
<b>(d) All Bricks</b>						
Production						
2011	..	..	..	..	..	..
2012	..	..	..	..	..	..
2011 Q4	..	..	..	..	..	..
2012 Q1	..	..	..	109,511	..	..
Q2	..	..	..	119,896	..	..
Q3	..	..	..	96,878	99,600	..
Q4	..	..	..	..	..	..
2012 January	..	..	..	29,794	23,768	..
February	..	..	..	37,656	..	..
March	..	..	..	42,061	34,777	..
April	..	..	..	38,601	32,273	..
May	..	..	..	41,689	..	..
June	..	..	..	39,606	31,855	..
July	..	..	..	33,519	32,449	..
August	..	..	..	30,792	34,557	..
September	..	..	..	32,567	32,594	..
October	..	..	..	33,862	32,976	..
November	..	..	..	21,717	..	..
December	..	..	..	..	26,239	..
2013 January	..	..	..	25,781	25,075	..
Deliveries (from)						
2011	..	..	111,066	..	..	..
2012	..	..	..	374,077	..	..
2011 Q4	..	..	21,145	87,173	..	..
2012 Q1	..	..	..	92,325	..	..
Q2	..	..	..	96,286	..	..
Q3	..	..	..	102,599	..	..
Q4	..	..	..	82,867	..	..
2012 January	..	..	6,588	26,769	..	..
February	..	..	7,370	26,839	..	..
March	..	..	..	38,717	..	..
April	..	..	..	31,272	..	..
May	..	..	..	35,360	..	..
June	..	..	..	29,654	..	..
July	..	..	..	32,676	..	..
August	..	..	..	37,101	..	..
September	..	..	..	32,822	..	..
October	..	..	..	34,391	..	..
November	..	..	9,651	30,906	..	..
December	..	..	..	17,570	..	..
2013 January	..	..	..	22,041	..	..
Stocks *						
2011	..	..	45,025	111,327	..	..
2012	..	..	35,615	128,229	..	..
2011 Q4	..	..	45,025	111,327	..	..
2012 Q1	..	..	45,327	128,513	..	..
Q2	..	..	48,499	152,123	..	..
Q3	..	..	41,835	146,402	..	..
Q4	..	..	35,615	128,229	..	..
2012 January	..	..	43,883	114,352	..	..
February	..	..	46,123	125,169	..	..
March	..	..	45,327	128,513	..	..
April	..	..	45,206	135,842	..	..
May	..	..	46,699	142,171	..	..
June	..	..	48,499	152,123	..	..
July	..	..	46,228	152,966	..	..
August	..	..	41,395	146,657	..	..
September	..	..	41,835	146,402	..	..
October	..	..	41,598	145,873	..	..
November	..	..	39,055	136,684	..	..
December	..	..	35,615	128,229	..	..
2013 January	..	..	34,150	131,969	..	..

Note : Regions now use Government Office boundaries

\* Refers to stocks at end of period.

## BRICKS

Thousands

South East	South West	England	Wales	Scotland	Great Britain	
						<b>(d) All Bricks</b>
						Production
..	..	..	..	..	1,554,270	2011
..	..	..	..	..	1,459,302	2012
..	..	..	..	..	360,069	2011 Q4
..	..	..	..	..	369,882	2012 Q1
..	..	..	..	..	407,746	Q2
..	..	..	..	..	370,435	Q3
..	..	..	..	..	311,239	Q4
..	..	..	..	..	106,407	2012 January
..	..	..	..	..	127,161	February
..	..	..	..	..	136,314	March
..	..	..	..	..	129,256	April
..	..	..	..	..	144,472	May
..	..	..	..	..	134,018	June
..	..	..	..	..	126,474	July
..	..	..	..	..	114,914	August
..	..	..	..	..	129,047	September
..	..	..	..	..	131,559	October
..	..	..	..	..	115,874	November
..	..	..	..	..	63,806	December
..	..	..	..	..	100,870	2013 January
						Deliveries (from)
..	..	..	..	..	1,645,730	2011
..	..	..	..	..	1,551,382	2012
..	..	..	..	..	364,625	2011 Q4
..	..	..	..	..	391,272	2012 Q1
..	..	..	..	..	396,887	Q2
..	..	..	..	..	418,013	Q3
..	..	..	..	..	345,210	Q4
..	..	..	..	..	110,447	2012 January
..	..	..	..	..	110,539	February
..	..	..	..	..	170,286	March
..	..	..	..	..	131,332	April
..	..	..	..	..	141,852	May
..	..	..	..	..	123,703	June
..	..	..	..	..	139,759	July
..	..	..	..	..	146,186	August
..	..	..	..	..	132,068	September
..	..	..	..	..	141,460	October
..	..	..	..	..	131,642	November
..	..	..	..	..	72,108	December
..	..	..	..	..	95,957	2013 January
						Stocks *
..	..	..	..	..	609,939	2011
..	..	..	..	..	514,917	2012
..	..	..	..	..	609,939	2011 Q4
..	..	..	..	..	588,483	2012 Q1
..	..	..	..	..	599,307	Q2
..	..	..	..	..	551,695	Q3
..	..	..	..	..	514,917	Q4
..	..	..	..	..	605,861	2012 January
..	..	..	..	..	622,463	February
..	..	..	..	..	588,483	March
..	..	..	..	..	586,397	April
..	..	..	..	..	589,008	May
..	..	..	..	..	599,307	June
..	..	..	..	..	586,007	July
..	..	..	..	..	554,722	August
..	..	..	..	..	551,695	September
..	..	..	..	..	541,783	October
..	..	..	..	..	523,215	November
..	..	..	..	..	514,917	December
..	..	..	..	..	519,824	2013 January

Note: Data covering January 2009 to February 2011 were revised in the December 2011 edition of this bulletin. These data are included in this table. For more information on revisions, see the *Summary of Revisions to 'Monthly Statistics of Building Materials and Components' Publication* document on our website.

# CONCRETE PRODUCTS

## Table 11 : Concrete Blocks - Production, Deliveries and Stocks

Great Britain

	All Types			Dense		
	Production	Deliveries (from)	Stocks*	Production	Deliveries (from)	Stocks*
2002	91,474	91,342	9,014	35,744	36,019	3,963
2003	95,675	96,383	8,513	36,775	37,175	3,684
2004	96,256	94,854	10,088	37,677	37,444	3,690
2005	89,997	89,551	9,680	36,188	36,473	3,465
2006	87,510	87,015	..	34,956	34,741	..
2007	89,951	88,746	..	36,686	35,396	..
2008	67,743	67,136	8,920	29,675	29,889	3,498
2009	50,394	50,639	8,320	22,607	22,748	3,291
2010	53,629	51,758	10,152	22,393	21,731	3,833
2011	54,583	52,901	10,810	22,940	22,101	4,486
2012 (R)	51,693	52,021	10,700	21,551	22,323	3,808
2007 Q4	22,157	20,472	..	8,978	8,442	..
2008 Q1	21,131	18,855	11,749	8,564	7,853	5,075
Q2	20,231	19,714	11,977	8,767	8,677	5,107
Q3	14,894	16,309	10,224	7,131	7,576	4,479
Q4	11,487	12,259	8,920	5,214	5,783	3,498
2009 Q1	12,094	11,649	9,161	5,635	5,438	3,628
Q2	13,463	13,191	9,455	6,192	6,032	3,821
Q3	12,771	13,924	8,203	5,811	6,255	3,390
Q4	12,066	11,874	8,320	4,969	5,023	3,291
2010 Q1	12,614	12,072	8,740	5,033	4,896	3,333
Q2	14,956	14,753	8,990	6,343	6,176	3,513
Q3	15,172	14,343	9,832	6,477	6,125	3,837
Q4	10,887	10,590	10,152	4,541	4,534	3,833
2011 Q1	13,982	12,795	11,516	5,642	5,278	4,197
Q2	14,761	13,911	12,510	6,217	5,871	4,647
Q3	14,208	14,076	12,352	6,217	5,931	4,862
Q4	11,632	12,120	10,810	4,864	5,021	4,486
2012 Q1	13,323	12,642	11,493	5,374	5,426	4,456
Q2	13,268	13,235	11,595	5,535	5,824	4,209
Q3 (R)	12,584	13,795	10,471	5,360	5,773	3,773
Q4 (R)	12,519	12,349	10,700	5,281	5,300	3,808
2011 February	4,664	4,220	..	1,853	1,694	..
March	5,394	4,984	11,516	2,133	2,045	4,197
April	4,415	4,308	..	1,867	1,811	..
May	5,037	4,690	..	2,119	2,019	..
June	5,309	4,912	12,510	2,231	2,041	4,647
July	4,805	4,574	..	2,088	1,935	..
August	4,413	4,675	..	2,073	1,987	..
September	4,990	4,826	12,352	2,056	2,009	4,862
October	4,515	4,582	..	1,863	1,904	..
November	4,244	4,375	..	1,776	1,795	..
December	2,873	3,163	10,810	1,225	1,322	4,486
January	4,229	3,870	..	1,707	1,639	..
February	4,339	3,719	..	1,843	1,653	..
March	4,754	5,053	11,493	1,824	2,133	4,456
April	4,167	4,281	..	1,746	1,874	..
May	4,842	4,756	..	2,014	2,154	..
June	4,258	4,199	11,595	1,775	1,797	4,209
July (R)	4,313	4,285	..	1,828	1,939	..
August (R)	3,927	4,931	..	1,751	1,970	..
September (R)	4,344	4,579	10,471	1,782	1,863	3,773
October (R)	4,642	4,867	..	1,945	2,074	..
November (R)	4,726	4,582	..	2,022	1,943	..
December (R)	3,151	2,900	10,700	1,314	1,283	3,808
January (P)	3,814	3,452	..	1,773	1,469	..
February (P)	3,750	4,664	..	1,405	1,934	..

\* Refers to stocks at end of period

Missing returns for provisional data (P) have been estimated using an improved methodology. See the 'pre-announcement of any major changes to samples or methodology' at: <http://www.bis.gov.uk/analysis/statistics/construction-statistics/building-materials>



# CONCRETE PRODUCTS

Thousand square metres

Lightweight			Aerated			
Production	Deliveries (from)	Stocks*	Production	Deliveries (from)	Stocks*	
23,478	23,537	2,188	32,252	31,786	2,863	2002
24,991	25,161	2,107	33,909	34,047	2,721	2003
25,462	25,736	2,271	33,117	31,674	4,127	2004
25,561	25,673	2,173	28,248	27,405	4,042	2005
25,345	25,222	..	27,209	27,051	..	2006
25,965	25,667	..	27,300	27,682	..	2007
18,168	18,363	2,149	19,900	18,884	3,273	2008
13,421	13,989	1,522	14,367	13,903	3,507	2009
14,415	13,923	2,044	16,822	16,104	4,276	2010
15,153	14,821	1,728	16,490	15,978	4,596	2011
14,383	14,103	2,024	15,759	15,595	4,868	2012 (R)
6,217	5,748	..	6,962	6,282	..	2007 Q4
5,580	5,389	2,633	6,988	5,612	4,041	2008 Q1
5,421	5,405	2,549	6,043	5,632	4,321	Q2
4,110	4,309	2,338	3,653	4,424	3,406	Q3
3,057	3,260	2,149	3,216	3,216	3,273	Q4
3,213	3,258	2,181	3,247	2,953	3,352	2009 Q1
3,498	3,553	2,125	3,773	3,607	3,510	Q2
3,293	3,765	1,544	3,667	3,903	3,269	Q3
3,416	3,412	1,522	3,681	3,439	3,507	Q4
3,344	3,252	1,601	4,238	3,924	3,806	2010 Q1
4,031	3,950	1,692	4,582	4,627	3,785	Q2
4,208	3,899	2,023	4,487	4,319	3,971	Q3
2,832	2,822	2,044	3,515	3,234	4,276	Q4
3,916	3,665	2,301	4,423	3,852	5,017	2011 Q1
4,008	3,827	2,507	4,537	4,212	5,357	Q2
3,908	3,970	2,218	4,083	4,175	5,272	Q3
3,321	3,359	1,728	3,447	3,739	4,596	Q4
3,559	3,314	1,964	4,389	3,903	5,074	2012 Q1
3,487	3,437	2,006	4,245	3,973	5,380	Q2
3,756	3,887	1,904	3,467	4,135	4,794	Q3 (R)
3,580	3,465	2,024	3,658	3,584	4,868	Q4 (R)
1,346	1,196	..	1,466	1,330	..	2011 February
1,632	1,448	2,301	1,629	1,491	5,017	March
1,188	1,201	..	1,361	1,296	..	April
1,401	1,316	..	1,517	1,355	..	May
1,420	1,311	2,507	1,658	1,561	5,357	June
1,335	1,291	..	1,383	1,348	..	July
1,306	1,327	..	1,034	1,361	..	August
1,267	1,352	2,218	1,666	1,466	5,272	September
1,166	1,265	..	1,487	1,414	..	October
1,386	1,271	..	1,082	1,308	..	November
769	823	1,728	878	1,017	4,596	December
1,165	990	..	1,357	1,241	..	January
1,112	998	..	1,384	1,068	..	February
1,281	1,326	1,964	1,648	1,594	5,074	March
1,106	1,100	..	1,315	1,307	..	April
1,303	1,230	..	1,525	1,371	..	May
1,078	1,107	2,006	1,405	1,295	5,380	June
1,206	1,155	..	1,280	1,191	..	July (R)
1,337	1,430	..	839	1,530	..	August (R)
1,213	1,302	1,904	1,348	1,414	4,794	September (R)
1,393	1,453	..	1,304	1,340	..	October (R)
1,333	1,308	..	1,371	1,330	..	November (R)
854	704	2,024	983	914	4,868	December (R)
830	980	..	1,210	1,003	..	January (P)
1,096	1,273	..	1,249	1,457	..	February (P)

Data from December 2011 to June 2012 has been revised following receipt of corrected data. The period August 2007 to November 2011 may also be affected, but non-availability of a back-series of corrected data means that this period cannot be revised, and should be treated with caution. Full details are available in the 'Summary of revision to monthly statistics of building materials and components publication' document at: <http://www.bis.gov.uk/analysis/statistics/construction-statistics/building-materials>

# CONCRETE PRODUCTS

**Table 12 : Concrete Blocks : Production, Deliveries and Stocks by English Region, Wales and Scotland**

	North East	Yorks & Humber	North West	West Midlands	East Midlands	East of England
<b>(a) Dense aggregate</b>						
Production						
2012 (R)	..	..	2,207	..	..	..
2011 Q4	74	..	482	..	..	..
2012 Q1	64	..	548	..	..	..
Q2	84	..	592	..	..	..
Q3 (R)	73	..	547	..	..	..
Q4 (R)	..	..	520	..	..	..
Deliveries (from)						
2012 (R)	271	..	2,148	..	..	..
2011 Q4	78	..	519	..	..	..
2012 Q1	71	..	507	..	..	..
Q2	74	..	607	..	..	..
Q3 (R)	66	..	596	..	..	..
Q4 (R)	61	..	438	..	..	..
Stocks *						
2012 (R)	..	231	295	..	..	..
2011 Q4	74	294	249	..	..	..
2012 Q1	65	308	290	..	814	..
Q2	75	369	275	..	800	..
Q3 (R)	83	246	213	..	..	..
Q4 (R)	..	231	295	..	..	..
<b>(b) Other (1)</b>						
Production						
2012 (R)	..	..	1,899	..	..	..
2011 Q4	273	..	499	..	..	..
2012 Q1	257	..	440	..	..	..
Q2	286	..	511	..	..	..
Q3 (R)	289	..	498	..	..	..
Q4 (R)	..	..	449	..	..	..
Deliveries (from)						
2012 (R)	1,114	..	1,892	..	..	..
2011 Q4	243	..	455	..	..	..
2012 Q1	262	..	445	..	..	..
Q2	288	..	505	..	..	..
Q3 (R)	311	..	510	..	..	..
Q4 (R)	254	..	432	..	..	..
Stocks *						
2012 (R)	..	1,434	174	..	..	..
2011 Q4	135	1,474	162	..	..	..
2012 Q1	118	1,385	157	..	341	..
Q2	117	1,559	164	..	538	..
Q3 (R)	92	1,376	157	..	..	..
Q4 (R)	..	1,434	174	..	..	..
<b>(c) Total</b>						
Production						
2012 (R)	1,377	9,437	4,105	4,113	6,418	4,918
2011 Q4	346	2,412	980	867	1,232	1,050
2012 Q1	322	2,217	988	1,120	1,713	1,584
Q2	370	2,381	1,104	1,030	1,655	1,458
Q3 (R)	362	2,335	1,045	1,042	1,497	1,001
Q4 (R)	324	2,505	969	921	1,553	875
Deliveries (from)						
2012 (R)	1,385	9,475	4,040	4,046	6,106	5,002
2011 Q4	321	2,431	974	793	1,383	1,254
2012 Q1	332	2,292	952	791	1,520	1,349
Q2	362	2,146	1,112	970	1,472	1,565
Q3 (R)	377	2,577	1,106	1,208	1,620	1,200
Q4 (R)	314	2,461	870	1,076	1,495	888
Stocks *						
2012 (R)	184	1,665	469	468	1,218	481
2011 Q4	209	1,769	411	345	961	437
2012 Q1	183	1,693	447	678	1,154	665
Q2	191	1,928	439	779	1,338	580
Q3 (R)	174	1,621	370	624	1,160	494
Q4 (R)	184	1,665	469	468	1,218	481

Note : Regions refer to Government Office Regions

\* Refers to stocks at end of period.

# CONCRETE PRODUCTS

Thousand square metres

South East	South West	England	Wales	Scotland	Great Britain	
						<b>(a) Dense aggregate</b>
						Production
..	5,629	..	3,527	..	21,551	2012 (R)
411	1,228	..	710	..	4,864	2011 Q4
..	1,457	4,171	801	403	5,374	2012 Q1
..	1,357	..	825	..	5,535	Q2
..	1,370	3,920	882	558	5,360	Q3 (R)
..	1,445	3,799	1,020	463	5,281	Q4 (R)
						Deliveries (from)
..	5,779	16,219	4,019	2,084	22,323	2012 (R)
414	1,337	..	696	..	5,021	2011 Q4
..	1,487	4,067	976	382	5,426	2012 Q1
..	1,409	4,160	1,132	533	5,824	Q2
..	1,441	4,240	900	634	5,773	Q3 (R)
..	1,442	3,752	1,011	536	5,300	Q4 (R)
						Stocks *
121	..	3,113	390	305	3,808	2012 (R)
..	1,458	..	..	302	4,486	2011 Q4
184	1,484	3,441	735	280	4,456	2012 Q1
..	1,428	3,477	398	334	4,209	Q2
..	1,362	3,024	382	367	3,773	Q3 (R)
121	..	3,113	390	305	3,808	Q4 (R)
						<b>(b) Other (1)</b>
						Production
..	1,068	..	445	..	30,142	2012 (R)
1,720	287	..	92	..	6,768	2011 Q4
..	315	7,818	111	20	7,948	2012 Q1
..	282	..	102	..	7,732	Q2
..	269	7,071	117	35	7,224	Q3 (R)
..	201	7,090	115	34	7,238	Q4 (R)
						Deliveries (from)
..	1,003	29,183	415	100	29,698	2012 (R)
1,772	304	..	108	..	7,098	2011 Q4
..	298	7,108	94	14	7,217	2012 Q1
..	264	7,291	106	14	7,411	Q2
..	241	7,874	116	31	8,022	Q3 (R)
..	200	6,910	99	40	7,049	Q4 (R)
						Stocks *
3,608	..	6,766	88	38	6,892	2012 (R)
..	203	..	..	29	6,324	2011 Q4
3,659	226	6,933	74	31	7,038	2012 Q1
..	232	7,284	71	31	7,386	Q2
..	253	6,582	72	45	6,698	Q3 (R)
3,608	..	6,766	88	38	6,892	Q4 (R)
						<b>(c) Total</b>
						Production
8,595	6,697	45,660	3,973	2,061	51,693	2012 (R)
2,131	1,515	10,533	802	298	11,632	2011 Q4
2,274	1,772	11,989	911	422	13,323	2012 Q1
2,155	1,639	11,791	928	549	13,268	Q2
2,071	1,640	10,992	999	593	12,584	Q3 (R)
2,096	1,646	10,888	1,135	496	12,519	Q4 (R)
						Deliveries (from)
8,567	6,782	45,403	4,434	2,184	52,021	2012 (R)
2,186	1,642	10,983	804	333	12,120	2011 Q4
2,155	1,785	11,176	1,071	396	12,642	2012 Q1
2,151	1,673	11,451	1,238	546	13,235	Q2
2,345	1,682	12,114	1,016	665	13,795	Q3 (R)
1,916	1,642	10,662	1,110	577	12,349	Q4 (R)
						Stocks *
3,728	1,666	9,879	478	343	10,700	2012 (R)
3,724	1,661	9,516	963	331	10,810	2011 Q4
3,842	1,711	10,373	810	311	11,493	2012 Q1
3,846	1,660	10,761	469	365	11,595	Q2
3,548	1,615	9,606	454	412	10,471	Q3 (R)
3,728	1,666	9,879	478	343	10,700	Q4 (R)

(1) Lightweight aggregate including aerated concrete blocks where appropriate.

Data from December 2011 to June 2012 has been revised following receipt of corrected data. The period August 2007 to November 2011 may also be affected, but non-availability of a back-series of corrected data means that this period cannot be revised, and should be treated with caution. Full details are available in the 'Summary of revision to monthly statistics of building materials and components publication' document on our website.

# OTHER BUILDING MATERIALS

## Table 13 : Other Building Materials

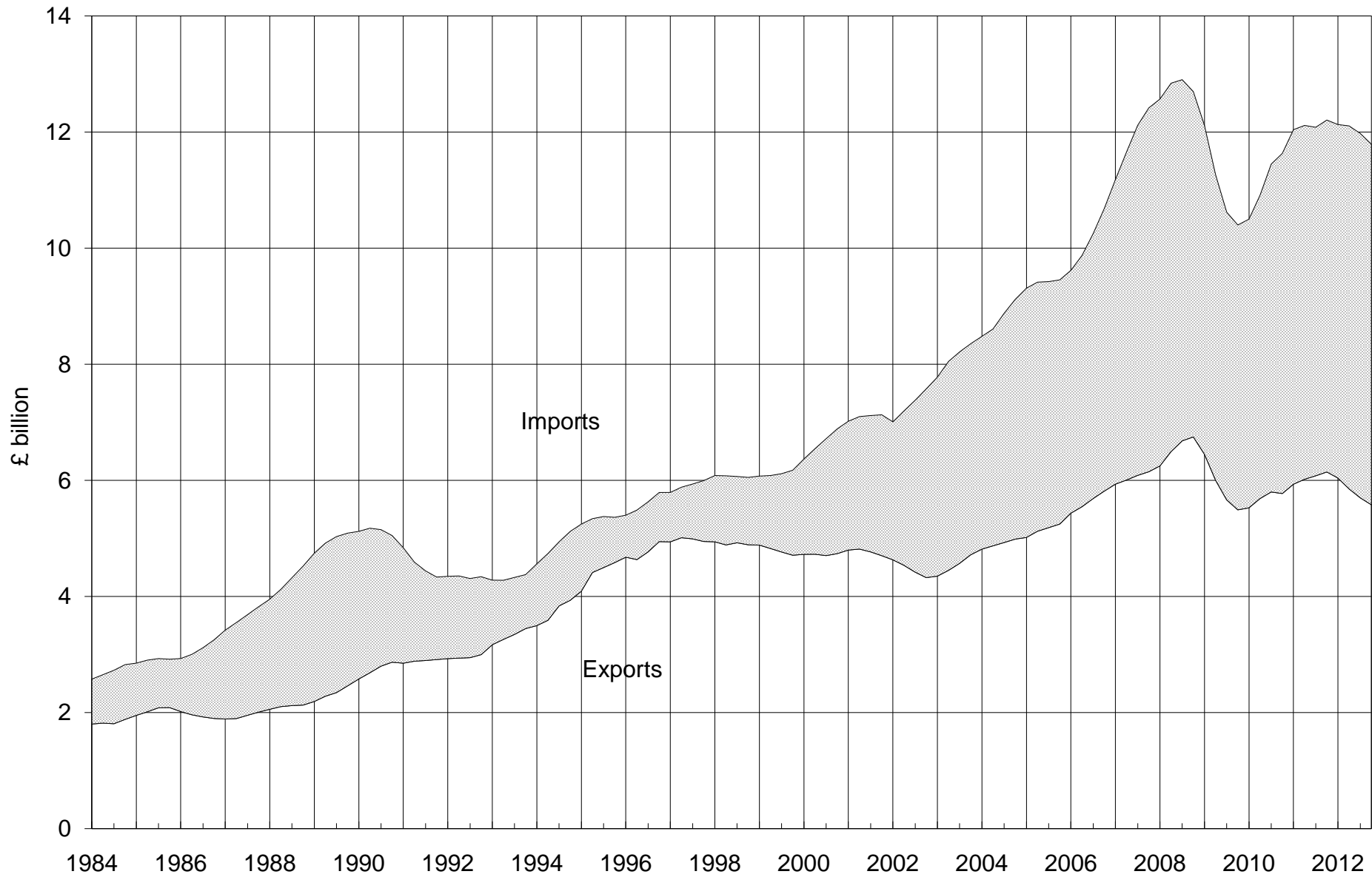
		Great Britain			United Kingdom
		Concrete Roofing Tiles (Th.sq.m. of roof area covered)			Ready-Mixed Concrete # (Th.cu.m.)
		Production	Deliveries	Stocks *	Deliveries
2002		25,023	24,390	4,586	22,597
2003		21,437	21,401	2,982	22,289
2004		20,739	19,403	2,850	22,856
2005		25,719	24,489	4,902	22,432
2006		23,730	24,118	4,426	23,029
2007		23,551	23,812	3,646	23,548
2008		20,084	19,926	3,899	20,051
2009		14,079	15,612	2,344	14,069
2010		17,817	17,146	3,023	14,038
2011		17,712	17,684	3,126	15,121
2012		17,224	17,159	3,191	13,758
2003	Q4	5,418	4,785	2,982	5,259
2004	Q1	5,498	4,294	3,787	5,334
	Q2	5,266	4,800	3,728	5,931
	Q3	4,920	5,134	3,048	6,038
	Q4	5,055	5,175	2,850	5,553
2005	Q1	5,787	4,779	3,732	5,137
	Q2	7,502	6,406	5,818	5,994
	Q3	6,135	7,103	4,850	5,920
	Q4	6,295	6,200	4,902	5,381
2006	Q1	6,792	6,252	5,418	5,445
	Q2	6,002	5,709	5,708	5,995
	Q3	5,448	6,371	4,688	6,047
	Q4	5,489	5,787	4,426	5,542
2007	Q1	6,618	5,629	5,368	5,554
	Q2	5,775	5,728	5,360	6,103
	Q3	5,129	6,541	3,929	6,205
	Q4	6,028	5,914	3,646	5,686
2008	Q1	5,708	5,421	3,922	5,193
	Q2	5,815	5,679	4,488	5,773
	Q3	4,657	4,977	3,840	4,902
	Q4	3,903	3,849	3,899	4,183
2009	Q1	3,664	3,281	4,273	3,583
	Q2	3,055	3,936	3,391	3,637
	Q3	3,580	4,447	2,522	3,628
	Q4	3,779	3,949	2,344	3,221
2010	Q1	4,129	3,505	2,967	3,328
	Q2	4,961	4,922	3,008	3,819
	Q3	4,783	4,824	2,967	3,831
	Q4	3,945	3,894	3,023	3,060
2011	Q1	4,820	4,079	3,858	3,827
	Q2	4,565	4,398	4,022	3,907
	Q3	4,210	4,901	3,316	3,908
	Q4	4,116	4,306	3,126	3,479
2012	Q1	4,673	3,928	3,872	3,463
	Q2	4,236	4,100	4,008	3,399
	Q3	3,971	4,885	3,093	3,556
	Q4	4,344	4,246	3,191	3,340

\* Refers to stocks at the end of the period.

# In April 2012, the Mineral Products Association (who provide these figures), estimated that data understates UK deliveries by around 20-25%. Previously, they had estimated that figures understate UK deliveries by 14-18%.

# Comparison of Imports & Exports

4-quarter moving totals



The data is taken from Table 14

# EXTERNAL TRADE

**Table 14 : Value of Overseas Trade in Selected Materials and Components  
for Constructional Use : Imports (cif) & Exports (fob)**

United Kingdom		Current Prices (£'000)					
		2007	2008	2009	2010	2011	2012
<b>All Building Materials &amp; Components</b>	Imports	12,415,890	12,697,046	10,399,489	11,632,361	12,206,507	11,791,039
	Exports	6,147,721	6,747,415	5,491,055	5,772,232	6,143,891	5,578,846
	Balance	(6,268,169)	(5,949,631)	(4,908,434)	(5,860,129)	(6,062,616)	(6,212,193)
<b>All Raw Materials</b>	Imports	213,589	228,019	158,706	174,275	200,736	172,072
	Exports	124,957	116,930	135,125	132,349	140,525	79,832
	Balance	(88,632)	(111,089)	(23,581)	(41,926)	(60,211)	(92,240)
Sand for construction	Imports	6,455	6,369	5,916	5,259	7,558	8,509
	Exports	7,769	9,373	7,967	7,398	7,783	6,489
Crushed Rock : uncoated	Imports	38,882	43,442	32,030	36,490	41,280	30,689
	Exports	71,990	77,930	76,898	73,902	78,237	62,807
Crushed Rock : coated	Imports	2,927	3,206	2,227	2,642	3,057	4,376
	Exports	3,937	3,862	3,061	2,988	4,727	4,200
Building Stone : unprocessed	Imports	115,064	124,436	93,174	99,236	107,354	110,791
	Exports	3,209	2,159	2,114	4,053	3,716	1,881
Slate : unprocessed	Imports	11,590	9,295	6,168	5,799	4,686	5,146
	Exports	1,579	813	1,924	844	922	886
Gypsum & Anhydrite	Imports	8,626	8,301	8,353	7,040	7,284	8,119
	Exports	493	899	768	1,148	1,035	1,141
Bituminous Shale	Imports	30,045	32,970	10,838	17,809	29,517	4,442
	Exports	35,980	21,894	42,393	42,016	44,105	2,428
<b>All Semi-Manufactures</b>	Imports	2,196,078	1,972,139	1,389,572	1,639,598	1,698,664	1,645,095
	Exports	644,415	648,822	426,190	480,686	486,111	440,570
	Balance	(1,551,663)	(1,323,317)	(963,382)	(1,158,912)	(1,212,553)	(1,204,525)
Clinker	Imports	60,554	35,973	18,520	17,331	19,940	25,772
	Exports	1,899	1,271	835	1,205	2,763	1,989
Sawn Wood > 6mm thick	Imports	915,900	610,292	554,187	705,638	622,813	624,685
	Exports	32,010	20,957	16,025	19,437	14,671	12,045
Densified Wood	Imports	2,332	1,767	1,452	2,301	1,942	2,176
	Exports	319	272	268	518	569	509
Particle Board	Imports	55,934	45,497	27,913	30,755	34,479	27,289
	Exports	9,377	8,920	8,382	8,875	8,044	9,360
Laminated Wood	Imports	282,912	296,969	215,021	146,691	133,222	120,554
	Exports	23,172	21,935	15,839	11,698	11,051	7,098
Fibreboard	Imports	72,499	61,614	56,511	53,901	60,031	59,277
	Exports	10,575	8,966	15,055	24,727	11,162	12,146
Steel for Fabrication	Imports	463,477	529,327	184,164	286,866	354,980	339,973
	Exports	257,126	301,366	185,537	216,815	206,955	175,267
Aluminium for Fabrication	Imports	277,251	315,948	268,155	325,157	408,816	391,571
	Exports	234,348	216,596	123,494	131,665	160,722	153,792
Profiles of Vinyl Chloride	Imports	41,560	44,169	44,827	35,911	25,099	27,133
	Exports	33,766	25,781	23,770	23,337	24,027	23,233
Slag for Construction	Imports	8,607	11,580	2,331	5,825	1,906	2,074
	Exports	1,231	1,018	921	1,112	1,280	1,014
Tar & Bituminous Mixtures	Imports	12,285	17,424	15,156	27,742	33,081	22,514
	Exports	27,895	27,680	22,781	27,613	26,921	25,423
Lime	Imports	2,767	1,579	1,335	1,480	2,355	2,077
	Exports	12,697	14,060	13,283	13,684	17,946	18,694

## EXTERNAL TRADE

Current Prices (£'000)

2011 Q4	2012 Q1	Q2	Q3	Q4		
2,967,894	2,975,154 (R)	3,050,540 (R)	2,982,572 (R)	2,782,773	Imports	<b>All Building Materials &amp; Components</b>
1,474,685	1,401,411 (R)	1,412,083 (R)	1,410,445 (R)	1,354,907	Exports	
(1,493,209)	(1,573,743) (R)	(1,638,457) (R)	(1,572,127) (R)	(1,427,866)	Balance	
51,862	44,525 (R)	49,156 (R)	44,049 (R)	34,342	Imports	<b>All Raw Materials</b>
31,135	15,938 (R)	21,561 (R)	22,171 (R)	20,162	Exports	
(20,727)	(28,587) (R)	(27,595) (R)	(21,878) (R)	(14,180)	Balance	
1,626	2,126	1,630 (R)	2,602	2,151	Imports	Sand for construction
1,919	1,561	1,586	1,818	1,524	Exports	
15,776	6,889 (R)	10,242 (R)	7,624 (R)	5,934	Imports	Crushed Rock : uncoated
19,841	12,218 (R)	16,984 (R)	17,879 (R)	15,726	Exports	
816	666	941	1,612	1,157	Imports	Crushed Rock : coated
1,311	534	1,311	968	1,387	Exports	
24,176	28,810	32,802 (R)	28,206 (R)	20,973	Imports	Building Stone : unprocessed
585	390	523	438	530	Exports	
954	960	1,286	1,551	1,349	Imports	Slate : unprocessed
247	343	256	156	131	Exports	
1,788	1,956	2,037	1,626 (R)	2,500	Imports	Gypsum & Anhydrite
268	343	227	374	197	Exports	
6,726	3,118	218	828	278	Imports	Bituminous Shale
6,964	549	674	538	667	Exports	
384,684	427,404 (R)	464,578 (R)	394,092 (R)	359,021	Imports	<b>All Semi-Manufactures</b>
105,704	112,959 (R)	111,765 (R)	113,682 (R)	102,164	Exports	
(278,980)	(314,445) (R)	(352,813) (R)	(280,410) (R)	(256,857)	Balance	
5,421	6,925	5,255	7,389 (R)	6,203	Imports	Clinker
657	904 (R)	383 (R)	553 (R)	149	Exports	
133,641	163,510 (R)	179,947 (R)	149,304 (R)	131,924	Imports	Sawn Wood > 6mm thick
2,747	2,833	3,444	3,099 (R)	2,669	Exports	
434	770	545	422 (R)	439	Imports	Densified Wood
118	149	101	153	106	Exports	
8,215	6,995 (R)	6,350 (R)	7,059 (R)	6,885	Imports	Particle Board
2,171	3,231	2,426	1,890	1,813	Exports	
26,778	28,074 (R)	37,329	28,388 (R)	26,763	Imports	Laminated Wood
2,355	1,972	2,293	1,465 (R)	1,368	Exports	
15,431	15,086 (R)	14,710 (R)	15,110 (R)	14,371	Imports	Fibreboard
2,748	3,453	3,354	2,616 (R)	2,723	Exports	
83,525	88,448 (R)	103,099 (R)	77,051 (R)	71,375	Imports	Steel for Fabrication
44,537	49,179	41,553	45,283 (R)	39,252	Exports	
97,195	104,260 (R)	102,484 (R)	94,558 (R)	90,269	Imports	Aluminium for Fabrication
33,286	35,314	40,602	40,050 (R)	37,826	Exports	
5,577	7,981	6,688	6,374 (R)	6,090	Imports	Profiles of Vinyl Chloride
5,126	5,779	5,177 (R)	6,169 (R)	6,108	Exports	
403	388 (R)	586 (R)	862 (R)	238	Imports	Slag for Construction
218	231	352	155	276	Exports	
7,038	4,598	7,005	7,188 (R)	3,723	Imports	Tar & Bituminous Mixtures
7,079	4,741 (R)	7,948 (R)	7,066 (R)	5,668	Exports	
1,026	369	580	387	741	Imports	Lime
4,662	5,173 (R)	4,132 (R)	5,183 (R)	4,206	Exports	

# EXTERNAL TRADE

**Table 14 : Value of Overseas Trade in Selected Materials and Components for Constructional Use : Imports (cif) & Exports (fob)**

United Kingdom		Current Prices (£'000)					
		2007	2008	2009	2010	2011	2012
<b>All Products &amp; Components</b>	Imports	10,006,223	10,496,888	8,851,211	9,818,488	10,307,107	9,973,872
	Exports	5,378,349	5,981,663	4,929,740	5,159,197	5,517,255	5,058,444
	Balance	(4,627,874)	(4,515,225)	(3,921,471)	(4,659,291)	(4,789,852)	(4,915,428)
Wood sleepers (rail & tram)	Imports	7,907	10,736	5,761	5,065	7,634	12,186
	Exports	905	1,074	688	717	893	2,849
Building Stone : processed	Imports	243,019	252,176	211,999	217,570	177,755	176,557
	Exports	34,465	38,557	37,466	30,751	10,603	10,023
Slate Roofing Tiles*	Imports	58,165	65,872	57,067	63,188	..	..
	Exports	6,941	6,559	8,552	6,286	..	..
Other Slate Products*	Imports	8,963	8,204	8,002	8,381	..	..
	Exports	2,348	1,643	1,141	1,725	..	..
Slate Products*	Imports	..	..	..	..	72,289	70,961
	Exports	..	..	..	..	7,413	6,481
Portland Cement	Imports	59,422	65,930	54,475	52,246	48,735	44,282
	Exports	26,525	13,271	4,897	4,178	5,481	5,251
Other Cements	Imports	24,705	31,452	47,618	50,669	61,532	43,552
	Exports	31,336	29,824	24,202	35,097	37,960	40,392
Steel Sheet Piling	Imports	71,747	78,763	48,577	61,527	51,576	62,909
	Exports	20,205	32,009	24,175	16,226	18,568	14,326
Ready-Mixed Concrete	Imports	686	826	711	822	36	34
	Exports	10,378	12,639	4,600	3,378	3,036	3,117
Concrete Reinforcing Bars	Imports	181,795	210,556	72,138	86,842	135,802	153,691
	Exports	107,236	194,136	68,087	60,252	46,970	55,338
Mortars	Imports	6,225	7,021	7,949	7,357	8,852	10,210
	Exports	5,772	6,410	5,360	3,757	8,936	4,776
Clay Bricks	Imports	35,245	25,877	18,675	19,778	22,918	24,048
	Exports	10,591	7,133	3,703	3,162	2,842	4,109
Clay Roofing Tiles	Imports	10,348	10,104	7,576	9,116	8,889	11,790
	Exports	303	276	511	589	207	192
Clay Pipes	Imports	669	313	146	225	258	614
	Exports	5,518	5,775	4,177	3,472	4,124	3,532
Other Clay Products	Imports	5,602	6,668	5,453	5,225	6,068	5,347
	Exports	17,502	18,852	2,851	3,188	3,566	2,702
Concrete Blocks & Bricks	Imports	11,475	8,615	4,421	4,369	7,466	8,397
	Exports	27,318	21,102	11,844	9,203	9,421	7,808
Concrete Roofing Tiles*	Imports	4,664	7,195	7,342	5,017	..	..
	Exports	7,013	3,844	2,402	2,949	..	..
Other Concrete Tiles & Paving*	Imports	16,130	18,353	15,576	13,297	..	..
	Exports	38,280	34,756	19,151	13,594	..	..
Concrete Tiles and Pavings*	Imports	..	..	..	..	19,565	18,116
	Exports	..	..	..	..	13,478	11,854
Prefabricated Concrete Products	Imports	26,763	34,841	23,582	28,811	20,514	22,998
	Exports	23,240	19,042	8,967	12,390	4,432	4,078
Concrete Pipes	Imports	32,767	36,740	40,646	45,485	61,426	51,623
	Exports	32,536	31,413	30,366	24,339	26,578	25,173



Current Prices (£'000)

2011 Q4	2012 Q1	Q2	Q3	Q4		
2,531,348	2,503,225 (R)	2,536,806 (R)	2,544,431 (R)	2,389,410	Imports	<b>All Products &amp; Components</b>
1,337,846	1,272,514 (R)	1,278,757 (R)	1,274,592 (R)	1,232,581	Exports	
(1,193,502)	(1,230,711) (R)	(1,258,049) (R)	(1,269,839) (R)	(1,156,829)	Balance	
2,012	2,158 (R)	3,310 (R)	3,391 (R)	3,327	Imports	Wood sleepers (rail & tram)
275	547	1,776	498	28	Exports	
43,568	43,854	44,986	45,389 (R)	42,328	Imports	Building Stone : processed
2,265	1,954	2,598	2,905 (R)	2,566	Exports	
..	..	..	..	..	Imports	Slate Roofing Tiles*
..	..	..	..	..	Exports	
..	..	..	..	..	Imports	Other Slate Products*
..	..	..	..	..	Exports	
17,381	16,199	18,563 (R)	18,392 (R)	17,807	Imports	Slate Products*
1,767	1,223	1,487	1,375 (R)	2,396	Exports	
12,021	12,933	10,240	11,768 (R)	9,341	Imports	Portland Cement
1,262	1,471 (R)	1,208 (R)	1,099 (R)	1,473	Exports	
13,987	11,339	11,458	11,062 (R)	9,693	Imports	Other Cements
7,922	9,434	11,435 (R)	10,006	9,517	Exports	
10,843	21,160 (R)	14,232 (R)	12,703 (R)	14,814	Imports	Steel Sheet Piling
3,545	3,378	3,438	3,241 (R)	4,269	Exports	
7	23	1	0	10	Imports	Ready-Mixed Concrete
690	792 (R)	740 (R)	905 (R)	680	Exports	
31,739	46,853	49,530	29,093 (R)	28,215	Imports	Concrete Reinforcing Bars
7,954	8,939 (R)	12,542 (R)	21,105 (R)	12,752	Exports	
2,010	2,564	2,358	2,733 (R)	2,555	Imports	Mortars
1,852	986	1,176	835 (R)	1,779	Exports	
5,730	6,503	6,264	6,475 (R)	4,806	Imports	Clay Bricks
731	789	1,129	1,252	939	Exports	
2,102	2,942	3,791	2,457	2,600	Imports	Clay Roofing Tiles
28	37	42	37 (R)	76	Exports	
25	31	493	61	29	Imports	Clay Pipes
908	705	921	905	1,001	Exports	
937	1,387	1,240	1,414 (R)	1,306	Imports	Other Clay Products
677	856	697	669	480	Exports	
1,676	2,080 (R)	1,979	2,315 (R)	2,023	Imports	Concrete Blocks & Bricks
2,098	2,476 (R)	2,100 (R)	1,931 (R)	1,301	Exports	
..	..	..	..	..	Imports	Concrete Roofing Tiles*
..	..	..	..	..	Exports	
..	..	..	..	..	Imports	Other Concrete Tiles & Paving*
..	..	..	..	..	Exports	
4,959	4,230	5,148	5,014 (R)	3,724	Imports	Concrete Tiles and Pavings*
2,761	2,503 (R)	3,667 (R)	3,464 (R)	2,220	Exports	
3,951	5,469	4,013	5,840 (R)	7,676	Imports	Prefabricated Concrete Products
801	1,123 (R)	798 (R)	1,004 (R)	1,153	Exports	
14,212	13,631	13,043	13,269 (R)	11,680	Imports	Concrete Pipes
7,374	6,455	6,098	5,917 (R)	6,703	Exports	

\* Due to changes to in European Commission product classifications Slate Roofing Tiles and Other Slate Products have been combined. Similarly, Concrete Roofing Tiles and Other Concrete Tiles and Pavings have been combined.

# EXTERNAL TRADE

**Table 14 : Value of Overseas Trade in Selected Materials and Components for Constructional Use : Imports (cif) & Exports (fob)**

United Kingdom		Current Prices (£'000)					
		2007	2008	2009	2010	2011	2012
<b>Products &amp; Components (continued)</b>							
Structural Units (steel)	Imports	526,140	564,645	470,772	604,136	648,018	324,610
	Exports	498,331	604,520	505,127	486,891	472,789	165,219
Structural Units (aluminium)	Imports	220,258	251,909	292,334	178,196	235,864	229,036
	Exports	81,777	98,289	71,158	54,971	61,224	61,171
Steel Tubes & Hollow Sections	Imports	142,420	157,616	108,794	130,955	154,120	161,823
	Exports	114,756	132,537	82,990	108,503	128,588	107,540
Bituminous Roofing Felt*	Imports	25,627	30,853	35,139	39,835	..	..
	Exports	5,406	3,507	3,392	2,744	..	..
Other Asphalt products*	Imports	9,966	9,999	9,987	10,750	..	..
	Exports	16,768	18,030	19,595	14,474	..	..
Asphalt Products*	Imports	..	..	..	..	54,421	57,278
	Exports	..	..	..	..	18,070	15,163
Mineral Insulating Materials	Imports	81,851	78,961	74,096	81,060	83,477	86,946
	Exports	139,360	132,697	106,865	146,430	164,857	166,577
Glass Fibre**	Imports	1,482	1,185	552	381	602	..
	Exports	1,188	2,829	1,220	1,075	2,669	..
Fibre Cement Products	Imports	31,344	28,053	28,663	31,019	35,084	37,203
	Exports	6,668	7,680	4,847	5,849	9,199	9,134
Building Plasters <sup>1</sup>	Imports	6,172	6,868	8,845	..	..	..
	Exports	7,622	8,077	7,475	..	..	..
Plasters <sup>1</sup>	Imports	..	..	..	13,820	11,656	11,620
	Exports	..	..	..	7,905	9,168	9,201
Plasterboard	Imports	30,302	16,057	13,683	15,007	18,972	15,534
	Exports	19,798	18,397	16,505	12,912	12,522	12,648
Copper Pipes	Imports	217,861	245,212	182,487	241,116	228,049	208,289
	Exports	153,412	171,581	116,520	146,447	142,770	118,313
Lead Pipes & Fittings**	Imports	93	18	509	148	..	..
	Exports	48	626	209	243	..	..
Zinc Pipes & Fittings*	Imports	1,154	918	494	757	..	..
	Exports	7,166	6,016	4,388	914	..	..
Other Zinc Building Products*	Imports	12,447	13,117	10,409	13,000	..	..
	Exports	20,946	22,026	22,639	26,529	..	..
Zinc Building Products*	Imports	..	..	..	..	12,933	14,433
	Exports	..	..	..	..	12,933	35,399
Plastic Pipes	Imports	114,727	133,929	117,126	105,667	114,260	108,141
	Exports	205,332	211,718	202,745	149,389	156,648	163,459
Other Plastic Building Products	Imports	148,828	149,235	138,250	148,270	157,129	152,711
	Exports	115,008	117,407	96,902	110,278	129,742	104,719
Builders Ironmongery	Imports	498,373	505,665	278,144	312,316	314,993	337,508
	Exports	157,424	165,476	94,402	112,191	128,039	122,744
Nails & Screws	Imports	59,853	61,080	48,123	66,865	64,896	61,121
	Exports	12,553	12,851	8,281	8,949	11,186	7,495
Mastics, Putty	Imports	148,599	151,898	132,061	143,430	151,902	164,492
	Exports	103,998	119,256	110,080	115,349	139,748	128,067
Paints & Varnishes	Imports	339,581	356,451	345,977	376,374	403,309	419,083
	Exports	442,126	551,564	503,518	552,294	622,468	629,765

<sup>1</sup> From Q1 2010 onwards the Plasters category will contain Building Plaster and Other Plasters as Building Plasters data is no longer collected

## EXTERNAL TRADE

Current Prices (£'000)

2011 Q4	2012 Q1	Q2	Q3	Q4	Products & Components (continued)	
139,330	57,282 (R)	75,963 (R)	114,189 (R)	77,176	Imports	Structural Units (steel)
106,007	40,915	41,106	43,295 (R)	39,903	Exports	
71,461	61,219	62,410 (R)	53,693 (R)	51,714	Imports	Structural Units (aluminium)
15,643	13,111 (R)	13,321	17,643 (R)	17,096	Exports	
33,844	44,549 (R)	44,635	39,963 (R)	32,676	Imports	Steel Tubes & Hollow Sections
27,965	31,621	30,663	23,334 (R)	21,922	Exports	
..	..	..	..	..	Imports	Bituminous Roofing Felt*
..	..	..	..	..	Exports	
..	..	..	..	..	Imports	Other Asphalt products*
..	..	..	..	..	Exports	
14,139	14,392	13,171	15,669 (R)	14,046	Imports	Asphalt Products*
5,320	5,244	3,159	3,814 (R)	2,946	Exports	
21,343	20,031 (R)	21,894	23,030 (R)	21,991	Imports	Mineral Insulating Materials
39,662	43,954 (R)	43,223 (R)	41,823 (R)	37,577	Exports	
139	..	..	..	..	Imports	Glass Fibre**
547	..	..	..	..	Exports	
8,798	9,242	8,261	10,423 (R)	9,277	Imports	Fibre Cement Products
2,312	2,210	2,338	2,311	2,275	Exports	
..	..	..	..	..	Imports	Building Plasters1
..	..	..	..	..	Exports	
2,639	3,187	3,261	2,869 (R)	2,303	Imports	Plasters1
2,082	2,316	2,305	2,259	2,321	Exports	
4,015	5,221	3,883	3,672 (R)	2,758	Imports	Plasterboard
2,837	3,220	3,132	3,378	2,918	Exports	
51,882	58,090	54,153 (R)	52,483 (R)	43,563	Imports	Copper Pipes
33,697	30,854	31,084 (R)	27,592 (R)	28,783	Exports	
..	..	..	..	..	Imports	Lead Pipes & Fittings**
..	..	..	..	..	Exports	
..	..	..	..	..	Imports	Zinc Pipes & Fittings*
..	..	..	..	..	Exports	
..	..	..	..	..	Imports	Other Zinc Building Products*
..	..	..	..	..	Exports	
3,239	3,467	3,332 (R)	4,919 (R)	2,715	Imports	Zinc Building Products*
5,692	7,515	8,157 (R)	13,196 (R)	6,531	Exports	
24,698	27,269 (R)	29,024 (R)	27,782 (R)	24,066	Imports	Plastic Pipes
37,902	37,603	48,687 (R)	44,910 (R)	32,259	Exports	
37,909	40,405 (R)	37,847 (R)	38,745 (R)	35,714	Imports	Other Plastic Building Products
29,953	28,289	25,837 (R)	25,669 (R)	24,924	Exports	
79,424	84,335 (R)	90,550 (R)	87,701 (R)	74,922	Imports	Builders Ironmongery
28,937	31,548 (R)	31,241	30,947 (R)	29,008	Exports	
15,861	17,394 (R)	14,456 (R)	14,935 (R)	14,336	Imports	Nails & Screws
2,517	2,156	1,795	1,788 (R)	1,756	Exports	
37,017	40,445 (R)	40,796 (R)	43,445 (R)	39,806	Imports	Mastics, Putty
34,282	32,571	31,799 (R)	33,335 (R)	30,362	Exports	
93,726	108,632 (R)	106,254 (R)	108,583 (R)	95,614	Imports	Paints & Varnishes
147,438	165,180	160,398 (R)	156,825 (R)	147,362	Exports	

\* Due to changes to in European Commission product classifications Bituminous Roofing Felt and Other Asphalt products have been combined. Similarly, Zinc Pipes & Fittings and Other Zinc Building Products have been combined.

\*\* Data for Lead Pipes and Fittings and Glass Fibre are no longer collected.

# EXTERNAL TRADE

**Table 14 : Value of Overseas Trade in Selected Materials and Components  
for Constructional Use : Imports (cif) & Exports (fob)**

United Kingdom		Current Prices (£'000)					
		2007	2008	2009	2010	2011	2012
<b>Products &amp; Components (continued)</b>							
Unglazed Ceramic Tiles	Imports	64,691	71,099	62,181	56,551	63,864	62,403
	Exports	4,420	3,607	2,424	2,829	2,817	3,473
Glazed Ceramic Tiles	Imports	290,867	279,656	256,303	224,557	212,986	209,892
	Exports	20,554	17,706	15,671	15,455	18,784	17,615
Ceramic Sanitaryware	Imports	181,603	174,194	159,123	168,666	178,028	177,753
	Exports	58,229	53,471	37,635	37,883	37,259	32,168
Plastic Sanitaryware	Imports	126,472	120,004	114,695	112,513	109,817	107,190
	Exports	78,811	83,908	79,444	67,886	62,582	51,550
Metal Sanitaryware	Imports	139,820	143,118	111,737	124,666	136,536	121,645
	Exports	33,511	33,167	31,969	28,274	32,644	38,535
Flat Glass	Imports	71,800	61,061	53,819	61,048	64,992	65,147
	Exports	83,174	107,783	60,380	73,175	109,162	79,461
Other Glass Products	Imports	76,235	98,993	82,857	81,083	85,002	82,829
	Exports	37,712	40,296	34,188	33,081	32,612	32,277
Wood Veneers	Imports	38,516	39,407	26,102	31,681	36,202	33,535
	Exports	10,243	10,034	5,747	5,824	7,593	7,340
Wood Mouldings	Imports	73,907	64,579	55,648	66,802	59,139	58,451
	Exports	18,289	11,169	8,861	9,660	8,977	8,204
Wood Block Flooring	Imports	125,111	125,242	112,661	144,394	139,916	150,540
	Exports	5,465	6,136	5,746	4,535	4,540	4,801
Other Builder's Woodwork	Imports	109,023	101,242	80,645	99,394	89,758	89,077
	Exports	19,079	15,908	14,395	14,319	16,308	13,669
Windows (wood)	Imports	84,257	121,171	110,061	111,934	118,893	112,375
	Exports	12,880	10,219	10,721	7,786	9,885	8,571
Doors (wood)	Imports	205,158	209,133	184,609	217,810	202,006	189,598
	Exports	37,008	26,929	19,395	16,873	13,323	15,807
Doors & Windows (steel)	Imports	40,294	39,652	39,726	35,987	35,431	37,505
	Exports	25,824	26,300	20,643	19,222	18,996	23,954
Doors & Windows (aluminium)	Imports	65,655	63,705	64,279	72,365	70,526	71,549
	Exports	32,687	25,473	24,410	19,950	24,141	18,529
Doors & Windows (plastic)	Imports	39,459	39,377	43,885	46,337	52,738	56,368
	Exports	63,218	56,119	41,193	44,433	39,423	30,131
Cork Tiles	Imports	2,877	2,258	1,779	2,951	4,018	2,999
	Exports	1,611	1,641	1,702	1,646	2,139	1,835
Linoleum Floor Coverings	Imports	242,787	256,585	244,149	279,065	317,850	306,754
	Exports	195,735	224,522	213,628	228,832	233,662	213,765
Wallpaper	Imports	58,962	58,636	54,487	56,701	58,370	58,938
	Exports	67,165	73,506	66,782	82,940	85,873	76,100
Textile Wall Coverings	Imports	1,572	2,833	2,346	3,323	3,007	3,306
	Exports	598	500	357	609	688	623

# EXTERNAL TRADE

Current Prices (£'000)

2011 Q4	2012 Q1	Q2	Q3	Q4		
<b>Products &amp; Components (continued)</b>						
15,709 665	16,394 1,001	16,494 942	15,225 (R) 1,020	14,290 510	Imports Exports	Unglazed Ceramic Tiles
49,270 5,242	51,741 (R) 4,013	60,652 (R) 5,132	52,331 (R) 4,278	45,168 4,192	Imports Exports	Glazed Ceramic Tiles
43,520 7,875	46,429 7,626	45,661 8,521	44,690 (R) 8,684 (R)	40,973 7,337	Imports Exports	Ceramic Sanitaryware
28,358 14,100	27,572 (R) 13,297 (R)	27,466 (R) 13,190 (R)	27,570 (R) 13,420 (R)	24,582 11,643	Imports Exports	Plastic Sanitaryware
31,706 7,562	31,168 (R) 8,348	31,706 8,709	30,368 (R) 9,889 (R)	28,403 11,589	Imports Exports	Metal Sanitaryware
16,929 31,878	15,749 28,048	16,076 (R) 19,601	17,536 (R) 15,269	15,786 16,543	Imports Exports	Flat Glass
20,626 6,982	21,273 (R) 8,194	22,263 (R) 7,818	21,669 (R) 8,868 (R)	17,624 7,397	Imports Exports	Other Glass Products
8,750 1,721	8,580 (R) 2,091	7,934 2,104	8,799 (R) 1,759	8,222 1,386	Imports Exports	Wood Veneers
11,479 1,784	15,066 2,076	16,827 2,018	13,866 (R) 2,272	12,692 1,838	Imports Exports	Wood Mouldings
35,612 1,359	32,887 (R) 1,178	40,819 (R) 1,138	42,640 (R) 1,272	34,194 1,213	Imports Exports	Wood Block Flooring
20,928 4,030	22,474 4,097	23,556 3,443	21,769 (R) 2,509	21,278 3,620	Imports Exports	Other Builder's Woodwork
30,829 1,959	29,607 1,730	27,356 2,026	27,498 (R) 2,420	27,914 2,395	Imports Exports	Windows (wood)
45,427 3,042	45,267 3,299	47,536 3,867	50,288 (R) 4,751 (R)	46,507 3,890	Imports Exports	Doors (wood)
8,585 5,329	9,494 4,892	10,778 5,982	8,931 (R) 6,439 (R)	8,302 6,641	Imports Exports	Doors & Windows (steel)
17,640 7,647	18,854 5,003	18,145 (R) 5,227	17,105 (R) 4,489 (R)	17,445 3,810	Imports Exports	Doors & Windows (aluminium)
12,861 9,064	13,884 7,149	16,319 (R) 7,789	14,874 (R) 7,537 (R)	11,291 7,656	Imports Exports	Doors & Windows (plastic)
797 285	731 581	754 434	650 476	864 344	Imports Exports	Cork Tiles
77,721 54,030	78,949 (R) 53,983 (R)	78,746 (R) 54,720	75,587 (R) 56,415 (R)	73,472 48,647	Imports Exports	Linoleum Floor Coverings
15,261 19,333	13,958 17,335	14,754 18,231	13,427 (R) 20,558 (R)	16,799 19,976	Imports Exports	Wallpaper
763 262	861 101	772 221	786 158 (R)	887 143	Imports Exports	Textile Wall Coverings

# EXTERNAL TRADE

**Table 14 : Value of Overseas Trade in Selected Materials and Components  
for Constructional Use : Imports (cif) & Exports (fob)**

United Kingdom		Current Prices (£'000)					
		2007	2008	2009	2010	2011	2012
<b>Products &amp; Components (continued)</b>							
Fitted Kitchens (assembled)	Imports	144,017	171,688	130,058	111,345	80,006	79,316
	Exports	35,322	24,163	17,307	16,122	15,729	19,679
Prefabricated Buildings (wood)	Imports	49,086	40,341	34,264	32,687	34,909	30,817
	Exports	27,807	15,170	13,234	10,546	8,391	10,185
Prefabricated Buildings (steel)	Imports	30,083	50,546	46,291	29,783	37,366	26,665
	Exports	27,464	46,140	48,512	37,158	50,070	58,250
Prefabricated Buildings (other)	Imports	73,414	74,165	44,887	34,323	29,862	36,418
	Exports	35,795	72,310	28,104	17,643	19,082	27,935
Mobile Homes	Imports	7,113	6,574	5,065	2,165	1,430	2,188
	Exports	11,291	7,250	7,750	3,666	2,427	7,496
Taps & Valves	Imports	277,804	315,427	269,199	322,207	334,356	338,911
	Exports	72,708	60,597	64,447	73,202	69,125	88,130
Pumps (circulating)	Imports	24,274	21,754	19,900	21,878	22,061	27,733
	Exports	27,131	27,964	23,603	32,078	22,154	12,655
Central Heating Boilers	Imports	493,841	547,726	566,588	554,452	572,298	523,606
	Exports	70,581	80,756	91,053	74,832	77,852	71,828
Radiators	Imports	197,513	184,218	175,518	189,792	178,677	172,647
	Exports	46,937	57,884	34,303	31,085	28,270	36,631
Water Heaters	Imports	88,897	105,755	105,711	84,627	90,676	87,657
	Exports	64,471	84,810	64,883	63,036	67,672	59,327
Space Heaters	Imports	107,581	110,403	114,047	136,729	148,616	99,725
	Exports	37,313	35,118	32,068	32,001	32,926	23,269
Fan Systems	Imports	198,750	161,772	127,327	172,161	190,441	178,069
	Exports	94,651	114,006	107,846	109,339	124,299	137,866
Air Conditioning Equipment	Imports	514,454	644,353	462,588	527,857	576,155	521,352
	Exports	231,144	268,134	240,594	270,112	262,557	254,526
Air Purifying Equipment	Imports	29,828	41,389	50,854	53,220	66,549	70,937
	Exports	120,706	138,002	102,158	148,638	183,241	194,213
Hand Driers	Imports	4,057	7,634	7,443	8,987	10,496	10,346
	Exports	1,648	1,017	1,247	1,905	1,950	1,759
Meters	Imports	24,502	24,155	24,237	28,701	44,041	62,079
	Exports	26,216	47,988	42,969	52,825	72,518	75,045
Plugs & Sockets	Imports	231,664	269,479	257,049	303,121	329,210	338,251
	Exports	148,672	153,173	137,529	182,364	214,654	214,996
Electrical Wires	Imports	1,303,905	1,236,486	909,830	1,213,470	1,346,886	1,373,218
	Exports	521,508	554,723	425,815	515,544	571,975	509,186
Electrical Insulators	Imports	30,477	34,957	29,102	30,596	26,548	33,788
	Exports	33,830	32,548	26,983	32,574	30,485	28,454
Lamps & Fittings	Imports	449,230	462,930	424,435	515,852	520,951	596,290
	Exports	221,180	236,971	223,741	216,816	266,980	286,281
Fire & Security Alarms	Imports	144,891	139,973	136,550	151,642	122,662	141,721
	Exports	154,520	182,447	238,608	208,281	173,480	182,007
Lifts & Escalators	Imports	118,401	129,307	115,017	96,973	102,832	117,141
	Exports	43,142	28,699	19,697	14,628	21,220	21,703

## EXTERNAL TRADE

Current Prices (£'000)

2011 Q4	2012 Q1	Q2	Q3	Q4	Products & Components (continued)	
18,426	19,510	20,919	19,506 (R)	19,381	Imports	Fitted Kitchens (assembled)
3,974	3,660	3,069	7,333 (R)	5,617	Exports	
6,301	7,676	6,689	10,500	5,952	Imports	Prefabricated Buildings (wood)
1,898	1,897	1,764	3,177	3,347	Exports	
8,941	6,864	8,037	8,223	3,541	Imports	Prefabricated Buildings (steel)
15,989	7,766	11,446	13,889 (R)	25,149	Exports	
5,665	12,185	11,254	7,868 (R)	5,111	Imports	Prefabricated Buildings (other)
4,907	12,226	5,068	4,009 (R)	6,632	Exports	
240	675	922	463	128	Imports	Mobile Homes
562	1,865	2,084	2,134	1,413	Exports	
85,927	84,773	85,716 (R)	91,787 (R)	76,635	Imports	Taps & Valves
17,855	21,077	21,176 (R)	20,075	25,802	Exports	
5,699	7,137	5,641	6,585 (R)	8,370	Imports	Pumps (circulating)
7,358	3,669	2,115	3,132	3,739	Exports	
152,273	120,908	112,756 (R)	122,100 (R)	167,842	Imports	Central Heating Boilers
22,716	14,548	18,191	17,016 (R)	22,073	Exports	
44,651	45,269 (R)	41,254	42,552 (R)	43,572	Imports	Radiators
8,835	9,634	8,860	8,904 (R)	9,233	Exports	
24,130	21,394 (R)	20,549 (R)	23,270 (R)	22,444	Imports	Water Heaters
15,291	16,982 (R)	15,740 (R)	13,390 (R)	13,215	Exports	
52,480	22,570 (R)	15,401	28,000 (R)	33,754	Imports	Space Heaters
9,964	5,134	4,306 (R)	5,532 (R)	8,297	Exports	
45,658	48,044 (R)	48,296 (R)	40,900 (R)	40,829	Imports	Fan Systems
32,809	34,411	34,391 (R)	35,040 (R)	34,024	Exports	
119,306	129,207 (R)	138,834 (R)	135,763 (R)	117,548	Imports	Air Conditioning Equipment
60,006	58,048 (R)	73,500	63,983 (R)	58,995	Exports	
16,001	15,880 (R)	21,480 (R)	15,935 (R)	17,642	Imports	Air Purifying Equipment
42,903	45,052 (R)	51,095 (R)	49,823 (R)	48,243	Exports	
3,065	2,645	2,575	2,562 (R)	2,564	Imports	Hand Driers
493	510	292	501	456	Exports	
15,242	16,565	14,237	14,600	16,677	Imports	Meters
17,349	21,908	20,252	15,180	17,705	Exports	
77,852	79,120 (R)	82,777 (R)	85,083 (R)	91,271	Imports	Plugs & Sockets
49,764	54,683	53,495 (R)	54,253 (R)	52,565	Exports	
355,658	366,539 (R)	359,177 (R)	336,287 (R)	311,215	Imports	Electrical Wires
146,797	139,328 (R)	125,651 (R)	120,064 (R)	124,143	Exports	
5,435	7,709 (R)	9,375 (R)	9,167 (R)	7,537	Imports	Electrical Insulators
7,791	7,312 (R)	6,640 (R)	7,678 (R)	6,824	Exports	
135,139	140,084 (R)	141,959 (R)	155,934 (R)	158,313	Imports	Lamps & Fittings
73,689	68,118 (R)	68,930 (R)	72,453 (R)	76,780	Exports	
30,362	34,645 (R)	33,745 (R)	35,170 (R)	38,161	Imports	Fire & Security Alarms
41,768	45,229 (R)	43,278 (R)	47,455 (R)	46,045	Exports	
23,502	24,372	30,060	33,090 (R)	29,619	Imports	Lifts & Escalators
5,276	3,440	6,204 (R)	7,821 (R)	4,238	Exports	

© Crown copyright 2013

Published under licence from the Controller of Her Majesty's Stationery Office.

Applications for reproductions should be made in writing to :-

The Copyright Unit, Her Majesty's Stationery Office, St. Clements House,  
2-16 Colegate, Norwich NR3 1BQ

April 2013

URN BIS / 13 / 313d

ISSN 0264-6188