

Annex 3 to the Green Deal Guidance for the Property Industry in Great Britain: Map A – One-off payments

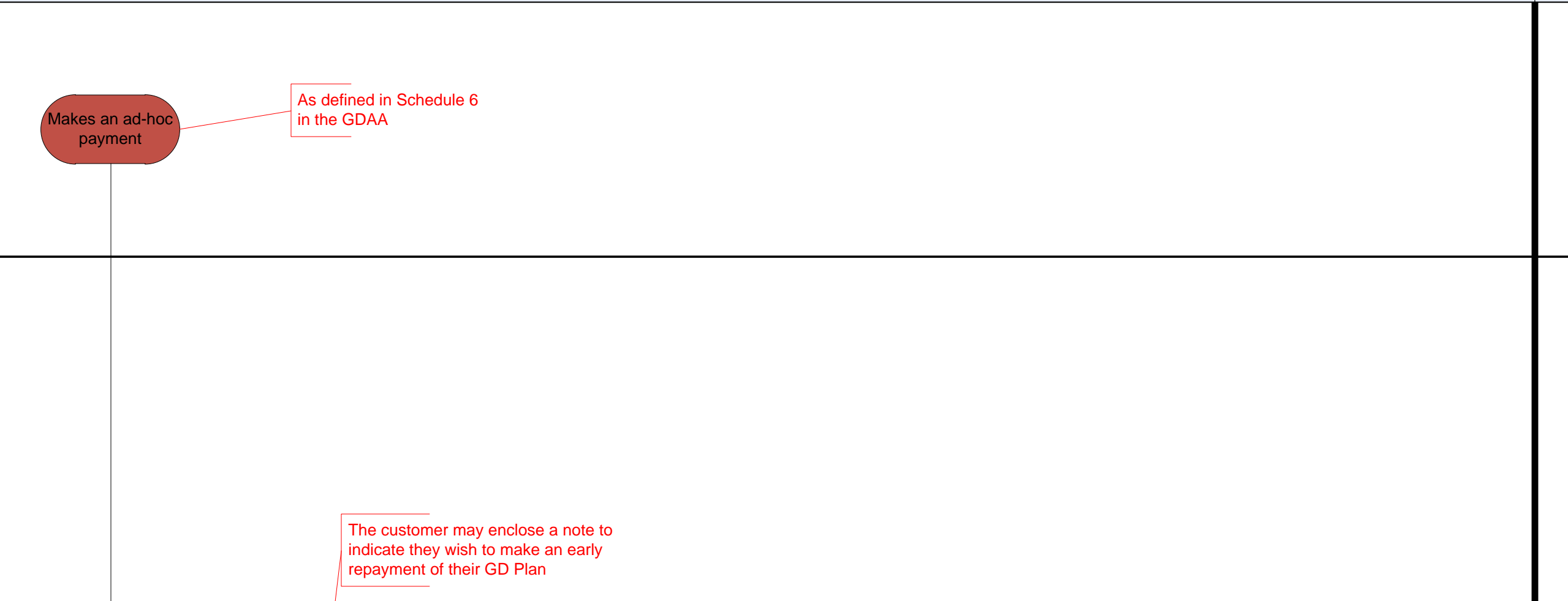
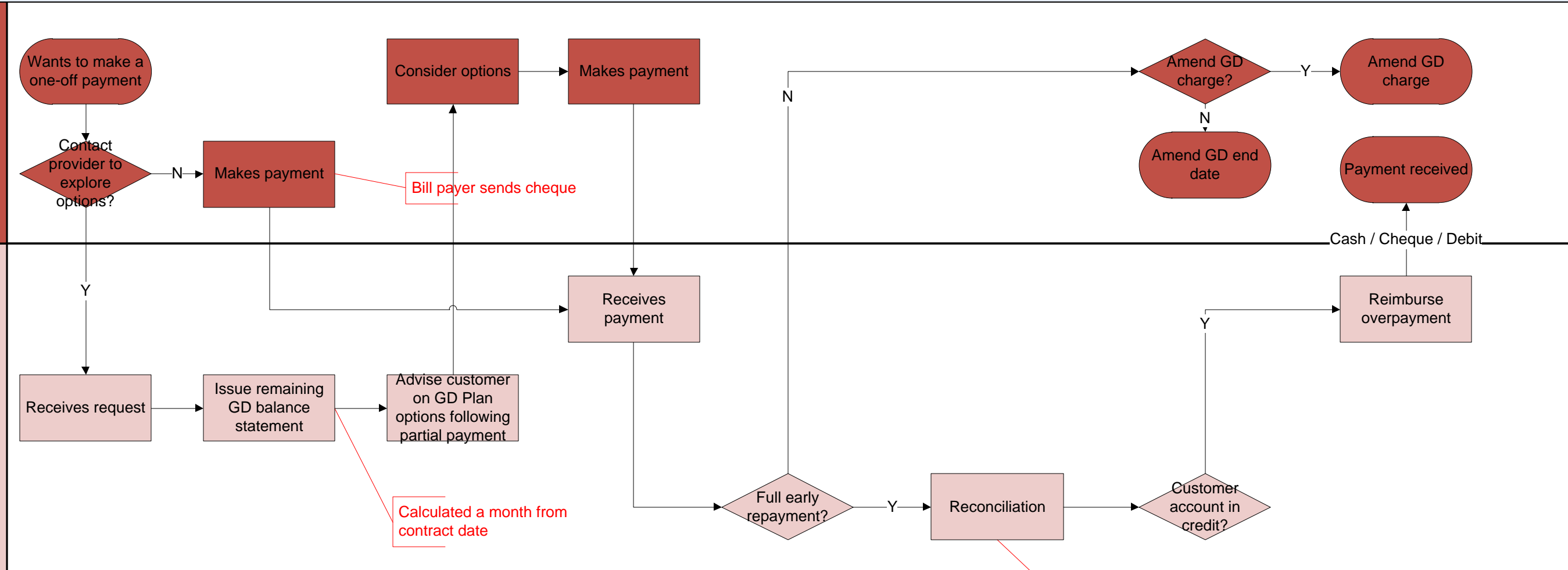
One-off payment to the provider

Ad-hoc payments to supplier

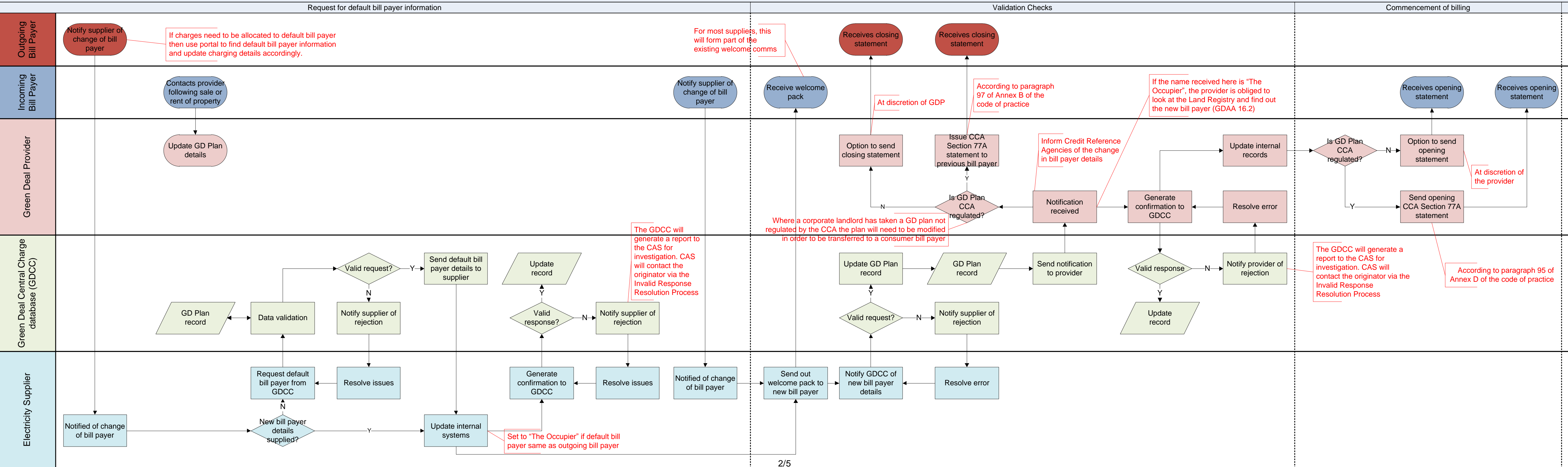
Bill Payer

Green Deal Provider

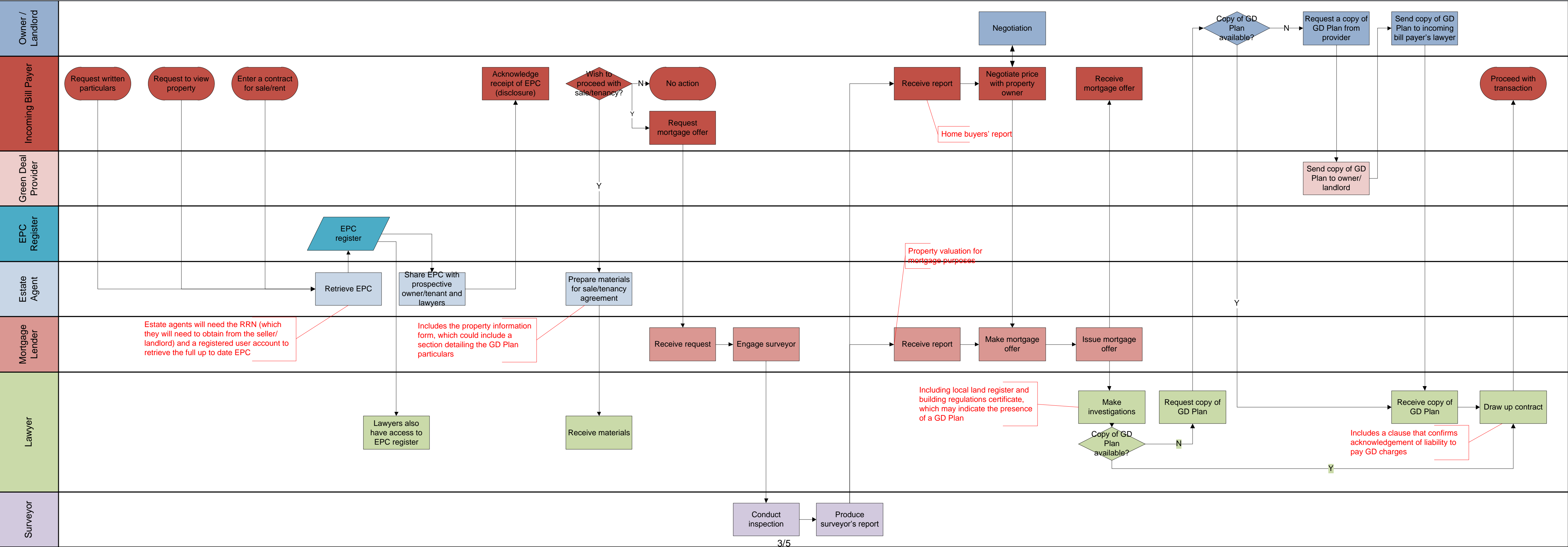
Electricity Supplier



Annex 3 to the Green Deal Guidance for the Property Industry in Great Britain: Map B – Change of bill payer

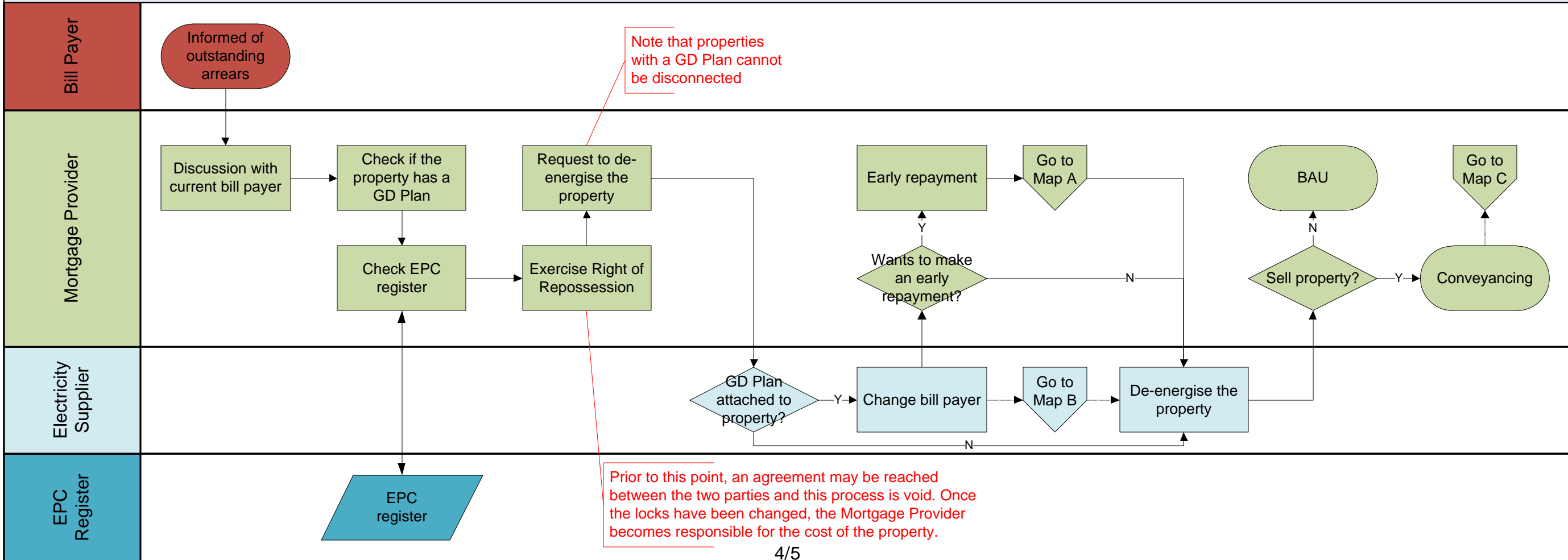


Annex 3 to the Green Deal Guidance for the Property Industry in Great Britain: Map C – Sale of a property with a GD Plan



Annex 3 to the Green Deal Guidance for the Property Industry in Great Britain: Map D – Repossession

Disconnection is the permanent removal of the electricity supply point and associated meter. This differs from de-energisation where the electricity supply is temporarily disconnected, usually by the removal of the main fuse.



Annex 3 to the Green Deal Guidance for the Property Industry in Great Britain: Map E – Transfer of property other than through sale or rent

