

APPENDIX 12 – NATURA 2000 SITES

A12.a Introduction

Under the Habitats Directive, European Member States are required to afford protection for certain species and habitats through the designation of Special Areas of Conservation (SAC) and Special Protection Areas (SPA). Collectively these Special Areas are known as “Natura 2000” sites, “European Sites” or the Natura 2000 network.

Prior to licences being awarded in the 24th Round, an appropriate assessment (AA) (DTI 2007) was carried out to determine whether the licences to be issued would have any adverse effects on the integrity of coastal, marine and offshore Natura 2000 sites in the areas to be licensed (blocks in SEAs 1-6). This section provides information to support future screening for an AA that would be required prior to licensing of blocks offered in a 25th Round; this would include the offer of blocks in the SEA 7 area and the re-offer of blocks in SEA areas 1-6.

A12.b The Natura 2000 sites

The list of sites relevant to a 25th Round are grouped as follows (see also Figures A12.1 and A12.2):

- Coastal and Marine Natura 2000 sites (SPAs and SACs) along the east coast of Great Britain from Shetland to Kent
- Coastal and marine Natura 2000 sites (SPAs and SACs) along the west coast from Islay to Pembrokeshire
- Coastal and marine Natura 2000 sites (SPAs and SACs) along the coast of Northern Ireland
- Coastal and marine Natura 2000 sites (SPAs and SACs) along the west coast of Scotland and the Western Isles from North Rona and Sula Sgeir to Colonsay and Oronsay.
- Offshore Natura 2000 sites in the Central North Sea
- Offshore Natura 2000 sites in the Southern North Sea
- Offshore Natura 2000 sites at the Wyville Thomson Ridge and Darwin Mounds
- The Stanton Banks offshore Natura 2000 site

The sites together with their features of interest are summarised in Tables A12.1 - A12.5 together with more detailed location maps (Figures A12.3 to A12.13). GIS (Geographic Information Systems) digital boundary data and location information as well as site details were taken from the JNCC website (<http://www.jncc.gov.uk>).

Figure A12.1 – Map showing Special Areas of Conservation in relation to the SEA areas and blocks currently licensed

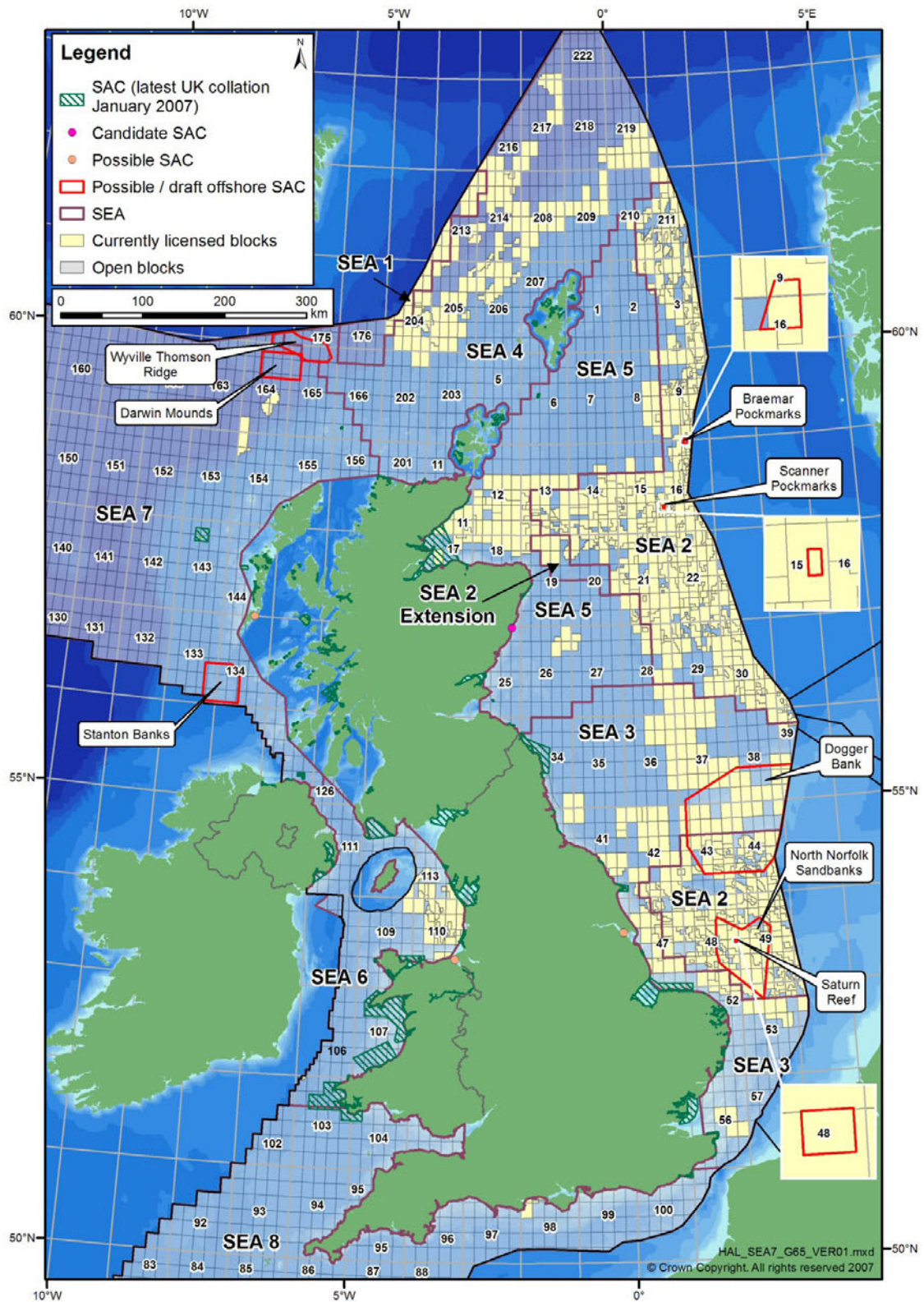
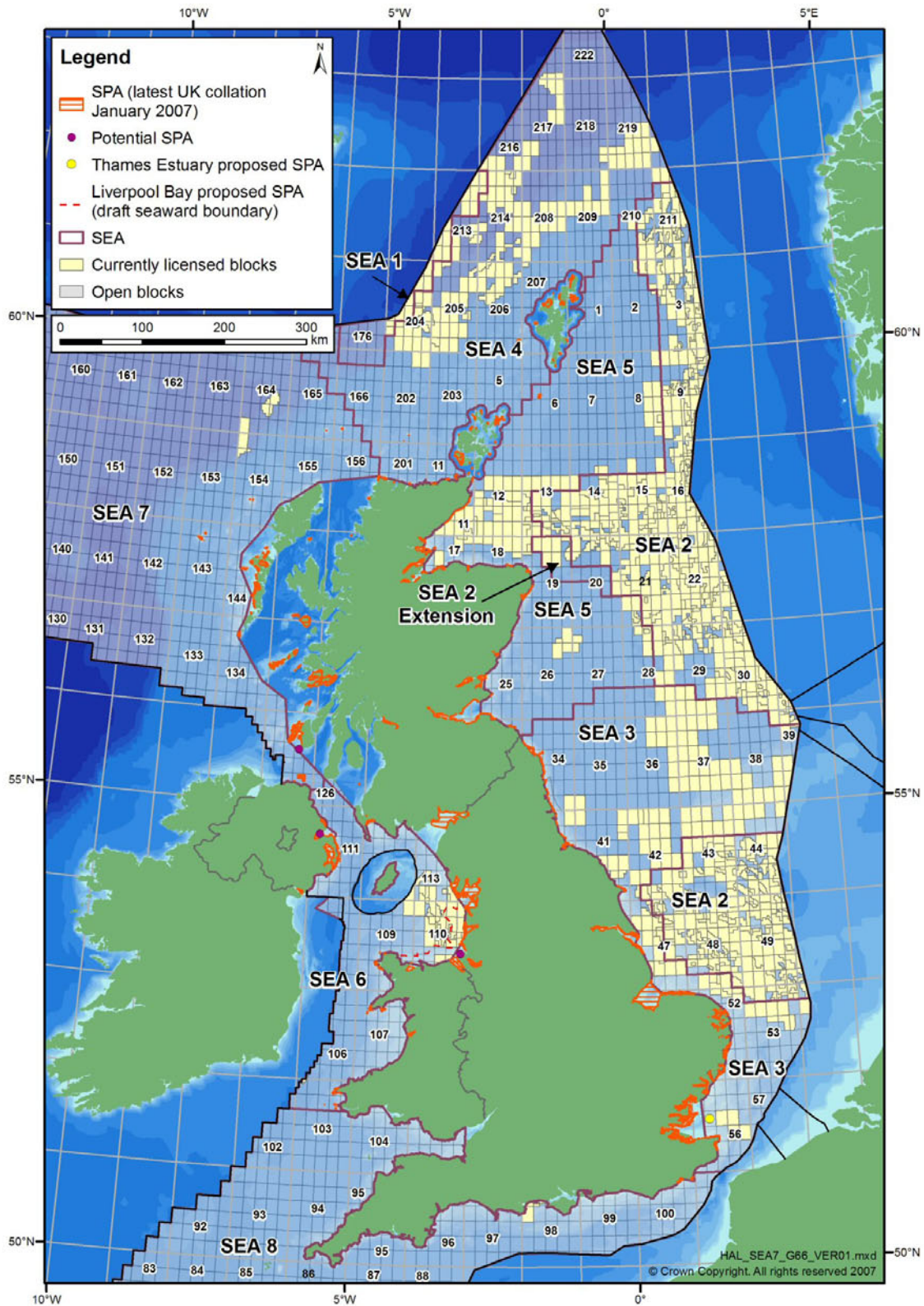


Figure A12.2 – Map showing Special Protection Areas in relation to the SEA areas and blocks currently licensed



A12.b.1 Coastal and Marine Special Protection Areas

Figure A12.3 – Location of SPAs – Shetland to the Tay

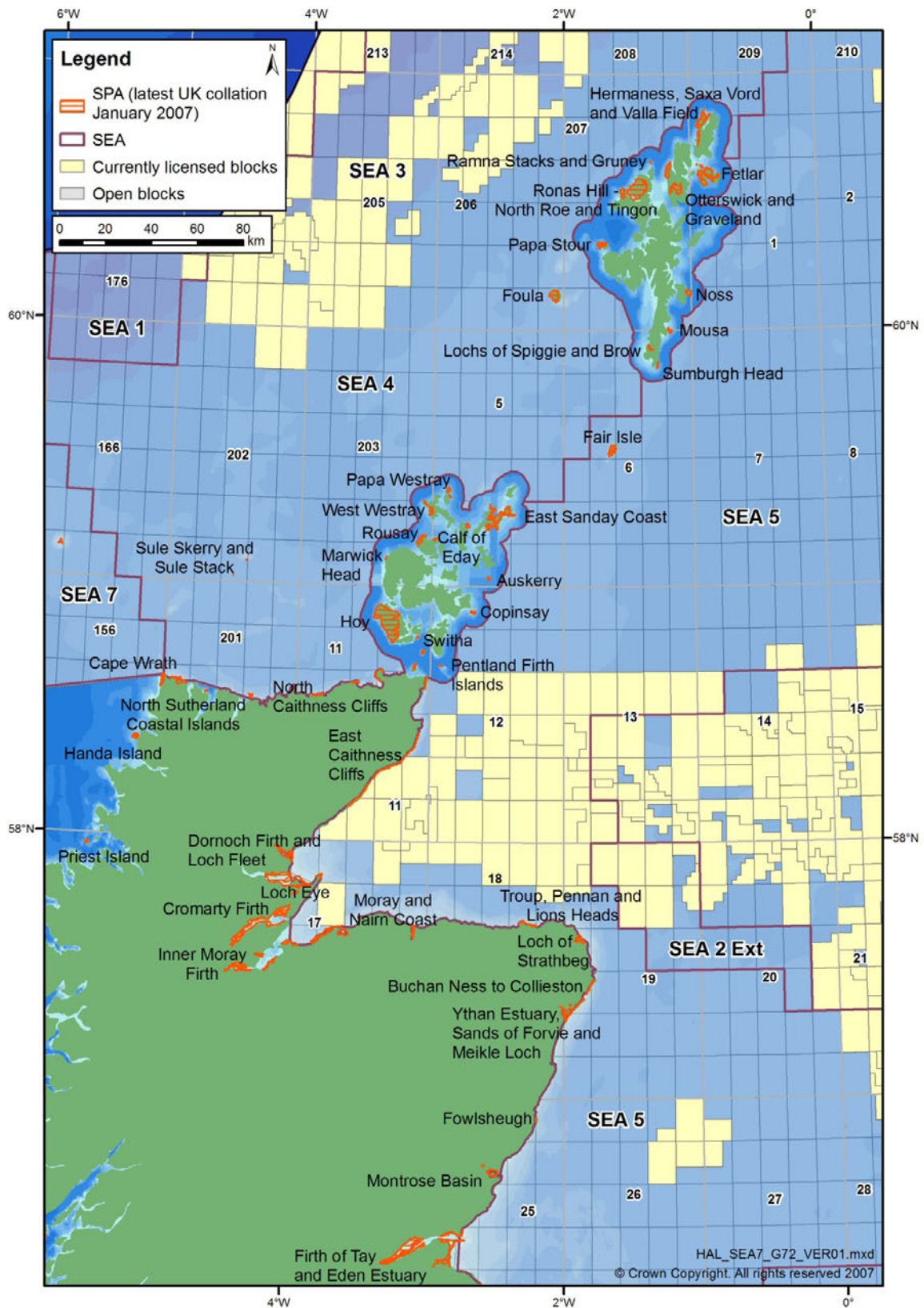


Figure A12.4 – Location of SPAs – Forth to Teesmouth and Islay to Pembrokeshire

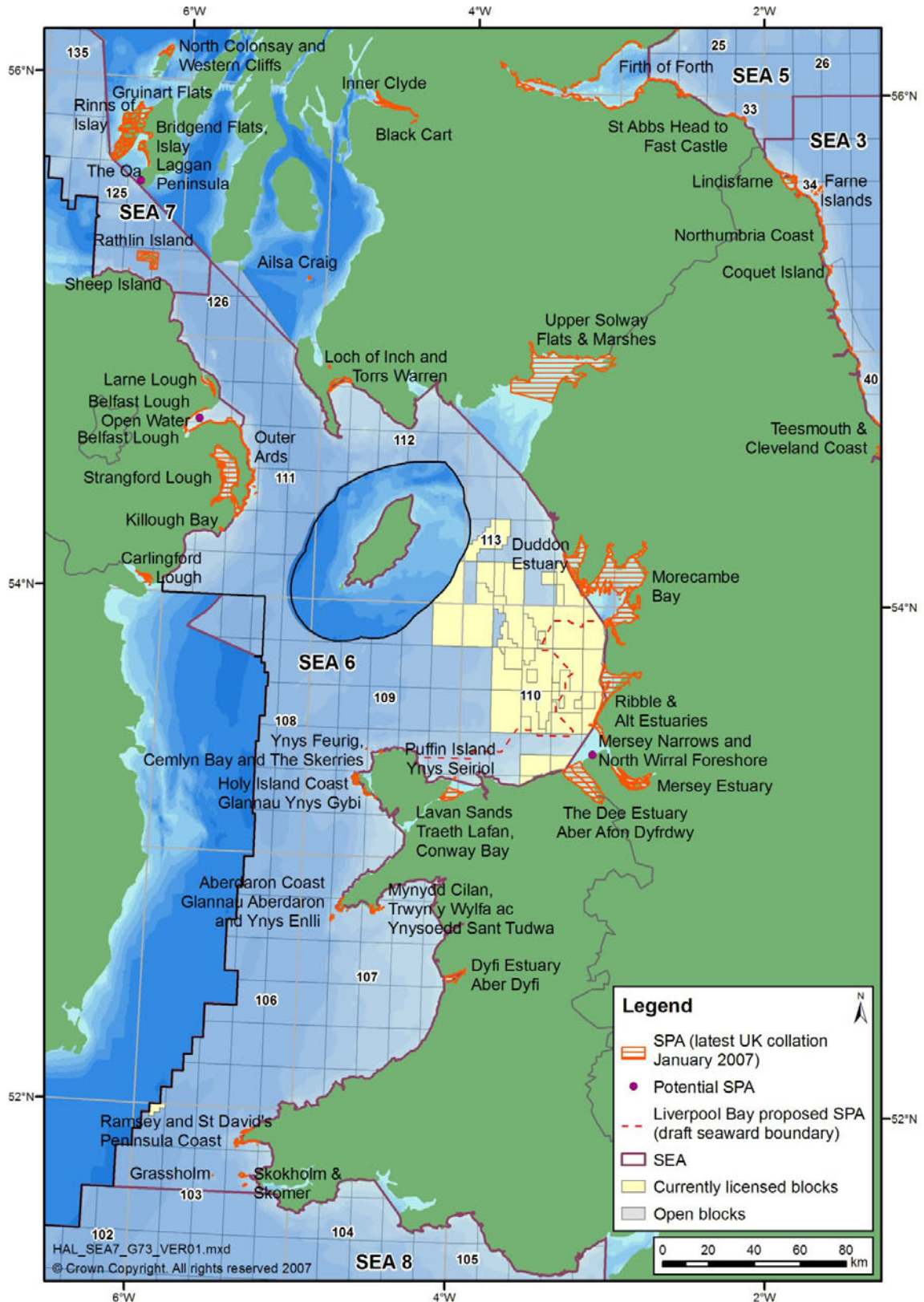


Figure A12.5 – Location of SPAs – Northumbria to Kent

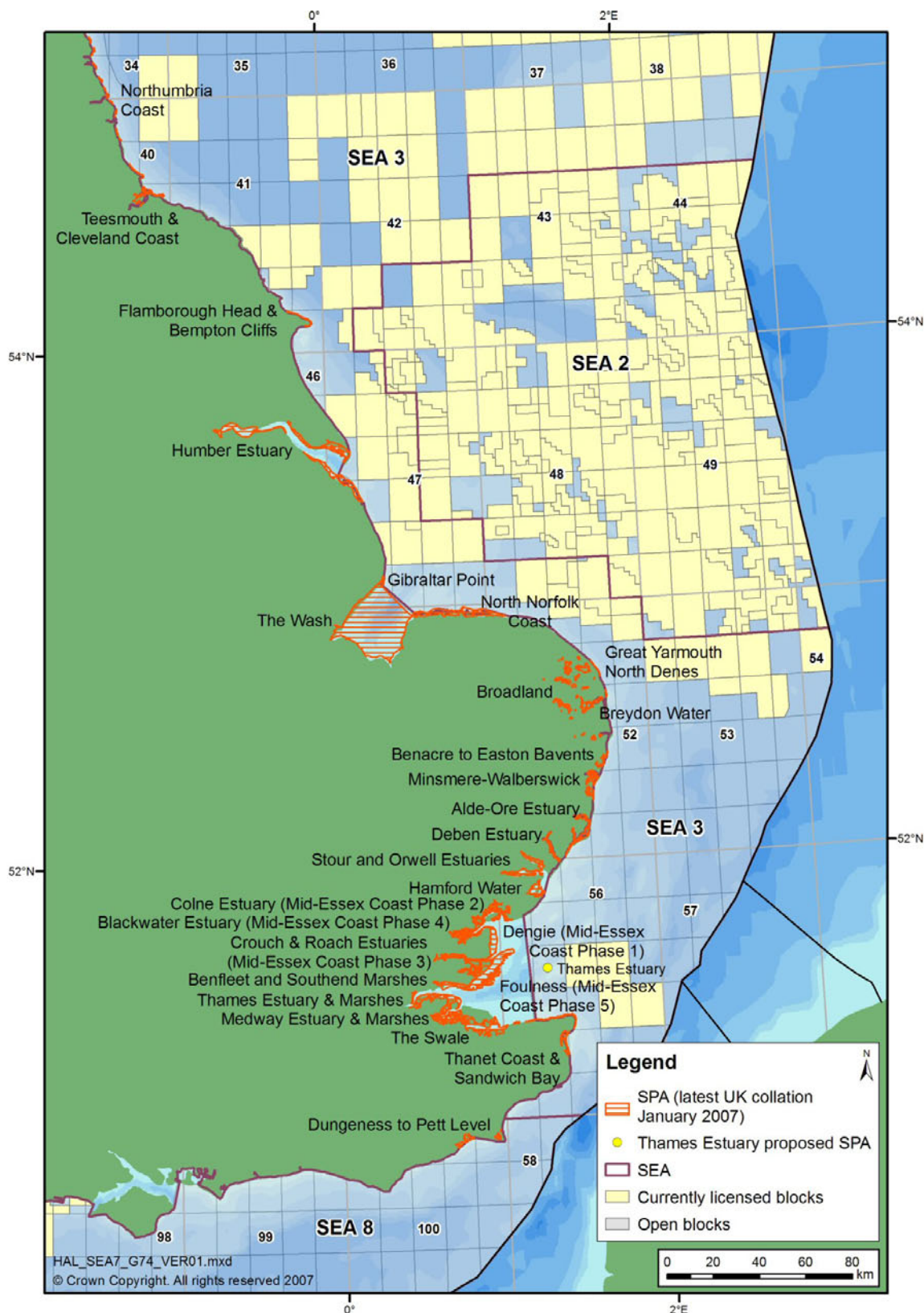


Figure A12.6 – Location of SPAs – North Rona and Sula Sgeir to Colonsay

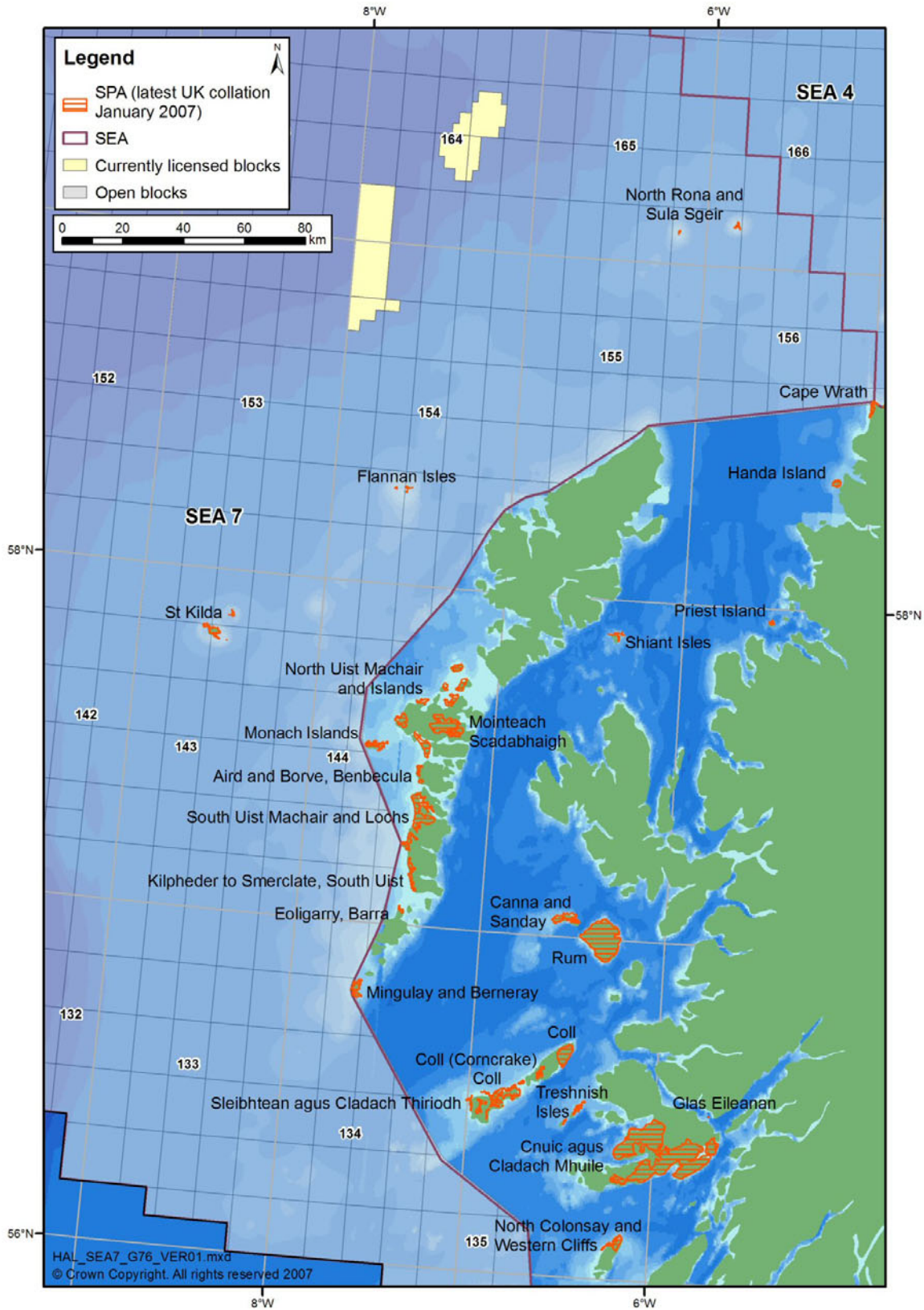


Table A12.1 – East Coast SPAs from Shetland to Kent and their Qualifying Features

Site Name	Area (ha)	Article 4.1 Species	Article 4.2 Migratory species	Article 4.2 Assemblages ¹
SHETLAND				
Sumburgh Head SPA	39.04	Breeding: Arctic tern <i>Sterna paradisaea</i>	N/A	Breeding: Seabirds
Lochs of Spiggie and Brow SPA	141.48	Over winter: Whooper swan <i>Cygnus cygnus</i>	N/A	N/A
Foula SPA	1323.31	Breeding: Arctic tern <i>Sterna paradisaea</i> Leach's Storm-petrel <i>Oceanodroma leucorhoa</i> Red-throated Diver <i>Gavia stellata</i>	Breeding: Great Skua <i>Catharacta skua</i> uillmot <i>Uria aalge</i> Puffin <i>Fratercula arctica</i> Shag <i>Phalacrocorax aristotelis</i>	Breeding: Seabirds
Papa Stour SPA	569.03	Breeding: Arctic tern <i>Sterna paradisaea</i>	Breeding: Ringed plover <i>Charadrius hiaticula</i>	N/A
Ronas Hill-North Roe and Tingon SPA	5470.2	Breeding: Merlin <i>Falco columbarius</i> Red-throated Diver <i>Gavia stellata</i>	N/A	N/A
Ramna Stacks and Gruney SPA	11.59	Breeding: Leach's storm-petrel <i>Oceanodroma leucorhoa</i>	N/A	N/A
Otterswick and Graveland SPA	2241.41	Breeding: Red-throated diver <i>Gavia stellata</i>	N/A	N/A
Hermaness, Saxa Vord and Valla Field SPA	1037.3	Breeding: Red-throated diver <i>Gavia stellata</i>	Breeding: Gannet <i>Morus bassanus</i> Great skua <i>Catharacta skua</i> Puffin <i>Fratercula arctica</i>	Breeding: Seabirds

¹ - A seabird assemblage of international importance. The area regularly supports at least 20,000 seabirds. Or

- A wetland of international importance. The area regularly supports at least 20,000 waterfowl.

Site Name	Area (ha)	Article 4.1 Species	Article 4.2 Migratory species	Article 4.2 Assemblages ¹
Fetlar SPA	2594.91	Breeding: Arctic tern <i>Sterna paradisaea</i> Red-necked Phalarope <i>Phalaropus lobatus</i>	Breeding: Dunlin <i>Calidris alpina schinzii</i> Great skua <i>Catharacta skua</i> Whimbrel <i>Numenius phaeopus</i>	Breeding: Seabirds
Noss SPA	343.82	N/A	Breeding: Gannet <i>Morus bassanus</i> Great skua <i>Catharacta skua</i> Guillemot <i>Uria aalge</i>	Breeding: Seabirds
Mousa SPA	197.98	Breeding: Arctic tern <i>Sterna paradisaea</i> Storm petrel <i>Hydrobates pelagicus</i>	N/A	N/A
Fair Isle SPA	561.27	Breeding: Arctic tern <i>Sterna paradisaea</i> Fair Isle wren <i>Troglodytes troglodytes fridariensis</i>	Breeding: Guillemot <i>Uria aalge</i>	Breeding: Seabird
ORKNEY				
Pentland Firth Islands SPA	170.51	Breeding: Arctic tern <i>Sterna paradisaea</i>	N/A	N/A
Switha SPA	57.39	Over winter: Barnacle goose <i>Branta leucopsis</i>	N/A	N/A
Hoy SPA	9499.7	Breeding: Peregrine <i>Falco peregrinus</i> Red-throated diver <i>Gavia stellata</i>	Breeding: Great skua <i>Catharacta skua</i>	Breeding: Seabirds
Marwick Head SPA	8.7	N/A	Breeding: Guillemot <i>Uria aalge</i>	Breeding: Seabirds
Rousay SPA	633.41	Breeding: Arctic tern <i>Sterna paradisaea</i>	N/A	Breeding: Seabirds
West Westray SPA	350.62	Breeding: Arctic tern <i>Sterna paradisaea</i>	Breeding: Guillemot <i>Uria aalge</i>	Breeding: Seabirds

Site Name	Area (ha)	Article 4.1 Species	Article 4.2 Migratory species	Article 4.2 Assemblages ¹
Papa Westray (North Hill and Holm) SPA	245.71	Breeding: Arctic tern <i>Sterna paradisaea</i>	Breeding: Arctic skua <i>Stercorarius parasiticus</i>	N/A
Calf of Eday SPA	238.03	N/A	N/A	Breeding: Seabirds
East Sanday Coast SPA	1515.23	Over winter: Bar-tailed godwit <i>Limosa lapponica</i>	Over winter: Purple sandpiper <i>Calidris maritima</i> Turnstone <i>Arenaria interpres</i>	N/A
Auskerry SPA	101.97	Breeding: Arctic tern <i>Sterna paradisaea</i> Storm petrel <i>Hydrobates pelagicus</i>	N/A	N/A
Copinsay SPA	125.42	N/A	N/A	Breeding: Seabirds
Sule Skerry and Sule Stack SPA	18.9	Breeding: Leach's storm petrel <i>Oceanodroma leucorhoa</i> Storm petrel <i>Hydrobates pelagicus</i>	Breeding: Gannet <i>Morus bassanus</i> Puffin <i>Fraterculus arctica</i>	Breeding: Seabird
NORTH COAST OF SCOTLAND				
Cape Wrath SPA	1019.18	N/A	N/A	Breeding: Seabirds
North Sutherland Coastal Islands SPA	221.11	Over winter: Barnacle goose <i>Branta leucopsis</i>	N/A	N/A
North Caithness Cliffs SPA	557.73	Breeding: Peregrine <i>Falco peregrinus</i>	Breeding: Guillemot <i>Uria aalge</i>	Breeding: Seabirds
MORAY FIRTH AND ABERDEENSHIRE				
East Caithness Cliffs SPA	442.62	Breeding: Peregrine <i>Falco peregrinus</i>	Breeding: Guillemot <i>Uria aalge</i> Kittiwake <i>Rissa tridactyla</i> Razorbill <i>Alca torda</i>	Breeding: Seabirds
Dornoch Firth and Loch Fleet SPA	7836.33	Breeding: Osprey <i>Pandion haliaetus</i> Over winter: Bar-tailed godwit <i>Limosa lapponica</i>	Over winter: Greylag goose <i>Anser anser</i> Wigeon <i>Anas penelope</i>	Over winter: Waterfowl

Site Name	Area (ha)	Article 4.1 Species	Article 4.2 Migratory species	Article 4.2 Assemblages ¹
Loch Eye SPA	205.14	Over winter: Whooper swan <i>Cygnus cygnus</i>	Over winter: Whooper swan <i>Cygnus cygnus</i>	N/A
Cromarty Firth SPA	3766.24	Breeding: Common tern <i>Sterna hirundo</i> Osprey <i>Pandion haliaetus</i> Over winter: Bar-tailed godwit <i>Limosa lapponica</i> Whooper swan <i>Cygnus cygnus</i>	Over winter: Greylag goose <i>Anser anser</i>	Over winter: Waterfowl
Inner Moray Firth SPA	2339.23	Breeding: Common tern <i>Sterna hirundo</i> Osprey <i>Pandion haliaetus</i> Over winter: Bar-tailed godwit <i>Limosa lapponica</i>	Over winter: Greylag goose <i>Anser anser</i> Red-breasted Merganser <i>Mergus serrator</i> Redshank <i>Tringa totanus</i> Scaup <i>Aythya marila</i>	Over winter: Waterfowl
Moray and Nairn Coast SPA	2410.25	Breeding: Osprey <i>Pandion haliaetus</i> Over winter: Bar-tailed godwit <i>Limosa lapponica</i>	Over winter: Greylag goose <i>Anser anser</i> Pink-footed goose <i>Anser brachyrhynchus</i> Redshank <i>Tringa totanus</i>	Over winter: Waterfowl
Troup, Pennan and Lion's Heads SPA	174.22	N/A	Breeding: Guillemot <i>Uria aalge</i>	Breeding: Seabirds
Loch of Strathbeg SPA	615.94	Breeding: Sandwich tern <i>Sterna sandvicensis</i> Over winter: Barnacle goose <i>Branta leucopsis</i> Whooper swan <i>Cygnus cygnus</i>	Over winter: Greylag goose <i>Anser anser</i> Pink-footed goose <i>Anser brachyrhynchus</i>	Over winter: Waterfowl
Buchan Ness to Collieston Coast SPA	208.62	N/A	N/A	Breeding: Seabirds

Site Name	Area (ha)	Article 4.1 Species	Article 4.2 Migratory species	Article 4.2 Assemblages ¹
Ythan Estuary, Sands of Forvie and Meikle Loch SPA	1016.24	Breeding: Common tern <i>Sterna hirundo</i> Little tern <i>Sterna albifrons</i> Sandwich tern <i>Sterna sandvicensis</i>	Over winter: Pink-footed goose <i>Anser brachyrhynchus</i>	Over winter: Waterfowl
Fowlsheugh SPA	10.15	N/A	Breeding: Guillemot <i>Uria aalge</i> Kittiwake <i>Rissa tridactyla</i>	Breeding: Seabirds
SOUTH OF ABERDEENSHIRE TO BORDERS				
Montrose Basin SPA	984.61	N/A	Over winter: Greylag goose <i>Anser anser</i> Knot <i>Calidris canutus</i> Pink-footed goose <i>Anser brachyrhynchus</i> Redshank <i>Tringa totanus</i>	Over winter: Waterfowl
Firth of Tay and Eden Estuary SPA	6923.29	Breeding: Little tern <i>Sterna albifrons</i> Marsh harrier <i>Circus aeruginosus</i> Over winter: Bar-tailed godwit <i>Limosa lapponica</i>	Over winter: Greylag goose <i>Anser anser</i> Pink-footed goose <i>Anser brachyrhynchus</i> Redshank <i>Tringa totanus</i>	Over winter: Waterfowl
Firth of Forth Islands SPA	105.06	Breeding: Arctic tern <i>Sterna paradisaea</i> Common tern <i>Sterna hirundo</i> Roseate tern <i>Sterna dougallii</i> Sandwich tern <i>Sterna sandvicensis</i>	Breeding: Gannet <i>Morus bassanus</i> Lesser black-backed Gull <i>Larus fuscus</i> Puffin <i>Fratercula arctica</i> Shag <i>Phalacrocorax aristotelis</i>	Breeding: Seabirds

Site Name	Area (ha)	Article 4.1 Species	Article 4.2 Migratory species	Article 4.2 Assemblages ¹
Firth of Forth SPA	tbc	On passage: Sandwich tern <i>Sterna sandvicensis</i> Over winter: Bar-tailed godwit <i>Limosa lapponica</i> Golden plover <i>Pluvialis apricaria</i> Red-throated diver <i>Gavia stellata</i> Slavonian grebe <i>Podiceps auritus</i>	Over winter: Knot <i>Calidris canutus</i> Pink-footed goose <i>Anser brachyrhynchus</i> Redshank <i>Tringa totanus</i> Shelduck <i>Tadorna tadorna</i> Turnstone <i>Arenaria interpres</i>	Over winter: Waterfowl
St. Abb's Head to Fast Castle SPA	247.85	N/A	N/A	Breeding: Seabirds
NORTH EAST ENGLAND				
Lindisfarne SPA	3679.22	Breeding: Little tern <i>Sterna albifrons</i> Over winter: Bar-tailed godwit <i>Limosa lapponica</i> Golden plover <i>Pluvialis apricaria</i> Whooper swan <i>Cygnus cygnus</i>	On passage: Ringed plover <i>Charadrius hiaticula</i> Over winter: Grey plover <i>Pluvialis squatarola</i> Greylag goose <i>Anser anser</i> Knot <i>Calidris canutus</i> Light-bellied Brent goose <i>Branta bernicla hrota</i> Wigeon <i>Anas penelope</i>	Over winter: Waterfowl
Farne Islands SPA	101.86	Breeding: Arctic tern <i>Sterna paradisaea</i> Common tern <i>Sterna hirundo</i> Roseate tern <i>Sterna dougallii</i> Sandwich tern <i>Sterna sandvicensis</i>	Breeding: Guillemot <i>Uria aalge</i> Puffin <i>Fratercula arctica</i>	Breeding: Seabirds
Northumbria Coast SPA	1107.98	Breeding: Little tern <i>Sterna albifrons</i>	Over winter: Purple sandpiper <i>Calidris maritima</i> Turnstone <i>Arenaria interpres</i>	N/A

Site Name	Area (ha)	Article 4.1 Species	Article 4.2 Migratory species	Article 4.2 Assemblages ¹
Coquet Island SPA	22.28	Breeding: Arctic tern <i>Sterna paradisaea</i> Common tern <i>Sterna hirundo</i> Roseate tern <i>Sterna dougallii</i> Sandwich tern <i>Sterna sandvicensis</i>	Breeding: Puffin <i>Fratercula arctica</i>	Breeding: Seabirds
Teesmouth and Cleveland Coast SPA	1247.31	Breeding: Little tern <i>Sterna albifrons</i> On passage: Sandwich tern <i>Sterna sandvicensis</i>	On passage: Ringed plover <i>Charadrius hiaticula</i> Over winter: Knot <i>Calidris canutus</i> Redshank <i>Tringa totanus</i>	Over winter: Waterfowl
YORKSHIRE AND HUMBER				
Flamborough Head and Bempton Cliffs SPA	212.17	N/A	Breeding: Kittiwake <i>Rissa tridactyla</i>	Breeding: Seabirds
Humber Flats, Marshes and Coast (Phases 1 and 2) SPA	15202.53	Breeding: Little tern <i>Sterna albifrons</i> Marsh harrier <i>Circus aeruginosus</i> Over winter: Bar-tailed godwit <i>Limosa lapponica</i> Bittern <i>Botaurus stellaris</i> Golden plover <i>Pluvialis apricaria</i> Hen harrier <i>Circus cyaneus</i>	On passage: Redshank <i>Tringa totanus</i> Sanderling <i>Calidris alba</i> Over winter: Dunlin <i>Calidris alpina alpina</i> Knot <i>Calidris canutus</i> Redshank <i>Tringa totanus</i> Shelduck <i>Tadorna tadorna</i>	Over winter: Waterfowl
LINCOLNSHIRE, NORFOLK and SUFFOLK				
Gibraltar Point SPA	414.09	Breeding: Little tern <i>Sterna albifrons</i> Over winter: Bar-tailed godwit <i>Limosa lapponica</i>	Over winter: Grey plover <i>Pluvialis squatarola</i> Knot <i>Calidris canutus</i>	Over winter: Waterfowl

Site Name	Area (ha)	Article 4.1 Species	Article 4.2 Migratory species	Article 4.2 Assemblages ¹
The Wash SPA	62211.66	Breeding: Common tern <i>Sterna hirundo</i> Little tern <i>Sterna albifrons</i> Marsh harrier <i>Circus aeruginosus</i> Over winter: Avocet <i>Recurvirostra avosetta</i> Bar-tailed godwit <i>Limosa lapponica</i> Golden plover <i>Pluvialis apricaria</i> Whooper swan <i>Cygnus cygnus</i>	On passage: Ringed plover <i>Charadrius hiaticula</i> Sanderling <i>Calidris alba</i> Over winter: Black-tailed godwit <i>Limosa limosa islandica</i> Curlew <i>Numenius arquata</i> Dark-bellied Brent goose <i>Branta bernicla bernicla</i> Dunlin <i>Calidris alpina alpina</i> Grey plover <i>Pluvialis squatarola</i> Knot <i>Calidris canutus</i> Oystercatcher <i>Haematopus ostralegus</i> Pink-footed goose <i>Anser brachyrhynchus</i> Pintail <i>Anas acuta</i> Redshank <i>Tringa totanus</i> Shelduck <i>Tadorna tadorna</i> Turnstone <i>Arenaria interpres</i>	Over winter: Waterfowl

Site Name	Area (ha)	Article 4.1 Species	Article 4.2 Migratory species	Article 4.2 Assemblages ¹
North Northfolk Coast SPA	7886.79	Breeding: Avocet <i>Recurvirostra avosetta</i> Bittern <i>Botaurus stellaris</i> Common tern <i>Sterna hirundo</i> Little tern <i>Sterna albifrons</i> Marsh harrier <i>Circus aeruginosus</i> Mediterranean gull <i>Larus melanocephalus</i> Roseate tern <i>Sterna dougallii</i> Sandwich tern <i>Sterna sandvicensis</i> Over winter: Avocet <i>Recurvirostra avosetta</i> Bar-tailed godwit <i>Limosa lapponica</i> Bittern <i>Botaurus stellaris</i> Golden plover <i>Pluvialis apricaria</i> Hen harrier <i>Circus cyaneus</i> Ruff <i>Philomachus pugnax</i>	Breeding: Redshank <i>Tringa totanus</i> Ringed plover <i>Charadrius hiaticula</i> On passage: Ringed plover <i>Charadrius hiaticula</i> Over winter: Dark-bellied Brent goose <i>Branta bernicla bernicla</i> Knot <i>Calidris canutus</i> Pink-footed goose <i>Anser brachyrhynchus</i> Pintail <i>Anas acuta</i> Redshank <i>Tringa totanus</i> Wigeon <i>Anas penelope</i>	Over winter: Waterfowl

Site Name	Area (ha)	Article 4.1 Species	Article 4.2 Migratory species	Article 4.2 Assemblages ¹
Broadland SPA	5462.4	Breeding: Bittern <i>Botaurus stellaris</i> Marsh harrier <i>Circus aeruginosus</i> Over winter: Bewick's swan <i>Cygnus columbianus bewickii</i> Bittern <i>Botaurus stellaris</i> Ruff <i>Philomachus pugnax</i> Whooper swan <i>Cygnus cygnus</i>	Over winter: Gadwall <i>Anas strepera</i> Pink-footed goose <i>Anser brachyrhynchus</i> Shoveler <i>Anas clypeata</i>	Over winter: Waterfowl
Great Yarmouth North Denes SPA	149.19	Breeding: Little tern <i>Sterna albifrons</i>	N/A	N/A
Breydon Water SPA	1202.94	Breeding: Common tern <i>Sterna hirundo</i> Over winter: Avocet <i>Recurvirostra avosetta</i> Bewick's swan <i>Cygnus columbianus bewickii</i> Golden plover <i>Pluvialis apricaria</i>	N/A	Over winter: Waterfowl
Benacre to Easton Barents SPA	516.83	Breeding: Bittern <i>Botaurus stellaris</i> Little tern <i>Sterna albifrons</i> Marsh harrier <i>Circus aeruginosus</i> Over winter: Bittern <i>Botaurus stellaris</i>	N/A	N/A

Site Name	Area (ha)	Article 4.1 Species	Article 4.2 Migratory species	Article 4.2 Assemblages ¹
Minsmere-Walberswick SPA	2018.92	Breeding: Avocet <i>Recurvirostra avosetta</i> Bittern <i>Botaurus stellaris</i> Little tern <i>Sterna albifrons</i> Marsh harrier <i>Circus aeruginosus</i> Nightjar <i>Caprimulgus europaeus</i> Woodlark <i>Lullula arborea</i> Over winter: Avocet <i>Recurvirostra avosetta</i> Bittern <i>Botaurus stellaris</i> Hen harrier <i>Circus cyaneus</i>	N/A	N/A
Alde-Ore Estuary SPA	2416.87	Breeding: Avocet <i>Recurvirostra avosetta</i> Little tern <i>Sterna albifrons</i> Marsh harrier <i>Circus aeruginosus</i> Sandwich tern <i>Sterna sandvicensis</i> Over winter: Avocet <i>Recurvirostra avosetta</i>	Breeding: Lesser black-backed gull <i>Larus fuscus</i> Over winter: Redshank <i>Tringa totanus</i>	Breeding: Seabirds Over winter: Waterfowl
Deben Estuary SPA	978.93	Over winter: Avocet <i>Recurvirostra avosetta</i>	N/A	N/A

Site Name	Area (ha)	Article 4.1 Species	Article 4.2 Migratory species	Article 4.2 Assemblages ¹
Stour and Orwell Estuaries SPA	3323.62	Over winter: Hen harrier <i>Circus cyaneus</i>	Over winter: Black-tailed godwit <i>Limosa limosa islandica</i> Dunlin <i>Calidris alpina alpina</i> Grey plover <i>Pluvialis squatarola</i> Pintail <i>Anas acuta</i> Redshank <i>Tringa totanus</i> Ringed plover <i>Charadrius hiaticula</i> Shelduck <i>Tadorna tadorna</i> Turnstone <i>Arenaria interpres</i>	Over winter: Waterfowl
ESSEX AND KENT				
Hamford Water SPA	2187.21	Breeding: Little tern <i>Sterna albifrons</i> Over winter: Avocet <i>Recurvirostra avosetta</i> Golden plover <i>Pluvialis apricaria</i> Ruff <i>Philomachus pugnax</i>	On passage: Ringed plover <i>Charadrius hiaticula</i> Over winter: Black-tailed godwit <i>Limosa limosa islandica</i> Dark-bellied Brent goose <i>Branta bernicla bernicla</i> Grey plover <i>Pluvialis squatarola</i> Ringed plover <i>Charadrius hiaticula</i> Teal <i>Anas crecca</i>	Over winter: Waterfowl
Colne Estuary (Mid-Essex Coast Phase 2) SPA	2701.43	Breeding: Little tern <i>Sterna albifrons</i> Over winter: Avocet <i>Recurvirostra avosetta</i> Golden plover <i>Pluvialis apricaria</i> Hen harrier <i>Circus cyaneus</i>	Over winter: Dark-bellied Brent goose <i>Branta bernicla bernicla</i> Redshank <i>Tringa totanus</i>	Over winter: Waterfowl

Site Name	Area (ha)	Article 4.1 Species	Article 4.2 Migratory species	Article 4.2 Assemblages ¹
Blackwater Estuary (Mid-Essex Coast Phase 4) SPA	4395.15	Breeding: Little tern <i>Sterna albifrons</i> Over winter: Avocet <i>Recurvirostra avosetta</i> Golden plover <i>Pluvialis apricaria</i> Hen harrier <i>Circus cyaneus</i> Ruff <i>Philomachus pugnax</i>	On passage: Ringed plover <i>Charadrius hiaticula</i> Over winter: Black-tailed Godwit <i>Limosa limosa islandica</i> Dark-bellied Brent goose <i>Branta bernicla bernicla</i> Dunlin <i>Calidris alpina alpina</i> Grey plover <i>Pluvialis squatarola</i> Redshank <i>Tringa totanus</i> Ringed plover <i>Charadrius hiaticula</i> Shelduck <i>Tadorna tadorna</i>	Over winter: Waterfowl
Crouch and Roach Estuaries (Mid-Essex Coast Phase 3) SPA	1735.58	N/A	Over winter: Dark-bellied Brent goose <i>Branta bernicla bernicla</i>	N/A
Dengie (Mid-Essex Coast Phase 1) SPA	3127.23	Over winter: Bar-tailed godwit <i>Limosa lapponica</i> Hen harrier <i>Circus cyaneus</i>	Over winter: Grey plover <i>Pluvialis squatarola</i> Knot <i>Calidris canutus</i>	Over winter: Waterfowl
Benfleet and Southend Marshes SPA	2251.31	N/A	On passage: Ringed plover <i>Charadrius hiaticula</i> Over winter: Dark-bellied Brent goose <i>Branta bernicla bernicla</i> Grey plover <i>Pluvialis squatarola</i> Knot <i>Calidris canutus</i>	Over winter: Waterfowl

Site Name	Area (ha)	Article 4.1 Species	Article 4.2 Migratory species	Article 4.2 Assemblages ¹
Foulness (Mid-Essex Coast Phase 5) SPA	10968.9	Breeding: Avocet <i>Recurvirostra avosetta</i> Common tern <i>Sterna hirundo</i> Little Tern <i>Sterna albifrons</i> Sandwich tern <i>Sterna sandvicensis</i> Over winter: Avocet <i>Recurvirostra avosetta</i> Bar-tailed godwit <i>Limosa lapponica</i> Golden plover <i>Pluvialis apricaria</i> Hen harrier <i>Circus cyaneus</i>	On passage: Redshank <i>Tringa totanus</i> Over winter: Dark-bellied Brent goose <i>Branta bernicla bernicla</i> Grey plover <i>Pluvialis squatarola</i> Knot <i>Calidris canutus</i> Oystercatcher <i>Haematopus ostralegus</i>	Over winter: Waterfowl
Thames Estuary and Marshes SPA	4838.94	Over winter: Avocet <i>Recurvirostra avosetta</i> Hen harrier <i>Circus cyaneus</i>	On passage: Ringed plover <i>Charadrius hiaticula</i> Over winter: Ringed plover <i>Charadrius hiaticula</i>	Over winter: Waterfowl
The Greater Thames Estuary pSPA	TBC	Red-throated diver <i>Gavia stellata</i> , black-throated diver <i>Gavia arctica</i>	N/A	N/A

Site Name	Area (ha)	Article 4.1 Species	Article 4.2 Migratory species	Article 4.2 Assemblages ¹
Medway Estuary and Marshes SPA	4684.36	Breeding: Avocet <i>Recurvirostra avosetta</i> Little Tern <i>Sterna albifrons</i> Over winter: Avocet <i>Recurvirostra avosetta</i>	On passage: Ringed plover <i>Charadrius hiaticula</i> Over winter: Black-tailed godwit <i>Limosa limosa islandica</i> Dark-bellied Brent goose <i>Branta bernicla bernicla</i> Dunlin <i>Calidris alpina alpina</i> Grey plover <i>Pluvialis squatarola</i> Pintail <i>Anas acuta</i> Redshank <i>Tringa totanus</i> Ringed plover <i>Charadrius hiaticula</i> Shelduck <i>Tadorna tadorna</i>	Over winter: Waterfowl
The Swale SPA	6514.71	Breeding: Avocet <i>Recurvirostra avosetta</i> Marsh harrier <i>Circus aeruginosus</i> Mediterranean gull <i>Larus melanocephalus</i> Over winter: Avocet <i>Recurvirostra avosetta</i> Bar-tailed godwit <i>Limosa lapponica</i> Golden plover <i>Pluvialis apricaria</i> Hen harrier <i>Circus cyaneus</i>	On passage: Ringed plover <i>Charadrius hiaticula</i> Over winter: Black-tailed godwit <i>Limosa limosa islandica</i> Grey plover <i>Pluvialis squatarola</i> Knot <i>Calidris canutus</i> Pintail <i>Anas acuta</i> Redshank <i>Tringa totanus</i> Shoveler <i>Anas clypeata</i>	Over winter: Waterfowl
Thanet Coast and Sandwich Bay SPA	1870.16	N/A	Over winter: Turnstone <i>Arenaria interpres</i>	N/A

Site Name	Area (ha)	Article 4.1 Species	Article 4.2 Migratory species	Article 4.2 Assemblages ¹
Dungeness to Pett Level SPA	1474.04	Breeding: Common tern <i>Sterna hirundo</i> Little tern <i>Sterna albifrons</i> Mediterranean gull <i>Larus melanocephalus</i> On passage: Aquatic warbler <i>Acrocephalus paludicola</i> Over winter: Bewick's swan <i>Cygnus columbianus bewickii</i>	Over winter: Shoveler <i>Anas clypeata</i>	N/A

Table A12.2 – West Coast SPAs from North Rona and Sula Sgeir to Pembrokeshire and their Qualifying Features

Site Name	Area (ha)	Article 4.1 Species	Article 4.2 Migratory species	Article 4.2 Assemblages
NORTH RONA TO COLONSAY				
North Rona and Sula Sgeir SPA	TBC	Breeding: Leach's storm-petrel <i>Oceanodroma leucorhoa</i>	Breeding: Gannet <i>Morus bassanus</i> Guillemot <i>Uria aalge</i>	Breeding: Seabird
Flannan Isles SPA	58.87	Breeding: Leach's storm-petrel <i>Oceanodroma leucorhoa</i>	N/A	Breeding: Seabird
St Kilda	865.51	Breeding: Leach's storm-petrel <i>Oceanodroma leucorhoa</i>	Breeding: Gannet <i>Morus bassanus</i> Great skua <i>Catharacta skua</i> Puffin <i>Fratercula arctica</i>	Breeding: Seabird

Site Name	Area (ha)	Article 4.1 Species	Article 4.2 Migratory species	Article 4.2 Assemblages
North Uist Machair and Islands SPA	4876.35	Breeding: Corncrake <i>Crex crex</i> Over winter: Barnacle goose <i>Branta leucopsis</i>	Breeding: Dunlin <i>Calidris alpina schinzii</i> Oystercatcher <i>Haematopus ostralegus</i> Redshank <i>Tringa tetanus</i> Ringed plover <i>Charadrius hiaticula</i> Over winter: Purple sandpiper <i>Calidris maritima</i> Ringed plover <i>Charadrius hiaticula</i> Turnstone <i>Arenaria interpres</i>	N/A
Mointeach Scadabhaigh SPA	4148.44	Breeding: Black-throated diver <i>Gavia arctica</i> Red-throated diver <i>Gavia stellata</i>	N/A	N/A
Monach Islands SPA	595.74	Breeding: Common tern <i>Sterna hirundo</i> Little tern <i>Sterna albifrons</i> Over winter: Barnacle goose <i>Branta leucopsis</i>	N/A	N/A
Aird and Borve, Benbecula SPA	361	Breeding: Corncrake <i>Crex crex</i>	N/A	N/A
South Uist Machair and Lochs SPA	3352.28	Breeding: Corncrake <i>Crex crex</i> Little tern <i>Sterna albifrons</i>	Breeding: Dunlin <i>Calidris alpina schinzii</i> Oystercatcher <i>Haematopus ostralegus</i> Redshank <i>Tringa tetanus</i> Ringed plover <i>Charadrius hiaticula</i> Over winter: Ringed plover <i>Charadrius hiaticula</i> Sanderling <i>Calidris alba</i>	N/A
Kilpheder to Smerclate, South Uist SPA	380.63	Breeding: Corncrake <i>Crex crex</i>	N/A	N/A
Eoligarry, Barra SPA	144.04	Breeding: Corncrake <i>Crex crex</i>	N/A	N/A

Site Name	Area (ha)	Article 4.1 Species	Article 4.2 Migratory species	Article 4.2 Assemblages
Mingulay and Berneray SPA	911.07	N/A	Breeding: Razorbill <i>Alca torda</i>	Breeding: Seabird
Handa Island SPA	367.49	N/A	Breeding: Guillemot <i>Uria aalge</i> Razorbill <i>Alca torda</i>	Breeding: Seabird
Priest Island SPA	131.68	Breeding: Storm petrel <i>Hydrobates pelagicus</i>	N/A	N/A
Shiant Isles SPA	212.33	Over winter: Barnacle goose <i>Branta leucopsis</i>	Breeding: Puffin <i>Fratercula arctica</i> Razorbill <i>Alca torda</i>	Breeding: Seabird
Canna and Sanday SPA	1341.27	N/A	N/A	Breeding: Seabird
Rum SPA	10942.38	Breeding: Golden eagle <i>Aquila chrysaetos</i> Red-throated diver <i>Gavia stellata</i>	Breeding: Manx shearwater <i>Puffinus puffinus</i>	Breeding: Seabird
Coll SPA	2321.88	Over winter: Barnacle goose <i>Branta leucopsis</i> Greenland white-fronted goose <i>Anser albifrons flavirostris</i>	N/A	N/A
Coll (Concrake) SPA	371.13	Breeding: Corncrake <i>Crex crex</i>	N/A	N/A
Sleibhtean agus Cladach Thiriodh SPA	TBC	Over winter: Barnacle Goose <i>Branta leucopsis</i> Greenland White-fronted Goose <i>Anser albifrons flavirostris</i>	Breeding: Dunlin: <i>Calidris alpine schinzii</i> Oystercatcher <i>Haematopus ostralegus</i> Redshank <i>Tringa tetanus</i> Ringed Plover <i>Charadrius hiaticula</i> Over winter: Turnstone <i>Arenaria interpres</i>	N/A
Treshnish Isles SPA	240.67	Breeding: Storm petrel <i>Hydrobates pelagicus</i> Over winter: Barnacle goose <i>Branta leucopsis</i>	N/A	N/A
Glas Eileanan SPA	1.43	Breeding: Common tern <i>Sterna hirundo</i>	N/A	N/A

Site Name	Area (ha)	Article 4.1 Species	Article 4.2 Migratory species	Article 4.2 Assemblages
Cnuic agus Cladach Mhuile SPA	TBC	Breeding: Golden Eagle <i>Aquila chrysaetos</i>	N/A	N/A
North Colonsay and Western Cliffs SPA	973.6	Breeding: Chough <i>Pyrhacorax pyrrhacorax</i> Over winter: Chough <i>Pyrhacorax pyrrhacorax</i>	N/A	Breeding: Seabird
Oronsay and South Colonsay pSPA				
ISLAY TO KINTYRE				
Gruinart Flats, Islay SPA	3261.32	Over winter: Barnacle goose <i>Branta leucopsis</i> Greenland white-fronted goose <i>Anser albifrons flavirostris</i>	N/A	N/A
Rinns of Islay SPA	9407.46	Breeding: Chough <i>Pyrhacorax pyrrhacorax</i> Corncrake <i>Crex crex</i> Hen harrier <i>Circus cyaneus</i> On passage: Whooper swan <i>Cygnus Cygnus</i> Over winter: Chough <i>Pyrhacorax pyrrhacorax</i> Greenland white-fronted goose <i>Anser albifrons flavirostris</i>	Breeding: Common scoter <i>Melanitta nigra</i>	N/A
Bridgend Flats, Islay SPA	331.16	Over winter: Barnacle goose <i>Branta leucopsis</i>	N/A	N/A
Laggan, Islay SPA	1230.02	Over winter: Barnacle goose <i>Branta leucopsis</i> Greenland white-fronted goose <i>Anser albifrons flavirostris</i>	N/A	N/A
The Oa pSPA				
NORTH NORTHERN IRELAND				

Site Name	Area (ha)	Article 4.1 Species	Article 4.2 Migratory species	Article 4.2 Assemblages
Raithlin Island SPA	3344.62	Breeding: Peregrine <i>Falco peregrinus</i>	Breeding: Guillemot <i>Uria aalae</i> Razorbill <i>Alca torda</i>	Breeding: Seabird
Sheep Island SPA	3.5	Breeding: Cormorant <i>Phalacrocorax carbo</i>	N/A	N/A
EAST NORTHERN IRELAND				
Larne Lough SPA	395.94	Breeding: Common tern <i>Sterna hirundo</i> Roseate tern <i>Sterna dougallii</i> Sandwich tern <i>Sterna sandvicensis</i>	Over winter: Light-bellied Brent goose <i>Branta bernicula hrota</i>	N/A
Belfast Lough SPA	432.14	Over winter: Bar-tailed godwit <i>Limosa lapponica</i>	Redshank <i>Tringa tetanus</i> Turnstone <i>Arenaria interpres</i>	Over winter: Waterfowl
Belfast Lough Open Water pSPA				
Outer Ards SPA	1410.41	Breeding: Arctic tern <i>Sterna paradisaea</i> Over winter: Golden plover <i>Pluvialis apricaria</i>	Over winter: Light-bellied Brent goose <i>Branta bernicula hrota</i> Ringed plover <i>Charadrius hiaticula</i> Turnstone <i>Arenaria interpres</i>	N/A
Strangford Lough SPA	15580.79	Breeding: Arctic tern <i>Sterna paradisaea</i> Common tern <i>Sterna hirundo</i> Sandwich tern <i>Sterna sandvicensis</i> Over winter: Bar-tailed godwit <i>Limosa lapponica</i> Golden plover <i>Pluvialis apricaria</i>	Over winter: Knot <i>Calidris canutus</i> Light-bellied Brent goose <i>Branta bernicula hrota</i> Redshank <i>Tringa tetanus</i> Shelduck <i>Tadorna tadorna</i>	Over winter: Waterfowl
Killough Bay SPA	104.23	N/A	Over winter: Light-bellied Brent goose <i>Branta bernicula hrota</i>	N/A

Site Name	Area (ha)	Article 4.1 Species	Article 4.2 Migratory species	Article 4.2 Assemblages
Carlingford Lough SPA	827.12	Breeding: Common tern <i>Sterna hirundo</i> Sandwich tern <i>Sterna sandvicensis</i>	Over winter: Light-bellied Brent goose <i>Branta bernicula hrota</i>	N/A
SOUTHWEST SCOTLAND				
Black Cart SPA	56.3	Over winter: Whooper swan <i>Cygnus cygnus</i>	N/A	N/A
Inner Clyde Estuary SPA	1826.02	N/A	Over winter: Redshank <i>Tringa tetanus</i>	N/A
Ailsa Craig SPA	99.94	N/A	Breeding: Gannet <i>Morus bassanus</i> Lesser black- backed gull <i>Larus fuscus</i>	Breeding: Seabird
Loch of Inch & Torrs Warren SPA	2111.04	Over winter: Greenland white- fronted goose <i>Anser albifrons flavirostris</i> Hen harrier <i>Circus cyaneus</i>	N/A	N/A
Upper Solway Flats and Marshes SPA	30706.26	Over winter: Bar-tailed godwit <i>Limosa lapponica</i> Barnacle goose <i>Branta leucopsis</i> Golden plover <i>Pluvialis apricaria</i> Whooper swan <i>Cygnus cygnus</i>	On passage: Ringed plover <i>Charadrius hiaticula</i> Over winter: Curlew <i>Numenius arquata</i> Dunlin <i>Calidris alpina alpina</i> Knot <i>Calidris canutus</i> Oystercatcher <i>Haematopus ostralegus</i> Pink-footed goose <i>Anser brachyrhynchus</i> Pintail <i>Anas acuta</i> Redshank <i>Tringa tetanus</i>	Over winter: Waterfowl
NORTHWEST ENGLAND				

Site Name	Area (ha)	Article 4.1 Species	Article 4.2 Migratory species	Article 4.2 Assemblages
Duddon Estuary SPA	6806.3	Breeding: Sandwich tern <i>Sterna sandvicensis</i>	On passage: Ringed plover <i>Charadrius hiaticula</i> Sanderling <i>Calidris alba</i> Over winter: Knot <i>Calidris canutus</i> Pintail <i>Anas acuta</i> Redshank <i>Tringa tetanus</i>	Over winter: Waterfowl
Morecambe Bay SPA	37404.6	Breeding: Little tern <i>Sterna albifrons</i> Sandwich tern <i>Sterna sandvicensis</i> Over winter: Bar-tailed godwit <i>Limosa lapponica</i> Golden plover <i>Pluvialis apricaria</i>	Breeding season: Lesser black-backed gull <i>Larus fuscus</i> Herring gull <i>Larus argentatus</i> On passage: Ringed plover <i>Charadrius hiaticula</i> Sanderling <i>Calidris alba</i> Over winter: Curlew <i>Numenius arquata</i> Dunlin <i>Calidris alpina alpina</i> Grey plover <i>Pluvialis squatarola</i> Knot <i>Calidris canutus</i> Oystercatcher <i>Haematopus ostralegus</i> Pink-footed goose <i>Anser brachyrhynchus</i> Pintail <i>Anas acuta</i> Redshank <i>Tringa tetanus</i> Shelduck <i>Tadorna tadorna</i> Turnstone <i>Arenaria interpres</i>	Breeding: Seabird Over winter: Waterfowl

Site Name	Area (ha)	Article 4.1 Species	Article 4.2 Migratory species	Article 4.2 Assemblages
Ribble and Alt Estuaries SPA	12361.13	<p>Breeding: Common tern <i>Sterna hirundo</i></p> <p>Ruff <i>Philomachus pugnax</i></p> <p>Over winter: Bar-tailed godwit <i>Limosa lapponica</i></p> <p>Berwick's swan <i>Cygnus columbianus bewickii</i></p> <p>Golden plover <i>Pluvialis apricaria</i></p> <p>Whooper swan <i>Cygnus cygnus</i></p>	<p>Breeding: Lesser black-backed gull <i>Larus fuscus</i></p> <p>On passage: Ringed plover <i>Charadrius hiaticula</i></p> <p>Sanderling <i>Calidris alba</i></p> <p>Over winter: Black-tailed godwit <i>Limosa limosa islandica</i></p> <p>Dunlin <i>Calidris alpina alpina</i></p> <p>Grey plover <i>Pluvialis squatarola</i></p> <p>Knot <i>Calidris canutus</i></p> <p>Oystercatcher <i>Haematopus ostralegus</i></p> <p>Pink-footed goose <i>Anser brachyrhynchus</i></p> <p>Pintail <i>Anas acuta</i></p> <p>Redshank <i>Tringa tetanus</i></p> <p>Sanderling <i>Calidris alba</i></p> <p>Shelduck <i>Tadorna tadorna</i></p> <p>Teal <i>Anas crecca</i></p> <p>Widgeon <i>Anas penelope</i></p>	<p>Breeding: Seabird</p> <p>Over winter: Waterfowl</p>
Mersey Narrows and North Wirral Foreshore pSPA	2089.41	N/A	<p>Over winter: Redshank <i>Tringa tetanus</i></p> <p>Turnstone <i>Arenaria interpres</i></p>	<p>Over winter: Waterfowl</p>

Site Name	Area (ha)	Article 4.1 Species	Article 4.2 Migratory species	Article 4.2 Assemblages
Mersey Estuary SPA	5033.14	Over winter: Golden plover <i>Pluvialis apricaria</i>	On passage: Redshank <i>Tringa tetanus</i> Ringed plover <i>Charadrius hiaticula</i> Over winter: Dunlin <i>Calidris alpina alpina</i> Pintail <i>Anas acuta</i> Redshank <i>Tringa tetanus</i> Shelduck <i>Tadorna tadorna</i> Teal <i>Anas crecca</i>	Over winter: Waterfowl
Liverpool Bay pSPA	197,504	Red throated diver <i>Gavia stellata</i>	Migratory Species: Common scoter <i>Melanitta nigra</i>	NA
Dee Estuary SPA	13076.29	Breeding: Common tern <i>Sterna hirundo</i> Little tern <i>Sterna albifrons</i> On passage: Sandwich tern <i>Sterna sandvicensis</i> Over winter: Bar-tailed godwit <i>Limosa lapponica</i>	On passage: Redshank <i>Tringa tetanus</i> Over winter: Black-tailed godwit <i>Limosa limosa islandica</i> Curlew <i>Numenius arquata</i> Dunlin <i>Calidris alpina alpina</i> Grey plover <i>Pluvialis squatarola</i> Knot <i>Calidris canutus</i> Oystercatcher <i>Haematopus ostralegus</i> Pintail <i>Anas acuta</i> Redshank <i>Tringa tetanus</i> Shelduck <i>Tadorna tadorna</i> Teal <i>Anas crecca</i>	Over winter: Waterfowl
NORTH AND WEST WALES				

Site Name	Area (ha)	Article 4.1 Species	Article 4.2 Migratory species	Article 4.2 Assemblages
Traeth Lafan / Lavan Sands, Conway Bay SPA	2642.98	N/A	Over winter: Oystercatcher <i>Haematopus ostralegus</i>	N/A
Ynys Seiriol / Puffin Island SPA	31.21	N/A	Breeding: Cormorant <i>Phalacrocorax carbo</i>	N/A
Ynys Feurig, Cemlyn Bay and The Skerries SPA	85.66	Breeding: Arctic tern <i>Sterna paradisaea</i> Common tern <i>Sterna hirundo</i> Roseate tern <i>Sterna dougallii</i> Sandwich tern <i>Sterna sandvicensis</i>	N/A	N/A
Glannau Ynys Gybl/Holy Island Coast SPA	352.59	Breeding: Chough <i>Pyrhacorax pyrrhacorax</i> Over winter: Chough <i>Pyrhacorax pyrrhacorax</i>	N/A	N/A
Glannai Aberdaron and Enlli/Aberdaron Coast and Bardsey Island SPA	505.03	Breeding: Chough <i>Pyrhacorax pyrrhacorax</i> Over winter: Chough <i>Pyrhacorax pyrrhacorax</i>	Breeding: Manx shearwater <i>Puffinus puffinus</i>	N/A
Mynydd Cilan, Trwyn y Wylfa ac Ynysoedd Sant Tudwal SPA	373.55	Breeding: Chough <i>Pyrhacorax pyrrhacorax</i> Over winter: Chough <i>Pyrhacorax pyrrhacorax</i>	N/A	N/A
Dyfi Estuary/Aber Dyfi SPA	2048.11	Over winter: Greenland white-fronted goose <i>Anser albifrons flavirostris</i>	N/A	N/A

Site Name	Area (ha)	Article 4.1 Species	Article 4.2 Migratory species	Article 4.2 Assemblages
Ramsey, St. David's Peninsula Coast SPA	845.63	Breeding: Chough <i>Pyrhacorax pyrrhacorax</i> Over winter: Chough <i>Pyrhacorax pyrrhacorax</i>	N/A	N/A
Grassholm SPA	10.72	N/A	Breeding: Gannet <i>Morus bassanus</i>	N/A
Skokholm and Skomer SPA	427.71	Breeding: Chough <i>Pyrhacorax pyrrhacorax</i> Short-eared owl <i>Asio flammeus</i> Storm petrel <i>Hydrobates pelagicus</i>	Breeding: Lesser black-backed gull <i>Larus fuscus</i> Manx shearwater <i>Puffinus puffinus</i> Puffin <i>Fratercula arctica</i>	Breeding: Seabird

A12.b.2 Coastal and Marine Special Areas of Conservation

Figure A12.7 – Location of SACs – Shetland to the Tay

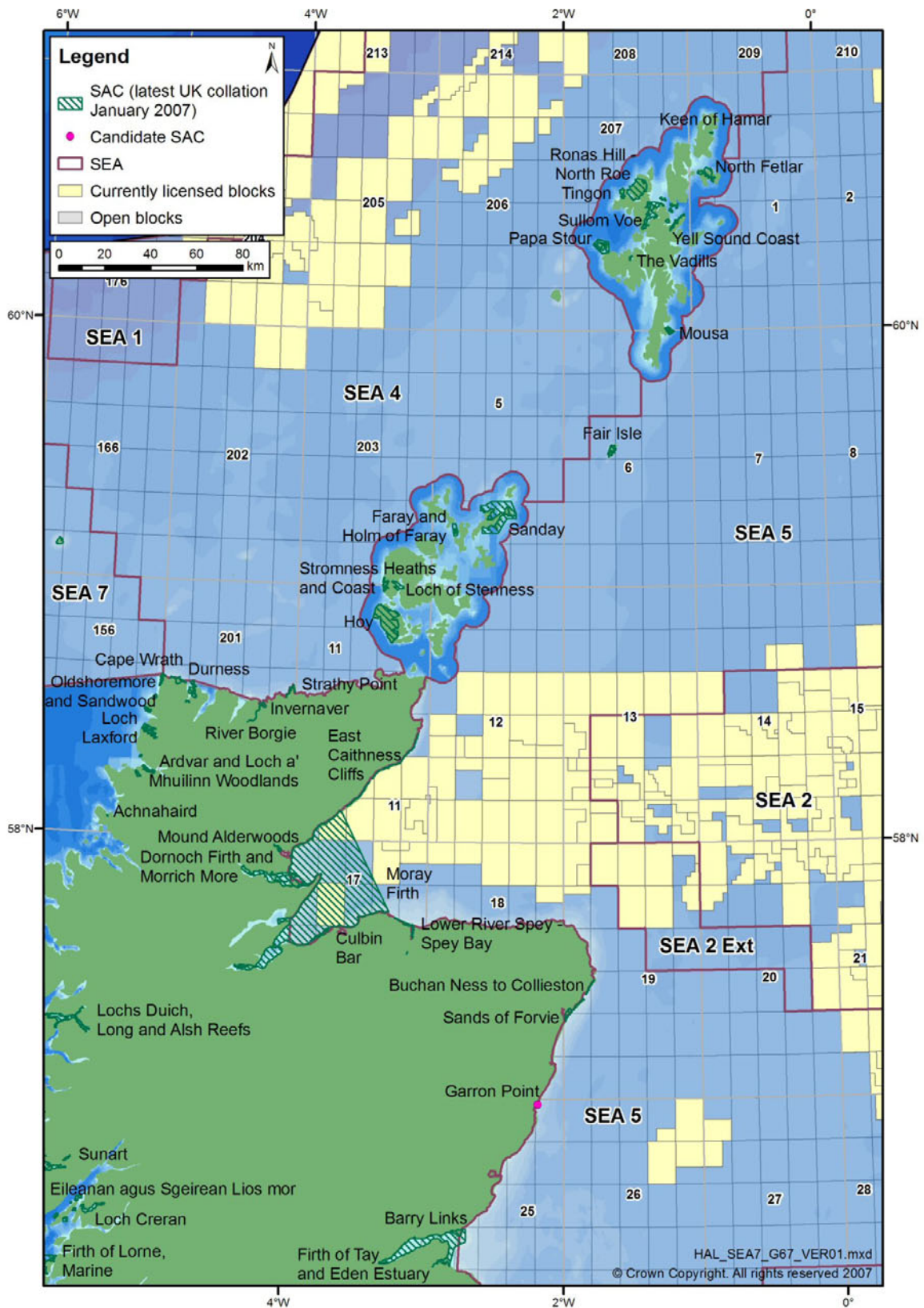


Figure A12.8 – Location of SACs – Forth to Teesmouth and Islay to Pembrokeshire

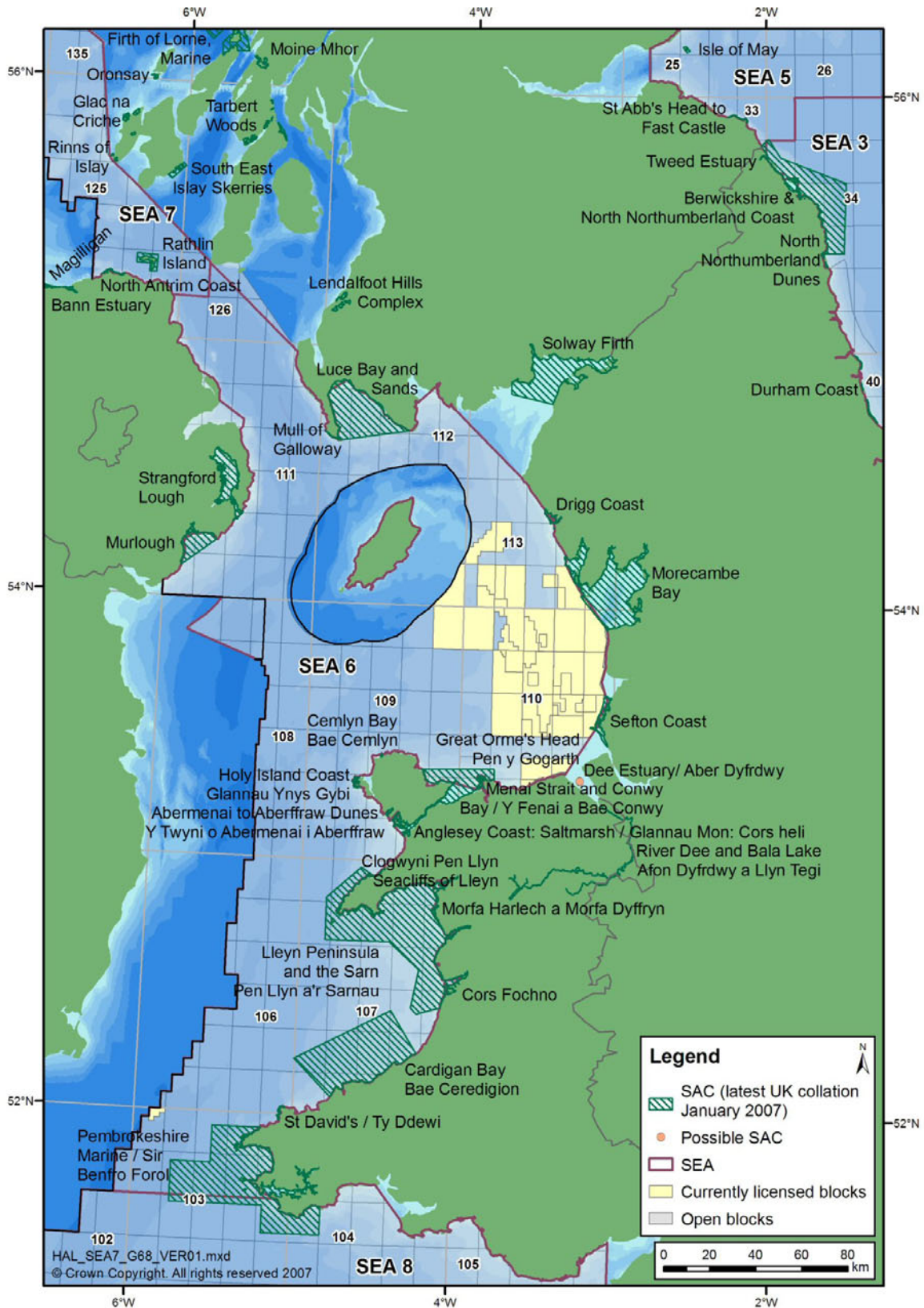


Figure A12.9 – Location of SACs – Northumbria to Kent

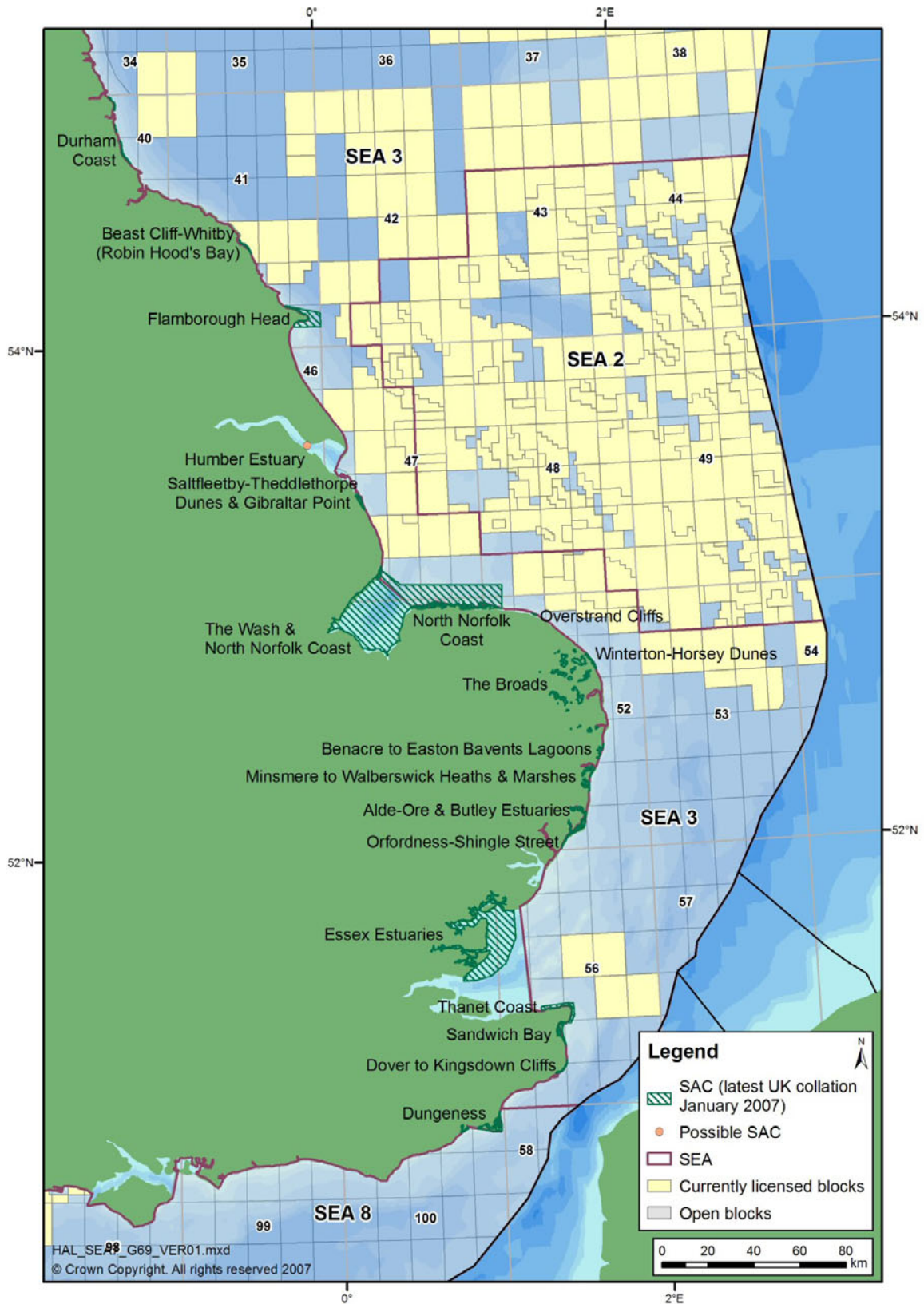


Figure A12.9 – Location of SACs – North Rona to Colonsay

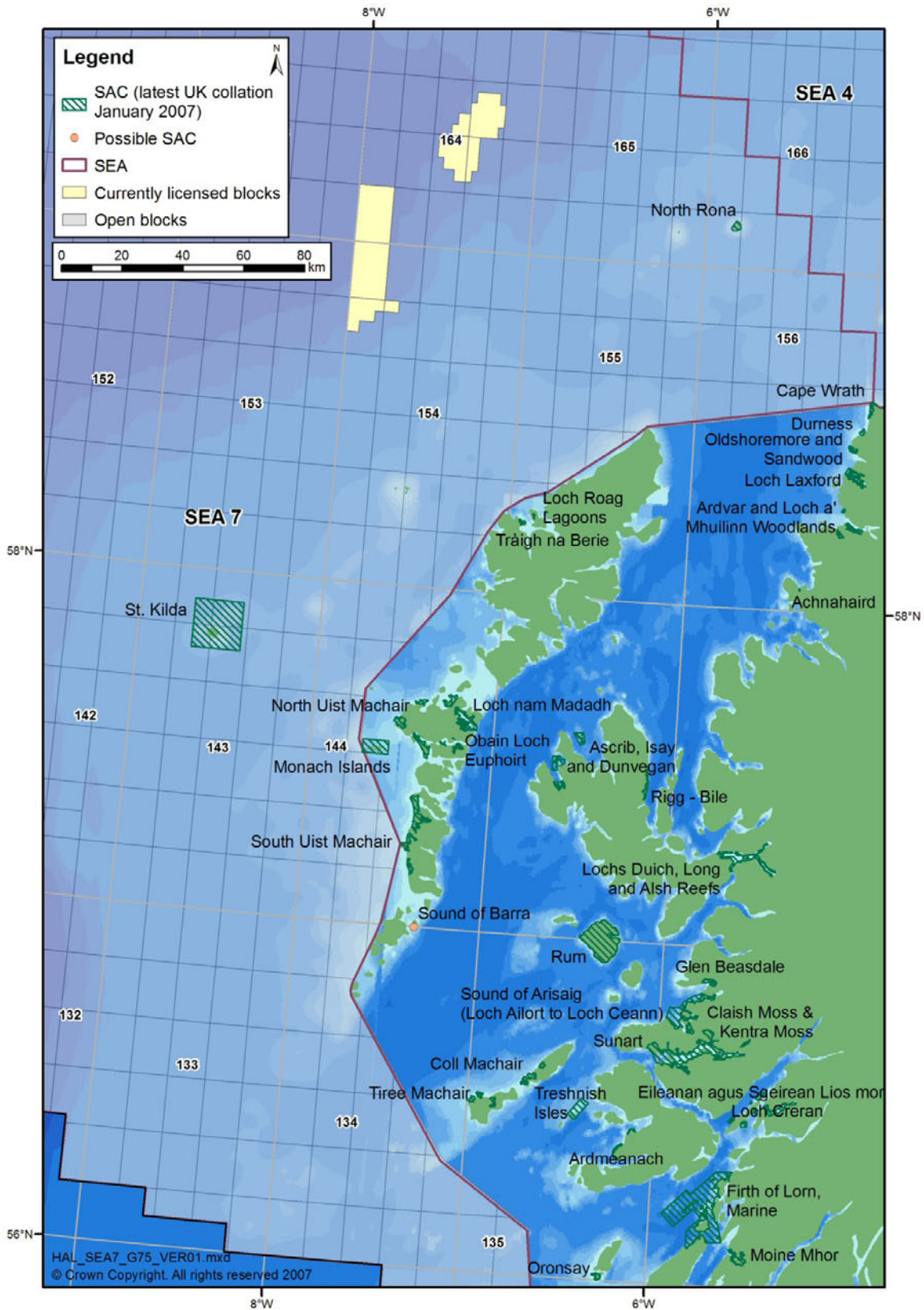


Table A12.3 – East Coast SACs from Shetland to Kent and their Qualifying Features

Site Name	Area (ha)	Annex 1 Habitat Primary	Annex 1 Habitat Qualifying	Annex II Species Primary	Annex II Species Qualifying
SHETLAND					
The Vadills SAC	62.43	Coastal lagoons	N/A	N/A	N/A
Papa Stour SAC	2076.69	Reefs Sea caves	N/A	N/A	N/A
Tingon SAC	569.3	Bogs	Standing freshwater	N/A	N/A
Ronas Hill-North Roe SAC	4900.9	Standing freshwater Heath Bogs	Heath Scree	N/A	N/A
Sullom Voe SAC	2698.55	Inlets and bays	Coastal lagoons Reefs	N/A	N/A
Yell Sound Coast SAC	1540.55	N/A	N/A	Otter <i>Lutra lutra</i> Common seal <i>Phoca vitulina</i>	N/A
Keen of Hamar SAC	38.52	Grasslands Scree	Heath	N/A	N/A
North Fetlar SAC	1581.93	Heath Fens	N/A	N/A	N/A
Mousa SAC	530.6	N/A	Reefs Sea caves	Common seal <i>Phoca vitulina</i>	N/A
Fair Isle SAC	561.27	Sea cliffs	Heaths	N/A	N/A
ORKNEY					
Hoy SAC	9499.7	Sea cliffs Standing freshwater Heath Bog	Heath Fens Rocky slopes	N/A	N/A
Loch of Stenness SAC	791.87	Coastal lagoons	N/A	N/A	N/A
Stromness Heaths and Coasts SAC	635.78	Sea cliffs Heath	Fens	N/A	N/A
Faray and Holm of Faray SAC	785.68	N/A	N/A	Grey seal <i>Halichoerus grypus</i>	N/A

Site Name	Area (ha)	Annex 1 Habitat Primary	Annex 1 Habitat Qualifying	Annex II Species Primary	Annex II Species Qualifying
Sanday DAC	10971.65	Reefs	Sandbanks Mudflats and sandflats	Common seal <i>Phoca vitulina</i>	N/A
NORTH COAST OF SCOTLAND					
Cape Wrath SAC	1018.18	Sea cliffs	N/A	N/A	N/A
Durness SAC	1212.74	Coastal dunes Standing freshwater Grasslands Limestone pavements	Coastal dunes Heath Grasslands Fens	N/A	Otter <i>Lutra lutra</i>
Invernaver SAC	294.54	Coastal dunes Heath Grasslands	Coastal dunes Fens	N/A	N/A
River Borgie SAC	32.72	N/A	N/A	Freshwater pearl mussel <i>Margaritifera margaritifera</i>	Atlantic salmon <i>Salmo salar</i> Otter <i>Lutra lutra</i>
Strathy Point SAC	203.58	Sea cliffs	N/A	N/A	N/A
MORAY FIRTH AND ABERDEENSHIRE					
East Caithness Cliffs SAC	442.64	Sea cliffs	N/A	N/A	N/A
Mound Alderwoods SAC	297.33	Forests	N/A	N/A	N/A
Moray Firth SAC	151341.67	N/A	Sandbanks	Bottlenose dolphin <i>Tursiops truncatus</i>	N/A
Dornoch Firth and Morrich More SAC	8700.53	Estuaries Mudflats and sandflats Saltmarsh and saltmeadows Salt meadows Coastal dunes	Sandbanks Reefs	Otter <i>Lutra lutra</i> Common seal <i>Phoca vitulina</i>	N/A
Culbin Bar SAC	612.88	Vegetation of stony banks	Salt meadows Coastal dunes	N/A	N/A
Lower River Spey - Spey Bay SAC	652.6	Vegetation of stony banks Forests	N/A	N/A	N/A

Site Name	Area (ha)	Annex 1 Habitat Primary	Annex 1 Habitat Qualifying	Annex II Species Primary	Annex II Species Qualifying
Buchan Ness to Collieston SAC	207.52	Sea cliffs	N/A	N/A	N/A
Sands of Forvie SAC	734.05	Coastal dunes	N/A	N/A	N/A
SOUTH OF ABERDEENSHIRE TO THE BORDERS					
Garron Point cSAC	15.58	N/A	N/A	Narrow-mouthed whorl snail <i>Vertigo angustior</i>	N/A
Barry Links SAC	789.67	Coastal dunes	N/A	N/A	N/A
Firth of Tay and Eden Estuary SAC	15412.53	Estuaries	Sandbanks Mudflats and sandflats	Common seal <i>Phoca vitulina</i>	N/A
Isle of May SAC	356.75	N/A	Reefs	Grey seal <i>Halichoerus grypus</i>	N/A
St. Abb's Head to Fast Castle SAC	127.52	Sea cliffs	N/A	N/A	N/A
NORTH EAST ENGLAND					
Berwickshire and North Northumberland Coast SAC	65045.5	Mudflats and sandflats Inlets and Bays Reefs Submerged or partially submerged sea caves	N/A	Grey seal <i>Halichoerus grypus</i>	N/A
Tweed Estuary SAC	155.93	Estuaries Mudflats and sandflats	N/A	N/A	Sea lamprey <i>Petromyzon marinus</i> River lamprey <i>Lampetra fluviatilis</i>
North Northumberland Dunes SAC	1147.56	Coastal dunes		Petalwort <i>Petalophyllum ralfsii</i>	
Durham Coast SAC	393.63	Sea cliffs	N/A	N/A	N/A
YORKSHIRE AND THE HUMBER					
Beast Cliff-Whitby (Robin Hood's Bay) SAC	260.2	Sea cliffs	N/A	N/A	N/A
Flamborough Head SAC	6311.96	Reefs Sea cliffs Sea caves	N/A	N/A	N/A

Site Name	Area (ha)	Annex 1 Habitat Primary	Annex 1 Habitat Qualifying	Annex II Species Primary	Annex II Species Qualifying
Humber Estuary pSAC	39492.89	Priority not assigned Estuaries Coastal lagoons Salt marshes and salt meadows <i>Salicornia</i> and other annuals colonising mud and sand Mudflats and sandflats Sandbanks		Priority not assigned River lamprey <i>Lampetra fluviatilis</i> Sea lamprey <i>Petromyzon marinus</i>	
LINCOLNSHIRE, NORFOLK AND SUFFOLK					
Saltfleetby - Theddlethorpe Dunes and Gibraltar Point SAC	960.2	Coastal dunes	Coastal dunes	N/A	N/A
The Wash and North Norfolk Coast SAC	107761.28	Sandbanks Mudflats and sandflats Inlets and bays Reefs Salt marshes and salt meadows	Coastal lagoons	Common seal <i>Phoca vitulina</i>	Otter <i>Lutra lutra</i>
North Norfolk Coast SAC	3207.37	Coastal lagoons Vegetation of stony banks Salt marshes and salt meadows Coastal dunes			Otter <i>Lutra lutra</i> Petalwort <i>Petalophyllum ralfsii</i>
Overstrand Cliffs SAC	30.02	Sea cliffs	N/A	N/A	N/A

Site Name	Area (ha)	Annex 1 Habitat Primary	Annex 1 Habitat Qualifying	Annex II Species Primary	Annex II Species Qualifying
The Broads SAC	5865.6	Standing freshwater Bog Fens Forests	Grasslands	Desmoulin's whorl snail <i>Vertigo moulinsiana</i> Fen orchid <i>Liparis loeselii</i>	Otter <i>Lutra lutra</i>
Winterton-Horsey Dunes SAC	425.94	Coastal dunes	Coastal dunes	N/A	N/A
Benacre to Easton Barents Lagoons SAC	366.93	Coastal lagoons	N/A	N/A	N/A
Minismere to Walberswick Heaths and Marshes SAC	1265.52	Vegetation of drift lines Heath	Vegetation of stony banks	N/A	N/A
Alde, Ore and Butley Estuaries SAC	1561.53	Estuaries	Mudflats and sandflats Salt marshes and salt meadows	N/A	N/A
Orfordness-Shingle Street SAC	901.19	Coastal lagoons Vegetation of drift lines Vegetation of stony banks	N/A	N/A	N/A
ESSEX AND KENT					
Essex Estuaries SAC	46140.82	Estuaries Mudflats and sandflats Salt marshes and salt meadows	Sandbanks	N/A	N/A
Thanet Coast SAC	2803.84	Reefs Sea caves	N/A	N/A	N/A
Sandwich Bay SAC	1137.87	Coastal dunes	Coastal dunes	N/A	N/A
Dover to Kingsdown Cliffs SAC	183.85	Sea cliffs	Grasslands	N/A	N/A
Dungeness SAC	3223.56	Vegetation of drift lines Vegetation of stony banks	N/A	Great crested newt <i>Triturus cristatus</i>	N/A

Table A12.4 – West Coast SACs from North Rona to Pembrokeshire and their Qualifying Features

Site Name	Area (ha)	Annex 1 Habitat Primary	Annex 1 Habitat Qualifying	Annex II Species Primary	Annex II Species Qualifying
NORTH RONA TO ORONSAY					
North Rona SAC	628.53	N/A	Reefs Sea cliffs Sea caves	Grey seal <i>Halichoerus grypus</i>	N/A
St Kilda SAC	25467.58	Reef Sea cliffs Sea caves	N/A	N/A	N/A
Loch Roag Lagoons SAC	43.62	Coastal lagoons	N/A	N/A	N/A
Tràigh na Berie SAC	153.75	Machairs	N/A	N/A	N/A
North Uist Machair SAC	3048.54	Salt meadows Machairs Standing freshwater	Vegetation of drift lines Coastal dunes	N/A	Slender naiad <i>Najas flexilis</i>
Loch nam Madadh SAC	2320.38	Coastal lagoons Inlets and bays	Sandbanks Mudflats and sandflats Reefs	Otter <i>Lutra lutra</i>	N/A
Monach Islands SAC	3646.58	Machairs	Coastal dunes	Grey seal <i>Halichoerus grypus</i>	N/A
Obain Loch Euphoirt SAC	348.59	Coastal lagoons	N/A	N/A	N/A
South Uist Machair SAC	3432.65	Machairs Standing freshwater	Coastal lagoons Vegetation of drift lines Coastal dunes	Slender naiad <i>Najas flexilis</i>	Otter <i>Lutra lutra</i>
Sound of Barra pSAC					
Durness SAC	1212.74	Coastal dunes Standing freshwater Grasslands Limestone pavements	Coastal dunes Heaths Grasslands Fens		Otter <i>Lutra lutra</i>

Site Name	Area (ha)	Annex 1 Habitat Primary	Annex 1 Habitat Qualifying	Annex II Species Primary	Annex II Species Qualifying
Oldshoremore and Sandwood SAC	443.73	Coastal dunes Machairs	Coastal dunes	N/A	N/A
Loch Laxford SAC	1221.33	Inlets and bays	Reefs	N/A	N/A
Ardvar and Loch a' Mhuilinn Woodlands SAC	805.99	Forest	N/A	N/A	Freshwater pearl mussel <i>Margaritifera margaritifera</i> Otter <i>Lutra lutra</i>
Achnahaird SAC	21.37	N/A	N/A	Petalwort <i>Petalophyllum ralfsii</i>	N/A
Ascrib, Isay and Dunvegan SAC	2584.99	N/A	N/A	Common seal <i>Phoca vitulina</i>	N/A
Rigg – Bile SAC	500.89	Sea cliffs	Forest	N/A	N/A
Lochs Duig, Long and Alsh Reefs SAC	2380.86	Reefs	N/A	N/A	N/A
Rum SAC	10835.33	Standing freshwater Heaths Grasslands Scree	Sea cliffs Heaths Grasslands Bogs Fens Scree Rocky slopes	Otter <i>Lutra lutra</i>	N/A
Glen Beasdale SAC	507.32	Forest	N/A	N/A	Freshwater pearl mussel <i>Margaritifera margaritifera</i> Otter <i>Lutra lutra</i>
Sound of Arisaig (Loch Ailort to Loch Ceann) SAC	4556.65	Sandbanks	N/A	N/A	N/A
Claish Moss & Kentra Moss SAC	1013.78	Bogs	Bogs	N/A	N/A
Sunart SAC	10246.72	Forests	Reefs Heaths Forests	Otter <i>Lutra lutra</i>	N/A
Coll Machair SAC	851.33	Coastal dunes Machairs	Coastal dunes Standing freshwater	Slender naiad <i>Najas flexilis</i>	N/A

Site Name	Area (ha)	Annex 1 Habitat Primary	Annex 1 Habitat Qualifying	Annex II Species Primary	Annex II Species Qualifying
Tiree Machair SAC	785.46	Coastal dunes Machairs Standing freshwater	Coastal dunes	N/A	N/A
Treshnish Isles SAC	1962.66	N/A	Reefs	Grey seal <i>Halichoerus grypus</i>	N/A
Eileanan agus Sgeirean Lios mór SAC	1139.62	N/A	N/A	Common seal <i>Phoca vitulina</i>	N/A
Loch Creran SAC	1226.39	Reefs	N/A	N/A	N/A
Ardmeanach SAC	374.79	Grasslands	Sea cliffs	N/A	N/A
Firth of Lorn, Marine SAC	20975.01	Reefs	N/A	N/A	N/A
Oronsay SAC	340.07	Machairs	N/A	N/A	N/A
ISLAY TO KINTYRE					
Moine Mhor SAC	1150.41	Bogs	Mudflats and sandflats Salt marshes and salt meadows Forests	N/A	Marsh fritillary butterfly <i>Euphydryas (Eurodryas, Hypodryas) aurina</i> Otter <i>Lutra lutra</i>
Glac na Criche SAC	265.33	Bogs	Sea cliffs Heaths	N/A	Marsh fritillary butterfly <i>Euphydryas (Eurodryas, Hypodryas) aurina</i>
Rinns of Islay SAC	1149.7	N/A	N/A	Marsh fritillary butterfly <i>Euphydryas (Eurodryas, Hypodryas) aurina</i>	N/A
South-East Islay Skerries SAC	1498.3	N/A	N/A	Common seal <i>Phoca vitulina</i>	N/A
Tayvallich Juniper and Coast SAC	1213.47	Scrub (matorral)	N/A	Marsh fritillary butterfly <i>Euphydryas (Eurodryas, Hypodryas) aurina</i>	Otter <i>Lutra lutra</i>
Tarbert Woods SAC	1595.97	Forests	N/A	N/A	N/A
NORTH NORTHERN IRELAND					

Site Name	Area (ha)	Annex 1 Habitat Primary	Annex 1 Habitat Qualifying	Annex II Species Primary	Annex II Species Qualifying
Magilligan SAC	1058.22	Coastal dunes	Coastal dunes	N/A	Marsh fritillary butterfly <i>Euphydryas</i> (<i>Eurodryas</i> , <i>Hypodryas</i>) <i>aurina</i> Petalwort <i>Petalophyllum</i> <i>ralfsii</i>
Bann Estuary SAC	347.94	Coastal dunes	Salt marshes and salt meadows Coastal dunes	N/A	N/A
Raithlin Island SAC	3344.62	Reefs Sea cliffs Sea caves	Sandbanks Vegetation of drift lines	N/A	N/A
North Antrim Coast SAC	314.59	Sea cliffs	Vegetation of drift lines Salt marshes and salt meadows Coastal dunes Grasslands	Narrow-mouthed whorl snail <i>Vertigo angustior</i>	N/A
EAST NORTHERN IRELAND					
Strangford Lough SAC	15398.54	Mudflats and sandflats Coastal lagoons Inlets and bays Reefs	Vegetation of drift lines Vegetation of stony banks Salt marshes and salt meadows	N/A	Common seal <i>Phoca vitulina</i>
Murlough SAC	11902.03	Coastal dunes	Sandbanks Mudflats and sandflats Salt marshes and salt meadows Coastal dunes	Marsh fritillary butterfly <i>Euphydryas</i> (<i>Eurodryas</i> , <i>Hypodryas</i>) <i>aurina</i>	Common seal <i>Phoca vitulina</i>
SOUTHWEST SCOTLAND					
Lendalfoot Hills Complex SAC	1309.71	Grassland Fens	Heaths Grasslands Bogs	N/A	N/A

Site Name	Area (ha)	Annex 1 Habitat Primary	Annex 1 Habitat Qualifying	Annex II Species Primary	Annex II Species Qualifying
Mull of Galloway SAC	136.39	Sea cliffs	N/A	N/A	N/A
Luce Bay and Sands SAC	48759.28	Inlets and bays Coastal dunes	Sandbanks Mudflats and sandflats Reefs	N/A	Great crested newt <i>Triturus cristatus</i>
Solway Firth SAC	43636.72	Sandbanks Estuaries Mudflats and sandflats Salt marshes and salt meadows	Reefs Vegetation of stony banks Coastal dunes	Sea lamprey <i>Petromyzon marinus</i> River lamprey <i>Lampetra fluviatilis</i>	N/A
NORTHWEST ENGLAND					
Drigg Coast SAC	1397.44	Estuaries Coastal dunes	Mudflats and sandflats Salt marshes and salt meadows Coastal dunes	N/A	N/A
Morecambe Bay SAC	61506.22	Estuaries Mudflats and sandflats Inlets and bays Vegetation of stony banks Salt marshes and salt meadows Coastal dunes	Sandbanks Coastal lagoons Reefs Coastal dunes	Great crested newt <i>Triturus cristatus</i>	N/A
Sefton Coast SAC	4563.97	Coastal dunes	Coastal dunes	Petalwort <i>Petalophyllum ralfsii</i>	Great crested newt <i>Triturus cristatus</i>
Dee Estuary pSAC	14,000ha (approximately)		Estuary Mudflats and sandflats Saltmarshes and salt meadows, vegetation of drift lines		River lamprey <i>Lampetra fluviatilis</i> Sea lamprey <i>Petromyzon marinus</i>

Site Name	Area (ha)	Annex 1 Habitat Primary	Annex 1 Habitat Qualifying	Annex II Species Primary	Annex II Species Qualifying
River Dee and Bala Lake SAC	1308.93	Running freshwater	N/A	Atlantic salmon <i>Salmo salar</i> Floating water-plantain <i>Luronium natans</i>	Sea lamprey <i>Petromyzon marinus</i> Brook lamprey <i>Lampetra fluviatilis</i> River lamprey <i>Lampetra fluviatilis</i> Bullhead <i>Cottus gobio</i> Otter <i>Lutra lutra</i>
NORTH AND WEST WALES					
Great Orme's Head / Pen y Gogarth SAC	302.63	Heaths Grasslands	Sea cliffs	N/A	N/A
Menai Strait and Conwy Bay SAC	26482.67	Sandbanks Mudflats and sandflats Reefs	Inlets and bays Sea caves	N/A	N/A
Bae Cemlyn/Cemlyn Bay SAC	43.43	Coastal lagoons	Vegetation of stony banks	N/A	N/A
Glannau Ynys Gybi/Holy Island Coast SAC	464.27	Sea cliffs Heaths	Heaths	N/A	N/A
Glannau Môn: Cors heli/Anglesey Coast: Saltmarsh SAC	1058	Salt marshes and salt meadows	Estuaries Mudflats and sandflats	N/A	N/A
Y Twyni o Abermenai i AberffrawAbermenai to Aberffraw Dunes SAC	1871.03	Coastal dunes	Standing freshwater	Petalwort <i>Petalophyllum ralfsii</i> Shore dock <i>Rumex rupestris</i>	N/A
Clogwyni Pen Llyn/Seacliffs of Llyn SAC	1048.4	Sea cliffs	N/A	N/A	N/A
Pen Llyn a'r Sarnau/Llyn Peninsula and the Sarnau SAC	146023.48	Sandbanks Estuaries Coastal lagoons Inlets and bays Reefs	Mudflats and sandflats Salt marshes and salt meadows Sea caves	N/A	Bottlenose dolphin <i>Tursiops truncatus</i> Otter <i>Lutra lutra</i> Grey Seal <i>Halichoerus grypus</i>

Site Name	Area (ha)	Annex 1 Habitat Primary	Annex 1 Habitat Qualifying	Annex II Species Primary	Annex II Species Qualifying
Morfa Harlech a Morfa Dyffryn SAC	1062.57	Coastal dunes	N/A	Petalwort <i>Petalophyllum ralfsii</i>	N/A
Cors Fochno SAC	652.71	Bogs	Bogs	N/A	N/A
Cardigan Bay/Bae Ceredigion SAC	95860.36	N/A	Sandbanks Reefs Sea caves	Bottlenose dolphin <i>Tursiops truncatus</i>	Sea lamprey <i>Petromyzon marinus</i> River lamprey <i>Lampetra fluviatilis</i> Grey Seal <i>Halichoerus grypus</i>
St David's/Ty Ddewi SAC	935.47	Sea cliffs Heaths	N/A	Floating water-plantain <i>Luronium natans</i>	N/A
Pembrokeshire Marine/Sir Benfro Forol SAC	138069.45	Estuaries Inlets and bays Reefs	Sandbanks Mudflats and sandflats Lagoons Salt marshes and salt meadows Sea caves	Grey Seal <i>Halichoerus grypus</i> Shore dock <i>Rumex rupestris</i>	Sea lamprey <i>Petromyzon marinus</i> River lamprey <i>Lampetra fluviatilis</i> Allis shad <i>Alosa alosa</i> Twaite shad <i>Alosa fallax</i> Otter <i>Lutra lutra</i>

A12.b.3 Offshore Special Areas of Conservation

Figure A12.10 – Location of Offshore SACs in the Central North Sea

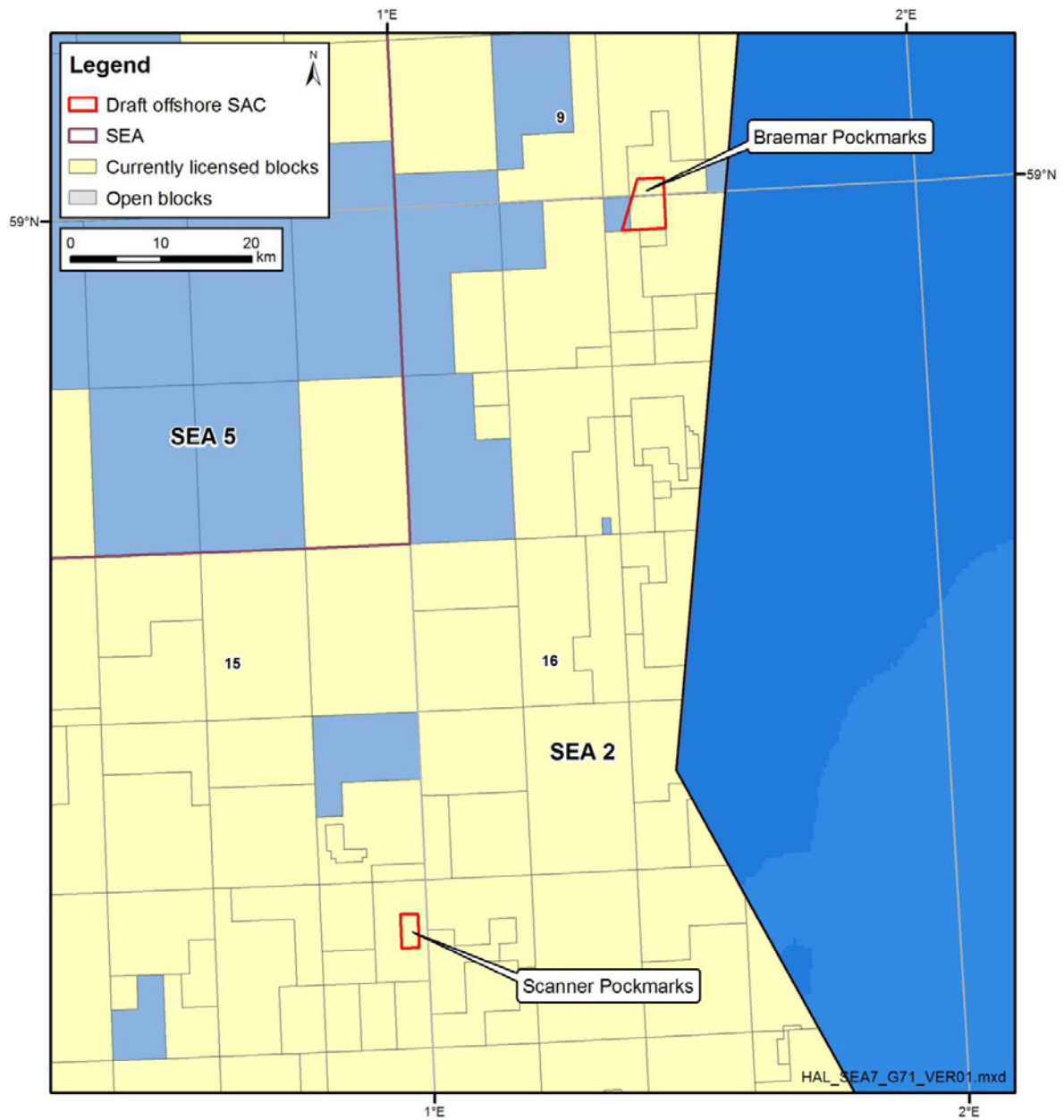


Figure A12.11 – Location of Offshore SACs in the Southern North SEA

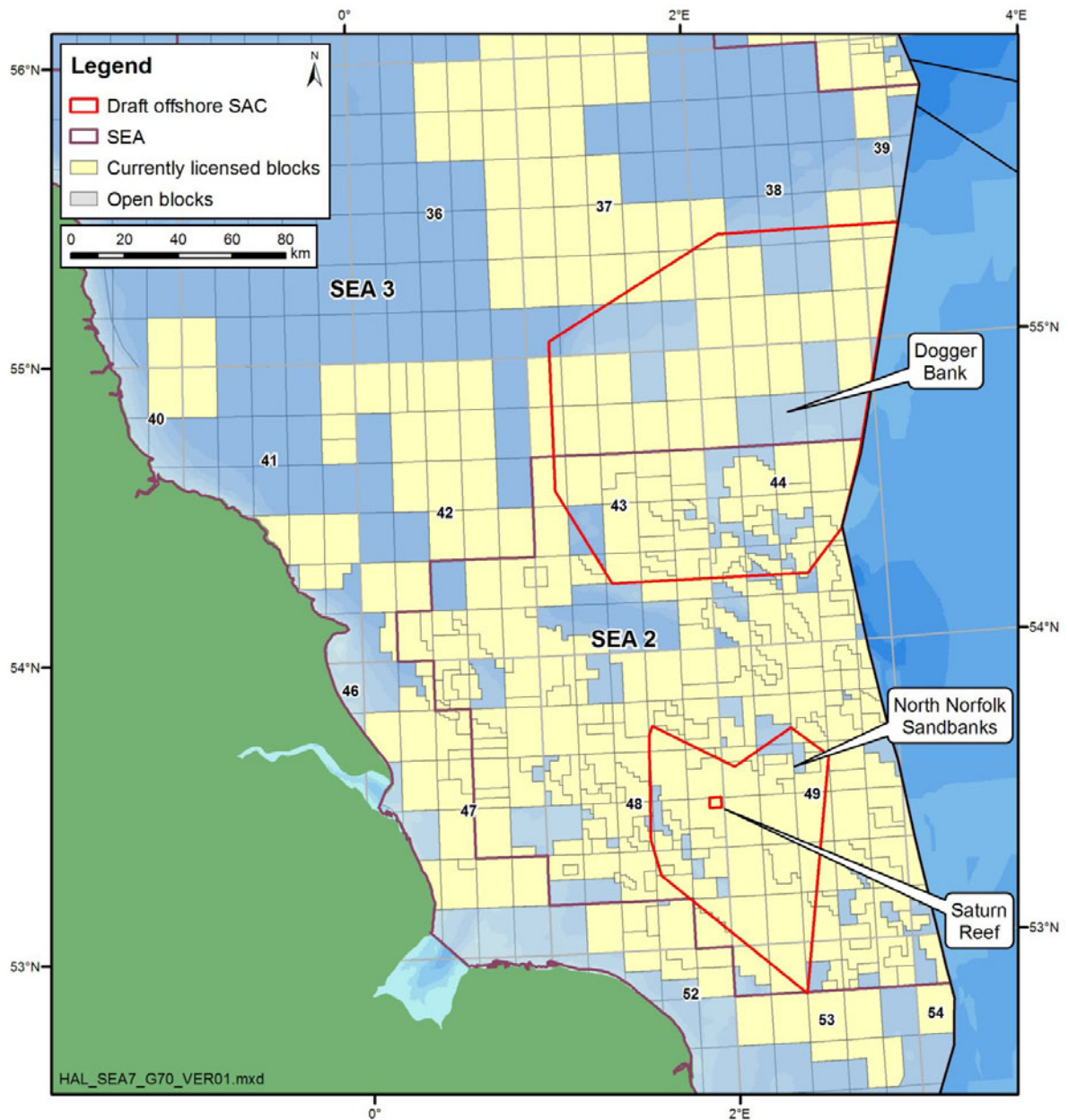


Figure A12.12 – Location of Offshore SACs the Wyville Thomson Ridge and Darwin Mounds

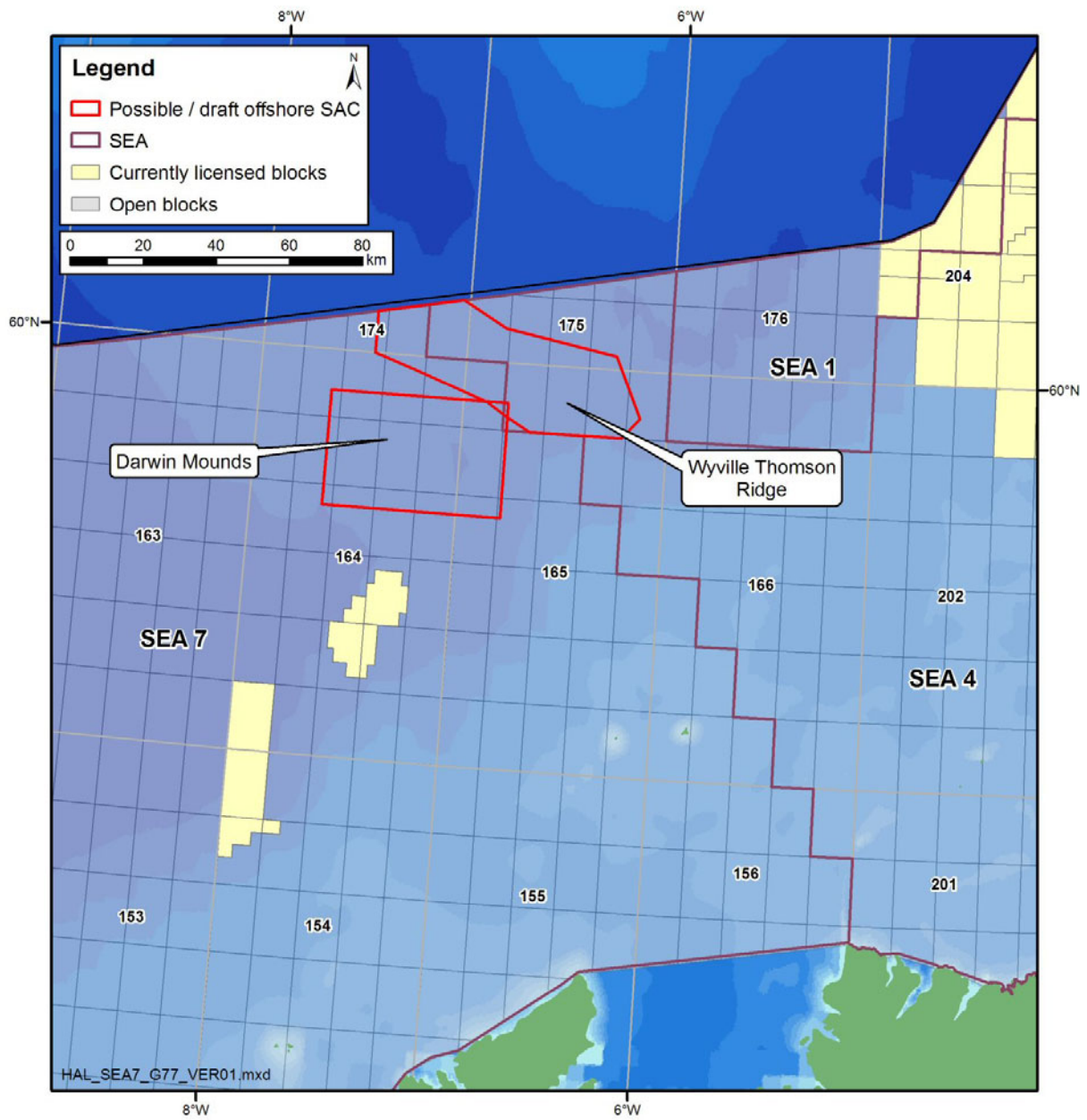


Figure A12.13 – Location of the Stanton Banks Offshore SAC

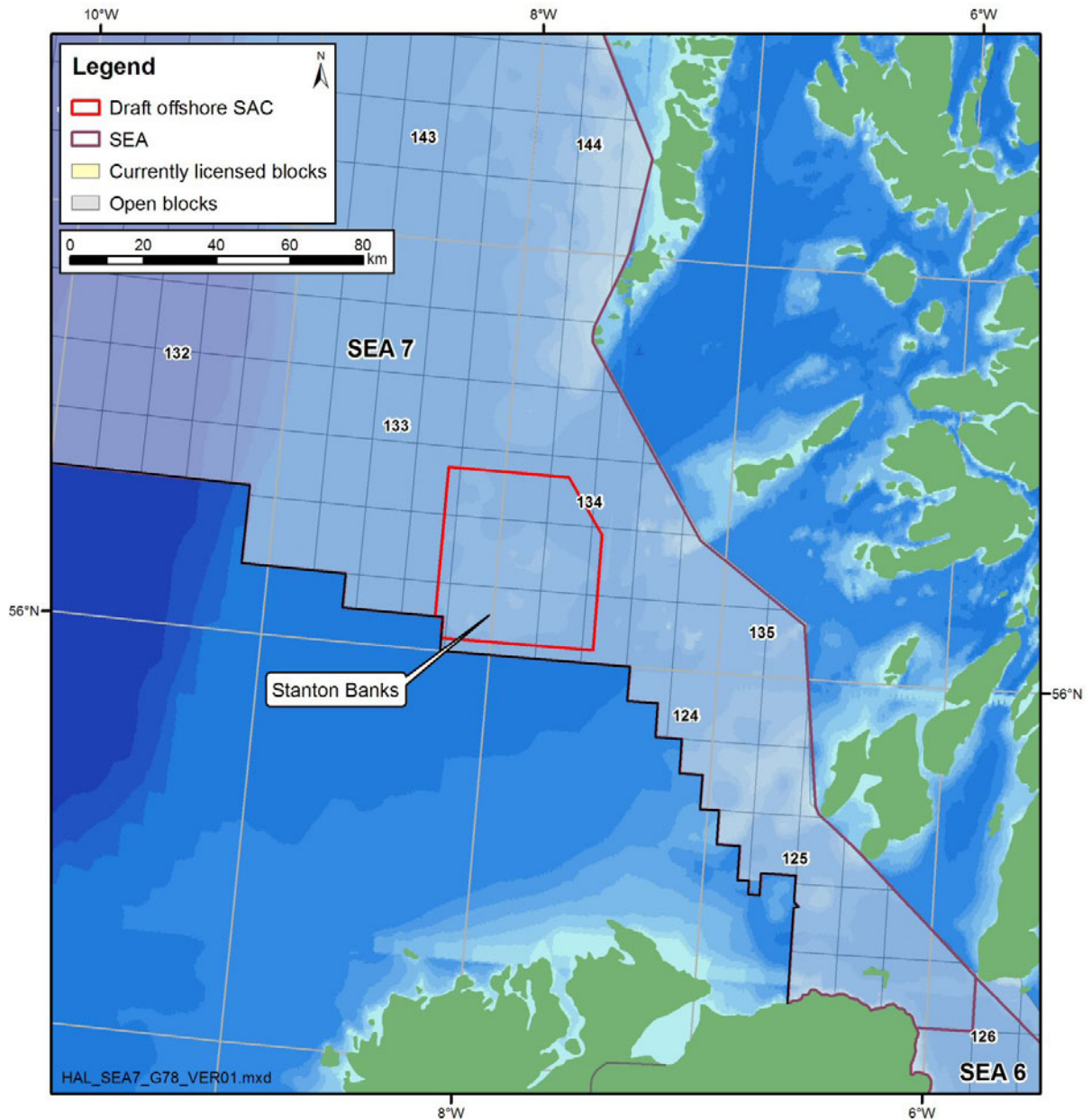


Table A12.5 – Offshore SACs and their Qualifying Features

Site Name	Area (ha)	Annex I Habitat Qualifying	Annex II Species Qualifying
Darwin Mounds pSAC	152900	Reefs (biogenic <i>Lophelia pertusa</i>)	N/A
Wyville Thompson Ridge dSAC	153324	Reefs	N/A
Stanton Banks dSAC	192380	Reefs	N/A
Braemar Pockmarks dSAC	2134	Submarine structures made by leaking gases	N/A
Scanner Pockmark dSAC	724.9	Submarine structures made by leaking gases	N/A

Site Name	Area (ha)	Annex I Habitat Qualifying	Annex II Species Qualifying
Dogger Bank dSAC	1340527	Sandbanks	N/A
North Norfolk Sandbanks and Saturn Reef dSAC	432651.4	Sandbanks Reefs (biogenic <i>Sabellaria spinulosa</i>)	N/A

In addition to the sites listed in Table A12.5, an area of reef (bedrock and stony), often referred to as the Irish Sea Mounds, has been identified in the northwest Irish Sea. The potential conservation value of this site has been acknowledged by the JNCC (Johnston *et al.* 2004a), however, a proposed area for SAC designation has not yet been submitted.

A12.b.4 Annex 1 Habitat Abbreviations Used in Site Summaries

Annex I Habitat (abbreviated)	Annex I Habitat(s) (full description)
Bogs	Active raised bogs * Priority feature Blanket bogs * Priority feature Degraded raised bogs still capable of natural regeneration Depressions on peat substrates of the <i>Rhynchosporion</i> Transition mires and quaking bogs
Coastal dunes	Atlantic decalcified fixed dunes (<i>Calluno-Ulicetea</i>) Coastal dunes with <i>Juniperus</i> spp. Decalcified fixed dunes with <i>Empetrum nigrum</i> Dunes with <i>Hippophae rhamnoides</i> Dunes with <i>Salix repens</i> ssp. <i>argentea</i> (<i>Salicion arenariae</i>) Embryonic shifting dunes Fixed dunes with herbaceous vegetation ('grey dunes') * Priority feature Humid dune slacks Shifting dunes along the shoreline with <i>Ammophila arenaria</i> ('white dunes')
Coastal lagoons	Coastal lagoons * Priority feature
Estuaries	Estuaries
Fens	Alkaline fens Calcareous fens with <i>Cladium mariscus</i> and species of the <i>Caricion davallianae</i> * Priority feature Petrifying springs with tufa formation (<i>Cratoneurion</i>) * Priority feature
Forest	Alluvial forests with <i>Alnus glutinosa</i> and <i>Fraxinus excelsior</i> (<i>Alno-Padion</i> , <i>Alnion incanae</i> , <i>Salicion albae</i>) * Priority feature <i>Tilio-Acerion</i> forests of slopes, screes and ravines * Priority feature Old sessile oak woods with <i>Quercus robur</i> on sandy plains Old sessile oak woods with <i>Ilex</i> and <i>Blechnum</i> in the British Isles

Annex I Habitat (abbreviated)	Annex I Habitat(s) (full description)
Grasslands	Alpine and subalpine calcareous grasslands <i>Calaminarian</i> grasslands of the <i>Violetalia calaminariae</i> Hydrophilous tall herb fringe communities of plains and of the montane to alpine levels <i>Molinia</i> meadows on calcareous, peaty or clayey-silt-laden soils (<i>Molinion caeruleae</i>) Semi-natural dry grasslands and scrubland facies: on calcareous substrates (<i>Festuco-Brometalia</i>) (important orchid sites) * Priority feature Species-rich <i>Nardus</i> grassland, on siliceous substrates in mountain areas (and submountain areas in continental Europe) * Priority feature
Heaths	Alpine and Boreal heaths European dry heaths Northern Atlantic wet heaths with <i>Erica tetralix</i>
Inlets and bays	Large shallow inlets and bays
Limestone pavements	Limestone pavements * Priority feature
Machairs	Machairs
Mudflats and sandflats	Mudflats and sandflats not covered by seawater at low tide
Reefs	Reefs
Rocky slopes	Calcareous rocky slopes with chasmophytic vegetation Siliceous rocky slopes with chasmophytic vegetation
Running freshwater	Water courses of plain to montane levels with the <i>Ranunculion fluitantis</i> and <i>Callitriche-Batrachion</i> vegetation
Salt marshes and salt meadows	Atlantic salt meadows (<i>Glaucopuccinellietalia maritimae</i>) Mediterranean and thermo-Atlantic halophilous scrubs (<i>Sarcocornetea fruticosi</i>) Salicornia and other annuals colonising mud and sand Spartina swards (<i>Spartinion maritimae</i>)
Sandbanks	Sandbanks which are slightly covered by sea water all the time
Scree	Calcareous and calcshist scree of the montane to alpine levels (<i>Thlaspietea rotundifolii</i>) Siliceous scree of the montane to snow levels (<i>Androsacetalia alpinae</i> and <i>Galeopsietalia ladani</i>)
Scrub (mattoral)	<i>Juniperus communis</i> formations on heaths or calcareous grasslands
Sea caves	Submerged or partially submerged sea caves
Sea cliffs	Vegetated sea cliffs of the Atlantic and Baltic coasts

Annex I Habitat (abbreviated)	Annex I Habitat(s) (full description)
Standing freshwater	<p>Hard oligo-mesotrophic waters with benthic vegetation of <i>Chara</i> spp.</p> <p>Natural dystrophic lakes and ponds</p> <p>Natural eutrophic lakes with <i>Magnopotamion</i> or <i>Hydrocharition</i>-type vegetation</p> <p>Oligotrophic to mesotrophic standing waters with vegetation of the <i>Littorelletea uniflorae</i> and/or of the <i>Isoëto-Nanojuncetea</i></p>
Vegetation of drift lines	Annual vegetation of drift lines
Vegetation of stony banks	Perennial vegetation of stony banks