



Getting into jobs and getting on: Helping disabled people who want to work

What the government says

March 2012



Easy Read

DWP

Department for
Work and Pensions

Important

Green writing

In this easy-read booklet we sometimes explain what words mean.

The first time we mention any of these words, it is in **bold green** writing. Then we write what the words mean in a **light blue** box. If any of the words are used later in the booklet, we show them in **normal green** writing.

These words and what they mean are also in a word list at the back of the booklet.

The CDS Easy Read illustrations we develop are intended specifically for use in this publication. The Department for Work and Pensions has the right to share, send, print and distribute this product in its current format. The images within this product should not be copied from this document and used for other purposes or passed on to a third party. Do not extract, modify, adapt, alter, or otherwise attempt to change the illustrations for other purposes without written permission from CDS.

CDS, 7 Eastgate, Leeds LS2 7LY
Tel: 0113 399 4000
Web: www.cds.co.uk/clarity

Contents

What this booklet is about 4

What the government says 7

Word list12

What this booklet is about

The government thinks that for people to do the best they can in their life, it helps if they have a job. Being disabled should not be a **barrier** to getting a job.

Barriers

These are things that stop disabled people living like other people. For example, the ways other people think and act towards disabled people.



In December 2010 we started to look at the **support** that is given to disabled people who want to work. This was called a review.

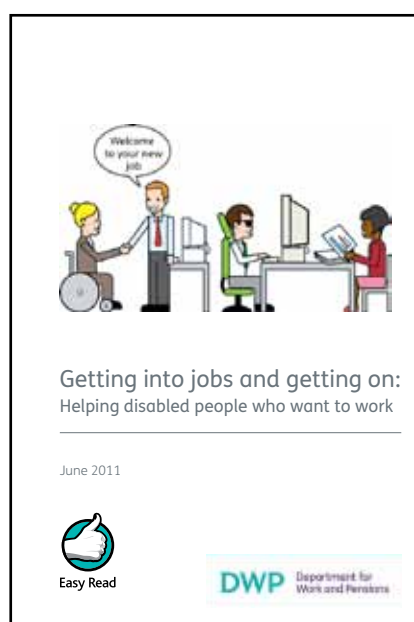
Support

This is the help disabled people get from the government so that they can work. It may be something like help with travelling to work, such as the cost of getting there by taxi, or it may be something like a support worker or a computer.

The review was led by Liz Sayce who is the Chief Executive of RADAR, which is a disability organisation.

This review was called the Sayce review.

Liz wrote a report called Getting in, staying in and getting on. There was also a booklet in easy to read words called Getting into jobs and getting on: Helping disabled people who want to work.

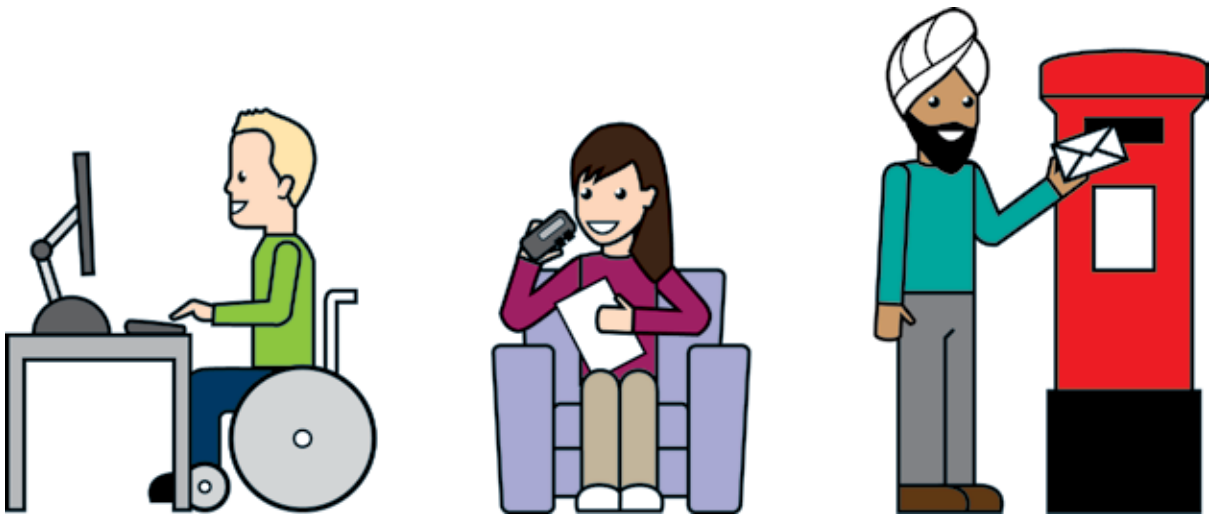


We had a **consultation** about the report that ran from July 2011 until October 2011.

Consultation

This is when the government asks what people think.

We had replies about the **consultation** from many people and groups, like disabled people, disabled people's groups and other organisations.



What the government says

The government agrees with what Liz Sayce said. Liz said that money should be used to help disabled people find the work they want to do. This should be done instead of the money going to separate places where disabled people work or train.

The government says that disabled people should have more choice and control over the employment services they use.

Maria Miller, who is the Minister for Disabled People, has said often that the money that is set aside to help disabled people find work is safe.

The government wants to help more disabled people into work than ever before.



Helping disabled people who want to work

The government has said that it will do what Liz Sayce said about **Remploy**.

Remploy

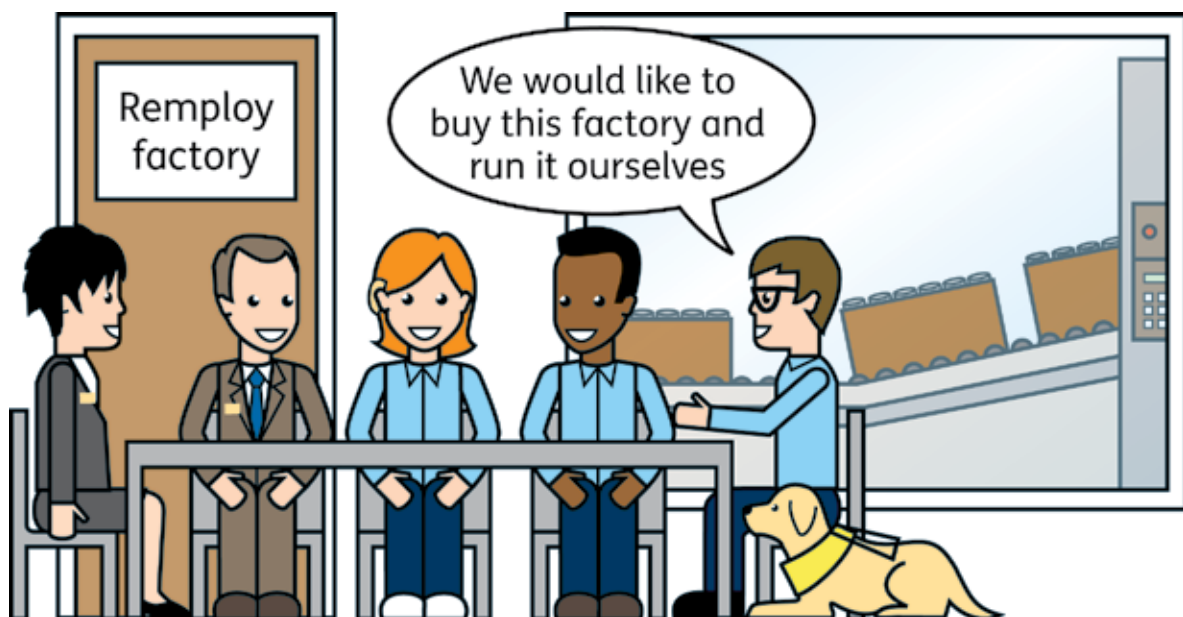
Remploy helps disabled people find work. It also gives jobs to disabled people in factories.

Changes to **Remploy** mean that some factories that are losing a lot of money may have to close. Some other factories and offices may stop getting money from the government, but they will carry on working.

Remploy will start to talk to **trade unions** and people who work at **Remploy** about this.

Trade unions

In this booklet, **trade unions** are groups that look after the needs of workers.



If any people lose their jobs they will get help to find a new job.

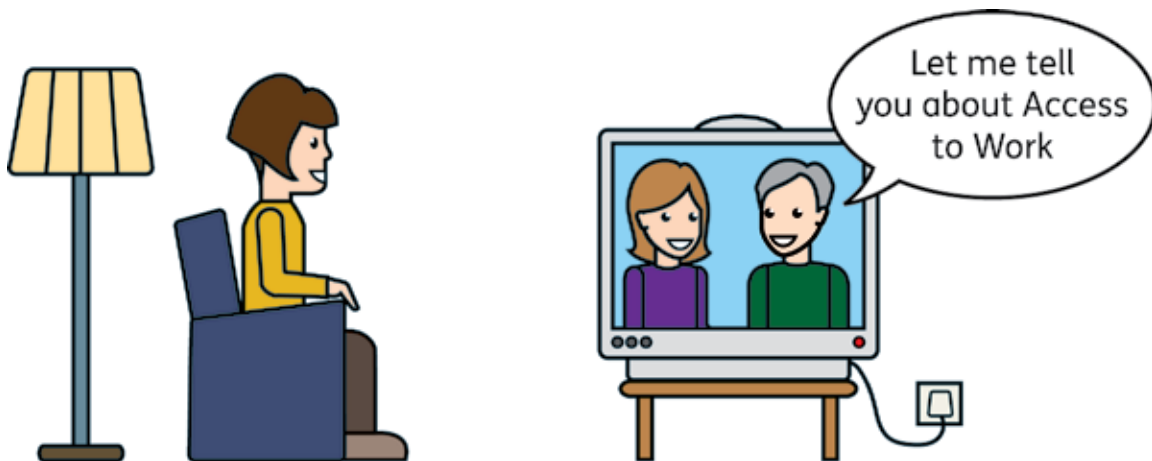
If any of the **Remploy** factories are closed, the government will be able to put more money into programmes like **Access to Work**. This will mean that more disabled people will be helped to find jobs and stay in work.

Access to Work

Access to Work gives advice and support to people whose disability or health problem affects how they do their work.

Access to Work can help pay for a support worker, or the extra costs a disabled person might have in travelling to and from work. It can also help pay for things like special computers a disabled person might need to help them do their job.

The government will try to get more people to use the **Access to Work** programme.



Helping disabled people who want to work

The government will do this by getting in touch with these groups of people.

- Employers who do not have a lot of people working for them.
- Young people who are leaving education and looking for work.

This will make sure that more people know about the help they can get.

The government will look for better ways to pay for **Residential Training Colleges**. The government will also look for better ways to use **Residential Training Colleges**.

Residential Training Colleges

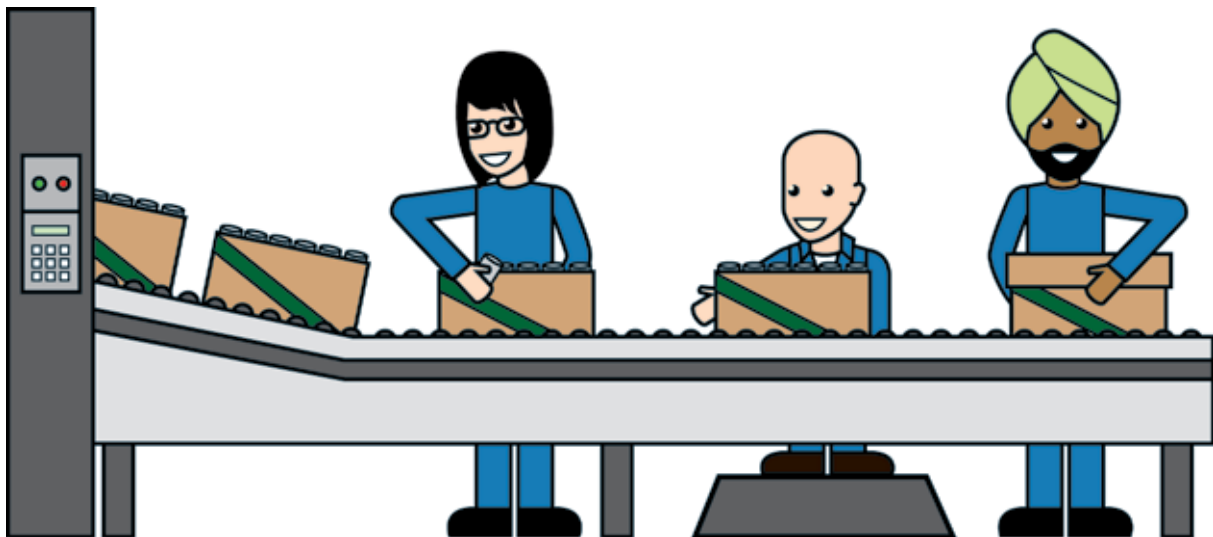
These are places where people stay for up to 1 year to learn new skills to help them get a job. The **Residential Training College** takes care of the training, somewhere to stay and all food.



The Department for Work and Pensions will keep paying for **Residential Training College** courses until the end of August 2013.

The government will set up a system of support to help disabled people look for and find a job. The government hopes that this new system will meet the hopes and needs of disabled people.

We look forward to the support of disabled people as we do these things.



Word list

Access to Work

Access to Work gives advice and support to people whose disability or health problem affects how they do their work.

Access to Work can help pay for a support worker, or the extra costs a disabled person might have in travelling to and from work. It can also help pay for things like special computers a disabled person might need to help them do their job9

Barriers

These are things that stop disabled people living like other people. For example, the ways other people think and act towards disabled people.4

Consultation

This is when the government asks what people think.....6

Remploy

Remploy helps disabled people find work. It also gives jobs to disabled people in factories.....8

Residential Training Colleges

These are places where people stay for up to 1 year to learn new skills to help them get a job. The **Residential Training College** takes care of the training, somewhere to stay and all food..... 10

Support

This is the help disabled people get from the government so that they can work. It may be something like help with travelling to work, such as the cost of getting there by taxi, or it may be something like a support worker or a computer.....5

Trade unions

In this booklet, **trade unions** are groups that look after the needs of workers8

© Crown copyright 2011

You may use the words in this booklet in any way you want to as long as you make sure you use them correctly.

The Open Government Licence covers the use of the words. The only thing you cannot use are the logos.

If you want to know a bit more about the Open Government Licence or if you need some help to understand what we have said, the website which tells you more about the Open Government Licence is

www.nationalarchives.gov.uk/doc/open-government-licence

Or you can write to

The National Archives
Kew
London
TW9 4DU

Or email your questions to

psi@nationalarchives.gsi.gov.uk

If you want to read a copy of this booklet online you can find it at www.dwp.gov.uk/sayce-consultation

If you want the full report written in English, you can buy it at TSO bookshops. TSO is sometimes called The Stationery Office. You can also get the full report in English free at

www.dwp.gov.uk/consultations/2011/specialist-disability-emp-prog.shtml

Copies of the full report can be made available in other formats on request. Contact details below.

Disability and Work Opportunities Division
Department for Work and Pensions
Ground Floor
Caxton House
Tothill Street
London
SW1H 9NA

Telephone: 020 7449 7817

Email: sdep.signpost@dwp.gsi.gov.uk

Please contact us if you have any other problems getting this report.

ISBN: 978-1-84947-986-8

© Crown Copyright 2012

Published by the Department for Work and Pensions

March 2012