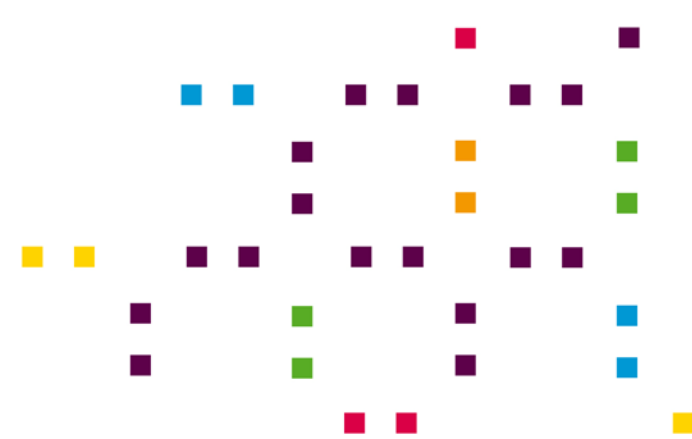


CASE & Taking Part

Adam C. Cooper, Evidence & Analysis Unit

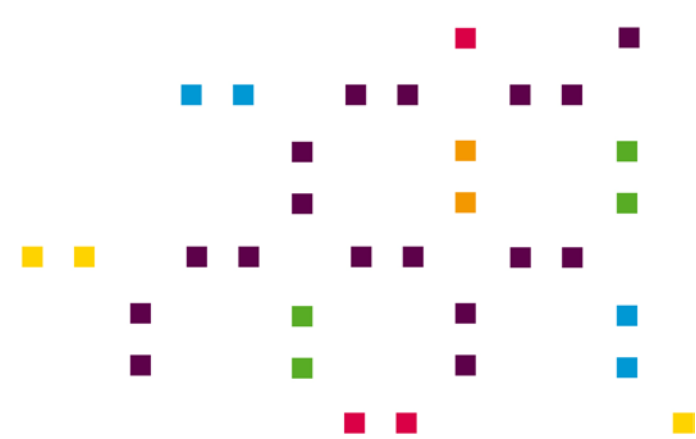


What is CASE?



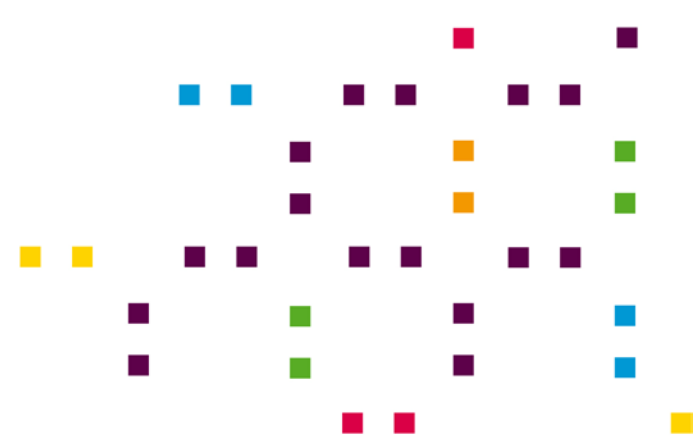
- Cross-cutting research programme
- Fundamental analysis for policy
- Multi-disciplinary
- Builds on Taking Part data

CASE & Taking Part



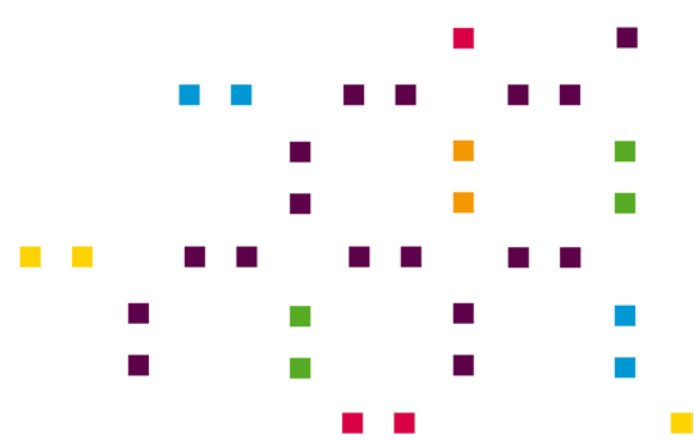
- What we used
 - Definitions & Questions
 - Data
- Where we used it
 - Drivers, Impact and Value project
 - Understanding Society

Where we used Taking Part



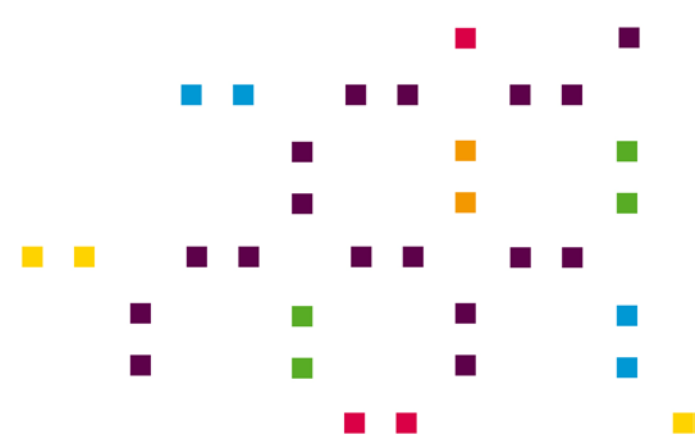
- Drivers, Impact and Value project
 - Drivers: **regression** and **system dynamics** model
 - Value: **decision modelling** health costs avoided
- What for?
 - Policy appraisal
 - Improve policy research

Drivers – regression model



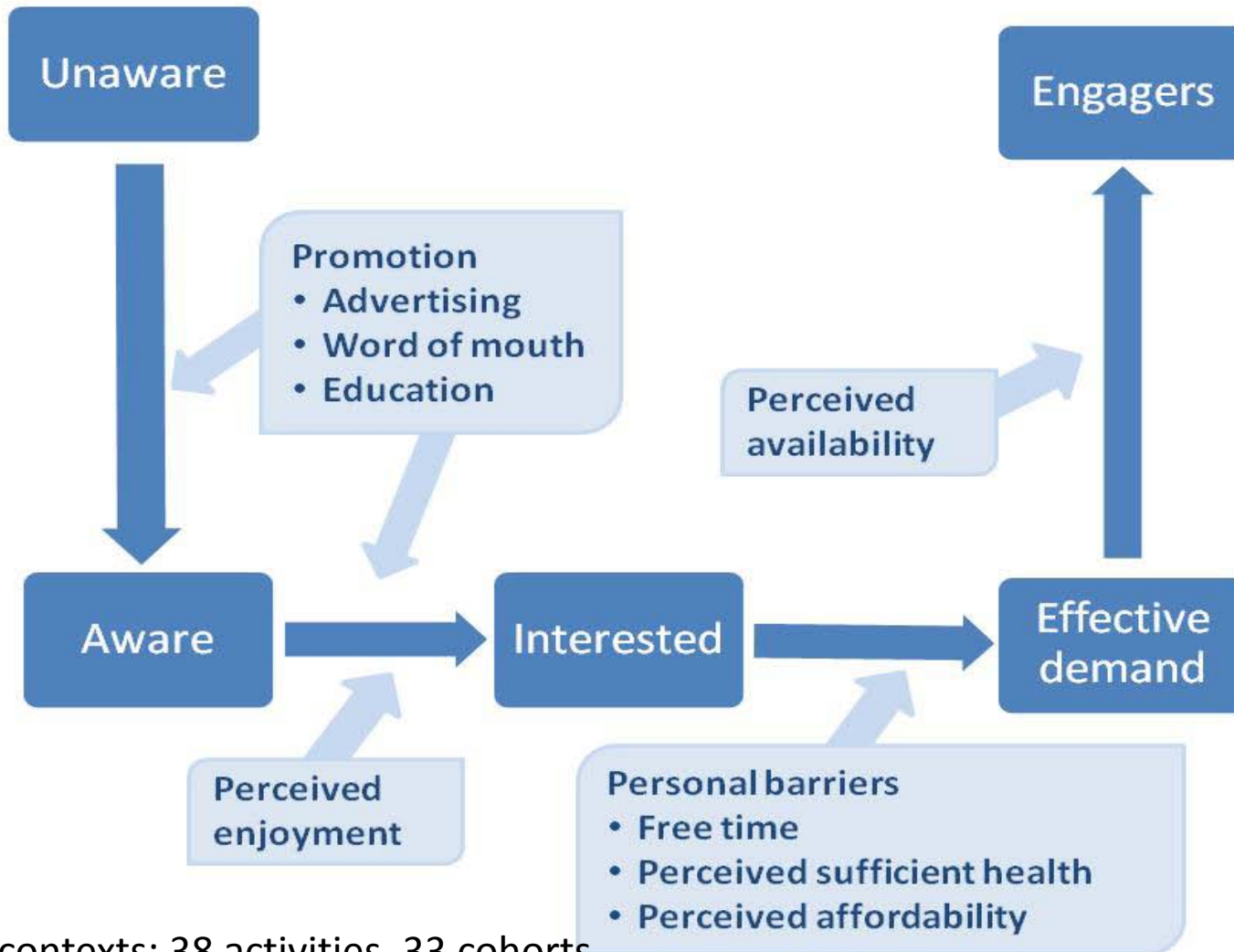
- Multivariate modelling
- Theory-driven
- Incorporated local area data:
 - Asset data (museums, libraries, heritage & sport facilities)
 - National indicator data

System dynamics model



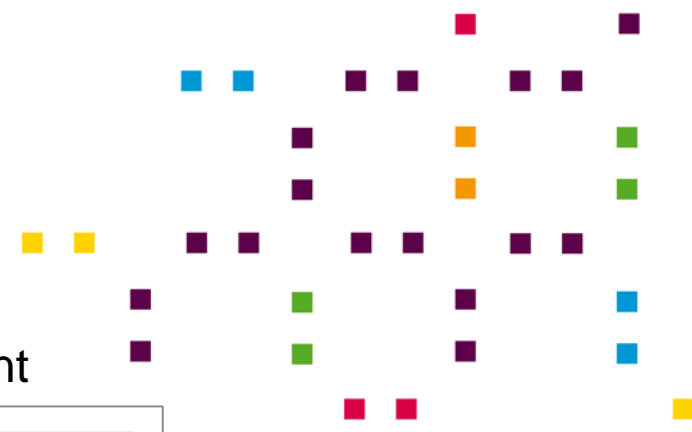
- **Theory driven**
It's "an approach to understanding the
- **Numerical model of engagement**
behaviour of complex systems over time.
- **Very dependent on Taking Part**
- **Gaps**
It deals with internal feedback loops and
time delays that affect the behaviour of
the entire system"

System dynamics: model structure

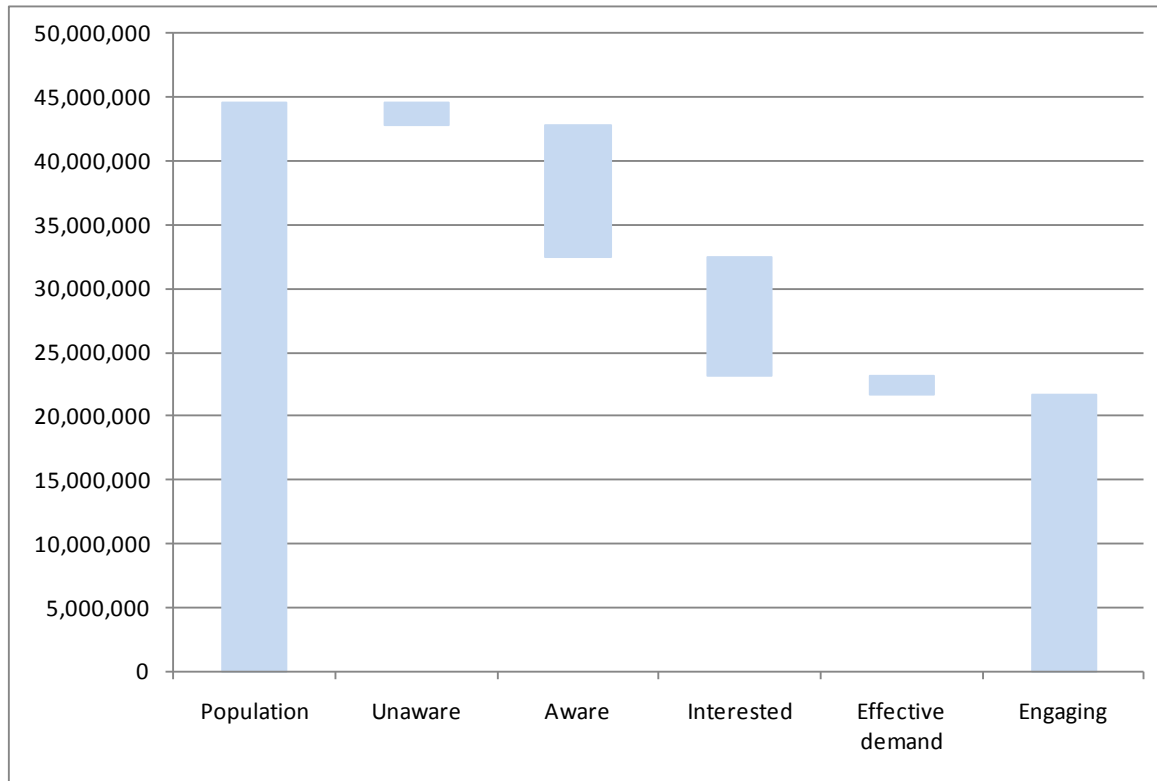


1,254 contexts: 38 activities, 33 cohorts

System dynamics: stocks

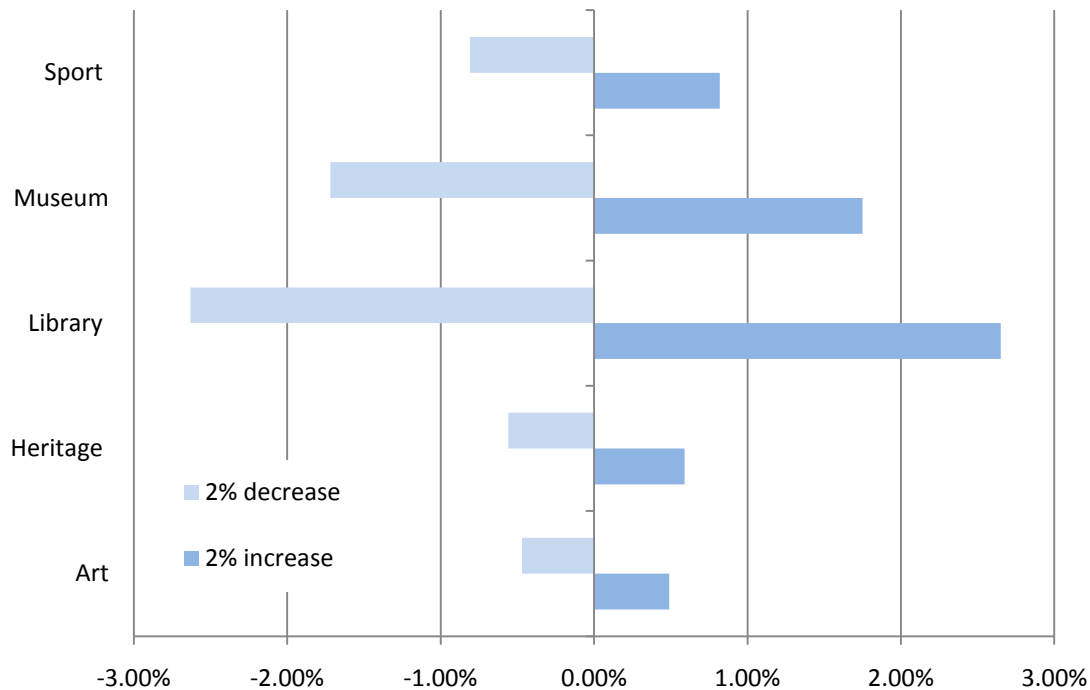


Population stocks for attendance of an art event

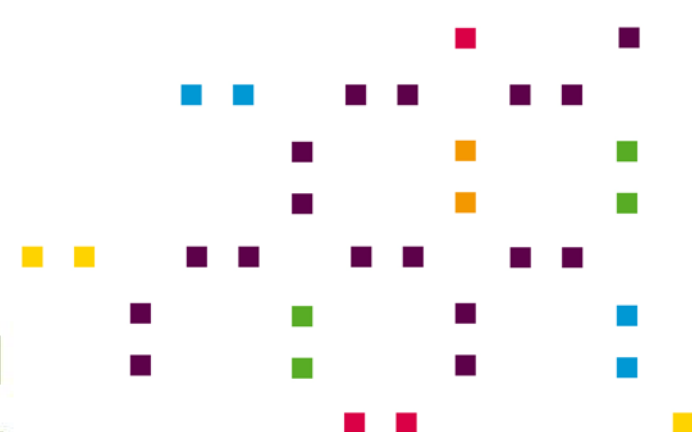
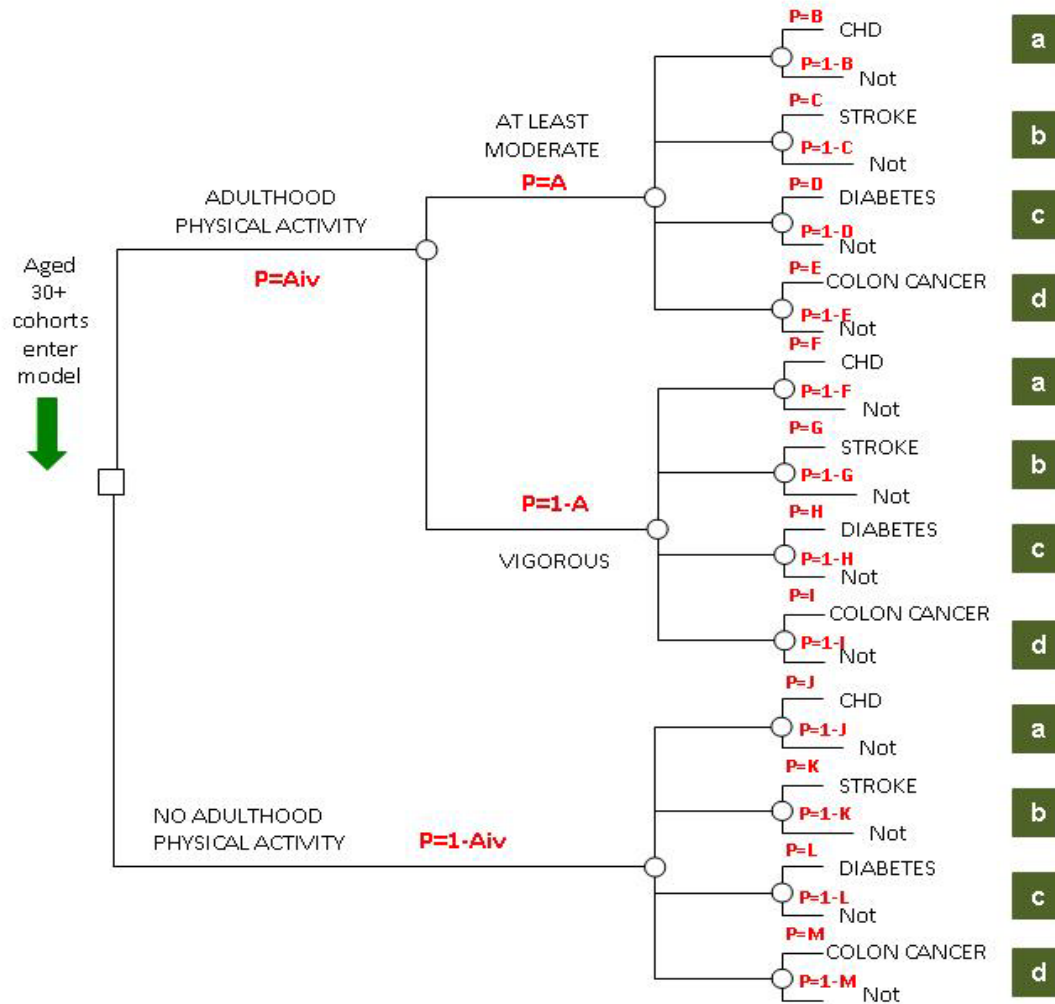


System dynamics: modelling policy

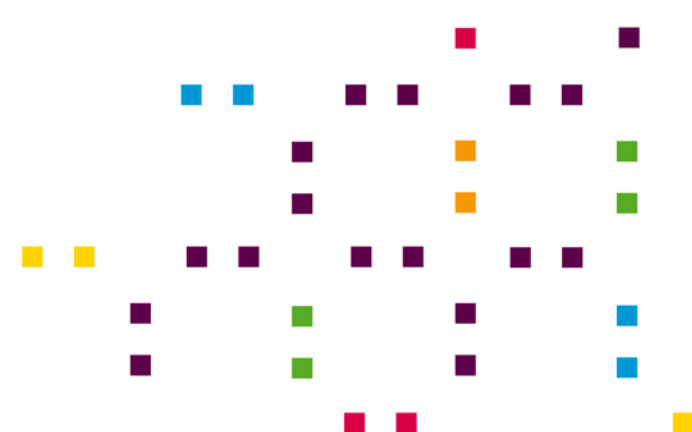
The impact of improved quality of experience on engagement levels
(percentage change relative to baseline)



Decision modelling health



Understanding Society



- TP-style questions
- Tested in an omnibus
- Shorter to ask
- Consistent



Providing new insights into our lives

Design

Results

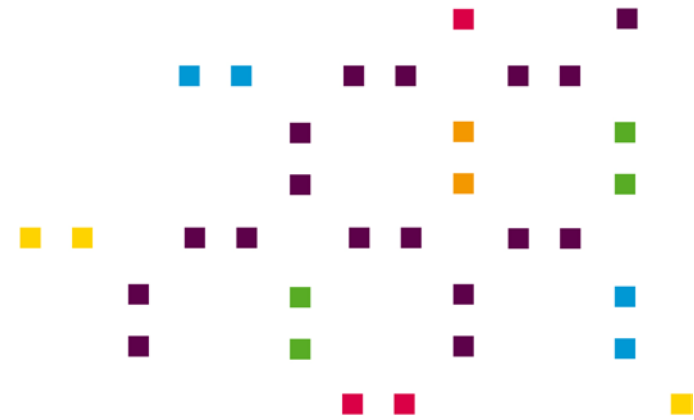
Research Findings

News

Contacts

A quality study

Contact & further info



www.culture.gov.uk/case

adamc.cooper@culture.gsi.gov.uk