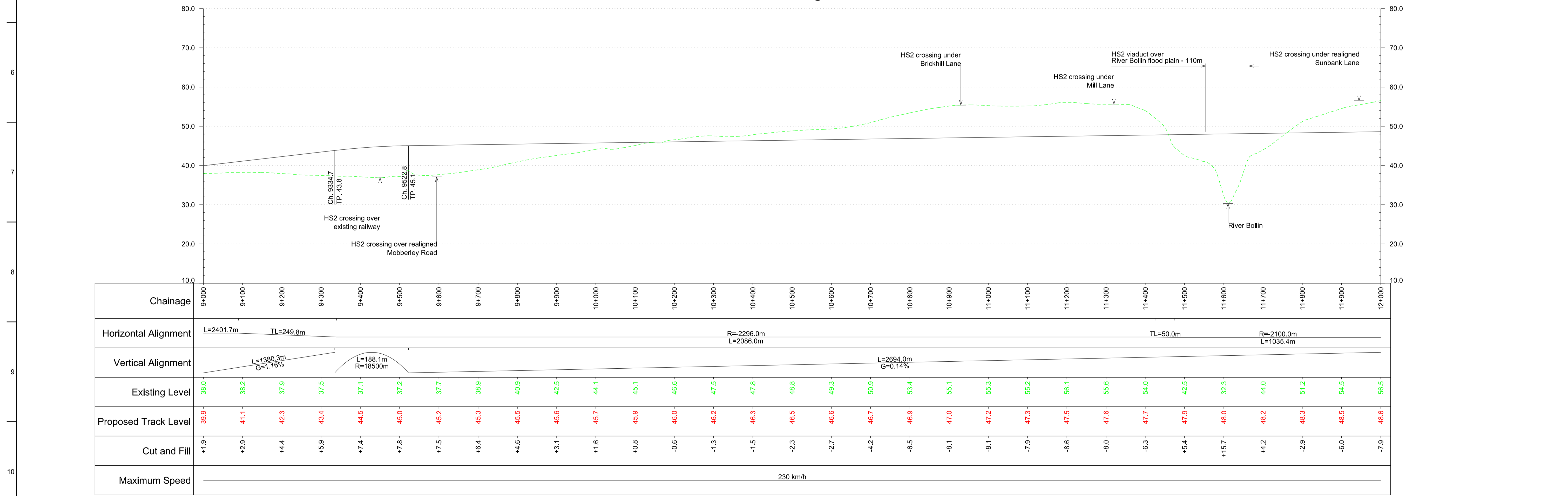


Plan
Scale 1:5,000 @ A1



Profile
Scale H:1:5,000 V:1:500 @ A1

© Crown copyright and database rights 2012 Ordnance Survey 100049190.

Key Environmental Features Legend

- World Heritage Site
- Ramsar
- Special Areas of Conservation
- Special Protection Areas
- SSSI
- National Nature Reserves
- Area of Outstanding Natural Beauty
- National Park
- Scheduled Monuments
- Registered Parks and Gardens
- Historical Battlefields
- Active and/or Authorised Landfill
- Historical Landfill
- Flood Zone 3

Legend

- Alignment Centreline
- Viaduct / Tunnel / Fully Retained Cutting
- Major Contour
- Minor Contour
- Node
- Retained structures will be used at depths of 15m or greater
- Railway Cutting
- Railway Embankment
- Highway Cutting
- Highway Embankment

Issue	Date	By	Chkd	Appd
P6	23.11.12	JFF	RC	TW
P5	16.11.12	JA	RC	TW
P4	30.10.12	JFF	RC	TW
P3	19.10.12	JA	RC	TW
P2	31.08.12	MM	RC	TW
P1	20.03.12	MM	RC	TW

Client: **hs2**

Job Title: **HS2 West Midlands to Manchester Initial Preferred Route December 2012**

Scale at A1: **1:5000**

Discipline: **Rail**

Drawing Title: **Route HSM28 Plan and Profile Sheet 4 of 9**

Drawing Status: **-**

Drawing No: **HS2-MSG-MA0-ZZ-DR-RT-52804**

Job No: **277592**

Issue: **P6**

MSG
MOTT MACDONALD SCOTT WILSON GRIMSHAW