

Department for Environment, Food and Rural Affairs

Marine Conservation Zones: Consultation on proposals for designation in 2013

Annex A1 – Part 4. - Irish Sea Conservation Zones - Sites proposed for designation in 2013

Defra is proposing that up to 31 sites are good candidates for designation in 2013. Site specific information for each site is set out below. An explanatory note for the site summaries is included in Annex B.

Further Information

SNCB Advice

The SNCB advice can be found at: <http://publications.naturalengland.org.uk/category/1723382>

For specific site information please go to the page stated in the site summary.

For information on data certainty see section 5 of the SNCB advice and for advice on certainty of conservation objectives please see SNCB – supplementary advice and information at: <http://publications.naturalengland.org.uk/category/1725455>

Impact Assessment

For additional information on the Consultation Impact Assessment please use the following link:

www.defra.gov.uk/environment/marine/protect/mpa/mcz/

Within this link there are a series of documents including the Consultation Impact Assessment and supporting Annexes. For site specific information please open the section state in the individual site summary (Example: Chesil Beach and Stennis Ledges – Annex I2 Option 2 Page 3)

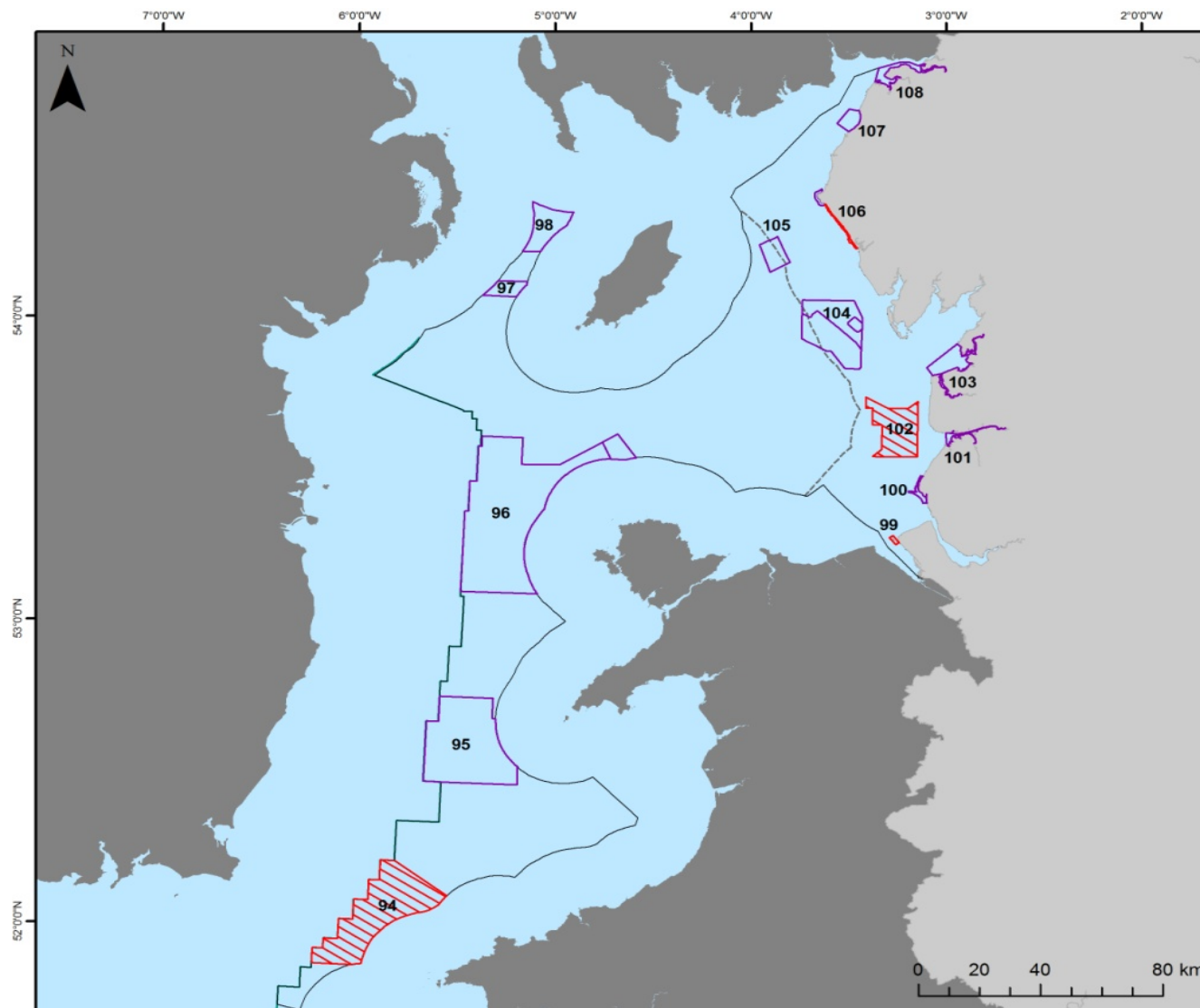
Irish Sea Conservation Zones

For additional information on the proposed first tranche sites in Irish Sea Conservation Zones please use the following link -


<http://publications.naturalengland.org.uk/publication/1562384>

Within this link there are a series of documents providing additional information on the Irish Sea Conservation Zone recommended sites. For site specific information please open see ISCZ –pMCZ Final Recommendations Pt.3.1 (Example: Ribble Estuary - ISCZ – pMCZ Final Recommendations Pt.3.1 Page 264)

Regional MCZ Map – Irish Seas (ISCZ)



Sites overview

-  rMCZs put forward for designation in 2013
-  Recommended MCZ
-  ISCZ regional project area
-  12nM Territorial Seas Limit
-  UK Continental Shelf designated area

Contains information from the Ordnance Survey
 © Crown Copyright and database right 2012.
 Ordnance Survey 100022021. UKHO Data
 © British Crown Copyright. All rights reserved.
 Permission Number Defra012012.001. This
 product has been derived in part from material
 obtained from the UK Hydrographic Office with
 the permission of the Controller of Her Majesty's
 Stationery Office and UK Hydrographic Office
 (www.ukho.gov.uk). Map produced by
 Natural England/JNCC 2012. The exact limits of
 the UK Continental Shelf designated area (UKCS)
 are set out in orders under section 1(7) of the
 Continental Shelf Act 1964. The regional MCZ
 project area follows the UKCS in English waters.
 Map Projection: BNG

Map Label	Site Name	Regional Project Number	Map Label	Site Name	Regional Project Number
94	North of Celtic Deep	5	102	Fylde Offshore	8
95	Mid St George's Channel	4	103	Wyre-Lune	N/A
96	North St George's Channel	3	104	West of Walney	2
97	Slieve Na Griddle	7	105	Mud Hole	1
98	South Rigg	6	106	Cumbria Coast	11
99	Hilbre Island Group	14	107	Allonby Bay	10
100	Sefton Coast	13	108	Solway Firth	N/A
101	Ribble Estuary	N/A			

Consultation Site Summary: Cumbria Coast

Additional information for this site can be found in the SNCB Advice (page 1044), Impact Assessment (Annex I2 Option 2, Page 467) and Regional Project recommendations (ISCZ –pMCZ Final Recommendations Pt.3.1, Page 202).

Table 1. General Information on site and all features recommended by Regional Projects

Regional Project: Irish Sea Conservation Zones		Site surface area: 17 km ²	Biogeographic Region: JNCC regional sea: Irish Sea. OSPAR region III: Celtic Seas.
Site Location: 54° 27' 27.471" N, 3° 34' 12.062" W 54.45763 Lat, -3.570017 Long. Lambert Azimuthal Equal Area projection, ETRS89 datum Inshore/Offshore: Inshore			
Feature type	Feature name	Area/no. of records	Conservation Objective – activity causing pressure
Broad Scale Habitat	High energy intertidal rock	0.04 km ²	Maintain
Broad Scale Habitat	Intertidal sand and muddy sand	5 km ²	Maintain
Broad Scale Habitat	Intertidal biogenic reefs	1 km ²	Recover

Broad Scale Habitat	High energy infralittoral rock	1 km ²	Recover
Habitat FOCI	Blue mussel (<i>Mytilus edulis</i>) beds	2	Maintain
Habitat FOCI	Intertidal underboulder communities	8	Maintain
Habitat FOCI	Peat and clay exposures	2	Maintain
Habitat FOCI	Honeycomb worm (<i>Sabellaria alveolata</i>) reefs	1 km ²	Recover
Other feature	Black guillemot (<i>Cephus grille</i>)	50 pairs	Recover ¹

Table 2. Sector Impacts and Associated Best Estimate Costs

Sectors Impacted	Best Estimate Costs (£ per year)
Commercial Fishing	2,000
Ports, Harbours and Commercial Shipping	1000
National Defence	Non site specific cost
Archaeology	Unquantified
Flood and Coastal Erosion Risk Management	Unquantified
	Best Estimate Total Cost = £3,000

¹ Following advice from the SNCBs, the conservation Objective for this feature has changed from the original Regional Project recommendation.

Table 3. Designation Status of Site and Rationale

Decision	Designation in 2013 tranche
<p>Rationale for Decision:</p> <p>Site advantages</p> <p>The Cumbria Coast recommended MCZ is an inshore site measuring 17 km². Within this rMCZ there are a variety of features including four Broad Scale Habitats, four Habitat FOCI and one Species FOCI. Of particular interest within this site are; High energy intertidal rock as there are only two replicates for this habitat within the Irish Sea project area; Intertidal biogenic reefs and Honeycomb worm (<i>Sabellaria alveolata</i>) reefs as the Cumbrian coast has some of the most extensive and best represented examples of this feature in the UK; High energy infralittoral rock as replication is at its minimum for this feature; Intertidal underboulder communities as this is one of the best examples of underboulder shores in this region; black guillemot (<i>Cepphus grille</i>) as this is the only area known for breeding in Britain. Natural England have advised that this site is vulnerable and therefore at higher risk of damage or disturbance because it contains highly sensitive features (Honeycomb Worm (<i>Sabellaria alveolata</i>) Reefs) and is subject to one or more pressures.</p> <p>Socio-Economics</p> <p>The main sector impacted by Cumbria Coast recommended MCZ is the Commercial Fishing sector. For this sector there is a best estimate cost of £2,000 associated with the closure of areas of High energy circalittoral rock to pots and traps only, and the closure of areas of Biogenic reefs, Honeycomb worm (<i>Sabellaria alveolata</i>) reefs, Peat and clay exposures and Blue mussel (<i>Mytilus edulis</i>) beds to hand collection of shellfish. There are also unquantified costs associated with Flood and Coastal Erosion Risk Management, National Defence and Archaeology.</p> <p>Data Certainty</p> <p>The Cumbria Coast recommended MCZ does not have acceptable data certainty for any features within the site. However one</p>	

feature, Honeycomb worm (*Sabellaria alveolata*) reefs, which has been identified as a higher risk feature within this site, has acceptable data certainty for the presence and extent of the feature. Following the precautionary principle we propose making an exception for its reasonably uncertain conservation objective, therefore allowing it to be potentially designated in 2013. Within this site the remaining eight features have unacceptable data certainty and will require further work prior to their designation.

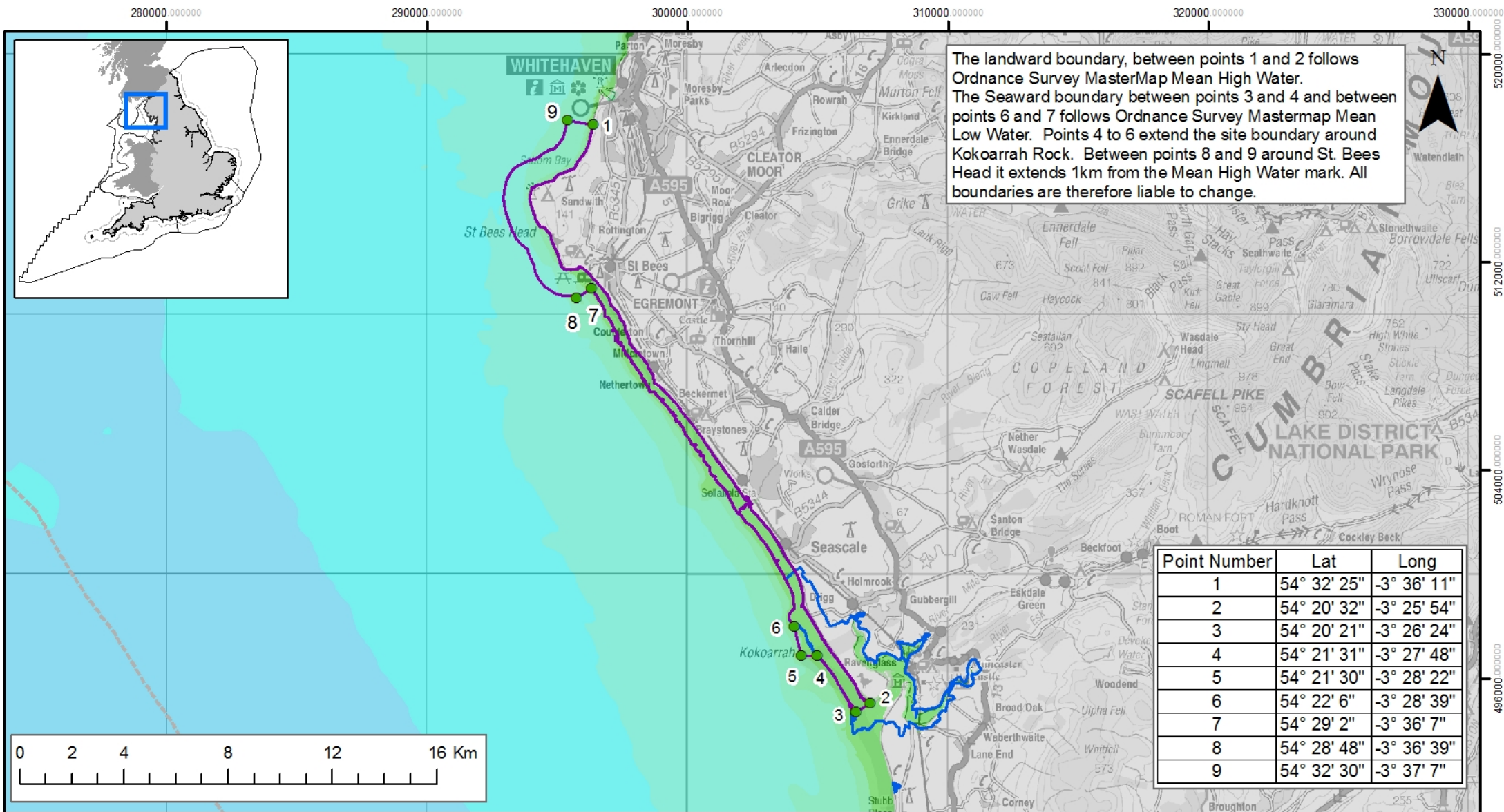
Conclusions

Therefore, as the advantages for this site justify the socio-economic costs, and the SNCBs have highlighted this site as at higher risk, this site has been proposed for designation in 2013 for the honeycomb worm (*Sabellaria alveolata*) reefs. Further work will be required to improve the data certainty for features not proposed for designation in 2013 prior to inclusion in future designations.

Table 4. Features Proposed for Designation in 2013

Features for designation in 2013	Features requiring improvement in data certainty prior to designation
Honeycomb worm (<i>Sabellaria alveolata</i>) reefs	High energy intertidal rock
	Intertidal sand and muddy sand
	High energy infralittoral rock
	Intertidal biogenic reefs
	Blue mussel (<i>Mytilus edulis</i>) beds
	Intertidal underboulder communities
	Peat and clay exposures

	Black guillemot (<i>Cepphus grille</i>)
--	---



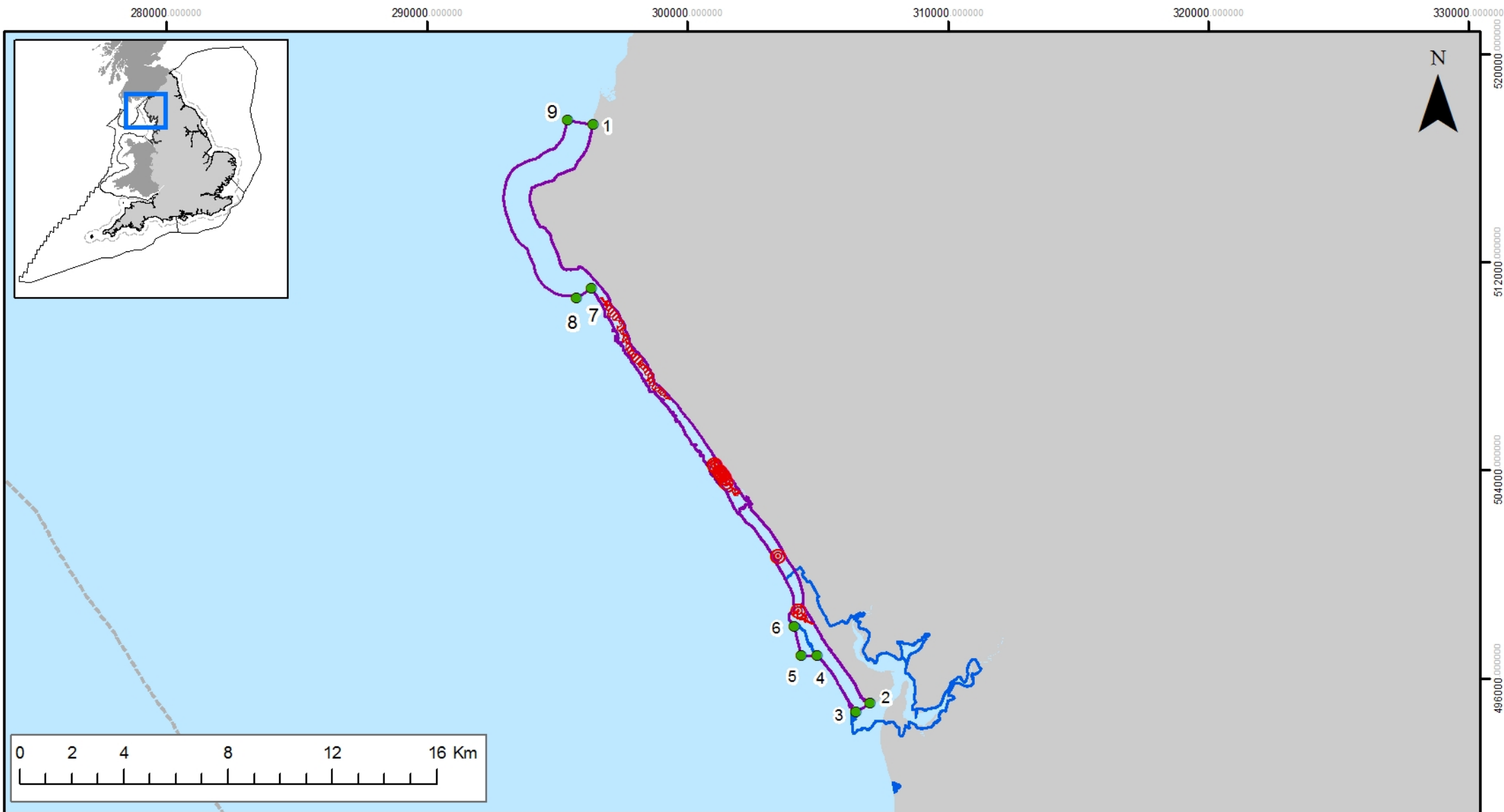
Cumbria Coast rMCZ



Depth Areas (metres)



Contains information from the Ordnance Survey © Crown Copyright and database right 2012. Ordnance Survey 100022021. UKHO Data © British Crown Copyright. All rights reserved. Permission Number Defra012012.001. This product has been derived in part from material obtained from the UK Hydrographic Office with the permission of the Controller of Her Majesty's Stationery Office and UK Hydrographic Office (www.ukho.gov.uk). Map produced by Natural England/JNCC 2012. Reference: Theme ID: 1475910 Map Projection: British National Grid



Cumbria Coast rMCZ

- Recommended MCZ
- rMCZ boundary co-ordinates
- Regional MCZ project area
- 12nM Territorial Seas Limit
- Land

- SAC with Marine Components

Features proposed for 2013 designation

- ⊙ Honeycomb worm reefs (*Sabellaria alveolata*)
- Honeycomb worm reefs (*Sabellaria alveolata*)

Contains information from the Ordnance Survey
 © Crown Copyright and database right 2012.
 Ordnance Survey 100022021. UKHO Data
 © British Crown Copyright. All rights reserved.
 Permission Number Defra012012.001. This
 product has been derived in part from material
 obtained from the UK Hydrographic Office with
 the permission of the Controller of Her Majesty's
 Stationery Office and UK Hydrographic Office
 (www.ukho.gov.uk). Map produced by
 Natural England/JNCC 2012.
 Reference: Theme ID: 1475910
 Map Projection: British National Grid

Consultation Site Summary: Fylde Offshore

Additional information for this site can be found in the SNCB Advice (page 1037), Impact Assessment (Annex I2 Option 2, Page 460) and Regional Project recommendations (ISCZ –pMCZ Final Recommendations Pt.3.1, Page 172).

Table 1. General Information on site and all features recommended by Regional Projects

Regional Project: Irish Sea Conservation Zones		Site surface area: 260 km ²	Biogeographic Region: JNCC regional sea: Irish Sea. OSPAR region III: Celtic Seas.
Site Location: 53° 44' 48.519" N, 3° 13' 10.864" W 53.74681 Lat, -3.219684 Long. Lambert Azimuthal Equal Area projection, ETRS89 datum			
Inshore/Offshore: Inshore			
Feature type	Feature name	Area/no. of records	Conservation Objective – activity causing pressure
Broad Scale Habitat	Subtidal sand	260 km ²	Maintain
Habitat FOCI	Subtidal sands and gravels	200 km ²	Maintain

Table 2. Sector Impacts and Associated Best Estimate Costs

Sectors Impacted	Best Estimate Costs (£ per year)
Ports, Harbours and Commercial Shipping	<£1000
Archaeology	Unquantified
	Best Estimate Total Cost <£1000

Table 3. Designation Status of Site and Rationale

Decision	Designation in 2013 tranche
<p>Rationale for Decision:</p> <p>Site Advantages</p> <p>The Fylde Off-shore recommended MCZ is an inshore site measuring 260 km². Within this rMCZ there are a variety of features including one Broad Scale Habitat and one Habitat FOCl. Of particular interest within this site is the Subtidal sand as this site contributes the second largest area of Subtidal sand to the region. The site contains important nursery and spawning grounds for several commercially important fish. If this site is not designated, the project will only just meet the minimum ENG guideline for adequacy for Subtidal sand.</p> <p>Socio-Economics</p> <p>The Fylde Off-shore recommended MCZ received a good level of support from the Commercial Fishing and Conservation sectors. The site was agreed by NW IFCA if there are no additional management measures proposed. Concerns were raised about future fishing in this zone and the need for management to be flexible if future levels of fishing increase. Concerns were raised about anchoring (Commercial Shipping), although this is not a major concern in this area. The main sector impacted by this site is the Ports, Harbours and Commercial Shipping sector, for this sector there is a best estimate cost of less than £1000 associated with an increase in costs of assessing environmental impacts for future licence applications within 5km of the site. There is an indication that there could be unquantified costs in relation to the archaeology sector.</p>	

Data Certainty

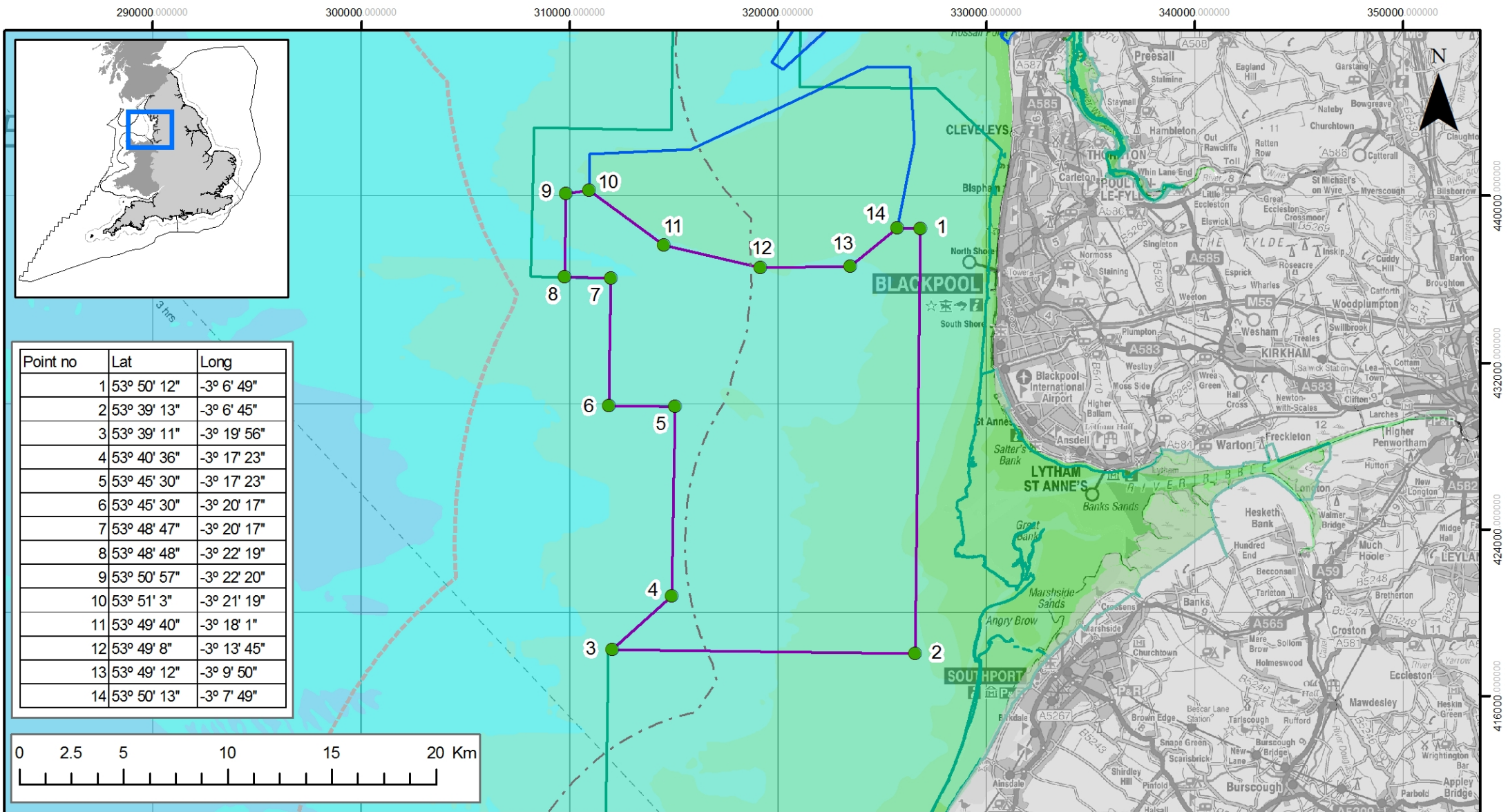
The Fylde Off-shore recommended MCZ has acceptable data certainty for both features.

Conclusion

Therefore, as the advantages for this site justify the socio-economic costs and the data certainty is acceptable for all features, this site has been proposed for designation in 2013 for all features.

Table 4. Features Proposed for Designation in 2013

Features for designation in 2013	Features requiring improvement in data certainty prior to designation
Subtidal sand	-
Subtidal sands and gravel	-



Fylde Offshore rMCZ

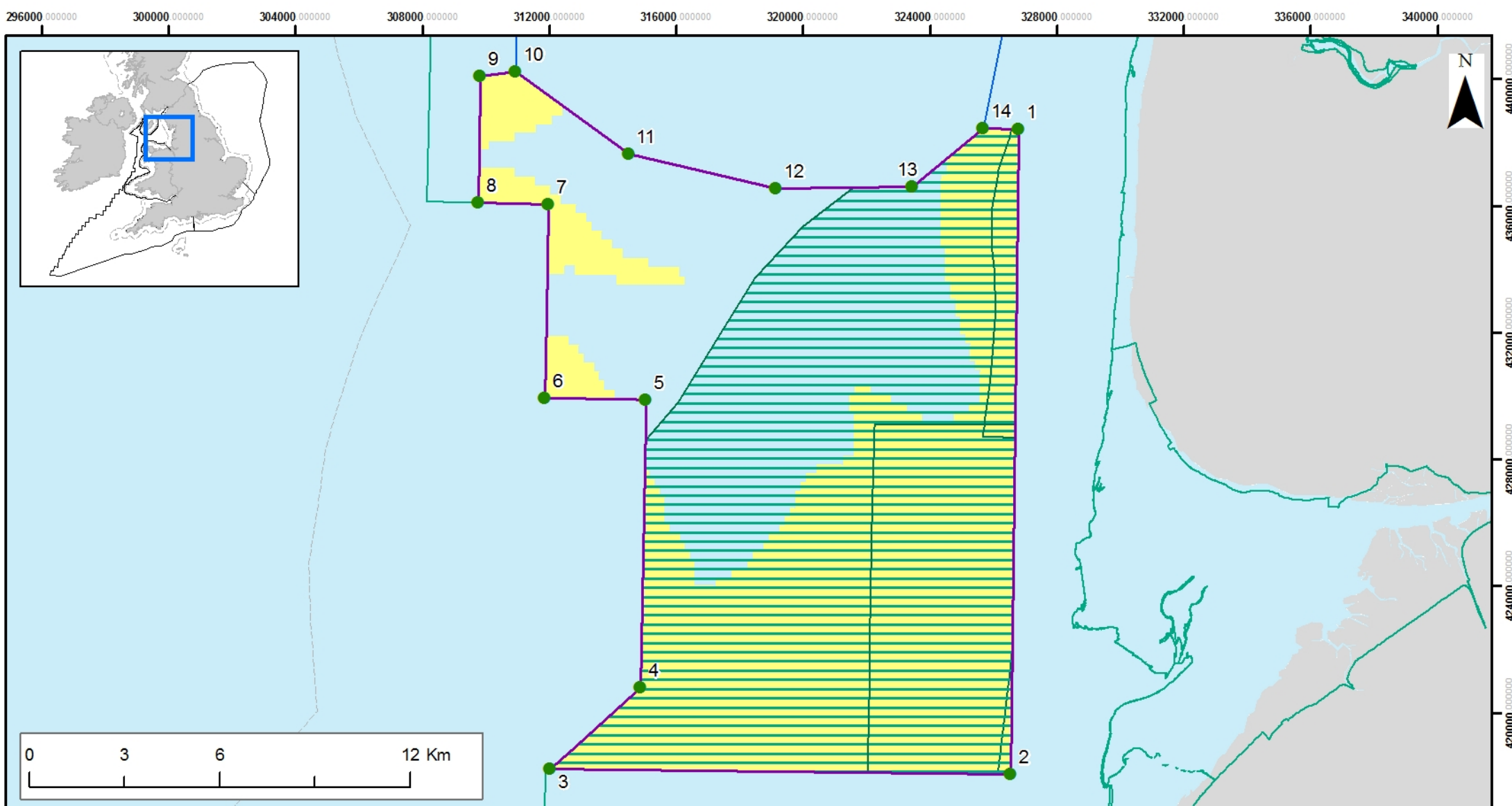
- Recommended MCZ
- rMCZ boundary co-ordinates
- Regional MCZ project area
- 12nM Territorial Seas Limit
- 6nM Territorial Seas Limit
- Land

- SAC with Marine Components
- SPAs with Marine Components

Depth Areas (metres)

- 20.0 - -10.0
- 25.1 - 50.0
- 9.9 - -5.0
- 50.1 - 100.0
- 4.9 - 0.0
- 100.1 - 250.0
- 0.1 - 5.0
- 250.1 - 500.0
- 5.1 - 10.0
- 500.1 - 1000.0
- 10.1 - 25.0

Contains information from the Ordnance Survey
 © Crown Copyright and database right 2012.
 Ordnance Survey 100022021. UKHO Data
 © British Crown Copyright. All rights reserved.
 Permission Number Defra012012.001. This
 product has been derived in part from material
 obtained from the UK Hydrographic Office with
 the permission of the Controller of Her Majesty's
 Stationery Office and UK Hydrographic Office
 (www.ukho.gov.uk). Map produced by
 Natural England/JNCC 2012.
 Reference: Theme ID: 1477724
 Map Projection: British National Grid



Fylde Offshore

Recommended MCZ

- Recommended MCZ
- rMCZ boundary co-ordinates
- MCZ Regional Projects boundaries
- England 12nM Territorial Seas Limit
- Land
- SAC with Marine Components
- SPA with Marine Components

Features proposed for 2013 designation

- Subtidal sand (A5.2)
- Subtidal sands and gravels

Contains information from the Ordnance Survey
 © Crown Copyright and database right 2012.
 Ordnance Survey 100022021. UKHO Data
 © British Crown Copyright. All rights reserved.
 Permission Number Defra012012.001. This
 product has been derived in part from material
 obtained from the UK Hydrographic Office with
 the permission of the Controller of Her Majesty's
 Stationery Office and UK Hydrographic Office
 (www.ukho.gov.uk). Map produced by
 Natural England/JNCC 2012.
 Reference: Theme ID 1477724,
 Map Projection: British National Grid

Consultation Site Summary: Hilbre Island Group

Additional information for this site can be found in the SNCB Advice (page 1053), Impact Assessment (Annex I2 Option 2, Page 492) and Regional Project recommendations (ISCZ –pMCZ Final Recommendations Pt.3.1, Page 233).

Table 1. General Information on site and all features recommended by Regional Projects

Regional Project: Irish Sea Conservation Zones		Site surface area: 5 km ²	Biogeographic Region: JNCC regional sea: Irish Sea. OSPAR region III: Celtic Seas.
Site Location: 53° 22' 38.363" N, 3° 13' 3.799" W 53.377323 Lat, -3.217721 Long. Lambert Azimuthal Equal Area projection, ETRS89 datum			
Inshore/Offshore: Inshore			
Feature type	Feature name	Area/no. of records	Conservation Objective – activity causing pressure
Habitat FOCI	Blue mussel (<i>Mytilus edulis</i>) beds	0.02 km ²	Recover
Habitat FOCI	Peat and clay exposures	0.02 km ²	Recover
Broad Scale Habitat	Intertidal Biogenic Reefs ²	0.5 km ²	Recover

² This site does not meet the minimum viability criteria (5km²) for the BSH Intertidal biogenic reefs, and is therefore considered unviable and will not be considered for designation.

Table 2. Sector Impacts and Associated Best Estimate Costs

Sectors Impacted	Best Estimate Costs (£ per year)
Commercial fishing	2,000
Ports, Harbours and Commercial Shipping	2,000
Archaeology	Unquantified
Recreation (including boating and sea angling)	Unquantified
	Best Estimate Total Cost = £4,000

Table 3. Designation Status of Site and Rationale

Decision	Designation in 2013 tranche
<p>Rationale for Decision:</p> <p>Site Advantages</p> <p>The Hilbre Island Group recommended MCZ is an estuary site measuring 5 km². Within this rMCZ there are two Habitat FOCI being considered for designation. This site would strengthen the protection afforded to peat and clay exposures within the Dee Estuary SAC which would support an array of mobile and attached fauna. Blue mussel (<i>Mytilusedulis</i>) beds are also an important food source for birds and have a strong stabilising effect on the sediment. The Regional MCZ Project recommended the site to protect Intertidal biogenic reefs, however, Natural England have advised that this site does not meet the minimum viability criteria for this feature, it has therefore been considered unviable and will not be considered for designation.</p> <p>Socio-Economics</p> <p>The Hilbre Island Group recommended MCZ is supported by most stakeholders provided that that the site is proposed for designation of the FOCI Blue mussel (<i>Mytilusedulis</i>) beds (and associated underlying subtidal biogenic reefs) and Peat and clay exposures only. Concerns were initially raised by the commercial fishing sector but these were alleviated on receipt of guidance on management. The main sectors impacted by this site are the Commercial Fishing and Ports, Harbours and Commercial Shipping sectors. For these sectors there is a best estimate cost of £2,000 (Commercial Fishing) and £2,000 (Ports, Harbours and</p>	

Commercial Shipping) associated with the closure of the Blue mussel (*Mytilusedulis*) beds to hand picking, and an increase in costs of assessing environmental impacts for future ports licence applications. There is also an indication that there are unquantified costs to the Archaeology and Recreation sectors.

Data Certainty

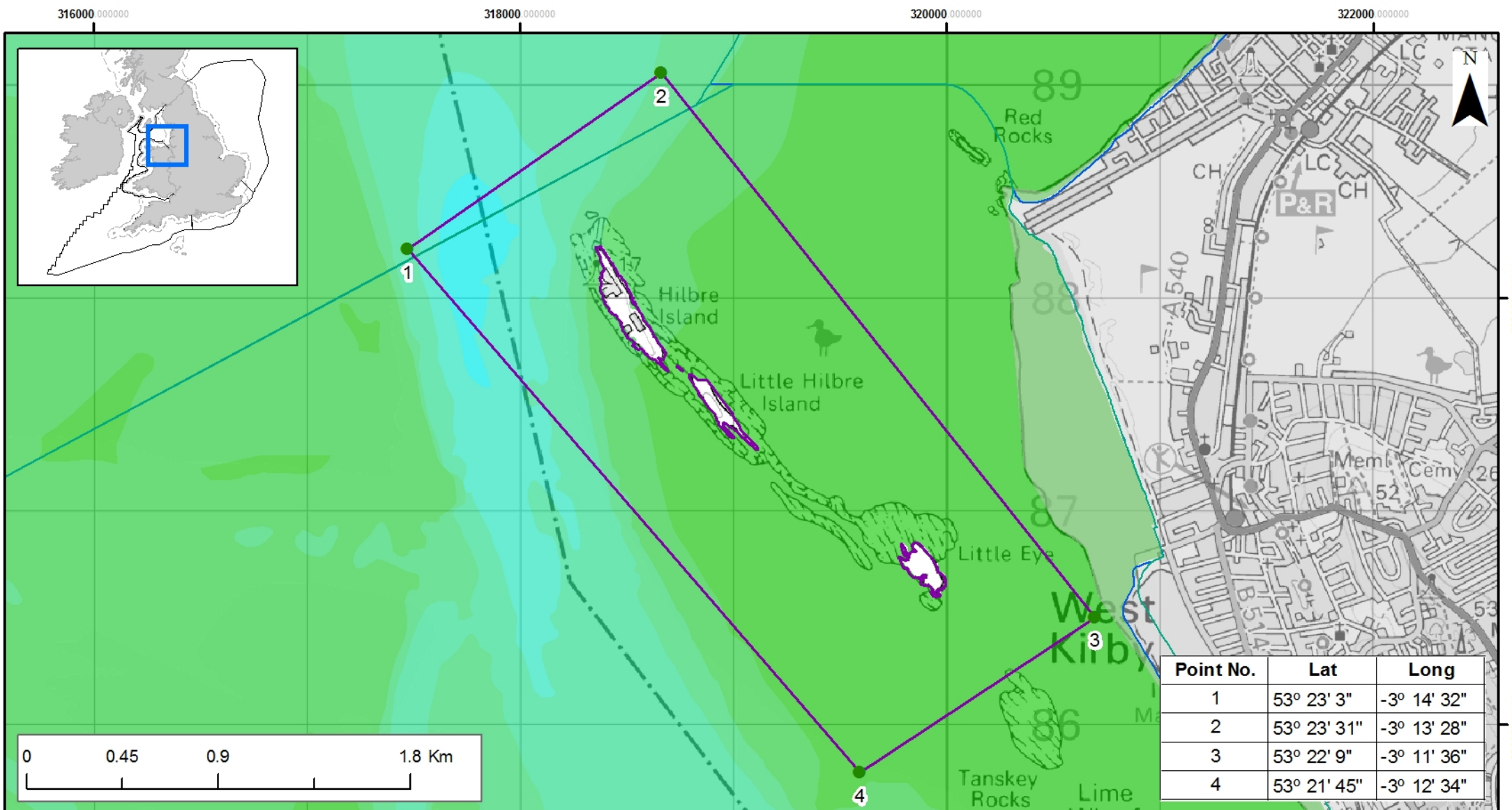
The Hilbre Island Group recommended MCZ has acceptable data certainty for both features recommended for designation by the SNCBs.

Conclusion

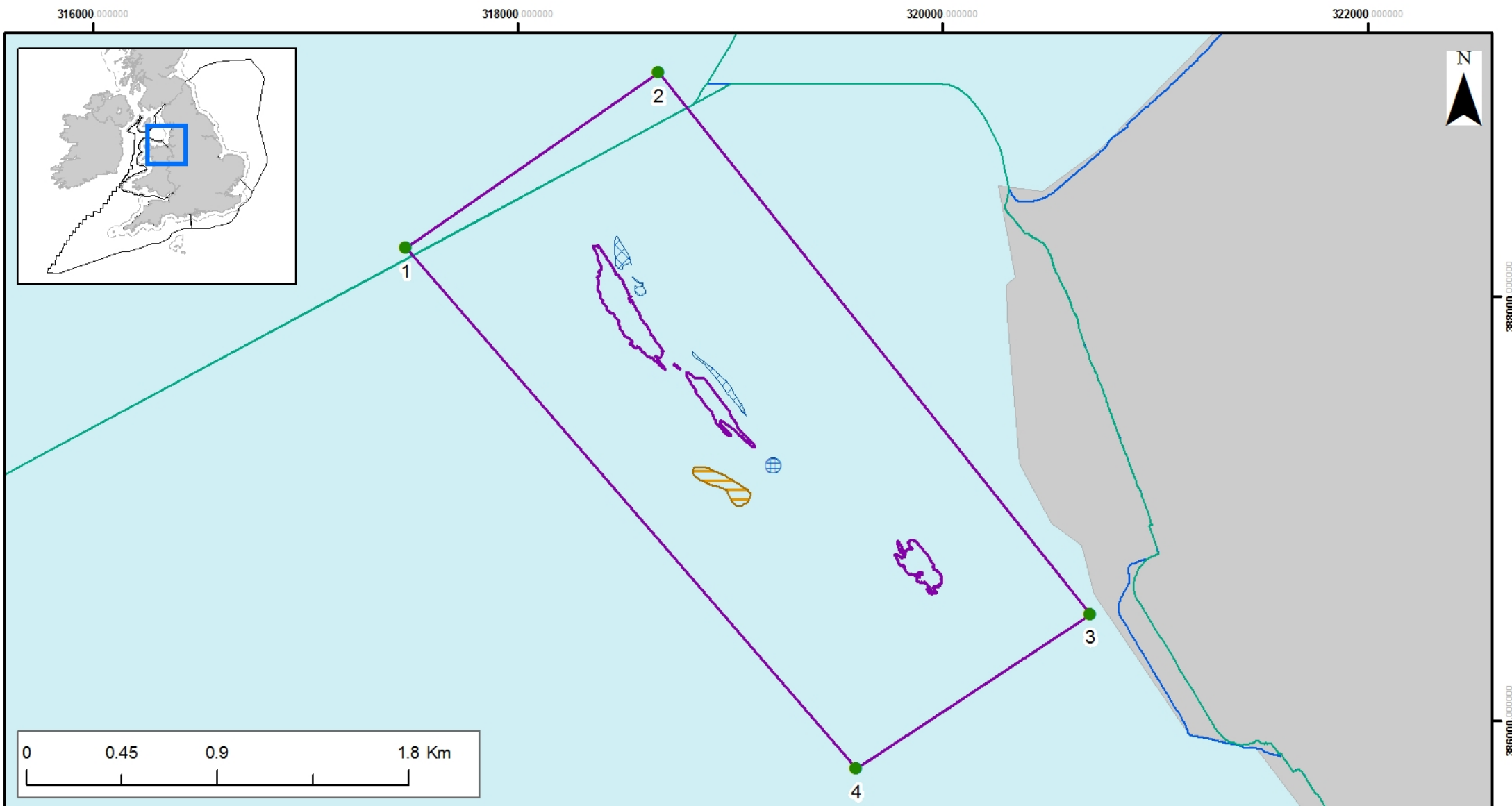
Therefore, as the advantages for this site justify the socio-economic costs and the data certainty is acceptable for all features being considered, this site has been proposed for designation in 2013 for two of the three features proposed by the regional project, following the advice of the SNCBs that the other feature isn't viable.

Table 4. Features Proposed for Designation in 2013

Features for designation in 2013	Features requiring improvement in data certainty prior to designation
Blue mussel (<i>Mytilusedulis</i>) beds	
Peat and clay exposures	



Contains information from the Ordnance Survey
© Crown Copyright and database right 2012.
Ordnance Survey 100022021. UKHO Data
© British Crown Copyright. All rights reserved.
Permission Number Defra012012.001. This
product has been derived in part from material
obtained from the UK Hydrographic Office with
the permission of the Controller of Her Majesty's
Stationery Office and UK Hydrographic Office
(www.ukho.gov.uk). Map produced by
Natural England/JNCC 2012.
Reference: Theme ID 1475913,
Map Projection: British National Grid



Hilbre Island Group

Recommended MCZ

- Recommended MCZ
- rMCZ boundary co-ordinates
- SAC with Marine Components
- MCZ Regional Project boundaries
- England 12nM Territorial Seas Limit
- Land

Features proposed for 2013 designation

- ⊗ Blue mussel beds
- Peat and clay exposures
- Blue Mussel beds

Contains information from the Ordnance Survey
 © Crown Copyright and database right 2012.
 Ordnance Survey 100022021. UKHO Data
 © British Crown Copyright. All rights reserved.
 Permission Number Defra012012.001. This
 product has been derived in part from material
 obtained from the UK Hydrographic Office with
 the permission of the Controller of Her Majesty's
 Stationery Office and UK Hydrographic Office
 (www.ukho.gov.uk). Map produced by
 Natural England/JNCC 2012.
 Reference: Theme ID 1475913,
 Map Projection: British National Grid

Consultation Site Summary: North of Celtic Deep

Additional information for this site can be found in the SNCB Advice (page 862), Impact Assessment (Annex I2 Option 2, Page 449) and Regional Project recommendations (ISCZ –pMCZ Final Recommendations Pt.3.1, Page 129).

Table 1. General Information on site and all features recommended by Regional Projects

Regional Project: Irish Sea Conservation Zones		Site surface area: 656 km ²	Biogeographic Region: JNCC regional sea: Irish Sea. OSPAR region III: Celtic Seas.
Site Location: 52° 5' 27.139" N, 5° 38' 48.496" W 52.090871 Lat, -5.646804 Long. Lambert Azimuthal Equal Area projection, ETRS89 datum Inshore/Offshore: Offshore			
Feature type	Feature name	Area/no. of records	Conservation Objective
Broad Scale Habitat	Subtidal coarse sediment	617 km ²	Recover
Broad Scale Habitat	Subtidal sand	33 km ²	Recover
Broad Scale Habitat	Moderate energy circalittoral rock	2.33 km ²	Maintain
Habitat FOCI	Subtidal sands and gravels	600 km ²	Recover

Table 2. Sector Impacts and Associated Best Estimate Costs

Sectors Impacted	Best Estimate Costs (£ per year)
Commercial Fishing	<1000
National Defence	Non site specific cost
Renewable Energy (wind, wave and tidal)	Unquantified
	Best Estimate Total Cost = < £1000

Table 3. Designation Status of Site and Rationale

Decision	Designation in 2013 tranche
Rationale for Decision:	
Site Advantages	
<p>The North of Celtic Deep recommended MCZ is an offshore site measuring 655 km². Within this rMCZ there are a variety of features including three Broad Scale Habitats and one Habitat FOCl. Of particular interest within this site is the Moderate energy circalittoral rock which has a limited distribution within the regional project area, and Subtidal coarse sediment where this site has the second largest area of the feature.</p>	
Socio-Economic	
<p>The North of Celtic Deep recommended MCZ is strongly supported by Conservation stakeholders. There is also strong opposition to this site from French Commercial Fishing interests, on the understanding that they may lose commercial fishing grounds if the site is designated. The main sector impacted by this site is the Commercial Fishing sector, for this sector there is a best estimate cost of less than £1000 associated. There is also an indication that there could be a non site specific cost to the National Defence sector, associated with additional planning considerations during operations and training.</p>	

Data Certainty:

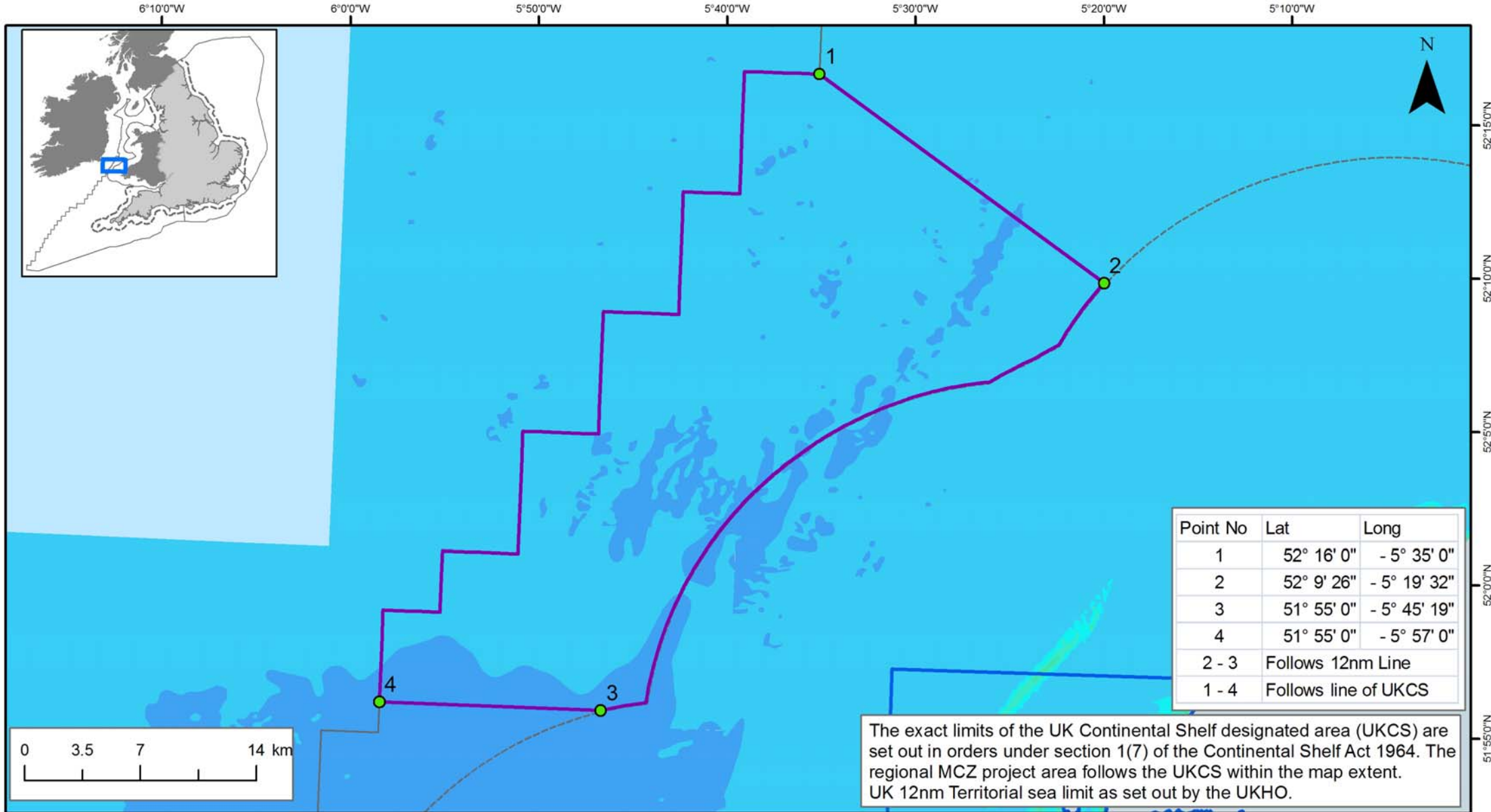
The North of Celtic Deep recommended MCZ has acceptable data certainty for two features. Within this site two features (Subtidal sand and moderate energy circalittoral rock) have unacceptable data certainty and will require further work prior to their designation.

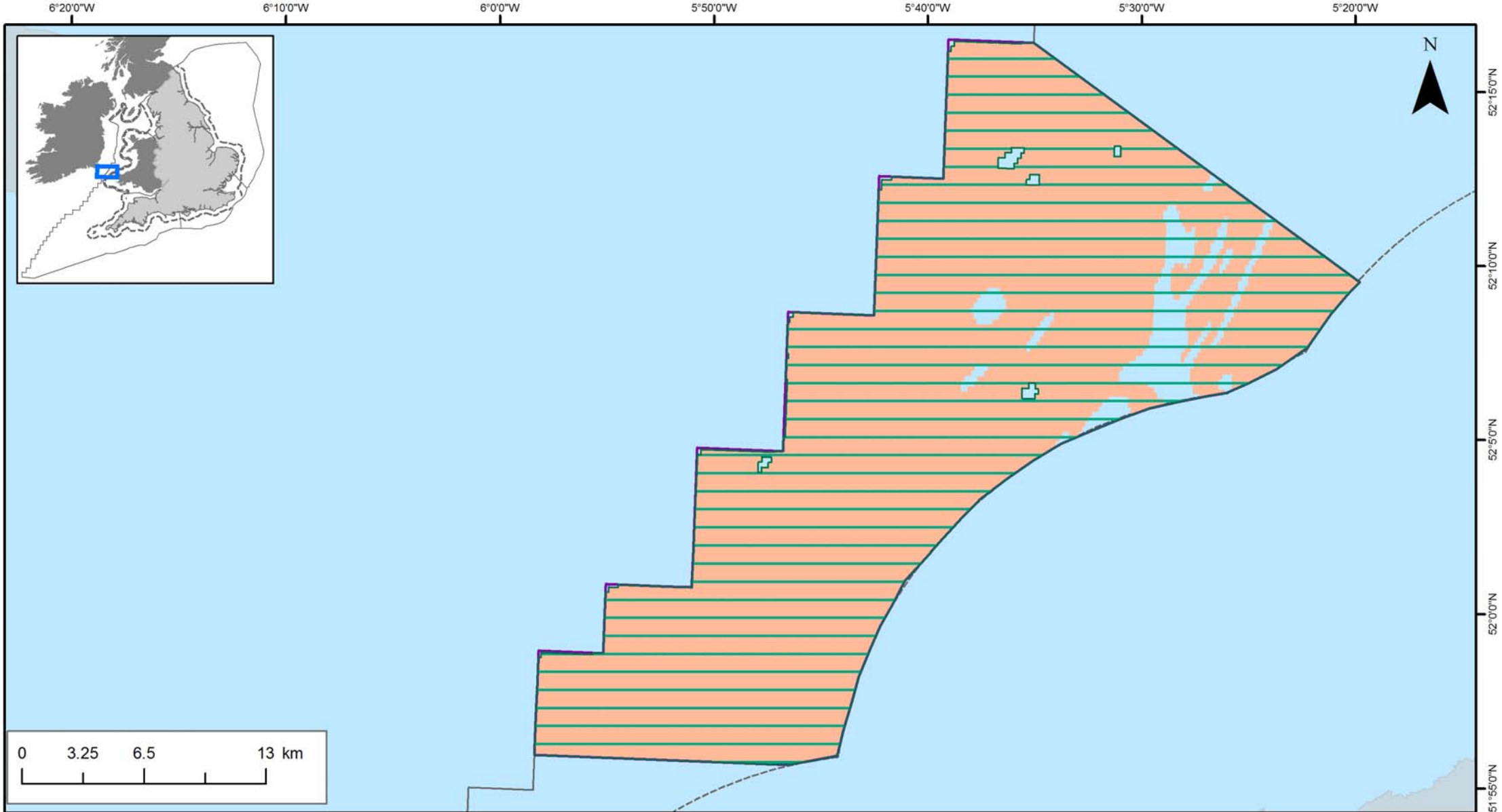
Conclusion

Therefore, as the advantages for this site justify the socio-economic costs and the data certainty is acceptable for sufficient features this site has been proposed for designation in 2013 for the features as demonstrated in the table above. Further work will be required to improve the data certainty for features not proposed for designation in 2013 prior to inclusion in future designations.






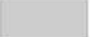
Table 4. Features Proposed for Designation in 2013

Features for designation in 2013	Features requiring improvement in data certainty prior to designation
Subtidal coarse sediment	Subtidal sand
Subtidal sands and gravels	Moderate energy circalittoral rock





North of Celtic Deep rMCZ

- | | | |
|--|-----------------------------|---|
|  | Recommended MCZ | Features proposed for 2013 designation |
|  | Regional MCZ project area |  Subtidal coarse sediment (A5.1) |
|  | 12nM Territorial Seas Limit |  Subtidal sands and gravels |
|  | Land | |

Contains information from the Ordnance Survey
 © Crown Copyright and database right 2012.
 Ordnance Survey 100022021. UKHO Data
 © British Crown Copyright. All rights reserved.
 Permission Number Defra012012.001. This
 product has been derived in part from material
 obtained from the UK Hydrographic Office with
 the permission of the Controller of Her Majesty's
 Stationery Office and UK Hydrographic Office
 (www.ukho.gov.uk). Map produced by
 Natural England/JNCC 2012.

Map Projection:[WGS84UTM30N] Inset:BNG

