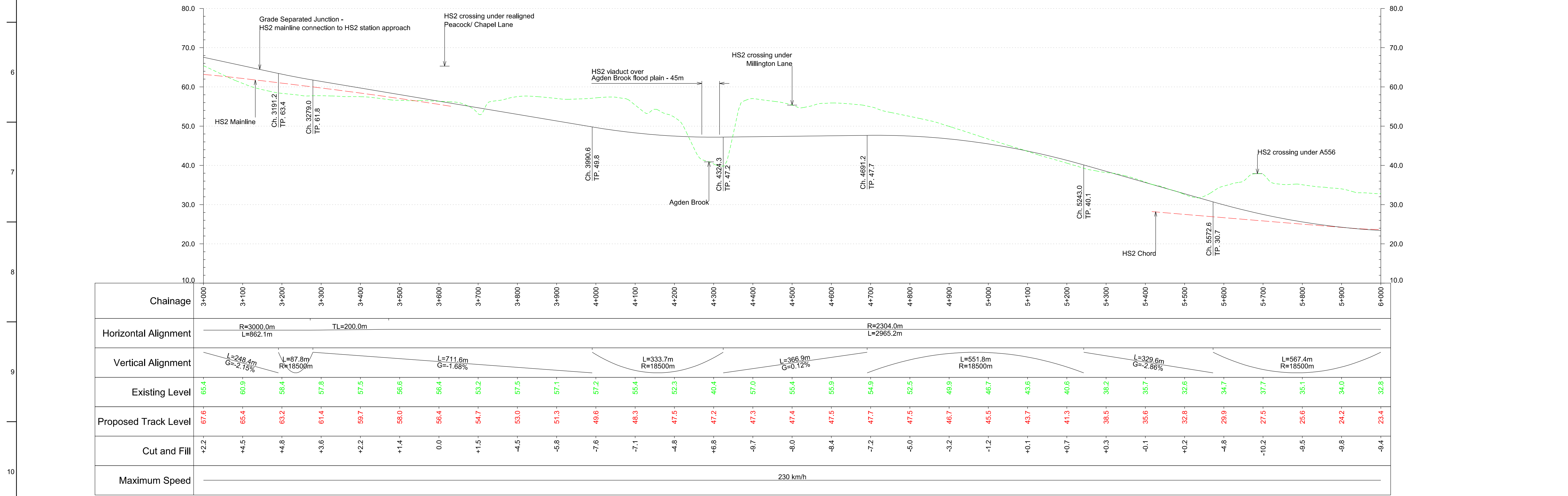


Plan
Scale 1:5,000 @ A1



Profile
Scale H:1:5,000 V:1:500 @ A1

© Crown copyright and database rights 2012 Ordnance Survey 10004919.0.

Key Environmental Features Legend

- World Heritage Site
- Ramsar
- Special Areas of Conservation
- Special Protection Areas
- SSSI
- National Nature Reserves
- Area of Outstanding Natural Beauty
- National Park
- Scheduled Monuments
- Registered Parks and Gardens
- Historical Battlefields
- Active and/or Authorised Landfill
- Historical Landfill
- Flood Zone 3

Legend

- Alignment Centreline
- Viaduct / Tunnel / Fully Retained Cutting
- Major Contour
- Minor Contour
- Node
- Retained structures will be used at depths of 15m or greater
- Railway Cutting
- Railway Embankment
- Highway Cutting
- Highway Embankment

Issue	Date	By	Chkd	Appd
P6	23.11.12	VS	RC	TW
P5	16.11.12	JA	RC	TW
P4	30.10.12	JFF	RC	TW
P3	19.10.12	JA	RC	TW
P2	31.08.12	MM	RC	TW
P1	20.03.12	MM	RC	TW

Client

Job Title
HS2 West Midlands to Manchester
Initial Preferred Route
December 2012

Scale at A1
1:5000

Discipline
Rail

MOTT MACDONALD SCOTT WILSON GRIMSHAW

Drawing Title
Route HSM28
Plan and Profile
Sheet 2 of 9

Drawing Status
-

Job No
277592

Drawing No
HS2-MSG-MA0-ZZ-DR-RT-52802

Issue
P6