

Single Soldiers' Accommodation

The BLOCK!



The Block is situated next to the 'Cook House' and only 100m from the large Naafi and Amenities Centre.

Type 3 Grade 3

This picture is of a Type 3, Grade 3 Married Quarter in Cambria Road.

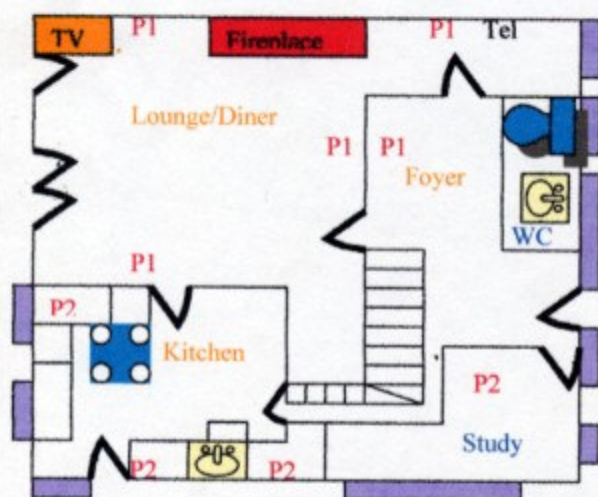


Your house is located within Dhekelia Garrison main camp some 10 miles east of Larnaca and its airport.

The following facilities are all located within the camp boundaries, Banks, Post Office, Med Cen-, Dentist and a large NAAFI. They are within a short walk/drive or alternatively a short bus ride.

All Married Quarters and Schools are also within the camp boundaries.

www.dhekelia@hivegb.co.uk



Measurements for the ground floor

Lounge = 5.50m x 8.00m

Kitchen = 4.70m x 3.40m

Study = 3.50m x 2.85m

Windows

Lounge = W 227cm x D 245cm (x2)

= W 227cm x D 245 cm (x2)

= W 185cm x D 165cm (x2)

WC = W 120cm x D 70 cm (x2)

Study = W 185cm x D 165cm (x2)

= W 125cm x D 135cm (x2)

Kitchen = W 125cm x D 135cm (x2)

= W 185 x D 130cm (x2)

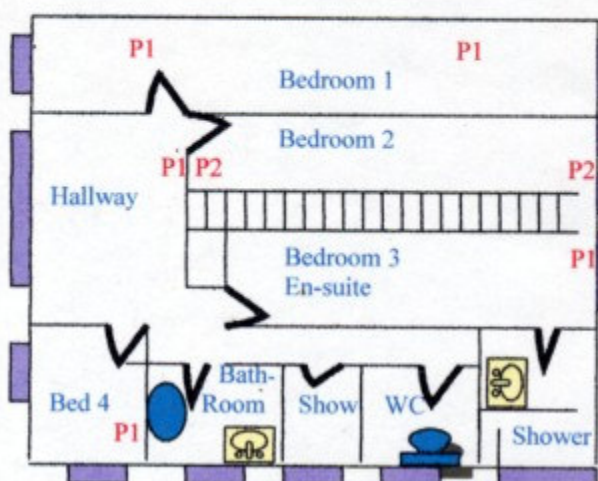
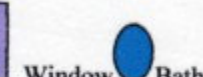
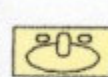
Key

P1 = Power point x1

P2 = Power point x2

TV = Aerial socket

Tel = Telephone



Measurements for the first floor

Bed 1 = 350m x 550m

Bed 2 = 384m x 420m

Bed 3 = 310m x 350m

Bed 4 = 380m x 220m

Windows

Bed 1 = 125cm x 135cm (x4)

Bed 2 = 125cm x 135cm (x2)

: = 132cm x 135cm (x2)

Bed 3 = 125cm x 134cm (x2)

: = 125cm x 100cm (x2)

Bed 4 = 70cm x 100cm (x2)

: = 185cm x 185cm (x2)

Dhekelia, Type 3, Grade 4

This picture is of a Type 3, Grade 4 Married Quarter in Lumley Road.

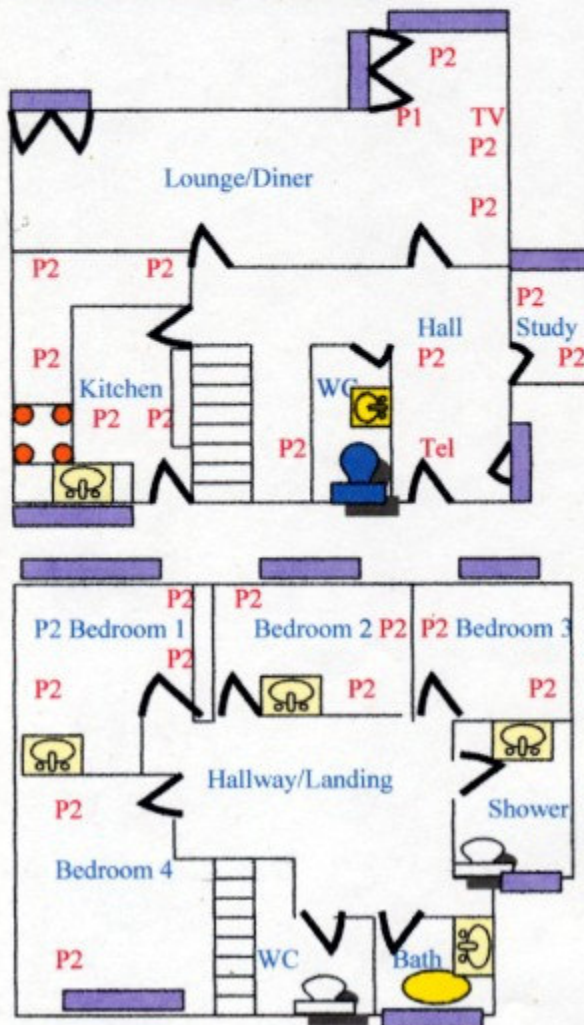


Your house is located within Dhekelia Garrison main camp some 10 miles east of Larnaca and its airport.

The following facilities are all located within the camp boundaries, Banks, Post Office, Med Cen-, Dentist and a large NAAFI. They are within a short walk/drive or alternatively a short bus ride.

All Married Quarters and Schools are also within the camp boundaries.

www.dhekelia@hivegb.co.uk



Measurements for the ground floor

Lounge = 6.30m x 3.80m

Diner = 3.90m x 4.45m

Hall = 3.40m x 1.60m

Study = 3.90m x 3.00m

Kitchen = 3.90m x 3.40m

Windows

Lounge = W 130cm x D 90cm

= W 220cm x D 180cm

Diner = W 262cm x D 230cm

Study = W 265cm x D 180cm

= W 120cm x D 50cm

Kitchen = W 140cm x D 125cm

Key

P1 = Powerpoint x1

P2 = Powerpoint x2

TV = Aerial socket

Tel = Telephone



Sink



WC



Win



bath

Measurements for the first floor

Bedroom 1 = 5.8m x 4.00m

Bedroom 2 = 5.80m x 3.80m

Bedroom 3 = 1.75m x 2.85m

Bedroom 4 = 3.35m x 3.35m

Windows = Bed 1 = 230cm x 200cm

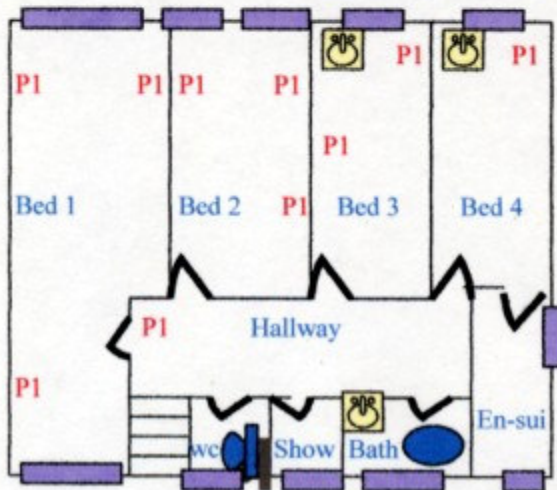
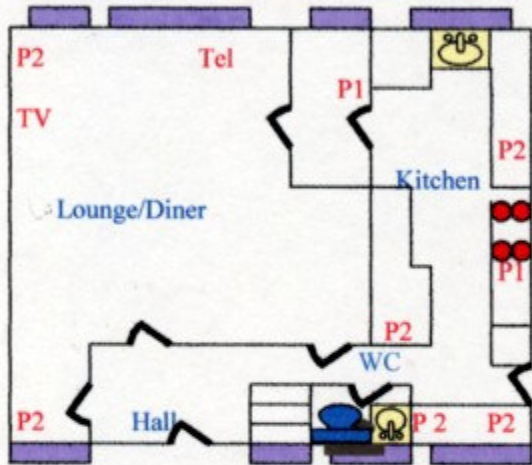
= Bed 2 = 180cm x 2.00cm

= Bed 3 = 145cm x 90cm

= Bed 4 180cm x 125cm

Dhekelia Type 4, Grade 3

This picture is of a Type 4, Grade 3 Married Quarter in Cambrai Road.



Your house is located within Dhekelia Garrison main camp some 10 miles east of Larnaca and its airport.

The following facilities are all located within the camp boundaries, Banks, Post Office, Med Cen-, Dentist and a large NAAFI. They are within a short walk/drive or alternatively a short bus ride. All Married Quarters and Schools are also within the camp boundaries.

www.dhekelia@hivegb.co.uk

Measurements for the ground floor

Lounge = 5.60m x 4.70m

Kitchen = 5.70m x 2.20m

Windows

Lounge = D220cm x W245cm (x4)

= D140cm x 130cm (x2)

= D48cm x W 130cm (x2)

Hall = D 100cm x 130cm (x2)

WC = D 50cm x 130cm (x2)

Kitchen = D 110cm x W 130cm (x2)

= D 47cm x W 130cm (x2)

= D 50cm x W 130cm

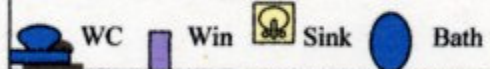
Key

P1 = PowerPoint x1

P2 = PowerPoint x2

Tel = Telephone

TV = Aerial socket



Measurements for the first floor

Bed 1 = 5.25m x 5.5m

Bed 2 = 3.10m x 4.20m

Bed 3 = 2.30m x 2.60m

Bed 4 = 3.60m x 3.00m

Windows

Bed 1 = D 1.00cm x W 1.30cm x2

= D 1.50cm x W 1.30cm x2

Bed 2 = D 1.00cm x W 1.30cm x2

= D 1.50cm x W 1.30cm x2

Bed 3 = D 1.00cm x W 1.30cm x2

Bed 4 = D 1.50cm x W 1.30cm x2

En- Sui = D 60cm x W130cm x2

Bath = D 50cm x W130cm x2

Show = D50cm x W 30cm

WC = D100cm x W 130CM

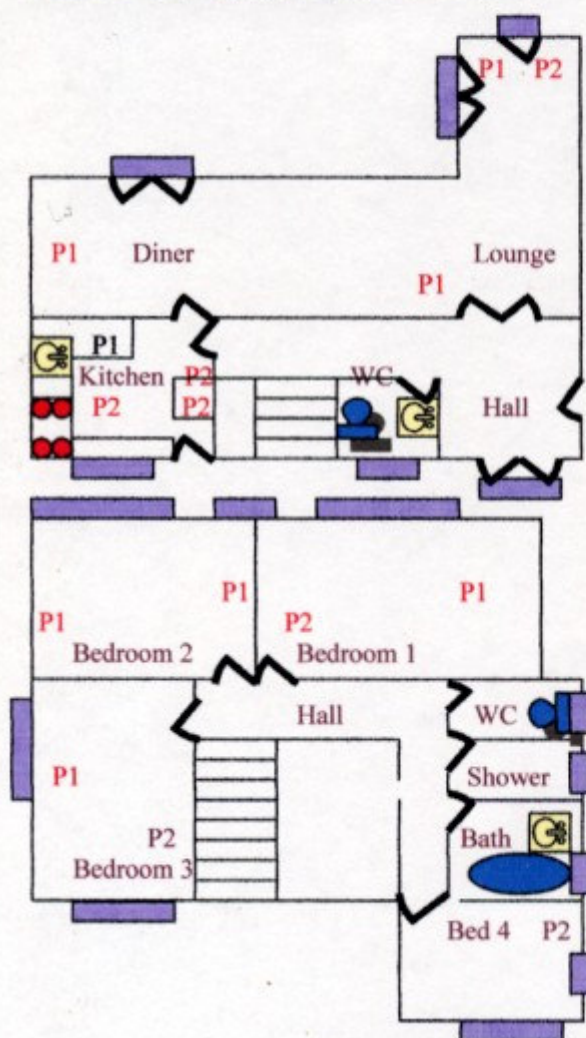
Dhekelia Type 4, Grade 4



Your house is located within Dhekelia Garrison main camp some 10 miles east of Larnaca and its airport.

The following facilities are all located within the camp boundaries, Banks, Post Office, Med Cen-, Dentist and a large NAAFI. They are within a short walk/drive or alternatively a short bus ride. All Married Quarters and Schools are also within the camp boundaries.

www.dhekelia@hivegb.co.uk



Measurements for the ground floor

Lounge = 5.30m x 3.85m

Diner = 3.45m x 3.90m

Hall = 2.70m x 1.70m

Kitchen = 3.30m x 2.70m

Windows

Lounge = 1.75cm x 2.60cm Patio doors x2

= 90cm x 2.60cm Patio doors x1

= 1.75cm x 2.60cm Patio doors x2

= 1.70cm x 2.20cm Patio doors x2

Kitchen = 1.40cm x 1.10cm x2

WC = 60cm x 40cm x2

Key



Measurements for the first floor

Bedroom 1 = 3.50m x 3.70m

Bedroom 2 = 3.50m x 3.70m

Bedroom 3 = 3.45m x 3.50m

Bedroom 4 = 3.00m x 3.05m

Windows

Bed 1 = 170cm x 240cm x2

Bed 2 = 170cm x 240cm x2

= 60cm x 65cm x2

Bed 3 = 120cm x 25 cm x2

Bed 4 = 120cm x 25cm x4

Bath = 165cm x 40cm x2

WC = 40cm x 60cm x2

Show = 40cm x 60cm x2

Dhekelia Type 5, Grade 3

This picture is of a Type 5, Grade 3 Married Quarter in Cambrai Road.

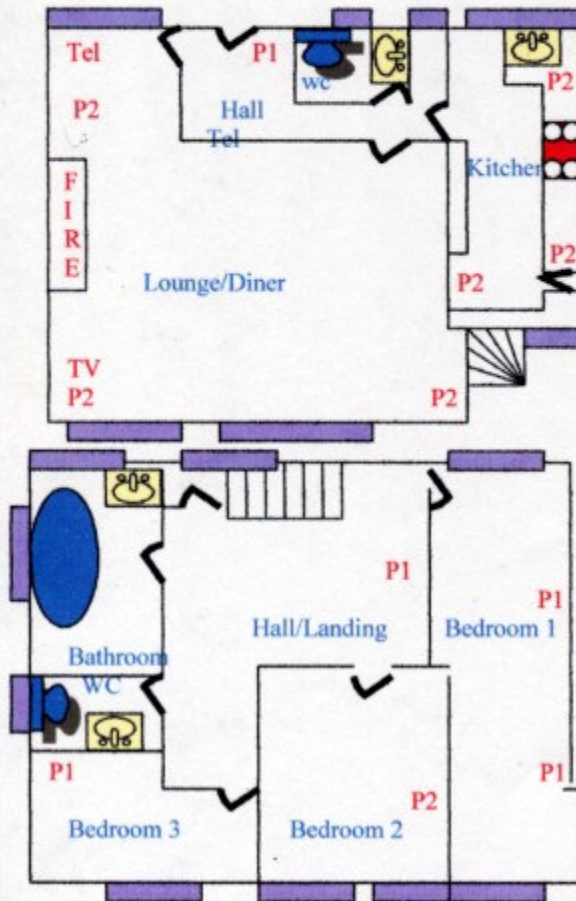


Your house is located within Dhekelia Garrison main camp some 10 miles east of Larnaca and its airport.

The following facilities are all located within the camp boundaries, Banks, Post Office, Med Cen-, Dentist and a large NAAFI. They are within a short walk/drive or alternatively a short bus ride.

All Married Quarters and Schools are also within the camp boundaries.

www.dhekelia@hivegb.co.uk



Measurements for the ground floor

Lounge = 5.10m x 5.20m

Kitchen = 5.10m x 2.20m

Windows

Lounge = 180cm x 160cm x4
= 265cm x 250cm x2

WC = 60cm x 60cm x2

Hall = 60 cm x 60cm x2

Kitchen = 120cm x 125cm x4

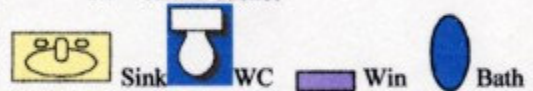
Key

P1 = Powerpoint x1

P2 = Powerpointx2

Tel = Telephone

TV = Aerial socket



Measurements for the first floor

Bed 1 = 4.90m x 3.50m

Bed 2 = 3.05m x 4.60m

Bed 3 = 3.80m x 2.30m

Hall = 6.40m x 1.50m

Windows

Bed 1 = 120cmx 130cm x4

Bed 2 = 125cm x 130cm x4

Bed 3 = 130cm x 125cm x2

Bath/wc 60cm x 1.00cm x4

Bath = 130cm x 130cm x2

Hall = 125cm x 125cm x2

Dhekelia Type 5, Grade 4

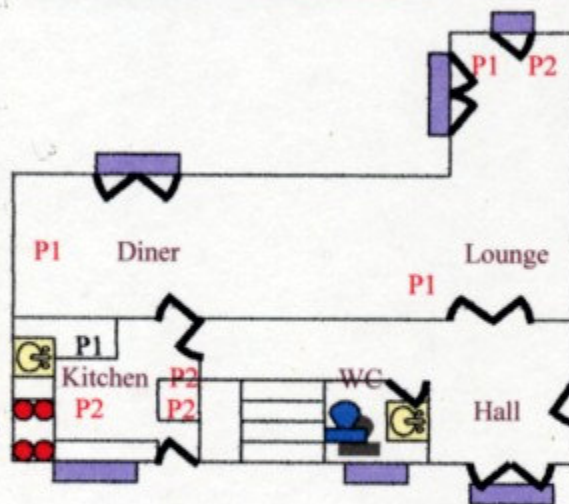
This picture is of a Type 5, Grade 4 Married Quarter in Blenheim Village.



Your house is located within Dhekelia Garrison main camp some 10 miles east of Larnaca and its airport.

The following facilities are all located within the camp boundaries, Banks, Post Office, Med Cen-, Dentist and a large NAAFI. They are within a short walk/drive or alternatively a short bus ride. All Married Quarters and Schools are also within the camp boundaries.

www.dhekelia@hivegb.co.uk



Measurements for the ground floor

Lounge = 5.30m x 3.85m

Diner = 3.45m x 3.90m

Hall = 2.70m x 1.70m

Kitchen = 3.30m x 2.70m

Windows

Lounge = 1.75cm x 2.60cm Patio doors x2

= 90cm x 2.60cm Patio doors x1

= 1.75cm x 2.60cm Patio doors x2

= 1.70cm x 2.20cm Patio doors x2

Kitchen = 1.40cm x 1.10cm x2

WC = 60cm x 40cm x2

Key



Sink



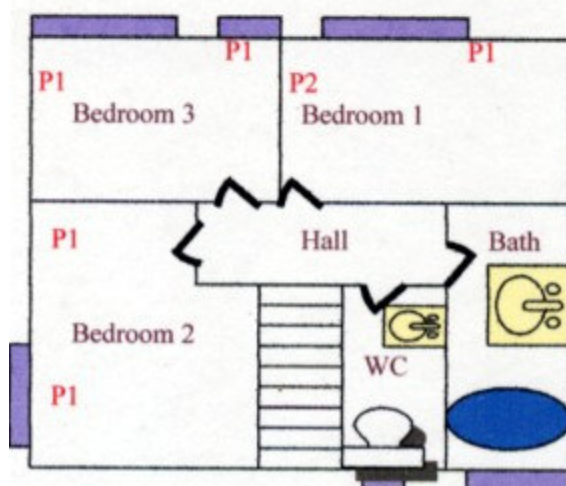
WC



Bath



Win



Measurements for the first floor

Bedroom 1 = 3.50m x 3.70m

Bedroom 2 = 3.50m x 3.70m

Bedroom 3 = 3.45m x 3.50m

Windows

Bed 1 = 170cm x 240cm x2

Bed 2 = 170cm x 240cm x2

= 60cm x 65cm x2

Bed 3 = 120cm x 25 cm x2

Bath = 165cm x 40cm x2

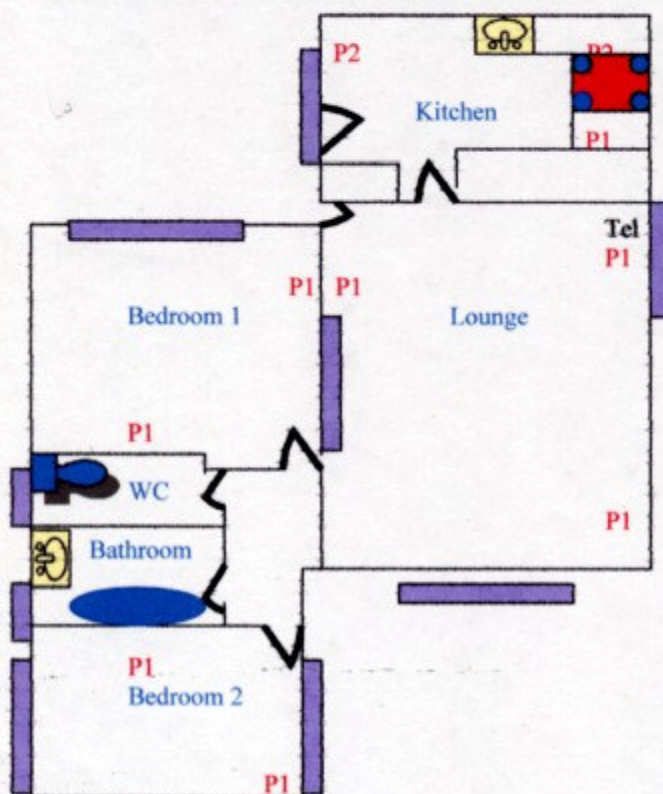
WC = 40cm x 60cm x2

Dhekelia, Bungalow, Grade 4

This picture is of a Type B, Grade 4 Married Quarter in Belmont Village.



Your quarter is located within Dhekelia Garrison main camp some 10 miles east of Larnaca and its airport. The following facilities are all located within the camp boundaries, Banks, Post Office, Med Cen-, Dentist and a large NAAFI. They are within a short walk/drive or alternatively a short bus ride. All Married Quarters and Schools are also within the camp boundaries.
www.dhekelia@hivegb.co.uk



Measurements for house

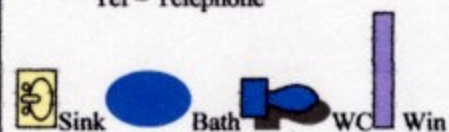
Lounge = 6.60m x 4.60m
Kitchen = 2.95m x 3.10m
Bedroom 1 = 3.20m x 3.60m
Bedroom 2 = 3.30m x 3.60m

Windows

Lounge = W 20cm x D 1.85cm
Top Window = W 4.80 x D 64cm
Bedroom 1 = W 150cm x D 2.00cm
Bedroom 2 = W 1.50cm x D 2.00cm
Kitchen = W 2.00cm x D 2.20cm

Key

P1 = Powerpoint x1
P2 = Powerpoint x2
Tel = Telephone

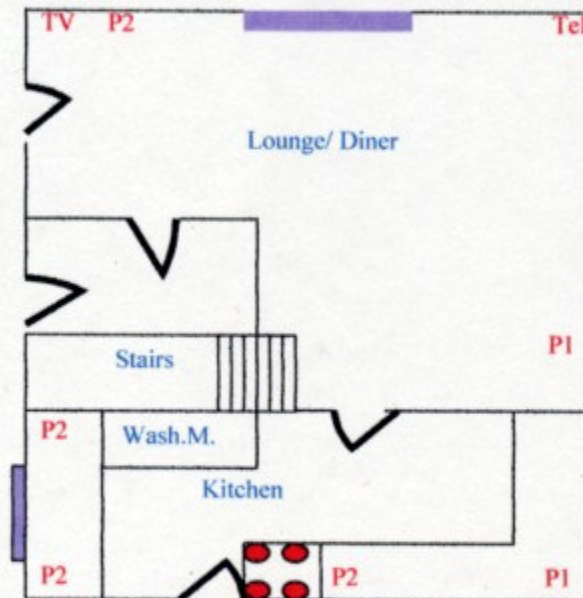


Dhekalia Type B Grade 4

This picture is of a Type B, Grade 4 Married Quarter in Aisne Road.



Your house is located within Dhekalia Garrison main camp some 10 miles east of Larnaca, and including its Airport. The following facilities are all located within the camp boundaries, Banks, Post Office, Med Cen-, Dentist and a large NAAFI. They are within a short walk/drive or alternatively a short bus ride. All Married Quarters and Schools are also within the camp boundaries.
www.dhekalia@hivegb.co.uk



Measurements for the Ground Floor

Living Room = 5m x 5.30m

Kitchen = 3.80 m x 2m

Lounge Windows

Front Patio = W 260cm x D 240cm

Rear Window = W170cm x D 180cm

Dinning Room = W170cm x D180cm

Kitchen Windows

Rear Window W 170cm D 140cm

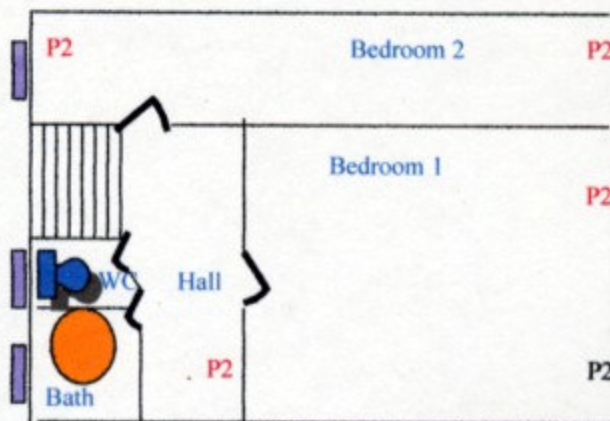
Front Window W 130cm D 140cm

Key P1 = Power point x1

P2 = PowerPoint x2

TV = Aerial socket

Tel = Telephone



Measurements for the First Floor

Bedroom 1= 3m x 5m

Bedroom 2= 5m x 2.30m

Window sizes

Bed 1 = W 170cm x D 150cm (x2)

W 130cm x D 140cm (x2)

Bed 2 = W 110cm x D 140 cm (x2)

W 110 cm x D 140cm (x2)

Dhekelia Type C, Grade 1

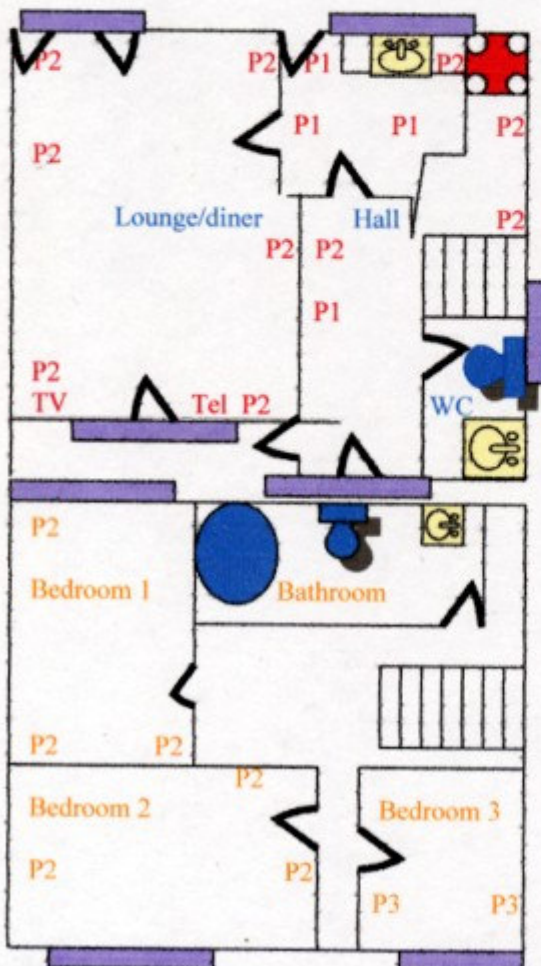
This picture is of a Type C, Grade 1 Married Quarter in Byron Heights Estate.



Your quarter is located within Dhekelia Garrison main camp some 10 miles east of Larnaca and its airport.

The following facilities are all located within the camp boundaries, Banks, Post Office, Med Cen-, Dentist and a large NAAFI. They are within a short walk/drive or alternatively a short bus ride. This particular house has a semi attached garage not shown on scale. All Married Quarters and Schools are also within the camp.

www.dhekelia@hivegb.co.uk



Measurements for ground floor

Lounge/diner = 730 m x 3.25m

Kitchen = 4.10m x 3.30m

Windows

Lounge = x 2 Pat doors D 2.34cm x W 2.25cm

Kitchen = D 1.15cm x W 1.15cm

WC = D 90cm x W 65cm

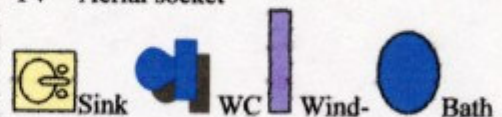
Key

P1 = PowerPoint x1

P2 = PowerPoint x2

Tel = Telephone

TV = Aerial socket



Measurements for the first floor

Bedroom 1 = 3.10m x 4.00m

Bedroom 2 = 3.00m x 2.85m

Bedroom 3 = 3.40m x 2.90cm

Windows

Bed 1 = D 235cm x W 225cm

Bed 2 = D 1.40cm x W 2.00cm

Bed 3 = D 235cm x W 225cm

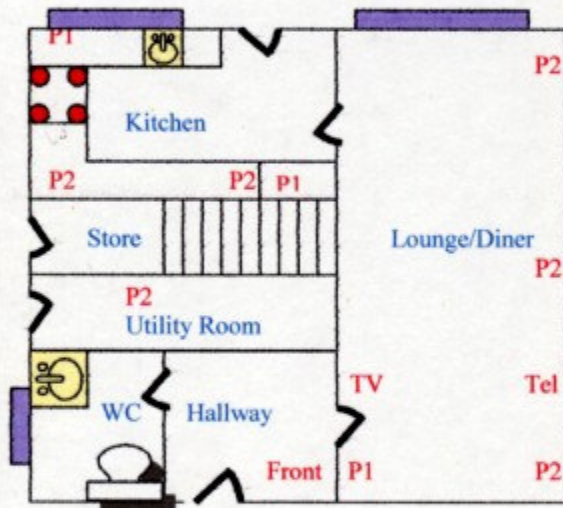
Bath = D 85cm x W 65cm

Dhekelia Type C, Grade 2

This picture is of a Type C, Grade 2 Married Quarter in Mount Pleasant Estate.



Your quarter is located within Dhekelia Garrison main camp some 10 miles east of Larnaca and its airport. The following facilities are all located within the camp boundaries, Banks, Post Office, Med Cen-, Dentist and a large NAAFI. They are within a short walk/drive or alternatively a short bus ride. All Married Quarters and Schools are also within the camp boundaries.
www.dhekelia@hivegb.co.uk



Measurements for the ground floor

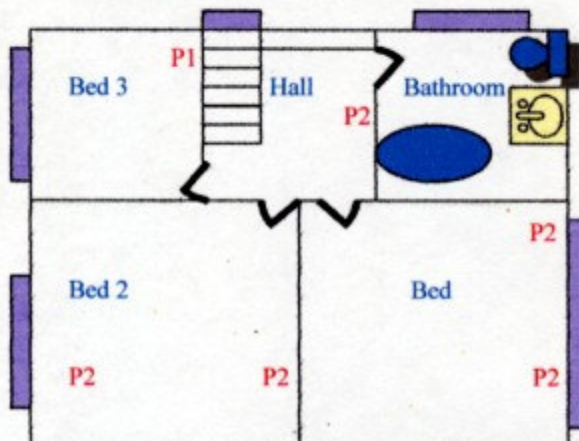
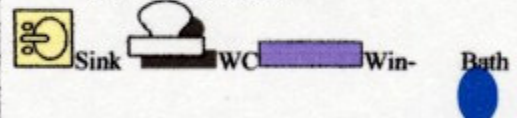
Lounge/Diner = 7.30m x 4.20m
Kitchen = 3.70m x 2.25m

Windows

Lounge = W225cm x D180cm (x4)
Kitchen = W145cm x 100cm (x2)
WC = W 60cm x 70cm (x2)

Key

P1 = Powerpoint x1
P2 = Powerpoint x2
Tel = Telephone
TV = Aerial socket



Measurements for the first floor

Bed 1 = 3.70m x 3.60m (x2)
Bed 2 = 3.50m x 3.30m (x2)
Bed 3 = 3.00m x 2.45m (x2)

Windows

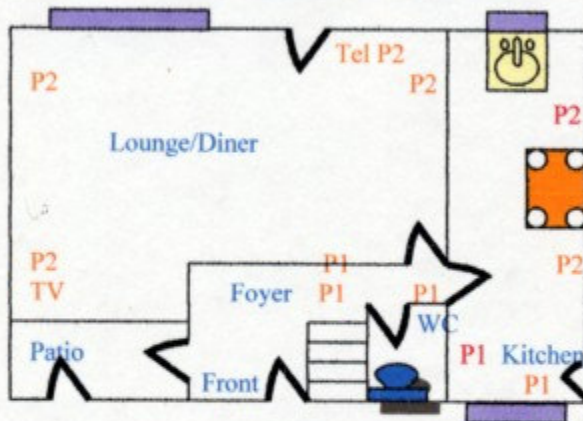
Bed 1 = W 225cm x D180cm (x2)
Bed 2 = W 225cm x D180cm (x2)
Bed 3 = W 150cm x D 130cm (x2)
Bath = W 80cm x D 80cm (x2)

Dhekelia Type C, Grade 3

This picture is of a Type C, Grade 3 Married Quarter in Minden Village.



Your home is located within Dhekelia Garrison main camp some 10 miles east of Larnaca and its airport. The following facilities are all located within the camp boundaries, Banks, Post Office, Med Cen-, Dentist and a large NAAFI. They are within a short walk/drive or alternatively a short bus ride. This particular house has fitted wardrobes in two bedrooms. All Married Quarters and Schools are also within the camp.
www.dhekelia@hivegb.co.uk



Measurements for the ground floor

Lounge = 7.50m x 5.10m

Kitchen = 5.00m x 3.70m

Windows

Lounge = D 1.50cm x W 1.50cm (x2)

Kitchen = D 2.20cm x W 2.20cm (x4)

Key

P1 = PowerPoint x1

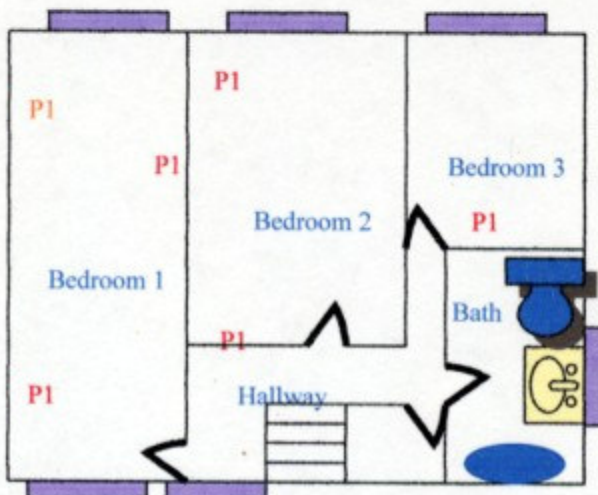
P2 = PowerPoint x2

TV = Aerial socket

Tel = Telephone



WC Sink Wind Bath



Measurements for the first floor

Bedroom 1 = 5.10m x 3.50m

Bedroom 2 = 3.3m x 4.00m

Bedroom 3 = 2.20m x 3.10m

Windows

Bed 1 = 1.50cm x 1.50cm x2

Bed 2 = 1.50cm x 1.50cm x2

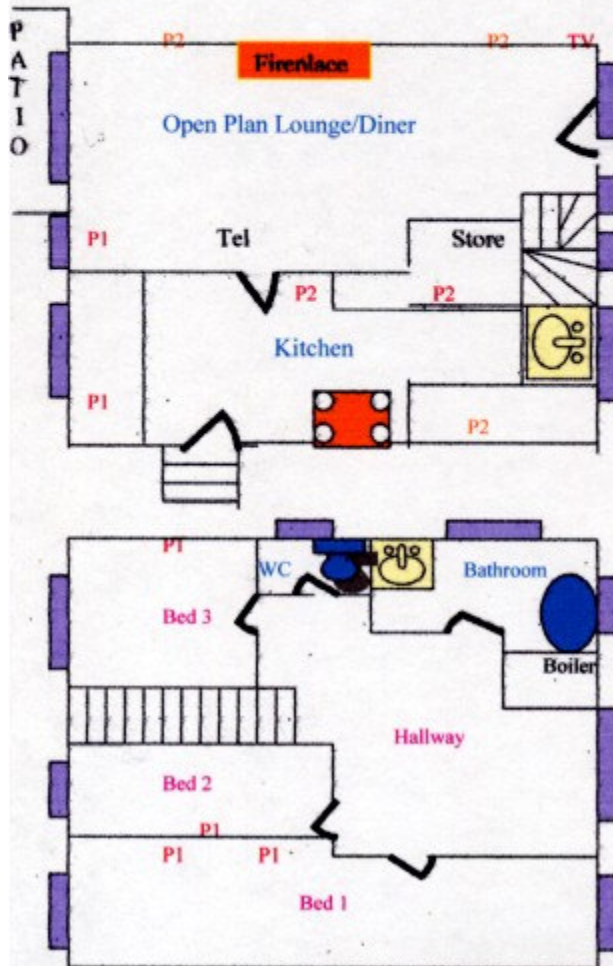
Bed 3 = 1.50cm x 1.50cm x2

Bathroom = 1.00cm x 1.00cm x2

Hallway = 1.10cm 1.50cm x2

Dhekelia Type C, Grade 4

This picture is of a Type C, Grade 4 Married Quarter in Mandalay Road.



Measurements for the Ground floor

Lounge = 4.84m x 5.65m

Kitchen = 3.80m x 2.20m

Windows

Lounge = W 2.18cm x D 2.45cm (x2)

= W 55cm x D 1.32cm (x2)

= W 55cm x D 1.00cm (x2)

Diner = W 1.50cm x D 1.60cm (x2)

Kitchen = W 1.00cm x D 1.30cm (x4)

Key P1 = Power point x 1

P2 = Power Point x2

TV = Aerial socket

Tel = Telephone



Sink



WC



Window

Bath

Measurements for the first floor

Bedroom 1 = 5.50m x 3.50m

Bedroom 2 = 2.20m x 2.00m

Bedroom 3 = 1.30m x 2.90m

Windows

Bed 1 = W 1.50cm x D 1.30cm (x4)

Bed 2 = W 1.50cm x D 1.30cm (x2)

Bed 3 = W 1.00cm x D 1.30cm (x2)

Hall = W 1.50cm x D 1.30cm (x2)

Bath = W 1.00m x D 1.00m (x2)

: = W 50cm x D 1.00m (x2)

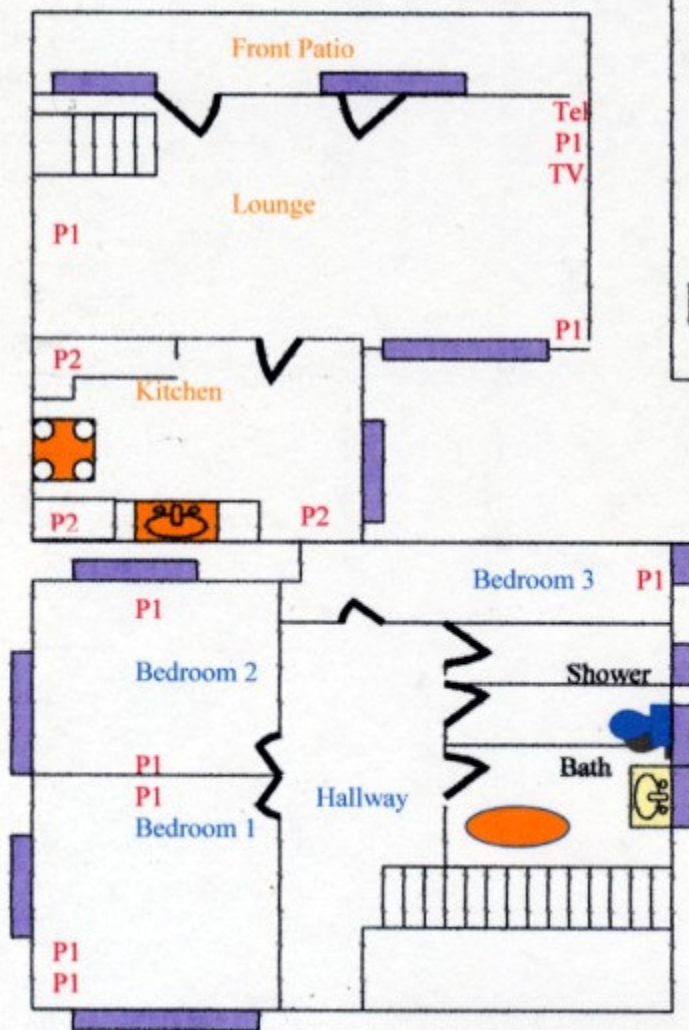
WC = W 50cm x D 1.00m (x2)

Dhekelia Type D, Grade 4

This picture is of a Type D, Grade 4 Married Quarter in Belmont Village



Your quarter is located within Dhekelia Garrison main camp some 10 miles east of Larnaca and its airport. The following facilities are all located within the camp boundaries, Banks, Post office, Med Cen-, Dentist and a large NAAFI. They are within a short walk/drive or alternatively a short bus ride. All Married Quarters and schools are also within the camp bound
www.dhekelia@hivegb.co.uk



Measurements for the ground floor

Living Room = 720m x 470m
 Kitchen = 330m x 29cm

Windows

Patio = W99cm x D220cm (x2)
 Kitchen = W190cm x 240cm (x2)

Key P1 = Power points x1
 P2 = Power points x2
 TV = Aerial socket
 Tel = Telephone



Measurements for the first floor

Bedroom 1 = 3.40m x 390m
 Bedroom 2 = 3.40m x 390m
 Bedroom 3 = 3.13m x 330m
 Hallway = 5.70m x 90m

Windows

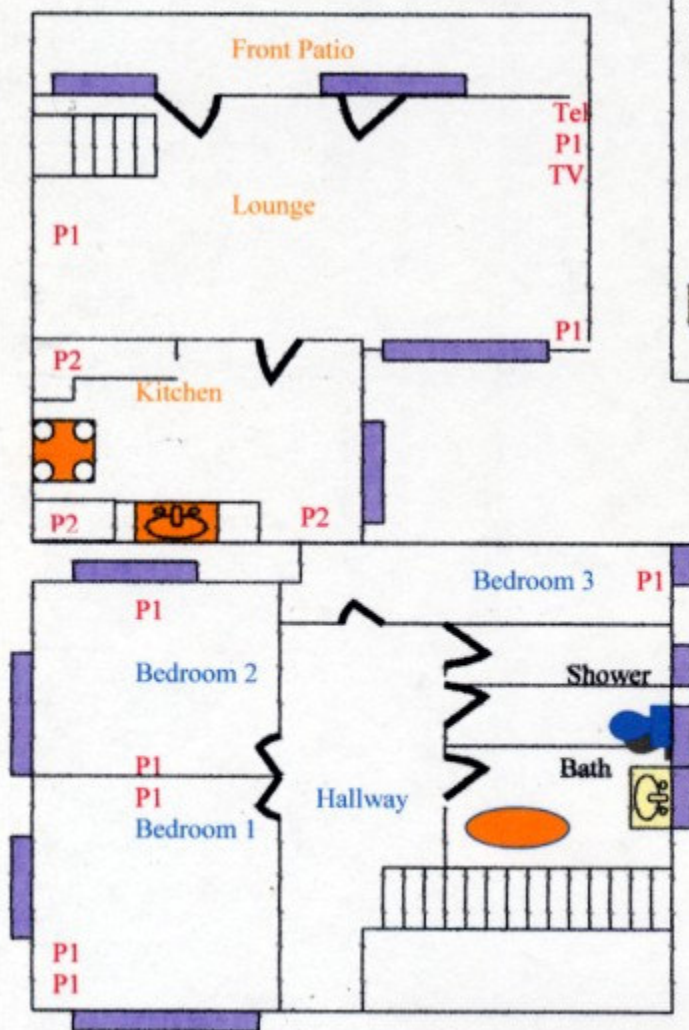
Bed 1 W 95cm x D190cm
 Bed 2 W 90cm x D185cm
 W 80cm x D115cm
 Bed 3 W 80cm x D115cm
 W 90cm x D185cm

Dhekelia Type D, Grade 4

This picture is of a Type D, Grade 4 Married Quarter in Belmont Village



Your quarter is located within Dhekelia Garrison main camp some 10 miles east of Larnaca and its airport. The following facilities are all located within the camp boundaries, Banks, Post office, Med Cen-, Dentist and a large NAAFI. They are within a short walk/drive or alternatively a short bus ride. All Married Quarters and schools are also within the camp bound
www.dhekelia@hivegb.co.uk



Measurements for the ground floor

Living Room = 720m x 470m

Kitchen = 330m x 29cm

Windows

Patio = W99cm x D220cm (x2)

Kitchen = W190cm x 240cm (x2)

Key P1 = Power points x1

P2 = Power points x2

TV = Aerial socket

Tel = Telephone



Measurements for the first floor

Bedroom 1 = 3.40m x 390m

Bedroom 2 = 3.40m x 390m

Bedroom 3 = 3.13m x 330m

Hallway = 5.70m x 90m

Windows

Bed 1 W 95cm x D190cm

Bed 2 W 90cm x D185cm

W 80cm x D115cm

Bed 3 W 80cm x D115cm

W 90cm x D185cm