

HS2 Enabling Works: CSjv Area South EWC

Works Package Manager /
Principal Archaeologist



SKANSKA

Fast Track for Britain's Future



CSjv Area South EWC Priority Works

- Archaeological Trial Trenching in St James's Gardens
- Recording of Funerary Monuments
- Time Capsule Discovery
- Built Heritage Recording in advance of alteration or demolition
- Heritage Agreements/Method Statements in preparation
- Noise Insulation works on GII and GII* Listed Structures
- Trial trenching – Colne Valley
- Community Engagement



St James's Gardens: the brief

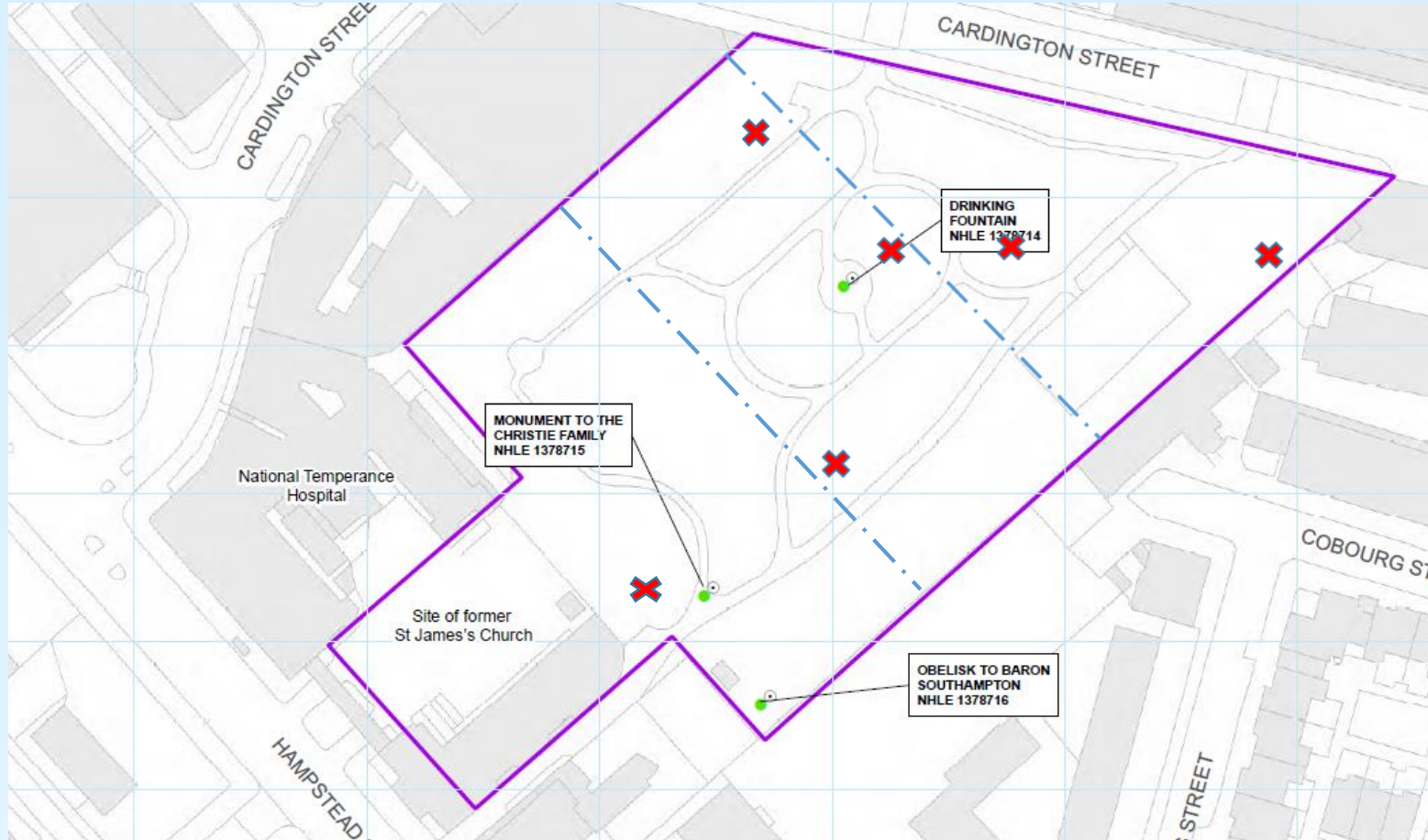
- Six trial trenches to assess preservation, density and depth of burial horizon across three of the four burial grounds
- Intrusive works into berm to check for additional buried funerary monuments
- Record extant funerary monuments
- Design for the archaeological works to maximise safety and efficiency while reducing manual handling risks and screening works from public view as per our U&A and conditions set out by the Archbishops' Council
- Design for temporary works and trenching locations for future tent foundations required as part of main works



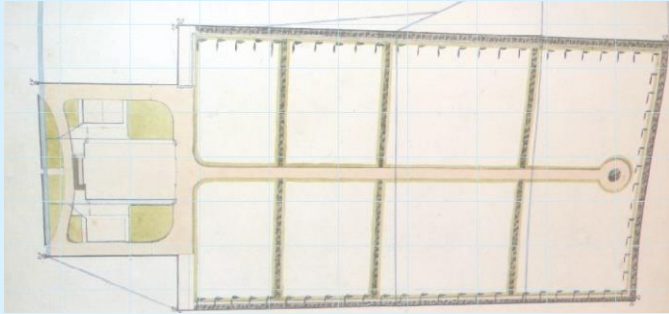
St James's Gardens: Trial Trenching Locations



Location of intrusive works



St James's Gardens



Left: Hand drawn plan for proposed cemetery layout and chapel c. 1780

Below: Etching showing St James's Chapel c. 1793



Above: St James's Gardens c 1890 after the construction of Cardington Street

Left: Bespoke tent with integrated lifting and rescue equipment over trial hole 1



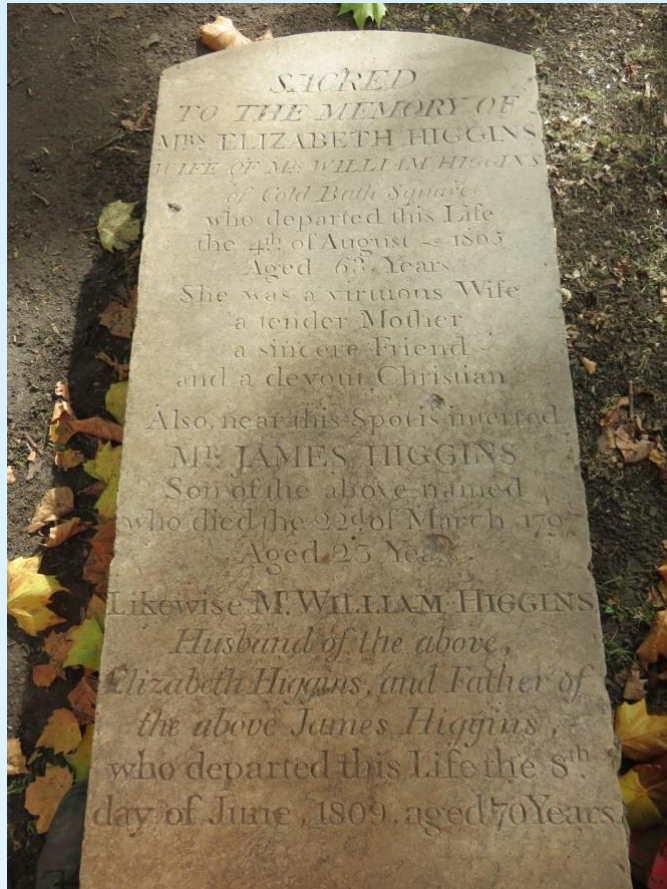
Trial Trench 1

No of burials	Top of burial horizon (bgl)	Deepest burial (bgl)
46	1.9m	4.5m

- Characterised by very wet London Clay. Coffins filled with perched water showed unprecedented levels of preservation.
- Trench 1 sealed by 2m of post-cemetery closure capping material
- A well-preserved grip plate of a two-cherub heads design
- A child's coffin with an internal divider. Presumably this was an 'off the shelf' coffin adapted to fit a smaller occupant
- A Queen Anne doll, dated to the 1830s, found within the coffin of a child burial



Trial Trench 1: Ledger Stone and associated Coffin



Left: Higgins Family ledger stone found in the back of Trench 1

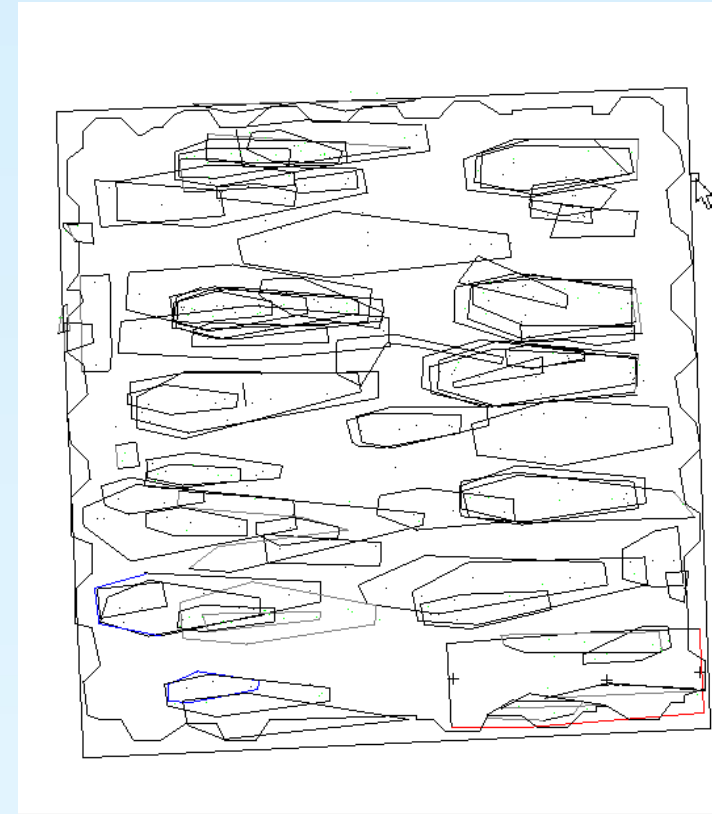
Right: Coffin with breastplate attached bearing the name of Elizabeth Higgins



Trial Trench 2: Boundary of the middle and lower grounds

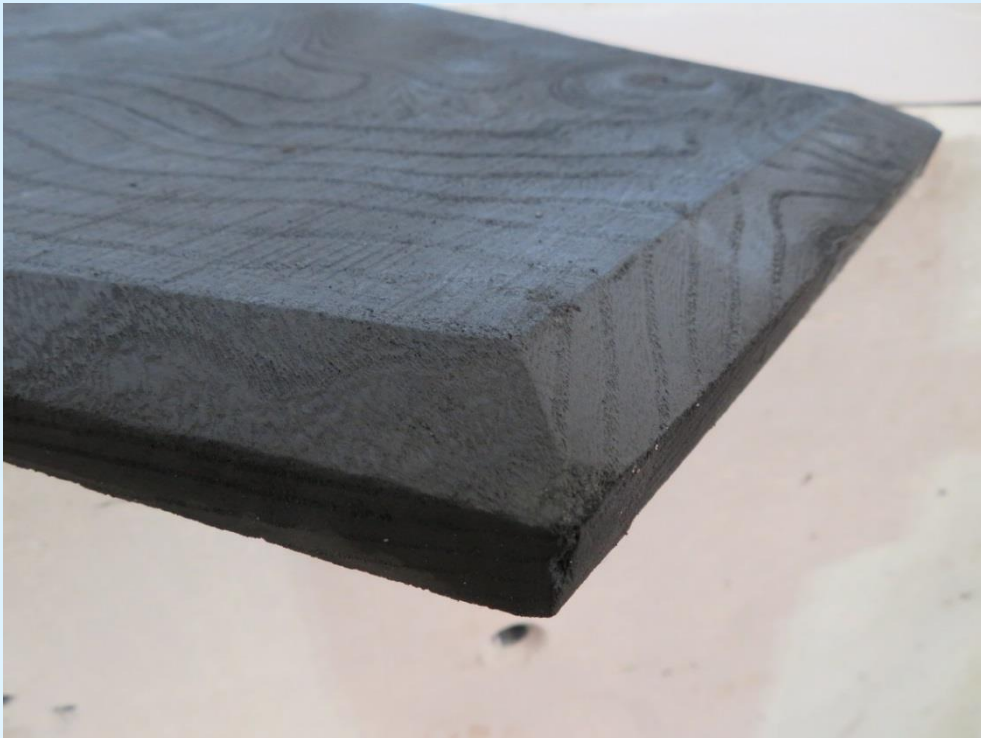
No of burials	Top of burial horizon (bgl)	Deepest burial (bgl)
91	1.6m	3.8m

- Right: Paperless recording allowed a quick visual assessment of the organisation and frequency of coffins in each stack



Trial Trench 2: Coffin Furniture

- Bevelled edge of the inner lid of a double lidded coffin
- Tin-dipped iron coffin plate (rare type)



Trial Trench 2: In situ memorial to the Walker Family



Right: Note the unusual repair to the stone on the left hand side



Trial Trench 3b: the Lower Ground

No of burials	Top of burial horizon (bgl)	Deepest burial (bgl)
59	1.4m	4.4m



- Left: In situ funerary monuments and brick plinths c.1.7m below the modern ground level



Trial Trench 3b: Levels of Preservation

- Lead Coffin plate dating to 1836. A higher status plate than might be typically expected in this area of the cemetery
- Some burials contained pieces of twig and sawdust. These would have been used to mask smells and to soak up any fluids
- A coffin from Trench 3 filled with grass and sawdust
- A sub-adult burial in a poorly preserved coffin (upper level) where the ground was drier and more friable
- At least 5 craniotomies were identified during the trial trenching which is an unusually high number



Trial Trench 4: The Middle Ground

No of burials (in progress)	Top of burial horizon (bgl)	Deepest burial (bgl)
20	1m-1.7m	2.7m (in progress)

- Well preserved coffin in Trench 4, with coffin breastplate and surviving baize fabric held in place by stud work
- Part of a hair comb, used to hold a hairstyle in place rather than for grooming
- A dental bridge from the same burial. The ‘teeth’ seem to be ceramic. There are letters on the tooth in the right of the photo – it is not clear yet if these relate to a manufacturer or are result of recycled ceramic



Trial Trench 5: The Upper Ground

- The remains of five upper class table tombs were discovered during trial trenching

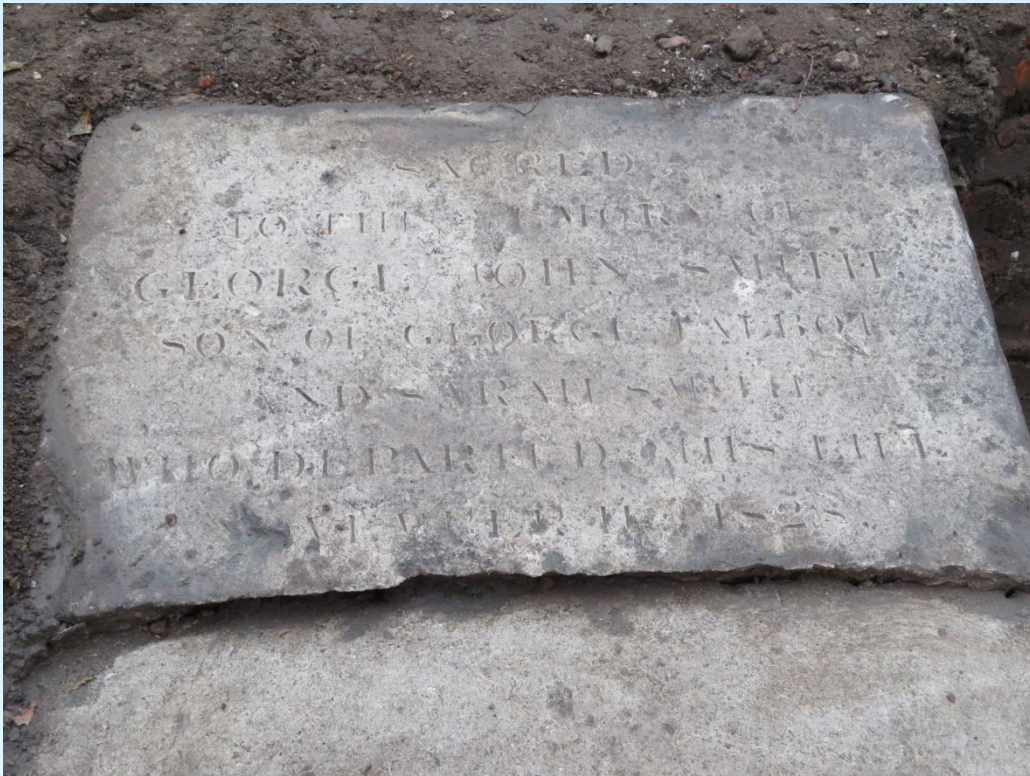


- Part of a substantial base for a burial monument, probably a table tomb



Trial Trench 5: Funerary Monuments

- The inscription on monument to the south of a collapsed vault in Trench 5, commemorating George John Smith
- Damage table tomb dedicated to Susanna, widow of Mr Gabriel Bowers, who died in 1816, aged 72



Trial Trench Summary

- 6 Areas archaeologically investigated
- A further 250+ grave stones identified
- 220 sets of remains excavated
- 22 named individuals identified
- Unprecedented level of preservation of cultural remains found
- Fair – excellent skeletal preservation
- 5 Craniotomies
- Top of burial horizon at between 1.5m – 2m below existing ground level
- Base of burial horizon at 4.9m below existing ground level
- Original drainage shown on 1789 cemetery plan identified in Trench 1



Recording Funerary Monuments



National Temperance Hospital: Time Capsule

- 2 Time Capsules discovered beneath foundation stones for the two older wings of the building



National Temperance Hospital: Time Capsules



Built Heritage Recording

- DB Cargo Shed (Non designated railway asset)
- Park Village East Parapet Wall
- National Temperance Hospital Insull Wing
- Setting Surveys across Euston (done with community involvement)
- GII Listed Monument to the Christie Family
- GII Listed Obelisk to Baron Southampton (now know to be that of Baron Oxmanton)
- In prep: Euston Square Gardens, 14-15 Melton Street, GII* War Memorial and GII Statue of Robert Stephenson

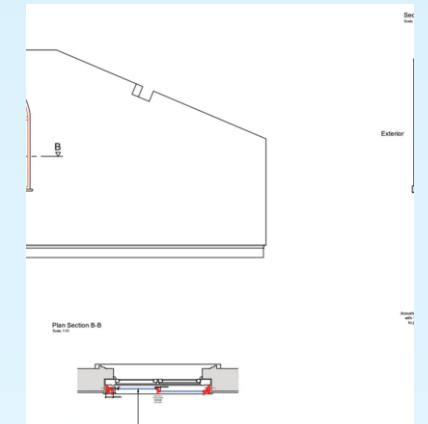
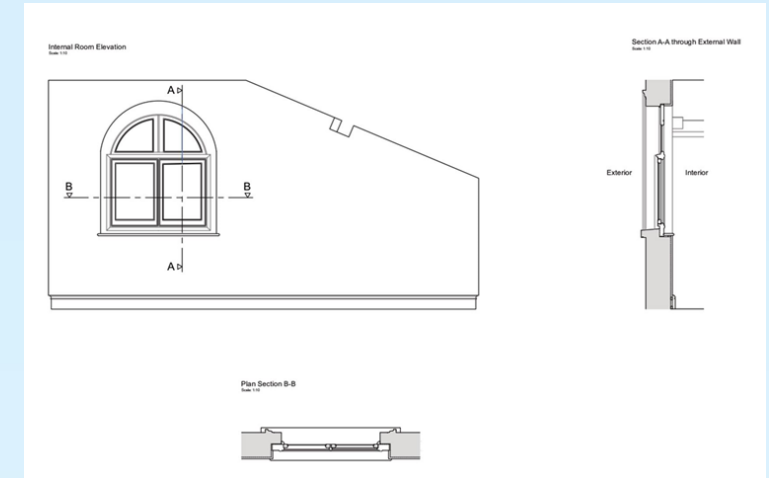


Noise Insulation for Listed Buildings



Figure 8: A view of 34 Park Village East. Windows where internal secondary glazing will be installed are annotated in red.

34 Park Village East – secondary glazing surveys carried out using 3D Photogrammetry and measured survey to produce elevations and detail drawings



S2 Northolt Tunnels



Survey and Trial Trenching at the MSD site. No archaeology identified



Area South EWC 2018

- Construction of encapsulation over St James's Gardens -tent structure including M&E currently in design -start of the main excavation
- Excavation 63,000 burials from St James's Gardens
- Continued recording of Heritage Assets including GII* War Memorial and Listed Statues/public art in Euston Square and Piazza
- Major phase of trial trenching and survey at S2 Northolt Tunnels
- Historic Building recording S4 Old Oak Common
- Community recording of over 400 funerary monuments
- Programme of Schools Engagement
- 3D photogrammetry and measured drawing to discharge Listed Building Consents in respect to Secondary glazing

