

Offshore Wind Opportunities in Tees Valley

An Overview



Contents

To use this interactive pdf simply click on the links or content list to be directed to the relevant pages or use the navigation arrows below.

- Vibrant Offshore Wind Supply Chain

- Ideal Sites with Added Benefits (including Enterprise Zone with Enhanced Capital Allowances)

- Excellent Infrastructure & Connectivity

- Skilled and Affordable Workforce
- Engineering Expertise

- Tees Valley Unlimited
- Support Organisations

- Tees Valley Lifestyle
- Case Studies
- CORE

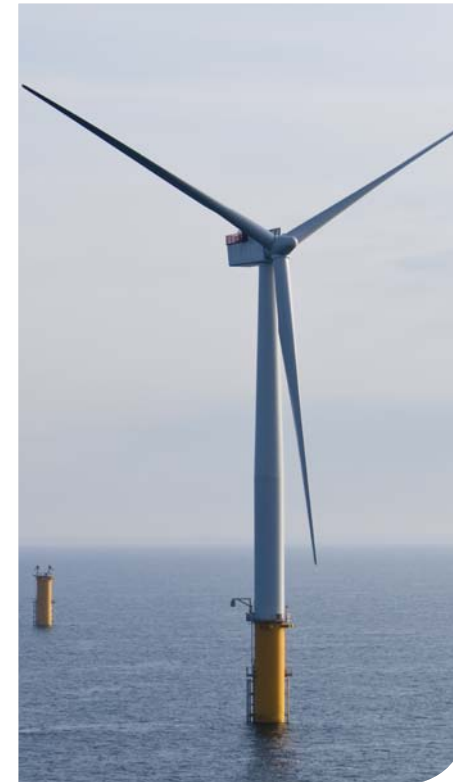
Vibrant Offshore Wind Supply Chain

Supplying offshore wind projects around the globe:

CONTENTS

- 02** Vibrant Offshore Wind Supply Chain
- 04** Ideal Sites with Added Benefits
- 08** Excellent Infrastructure & Connectivity
- 09** Skilled & Affordable Workforce
- 10** Engineering Expertise
- 11** Tees Valley Unlimited
- 12** Comprehensive Business Support
- 13** Tees Valley Lifestyle
- 14** Case Studies
- 16** Centres for Offshore Renewable Engineering (CORE)

- **Sheringham Shoal Wind Farm:** Heerema (Hartlepool) building substation platforms.
- **Lincolnshire Offshore Wind Farm:** MechTool Engineering (Darlington) supplying buildings, fire and blast walls.
- **London Array Wind Farm:** JDR Cables (Hartlepool) providing over 200km of inter-array cables.
- **Robin Rigg Wind Farm:** Sub Aqua Diving Services (Middlesbrough) supplying diving safety consultancy and cable work operations.
- **Germany's BARD Offshore 1 Wind Farm:** CTC Marine (Darlington) providing trenching and installation services.
- **Walney 1 Wind Farm (Irish Sea):** Tekmar (Darlington) producing cable protection devices.
- **Greater Gabard Wind Farm:** Abnormal Load Engineering has a base in Tees Valley where it has provided heaving lifting, jacking and installation services to offshore wind project.



CONTENTS

- 02 Vibrant Offshore Wind Supply Chain
- 04 Ideal Sites with Added Benefits
- 08 Excellent Infrastructure & Connectivity
- 09 Skilled & Affordable Workforce
- 10 Engineering Expertise
- 11 Tees Valley Unlimited
- 12 Comprehensive Business Support
- 13 Tees Valley Lifestyle
- 14 Case Studies
- 16 Centres for Offshore Renewable Engineering (CORE)

Significant New Private Sector Investment in 2010/2011:

- **Tata Europe:** Planning to build a £31.5m wind turbine monopile manufacturing plant.
- **AV Dawson:** Investing £6m in new infrastructure to service the sector, including cranes and deepening the water berths.
- **Tees Alliance Group:** Recently opened a £20m centre to manufacture tower foundations.
- **JDR Cables:** Investing £11m to double the size of its facility in Hartlepool.

Growing Offshore Wind Supply Chain

A recent study of the Tees Valley supply chain showed there is a real potential for growth in the area:

- Potential supply-chain of more than 300 companies employing over 20,000 people.
- 160 Tees Valley firms already directly involved (or actively interested in doing so) in the offshore wind sector.



£70m Private sector investment in offshore wind in Tees Valley in 2010/11.

Ideal Sites with Added Benefits

CONTENTS

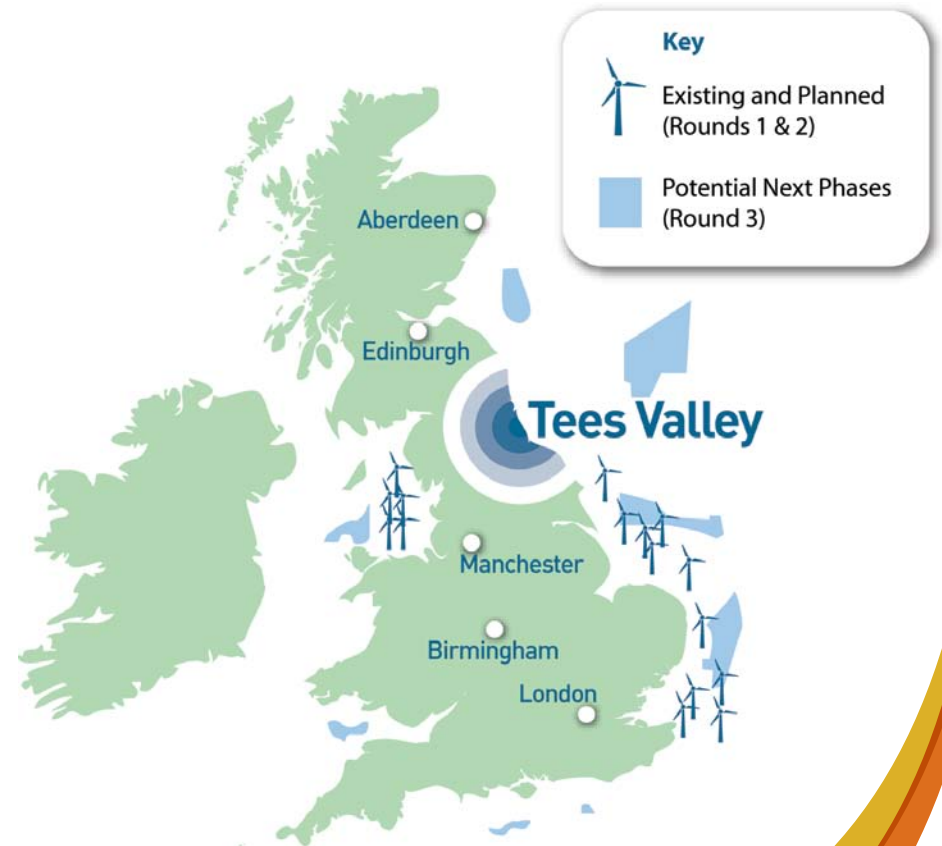
- 02** Vibrant Offshore Wind Supply Chain
- 04** Ideal Sites with Added Benefits
- 08** Excellent Infrastructure & Connectivity
- 09** Skilled & Affordable Workforce
- 10** Engineering Expertise
- 11** Tees Valley Unlimited
- 12** Comprehensive Business Support
- 13** Tees Valley Lifestyle
- 14** Case Studies
- 16** Centres for Offshore Renewable Engineering (CORE)

Hartlepool Docks - Enterprise Zone

- Access via A19 and A689, rail access to berth.
- Enhanced Capital Allowances and Simplified Planning Regime.
- 120 hectares (300 acres) of seafront land.
- £8.5m planned infrastructure investment.
- Existing units available up to 192,000 sq ft, with option for design and build.
- 5 Quays in total; quay length of 900m across 3 berths.
- Fully serviced site.

Oakesway Business Park - Enterprise Zone

- Large site adjacent to the Hartlepool Port.
- 1 mile North West of Hartlepool town centre.
- Easy access to A19 and A1.
- 37 acre site with a net developable area of 25 acres.
- Business Rate Relief.
- Simplified Planning Regime.



CONTENTS

- 02** Vibrant Offshore Wind Supply Chain
- 04** Ideal Sites with Added Benefits
- 08** Excellent Infrastructure & Connectivity
- 09** Skilled & Affordable Workforce
- 10** Engineering Expertise
- 11** Tees Valley Unlimited
- 12** Comprehensive Business Support
- 13** Tees Valley Lifestyle
- 14** Case Studies
- 16** Centres for Offshore Renewable Engineering (CORE)

Seaton Port (Hartlepool)

- Adjacent to Tees River Mouth. Access via A19 and A689.
- 126 acres/51 hectares of land available.
- 11 Quays in total; Quays 10 and 11 total length 306m.
- 15m LAT at Quays 10 & 11.
- Quay 11 has 75 tonne/sqm loading (23mx16m).
- Fully serviced site.

Tees Alliance Group (TAG) - Stockton

- North Bank of the River Tees at Haverton Hill. Access via A66 and A19.
- 42 acre site, recently opened a £20 million offshore wind manufacturing facility.
- 173m x 34m (and 27m high) Assembly Hall with 2 doors.
- Houses specialist automated equipment for the manufacture of large diameter tubulars.

- The first facility of its kind, these will be used in the construction of offshore windmill jacket and monopole foundations.
- Loadout Quay with maximum load out of 6,000 te.
- Holding Basin/wet dock wet dock 250m in length.

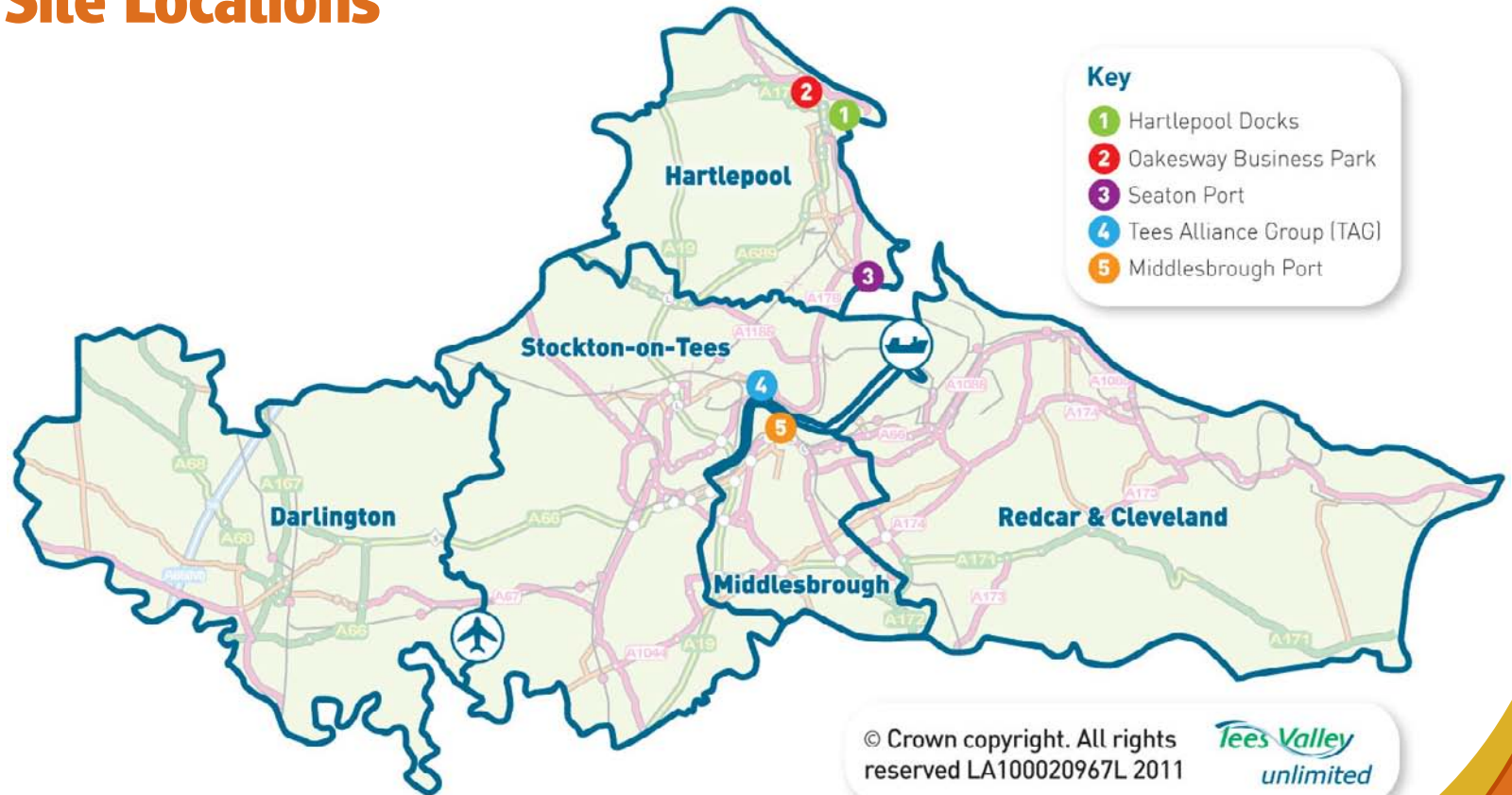
Middlesbrough Port

- South bank of River Tees, Middlesbrough. Access via A66.
- 40 acres/16.2 hectares available.
- Existing units totaling 200,000 sq ft, with option to design and build.
- Eaves height range from 15 ft to 83 ft.
- Quays 1 & 2 total 250m with 35t/sqm.
- Berth depth 12.5m LAT.
- Fully serviced site.

CONTENTS

- 02** Vibrant Offshore Wind Supply Chain
- 04** Ideal Sites with Added Benefits
- 08** Excellent Infrastructure & Connectivity
- 09** Skilled & Affordable Workforce
- 10** Engineering Expertise
- 11** Tees Valley Unlimited
- 12** Comprehensive Business Support
- 13** Tees Valley Lifestyle
- 14** Case Studies
- 16** Centres for Offshore Renewable Engineering (CORE)

Site Locations



CONTENTS

- 02** Vibrant Offshore Wind Supply Chain
- 04** Ideal Sites with Added Benefits
- 08** Excellent Infrastructure & Connectivity
- 09** Skilled & Affordable Workforce
- 10** Engineering Expertise
- 11** Tees Valley Unlimited
- 12** Comprehensive Business Support
- 13** Tees Valley Lifestyle
- 14** Case Studies
- 16** Centres for Offshore Renewable Engineering (CORE)

Enhanced Capital Allowances

First year allowances at 100% up to a maximum of £100m expenditure on plant and machinery to offset against corporation tax if the investment is made between 2012 and 2017.

Business Rate Relief

Annual investment allowance up to £55,000.

Simplified Planning Regime

Development can start straight away - no need for offshore wind manufacturers to apply for planning permission, pay an application fee or wait for planning consent.

Grant for Business Investment (GBI)

Offshore wind projects choosing to locate in Tees Valley may be able to take advantage of GBI grants.

"We aim to play a serious role in the marketplace and we have real confidence that the UK, and of course the North East, will have a major influence on the offshore wind industry."

TAG Energy Solutions

"Everyone in Hartlepool has been very supportive and we continue to build our people and our factory"

JDR

CONTENTS

- 02** Vibrant Offshore Wind Supply Chain
- 04** Ideal Sites with Added Benefits
- 08** Excellent Infrastructure & Connectivity
- 09** Skilled & Affordable Workforce
- 10** Engineering Expertise
- 11** Tees Valley Unlimited
- 12** Comprehensive Business Support
- 13** Tees Valley Lifestyle
- 14** Case Studies
- 16** Centres for Offshore Renewable Engineering (CORE)

Excellent Infrastructure & Connectivity

The Tees Valley has excellent transport links with quick and easy access to all parts of the UK using all major modes of transport – road, rail, air and water. Indeed, the Tees Valley is ideally situated to serve local, regional, national, European or International markets and is connected to major centres of population.

Sea

- Largest exporting port in the country.
- UK's fourth largest port by tonnage.
- Teesport handles over 6,000 ships a year.
- End to end supply-chain solutions.

Road

- A1 (M) and A19 run north south through the region and A66 runs east west.
- Well connected to other major manufacturing centres and major sea ports.

Rail

Freight Services

- EWS, Freightliner and AV Dawson provide rail freight facilities in the area
- Regular container services.
- Trunk rail services between key ports and inland rail freight interchanges within the UK.

Passenger Services

- fast and regular passenger services.

AIR

- Served by two International airports offering a range of services and destinations.

CONTENTS

- 02** Vibrant Offshore Wind Supply Chain
- 04** Ideal Sites with Added Benefits
- 08** Excellent Infrastructure & Connectivity
- 09** Skilled & Affordable Workforce
- 10** Engineering Expertise
- 11** Tees Valley Unlimited
- 12** Comprehensive Business Support
- 13** Tees Valley Lifestyle
- 14** Case Studies
- 16** Centres for Offshore Renewable Engineering (CORE)

Skilled and Affordable Workforce

Tees Valley has an abundant supply of skilled workers at rates often considerably lower than the national average:

- Full time pay in Tees Valley is 91% of the GB average.
- Employees work more hours than the UK average.
- North East staff turnover lower than any other region in the UK.
- Over 400,000 people of working age live within Tees Valley.
- 1.7million workers within easy commuting distance.
- Employment is below the North East and national averages.
- Unemployment rate has increased, demonstrating spare skilled capacity.
- Job Centre Plus data demonstrates a wide labour pool of skilled personnel.

"If a business comes along and says we need hundreds of workers for a new plant in Hartlepool, where will they be trained, we can say there is a £53m college here. We can start training people there now... There is an opportunity in Hartlepool to be creating welders of the future, fabricators of the future as well as hi-tech positions such as turbine technicians"

PD Ports

Working population within 1 hour:
1,625,000

Working population within 30 mins:
668,300

Engineering Expertise

CONTENTS

- 02** Vibrant Offshore Wind Supply Chain
- 04** Ideal Sites with Added Benefits
- 08** Excellent Infrastructure & Connectivity
- 09** Skilled & Affordable Workforce
- 10** Engineering Expertise
- 11** Tees Valley Unlimited
- 12** Comprehensive Business Support
- 13** Tees Valley Lifestyle
- 14** Case Studies
- 16** Centres for Offshore Renewable Engineering (CORE)

World-Class Engineering Further Education in Tees Valley Five leading FE colleges.

- 7,500 students in engineering courses each year. World class facilities.
- More trade apprenticeships and employees undertaking training than the UK average.
- Network of industry-recognised providers.
- Wide range of apprenticeships for the engineering industry.
- Work-Based Learning and bespoke training packages.
- Flexible engineering courses and Foundation Degrees including Renewable Energy Engineering, Electrical and Electronic engineering, Mechanical and Manufacturing Engineering and Fabrication and Welding.

Six universities within one hour, combined with a strong engineering offer from Teesside University

- 6 universities less than 50 miles away.
- £615m invested in facilities since late 1990s.
- 9,000 students taking engineering each year.



Tees Valley Unlimited (TVU)

One thing that really makes Tees Valley stand out as a forward-looking business location is the way that the area looks after its businesses.

CONTENTS

- 02 Vibrant Offshore Wind Supply Chain
- 04 Ideal Sites with Added Benefits
- 08 Excellent Infrastructure & Connectivity
- 09 Skilled & Affordable Workforce
- 10 Engineering Expertise
- 11 Tees Valley Unlimited
- 12 Comprehensive Business Support
- 13 Tees Valley Lifestyle
- 14 Case Studies
- 16 Centres for Offshore Renewable Engineering (CORE)

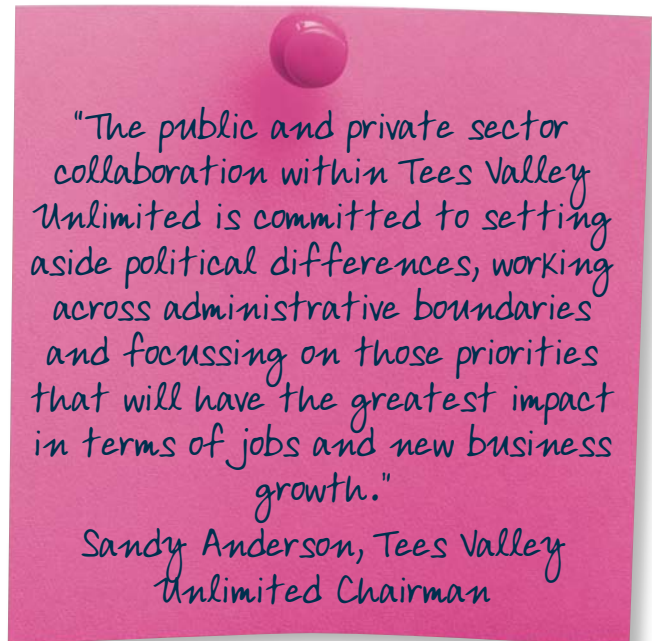
Tees Valley Unlimited www.teesvalleyunlimited.gov.uk

Tees Valley Unlimited's Business Investment Team has a strong track record of attracting investment into the area having helped to:

- Attract over £750million of investment to the area over the past 3 years.
- Assist companies expanding and relocating in the Tees Valley to create and safeguard over 5,000 jobs.
- Attract over £65million of Regional Growth Fund investment for Tees Valley companies.

TVU and partners are on hand to offer the best possible support and advice to help potential inward investors locate to an area with immense possibilities.

Contact the Tees Valley Unlimited Business Investment team on: **01642 524 400**
or email: info@teesvalleyunlimited.gov.uk



Support Organisations

CONTENTS

- 02** Vibrant Offshore Wind Supply Chain
- 04** Ideal Sites with Added Benefits
- 08** Excellent Infrastructure & Connectivity
- 09** Skilled & Affordable Workforce
- 10** Engineering Expertise
- 11** Tees Valley Unlimited
- 12** Comprehensive Business Support
- 13** Tees Valley Lifestyle
- 14** Case Studies
- 16** Centres for Offshore Renewable Engineering (CORE)

Other organisations involved in supporting the offshore wind sector include:

NOF Energy
www.nofenergy.co.uk

The business development organisation for the oil, gas, nuclear and offshore wind sectors.

Tees Valley Engineering Partnership
www.tvcp.co.uk

A business development initiative for engineering.

Narec
www.narec.co.uk

The national centre for the UK dedicated to advancing the development, demonstration and deployment of renewable energy, particularly offshore wind.

TWI
www.twi.co.uk

Organisation delivering world class services in joining materials, engineering and allied technologies.



Tees Valley Lifestyle

CONTENTS

- 02 Vibrant Offshore Wind Supply Chain
- 04 Ideal Sites with Added Benefits
- 08 Excellent Infrastructure & Connectivity
- 09 Skilled & Affordable Workforce
- 10 Engineering Expertise
- 11 Tees Valley Unlimited
- 12 Comprehensive Business Support
- 13 Tees Valley Lifestyle
- 14 Case Studies
- 16 Centres for Offshore Renewable Engineering (CORE)

Unbeatable quality of life

- Tees Valley offers the best of urban living to traditional market towns and villages.
- Local attractions include award winning galleries, museums and sports facilities.
- Spectacular landscapes including part of the North York Moors.

Top-quality Primary and Secondary Education in Tees Valley

- Class sizes that are amongst the lowest in the country.
- GCSE results in Tees Valley have improved faster than the national average.
- Primary schools results are better than the UK equivalent.

Excellent Housing offer

- Good quality executive housing.
- Affordable House prices - bigger houses for your money than in any other area of the UK.



Case Studies

CONTENTS

- 02** Vibrant Offshore Wind Supply Chain
- 04** Ideal Sites with Added Benefits
- 08** Excellent Infrastructure & Connectivity
- 09** Skilled & Affordable Workforce
- 10** Engineering Expertise
- 11** Tees Valley Unlimited
- 12** Comprehensive Business Support
- 13** Tees Valley Lifestyle
- 14** Case Studies
- 16** Centres for Offshore Renewable Engineering (CORE)

Tees Alliance Group (TAG), Stockton-on-Tees

TAG Energy Solutions has recently opened a £20 million offshore wind manufacturing facility at Haverton Hill, Billingham. The new facility, which will employ 400 people on the site of a former shipyard, houses specialist automated equipment for the manufacturer of large diameter cans for offshore turbine foundations.

Able UK, Hartlepool

At the former (Laings) offshore yard site at Seaton Port, Able has developed new marine and terrestrial facilities, investing over £50m since 1996 into this extensive 126 acre facility. It is fully licensed with permission for fabrication, decommissioning and ship-breaking, and the manufacture, assembly and installation of wind turbines.

JDR Cables, Hartlepool

From its Hartlepool base, located on the UK's east coast, JDR supply cables weighing up to 2200 tonnes which can be spooled directly from the factory to offshore cable laying vessels. This new state-of-the-art quayside facility expands JDR's offering to the offshore market.

Heerema, Hartlepool

Heerema Hartlepool, one of the fabrication locations of Heerema Fabrication Group, has been involved in several major offshore wind projects around the UK including the Sheringham Shoal Wind Farm off the Norfolk coast.

Tata Steel, Redcar & Cleveland

Tata Steel has announced plans to build a £31.5million manufacturing plant in Tees Valley that will make steel foundation structures for wind turbines. The facility will produce monopiles.

AV Dawson, Middlesbrough

Middlesbrough-based multimodal haulier AV Dawson is investing more than £6m in a new crane, warehousing, equipment and quayside dredging to grow its share in the renewables sector and boost its infrastructure to support the offshore wind supply-chain.

CONTENTS

- 02** Vibrant Offshore Wind Supply Chain
- 04** Ideal Sites with Added Benefits
- 08** Excellent Infrastructure & Connectivity
- 09** Skilled & Affordable Workforce
- 10** Engineering Expertise
- 11** Tees Valley Unlimited
- 12** Comprehensive Business Support
- 13** Tees Valley Lifestyle
- 14** Case Studies
- 16** Centres for Offshore Renewable Engineering (CORE)

Hartlepool College, www.hartlepoolfe.ac.uk

Has recently moved into a £53m new building with innovative curriculum developments in low carbon technologies and wind energy. The new facility includes a bespoke, state of the art 300m² workshop facilities incorporating an industrial wind turbine and a wind tunnel.

Teesside University www.tees.ac.uk

At Teesside University, there were over 3,700 students in the University's Science and Technology School in 2010 and the University was ranked the best facility in the UK for Mechanical Engineering by The Guardian's 2009 Good University Guide, scoring 10 out of 10 for Added Value.

The University has first-class engineering facilities, including the Innovation Building, a purpose-built, high-quality learning environment with seminar rooms, lecture theatre and specialist engineering laboratories. It is also home to industry-leading engineering research institutes.

Durham University www.dur.ac.uk/ecs

Durham University's School of Engineering (20mins drive from Tees Valley), is rated 3rd in the Times and Independent's league tables of UK engineering schools. It is home to almost 600 undergraduates and 250 postgraduates. Within the school a number of research themes are dedicated to Offshore Wind. The school has worked with a number of organisations, including the Northern Wind Innovation Programme, Narec and offshore wind developers.

Centres for Offshore Renewable Engineering (CORE)



CONTENTS

- 02** Vibrant Offshore Wind Supply Chain
- 04** Ideal Sites with Added Benefits
- 08** Excellent Infrastructure & Connectivity
- 09** Skilled & Affordable Workforce
- 10** Engineering Expertise
- 11** Tees Valley Unlimited
- 12** Comprehensive Business Support
- 13** Tees Valley Lifestyle
- 14** Case Studies
- 16** Centres for Offshore Renewable Engineering (CORE)

- Centres for Offshore Renewable Engineering are partnerships between Central and Local Government and Local Enterprise Partnerships that ensure businesses looking to invest in manufacturing for the renewables industry receive the most comprehensive support possible.
- We have initially focussed on five locations which we know are the focus of the investment enquiries from renewable manufacturing businesses.
- These areas offer:
 - The right infrastructure for offshore wind manufacturing.
 - Access to a skilled workforce.
 - Experienced local supply chain.
 - Committed local leadership
- In addition, some of these areas contain Enterprise Zones, which may provide:
 - Enhanced Capital Allowances.
 - Business rate tax relief for 5 years of up to £55,000 per annum.
 - Simplified planning regimes, for example through Local Development Orders (LDOs). These are flexible planning tools that provide upfront permissions for particular types of development - providing certainty for developers and reducing waiting times and costs.

CONTENTS

- 02** Vibrant Offshore Wind Supply Chain
- 04** Ideal Sites with Added Benefits
- 08** Excellent Infrastructure & Connectivity
- 09** Skilled & Affordable Workforce
- 10** Engineering Expertise
- 11** Tees Valley Unlimited
- 12** Comprehensive Business Support
- 13** Tees Valley Lifestyle
- 14** Case Studies
- 16** Centres for Offshore Renewable Engineering (CORE)

Centres for Offshore Renewable Engineering

- More information on the national offer for investing in offshore renewables can be found on the CORE summary document, available from the BIS website [click here](#). This provides further detail on market size, national schemes of support and the research and development landscape.
- You can download brochures for the five CORE areas on the BIS website [click here](#).





 Tees Valley Unlimited
Cavendish House
Teesdale Business Park
Stockton-on-Tees
Tees Valley
TS17 6QY

 01642 524400

 01642 632001

 info@teesvalleyunlimited.gov.uk

 www.teesvalleyunlimited.gov.uk