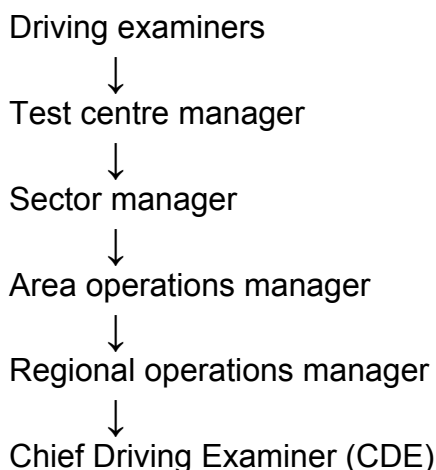


Annex A

our ref : IA/00374/12

Please could you provide me with information on the reporting structure for driving examiners within your organisation? The reason for the request is to familiarise our pupils and the public at large on our Facebook page about the hierarchy for driving examiners.

In the flowchart below, you can find the line management structure in place for driving examiners within DSA.



Please note the direction of the arrow denotes who reports to whom with driving examiners being at the bottom of the reporting structure and the CDE at the top.

The information supplied to you continues to be protected by copyright. You are free to use it for your own purposes, including for private study and non-commercial research, and for any other purpose authorised by an exception in current copyright law. Documents (except photographs) can be also used in the UK without requiring permission for the purposes of news reporting. Any other re-use, for example commercial publication, would require the permission of the copyright holder.

Most documents supplied by the Driving Standards Agency will be protected by Crown Copyright. Most Crown copyright information can be re-used under the Open Government Licence (<http://www.nationalarchives.gov.uk/doc/open-government-licence/>). For information about the OGL and about re-using Crown Copyright information please see The National Archives website - <http://www.nationalarchives.gov.uk/information-management/uk-gov-licensing-framework.htm> .

Copyright in other documents may rest with a third party. For information about obtaining permission from a third party see the Intellectual Property Office's website at www.ipo.gov.uk.