

Monthly Statistics of Building Materials and Components

August 2012

No. 450

NOTES

In tables where figures have been rounded to the nearest final digit, there may be an apparent slight discrepancy between the sum of the constituent items and the total as shown.

Symbols. The following symbols have been used throughout.

- | | |
|-----------------------|-------------------|
| .. = not available | (P) = provisional |
| - = nil or negligible | (R) = revised |

All figures are subject to revisions.

Unless otherwise stated, revisions are due to more complete information from late returns. If any figures are revised by 5% or more from the previously published value, an explanation will be provided.

The United Kingdom Statistics Authority has designated these statistics as National Statistics, in accordance with the Statistics and Registration Service Act 2007 and signifying compliance with the Code of Practice for Official Statistics.

Designation can be broadly interpreted to mean that the statistics:

- meet identified user needs;
- are well explained and readily accessible;
- are produced according to sound methods, and
- are managed impartially and objectively in the public interest.

Unless otherwise stated, the statistics published in this volume have been collected by the Office for National Statistics on behalf of the Department for Business, Innovation & Skills.

Lead Statistician: James Liley

For enquiries or further information about the contents of this publication please contact:

Construction Market Intelligence, 1 Victoria Street,
London, SW1H 0ET;
Telephone : 020 - 7215 - 6221
E-mail : materialstats@bis.gsi.gov.uk.

URN 12/313h

5 September 2012

CONTENTS

	<u>Page</u>
Table 1 : Construction Material Price Indices	1
Table 2 : Price Indices of Construction Materials – monthly	2 & 3
Table 3 : Price Indices of Construction Materials – annual averages	4
Table 4 : Sales of Sand and Gravel in Great Britain	5
Table 5 : Sales of Sand and Gravel by English Regions, Wales and Scotland	6 & 7
Table 6 : Sales of Sand and Gravel by English and Welsh Counties and Scottish Regions	8 & 9
Table 7 : Slate : Production, Deliveries and Stocks	10
Chart 1 : Deliveries of Sand & Gravel and Ready-Mixed Concrete	11
Table 8 : Cement and Clinker : Production, Deliveries and Stocks	12
Chart 2 : Deliveries of Bricks, Concrete Building Blocks and Cement	13
Table 9 : Bricks : Production, Deliveries and Stocks for Great Britain	14 & 15
Table 10 : Bricks : Production, Deliveries and Stocks by English Regions, Wales and Scotland	16 to 19
Table 11 : Concrete Building Blocks : Production, Deliveries and Stocks for Great Britain	20 & 21
Table 12 : Concrete Building Blocks : Production, Deliveries and Stocks by English Regions, Wales and Scotland	22 & 23
Table 13 : Concrete Roofing Tiles and Ready-Mixed Concrete	24
Chart 3 : Comparison of Imports and Exports	25
Table 14 : Value of Overseas Trade in Selected Materials and Components for Constructional Use : Imports (cif) and Exports (fob)	26 to 35

Table 1: Construction Material Price Indices

United Kingdom	2005 = 100					
	2007	2008	2009	2010	2011	2012
(a) New Housing						
January	109.8	115.3	119.7	122.3	130.1	134.9
February	111.7	116.8	120.6	122.9	131.2	135.5
March	112.4	117.5	120.6	123.4	132.0	137.0
April	112.3	118.2	120.2	125.2	132.6	137.3
May	113.7	119.0	119.8	127.2	133.4	137.6 (P)
June	114.4	118.7	119.5	128.3	134.6	136.9 (P)
July	115.2	120.0	119.1	129.0	135.0	136.4 (P)
August	116.3	120.5	120.2	129.5	135.7	
September	116.3	120.4	121.0	129.9	135.6	
October	116.4	121.1	121.7	129.8	135.8	
November	116.0	120.4	122.6	130.2	135.6	
December	115.8	119.7	122.3	129.9	135.2	
Annual Average	114.2	119.0	120.6	127.3	133.9	
(b) Other New Work						
January	110.1	114.3	122.9	124.6	135.1	144.5
February	111.7	116.2	122.1	125.0	137.1	145.1
March	112.1	117.3	121.6	125.9	139.1	145.1
April	112.0	119.2	120.7	129.4	141.3	145.3
May	112.9	121.6	120.7	132.0	142.5	146.8 (P)
June	113.3	123.7	120.7	133.8	143.5	143.7 (P)
July	113.9	126.4	120.7	133.1	143.4	143.6 (P)
August	114.8	127.7	120.9	132.8	143.6	
September	114.4	128.6	121.8	132.9	143.5	
October	114.5	129.3	123.5	132.5	143.3	
November	114.0	126.6	125.3	132.3	143.0	
December	113.6	124.7	125.0	132.3	143.3	
Annual Average	113.1	123.0	122.2	130.6	141.6	
(c) Repair and Maintenance						
January	111.0	116.0	122.1	125.2	134.3	140.3
February	112.9	117.2	122.0	126.1	135.7	141.2
March	113.5	117.9	121.6	126.4	136.7	142.6
April	113.3	119.2	121.2	128.4	137.6	143.1
May	114.4	120.4	121.0	131.0	138.5	143.1 (P)
June	115.3	121.2	120.7	132.2	139.6	142.4 (P)
July	116.0	122.9	120.6	132.9	140.4	141.7 (P)
August	116.9	123.7	121.7	133.4	141.2	
September	117.2	123.8	122.8	133.7	140.9	
October	117.2	124.7	123.9	133.7	141.1	
November	116.6	123.5	125.2	134.2	140.9	
December	116.4	122.4	125.0	133.8	140.7	
Annual Average	115.1	121.1	122.3	130.9	139.0	
(d) All Work						
January	110.6	115.3	122.5	124.6	134.2	141.8
February	112.3	116.9	122.0	125.2	135.9	142.2
March	112.8	117.9	121.6	125.9	137.4	143.5
April	112.6	119.2	121.0	128.5	139.2	143.8
May	113.8	121.0	120.9	131.0	140.2	144.2 (P)
June	114.3	122.3	120.7	132.6	141.3	142.7 (P)
July	114.7	124.4	120.6	132.4	141.5	142.2 (P)
August	115.8	125.7	121.1	132.5	141.9	
September	116.0	126.2	122.1	132.5	141.7	
October	116.0	126.9	123.4	132.2	141.6	
November	115.5	125.0	124.9	132.4	141.3	
December	115.2	123.5	124.7	132.0	141.5	
Annual Average	114.1	122.0	122.1	130.2	139.8	

Note: These indices are weighted averages of Producer Price Indices. They do not include electrical or mechanical engineering materials.

Source ONS/BIS

PRICES

Table 2: Price Indices of Construction Materials

United Kingdom

	2011						2012	
	Jul	Aug	Sep	Oct	Nov	Dec	Jan	
AGGREGATES								
Crushed rock	- including levy	120.0	123.9	122.6	123.1	121.8	123.0	122.9
	- excluding levy	120.0	125.2	122.7	123.0	121.5	123.3	122.8
Sand & gravel	- including levy	122.1	121.6	122.7	123.8	123.4	123.4	128.4
	- excluding levy	121.7	121.2	122.4	123.6	123.2	123.2	130.0
Coated roadstone	- excluding levy	140.4	141.6	139.5	139.6	140.0	141.0	152.4
CEMENT AND CONCRETE								
Cement		135.5	135.7	135.6	135.8	136.0	136.2	140.8
Ready-mixed concrete		114.1	114.5	114.7	115.3	114.7	114.6	117.2
Pre-cast concrete products		121.7	121.1	120.8	120.9	120.6	120.6	121.1
	of which : Blocks, bricks, tiles & flagstones	126.3	125.4	125.0	125.1	125.2	125.2	125.9
Concrete reinforcing bars		171.0	173.1	174.4	171.6	170.0	167.9	171.5
CLAY PRODUCTS								
All Bricks		120.9	120.8	120.9	120.4	119.8	119.4	119.1
Ceramic tiles *		91.1	90.8	90.8	90.7	90.7	90.7	89.2
Ceramic sanitaryware *		148.9	148.5	148.8	148.8	148.8	148.8	151.2
TIMBER AND JOINERY								
Imported sawn or planed wood		155.7	156.1	156.1	153.7	153.0	152.1	150.6
Imported plywood		118.3	117.2	118.7	118.1	118.9	117.0	116.9
Sawn wood **		144.0	144.6	143.8	142.5	141.2	141.5	141.0
Particle Board **		137.3	137.0	137.5	137.5	136.6	137.0	136.3
Builders woodwork **		129.7	130.2	130.4	131.0	131.3	131.8	132.9
	of which : Doors & windows **	136.7	137.4	137.7	137.8	138.1	139.3	141.8
METAL PRODUCTS								
Fabricated structural steel		135.7	134.8	134.1	131.8	130.8	128.2	127.9
Doors & windows **		93.0	92.9	92.8	98.2	102.4	102.7	102.6
Central heating boilers **		117.6	117.6	118.1	118.1	118.1	118.4	118.6
Taps and Valves for sanitaryware *		173.8	172.7	170.1	171.3	171.3	171.3	174.4
PLASTIC PRODUCTS								
Pipes and fittings (rigid) **		127.5	128.9	130.2	130.5	129.4	129.1	129.2
Pipes and fittings (flexible) **		135.2	135.1	135.2	135.2	135.4	135.4	136.2
Sanitaryware *		116.5	116.5	116.5	116.5	116.5	116.5	116.7
Doors & windows **		111.2	112.2	112.3	112.3	112.2	112.3	112.4
OTHER BUILDING MATERIALS								
Asphalt products *		181.6	179.9	180.4	181.9
Insulating materials (thermal or acoustic)		109.3	109.4	112.7	113.9	114.8	115.0	115.3
Paint (aqueous)		132.1	131.1	132.0
Paint (non-aqueous)		121.5	122.5	122.6	122.6	125.9	125.9	127.8
Lighting equipment for buildings *	
Lighting equipment for roads **		109.0	109.0	107.4	109.1	111.4	113.0	113.0
Electric water heaters *		142.2	142.6	145.2	145.2	143.8	145.1	145.2
Kitchen furniture		114.5	115.2	115.2	116.0	115.9	116.0	116.4

Notes : 1. Most of these indices, which are compiled by the Office for National Statistics, are a selection of producer price indices.

The complete list is available online at www.statistics.gov.uk, by searching for the reference MM22.

*The Office for National Statistics state that these Indices are based on relatively few quotes and in the long term should not be relied upon for contractual purposes.

** These index values are considered less reliable mainly due to lack of market coverage.

PRICES

2005=100

Feb	Mar	Apr	May	Jun (P)	Jul (P)	
						AGGREGATES
123.2	124.3	123.9	121.7	121.8	121.8	Crushed rock - including levy
122.8	124.3	123.8	121.2	121.1	121.1	- excluding levy
128.2	129.1	128.2	126.2	129.7	129.7	Sand & gravel - including levy
129.5	131.2	129.8	127.3	130.9	130.9	- excluding levy
152.3	153.7	153.4 (R)	153.4	153.4	153.4	Coated roadstone - excluding levy
						CEMENT AND CONCRETE
141.3	142.2 (R)	144.7 (R)	145.4	145.6	145.1	Cement
118.4	118.8	118.9	118.5	117.8	117.6	Ready-mixed concrete
122.2	122.5	122.5	122.9	122.9	123.1	Pre-cast concrete products
127.5	127.7	128.3	128.7	128.8	128.8	of which : Blocks, bricks, tiles & flagstones
172.3	170.6	168.9	166.4	164.3	162.6	Concrete reinforcing bars
						CLAY PRODUCTS
123.7	123.6	125.0	122.6	124.6	125.2	All Bricks
89.5	89.5	89.7	90.3	94.0	94.0	Ceramic tiles *
156.2	156.2	160.6	160.7	160.1	159.2	Ceramic sanitaryware *
						TIMBER AND JOINERY
150.0	151.1	152.6	152.5	152.2	152.0	Imported sawn or planed wood
116.6	119.2	122.3	122.2	121.8	124.5	Imported plywood
141.0	141.6	143.1	142.8	143.3	145.5	Sawn wood **
138.4	138.5	139.3	140.0	140.9	140.7	Particle Board **
133.5	130.6 (R)	131.2 (R)	131.3	131.6	131.8	Builders woodwork **
143.1	135.6 (R)	136.2 (R)	136.1	136.1	137.0	of which : Doors & windows **
						METAL PRODUCTS
128.5	130.1	131.3	130.8	131.0	..	Fabricated structural steel
101.7	101.5	101.5	101.4	101.2	101.2	Doors & windows **
120.0	120.0	118.6	118.6	118.6	118.6	Central heating boilers **
174.4	174.4	174.4	174.0	Taps and Valves for sanitaryware *
						PLASTIC PRODUCTS
128.6	131.0	130.9	130.7	131.0	132.5	Pipes and fittings (rigid) **
136.3	136.3	136.8	136.7	136.8	136.6	Pipes and fittings (flexible) **
117.0	117.6	117.6	118.6	118.6	118.6	Sanitaryware *
112.3	112.5	112.5	112.5	112.6	112.5	Doors & windows **
						OTHER BUILDING MATERIALS
..	Asphalt products *
117.7	117.9	117.1	116.7	117.2	116.8	Insulating materials (thermal or acoustic)
133.8	133.9	134.6	133.8	133.7	134.1	Paint (aqueous)
130.3	130.0	130.0	131.0	131.0	131.0	Paint (non-aqueous)
..	Lighting equipment for buildings *
112.9	112.5	114.5	114.5	114.5	114.5	Lighting equipment for roads **
145.2	145.2	145.0	146.4	146.3	148.6	Electric water heaters *
116.8	116.9	117.1	117.1	117.2	117.1	Kitchen furniture

Source : ONS

Note: Due to the change from SIC03 to SIC07 the composition of the Aggregate, Wood and Coated Roadstone (excluding levy) Indices has been altered.

As such we will publish the Previous Indices alongside the Current Indices.

PRICES

Table 3: Price Indices of Construction Materials - Annual Averages

United Kingdom		2005=100					
		2006	2007	2008	2009	2010	2011
AGGREGATES							
Crushed rock	- including levy	110.0	115.5	121.0
	- excluding levy	103.1	110.8	121.0
Sand & gravel	- including levy	116.2	121.1	121.8
	- excluding levy	115.8	121.1	121.5
Coated roadstone	- including levy	108.2	113.8	130.0	140.8
	- excluding levy	107.5	113.7	129.7	140.4	..	140.0
Previous Index Crushed rock	- including levy	96.1	95.2	103.4	112.3
	- excluding levy	94.5	93.6	100.6	108.4
Previous Index Sand & Gravel	- including levy	105.3	109.9	117.5	112.0
	- excluding levy	105.7	110.9	116.3	107.5
CEMENT AND CONCRETE							
Cement		108.8	114.7	128.4	138.5	133.2	135.3
Ready-mixed concrete		107.7	106.7	113.4	110.8	110.5	113.8
Plasterboard etc		99.3	101.8	104.7
Pre-cast concrete products		102.3	110.6	114.4	118.7	117.4	120.9
	of which: Blocks, bricks, tiles & flagstones	103.3	112.8	115.4	121.1	121.0	125.2
Concrete re-inforcing bars		112.9	129.8	158.3	125.9	144.6	168.6
Fibre Cement Products		106.7	116.8	124.2
CLAY PRODUCTS							
All Bricks		104.3	111.1	109.0	117.2	118.8	119.3
Ceramic tiles		102.0	84.8	81.0	82.6	90.1	91.0
Ceramic sanitaryware		102.5	112.6	119.9	130.7	134.4	145.9
TIMBER AND JOINERY							
Imported sawn or planed wood		127.9	152.5	154.0
Imported plywood		110.2	119.0	116.9
Previous Index Imported Softwood		107.9	133.6	123.6	127.5
Previous Index Imported Plywood		100.8	106.5	120.7	124.1
Sawn Wood		103.1	122.0	127.8	118.7	135.1	141.7
Particle Board		102.6	112.7	113.8	111.4	117.3	133.0
Builders woodwork		102.2	108.0	113.6	119.7	125.5	129.8
	of which						
	Doors & windows	101.7	108.7	116.7	127.1	130.9	136.6
METAL PRODUCTS							
Fabricated structural steel		99.8	118.1	137.2	106.0	117.9	132.3
Doors & windows		101.2	87.5	87.0	89.8	91.2	95.2
Screws etc		106.1	105.9	106.6
Other builders' ironmongery		102.4	105.3	108.5
Central heating boilers		102.3	105.0	106.3	109.8	113.4	117.6
Central heating pumps		108.2	114.5	120.2
Taps & valves (domestic)		136.6	152.1	158.2	168.9
Metal sanitaryware		103.5	108.3	106.3
Copper pipes		168.1	163.2	154.1
PLASTIC PRODUCTS							
Pipes and fittings (rigid)		103.9	112.2	118.1	121.4	121.5	127.3
Pipes and fittings (flexible)		104.4	110.6	115.3	129.9	130.3	134.1
Sanitaryware		100.9	102.6	112.0	113.7	114.7	116.1
Doors & windows		101.3	103.5	106.2	107.9	108.1	110.8
Floor covering		107.8	109.8
OTHER BUILDING MATERIALS							
Asphalt products		120.6	132.2	140.4	151.4	162.1	..
Insulating materials (thermal or acoustic)		102.5	106.0	105.6	104.0	103.2	109.6
Paint (aqueous)		101.7	104.6	112.7	118.3
Paint (non-aqueous)		100.8	102.6	110.0	113.0	114.0	121.9
Lighting equipment for buildings		102.3	107.4	107.5	..
Lighting equipment for roads		98.7	100.9	105.2	112.3	110.6	110.7
Electric heating apparatus		101.8	105.4	112.0
Electric water heaters		111.6	119.8	122.3	132.6	136.7	142.5
Kitchen furniture		96.7	99.7	103.6	106.6	109.1	112.3

Source : ONS

Note 1: Due to the change from SIC03 to SIC07 the composition of the Aggregate and Wood Indices has been altered. As such we will publish the Previous Indices alongside the Current Indices.

Note 2: These indices, which are compiled by the Office for National Statistics, are a selection of producer price indices. The complete list is published monthly by the ONS in the Business Monitor MM22.

MINING AND QUARRYING

Table 4 : Sales of Sand and Gravel in Great Britain

Great Britain		Thousand tonnes					
	Sand		Gravel	Sand & Gravel	Sand, Gravel & Hoggin	Sand & Gravel	of which
	for Building	for Concreting	for Concreting & other uses	for Coating	for Fill	Total	Marine-Dredged
2001	13,926	33,675	36,799	2,596	10,460	97,456	13,611
2002	11,152	30,334	35,642	2,106	6,279	85,513	12,833
2003	11,474	31,349	31,725	1,493	6,498	82,539	12,249
2004	11,017	32,366	30,184	1,380	6,399	81,346	12,996
2005	12,419	30,704	30,648	1,569	5,173	80,513	13,025
2006	9,499	29,893	31,963	2,346	4,195	77,896	13,974
2007	8,649	29,803	31,114	1,695	4,254	75,515	13,777
2008	8,864	28,922	28,297	74,651	12,582
2009	7,270	21,582	58,482	9,589
2010	6,074	19,887	54,530	9,341
2011	6,041	23,489	57,062	11,169
2006 Q2	2,582	8,126	9,032	623	1,174	21,537	4,531
Q3	2,603	7,725	8,602	640	1,144	20,714	3,498
Q4	2,125	6,942	7,271	560	958	17,856	3,018
2007 Q1	2,081	6,919	7,242	443	904	17,589	3,177
Q2	2,305	7,762	8,202	432	1,179	19,880	3,596
Q3	2,304	7,829	8,191	398	1,162	19,884	3,675
Q4	1,959	7,293	7,479	422	1,009	18,162	3,329
2008 Q1	2,151	7,156	7,286	379	1,180	18,152	3,035
Q2	2,385	7,724	7,668	456	2,041	20,274	3,541
Q3	2,279	7,644	7,091	19,341	3,337
Q4	2,049	6,398	6,252	490	1,695	16,884	2,669
2009 Q1	1,727	5,313	5,330	695	1,566	14,631	2,389
Q2	1,916	5,637	5,756	15,359	2,637
Q3	1,992	5,598	14,878	2,457
Q4	1,635	5,034	1,432	13,614	2,106
2010 Q1	1,539	4,952	13,711	2,131
Q2	1,585	4,983	13,940	2,444
Q3	1,584	5,268	14,112	2,592
Q4	1,366	4,684	12,767	2,174
2011 Q1	1,572	5,665	14,150	2,746
Q2	1,579	6,127	5,291	14,831	2,923
Q3	1,533	6,085	5,160	14,684	2,937
Q4	1,357	5,612	4,719	13,397	2,563
2012 Q1	1,481	5,635	5,039	13,894	2,675
Q2 (P)	1,722	5,772	5,575	14,626	2,621

Note : The figures above are from a quarterly sample inquiry whereas those below are from the Annual Minerals Raised Inquiry, a census.
quarterly inquiry.

1999	11,356	31,730	31,614	2,585	10,924	88,209	13,424
2000	11,758	31,167	31,797	2,461	12,051	89,234	14,356
2001	11,515	31,656	35,135	2,257	7,647	88,210	13,611
2002	11,190	31,224	32,434	2,031	5,842	82,721	12,832
2003	11,851	31,411	30,236	1,766	4,957	80,221	12,131
2004	10,688	32,529	32,346	2,437	8,058	86,057	12,996
2005	11,558	29,848	32,163	2,172	6,651	82,392	13,024
2006	9,907	29,815	31,002	2,648	6,869	80,242	13,974
2007	9,877	30,202	29,350	2,636	6,436	78,501	13,777
2008	8,527	26,885	23,388	2,222	11,106	72,127	12,621
2009	6,296	21,570	19,553	2,270	6,021	55,709	9,592
2010	6,110	20,947	18,540	2,112	6,621	54,330	9,341

MINING AND QUARRYING

Table 5 : Sales of Sand and Gravel by Standard region, Wales and Scotland

	Sand for Building	Sand for Concreting	Gravel for Concreting & other uses	Sand & Gravel for Coating	Sand, Gravel & Hoggin for Fill	Sand & Gravel Total	of which Marine- Dredged
(a) Q1 2012							
North East	39	..	498
Yorkshire & the Humber	130	328	301	..	60
North West	166	242	..	28	27
West Midlands	160	610	577	1,441	0
East Midlands	110	643	69	1,301	0
East of England	206	1,020	889	..	158
South East	248	1,358	1,549	54	340	3,549	2,173
South West	165	654	221	1,274	114
Wales	77	..	82	..	26	360	142
Scotland	180	482	491	160	272	1,585	0
Great Britain	1,481	5,635	5,039	13,894	2,675
of which marine-dredged	122	1,263	1,199	2,675	
(b) Q1 2011							
North East	21	92
Yorkshire & the Humber	124	326	306	..	88
North West	190	238	..	29	..	497	26
West Midlands	148	639	593	1,472	0
East Midlands	109	598	490	1,370	0
East of England	242	1,023	900	..	179
South East	266	1,352	1,680	53	223	3,574	2,181
South West	160	689	235	1,495	122
Wales	106	..	85	..	20	345	174
Scotland	206	522	560	148	213	1,649	0
Great Britain	1,572	5,665	14,150	2,746
of which marine-dredged	127	1,321	2,746	

Note : Regions refer to Government Office Regions

MINING AND QUARRYING

Thousand tonnes

	Sand		Gravel	Sand & Gravel	Sand, Gravel & Hoggin	Sand & Gravel	of which
	for Building	for Concreting	for Concreting & other uses	for Coating	for Fill	Total	Marine-Dredged
(c) Annual 2011							
North East	100	270
Yorkshire & the Humber	519	1,374	1,277	..	393
North West	754	123	..	1,940	96
West Midlands	505	2,458	2,358	5,695	0
East Midlands	443	2,594	1,962	5,673	0
East of England	950	4,184	3,586	..	786
South East	1,050	5,839	6,509	182	..	14,585	8,836
South West	555	2,779	5,795	502
Wales	428	1,671	740
Scotland	737	2,103	2,467	451	859	6,617	0
Great Britain	6,041	23,489	57,062	11,169
of which marine-dredged	514	5,418	11,169	
(d) Annual 2010							
North East	71	136
Yorkshire & the Humber	455	..	1,160	2,104
North West	873	167	..	1,956	97
West Midlands	..	2,136	2,624	5,704	0
East Midlands	438	2,380	2,106	236	259	5,419	0
East of England	871	3,180	3,571	..	674
South East	945	4,756	5,567	214	969	12,451	7,249
South West	538	2,072	1,132	5,697	453
Wales	548	175	1,730	732
Scotland	..	2,130	1,940	441	..	5,942	0
Great Britain	6,074	19,887	54,530	9,341
of which marine-dredged	534	4,300	9,341	

Note : Regions refer to Government Office Regions

MINING AND QUARRYING

Table 6 : Sales of Sand and Gravel by English & Welsh County and Scottish Region

Thousand tonnes

	2010	2011	2012			
	Quarter 4	Quarter 1	Quarter 2	Quarter 3	Quarter 4	Quarter 1
NORTH EAST	366	465
Northumberland	236	261	236	189	201	550
Tyne and Wear *	28
Durham
Cleveland *
YORKSHIRE & THE HUMBER	1,202
North Yorkshire	357	479	544	533	457	448
West Yorkshire	44	44	51
South Yorkshire	609	171	137	174
Humberside *	192
NORTH WEST	476	497	480	485	478	..
Cumbria	125	127	122	122	121	147
Lancashire	69	47	46	46	45	33
Merseyside *	27	26	25	24	21	..
Greater Manchester	63	71	68	71	70	40
Cheshire	192	226	219	222	221	247
WEST MIDLANDS	1,316	1,472	1,436	1,455	1,333	1,441
Shropshire	111	152	148	150	137	175
Staffordshire	917	914	897	913	833	906
West Midlands	56
Warwickshire	107	172	169	170	158	..
Hereford & Worcester	125	156
EAST MIDLANDS	1,244	1,370	1,511	1,484	1,308	1,301
Derbyshire	..	204	225	221	199	240
Nottinghamshire	387	365	401	394	346	328
Leicestershire	..	228	254	251	214	238
Northamptonshire	50	69	76	75	67	47
Lincolnshire	438	504	555	543	482	448
EAST OF ENGLAND
Cambridgeshire	488	528	559	553	520	382
Norfolk	337	336	349	346	323	318
Suffolk *
Essex *
Bedfordshire	271
Hertfordshire
SOUTH EAST	3,018	3,574	3,762	3,753	3,496	3,549
Buckinghamshire	116	93	109	113	112	94
Oxfordshire	89	73	74	83	..	93
Berkshire	203	206	217	219	218	209
Greater London *	..	947	1,051	1,081	1,004	1,105
Surrey	227	221	251	255	252	234
Kent *	714	976	978	981	916	940
Sussex East *
Sussex West *	144	213
Hampshire *	560	676	679	626	609	574
Isle of Wight

Note : Regions refer to Government Office Regions

* Includes marine-dredged.

MINING AND QUARRYING

Thousand tonnes

	2010	2011	2012			
	Quarter 4	Quarter 1	Quarter 2	Quarter 3	Quarter 4	Quarter 1
SOUTH WEST	1,344	1,495	1,503	1,509	1,288	1,274
Gloucestershire	279	176	..	185
Wiltshire	200	161	163	165	142	170
Avon *
Somerset *
Dorset *
Devon *	157
Cornwall	..	428	423	436	367	..
ENGLAND	11,072	12,156	12,627	12,556	11,436	11,949
WALES	372	345	460	460	406	360
Clwyd	146	102	154	152	162	145
Gwynedd *	42	..	33
Powys	0	0	0	0	0	1
Dyfed *
Glamorgan West *
Glamorgan Mid	..	2	3	3	3	0
Glamorgan South *
Gwent *
SCOTLAND	1,323	1,649	1,744	1,668	1,556	1,585
South of Scotland	92	94	103	96	88	96
North East Scotland	175	285	303	302	278	192
Highlands	108	146	159	159	146	140
Island Areas	11	16	16	16	15	10
East Central Scotland	86	100	105	101	93	293
West Central Scotland	492	613	640	595	561	508
Tayside and Fife	359	395	418	399	375	346
GREAT BRITAIN	12,767	14,150	14,831	14,684	13,398	13,894

Note : Regions refer to Government Office Regions

* Includes marine-dredged.

MINING AND QUARRYING

Table 7 : Slate - Production, Deliveries and Stocks

Great Britain

Tonnes

	Production			Deliveries			Stocks (a)			Deliveries
	Roofing (b)	Other (c)	Powder & Granules	Roofing (b)	Other (c)	Powder & Granules	Roofing (b)	Other (c)	Powder & Granules	Fill & Other Uses
2000	28,815	12,399	44,644	33,341	11,670	44,923	5,519	7,356	2,856	328,547
2001	30,770	14,834	47,521	33,052	13,586	47,588	3,159	8,465	2,799	383,353
2002	32,182	18,348	44,424	32,653	19,069	43,947	2,674	7,850	3,275	498,212
2003	34,471	15,623	29,003	34,700	14,576	29,240	2,477	8,849	3,416	669,818
2004
2005	2,824	10,281	5,347	..
2006	..	61,612	22,967	..	64,037	22,719	..	6,454	4,274	860,395
2007	..	65,260	19,141	..	62,646	19,431	2,563	2,521	3,746	..
2008	..	59,644	16,915	..	58,129	18,402	..	2,749	2,253	..
2009	..	33,759	9,150	22,555	34,322	10,637	2,420	2,186	766	615,346
2010	..	28,001	27,355	3,063	..	582,111
2011	..	30,665	30,437	3,245	..	662,003
2004 Q2	9,031	3,596	8,083	10,135	3,499	7,328	2,365	8,874	3,997	154,407
Q3	..	8,029	7,544	..	8,578	7,049	3,954	8,225	4,592	158,333
Q4
2005 Q1
Q2
Q3
Q4	..	13,635	7,448	..	6,194	7,635	2,824	10,281	5,347	124,188
2006 Q1	..	11,594	6,575	..	12,879	6,406	3,170	8,967	5,440	195,762
Q2	..	14,804	5,051	..	14,983	5,257	3,079	7,424	3,990	223,696
Q3	..	16,170	5,194	..	16,803	5,094	..	6,792	4,090	251,314
Q4	..	19,044	6,147	..	19,372	5,962	..	6,454	4,274	189,623
2007 Q1	..	17,787	5,571	..	16,829	5,036	6,984	4,996	4,571	376,876
Q2	..	16,577	4,315	..	14,765	4,875	3,066	5,850	4,011	346,426
Q3	..	16,017	4,672	..	15,475	4,929	2,977	6,391	3,754	..
Q4	..	14,879	4,583	..	15,577	4,591	2,563	2,521	3,746	255,249
2008 Q1	..	18,608	4,282	..	18,071	4,414	..	3,059	3,594	246,495
Q2	..	15,465	4,738	..	14,457	4,862	..	3,801	3,484	..
Q3	..	13,811	3,843	..	13,841	5,511	3,851	2,749	1,816	..
Q4	..	11,760	4,052	..	11,760	3,615	..	2,749	2,253	..
2009 Q1	..	7,370	2,128	5,315	7,688	2,724	..	2,431	1,658	148,722
Q2	5,084	9,124	2,046	5,328	9,319	3,385	4,142	2,236	318	169,661
Q3	5,503	8,263	2,046	6,534	8,267	2,163	3,111	2,232	201	154,862
Q4	4,687	9,002	2,930	5,378	9,048	2,365	2,420	2,186	766	142,101
2010 Q1	..	6,772	6,662	2,296	..	88,805
Q2	..	7,517	7,388	..	2,049	3,284	683	175,098
Q3	..	7,335	7,184	..	1,326	3,332	281	159,574
Q4	4,907	6,377	..	4,909	6,121	3,063	..	158,634
2011 Q1	4,736	6,516	3,314	4,449	6,504	3,399	..	3,029	..	198,547
Q2	4,677	8,167	3,370	4,630	8,187	3,094	2,012	3,009	472	216,524
Q3	..	9,851	9,732	3,128	..	139,359
Q4	..	6,131	6,014	3,245	..	107,573
2012 Q1	..	9,247	8,829	2,646	..	131,311
Q2	..	8,209	9,674	1,151	..	139,156

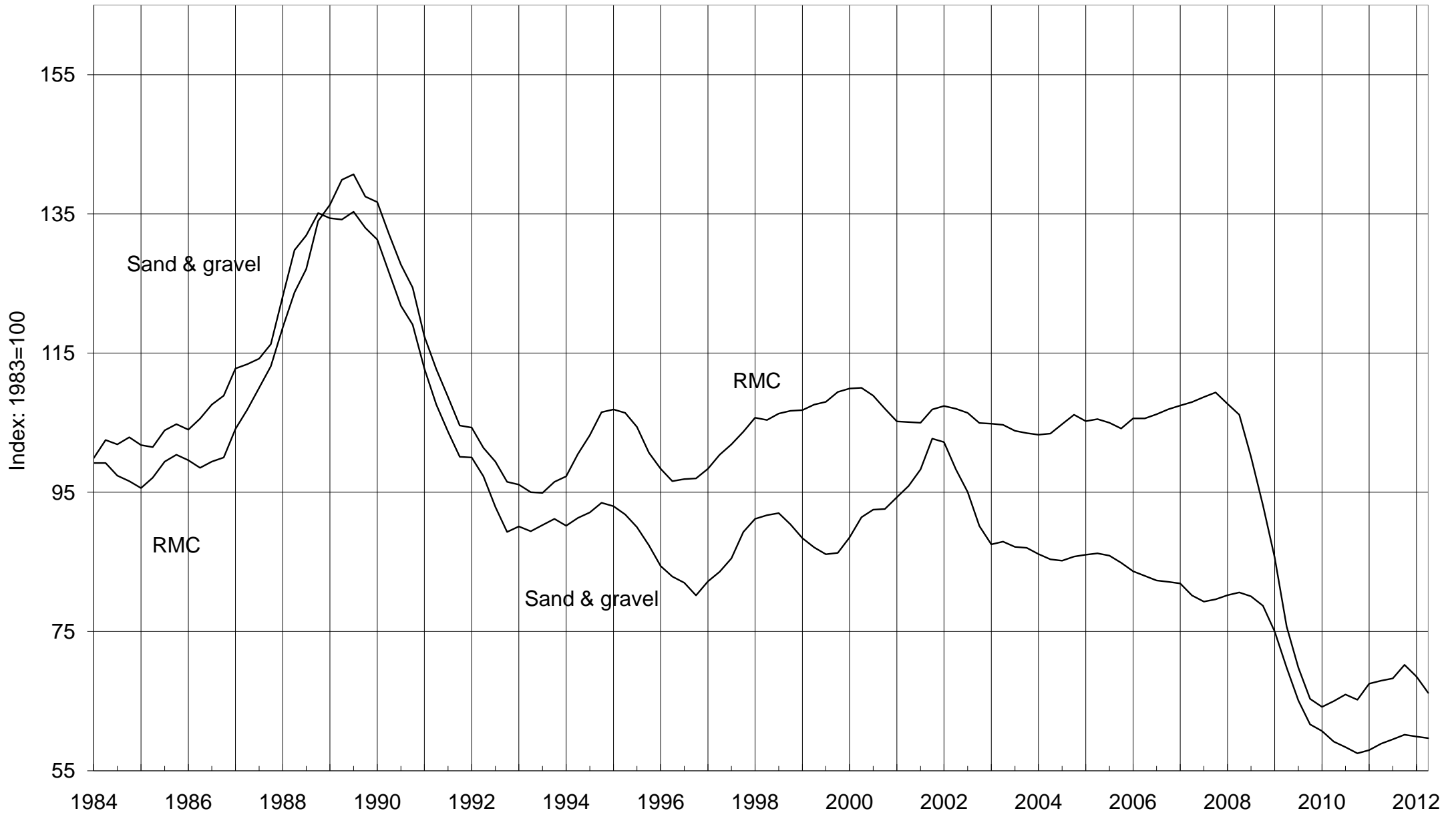
Note : 1) We have improved our sampling panel to include some new sites and have removed some non-pure slate sites. In line with the Code of Practice we have revised the data for Q2, Q3 and Q4 2010.

2) From Q1 1995, the coverage of 'powder & granules' has been extended to include non-quarry manufacture; and 'crude blocks' are included in 'other' manufacture slate.

- (a) Refers to stocks at the end of the period.
- (b) Consists of all slate tiles which could be used as roofing tiles.
- (c) Consists of all slate products for cladding and decorative uses

Deliveries of Sand & Gravel and RMC

4-quarter moving average



The data is taken from Tables 4 & 13

Table 8 : Cement & Clinker - Production, Deliveries and Stocks

Great Britain

Thousand tonnes

		Cement						Clinker	
		Production		Deliveries	Imports (into GB)		Cementitious Material		Production
		of which	Exports	(into GB from	by	by	other	total	
		(from GB)	(from GB)	GB production)	'Manuf.	Others**			
2006		11,469	127	11,221	124	1,089	2,648	15,082	10,069
2007		11,887	74	11,638	255	1,121	2,769	15,783	10,227
2008		10,071	61	9,937	283	1,084	2,432	13,660	8,700
2009		7,623	21	7,474	99	1,085	1,680	10,338	6,421
2010		7,883	0	7,767	61	1,153	1,535	10,515	6,598
2011		8,529	0	8,318	86	1,173	1,736	11,312	7,096
2006	Q3	2,990	37	2,917	40	303	732	3,992	2,654
	Q4	2,851	35	2,672	24	249	623	3,568	2,666
2007	Q1	2,678	27	2,779	43	271	643	3,735	2,021
	Q2	3,188	22	3,061	59	297	701	4,117	2,812
	Q3	3,130	9	3,011	84	294	746	4,135	2,751
	Q4	2,891	16	2,787	69	259	681	3,796	2,643
2008	Q1	2,609	18	2,551	88	268	598	3,505	2,267
	Q2	2,803	18	2,816	94	327	682	3,917	2,366
	Q3	2,520	13	2,496	72	263	648	3,445	2,202
	Q4	2,139	12	2,074	29	226	505	2,793	1,865
2009	Q1	1,762	14	1,782	37	256	410	2,485	1,378
	Q2	2,004	1	1,970	21	279	451	2,721	1,587
	Q3	1,998	5	1,999	25	283	453	2,760	1,831
	Q4	1,859	1	1,723	17	268	366	2,373	1,624
2010	Q1	1,726	0	1,744	24	246	336	2,350	1,261
	Q2	2,157	0	2,154	8	345	416	2,923	1,745
	Q3	2,203	0	2,195	17	310	450	2,971	1,880
	Q4	1,796	0	1,674	12	252	332	2,270	1,713
2011	Q1	1,979	0	2,043	12	281	402	2,738	1,427
	Q2	2,245	0	2,165	25	319	448	2,956	1,791
	Q3	2,246	0	2,200	25	303	494	3,022	2,015
	Q4	2,059	0	1,909	24	270	392	2,595	1,863
2012	Q1	1,880	0	1,928	16	288	370	2,602	1,366
	Q2	2,050	0	1,965	13	1,764
2011	Jun	783	0	769	8	598
	Jul	789	0	727	8	658
	Aug	725	0	719	8	680
	Sep	732	0	754	8	676
	Oct	765	0	709	8	621
	Nov	720	0	722	8	615
	Dec	574	0	478	8	627
2012	Jan	513	0	558	4	320
	Feb	602	0	612	4	384
	Mar	765	0	757	8	661
	Apr	678	0	610	4	579
	May	726	0	735	4	568
	Jun	645	0	619	4	617

NB Where the coverage is for Great Britain, the figures for imports & exports are defined accordingly and have been estimated.

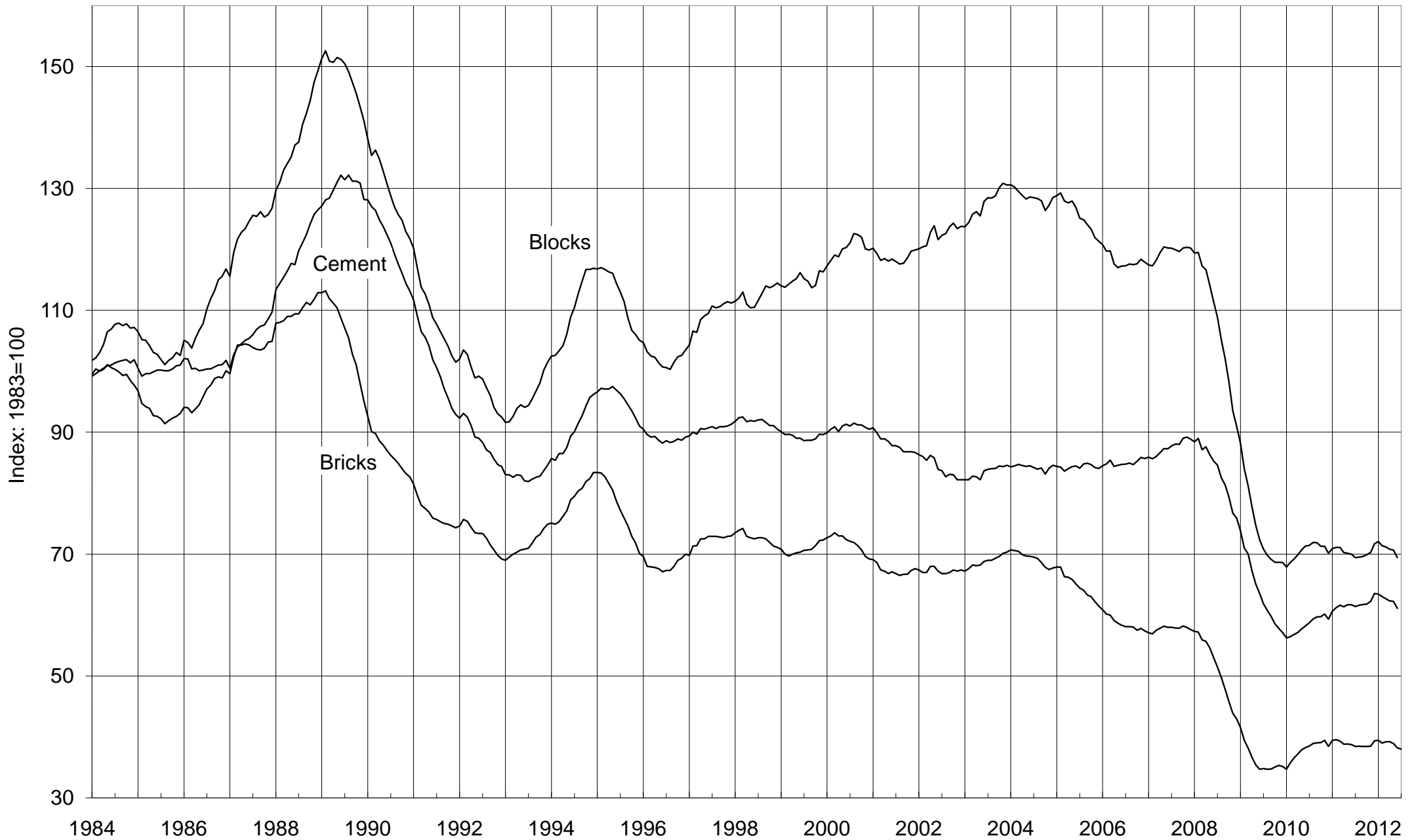
Cementitious material covers cement itself, fly ash to EN 450 Part 1 where used as part of the cement in concrete (previously known as pulverised fuel ash (pfa) to BS 3892 Part 1) and ground granulated blast furnace slag (ggbs) to EN 15167 Part 1 (previously BS 6699)

* Refers to stocks at end of period

** Estimated

Deliveries of Bricks, Blocks & Cement

12-month moving totals



The data is taken from tables 8, 9 and 11

BRICKS

Table 9 : Bricks - Production, Deliveries and Stocks

Great Britain

		Production	Deliveries (from)	Stocks*	Production	Deliveries (from)	Stocks*
(a) Brick Type		<u>All Types</u>			<u>Commons</u>		
2007		2,471	2,409	965	305	291	150
2008		1,929	1,796	1,105	246	242	151
2009		1,257	1,469	887	185	224	108
2010		1,430	1,606	702	182	194	94
2011		1,554	1,646	610	172	185	82
2011	Q2	429	439	665	46	50	91
	Q3	394	444	615	43	50	84
	Q4	360	365	610	38	41	82
2012	Q1	370	391	588	32	45	68
	Q2	408	397	599	35	41	62
2011	July	122	148	640	15	18	88
	August	129	146	624	15	15	88
	September	142	150	615	13	17	84
	October	144	142	617	15	16	83
	November	140	136	621	14	15	83
	December	76	86	610	8	9	82
2012	January	106	110	606	11	12	80
	February	127	111	622	11	11	80
	March	136	170	588	10	22	68
	April	129	131	586	12	14	66
	May	144	142	589	12	15	63
	June	134	124	599	11	12	62
	July (P)	126	139	586	11	15	58
(b) Material Type		<u>All Materials</u>			<u>Clay#</u>		
2007		2,471	2,409	965	2,312	2,249	947
2008		1,929	1,796	1,105	1,814	1,676	1,093
2009		1,257	1,469	887
2010		1,430	1,606	702
2011		1,554	1,646	610
2011	Q2	429	439	665
	Q3	394	444	615
	Q4	360	365	610
2012	Q1	370	391	588
	Q2	408	397	599
2011	July	122	148	640
	August	129	146	624
	September	142	150	615
	October	144	142	617
	November	140	136	621
	December	76	86	610
2012	January	106	110	606
	February	127	111	622
	March	136	170	588
	April	129	131	586
	May	144	142	589
	June	134	124	599
	July (P)	126	139	586

* Refers to stocks at end of period

#Sand-lime bricks are included with clay bricks

Millions

Production	Deliveries (from)	Stocks*	Production	Deliveries (from)	Stocks*	
						(a) Brick Type
Facings			Engineering			
1,950	1,906	753	216	212	62	2007
1,514	1,386	895	170	168	58	2008
973	1,135	732	99	109	48	2009
1,124	1,280	570	124	132	39	2010
1,230	1,304	494	152	157	34	2011
340	346	538	43	43	36	2011 Q2
312	352	498	39	42	33	Q3
288	291	494	34	33	34	Q4
298	310	483	40	36	38	2012 Q1
334	320	497	39	37	40	Q2
96	115	520	11	15	33	2011 July
102	118	504	13	13	32	August
114	119	498	14	14	33	September
116	113	501	13	13	33	October
110	109	502	15	12	36	November
62	69	494	6	8	34	December
82	89	488	13	9	38	2012 January
103	88	503	13	12	39	February
113	133	483	14	15	38	March
108	105	486	10	12	35	April
119	114	490	14	13	37	May
107	100	497	15	12	40	June
101	111	487	13	13	40	July (P)
						(b) Material Type
Sand-Lime#			Concrete			
..	159	160	18	2007
..	115	120	11	2008
..	2009
..	2010
..	2011
..	2011 Q2
..	Q3
..	Q4
..	2012 Q1
..	Q2
..	2011 July
..	August
..	September
..	October
..	November
..	December
..	2012 January
..	February
..	March
..	April
..	May
..	June
..	July (P)

Note: Data covering January 2009 to February 2011 were revised in the December 2011 edition of this bulletin. These data are included in this table. For more information on revisions, see the *Pre-announcements and Summary of Revisions to 'Monthly Statistics of Building Materials and Components' Publication* document on our website.

BRICKS

Table 10 : Brick Production, Deliveries and Stocks by English region, Wales and Scotland

	North East	Yorks & Humber	North West	West Midlands	East Midlands	East of England
				#		#
(a) Commons						
Production						
2011	45,755	..
Q3	..	788	10,091	..
Q4	1,463	..	9,807	..
2012 Q1	1,688	2,655	11,228	..
Q2	2,592	9,452	..
2012 June	814	3,026	..
Deliveries (from)						
2011	..	3,751	8,748	..	45,046	..
Q3	..	1,106	2,776	3,063	12,589	..
Q4	..	769	1,469	3,324	10,254	..
2012 Q1	1,660	3,274	10,680	..
Q2	1,466	2,954	10,501	..
2012 June	..	203	513	1,041	3,076	..
Stocks *						
2011	3,157	1,617	3,734	5,180	14,090	..
Q3	3,064	1,936	3,740	5,394	14,320	..
Q4	3,157	1,617	3,734	5,180	14,090	..
2012 Q1	..	1,181	3,762	4,561	14,630	..
Q2	3,818	1,227	4,074	4,199	13,546	..
2012 June	3,818	1,227	4,074	4,199	13,546	..
(b) Facings						
Production						
2011	..	69,886	..	293,282	322,710	..
Q3	..	18,150	18,077	77,463	78,715	..
Q4	..	17,037	..	72,134	68,760	..
2012 Q1	..	17,283	..	84,550	78,853	..
Q2	..	16,062	18,875	96,418	89,136	..
2012 June	..	4,271	6,359	30,636	28,829	..
Deliveries (from)						
2011	..	73,581	81,200	300,877	345,549	..
Q3	..	20,038	20,996	81,401	95,772	..
Q4	..	13,796	16,335	65,219	83,359	..
2012 Q1	..	17,083	17,294	70,577	86,241	..
Q2	..	18,966	16,565	75,506	92,062	..
2012 June	..	6,232	5,545	23,007	30,241	..
Stocks *						
2011	..	20,542	37,334	96,678
Q3	..	17,337	35,012	90,565
Q4	..	20,542	37,334	96,678
2012 Q1	..	20,704	37,854	110,651
Q2	..	17,800	40,164	131,563
2012 June	..	17,800	40,164	131,563
(c) Engineering #						
Production						
2011	95,916
Q3	23,378
Q4	22,313
2012 Q1	23,278
Q2	22,511
2012 June	8,827	0	..
Deliveries (from)						
2011	21,118	95,673
Q3	6,013	25,510
Q4	3,341	19,548
2012 Q1	19,516
Q2	19,033
2012 June	5,981
Stocks *						
2011	3,957	10,453
Q3	4,954	7,718
Q4	3,957	10,453
2012 Q1	3,711	14,215
Q2	4,261	17,693
2012 June	4,261	17,693

Note : Regions now use Government Office boundaries

* Refers to stocks at end of period.

South East	South West	England	Wales	Scotland	Great Britain	
#	#					
..	172,431	(a) Commons
..	42,985	Production
..	37,996	2011
..	31,615	Q3
..	34,660	Q4
..	11,436	2012 Q1
..	Q2
..	2012 June
..	184,807	Deliveries (from)
..	49,801	2011
..	40,734	Q3
..	45,219	Q4
..	40,587	2012 Q1
..	11,957	Q2
..	2012 June
..	1,345	81,597	Stocks *
..	1,706	84,082	2011
..	1,345	81,597	Q3
..	1,781	67,985	Q4
..	1,738	62,023	2012 Q1
..	1,738	62,023	Q2
..	62,023	2012 June
..	1,229,534	(b) Facings
51,250	4,452	312,120	Production
50,318	287,766	2011
52,004	298,422	Q3
55,955	333,777	Q4
17,658	107,348	2012 Q1
..	Q2
..	2012 June
239,115	1,304,050	Deliveries (from)
65,099	4,300	352,226	2011
55,660	290,804	Q3
52,890	309,869	Q4
55,365	319,528	2012 Q1
16,745	100,152	Q2
..	2012 June
53,299	494,279	Stocks *
58,641	7,468	498,143	2011
53,299	494,279	Q3
52,413	482,774	Q4
..	497,023	2012 Q1
..	497,023	Q2
..	497,023	2012 June
..	152,305	(c) Engineering #
..	38,592	Production
..	34,307	2011
..	39,845	Q3
..	39,309	Q4
..	15,234	2012 Q1
..	Q2
..	2012 June
..	156,873	Deliveries (from)
..	42,176	2011
..	33,087	Q3
..	36,184	Q4
..	36,772	2012 Q1
..	11,594	Q2
..	2012 June
..	34,063	Stocks *
..	32,873	2011
..	34,063	Q3
..	37,724	Q4
..	40,261	2012 Q1
..	40,261	Q2
..	40,261	2012 June

Note: Data covering January 2009 to February 2011 were revised in the December 2011 edition of this bulletin. These data are included in this table. For more information on revisions, see the *Summary of Revisions to Monthly Statistics of Building Materials and Components' Publication* document on our website.

BRICKS

Table 10 (cont'd) : Brick Production, Deliveries and Stocks by English region, Wales and Scotland

	North East	Yorks & Humber	North West	West Midlands	East Midlands	East of England
(d) All Bricks						
Production						
2010
2011
2011 Q2	110,768
Q3
Q4
2012 Q1	109,511
Q2	119,896
2011 June	35,106	33,657	..
July	29,968
August	31,179	..
September	39,033
October	40,559
November	31,026	..
December	20,101	..
2012 January	29,794	23,768	..
February	37,656
March	42,061	34,777	..
April	38,601	32,273	..
May	41,689
June	39,606	31,855	..
Deliveries (from)						
2010
2011	111,066
2011 Q2	31,105	109,390
Q3	29,785	108,643
Q4	21,145	87,173
2012 Q1	92,325
Q2	96,286
2011 June	11,191	36,550
July	10,523	35,555
August	9,167	36,478
September	10,095	36,610
October	7,922	34,495
November	8,214	31,853
December	5,009	20,825
2012 January	6,588	26,769
February	7,370	26,839
March	38,717
April	31,272
May	35,360
June	29,654
Stocks *						
2010	53,085	124,662
2011	45,025	111,327
2011 Q2	47,368	109,480
Q3	43,706	102,855
Q4	45,025	111,327
2012 Q1	45,327	128,513
Q2	48,499	152,123
2011 June	47,368	109,480
July	45,161	103,893
August	44,414	100,432
September	43,706	102,855
October	45,581	108,889
November	47,037	113,999
December	45,025	111,327
2012 January	43,883	114,352
February	46,123	125,169
March	45,327	128,513
April	45,206	135,842
May	46,699	142,171
June	48,499	152,123

Note : Regions now use Government Office boundaries

* Refers to stocks at end of period.

BRICKS

Thousands

South East	South West	England	Wales	Scotland	Great Britain	
						(d) All Bricks
						Production
..	1,429,605	2010
..	1,554,270	2011
..	428,794	2011 Q2
..	393,697	Q3
..	360,069	Q4
..	369,882	2012 Q1
..	407,746	Q2
..	143,921	2011 June
..	122,429	July
..	129,415	August
..	141,853	September
..	144,166	October
..	139,534	November
..	76,369	December
..	106,407	2012 January
..	127,161	February
..	136,314	March
..	129,256	April
..	144,472	May
..	134,018	June
						Deliveries (from)
..	1,605,991	2010
..	1,645,730	2011
..	439,464	2011 Q2
..	444,203	Q3
..	364,625	Q4
..	391,272	2012 Q1
..	396,887	Q2
..	153,336	2011 June
..	147,916	July
..	145,930	August
..	150,357	September
..	141,993	October
..	136,372	November
..	86,260	December
..	110,447	2012 January
..	110,539	February
..	170,286	March
..	131,332	April
..	141,852	May
..	123,703	June
						Stocks *
..	702,073	2010
..	609,939	2011
..	665,335	2011 Q2
..	615,098	Q3
..	609,939	Q4
..	588,483	2012 Q1
..	599,307	Q2
..	665,335	2011 June
..	640,178	July
..	623,602	August
..	615,098	September
..	617,241	October
..	620,620	November
..	609,939	December
..	605,861	2012 January
..	622,463	February
..	588,483	March
..	586,397	April
..	589,008	May
..	599,307	June

Note: Data covering January 2009 to February 2011 were revised in the December 2011 edition of this bulletin. These data are included in this table. For more information on revisions, see the *Summary of Revisions to 'Monthly Statistics of Building Materials and Components' Publication document* on our website.

CONCRETE PRODUCTS

Table 11 : Concrete Blocks - Production, Deliveries and Stocks - SUSPENDED¹

Great Britain

	All Types			Dense		
	Production	Deliveries (from)	Stocks*	Production	Deliveries (from)	Stocks*
2001	87,922	88,509	8,842	36,598	36,518	4,258
2002	91,474	91,342	9,014	35,744	36,019	3,963
2003	95,675	96,383	8,513	36,775	37,175	3,684
2004	96,256	94,854	10,088	37,677	37,444	3,690
2005	89,997	89,551	9,680	36,188	36,473	3,465
2006	87,510	87,015	..	34,956	34,741	..
2007	89,951	88,746	..	36,686	35,396	..
2008	67,743	67,136	8,920	29,675	29,889	3,498
2009	50,394	50,639	8,320	22,607	22,748	3,291
2010	53,629	51,758	10,152	22,393	21,731	3,833
2011	54,648	52,896	11,561	23,006	22,096	4,793
2007 Q1	22,014	21,057	..	8,714	8,141	..
Q2	22,532	24,033	..	9,268	9,531	..
Q3	23,248	23,184	..	9,727	9,283	..
Q4	22,157	20,472	..	8,978	8,442	..
2008 Q1	21,131	18,855	11,749	8,564	7,853	5,075
Q2	20,231	19,714	11,977	8,767	8,677	5,107
Q3	14,894	16,309	10,224	7,131	7,576	4,479
Q4	11,487	12,259	8,920	5,214	5,783	3,498
2009 Q1	12,094	11,649	9,161	5,635	5,438	3,628
Q2	13,463	13,191	9,455	6,192	6,032	3,821
Q3	12,771	13,924	8,203	5,811	6,255	3,390
Q4	12,066	11,874	8,320	4,969	5,023	3,291
2010 Q1	12,614	12,072	8,740	5,033	4,896	3,333
Q2	14,956	14,753	8,990	6,343	6,176	3,513
Q3	15,172	14,343	9,832	6,477	6,125	3,837
Q4	10,887	10,590	10,152	4,541	4,534	3,833
2011 Q1	13,982	12,795	11,516	5,642	5,278	4,197
Q2	14,761	13,911	12,510	6,217	5,871	4,647
Q3	14,208	14,076	12,352	6,217	5,931	4,862
Q4	11,698	12,115	11,561	4,930	5,016	4,793
2012 Q1	13,561	12,431	12,694	5,522	5,211	5,125
2010 June	5,353	5,040	8,990	2,394	2,237	3,513
July	5,266	4,970	..	2,248	2,169	..
August	4,711	4,614	..	2,158	1,962	..
September	5,195	4,759	9,832	2,070	1,993	3,837
October	4,295	4,372	..	1,739	1,824	..
November	3,999	4,092	..	1,595	1,710	..
December	2,593	2,126	10,152	1,207	1,001	3,833
2011 January	3,924	3,591	..	1,657	1,539	..
February	4,664	4,220	..	1,853	1,694	..
March	5,394	4,984	11,516	2,133	2,045	4,197
April	4,415	4,308	..	1,867	1,811	..
May	5,037	4,690	..	2,119	2,019	..
June	5,309	4,912	12,510	2,231	2,041	4,647
July	4,805	4,574	..	2,088	1,935	..
August	4,413	4,675	..	2,073	1,987	..
September	4,990	4,826	12,352	2,056	2,009	4,862
October	4,497	4,584	..	1,844	1,906	..
November	4,227	4,376	..	1,759	1,797	..
December	2,974	3,155	11,561	1,327	1,314	4,793
2012 January	4,354	3,887	..	1,823	1,653	..
February	4,395	3,693	..	1,864	1,626	..
March	4,812	4,850	12,694	1,835	1,932	5,125
April (P)	3,973	4,022	..	1,585	1,630	..
May (P)	4,923	4,599	..	1,953	1,960	..
June (P)	4,114	3,987	..	1,621	1,545	..
July						

Updates to table 11 have been temporarily suspended¹

* Refers to stocks at end of period

Missing returns for provisional data (P) have been estimated using an improved methodology. See the 'pre-announcement of any major changes to samples or methodology' at: <http://www.bis.gov.uk/analysis/statistics/construction-statistics/building-materials>

CONCRETE PRODUCTS

Thousand square metres

Lightweight			Aerated			
Production	Deliveries (from)	Stocks*	Production	Deliveries (from)	Stocks*	
22,684	22,670	2,207	28,639	29,320	2,377	2001
23,478	23,537	2,188	32,252	31,786	2,863	2002
24,991	25,161	2,107	33,909	34,047	2,721	2003
25,462	25,736	2,271	33,117	31,674	4,127	2004
25,561	25,673	2,173	28,248	27,405	4,042	2005
25,345	25,222	..	27,209	27,051	..	2006
25,965	25,667	..	27,300	27,682	..	2007
18,168	18,363	2,149	19,900	18,884	3,273	2008
13,421	13,989	1,522	14,367	13,903	3,507	2009
14,415	13,923	2,044	16,822	16,104	4,276	2010
15,153	14,822	2,172	16,490	15,978	4,596	2011
6,418	6,437	..	6,883	6,479	..	2007 Q1
6,572	6,867	..	6,692	7,636	..	Q2
6,757	6,616	..	6,764	7,286	..	Q3
6,217	5,748	..	6,962	6,282	..	Q4
5,580	5,389	2,633	6,988	5,612	4,041	2008 Q1
5,421	5,405	2,549	6,043	5,632	4,321	Q2
4,110	4,309	2,338	3,653	4,424	3,406	Q3
3,057	3,260	2,149	3,216	3,216	3,273	Q4
3,213	3,258	2,181	3,247	2,953	3,352	2009 Q1
3,498	3,553	2,125	3,773	3,607	3,510	Q2
3,293	3,765	1,544	3,667	3,903	3,269	Q3
3,416	3,412	1,522	3,681	3,439	3,507	Q4
3,344	3,252	1,601	4,238	3,924	3,806	2010 Q1
4,031	3,950	1,692	4,582	4,627	3,785	Q2
4,208	3,899	2,023	4,487	4,319	3,971	Q3
2,832	2,822	2,044	3,515	3,234	4,276	Q4
3,916	3,665	2,301	4,423	3,852	5,017	2011 Q1
4,008	3,827	2,507	4,537	4,212	5,357	Q2
3,908	3,970	2,218	4,083	4,175	5,272	Q3
3,321	3,360	2,172	3,447	3,739	4,596	Q4
3,649	3,317	2,495	4,389	3,903	5,074	2012 Q1
1,428	1,398	1,692	1,530	1,405	3,785	2010 June
1,474	1,354	..	1,543	1,447	..	July
1,286	1,289	..	1,267	1,363	..	August
1,447	1,256	2,023	1,677	1,510	3,971	September
1,211	1,201	..	1,345	1,347	..	October
1,068	1,122	..	1,336	1,260	..	November
553	498	2,044	834	627	4,276	December
939	1,021	..	1,328	1,031	..	2011 January
1,346	1,196	..	1,466	1,330	..	February
1,632	1,448	2,301	1,629	1,491	5,017	March
1,188	1,201	..	1,361	1,296	..	April
1,401	1,316	..	1,517	1,355	..	May
1,420	1,311	2,507	1,658	1,561	5,357	June
1,335	1,291	..	1,383	1,348	..	July
1,306	1,327	..	1,034	1,361	..	August
1,267	1,352	2,218	1,666	1,466	5,272	September
1,166	1,265	..	1,487	1,414	..	October
1,386	1,271	..	1,082	1,308	..	November
769	824	2,172	878	1,017	4,596	December
1,174	993	..	1,357	1,241	..	2012 January
1,147	1,000	..	1,384	1,068	..	February
1,328	1,324	2,495	1,648	1,594	5,074	March
1,110	1,115	..	1,278	1,277	..	April (P)
1,430	1,277	..	1,540	1,361	..	May (P)
1,086	1,118	..	1,407	1,324	..	June (P)
						July

Updates to table 11 have been temporarily suspended¹

1. Updates to table 11 have been temporarily suspended whilst BIS and the ONS investigate data quality issues.

CONCRETE PRODUCTS

Table 12 : Concrete Blocks : Production, Deliveries and Stocks by English Region, Wales and Scotland - SUSPENDED¹

	North East	Yorks & Humber	North West	West Midlands	East Midlands	East of England
(a) Dense aggregate						
Production						
2011	2,604
2011 Q1	111	..	701
Q2	115	..	699
Q3	723
Q4	74	..	482
2012 Q1	64	..	548
Deliveries (from)						
2011	408	..	2,597
2011 Q1	105	..	665
Q2	117	..	707
Q3	109	..	706
Q4	78	..	519
2012 Q1	71	..	507
Stocks *						
2011	74	294	249
2011 Q1	91	382	301
Q2	89	378	270
Q3	78	346	286
Q4	74	294	249
2012 Q1	65	308	290	..	814	..
Q2	Updates to table 12 have been temporarily suspended ¹					
(b) Other (1)						
Production						
2011	2,125
2011 Q1	353	..	533
Q2	319	..	562
Q3	531
Q4	273	..	499
2012 Q1	257	..	440
Deliveries (from)						
2011	1,172	..	2,108
2011 Q1	327	..	532
Q2	302	..	554
Q3	300	..	566
Q4	243	..	455
2012 Q1	262	..	445
Stocks *						
2011	135	1,474	162
2011 Q1	148	1,264	165
Q2	165	1,388	153
Q3	105	1,441	118
Q4	135	1,474	162
2012 Q1	118	1,385	157	..	341	..
Q2	Updates to table 12 have been temporarily suspended ¹					
(c) Total						
Production						
2011	1,582	10,645	4,729	3,848	6,075	5,607
2011 Q1	463	2,637	1,234	1,024	1,598	1,646
Q2	434	2,841	1,261	982	1,680	1,475
Q3	338	2,755	1,254	975	1,564	1,436
Q4	346	2,412	980	867	1,232	1,050
2012 Q1	322	2,217	988	1,120	1,713	1,584
Deliveries (from)						
2011	1,580	10,426	4,705	3,786	6,133	5,826
2011 Q1	432	2,568	1,197	916	1,489	1,521
Q2	419	2,721	1,261	995	1,661	1,578
Q3	409	2,706	1,272	1,082	1,600	1,473
Q4	321	2,431	974	793	1,383	1,254
2012 Q1	332	2,292	952	791	1,520	1,349
Stocks *						
2011	209	1,769	411	345	961	437
2011 Q1	239	1,646	466	785	1,201	730
Q2	254	1,766	423	772	1,220	643
Q3	183	1,787	405	665	1,112	632
Q4	209	1,769	411	345	961	437
2012 Q1	183	1,693	447	678	1,154	665
Q2	Updates to table 12 have been temporarily suspended ¹					

Note : Regions refer to Government Office Regions

* Refers to stocks at end of period.

CONCRETE PRODUCTS

Thousand square metres

South East	South West	England	Wales	Scotland	Great Britain	
						(a) Dense aggregate
						Production
..	6,106	..	3,377	..	23,006	2011
..	1,574	..	750	..	5,642	2011 Q1
..	1,694	..	896	..	6,217	Q2
..	1,609	..	956	..	6,217	Q3
411	1,228	..	775	..	4,930	Q4
..	1,457	4,171	949	403	5,522	2012 Q1
						Deliveries (from)
..	5,873	..	2,961	..	22,096	2011
..	1,415	..	681	..	5,278	2011 Q1
..	1,599	..	741	..	5,871	Q2
..	1,522	..	848	..	5,931	Q3
414	1,337	..	691	..	5,016	Q4
..	1,487	4,067	762	382	5,211	2012 Q1
						Stocks *
..	1,458	302	4,793	2011
..	1,260	233	4,197	2011 Q1
..	1,482	266	4,647	Q2
137	1,549	336	4,862	Q3
..	1,458	302	4,793	Q4
184	1,484	280	5,125	2012 Q1
						Q2
						Updates to table 12 have been temporarily suspended ¹
						(b) Other (1)
						Production
..	1,387	..	633	..	31,643	2011
..	327	..	161	..	8,339	2011 Q1
..	380	..	251	..	8,544	Q2
..	392	..	128	..	7,991	Q3
1,720	287	..	92	..	6,768	Q4
..	315	7,818	201	20	8,039	2012 Q1
						Deliveries (from)
..	1,340	..	399	..	30,800	2011
..	295	..	89	..	7,517	2011 Q1
..	375	..	78	..	8,040	Q2
..	365	..	124	..	8,145	Q3
1,772	304	..	108	..	7,099	Q4
..	298	7,108	97	14	7,220	2012 Q1
						Stocks *
..	203	29	6,768	2011
..	175	26	7,318	2011 Q1
..	225	31	7,863	Q2
3,642	228	30	7,490	Q3
..	203	29	6,768	Q4
3,659	226	31	7,569	2012 Q1
						Q2
						Updates to table 12 have been temporarily suspended ¹
						(c) Total
						Production
9,196	7,493	49,175	4,010	1,464	54,648	2011
2,219	1,902	12,724	911	347	13,982	2011 Q1
2,474	2,075	13,221	1,147	392	14,761	Q2
2,372	2,001	12,696	1,085	427	14,208	Q3
2,131	1,515	10,533	867	298	11,698	Q4
2,274	1,772	11,989	1,150	422	13,561	2012 Q1
						Deliveries (from)
8,489	7,213	48,158	3,360	1,378	52,896	2011
1,860	1,710	11,693	770	332	12,795	2011 Q1
2,128	1,974	12,738	819	354	13,911	Q2
2,315	1,887	12,745	971	360	14,076	Q3
2,186	1,642	10,983	800	333	12,115	Q4
2,155	1,785	11,176	859	396	12,431	2012 Q1
						Stocks *
3,724	1,661	9,516	1,714	331	11,561	2011
3,594	1,434	10,097	1,160	259	11,516	2011 Q1
3,940	1,707	10,725	1,488	297	12,510	Q2
3,779	1,777	10,339	1,646	367	12,352	Q3
3,724	1,661	9,516	1,714	331	11,561	Q4
3,842	1,711	10,373	2,011	311	12,694	2012 Q1
						Q2
						Updates to table 12 have been temporarily suspended ¹

(1) Lightweight aggregate including aerated concrete blocks where appropriate.

1. Updates to table 12 have been temporarily suspended whilst BIS and the ONS investigate data quality issues.

OTHER BUILDING MATERIALS

Table 13 : Other Building Materials

		Great Britain			United Kingdom
		Concrete Roofing Tiles (Th.sq.m. of roof area covered)			Ready-Mixed Concrete # (Th.cu.m.)
		Production	Deliveries	Stocks *	Deliveries
2001		24,825	24,430	4,947	23,008
2002		25,023	24,390	4,586	22,597
2003		21,437	21,401	2,982	22,289
2004		20,739	19,403	2,850	22,856
2005		25,719	24,489	4,902	22,432
2006		23,730	24,118	4,426	23,029
2007		23,551	23,812	3,646	23,548
2008		20,084	19,926	3,899	20,051
2009		14,079	15,612	2,344	14,069
2010		17,817	17,146	3,023	14,038
2011		17,712	17,684	3,126	15,121
2003	Q2	6,280	6,364	4,480	5,892
	Q3	3,917	4,455	2,362	5,750
	Q4	5,418	4,785	2,982	5,259
2004	Q1	5,498	4,294	3,787	5,334
	Q2	5,266	4,800	3,728	5,931
	Q3	4,920	5,134	3,048	6,038
	Q4	5,055	5,175	2,850	5,553
2005	Q1	5,787	4,779	3,732	5,137
	Q2	7,502	6,406	5,818	5,994
	Q3	6,135	7,103	4,850	5,920
	Q4	6,295	6,200	4,902	5,381
2006	Q1	6,792	6,252	5,418	5,445
	Q2	6,002	5,709	5,708	5,995
	Q3	5,448	6,371	4,688	6,047
	Q4	5,489	5,787	4,426	5,542
2007	Q1	6,618	5,629	5,368	5,554
	Q2	5,775	5,728	5,360	6,103
	Q3	5,129	6,541	3,929	6,205
	Q4	6,028	5,914	3,646	5,686
2008	Q1	5,708	5,421	3,922	5,193
	Q2	5,815	5,679	4,488	5,773
	Q3	4,657	4,977	3,840	4,902
	Q4	3,903	3,849	3,899	4,183
2009	Q1	3,664	3,281	4,273	3,583
	Q2	3,055	3,936	3,391	3,637
	Q3	3,580	4,447	2,522	3,628
	Q4	3,779	3,949	2,344	3,221
2010	Q1	4,129	3,505	2,967	3,328
	Q2	4,961	4,922	3,008	3,819
	Q3	4,783	4,824	2,967	3,831
	Q4	3,945	3,894	3,023	3,060
2011	Q1	4,820	4,079	3,858	3,827
	Q2	4,565	4,398	4,022	3,907
	Q3	4,210	4,901	3,316	3,908
	Q4	4,116	4,306	3,126	3,479
2012	Q1	4,673	3,928	3,872	3,463
	Q2	4,236	4,100	4,008	3,399

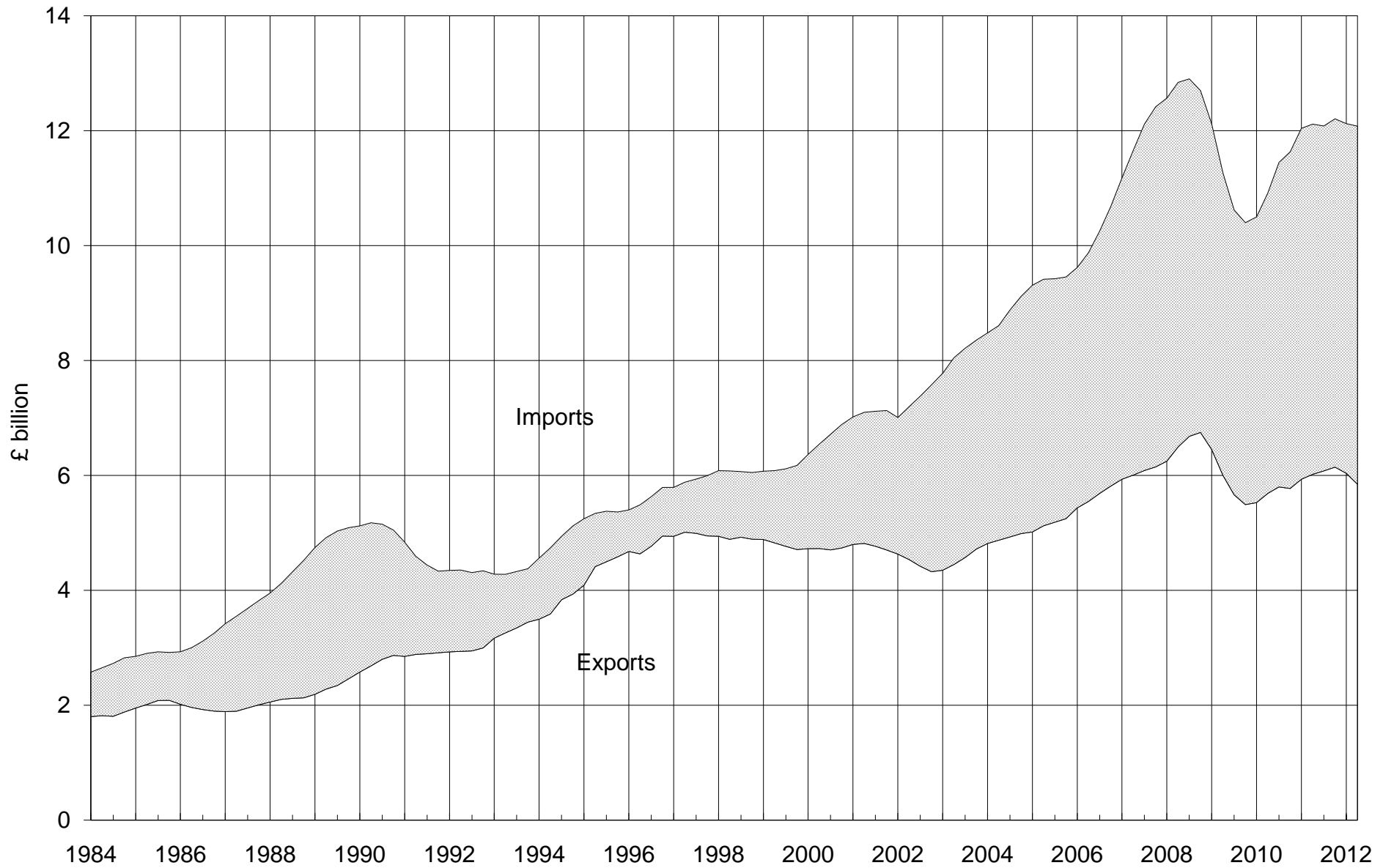
* Refers to stocks at the end of the period.

In April 2012, the Mineral Products Association (who provide these figures), estimated that data understates UK deliveries by around 20-25%. Previously, they had estimated that figures understate UK deliveries by 14-18%.

Concrete roofing tiles data underwent imputation for a non-responder for Qtrs 1 & 2 of 2012.

Comparison of Imports & Exports

4-quarter moving totals



The data is taken from Table 14

EXTERNAL TRADE

Table 14 : Value of Overseas Trade in Selected Materials and Components for Constructional Use : Imports (cif) & Exports (fob)

United Kingdom		Current Prices (£'000)					
		2006	2007	2008	2009	2010	2011
All Building Materials & Components	Imports	10,680,836	12,415,890	12,697,046	10,399,489	11,632,361	12,206,507
	Exports	5,813,301	6,147,721	6,747,415	5,491,055	5,772,232	6,143,891
	Balance	(4,867,535)	(6,268,169)	(5,949,631)	(4,908,434)	(5,860,129)	(6,062,616)
All Raw Materials	Imports	180,137	213,589	228,019	158,706	174,275	200,736
	Exports	98,057	124,957	116,930	135,125	132,349	140,525
	Balance	(82,080)	(88,632)	(111,089)	(23,581)	(41,926)	(60,211)
Sand for construction	Imports	5,075	6,455	6,369	5,916	5,259	7,558
	Exports	5,770	7,769	9,373	7,967	7,398	7,783
Crushed Rock : uncoated	Imports	39,308	38,882	43,442	32,030	36,490	41,280
	Exports	65,985	71,990	77,930	76,898	73,902	78,237
Crushed Rock : coated	Imports	2,245	2,927	3,206	2,227	2,642	3,057
	Exports	2,621	3,937	3,862	3,061	2,988	4,727
Building Stone : unprocessed	Imports	95,903	115,064	124,436	93,174	99,236	107,354
	Exports	1,777	3,209	2,159	2,114	4,053	3,716
Slate : unprocessed	Imports	10,894	11,590	9,295	6,168	5,799	4,686
	Exports	309	1,579	813	1,924	844	922
Gypsum & Anhydrite	Imports	8,649	8,626	8,301	8,353	7,040	7,284
	Exports	511	493	899	768	1,148	1,035
Bituminous Shale	Imports	18,063	30,045	32,970	10,838	17,809	29,517
	Exports	21,084	35,980	21,894	42,393	42,016	44,105
All Semi-Manufactures	Imports	1,756,076	2,196,078	1,972,139	1,389,572	1,639,598	1,698,664
	Exports	618,573	644,415	648,822	426,190	480,686	486,111
	Balance	(1,137,503)	(1,551,663)	(1,323,317)	(963,382)	(1,158,912)	(1,212,553)
Clinker	Imports	40,922	60,554	35,973	18,520	17,331	19,940
	Exports	2,644	1,899	1,271	835	1,205	2,763
Sawn Wood > 6mm thick	Imports	727,916	915,900	610,292	554,187	705,638	622,813
	Exports	38,370	32,010	20,957	16,025	19,437	14,671
Densified Wood	Imports	2,782	2,332	1,767	1,452	2,301	1,942
	Exports	422	319	272	268	518	569
Particle Board	Imports	56,174	55,934	45,497	27,913	30,755	34,479
	Exports	16,357	9,377	8,920	8,382	8,875	8,044
Laminated Wood	Imports	250,615	282,912	296,969	215,021	146,691	133,222
	Exports	24,436	23,172	21,935	15,839	11,698	11,051
Fibreboard	Imports	61,429	72,499	61,614	56,511	53,901	60,031
	Exports	12,532	10,575	8,966	15,055	24,727	11,162
Steel for Fabrication	Imports	278,232	463,477	529,327	184,164	286,866	354,980
	Exports	236,427	257,126	301,366	185,537	216,815	206,955
Aluminium for Fabrication	Imports	272,983	277,251	315,948	268,155	325,157	408,816
	Exports	220,651	234,348	216,596	123,494	131,665	160,722
Profiles of Vinyl Chloride	Imports	48,747	41,560	44,169	44,827	35,911	25,099
	Exports	27,349	33,766	25,781	23,770	23,337	24,027
Slag for Construction	Imports	4,626	8,607	11,580	2,331	5,825	1,906
	Exports	1,747	1,231	1,018	921	1,112	1,280
Tar & Bituminous Mixtures	Imports	9,261	12,285	17,424	15,156	27,742	33,081
	Exports	26,008	27,895	27,680	22,781	27,613	26,921
Lime	Imports	2,389	2,767	1,579	1,335	1,480	2,355
	Exports	11,630	12,697	14,060	13,283	13,684	17,946

Current Prices (£'000)

2011 Q1	Q2	Q3	Q4	2012 Q1	Q2		
3,052,655 (R)	3,074,094 (R)	3,111,864 (R)	2,967,894 (R)	2,968,961 (R)	3,029,873	Imports	All Building Materials & Components
1,506,639 (R)	1,599,110 (R)	1,563,457 (R)	1,474,685 (R)	1,399,569 (R)	1,409,314	Exports	
(1,546,016) (R)	(1,474,984) (R)	(1,548,407) (R)	(1,493,209) (R)	(1,569,392) (R)	(1,620,559)	Balance	
36,079	64,025	48,770	51,862 (R)	44,501 (R)	48,590	Imports	All Raw Materials
20,489	45,713	43,188	31,135	15,752 (R)	21,224	Exports	
(15,590)	(18,312)	(5,582)	(20,727) (R)	(28,749) (R)	(27,366)	Balance	
1,534	2,321	2,077	1,626	2,126	1,623	Imports	Sand for construction
1,683	2,081	2,100	1,919	1,561	1,490	Exports	
9,060	9,372	7,072	15,776	6,865	9,688	Imports	Crushed Rock : uncoated
14,865	24,367	19,164	19,841	12,032 (R)	16,756	Exports	
587	859	795	816	666	941	Imports	Crushed Rock : coated
483	1,404	1,529	1,311	534	1,311	Exports	
21,577	33,896	27,705	24,176 (R)	28,810 (R)	32,797	Imports	Building Stone : unprocessed
916	1,398	817	585	390	502	Exports	
874	1,463	1,395	954	960 (R)	1,286	Imports	Slate : unprocessed
221	247	207	247	343 (R)	256	Exports	
2,221	2,163	1,112	1,788	1,956	2,037	Imports	Gypsum & Anhydrite
293	214	260	268	343	227	Exports	
226	13,951	8,614	6,726	3,118	218	Imports	Bituminous Shale
2,028	16,002	19,111	6,964	549	682	Exports	
402,212 (R)	476,046 (R)	435,722 (R)	384,684 (R)	426,324 (R)	463,043	Imports	All Semi-Manufactures
131,875	131,779 (R)	116,753 (R)	105,704 (R)	112,003 (R)	114,124	Exports	
(270,337) (R)	(344,267) (R)	(318,969) (R)	(278,980) (R)	(314,321) (R)	(348,919)	Balance	
4,324	4,550	5,645	5,421	6,925 (R)	5,255	Imports	Clinker
360	320	1,426	657	649	365	Exports	
148,870	184,809 (R)	155,493	133,641 (R)	163,066 (R)	178,572	Imports	Sawn Wood > 6mm thick
3,565	4,570	3,789	2,747	2,833 (R)	3,418	Exports	
570	480	458	434	770 (R)	545	Imports	Densified Wood
150	137	164	118	149	98	Exports	
7,094	7,630	11,540	8,215 (R)	6,932 (R)	6,274	Imports	Particle Board
1,980	2,015	1,878	2,171 (R)	3,231	2,428	Exports	
36,251	36,602	33,591 (R)	26,778 (R)	27,997 (R)	37,181	Imports	Laminated Wood
3,512	2,215	2,969	2,355	1,930 (R)	2,314	Exports	
14,316 (R)	14,329	15,955	15,431 (R)	14,995 (R)	14,712	Imports	Fibreboard
3,153	2,416 (R)	2,845	2,748	3,453 (R)	3,354	Exports	
86,504	99,334	85,617	83,525 (R)	88,249 (R)	102,552	Imports	Steel for Fabrication
62,759	55,568	44,091	44,537	49,179 (R)	41,567	Exports	
91,980	111,578 (R)	108,063 (R)	97,195 (R)	104,172 (R)	102,392	Imports	Aluminium for Fabrication
41,720	46,435 (R)	39,281 (R)	33,286 (R)	35,312 (R)	40,616	Exports	
6,243	6,083 (R)	7,196	5,577	7,980 (R)	6,651	Imports	Profiles of Vinyl Chloride
5,328	7,448	6,125	5,126	5,779 (R)	5,169	Exports	
324	742	437	403	274	585	Imports	Slag for Construction
243	468	351	218	231	352	Exports	
5,357	9,539	11,147	7,038	4,596 (R)	7,746	Imports	Tar & Bituminous Mixtures
4,962	6,239	8,641	7,079	4,086 (R)	10,324	Exports	
379	370 (R)	580	1,026	368	578	Imports	Lime
4,143	3,948	5,193	4,662	5,171	4,119	Exports	

EXTERNAL TRADE

Table 14 : Value of Overseas Trade in Selected Materials and Components for Constructional Use : Imports (cif) & Exports (fob)

United Kingdom		Current Prices (£'000)					
		2006	2007	2008	2009	2010	2011
All Products & Components	Imports	8,744,623	10,006,223	10,496,888	8,851,211	9,818,488	10,307,107
	Exports	5,096,671	5,378,349	5,981,663	4,929,740	5,159,197	5,517,255
	Balance	(3,647,952)	(4,627,874)	(4,515,225)	(3,921,471)	(4,659,291)	(4,789,852)
Wood sleepers (rail & tram)	Imports	6,844	7,907	10,736	5,761	5,065	7,634
	Exports	605	905	1,074	688	717	893
Building Stone : processed	Imports	206,066	243,019	252,176	211,999	217,570	177,755
	Exports	36,148	34,465	38,557	37,466	30,751	10,603
Slate Roofing Tiles*	Imports	50,718	58,165	65,872	57,067	63,188	..
	Exports	5,479	6,941	6,559	8,552	6,286	..
Other Slate Products*	Imports	10,641	8,963	8,204	8,002	8,381	..
	Exports	2,406	2,348	1,643	1,141	1,725	..
Slate Products*	Imports	72,289
	Exports	7,413
Portland Cement	Imports	52,408	59,422	65,930	54,475	52,246	48,735
	Exports	28,179	26,525	13,271	4,897	4,178	5,481
Other Cements	Imports	24,858	24,705	31,452	47,618	50,669	61,532
	Exports	32,357	31,336	29,824	24,202	35,097	37,960
Steel Sheet Piling	Imports	55,911	71,747	78,763	48,577	61,527	51,576
	Exports	18,609	20,205	32,009	24,175	16,226	18,568
Ready-Mixed Concrete	Imports	612	686	826	711	822	36
	Exports	10,116	10,378	12,639	4,600	3,378	3,036
Concrete Reinforcing Bars	Imports	150,492	181,795	210,556	72,138	86,842	135,802
	Exports	38,587	107,236	194,136	68,087	60,252	46,970
Mortars	Imports	5,247	6,225	7,021	7,949	7,357	8,852
	Exports	5,998	5,772	6,410	5,360	3,757	8,936
Clay Bricks	Imports	29,102	35,245	25,877	18,675	19,778	22,918
	Exports	13,540	10,591	7,133	3,703	3,162	2,842
Clay Roofing Tiles	Imports	10,285	10,348	10,104	7,576	9,116	8,889
	Exports	1,680	303	276	511	589	207
Clay Pipes	Imports	600	669	313	146	225	258
	Exports	6,262	5,518	5,775	4,177	3,472	4,124
Other Clay Products	Imports	5,885	5,602	6,668	5,453	5,225	6,068
	Exports	11,123	17,502	18,852	2,851	3,188	3,566
Concrete Blocks & Bricks	Imports	4,544	11,475	8,615	4,421	4,369	7,466
	Exports	26,813	27,318	21,102	11,844	9,203	9,421
Concrete Roofing Tiles*	Imports	4,845	4,664	7,195	7,342	5,017	..
	Exports	7,857	7,013	3,844	2,402	2,949	..
Other Concrete Tiles & Paving*	Imports	14,703	16,130	18,353	15,576	13,297	..
	Exports	33,692	38,280	34,756	19,151	13,594	..
Concrete Tiles and Pavings*	Imports	19,565
	Exports	13,478
Prefabricated Concrete Products	Imports	22,439	26,763	34,841	23,582	28,811	20,514
	Exports	28,936	23,240	19,042	8,967	12,390	4,432
Concrete Pipes	Imports	27,303	32,767	36,740	40,646	45,485	61,426
	Exports	27,010	32,536	31,413	30,366	24,339	26,578

Current Prices (£'000)

2011 Q1	Q2	Q3	Q4	2012 Q1	Q2		
2,614,364 (R)	2,534,023 (R)	2,627,372 (R)	2,531,348 (R)	2,498,136 (R)	2,518,240	Imports	All Products & Components
1,354,275 (R)	1,421,618 (R)	1,403,516 (R)	1,337,846 (R)	1,271,814 (R)	1,273,966	Exports	
(1,260,089) (R)	(1,112,405) (R)	(1,223,856) (R)	(1,193,502) (R)	(1,226,322) (R)	(1,244,274)	Balance	
1,614	1,935	2,073	2,012	2,429 (R)	3,310	Imports	Wood sleepers (rail & tram)
106	382	130	275	547	1,776	Exports	
46,565	44,937	42,685	43,568	43,795 (R)	44,687	Imports	Building Stone : processed
2,342	3,300	2,696	2,265	1,954 (R)	2,600	Exports	
..	Imports	Slate Roofing Tiles*
..	Exports	
..	Imports	Other Slate Products*
..	Exports	
16,918	18,839	19,151	17,381	16,144 (R)	18,509	Imports	Slate Products*
1,630	1,911	2,105	1,767	1,211 (R)	1,490	Exports	
11,503	12,829	12,382	12,021	12,933 (R)	10,133	Imports	Portland Cement
656	2,180	1,383	1,262	1,400	1,127	Exports	
14,289	16,686 (R)	16,570	13,987	11,339 (R)	11,402	Imports	Other Cements
9,937	9,123	10,978	7,922	9,434 (R)	11,450	Exports	
16,157	15,444	9,132	10,843 (R)	21,150 (R)	14,088	Imports	Steel Sheet Piling
4,839	3,179 (R)	7,005 (R)	3,545 (R)	3,376 (R)	3,303	Exports	
11	17	1	7	23	1	Imports	Ready-Mixed Concrete
664	646	1,036	690	572	560	Exports	
34,672	36,886	32,505	31,739	46,804 (R)	49,501	Imports	Concrete Reinforcing Bars
8,964	15,667	14,385	7,954	8,672 (R)	12,532	Exports	
2,335	2,115 (R)	2,392	2,010	2,563 (R)	2,360	Imports	Mortars
1,834	2,109 (R)	3,141 (R)	1,852 (R)	986 (R)	1,176	Exports	
5,445	5,731	6,012	5,730	6,503 (R)	6,264	Imports	Clay Bricks
624	737	750	731	789	1,129	Exports	
2,162	2,314	2,311	2,102	2,942	3,791	Imports	Clay Roofing Tiles
76	29	74	28	37 (R)	42	Exports	
82	61	90	25	31	493	Imports	Clay Pipes
917	1,193	1,106	908	705	921	Exports	
1,814	1,705	1,612 (R)	937	1,387	1,223	Imports	Other Clay Products
1,588	820	481	677	856	697	Exports	
1,719	1,778	2,293	1,676	2,075	1,962	Imports	Concrete Blocks & Bricks
1,857	3,043 (R)	2,423	2,098 (R)	2,296 (R)	1,850	Exports	
..	Imports	Concrete Roofing Tiles*
..	Exports	
..	Imports	Other Concrete Tiles & Paving*
..	Exports	
4,631	5,063	4,912	4,959	4,202 (R)	5,144	Imports	Concrete Tiles and Pavings*
2,524	4,245	3,948	2,761	2,407	3,543	Exports	
6,694	6,260	3,609 (R)	3,951	4,704	2,921	Imports	Prefabricated Concrete Products
1,970	820	841	801	768 (R)	587	Exports	
17,212	14,291	15,711	14,212 (R)	13,631 (R)	14,933	Imports	Concrete Pipes
5,505	5,989	7,710	7,374	6,415 (R)	6,107	Exports	

* Due to changes to in European Commission product classifications Slate Roofing Tiles and Other Slate Products have been combined. Similarly, Concrete Roofing Tiles and Other Concrete Tiles and Pavings have been combined.

EXTERNAL TRADE

Table 14 : Value of Overseas Trade in Selected Materials and Components for Constructional Use : Imports (cif) & Exports (fob)

United Kingdom		Current Prices (£'000)					
		2006	2007	2008	2009	2010	2011
Products & Components (continued)							
Structural Units (steel)	Imports	361,685	526,140	564,645	470,772	604,136	648,018
	Exports	445,237	498,331	604,520	505,127	486,891	472,789
Structural Units (aluminium)	Imports	149,756	220,258	251,909	292,334	178,196	235,864
	Exports	81,708	81,777	98,289	71,158	54,971	61,224
Steel Tubes & Hollow Sections	Imports	117,181	142,420	157,616	108,794	130,955	154,120
	Exports	109,871	114,756	132,537	82,990	108,503	128,588
Bituminous Roofing Felt*	Imports	21,082	25,627	30,853	35,139	39,835	..
	Exports	5,756	5,406	3,507	3,392	2,744	..
Other Asphalt products*	Imports	8,449	9,966	9,999	9,987	10,750	..
	Exports	16,756	16,768	18,030	19,595	14,474	..
Asphalt Products*	Imports	54,421
	Exports	18,070
Mineral Insulating Materials	Imports	84,002	81,851	78,961	74,096	81,060	83,477
	Exports	137,321	139,360	132,697	106,865	146,430	164,857
Glass Fibre**	Imports	2,667	1,482	1,185	552	381	602
	Exports	820	1,188	2,829	1,220	1,075	2,669
Fibre Cement Products	Imports	24,343	31,344	28,053	28,663	31,019	35,084
	Exports	6,619	6,668	7,680	4,847	5,849	9,199
Building Plasters ¹	Imports	5,726	6,172	6,868	8,845
	Exports	8,122	7,622	8,077	7,475
Plasters ¹	Imports	13,820	11,656
	Exports	7,905	9,168
Plasterboard	Imports	34,275	30,302	16,057	13,683	15,007	18,972
	Exports	24,261	19,798	18,397	16,505	12,912	12,522
Copper Pipes	Imports	212,455	217,861	245,212	182,487	241,116	228,049
	Exports	167,830	153,412	171,581	116,520	146,447	142,770
Lead Pipes & Fittings**	Imports	168	93	18	509	148	..
	Exports	204	48	626	209	243	..
Zinc Pipes & Fittings*	Imports	328	1,154	918	494	757	..
	Exports	5,446	7,166	6,016	4,388	914	..
Other Zinc Building Products*	Imports	14,481	12,447	13,117	10,409	13,000	..
	Exports	23,874	20,946	22,026	22,639	26,529	..
Zinc Building Products*	Imports	12,933
	Exports	24,595
Plastic Pipes	Imports	100,143	114,727	133,929	117,126	105,667	114,260
	Exports	187,793	205,332	211,718	202,745	149,389	156,648
Other Plastic Building Products	Imports	133,409	148,828	149,235	138,250	148,270	157,129
	Exports	100,498	115,008	117,407	96,902	110,278	129,742
Builders Ironmongery	Imports	452,336	498,373	505,665	278,144	312,316	314,993
	Exports	155,065	157,424	165,476	94,402	112,191	128,039
Nails & Screws	Imports	51,836	59,853	61,080	48,123	66,865	64,896
	Exports	15,228	12,553	12,851	8,281	8,949	11,186
Mastics, Putty	Imports	138,982	148,599	151,898	132,061	143,430	151,902
	Exports	95,347	103,998	119,256	110,080	115,349	139,748
Paints & Varnishes	Imports	315,961	339,581	356,451	345,977	376,374	403,309
	Exports	436,044	442,126	551,564	503,518	552,294	622,468

¹ From Q1 2010 onwards the Plasters category will contain Building Plaster and Other Plasters as Building Plasters data is no longer collected

Current Prices (£'000)

2011 Q1	Q2	Q3	Q4	2012 Q1	Q2	Products & Components (continued)	
167,529 (R)	169,635 (R)	171,524 (R)	139,330 (R)	57,217 (R)	73,964	Imports	Structural Units (steel)
120,779	125,524 (R)	120,479 (R)	106,007 (R)	40,915	41,096	Exports	
42,946 (R)	45,128 (R)	76,329 (R)	71,461 (R)	61,059 (R)	61,114	Imports	Structural Units (aluminium)
14,643	14,767	16,171	15,643	13,088 (R)	12,648	Exports	
46,581	37,819 (R)	35,876 (R)	33,844 (R)	44,445 (R)	44,584	Imports	Steel Tubes & Hollow Sections
34,704	32,287 (R)	33,632 (R)	27,965 (R)	31,621 (R)	30,662	Exports	
..	Imports	Bituminous Roofing Felt*
..	Exports	
..	Imports	Other Asphalt products*
..	Exports	
12,141	13,049	15,092	14,139	14,392 (R)	13,171	Imports	Asphalt Products*
3,564	4,384	4,802	5,320	5,244 (R)	3,159	Exports	
20,087	19,513	22,534	21,343	20,041 (R)	21,889	Imports	Mineral Insulating Materials
38,559	42,264 (R)	44,372 (R)	39,662 (R)	46,944 (R)	46,564	Exports	
108	154	201	139	Imports	Glass Fibre**
521	709	892	547	Exports	
7,773	8,974	9,539	8,798	9,242 (R)	8,261	Imports	Fibre Cement Products
1,316	2,879	2,692	2,312	2,210	2,338	Exports	
..	Imports	Building Plasters ¹
..	Exports	
2,815	3,142	3,060	2,639	3,187 (R)	3,226	Imports	Plasters ¹
2,369	2,428	2,289	2,082	2,316 (R)	2,305	Exports	
4,714	5,155	5,088	4,015	5,035 (R)	3,833	Imports	Plasterboard
3,795	2,901	2,989	2,837	3,220 (R)	3,156	Exports	
58,471 (R)	58,777 (R)	58,919 (R)	51,882 (R)	58,090 (R)	54,126	Imports	Copper Pipes
36,413 (R)	38,417 (R)	34,243 (R)	33,697 (R)	30,854 (R)	31,091	Exports	
..	Imports	Lead Pipes & Fittings**
..	Exports	
..	Imports	Zinc Pipes & Fittings*
..	Exports	
..	Imports	Other Zinc Building Products*
..	Exports	
3,317	3,550 (R)	2,827	3,239	3,467 (R)	3,330	Imports	Zinc Building Products*
6,806	6,976	5,121	5,692	7,515 (R)	8,095	Exports	
29,482 (R)	29,381 (R)	30,699 (R)	24,698 (R)	27,164 (R)	28,868	Imports	Plastic Pipes
39,092	39,968	39,686	37,902 (R)	37,603 (R)	48,570	Exports	
37,820	40,866 (R)	40,534	37,909 (R)	40,366 (R)	37,359	Imports	Other Plastic Building Products
28,533	35,663	35,593 (R)	29,953 (R)	28,288 (R)	25,597	Exports	
77,870 (R)	75,793 (R)	81,906 (R)	79,424 (R)	83,881 (R)	88,692	Imports	Builders Ironmongery
34,244	33,071 (R)	31,787 (R)	28,937 (R)	31,557 (R)	31,087	Exports	
16,168	15,538	17,329	15,861	17,347 (R)	14,434	Imports	Nails & Screws
2,103	3,524	3,042 (R)	2,517 (R)	2,151 (R)	1,774	Exports	
34,218	38,802 (R)	41,865	37,017 (R)	40,373 (R)	40,761	Imports	Mastics, Putty
33,328	37,242 (R)	34,896 (R)	34,282 (R)	32,561 (R)	31,675	Exports	
98,148	101,467 (R)	109,968 (R)	93,726 (R)	108,140 (R)	105,247	Imports	Paints & Varnishes
148,917 (R)	168,216	157,897	147,438 (R)	164,660 (R)	159,414	Exports	

* Due to changes to in European Commission product classifications Bituminous Roofing Felt and Other Asphalt products have been combined. Similarly, Zinc Pipes & Fittings and Other Zinc Building Products have been combined.

** Data for Lead Pipes and Fittings and Glass Fibre are no longer collected.

EXTERNAL TRADE

Table 14 : Value of Overseas Trade in Selected Materials and Components for Constructional Use : Imports (cif) & Exports (fob)

United Kingdom		Current Prices (£'000)					
		2006	2007	2008	2009	2010	2011
Products & Components (continued)							
Unglazed Ceramic Tiles	Imports	54,271	64,691	71,099	62,181	56,551	63,864
	Exports	2,475	4,420	3,607	2,424	2,829	2,817
Glazed Ceramic Tiles	Imports	285,080	290,867	279,656	256,303	224,557	212,986
	Exports	21,444	20,554	17,706	15,671	15,455	18,784
Ceramic Sanitaryware	Imports	173,687	181,603	174,194	159,123	168,666	178,028
	Exports	54,231	58,229	53,471	37,635	37,883	37,259
Plastic Sanitaryware	Imports	105,586	126,472	120,004	114,695	112,513	109,817
	Exports	78,717	78,811	83,908	79,444	67,886	62,582
Metal Sanitaryware	Imports	123,203	139,820	143,118	111,737	124,666	136,536
	Exports	32,212	33,511	33,167	31,969	28,274	32,644
Flat Glass	Imports	55,901	71,800	61,061	53,819	61,048	64,992
	Exports	67,142	83,174	107,783	60,380	73,175	109,162
Other Glass Products	Imports	78,695	76,235	98,993	82,857	81,083	85,002
	Exports	31,631	37,712	40,296	34,188	33,081	32,612
Wood Veneers	Imports	40,586	38,516	39,407	26,102	31,681	36,202
	Exports	10,607	10,243	10,034	5,747	5,824	7,593
Wood Mouldings	Imports	79,513	73,907	64,579	55,648	66,802	59,139
	Exports	20,362	18,289	11,169	8,861	9,660	8,977
Wood Block Flooring	Imports	132,978	125,111	125,242	112,661	144,394	139,916
	Exports	8,448	5,465	6,136	5,746	4,535	4,540
Other Builder's Woodwork	Imports	93,869	109,023	101,242	80,645	99,394	89,758
	Exports	21,562	19,079	15,908	14,395	14,319	16,308
Windows (wood)	Imports	71,679	84,257	121,171	110,061	111,934	118,893
	Exports	9,465	12,880	10,219	10,721	7,786	9,885
Doors (wood)	Imports	191,637	205,158	209,133	184,609	217,810	202,006
	Exports	38,546	37,008	26,929	19,395	16,873	13,323
Doors & Windows (steel)	Imports	54,493	40,294	39,652	39,726	35,987	35,431
	Exports	21,231	25,824	26,300	20,643	19,222	18,996
Doors & Windows (aluminium)	Imports	68,235	65,655	63,705	64,279	72,365	70,526
	Exports	35,883	32,687	25,473	24,410	19,950	24,141
Doors & Windows (plastic)	Imports	41,045	39,459	39,377	43,885	46,337	52,738
	Exports	68,641	63,218	56,119	41,193	44,433	39,423
Cork Tiles	Imports	2,540	2,877	2,258	1,779	2,951	4,018
	Exports	2,878	1,611	1,641	1,702	1,646	2,139
Linoleum Floor Coverings	Imports	213,518	242,787	256,585	244,149	279,065	317,850
	Exports	188,215	195,735	224,522	213,628	228,832	233,662
Wallpaper	Imports	40,997	58,962	58,636	54,487	56,701	58,370
	Exports	54,868	67,165	73,506	66,782	82,940	85,873
Textile Wall Coverings	Imports	1,187	1,572	2,833	2,346	3,323	3,007
	Exports	373	598	500	357	609	688

Current Prices (£'000)

2011 Q1	Q2	Q3	Q4	2012 Q1	Q2	Products & Components (continued)	
14,962 814	16,597 545	16,596 793	15,709 665	16,394 (R) 1,001	16,550 942	Imports Exports	Unglazed Ceramic Tiles
57,997 4,525	54,092 4,680	51,627 (R) 4,337	49,270 (R) 5,242	51,727 (R) 4,013	59,967 4,424	Imports Exports	Glazed Ceramic Tiles
49,027 9,853	42,439 (R) 10,271 (R)	43,042 (R) 9,260 (R)	43,520 (R) 7,875 (R)	46,396 (R) 7,626 (R)	45,497 8,474	Imports Exports	Ceramic Sanitaryware
27,356 17,209	26,587 (R) 15,805 (R)	27,516 (R) 15,468 (R)	28,358 (R) 14,100 (R)	27,758 (R) 12,929 (R)	27,502 12,965	Imports Exports	Plastic Sanitaryware
36,744 8,407	35,356 (R) 8,642 (R)	32,730 (R) 8,033 (R)	31,706 (R) 7,562 (R)	31,149 (R) 7,557 (R)	31,973 7,787	Imports Exports	Metal Sanitaryware
15,263 22,498	15,040 22,737	17,760 (R) 32,049	16,929 31,878	15,749 (R) 28,047 (R)	16,048 19,601	Imports Exports	Flat Glass
20,081 8,907	20,766 (R) 7,537	23,529 (R) 9,186	20,626 (R) 6,982	21,245 (R) 8,194 (R)	22,150 7,798	Imports Exports	Other Glass Products
9,007 1,564	9,486 1,762	8,959 2,546	8,750 (R) 1,721	8,504 (R) 2,091 (R)	7,761 2,104	Imports Exports	Wood Veneers
17,505 2,393	16,697 (R) 2,446	13,458 2,354	11,479 1,784	15,066 (R) 2,076 (R)	16,827 2,018	Imports Exports	Wood Mouldings
35,886 1,129	32,822 1,138	35,596 914	35,612 (R) 1,359	32,888 (R) 1,178	40,746 1,087	Imports Exports	Wood Block Flooring
21,041 4,274	25,125 3,976	22,664 4,028	20,928 (R) 4,030	22,474 (R) 4,040 (R)	23,543 3,480	Imports Exports	Other Builder's Woodwork
27,632 2,786	29,394 2,439	31,038 2,701	30,829 (R) 1,959	29,501 (R) 1,730 (R)	26,717 2,037	Imports Exports	Windows (wood)
50,331 2,927	54,883 3,913	51,365 3,441	45,427 3,042	45,267 (R) 3,270 (R)	47,531 3,831	Imports Exports	Doors (wood)
9,144 4,399	8,652 4,315	9,050 4,953	8,585 5,329	9,494 (R) 4,892 (R)	10,778 5,933	Imports Exports	Doors & Windows (steel)
15,478 (R) 5,117	17,448 (R) 6,108	19,960 (R) 5,269	17,640 (R) 7,647	18,755 (R) 5,003 (R)	17,097 5,138	Imports Exports	Doors & Windows (aluminium)
11,896 7,238	13,203 14,141	14,778 8,980	12,861 9,064	13,884 (R) 7,149 (R)	16,264 7,790	Imports Exports	Doors & Windows (plastic)
1,574 604	871 874	776 376	797 285	731 581	754 434	Imports Exports	Cork Tiles
75,968 (R) 56,086	84,638 (R) 62,851	79,523 60,695	77,721 54,030	78,059 (R) 53,978 (R)	77,873 54,440	Imports Exports	Linoleum Floor Coverings
15,045 23,498 (R)	15,664 23,365 (R)	12,400 19,677 (R)	15,261 19,333 (R)	13,958 (R) 17,335 (R)	14,752 18,224	Imports Exports	Wallpaper
689 145	655 118	900 163	763 262	861 101 (R)	771 221	Imports Exports	Textile Wall Coverings

EXTERNAL TRADE

Table 14 : Value of Overseas Trade in Selected Materials and Components for Constructional Use : Imports (cif) & Exports (fob)

United Kingdom		Current Prices (£'000)					
		2006	2007	2008	2009	2010	2011
Products & Components (continued)							
Fitted Kitchens (assembled)	Imports	98,938	144,017	171,688	130,058	111,345	80,006
	Exports	34,260	35,322	24,163	17,307	16,122	15,729
Prefabricated Buildings (wood)	Imports	21,986	49,086	40,341	34,264	32,687	34,909
	Exports	22,603	27,807	15,170	13,234	10,546	8,391
Prefabricated Buildings (steel)	Imports	30,281	30,083	50,546	46,291	29,783	37,366
	Exports	42,881	27,464	46,140	48,512	37,158	50,070
Prefabricated Buildings (other)	Imports	67,586	73,414	74,165	44,887	34,323	29,862
	Exports	45,997	35,795	72,310	28,104	17,643	19,082
Mobile Homes	Imports	7,196	7,113	6,574	5,065	2,165	1,430
	Exports	8,574	11,291	7,250	7,750	3,666	2,427
Taps & Valves	Imports	265,657	277,804	315,427	269,199	322,207	334,356
	Exports	62,345	72,708	60,597	64,447	73,202	69,125
Pumps (circulating)	Imports	25,544	24,274	21,754	19,900	21,878	22,061
	Exports	28,407	27,131	27,964	23,603	32,078	22,154
Central Heating Boilers	Imports	473,691	493,841	547,726	566,588	554,452	572,298
	Exports	76,578	70,581	80,756	91,053	74,832	77,852
Radiators	Imports	193,948	197,513	184,218	175,518	189,792	178,677
	Exports	37,707	46,937	57,884	34,303	31,085	28,270
Water Heaters	Imports	75,237	88,897	105,755	105,711	84,627	90,676
	Exports	67,902	64,471	84,810	64,883	63,036	67,672
Space Heaters	Imports	120,029	107,581	110,403	114,047	136,729	148,616
	Exports	39,930	37,313	35,118	32,068	32,001	32,926
Fan Systems	Imports	152,830	198,750	161,772	127,327	172,161	190,441
	Exports	132,081	94,651	114,006	107,846	109,339	124,299
Air Conditioning Equipment	Imports	379,149	514,454	644,353	462,588	527,857	576,155
	Exports	201,257	231,144	268,134	240,594	270,112	262,557
Air Purifying Equipment	Imports	31,441	29,828	41,389	50,854	53,220	66,549
	Exports	114,377	120,706	138,002	102,158	148,638	183,241
Hand Driers	Imports	5,010	4,057	7,634	7,443	8,987	10,496
	Exports	1,036	1,648	1,017	1,247	1,905	1,950
Meters	Imports	25,666	24,502	24,155	24,237	28,701	44,041
	Exports	25,025	26,216	47,988	42,969	52,825	72,518
Plugs & Sockets	Imports	232,657	231,664	269,479	257,049	303,121	329,210
	Exports	169,346	148,672	153,173	137,529	182,364	214,654
Electrical Wires	Imports	1,028,495	1,303,905	1,236,486	909,830	1,213,470	1,346,886
	Exports	458,568	521,508	554,723	425,815	515,544	571,975
Electrical Insulators	Imports	37,729	30,477	34,957	29,102	30,596	26,548
	Exports	28,858	33,830	32,548	26,983	32,574	30,485
Lamps & Fittings	Imports	392,781	449,230	462,930	424,435	515,852	520,951
	Exports	195,049	221,180	236,971	223,741	216,816	266,980
Fire & Security Alarms	Imports	153,054	144,891	139,973	136,550	151,642	122,662
	Exports	150,929	154,520	182,447	238,608	208,281	173,480
Lifts & Escalators	Imports	104,250	118,401	129,307	115,017	96,973	102,832
	Exports	24,833	43,142	28,699	19,697	14,628	21,220

Current Prices (£'000)

2011 Q1	Q2	Q3	Q4	2012 Q1	Q2	Products & Components (continued)	
20,416 3,740	20,495 4,319	20,669 3,696	18,426 (R) 3,974	19,466 3,660	20,755 3,184	Imports Exports	Fitted Kitchens (assembled)
8,491 1,508	10,924 2,857	9,193 2,128 (R)	6,301 1,898 (R)	7,676 (R) 1,897 (R)	6,689 1,764	Imports Exports	Prefabricated Buildings (wood)
9,898 9,088	12,310 16,862	6,217 8,131 (R)	8,941 15,989 (R)	6,864 7,766 (R)	8,037 11,446	Imports Exports	Prefabricated Buildings (steel)
8,097 4,378	10,612 4,340	5,488 5,457	5,665 4,907	12,185 12,226	10,602 5,068	Imports Exports	Prefabricated Buildings (other)
139 721	751 418	300 726	240 562	675 1,865 (R)	922 1,699	Imports Exports	Mobile Homes
87,884 17,099	82,811 (R) 18,174 (R)	77,734 (R) 15,997 (R)	85,927 (R) 17,855 (R)	84,729 (R) 21,077 (R)	85,760 21,165	Imports Exports	Taps & Valves
6,432 6,347	4,405 5,140	5,525 3,309	5,699 7,358	7,109 (R) 3,669 (R)	5,639 2,115	Imports Exports	Pumps (circulating)
150,367 (R) 21,483 (R)	122,525 (R) 17,834 (R)	147,133 15,819	152,273 22,716	120,962 (R) 14,548 (R)	112,602 18,191	Imports Exports	Central Heating Boilers
53,679 7,046	40,818 (R) 4,000 (R)	39,529 (R) 8,389 (R)	44,651 (R) 8,835 (R)	45,122 (R) 9,634 (R)	40,663 8,860	Imports Exports	Radiators
20,465 18,571 (R)	22,757 (R) 16,865 (R)	23,324 16,945	24,130 15,291	21,411 (R) 16,965 (R)	20,547 15,751	Imports Exports	Water Heaters
30,260 8,494	24,160 6,238	41,716 8,230 (R)	52,480 9,964	23,030 (R) 5,132 (R)	15,458 4,305	Imports Exports	Space Heaters
44,987 29,222	50,787 31,358	49,009 (R) 30,910	45,658 (R) 32,809	48,053 (R) 34,328 (R)	48,075 34,318	Imports Exports	Fan Systems
156,509 66,726	148,676 (R) 70,182	151,664 65,643	119,306 60,006 (R)	129,190 (R) 58,171 (R)	138,204 73,663	Imports Exports	Air Conditioning Equipment
16,963 47,514	15,225 45,412	18,360 47,412	16,001 42,903	15,724 (R) 45,023 (R)	20,934 50,985	Imports Exports	Air Purifying Equipment
2,567 395	2,155 484	2,709 578	3,065 493 (R)	2,645 (R) 510 (R)	2,575 292	Imports Exports	Hand Driers
5,776 15,115	6,454 18,946	16,569 (R) 21,108	15,242 (R) 17,349	16,565 (R) 21,900	14,236 20,252	Imports Exports	Meters
83,529 52,825	81,090 (R) 56,249	86,739 (R) 55,816 (R)	77,852 (R) 49,764 (R)	78,914 (R) 54,683 (R)	82,612 53,454	Imports Exports	Plugs & Sockets
359,637 (R) 141,176	312,581 (R) 138,526 (R)	319,010 (R) 145,476 (R)	355,658 (R) 146,797 (R)	366,207 (R) 139,288 (R)	357,328 125,486	Imports Exports	Electrical Wires
7,151 (R) 7,772	6,578 7,599	7,384 7,323	5,435 7,791	7,692 (R) 7,132 (R)	9,341 6,290	Imports Exports	Electrical Insulators
124,457 62,092	127,873 (R) 64,168 (R)	133,482 67,031 (R)	135,139 (R) 73,689 (R)	139,395 (R) 67,835 (R)	139,737 67,711	Imports Exports	Lamps & Fittings
35,129 (R) 46,407	29,198 (R) 42,667 (R)	27,973 (R) 42,638 (R)	30,362 (R) 41,768 (R)	34,611 (R) 45,102 (R)	33,607 43,041	Imports Exports	Fire & Security Alarms
24,894 6,464	26,789 4,724	27,647 4,756	23,502 5,276	23,950 (R) 3,440	29,235 6,077	Imports Exports	Lifts & Escalators

© Crown copyright 2012

Published under licence from the Controller of Her Majesty's Stationery Office.

Applications for reproductions should be made in writing to :-

The Copyright Unit, Her Majesty's Stationery Office, St. Clements House,
2-16 Colegate, Norwich NR3 1BQ

September 2012

URN 12 / 313h

ISSN 0264-6188