

Sea Passenger Statistics: 2011

This Statistical Release presents the statistics on UK sea passenger movements for 2011

It includes all vehicle drivers and their passengers, and foot passengers on ferries, and those on cruises and long sea journeys. Passengers on international short sea (ferry) routes are generally those to Belgium, Denmark, Faroe Isles, Finland, France, Germany, Ireland, Netherlands, Norway, Spain and Sweden. Domestic routes include those to Northern Ireland, the Isle of Man, the Channel Islands and Orkney and Shetland, other sea crossings (e.g. Great Britain to the Scilly Isles), inter-island routes and river crossings.



Key findings	1
International passengers	2
Cruise passengers	4
Domestic passengers	4
Strengths & weaknesses of the data	5
Background notes	5

The key findings:

- In 2011, 21.1 million international ferry passengers travelled to and from the UK, this is 3 per cent lower than the 2010 figure (21.9 million) and 24 per cent lower than in 2001.
- Dover, the largest UK ferry port, handled 12.8 million journeys in 2011 (3 per cent lower than 2010 and 19 per cent lower than in 2001).
- The next busiest ports in 2011 were Portsmouth (2.1 million passengers) and Holyhead (2.0 million passengers), where there were decreases of 7 and 3 per cent respectively on 2010.
- In 2010 (the latest year for which data is available), there were 1.6 million cruise journeys, 16 per cent increase on 2009, and 55 thousand long sea journey passengers.
- In 2011, there were 3.0 million domestic passenger journeys on the three major routes (between mainland Britain and Northern Ireland, the Isle of Man, and the Channel Islands), a 2 per cent decrease compared with 2010.
- *For comparison there were 19.0 million passenger journeys through the Channel Tunnel in 2011.*

FURTHER INFORMATION

Media Enquiries:
020 7944 3066

Public Enquiries:
Margaret Talbot
020 7944 4131
maritime.stats@dft.gsi.gov.uk

1. International ferry passengers

- International sea passenger numbers on short sea ferry routes more than doubled between 1975 and the mid 1990s. Since 1997 the trend in passenger journeys has been downward although slight growth was seen in 2002, 2007 and 2010. Figure 1 shows international passenger movements between 1990 and 2011 together with Channel Tunnel passenger traffic (including both Eurostar and Eurotunnel Shuttle services).
- Thames and Kent ports handled 12.9 million passengers in 2011, 3 per cent lower than 2010. There were 3.1 million passengers at South Coast ports (down 3 per cent), 2.9 million at West Coast ports (down 6 per cent) and 2.3 million at East Coast ports (down 2 per cent).
- Between 2001 and 2011 all port groups experienced a fall in passenger numbers: South Coast by 37 per cent, West Coast by 25 per cent, East Coast by 26 per cent and Thames & Kent by 19 per cent.
- Dover, the UK's busiest ferry port, handled 12.8 million passengers in 2011. This was 3 per cent lower than the 2010 figure. Passenger numbers at Dover have fallen by 40 per cent since a peak of 21 million passengers in 1997.
- Dover to Calais is by far the busiest UK ferry route, handling 48 per cent of all UK international ferry passengers in 2011. However, the total passenger numbers of 10 million were down by one per cent compared to the 2010 passenger numbers. Sailings between Dover and Calais carried 66 per cent of all sea passenger traffic between the UK and France in 2011.
- After Dover the next busiest ports were Portsmouth (2.1 million passengers) and Holyhead (2.0 million passengers) where there were decreases of 7 and 3 per cent respectively on 2010.
- In 2011, 73 per cent of international ferry passengers sailed to or from French ports, 14 per cent to or from Irish ports and 8 per cent to or from ports in the Netherlands.
- *For comparison the Channel Tunnel carried 19.0 million passengers in 2011, 4 per cent higher than in 2010. The peak in Channel Tunnel traffic, 19.2 million passenger journeys, occurred in 1998.*

Figure 1: International sea and Channel Tunnel passengers: 1990-2011

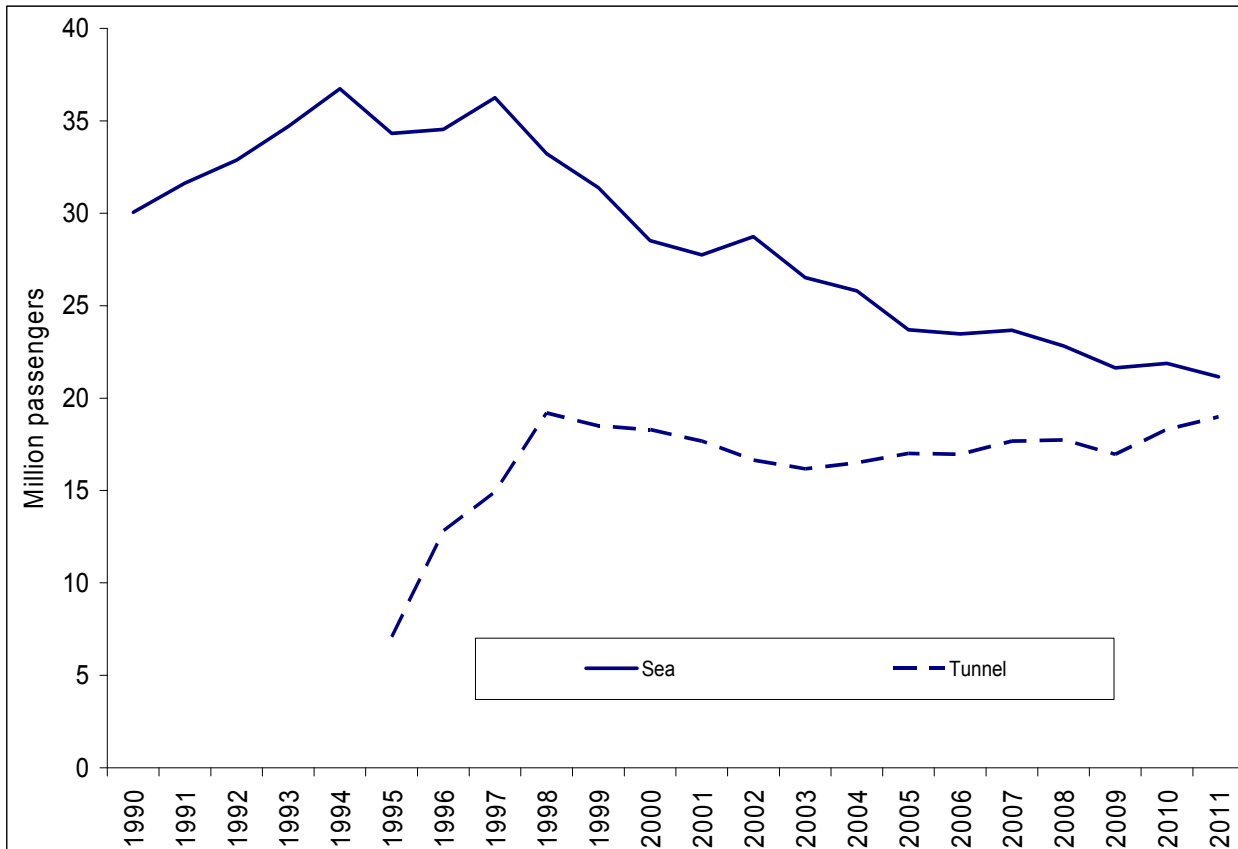
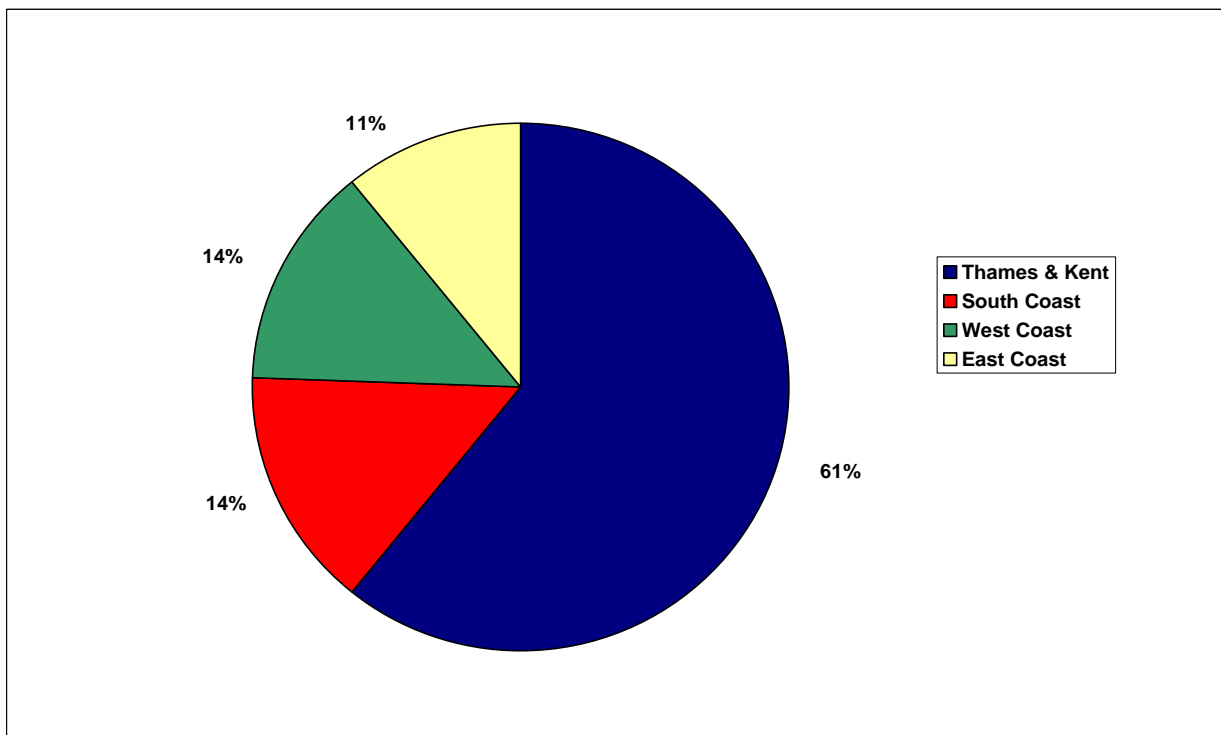


Figure 2: International ferry passengers sailing to or from UK ports by port group: 2011



2. Cruise and long sea journey passengers

- In 2010 (the latest year for which data is available) there were 1.6 million passengers on cruises beginning or ending at UK ports and 55 thousand passengers on other long sea journeys.
- Passenger numbers on cruise journeys rose by 16 per cent between 2009 and 2010. Cruise journeys have risen year on year since 1999.

3. Domestic passengers

- The busiest domestic routes are between Great Britain and Northern Ireland. Passenger numbers on these routes fell by 4 per cent to 2.1 million in 2011 compared with 2010.
- Passenger numbers between Great Britain and the Isle of Man increased by 0.4 per cent to 0.54 million between 2010 and 2011.
- Passenger numbers on the routes between Great Britain and the Channel Islands increased by 5 per cent to 0.37 million in 2011, compared with 2010.
- Passenger numbers on the sea crossings to Orkney and Shetland rose by 2 per cent to 0.40 million passengers between 2009 and 2010 (the latest year for which data are available).
- In 2010 (the latest year for which data are available) there were 0.28 million passengers on other sea crossings (Northern Ireland to Isle of Man, miscellaneous day cruises).
- On inter-island routes and river ferries there were 19.4 million and 19.6 million passengers respectively in 2010 (the latest year for which data are available).

4. Strengths and weaknesses of the data

- The data for international ferry passenger routes, domestic sea crossings and inter-island routes are collected regularly from the operators or, in the case of the crossings to Orkney and Shetland and Scottish inter-island routes, supplied by the Scottish Government. These data sets are checked in detail and considered to be very robust.
- Passenger numbers on river ferries are collected from the operators and cover major routes, which are reviewed periodically. Data are considered to be fit for purpose.
- The cruise and long sea data are also supplied by the operators and are regularly reviewed. The data are considered to be fit for purpose.

5. Background notes

1. The web tables for sea passenger statistics can be found at

http://www.dft.gov.uk/statistics?post_type=table&series=sea-passengers-parent-series

2. Full guidance on the methods used in the publication of these releases, and the quality of the data, can be found in the Technical Note at

<http://assets.dft.gov.uk/statistics/series/sea-passengers/spastechnote.pdf>

3. National Statistics are produced to high professional standards set out in the National Statistics Code of Practice. They undergo regular quality assurance reviews to ensure they meet customer needs.
4. Details of ministers and officials who receive pre-release access to these statistics up to 24 hours before release can be found at
<http://assets.dft.gov.uk/statistics/series/sea-passengers/ukseapasspre-release.pdf>
5. Provisional summary totals for international sea passenger traffic are released monthly via the DfT website at, refer to link in note (1) above
6. The 2011 figures for passengers on other domestic sea crossings, inter-island routes, river ferries and also long sea crossings and cruises will be updated in autumn 2012.