

# **Monthly Statistics of Building Materials and Components**

April 2012

No. 446

## NOTES

In tables where figures have been rounded to the nearest final digit, there may be an apparent slight discrepancy between the sum of the constituent items and the total as shown.

Symbols. The following symbols have been used throughout.

- |                       |                   |
|-----------------------|-------------------|
| .. = not available    | (P) = provisional |
| - = nil or negligible | (R) = revised     |

All figures are subject to revisions.

Unless otherwise stated, revisions are due to more complete information from late returns. If any figures are revised by 5% or more from the previously published value, an explanation will be provided.

The United Kingdom Statistics Authority has designated these statistics as National Statistics, in accordance with the Statistics and Registration Service Act 2007 and signifying compliance with the Code of Practice for Official Statistics.

Designation can be broadly interpreted to mean that the statistics:

- meet identified user needs;
- are well explained and readily accessible;
- are produced according to sound methods, and
- are managed impartially and objectively in the public interest.

Unless otherwise stated, the statistics published in this volume have been collected by the Office for National Statistics on behalf of the Department for Business, Innovation & Skills.

Lead Statistician: James Liley

For enquiries or further information about the contents of this publication please contact:

Construction Market Intelligence, 1 Victoria Street,  
London, SW1H 0ET;  
Telephone : 020 - 7215 - 6221  
E-mail : [materialstats@bis.gsi.gov.uk](mailto:materialstats@bis.gsi.gov.uk).

URN 12/313d

2 May 2012

## CONTENTS

	<u>Page</u>
Table 1 : Construction Material Price Indices	1
Table 2 : Price Indices of Construction Materials – monthly	2 & 3
Table 3 : Price Indices of Construction Materials – annual averages	4
Table 4 : Sales of Sand and Gravel in Great Britain	5
Table 5 : Sales of Sand and Gravel by English Regions, Wales and Scotland	6 & 7
Table 6 : Sales of Sand and Gravel by English and Welsh Counties and Scottish Regions	8 & 9
Table 7 : Slate : Production, Deliveries and Stocks	10
Chart 1 : Deliveries of Sand & Gravel and Ready-Mixed Concrete	11
Table 8 : Cement and Clinker : Production, Deliveries and Stocks	12
Chart 2 : Deliveries of Bricks, Concrete Building Blocks and Cement	13
Table 9 : Bricks : Production, Deliveries and Stocks for Great Britain	14 & 15
Table 10 : Bricks : Production, Deliveries and Stocks by English Regions, Wales and Scotland	16 to 19
Table 11 : Concrete Building Blocks : Production, Deliveries and Stocks for Great Britain	20 & 21
Table 12 : Concrete Building Blocks : Production, Deliveries and Stocks by English Regions, Wales and Scotland	22 & 23
Table 13 : Concrete Roofing Tiles and Ready-Mixed Concrete	24
Chart 3 : Comparison of Imports and Exports	25
Table 14 : Value of Overseas Trade in Selected Materials and Components for Constructional Use : Imports (cif) and Exports (fob)	26 to 35



Table 1: Construction Material Price Indices

United Kingdom	2005 = 100					
	2007	2008	2009	2010	2011	2012
<b>(a) New Housing</b>						
January	109.8	115.3	119.7	122.3	130.1	135.2 (P)
February	111.7	116.8	120.6	122.9	131.2	136.8 (P)
March	112.4	117.5	120.6	123.4	132.0	137.2 (P)
April	112.3	118.2	120.2	125.2	132.6	
May	113.7	119.0	119.8	127.2	133.4	
June	114.4	118.7	119.5	128.3	134.6	
July	115.2	120.0	119.1	129.0	135.0	
August	116.3	120.5	120.2	129.5	135.7	
September	116.3	120.4	121.0	129.9	135.6	
October	116.4	121.1	121.7	129.8	135.8	
November	116.0	120.4	122.6	130.2	135.6	
December	115.8	119.7	122.3	129.9	135.2	
Annual Average	114.2	119.0	120.6	127.3	133.9	
<b>(b) Other New Work</b>						
January	110.1	114.3	122.9	124.6	135.1	143.9 (P)
February	111.7	116.2	122.1	125.0	137.1	146.0 (P)
March	112.1	117.3	121.6	125.9	139.1	146.6 (P)
April	112.0	119.2	120.7	129.4	141.3	
May	112.9	121.6	120.7	132.0	142.5	
June	113.3	123.7	120.7	133.8	143.5	
July	113.9	126.4	120.7	133.1	143.4	
August	114.8	127.7	120.9	132.8	143.6	
September	114.4	128.6	121.8	132.9	143.5	
October	114.5	129.3	123.5	132.5	143.3	
November	114.0	126.6	125.3	132.3	143.0	
December	113.6	124.7	125.0	132.3	143.3	
Annual Average	113.1	123.0	122.2	130.6	141.6	
<b>(c) Repair and Maintenance</b>						
January	111.0	116.0	122.1	125.2	134.3	140.7 (P)
February	112.9	117.2	122.0	126.1	135.7	142.3 (P)
March	113.5	117.9	121.6	126.4	136.7	142.8 (P)
April	113.3	119.2	121.2	128.4	137.6	
May	114.4	120.4	121.0	131.0	138.5	
June	115.3	121.2	120.7	132.2	139.6	
July	116.0	122.9	120.6	132.9	140.4	
August	116.9	123.7	121.7	133.4	141.2	
September	117.2	123.8	122.8	133.7	140.9	
October	117.2	124.7	123.9	133.7	141.1	
November	116.6	123.5	125.2	134.2	140.9	
December	116.4	122.4	125.0	133.8	140.7	
Annual Average	115.1	121.1	122.3	130.9	139.0	
<b>(d) All Work</b>						
January	110.6	115.3	122.5	124.6	134.2	141.9 (P)
February	112.3	116.9	122.0	125.2	135.9	143.4 (P)
March	112.8	117.9	121.6	125.9	137.4	143.6 (P)
April	112.6	119.2	121.0	128.5	139.2	
May	113.8	121.0	120.9	131.0	140.2	
June	114.3	122.3	120.7	132.6	141.3	
July	114.7	124.4	120.6	132.4	141.5	
August	115.8	125.7	121.1	132.5	141.9	
September	116.0	126.2	122.1	132.5	141.7	
October	116.0	126.9	123.4	132.2	141.6	
November	115.5	125.0	124.9	132.4	141.3	
December	115.2	123.5	124.7	132.0	141.5	
Annual Average	114.1	122.0	122.1	130.2	139.8	

Note: These indices are weighted averages of Producer Price Indices. They do not include electrical or mechanical engineering materials.

Source ONS/BIS

# PRICES

**Table 2: Price Indices of Construction Materials**

United Kingdom

	2011							
	Mar	Apr	May	Jun	Jul	Aug	Sep	
<b>AGGREGATES</b>								
Crushed rock	- including levy	117.4	119.4	120.8	119.4	120.0	123.9	122.6
	- excluding levy	117.0	119.6	121.2	118.8	120.0	125.2	122.7
Sand & gravel	- including levy	120.5	120.5	119.9	120.8	122.1	121.6	122.7
	- excluding levy	119.6	119.7	120.9	120.1	121.7	121.2	122.4
Coated roadstone	- excluding levy	140.0	140.4	138.5	140.5	140.4	141.6	139.5
<b>CEMENT AND CONCRETE</b>								
Cement		135.0	134.7	134.9	135.7	135.5	135.7	135.6
Ready-mixed concrete		111.1	112.3	115.6	114.4	114.1	114.5	114.7
Pre-cast concrete products		121.2	121.0	121.0	121.3	121.7	121.1	120.8
	of which : Blocks, bricks, tiles & flagstones	125.7	125.3	125.4	125.6	126.3	125.4	125.0
Concrete reinforcing bars		165.2	167.6	167.1	170.2	171.0	173.1	174.4
<b>CLAY PRODUCTS</b>								
All Bricks		117.3	118.3	119.5	119.2	120.9	120.8	120.9
Ceramic tiles *		90.7	91.7	91.3	91.5	91.1	90.8	90.8
Ceramic sanitaryware *		137.3	148.9	148.9	148.9	148.9	148.5	148.8
<b>TIMBER AND JOINERY</b>								
Imported sawn or planed wood		152.8	152.5	153.2	153.7	155.7	156.1	156.1
Imported plywood		115.2	116.3	117.0	118.1	118.3	117.2	118.7
Sawn wood **		141.1	141.3	143.1	143.2	144.0	144.6	143.8
Particle Board **		128.2	129.2	131.4	133.7	137.3	137.0	137.5
Builders woodwork **		128.8	129.0	129.4	129.7	129.7	130.2	130.4
	of which : Doors & windows **	135.6	135.7	136.5	136.7	136.7	137.4	137.7
<b>METAL PRODUCTS</b>								
Fabricated structural steel		130.1	135.9	139.0	138.8	135.7	134.8	134.1
Doors & windows **		93.4	93.6	93.5	93.7	93.0	92.9	92.8
Central heating boilers *		117.2	117.2	117.2	117.5	117.6	117.6	118.1
Taps and Valves for sanitaryware *		164.3	166.7	169.6	170.7	173.8	172.7	170.1
<b>PLASTIC PRODUCTS</b>								
Pipes and fittings (rigid)		124.0	126.0	127.1	127.2	127.5	128.9	130.2
Pipes and fittings (flexible)		132.3	132.3	133.7	135.1	135.2	135.1	135.2
Sanitaryware		115.4	115.4	116.0	116.0	116.5	116.5	116.5
Doors & windows **		110.0	110.0	109.9	110.2	111.2	112.2	112.3
<b>OTHER BUILDING MATERIALS</b>								
Asphalt products *		174.6	172.5	179.1	179.6	181.6	179.9	180.4
Insulating materials (thermal or acoustic)		105.5	110.6	108.6	109.4	109.3	109.4	112.7
Paint (aqueous)		..	..	..	..	..	..	..
Paint (non-aqueous)		119.9	119.9	121.0	121.4	121.5	122.5	122.6
Lighting equipment for buildings *		105.4	105.4	105.4	..	..	..	..
Lighting equipment for roads		112.9	112.9	112.9	107.9	109.0	109.0	107.4
Electric water heaters *		143.3	141.4	141.5	141.5	142.2	142.6	145.2
Kitchen furniture		109.0	109.2	109.2	109.9	114.5	115.2	115.2

Notes : 1. Most of these indices, which are compiled by the Office for National Statistics, are a selection of producer price indices.

The complete list is available online at [www.statistics.gov.uk](http://www.statistics.gov.uk), by searching for the reference MM22.

\*The Office for National Statistics state that these Indices are based on relatively few quotes and in the long term should not be relied upon for contractual purposes.

\*\* These index values are considered less reliable mainly due to lack of market coverage.

# PRICES

2005=100

Oct	Nov	Dec	2012			Mar (P)		
			Jan	Feb (P)	Mar (P)			
								AGGREGATES
123.1	121.8	123.0 (P)	122.9 (P)	123.8	123.8	123.8	Crushed rock	- including levy
123.0	121.5	123.3 (P)	122.8 (P)	123.9	123.9	123.9		- excluding levy
123.8	123.4	123.4	128.4	128.1	128.1	128.1	Sand & gravel	- including levy
123.6	123.2	123.2	130.0	129.4	129.4	129.4		- excluding levy
139.6	140.0	141.0	152.4	152.3	152.5	152.5	Coated roadstone	- excluding levy
								CEMENT AND CONCRETE
135.8	136.0	136.2	140.8	141.3	142.0	142.0	Cement	
115.3	114.7	114.6	117.2	118.3	118.7	118.7	Ready-mixed concrete	
120.9	120.6	120.6	121.1	122.5	122.8	122.8	Pre-cast concrete products	
125.1	125.2	125.2	126.0	127.9	128.1	128.1	of which : Blocks, bricks, tiles & flagstones	
171.6	170.0	167.9	171.7 (P)	171.4	168.9	168.9	Concrete reinforcing bars	
								CLAY PRODUCTS
120.4	119.8	119.4	119.1	123.7	124.1	124.1	All Bricks	
90.7	90.7	90.7	89.2	89.5	89.5	89.5	Ceramic tiles *	
148.8	148.8	148.8	151.2	156.2	156.2	156.2	Ceramic sanitaryware *	
								TIMBER AND JOINERY
153.7	153.0	152.0	150.5	149.9	151.0	151.0	Imported sawn or planed wood	
118.1	118.9	117.0	116.9	116.6	119.2	119.2	Imported plywood	
142.5	141.2	141.5	141.0 (P)	141.0	140.6	140.6	Sawn wood **	
137.5	136.6	137.0	136.3	138.0	138.2	138.2	Particle Board **	
131.0	131.3	131.8	132.9	133.6	133.4	133.4	Builders woodwork **	
137.8	138.1	139.3	141.8	144.1	144.4	144.4	of which : Doors & windows **	
								METAL PRODUCTS
131.8	130.8	128.2	129.6 (P)	129.9	131.7	131.7	Fabricated structural steel	
98.2	102.4	102.7 (P)	102.6 (P)	102.8	102.4	102.4	Doors & windows **	
118.1	118.1	118.4	118.6	120.0	120.0	120.0	Central heating boilers *	
171.3	171.3	171.3	174.4	174.4	174.4	174.4	Taps and Valves for sanitaryware *	
								PLASTIC PRODUCTS
130.5	129.4	129.1	129.2	128.6	131.0	131.0	Pipes and fittings (rigid)	
135.2	135.4	135.4 (P)	136.2 (P)	136.3	136.3	136.3	Pipes and fittings (flexible)	
116.5	116.5	116.5 (P)	116.7 (P)	117.0	117.6	117.6	Sanitaryware	
112.3	112.2	112.3 (P)	112.4 (P)	112.3	112.4	112.4	Doors & windows **	
								OTHER BUILDING MATERIALS
181.9	..	..	..	..	..	..	Asphalt products *	
113.9	114.8	115.0	115.3	117.7	117.8	117.8	Insulating materials (thermal or acoustic)	
..	132.1	131.1	132.0	133.8	133.9	133.9	Paint (aqueous)	
122.6	125.9	125.9	127.8	130.3	130.0	130.0	Paint (non-aqueous)	
..	..	..	..	..	..	..	Lighting equipment for buildings *	
109.1	111.4	113.0	113.0	112.9	112.5	112.5	Lighting equipment for roads	
145.2	143.8	145.1	145.2	145.2	145.2	145.2	Electric water heaters *	
116.0	115.9	116.0	116.4	116.8	116.9	116.9	Kitchen furniture	

Source : ONS

Note: Due to the change from SIC03 to SIC07 the composition of the Aggregate, Wood and Coated Roadstone (excluding levy) Indices has been altered.

As such we will publish the Previous Indices alongside the Current Indices.

# PRICES

## Table 3: Price Indices of Construction Materials - Annual Averages

United Kingdom		2005=100					
		2006	2007	2008	2009	2010	2011
<b>AGGREGATES</b>							
Crushed rock	- including levy	..	..	..	110.0	115.5	121.0 (P)
	- excluding levy	..	..	..	103.1	110.8	121.0 (P)
Sand & gravel	- including levy	..	..	..	116.2	121.1	121.8
	- excluding levy	..	..	..	115.8	121.1	121.5
Coated roadstone	- including levy	108.2	113.8	130.0	140.8	..	..
	- excluding levy	107.5	113.7	129.7	140.4	..	140.0
Previous Index Crushed rock	- including levy	96.1	95.2	103.4	112.3	..	..
	- excluding levy	94.5	93.6	100.6	108.4	..	..
Previous Index Sand & Gravel	- including levy	105.3	109.9	117.5	112.0	..	..
	- excluding levy	105.7	110.9	116.3	107.5	..	..
<b>CEMENT AND CONCRETE</b>							
Cement		108.8	114.7	128.4	138.5	133.2	135.3
Ready-mixed concrete		107.7	106.7	113.4	110.8	110.5	113.8
Plasterboard etc		99.3	101.8	104.7	..	..	..
Pre-cast concrete products		102.3	110.6	114.4	118.7	117.4	120.9
	of which: Blocks, bricks, tiles & flagstones	103.3	112.8	115.4	121.1	121.0	125.2
Concrete re-inforcing bars		112.9	129.8	158.3	125.9	144.6	168.6
Fibre Cement Products		106.7	116.8	124.2	..	..	..
<b>CLAY PRODUCTS</b>							
All Bricks		104.3	111.1	109.0	117.2	118.8	119.3
Ceramic tiles		102.0	84.8	81.0	82.6	90.1	91.0
Ceramic sanitaryware		102.5	112.6	119.9	130.7	134.4	145.9
<b>TIMBER AND JOINERY</b>							
Imported sawn or planed wood		..	..	..	127.9	152.5	154.0
Imported plywood		..	..	..	110.2	119.0	116.9
Previous Index Imported Softwood		107.9	133.6	123.6	127.5	..	..
Previous Index Imported Plywood		100.8	106.5	120.7	124.1	..	..
Sawn Wood		103.1	122.0	127.8	118.7	135.1	141.7
Particle Board		102.6	112.7	113.8	111.4	117.3	133.0
Builders woodwork		102.2	108.0	113.6	119.7	125.5	129.8
	of which						
	Doors & windows	101.7	108.7	116.7	127.1	130.9	136.6
<b>METAL PRODUCTS</b>							
Fabricated structural steel		99.8	118.1	137.2	106.0	117.9	132.3
Doors & windows		101.2	87.5	87.0	89.8	91.2	95.2 (P)
Screws etc		106.1	105.9	106.6	..	..	..
Other builders' ironmongery		102.4	105.3	108.5	..	..	..
Central heating boilers		102.3	105.0	106.3	109.8	113.4	117.6
Central heating pumps		108.2	114.5	120.2	..	..	..
Taps & valves (domestic)		..	..	136.6	152.1	158.2	168.9
Metal sanitaryware		103.5	108.3	106.3	..	..	..
Copper pipes		168.1	163.2	154.1	..	..	..
<b>PLASTIC PRODUCTS</b>							
Pipes and fittings (rigid)		103.9	112.2	118.1	121.4	121.5	127.3
Pipes and fittings (flexible)		104.4	110.6	115.3	129.9	130.3	134.1 (P)
Sanitaryware		100.9	102.6	112.0	113.7	114.7	116.1 (P)
Doors & windows		101.3	103.5	106.2	107.9	108.1	110.8 (P)
Floor covering		107.8	109.8	..	..	..	..
<b>OTHER BUILDING MATERIALS</b>							
Asphalt products		120.6	132.2	140.4	151.4	162.1	..
Insulating materials (thermal or acoustic)		102.5	106.0	105.6	104.0	103.2	109.6
Paint (aqueous)		101.7	104.6	112.7	118.3	..	..
Paint (non-aqueous)		100.8	102.6	110.0	113.0	114.0	121.9
Lighting equipment for buildings		..	..	102.3	107.4	107.5	..
Lighting equipment for roads		98.7	100.9	105.2	112.3	110.6	110.7
Electric heating apparatus		101.8	105.4	112.0	..	..	..
Electric water heaters		111.6	119.8	122.3	132.6	136.7	142.5
Kitchen furniture		96.7	99.7	103.6	106.6	109.1	112.3

Source : ONS

Note 1: Due to the change from SIC03 to SIC07 the composition of the Aggregate and Wood Indices has been altered. As such we will publish the Previous Indices alongside the Current Indices.

Note 2: These indices, which are compiled by the Office for National Statistics, are a selection of producer price indices. The complete list is published monthly by the ONS in the Business Monitor MM22.



# MINING AND QUARRYING

**Table 4 : Sales of Sand and Gravel in Great Britain**

Great Britain		Thousand tonnes					
	<b>Sand</b>		<b>Gravel</b>	<b>Sand &amp; Gravel</b>	<b>Sand, Gravel &amp; Hoggin</b>	<b>Sand &amp; Gravel</b>	of which
	for Building	for Concreting	for Concreting & other uses	for Coating	for Fill	Total	<b>Marine-Dredged</b>
2001	13,926	33,675	36,799	2,596	10,460	97,456	13,611
2002	11,152	30,334	35,642	2,106	6,279	85,513	12,833
2003	11,474	31,349	31,725	1,493	6,498	82,539	12,249
2004	11,017	32,366	30,184	1,380	6,399	81,346	12,996
2005	12,419	30,704	30,648	1,569	5,173	80,513	13,025
2006	9,499	29,893	31,963	2,346	4,195	77,896	13,974
2007	8,649	29,803	31,114	1,695	4,254	75,515	13,777
2008	8,864	28,922	28,297	..	..	74,651	12,582
2009	7,270	21,582	..	..	..	58,482	9,589
2010	6,074	19,887	..	..	..	54,530	9,341
2011	6,041	23,489	..	..	..	57,062	11,169
2005 Q4	2,565	6,980	6,950	356	1,212	18,063	2,975
2006 Q1	2,189	7,100	7,058	523	919	17,789	2,927
Q2	2,582	8,126	9,032	623	1,174	21,537	4,531
Q3	2,603	7,725	8,602	640	1,144	20,714	3,498
Q4	2,125	6,942	7,271	560	958	17,856	3,018
2007 Q1	2,081	6,919	7,242	443	904	17,589	3,177
Q2	2,305	7,762	8,202	432	1,179	19,880	3,596
Q3	2,304	7,829	8,191	398	1,162	19,884	3,675
Q4	1,959	7,293	7,479	422	1,009	18,162	3,329
2008 Q1	2,151	7,156	7,286	379	1,180	18,152	3,035
Q2	2,385	7,724	7,668	456	2,041	20,274	3,541
Q3	2,279	7,644	7,091	..	..	19,341	3,337
Q4	2,049	6,398	6,252	490	1,695	16,884	2,669
2009 Q1	1,727	5,313	5,330	695	1,566	14,631	2,389
Q2	1,916	5,637	5,756	..	..	15,359	2,637
Q3	1,992	5,598	..	..	..	14,878	2,457
Q4	1,635	5,034	..	..	1,432	13,614	2,106
2010 Q1	1,539	4,952	..	..	..	13,711	2,131
Q2	1,585	4,983	..	..	..	13,940	2,444
Q3	1,584	5,268	..	..	..	14,112	2,592
Q4	1,366	4,684	..	..	..	12,767	2,174
2011 Q1	1,572	5,665	..	..	..	14,150	2,746
Q2	1,579	6,127	5,291	..	..	14,831	2,923
Q3	1,533	6,085	5,160	..	..	14,684	2,937
Q4	1,357	5,612	4,719	..	..	13,397	2,563

Note : The figures above are from a quarterly sample inquiry whereas those below are from the Annual Minerals Raised Inquiry, a census.

The two inquiries differ because some respondents are only able to provide estimated information for the quarterly inquiry.

1999	11,356	31,730	31,614	2,585	10,924	88,209	13,424
2000	11,758	31,167	31,797	2,461	12,051	89,234	14,356
2001	11,515	31,656	35,135	2,257	7,647	88,210	13,611
2002	11,190	31,224	32,434	2,031	5,842	82,721	12,832
2003	11,851	31,411	30,236	1,766	4,957	80,221	12,131
2004	10,688	32,529	32,346	2,437	8,058	86,057	12,996
2005	11,558	29,848	32,163	2,172	6,651	82,392	13,024
2006	9,907	29,815	31,002	2,648	6,869	80,242	13,974
2007	9,877	30,202	29,350	2,636	6,436	78,501	13,777
2008	8,527	26,885	23,388	2,222	11,106	72,127	12,621
2009	6,296	21,570	19,553	2,270	6,021	55,709	9,592
2010	6,110	20,947	18,540	2,112	6,621	54,330	9,341

# MINING AND QUARRYING

**Table 5 : Sales of Sand and Gravel by Standard region, Wales and Scotland**

	<b>Sand</b> for Building	<b>Sand</b> for Concreting	<b>Gravel</b> for Concreting & other uses	<b>Sand &amp; Gravel</b> for Coating	<b>Sand, Gravel &amp; Hoggin</b> for Fill	<b>Sand &amp; Gravel</b> Total	of which <b>Marine- Dredged</b>
<b>(a) Q4 2011</b>							
North East	30	..	147	..	57	..	81
Yorkshire & the Humber	108	315	293	..	94	..	..
North West	191	208	..	31	..	478	21
West Midlands	118	563	558	..	..	1,332	0
East Midlands	97	633	444	..	..	1,308	0
East of England	198	1,024	862	..	179	..	113
South East	246	1,454	1,501	40	255	3,496	2,056
South West	114	632	..	..	307	1,288	111
Wales	95	..	107	..	23	406	141
Scotland	160	484	589	115	208	1,556	0
Great Britain	1,357	5,612	4,719	..	..	13,397	2,563
of which marine-dredged	111	1,263	1,093	..	..	2,563	
<b>(b) Q4 2010</b>							
North East	17	..	..	..	46	..	..
Yorkshire & the Humber	95	291	260	526	..	..	..
North West	228	..	..	42	..	476	27
West Midlands	101	532	579	..	..	1,316	0
East Midlands	101	540	469	58	76	1,244	0
East of England	186	791	819	..	158	..	..
South East	194	1,136	1,413	50	225	3,018	1,686
South West	155	477	415	24	273	1,344	107
Wales	118	128	81	0	45	372	164
Scotland	171	479	427	113	133	1,323	0
Great Britain	1,366	4,684	..	..	..	12,767	2,174
of which marine-dredged	116	1,032	..	..	..	2,174	

Note : Regions refer to Government Office Regions

# MINING AND QUARRYING

Thousand tonnes

	<b>Sand</b>		<b>Gravel</b>	<b>Sand &amp; Gravel</b>	<b>Sand, Gravel &amp; Hoggin</b>	<b>Sand &amp; Gravel</b>	of which
	for Building	for Concreting	for Concreting & other uses	for Coating	for Fill	Total	<b>Marine-Dredged</b>
<b>(c) Annual 2011</b>							
North East	100	..	..	..	270	..	..
Yorkshire & the Humber	519	1,374	1,277	..	393	..	..
North West	754	..	..	123	..	1,940	96
West Midlands	505	2,458	2,358	..	..	5,695	0
East Midlands	443	2,594	1,962	..	..	5,673	0
East of England	950	4,184	3,586	..	786	..	..
South East	1,050	5,839	6,509	182	..	14,585	8,836
South West	555	2,779	..	..	..	5,795	502
Wales	428	..	..	..	..	1,671	740
Scotland	737	2,103	2,467	451	859	6,617	0
Great Britain	6,041	23,489	..	..	..	57,062	11,169
of which marine-dredged	514	5,418	..	..	..	11,169	
<b>(d) Annual 2010</b>							
North East	71	..	..	..	136	..	..
Yorkshire & the Humber	455	..	1,160	2,104	..	..	..
North West	873	..	..	167	..	1,956	97
West Midlands	..	2,136	2,624	..	..	5,704	0
East Midlands	438	2,380	2,106	236	259	5,419	0
East of England	871	3,180	3,571	..	674	..	..
South East	945	4,756	5,567	214	969	12,451	7,249
South West	538	2,072	..	..	1,132	5,697	453
Wales	548	..	..	..	175	1,730	732
Scotland	..	2,130	1,940	441	..	5,942	0
Great Britain	6,074	19,887	..	..	..	54,530	9,341
of which marine-dredged	534	4,300	..	..	..	9,341	

Note : Regions refer to Government Office Regions

# MINING AND QUARRYING

## Table 6 : Sales of Sand and Gravel by English & Welsh County and Scottish Region

Thousand tonnes

	2010		2011			
	Quarter 3	Quarter 4	Quarter 1	Quarter 2	Quarter 3	Quarter 4
<b>NORTH EAST</b>	..	366	465	..	..	..
Northumberland	253	236	261	236	189	201
Tyne and Wear *	..	28	..	..	..	..
Durham	..	..	..	..	..	..
Cleveland *	..	..	..	..	..	..
<b>YORKSHIRE &amp; THE HUMBER</b>	..	1,202	..	..	..	..
North Yorkshire	434	357	479	544	533	457
West Yorkshire	53	44	44	51	..	..
South Yorkshire	640	609	..	..	171	137
Humberside *	..	192	..	..	..	..
<b>NORTH WEST</b>	497	476	497	480	485	478
Cumbria	130	125	127	122	122	121
Lancashire	72	69	47	46	46	45
Merseyside *	28	27	26	25	24	21
Greater Manchester	66	63	71	68	71	70
Cheshire	201	192	226	219	222	221
<b>WEST MIDLANDS</b>	1,395	1,316	1,472	1,436	1,455	1,333
Shropshire	117	111	152	148	150	137
Staffordshire	971	917	914	897	913	833
West Midlands	..	56	..	..	..	..
Warwickshire	..	107	172	169	170	158
Hereford & Worcester	133	125	..	..	..	..
<b>EAST MIDLANDS</b>	1,452	1,244	1,370	1,511	1,484	1,308
Derbyshire	212	..	204	225	221	199
Nottinghamshire	449	387	365	401	394	346
Leicestershire	..	..	228	254	251	214
Northamptonshire	..	50	69	76	75	67
Lincolnshire	509	438	504	555	543	482
<b>EAST OF ENGLAND</b>	..	..	..	..	..	..
Cambridgeshire	551	488	528	559	553	520
Norfolk	386	337	336	349	346	323
Suffolk *	..	..	..	..	..	..
Essex *	..	..	..	..	..	..
Bedfordshire	..	..	..	..	..	..
Hertfordshire	..	..	..	..	..	..
<b>SOUTH EAST</b>	3,254	3,018	3,574	3,762	3,753	3,496
Buckinghamshire	104	116	93	109	113	112
Oxfordshire	80	89	73	74	83	..
Berkshire	176	203	206	217	219	218
Greater London *	908	..	947	1,051	1,081	1,004
Surrey	217	227	221	251	255	252
Kent *	836	714	976	978	981	916
Sussex East *	..	..	..	..	..	..
Sussex West *	164	144	..	..	213	..
Hampshire *	623	560	676	679	626	609
Isle of Wight	..	..	..	..	..	..

Note : Regions refer to Government Office Regions

\* Includes marine-dredged.

# MINING AND QUARRYING

Thousand tonnes

	2010		2011			
	Quarter 3	Quarter 4	Quarter 1	Quarter 2	Quarter 3	Quarter 4
<b>SOUTH WEST</b>	1,507	1,344	1,495	1,503	1,509	1,288
Gloucestershire	335	279	..	..	176	..
Wiltshire	226	200	161	163	165	142
Avon *	88	..	..	..	..	..
Somerset *	..	..	..	..	..	..
Dorset *	..	..	..	..	..	..
Devon *	..	157	..	..	..	..
Cornwall	243	..	428	423	436	367
<b>ENGLAND</b>	12,250	11,072	12,156	12,627	12,556	11,436
<b>WALES</b>	410	372	345	460	460	406
Clwyd	154	146	102	154	152	162
Gwynedd *	..	..	..	..	42	..
Powys	0	0	0	0	0	0
Dyfed *	82	..	..	..	..	..
Glamorgan West *	..	..	..	..	..	..
Glamorgan Mid	..	..	2	3	3	3
Glamorgan South *	32	..	..	..	..	..
Gwent *	..	..	..	..	..	..
<b>SCOTLAND</b>	1,452	1,323	1,649	1,744	1,668	1,556
South of Scotland	92	92	94	103	96	88
North East Scotland	201	175	285	303	302	278
Highlands	122	108	146	159	159	146
Island Areas	10	11	16	16	16	15
East Central Scotland	88	86	100	105	101	93
West Central Scotland	529	492	613	640	595	561
Tayside and Fife	410	359	395	418	399	375
<b>GREAT BRITAIN</b>	14,112	12,767	14,150	14,831	14,684	13,398

Note : Regions refer to Government Office Regions

\* Includes marine-dredged.

# MINING AND QUARRYING

## Table 7 : Slate - Production, Deliveries and Stocks

Great Britain

Tonnes

	Production			Deliveries			Stocks (a)			Deliveries
	Roofing (b)	Other (c)	Powder & Granules	Roofing (b)	Other (c)	Powder & Granules	Roofing (b)	Other (c)	Powder & Granules	Fill & Other Uses
2000	28,815	12,399	44,644	33,341	11,670	44,923	5,519	7,356	2,856	328,547
2001	30,770	14,834	47,521	33,052	13,586	47,588	3,159	8,465	2,799	383,353
2002	32,182	18,348	44,424	32,653	19,069	43,947	2,674	7,850	3,275	498,212
2003	34,471	15,623	29,003	34,700	14,576	29,240	2,477	8,849	3,416	669,818
2004	..	..	..	..	..	..	..	..	..	..
2005	..	..	..	..	..	..	2,824	10,281	5,347	..
2006	..	61,612	22,967	..	64,037	22,719	..	6,454	4,274	860,395
2007	..	65,260	19,141	..	62,646	19,431	2,563	2,521	3,746	..
2008	..	59,644	16,915	..	58,129	18,402	..	2,749	2,253	..
2009	..	33,759	9,150	22,555	34,322	10,637	2,420	2,186	766	615,346
2010	..	28,001	..	..	27,355	..	..	3,063	..	582,111
2011	..	30,665	..	..	30,437	..	..	3,245	..	662,003
2003 Q4	9,205	3,647	6,906	9,448	3,140	6,790	2,477	8,849	3,416	167,487
2004 Q1	9,397	4,432	7,288	8,379	4,619	7,460	3,469	8,777	3,242	158,552
Q2	9,031	3,596	8,083	10,135	3,499	7,328	2,365	8,874	3,997	154,407
Q3	..	8,029	7,544	..	8,578	7,049	3,954	8,225	4,592	158,333
Q4	..	..	..	..	..	..	..	..	..	..
2005 Q1	..	..	..	..	..	..	..	..	..	..
Q2	..	..	..	..	..	..	..	..	..	..
Q3	..	..	..	..	..	..	..	..	..	..
Q4	..	13,635	7,448	..	6,194	7,635	2,824	10,281	5,347	124,188
2006 Q1	..	11,594	6,575	..	12,879	6,406	3,170	8,967	5,440	195,762
Q2	..	14,804	5,051	..	14,983	5,257	3,079	7,424	3,990	223,696
Q3	..	16,170	5,194	..	16,803	5,094	..	6,792	4,090	251,314
Q4	..	19,044	6,147	..	19,372	5,962	..	6,454	4,274	189,623
2007 Q1	..	17,787	5,571	..	16,829	5,036	6,984	4,996	4,571	376,876
Q2	..	16,577	4,315	..	14,765	4,875	3,066	5,850	4,011	346,426
Q3	..	16,017	4,672	..	15,475	4,929	2,977	6,391	3,754	..
Q4	..	14,879	4,583	..	15,577	4,591	2,563	2,521	3,746	255,249
2008 Q1	..	18,608	4,282	..	18,071	4,414	..	3,059	3,594	246,495
Q2	..	15,465	4,738	..	14,457	4,862	..	3,801	3,484	..
Q3	..	13,811	3,843	..	13,841	5,511	3,851	2,749	1,816	..
Q4	..	11,760	4,052	..	11,760	3,615	..	2,749	2,253	..
2009 Q1	..	7,370	2,128	5,315	7,688	2,724	..	2,431	1,658	148,722
Q2	5,084	9,124	2,046	5,328	9,319	3,385	4,142	2,236	318	169,661
Q3	5,503	8,263	2,046	6,534	8,267	2,163	3,111	2,232	201	154,862
Q4	4,687	9,002	2,930	5,378	9,048	2,365	2,420	2,186	766	142,101
2010 Q1	..	6,772	..	..	6,662	..	..	2,296	..	88,805
Q2	..	7,517	..	..	7,388	..	2,049	3,284	683	175,098
Q3	..	7,335	..	..	7,184	..	1,326	3,332	281	159,574
Q4	4,907	6,377	..	4,909	6,121	..	..	3,063	..	158,634
2011 Q1	4,736	6,516	3,314	4,449	6,504	3,399	..	3,029	..	198,547
Q2	4,677	8,167	3,370	4,630	8,187	3,094	2,012	3,009	472	216,524
Q3	..	9,851	..	..	9,732	..	..	3,128	..	139,359
Q4	..	6,131	..	..	6,014	..	..	3,245	..	107,573

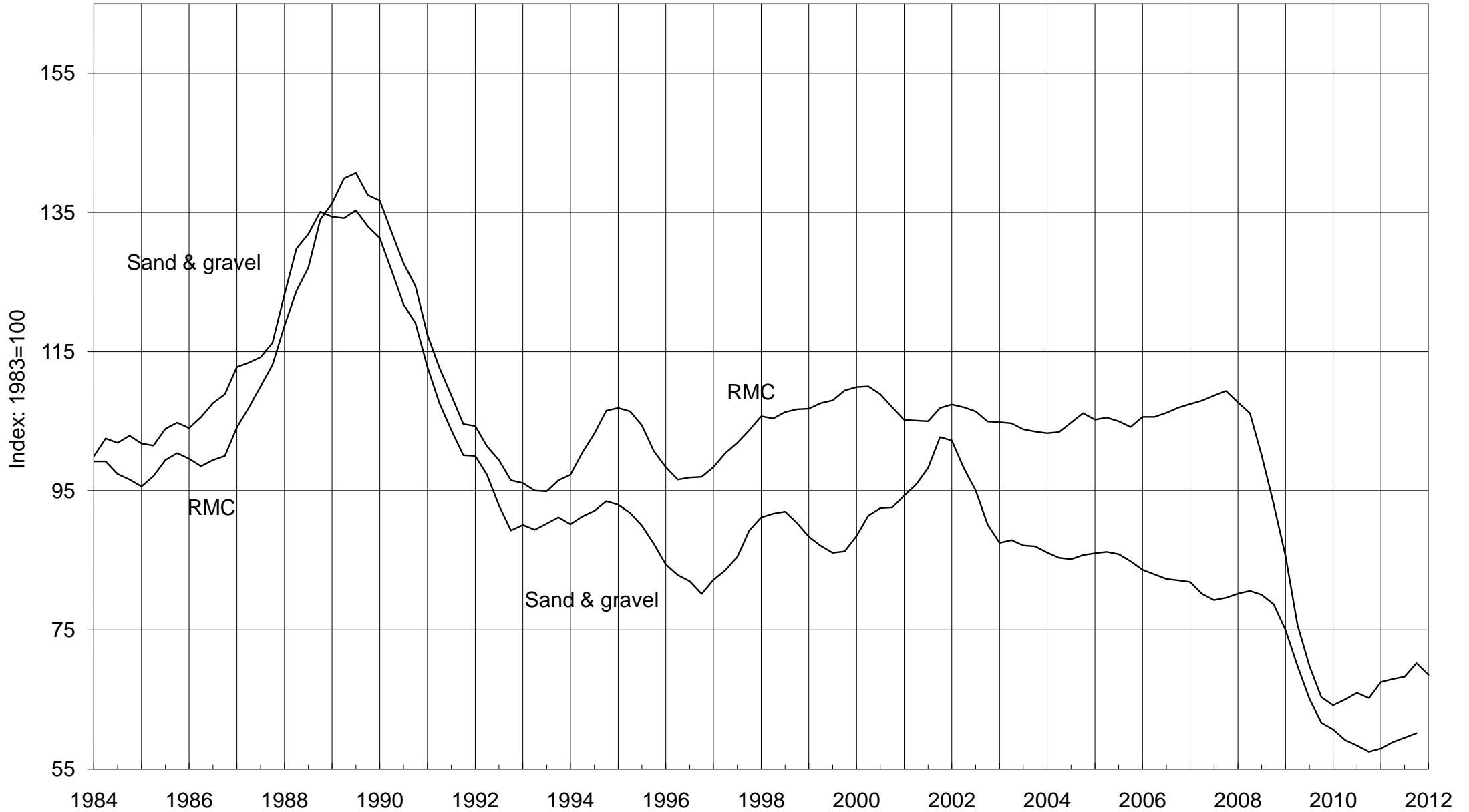
Note : 1) We have improved our sampling panel to include some new sites and have removed some non-pure slate sites. In line with the Code of Practice we have revised the data for Q2, Q3 and Q4 2010.

2) From Q1 1995, the coverage of 'powder & granules' has been extended to include non-quarry manufacture; and 'crude blocks' are included in 'other' manufacture slate.

- (a) Refers to stocks at the end of the period.
- (b) Consists of all slate tiles which could be used as roofing tiles.
- (c) Consists of all slate products for cladding and decorative uses

# Deliveries of Sand & Gravel and RMC

4-quarter moving average



The data is taken from Tables 4 & 13

**Table 8 : Cement & Clinker - Production, Deliveries and Stocks**

Great Britain

Thousand tonnes

		Cement						Clinker	
		Production		Deliveries	Imports (into GB)		Cementitious Material		Production
		of which	Exports	(into GB from	by	by	other	total	
		(from GB)	(from GB)	GB production)	'Manuf.	Others**			
2006		11,469	127	11,221	124	1,089	2,648	15,082	10,069
2007		11,887	74	11,638	255	1,121	2,769	15,783	10,227
2008		10,071	61	9,937	283	1,084	2,432	13,660	8,700
2009		7,623	21	7,474	99	1,085	1,680	10,338	6,421
2010		7,883	0	7,767	61	1,153	1,535	10,515	6,598
2011		8,529	0	8,318	86	1,173	1,736	11,312	7,096
2006	Q1	2,647	25	2,737	28	269	601	3,635	2,127
	Q2	2,981	30	2,895	32	268	692	3,887	2,622
	Q3	2,990	37	2,917	40	303	732	3,992	2,654
	Q4	2,851	35	2,672	24	249	623	3,568	2,666
2007	Q1	2,678	27	2,779	43	271	643	3,735	2,021
	Q2	3,188	22	3,061	59	297	701	4,117	2,812
	Q3	3,130	9	3,011	84	294	746	4,135	2,751
	Q4	2,891	16	2,787	69	259	681	3,796	2,643
2008	Q1	2,609	18	2,551	88	268	598	3,505	2,267
	Q2	2,803	18	2,816	94	327	682	3,917	2,366
	Q3	2,520	13	2,496	72	263	648	3,445	2,202
	Q4	2,139	12	2,074	29	226	505	2,793	1,865
2009	Q1	1,762	14	1,782	37	256	410	2,485	1,378
	Q2	2,004	1	1,970	21	279	451	2,721	1,587
	Q3	1,998	5	1,999	25	283	453	2,760	1,831
	Q4	1,859	1	1,723	17	268	366	2,373	1,624
2010	Q1	1,726	0	1,744	24	246	336	2,350	1,261
	Q2	2,157	0	2,154	8	345	416	2,923	1,745
	Q3	2,203	0	2,195	17	310	450	2,971	1,880
	Q4	1,796	0	1,674	12	252	332	2,270	1,713
2011	Q1	1,979	0	2,043	12	281	402	2,738	1,427
	Q2	2,245	0	2,165	25	319 (R)	448	2,956 (R)	1,791
	Q3	2,246	0	2,200	25	303 (R)	494	3,022 (R)	2,015
	Q4	2,059	0	1,909	24	270	392	2,595	1,863
2011	Feb	669	0	668	0	..	..	..	519
	Mar	789	0	805	8	..	..	..	541
	Apr	725	0	652	8	..	..	..	559
	May	737	0	744	8	..	..	..	633
	Jun	783	0	769	8	..	..	..	598
	Jul	789	0	727	8	..	..	..	658
	Aug	725	0	719	8	..	..	..	680
	Sep	732	0	754	8	..	..	..	676
	Oct	765	0	709	8	..	..	..	621
	Nov	720	0	722	8	..	..	..	615
	Dec	574	0	478	8	..	..	..	627
2012	Jan	513	0	563	4	..	..	..	320
	Feb	602	0	612	4	..	..	..	384

**NB** Where the coverage is for Great Britain, the figures for imports & exports are defined accordingly and have been estimated.

Cementitious material covers cement itself, fly as to EN 450 Part 1 where used as part of the cement in concrete (previously known as pulverised fuel ash (pfa) to BS 3892 Part 1) and ground granulated blast furnace slag (ggbs) to EN 15167 Part 1 (previously BS 6699)

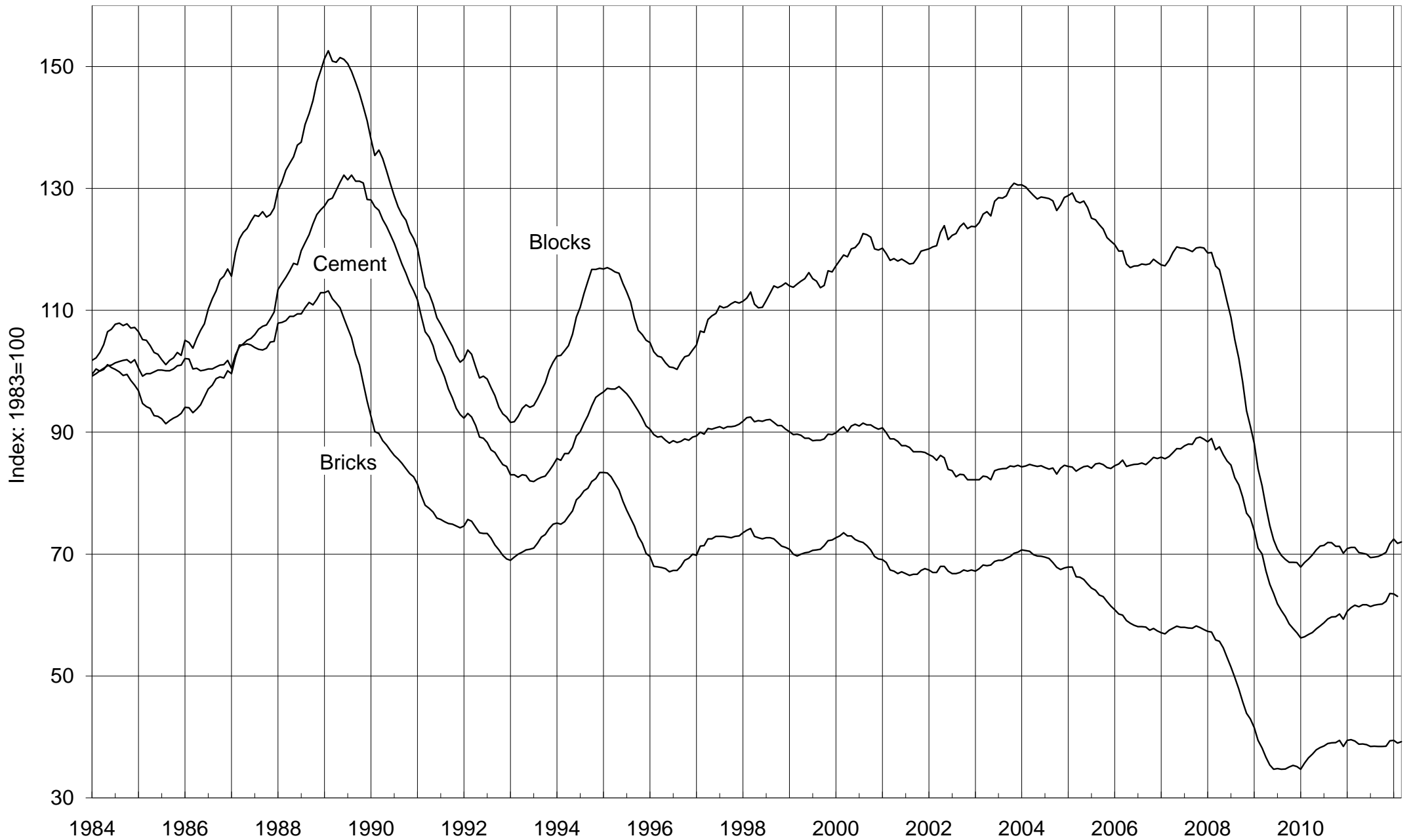
\* Refers to stocks at end of period

\*\* Estimated



# Deliveries of Bricks, Blocks & Cement

12-month moving totals



The data is taken from tables 8, 9 and 11

## BRICKS

Table 9 : Bricks - Production, Deliveries and Stocks

Great Britain

		Production	Deliveries (from)	Stocks*	Production	Deliveries (from)	Stocks*
<b>(a) Brick Type</b>		<u>All Types</u>			<u>Commons</u>		
2007		2,471	2,409	965	305	291	150
2008		1,929	1,796	1,105	246	242	151
2009		1,257	1,469	887	185	224	108
2010		1,430	1,606	702	182	194	94
2011		1,554	1,646	610	172	185	82
2011	Q1	372	397	674	45	44	95
	Q2	429	439	665	46	50	91
	Q3	394	444	615	43	50	84
	Q4	360	365	610	38	41	82
2012	Q1 (P)	369	391	589	31	45	68
2011	March	148	160	674	17	17	95
	April	139	132	681	14	15	93
	May	146	154	675	16	17	92
	June	144	153	665	16	18	91
	July	122	148	640	15	18	88
	August	129	146	624	15	15	88
	September	142	150	615	13	17	84
	October	144	142	617	15	16	83
	November	140	136	621	14	15	83
	December	76	86	610	8	9	82
2012	January	106	110	606	11	12	80
	February	127	111	622	11	11	80
	March (P)	136	170	589	9	21	68
<b>(b) Material Type</b>		<u>All Materials</u>			<u>Clay#</u>		
2007		2,471	2,409	965	2,312	2,249	947
2008		1,929	1,796	1,105	1,814	1,676	1,093
2009		1,257	1,469	887	..	..	..
2010		1,430	1,606	702	..	..	..
2011		1,554	1,646	610	..	..	..
2011	Q1	372	397	674	..	..	..
	Q2	429	439	665	..	..	..
	Q3	394	444	615	..	..	..
	Q4	360	365	610	..	..	..
2012	Q1 (P)	369	391	589	..	..	..
2011	March	148	160	674	..	..	..
	April	139	132	681	..	..	..
	May	146	154	675	..	..	..
	June	144	153	665	..	..	..
	July	122	148	640	..	..	..
	August	129	146	624	..	..	..
	September	142	150	615	..	..	..
	October	144	142	617	..	..	..
	November	140	136	621	..	..	..
	December	76	86	610	..	..	..
2012	January	106	110	606	..	..	..
	February	127	111	622	..	..	..
	March (P)	136	170	589	..	..	..

\* Refers to stocks at end of period

#Sand-lime bricks are included with clay bricks

Millions

Production	Deliveries (from)	Stocks*	Production	Deliveries (from)	Stocks*	(a) Brick Type	
Facings			Engineering				
1,950	1,906	753	216	212	62	2007	
1,514	1,386	895	170	168	58	2008	
973	1,135	732	99	109	48	2009	
1,124	1,280	570	124	132	39	2010	
1,230	1,304	494	152	157	34	2011	
290	315	542	36	38	37	2011 Q1	
340	346	538	43	43	36	Q2	
312	352	498	39	42	33	Q3	
288	291	494	34	33	34	Q4	
298	310	483	40	36	38	2012 Q1 (P)	
116	127	542	14	16	37	2011 March	
110	104	549	14	13	39	April	
117	122	547	12	15	36	May	
112	121	538	16	15	36	June	
96	115	520	11	15	33	July	
102	118	504	13	13	32	August	
114	119	498	14	14	33	September	
116	113	501	13	13	33	October	
110	109	502	15	12	36	November	
62	69	494	6	8	34	December	
82	89	488	13	9	38	2012 January	
103	88	503	13	12	39	February	
113	133	483	14	15	38	March (P)	
Sand-Lime#			Concrete			(b) Material Type	
..	..	..	159	160	18	2007	
..	..	..	115	120	11	2008	
..	..	..	..	..	..	2009	
..	..	..	..	..	..	2010	
..	..	..	..	..	..	2011	
..	..	..	..	..	..	2011 Q1	
..	..	..	..	..	..	Q2	
..	..	..	..	..	..	Q3	
..	..	..	..	..	..	Q4	
..	..	..	..	..	..	2012 Q1 (P)	
..	..	..	..	..	..	2011 March	
..	..	..	..	..	..	April	
..	..	..	..	..	..	May	
..	..	..	..	..	..	June	
..	..	..	..	..	..	July	
..	..	..	..	..	..	August	
..	..	..	..	..	..	September	
..	..	..	..	..	..	October	
..	..	..	..	..	..	November	
..	..	..	..	..	..	December	
..	..	..	..	..	..	2012 January	
..	..	..	..	..	..	February	
..	..	..	..	..	..	March (P)	

Note: Data covering January 2009 to February 2011 were revised in the December 2011 edition of this bulletin. These data are included in this table. For more information on revisions, see the Pre-announcements and Summary of Revisions to 'Monthly Statistics of Building Materials and Components' Publication document on our website.

## BRICKS

Table 10 : Brick Production, Deliveries and Stocks by English region, Wales and Scotland

	North East	Yorks & Humber	North West	West Midlands	East Midlands	East of England
				#		#
<b>(a) Commons</b>						
Production						
2011	..	..	..	..	45,755	..
2011 Q1	..	..	2,135	..	13,206	..
Q2	..	640	2,803	2,110	12,651	..
Q3	..	788	..	..	10,091	..
Q4	..	..	1,463	..	9,807	..
2012 February	..	..	536	1,083	4,101	..
Deliveries (from)						
2011	..	3,751	8,748	..	45,046	..
2011 Q1	..	1,010	2,105	..	11,259	..
Q2	..	866	2,398	4,066	10,944	..
Q3	..	1,106	2,776	3,063	12,589	..
Q4	..	769	1,469	3,324	10,254	..
2012 February	417	..	445	882	2,997	..
Stocks *						
2011	3,157	1,617	3,734	5,180	14,090	..
2011 Q1	2,817	2,374	4,792	7,843	14,850	..
Q2	2,826	2,220	5,197	5,887	16,542	..
Q3	3,064	1,936	3,740	5,394	14,320	..
Q4	3,157	1,617	3,734	5,180	14,090	..
2012 February	4,215	1,254	3,665	4,997	15,478	..
<b>(b) Facings</b>						
Production						
2011	..	69,886	..	293,282	322,710	..
2011 Q1	..	16,383	18,862	59,778	87,666	..
Q2	..	18,316	19,419	83,907	87,569	..
Q3	..	18,150	18,077	77,463	78,715	..
Q4	..	17,037	..	72,134	68,760	..
2012 February	..	5,714	..	29,293	27,435	958
Deliveries (from)						
2011	..	73,581	81,200	300,877	345,549	..
2011 Q1	..	20,178	21,509	74,021	78,620	..
Q2	..	19,569	22,360	80,236	87,798	..
Q3	..	20,038	20,996	81,401	95,772	..
Q4	..	13,796	16,335	65,219	83,359	..
2012 February	..	5,098	5,204	20,750	24,587	..
Stocks *						
2011	..	20,542	37,334	96,678	..	..
2011 Q1	31,397	19,672	40,872	90,832	176,024	..
Q2	..	19,205	37,931	94,503	..	..
Q3	..	17,337	35,012	90,565	..	..
Q4	..	20,542	37,334	96,678	..	..
2012 February	..	21,128	38,095	106,196	..	..
<b>(c) Engineering #</b>						
Production						
2011	..	..	..	95,916	..	..
2011 Q1	..	..	..	23,475	..	..
Q2	..	..	..	26,750	..	..
Q3	..	..	..	23,378	..	..
Q4	..	..	..	22,313	..	..
2012 February	..	..	..	7,933	..	..
Deliveries (from)						
2011	..	..	21,118	95,673	..	..
2011 Q1	..	..	5,417	23,992	..	..
Q2	..	..	6,347	26,623	..	..
Q3	..	..	6,013	25,510	..	..
Q4	..	..	3,341	19,548	..	..
2012 February	..	..	1,721	5,546	..	..
Stocks *						
2011	..	..	3,957	10,453	..	..
2011 Q1	..	..	3,497	9,723	..	..
Q2	..	..	4,240	9,850	..	..
Q3	..	..	4,954	7,718	..	..
Q4	..	..	3,957	10,453	..	..
2012 February	..	..	4,363	14,973	..	..

Note : Regions now use Government Office boundaries

\* Refers to stocks at end of period.

South East	South West	England	Wales	Scotland	Great Britain	
#	#					
..	..	..	..	..	172,431	<b>(a) Commons</b>
..	..	..	..	..	45,217	Production
..	..	..	..	..	46,233	2011
..	..	..	..	..	42,985	2011 Q1
..	..	..	..	..	37,996	Q2
..	..	..	..	..	10,843	Q3
..	..	..	..	..	..	Q4
..	..	..	..	..	..	2012 February
..	..	..	..	..	184,807	Deliveries (from)
..	..	..	..	..	44,120	2011
..	..	..	..	..	50,152	2011 Q1
..	..	..	..	..	49,801	Q2
..	..	..	..	..	40,734	Q3
..	..	..	..	..	11,061	Q4
..	..	..	..	..	..	2012 February
..	1,345	..	..	..	81,597	Stocks *
..	1,831	..	..	..	94,590	2011
..	1,735	..	..	..	90,588	2011 Q1
..	1,706	..	..	..	84,082	Q2
..	1,345	..	..	..	81,597	Q3
..	1,752	..	..	..	80,257	Q4
..	..	..	..	..	..	2012 February
..	..	..	..	..	1,229,534	<b>(b) Facings</b>
..	..	..	..	..	290,018	Production
62,893	..	..	..	4,957	339,630	2011
51,250	..	..	..	4,452	312,120	2011 Q1
50,318	..	..	..	..	287,766	Q2
17,601	..	..	..	..	102,915	Q3
..	..	..	..	..	..	Q4
..	..	..	..	..	..	2012 February
239,115	..	..	..	..	1,304,050	Deliveries (from)
55,721	..	..	..	3,830	315,087	2011
62,635	..	..	..	5,193	345,933	2011 Q1
65,099	..	..	..	4,300	352,226	Q2
55,660	..	..	..	..	290,804	Q3
15,390	..	..	..	..	87,791	Q4
..	..	..	..	..	..	2012 February
53,299	..	..	..	..	494,279	Stocks *
..	19,569	..	..	7,552	542,042	2011
..	..	..	..	7,316	538,290	2011 Q1
58,641	..	..	..	7,468	498,143	Q2
53,299	..	..	..	..	494,279	Q3
55,521	..	..	..	..	502,971	Q4
..	..	..	..	..	..	2012 February
..	..	..	..	..	152,305	<b>(c) Engineering #</b>
..	..	..	..	..	36,475	Production
..	..	..	0	..	42,931	2011
..	..	..	..	..	38,592	2011 Q1
..	..	..	..	..	34,307	Q2
..	..	..	..	..	13,403	Q3
..	..	..	..	..	..	Q4
..	..	..	..	..	..	2012 February
..	..	..	..	..	156,873	Deliveries (from)
..	..	..	..	..	38,231	2011
..	..	..	..	..	43,379	2011 Q1
..	..	..	..	..	42,176	Q2
..	..	..	..	..	33,087	Q3
..	..	..	..	..	11,687	Q4
..	..	..	..	..	..	2012 February
..	..	..	..	..	34,063	Stocks *
..	..	..	..	..	36,905	2011
..	..	..	..	..	36,457	2011 Q1
..	..	..	..	..	32,873	Q2
..	..	..	..	..	34,063	Q3
..	..	..	..	..	39,235	Q4
..	..	..	..	..	..	2012 February

Note: Data covering January 2009 to February 2011 were revised in the December 2011 edition of this bulletin. These data are included in this table. For more information on revisions, see the Pre-announcements and Summary of Revisions to 'Monthly Statistics of Building Materials and Components' Publication document on our website.

## BRICKS

Table 10 (cont'd) : Brick Production, Deliveries and Stocks by English region, Wales and Scotland

	North East	Yorks & Humber	North West	West Midlands	East Midlands	East of England
<b>(d) All Bricks</b>						
Production						
2010	..	..	..	..	..	..
2011	..	..	..	..	..	..
2010 Q4	..	..	..	..	86,300	..
2011 Q1	..	..	..	..	..	..
Q2	..	..	..	110,768	..	..
Q3	..	..	..	..	..	..
Q4	..	..	..	..	..	..
2011 February	..	..	8,160	31,053	..	..
March	..	..	..	..	38,393	..
April	..	..	..	35,901	..	..
May	..	..	..	39,761	..	..
June	..	..	..	35,106	33,657	..
July	..	..	..	29,968	..	..
August	..	..	..	..	31,179	..
September	..	..	..	39,033	..	..
October	..	..	..	40,559	..	..
November	..	..	..	..	31,026	..
December	..	..	..	..	20,101	..
2012 January	..	..	..	29,794	23,768	..
February	..	..	..	37,656	..	..
Deliveries (from)						
2010	..	..	..	..	..	..
2011	..	..	111,066	..	..	..
2010 Q4	..	..	..	..	..	..
2011 Q1	..	..	29,031	..	..	..
Q2	..	..	31,105	109,390	..	..
Q3	..	..	29,785	108,643	..	..
Q4	..	..	21,145	87,173	..	..
2011 February	..	..	8,948	..	..	..
March	..	..	11,079	..	..	..
April	..	..	8,864	33,132	..	..
May	..	..	11,050	39,708	..	..
June	..	..	11,191	36,550	..	..
July	..	..	10,523	35,555	..	..
August	..	..	9,167	36,478	..	..
September	..	..	10,095	36,610	..	..
October	..	..	7,922	34,495	..	..
November	..	..	8,214	31,853	..	..
December	..	..	5,009	20,825	..	..
2012 January	..	..	6,588	26,769	..	..
February	..	..	7,370	26,839	..	..
Stocks *						
2010	..	..	53,085	124,662	..	..
2011	..	..	45,025	111,327	..	..
2010 Q4	..	..	53,085	124,662	..	..
2011 Q1	..	..	49,161	108,102	..	..
Q2	..	..	47,368	109,480	..	..
Q3	..	..	43,706	102,855	..	..
Q4	..	..	45,025	111,327	..	..
2011 February	..	..	..	115,052	..	..
March	..	..	49,161	108,102	..	..
April	..	..	50,278	110,871	..	..
May	..	..	48,947	110,924	..	..
June	..	..	47,368	109,480	..	..
July	..	..	45,161	103,893	..	..
August	..	..	44,414	100,432	..	..
September	..	..	43,706	102,855	..	..
October	..	..	45,581	108,889	..	..
November	..	..	47,037	113,999	..	..
December	..	..	45,025	111,327	..	..
2012 January	..	..	43,883	114,352	..	..
February	..	..	46,123	125,169	..	..

Note : Regions now use Government Office boundaries

\* Refers to stocks at end of period.

## BRICKS

Thousands

South East	South West	England	Wales	Scotland	Great Britain	
						<b>(d) All Bricks</b>
						Production
..	..	..	..	..	1,429,605	2010
..	..	..	..	..	1,554,270	2011
..	..	..	..	..	340,514	2010 Q4
..	..	..	..	..	371,710	2011 Q1
..	..	..	..	..	428,794	Q2
..	..	..	..	..	393,697	Q3
..	..	..	..	..	360,069	Q4
..	..	..	..	..	126,633	2011 February
..	..	..	..	..	147,503	March
..	..	..	..	..	138,961	April
..	..	..	..	..	145,912	May
..	..	..	..	..	143,921	June
..	..	..	..	..	122,429	July
..	..	..	..	..	129,415	August
..	..	..	..	..	141,853	September
..	..	..	..	..	144,166	October
..	..	..	..	..	139,534	November
..	..	..	..	..	76,369	December
..	..	..	..	..	106,407	2012 January
..	..	..	..	..	127,161	February
						Deliveries (from)
..	..	..	..	..	1,605,991	2010
..	..	..	..	..	1,645,730	2011
..	..	..	..	..	324,953	2010 Q4
..	..	..	..	..	397,438	2011 Q1
..	..	..	..	..	439,464	Q2
..	..	..	..	..	444,203	Q3
..	..	..	..	..	364,625	Q4
..	..	..	..	..	128,984	2011 February
..	..	..	..	..	160,354	March
..	..	..	..	..	131,689	April
..	..	..	..	..	154,439	May
..	..	..	..	..	153,336	June
..	..	..	..	..	147,916	July
..	..	..	..	..	145,930	August
..	..	..	..	..	150,357	September
..	..	..	..	..	141,993	October
..	..	..	..	..	136,372	November
..	..	..	..	..	86,260	December
..	..	..	..	..	110,447	2012 January
..	..	..	..	..	110,539	February
						Stocks *
..	..	..	..	..	702,073	2010
..	..	..	..	..	609,939	2011
..	..	..	..	..	702,073	2010 Q4
..	..	..	..	..	673,537	2011 Q1
..	..	..	..	..	665,335	Q2
..	..	..	..	..	615,098	Q3
..	..	..	..	..	609,939	Q4
..	..	..	..	..	687,289	2011 February
..	..	..	..	..	673,537	March
..	..	..	..	..	680,681	April
..	..	..	..	..	674,750	May
..	..	..	..	..	665,335	June
..	..	..	..	..	640,178	July
..	..	..	..	..	623,602	August
..	..	..	..	..	615,098	September
..	..	..	..	..	617,241	October
..	..	..	..	..	620,620	November
..	..	..	..	..	609,939	December
..	..	..	..	..	605,861	2012 January
..	..	..	..	..	622,463	February

Note: Data covering January 2009 to February 2011 were revised in the December 2011 edition of this bulletin. These data are included in this table. For more information on revisions, see the Pre-announcements and Summary of Revisions to 'Monthly Statistics of Building Materials and Components' Publication document on our website.

# CONCRETE PRODUCTS

**Table 11 : Concrete Blocks - Production, Deliveries and Stocks**

Great Britain

	All Types			Dense		
	Production	Deliveries (from)	Stocks*	Production	Deliveries (from)	Stocks*
2001	87,922	88,509	8,842	36,598	36,518	4,258
2002	91,474	91,342	9,014	35,744	36,019	3,963
2003	95,675	96,383	8,513	36,775	37,175	3,684
2004	96,256	94,854	10,088	37,677	37,444	3,690
2005	89,997	89,551	9,680	36,188	36,473	3,465
2006	87,510	87,015	..	34,956	34,741	..
2007	89,951	88,746	..	36,686	35,396	..
2008	67,743	67,136	8,920	29,675	29,889	3,498
2009	50,394	50,639	8,320	22,607	22,748	3,291
2010	53,629	51,758	10,152	22,393	21,731	3,833
2011	54,648	52,896	11,561	23,006	22,096	4,793
2006 Q4	21,305	20,023	..	8,133	8,079	..
2007 Q1	22,014	21,057	..	8,714	8,141	..
Q2	22,532	24,033	..	9,268	9,531	..
Q3	23,248	23,184	..	9,727	9,283	..
Q4	22,157	20,472	..	8,978	8,442	..
2008 Q1	21,131	18,855	11,749	8,564	7,853	5,075
Q2	20,231	19,714	11,977	8,767	8,677	5,107
Q3	14,894	16,309	10,224	7,131	7,576	4,479
Q4	11,487	12,259	8,920	5,214	5,783	3,498
2009 Q1	12,094	11,649	9,161	5,635	5,438	3,628
Q2	13,463	13,191	9,455	6,192	6,032	3,821
Q3	12,771	13,924	8,203	5,811	6,255	3,390
Q4	12,066	11,874	8,320	4,969	5,023	3,291
2010 Q1	12,614	12,072	8,740	5,033	4,896	3,333
Q2	14,956	14,753	8,990	6,343	6,176	3,513
Q3	15,172	14,343	9,832	6,477	6,125	3,837
Q4	10,887	10,590	10,152	4,541	4,534	3,833
2011 Q1	13,982	12,795	11,516	5,642	5,278	4,197
Q2	14,761	13,911	12,510	6,217	5,871	4,647
Q3	14,208	14,076	12,352	6,217	5,931	4,862
Q4	11,698	12,115	11,561	4,930	5,016	4,793
2010 March	4,931	4,969	8,740	2,063	2,039	3,333
April	4,814	4,948	..	1,975	1,970	..
May	4,790	4,765	..	1,974	1,969	..
June	5,353	5,040	8,990	2,394	2,237	3,513
July	5,266	4,970	..	2,248	2,169	..
August	4,711	4,614	..	2,158	1,962	..
September	5,195	4,759	9,832	2,070	1,993	3,837
October	4,295	4,372	..	1,739	1,824	..
November	3,999	4,092	..	1,595	1,710	..
December	2,593	2,126	10,152	1,207	1,001	3,833
January	3,924	3,591	..	1,657	1,539	..
February	4,664	4,220	..	1,853	1,694	..
March	5,394	4,984	11,516	2,133	2,045	4,197
April	4,415	4,308	..	1,867	1,811	..
May	5,037	4,690	..	2,119	2,019	..
June	5,309	4,912	12,510	2,231	2,041	4,647
July	4,805	4,574	..	2,088	1,935	..
August	4,413	4,675	..	2,073	1,987	..
September	4,990	4,826	12,352	2,056	2,009	4,862
October	4,497	4,584	..	1,844	1,906	..
November	4,227	4,376	..	1,759	1,797	..
December	2,974	3,155	11,561	1,327	1,314	4,793
January (P) **	4,347	4,187	..	1,906	1,813	..
February (P) **	4,423	3,695	..	1,849	1,605	..
March (P) **	4,875	5,139	..	1,791	2,041	..

\* Refers to stocks at end of period

\*\* Missing returns have been estimated using an improved methodology. For more details, see the 'pre-announcement of any major changes to samples or methodology' at: <http://www.bis.gov.uk/analysis/statistics/construction-statistics/building-materials>



# CONCRETE PRODUCTS

Thousand square metres

Lightweight			Aerated			
Production	Deliveries (from)	Stocks*	Production	Deliveries (from)	Stocks*	
22,684	22,670	2,207	28,639	29,320	2,377	2001
23,478	23,537	2,188	32,252	31,786	2,863	2002
24,991	25,161	2,107	33,909	34,047	2,721	2003
25,462	25,736	2,271	33,117	31,674	4,127	2004
25,561	25,673	2,173	28,248	27,405	4,042	2005
25,345	25,222	..	27,209	27,051	..	2006
25,965	25,667	..	27,300	27,682	..	2007
18,168	18,363	2,149	19,900	18,884	3,273	2008
13,421	13,989	1,522	14,367	13,903	3,507	2009
14,415	13,923	2,044	16,822	16,104	4,276	2010
15,153	14,822	2,172	16,490	15,978	4,596	2011
6,258	5,920	..	6,914	6,024	..	2006 Q4
6,418	6,437	..	6,883	6,479	..	2007 Q1
6,572	6,867	..	6,692	7,636	..	Q2
6,757	6,616	..	6,764	7,286	..	Q3
6,217	5,748	..	6,962	6,282	..	Q4
5,580	5,389	2,633	6,988	5,612	4,041	2008 Q1
5,421	5,405	2,549	6,043	5,632	4,321	Q2
4,110	4,309	2,338	3,653	4,424	3,406	Q3
3,057	3,260	2,149	3,216	3,216	3,273	Q4
3,213	3,258	2,181	3,247	2,953	3,352	2009 Q1
3,498	3,553	2,125	3,773	3,607	3,510	Q2
3,293	3,765	1,544	3,667	3,903	3,269	Q3
3,416	3,412	1,522	3,681	3,439	3,507	Q4
3,344	3,252	1,601	4,238	3,924	3,806	2010 Q1
4,031	3,950	1,692	4,582	4,627	3,785	Q2
4,208	3,899	2,023	4,487	4,319	3,971	Q3
2,832	2,822	2,044	3,515	3,234	4,276	Q4
3,916	3,665	2,301	4,423	3,852	5,017	2011 Q1
4,008	3,827	2,507	4,537	4,212	5,357	Q2
3,908	3,970	2,218	4,083	4,175	5,272	Q3
3,321	3,360	2,172	3,447	3,739	4,596	Q4
1,330	1,357	1,601	1,538	1,573	3,806	2010 March
1,298	1,288	..	1,541	1,689	..	April
1,305	1,264	..	1,511	1,532	..	May
1,428	1,398	1,692	1,530	1,405	3,785	June
1,474	1,354	..	1,543	1,447	..	July
1,286	1,289	..	1,267	1,363	..	August
1,447	1,256	2,023	1,677	1,510	3,971	September
1,211	1,201	..	1,345	1,347	..	October
1,068	1,122	..	1,336	1,260	..	November
553	498	2,044	834	627	4,276	December
939	1,021	..	1,328	1,031	..	January
1,346	1,196	..	1,466	1,330	..	February
1,632	1,448	2,301	1,629	1,491	5,017	March
1,188	1,201	..	1,361	1,296	..	April
1,401	1,316	..	1,517	1,355	..	May
1,420	1,311	2,507	1,658	1,561	5,357	June
1,335	1,291	..	1,383	1,348	..	July
1,306	1,327	..	1,034	1,361	..	August
1,267	1,352	2,218	1,666	1,466	5,272	September
1,166	1,265	..	1,487	1,414	..	October
1,386	1,271	..	1,082	1,308	..	November
769	824	2,172	878	1,017	4,596	December
1,244	1,076	..	1,197	1,298	..	January (P) **
1,169	1,005	..	1,405	1,086	..	February (P) **
1,409	1,393	..	1,676	1,705	..	March (P) **

# CONCRETE PRODUCTS

**Table 12 : Concrete Blocks : Production, Deliveries and Stocks by English Region, Wales and Scotland**

	North East	Yorks & Humber	North West	West Midlands	East Midlands	East of England
<b>(a) Dense aggregate</b>						
Production						
2011	..	..	2,604	..	..	..
2010 Q4	81	..	553	..	..	..
2011 Q1	111	..	701	..	..	..
Q2	115	..	699	..	..	..
Q3	..	..	723	..	..	..
Q4	74	..	482	..	..	..
Deliveries (from)						
2011	408	..	2,597	..	..	..
2010 Q4	73	..	575	..	..	..
2011 Q1	105	..	665	..	..	..
Q2	117	..	707	..	..	..
Q3	109	..	706	..	..	..
Q4	78	..	519	..	..	..
Stocks *						
2011	74	294	249	..	..	..
2010 Q4	85	332	265	..	..	..
2011 Q1	91	382	301	..	..	..
Q2	89	378	270	..	..	..
Q3	78	346	286	..	..	..
Q4	74	294	249	..	..	..
<b>(b) Other (1)</b>						
Production						
2011 (R)	..	..	2,125	..	..	..
2010 Q4	225	..	432	..	..	..
2011 Q1	353	..	533	..	..	..
Q2	319	..	562	..	..	..
Q3	..	..	531	..	..	..
Q4 (R)	273	..	499	..	..	..
Deliveries (from)						
2011 (R)	1,172	..	2,108	..	..	..
2010 Q4	227	..	426	..	..	..
2011 Q1	327	..	532	..	..	..
Q2	302	..	554	..	..	..
Q3	300	..	566	..	..	..
Q4 (R)	243	..	455	..	..	..
Stocks *						
2011 (R)	135	1,474	162	..	..	..
2010 Q4	120	1,099	164	..	..	..
2011 Q1	148	1,264	165	..	..	..
Q2	165	1,388	153	..	..	..
Q3	105	1,441	118	..	..	..
Q4 (R)	135	1,474	162	..	..	..
<b>(c) Total</b>						
Production						
2011 (R)	1,582	10,645	4,729	3,848	6,075	5,607
2010 Q4	306	1,968	985	728	1,210	1,150
2011 Q1	463	2,637	1,234	1,024	1,598	1,646
Q2	434	2,841	1,261	982	1,680	1,475
Q3	338	2,755	1,254	975	1,564	1,436
Q4 (R)	346	2,412	980	867	1,232	1,050
Deliveries (from) (R)						
2011	1,580	10,426	4,705	3,786	6,133	5,826
2010 Q4	300	2,037	1,001	747	1,186	1,216
2011 Q1	432	2,568	1,197	916	1,489	1,521
Q2	419	2,721	1,261	995	1,661	1,578
Q3	409	2,706	1,272	1,082	1,600	1,473
Q4 (R)	321	2,431	974	793	1,383	1,254
Stocks * (R)						
2011	209	1,769	411	345	961	437
2010 Q4	205	1,431	430	677	1,092	582
2011 Q1	239	1,646	466	785	1,201	730
Q2	254	1,766	423	772	1,220	643
Q3	183	1,787	405	665	1,112	632
Q4 (R)	209	1,769	411	345	961	437

Note : Regions refer to Government Office Regions

\* Refers to stocks at end of period.

# CONCRETE PRODUCTS

Thousand square metres

South East	South West	England	Wales	Scotland	Great Britain	
						<b>(a) Dense aggregate</b>
						Production
..	6,106	..	3,377	..	23,006	2011
..	1,221	..	709	..	4,541	2010 Q4
..	1,574	..	750	..	5,642	2011 Q1
..	1,694	..	896	..	6,217	Q2
..	1,609	..	956	..	6,217	Q3
411	1,228	..	775	..	4,930	Q4
						Deliveries (from)
..	5,873	..	2,961	..	22,096	2011
..	1,215	..	568	..	4,534	2010 Q4
..	1,415	..	681	..	5,278	2011 Q1
..	1,599	..	741	..	5,871	Q2
..	1,522	..	848	..	5,931	Q3
414	1,337	..	691	..	5,016	Q4
						Stocks *
..	1,458	..	..	302	4,793	2011
..	1,100	..	..	211	3,833	2010 Q4
..	1,260	..	..	233	4,197	2011 Q1
..	1,482	..	..	266	4,647	Q2
137	1,549	..	..	336	4,862	Q3
..	1,458	..	..	302	4,793	Q4
						<b>(b) Other (1)</b>
						Production
..	1,387	..	633	..	31,643	2011 (R)
..	197	..	178	..	6,347	2010 Q4
..	327	..	161	..	8,339	2011 Q1
..	380	..	251	..	8,544	Q2
..	392	..	128	..	7,991	Q3
1,720	287	..	92	..	6,768	Q4 (R)
						Deliveries (from)
..	1,340	..	399	..	30,800	2011 (R)
..	204	..	87	..	6,056	2010 Q4
..	295	..	89	..	7,517	2011 Q1
..	375	..	78	..	8,040	Q2
..	365	..	124	..	8,145	Q3
1,772	304	..	108	..	7,099	Q4 (R)
						Stocks *
..	203	..	..	29	6,768	2011 (R)
..	138	..	..	33	6,320	2010 Q4
..	175	..	..	26	7,318	2011 Q1
..	225	..	..	31	7,863	Q2
3,642	228	..	..	30	7,490	Q3
..	203	..	..	29	6,768	Q4 (R)
						<b>(c) Total</b>
						Production
9,196	7,493	49,175	4,010	1,464	54,648	2011 (R)
1,991	1,418	9,756	887	244	10,887	2010 Q4
2,219	1,902	12,724	911	347	13,982	2011 Q1
2,474	2,075	13,221	1,147	392	14,761	Q2
2,372	2,001	12,696	1,085	427	14,208	Q3
2,131	1,515	10,533	867	298	11,698	Q4 (R)
						Deliveries (from)
8,489	7,213	48,158	3,360	1,378	52,896	2011 (R)
1,675	1,419	9,579	656	355	10,590	2010 Q4
1,860	1,710	11,693	770	332	12,795	2011 Q1
2,128	1,974	12,738	819	354	13,911	Q2
2,315	1,887	12,745	971	360	14,076	Q3
2,186	1,642	10,983	800	333	12,115	Q4 (R)
						Stocks *
3,724	1,661	9,516	1,714	331	11,561	2011 (R)
3,235	1,238	8,890	1,019	244	10,152	2010 Q4
3,594	1,434	10,097	1,160	259	11,516	2011 Q1
3,940	1,707	10,725	1,488	297	12,510	Q2
3,779	1,777	10,339	1,646	367	12,352	Q3
3,724	1,661	9,516	1,714	331	11,561	Q4 (R)

(1) Lightweight aggregate including aerated concrete blocks where appropriate.

Data for 2011Q4, and subsequently data for 2011, have been revised following the receipt of late returns.

# OTHER BUILDING MATERIALS

**Table 13 : Other Building Materials**

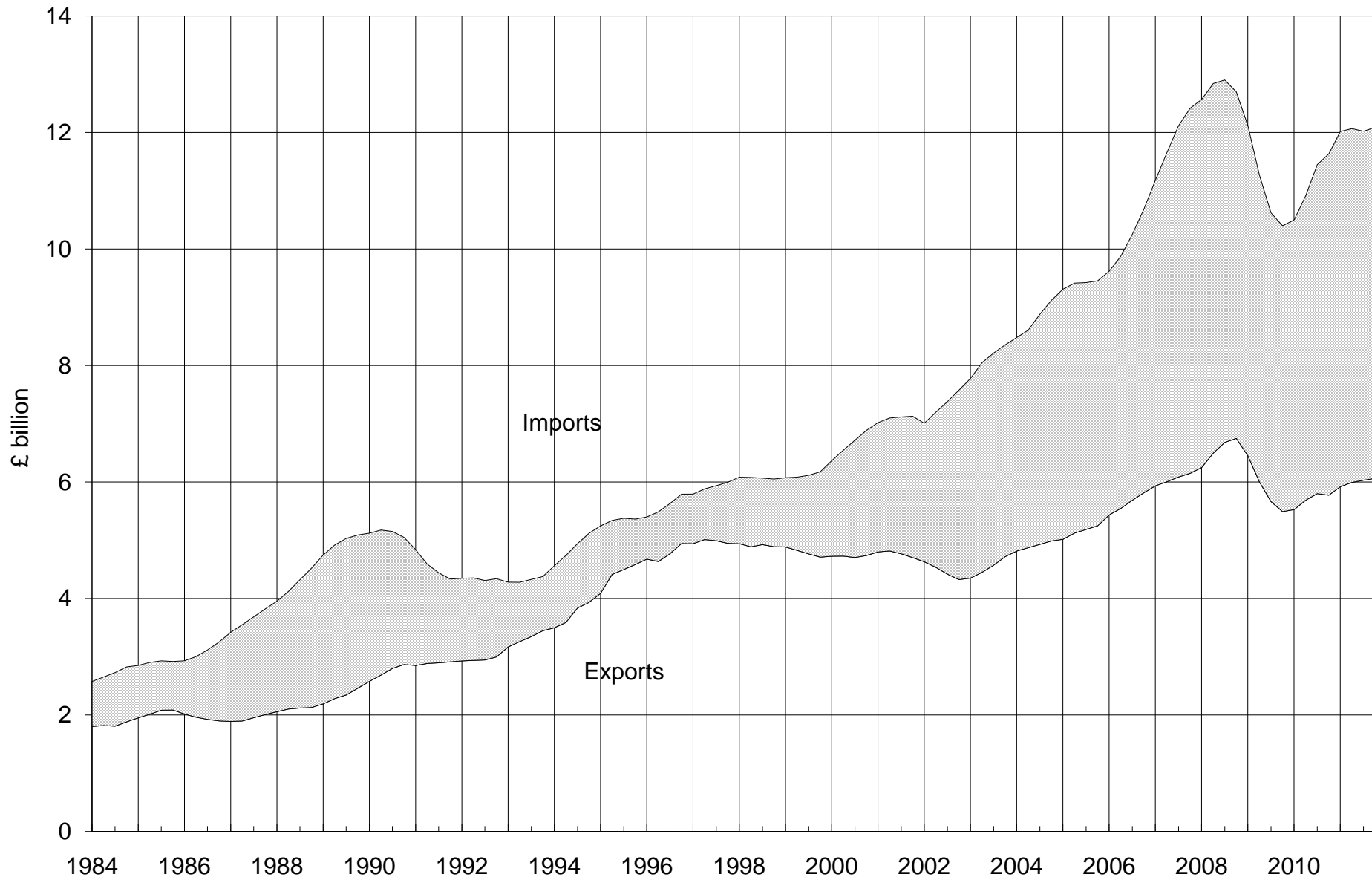
		Great Britain			United Kingdom
		Concrete Roofing Tiles (Th.sq.m. of roof area covered)			Ready-Mixed Concrete # (Th.cu.m.)
		Production	Deliveries	Stocks *	Deliveries
2001		24,825	24,430	4,947	23,008
2002		25,023	24,390	4,586	22,597
2003		21,437	21,401	2,982	22,289
2004		20,739	19,403	2,850	22,856
2005		25,719	24,489	4,902	22,432
2006		23,730	24,118	4,426	23,029
2007		23,551	23,812	3,646	23,548
2008		20,084	19,926	3,899	20,051
2009		14,079	15,612	2,344	14,069
2010		17,817	17,146	3,023	14,038
2011		17,712	17,684	3,126	15,121
2003	Q1	5,821	5,798	4,484	5,388
	Q2	6,280	6,364	4,480	5,892
	Q3	3,917	4,455	2,362	5,750
	Q4	5,418	4,785	2,982	5,259
2004	Q1	5,498	4,294	3,787	5,334
	Q2	5,266	4,800	3,728	5,931
	Q3	4,920	5,134	3,048	6,038
	Q4	5,055	5,175	2,850	5,553
2005	Q1	5,787	4,779	3,732	5,137
	Q2	7,502	6,406	5,818	5,994
	Q3	6,135	7,103	4,850	5,920
	Q4	6,295	6,200	4,902	5,381
2006	Q1	6,792	6,252	5,418	5,445
	Q2	6,002	5,709	5,708	5,995
	Q3	5,448	6,371	4,688	6,047
	Q4	5,489	5,787	4,426	5,542
2007	Q1	6,618	5,629	5,368	5,554
	Q2	5,775	5,728	5,360	6,103
	Q3	5,129	6,541	3,929	6,205
	Q4	6,028	5,914	3,646	5,686
2008	Q1	5,708	5,421	3,922	5,193
	Q2	5,815	5,679	4,488	5,773
	Q3	4,657	4,977	3,840	4,902
	Q4	3,903	3,849	3,899	4,183
2009	Q1	3,664	3,281	4,273	3,583
	Q2	3,055	3,936	3,391	3,637
	Q3	3,580	4,447	2,522	3,628
	Q4	3,779	3,949	2,344	3,221
2010	Q1	4,129	3,505	2,967	3,328
	Q2	4,961	4,922	3,008	3,819
	Q3	4,783	4,824	2,967	3,831
	Q4	3,945	3,894	3,023	3,060
2011	Q1	4,820	4,079	3,858	3,827
	Q2	4,565	4,398	4,022	3,907
	Q3	4,210	4,901	3,316	3,908
	Q4	4,116	4,306	3,126	3,479
2012	Q1	..	..	..	3,463

\* Refers to stocks at the end of the period.

# In April 2012, the Mineral Products Association (who provide these figures), estimated that data understates UK deliveries by around 20-25%. Previously, they had estimated that figures understate UK deliveries by 14-18%.

# Comparison of Imports & Exports

4-quarter moving totals



The data is taken from Table 14

# EXTERNAL TRADE

**Table 14 : Value of Overseas Trade in Selected Materials and Components  
for Constructional Use : Imports (cif) & Exports (fob)**

United Kingdom		Current Prices (£'000)					
		2006	2007	2008	2009	2010	2011
<b>All Building Materials &amp; Components</b>	Imports	10,680,836	12,415,890	12,697,046	10,399,489	11,632,361	12,086,856
	Exports	5,813,301	6,147,721	6,747,415	5,491,055	5,772,232	6,062,203
	Balance	(4,867,535)	(6,268,169)	(5,949,631)	(4,908,434)	(5,860,129)	(6,024,653)
<b>All Raw Materials</b>	Imports	180,137	213,589	228,019	158,706	174,275	199,860
	Exports	98,057	124,957	116,930	135,125	132,349	145,509
	Balance	(82,080)	(88,632)	(111,089)	(23,581)	(41,926)	(54,351)
Sand for construction	Imports	5,075	6,455	6,369	5,916	5,259	7,558
	Exports	5,770	7,769	9,373	7,967	7,398	7,782
Crushed Rock : uncoated	Imports	39,308	38,882	43,442	32,030	36,490	41,248
	Exports	65,985	71,990	77,930	76,898	73,902	83,349
Crushed Rock : coated	Imports	2,245	2,927	3,206	2,227	2,642	3,057
	Exports	2,621	3,937	3,862	3,061	2,988	4,727
Building Stone : unprocessed	Imports	95,903	115,064	124,436	93,174	99,236	106,517
	Exports	1,777	3,209	2,159	2,114	4,053	3,683
Slate : unprocessed	Imports	10,894	11,590	9,295	6,168	5,799	4,679
	Exports	309	1,579	813	1,924	844	828
Gypsum & Anhydrite	Imports	8,649	8,626	8,301	8,353	7,040	7,284
	Exports	511	493	899	768	1,148	1,035
Bituminous Shale	Imports	18,063	30,045	32,970	10,838	17,809	29,517
	Exports	21,084	35,980	21,894	42,393	42,016	44,105
<b>All Semi-Manufactures</b>	Imports	1,756,076	2,196,078	1,972,139	1,389,572	1,639,598	1,689,040
	Exports	618,573	644,415	648,822	426,190	480,686	486,250
	Balance	(1,137,503)	(1,551,663)	(1,323,317)	(963,382)	(1,158,912)	(1,202,790)
Clinker	Imports	40,922	60,554	35,973	18,520	17,331	19,940
	Exports	2,644	1,899	1,271	835	1,205	2,762
Sawn Wood > 6mm thick	Imports	727,916	915,900	610,292	554,187	705,638	620,303
	Exports	38,370	32,010	20,957	16,025	19,437	14,691
Densified Wood	Imports	2,782	2,332	1,767	1,452	2,301	1,939
	Exports	422	319	272	268	518	568
Particle Board	Imports	56,174	55,934	45,497	27,913	30,755	34,432
	Exports	16,357	9,377	8,920	8,382	8,875	8,040
Laminated Wood	Imports	250,615	282,912	296,969	215,021	146,691	132,914
	Exports	24,436	23,172	21,935	15,839	11,698	11,051
Fibreboard	Imports	61,429	72,499	61,614	56,511	53,901	60,328
	Exports	12,532	10,575	8,966	15,055	24,727	11,105
Steel for Fabrication	Imports	278,232	463,477	529,327	184,164	286,866	355,265
	Exports	236,427	257,126	301,366	185,537	216,815	207,017
Aluminium for Fabrication	Imports	272,983	277,251	315,948	268,155	325,157	402,222
	Exports	220,651	234,348	216,596	123,494	131,665	160,912
Profiles of Vinyl Chloride	Imports	48,747	41,560	44,169	44,827	35,911	25,100
	Exports	27,349	33,766	25,781	23,770	23,337	23,983
Slag for Construction	Imports	4,626	8,607	11,580	2,331	5,825	1,906
	Exports	1,747	1,231	1,018	921	1,112	1,280
Tar & Bituminous Mixtures	Imports	9,261	12,285	17,424	15,156	27,742	32,334
	Exports	26,008	27,895	27,680	22,781	27,613	26,895
Lime	Imports	2,389	2,767	1,579	1,335	1,480	2,357
	Exports	11,630	12,697	14,060	13,283	13,684	17,946

## EXTERNAL TRADE

Current Prices (£'000)

2010 Q4	2011 Q1	Q2	Q3	Q4		
2,843,270	3,029,093 (R)	3,049,875 (R)	3,099,175 (R)	2,908,713	Imports	<b>All Building Materials &amp; Components</b>
1,408,706	1,493,179 (R)	1,587,010 (R)	1,541,506 (R)	1,440,508	Exports	
(1,434,564)	(1,535,914) (R)	(1,462,865) (R)	(1,557,669) (R)	(1,468,205)	Balance	
40,312	36,079	64,025	48,590 (R)	51,166	Imports	<b>All Raw Materials</b>
34,715	23,767 (R)	47,517 (R)	43,145 (R)	31,080	Exports	
(5,597)	(12,312) (R)	(16,508) (R)	(5,445) (R)	(20,086)	Balance	
1,288	1,534	2,321	2,077	1,626	Imports	Sand for construction
1,886	1,683	2,081	2,100	1,918	Exports	
9,466	9,060	9,372	7,072 (R)	15,744	Imports	Crushed Rock : uncoated
18,698	18,143 (R)	26,171 (R)	19,164 (R)	19,871	Exports	
772	587	859	795	816	Imports	Crushed Rock : coated
332	483	1,404	1,529	1,311	Exports	
22,600	21,577	33,896	27,525 (R)	23,519	Imports	Building Stone : unprocessed
968	916	1,398	814	555	Exports	
1,223	874	1,463	1,395 (R)	947	Imports	Slate : unprocessed
282	221	247	167	193	Exports	
1,632	2,221	2,163	1,112	1,788	Imports	Gypsum & Anhydrite
325	293	214	260	268	Exports	
3,331	226	13,951	8,614	6,726	Imports	Bituminous Shale
12,224	2,028	16,002	19,111	6,964	Exports	
393,812	401,377 (R)	471,642 (R)	431,808 (R)	384,213	Imports	<b>All Semi-Manufactures</b>
111,250	131,875 (R)	131,864 (R)	116,757 (R)	105,754	Exports	
(282,562)	(269,502) (R)	(339,778) (R)	(315,051) (R)	(278,459)	Balance	
4,568	4,324	4,550	5,645	5,421	Imports	Clinker
608	360	320	1,426 (R)	656	Exports	
158,068	148,740 (R)	184,141 (R)	155,103 (R)	132,319	Imports	Sawn Wood > 6mm thick
3,947	3,565	4,570	3,809 (R)	2,747	Exports	
459	570	480	458	431	Imports	Densified Wood
150	150	137	163	118	Exports	
6,842	7,148	7,575	11,564 (R)	8,145	Imports	Particle Board
1,923	1,980	2,015	1,878 (R)	2,167	Exports	
30,118	36,225	36,540	33,504 (R)	26,645	Imports	Laminated Wood
2,175	3,512	2,215	2,969 (R)	2,355	Exports	
12,406	14,362	14,366	16,337 (R)	15,263	Imports	Fibreboard
6,841	3,153 (R)	2,413	2,845 (R)	2,694	Exports	
86,437	86,510 (R)	99,313 (R)	85,487 (R)	83,955	Imports	Steel for Fabrication
48,665	62,759 (R)	55,568 (R)	44,091 (R)	44,599	Exports	
81,067	91,195 (R)	107,994 (R)	104,351 (R)	98,682	Imports	Aluminium for Fabrication
32,085	41,720 (R)	46,523	39,278 (R)	33,391	Exports	
8,003	6,243 (R)	6,030 (R)	7,194 (R)	5,633	Imports	Profiles of Vinyl Chloride
5,316	5,328	7,448	6,113 (R)	5,094	Exports	
938	324	742	437 (R)	403	Imports	Slag for Construction
243	243	468	351	218	Exports	
4,650	5,357 (R)	9,539 (R)	11,148 (R)	6,290	Imports	Tar & Bituminous Mixtures
6,146	4,962	6,239	8,641 (R)	7,053	Exports	
256	379	372	580 (R)	1,026	Imports	Lime
3,151	4,143	3,948	5,193	4,662	Exports	

# EXTERNAL TRADE

**Table 14 : Value of Overseas Trade in Selected Materials and Components  
for Constructional Use : Imports (cif) & Exports (fob)**

United Kingdom		Current Prices (£'000)					
		2006	2007	2008	2009	2010	2011
<b>All Products &amp; Components</b>	Imports	8,744,623	10,006,223	10,496,888	8,851,211	9,818,488	10,197,956
	Exports	5,096,671	5,378,349	5,981,663	4,929,740	5,159,197	5,430,444
	Balance	(3,647,952)	(4,627,874)	(4,515,225)	(3,921,471)	(4,659,291)	(4,767,512)
Wood sleepers (rail & tram)	Imports	6,844	7,907	10,736	5,761	5,065	7,632
	Exports	605	905	1,074	688	717	893
Building Stone : processed	Imports	206,066	243,019	252,176	211,999	217,570	177,484
	Exports	36,148	34,465	38,557	37,466	30,751	10,551
Slate Roofing Tiles*	Imports	50,718	58,165	65,872	57,067	63,188	..
	Exports	5,479	6,941	6,559	8,552	6,286	..
Other Slate Products*	Imports	10,641	8,963	8,204	8,002	8,381	..
	Exports	2,406	2,348	1,643	1,141	1,725	..
Slate Products*	Imports	..	..	..	..	..	72,273
	Exports	..	..	..	..	..	7,380
Portland Cement	Imports	52,408	59,422	65,930	54,475	52,246	48,460
	Exports	28,179	26,525	13,271	4,897	4,178	5,454
Other Cements	Imports	24,858	24,705	31,452	47,618	50,669	61,526
	Exports	32,357	31,336	29,824	24,202	35,097	37,960
Steel Sheet Piling	Imports	55,911	71,747	78,763	48,577	61,527	51,335
	Exports	18,609	20,205	32,009	24,175	16,226	18,538
Ready-Mixed Concrete	Imports	612	686	826	711	822	36
	Exports	10,116	10,378	12,639	4,600	3,378	3,036
Concrete Reinforcing Bars	Imports	150,492	181,795	210,556	72,138	86,842	135,676
	Exports	38,587	107,236	194,136	68,087	60,252	46,970
Mortars	Imports	5,247	6,225	7,021	7,949	7,357	8,849
	Exports	5,998	5,772	6,410	5,360	3,757	8,894
Clay Bricks	Imports	29,102	35,245	25,877	18,675	19,778	23,072
	Exports	13,540	10,591	7,133	3,703	3,162	2,841
Clay Roofing Tiles	Imports	10,285	10,348	10,104	7,576	9,116	8,759
	Exports	1,680	303	276	511	589	195
Clay Pipes	Imports	600	669	313	146	225	258
	Exports	6,262	5,518	5,775	4,177	3,472	4,124
Other Clay Products	Imports	5,885	5,602	6,668	5,453	5,225	6,070
	Exports	11,123	17,502	18,852	2,851	3,188	3,566
Concrete Blocks & Bricks	Imports	4,544	11,475	8,615	4,421	4,369	7,359
	Exports	26,813	27,318	21,102	11,844	9,203	8,677
Concrete Roofing Tiles*	Imports	4,845	4,664	7,195	7,342	5,017	..
	Exports	7,857	7,013	3,844	2,402	2,949	..
Other Concrete Tiles & Paving*	Imports	14,703	16,130	18,353	15,576	13,297	..
	Exports	33,692	38,280	34,756	19,151	13,594	..
Concrete Tiles and Pavings*	Imports	..	..	..	..	..	18,955
	Exports	..	..	..	..	..	13,385
Prefabricated Concrete Products	Imports	22,439	26,763	34,841	23,582	28,811	18,966
	Exports	28,936	23,240	19,042	8,967	12,390	4,426
Concrete Pipes	Imports	27,303	32,767	36,740	40,646	45,485	61,401
	Exports	27,010	32,536	31,413	30,366	24,339	26,571



Current Prices (£'000)

2010 Q4	2011 Q1	Q2	Q3	Q4		
2,409,146	2,591,637 (R)	2,514,208 (R)	2,618,777 (R)	2,473,334	Imports	<b>All Products &amp; Components</b>
1,262,741	1,337,537 (R)	1,407,629 (R)	1,381,604 (R)	1,303,674	Exports	
(1,146,405)	(1,254,100) (R)	(1,106,579) (R)	(1,237,173) (R)	(1,169,660)	Balance	
850	1,614	1,935	2,071 (R)	2,012	Imports	Wood sleepers (rail & tram)
108	106	382	130	275	Exports	
51,851	46,565	44,938 (R)	42,647 (R)	43,334	Imports	Building Stone : processed
6,570	2,342	3,300	2,696 (R)	2,213	Exports	
16,682	..	..	..	..	Imports	Slate Roofing Tiles*
1,766	..	..	..	..	Exports	
1,886	..	..	..	..	Imports	Other Slate Products*
693	..	..	..	..	Exports	
..	16,918	18,839	19,151 (R)	17,365	Imports	Slate Products*
..	1,630	1,911	2,105 (R)	1,734	Exports	
9,397	11,503	12,829	12,382 (R)	11,746	Imports	Portland Cement
1,062	656	2,180	1,383 (R)	1,235	Exports	
15,437	14,289	16,683	16,570 (R)	13,984	Imports	Other Cements
7,587	9,937	9,123	10,978 (R)	7,922	Exports	
15,987	16,157 (R)	15,444 (R)	9,120 (R)	10,614	Imports	Steel Sheet Piling
3,408	4,839 (R)	3,162 (R)	6,995 (R)	3,542	Exports	
84	11	17	1	7	Imports	Ready-Mixed Concrete
863	664	646	1,036 (R)	690	Exports	
13,534	34,672 (R)	36,886 (R)	32,505 (R)	31,613	Imports	Concrete Reinforcing Bars
12,080	8,964 (R)	15,667	14,385 (R)	7,954	Exports	
1,371	2,335	2,129 (R)	2,392 (R)	1,993	Imports	Mortars
670	1,834	2,101	3,131	1,828	Exports	
3,927	5,445	5,731	6,012 (R)	5,884	Imports	Clay Bricks
520	624	737	750	730	Exports	
2,329	2,162	2,314	2,311 (R)	1,972	Imports	Clay Roofing Tiles
98	76	29	69	21	Exports	
12	82	61	90	25	Imports	Clay Pipes
876	917	1,193	1,106	908	Exports	
1,221	1,814	1,705	1,614 (R)	937	Imports	Other Clay Products
768	1,588	820	481 (R)	677	Exports	
967	1,719 (R)	1,778 (R)	2,293 (R)	1,569	Imports	Concrete Blocks & Bricks
1,511	1,857	3,020	2,231 (R)	1,569	Exports	
1,196	..	..	..	..	Imports	Concrete Roofing Tiles*
752	..	..	..	..	Exports	
3,552	..	..	..	..	Imports	Other Concrete Tiles & Paving*
2,194	..	..	..	..	Exports	
..	4,631 (R)	5,063 (R)	4,912 (R)	4,349	Imports	Concrete Tiles and Pavings*
..	4,631 (R)	5,063 (R)	3,948 (R)	2,668	Exports	
5,927	6,694 (R)	6,260 (R)	3,166 (R)	2,846	Imports	Prefabricated Concrete Products
2,166	1,970 (R)	820 (R)	841 (R)	795	Exports	
11,414	17,212	14,291	15,711 (R)	14,187	Imports	Concrete Pipes
4,236	5,505	5,989	7,710 (R)	7,367	Exports	

\* Due to changes to in European Commission product classifications Slate Roofing Tiles and Other Slate Products have been combined. Similarly, Concrete Roofing Tiles and Other Concrete Tiles and Pavings have been combined.

# EXTERNAL TRADE

**Table 14 : Value of Overseas Trade in Selected Materials and Components for Constructional Use : Imports (cif) & Exports (fob)**

United Kingdom		Current Prices (£'000)					
		2006	2007	2008	2009	2010	2011
<b>Products &amp; Components (continued)</b>							
Structural Units (steel)	Imports	361,685	526,140	564,645	470,772	604,136	643,398
	Exports	445,237	498,331	604,520	505,127	486,891	470,480
Structural Units (aluminium)	Imports	149,756	220,258	251,909	292,334	178,196	231,714
	Exports	81,708	81,777	98,289	71,158	54,971	61,209
Steel Tubes & Hollow Sections	Imports	117,181	142,420	157,616	108,794	130,955	154,054
	Exports	109,871	114,756	132,537	82,990	108,503	128,433
Bituminous Roofing Felt*	Imports	21,082	25,627	30,853	35,139	39,835	..
	Exports	5,756	5,406	3,507	3,392	2,744	..
Other Asphalt products*	Imports	8,449	9,966	9,999	9,987	10,750	..
	Exports	16,756	16,768	18,030	19,595	14,474	..
Asphalt Products*	Imports	..	..	..	..	..	53,971
	Exports	..	..	..	..	..	18,070
Mineral Insulating Materials	Imports	84,002	81,851	78,961	74,096	81,060	82,885
	Exports	137,321	139,360	132,697	106,865	146,430	164,882
Glass Fibre	Imports	2,667	1,482	1,185	552	381	603
	Exports	820	1,188	2,829	1,220	1,075	2,669
Fibre Cement Products	Imports	24,343	31,344	28,053	28,663	31,019	35,082
	Exports	6,619	6,668	7,680	4,847	5,849	9,199
Building Plasters <sup>1</sup>	Imports	5,726	6,172	6,868	8,845	..	..
	Exports	8,122	7,622	8,077	7,475	..	..
Plasters <sup>1</sup>	Imports	..	..	..	..	13,820	11,499
	Exports	..	..	..	..	7,905	9,092
Plasterboard	Imports	34,275	30,302	16,057	13,683	15,007	18,824
	Exports	24,261	19,798	18,397	16,505	12,912	12,522
Copper Pipes	Imports	212,455	217,861	245,212	182,487	241,116	142,973
	Exports	167,830	153,412	171,581	116,520	146,447	86,771
Lead Pipes & Fittings**	Imports	168	93	18	509	148	..
	Exports	204	48	626	209	243	..
Zinc Pipes & Fittings*	Imports	328	1,154	918	494	757	..
	Exports	5,446	7,166	6,016	4,388	914	..
Other Zinc Building Products*	Imports	14,481	12,447	13,117	10,409	13,000	..
	Exports	23,874	20,946	22,026	22,639	26,529	..
Zinc Building Products*	Imports	..	..	..	..	..	12,563
	Exports	..	..	..	..	..	24,595
Plastic Pipes	Imports	100,143	114,727	133,929	117,126	105,667	113,993
	Exports	187,793	205,332	211,718	202,745	149,389	156,534
Other Plastic Building Products	Imports	133,409	148,828	149,235	138,250	148,270	155,660
	Exports	100,498	115,008	117,407	96,902	110,278	116,256
Builders Ironmongery	Imports	452,336	498,373	505,665	278,144	312,316	313,135
	Exports	155,065	157,424	165,476	94,402	112,191	127,672
Nails & Screws	Imports	51,836	59,853	61,080	48,123	66,865	64,857
	Exports	15,228	12,553	12,851	8,281	8,949	10,927
Mastics, Putty	Imports	138,982	148,599	151,898	132,061	143,430	152,335
	Exports	95,347	103,998	119,256	110,080	115,349	139,603
Paints & Varnishes	Imports	315,961	339,581	356,451	345,977	376,374	401,146
	Exports	436,044	442,126	551,564	503,518	552,294	621,033

<sup>1</sup> From Q1 2010 onwards the Plasters category will contain Building Plaster and Other Plasters as Building Plasters data is no longer collected

## EXTERNAL TRADE

Current Prices (£'000)

2010 Q4	2011 Q1	Q2	Q3	Q4	Products & Components (continued)	
120,377	167,407 (R)	169,469 (R)	170,064 (R)	136,458	Imports	Structural Units (steel)
111,207	120,755 (R)	124,871 (R)	119,866 (R)	104,988	Exports	
37,706	42,512 (R)	44,084 (R)	75,821 (R)	69,297	Imports	Structural Units (aluminium)
11,906	14,643	14,767	16,167 (R)	15,632	Exports	
31,435	46,581 (R)	37,818 (R)	35,872 (R)	33,783	Imports	Steel Tubes & Hollow Sections
27,822	34,704	32,252	33,566 (R)	27,911	Exports	
10,214	..	..	..	..	Imports	Bituminous Roofing Felt*
631	..	..	..	..	Exports	
3,241	..	..	..	..	Imports	Other Asphalt products*
2,798	..	..	..	..	Exports	
..	12,141 (R)	13,049	14,993 (R)	13,788	Imports	Asphalt Products*
..	3,564	4,384	4,802 (R)	5,320	Exports	
19,068	20,087	19,513 (R)	22,558 (R)	20,727	Imports	Mineral Insulating Materials
36,276	38,559	42,232	44,298 (R)	39,793	Exports	
58	108	155 (R)	201	139	Imports	Glass Fibre
296	521	709	892 (R)	547	Exports	
7,460	7,773	8,974	9,539	8,796	Imports	Fibre Cement Products
1,539	1,316	2,879 (R)	2,692 (R)	2,312	Exports	
..	..	..	..	..	Imports	Building Plasters <sup>1</sup>
..	..	..	..	..	Exports	
3,364	2,815	3,142	3,060 (R)	2,482	Imports	Plasters <sup>1</sup>
1,783	2,369	2,428	2,289 (R)	2,006	Exports	
3,977	4,714	5,155 (R)	5,069 (R)	3,886	Imports	Plasterboard
2,678	3,795	2,901	2,989 (R)	2,837	Exports	
56,304	24,493	43,940	51,408 (R)	23,132	Imports	Copper Pipes
39,309	20,354	25,424 (R)	23,000 (R)	17,993	Exports	
2	..	..	..	..	Imports	Lead Pipes & Fittings**
30	..	..	..	..	Exports	
233	..	..	..	..	Imports	Zinc Pipes & Fittings*
111	..	..	..	..	Exports	
3,041	..	..	..	..	Imports	Other Zinc Building Products*
6,748	..	..	..	..	Exports	
..	3,317	3,552 (R)	2,753 (R)	2,941	Imports	Zinc Building Products*
..	6,806	6,976 (R)	5,121 (R)	5,692	Exports	
24,247	29,530 (R)	29,356 (R)	30,580 (R)	24,527	Imports	Plastic Pipes
32,597	39,127 (R)	39,968	39,683 (R)	37,756	Exports	
33,508	37,862 (R)	40,795 (R)	40,187 (R)	36,816	Imports	Other Plastic Building Products
26,971	28,533	35,663 (R)	27,076 (R)	24,984	Exports	
75,332	77,801 (R)	75,264 (R)	81,390 (R)	78,680	Imports	Builders Ironmongery
28,013	34,004 (R)	33,104 (R)	31,814 (R)	28,750	Exports	
16,338	16,168	15,545	17,320 (R)	15,824	Imports	Nails & Screws
2,191	2,103	3,524	2,929 (R)	2,371	Exports	
34,686	34,225 (R)	39,207 (R)	42,135 (R)	36,768	Imports	Mastics, Putty
28,892	33,332 (R)	37,237 (R)	34,885 (R)	34,149	Exports	
88,948	97,995	101,296 (R)	109,853 (R)	92,002	Imports	Paints & Varnishes
135,902	148,917 (R)	168,216 (R)	157,888 (R)	146,012	Exports	

\* Due to changes to in European Commission product classifications Bituminous Roofing Felt and Other Asphalt products have been combined. Similarly, Zinc Pipes & Fittings and Other Zinc Building Products have been combined.

\*\* Data for Lead Pipes and Fittings are no longer collected.

The Q2 2011 Exports figures for Zinc Building Products has been corrected as it was erroneous due to a processing error where the Imports figure was being reported. Yearly totals were not erroneous.

# EXTERNAL TRADE

**Table 14 : Value of Overseas Trade in Selected Materials and Components  
for Constructional Use : Imports (cif) & Exports (fob)**

United Kingdom		Current Prices (£'000)					
		2006	2007	2008	2009	2010	2011
<b>Products &amp; Components (continued)</b>							
Unglazed Ceramic Tiles	Imports	54,271	64,691	71,099	62,181	56,551	63,565
	Exports	2,475	4,420	3,607	2,424	2,829	2,730
Glazed Ceramic Tiles	Imports	285,080	290,867	279,656	256,303	224,557	212,560
	Exports	21,444	20,554	17,706	15,671	15,455	18,657
Ceramic Sanitaryware	Imports	173,687	181,603	174,194	159,123	168,666	177,577
	Exports	54,231	58,229	53,471	37,635	37,883	37,118
Plastic Sanitaryware	Imports	105,586	126,472	120,004	114,695	112,513	109,364
	Exports	78,717	78,811	83,908	79,444	67,886	62,531
Metal Sanitaryware	Imports	123,203	139,820	143,118	111,737	124,666	140,564
	Exports	32,212	33,511	33,167	31,969	28,274	33,137
Flat Glass	Imports	55,901	71,800	61,061	53,819	61,048	64,820
	Exports	67,142	83,174	107,783	60,380	73,175	109,162
Other Glass Products	Imports	78,695	76,235	98,993	82,857	81,083	84,772
	Exports	31,631	37,712	40,296	34,188	33,081	31,940
Wood Veneers	Imports	40,586	38,516	39,407	26,102	31,681	36,047
	Exports	10,607	10,243	10,034	5,747	5,824	7,592
Wood Mouldings	Imports	79,513	73,907	64,579	55,648	66,802	59,080
	Exports	20,362	18,289	11,169	8,861	9,660	8,963
Wood Block Flooring	Imports	132,978	125,111	125,242	112,661	144,394	139,954
	Exports	8,448	5,465	6,136	5,746	4,535	4,481
Other Builder's Woodwork	Imports	93,869	109,023	101,242	80,645	99,394	89,359
	Exports	21,562	19,079	15,908	14,395	14,319	16,120
Windows (wood)	Imports	71,679	84,257	121,171	110,061	111,934	118,826
	Exports	9,465	12,880	10,219	10,721	7,786	9,885
Doors (wood)	Imports	191,637	205,158	209,133	184,609	217,810	201,914
	Exports	38,546	37,008	26,929	19,395	16,873	13,323
Doors & Windows (steel)	Imports	54,493	40,294	39,652	39,726	35,987	35,409
	Exports	21,231	25,824	26,300	20,643	19,222	18,916
Doors & Windows (aluminium)	Imports	68,235	65,655	63,705	64,279	72,365	72,250
	Exports	35,883	32,687	25,473	24,410	19,950	24,125
Doors & Windows (plastic)	Imports	41,045	39,459	39,377	43,885	46,337	52,732
	Exports	68,641	63,218	56,119	41,193	44,433	39,356
Cork Tiles	Imports	2,540	2,877	2,258	1,779	2,951	4,018
	Exports	2,878	1,611	1,641	1,702	1,646	2,139
Linoleum Floor Coverings	Imports	213,518	242,787	256,585	244,149	279,065	315,976
	Exports	188,215	195,735	224,522	213,628	228,832	233,457
Wallpaper	Imports	40,997	58,962	58,636	54,487	56,701	58,200
	Exports	54,868	67,165	73,506	66,782	82,940	85,689
Textile Wall Coverings	Imports	1,187	1,572	2,833	2,346	3,323	3,007
	Exports	373	598	500	357	609	684

## EXTERNAL TRADE

Current Prices (£'000)

2010 Q4	2011 Q1	Q2	Q3	Q4	Products & Components (continued)	
13,759 741	14,962 (R) 814	16,597 (R) 545	16,596 (R) 793	15,410 578	Imports Exports	Unglazed Ceramic Tiles
57,008 4,302	58,896 (R) 4,525	53,194 (R) 4,680	51,850 (R) 4,337	48,620 5,115	Imports Exports	Glazed Ceramic Tiles
42,636 10,160	49,028 (R) 9,849	42,225 (R) 10,282	42,907 (R) 9,215 (R)	43,417 7,772	Imports Exports	Ceramic Sanitaryware
26,287 14,843	27,615 (R) 17,181	26,124 15,806	28,026 (R) 15,466 (R)	27,599 14,078	Imports Exports	Plastic Sanitaryware
33,644 7,791	39,016 (R) 8,378	36,436 (R) 8,876	33,465 (R) 8,440 (R)	31,647 7,443	Imports Exports	Metal Sanitaryware
17,798 17,774	15,263 22,498	15,040 22,737	17,786 (R) 32,049	16,731 31,878	Imports Exports	Flat Glass
18,866 8,564	20,082 (R) 8,876	20,607 (R) 7,532 (R)	23,527 (R) 9,045 (R)	20,556 6,487	Imports Exports	Other Glass Products
9,801 1,935	9,007 (R) 1,564	9,486 1,762	8,949 (R) 2,546	8,605 1,720	Imports Exports	Wood Veneers
13,097 2,110	18,688 2,393	15,473 2,446	13,458 (R) 2,354	11,461 1,770	Imports Exports	Wood Mouldings
34,496 1,252	35,886 (R) 1,129	32,822 1,138	36,021 (R) 914	35,225 1,300	Imports Exports	Wood Block Flooring
23,905 3,998	21,758 4,274	24,285 3,976	22,999 (R) 3,840 (R)	20,317 4,030	Imports Exports	Other Builder's Woodwork
28,930 1,972	27,663 2,786	29,362 2,439	31,116 (R) 2,701	30,685 1,959	Imports Exports	Windows (wood)
52,043 4,789	50,331 2,927	54,882 (R) 3,913	51,365 (R) 3,441	45,336 3,042	Imports Exports	Doors (wood)
9,421 5,421	9,144 (R) 4,399 (R)	8,652 4,315 (R)	9,050 (R) 4,953 (R)	8,563 5,249	Imports Exports	Doors & Windows (steel)
23,013 4,529	15,951 5,117	17,954 6,108	20,317 (R) 5,269	18,028 7,631	Imports Exports	Doors & Windows (aluminium)
11,171 9,375	11,896 7,238	13,203 14,141	14,776 (R) 8,980 (R)	12,857 8,997	Imports Exports	Doors & Windows (plastic)
732 408	1,574 604	871 874	776 376	797 285	Imports Exports	Cork Tiles
73,018 50,649	75,886 (R) 56,086 (R)	84,353 (R) 62,851 (R)	78,871 (R) 60,695 (R)	76,866 53,825	Imports Exports	Linoleum Floor Coverings
13,737 22,007	15,178 (R) 23,498 (R)	15,533 (R) 23,364 (R)	12,438 (R) 19,628 (R)	15,051 19,199	Imports Exports	Wallpaper
870 148	689 145 (R)	655 (R) 118 (R)	900 (R) 163 (R)	763 258	Imports Exports	Textile Wall Coverings

# EXTERNAL TRADE

**Table 14 : Value of Overseas Trade in Selected Materials and Components for Constructional Use : Imports (cif) & Exports (fob)**

United Kingdom		Current Prices (£'000)					
		2006	2007	2008	2009	2010	2011
<b>Products &amp; Components (continued)</b>							
Fitted Kitchens (assembled)	Imports	98,938	144,017	171,688	130,058	111,345	79,172
	Exports	34,260	35,322	24,163	17,307	16,122	15,721
Prefabricated Buildings (wood)	Imports	21,986	49,086	40,341	34,264	32,687	34,800
	Exports	22,603	27,807	15,170	13,234	10,546	8,397
Prefabricated Buildings (steel)	Imports	30,281	30,083	50,546	46,291	29,783	37,336
	Exports	42,881	27,464	46,140	48,512	37,158	45,826
Prefabricated Buildings (other)	Imports	67,586	73,414	74,165	44,887	34,323	28,076
	Exports	45,997	35,795	72,310	28,104	17,643	19,082
Mobile Homes	Imports	7,196	7,113	6,574	5,065	2,165	1,430
	Exports	8,574	11,291	7,250	7,750	3,666	2,315
Taps & Valves	Imports	265,657	277,804	315,427	269,199	322,207	336,241
	Exports	62,345	72,708	60,597	64,447	73,202	66,827
Pumps (circulating)	Imports	25,544	24,274	21,754	19,900	21,878	22,060
	Exports	28,407	27,131	27,964	23,603	32,078	22,154
Central Heating Boilers	Imports	473,691	493,841	547,726	566,588	554,452	571,259
	Exports	76,578	70,581	80,756	91,053	74,832	77,497
Radiators	Imports	193,948	197,513	184,218	175,518	189,792	178,107
	Exports	37,707	46,937	57,884	34,303	31,085	28,172
Water Heaters	Imports	75,237	88,897	105,755	105,711	84,627	90,755
	Exports	67,902	64,471	84,810	64,883	63,036	67,526
Space Heaters	Imports	120,029	107,581	110,403	114,047	136,729	147,581
	Exports	39,930	37,313	35,118	32,068	32,001	32,389
Fan Systems	Imports	152,830	198,750	161,772	127,327	172,161	188,543
	Exports	132,081	94,651	114,006	107,846	109,339	124,268
Air Conditioning Equipment	Imports	379,149	514,454	644,353	462,588	527,857	580,215
	Exports	201,257	231,144	268,134	240,594	270,112	262,911
Air Purifying Equipment	Imports	31,441	29,828	41,389	50,854	53,220	67,045
	Exports	114,377	120,706	138,002	102,158	148,638	182,667
Hand Driers	Imports	5,010	4,057	7,634	7,443	8,987	10,496
	Exports	1,036	1,648	1,017	1,247	1,905	1,950
Meters	Imports	25,666	24,502	24,155	24,237	28,701	44,074
	Exports	25,025	26,216	47,988	42,969	52,825	72,516
Plugs & Sockets	Imports	232,657	231,664	269,479	257,049	303,121	328,829
	Exports	169,346	148,672	153,173	137,529	182,364	214,433
Electrical Wires	Imports	1,028,495	1,303,905	1,236,486	909,830	1,213,470	1,345,551
	Exports	458,568	521,508	554,723	425,815	515,544	572,476
Electrical Insulators	Imports	37,729	30,477	34,957	29,102	30,596	26,518
	Exports	28,858	33,830	32,548	26,983	32,574	30,136
Lamps & Fittings	Imports	392,781	449,230	462,930	424,435	515,852	520,532
	Exports	195,049	221,180	236,971	223,741	216,816	266,225
Fire & Security Alarms	Imports	153,054	144,891	139,973	136,550	151,642	119,768
	Exports	150,929	154,520	182,447	238,608	208,281	172,323
Lifts & Escalators	Imports	104,250	118,401	129,307	115,017	96,973	102,771
	Exports	24,833	43,142	28,699	19,697	14,628	21,220

## EXTERNAL TRADE

Current Prices (£'000)

2010 Q4	2011 Q1	Q2	Q3	Q4	Products & Components (continued)	
26,254	20,416	20,495	20,532 (R)	17,729	Imports	Fitted Kitchens (assembled)
4,348	3,740	4,319	3,696 (R)	3,966	Exports	
5,891	8,491	10,834	9,193 (R)	6,282	Imports	Prefabricated Buildings (wood)
1,632	1,508	2,857	2,080 (R)	1,952	Exports	
7,155	9,898	12,310	6,072 (R)	9,056	Imports	Prefabricated Buildings (steel)
7,702	9,088	16,862	7,856	12,020	Exports	
4,213	8,097	10,612	5,395 (R)	3,972	Imports	Prefabricated Buildings (other)
2,609	4,378	4,340	5,457 (R)	4,907	Exports	
137	139	751	300 (R)	240	Imports	Mobile Homes
871	721	418	726	450	Exports	
75,566	88,628 (R)	82,461 (R)	80,091 (R)	85,061	Imports	Taps & Valves
19,355	16,347	17,658	15,451 (R)	17,371	Exports	
4,920	6,432	4,405	5,525	5,698	Imports	Pumps (circulating)
5,755	6,347	5,140 (R)	3,309	7,358	Exports	
158,840	150,325 (R)	122,517	146,782 (R)	151,635	Imports	Central Heating Boilers
22,911	21,394	17,855 (R)	15,726 (R)	22,522	Exports	
47,595	53,813 (R)	40,659 (R)	39,400 (R)	44,235	Imports	Radiators
7,994	7,081	4,019 (R)	8,418 (R)	8,654	Exports	
21,136	20,597 (R)	22,801	23,324 (R)	24,033	Imports	Water Heaters
16,573	18,569 (R)	16,873	16,904 (R)	15,180	Exports	
44,891	30,341	24,079	41,717 (R)	51,444	Imports	Space Heaters
10,348	8,494 (R)	6,238 (R)	8,228 (R)	9,429	Exports	
40,838	44,987 (R)	50,788 (R)	49,003 (R)	43,765	Imports	Fan Systems
31,218	29,222	31,358 (R)	30,909 (R)	32,779	Exports	
118,316	161,734 (R)	148,641 (R)	151,663 (R)	118,177	Imports	Air Conditioning Equipment
67,467	67,112 (R)	70,182	65,650 (R)	59,967	Exports	
14,799	16,973 (R)	15,268 (R)	18,370 (R)	16,434	Imports	Air Purifying Equipment
41,816	47,515 (R)	45,412 (R)	47,411 (R)	42,329	Exports	
2,465	2,567	2,155	2,709	3,065	Imports	Hand Driers
520	395	484	578	493	Exports	
6,943	5,776	6,454	16,581 (R)	15,263	Imports	Meters
13,392	15,115	18,946	21,108 (R)	17,347	Exports	
78,681	83,492 (R)	81,073 (R)	86,685 (R)	77,579	Imports	Plugs & Sockets
44,842	52,825	56,249	55,813 (R)	49,546	Exports	
325,208	359,477 (R)	312,642 (R)	319,118 (R)	354,314	Imports	Electrical Wires
130,740	141,250 (R)	138,575 (R)	145,779 (R)	146,872	Exports	
6,714	7,150	6,583	7,380 (R)	5,405	Imports	Electrical Insulators
7,200	7,772	7,599	7,246 (R)	7,519	Exports	
128,479	124,481 (R)	127,865 (R)	133,771 (R)	134,415	Imports	Lamps & Fittings
59,018	62,092 (R)	64,126	66,957 (R)	73,050	Exports	
35,061	35,097	29,055	26,576 (R)	29,040	Imports	Fire & Security Alarms
43,892	46,392 (R)	42,632	42,409 (R)	40,890	Exports	
23,649	24,861 (R)	26,789	27,646 (R)	23,475	Imports	Lifts & Escalators
4,142	6,464	4,724	4,756	5,276	Exports	

© Crown copyright 2012

Published under licence from the Controller of Her Majesty's Stationery Office.

Applications for reproductions should be made in writing to :-

The Copyright Unit, Her Majesty's Stationery Office, St. Clements House,  
2-16 Colegate, Norwich NR3 1BQ

May 2012

URN 12 / 313d

ISSN 0264-6188