

**Population in custody
monthly tables
March 2009
England and Wales**

Ministry of Justice
Statistics bulletin

Published 30 April 2009

Population in custody March 2009 – Key points

Population in custody

- The population in custody on 31 March 2009 was 83,346, a rise of 1,120 from a year earlier. The population in prisons was 82,893 (a rise of 1,198 from a year earlier), in Secure Training Centres (STCs) it was 255 and in Secure Children's Homes (SCHs) it was 198.

Population in prison

- The male prison population increased by 2 per cent (1,330) to 78,605 and the female prison population decreased 3 per cent (132) to 4,288 in March 2009 compared to March 2008.
- The remand population in prison decreased by 1 per cent to 12,987 (86) in March 2009 compared to March 2008. Within this total, the untried population increased 1 per cent (76) to 8,446 and the convicted unsentenced population went down 3 per cent (162), to 4,541.
- Amongst the remand population the changes since March 2008 by offence group were all less than 100 apart from drug offences which dropped by 9 per cent (175).
- There were 68,162 sentenced⁽¹⁾ prisoners at 31 March 2009, an increase of 2 per cent (1,026) from a year earlier. There were increases for those serving indeterminate sentences (Life sentences and Indeterminate sentences for Public Protection) which increased by 12 per cent (1,317) and for those serving sentences of 1 year to less than 4 years which increased by 3 per cent (662). There were falls for other sentence lengths including less than or equal to 6 months (down 463 or 8 per cent), greater than 6 and less than 12 months (down 207 or 8 per cent) and 4 years or more (down 282 or 1 per cent). The falls for sentences less than 12 months were against a relatively high short-sentenced population a year ago.
- Amongst the sentenced⁽¹⁾ prison population the largest increases were for violence against the person (up 1,226, 7 per cent), sexual offences (347, 5 per cent), robbery (198, 2 per cent) and fraud and forgery (109, 6 per cent) from March 2008. The largest decreases since March 2008 were in those serving sentences for motoring offences (down 303, 21 per cent), theft and handling (232, 6 per cent) and other offences (271, 4 per cent).
- The adult population in prison was 71,217 at 31 March 2009, an increase of 2 per cent (1,385) from a year earlier. Over the same time period the 15 to 17 year olds fell 9 per cent (217) to 2,133 and the young adult prison population increased slightly from 9,513 in March 2008 to 9,543 at 31 March 2009.
- The prison population was 111 per cent of the 'In Use CNA' (74,871) at 31 March 2009.

(1) Includes recalls and excludes fine defaulters

- On 31 March 2009, the foreign national prison population was 11,283. This includes those held under the Immigration Act 1971 (including those in the immigration removal centres Dover, Haslar and Lindholme) as well as those held on remand or serving custodial sentences.
- The largest foreign national population at 31 March 2009 were Jamaican nationals, with a population of 1,099 followed by Nigeria (855), Republic of Ireland (620), Poland (492) Somalia (447), China (445) and Vietnam (442).

Figure A: Remand population by offence group

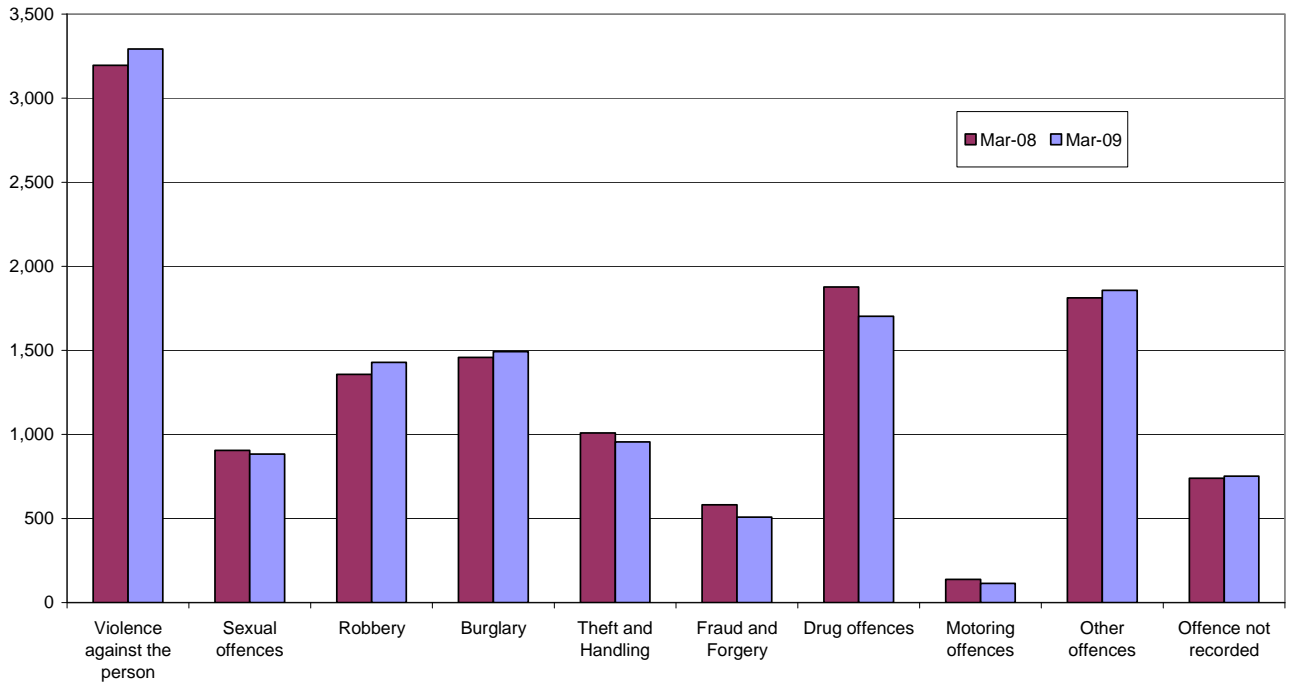
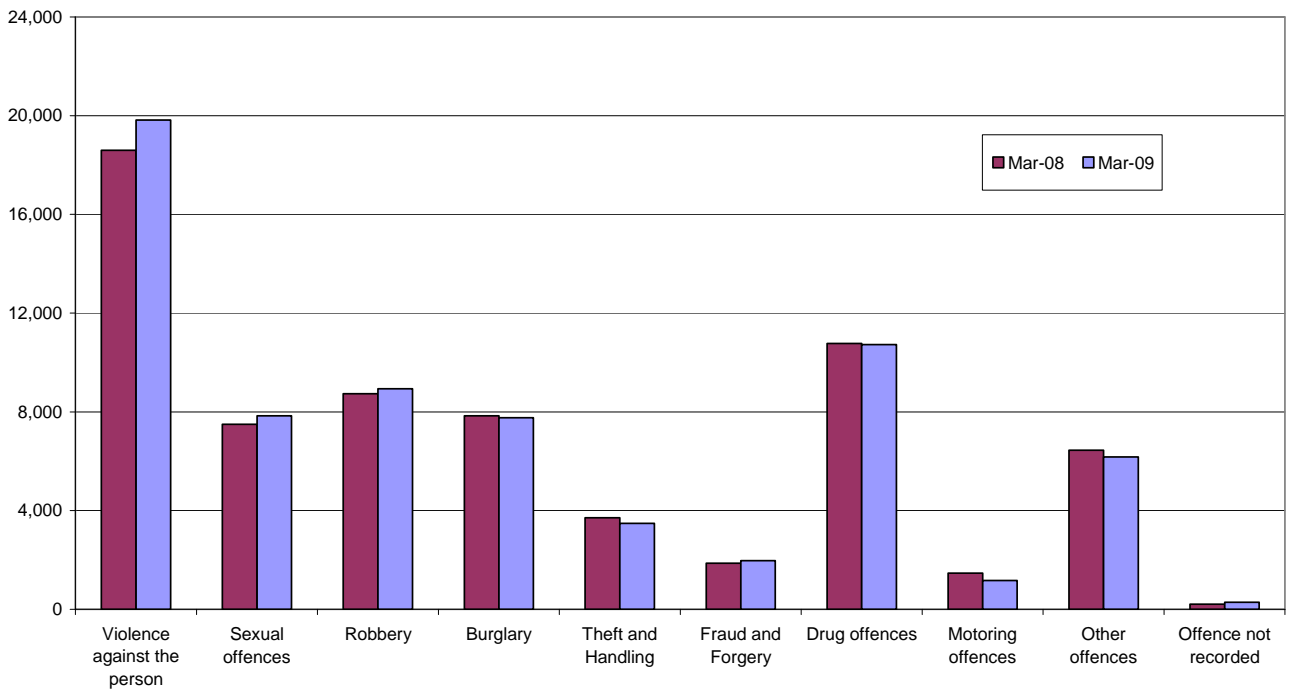


Figure B: Immediate custodial sentenced population by offence group



Notes

Data sources and quality

The data presented in this brief are drawn from the prison administrative IT systems. Although care is taken when processing and analysing the returns, the detail collected is subject to the inaccuracies inherent in any large-scale recording system. While the figures shown have been checked as far as practicable, they should be regarded as approximate and not necessarily accurate to the last whole number shown in the tables. They are fit to be used for purposes of looking at trends and for comparing the relative magnitude of components.

The prison population information has been drawn from two prison sources. The first source is the routine provision by prison establishments of records of the numbers of persons held in custody at the end of each month, broadly subdivided according to age, sex, custody type and sentence length. The records are collated and processed centrally, to produce the main estimates of the end of month population presented. The second source is the electronically held details for individual inmates such as date of birth, sex, religion, ethnic origin, custody type, offence, and reception and discharge dates and, for sentenced prisoners, sentence length. These data are collected on a central computer database and are used to produce the analyses by offence group and individual year of age. They form the basis of detailed population breakdowns, supplementing the aggregates derived from the first source, to which they are scaled for consistency. A new more detailed method of scaling this information was developed in 2004.

Because the detailed population breakdowns have been scaled and also rounded to the nearest whole number, individual components may not sum to the totals.

Information on the population in STCs and SCHs has been supplied by the Youth Justice Board.

All figures are provisional pending publication of the annual Offender Management Caseload Statistics.

Definitions

Population in custody - this includes those held in prison establishments, police cells under Operation Safeguard, secure training centres (STCs) and secure children's homes (SCHs). This is a change to previous outputs (notably Prison Population Monthly Brief and Prison Statistics England and Wales) where the reference to 'population in custody' just covered those held in prison establishments and police cells. All coverage is for England and Wales.

Population in prison – this includes those held in prisons in England and Wales, including the three removal centres of Dover, Haslar and Lindholme.

Sentenced population – this includes those sentenced to an immediate custodial sentence and fine defaulters.

Immediate custodial sentence – this does not include fine defaulters.

Adult prisoners – these are prisoners aged 21 years and over.

Young adults – these are prisoners aged 18 to 20, but including 21 year old prisoners who were aged 20 or under at conviction who have not been reclassified as part of the adult population

Indeterminate sentences – these cover life sentences and indeterminate sentences for public protection (IPP).

Contact points for further information

Current and previous editions of this publication are available for download at www.justice.gov.uk/publications/populationincustody.htm . Future reports will be published on a monthly basis. Spreadsheet files of the tables contained in this document are also available for download from this address.

Press enquiries should be directed to the Ministry of Justice press office:

Tel: 020 3334 3536

Other enquiries about these statistics should be directed to:

Ministry of Justice
Offender Management and Sentencing – Analytical Services
2nd Floor Fry Building
2 Marsham Street
London
SW1P 4DF
Tel: 020 7035 3470

General enquiries about the statistical work of the Ministry of Justice can be e-mailed to: statistics.enquiries@justice.gsi.gov.uk

General information about the official statistics system of the UK is available from www.statistics.gov.uk

© Crown copyright
Produced by the Ministry of Justice

Alternative formats are available on request from statistics.enquiries@justice.gsi.gov.uk

Table 1: Population in custody: by type of custody and sex

	Mar-08			Mar-09			Percentage change 2008 to 2009		
	Males	Females	Total	Males	Females	Total	Males	Females	Total
All population in custody, of which	77,658	4,568	82,226	78,936	4,410	83,346	2	-3	1
Prisons	77,275	4,420	81,695	78,605	4,288	82,893	2	-3	1
Police cells	64	0	64	0	0	0	*	*	*
SCHs	167	50	217	163	35	198	-2	*	-9
STCs	152	98	250	168	87	255	11	-11	2
All population in prison, of which	77,275	4,420	81,695	78,605	4,288	82,893	2	-3	1
Remand	12,178	895	13,073	12,185	802	12,987	0	-10	-1
Untried	7,817	553	8,370	7,904	542	8,446	1	-2	1
Convicted unsentenced	4,361	342	4,703	4,281	260	4,541	-2	-24	-3
Under sentence	63,777	3,447	67,224	64,856	3,425	68,281	2	-1	2
Fine defaulter	81	7	88	112	7	119	38	*	35
Less than or equal to 6 months	5,202	504	5,706	4,778	465	5,243	-8	-8	-8
Greater than 6 months to less than 12 months	2,446	252	2,698	2,271	219	2,491	-7	-13	-8
12 months to less than 4 years	22,010	1,250	23,260	22,605	1,317	23,922	3	5	3
4 years or more (excluding Indeterminate sentences)	23,461	1,100	24,561	23,229	1,050	24,279	-1	-5	-1
Indeterminate sentences	10,577	334	10,911	11,861	367	12,228	12	10	12
Non-criminal prisoners	1,320	78	1,398	1,564	61	1,625	18	-22	16
All adult population in prison, of which	65,904	3,928	69,832	67,379	3,838	71,217	2	-2	2
Remand	9,751	771	10,522	9,816	686	10,502	1	-11	0
Untried	6,290	489	6,779	6,395	467	6,862	2	-4	1
Convicted unsentenced	3,461	282	3,743	3,421	219	3,640	-1	-22	-3
Under sentence	54,944	3,085	58,029	56,106	3,095	59,201	2	0	2
Fine defaulter	79	7	86	111	7	118	41	*	37
Less than or equal to 6 months	3,970	427	4,397	3,656	388	4,043	-8	-9	-8
Greater than 6 months to less than 12 months	1,792	224	2,016	1,711	184	1,896	-4	-18	-6
12 months to less than 4 years	17,466	1,088	18,554	18,073	1,170	19,243	3	8	4
4 years or more (excluding Indeterminate sentences)	21,858	1,025	22,883	21,433	996	22,429	-2	-3	-2
Indeterminate sentences	9,779	314	10,093	11,122	350	11,472	14	11	14
Non-criminal prisoners	1,209	72	1,281	1,457	57	1,514	21	-21	18
All 15-17 year olds in prison, of which	2,291	58	2,350	2,085	47	2,133	-9	*	-9
Remand	548	14	562	523	13	537	-5	*	-5
Untried	367	9	375	344	12	355	-6	*	-5
Convicted unsentenced	181	5	187	179	2	181	-1	*	-3
Under sentence	1,743	44	1,788	1,559	34	1,593	-11	*	-11
Fine defaulter	0	0	0	0	0	0	*	*	*
Less than or equal to 6 months	427	14	441	337	9	345	-21	*	-22
Greater than 6 months to less than 12 months	255	6	261	189	5	194	-26	*	-26
12 months to less than 4 years	862	18	880	812	12	824	-6	*	-6
4 years or more (excluding Indeterminate sentences)	122	7	128	148	5	153	21	*	19
Indeterminate sentences	78	0	78	74	3	77	-5	*	-1
Non-criminal prisoners	0	0	0	3	0	3	*	*	*
All young adults¹ in prison, of which	9,080	434	9,513	9,141	403	9,543	1	-7	0
Remand	1,879	110	1,989	1,846	103	1,948	-2	-7	-2
Untried	1,160	55	1,216	1,165	63	1,229	0	15	1
Convicted unsentenced	719	55	774	681	39	720	-5	*	-7
Under sentence	7,090	318	7,407	7,191	296	7,487	1	-7	1
Fine defaulter	2	0	2	1	0	1	*	*	*
Less than or equal to 6 months	805	63	868	786	68	854	-2	8	-2
Greater than 6 months to less than 12 months	399	22	421	370	30	401	-7	*	-5
12 months to less than 4 years	3,682	144	3,826	3,720	135	3,855	1	-7	1
4 years or more (excluding Indeterminate sentences)	1,481	68	1,550	1,648	49	1,697	11	*	10
Indeterminate sentences	720	20	740	665	14	679	-8	*	-8
Non-criminal prisoners	111	6	117	104	4	108	-7	*	-8

¹ Young adults are those aged 18 - 20 and those 21 year olds who were aged 20 or under at conviction who have not been reclassified as part of the adult population

* Indicates that one or both of the comparative numbers are less than 50 which could give rise to misleading percentage changes

Data Sources and Quality

These figures have been drawn from administrative IT systems which, as with any large scale recording system, are subject to possible errors with data entry and processing. See Data Sources and Quality section of report for more information.

Table 2: Population in prison by offence - remand and immediate custodial sentence

	Mar-08		Mar-09		Percentage change 2008 to 2009	
	Remand	Immediate custodial sentence	Remand	Immediate custodial sentence	Remand	Immediate custodial sentence
All prisoners	13,073	67,136	12,987	68,162	-1	2
Violence against the person	3,195	18,600	3,292	19,826	3	7
Sexual offences	905	7,497	883	7,844	-2	5
Robbery	1,358	8,733	1,429	8,931	5	2
Burglary	1,458	7,838	1,492	7,762	2	-1
Theft and Handling	1,009	3,711	955	3,479	-5	-6
Fraud and Forgery	581	1,863	508	1,972	-13	6
Drug offences	1,878	10,768	1,703	10,721	-9	0
Motoring offences	138	1,471	114	1,168	-17	-21
Other offences	1,812	6,442	1,857	6,171	2	-4
Offence not recorded	739	213	752	287	2	35
All male prisoners	12,178	63,696	12,185	64,744	0	2
Violence against the person	3,011	17,840	3,126	18,969	4	6
Sexual offences	894	7,446	864	7,794	-3	5
Robbery	1,299	8,449	1,368	8,590	5	2
Burglary	1,412	7,636	1,452	7,553	3	-1
Theft and Handling	899	3,278	851	3,066	-5	-6
Fraud and Forgery	479	1,600	439	1,721	-8	8
Drug offences	1,732	9,760	1,588	9,832	-8	1
Motoring offences	136	1,446	111	1,149	-18	-21
Other offences	1,660	6,039	1,713	5,805	3	-4
Offence not recorded	656	202	673	266	3	32
All female prisoners	895	3,440	802	3,418	-10	-1
Violence against the person	184	760	166	858	-10	13
Sexual offences	12	51	19	51	*	-1
Robbery	59	284	61	341	3	20
Burglary	46	202	41	209	*	4
Theft and Handling	110	433	104	413	-5	-5
Fraud and Forgery	102	264	69	251	-32	-5
Drug offences	146	1,008	116	889	-21	-12
Motoring offences	2	25	3	19	*	*
Other offences	152	403	144	367	-5	-9
Offence not recorded	83	11	79	21	-4	*

Table 2: Population in prison by offence - remand and immediate custodial sentence

	Mar-08		Mar-09		Percentage change 2008 to 2009	
	Remand	Immediate custodial sentence	Remand	Immediate custodial sentence	Remand	Immediate custodial sentence
All adult prisoners	10,522	57,943	10,502	59,083	0	2
Violence against the person	2,508	15,965	2,604	17,135	4	7
Sexual offences	766	7,082	775	7,434	1	5
Robbery	821	6,539	890	6,700	8	2
Burglary	1,136	6,643	1,146	6,536	1	-2
Theft and Handling	848	3,180	796	3,017	-6	-5
Fraud and Forgery	562	1,814	474	1,905	-16	5
Drug offences	1,626	9,920	1,491	9,921	-8	0
Motoring offences	115	1,273	94	1,017	-18	-20
Other offences	1,506	5,366	1,560	5,186	4	-3
Offence not recorded	634	161	672	232	6	44
All adult male prisoners	9,751	54,865	9,816	55,995	1	2
Violence against the person	2,361	15,336	2,472	16,396	5	7
Sexual offences	757	7,031	760	7,385	0	5
Robbery	774	6,310	843	6,424	9	2
Burglary	1,097	6,460	1,113	6,349	1	-2
Theft and Handling	748	2,775	706	2,632	-6	-5
Fraud and Forgery	462	1,558	408	1,660	-12	7
Drug offences	1,499	8,974	1,385	9,072	-8	1
Motoring offences	113	1,251	91	1,002	-19	-20
Other offences	1,385	5,018	1,440	4,863	4	-3
Offence not recorded	556	153	598	213	8	40
All adult female prisoners	771	3,078	686	3,088	-11	0
Violence against the person	147	629	133	739	-10	17
Sexual offences	9	51	14	50	*	*
Robbery	47	229	47	276	*	21
Burglary	39	183	33	188	*	3
Theft and Handling	100	405	90	384	-10	-5
Fraud and Forgery	100	256	66	245	-34	-4
Drug offences	127	946	106	849	-16	-10
Motoring offences	2	23	3	15	*	*
Other offences	121	348	120	324	-1	-7
Offence not recorded	78	9	74	19	-6	*

Table 2: Population in prison by offence - remand and immediate custodial sentence

	Mar-08		Mar-09		Percentage change 2008 to 2009	
	Remand	Immediate custodial sentence	Remand	Immediate custodial sentence	Remand	Immediate custodial sentence
All aged 15-17	562	1,788	537	1,593	-5	-11
Violence against the person	158	465	140	420	-11	-10
Sexual offences	38	74	28	70	*	-6
Robbery	138	466	164	447	19	-4
Burglary	78	271	82	269	5	-1
Theft and Handling	26	149	24	118	*	-21
Fraud and Forgery	1	7	1	3	*	*
Drug offences	41	91	36	79	*	-13
Motoring offences	3	32	8	18	*	*
Other offences	67	227	51	163	-24	-28
Offence not recorded	12	7	4	7	*	*
All males aged 15-17	548	1,743	523	1,559	-5	-11
Violence against the person	155	449	138	408	-11	-9
Sexual offences	38	74	28	69	*	-7
Robbery	138	457	161	437	17	-4
Burglary	77	268	81	266	5	-1
Theft and Handling	24	146	21	115	*	-21
Fraud and Forgery	1	7	1	3	*	*
Drug offences	38	88	36	78	*	-11
Motoring offences	3	32	8	18	*	*
Other offences	63	219	47	159	*	-27
Offence not recorded	12	5	3	7	*	*
All females aged 15-17	14	44	13	34	*	*
Violence against the person	3	16	2	12	*	*
Sexual offences	0	0	0	1	*	*
Robbery	0	9	2	9	*	*
Burglary	1	3	1	4	*	*
Theft and Handling	2	4	2	3	*	*
Fraud and Forgery	0	0	0	0	*	*
Drug offences	3	3	0	1	*	*
Motoring offences	0	0	0	0	*	*
Other offences	4	8	4	4	*	*
Offence not recorded	0	2	1	0	*	*

Table 2: Population in prison by offence - remand and immediate custodial sentence

	Mar-08		Mar-09		Percentage change 2008 to 2009	
	Remand	Immediate custodial sentence	Remand	Immediate custodial sentence	Remand	Immediate custodial sentence
All young adults¹	1,989	7,405	1,948	7,486	-2	1
Violence against the person	529	2,170	548	2,271	3	5
Sexual offences	101	341	81	340	-20	0
Robbery	399	1,729	376	1,784	-6	3
Burglary	244	925	264	957	8	3
Theft and Handling	136	382	135	344	0	-10
Fraud and Forgery	18	43	33	64	*	*
Drug offences	211	758	176	721	-16	-5
Motoring offences	20	165	13	134	*	-19
Other offences	238	849	246	822	3	-3
Offence not recorded	93	45	76	48	-18	*
All male young adults¹	1,879	7,088	1,846	7,190	-2	1
Violence against the person	495	2,055	517	2,164	4	5
Sexual offences	99	341	76	340	-23	0
Robbery	387	1,683	364	1,729	-6	3
Burglary	237	908	258	939	9	3
Theft and Handling	128	357	123	318	-4	-11
Fraud and Forgery	16	35	30	58	*	*
Drug offences	195	698	167	682	-14	-2
Motoring offences	20	163	13	130	*	-20
Other offences	212	802	226	783	7	-2
Offence not recorded	89	45	72	46	-19	*
All female young adults¹	110	318	103	296	-7	-7
Violence against the person	34	115	31	107	*	-7
Sexual offences	2	0	4	0	*	*
Robbery	12	46	12	55	*	*
Burglary	6	16	6	18	*	*
Theft and Handling	7	25	12	26	*	*
Fraud and Forgery	2	8	3	6	*	*
Drug offences	16	59	9	39	*	*
Motoring offences	0	2	0	3	*	*
Other offences	26	47	20	39	*	*
Offence not recorded	4	0	5	2	*	*

¹ Young adults are those aged 18 - 20 and those 21 year olds who were aged 20 or under at conviction who have not been reclassified as part of the adult population

March 2009 and March 2008 data are not directly comparable because some improvements have been made to the way offences are grouped which has resulted in small changes to some offence groups

* Indicates that one or both of the comparative numbers are less than 50 which could give rise to misleading percentage changes

Data Sources and Quality

These figures have been drawn from administrative IT systems which, as with any large scale recording system, are subject to possible errors with data entry and processing. See Data Sources and Quality section of report for more information.

Table 3: Young population in prison: by type of custody and sex**31 March 2009**

	15	16	17	Total Under 18	18	19	20	21	Total Young Adults ¹
All young population in prisons, of which									
<i>Prisoners on remand</i>	58	128	350	537	601	625	640	82	1,948
Untried	43	81	231	355	381	409	381	58	1,229
Convicted unsentenced	15	47	119	181	220	216	260	24	720
<i>Prisoners under sentence</i>	152	458	983	1,593	1,514	2,432	2,814	727	7,487
Fine defaulter	0	0	0	0	0	1	1	0	1
Immediate custodial sentence	152	458	983	1,593	1,514	2,431	2,813	727	7,486
<i>Non-criminal prisoners</i>	1	1	1	3	18	34	37	19	108
All young male population in prisons, of which									
<i>Prisoners on remand</i>	58	128	336	523	577	592	597	79	1,846
Untried	43	81	219	344	365	388	355	57	1,165
Convicted unsentenced	15	47	117	179	213	204	242	23	681
<i>Prisoners under sentence</i>	152	458	949	1,559	1,446	2,321	2,712	711	7,191
Fine defaulter	0	0	0	0	0	1	1	0	1
Immediate custodial sentence	152	458	949	1,559	1,446	2,321	2,712	711	7,190
<i>Non-criminal prisoners</i>	1	1	1	3	16	32	36	19	104
All young female population in prisons, of which									
<i>Prisoners on remand</i>	0	0	13	13	24	33	44	2	103
Untried	0	0	12	12	16	21	25	1	63
Convicted unsentenced	0	0	2	2	8	12	18	1	39
<i>Prisoners under sentence</i>	0	0	34	34	68	110	102	16	296
Fine defaulter	0	0	0	0	0	0	0	0	0
Immediate custodial sentence	0	0	34	34	68	110	102	16	296
<i>Non-criminal prisoners</i>	0	0	0	0	1	1	1	0	4

¹ Young adults are those aged 18 - 20 and those 21 year olds who were aged 20 or under at conviction who have not been reclassified as part of the adult population

Data Sources and Quality

These figures have been drawn from administrative IT systems, which, as with any large scale recording system, are subject to possible errors with data entry and processing. See Data Sources and Quality section of report for more information.

Table 4: CNA and population by sex and establishment

31 March 2009

Establishment	In use CNA ¹	Total Population	Of which:		
			Foreign nationals	UK nationals	Nationality not recorded
Males					
Acklington	946	937	31	906	0
Albany	567	554	63	483	8
Altcourse	794	1,281	100	1,167	13
Ashfield	400	337	24	307	6
Ashwell	599	618	73	545	0
Aylesbury	437	440	58	382	0
Bedford	321	405	81	319	5
Belmarsh	800	883	151	717	15
Birmingham	1,109	1,413	200	1,188	25
Blantyre House	122	117	2	114	1
Blundeston	481	517	83	430	3
Brinsford	545	548	31	516	0
Bristol	424	605	67	530	8
Brixton	606	754	251	488	16
Buckley Hall	346	378	29	349	0
Bullingdon	879	1,041	142	894	4
Bullwood Hall	180	226	220	6	0
Camp Hill	520	580	88	455	37
Canterbury	195	292	276	12	5
Cardiff	548	806	64	729	13
Castington	400	350	8	340	2
Channings Wood	696	719	50	669	0
Chelmsford	554	688	104	565	20
Coldingley	494	503	36	467	0
Cookham Wood	114	106	8	96	2
Dartmoor	623	643	38	605	0
Deerbolt	503	436	7	428	1
Doncaster	771	1,141	95	991	54
Dorchester	137	225	17	204	5
Dovegate	800	849	110	738	1
Dover	316	314	309	0	5
Durham	593	938	85	847	6
Edmunds Hill	371	369	81	287	1
Elmley	735	945	148	782	16
Erlestoke	470	464	46	418	0
Everthorpe	603	683	29	654	0
Exeter	313	521	26	489	6
Featherstone	663	679	71	607	1
Feltham	762	635	172	434	30
Ford	557	525	68	457	0
Forest Bank	800	1,094	86	983	25
Frankland	733	729	43	685	1
Full Sutton	592	569	52	517	0
Garth	812	805	49	756	0
Gartree	677	675	56	612	7
Glen Parva	668	785	63	720	2
Gloucester	225	303	25	265	13
Grendon/Spring Hill	527	515	20	494	0
Guys Marsh	520	571	53	518	0
Haslar	160	150	147	0	3
Haverigg	622	607	17	590	0
Hewell ¹	1,173	1,368	213	1,150	5
High Down	999	1,066	215	820	31
Highpoint	906	917	175	738	4
Hindley	515	193	7	182	4
Hollesley Bay	345	340	13	327	0
Holme House	857	937	25	907	4
Hull	694	998	72	921	5
Huntercombe	360	291	51	234	5
Kennet	175	336	18	318	0
Kingston (Portsmouth)	175	173	17	156	0
Kirkham	590	572	8	564	0
Kirklevington Grange	283	270	2	268	0
Lancaster Castle	159	230	4	226	0
Lancaster Farms	480	503	18	474	11
Latchmere House	207	199	7	192	0
Leeds	829	1,151	119	1,026	6
Leicester	210	339	60	271	8
Lewes	623	664	75	580	8
Leyhill	512	498	25	473	0
Lincoln	436	672	87	576	9
Lindholme	1,046	1,122	226	896	0
Littlehey	663	717	111	605	1
Liverpool	1,166	1,230	109	1,119	2
Long Lartin	458	437	68	368	1
Lowdham Grange	640	695	102	591	2
Maidstone	451	408	145	262	1
Manchester	948	1,199	158	998	43

Table 4: CNA and population by sex and establishment

31 March 2009

Establishment	In use CNA ¹	Total Population	Of which:		
			Foreign nationals	UK nationals	Nationality not recorded
Moorland Open	260	246	3	243	0
Moorland Closed	740	768	38	730	0
North Sea Camp	318	303	13	290	0
Northallerton	147	208	7	201	0
Norwich	447	501	58	436	7
Nottingham	379	550	76	463	11
Onley	652	624	58	566	0
Parc	838	1,180	42	1,131	6
Parkhurst	449	484	80	399	5
Pentonville	813	1,087	335	732	20
Peterborough	480	595	109	463	23
Portland	579	601	72	526	3
Preston	453	677	34	637	5
Ranby	951	1,057	78	976	3
Reading	190	227	15	208	4
Risley	1,048	1,086	86	1,000	0
Rochester	642	629	115	514	0
Rye Hill	600	647	128	518	1
Shepton Mallet	165	189	5	183	1
Shrewsbury	177	292	31	258	3
Stafford	741	736	73	661	1
Standford Hill	462	451	40	409	2
Stocken	779	812	69	743	0
Stoke Heath	562	562	27	532	3
Sudbury	581	566	16	550	0
Swaleside	808	814	163	649	2
Swansea	230	416	38	375	3
Swinfen Hall	604	612	46	565	1
The Mount	747	761	226	535	0
The Verne	572	583	339	242	2
The Wolds	320	381	13	368	0
Thorn Cross	322	289	1	287	1
Usk/Prescoed	320	404	21	383	0
Wakefield	748	729	60	669	0
Wandsworth	1,086	1,664	518	1,047	98
Warren Hill	222	207	19	174	14
Wayland	955	1,007	136	868	3
Wealstun	505	515	28	487	0
Wellingborough	638	642	92	548	1
Werrington	160	129	1	122	6
Wetherby	408	396	4	386	6
Whatton	776	836	63	773	0
Whitemoor	464	448	75	370	3
Winchester	499	696	65	629	2
Woodhill	641	812	143	649	21
Wormwood Scrubs	1,176	1,260	465	775	20
Wymott	1,081	1,133	61	1,072	0
TOTAL	70,265	78,605	10,468	67,340	797

Table 4: CNA and population by sex and establishment

31 March 2009

Establishment	In use CNA ¹	Total Population	Of which:		
			Foreign nationals	UK nationals	Nationality not recorded
Askham Grange	126	114	2	112	0
Bronzefield	450	420	89	288	43
Downview	358	354	81	272	1
Drake Hall	315	265	52	213	0
East Sutton Park	98	85	7	78	0
Eastwood Park	326	329	45	282	2
Foston Hall	264	223	10	210	3
Holloway	500	432	123	294	15
Low Newton	298	295	16	279	0
Morton Hall	392	359	241	117	1
New Hall	393	365	27	331	7
Peterborough	360	338	41	286	11
Send	278	277	42	235	0
Styal	448	432	39	390	3
TOTAL	4,606	4,288	816	3,387	86
Male and female establishment TOTAL	74,871	82,893	11,283	70,727	883
Police cells	*	0			
Establishment and Police cell TOTAL	74,871	82,893	11,283	70,727	883

¹ In Use CNA - Certified Normal Accommodation that is available for immediate use, excludes damaged cells, cells affected by building works and cells taken out of use due to staff shortages

² HMP Hewell was created by an amalgamation of the three former prisons, Blakenhurst, Brockhill and Hewell Grange on 25 June 2008

* On 31st March 2009 up to 400 police cells available under operation safeguard which are not included in the CNA figure

Data Sources and Quality

These figures have been drawn from administrative IT systems which, as with any large scale recording system, are subject to possible errors with data entry and processing. See Data Sources and Quality section of report for more information.

Table 5: Population in prison by nationality and sex

31st March 2009

Nationality	Male	Female	Total	Nationality	Male	Female	Total
All nationalities	78,605	4,288	82,893				
British nationals	67,340	3,387	70,727				
Foreign nationals	10,468	816	11,283				
Nationality not recorded	797	86	883				
Total Africa	2,806	315	3,121	Total Europe	3,260	195	3,456
Algeria	188	2	189	Albania	148	2	150
Angola	72	10	82	Andorra	1	0	1
Benin	2	0	2	Armenia	6	0	6
Botswana	1	0	1	Austria	14	1	15
Burundi	18	1	19	Azerbaijan	3	0	3
Cameroon	31	3	34	Belgium	38	3	42
Central African Republic	19	0	19	Bosnia and Herzegovina	7	3	10
Congo	114	9	123	Bulgaria	24	17	41
Congo, Democratic Republic of the	23	0	23	Croatia	8	0	8
Egypt	29	0	29	Cyprus	33	1	34
Equatorial Guinea	1	0	1	Czech Republic	58	5	64
Ethiopia	64	5	69	Denmark	9	0	9
Gabon	2	0	2	Estonia	21	1	22
Gambia	59	4	63	Finland	3	0	3
Ghana	173	27	200	France	140	17	157
Guinea	21	1	22	Georgia	17	0	17
Guinea-Bissau	1	0	1	Germany	86	9	96
Ivory Coast	42	3	45	Gibraltar	4	0	4
Kenya	55	11	66	Greece	14	1	15
Liberia	26	6	32	Hungary	30	4	34
Libyan Arab Jamahiriya	21	0	21	Irish Republic	600	19	620
Malawi	15	2	17	Italy	72	3	75
Mali	2	2	4	Kazakhstan	2	0	2
Mauritania	1	0	1	Kyrgyzstan	5	1	6
Mauritius	16	0	16	Latvia	93	9	102
Morocco	46	0	46	Lithuania	281	9	290
Mozambique	4	1	6	Macedonia	11	0	11
Namibia	2	0	2	Malta	6	0	6
Niger	3	1	4	Moldova	43	1	44
Nigeria	724	131	855	Netherlands	91	6	97
Rwanda	19	0	19	Norway	7	0	7
Senegal	7	1	8	Poland	476	16	492
Seychelles	1	0	1	Portugal	194	14	208
Sierra Leone	79	3	82	Romania	248	25	272
Somalia	433	14	447	Russian Federation	88	11	99
South Africa	136	38	174	San Marino	1	0	1
Sudan	39	3	42	Serbia and Montenegro	88	2	90
Swaziland	2	0	2	Slovakia	31	4	35
Tanzania	14	2	16	Slovenia	6	1	7
Togo	3	1	4	Spain	45	5	50
Tunisia	17	0	17	Sweden	19	3	22
Uganda	65	10	75	Switzerland	5	1	6
Western Sahara	2	0	2	Turkey	171	3	174
Zambia	20	2	22	Turkmenistan	2	0	2
Zimbabwe	192	24	216	Uzbekistan	8	0	8
Total Asia	2,168	117	2,285	Total Middle East	594	10	604
Afghanistan	156	0	156	Bahrain	2	0	2
Bangladesh	171	4	174	Iran	219	6	225
Bhutan	1	0	1	Iraq	267	1	268
China	408	38	445	Israel	25	2	27
Hong Kong	10	0	10	Jordan	8	0	8
India	354	7	361	Kuwait	8	0	8
Korea, Republic of	6	0	6	Lebanon	21	1	22
Malaysia	24	10	34	Oman	2	0	2
Maldives	0	1	1	Qatar	1	0	1
Mongolia	7	1	8	Saudi Arabia	13	0	13
Myanmar	3	0	3	Syrian Arab Republic	6	0	6
Nepal	8	0	8	United Arab Emirates	8	0	8
Pakistan	417	12	428	Yemen, Republic of	13	0	13
Philippines	17	4	21				
Singapore	8	2	10	Total Oceania	48	2	49
Sri Lanka	159	2	160	Australia	23	1	24
Taiwan (Nationalist Chinese)	1	0	1	Fiji	13	0	13
Thailand	5	9	14	French Southern Territories	2	0	2
Vietnam	414	28	442	Kiribati	1	0	1
				New Zealand	9	0	9
				Papua New Guinea	0	1	1
Total Central and South America	259	40	299	Total West Indies	1,212	116	1,328
Argentina	4	2	6	Aruba	2	0	2
Belize	0	1	1	Bahamas	4	0	4
Bolivia	8	1	9	Barbados	27	5	32
Brazil	71	11	82	Bermuda	4	0	4
Chile	9	0	9	Cayman Islands	1	0	1
Colombia	69	6	75	Cuba	3	0	3
Costa Rica	5	2	7	Dominica	9	1	10
Ecuador	10	1	11	Dominican Republic	3	0	3
El Salvador	0	1	1	Grenada	7	3	10
French Guiana	0	1	1	Haiti	2	0	2
Guatemala	3	0	3	Jamaica	1,031	68	1,099
Guyana	30	5	35	Montserrat	19	1	20
Honduras	1	0	1	Netherlands Antilles	4	3	7
Mexico	19	6	26	St Kitts and Nevis	1	0	1
Nicaragua	2	0	2	St Lucia	32	20	52
Panama	1	0	1	St Vincent and the Grenadines	9	2	11
Paraguay	0	1	1	Trinidad and Tobago	54	13	67
Peru	2	1	3				
South Georgia & South Sandwich Islands	1	0	1	Total Other	3	0	3
Suriname	5	0	5				
Uruguay	2	0	2				
Venezuela	15	1	16				
Total North America	119	20	139				
Canada	21	4	25				
United States	98	16	114				

Data Sources and Quality

These figures have been drawn from administrative IT systems. Care is taken when processing and analysing the returns, but the detail collected is subject to the inaccuracies inherent in any large scale recording system, and so although shown to the last individual, the figure may not be accurate to that level.