

EC Type Examination Certificate Number: **UK/ 0120/ SGS0011**

Landis + Gyr

1 Lysander Drive
Northfields Industrial Estate
Market Deeping
Peterborough
PE6 8FB

Instrument Identification:

5245

Poly Phase, Multi-rate, Active Import/ Export, Credit, Electricity Meter

Instrument Traceable Number

UK/ 0120/ SGS0011

has been assessed and certified as meeting the requirements of

EC Directive 2004/22/EC on Measuring Instruments Annex B

It is certified that the manufacturer's technical design and specimen for the above instrument has been examined and, based on the evidence submitted, it is considered that the instrument conforms to the requirements of MI-003 of EC Directive 2004/22/EC.

This certificate is to be used in conjunction with a certificate covering the product verification as required in Annex D or Annex F.

This certificate is valid for 10 years from 7th April 2008 until 6th April 2018
Issue 5

Certification is based on report number(s) EMA111942/ 1 MID dated 2nd April 2008
EMA111942/ 1 IEC dated 2nd April 2008

Notified Body Number 0120

Authorised Signature



Notified Body

SGS United Kingdom Ltd, 202B Worle Parkway, Weston-super-Mare, BS22 6WA UK

t +44 (0)1934 522917 f +44 (0)1934 522137 www.sgs.com

Contact Address

SGS United Kingdom Ltd, Unit 10, South Industrial Estate, Bowburn, Durham, DH6 5AD UK

t +44 (0)191 377 2000 f +44 (0)191 377 2020 www.sgs.com

EC Type Examination Cert.

Page 1 of 5

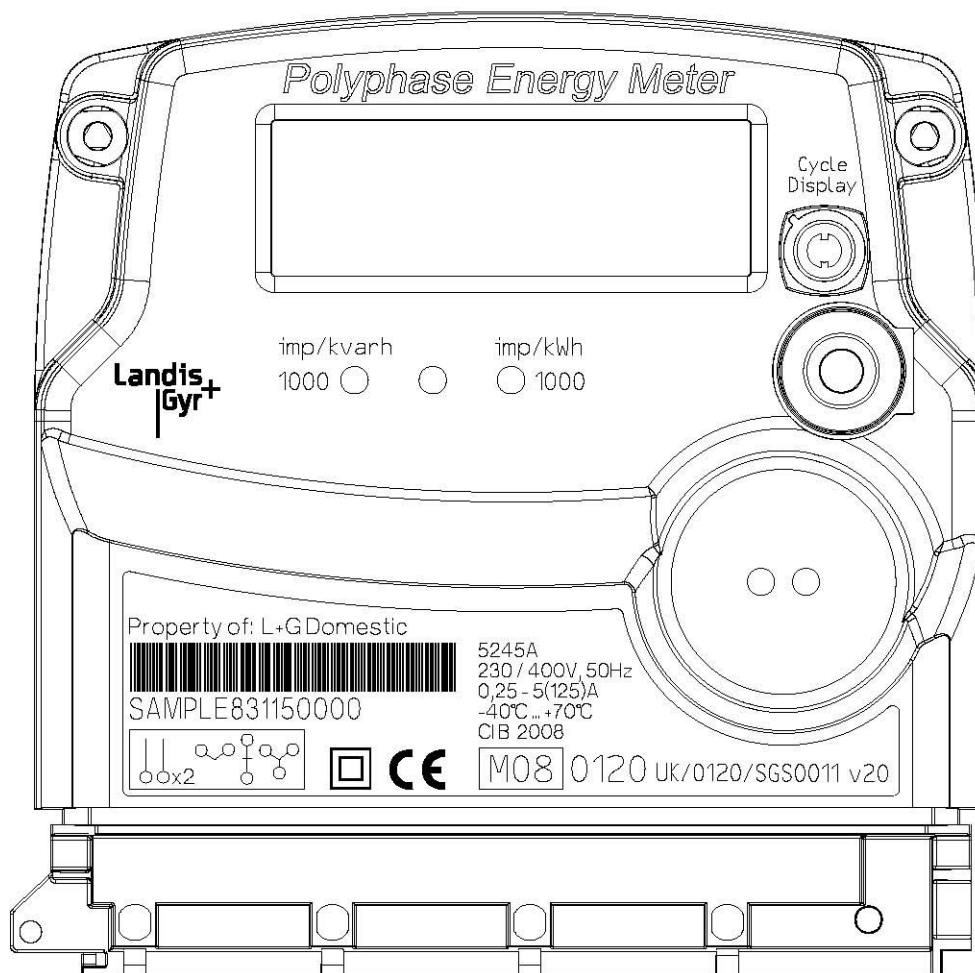
MID-B06E Rev 3



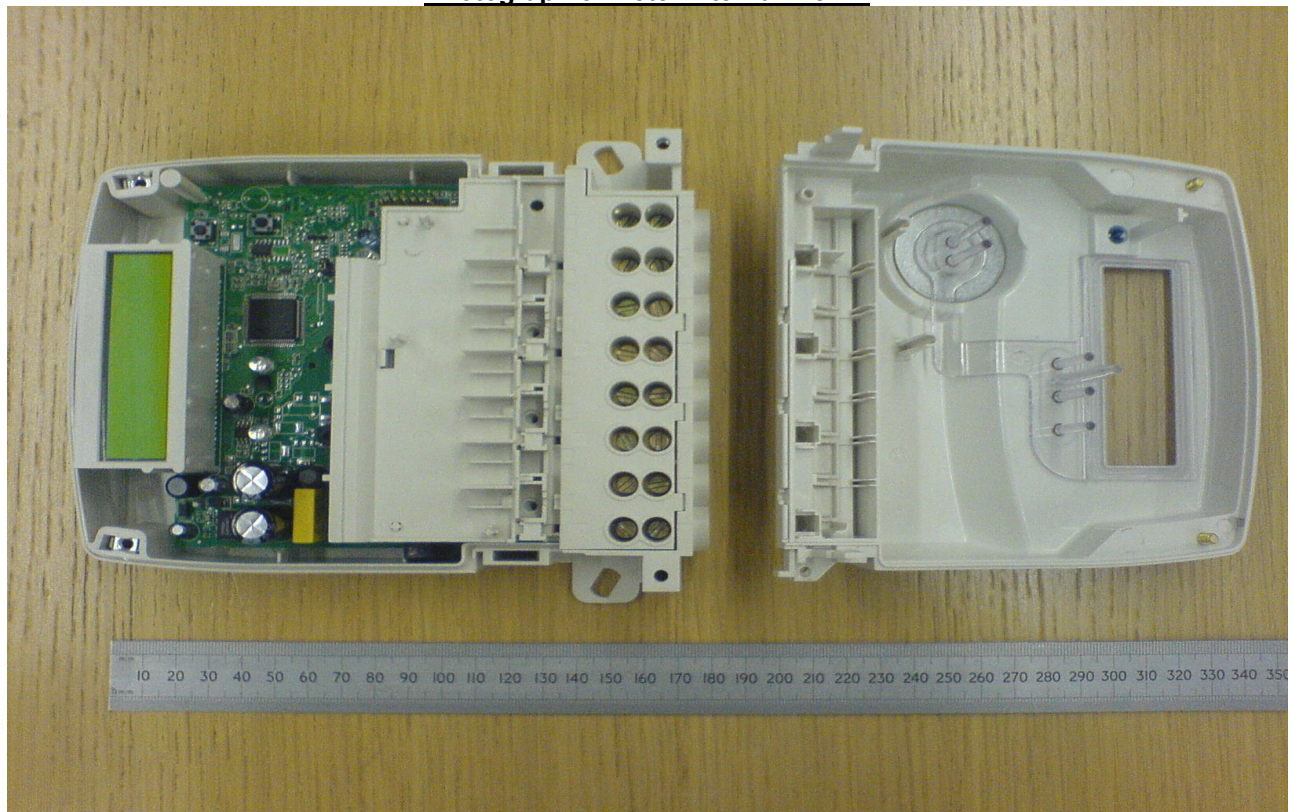
Approval Annex for EC Type Examination Cert. No. UK/ 0120/ SGS0011

Manufacturer : Landis + Gyr	
Type of Meter(s) : 5245	
Description of Meter : Poly Phase, Multi-rate, Credit, Active Import/ Export, Electricity Meter	
Accuracy Class (es) : A or B (kWh)	Software Version No : 20.0.0 Location : Nameplate
Firmware Version No: 20.0.0 Location : Nameplate	Bill Of Materials No's: 5245029 5245030 5245048 524501FLA0000 524503FLA0000 5245014FLA0000 5245061FLA0000
Meter Location: Indoor (IP51 & IP52 Rated)	Sealing Type : Wire & Crimp Location : 2 x Front of meter
Integrity of Meter: Inaccessible without breaking seals	Temperature Range : -40°C to 70°C
Type of Circuit : 3ph4w, 3ph3w, 2ph of 3ph4w, 1ph3w and 1ph2w	Frequency: 50Hz
Current Range (A): 0,25-5(125)A 0,5-10(125)A 0,75-15(125)A 1-20(125)A or I _{max} smaller than or equal to 125A, and at least 5 times higher than reference current (I _{ref})	Voltage Range (V) : 110 – 130V 220 – 240V 3x110/190V...3x240/415V or valid voltage ranges between these extremes

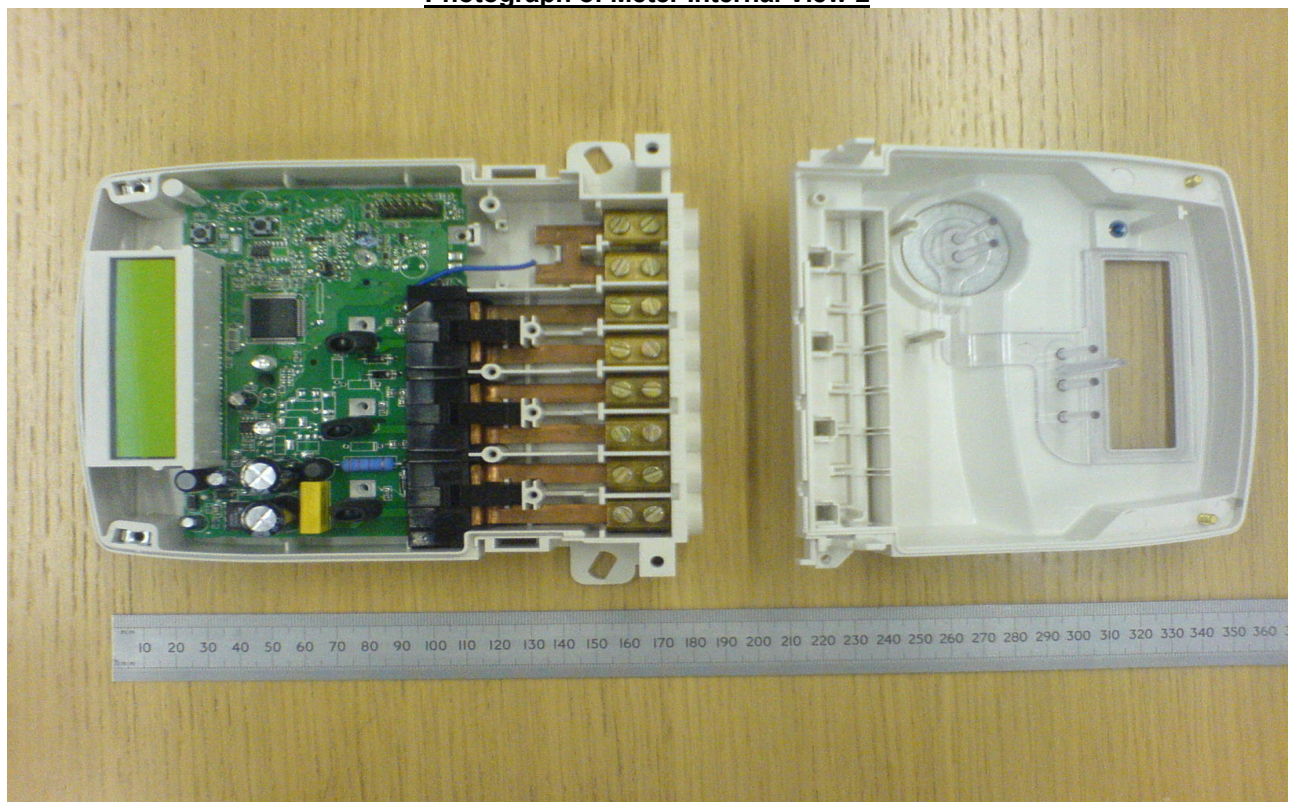
Artwork of Front of Meter



Photograph of Meter Internal View 1



Photograph of Meter Internal View 2



Product Variant Identification Details:

Type Designation	Description of meter
5245	Active / Reactive, Import / Export MID, Class A / B, 50 / 60Hz, 110 - 240V, Brass Terminals 125A I _{max}
Description	
A	Single rate
B	Single rate, two pulse outputs
C	Dual rate, one pulse output, externally switched
D	Multi rate, externally switched
K	Dual rate, one pulse output, externally switched, voltage outputs
L	Multi rate, two pulse outputs, externally switched, voltage outputs
M	Single rate, two pulse outputs, voltage outputs
-	
Minor Meter Options	
A	Alert LED
B	Battery Monitor
C	Optical Push Button
D	Inductive Loop
G	Top Tamper Switch
H	Terminal Tamper Switch
J	Communication Interface (RS232, RS485, CS)
K	Battery Backed for No Power Read
L	Externally Switched with Live
M	Maximum Demand Reset
N	Externally Switched with Neutral
S	Meter functions with Neutral Disconnected
T	Magnetic Fraud Detection
Z	Steel Terminals 100A I _{max}

Modifications to the meter(s) described according to approval No. UK/ 0120/ SGS0011 must be notified to the issuing body to confirm the meter(s) continuing compliance to the relevant pattern approval standard(s).