

EC Type Examination Certificate Number: **UK/ 0120/ SGS0056**

## **EDMI Limited**

47 Yishun Industrial Park A  
Singapore  
768724

Instrument Identification:

**Smart1/ Mk8B**

**Single Phase, Active Import/ Export, Multi-rate, Electricity Meter**

Instrument Traceable Number

**UK/ 0120/ SGS0056**

has been assessed and certified as meeting the requirements of

## **EC Directive 2004/22/EC** **on Measuring Instruments Annex B**

It is certified that the manufacturer's technical design and specimen for the above instrument has been examined and, based on the evidence submitted, it is considered that the instrument conforms to the requirements of MI-003 of EC Directive 2004/22/EC.

This certificate is issued in conjunction with a certificate covering the product verification as required in Annex D or Annex F.

This certificate is valid for 10 years from 19<sup>th</sup> March 2010 until 18<sup>th</sup> March 2020  
Issue 1

Certification is based on report number(s)  
EMA133756 dated 19<sup>th</sup> March 2010

Notified Body Number 0120

Authorised Signature  
Mr J Weaver



Notified Body  
SGS United Kingdom Ltd, 202B Worle Parkway, Weston-super-Mare, BS22 6WA UK  
t +44 (0)1934 522917 f +44 (0)1934 522137 [www.sgs.com](http://www.sgs.com)  
Contact Address  
SGS United Kingdom Ltd, Unit 10, South Industrial Estate, Bowburn, Durham, DH6 5AD UK  
t +44 (0)191 377 2000 f +44 (0)191 377 2020 [www.sgs.com](http://www.sgs.com)

EC Type Examination Cert.

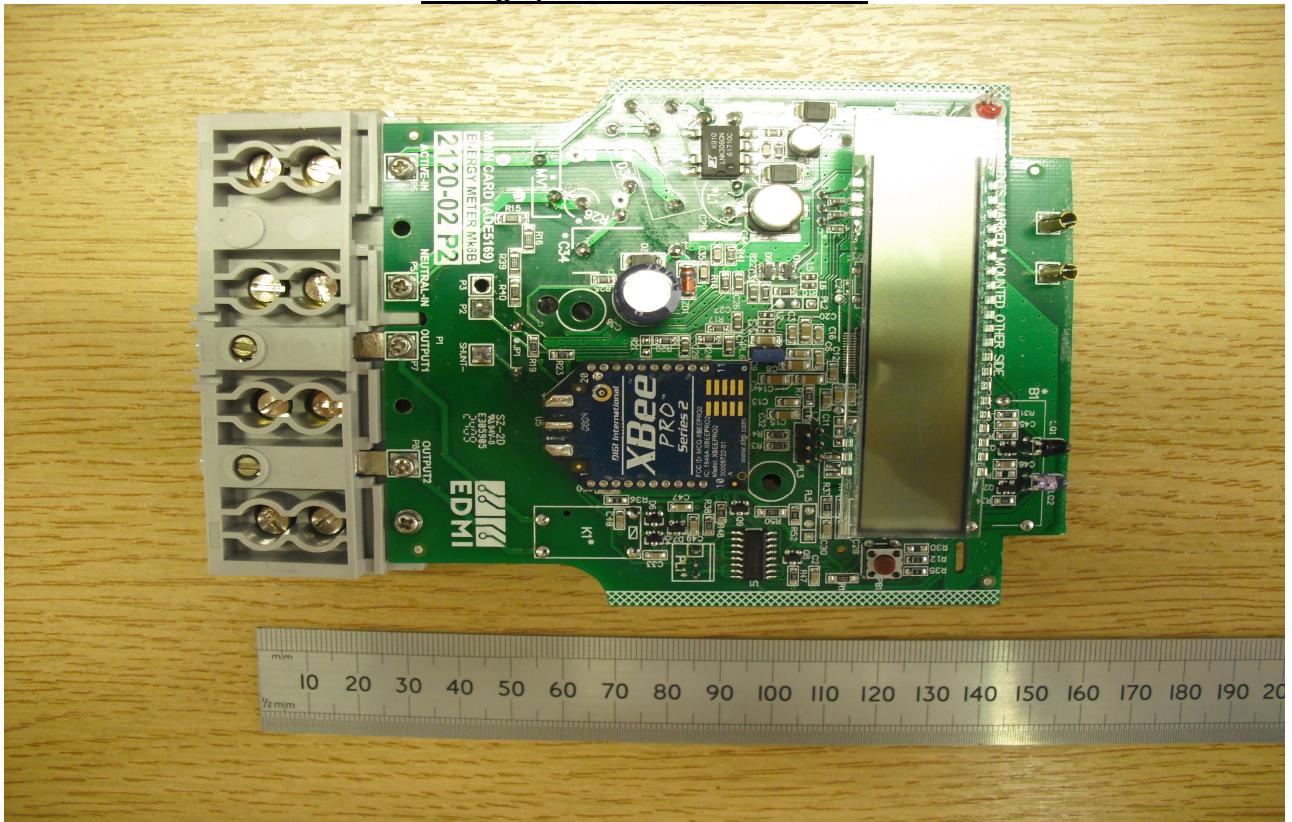
## Approval Annex for EC Type Examination Cert. No. UK/ 0120/ SGS0056

<b>Manufacturer</b>	: EDM I Limited		
<b>Type of Meter(s)</b>	: Smart1/ Mk8B		
<b>Description of Meter</b>	: Single Phase, Active Import/ Export, Multi-rate, Electricity Meter		
<b>Accuracy Class (es)</b>	: A or B (kWh)	<b>Software Version No</b>	: Version 5.01
		<b>Location</b>	: LCD
<b>Firmware Version No</b>	: Version 5.01	<b>Bill Of Materials No</b>	: Mk8B_BOM_21202P2_Rev00
<b>Location</b>	: LCD		
<b>Meter Location</b>	: Indoor	<b>Sealing Type</b>	: Wire & Crimp
		<b>Location</b>	: 2 x Front of Meter
<b>Integrity of Meter</b>	: Inaccessible without breaking seals	<b>Temperature Range</b>	: -40°C to +70°C
<b>Type of Circuit</b>	: 1p2w	<b>Frequency</b>	: 50Hz
<b>Current Range (A)</b>	: 0,5-10(100)A	<b>Voltage Range (V)</b>	: 220-240V

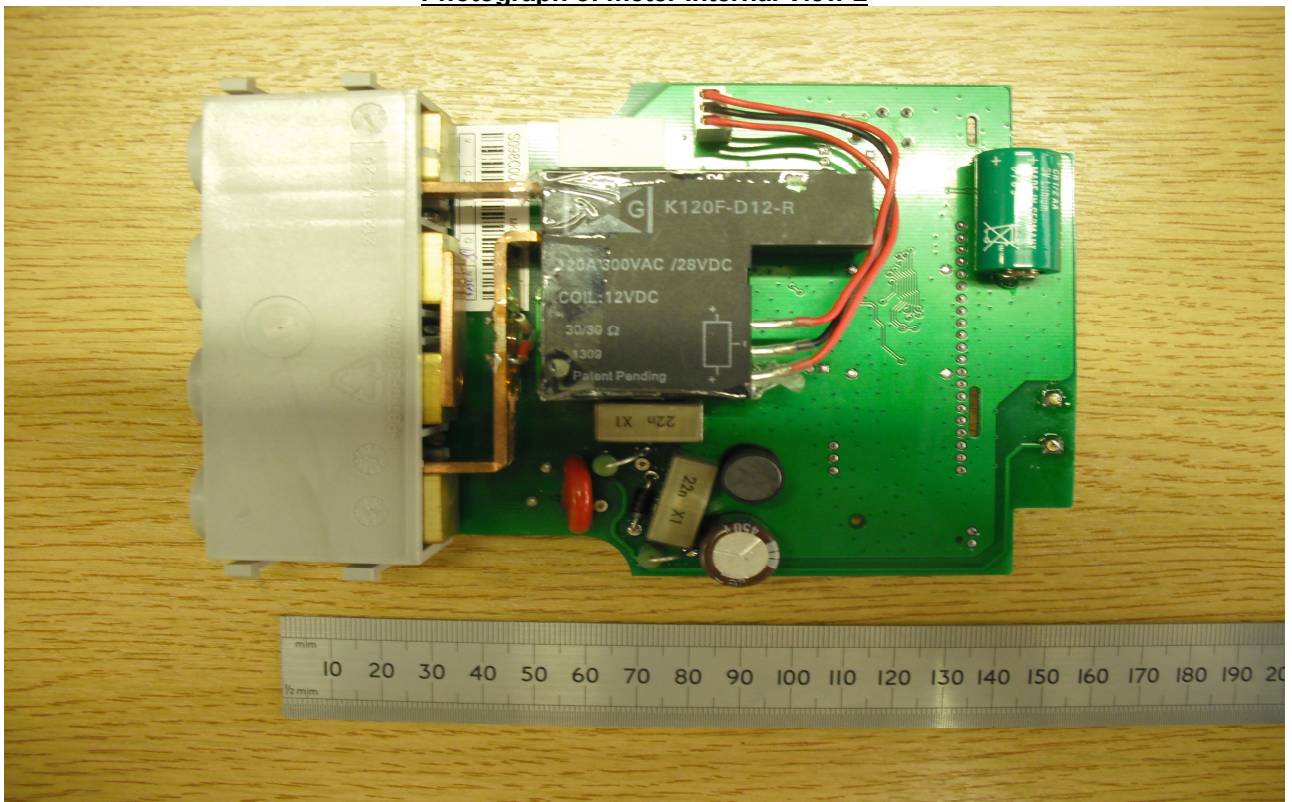
**Photograph of Front of meter**



**Photograph of meter Internal View 1**



**Photograph of meter Internal View 2**



## Product Variant Identification Details:

Type Designation	Description of meter
8B * 1 - A2 * - * - * - * - * - * - * - *	<p><b>Accuracy</b>            1 = Class B (Class 1)            2 = Class A (Class 2)</p> <p><b>Series</b>            1 = Extended Config (Type - A)</p> <p><b>Current Range</b>            A = 10(100)A</p> <p><b>Terminal Arrangement and Current Measurement</b>            2 = ANNA (Shunt based Live Current Sensor)</p> <p><b>Terminal Covers</b>            0 = No Terminal Cover fitted            1 = Standard Terminal Cover</p> <p><b>Local Communications</b>            0 = None            3 = IR optical interface to Comms Box (needed to add optional Communication modules)</p> <p><b>Remote Communications</b>            0 = None            1 = Zigbee (internal Type-A modem)            2 = Zigbee (internal Type-A modem) + G1 Top Hat (external GSM/GRPS Modem)            3 = G1 Top Hat (external GSM/GRPS Modem)            4 = GZ1 Top Hat (external 'GSM/GRPS + Zigbee' modem)</p> <p><b>Memory Option</b>            A = 64kB EEPROM            B = 128kB EEPROM            C = 1MB EEPROM</p> <p><b>Battery Options</b>            0 = None            2 = 950mAh internal battery</p> <p><b>Internal Clock Options</b>            0 = Standard Clock +/- 15 secs per month</p> <p><b>LCD Display</b>            1 = Standard LCD w/o backlight, \$ sign            2 = Standard LCD w/o backlight, £ € sign</p> <p><b>Standard I/O Options</b>            0 = None            1 = 1 x Relay Output (240V, 2A)</p> <p><b>Disconnect Terminal Relay O/P options</b>            0 = None            1 = Disconnect Relay (Type - A) 100A</p> <p><b>Communication Module Option</b>            0 = None [impossible to upgrade with mains power module]            1 = No Blanking cover [with comms upgrade options in meter]            2 = Short Blanking cover [with comms upgrade options in meter]            3 = Long Blanking Cover [with comms upgrade options in meter]            4 = GPRS to Optical modem - Type A</p>

Modifications to the meter(s) described according to approval No. **UK/ 0120/ SGS0056** must be notified to the issuing body to confirm the meter(s) continuing compliance to the relevant pattern approval standard(s).